



42A06SW0001 29 DELORO

010

DIAMOND DRILLING

Township: Deloro

Report No: 29

WORK PERFORMED FOR: Pamour Porcupine Mines Ltd.

RECORDED HOLDER: SAME AS ABOVE [X]

: OTHER []

<u>CLAIM NO.</u>	<u>HOLE NO.</u>	<u>FOOTAGE</u>	<u>DATE</u>	<u>NOTE</u>
P 850094	PM-85-0	250	May/85	(1)
P 850095	85-1	250	"	(1)
"	85-2	250	"	(1)
P 850090	85-3	250	"	(1)
P 781232	85-4	190	"	(1)
"	85-5	250	"	(1)
"	85-6	250	"	(1)
P 725183	85-7	250	"	(1)

NOTES: (1) #121-86

LOCATION _____

PAMOUR PORCUPINE MINES LTD.

HOLE NO. PM-850

N. _____ FOOTAGE/ANG. _____

EXPLORATION DEPT

SHEET 4 OF 4

E. _____ DIP _____
 ELEV. _____ DIP _____
 AZ. _____ DIP _____

LOGGED BY: _____
 DATE _____

RECORDING JOINTING

FROM	TO	DESCRIPTION	FROM	TO	SAMPLE NO.	LENGTH	GR. T.	KG. %	CORE ANGLE	CORE INGS
189	212	BRICK RED, COARSE-GRAINED, NON-FOLIATED, MAGNESITE	185	195	15519	10	100	95%	45°	MW
		QUARTZ-TALC ROCK WITH OCCASIONAL MAFIC BANDING	195	205	20	10	100	100	45	CAL MIN
		@ 25° (1 per ft.) (1/16" to 1/4"), AND FEW THIN (1/4" TO 1")	205	215	15521	10	100	100	35	CAL TALS
		(QUARTZ STR.) @ 15, 35, 55° (1 per 5 ft.) 199'-201' - QTR STR 2000								
		MINERALOGY: MAGNESITE - 50%								
		QUARTZ - 15%								
		TALC - 14%								
		MAFIC - 20%								
		HEMATITE + SULPHIDES - 1%								
212	250'	GREY-GREEN OR PALE ORANGE, COARSE-GRAINED, NON-FOLIATED, MAGNETIC TALC ROCK WITH SILICIFIED ZONES	215	225	15522	10	100	95	55	OR
		SURROUNDING MAGNETITE-QUARTZ ± TALC VONING. AT	225	235	23	10	100	95	55	CAL
		223'-227', 243'-250' - 25° CA. (25% VONING) (1/4" TO 6")	235	245	24	10	100	85	0,20	TALC
		GENERALLY - 1 per 5 ft. (STR.)	245	250	15525	5	100	90	0,65	OR FE
		MINERALOGY: MAGNETITE - 45%								
		TALC - 25%								
		QUARTZ - 15%								
		MAFICS - 14%								
		HEM. + SULPH - 1%								

END = 250'

LOCATION

P850095 DeLoro Twp

PAMOUR PORCUPINE MINES LTD.

HOLE NO. PM 85 1

N. 7400N

FOOTAGE/ANG. 0' - 40°SE

EXPLORATION DEPT

SHEET 1 OF 3

E. 0400E

DIP _____ 250' DEPTH

AZ. 150°AZ

DIP _____

NO CORE

LOGGED BY: J. Houle
DATE: MAY 22/85

% REC. JOINTING

FROM	TO	DESCRIPTION	FROM	TO	SAMPLE NO.	LENGTH	QZ	ROD	CA	CONT.
0	11	LOST CORE / OVBURDEN								
11	56	PINK TO GREENISH GREY, COARSE - GRAINED, NON-FOLIATED MAGNESITE-TALC ROCK WITH OCCASIONAL MAGNESITE- QUARTZ STREAKS @ 60°; 1/4" TO 2"; 1 PER 2 FT. 11'-14' - BROKEN CORE, FRACTURED. ROD=0 20' - E-STRIKES FRACTURE @ 90° MINERALOGY: MAGNESITE - 45% TALC - 25% QUARTZ - 15% MAGNET - 14% SPR. HEMATITE / JEMMID - 1%	11	20	15578	9	90	65	50°	FE TALC
			20	30	79	10	100	95	40°	TALC
			30	40	80	10	100	95	50°	FE TALC
			40	50	81	10	100	80	25°	FE TALC
			50	60	82	10	100	85	60°	TALC
56	69	PINK, COARSE - GRAINED, NON-FOLIATED MAGNESITE-TALC ROCK WITH ABUNDANT MAGNESITE - QUARTZ VEINING @ 15°, 55°; 56'-64' - 90% VEINING CONTAINS 65% QZ; 25% MAGNET 64'-69' - 1/2" TO 1"; 1 PER FT. MAINLY QUARTZ MINERALOGY: MAGNESITE - 40% QUARTZ - 40%	60	70	1583	10	100	95	50°	TALC

PAMOUR PORCUPINE MINES LTD.

EXPLORATION DEPT

HOLE NO. PM 85-1

SHEET 3 OF 3

LOCATION _____

N. _____ FOOTAGE/ANG. _____

E. _____ DIP _____

ELEV. _____ DIP _____

AZ. _____ DIP _____

LOGGED BY: _____
DATE _____

Dr. JONING

FROM	TO	DESCRIPTION	FROM	TO	SAMPLE NO.	LENGTH	SG	RD	CA	Other
		MINERALOGY: MAGNETITE - 45%								
		QUARTZ - 25%								
		TALC - 15%								
		MAFICS - 14%								
		SPECIMEN/SUBSTRATE - 1%								
161'	250'	PINK TO GRAY, NON-FOLIATED, COARSE-GRAINED	160	170	15573	10	100	100	60	Mag
		MAGNETITE-TALC ROCK WITH FEW THIN MAGNETITE	170	180	94	10	100	95	55	Mag
		QUARTZ STUNGERS @ 60°; 1/4" TO 1"; 1 PER FT.	180	190	95	10	100	90	45	Mag
		CONSIDERABLE MAFIC BRANDING THROUGHOUT AT ALL LEVELS.	190	200	96	10	100	100	90	Calc
		MINERALOGY: MAGNETITE - 40%	200	210	97	10	100	90	60	Mag
		TALC - 20%	210	220	98	10	100	95	55	Mag
		QUARTZ - 20%	220	230	99	10	100	90	80	Mag
		MAFICS - 19%	230	240	15600	10	100	100	55	Mag
		SPECIMEN/SUBSTRATE - 1%	240	250	15601	10	100	95	60	Mag
222'	227'	MEDIUM-GRAINED, PINK-GREEN ACTINOLITE ZONE								
		WITH SOME 1 PER FT. @ 60° & PYQUARTZ								
299'		6" QUARTZ-MAGNETITE VENE @ 15°								
210'		QUARTZ - CALCITE PER (1/4") @ 25° w/ VGS.								

EM = 250'

[Signature]

LOCATION _____

PAMOUR PORCUPINE MINES LTD.

HOLE NO. PH 85 #3

N. _____ FOOTAGE/ANG. _____

EXPLORATION DEPT

SHEET 6 OF 6

E. _____ DIP _____

ELEV. _____ DIP _____

AZ. _____ DIP _____

LOGGED BY: _____
DATE _____

% ore Journal

FROM	TO	DESCRIPTION	FROM	TO	SAMPLE NO.	LENGTH	Fe	ROD	CA	CONT.
216	240	Pale Green to Brown, coarse-grained, non-foliated	216	225	C 1557A	9	100	95	50	Ca
		Magnetite - Quartz rock with abundant quartz	225	235	75	10	100	90	65	Ca
		Magnetite - ^{Mafic} Stratiform @ 20°, 50°, 1/4" to 6"; 1 cm 2 ft.	235	240	76	5	100	85	90	Fe
		MINERALOGY: Magnetite - 60%			236, 238					
		Quartz - 20%			Fe-stained					
		Talc - 15%			Fluorite					
		Mafics - 4%			(unidentified?)					
		Sulphides / sp. Hem. - 1%								
240	250	Pale Green to Pink, coarse-grained, locally-foliated (75)	240	250	77	10	100	90	65	Fe
		Magnetite - Talc rock								
		MINERALOGY: Magnetite - 50%								
		Talc - 30%								
		Quartz - 10%								
		Mafics - 9%								
		Sulph / ^{sp. Hem.} Hematite - 1%								
			EOM = 250'							

LOCATION P781232 SECOO TWP
 N. 15400N FOOTAGE/ANG. 0' - 40°N
 E. 15150E DIP _____ DEPTH - 190'
 ELEV. _____ DIP _____
 AZ. 0° AZ DIP _____ NQ CORE

PAMOUR PORCUPINE MINES LTD.
 EXPLORATION DEPT

HOLE NO. PM 854
 SHEET 1 OF 4
 LOGGED BY: J MOORE
 DATE MAY 23/85

ERR. JOHNS

FROM	TO	DESCRIPTION	FROM	TO	SAMPLE NO.	LENGTH	Fe	Ca	Ca	Com.
0	7	OVERBURDEN / LOST CORE					0%			
7	29	GREY; GRAIN <u>COARSE - GRAINED, NON-FOLIATED</u> MAGNETITE - QUARTZ ROCK WITH ABUNDANT MAGNETITE - QUARTZ VEINING @ 10°, 40°, 55°; 1/4" TO 2", 1 PER FT. 7'-15', 18' - FE-STAINED, BROKEN CORE - SURFACE WEATHERING. MINERALOGY: MAGNETITE - 45% QUARTZ - 25% TALC - 15% HALOS - 14% SPECIMEN/SPLINTERS - 1%	7	10	15602	3	90%	50%	20%	Fe
			10	20	3	10	100%	50%	70%	Fe
			20	30	4	10	100%	90%	35%	Talc
29	52.5'	PINKISH GREY, MEDIUM TO COARSE GRAINED, NON-FOLIATED MAGNETITE QUARTZ ROCK WITH ABUNDANT QUARTZ MAGNETITE VEINING @ 25°, 50°, 70°; 1/4" TO 1"; 2 PER FT. WITH ASSOCIATED SILICIFIED HALOS. MINERALOGY: MAGNETITE - 50% QUARTZ - 30% TALC - 10%	30	40	5	10	100%	90%	30%	Calc
			40	50	15606	10	100%	95%	30%	Calc

LOCATION _____

PAMOUR PORCUPINE MINES LTD.

HOLE NO. PM-85-4

N. _____ FOOTAGE/ANG. _____

EXPLORATION DEPT

SHEET 2 OF 4

E. _____ DIP _____

ELEV. _____ DIP _____

AZ. _____ DIP _____

LOGGED BY: _____
DATE _____

2 JAC JOINTING

FROM	TO	DESCRIPTION	FROM	TO	SAMPLE NO.	LENGTH	% GRT.	FeO	Ca	Other
		MARCS - 9%								
		SPEC. MEM. / SUPM. - 1%								
52.5	92'	GREY TO BROWN, NON-FOLIATED, COARSE-GRAINED MAGNESITE - TALC ROCK WITH OCCASIONAL ^{PAGE} ORANGE MAGNESITE - TALC STAINING @ 40, 10, 1/8" TO 1/2", 1 PER 5 FT. ALSO WITH OCCASIONAL MAFIC BANDS @ 30, 1/8" TO 1/8", 1 PER FT.	50	60	15607	10	100	90	45	Calc Fe
		MAGNESITE - TALC	60	70	8	10	100	80	30	Calc Fe
		MAGNESITE - TALC	70	80	9	10	95	70	30	Calc Fe
		MAGNESITE - TALC	80	90	15610	10	100	90	45	Calc Fe
		MAGNESITE - 50%								
		TALC - 30%								
		QUARTZ - 5%								
		MARCS - 14%								
		SPEC. MEM. / SUPM. - 1%								
		60'-61'- FT - STAINING - WATER COURSE?								
		72'-85'- " " " "								
92'	106'	PALE GREEN TO TAN, MEDIUM TO COARSE-GRAINED, FOLIATED (45°) MAGNESITE - TALC ROCK WITH ABUNDANT MAGNESITE - QUARTZ STAINING @ 45, 20; 1/4" TO 1"; 2 PER FT. WITH ASSOCIATED MAFIC BANDING (CALCUL)	90	100	11	10	100	95	45	Calc Fe
		MAGNESITE - TALC	100	110	15612	10	100	100	50	Calc Fe

LOCATION _____

PAMOUR PORCUPINE MINES LTD.

HOLE NO. PM 854

N. _____

FOOTAGE/ANG. _____

EXPLORATION DEPT

SHEET 3 OF 4

E. _____

DIP _____

ELEV. _____

DIP _____

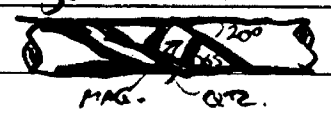
AZ. _____

DIP _____

LOGGED BY: _____
DATE _____

$\frac{1}{2}$ REC. JOINTING

FROM	TO	DESCRIPTION	FROM	TO	SAMPLE NO.	LENGTH	AR. D.T.	RED	CA	CON.
		MINERALOGY: MAGNESITE - 40%								
		TALC - 30%								
		QUARTZ - 10%								
		MAFICS - 19%								
		SUPERFINE SPEC FROM - 1%								
100	130	BUFF TO GREENISH GRAY, NON-FOLIATED, MEDIUM GRAIN WITH MAFIC SPECKS. MAGNESITE ROCK WITH ABUNDANT MAGNESITE - JOINTING (AND ASSOCIATED SILICIFICATION) @ 20°, 65°, 1/16" TO 1'; 4 PER FT.	110	120	156/13	10	100	100	30°	MA FE
		MINERALOGY: MAGNESITE - 80%	120	130		10	100	100	10°	ONE
		QUARTZ - 18%								
		TALC - 1%								
		MAFICS - 1%								
130	135	TRANSITION ZONE - MAGNESITE ROCK TO CARBONATED BASALT. LIGHT TO DARK GREEN, FINE TO MOD. GRAIN, NON-FOLIATED. HIGHLY CARBONATED WITH ABUNDANT DISSEMINATED PYRITE. MAGNESITE = QUARTZ STRENGTH THROUGHOUT @ 10°, 55°, 1/8" TO 1/2"; 2/FT	130	135	156/14	5	100	100	-	-



PAMOUR PORCUPINE MINES LTD.

EXPLORATION DEPT

HOLE NO. PM 854

SHEET 4 OF 4

LOGGED BY: _____
DATE _____

LOCATION _____

N. _____ FOOTAGE/ANG. _____

E. _____ DIP _____

ELEV. _____ DIP _____

AZ. _____ DIP _____

% RE JOURNALING

FROM	TO	DESCRIPTION	FROM	TO	SAMPLE NO.	LENGTH	RE	FOOT	CL	COUNT
		MINERALOGY: MAGNETITE - 35%								
		QUARTZ - 15%								
		TALC - 5%								
		MAFICS - 35%								
		TYRITE - 10%								
135'	190'	DARK GREEN, FINE-GRAINED, FOLIATED ^{CALCIFIED} AND FRAGMENT WITH	135	140	15/15	5	100	100	15°	Calc
		BROWN, COARSE-GRAINED PORPHYROBLASTS OF CALCITE	140	150	16	10	100	100	15°	Calc
		AND ANKERITE AGGREGATION THROUGHOUT.	150	160	17	10	100	90	15° 40°	Calc Calc
		OCCASIONAL QUARTZ, OCCASIONAL QUARTZ-ANKERITE	160	170	18	10	100	95	15°	Calc
		STRIKES @ 40° & 10°; 1/8" TO 2"; 1 PER FT.	170	180	19	10	100	75	20°	Calc Calc
		MINERALOGY: MAFICS - 40%	180	190	20	10	100	75	30°	Calc Calc
		QUARTZ - 15%								
		ANKERITE - 20%								
		CALCITE - 15%								
		TALC - 10%								
180'	190'	INCREASES TALC CONTENT TO 30% REFINED								
		EDM = 190'								

[Handwritten signature]

LOCATION P781232

ORORO TWP.

PAMOUR PORCUPINE MINES LTD.

HOLE NO. PM-85-5

N. 175°0N

FOOTAGE/ANG. 0' - 45°S

EXPLORATION DEPT

SHEET 1 OF 3

E. 24°00E

DIP _____ DEPTH 250'

LOGGED BY: J. MOUL

ELEV. _____

DIP _____

DATE MAY 24/85

AZ. 180°AZ

DIP _____

NR CORE

PRE DRILLING

FROM	TO	DESCRIPTION	FROM	TO	SAMPLE NO.	LENGTH	%	RD	CA	Comp.
0	70	OVERSOUND								
70	90	BROWN TO BUFF, COARSE-GRAINED, NON-FOLIATED, WEATHERED MAGNESITE-TALC ROCK WITH ABUNDANT MAGNESITE-TALC MINERALOGY: MAGNESITE - 45% TALC - 40% QUARTZ - 5% MAFICS - 9% SULPHIDES / SPEC. MIN. - 1%	70	80	15621	10	95	75	50-75	Fe
		TALC VEINING @ 60, 20°; 1/4" TO 1"; 1 PER FT.	80	90	27	10	100	75	60	Fe
90	113	GRAY & LIGHT BUFF, COARSE-GRAINED, NON-FOLIATED MAGNESITE-TALC ROCK WITH FEW MAGNESITE-TALC ± QR. MIN. @ 20, 45°; 1 PER 5 FT.; 1/8" TO 1/2"	90	100	23	10	100	90	50	TALC
		MINERALOGY: MAGNESITE - 50% TALC - 40% QUARTZ - 1% MAFICS - 8% SULPHIDES / SPEC. MIN. - 1%	100	110	24	10	100	95	45	TALC

LOCATION _____

PAMOUR PORCUPINE MINES LTD.

HOLE NO. 1485-5

N. _____ FOOTAGE/ANG. _____

EXPLORATION DEPT

SHEET 3 OF 3

E. _____ DIP _____

ELEV. _____ DIP _____

AZ. _____ DIP _____

LOGGED BY: _____
DATE _____

2000 JAMES

FROM	TO	DESCRIPTION	FROM	TO	SAMPLE NO.	LENGTH	DIP	PA	OR	CONT.
142	250	BLACK, FINE TO MED. GRAIN, NON-FOLIATED DIABASE	142	150	15629	8	90	60	65°	OR FE
		DIKE WITH FEW TRAC QUARTZ - ^{calcite +} calcite ^{serp} @ 30°, 45°	150	160	30	10	95	75	90°	OR
		1 per 10 ft.; 1/16" to 1/4"	160	170	31	10	100	75	45°	OR
		MINORALOGY: PLAGIOCLASE - 40% (pink)	170	180	32	10	95	75	65°	OR
		SERPENTINE - 20% (green)	180	190	33	10	100	90	15°	OR
		OTHER MIN. - 39%	190	200	34	10	100	85	35°	OR
		SULPHIDE, non - 1% ASSOC. BLOSS. of MARBLE	200	210	35	10	100	90	50°	OR
			210	220	36	10	100	90	30°	OR
		233'-237' - 4' Green	220	230	37	10	95	80	85°	OR
			230	240	38	10	60%	80	150°	OR
			240	250	15639	10	100	90	45°	OR
		BDH = 250'								

A M O U P

[Handwritten signature]

LOCATION P781232 DEWORO TWP.
 N. 17100N FOOTAGE/ANG. 0' - 45°S
 E. 32100E DIP _____ DEPTH - 250'
 AZ. 180°R DIP _____
NQ CORE

PAMOUR PORCUPINE MINES LTD.
 EXPLORATION DEPT

HOLE NO. PM 856
 SHEET 1 OF 5
 LOGGED BY: J. HOWLE
 DATE 24/5/85

7.000. JINING

FROM	TO	DESCRIPTION	FROM	TO	SAMPLE NO.	LENGTH	GR. T.	P.D.	CA	Comp.
0	4	OVERSUNION / LOST CORE								
4	19	GRN TO BUFF, MED. TO FINE GRANOS, POORLY FOLIATED (60°) MAGNESITE-QUARTZ ROCK WITH ABUNDANT QUARTZ-MAGNESITE VENS @ 65, 45°; UP TO 1" THICK. 4'-11" - RUSTY SURFACE - WEATHERED FRACTURES. MINERALOGY: MAGNESITE - 65% QUARTZ - 20% TALC - 7% MAFICS - 7% SP. MIN. / SIL. MIN. - 1%	4	10	15640	6	90	75	60°	FE
			10	20	41	10	100	75	50°	FE
19	39	BUFF TO PALE GREEN, FINE GRANOS, WEAK - FOLIATED (55°) MAGNESITE-TALC ROCK WITH ABUNDANT THIN QUARTZ-GRAN TALC-MAGNESITE SPHS @ 55°, 1/16" TO 1/4" - 2 PER FT. MINERALOGY: MAGNESITE - 50% SERPENTINE TALC - 25% STARTING AT 31' QUARTZ - 9% INCREASING WITH SERPENTINE = 15% DEPTH TO 30% SP. MIN. / SP. MIN. 1%	20	30	42	10	100	50	55°	SPH
			30	39	43	9	100	60	40° 55°	SPH

LOCATION _____

PAMOUR PORCUPINE MINES LTD.

HOLE NO. PM 856

N. _____ FOOTAGE / ANG. _____

EXPLORATION DEPT

SHEET 2 OF 5

E. _____ DIP _____

ELEV. _____ DIP _____

AZ. _____ DIP _____

LOGGED BY: _____
DATE _____

2. REC. JOINTING

FROM	TO	DESCRIPTION	FROM	TO	SAMPLE NO.	LENGTH	<i>2</i> D.P.T.	RD	CA	Com.
39	54	DARK GRAY COARSE-GRAINED, NON-FOLIATED SERPENTINE - MAGNETITE-TALC ROCK WITH FINE THIN MAGNETITE-TALC STRINGS @ 35°-55°; 1/8" TO 1"; 1 per 2 FT. <u>CONTACT GRADATIONAL.</u>	39	54	7344	15	100	90	60°	
		MICROSCOPY: SERPENTINE - 20%								
		MAGNETITE - 50%								
		TALC - 20%								
		MAFICS - 3%								
		SP. HEMATITE - 2%								
		QUARTZ - 5%								
54	62	PALE GREEN TO BUFF, FINE TO COARSE-GRAINED, FOLIATED MAGNETITE-TALC ROCK WITH ABUNDANT MAGNETITE-TALC QUARTZ VEINING @ 45° 1/4" TO 6" 1 per FT.	54	62	45	8	100	90	45°	Fe
		MICROSCOPY: MAGNETITE - 50%								
		TALC - 20%								
		SERPENTINE - 20%								
		MAFICS - 4%								
		SP. HEMATITE - 1%								
		QUARTZ - 5%								

*6i-Fe-STAINING, calcite
CORE (with calcite?)*

LOCATION _____

PAMOUR PORCUPINE MINES LTD.

HOLE NO. PM-85-6

N. _____ FOOTAGE/ANG. _____

EXPLORATION DEPT

SHEET 3 OF 5

E. _____ DIP _____

ELEV. _____ DIP _____

AZ. _____ DIP _____

LOGGED BY: _____
DATE _____

2 REC JOINTS

FROM	TO	DESCRIPTION	FROM	TO	SAMPLE NO.	LENGTH	%	P20	CA	LOG
62	119	BLACK + BUFF, MEDIUM - GRAIN, NON-FOLIATED SERPENTINE - MAGNETITE BRECCIA WITH "ALLIGATOR- SKIN" TEXTURE; WITH ABUNDANT MAGNETITE - TALC DIPPING @ 60°, 1/8" TO 1"; 1 PER FT.	62	70	46	8	100	95	60°	TALC
			70	80	47	10	100	95	25-30°	ORC TALC
			80	90	48	10	100	100	45-60°	TALC
			90	100	49	10	100	100	20°	TALC
		106-109' - INTENSIVE VORING @ 50° w/ ^{WAGY} CALCITE VORING @ 20° AND PSEUDOMORPHIC REPLACEMENT ^{HARD} OF SERP. FRAG'S BY MAGNET.	100	110	50	10	100	90	20°	ORC TALC
			110	119	51	9	100	100	50°	TALC
		MINERALOGY: SERPENTINE - 55% MAGNETITE - 35% TALC - 15% QUARTZ - 5% MAGNET. - 4% SP. MIN. - 1%								
119	162	GREENISH GRAY, FINE TO COARSE GRAIN, LOCALLY WELLS (75°) FOLIATED MAGNETITE - TALC ROCK WITH FOLICIT "ALLIGATOR- SKIN" TEXTURE; WITH ABUNDANT MAGNETITE - TALC DIPPING @ 75-85°; 2 PER FT. 1/8" TO 1" 128', 136', 142' - FE-STAINING FUCONNET @ 70°	119	130	52	11	100	95	65°	TALC
			130	140	53	10	100	90	65°	TALC
			140	150	54	10	100	95	55°	TALC
			150	162	55	12	100	100	55°	TALC

PAMOUR PORCUPINE MINES LTD.

EXPLORATION DEPT

HOLE NO. PM-85-6

SHEET 5 OF 5

LOCATION _____

N. _____ FOOTAGE/ANG. _____

E. _____ DIP _____

ELEV. _____ DIP _____

AZ. _____ DIP _____

LOGGED BY: _____
DATE _____

% REC. JOINTING

FROM	TO	DESCRIPTION	FROM	TO	SAMPLE NO.	LENGTH	FEET	RD	CA	DIP
193	200	Grey and locally greenish, fine to coarse grained, locally well-foliated serpentinite - magnesite - talc	193	200	C15661	7	100	95	70	
		Rock with abundant magnesite - talc spots @ 55°; 1/8" to 1" thick; 2 per ft.	200	210	62	10	100	95	50	
			210	220	63	10	100	95	65	
			220	226	64	2	30	25	45	
		MINERALOGY: Serpentinite - 20% <i>w/ Fe (Faint?)</i>								
		Magnesite - 45%								
		Talc - 30%								
		Quartz - 1%								
		Micas - 4%								
		Spec. non/sulfurates - 1%								
226	230	Block + ^{near green} coarse-grained, non-foliated serpentinite - magnesite matrix. with abundant magnesite - talc - soap	226	230	65	4	100	40	50	
		Spots @ 45°, 1/8" to 1", 2 per ft.	230	240	66	10	100	95	75	
			240	250	67	10	100	90	75	
		MINERALOGY: Serpentinite - 55%								
		Magnesite - 25%								
		Talc - 75%								
		Quartz - 5%								
		Micas - 4%								
		Spec. non/sulfurates - 1%								
										EDM = 250'

LOCATION _____

PAMOUR PORCUPINE MINES LTD.

HOLE NO. PM-85-7

N. _____ FOOTAGE/ANG. _____

EXPLORATION DEPT

SHEET 2 OF 5

E. _____ DIP _____

ELEV. _____ DIP _____

AZ. _____ DIP _____

LOGGED BY: _____
DATE _____

2/5 sec JMB

FROM	TO	DESCRIPTION	FROM	TO	SAMPLE NO.	LENGTH	% T.M.T.	POD	CA	GR
56	68	PALE GREEN TO BUFF, MEDIUM-GRAINED, FOLIATED (45°) MAGNESITE-TALC ROCK WITH OCCASIONAL PTYGMATIC MAGNESITE + QUARTZ STR'S - 1/8" TO 1/4"; 1 PER 2 FT. MINERALOGY: MAGNESITE - 50% 68' - CONTACT TALC - 30% Talc + QUARTZ - 5% small @ 50 MAGNESITE - 5% SPEC. MEM./SUMM. - TR	56	68	15773	12	100	95	70° 45°	FE CA
68'	91'	DARK GRAY, MEDIUM-GRAINED, NON-FOLIATED SERPENTINE-MAGNESITE ROCK WITH OCCASIONAL MAGNESITE-TALC ± QUARTZ STR'S @ 45°; 1 PER FT; 1/8" TO 1" MINERALOGY: SERPENTINE - 25% 91' - CONTACT MAGNESITE - 45% FIBRY TALC - 25% OVER 2" QUARTZ - 4% SPEC. MEM./SUMM. - 1%	68	80	74	12	100	100	55°	TR
			80	91	75	11	100	100	60° 0	TR

LOCATION _____

PAMOUR PORCUPINE MINES LTD.

HOLE NO. PM 857

N. _____ FOOTAGE/ANG. _____

EXPLORATION DEPT

SHEET 5 OF 5

E. _____ DIP _____

ELEV. _____ DIP _____

AZ. _____ DIP _____

LOGGED BY: _____
DATE _____

LABOR JOINING

FROM	TO	DESCRIPTION	FROM	TO	SAMPLE NO.	LENGTH	GRF	PQ	CA	COMP
178	185	PALE GREEN NON-FOLIATED, FINE-GRAINED, MAGNESITE- SERPENTINE ^{ROCK} WITH OCCASIONAL OK. GREEN SERPENTINE BANDS @ 45°, 2 per ft.; 1/8" TO 1.5" 185' - CONTACT	178	185	1585	7	100	100	65°	50%
		MICROLOGY: MAGNESITE - - - 40% SHARP @ 40°								
		SERPENTINE - - - 50% 181' - FR -SMP.								
		TALC - - - TR MYLONITE								
		QUARTZ - - - 5% Zone @ 70°								
		SP. NON/SULPH. - - - 5%								
185	190	BLACK AND GREEN, BRUCIATED, NON-FOLIATED, MED- GRAINED SERPENTINITE ROCK WITH OCCASIONAL GREY QUARTZ + SERPENTINE SPINDLES @ 50°, 25°; 1/8" TO 6" Zone	185	190	86	5	100	100	45°	Ser
		1 PER 2 FT. MAGNESITE INFILLING DECREASE AFTER 191' (20' TO 21')	190	200	87	10	100	90	15° 30°	Ser
		MICROLOGY: SERPENTINE - - - 70% 189' - FR -SMP.	200	210	88	10	100	95	10°	Ser
		QUARTZ - - - 5% MYLONITE	210	220	89	10	100	100	15°	Ser
		MAGNESITE - - - 20% Zone @ 45°	220	230	90	10	100	95	20° 10°	Ser
		MAFICS - - - 5% 195' - FRACT. CORE.	230	240	91	10	100	90	20°	Md
		SP. NON/SULPH. - - - TR NOTE: (FR. FRCT. CORE) 195' - FRACT. CORE.	240	250	5692	10	100	90	50°	Ser
		EDM = 250 (L.M.)								

ONTARIO GEOLOGICAL SURVEY
ASSESSMENT FILES
RESEARCH OFFICE
MAY 7 1986
RECEIVED



#1211
W 8606-121 Mining



42A065W0001 29 DELORO

900

Name and Address of Recorded Holder
PAMOUR PORCUPINE MINES LTD.
 P.O. BAG. 2010 TIMMIN ONT.

Summary of Work Performance and Distribution of Credits

Total Work Days Cr. claimed	Mining Claim			Work Days Cr.	Mining Claim			Work Days Cr.
	Prefix	Number	Work Days Cr.		Prefix	Number	Work Days Cr.	
1790	P	850090	200	P	850098	120		
1940		91	120		724612	120		
		92	120		724613	120		
		93	120		725183	110		
		94	200		725184	-		
		95	200		781232	120		
		96	120					
		97	120					

- for Performance of the following work. (Check one only)
- Manual Work
 - Shaft Sinking Drifting or other Lateral Work.
 - Compressed Air, other Power driven or mechanical equip.
 - Power Stripping
 - Diamond or other Core drilling
 - Land Survey

RECEIVED
 APR 21 1986
 PORCUPINE MINING DIVISION

All the work was performed on Mining Claim(s): P-850094-850095-850090-781232-725183

Required Information eg: type of equipment, Names, Addresses, etc. (See Table Below)

- LOUDYEAR SUPER 38 DRILL BELONGING TO J.T. THOMAS DIAMOND DRILLING LTD., P.O. Box 944, TIMMINS, ONT. PAN-745

- DRILLING PERFORMED MAY 1, 1985 TO MAY 31, 1985

- 8 HOLES DRILLED TOTALLING 1940' (ALL NQ SIZE) (REFER TO LOGS AND MAPS ATTACHED) USING 1790'

- NOTE: 150 FEET KEPT IN RESERVE FOR COMING P25184 PENDING RELIEF FROM FOR FUTURE.

RECORDED
 MAR 21 1986

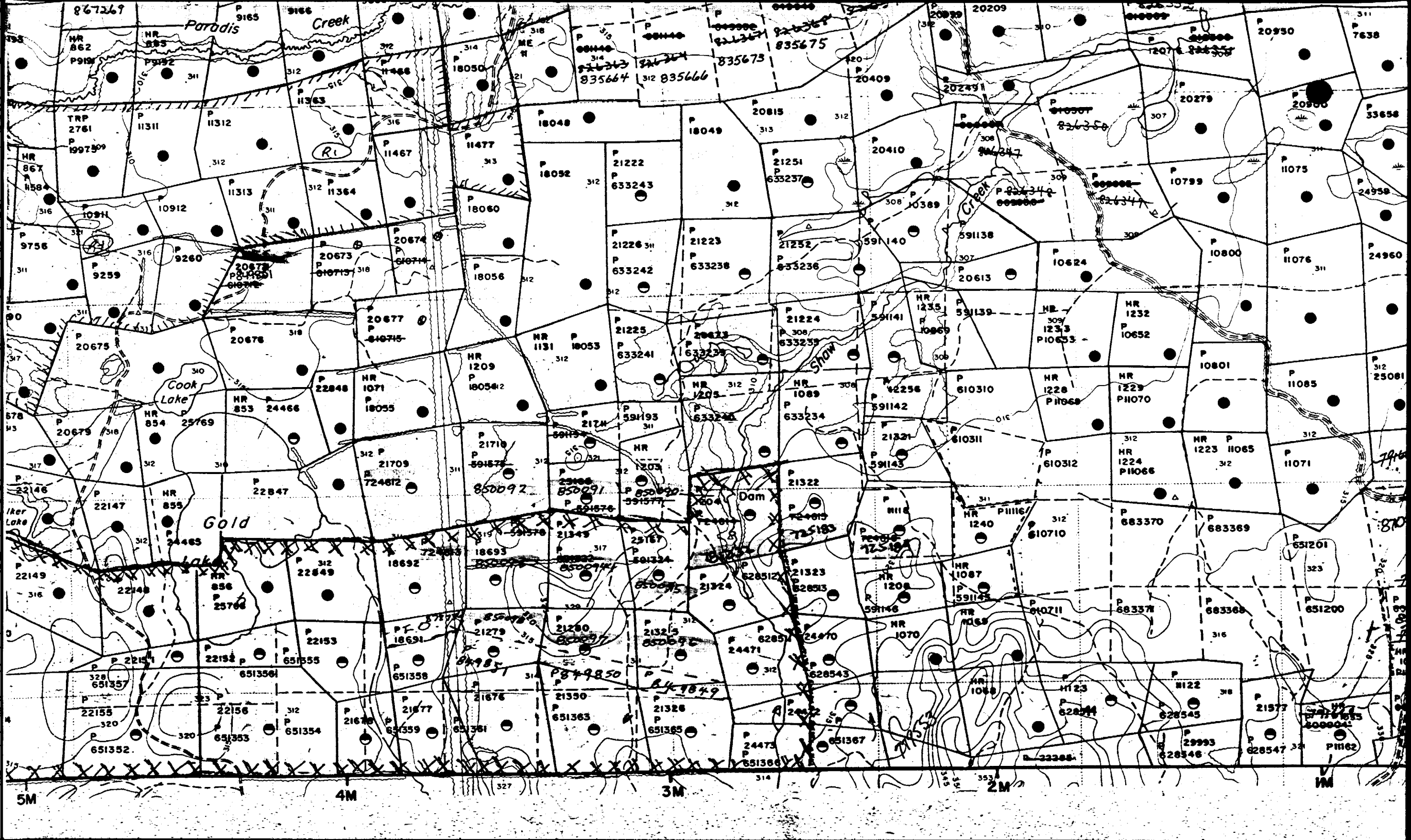
Date of Report: 21/4/86
 Recorded Holder or Agent (Signature): [Signature]

Certification/Verifying Report of Work
 I hereby certify that I have a personal and intimate knowledge of the facts set forth in the Report of Work annexed hereto, having performed the work or witnessed same during and/or after its completion and the annexed report is true.

Name and Postal Address of Person Certifying
JACQUES MOREL 703 EYRE BLVD. TIMMINS, ONT.
 PAN-423 267-5803
 Date Certified: 21/4/86
 Certified by (Signature): [Signature]

Table of Information/Attachments Required by the Mining Recorder

Type of Work	Other information (Common to 2 or more types)	Attachments
Manual Work	Names and addresses of men who performed manual work/operated equipment, together with dates and hours of employment.	Work Sketch: these are required to show the location and extent of work in relation to the nearest claim post.
Shaft Sinking, Drifting or other Lateral Work		
Compressed air, other power driven or mechanical equip.	Names and addresses of owner or operator together with dates when drilling/stripping done.	Work Sketch (as above) in duplicate
Power Stripping		
Diamond or other core drilling	None	None
Land Survey		



Paradis Creek

Cook Lake

Gold Lake

Dam

Show Creek

5M

4M

3M

2M

1M

867269

9165

316

312

314

318

312

316

312

316

312

312

310

310

310

310

310

311

TRP 2761

P 11311

P 11312

P 11313

P 11314

P 11315

P 11316

P 11317

P 11318

P 11319

P 11320

P 11321

P 11322

P 11323

P 11324

P 11325

P 11326

P 11327

P 9756

P 9260

P 9259

P 20674

P 20673

P 20672

P 20671

P 20670

P 20669

P 20668

P 20667

P 20666

P 20665

P 20664

P 20663

P 20662

P 20661

P 20660

P 20675

P 20676

P 20677

P 20678

P 20679

P 20680

P 20681

P 20682

P 20683

P 20684

P 20685

P 20686

P 20687

P 20688

P 20689

P 20690

P 20691

P 20692

P 22146

P 22147

P 22148

P 22149

P 22150

P 22151

P 22152

P 22153

P 22154

P 22155

P 22156

P 22157

P 22158

P 22159

P 22160

P 22161

P 22162

P 22163

P 22151

P 22152

P 22153

P 22154

P 22155

P 22156

P 22157

P 22158

P 22159

P 22160

P 22161

P 22162

P 22163

P 22164

P 22165

P 22166

P 22167

P 22168

P 22155

P 22156

P 22157

P 22158

P 22159

P 22160

P 22161

P 22162

P 22163

P 22164

P 22165

P 22166

P 22167

P 22168

P 22169

P 22170

P 22171

P 22172

P 651352

P 651353

P 651354

P 651355

P 651356

P 651357

P 651358

P 651359

P 651360

P 651361

P 651362

P 651363

P 651364

P 651365

P 651366

P 651367

P 651368

P 651369

P 651352

P 651353

P 651354

P 651355

P 651356

P 651357

P 651358

P 651359

P 651360

P 651361

P 651362

P 651363

P 651364

P 651365

P 651366

P 651367

P 651368

P 651369

P 651352

P 651353

P 651354

P 651355

P 651356

P 651357

P 651358

P 651359

P 651360

P 651361

P 651362

P 651363

P 651364

P 651365

P 651366

P 651367

P 651368

P 651369

