



42A86570078 2.73 PRICE

REPORT  
ACME GAS & OIL  
COVERING AN ELECTROMAGNETIC SURVEY  
ON THEIR CLAIM GROUP IN PRICE TOWNSHIP  
PORCUPINE MINING DIVISION

CLAIMS P-217435-51 - TOTAL OF 17  
SURVEY - CRONE RADEM - VLF - EM

October 1, 1970.

LOCATION & ACCESS

The contiguous group of 17 claims is located in the northwest quadrant of Price Township adjacent to the hydro power line. Access is via the road to Wawatim Falls southwest from Timmins. The claim group is 1 mile east of the road.

GEOLOGY

The claim group, according to O.D.M. Map #47d, 1938, is underlain by Timiskaming-type sediments, including iron formation, and by serpentine.

PREVIOUS GEOPHYSICAL SURVEYS

Airborne magnetometer and electromagnetic surveys outlined on the claim group an intense magnetic high about 1-1/4 miles long, which would appear to be caused by the iron formation mentioned above. Coinciding with this are zones of moderate to strong conductivity suggesting massive sulfides within the iron formation.

LINECUTTING

A 400' line interval grid was cut over the claim group by A. Aubie, P.O. Box 807, Timmins, Ontario. A total of 14.6 miles were cut during the period August 3-17, 1969.

## GEOPHYSICAL INSTRUMENTS & OPERATORS

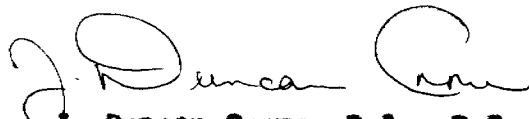
A Crone - RADEM - VLF - EM instrument was used measuring the dip angle of the resultant VLF field in degrees. Accuracy is  $\pm 1^{\circ}$ . VLF station read was Seattle, Washington operating at a frequency of 16.6 KHz. Instrument brochure attached.

Operator was Denis LaForest of P.O. Box 807, Timmins, Ontario, surveying during the period August 17-25, 1969. Total number of stations read was 650.

## INTERPRETATION

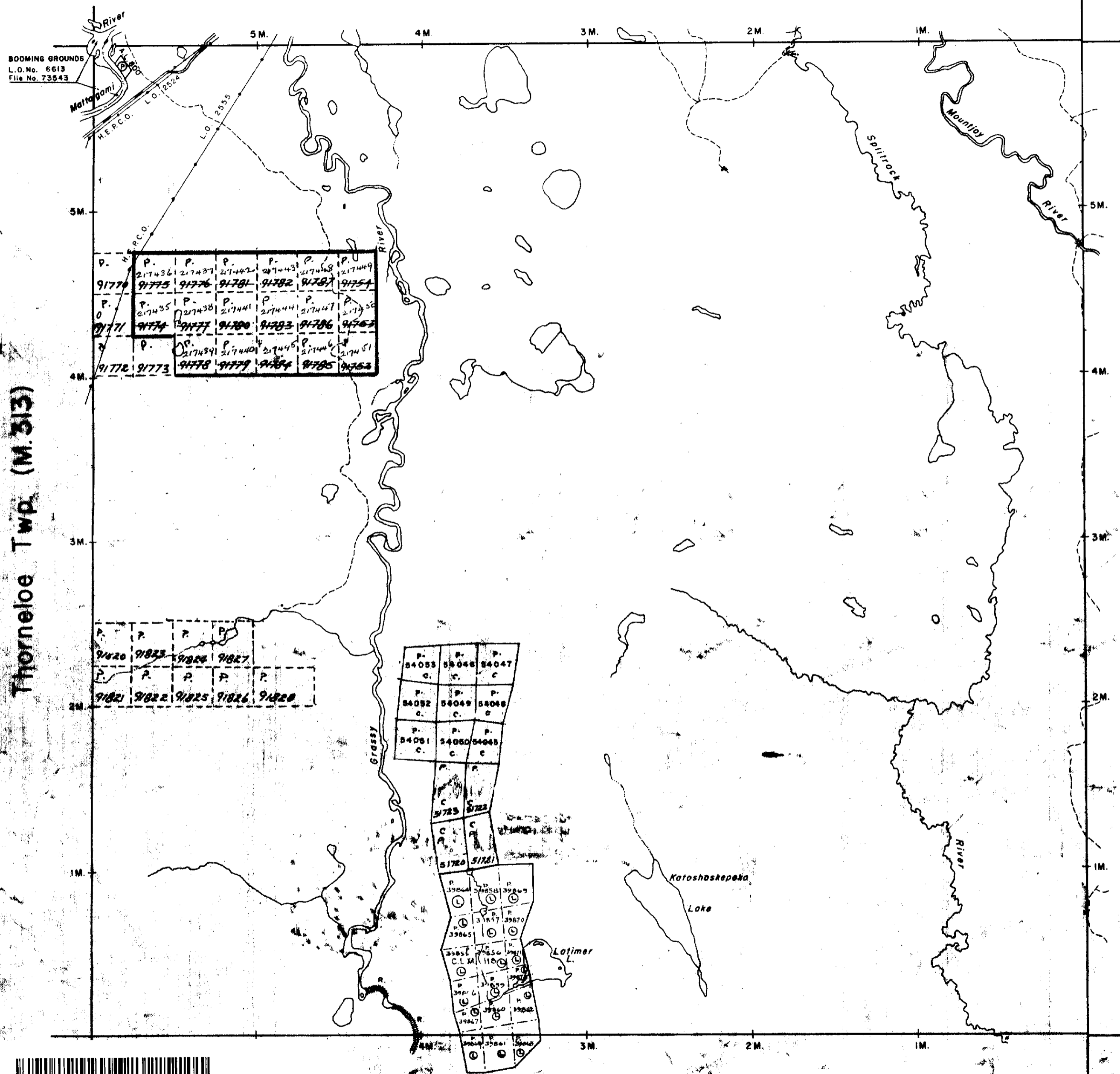
Two parallel east-west conductors A & B were detected that are 6000' long and open to the west. The conductors are narrow in width, near vertical in dip and are covered by shallow overburden. Soil sampling is recommended in the vicinity of the conductors to determine if any values occur along their length.

Respectfully submitted,

  
J. Duncan Crone, B.A., P.Eng.

Geophysicist.

Ogden Twp. (M.305)



BOOMING GROUNDS  
L.O. No. 6613  
File No. 73843

Thorneloe Twp. (M.313)

Adams Twp. (M.261)

Fripp Twp. (M.281)

THE TOWNSHIP OF

PRICE

DISTRICT OF  
TIMISKAMING

PORCUPINE  
MINING DIVISION

SCALE: 1-INCH = 40 CHAINS

LEGEND

PATENTED LAND	Ⓟ
CROWN LAND SALE	C.S.
LEASES	Ⓛ
LOCATED LAND	Loc.
LICENSE OF OCCUPATION	L.O.
MINING RIGHTS ONLY	M.R.O.
SURFACE RIGHTS ONLY	S.R.O.
ROADS	—
IMPROVED ROADS	—
KING'S HIGHWAYS	—
RAILWAYS	—
POWER LINES	—
MARSH OR MUSKES	—
MINES	Ⓜ
CANCELLED	C.

NOTES

400' Surface Rights Reservation around all lakes and rivers.

DATE OF ISSUE  
MAR 19 1969  
ONTARIO DEPT. OF MINES

PLAN NO. M-307

DEPARTMENT OF MINES

- ONTARIO -



42A865W0078 2.73 PRICE

200

Ogden Twp. (M.305)

THE TOWNSHIP OF  
OF  
*CLAIM MAP*  
**PRICE**

DISTRICT OF  
TIMISKAMING

PORCUPINE  
MINING DIVISION

SCALE: 1-INCH = 40 CHAINS

**LEGEND**

PATENTED LAND	⊙
CROWN LAND SALE	C.S.
LEASES	⊕
LOCATED LAND	Loc.
LICENSE OF OCCUPATION	L.O.
MINING RIGHTS ONLY	M.R.O.
SURFACE RIGHTS ONLY	S.R.O.
ROADS	—
IMPROVED ROADS	—
KING'S HIGHWAYS	—
RAILWAYS	—
POWER LINES	—
MARSH OR MUSKEG	—
MINES	⋈
CANCELLED	C.

**NOTES**

400' Surface Rights Reservation around all lakes and rivers.

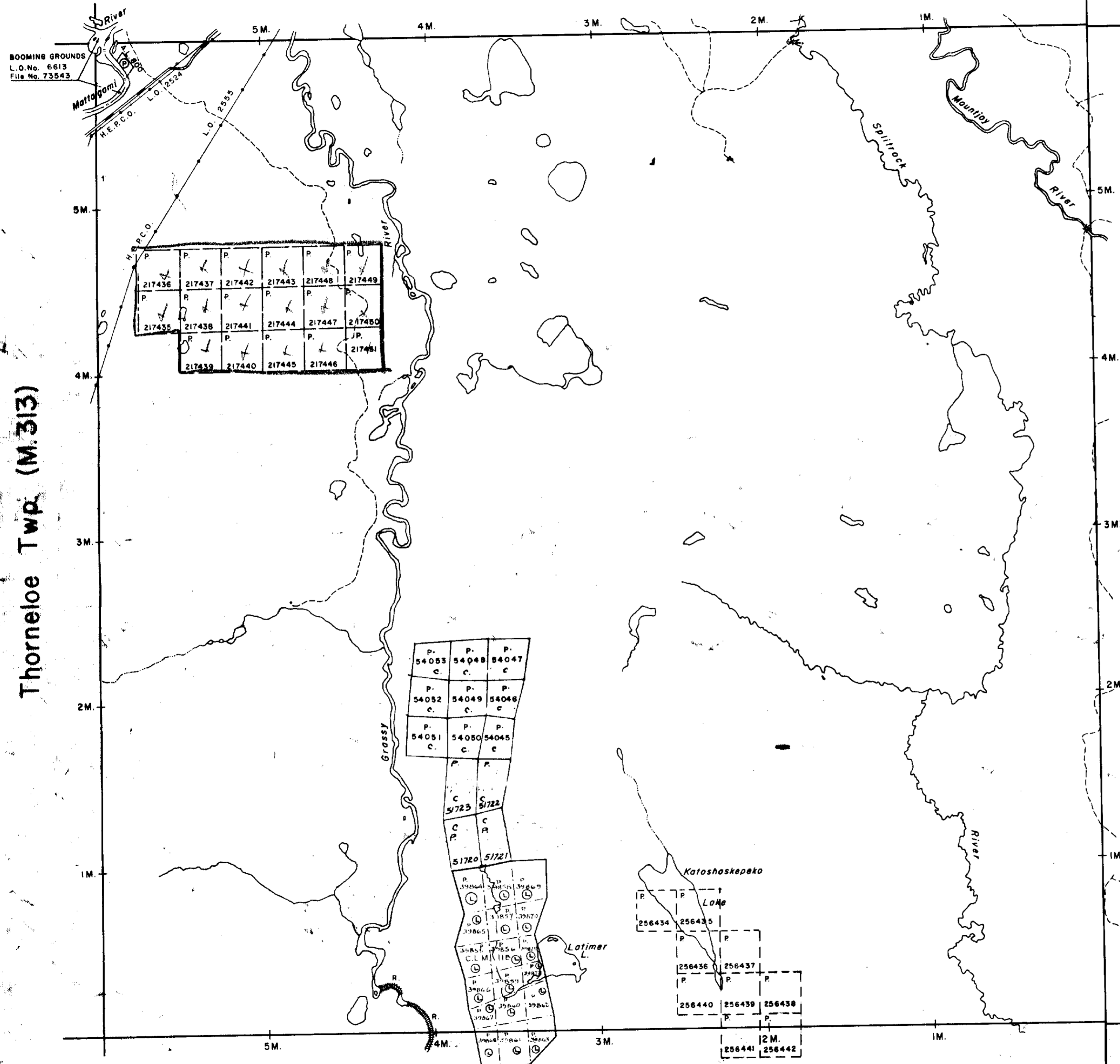
**DATE OF ISSUE**

DEC 17 1970

ONT. DEPT. OF MINES  
AND NORTHERN AFFAIRS

PLAN NO. **M-307**

**ONTARIO  
DEPARTMENT OF MINES  
AND NORTHERN AFFAIRS**



Thorneloe Twp. (M.313)

Adams Twp. (M.261)

Fripp Twp. (M.281)

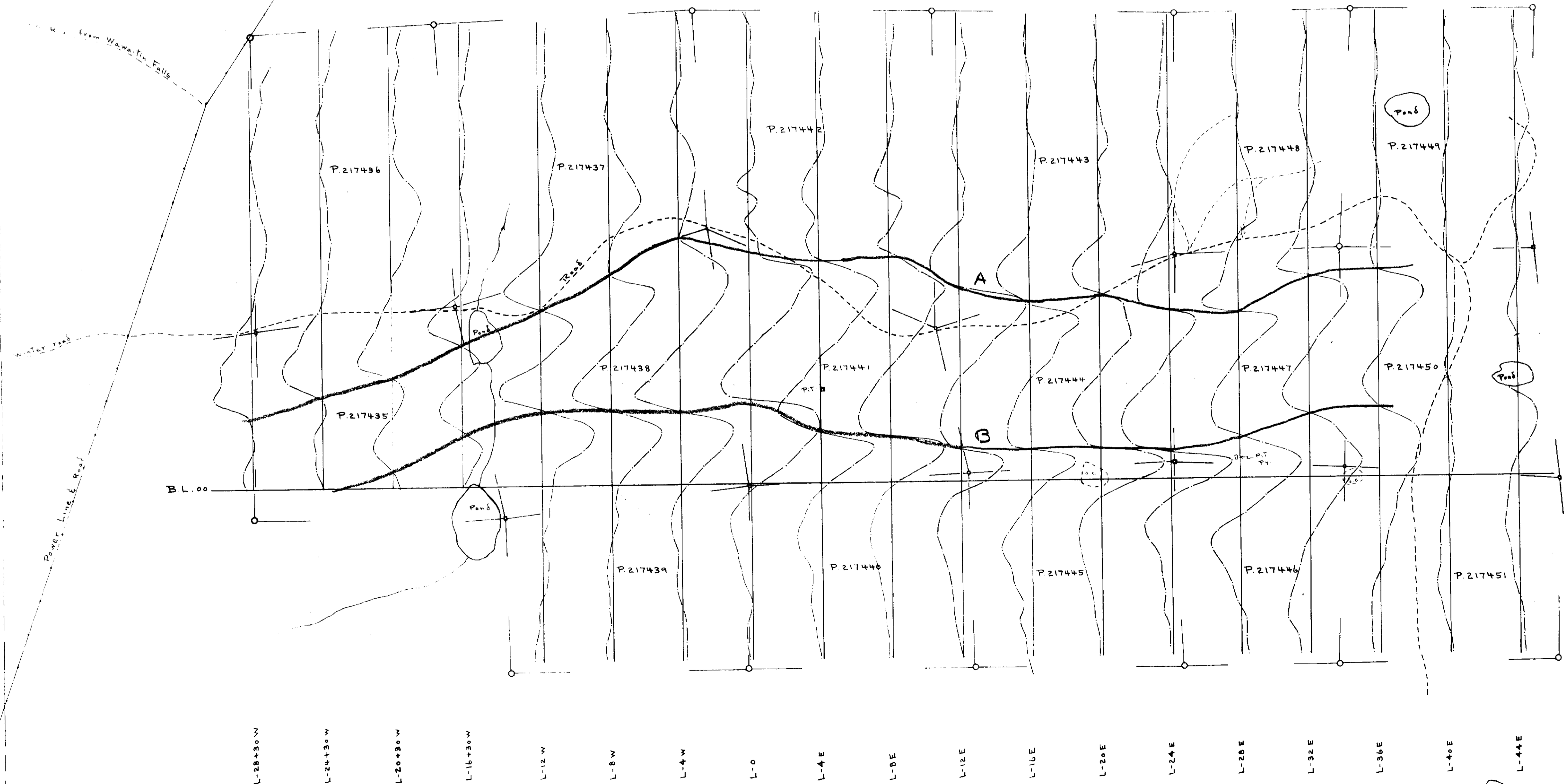
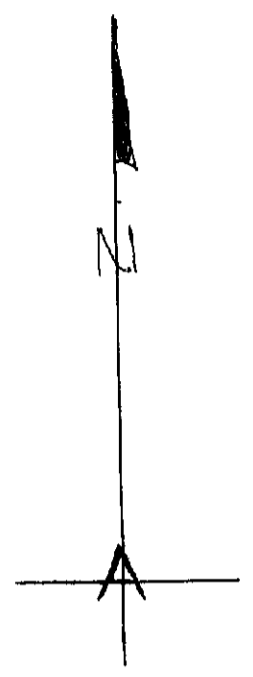


Acme Gas & Oil Ltd.  
 Price Twp  
 Electromagnetic Survey  
 Tadem VLF  
 Trans station: Seattle Wash  
 Map scale: 1"=400'  
 Profile scale: 1"=40'  
 Conductor axis —

Survey Date: Aug 17<sup>th</sup>-25<sup>th</sup>, 1969

- Dip Angle of Resonant VLF  
 Field Measured in Degrees 1" = 40'  
 - Station Seattle Washington 18.6 KHz  
 — CONDUCTOR

*dips plotted west of line!*



*J. Duncan Conn*