



42A06SW8650 21 PRICE

010

DIAMOND DRILLING

TWP/AREA PRICE TWP REPORT NO. 21

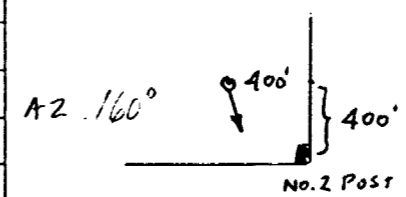

WORK PERFORMED FOR: Matti Kangas

RECORDED HOLDER: SAME AS ABOVE
: OTHER

CLAIM NO.	HOLE NO.	FOOTAGE	DATE	NOTE
880304	MK-933B	222'	May/93	(1)
880304	MK-933A	139.6'	May-June/93	(1)
880307	MK-931	412'	June/93	(1)

NOTES: (1) W 9360.00141, filed May/94.



DRILLING COMPANY SPARTA (L.SALO) DRILLING		COLLAR ELEVATION	BEARING OF HOLE FROM TRUE NORTH S 20° E	TOTAL FOOTAGE 222	DIP OF HOLE AT COLLAR 1 3/16" - 45	LOCATION OF HOLE IN RELATION TO A FIXED POINT ON THE CLAIM 	MAP REFERENCE NO.
DATE HOLE STARTED MAY 27/93	DATE COMPLETED MAY 30/93	DATE LOGGED JULY 3/93	LOGGED BY T.K. O'CONNOR		ft		LOCATION (Tp., Lot, Con. OR Lat. and Long.) PRICE TWP.
EXPLORATION CO., OWNER OR OPTIONEE MATTI KANGAS & JIM CROXALL		DATE SUBMITTED July 12/93	SUBMITTED BY (Signature) 		ft		PROPERTY NAME KANGAS-CROXALL PROPERTY
					ft		

FOOTAGE		ROCK TYPE	DESCRIPTION Colour, grain size, texture, minerals, alteration, etc.	PLANAR FEATURE ANGLE*	CORE SPECIMEN FOOTAGE +	YOUR SAMPLE NUMBER	SAMPLE FOOTAGE		SAMPLE LENGTH	OZ/T ASSAYS + Au	
FROM	TO						FROM	TO			
0	15'	OVERBURDEN	NO CORE								
15'	83.2'	SHEARED MAFIC VOLCANIC (CHLORITIC ALTERATION)	SOFT, FINE GRAINED, DARK TO MEDIUM GREEN CHLORITIC ALTERED MAFIC VOLCANIC WITH ~70-30% CALCITE STRINGERS PARALLEL TO THE FOLIATION @ 30° TO CORE AXIS & PERVASIVE CALCITIC ALTERATION - TRACES TO 1% PYRITE WITH MINOR SERICITE AND WEAK ANKERITIC ALTERATION - SOME SECTIONS OF CORE CONTAIN UP TO 70% CALCITE +/- QZ STRINGERS WITH THE REMAINING 30% = CHLORITE +/- SERICITE. @ 15.6' → 17' - BRECCIATED ANKERITE VEINS WHICH ARE CRUDELY PARALLEL TO THE CORE AXIS; THESE ARE FOLDED & BOUNDARIED WITH CALCITE & QUARTZ IN THE VOIDS. @ 19.8' → 23.1' - LIGHTER GREEN MAFIC VOLCANIC WITH LESS CHLORITE & MORE SERICITE; MINOR QZ-CARBONATE VEINETS ALONG THE NOW FOLDED FOLIATION; MASSIVE PYRITE UP TO 25% OF CORE DISTRIBUTED PREFERENTIALLY ALONG FOLIATION PLANES @ 26.2' & 35.7' - RUSTED VUGGY CORE DUE TO GROUNDWATER LEACHING OF Fe-RICH CARBONATE @ 29.8' → 31.5' - 1-2.5cm WIDE CALCITE WITH LATER QUARTZ "LADDERS" IN VEIN THAT IS FOLDED AND RUNS ALONG CORE AXIS FOR ~1.7'	FOLIATION 30° TO CORE AXIS		420 421 422	20.0 38.5 53.0	23.3 44.0 57.4	3.3' 5.5' 4.4'	0.001 0.001 0.006	

* For features such as foliation, bedding, schistosity, measured from the long axis of the core.

+ Additional credit available. See Assessment Work Regulations.



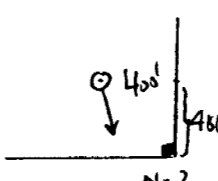
DRILLING COMPANY SPARTA (L.SALO) DRILLING		COLLAR ELEVATION	BEARING OF HOLE FROM TRUE NORTH S20°E	TOTAL FOOTAGE 222	DIP OF HOLE AT 1 3/16" collar -45°	LOCATION OF HOLE IN RELATION TO A FIXED POINT ON THE CLAIM	MAP REFERENCE NO.	CLAIM NO. P-880304
DATE HOLE STARTED MAY 27/93	DATE COMPLETED MAY 30/93	DATE LOGGED JULY 3/93	LOGGED BY T.K. O'CONNOR		ft		LOCATION (Tp., Lot, Con. OR Lot. and Long.) PRICE TWP.	
EXPLORATION CO., OWNER OR OPTIONEE		DATE SUBMITTED	SUBMITTED BY (Signature)		ft		PROPERTY NAME KANGAS CRYSTAL PROPERTY	
					ft			
					ft			

FOOTAGE FROM	TO	ROCK TYPE	DESCRIPTION Colour, grain size, texture, minerals, alteration, etc.	PLANAR FEATURE ANGLE	CORE SPECIMEN FOOTAGE +	YOUR SAMPLE NUMBER	SAMPLE FOOTAGE		SAMPLE LENGTH	oz/t	ASSAYS + Au
							FROM	TO			
15'	83.2	SHEARED MAFIC VOLCANIC (CONTINUED)	@ 38.3' → 44' - HARDER, BLEACHED BUFF GREY TO GREEN SERICITE ALTERED, MODERATELY SILICIFIED SECTION; WITH PLANAR ACCUMULATIONS OR "BANDS" OF PYRITE (~15% OF CORE)								
			@ 52.3' → 57.4' - SAME AS ABOVE EXCEPT CORE IS MAGNETIC AND POSITIVELY MAGNETICALLY SUSCEPTIBLE DUE TO THIN PLANAR WISPS OF MAGNETITE CRYSTALS - 15 → 20 SMALL CHALCOPYRITE CRYSTALS IN A LATE CROSS-CUTTING QUARTZ STRINGER @ 53.2'								
			* SEVERAL SECTIONS OF MAGNETIC, MAGNETITE-BEARING CORE AT 59.4' → 60.2'; 61.5' → 63.1' ETC.								
			@ 64.8' → 65' - CHALCOPYRITE IN CROSS-CUTTING QUARTZ STRINGERS SUBPARALLEL TO FOLIATION @ 30° TO CORE AXIS; FOLIATION = 22° TO CORE AXIS	FOLIATION TO CORE AXIS 22°							
			* UP TO 5cm BANDS OF CALCITE OCCURRING @ > 70'; BOTH FREQUENCY & SIZE OF THESE BANDS INCREASE DOWNHOLE TO THE OUT/CONTACT								
83.2'	86.2'	CALCITE VEIN	MASSIVE RECRYSTALLIZED CALCITE WITH MINOR INTERSTITIAL QUARTZ; BRECCIATED IN SECTIONS WITH ABUNDANT SERICITE > CHLORITE FOLIATION PLANES/ OR CRACK-SEAL TEXTURES			423	83.3	87.2	3.9'		NIL
86.2'	120.4	SHEARED & CARBONATIZED MAFIC VOLCANIC (CHLORITE ALTERED)	MEDIUM TO FINE GRAINED WHITE GREY CALCITE-RICH BANDS (50-60% OF CORE) AND DARK GREEN CHLORITE + MINOR SERICITE BANDS (40-50% OF CORE); AMOUNT OF LIGHT CALCITE/CARBONATE-RICH SECTIONS INCREASES DOWNHOLE. NEAR OUT/CONTACT CARBONATE CHANGES FROM CALCITE TO PINKISH BEIGE ANKERITE	FOLIATION TO CORE-AXIS 20°							
			* LAST 10' OF CORE APPEARS VARIOLITIC TO AMYGDALOIDAL								

* For features such as foliation, bedding, etc., measured from the face of the core

+ Additional credit available. See Assessment Work Regulations.



DRILLING COMPANY SPARTA (L.SALO) DRILLING		COLLAR ELEVATION	BEARING OF HOLE FROM TRUE NORTH S 20° E	TOTAL FOOTAGE 222	DIP OF HOLE AT 1 3/4" collar -45°	LOCATION OF HOLE IN RELATION TO A FIXED POINT ON THE CLAIM A 2 160° 	MAP REFERENCE NO.	CLAIM NO. P-880304
DATE HOLE STARTED MAY 27/93	DATE COMPLETED MAY 30/93	DATE LOGGED JULY 3	LOGGED BY T.K. O'CONNOR		ft		LOCATION (Tp., Lot, Con. OR Lat. and Long.) PRICE TWP.	PROPERTY NAME KANGAS-CROKALL PROPERTY
EXPLORATION CO., OWNER OR OPTIONEE		DATE SUBMITTED	SUBMITTED BY (Signature)		ft			
					ft			

FOOTAGE FROM	TO	ROCK TYPE	DESCRIPTION Colour, grain size, texture, minerals, alteration, etc.	PLANAR FEATURE ANGLE*	CORE SPECIMEN FOOTAGE †	YOUR SAMPLE NUMBER	SAMPLE FOOTAGE		SAMPLE LENGTH	OZ/T	ASSAYS + Au
							FROM	TO			
120.4	122.3	INTERFLOW SHALEY SEDIMENT	VERY FINE GRAINED, BANDED ① DARK GREEN TO BLACK CHLORITIC OR GRAPHITIC ② YELLOWISH BROWN SERICITIC & ③ PYRITIC INTERFLOW SEDIMENTS.			424	120.4	122.3	1.9'		NIL
122.3	150.8	SHEARED & CARBONATIZED MAFIC VOLCANIC	SAME AS 86.2 → 120.4' WITH NARROW MAGNETIC SECTIONS OF MAGNETITE-BEARING FOLIATION PLANES @ ~25° TO CORE AXIS & TRACE PYRITE	FOLIATION 25° TO CORE AXIS		425	126.5	131.7	4.8'		NIL
			@ 126.4 → 131.3' SLIGHTLY HARDER, PYRITIC (15% OF CORE) DARK GREEN SECTION			426	131.7	133.0	1.3'		NIL
			@ 131.3' → 133' - VERY HARD SILICIFIED SECTION OF LIGHT BROWN TO BEIGE ALTERED MAFIC VOLCANIC, THAT IS WEAKLY MAGNETIC WITH 5% DISSEMINATED PYRITE AND TRACE PYRRHOTITE.								
150.8	160.2	SHEARED/FOLIATED SYENITIC DYKE	WELL FOLIATED (MAGNETITE + MICAS) MEDIUM TO COARSE GRAINED ORANGE SYENITIC DYKES WITH BLUE NEPHELINE OR QZ AT IN/CONTACT - VERY HARD ORANGE K-FELDSPAR WITH ABUNDANT LARGE MAGNETITE & BIOTITE (SMALL) CRYSTALS WITH A WEAK SERICITIC ALTERATION & 5 → 10% DISSEMINATED PYRITE			428	150.9	155.2	4.3'		0.001
			@ 157.2' - 20 cm QUARTZ + GREEN TOURMALINE VEIN WITH 5% CARBONATE CRYSTALS & MINOR HYDRO-MUSCOVITE			429	155.2	156.7	1.5'		NIL
			@ 160.1' (= OUT/CONTACT) - 2.5 cm QUARTZ VEIN WITH GREEN TOURMALINE + HYDROMUSCOVITE			430	156.7	159.5	2.8'		NIL

* For features such as foliation, bedding, schistosity, measured from the long axis of the core.

† Additional credit available. See Assessment Work Regulations.



Start a new page for every new hole, but fill in top portion of form only on first page for each hole.

FILL IN ON EVERY PAGE

HOLE NO. MK-933-0
PAGE NO. 4
CLAIM NO. P 880309

DRILLING COMPANY SPARTA (L.SAW) DRILLING		COLLAR ELEVATION	BEARING OF HOLE FROM TRUE NORTH S20°E	TOTAL FOOTAGE 222	DIP OF HOLE AT COLLAR 1 3/16" collar -45°	LOCATION OF HOLE IN RELATION TO A FIXED POINT ON THE CLAIM	MAP REFERENCE NO.
DATE HOLE STARTED MAY 27/93	DATE COMPLETED MAY 30/93	DATE LOGGED JULY 3/93	LOGGED BY T.K. O'CONNOR		ft		LOCATION (Tp., Lot, Con. OR Lat. and Long.) PRICE TWP.
EXPLORATION CO., OWNER OR OPTIONEE		DATE SUBMITTED	SUBMITTED BY (Signature)		ft		PROPERTY NAME KANGAS-CRUXALL PROPERTY
					ft		
					ft		

FOOTAGE FROM	TO	ROCK TYPE	DESCRIPTION Colour, grain size, texture, minerals, alteration, etc.	PLANAR FEATURE ANGLE	CORE SPECIMEN FOOTAGE +	YOUR SAMPLE NUMBER	SAMPLE FOOTAGE		SAMPLE LENGTH	OZ/S	ASSAYS + Au	
							FROM	TO				
160.2	169.9	SHEARED/FOLIATED QUARTZ PORPHYRY	VERY HARD, FOLIATED, LIGHT GREYISH GREENISH YELLOW CORE WITH UP TO 5mm SUB-ROUNDED QUARTZ AUGENS IN A SERICITIC CHLORITIC MATRIX - SERICITE (30%) REPRESENTS A NETWORK OF ANASTOMOSING FOLIATION PLANES "WRAPPING AROUND" QUARTZ AUGENS (60% TO 30%) - UP TO 30% PYRITE IN SECTIONS & MINOR CHLORITE (DIA) - RARE 3-5mm PURE DARK GREEN CHLORITE BANDS.			431	159.5	164.0	4.5'		0.001	
			@ 161.8' - 8cm (TRUE WIDTH) QUARTZ VEIN WITH MINOR GREEN TOURMALINE & 10% SPHALERITE (REDDISH BROWN ZnS)			432	164.0	169.0	5.0'		0.001	
			@ 165.2' - 5cm QUARTZ VEIN WITH GREEN TOURMALINE + HYDROMUSCOVITE									
169.9	173.2	SHEARED/FOLIATED QUARTZ-POOR GRANITIC DYKE	10cm PURE DARK GREEN CHLORITE BAND WITH 5cm QUARTZ VEIN (10% PYRITE) AT IN/CONTACT TO FOLIATED GRANITIC DYKE WITH K-FELD SPAR (65%) QUARTZ (15%) MAGNETITE (10%) BIOTITE (5-6%) & PYRITE (2-3%)			433	169.0	173.5	4.5'		NIL	
			@ 172.1' - 20cm QUARTZ VEIN WITH MINOR ANKERITE, GREEN TOURMALINE, DARK BLACK TO BROWN DRAVITE TOURMALINE & HYDROMUSCOVITE									
173.2	184.8	VARIOLITIC MAFIC FLOW	MEDIUM TO DARK FOREST GREEN CHLORITIC MATRIX TO COARSE (5mm) CALCITE-FILLED VARIOLES									

* For use in logging of tilted, bedding, schistosity, measured from the top edge of the core



Start a new page for every new hole, but fill in top portion of form only on first page for each hole.

FILL IN ON EVERY PAGE

HOLE NO. MK-9338 PAGE NO. 5
CLAIM NO. R-880304

DRILLING COMPANY SPARTA (L. SALO) DRILLING		COLLAR ELEVATION	BEARING OF HOLE FROM TRUE NORTH S 20° E	TOTAL FOOTAGE 222	DIP OF HOLE AT COLLAR 1 3/16" collar - 45°	LOCATION OF HOLE IN RELATION TO A FIXED POINT ON THE CLAIM	MAP REFERENCE NO.
DATE HOLE STARTED MAY 27/93	DATE COMPLETED MAY 30/93	DATE LOGGED JULY 3/93	LOGGED BY T.K. O'CONNOR		ft		LOCATION (Tp., Lot, Con. OR Lat. and Long.) PRICE TWP.
EXPLORATION CO., OWNER OR OPTIONEE		DATE SUBMITTED	SUBMITTED BY (Signature)		ft		PROPERTY NAME KANGAS - CRW & AU PROP.
					ft		
					ft		

FOOTAGE FROM	TO	ROCK TYPE	DESCRIPTION Colour, grain size, texture, minerals, alteration, etc.	PLANAR FEATURE ANGLE *	CORE SPECIMEN FOOTAGE +	YOUR SAMPLE NUMBER	SAMPLE FOOTAGE		SAMPLE LENGTH	OZ/T ASSAYS + AU	
							FROM	TO			
184.8	191.2	SHEARED/FOLIATED TONALITIC DYKE	SILICIFIED & CALCITE ALTERED SHEARED QUARTZ - TONALITIC DYKE WITH QZ + WHITE FELDSPAR (ALBITE) WITH 15% PURITE.			434	185.4	188.7	3.3'		0.001
						435	188.7	191.0	2.3'		0.001
						436	193.7	198.7	5.0		NIL
			5cm CHLORITE BAND w/ 10% PURITE @ OUT/CONTACT								
191.2	222	(EOH)	CHLORITIC & SERICITIC ALTERED FOLIATED AMYGDALOIDAL TO VARIGLITIC BASALT WITH CALCITE-FILLED AMYGDULES/VARIOLLES & QZ - CARB VEWLETS PARALLEL FOLIATION @ 32° TO CORE-AXIS	FOLIATION 32° TO CORE-AXIS							
			@ 196.3 - CHALCOPHYRITE IN FRACTURE PERPENDICULAR TO CORE AXIS								
			* END OF HOLE *								

* For features such as foliation, bedding, schistosity, measured from the top surface of the core

+ Additional credit available. See Assessment Work Regulations.

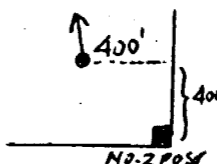
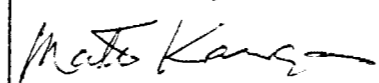


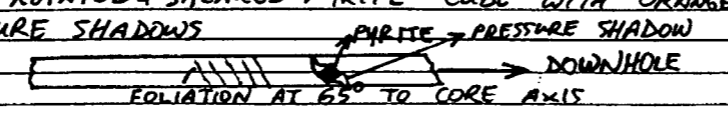
Start a new page for every new hole, but fill in top portion of form only on first page for each hole.

CORE STORED AT M. KANGAS' COTTAGE AT KAMISCOTIA LAKE.

FILL IN ON EVERY PAGE

HOLE NO. MK-933-A PAGE NO. 1

DRILLING COMPANY SPARTA DRILLING - L. SALO		COLLAR ELEVATION	BEARING OF HOLE FROM TRUE NORTH N 20° W	TOTAL FOOTAGE 139.6 FT	DIP OF HOLE AT COLLAR 1 3/16" φ - 45°	LOCATION OF HOLE IN RELATION TO A FIXED POINT ON THE CLAIM AZ. 340° 	MAP REFERENCE NO.	CLAIM NO. P-880304
DATE HOLE STARTED MAY 30/93	DATE COMPLETED JUNE 3/93	DATE LOGGED JUNE 22/93	LOGGED BY T.K. O'CONNOR		ft		LOCATION (Tp., Lot, Con. OR Lot. and Long.) PRICE TWP.	PROPERTY NAME KANGAS-CROXALL PROPERTY
EXPLORATION CO., OWNER OR OPTIONEE MATTI KANGAS & J. CROXALL		DATE SUBMITTED JULY 12/93	SUBMITTED BY (Signature) 		ft			
					ft			

FOOTAGE FROM	TO	ROCK TYPE	DESCRIPTION Colour, grain size, texture, minerals, alteration, etc.	PLANAR FEATURE ANGLE °	CORE SPECIMEN FOOTAGE ±	YOUR SAMPLE NUMBER	SAMPLE FOOTAGE		SAMPLE LENGTH	AU ASSAYS + %/t	
							FROM	TO			
0	17'	OVERBURDEN	(TRUE DEPTH OF OB - 12 FT.)								
17'	31.9'	MAFIC VOLCANIC (CHLORITIC) ALTERATION	DARK TO MEDIUM GREEN; SOFT; FINE GRAINED MAFIC VOLCANICS WITH VARIABLY SPACED FOLIATION PLANES @ 70° TO CORE AXIS - LOCAL NARROW AREAS WITH MINOR VARIOLES/AMYGDALS ELONGATED PARALLEL TO FOLIATION - SMALL SCALE FOLDING OF FOLIATION PLANES IS EVIDENT - ALTERATION IS DOMINANTLY CHLORITIC WITH LESSER ANKERITIC AND SERICITIC ALTERATION LOCALLY - MINOR CALCITE AS THIN, CLOSELY SPACED VEINLETS PARALLEL TO AS WELL AS DEFINING THE FOLIATION - TRACE DISSEMINATED PYRITE AS SMALL ANHEDRAL CRYSTALS @ 26.2 - 7mm → 1.0cm GREY QUARTZ VEINLET ASSOCIATED WITH A SERIES OF WHITE ANKERITE VEINS WITHIN A LOCALIZED ZONE OF SERICITE DOMINATED ALTERATION RUSTY & VUGGY CORE DUE TO GROUNDWATER LEACHING OF Fe-CARBONATE + PYRITE @ 21'; 26'; 30.1'; 31.9'	70°							
31.9'	46.7'	MAFIC VOLCANIC (CHLORITIC) ALTERATION	MEDIUM TO LIGHT GREEN; SOFT; MEDIUM GRAINED MAFIC VOLCANIC ROCK WITH WEAKER FOLIATION & PREDOMINANTLY CHLORITIC ALTERATION - 1% PYRITE AS UP TO 3mm CUBES + DISSEMINATED AS ABOVE @ 35.5' - ROTATED + SHEARED PYRITE CUBE WITH ORANGE ANKERITE PRESSURE SHADOWS 	65°		401 402	33.2 40.1	36.5 45.9	3.3 5.8	NIL NIL	
* NOTE: DIAGRAM NOT TO SCALE											

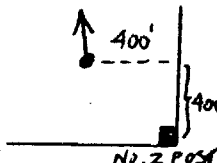


THE MINING ACT - MINISTRY OF NATURAL RESOURCES
DIAMOND DRILLING LOG

Start a new page for every new hole, but fill in top portion of form only on first page for each hole.

FILL IN ON EVERY PAGE

HOLE NO. MK-993-A PAGE NO. 2

DRILLING COMPANY SPARTA DRILLING-L. SALO		COLLAR ELEVATION	BEARING OF HOLE FROM TRUE NORTH N 20° W	TOTAL FOOTAGE 139.6 FT.	DIP OF HOLE AT COLLAR 1 3/16" φ - 45°	LOCATION OF HOLE IN RELATION TO A FIXED POINT ON THE CLAIM A 2. 340° 	MAP REFERENCE NO.	CLAIM NO. P-880304	
DATE HOLE STARTED MAY 30/93	DATE COMPLETED JUNE 3/93	DATE LOGGED JUNE 22/93	LOGGED BY T.K. O'CONNOR		ft		LOCATION (Tp., Lot, Con. OR Lot. and Long.) PRICE TWP.		
EXPLORATION CO., OWNER OR OPTIONEE MATTI KANGAS & JIM CROKALL		DATE SUBMITTED	SUBMITTED BY (Signature)		ft		PROPERTY NAME KANGAS-CROKALL PROPERTY		

FOOTAGE FROM	TO	ROCK TYPE	DESCRIPTION Colour, grain size, texture, minerals, alteration, etc.	PLANAR FEATURE ANGLE	CORE SPECIMEN FOOTAGE	YOUR SAMPLE NUMBER	SAMPLE FOOTAGE		SAMPLE LENGTH	AU ASSAYS + 02/T	
							FROM	TO			
31.9'	46.7'	(CONTINUED)	<p>@ ~39' → 41' ZONE OF FOLDED & FRACTURED MAFIC VOLCANIC ROCK WHERE CALCITE GASH VEINS ARE NOW PRESENT</p> <p>@ 44' → 45' PRESENCE OF PEACH COLOURED MICRO-PHENOCRYSTS WITH RHOMBIC CRYSTAL SHAPE (LEUCOXENE?) THAT ARE PREFERENTIALLY DISTRIBUTED PARALLEL TO FOLIATION</p>								
46.7'	54.4'	MAFIC VOLCANIC (CHLORITIC & SERICITIC) ALTERATION	<p>- CONTACT MARKS THE FIRST APPEARANCE OF BUFF GREY/BEIGE; HARDER; MAFIC VOLCANIC DOMINATED BY SERICITIC ALTERATION & MILD SILICIFICATION. THESE AREAS HAVE ASSOCIATED QUARTZ-CARBONATE-PYRITE STRINGER VEINLETS WITH LOCALLY UP TO 15% PYRITE</p> <p>- THE ABOVE ROCK ALTERNATES WITH LARGE AREAS OF SOFT; GREENISH GREY MAFIC VOLCANIC ROCK (AS BEFORE) WITH CHLORITIC & LESSER SERICITIC ALTERATION AND ~1% DISSEMINATED PYRITE.</p>			403	47.0	51.9	4.9		0.001
						404	51.9	56.8	4.9		0.001
			<p>@ 47.7' → 49.3' - ZONE OF SHEARED; BRECCIATED AND BOULDERIZED (SEGMENTED) ANKERITE VEINLETS WITH ANASTOMOSING SERICITE FOLIATIONS THAT ARE LOCALLY FOLDED. QUARTZ ENTERS THIS VEIN SYSTEM LATER AS MATRIX TO CARBONATE FRAGMENTS IN BRECCIATED VEINLETS</p>								
			<p>@ 52.7' → 53.3' AREA OF SHEARED CARBONATE + QZ VEINING WITH CHLORITIC-FUCHSITIC-SERICITIC CRACK-SEAL FEATURES</p>								
<p>* NOTE: THE ABUNDANCE & SIZE OF SERICITIC ALTERED SECTIONS OF CORE INCREASE DOWNHOLE; THE AMOUNT & INTENSITY OF "SHEARINGS" INCREASES DOWNHOLE</p>											



THE MINING ACT - MINISTRY OF NATURAL RESOURCES
DIAMOND DRILLING LOG

Start a new page for every new hole, but fill in top portion of form only on first page for each hole.

FILL IN ON EVERY PAGE

HOLE NO. MK-933-A PAGE NO.

DRILLING COMPANY SPARTA DRILLING - I. SALO		COLLAR ELEVATION	BEARING OF HOLE FROM TRUE NORTH N20°W	TOTAL FOOTAGE 139.6 FT	DIP OF HOLE AT COLLAR 136° collar -45°	LOCATION OF HOLE IN RELATION TO A FIXED POINT ON THE CLAIM	MAP REFERENCE NO.	CLAIM NO. P-880304
DATE HOLE STARTED MAY 30/93	DATE COMPLETED JUNE 3/93	DATE LOGGED JUNE 22/93	LOGGED BY T.K. O'CONNOR		ft		LOCATION (Tp., Lot, Con. OR Lot. and Long.) PRICE TWP.	
EXPLORATION CO., OWNER OR OPTIONEE M. KANGAS & J. CROXALL		DATE SUBMITTED	SUBMITTED BY (Signature)		ft		PROPERTY NAME KANGAS-CROXALL PROPERTY	
					ft			
					ft			

FOOTAGE FROM	TO	ROCK TYPE	DESCRIPTION Colour, grain size, texture, minerals, alteration, etc.	PLANAR FEATURE ANGLE	CORE SPECIMEN FOOTAGE	YOUR SAMPLE NUMBER	SAMPLE FOOTAGE		SAMPLE LENGTH	AU ASSAYS + OZ/T	
							FROM	TO			
54.4'	68.7'	MAFIC VOLCANIC (SERICITIC > CHLORITIC) ALTERATION	CONTACT REPRESENTS POINT WHERE HARDER BUFF GREY SERICITIC ALTERATION DOMINATES OVER MUCH LESS ABUNDANT CHLORITE ALTERED MAFIC VOLCANIC ROCKS -2-3% DISSEMINATED PYRITE ASSOCIATED WITH BUFF SERICITE ALTERED ROCK - PYRITE ALSO AS BLEB-LIKE CRYSTALS & CRYSTAL AGGREGATES DISTRIBUTED PREFERENTIALLY PARALLEL TO FOLIATION WHERE QUARTZ-CARBONATE VEINLETS & SHEARING ARE MOST INTENSE @ 54.4' → 55.8' - SMALL 1/2MM CRYSTALS OF MAGNETITE IN BUFF, SERICITE + QZ-RICH AREA * CORE IS BOTH MAGNETIC & REGISTERS INTENSE MAGNETIC SUSCEPTIBILITY READINGS UP TO 17000 SI UNITS (X10 ⁻⁵) ON METER			405	56.8	61.8	5.0		0.001
						406	61.8	67.0	5.2		NIL
						407	68.0	71.0	3.0		NIL
68.7'	139.6'	HIGHLY SHEARED (E.O.H.) MAFIC VOLCANIC (SERICITIC) ALTERATION	VERY LIGHT BUFF TO GREY TO GREEN SERICITE ALTERED INTERMEDIATE TO MAFIC VOLCANIC THAT IS EITHER HIGHLY SHEARED OR TUFFACEOUS FOLIATION IS AT 62° TO THE CORE AXIS - CONTACT @ 68.7' IS MARKED BY A 19CM QUARTZ > CARBONATE (ANKERITE) VEIN WITH SERICITIC CRACK-SEAL TEXTURES - IN/CONTACT IS @ 87° TO CORE AXIS - OUT/CONTACT IS @ 78-80° TO CORE AXIS - PROMINENTLY DISPLAYED TIGHT FOLDING OF THE SERICITE ALTERED ROCK & QUARTZ-ANKERITE VEINLETS REVEALS THAT THIS ROCK HAS BEEN SUBJECTED TO DUCTILE (PSEUDO-PLASTIC) DEFORMATION - THIS ROCK CONSISTS OF ALTERNATING BANDS OF: ① LIGHT SERICITIC ALTERATION ② THIN CHLORITIC ALTERATION ③ QUARTZ-ANKERITE-RICH AREAS WITH A FINELY LAMINATED/TIGHTLY SPACED FOLIATION	62°		408	77.0	80.5	3.5		NIL
						409	84.3	87.0	2.7		NIL
						410	87.0	90.2	3.2		NIL
						411	94.7	99.9	5.2		NIL
						412	99.9	105.1	5.2		NIL
						413	105.1	110.2	5.1		NIL
						414	110.2	115.4	5.2		NIL
						415	115.4	120.4	5.0		NIL
						416	120.4	125.4	5.0		NIL
						417	125.4	129.0	3.6		NIL
						418	129.0	132.0	3.0		NIL
						419	134.7	139.6	4.9		NIL



THE MINING ACT - MINISTRY OF NATURAL RESOURCES
DIAMOND DRILLING LOG

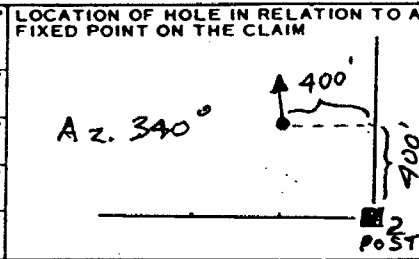
Start a new page for every new hole, but fill in top portion of form only on first page for each hole.

FILL IN ON EVERY PAGE

HOLE NO. MK-933-A PAGE NO.

CLAIM NO. P-880304

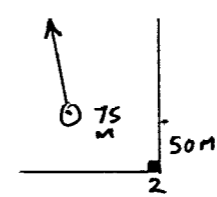
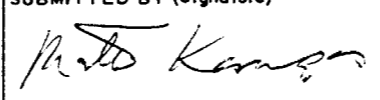
DRILLING COMPANY SPARTA DRILLING-L.SALO		COLLAR ELEVATION	BEARING OF HOLE FROM TRUE NORTH N 20° W	TOTAL FOOTAGE 139.6 FT.	DIP OF HOLE AT 1 3/16" φ collar -45°
DATE HOLE STARTED MAY 30/93	DATE COMPLETED JUNE 3/93	DATE LOGGED JUNE 22/93	LOGGED BY T.K. O'CONNOR		
EXPLORATION CO., OWNER OR OPTIONEE M. KANGAS & J. CROXALL		DATE SUBMITTED	SUBMITTED BY (Signature)		



MAP REFERENCE NO.	LOCATION (Tp., Lot, Con. OR Lat. and Long.) PRICE TWP
PROPERTY NAME KANGAS-CROXALL PROPERTY	

FOOTAGE FROM	TO	ROCK TYPE	DESCRIPTION Colour, grain size, texture, minerals, alteration, etc.	PLANAR FEATURE ANGLE	CORE SPECIMEN FOOTAGE +	YOUR SAMPLE NUMBER	SAMPLE FOOTAGE		SAMPLE LENGTH	AU ASSAYS + OZ/T	
							FROM	TO			
68.7'	139.6'	(CONTINUED)	@ 75.0' → 76.0' - 30 cm QUARTZ WITH MINOR ANKERITE VEIN THAT IS FRACTURED WITH SERICITE OCCUPYING THE FRACTURES		NOTE	401 → 419	33.2	139.6			
			@ 84.6' → 85.1' - GREY-WHITE QUARTZ VEIN WITH LOCALLY UP TO 30% BRECCIATED ANKERITE CRYSTALS								
			- SMALL SCALE "CHEVRON" FOLDING ABOUT/CONTACT WITH WALL ROCK S ₁ = FOLIATION = ~ 40° TO CORE AXIS								
			S ₂ = CLEAVAGE (AXIAL PLANAR) TO FOLDING = PERPENDICULAR TO THE FOLIATION FOLIATION S ₁								
			PYRITE INCREASES TO 5% DISSEMINATED CRYSTALS & AS THIN FOLDED BANDS PARALLEL TO FOLIATION S ₂								
			@ 91.7' - 2-4cm QUARTZ VEIN IN/CONTACT @ 70° TO CORE AXIS; OUT/CONTACT IS 120° TO CORE AXIS								
			QUARTZ								
			* FOLIATION WRAPS AROUND THE QUARTZ VEIN. THIS IMPLIES THAT S ₁ IS INDEED A TECTONIC FABRIC NOT PRIMARY TUFFACEOUS BEDDING.								
			@ 117' → 112' - WHITE QUARTZ VEIN WITH 5-10% ANKERITE CRYSTALS IN/CONTACT & OUT/CONTACT @ 77° TO CORE AXIS								
			@ 117.6' - THIN VEINLET OF QUARTZ STRINGER CHALCOPYRITE PARALLEL TO FOLIATION PLANES								
			@ 118.3' - 2mm x 4mm CHALCOPYRITE CRYSTAL								
			@ 123.1' - CHALCOPYRITE IN A LATE CROSS-CUTTING QUARTZ VEINLET 2mm WIDE - FOLIATION IS 85° TO CORE AXIS - VEINLET IS 58° TO CORE AXIS								
			@ 125.6' → MASSIVE STRINGER OF CHALCOPYRITE PARALLEL TO FOLIATION								
			@ 126.7' → CONCENTRATION OF CHALCOPYRITE ALONG A FOLDED FOLIATION PLANE								
			@ 128.9' → CONCENTRATION OF CHALCOPYRITE IN A QUARTZ-ANKERITE VEINLET								
			@ 130.1' → CHALCOPYRITE IN CROSS-CUTTING QUARTZ VEINLET								
			* END *								



DRILLING COMPANY SPARTA (L. SAUD) DRILLING		COLLAR ELEVATION	BEARING OF HOLE FROM TRUE NORTH N 20° W	TOTAL FOOTAGE 412 FT.	DIP OF HOLE AT COLLAR 1 3/16" collar - 45°	LOCATION OF HOLE IN RELATION TO A FIXED POINT ON THE CLAIM 	MAP REFERENCE NO.	CLAIM NO. P-880307	
DATE HOLE STARTED JUNE 6/93	DATE COMPLETED JUNE 10/93	DATE LOGGED JULY 3/93	LOGGED BY T.K. O'CONNOR		ft	A 2 340°	LOCATION (Tp., Lot, Con. OR Lat. and Long.) PRICE TWP.		
EXPLORATION CO., OWNER OR OPTIONEE MATTI KANGAS & JIM CROXALL		DATE SUBMITTED JULY 12/93	SUBMITTED BY (Signature) 		ft		PROPERTY NAME KANGAS-CROXALL PPRTY.		

FOOTAGE FROM	TO	ROCK TYPE	DESCRIPTION Colour, grain size, texture, minerals, alteration, etc.	PLANAR FEATURE ANGLE	CORE SPECIMEN FOOTAGE +	YOUR SAMPLE NUMBER	SAMPLE FOOTAGE		SAMPLE LENGTH	OZ/T	ASSAYS +	AU
							FROM	TO				
0	85'	OVERBURDEN	NO CORE									
85'	146.5'	ULTRAMAFIC KOMATIITIC FLOWS	MEDIUM TO COARSE GRAINED, VERY SOFT TO GREASY, RUSTED, ORANGE, UGGY TALC/CARBONATE ALTERED ULTRAMAFIC WITH SPINIFEX TEXTURES - PERIODIC "FRESHER" UNWEATHERED SECTIONS. - MODERATE ANKERITIC ALTERATION WITH RARE CALCITE ALTERATION AROUND CALCITE + CHLORITE +/- TOURMALINE VEINS SPINIFEX TEXTURES FINING DOWNHOLE = FLOW TOPS DOWNHOLE @ 101.3'; 102.2'; 102.9'; 103.6' → 105' @ 133.8' → BRECCIATED SPINIFEX FRAGMENTS WITH SERPENTINE MATRIX (FLOW TOP - BRECCIATED) 136.2' → 138.9' - SPINIFEX FINING DOWNHOLE			437	86.0	87.0	1.0'		NIL	
146.5	260.6'	ULTRAMAFIC KOMATIITIC FLOWS	"FRESH" / UNWEATHERED DARK GREENISH TO BLUE-BLACK TALC/CARBONATE ALTERED SPINIFEX TO MEDIUM-GRAINED ULTRAMAFIC WITH WHITE TO LIGHTER GREY VARIOLES @ 148.5' → 151' - CARB. VEIN WITH CHLORITE & GREEN SERPENTINE (SOAPSTONE) AT IN/CONTACT TO TALC/CARBONATE SPINIFEX FINING DOWNHOLE TO FINELY LAMINATED (OR LARGE SPINIFEX CRYSTAL ALIGNMENT) FLOW @ 25° TO CORE AXIS @ 157.2' → 158.6' - FRACTURE RUNNING PARALLEL TO THE CORE-AXIS INFILLED BY SHORT FIBRE ASBESTOS GROWN PERPENDICULAR TO FRACTURE			438 439 440 441	158.0 205.0 215.0 250.4	159.0 206.8 216.7 253.4	1.0' 1.5' 1.7' 3.0'		0.001 NIL NIL NIL	



Start a new page for every new hole, but fill in top portion of form only on first page for each hole.

FILL IN ON EVERY PAGE

HOLE NO. MK-931	PAGE NO. 2
CLAIM NO. P-880307	

DRILLING COMPANY SPARTA (L.SALO) DRILLING		COLLAR ELEVATION	BEARING OF HOLE FROM TRUE NORTH N20°W	TOTAL FOOTAGE 412	DIP OF HOLE AT COLLAR 13 1/16° collar -45
DATE HOLE STARTED JUNE 6/93	DATE COMPLETED JUNE 10/93	DATE LOGGED JULY 3/93	LOGGED BY T.K. O'CONNOR		
EXPLORATION CO., OWNER OR OPTIONEE		DATE SUBMITTED	SUBMITTED BY (Signature)		

LOCATION OF HOLE IN RELATION TO A FIXED POINT ON THE CLAIM

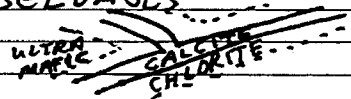
Az 340°

MAP REFERENCE NO.

LOCATION (Tp., Lot, Con. OR Lot. and Long.)
PRICE TWP.

PROPERTY NAME
CROYALL-KANGAS PRT

FOOTAGE FROM	TO	ROCK TYPE	DESCRIPTION Colour, grain size, texture, minerals, alteration, etc.	PLANAR FEATURE ANGLE *	CORE SPECIMEN FOOTAGE †	YOUR SAMPLE NUMBER	SAMPLE FOOTAGE		SAMPLE LENGTH	ASSAYS †		
							FROM	TO				
146.5	260.6	ULTRAMAFIC KOMATIITIC FLOWS (CONTINUED)	@158.8' → 159.7' - SPINIFEX FINING DOWNHOLE TO BRECCIATED FLOW TOP									
			@160.1' → 1.2 cm CARBONATE + CHLORITE VEIN @ 30° TO CORE AXIS									
			@165.2' → 1.3 cm CARBONATE + CHLORITE VEIN @ 35° TO CORE AXIS									
			@176.6' → 178' - SPINIFEX FINING DOWNHOLE WITH 5mm CALCITE VEIN @ OUT/CONTACT									
			@180' → CALCITE VEIN @ IN/CONTACT TO 20 cm MEDIUM GRAINED SPINIFEX SECTION									
			@185.2' → 190.8' - 10 cm CHLORITE BAND WITH THIN ANKERITE STRINGER AT IN/CONTACT TO MEDIUM GRAINED BRECCIATED "PILLOWED" UNIT WITH GRADED PILLOW SELVAGES									
			@190.8' → 193.3' - DOUBLY GRADED SPINIFEX SECTION WITH MEDIUM TO COARSE GRAINED SPINIFEX FINING DOWNHOLE									
			@193.3' → 194.4' - BRECCIATED FLOW TOP									
			@194.4' → 205.2' - MASSIVE MEDIUM GRAINED ULTRAMAFIC WHICH IS VARIOLITIC, PILLOWED & BRECCIATED IN PLACES									



* For features such as foliation, bedding, schistosity, measured from the long axis of the core.

† Additional credit available. See Assessment Work Regulations.

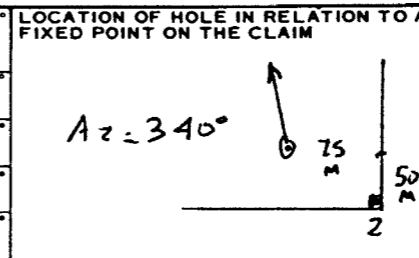


Start a new page for every new hole, but fill in top portion of form only on first page for each hole.

FILL IN ON EVERY PAGE

HOLE NO. M.K.-931	PAGE NO. 3
CLAIM NO. P-880307	

DRILLING COMPANY SPARTA (L.SALO) DRILLING		COLLAR ELEVATION	BEARING OF HOLE FROM TRUE NORTH N20°W	TOTAL FOOTAGE 412	DIP OF HOLE AT 13 1/16" collar -45°
DATE HOLE STARTED JUNE 6/93	DATE COMPLETED JUNE 10/93	DATE LOGGED JULY 3/93	LOGGED BY T.K. O'CONNOR		
EXPLORATION CO., OWNER OR OPTIONEE		DATE SUBMITTED	SUBMITTED BY (Signature)		



MAP REFERENCE NO.

LOCATION (Tp., Lot, Con. OR Lot. and Long.)
PRICE TWP.

PROPERTY NAME
KINGAS-CROXALL PPTY.

FOOTAGE FROM	TO	ROCK TYPE	DESCRIPTION Colour, grain size, texture, minerals, alteration, etc.	PLANAR FEATURE ANGLE	CORE SPECIMEN FOOTAGE +	YOUR SAMPLE NUMBER	SAMPLE FOOTAGE		SAMPLE LENGTH	ASSAYS +	
							FROM	TO			
146.5'	260.6'	ULTRAMAFIC KOMATIITIC FLOWS (CONT'D)	<p>@ 205.2' → 206.5' - FOLDED ANKERITE VEIN WITH MINOR CALCITE + 15% CHLORITE IN/CONTACT @ 30° CLAXIS & OUT/CONTACT @ 25° TO CORE AXIS (OPPOSITE SENSE)</p> <p> DOWNHOLE 25°</p> <p>@ 207.4' → 207.7' - 2 CIRCULAR AREAS (LARGEST 40.8cm) OF QUARTZ + PYRRHOTITE +/- CHALCOPHYRITE</p> <p>@ 208.3' → ACCUMULATION OF CREAMY PINKISH-BROWN COLOURED SULPHIDE THAT IS NON-MAGNETIC YET METALLIC (ALTERED PYRITE OR NICKEL SULPHIDE?) ALONG A CARBONATE +/- QUARTZ - FILLED FRACTURE</p> <p>@ 208.5' → 209.2' - SAME AS ABOVE WITHIN 15cm FRACTURED CARBONATE VEIN WITH RUSTY & VUGGY FRACTURE DUE TO GROUNDWATER INFILTRATION.</p> <p>@ 214.8' → 217' - 2.5cm VEIN OF CARBONATE + GREEN TOURMALINE + MINOR QUARTZ AT IN/CONTACT TO ULTRAMAFICS WITH 3-5% DISSEMINATED PYRITE</p> <p>@ 235.7' → 244' - SECTION OF DIFFERENT COLOURED ULTRAMAFIC; ALTERATION IS MORE DARK BROWNISH TO YELLOWISH GREEN (KHAKI) CHLORITE-DOMINANT. POSSIBLY DUE TO SLIGHT INCREASE IN SERICITE CONTENT OR COULD BE DUE TO AN OLD RUSTY DRILL ROD AFFECTING CORE COLOUR (THIS SECTION IS ~ 10 FEET OF CORE WITH IDENTICAL TEXTURES - JUST DIFFERENT COLOUR)</p>								

* For features such as foliation, bedding, schistosity, measured from the long axis of the core.

+ Additional credit available. See Assessment Work Regulations.

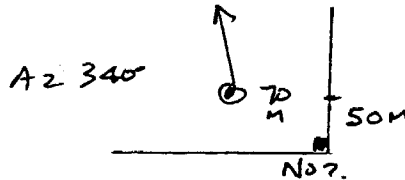


DRILLING COMPANY SPARTA (SALO) DRILLING		COLLAR ELEVATION	BEARING OF HOLE FROM TRUE NORTH N 20° W	TOTAL FOOTAGE 412'	DIP OF HOLE AT COLLAR 13 1/16 collar - 45°	LOCATION OF HOLE IN RELATION TO A FIXED POINT ON THE CLAIM	MAP REFERENCE NO.
DATE HOLE STARTED JUNE 6/93	DATE COMPLETED JUNE 10/93	DATE LOGGED JULY 3/97	LOGGED BY T.K. O'CONNOR		ft		LOCATION (Tp., Lot, Con. OR Lat. and Long.) PRICE TWP.
EXPLORATION CO., OWNER OR OPTIONEE		DATE SUBMITTED	SUBMITTED BY (Signature)		ft		PROPERTY NAME KANGAS-CROXALL PRPTY.
					ft		

FOOTAGE FROM	TO	ROCK TYPE	DESCRIPTION Colour, grain size, texture, minerals, alteration, etc.	PLANAR FEATURE ANGLE	CORE SPECIMEN FOOTAGE +	YOUR SAMPLE NUMBER	SAMPLE FOOTAGE		SAMPLE LENGTH	OZ/T ASSAYS + Au	
							FROM	TO			
260.6	359.2	SHEARED CARBONATIZED MAFC (ULTRAMAFC?) VOLCANIC	FINE GRAINED MEDIUM GREEN CHLORITIC BANDS WITH LIGHT GREY (CALCITE) BANDS THAT ARE OVERALL PLANAR, BUT HAVE BEEN SUBJECTED TO LARGE & SMALL SCALE (CHEVRON) FOLDING. * UP TO 30% PYRITE IN LOCALIZED SECTIONS CORRESPONDING TO AREAS OF SILICA INFLUX AS QUARTZ VEINS + VEINLETS AND GREATER SERICITIC ALTERATION - BANDING PROXIMAL TO THE IN/CONTACT IS FOLDED AND RUNS CRUDELY PARALLEL TO THE CORE AXIS @ 15° TO CORE AXIS	15°		442	265.6	270.0		NIL	
						443	270.0	275.0		0.001	
						444	275.0	280.0		NIL	
						445	280.0	285.0		NIL	
						446	285.0	290.0		NIL	
						447	290.0	295.0		NIL	
						448	295.0	300.0		NIL	
						449	300.0	305.0		NIL	
						450	305.0	310.0		NIL	
						451	310.0	315.0		NIL	
						452	315.0	319.2		NIL	
						453	319.2	324.2		NIL	
						454	324.2	330.0		NIL	
						455	330.0	335.0		NIL	
						456	338.1	341.6		NIL	
						457	341.6	345.0		NIL	
						458	349.5	354.2		NIL	
			@ 319.2 -> 324.4 - HARDER MORE SILICIFIED BROWNISH DYKE WITH LARGE 5-8mm PYRITE CUBES (10% OF CORE) & DISSEMINATED FINE GRAINED PYRITE (5%) * DYKE IS MICROPORPHYRITIC IN PLACES * IN/CONTACT & OUT/CONTACT OF DYKE ARE @ ~ 35° TO CORE AXIS								
			@ 324.4 -> 359.2 - ALTERNATING DARK GREEN & WHITE FINE GRAINED CHLORITE (+ MINOR SERICITE) ALTERED + CALCITE CARBONATE ALTERED HIGHLY SHEARED, FOLDED & FOLIATED MAFC VOLCANIC WITH A MORE PROMINENT FOLIATION ORIENTATION OF 50° TO CORE AXIS * FOLIATION DEFINED BY PINKISH WHITE CALCITE & WHITE QUARTZ VEINS WITH RED CRYSTALS + GREEN TOURMALINE + 3% DISSEMINATED PYRITE	50°							
			@ 349.7 - FUCHSITE ALTERED SECTION ASSOCIATED WITH 3 x 1cm PINK CALCITE + QUARTZ VEINS @ 50° TO CORE AXIS								

* For features such as foliation, bedding, schistosity, measured from the long axis of the core.



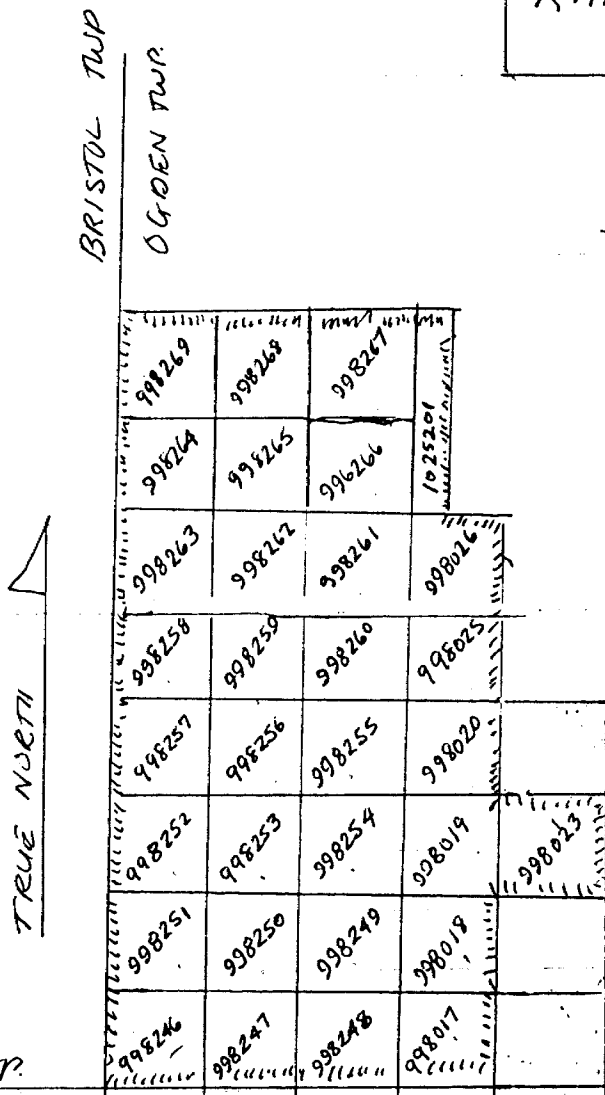
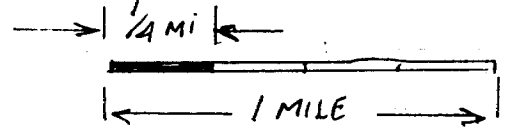
DRILLING COMPANY SPARTA (SALO) DRILLING		COLLAR ELEVATION	BEARING OF HOLE FROM TRUE NORTH N20°W	TOTAL FOOTAGE 412	DIP OF HOLE AT COLLAR 13 1/4° collar -45°	LOCATION OF HOLE IN RELATION TO A FIXED POINT ON THE CLAIM 	MAP REFERENCE NO.	LOCATION (Tp., Lot, Con. OR Lat. and Long.) PRICE TWP.	PROPERTY NAME ICANGAS-CRYSTALL PPTY.
DATE HOLE STARTED JUNE 6 / 93	DATE COMPLETED JUNE 10 / 93	DATE LOGGED JULY 3 / 93	LOGGED BY T.K. O'CONNOR		ft				
EXPLORATION CO., OWNER OR OPTIONEE		DATE SUBMITTED	SUBMITTED BY (Signature)		ft				
					ft				
					ft				
					ft				

FOOTAGE FROM TO	ROCK TYPE	DESCRIPTION Colour, grain size, texture, minerals, alteration, etc.	PLANAR FEATURE ANGLE	CORE SPECIMEN FOOTAGE +	YOUR SAMPLE NUMBER	SAMPLE FOOTAGE		SAMPLE LENGTH	OZ/T ASSAYS + Au	
						FROM	TO			
359.2	360.7	SYENITIC DYKE FOLIATED SYENITE DYKE WITH MAGNETITE STRINGERS & 5-10% DISSEMINATED PYRITE			459	358.1	362.0			NIL
360.7	361.2	HIGHLY SHEARED MAFIC VOLCANIC UP TO 80% CARBONATE + QUARTZ VEINS & 20-30% CHLORITE + FUCHSITE @ 58° TO CORE AXIS	58°							
361.2	368.1	QUARTZ AUGEN SCHIST HARD, SILICIFIED WELL FOLIATED QUARTZ AUGEN SCHIST WITH 5% DISSEMINATED & UP TO 3mm CUBES OF PYRITE * SECTIONS OF BUFF GREY TO BROWNISH HARD MASSIVE SILICIFIED ROCK WITH LATE QUARTZ + ANKERITE VEINS & 15-25% PYRITE.	65°		460 461	362.0 365.4	365.4 368.2			0.009 NIL
368.1	412.2	SHEARED MAFIC (E0H) VOLCANIC CHLORITIC & SERICITIC (WITH 5% FUCHSITE) ALTERED, SHEARED MAFIC VOLCANIC WITH UP TO 50% CARBONATE + QUARTZ STRINGERS @ 75° TO CORE AXIS (WITH MINOR ANKERITE)	75°		462 463 464 465 466 467 468	368.2 371.6 375.0 392.6 395.0 398.6 402.5	371.6 375.0 380.0 395.0 398.6 402.5 404.8			NIL 0.001 0.001 NIL NIL NIL NIL
		① @ 394.8' → 398.1' - VARIABLY SHEARED "FRESHER" QUARTZ/ALBITE PORPHYRY WITH UP TO 1cm QUARTZ PHENOCRYSTS								
		② @ 399' → 402.5' - VARIABLY SHEARED QUARTZ PORPHYRY RECRYSTALLIZED TO MASSIVE QUARTZ + LARGE (3x5mm) SERICITE CRYSTALS								
		③ @ 403.7' → 404.3' - SAME AS ①								

* For features such as foliation, bedding, schistosity, measured from the long axis of the core. + Additional credit available. See Assessment Work Regulations.

KANGAS-CROXALL PROPERTY
89 CLAIMS

SCALE: ONE INCH: 1/2 MILE

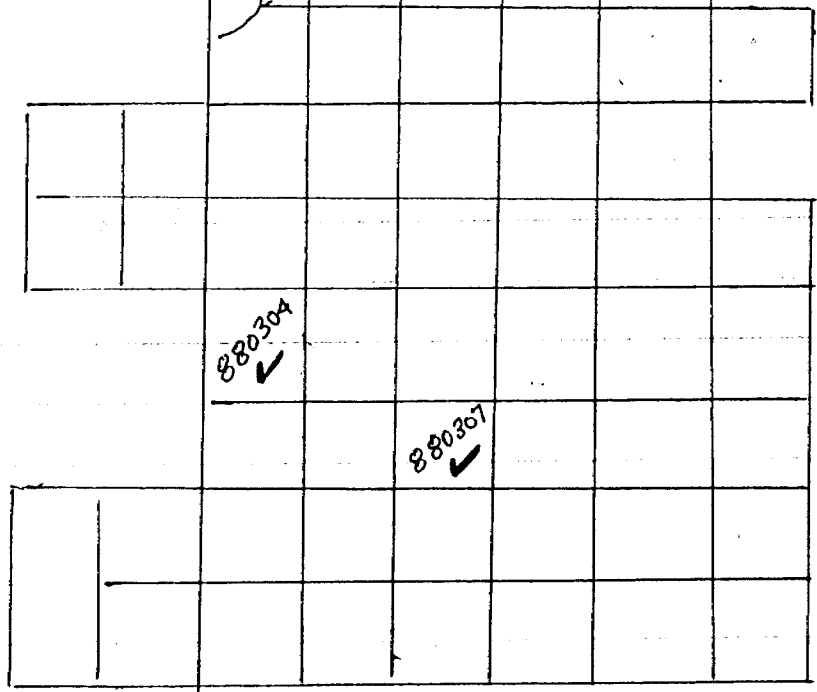


AREA WHERE
WORK APPLIED

CLAIM
WORKED

BRISTOL TWP.
THURNELOE TWP.

OGDEN TWP
PRICE TWP.



DIA. DRILLING EXPENDITURESPAYMENTS TO D.D. CONTRACTOR:

FOOTAGE CHARGES - 774 FT @ 12/FT = 9,288.⁰⁰[#]
 MOBE + DEMOBE - 2 @ 750 = 1,500.⁰⁰[#]

PAYMENTS TO ASSAY LAB:

67 SAMPLES ASSAYED for GOLD = 681.⁰⁶^{*}

TOTAL PAYMENTS TO OTHERS = 11,469.⁰⁶ (A)

CLAIM FOR FIELD SUPERVISION
OF DRILLING BY M. KANGAS

16 DAYS @ 100/DAY (CURRENT GOING RATE) = 1,600.⁰⁰ (B)

* CLAIM FOR ALL D.D. EXPENSES = 13,069.⁰⁶ (A+B)

FIELD DAY DATES:

MAY 26, 27, 28, 29, 30 (COMPLETE DRILLING OF HOLE

No. MK-933-B + 24 FT. OF HOLE

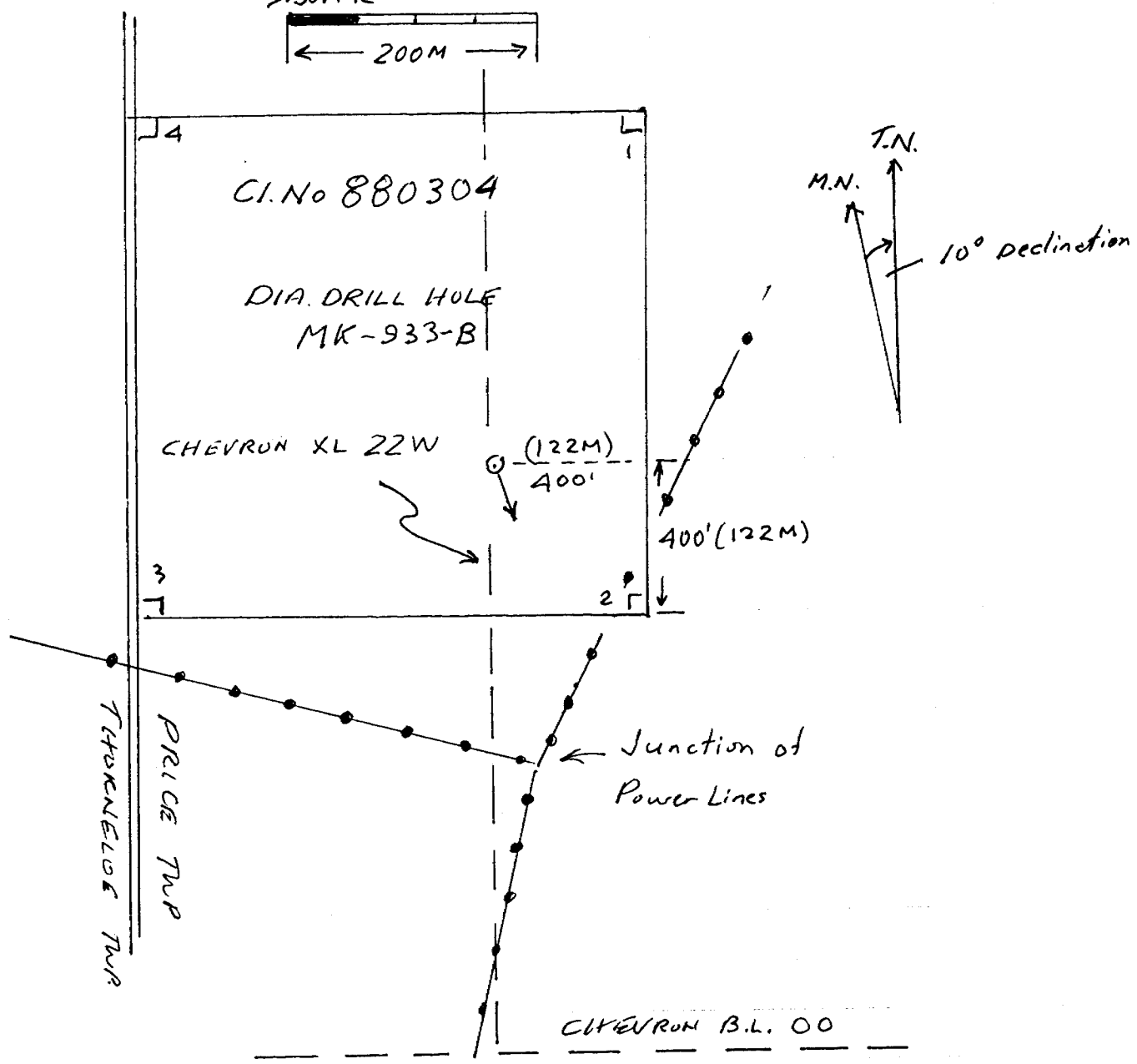
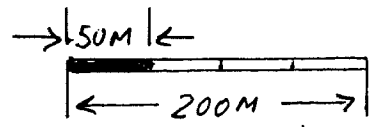
No. MK-933-A = 246 FT.)

JUNE 1, 2, 3, 4, 5, 6, 7, 8, 9, 10, 11 (FINISH MK-933A FROM 24 FT TO
140 FT. + 412 FT. IN MK-931)

16 DAYS @ 8 HR / DAY

DRILL HOLE PLAN MAP

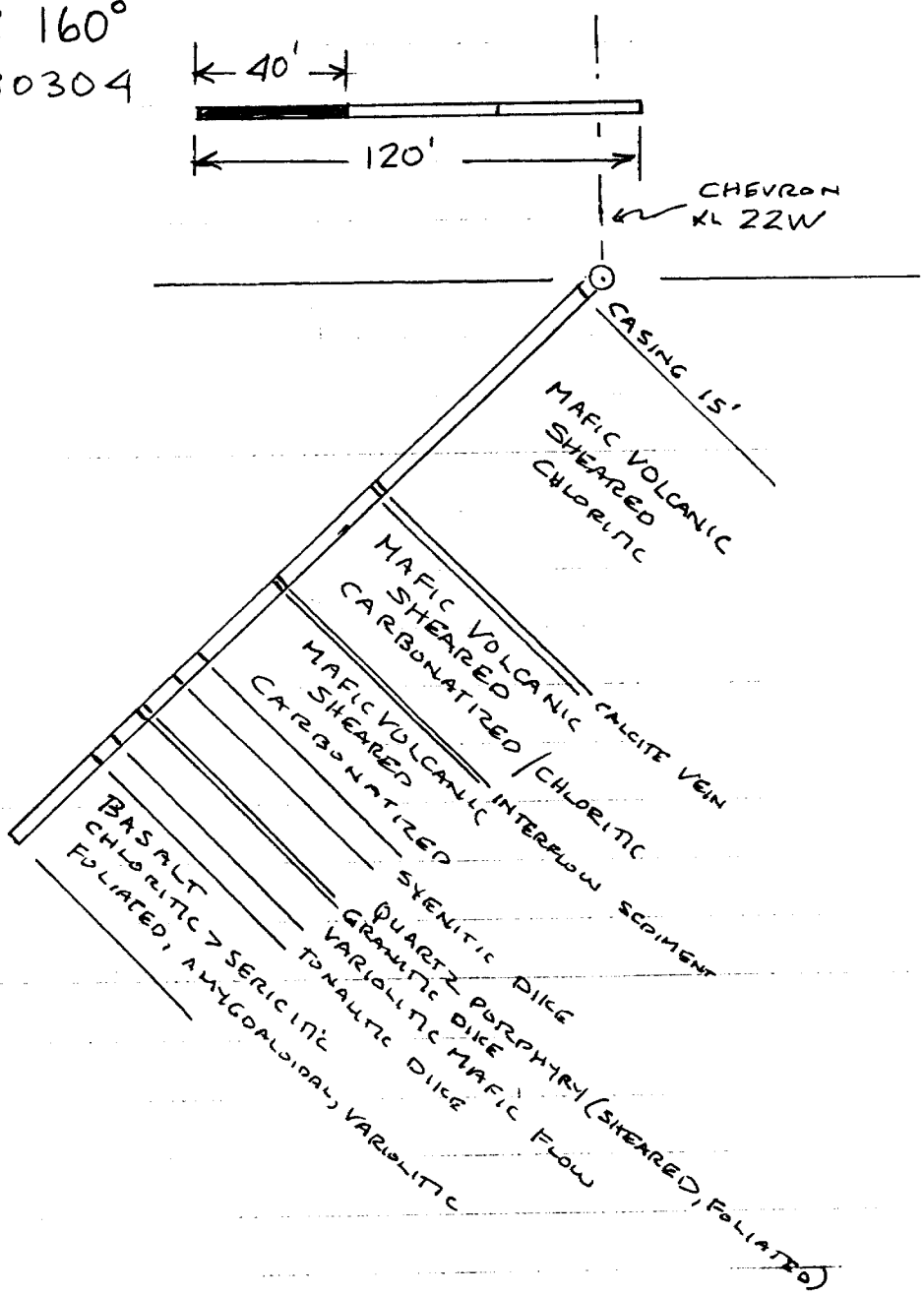
SCALE: 1CM = 50M



MK-933-B

LENGTH OF HOLE - 222 FT. (0' → 15' = OVERBURDEN)
 DIRECTION OF HOLE - S20°E (Az. 160°)
 DIP OF HOLE - -45°
 CORE φ - 1 3/16"

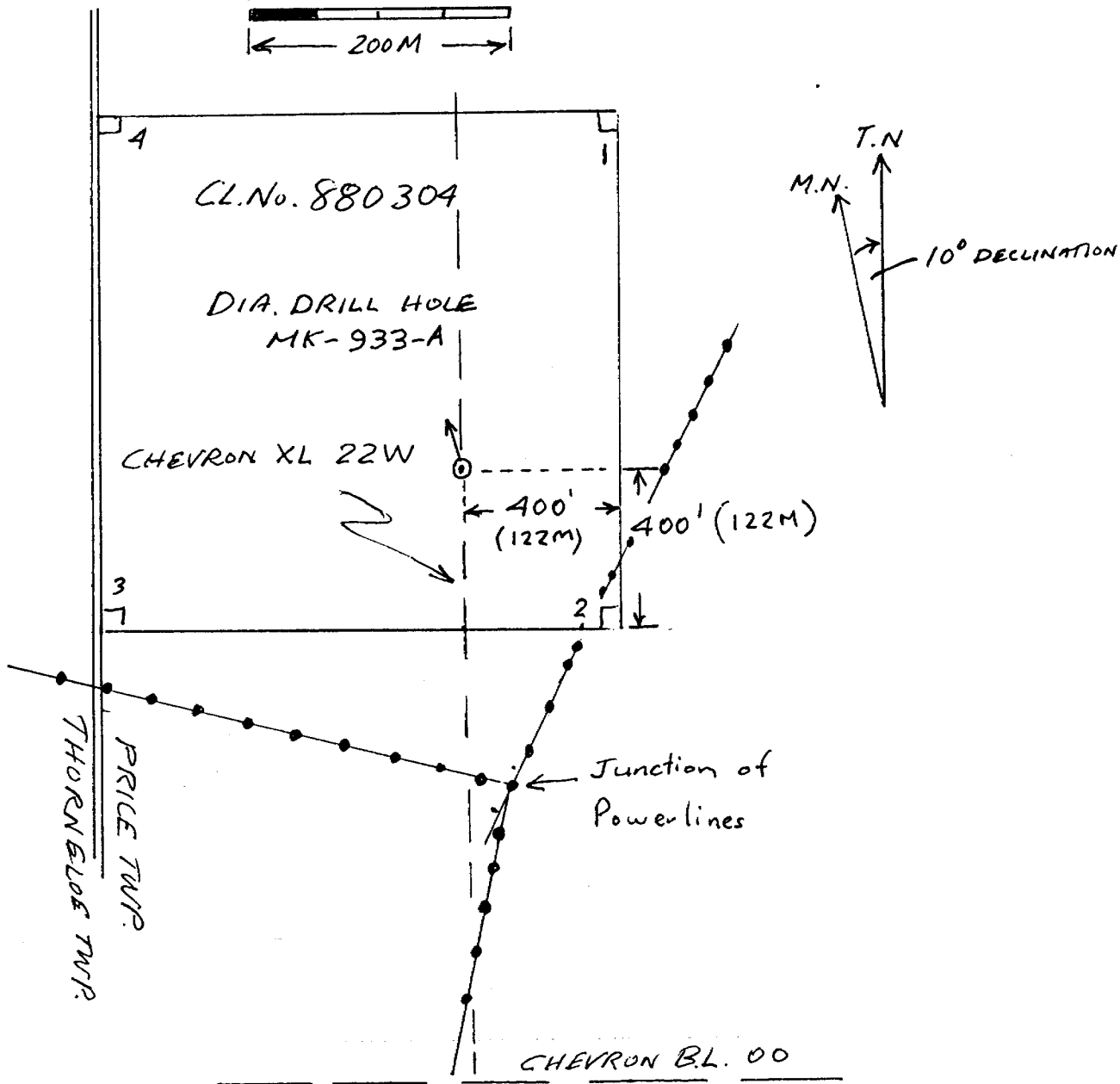
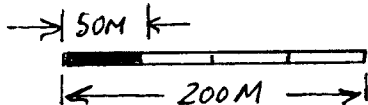
CROSS SECTION MK-933B FACING W20'S
DIP-45° AZ 160°
CLAIM No. P-880304



E.O.H. 220'

DRILL HOLE PLAN MAP

SCALE: 1CM = 50M



MK-933-A

LENGTH OF HOLE - 139.6 FT (0'-17" = OVERBURDEN)

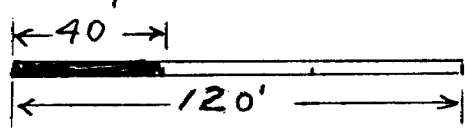
DIRECTION OF HOLE - N20°W (Az. 340°)

DIP OF HOLE - -45°

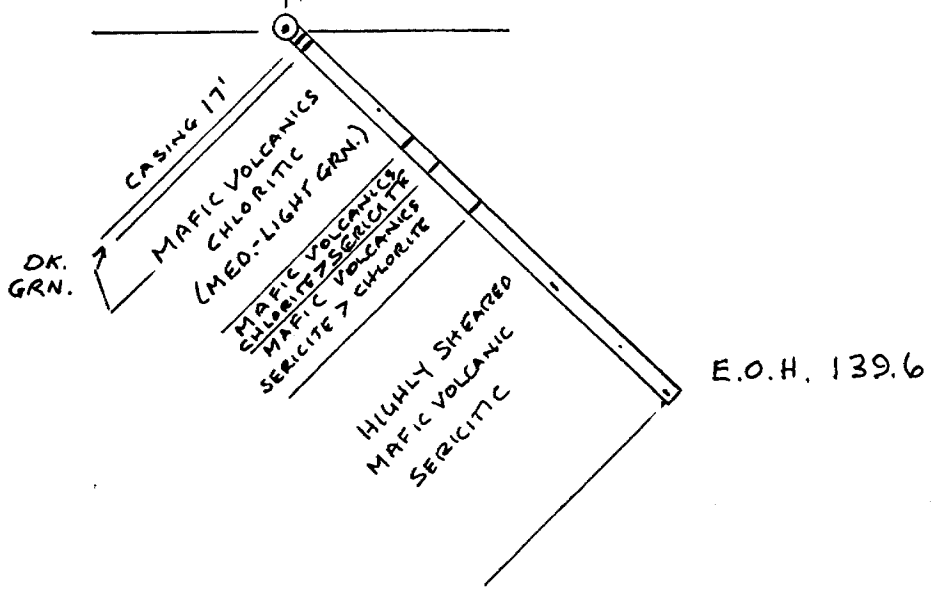
CORE ϕ - 1 ³/₁₆"

CROSS SECTION MK-933A FACING W.20°S. DIP -45° Az. 340°

CLAIM No. P-880304

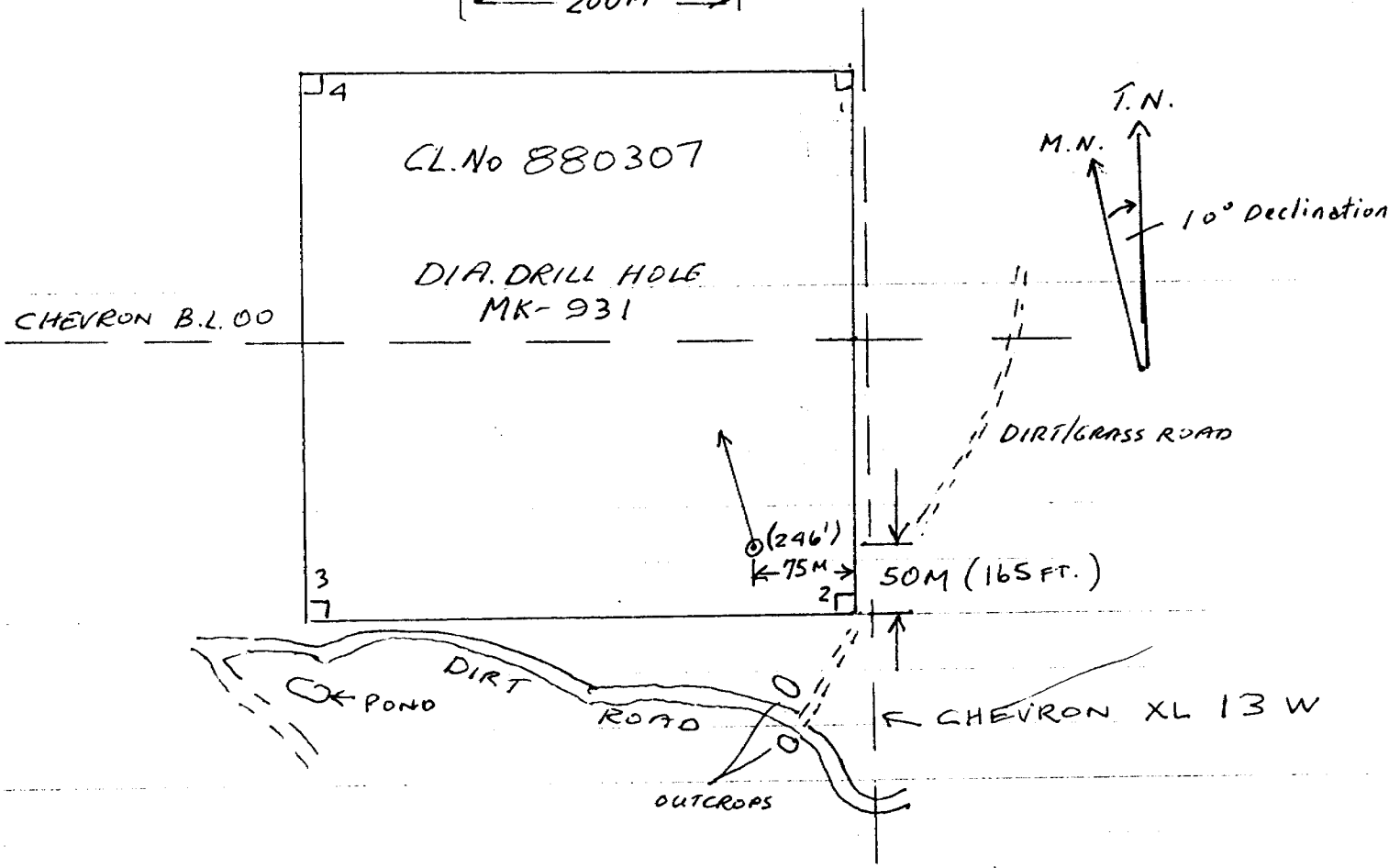
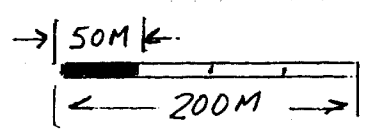


CHEVRON XL.22W



DRILL HOLE PLAN MAP

SCALE: 1CM = 50M



MK-931

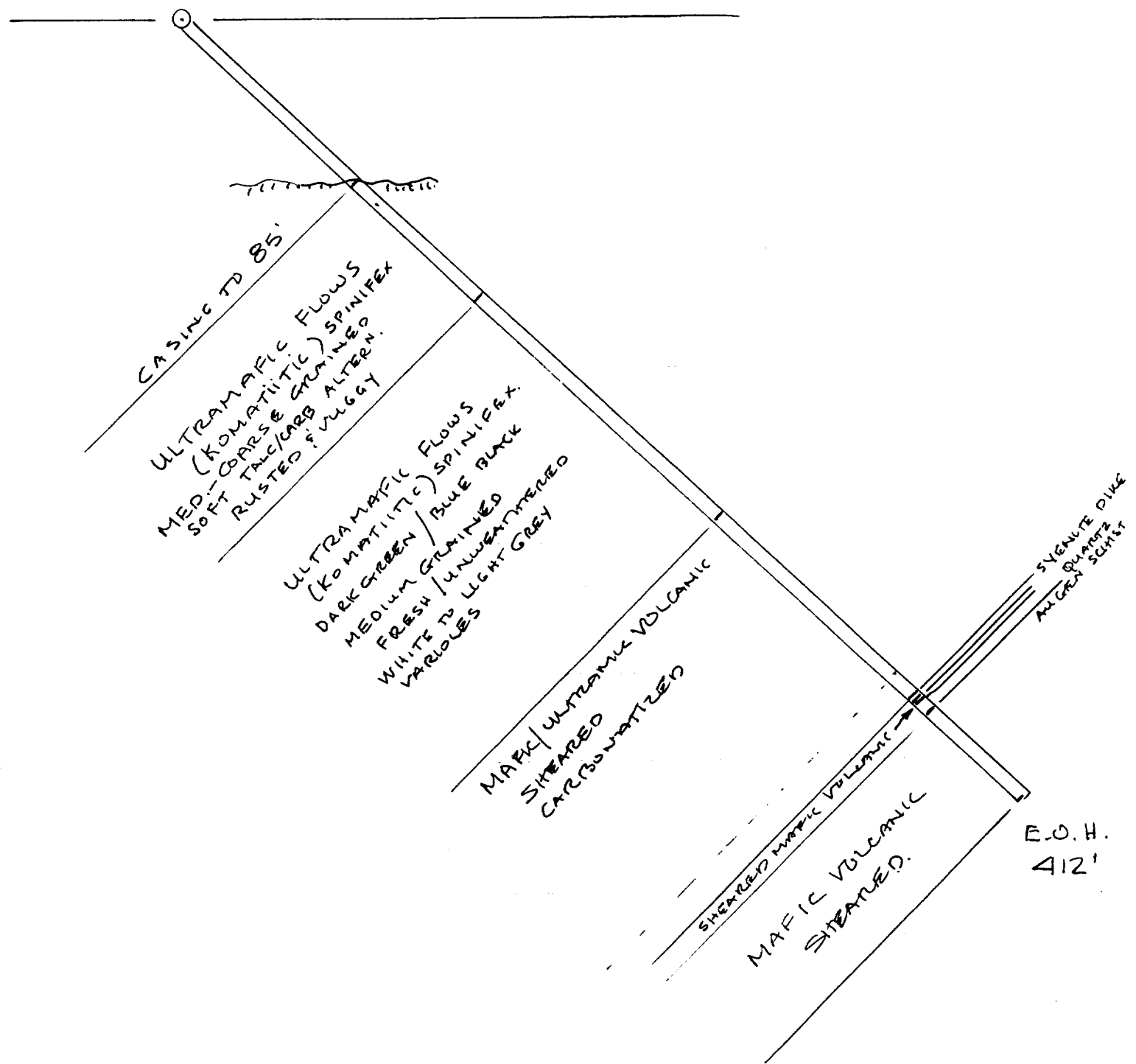
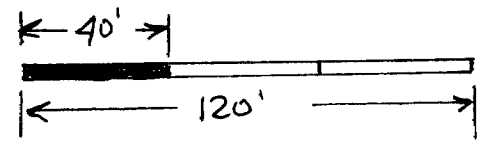
LENGTH OF HOLE - 412 FT (0'-85' = OVERBURDEN)

DIRECTION OF HOLE - N 20° W (Az-340°)

DIP OF HOLE - 45°

CORE ϕ - 1 3/16"

CROSS SECTION MK-931 FACING W20°S
DIP -45° A2 340°
CLAIM No. P-880307



SALO DRILLING
General Delivery,
Connaught, Ontario
PON-1AO (705) 363-2108
Larry and Joe-Anne Salo

MR. MATTI KANGAS
QUEEN STREET,
TIMMINS ONTARIO

STATEMENT OF ACCOUNT; with SALO DRILLING

INVOICE;	AMOUNT	CREDIT	BALANCE	DATE
93OP01	\$2,664.00		\$2,664.00	JUN 01 93
93OP02	\$1,680.00		\$4,344.00	JUN 02 93
PAYMENT		\$5,000.00	cr \$656.00	JUN 03 93
93OP03	\$4,944.00		\$4,288.00	JUN 10 93
PAYMENT (cash)		\$ 288.00	\$4,000.00	JUN 15 93
PAYMENT		\$4,000.00	0.00	JUN 28 93

YOUR ACCOUNT IS UP TO DATE. THANK YOU FOR THE WORK.

total footage 774 feet at \$12.00 per foot \$9,288.00 \$9,288.00 July 05 1993

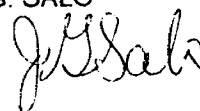
MOB and DE MOB for this project is billed through Salo Enterprises.

PAID IN FULL

PAID IN FULL

JUL 07 1993

J.G. SALO



SALO DRILLING
General Delivery,
Connaught, Ontario
PON-1AO (705)363-2108
Larry and Joe-Anne Salo

MATTI KANGAS
TIMMINS, ONTARIO

RE; PRICE TOWNSHIP

INVOICE; 93OP01

DRILL HOLE; *MK-933 B*

CORE SIZE; ADBGM (1.2in)
TOTAL DEPTH; 0-222 FEET
OVERBURDEN;
CASING;
CORE LOCATION; *delivered on site*
PRICE PER FOOT; \$12.00
CLIENT COST; \$2,664.00

ADVANCES; *nil*

BALANCE DUE; \$2,664.00

THANK YOU FOR CALLING US FOR YOUR WORK. IT HAS BEEN OUR PLEASURE!

J. Salo

SALO DRILLING
General Delivery,
Connaught, Ontario
PON-1AO (705)363-2108
Larry and Joe-Anne Salo

MATTI KANGAS
TIMMINS, ONTARIO

RE; PRICE TOWNSHIP DRILLING

INVOICE; 93OP02

DRILL HOLE; MK-933A

CORE SIZE; ADBGM (1.2in)
TOTAL DEPTH; 0-140 FEET
OVERBURDEN;
CASING;
CORE LOCATION; delivered on site
PRICE PER FOOT; \$12.00
CLIENT COST; \$1,680.00

ADVANCE; nil

BALANCE DUE; \$1,680.00

THANK YOU FOR CALLING US FOR YOUR WORK. IT HAS BEEN OUR PLEASURE !

J. Salo

SALO DRILLING
General Delivery,
Connaught, Ontario
PON-1AO (705) 363-2108

MATTI KANGAS
TIMMINS ONTARIO

RE; PRICE TOWNSHIP DRILLING

INVOICE; 93OP03

DRILL HOLE, MK-931

CORE SIZE; ADBGM (1.2in)

TOTAL DEPTH; 0-412 FEET

OVERBURDEN;

CASING;

CORE LOCATION; *delivered on site*

PRICE PER FOOT; \$12.00

CLIENT COST; \$4,944.00

ADVANCE; *nil*

BALANCE DUE; \$4,944.00

THANK YOU FOR CALLING US FOR YOUR WORK. IT HAS BEEN OUR PLEASURE!



SALO ENTERPRISES
BOX 21, 8 CEDAR STREET SOUTH
TIMMINS, ONTARIO
P4G-2G4

MR MATTI KANGAS
QUEEN STREET,
TIMMINS, ONTARIO

RE; MOBILIZATION OF SALO DRILLING

POINT OF ENTRY; *Finn Road, Connaught*

EQUIPMENT FOR PICK UP; 1- *Diamond Drill*
1- *Sloup of supplies*
1- *International Bulldozer*

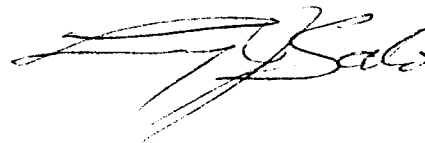
POINT OF LANDING; *Transmission line in Price Township*

TIME;

RATE; *Flat rate as quoted* \$750.00

AMOUNT DUE; \$750.00

PAID
JUL 07 1993

A handwritten signature in black ink, appearing to read 'F. Salo', is written over the stamp.

SALO ENTERPRISES
BOX 21, 8 CEDAR STREET SOUTH
TIMMINS, ONTARIO
P4G-2G4

TO;MR. MATTI KANGAS
QUEEN STREET,
TIMMINS, ONTARIO

RE; DEMOBILIZATION OF SALO DRILLING

POINT OF ENTRY;PRICE TOWNSHIP ACCESS ROAD

EQUIPMENT FOR PICK-UP;1-Diamond Drill
1-Shop of supplies
1-International Bulldozer

POINT OF LANDING;Jowsey Lake Road, second "Y"

TIME;

RATE;Flat rate as quoted \$750.00

AMOUNT DUE; \$750.00

PAID
JUL 07 1993

A handwritten signature in black ink, appearing to be 'M. Kangas', written over the 'PAID' stamp.



Established 1928

Swastika Laboratories

A Division of TSL/Assayers Inc.

Assaying - Consulting - Representation

Page 1 of 3

3W-1852-RA1

Assay Certificate

Company: **MATTI KANGAS**

Project:

Attn: J Croxall

Date: JUN-24-93

We hereby certify the following Assay of 67 SAWN CORE samples submitted JUN-21-93 by J Croxall.

Sample Number	Au g/tonne	Au oz/ton	Au Ck g/tonne	Au Ck oz/ton
401	NIL			
402	NIL			
403	0.01	.001		
404	0.02	.001	0.01	.001
405	0.01	.001		
406	NIL			
407	NIL			
408	NIL			
409	NIL			
410	NIL			
411	NIL			
412	NIL			
413	NIL			
414	NIL			
415	NIL			
416	NIL			
417	NIL			
418	NIL			
419	NIL			
420	0.02	.001		
421	0.02	.001		
422	0.22	.006	0.21	.006
423	NIL			
424	NIL			
425	NIL			
426	NIL			
427 NOT RECEIVED				
428	0.01	.001	0.01	.001
429	NIL			
430	NIL			

Certified by Denis Chantre



Swastika Laboratories

A Division of TSL/Assayers Inc.

Assaying - Consulting - Representation

Established 1928

Page 2 of 3

Assay Certificate

3W-1852-RA1

Date: JUN-24-93

Company: **MATTI KANGAS**

Project:

Attn: **J Croxall**

We hereby certify the following Assay of 67 SAWN CORE samples submitted JUN-21-93 by J Croxall.

Sample Number	Au g/tonne	Au oz/ton	Au Ck g/tonne	Au Ck oz/ton
431	0.01	.001		
432	0.01	.001	0.02	.001
433	NIL			
434	0.01	.001		
435	0.02	.001		
436	NIL			
437	NIL			
438	0.01	.001		
439	NIL			
440	NIL			
441	NIL			
442	NIL			
443	0.01	.001		
444	NIL			
445	NIL			
446	NIL			
447	NIL		NIL	
448	NIL			
449	NIL			
450	NIL			
451	NIL			
452	NIL			
453	NIL			
454	NIL			
455	NIL			
456	NIL			
457	NIL			
458	NIL			
459	NIL			
460	0.31	.009	0.32	.009

Certified by *Dennis Chante*



Established 1928

Swastika Laboratories

A Division of TSL/Assayers Inc.

Assaying - Consulting - Representation

Page 3 of 3

3W-1852-RA1

Date: JUN-24-93

Assay Certificate

Company: **MATTI KANGAS**

Project:

Attn: **J Croxall**

We hereby certify the following Assay of 67 SAWN CORE samples submitted JUN-21-93 by J Croxall.

Sample Number	Au		Au Ck	
	g/tonne	oz/ton	g/tonne	oz/ton
461	NIL			
462	NIL			
463	0.01	.001		
464	0.02	.001		
465	NIL			
466	NIL			
467	NIL		NIL	
468	NIL			

Certified by Denis Chantre

Swastika Laboratories
P.O. Box 10
Swastika, Ontario
P0K 1T0

INVOICE

NO:

DATE: 28360

PAGE: 06-25-83

1 of 1

SOLD TO:

SHIP TO:

Matti Kangas
128 Queen Avenue
Timmins, Ontario
P4N 4L6

Same

ITEM NO.	QUANTITY	UNIT	DESCRIPTION	G	P	UNIT PRICE	AMOUNT
	87		Au Assays Cert. #3W-1852-RA1 3-GST @ 7 %				636.50
							44.56
						TOTAL	681.06

Net 30 Days

SWASTIKA LABORATORIES
JUL 18 PAID
NEW YORK BANK

Report of Work Conducted After Recording Claim Mining Act

Transaction Number W9360-00141

ASS'T FILES

Personal information collected on this form is obtained under the authority of the Mining Act. This information will be used for correspondence. Questions about this collection should be directed to the Provincial Manager, Mining Lands, Ministry of Northern Development and Mines, Fourth Floor, 159 Cedar Street, Sudbury, Ontario, P3E 6A5, telephone (705) 670-7264.

- Please type or print and submit in duplicate.
- Refer to the Mining Act and Regulations for Recorder.
- A separate copy of this form must be complete.
- Technical reports and maps must accompany.
- A sketch, showing the claims the work is as



900

Recorded Holder(s) MATTI KANGAS	Client No. 150666 M-20585
Address 128 QUEEN AVE., TIMMINS, ONT., P4N4L6	Telephone No. (705)-267-6175
Mining Division PORCUPINE	Township/Area PRICE / OGDEN
Dates Work Performed From: MAY 26/93 To: JUNE 11/93	

Work Performed (Check One Work Group Only)

Work Group	Type
<input type="checkbox"/> Geotechnical Survey	
<input checked="" type="checkbox"/> Physical Work, Including Drilling	EXPLORATORY DIAMOND DRILLING
<input type="checkbox"/> Rehabilitation	
<input type="checkbox"/> Other Authorized Work	
<input type="checkbox"/> Assays	
<input type="checkbox"/> Assignment from Reserve	

ONTARIO GEOLOGICAL SURVEY
GIS - ASSESSMENT FILES
DEC XX 1993
RECEIVED

Total Assessment Work Claimed on the Attached Statement of Costs \$ **13,069.00**

Note: The Minister may reject for assessment work credit all or part of the assessment work submitted if the recorded holder cannot verify expenditures claimed in the statement of costs within 30 days of a request for verification.

Persons and Survey Company Who Performed the Work (Give Name and Address of Author of Report)

Name	Address
L. SAW DRILLING (SPARTA)	GENERAL DELIVERY, CONNAUGHT, ONT., P0N1A0
M. KANGAS (DRILL SUPERVISION)	128 QUEEN AVE, TIMMINS, ONT., P4N4L6
T.K. O'CONNOR (CORE LOGGING)	M.N.D.M.

RECORDED
JUL 20 1993
Receipt

(attach a schedule if necessary)

Certification of Beneficial Interest * See Note No. 1 on reverse side

I certify that at the time the work was performed, the claims covered in this work report were recorded in the current holder's name or held under a beneficial interest by the current recorded holder.	Date	Recorded Holder or Agent (Signature)
--	------	--------------------------------------

Certification of Work Report

I certify that I have a personal knowledge of the facts set forth in this Work report, having performed the work or witnessed same during and/or after its completion and annexed report is true.		
Name and Address of Person Certifying MATTI KANGAS, 128 QUEEN AVE., TIMMINS, ONT., P4N4L6		
Telephone No. (705)-267-6175	Date JULY 12/93	Certified By (Signature) Matti Kangas

For Office Use Only

Total Value Cr. Recorded \$13,069	Date Recorded JULY 20, 1993	Mining Recorder [Signature]	RECEIVED JUL 20 1993 9:50 (C) [Signature]
	Deemed Approval Date OCT. 18, 1993	Date Approved AUG. 17, 1993	
	Date Notice for Amendments Sent JULY 26, 1993 - REC'D AUG. 13/93		

Statement of Costs
for Assessment Credit

État des coûts aux fins
du crédit d'évaluation

Transaction No./N° de transaction
W9360.00141

Mining Act/Loi sur les mines

Personal information collected on this form is obtained under the authority of the Mining Act. This information will be used to maintain a record and ongoing status of the mining claim(s). Questions about this collection should be directed to the Provincial Manager, Minings Lands, Ministry of Northern Development and Mines, 4th Floor, 159 Cedar Street, Sudbury, Ontario P3E 6A5, telephone (705) 670-7264.

Les renseignements personnels contenus dans la présente formule sont recueillis en vertu de la Loi sur les mines et serviront à tenir à jour un registre des concessions minières. Adresser toute question sur la collecte de ces renseignements au chef provincial des terrains miniers, ministère du Développement du Nord et des Mines, 159, rue Cedar, 4^e étage, Sudbury (Ontario) P3E 6A5, téléphone (705) 670-7264.

1. Direct Costs/Coûts directs

Type	Description	Amount Montant	Totals Total global
Wages Salaires	Labour Main-d'oeuvre		
	Field Supervision Supervision sur le terrain	\$ 1,600	1,600
Contractor's and Consultant's Fees Droits de l'entrepreneur et de l'expert- conseil	Type D.D. CONTRACTOR		
	774 FT @ 12/FT	\$ 9,288	
	ASSAY LAB	\$ 681. ⁰⁰	9,969. ⁰⁰
Supplies Used Fournitures utilisées	Type		
Equipment Rental Location de matériel	Type		
Total Direct Costs Total des coûts directs		\$ 11,569. ⁰⁰	

2. Indirect Costs/Coûts indirects

** Note: When claiming Rehabilitation work Indirect costs are not allowable as assessment work.
Pour le remboursement des travaux de réhabilitation, les coûts indirects ne sont pas admissibles en tant que travaux d'évaluation.

Type	Description	Amount Montant	Totals Total global
Transportation Transport	Type		
Food and Lodging Nourriture et hébergement			
Mobilization and Demobilization Mobilisation et démobilisation	D.D. MOBE/DEMUBE \$ 750 @	1,500	1,500
Sub Total of Indirect Costs Total partiel des coûts indirects			1,500
Amount Allowable (not greater than 20% of Direct Costs) Montant admissible (n'excédant pas 20 % des coûts directs)			1,500
Total Value of Assessment Credit (Total of Direct and Allowable Indirect costs)		Valeur totale du crédit d'évaluation (Total des coûts directs et indirects admissibles)	\$ 13,069. ⁰⁰

Note: The recorded holder will be required to verify expenditures claimed in this statement of costs within 30 days of a request for verification. If verification is not made, the Minister may reject for assessment work all or part of the assessment work submitted.

Note: Le titulaire enregistré sera tenu de vérifier les dépenses demandées dans le présent état des coûts dans les 30 jours suivant une demande à cet effet. Si la vérification n'est pas effectuée, le ministre peut rejeter tout ou une partie des travaux d'évaluation présentés.

Filing Discounts

- Work filed within two years of completion is claimed at 100% of the above Total Value of Assessment Credit.
- Work filed three, four or five years after completion is claimed at 50% of the above Total Value of Assessment Credit. See calculations below:

Total Value of Assessment Credit	Total Assessment Claimed
	x 0.50 =

Remises pour dépôt

- Les travaux déposés dans les deux ans suivant leur achèvement sont remboursés à 100 % de la valeur totale susmentionnée du crédit d'évaluation.
- Les travaux déposés trois, quatre ou cinq ans après leur achèvement sont remboursés à 50 % de la valeur totale du crédit d'évaluation susmentionné. Voir les calculs ci-dessous.

Valeur totale du crédit d'évaluation	Évaluation totale demandée
	x 0,50 =

Certification Verifying Statement of Costs

I hereby certify:
that the amounts shown are as accurate as possible and these costs were incurred while conducting assessment work on the lands shown on the accompanying Report of Work form.

that as RECORDED HOLDER I am authorized
(Recorded Holder, Agent, Position in Company)

to make this certification

Attestation de l'état des coûts

J'atteste par la présente :
que les montants indiqués sont le plus exact possible et que ces dépenses ont été engagées pour effectuer les travaux d'évaluation sur les terrains indiqués dans la formule de rapport de travail ci-joint.

Et qu'à titre de _____ je suis autorisé
(titulaire enregistré, représentant, poste occupé dans la compagnie)

à faire cette attestation.

Signature Matthew Lang Date JULY 12/93

152 BROCK AVE.,
TIMMINS, ONT. P4N7P1
AUG. 8, 1993

Gary R. White
Mining Recorder,
Porcupine Mining Division
60 Wilson Avenue
Timmins, Ontario, P4N2S7

Dear Gary,

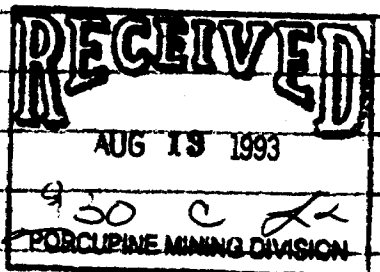
This letter is in response to your July 26/93 letter to Matti Kangas concerning reports of work 9360.00141 & 9360.00142.

- 1) WR 9360.00142 - I hereby confirm that MATTI KANGAS had a 50% interest in claims numbered P-1159644 and P-1159645 at the time the mechanical overburden stripping was performed on claims P-871796 and 871797
- 2) WR 9360.00141 - Matti and I have decided that the unassigned \$269.00 of work completed by diamond drilling on claims P-880309 and P-880307 be assigned to claim no. P-998246

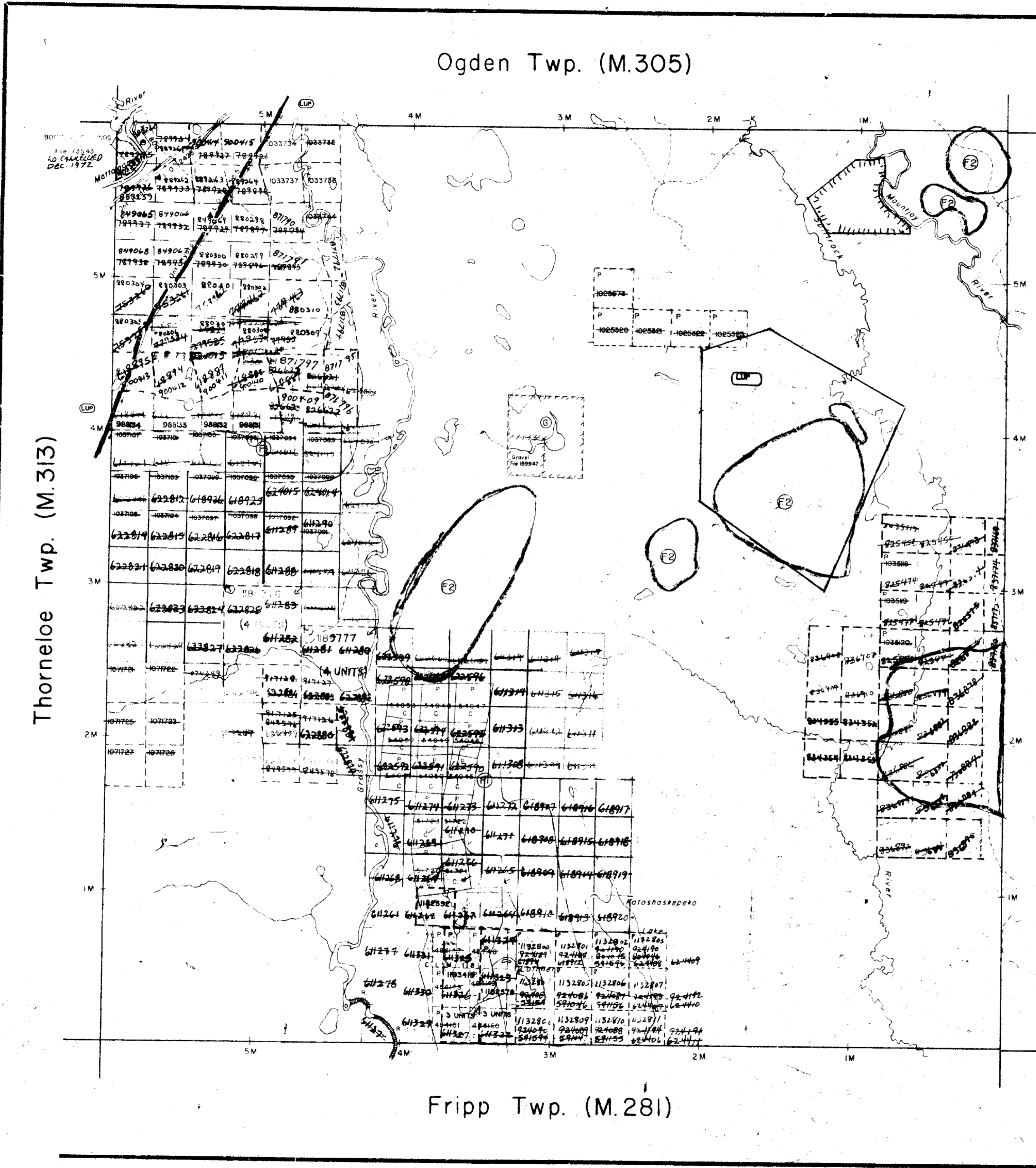
Sincerely,

J. E. Curran
and

Matti Kangas



Ogden Twp. (M.305)



Fripp Twp. (M.281)

THE TOWNSHIP OF

PRICE

DISTRICT OF COCHRANE

PORCUPINE AUG 17 1993
MINING DIVISION

SCALE: 1-INCH = 40-CHAINS

DISPOSITION OF CROWN LANDS

- PATENT, SURFACE AND MINING RIGHTS ●
 - " SURFACE RIGHTS ONLY ○
 - " MINING RIGHTS ONLY ◐
 - LEASE, SURFACE AND MINING RIGHTS ■
 - " SURFACE RIGHTS ONLY ◑
 - " MINING RIGHTS ONLY ◒
 - LICENCE OF OCCUPATION ▼
- ROADS
- IMPROVED ROADS [Symbol]
 - KING'S HIGHWAYS [Symbol]
 - RAILWAYS [Symbol]
 - POWER LINES [Symbol]
 - MARSH OR MUSKEG [Symbol]
 - MINES [Symbol]
 - CANCELLED [Symbol]

NOTES

400' surface rights reservation along the shores of all lakes and rivers.

Areas withdrawn from staking under Section 43 of the Mining Act (R.S.O. 1970).

Order No	File	Date	Disposition
(LUP)			APPLICATION PENDING UNDER PUBLIC LANDS ACT NOTICE RECEIVED 83-MAR-30 (SNOWMOBILE TRAIL)
(LUP)			APPLICATION PENDING UNDER PUBLIC LANDS ACT NOTICE RECEIVED 93-JUN-23 (WASTE DISPOSAL SITE)

② THIS TWP. SUBJECT TO FOREST ACTIVITY IN 1993/94 FURTHER INFORMATION AVAILABLE ON FILE.

SAND AND GRAVEL

⑥ QUARRY PERMIT

Rec. Oct 3/79

This township lies within the Municipality of the CITY of TIMMINS.

PLAN NO. M-307

ONTARIO
MINISTRY OF NATURAL RESOURCES
SURVEYS AND MAPPING BRANCH

THE INFORMATION THAT APPEARS ON THIS MAP HAS BEEN COMPILED FROM VARIOUS SOURCES AND ACCURACY IS NOT GUARANTEED. THOSE WISHING TO STAKE MINING CLAIMS SHOULD CONSULT WITH THE MINING RECORDER, MINISTRY OF NORTHERN DEVELOPMENT AND MINES, FOR ADDITIONAL INFORMATION ON THE STATUS OF THE LANDS SHOWN HEREON.



REFERENCES

AREAS WITHDRAWN FROM DISPOSITION

- M.R.O. - MINING RIGHTS ONLY
- S.R.O. - SURFACE RIGHTS ONLY
- M.+S. MINING AND SURFACE RIGHTS

Description	Order No.	Date	Disposition	File
(R) SFC 43170		17/5/72	S.R.O.	164584

SAND AND GRAVEL

(G1)	GRAVEL	FILE 143834
(G2)	M.N.R. GRAVEL RESERVE	
(G3)	M.N.R. GRAVEL PIT 258	FILE 11467

NOTES

Reservation for Deputy Chief Ranger's Headquarters site shown thus File: 110657

Flooding Rights on Kenogamissi Lk. & Mattagami R. are reserved to Ont. Hydro - L.O. 7598. File: 1163 vol. 3

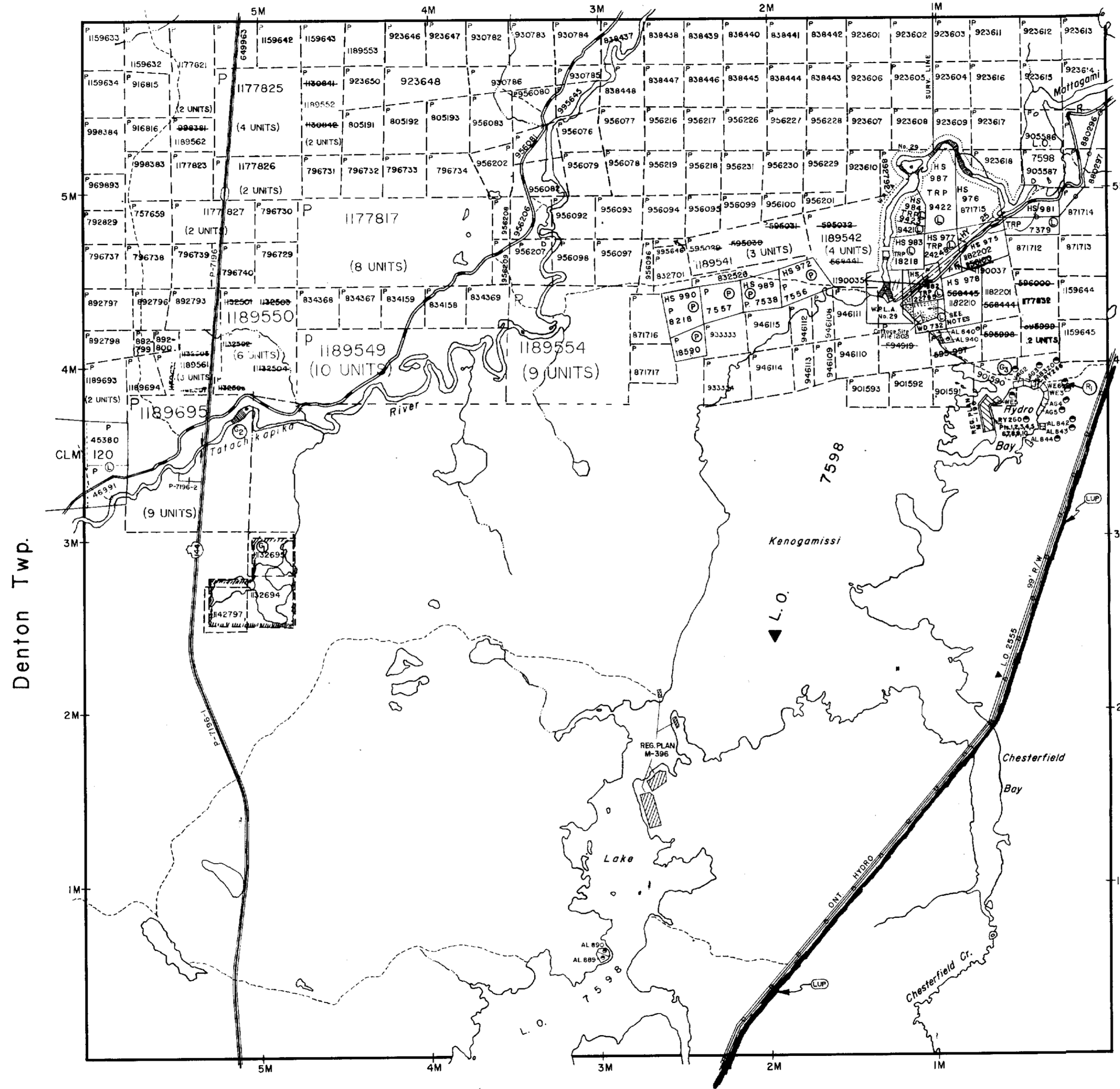
THIS TOWNSHIP LIES WITHIN THE MUNICIPALITY OF THE CITY OF TIMMINS

APPLICATION PENDING UNDER PUBLIC LANDS ACT NOTICE RECEIVED 93-MAR-30 (SNOWMOBILE TRAIL)

THIS TWP. SUBJECT TO FOREST ACTIVITIES IN 1992-93. FURTHER INFORMATION AVAILABLE ON-FILE.

THE INFORMATION THAT APPEARS ON THIS MAP HAS BEEN COMPILED FROM VARIOUS SOURCES, AND ACCURACY IS NOT GUARANTEED. THOSE WISHING TO STAKE MINING CLAIMS SHOULD CONSULT WITH THE MINING RECORDER, MINISTRY OF NORTHERN DEVELOPMENT AND MINES, FOR ADDITIONAL INFORMATION ON THE STATUS OF THE LANDS SHOWN HEREON.

Bristol Twp.



LEGEND

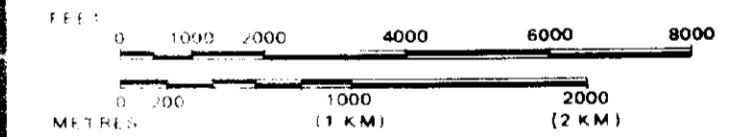
- HIGHWAY AND ROUTE No.
- OTHER ROADS
- TRAILS
- SURVEYED LINES:
 - TOWNSHIPS, BASE LINES, ETC.
 - LOTS, MINING CLAIMS, PARCELS, ETC.
- UNSURVEYED LINES:
 - LOT LINES
 - PARCEL BOUNDARY
 - MINING CLAIMS ETC.
- RAILWAY AND RIGHT OF WAY
- UTILITY LINES
- NON-PERENNIAL STREAM
- FLOODING OR FLOODING RIGHTS
- SUBDIVISION OR COMPOSITE PLAN
- RESERVATIONS
- ORIGINAL SHORELINE
- MARSH OR MUSKEG
- MINES
- TRAVERSE MONUMENT

DISPOSITION OF CROWN LANDS

TYPE OF DOCUMENT	SYMBOL
PATENT, SURFACE & MINING RIGHTS	
" SURFACE RIGHTS ONLY	
" MINING RIGHTS ONLY	
LEASE, SURFACE & MINING RIGHTS	
" SURFACE RIGHTS ONLY	
" MINING RIGHTS ONLY	
LICENCE OF OCCUPATION	
ORDER-IN-COUNCIL	
RESERVATION	
CANCELLED	
SAND & GRAVEL	

NOTE: MINING RIGHTS IN PARCELS PATENTED PRIOR TO MAY 6, 1913, VESTED IN ORIGINAL PATENTEE BY THE PUBLIC LANDS ACT, R.S.O. 1970, CHAP. 380, SEC. 63, SUBSEC. 1

SCALE: 1 INCH = 40 CHAINS



TOWNSHIP AUG 17 1993

THORNELOE DIVISION

M.N.R. ADMINISTRATIVE DISTRICT

TIMMINS

MINING DIVISION

PORCUPINE

LAND TITLES / REGISTRY DIVISION

COCHRANE

Ministry of Land Natural Resources Management Branch

Date MARCH 1985

Number

ACTIVATED JULY 3, 1992 BY D.C.

G-3229

CHECKED BY G.R.W.



MAP SYMBOLOLOGY

Aerial Cableway	Pipeline (above ground)
Boundary	Railroad
International	Single Track
Interprovincial	Double Track
District Township Indian Reserve	Highway
Accession	County
Lot, Concession	Michigan County Township
Approach	Access (road of doubtful maintenance or easement driveway)
Rock Boundary	Trail, Back Road (outage alley)
Bridge	Roads
Wood, Railroad	Under (road with multiple roads)
Building	Under (road with multiple roads)
Chimney	Reservoir
Cliff, Pit, Pile	River, Stream, Canal
Contours	Approach
Infrastructure	Approach
Approximate	Approach
Control Points	Approach
Vertical	Approach
Culvert	Approach
Falls	Approach
Debris	Approach
Fence, Hedge, Wall	Approach
Feature Outline	Approach
Power	Approach
Utility Poles	Approach
Wharf, Dock, Pier	Approach
Wooded Area	Approach

REFERENCES

1:50,000 BATHYMIMETIC MAPS COVER THE WESTERN HALF OF THE TWP. ON THE MATAMORA RIVER FLOWING THROUGH THE TOWNSHIP FILE 37452

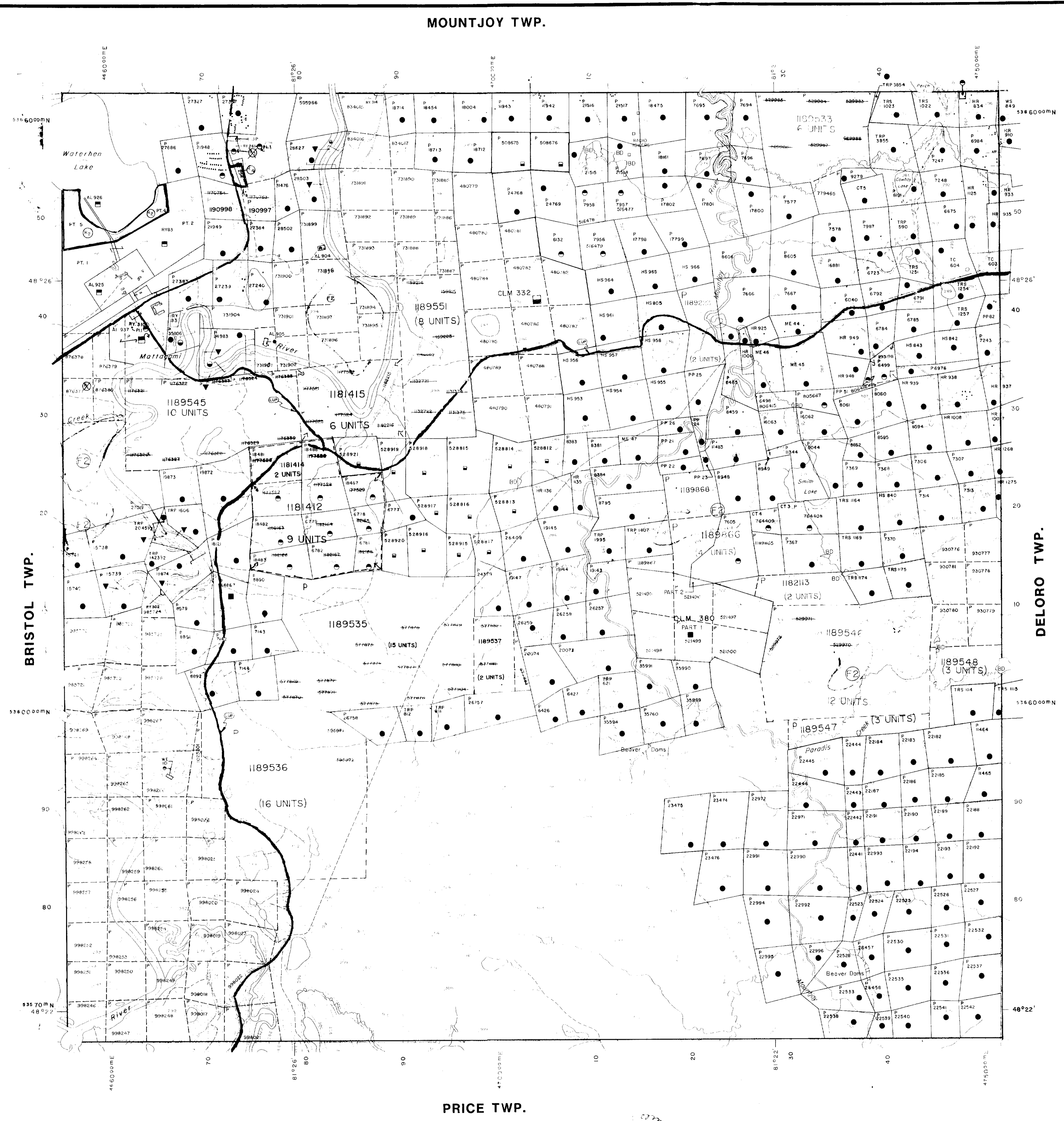
AREAS WITHDRAWN FROM DISPOSITION

M.R.O.	MINING RIGHTS ONLY
S.R.O.	SURFACE RIGHTS ONLY
M+S	MINING AND SURFACE RIGHTS

Disposition: Other No. Date Disposition Fee

- 1. THIS TWP. IS SUBJECT TO THE FOLLOWING ACTIVITIES IN 1979:
 - (a) MINING RIGHTS ONLY
 - (b) SURFACE RIGHTS ONLY
 - (c) MINING AND SURFACE RIGHTS
- 2. THIS TWP. IS SUBJECT TO THE FOLLOWING ACTIVITIES IN 1979:
 - (a) MINING RIGHTS ONLY
 - (b) SURFACE RIGHTS ONLY
 - (c) MINING AND SURFACE RIGHTS
- 3. THIS TWP. IS SUBJECT TO THE FOLLOWING ACTIVITIES IN 1979:
 - (a) MINING RIGHTS ONLY
 - (b) SURFACE RIGHTS ONLY
 - (c) MINING AND SURFACE RIGHTS

THE INFORMATION THAT APPEARS ON THIS MAP HAS BEEN COMPILED FROM VARIOUS SOURCES, AND ACCURACY IS NOT GUARANTEED. THOSE WISHING TO STAKE MINING CLAIMS SHOULD CONSULT WITH THE MINING RECORDER, MINISTRY OF NORTHERN DEVELOPMENT AND MINES, FOR ADDITIONAL INFORMATION ON THE STATUS OF THE LANDS SHOWN HEREON.



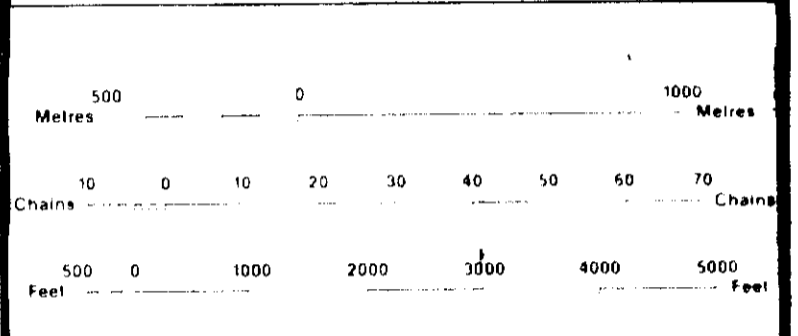
LEGEND

HIGHWAY AND ROUTE No.	
OTHER ROADS	
TRAILS	
SURVEYED LINES	
TOWNSHIPS, BASE LINES, ETC.	
LOTS, MINING CLAIMS, PARCELS, ETC.	
UNSURVEYED LINES	
LOT LINES	
PARCEL BOUNDARY	
MINING CLAIMS ETC.	
RAILWAY AND RIGHT OF WAY	
UTILITY LINES	
NON-PERENNIAL STREAM	
FLOODING OR FLOODING RIGHTS	
SUBDIVISION OR COMPOSITE PLAN	
RESERVATIONS	
ORIGINAL SHORELINE	
MARSH OR MUSKEG	
MINES	
TRAVERSE MONUMENT	

DISPOSITION OF CROWN LANDS

TYPE OF DOCUMENT	SYMBOL
PATENT, SURFACE & MINING RIGHTS	
SURFACE RIGHTS ONLY	
MINING RIGHTS ONLY	
LEASE, SURFACE & MINING RIGHTS	
SURFACE RIGHTS ONLY	
MINING RIGHTS ONLY	
LICENCE OF OCCUPATION	
ORDER-IN-COUNCIL	
RESERVATION	
CANCELLED	
SAND & GRAVEL	

NOTE: MINING RIGHTS IN PARCELS PATENTED PRIOR TO MAY 6 1913, VESTED IN ORIGINAL PATENTEE BY THE PUBLIC LANDS ACT, R.S.O. 1910, CHAP. 380, SEC. 63, SUBSEC. 1.



SCALE 1:20 000
GRID ZONE 17

NOTES

Aug 17 1993

TOWNSHIP
OGDEN
M.N.R. ADMINISTRATIVE DISTRICT
TIMMINS
MINING DIVISION
PORCUPINE
LAND TITLES / REGISTRY DIVISION
COCHRANE

Ministry of Natural Resources
Land Management Branch

ORIGINAL COMPILATION JULY 1984
ACTIVATED JULY 18, 1994 BY D.C.
REVISED
CHECKED BY: G.W.

Number
G-3979

