



42A07NE0161 16 BOND

010

Diamond Drilling

Township of BOND

Report NO 16

Work performed by: Hollinger Mines Limited

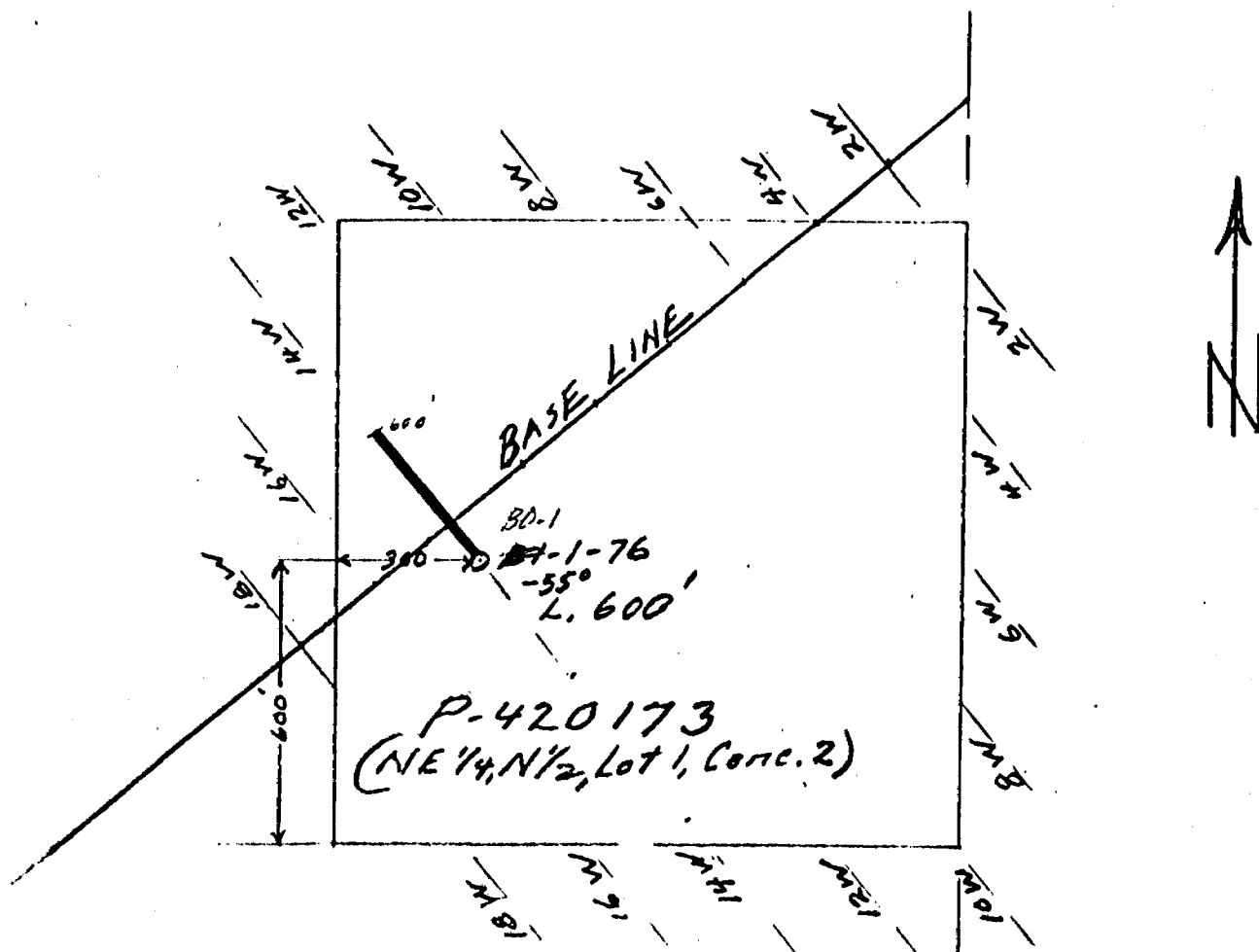
| Claim NO | Hole NO | Footage | Date | Note |
|----------|---------|---------|--------|------|
| P 420173 | B01-76 | 601.0' | Aug/76 | (1) |

Notes:

(1) #126-76

Bond Twp.

#126-76



Started - Aug. 6/76
Finished - Aug. 18/76
Dia. of Core - 1.44 in.
Wire Line - B.Q. Core
Contractor - Bradley Bros. Ltd,
Timmins, Ontario

PLAN OF DDH # ^{B01} ~~B1~~-1-76

Bond #1 Group, Bond Twp, Ont.

Claim P-420173,

Scale - 1" = 400'

W. H. Hansen

HOLLANDER MINES LIMITED

TIMMINS, ONTARIO

Location of Collar from #3 Post of P-420173 North 600'
East 300'

FORM 522

DIAMOND DRILL REPORT

HOLE NO. B01-1-76

NORTH XL 14W
EAST at 1+00 S of B.L.
ELEV. _____
AZIM. Grid North
DIP Collar 55°; 300' - 47°

COMMENCED August 10, 1976
FINISHED August 17, 1976
PURPOSE OF HOLE to test E.M. anomaly

PROPERTY BOND #1 GROUP, Bond Township
Claim P-420173

| FROM | TO | DESCRIPTION | CORE SAMPLES | | | | | DESCRIPTION OF SAMPLE |
|-------|-------|--|--------------|-----|--------|-------|-------|---|
| | | | FROM | TO | RECOV. | WIDTH | ASSAY | |
| 0 | 166 | Casing. | | | | | | |
| | | | 166 | 170 | | 4 | | Qtz feld. Por. |
| 166 | 203 | Qtz feldspar porphyry. Very few qtz eyes. Bleached locally and mineralized with fine pyrite. Numerous phenocrysts of feldspar up to 1/2" in dia. | 170 | 175 | | 5 | | " " " bleached, pyritic |
| | | | 175 | 180 | | 5 | | " " " minor Py. |
| | | | 180 | 185 | | 5 | | " " " " " |
| | | | 185 | 190 | | 5 | | " " " " " |
| | | | 190 | 195 | | 5 | | " " " " " |
| | | | 195 | 200 | | 5 | | " " " " " |
| 203 | 206.5 | Grey cherty tuff or rhyolite. | 200 | 203 | | 3 | | Chloritic Feld. Por. |
| | | | 203 | 205 | | 2 | | Cherty pyritic tuff? |
| | | | 205 | 207 | | 2 | | Cherty rhy.? 5" graphite |
| | | | 207 | 209 | | 2 | | Graphitic tuff + Py along bedding planes. |
| 206.5 | 270.5 | Graphitic bedded tuff or sediment. Banding at 60° to C.A. 64' C.L. Irregular contact at 270.5 with carbonatized Porphyry. | 209 | 210 | | 1 | | Graphite + chert. |
| | | | 210 | 212 | | 2 | | Chert + qtz-cal. str. Pyritic. |
| | | | 212 | 215 | | 3 | | Bedded graphite + Py. |
| | | | 215 | 220 | | 5 | | " " " |
| | | | 220 | 225 | | 5 | | " " " |
| | | | 225 | 227 | | 2 | | " " " |
| | | | 227 | 230 | | 3 | | Qtz-cal. str. Graphitic |
| | | | 230 | 235 | | 5 | | Graphitic tuff + Py. |
| | | | 235 | 240 | | 5 | | " " " |
| | | | 240 | 245 | | 5 | | " " " |
| | | | 245 | 248 | | 3 | | " " " |
| | | | 248 | 250 | | 2 | | Graphitic pyritic qtz bx zone. |

DIAMOND DRILL REPORT

NORTH _____
 EAST _____
 ELEV. _____
 AZIM. _____
 DIP _____

PROPERTY BOND #1 GROUP, Bond Township

COMMENCED _____
 FINISHED _____
 PURPOSE OF _____
 HOLE _____

| FROM | TO | DESCRIPTION | CORE SAMPLES | | | | | DESCRIPTION OF SAMPLE |
|-------|-----|--|--------------|-----|--------|-------|-------|---------------------------------------|
| | | | FROM | TO | RECOV. | WIDTH | ASSAY | |
| | | | | | | | | |
| | | | 250 | 255 | | 5 | | Graphitic pyritic tuff. |
| | | | 255 | 260 | | 5 | | " " " |
| | | | 260 | 265 | | 5 | | " " " |
| | | | 265 | 270 | | 5 | | " " " |
| 270.5 | 335 | Feldspar Por. - maybe a rhyolite? | 270 | 271 | | 1 | | g" graphite, 6" min. Por. |
| | | Carbonatized bluish grey in color, cut | 271 | 275 | | 4 | | Pyritic Por.; sm cal. str. |
| | | by thread-like stringers of qtz-cal. | 275 | 280 | | 5 | | " " " " " |
| | | Sphalerite crystals developed in str | 280 | 285 | | 5 | | " " " " " |
| | | and in rock. Occasional galena. | 285 | 290 | | 5 | | " " " " " |
| | | Locally bleached sections. Shearing | 290 | 295 | | 5 | | " " " " " |
| | | at 10° to 20° to C.A. | 295 | 300 | | 5 | | " " " " " |
| | | | 300 | 305 | | 5 | | " " " " " |
| | | | 305 | 308 | | 3 | | " " " " " |
| | | | 308 | 310 | | 2 | | Bleached white pyritic section. |
| | | | 310 | 313 | | 3 | | Minor bleaching; sheared Po. |
| | | | 313 | 315 | | 2 | | Incr. in sphalerite blue black Por or |
| | | | 315 | 320 | | 5 | | Carbonatized Por. rhyolite. |
| | | | 320 | 325 | | 5 | | " " |
| 335 | 368 | Graphitic pyritic tuff. Locally | 325 | 330 | | 5 | | " " |
| | | brecciated. Stringers of calcite and | 330 | 335 | | 5 | | " " |
| | | galena. Minor sphalerite. Bedding | 335 | 340 | | 5 | | Graphitic breccia + calcite str.; |
| | | at 70° to C.A. | | | | | | Pyrite + galena. |
| | | | 340 | 345 | | 5 | | Graphitic breccia + calcite str; |
| | | | | | | | | pyrite + galena. |

DIAMOND DRILL REPORT

HOLE NO. B01-1-76

3.

NORTH _____
 EAST _____
 ELEV. _____
 AZIM. _____
 DIP _____

PROPERTY BOND #1 GROUP, Bond Township

COMMENCED _____
 FINISHED _____
 PURPOSE OF _____
 HOLE _____

| FROM | TO | DESCRIPTION | CORE SAMPLES | | | | | DESCRIPTION OF SAMPLE |
|------|-----|--|--------------|-----|--------|-------|-------|---|
| | | | FROM | TO | RECOV. | WIDTH | ASSAY | |
| | | | | | | | | |
| | | | 345 | 350 | | 5 | | Graphitic bedded tuff |
| | | | 350 | 355 | | 5 | | " " " |
| | | | 355 | 360 | | 5 | | Bedded graphitic tuff; pyritic + galena |
| | | | 360 | 365 | | 5 | | " " " " " |
| 368 | 397 | Grey green fractured dacite. | 365 | 368 | | 3 | | Pyritic graphitic tuff. |
| | | | | | | | | |
| 397 | 558 | Bedded lapilli tuff. Locally slightly graphitic. Speckled tiny fragments throughout. | 395 | 397 | | 2 | | Pyritic tuff. |
| | | | 397 | 400 | | 3 | | Graphitic pyritic tuff. |
| | | | 400 | 405 | | 5 | | " " " |
| | | | | | | | | |
| | | | 425 | 428 | | 3 | | Pyritic dacite tuff. |
| 558 | 565 | Lost core; mud seam fault. | 430 | 435 | | 5 | | " " " |
| | | | | | | | | |
| 565 | 601 | Coarse-grained Por. appearance to lapilli tuff fragments of rhyolite Por. | 475 | 480 | | 5 | | Graphitic tuff + cubes of py. |
| | | | 485 | 490 | | 5 | | Graphitic tuff + cubes of py. |
| | | | | | | | | |
| | | <i>W. MacKenzie</i> 601' - END OF HOLE | 558 | 560 | | 2 | | Soft mud. |

HOLLINGER MINES LIMITED

TIMMINS, ONTARIO