

## ECHO BAY MINES LTD. - DIAMOND DRILL LOG

Drill Hole Number: CB-13

								Tests	
Project Name:	Currie-Bowman	Grid Northing:	13000E	Measure:	Meters	Depth	Azi.	Dip	
Project Number:	741	Grid Easting:	9925N	Drilled By:	Bradley Brothers	0.0	360	-60	
Claim Number:	1198869	Elevation:	270	Start:	2/21/2002	59.0	-	-59	
Location:	Currie Township	Azimuth:	360	Completed:	3/1/2002	150.0	360	-56	
		Dip:	-60	Core Size:	NQ	296.0	002	-55	
		Length:	518m	Date(s) Logged:	2/24/2002 - 3/01/02	350.0	003	-52	
				Logged By:	Paul Degagne	449.0	004	-50	
						518.0	005	-49	

From (m)	To (m)	Rock Description		Sample	From (m)	To (m)	Length (m)	Au (ppb)	Zn (ppm)
		code	Description						
0.00	49.00		Overburden (sand)						
49.00	79.00		Argillite	4251	200.00	201.00	1.0	10	112
			- very fine grained, bedded at 38 degrees to core axis, black in colour	4252	201.00	202.00	1.0	nil	92
			- weakly graphitic locally	4253	202.00	203.00	1.0	2	93
			- very blocky	4254	203.00	204.00	1.0	34	107
				4255	204.00	205.00	1.0	3	108
79.00	154.50		Feldspar Porphyry Intrusive	4256	205.00	206.00	1.0	7	75
			- light grey, moderately siliceous, massive	4257	206.00	207.00	1.0	10	125
			- 40% feldspar phenocryst up to 5mm in size	4258	207.00	208.00	1.0	2	200
			- locally weak to moderate chlorite alteration	4259	208.00	209.00	1.0	5	121
				4260	209.00	210.00	1.0	10	89
154.50	212.00		Lapilli Tuff (Dacitic)	4261	210.00	211.00	1.0	3	59
			- grey, moderately siliceous with 15% felsic (chert, rhyolite) fragments up to 8cm in diameter. Fragments are sub-rounded to sub-angular	4262	211.00	212.00	1.0	5	133
			- poorly bedded to non-bedded, bedding/foliation at 36 degrees to core axis	4263	346.40	347.40	1.0	nil	7110
			- appears to fining in a down-hole direction to fine grained tuff/volcaniclastic (ie. loss of lapilli clasts)	4264	347.40	348.70	1.3	31	1810
			- locally stringers of sulphide (2-3mm), predominantly pyrite with trace cpy, sph	4265	348.70	349.70	1.0	3	89
			note: good intermittent stringer sulphides (py,cpy,sph) from 208.3 to 208.7 meters	4266	349.70	350.70	1.0	3	56
				4267	350.70	351.70	1.0	5	77
				4268	351.70	352.70	1.0	nil	98
				4269	352.70	353.70	1.0	nil	93
212.00	283.70		Feldspar Porphyry Intrusive	4270	353.70	354.70	1.0	9	47
			- light grey, moderately siliceous, massive	4271	354.70	355.70	1.0	27	74
			- 40% feldspar phenocryst up to 5mm in size, locally 2% quartz eyes (black) up to 2mm diameter	4272	355.70	356.70	1.0	2	87
			- weakly foliated at 46 degrees to core axis near bottom of interval	4273	356.70	357.70	1.0	nil	78
			- trace disseminated pyrite intermittently throughout interval	4274	357.70	358.70	1.0	nil	89
				4275	358.70	359.70	1.0	7	72
				4276	359.70	360.70	1.0	nil	60
283.70	323.30		Argillite	4277	360.70	361.70	1.0	nil	68
			- very fine grained, bedded at 50 degrees to core axis, black in colour	4278	361.70	362.70	1.0	21	133
			- weakly graphitic locally	4279	362.70	363.70	1.0	2	53



From (m)	To (m)	Rock Description		Sample	From (m)	To (m)	Length (m)	Au (ppb)	Zn (ppm)
		code	Description						
323.30	344.60		Feldspar Porphyry Intrusive - same as above	4280	363.70	364.70	1.0	nil	49
				4281	364.70	365.70	1.0	5	85
				4282	365.70	366.70	1.0	21	84
344.60	346.40		Argillite - same as above	4283	404.00	405.00	1.0	nil	43
				4284	405.00	406.00	1.0	69	42
346.40	348.70		Argillite - Semi-Massive Pyrite Zone - 70% massive stringers to nodular pyrite hosted within graphitic argillite - no other visible base metals present	4285	406.00	407.00	1.0	58	358
				4286	407.00	408.00	1.0	19	61
				4287	408.00	409.00	1.0	27	964
				4288	409.00	410.00	1.0	45	371
348.70	352.30		Mineralized Dacite Tuff (ash) - 20% pyrite stringers up to 1cm in thickness as well as lesser pyritic fragments hosted within a grey, weakly sericitic fine grained ash tuff of dacitic composition - unit coarsens in grain size grading into the underlying unit	4289	410.00	411.00	1.0	9	59
				4290	411.00	412.00	1.0	12	138
				4291	412.00	413.00	1.0	5	201
				4292	413.00	414.00	1.0	21	58
				4293	414.00	415.00	1.0	50	103
				4294	415.00	416.00	1.0	48	169
352.30	366.00		Mineralized Dacitic Lapilli Tuff - 30% pyrite as stringers and as matrix hosted within coarse felsic fragmental - fragments (60% of the unit) are rounded to sub-angular, up to 10 cm in length and are composed of chert, rhyolite and feldspar porphyritic tuff or intrusive? - generally unaltered to weakly sericitic	4295	416.00	416.50	0.5	77	196
				4296	437.00	437.70	0.7	14	125
				4297	437.70	438.90	1.2	33	345
				4298	438.90	440.30	1.4	17	500
				4299	440.30	440.70	0.4	130	531
				4300	440.70	441.40	0.7	9	150
366.00	406.00		Feldspathic Dacite Tuff (unmineralized) - unit contains 20% to 30% felspar crystals within a fine grained, weakly foliated grey to grey-green groundmass - unaltered	4351	441.40	442.40	1.0	199	596
				4352	442.40	443.40	1.0	454	1110
				4353	443.40	444.40	1.0	267	33
				4354	444.40	445.40	1.0	1479	1010
				4355	445.40	446.40	1.0	274	253
406.00	416.50		Mineralized Dacite Fragmental - dacite fragmental as above but moderately sericitized with 8% pyrite as stringers and in the matrix	4356	446.40	447.40	1.0	574	2350
				4357	447.40	448.40	1.0	1937	9800
				4358	448.40	449.40	1.0	1193	1530
				4359	449.40	450.40	1.0	732	849
				4360	450.40	451.40	1.0	317	2810
416.50	437.70		Diabase - massive, fine to medium grained, dark black to black-green in colour	4361	451.40	452.40	1.0	182	392
				4362	452.40	453.40	1.0	82	461
				4363	453.40	454.40	1.0	141	350
				4364	454.40	455.40	1.0	135	391
437.70	438.90		Mineralized Dacite Tuff - fine grained tuff as above, but moderately sericitized and silicified, 10% fine pyrite as stringers/bands	4365	455.40	456.40	1.0	271	853
				4366	456.40	457.40	1.0	103	300
				4367	457.40	458.40	1.0	185	285
				4368	458.40	459.40	1.0	366	272
				4369	459.40	460.40	1.0	255	736
438.90	441.40		Diabase - as above but fine frained - mineralized raft of dacite tuff from 440.3 to 440.7 meters	4370	460.40	461.40	1.0	271	1080
				4371	461.40	462.00	0.6	166	1060
441.40	477.00		Mineralized Dacite Tuff - 10% stringer to banded pyrite, with trace sphalerite and chalcopyrite in sericitic +/- silicified dacite tuff	4372	462.00	462.50	0.5	38	146

From (m)	To (m)	Rock Description		Sample	From (m)	To (m)	Length (m)	Au (ppb)	Zn (ppm)	
		code	Description							
477.00	520.00		- pyrite content lessens gradionally downhole to 3% at bottom of interval	4373	462.50	463.00	0.5	2	96	
				4374	463.00	464.00	1.0	91	463	
			Dacite Tuff - Weakly Altered							
			- same unit as above, alteration and mineralization decreasing in intensity downhole.	4375	464.00	465.00	1.0	70	297	
			- Unit generally sericitic to chloritic with 1% pyrite (on average) with up to 3% locally (bands, disseminations)	4376	465.00	466.00	1.0	132	2090	
			- 10% pyrite with trace chalcopyrite as stingers from 507 to 507.6 meters	4377	466.00	467.00	1.0	65	882	
				4378	467.00	468.00	1.0	79	540	
				4379	468.00	469.00	1.0	108	536	
				4380	469.00	470.00	1.0	170	402	
				4381	470.00	471.00	1.0	228	381	
		520.00		End Of Hole	4382	471.00	472.00	1.0	115	216
					4383	472.00	473.00	1.0	101	206
				note: bold, italicized values are averaged from original and check values	4384	473.00	474.00	1.0	106	161
					4385	474.00	475.00	1.0	46	167
					4386	475.00	476.00	1.0	93	148
					4387	476.00	477.00	1.0	159	208
					4388	477.00	478.00	1.0	170	383
					4389	478.00	479.00	1.0	117	274
					4390	479.00	480.00	1.0	105	427
					4391	480.00	481.00	1.0	153	1290
				4392	481.00	482.00	1.0	103	1470	
				4393	505.00	506.00	1.0	17	154	
				4394	506.00	507.00	1.0	27	175	
				4395	507.00	508.00	1.0	96	244	
				4396	508.00	509.00	1.0	51	1560	
				4397	509.00	510.00	1.0	29	447	

## ECHO BAY MINES LTD. - DIAMOND DRILL LOG

Drill Hole Number: CB-14

Project Name: Currie-Bowman  
 Project Number: 741  
 Claim Number: 1198869  
 Location: Currie Township

Grid Northing: 13500E  
 Grid Easting: 9925N  
 Elevation: 270  
 Azimuth: 360  
 Dip: -45  
 Length: 258

Measure: Meters  
 Drilled By: Bradley Brothers  
 Start: 3/1/2002  
 Completed: 3/4/2002  
 Core Size: NQ  
 Date(s) Logged: 4-Mar-02  
 Logged By: Paul Degagne

Tests  
 Azi. 360  
 002  
 002  
 -  
 Dip  
 -45  
 -44  
 -41  
 -38

From (m)	To (m)	Rock Description		Sample	From (m)	To (m)	Length (m)	Au (ppb)	Zn (ppm)
		code	Description						
0.00	43.00		Overburden (sand)						
43.00	79.00		Feldspar Porphyry Intrusive - light grey, moderately siliceous, massive - 40% feldspar phenocryst up to 5mm in size - locally weak to moderate chlorite alteration	4401	164.70	165.70	1.0	17	81
				4402	165.70	166.70	1.0	34	127
				4403	166.70	167.70	1.0	3	108
				4404	167.70	168.70	1.0	39	186
				4405	168.70	169.70	1.0	nil	101
79.00	160.30		Argillite - black, thinly bedded at 50 degrees to core axis, extremely graphitic - very blocky to 110 meters - graphitic content decreases past 110 meters	4406	169.70	170.70	1.0	5	171
				4407	170.70	171.70	1.0	2	164
				4408	171.70	172.70	1.0	nil	136
				4409	172.70	173.70	1.0	nil	139
				4410	173.70	174.70	1.0	nil	166
160.30	164.00		Feldspar Porphyry Intrusive - light grey, moderately siliceous, massive - 20% feldspar phenocryst up to 5mm in size - weakly foliated at 50 degrees to core axis	4411	174.70	175.70	1.0	34	82
				4412	175.70	176.70	1.0	39	756
				4413	176.70	177.70	1.0	26	719
				4414	177.70	178.70	1.0	9	700
				4415	178.70	179.70	1.0	12	78
164.00	165.70		Argillite - very fine grined, greyish-yellow (weak to moderate sericite alteration)	4416	179.70	180.70	1.0	74	2420
				4417	180.70	181.70	1.0	24	102
				4418	181.70	182.70	1.0	10	87
165.70	229.30		Weakly Mineralized Dacite Tuff - grey to greyish yellow, weak to moderate sericite alteration, moderately siliceous, locally quartz porphyritic - generally fine grained but locally sections contain lapilli clasts, feldspar phyruc phases - 10% pyrite as 1-2 mm stringers and bands as well as fine disseminations throughout unit - unit becomes less altered (less sericitic) past 186 meters, pyrite content decreases past 186 meters and gradationally decreases from 35 to less than 1% at the bottom of the interval	4419	182.70	183.70	1.0	5	64
				4420	183.70	184.70	1.0	24	37
				4421	184.70	185.70	1.0	57	498
				4422	185.70	186.70	1.0	34	163
				4423	186.70	187.70	1.0	5	253
				4424	187.70	188.70	1.0	nil	102
				4425	188.70	189.70	1.0	nil	53
				4426	189.70	190.70	1.0	nil	125
				4427	190.70	191.70	1.0	31	62
				4428	191.70	192.70	1.0	nil	163
				4429	192.70	193.70	1.0	27	80
				4430	193.70	194.70	1.0	17	252



From (m)	To (m)	Rock Description		Sample	From (m)	To (m)	Length (m)	Au (ppb)	Zn (ppm)
		code	Description						
229.30	258.00		Feldspar Porphyry Intrusive - light grey, moderately siliceous, massive - 40% feldspar phenocryst up to 5mm in size - locally weak to moderate chlorite alteration						
	258.00		End Of Hole						

## ECHO BAY MINES LTD. - DIAMOND DRILL LOG

Drill Hole Number: CB-15

Project Name:	Currie-Bowman	Grid Northing:	13700E	Measure:	Meters	Depth:	Tests	
Project Number:	741	Grid Easting:	9910N	Drilled By:	Bradley Brothers	0.0	Azi.	Dip
Claim Number:	1198869	Elevation:	270	Start:	3/4/2002	83.0	360	-45
Location:	Currie Township	Azimuth:	360	Completed:	3/7/2002	185.0	001	-37
		Dip:	-45	Core Size:	NQ			
		Length:	185 meters	Date(s) Logged:	7-Mar-02			
				Logged By:	Paul Degagne			

From (m)	To (m)	Rock Description		Sample	From (m)	To (m)	Length (m)	Au (ppb)	Zn (ppm)
		code	Description						
0.00	70.00		Overburden (sand)						
70.00	107.90		Argillite	4431	126.30	127.35	1.1	38	215
			- light grey to black, well bedded at 50 degrees to core axis	4432	127.35	128.35	1.0	365	18100
			- weakly graphitic	4433	128.35	129.40	1.1	77	2150
				4434	129.40	130.40	1.0	63	2690
				4435	130.40	131.40	1.0	173	16100
107.90	117.60		Feldspar Porphyry Intrusive	4436	131.40	132.40	1.0	195	4990
			- light grey, moderately siliceous, massive	4437	132.40	133.40	1.0	79	915
			- 30% feldspar phenocryst up to 5mm in size	4438	133.40	134.40	1.0	254	667
			- blocky	4439	134.40	135.40	1.0	3	536
				4440	135.40	136.40	1.0	5	572
117.60	127.35		Argillite	4441	136.40	137.40	1.0	14	1250
			- same as above	4442	137.40	138.10	0.7	170	4830
				4443	138.10	139.40	1.3	357	14900
127.35	153.00		Mineralized Dacite Tuff	4444	139.40	140.40	1.0	36	551
			- generally fine grained but locally sections contain lapilli clasts, feldspar phyrlic phases	4445	140.40	141.40	1.0	nil	109
				4446	141.40	142.40	1.0	nil	84
				4447	142.40	143.40	1.0	nil	67
153.00	185.00		Dacite Tuff	4448	143.40	144.40	1.0	nil	210
			- grey, unaltered looking, aphanitic to feldspathic phases intermixed throughout section	4449	144.40	145.40	1.0	nil	892
			- weakly foliated at 58 degrees to core axis	4450	145.40	146.40	1.0	89	3110
				4451	146.40	146.40	0.0	nil	1410
				4452	146.40	148.40	2.0	10	196
	185.00		End Of Hole	4453	148.40	149.40	1.0	nil	194
				4454	149.40	150.40	1.0	nil	135
				4455	150.40	151.40	1.0	nil	444
				4456	151.40	152.40	1.0	22	91
				4457	152.40	153.40	1.0	21	814
				4458	153.40	154.40	1.0	17	245
				4459	154.40	155.40	1.0	19	148
				4460	155.40	156.40	1.0	nil	328



## ECHO BAY MINES LTD. - DIAMOND DRILL LOG

MAY 01 2002

Drill Hole Number: CB-16

Project Name:	Currie-Bowman	Grid Northing:	13900E	Measure:	Meters	Depth	0.0	360	-45
Project Number:	741	Grid Easting:	9925N	Drilled By:	Bradley Brothers	0.0	360	-45	-42.5
Claim Number:	1198869	Elevation:	270	Start:	3/8/2002	62.0	001	-41	-36
Location:	Currie Township	Azimuth:	360	Completed:	3/15/2002	161.0	002	-36	-35
		Dip:	-45	Core Size:	NQ	263.0	003		
		Length:	350m	Date(s) Logged:	3/11-16/2002	350.0	007		
				Logged By:	Ryburn Norman, Paul Degagne				

From (m)	To (m)	Rock Description		Sample	From (m)	To (m)	Length (m)	Au (ppb)	Zn (ppm)
		code	Description						
0.00	53.00		Overburden (sand)						
53.00	86.10		Argillite - fine grained, grey to black interbeds at 60 degrees to core axis - graphitic to 56 meters with up to 10% pyrite	4461	94.90	95.90	1.0	29	47
				4462	95.90	96.60	0.7	10	60
				4463	102.10	103.40	1.3	12	87
86.10	105.50		Feldspar Porphyry (Intrusive) - 40% feldspar crystals (5mm in size) in massive, fine grained grey matrix - weakly foliated, siliceous with 1% fine pyrite from 94.9 to 96.6 meters - dacite tuff bed from 102.1 to 103.3: sericitic, minor fuchite, 1% fine pyrite, foliated at 70 degrees to core axis	4464	117.70	118.80	1.1	147	11500
				4465	118.80	119.40	0.6	79	2350
				4466	119.40	120.40	1.0	22	323
				4467	120.40	121.40	1.0	51	475
				4468	121.40	122.40	1.0	93	1280
				4469	122.40	123.40	1.0	141	5030
105.50	117.70		Argillite - as above - heavy pyrite (40%) from 116.4 to 117.0 meters	4470	123.40	124.00	0.6	449	4670
				4471	124.00	124.40	0.4	1817	12900
				4472	124.40	125.40	1.0	602	2020
				4473	125.40	126.40	1.0	219	3460
				4474	126.40	127.40	1.0	141	3580
117.70	119.40		Mineralized Dacite Tuff (Ash) - well foliated (60 degrees to core axis), strongly sericitized ash tuff with 20% banded pyrite, and honey-brown sphalerite (up to 5%) throughout	4475	127.40	128.40	1.0	2452	1680
				4476	128.40	129.40	1.0	269	2460
				4477	129.40	130.40	1.0	62	4920
				4478	130.40	131.40	1.0	55	5280
119.40	127.10		Mineralized Dacite Tuff (Lapilli) - as above but predominantly lapilli sized clasts throughout - pyrite content is approximately 10% with trace sphalerite in weakly sericitized tuff - fuchite as clots throughout section - intensity of sericite alteration decreases downhole, much less sericitic from 122.6 meters, with 10% pyrite and occasional sphalerite stringers	4479	131.40	132.40	1.0	122	6260
				4480	132.40	133.40	1.0	1680	9660
				4481	133.40	134.40	1.0	449	5410
				4482	134.40	135.40	1.0	17	6680
				4483	135.40	136.40	1.0	nil	3150
				4484	136.40	137.40	1.0	19	1590
				4485	137.40	138.40	1.0	5	147
127.10	137.00		Weakly Mineralized Dacite Tuff - 5% pyrite in weakly sericitic fine grained foliated tuff - trace sphalerite blebs and stringers throughout section	4486	138.40	139.40	1.0	5	80
				4487	139.40	140.40	1.0	3	73
				4488	140.40	141.40	1.0	10	63
				4489	141.40	142.40	1.0	nil	54
				4490	142.40	143.40	1.0	nil	51

RECEIVED

MAY 01 2002

GEOSCIENCE ASSESSMENT  
OFFICE

1



42A07NE2018 2.23451

CURRIE

040

From (m)	To (m)	Rock Description		Sample	From (m)	To (m)	Length (m)	Au (ppb)	Zn (ppm)
		code	Description						
137.00	156.80		Feldspar Porphyry (Intrusive) - fine to medium grained, massive, grey to locally olive green hue						
156.80	322.00		Dacite Tuff (Feldspathic phases) - interbedded feldspathic phases (similar in appearance to feldspar porphyry intrusive) with fine grained aphanitic sections - feldspars hematized from 166m to 186m - generally unaltered and unmineralized note: difficult to determine if portions of unit are intrusive feldspar porphyry or feldspar phyric tuff units						
322.00	350.00		Diabase - fine grained , massive dark green-black in colour, magnetic - sections on feldspatic tuff? From : :324.0 - 325.5 :326.2 - 332.6 :333.3 - 333.8 :334.3 - 334.8						
	350.00		End Of Hole  note: bold and italicized gold assay values are averages of original and check assay results						





Established 1928



42A07NE2018 2.23451 CURRIE

050

# Swastika Laboratories Ltd

Assaying - Consulting - Representation

Page 1 of 2

## Geochemical Analysis Certificate

2W-0520-RG1

Company: **ECHO BAY MINES LTD**

Date: MAR-13-02

Project: 741

Attn: P. Degagne

We hereby certify the following Geochemical Analysis of 42 Core samples submitted MAR-06-02 by .

Sample Number	Au PPB	Au Check PPB	Ag g/tonne	As PPM	Cu PPM	Pb PPM	Zn PPM
4281	5	3	0.3	19	27	2	85
4282	21	-	0.1	<5	23	1	84
4283	Nil	-	0.2	27	31	1	43
4284	69	-	0.3	31	33	1	42
4285	58	-	0.8	41	33	2	358
4286	19	-	0.5	20	22	1	61
4287	27	-	1.0	22	38	5	964
4288	45	-	1.1	11	30	13	371
4289	9	-	0.3	29	28	1	59
4290	12	-	0.5	23	29	22	138
4291	5	-	0.4	20	33	1	201
4292	21	-	0.7	44	27	16	58
4293	50	51	1.0	76	24	32	103
4294	48	-	0.7	64	21	12	169
4295	77	-	0.5	55	28	3	196
4296	14	-	0.2	<5	42	8	125
4297	33	-	0.8	<5	35	37	345
4298	17	-	0.3	<5	72	1	500
4299	130	-	0.7	<5	34	38	531
4300	9	-	0.4	<5	58	2	150
4351	199	-	2.3	76	58	18	596
4352	454	-	3.9	107	71	7	1110
4353	267	-	2.3	124	20	8	33
4354	1586	1371	26.5	214	66	33	1010
4355	274	-	2.4	108	32	8	253
4356	574	-	9.1	404	385	386	2350
4357	1817	2057	14.1	407	345	696	9800
4358	1193	-	8.4	323	113	94	1530
4359	732	-	7.7	679	177	92	849
4360	317	-	4.0	140	146	277	2810

One assay ton portion used for Au.

Certified by Denis Chantre



Established 1928

# Swastika Laboratories Ltd

Assaying - Consulting - Representation

Page 2 of 2

## Geochemical Analysis Certificate

2W-0520-RG1

Company: **ECHO BAY MINES LTD**

Date: MAR-13-02

Project: 741

Attn: P. Degagne

We hereby certify the following Geochemical Analysis of 42 Core samples submitted MAR-06-02 by .

Sample Number	Au PPB	Au Check PPB	Ag g/tonne	As PPM	Cu PPM	Pb PPM	Zn PPM
4361	182	-	1.6	85	32	54	392
4362	82	-	1.1	44	28	87	461
4363	141	-	0.9	71	46	49	350
4364	135	-	1.0	31	33	18	391
4365	271	-	2.3	84	49	25	853
4366	103	-	0.9	68	36	26	300
4367	185	-	3.0	60	45	186	285
4368	389	343	1.5	62	37	47	272
4369	255	-	2.7	82	72	250	736
4370	271	-	1.9	121	44	178	1080
4371	166	-	2.1	84	55	46	1060
4372	38	-	0.5	43	18	3	146

One assay ton portion used for Au.

Certified by *Dennis Chantler*



Established 1928

# Swastika Laboratories Ltd

Assaying - Consulting - Representation

Page 1 of 2

## Geochemical Analysis Certificate

2W-0553-RG1

Company: **ECHO BAY MINE LTD**

Date: MAR-22-02

Project: 741

Attn: P.Degagne

We hereby certify the following Geochemical Analysis of 55 Core samples submitted MAR-11-02 by .

Sample Number	Au PPB	Au Check PPB	Ag PPM	As PPM	Cu PPM	Pb PPM	Zn PPM
4373	2	-	0.2	9	22	1	96
4374	91	-	0.7	26	42	48	463
4375	70	-	0.7	63	47	29	297
4376	132	123	1.2	67	41	56	2090
4377	65	51	1.0	18	21	51	882
4378	79	-	0.8	42	25	77	540
4379	108	-	0.9	50	23	66	536
4380	170	-	0.8	83	32	100	402
4381	228	-	0.8	68	26	63	381
4382	115	-	0.7	72	61	18	216
4383	101	-	0.9	113	49	35	206
4384	106	-	0.5	57	41	6	161
4385	46	-	0.6	77	25	16	167
4386	93	-	1.2	69	26	25	148
4387	159	-	5.2	55	27	32	208
4388	170	-	0.9	82	24	91	383
4389	117	-	1.0	77	23	22	274
4390	105	-	0.9	61	26	12	427
4391	153	154	2.3	56	41	31	1290
4392	103	106	2.0	53	27	23	1470
4393	17	-	0.2	16	13	1	154
4394	27	-	0.5	<5	15	1	175
4395	96	-	1.0	27	88	1	244
4396	51	50	0.6	16	354	1	1560
4397	29	-	0.3	13	27	1	447
4401	17	-	0.2	15	39	3	81
4402	34	-	0.9	61	78	16	127
4403	3	-	0.2	21	34	1	108
4404	39	-	1.0	30	21	11	186
4405	Nil	-	0.4	12	21	1	101

One assay ton portion used for Au.

Certified by Denis Chandra



Established 1928

# Swastika Laboratories Ltd

Assaying - Consulting - Representation

Page 2 of 2

## Geochemical Analysis Certificate

2W-0553-RG1

Company: **ECHO BAY MINE LTD**  
Project: 741  
Attn: P.Degagne

Date: MAR-22-02

We hereby certify the following Geochemical Analysis of 55 Core samples submitted MAR-11-02 by .

Sample Number	Au PPB	Au Check PPB	Ag PPM	As PPM	Cu PPM	Pb PPM	Zn PPM
4406	5	-	0.9	30	20	1	171
4407	2	-	0.9	7	25	4	164
4408	Nil	-	1.9	17	16	18	136
4409	Nil	-	1.5	17	19	21	139
4410	Nil	-	2.2	11	21	20	166
4411	34	-	1.8	34	18	8	82
4412	39	-	2.9	53	23	37	756
4413	26	34	4.6	47	23	31	719
4414	9	-	2.6	71	22	61	700
4415	12	-	1.5	57	21	10	78
4416	74	-	9.3	39	46	640	2420
4417	24	-	2.0	35	24	9	102
4418	10	-	1.0	23	20	4	87
4419	5	-	0.8	37	18	1	64
4420	24	-	1.1	40	14	5	37
4421	57	46	1.0	34	23	3	498
4422	34	-	0.7	10	15	5	163
4423	5	-	0.5	19	17	18	253
4424	Nil	-	0.6	<5	15	13	102
4425	Nil	-	0.5	<5	13	6	53
4426	Nil	-	0.5	<5	16	12	125
4427	31	-	0.2	8	16	3	62
4428	Nil	-	0.8	11	20	13	163
4429	27	-	1.8	26	24	27	80
4430	17	-	1.4	19	27	21	252

One assay ton portion used for Au.

Certified by *Dennis Chant*



Established 1928

# Swastika Laboratories Ltd

Assaying - Consulting - Representation

## Geochemical Analysis Certificate

2W-0554-RG1

Company: **ECHO BAY MINE LTD**

Date: MAR-22-02

Project: 741

Attn: P.Degagne

We hereby certify the following Geochemical Analysis of 30 Core samples submitted MAR-11-02 by .

Sample Number	Au PPB	Au Check PPB	Ag PPM	As PPM	Cu PPM	Pb PPM	Zn PPM	Zn %
4431	38	-	2.1	41	68	271	215	-
4432	365	358	62.1	419	141	1270	>10000	1.81
4433	77	65	10.4	93	40	92	2150	-
4434	63	-	5.8	51	37	78	2690	-
4435	173	175	37.9	496	124	672	>10000	1.61
4436	195	223	103.6	1870	111	1900	4990	-
4437	79	-	46.0	437	30	294	915	-
4438	254	-	12.1	273	25	87	667	-
4439	3	-	1.9	82	21	19	536	-
4440	5	-	2.1	62	24	58	572	-
4441	14	-	3.2	61	25	71	1250	-
4442	170	-	19.5	161	102	176	4830	-
4443	357	339	78.5	185	108	5760	>10000	1.49
4444	36	-	4.8	91	33	115	551	-
4445	Nil	-	1.6	40	21	16	109	-
4446	Nil	-	1.4	51	22	5	84	-
4447	Nil	-	1.5	22	19	2	67	-
4448	Nil	-	1.6	48	26	6	210	-
4449	Nil	-	2.0	21	53	27	892	-
4450	89	81	2.8	27	56	35	3110	-
4451	Nil	-	1.2	36	47	16	1410	-
4452	10	-	1.0	14	22	12	196	-
4453	Nil	-	1.0	55	25	17	194	-
4454	Nil	-	0.8	29	37	2	135	-
4455	Nil	-	2.3	30	28	20	444	-
4456	22	-	2.0	33	32	12	91	-
4457	21	-	3.4	62	48	21	814	-
4458	17	-	1.6	88	38	39	245	-
4459	19	-	1.1	39	63	11	148	-
4460	Nil	-	0.8	31	45	15	328	-

One assay ton portion used for Au.

Certified by Denis Chantre



Established 1928

# Swastika Laboratories Ltd

Assaying - Consulting - Representation

## Geochemical Analysis Certificate

2W-0608-RG1

Company: **ECHO BAY MINES LTD**  
Project: 741  
Attn: P.Degagne

Date: MAR-28-02

We hereby certify the following Geochemical Analysis of 30 Core samples submitted MAR-18-02 by .

Sample Number	Au PPB	Au Check PPB	Ag PPM	As PPM	Cu PPM	Pb PPM	Zn PPM	Zn %
4461	29	-	0.1	<5	18	13	47	-
4462	10	-	0.1	<5	15	3	60	-
4463	12	-	0.1	<5	13	5	87	-
4464	147	146	24.3	260	61	962	10000	1.15
4465	79	-	11.2	85	36	45	2350	-
4466	22	-	3.1	14	26	52	323	-
4467	51	-	4.5	52	22	54	475	-
4468	93	-	3.0	47	33	59	1280	-
4469	141	-	1.4	9	27	5	5030	-
4470	449	-	2.8	12	44	3	4670	-
4471	1920	1714	11.2	125	4220	3	10000	1.29
4472	602	-	1.7	40	37	4	2020	-
4473	219	-	2.5	32	51	6	3460	-
4474	141	-	0.7	<5	37	4	3580	-
4475	2400	2503	1.5	9	18	1	1680	-
4476	281	257	0.4	<5	57	7	2460	-
4477	62	-	0.2	<5	64	10	4920	-
4478	55	-	0.2	<5	78	24	5280	-
4479	122	-	0.3	<5	57	1	6260	-
4480	1646	1714	0.8	<5	71	1	9660	-
4481	449	-	0.5	<5	111	3	5410	-
4482	17	-	0.5	<5	292	12	6680	-
4483	Nil	-	0.3	<5	143	7	3150	-
4484	19	-	0.5	<5	109	75	1590	-
4485	5	-	0.3	<5	45	4	147	-
4486	5	-	0.1	<5	14	11	80	-
4487	3	-	0.1	<5	9	12	73	-
4488	10	-	0.1	11	8	15	63	-
4489	Nil	-	0.1	14	8	14	54	-
4490	Nil	-	0.1	12	7	13	51	-

One assay ton portion used for Au.

Certified by *Dennis Chantre*



Date: 2002-JUN-12

GEOSCIENCE ASSESSMENT OFFICE  
933 RAMSEY LAKE ROAD, 6th FLOOR  
SUDBURY, ONTARIO  
P3E 6B5

FALCONBRIDGE LIMITED  
SUITE 1200, 95 WELLINGTON STREET WEST  
TORONTO, ONTARIO  
M5J 2V4 CANADA

Tel: (888) 415-9845  
Fax: (877) 670-1555

**Submission Number:** 2.23451  
**Transaction Number(s):** W0280.00732

Dear Sir or Madam

**Subject: Approval of Assessment Work**

We have approved your Assessment Work Submission with the above noted Transaction Number(s). The attached Work Report Summary indicates the results of the approval.

At the discretion of the Ministry, the assessment work performed on the mining lands noted in this work report may be subject to inspection and/or investigation at any time.

If you have any question regarding this correspondence, please contact STEVEN BENETEAU by email at [steve.beneteau@ndm.gov.on.ca](mailto:steve.beneteau@ndm.gov.on.ca) or by phone at (705) 670-5855.

Yours Sincerely,



Ron Gashinski  
Senior Manager, Mining Lands Section

**Cc:** Resident Geologist

Cross Lake Minerals Ltd.  
(Claim Holder)

Falconbridge Limited  
(Claim Holder)

Assessment File Library

Echo Bay Mines Ltd.  
(Claim Holder)

Falconbridge Limited  
(Assessment Office)





MINISTRY OF  
NORTHERN DEVELOPMENT  
AND MINES  
PROVINCIAL MINING  
REGISTRAR'S OFFICE

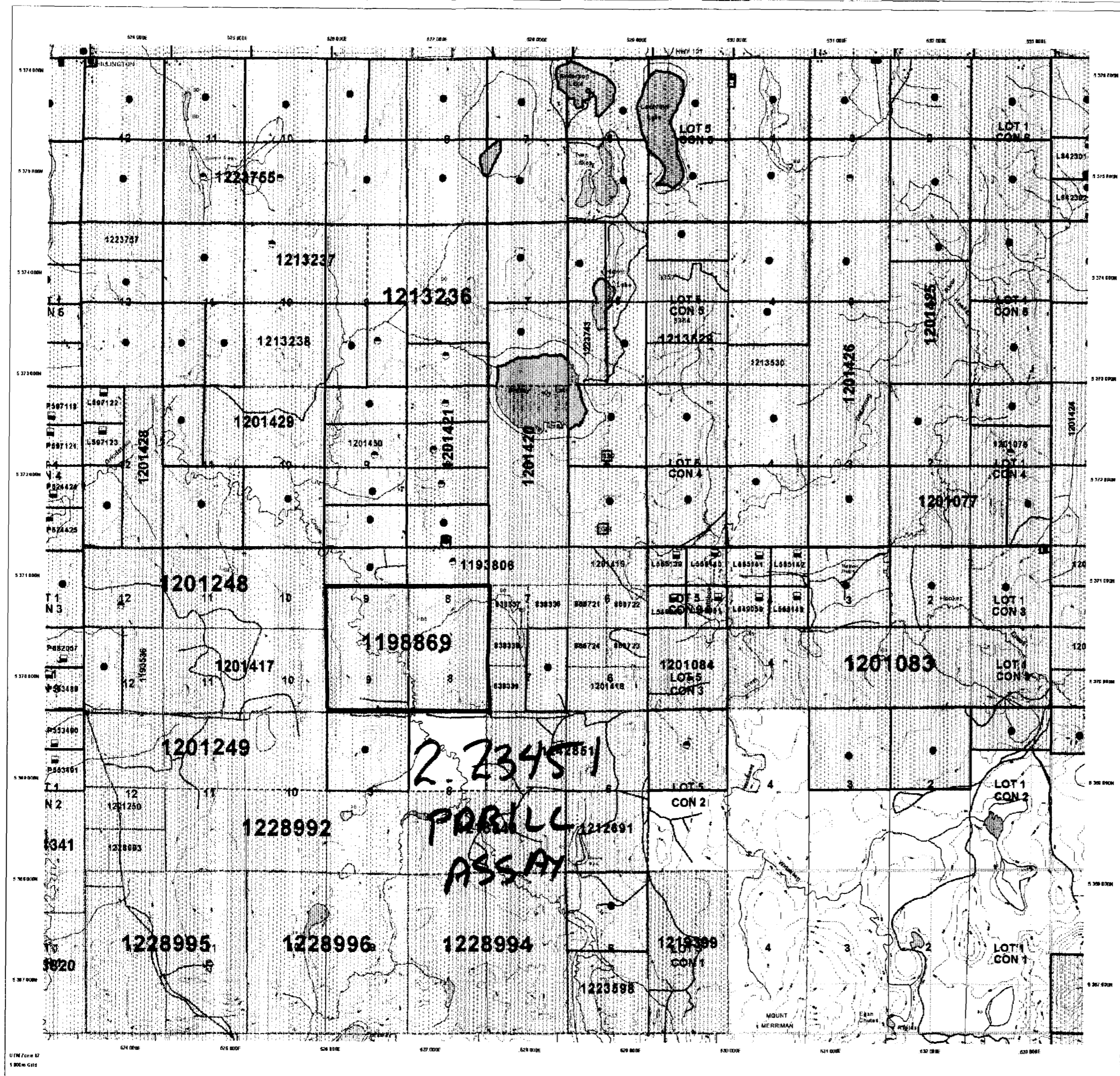
**MINING LAND TENURE  
MAP**

Date / Time of Issue Aug 27 2001 12:45h Eastern

TOWNSHIP / AREA  
CURRIE

PLAN  
M-0341

ADMINISTRATIVE DISTRICTS / DIVISIONS  
Mining Division Larder Lake  
Land Titles/Registry Division COCHRANE  
Ministry of Natural Resources District KIRKLAND LAKE



**TOPOGRAPHIC**

- Administrative Boundary
- Township
- Concession, Lot
- Private Plan
- Local Plan
- City Boundary
- Commut. - Approx. Aquifer Expression
- Shed
- Min. Infill Area
- Railway
- Road
- Tie
- Natural Gas Pipeline
- Hydro Line
- Common Drain Line
- Wooded Area
- Measurement - Central Horizontal North Coordinate

**LAND TENURE**

**Private Plans**

- Surface and Mining Rights
- Surface Rights Only
- Mining Rights Only

**Leasehold Plans**

- Surface and Mining Rights
- Surface Rights Only
- Mining Rights Only

**Licence of Occupation**

- Lease and Surface
- Surface and Mining Rights
- Surface Rights Only
- Mining Rights Only

**Other Land Tenure**

- Land Use Easement
- Open in Court
- Water Power Lease Agreement
- Mining Claim

**LAND TENURE WITHDRAWALS**

- Area Withdrawn from Disposition Mining Act Withdrawal Types
- W1 Surface and Mining Rights Withdrawal
- W2 Surface Rights Only Withdrawal
- W3 Mining Rights Only Withdrawal
- W4 Other or Council Withdrawal Types
- W5 Surface and Mining Rights Withdrawal
- W6 Surface Rights Only Withdrawal
- W7 Mining Rights Only Withdrawal

**IMPORTANT NOTICES**



**LAND TENURE WITHDRAWAL DESCRIPTIONS**

Number	Type	Date	Description
2237	W1	Jan 3 2001	WITHDRAWN FROM STAKING
2238	W1	Jan 3 2001	FLOODING ELEVATION: 800 A.S.L. L.O. 8075
2239	W1	Jan 3 2001	400 FT SURFACE RIGHTS RESERVATION AROUND ALL LARRES & BARRIS
2240	W1	Jan 3 2001	SURFACE RIGHTS WITHDRAWN FROM STAKING

**IMPORTANT NOTICES**  
Areas under which special regulations, prohibitions or restrictions apply that affect normal prospecting, mining and mineral development activities.



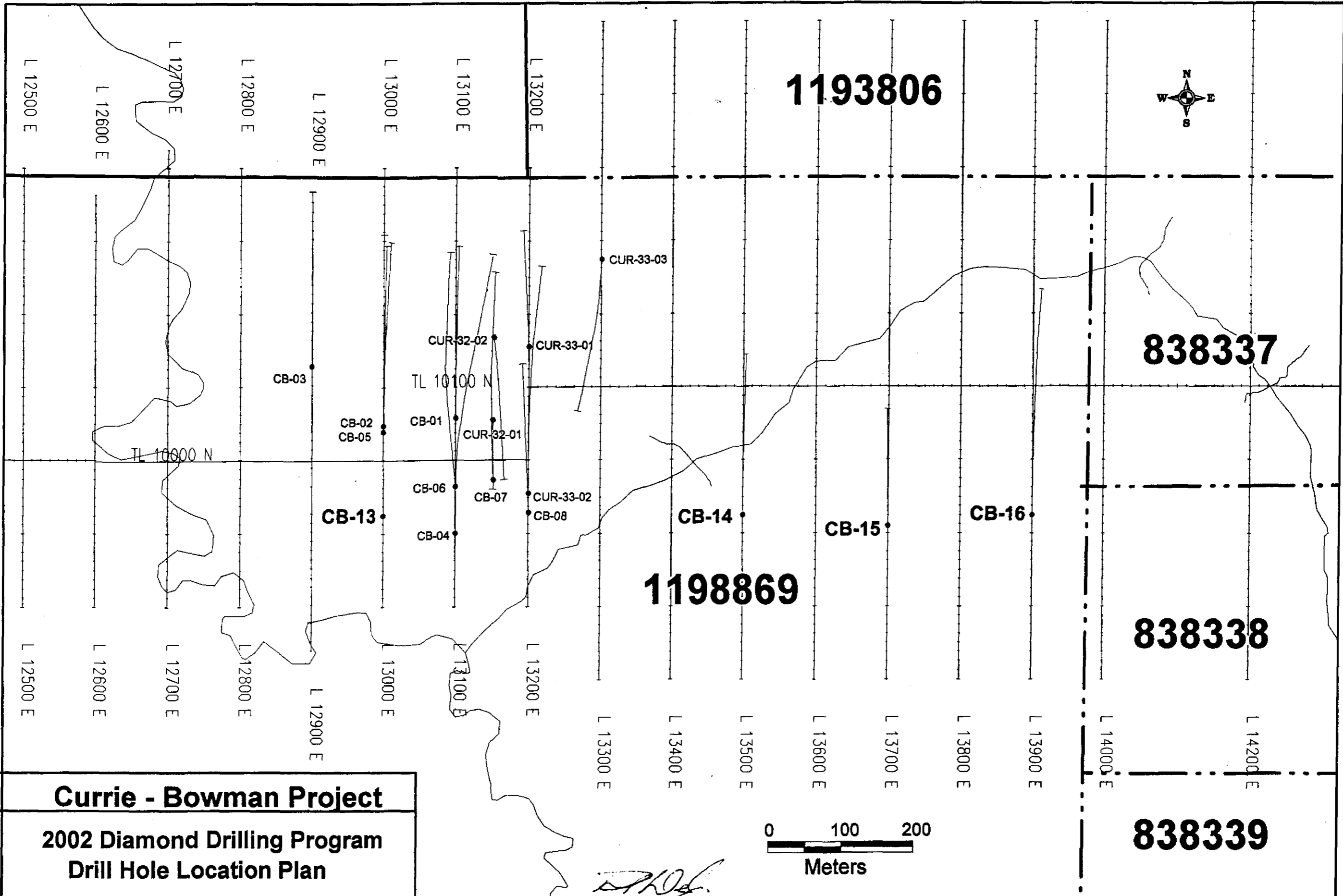
These mining claims should be consulted with the Provincial Mining Registrar's Office of the Ministry of Northern Development and Mines for additional information on the status of the mining claims. This information is not intended for publication, survey or land title interpretation purposes and the information provided is for informational purposes only. The information is not guaranteed to be accurate and is subject to change without notice. Additional information may be obtained through the local Land Titles Registry Office, or the Ministry of Natural Resources.

**General Information and Limitations**

Created Information:  
Provincial Mining Registrar's Office 1 94 1000  
Water Street Mining Centre Fax: (800) 416-6622  
333 Rossby Lake Road Fax: (907) 878-5444  
Sudbury, ON P3E 9B5  
Home Page: <http://www.gov.on.ca/MNDM/MINE/SLANDS/Information.htm>

Map Scale: 1:50,000  
Projection: UTM (NAD 83)  
Topographic Data Source: 1:50,000  
Mining Land Tenure Source: Provincial Mining Registrar's Office

This map may not show uncoloured land tenure and interests in land including claims, interests, easements, right of way, riparian rights, leases, licences, or other forms of disposition of rights and interests in the Currie. This map is not intended to be used as a basis for any legal proceedings or other activities.



9850N

9900N

9950N

10000N

10050N

10100N

10150N

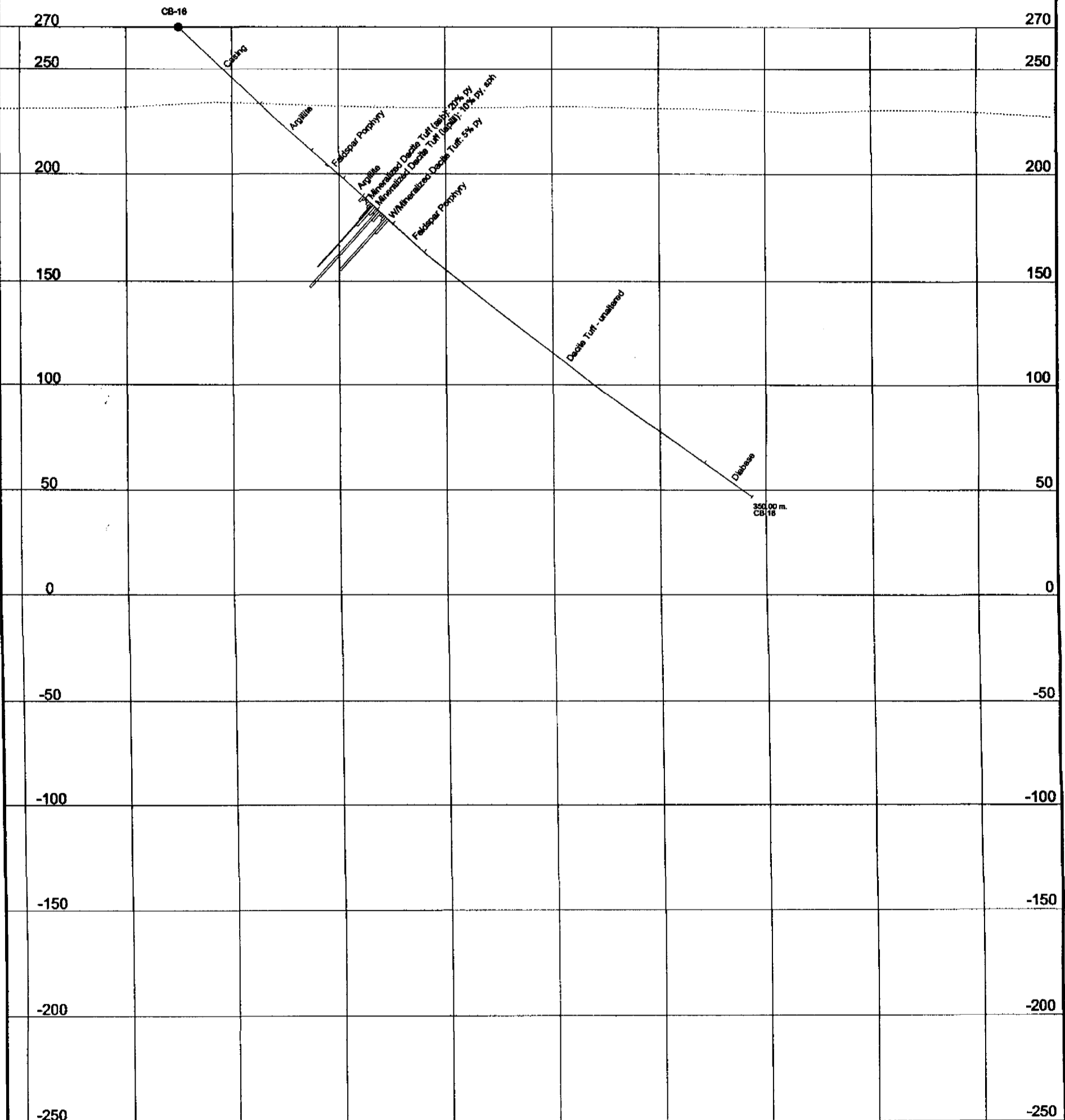
10200N

10250N

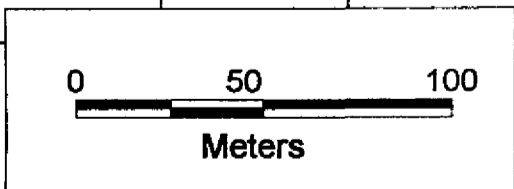
10300N

139+00E

Azimuth: 360° Claim: 1198869  
Dip: -45



Bar Scale: 1 cm = 1.0g Au  
(upper cut-off @ 5.0g Au)



42A07NE2018 2.23451 CURRIE

220

### Currie - Bowman Option

### Grindstone Creek Showing Section 139E

9850N

9900N

9950N

10000N

10050N

10100N

9850N

9900N

9950N

10000N

10050N

10100N

10150N

10200N

10250N

10300N

137+00E

Azimuth: 360° Claim: 1198869  
Dip: -45

270

CB-15

270

250

250

200

200

150

150

100

100

50

50

0

0

-50

-50

-100

-100

-150

-150

-200

-200

-250

-250

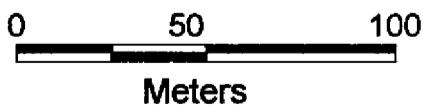
Bar Scale: 1 cm = 1.0g Au  
(upper cut-off @ 5.0g Au)



42A07NE2018 2.23451

CURRIE

230



**Currie - Bowman  
Option**

**Grindstone Creek Showing  
Section 137E**

9850N

9900N

9950N

10000N

10050N

10100N

9850N

9900N

9950N

10000N

10050N

10100N

10150N

10200N

10250N

10300N

135+00E

Azimuth: 360°  
Dip: -45

Claim: 1198869

270

CB-14

270

250

250

200

200

150

150

100

100

50

50

0

0

-50

-50

-100

-100

-150

-150

-200

-200

-250

-250

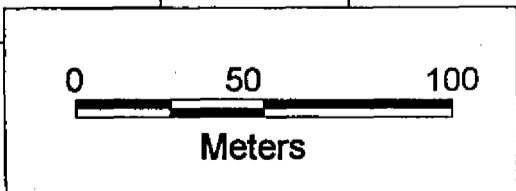
Bar Scale: 1 cm = 1.0g Au  
(upper cut-off @ 5.0g Au)



42A07NE2018 2.23451

CURRIE

240



**Currie - Bowman  
Option**

**Grindstone Creek Showing  
Section 135E**

9850N

9900N

9950N

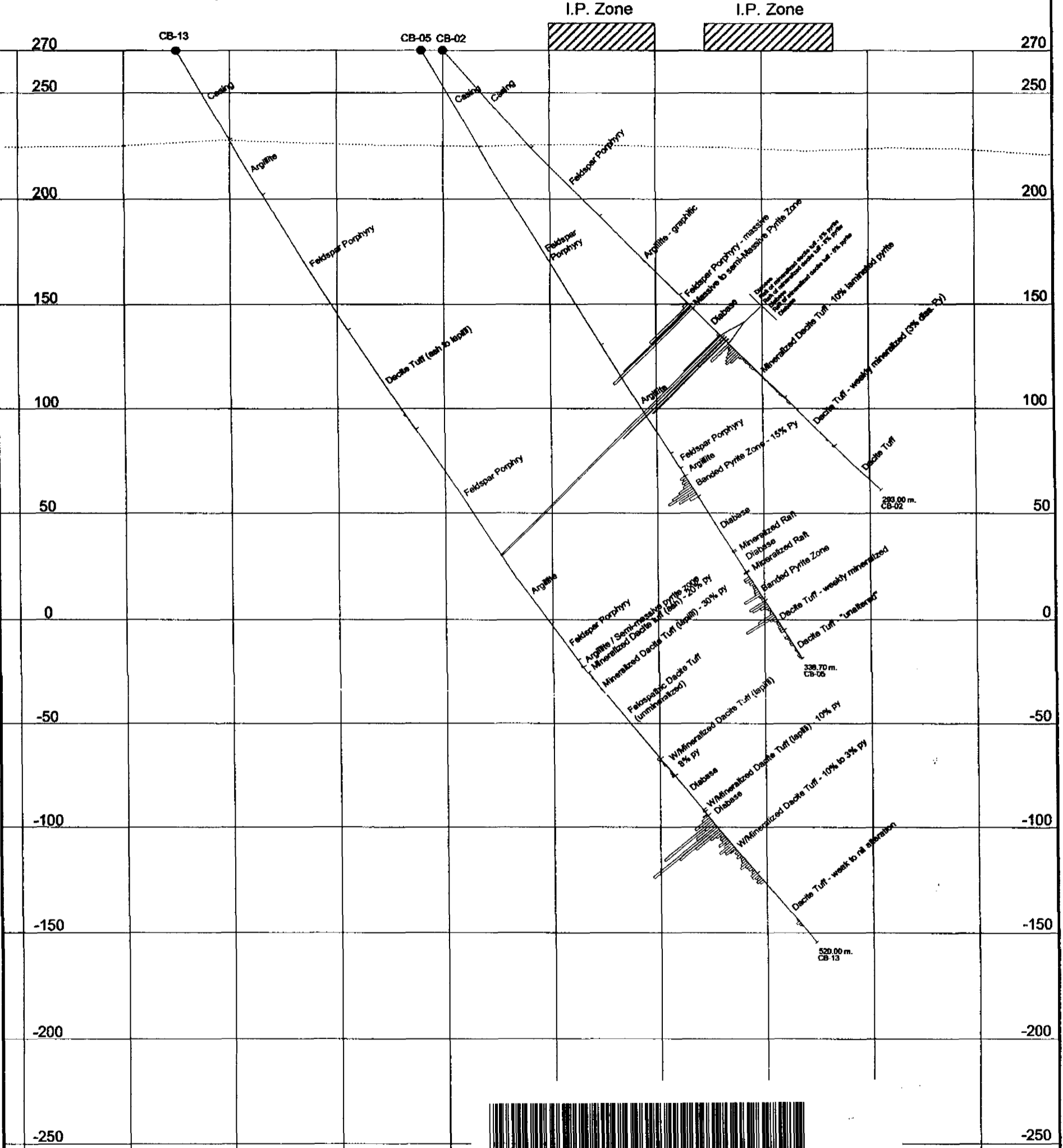
10000N

10050N

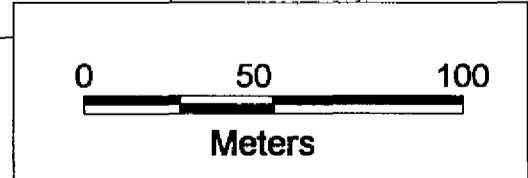
10100N

9850N 9900N 9950N 10000N 10050N 10100N 10150N 10200N 10250N 10300N

130+00E Azimuth: 360° Claim: 1198869  
Dip: -60°



Bar Scale: 1 cm = 1.0g Au  
(upper cut-off @ 5.0g Au)



**Currie - Bowman  
Option**  
**Grindstone Creek Showing  
Section 130E**

9850N 9900N 9950N 10000N 10050N 10100N