

42A07NW0008 25 MACKLEM

010

DIAMOND DRILLING

TOWNSHIP: Macklem

REPORT No.: 25

WORK PERFORMED BY: Dome Exploration Ltd.

<u>CLAIM No.</u>	<u>HOLE No.</u>	<u>FOOTAGE</u>	<u>DATE</u>	<u>NOTE</u>
P 583612	177-1	417	July/83	(1)
P 583225	177-2	317	July/83	(1)
P 583612	177-3	207	July/83	(1)
P 583218	177-5	385	Aug/83	(1)
P 583220-1	177-6	877	July/83	(1)
P 583221	177-7	585	July/83	(1)
P 583223	177-8	762	July/83	(1)
P 583244-5	177-9	437	Aug/83	(2)
P 583225	177-10	284	Aug/83	(2)
P 583244-5	177-11	304	Aug/83	(2)
P 583244				
583613	177-12	254	Aug/83	(2)
P 583224-5	177-13	214	Aug/83	(2)
P 583225	177-14	374	Aug/83	(2)
P 583225	177-15	203	Aug/83	(2)
P 583220				
583225	177-16	304	Aug/83	(2)
P 583224-5	177-17	615	Aug/83	(2)

1600h.

6539

NOTES: (1) #221-83
(2) #320-84

DOME EXPLORATION (CANADA) LIMITED

FOOTAGE		DESCRIPTION	SAMPLE				Au	Ag	Cu %	Zn %		
from	to		No.	from	to	Length						
0.0	14.0	CASING AND OVERBURDEN										
14.0	84.0	CARBONATIZED MAFIC AGGLOMERATE: Pale green, highly carbonatized, 30% clasts ranging from 2 cm to greater than 10 cm. Both clasts and fine-grained matrix speckled throughout with anhedral green amphibole blebs. Effervesces slightly to moderately when HCl is applied. Short massive basaltic sections locally. Occasional large coarse-grained carbonate blebs.										
		63.0-64.0: Brown, oxidized iron carbonate. Massive, quite soft, minor quartz veining.	60466	63.0	64.0	1.0						
84.0	91.1	IRON CARBONATE: Buff coloured, massive with numerous fractures. Small abundant breccia clasts locally. Staining indicates ankerite, major carbonate component although effervescing does occur. Upper portion highly oxidized.										
		84.0-86.9: Highly oxidized, brown, some carbonate veining.	60467	84.0	86.9	2.9						
		86.9-91.1: Minor quartz and carbonate veining.	60468	86.9	91.1	4.2						

LOCATION: Base Line 0: 27+70N. From collar
280'N & 260'E to Post 1, Claim P.583612
AZIMUTH: Grid South (140°T)

DIAMOND DRILL RECORD

HOLE No
177-1

PROPERTY: PROJECT 177 - Macklem and
Thomas Townships, Ontario

DIP: -45°

LENGTH: 417'

ELEVATION:

CLAIM No: P.583612

STARTED: July 8, 1983

CORE SIZE: AQ

SYSTEM OF MEASURE: IMPERIAL

SECTION:

COMPLETED: July 12, 1983

DIP TESTS (CORRECTED): at 400', 30°00'

LOGGED BY: B. Cole

PURPOSE: CROSS SECTION

DATE LOGGED: July 14-15, 1983

DOME EXPLORATION (CANADA) LIMITED
DIAMOND DRILL RECORD

WOLE NO: 177-1
PAGE NO: 2 of 4

FOOTAGE		DESCRIPTION	SAMPLE				Au	Ag	Cu %	Zn %		
from	to		NO	from	to	Length						
91.1	157.0	CARBONATIZED MAFIC-INTERMEDIATE LAPILLI-TUFF: Pale green to yellow-green. 25% lithic clasts ranging from 5 mm to 30 mm in fine-grained matrix. Numerous small clasts replaced by carbonate, abundant small blebs of amphibole, occasional anhedral large carbonate blebs.										
		94.4-95.5: Iron carbonate; similar to 84-86.	60469	94.4	95.5	1.1						
		133.0-134.1: 15% interlaced quartz veining.	60470	133.0	134.1	1.1						
		155.0-157.0: Very highly carbonatized, 15% randomly orientated white and grey quartz veining.	60471	155.0	157.0	2.0						
157.0	199.6	IRON CARBONATE: Buff to greenish buff, brecciated to lapilli-tuff appearance, ankerite major carbonate component although will effervesce when HCl applied. Generally quite siliceous, 10%-15% thin quartz veins at 45°-80°. Some stringers of epidote, also apple-green alteration, fuschite?.										
		157.0-161.8: 10%-15% quartz veining.	60472	157.0	161.8	4.8						
		161.8-162.8: 7" wide, white, barren, massive quartz vein.	60473	161.8	162.8	1.0						
		162.8-185.6: 10%-15% quartz veining, minor finely disseminated pyrite locally.	60474	162.8	167.0	4.2						
			60475	167.0	172.0	5.0						
			60476	172.0	177.0	5.0						
			60477	177.0	182.0	5.0						
			60478	182.0	185.6	3.6						
		185.6-186.6: 5% very finely disseminated pyrite. Numerous breccia fragments.	60479	185.6	186.6	1.0						

DOME EXPLORATION (CANADA) LIMITED

FOOTAGE		DESCRIPTION	SAMPLE				Au dwt/ton	Ag	Cu %	Zn %		
from	to		No.	from	to	Length						
0.0	12.0	CASING AND OVERBURDEN										
12.0	182.1	CARBONATIZED MAFIC VOLCANIC: Pale green, massive to crudely foliated at 20°, 15% small lenticular green amphibole blebs in fine-grained matrix, 10% small spheroidal, highly siliceous blebs (2 mm to 10 mm in diameter). Possibly spherulites or variolites. Occasional carbonate and quartz blebs and stringers.										
		203.4-204.4: 15% quartz-carbonate veining.	60495	203.4	204.4	1.0						
		113.6-140.5: 10%-15% quartz-carbonate veining. Randomly orientated. Very highly carbonatized locally. Slightly brecciated.	60496	113.6	118.4	4.8						
			60497	118.4	123.2	4.8						
			60498	123.2	128.8	5.6						
			60499	128.8	133.5	4.7						
			60500	133.5	137.0	3.5						
			60351	137.0	140.5	3.5						
		140.5-160.9: Breccia Zone: Highly fractured siliceous, chloritic mafic volcanic with 15%-30% interlaced quartz-carbonate veining. Minor medium grained euhedral pyrite locally.	60352	140.5	144.5	4.0						
			60353	144.5	150.0	5.5						
			60354	150.5	154.5	4.0						
			60355	154.5	158.3	3.8						
			60356	158.3	160.9	2.6						
		160.9-167.7: Iron carbonate; brecciated. Ankerite major carbonate component siliceous, 30% quartz-	60357	160.9	164.7	3.8						
			60358	164.7	167.7	3.0						

LOCATION: 26+75N, 6+60E. From collar
955'N & 520'E to Post 1, claim P.583225
AZIMUTH: Grid North (320°T)

DIAMOND DRILL RECORD

HOLE No
177-2

PROPERTY: PROJECT 177 - Macklem and
Thomas Townships, Ontario

DIP: -45° LENGTH: 317' ELEVATION: CLAIM No: P.583225

STARTED: July 13, 1983 CORE SIZE: A0 SYSTEM OF MEASURE: IMPERIAL SECTION:

COMPLETED: July 14, 1983 DIP TESTS (CORRECTED): At 317' 39°30' LOGGED BY: B. Cole

PURPOSE: CROSS SECTION DATE LOGGED: July 17, 1983

DOMEXPLORATION (CANADA) LIMITED
DIAMOND DRILL RECORD

HCLE No: 177-2
PAGE No: 2 of 3

FOOTAGE		DESCRIPTION	SAMPLE				Au	Ag	Cu %	Zn %		
from	to		No	from	to	Length						
		carbonate veining.										
		167.7-174.4: Breccia Zone, similar to 140-160, Oxidized sections locally.	60359	167.7	170.2	2.5						
			60360	170.2	174.4	4.2						
		174.4-175.9: Similar to 140-160. 70% clear quartz-carbonate veining.	60361	174.4	175.9	1.5						
		175.9-182.1: Similar to 140-160. 50% quartz-carbonate veining.	60362	175.9	178.5	3.4						
			60363	178.5	182.1	3.6						
182.1	248.7	IRON CARBONATE: Buff to slightly greenish buff. Massive although highly brecciated. Siliceous. 30%-60% quartz-carbonate veining. 1% very finely disseminated pyrite.										
		182.1-202.2: 30%-50% irregular quartz-carbonate veining.	60364	182.1	187.0	4.9						
			60365	187.0	192.0	5.0						
			60366	192.0	197.0	5.0						
			60367	197.0	202.2	5.2						
		202.2-203.1: Massive, white, quartz-carbonate vein	60368	202.2	203.1	0.9						
		203.1-220.7: 30%-60% irregular quartz-carbonate veining. Minor tourmaline?	60369	203.1	207.0	3.9						
			60370	207.0	211.6	4.6						
			60371	211.6	216.1	4.5						
			60372	216.1	220.7	4.6						
		220.7-248.7: 15%-30% irregular quartz-carbonate 1%-2% very fine blebs and disseminations of pyrite.	60373	220.7	225.5	4.8						
			60374	225.5	230.5	5.0						
			60375	230.5	235.3	4.8						
			60376	235.3	239.7	4.6						
			60377	239.7	244.2	4.5						
			60378	244.2	248.7	4.5						

DOME EXPLORATION (CANADA) LIMITED

FOOTAGE		DESCRIPTION	SAMPLE				Au dwt/ton	Ag	Cu %	Zn %		
from	to		No.	from	to	Length						
0.0	10.0	CASING										
10.0	58.1	BRECCIA ZONE: Predominantly highly fractured and carbonatized mafic volcanic with very numerous large to small clasts of iron carbonate. Pale green to buff in colour. Numerous randomly orientated veins of quartz-carbonate. Minor weathered, vuggy, oxidized sections. Rare pyrite bleb. Blocky locally.										
		10.0-58.1: 5X-15% quartz-carbonate veining.	60379	10.0	17.0	7.0						
		Some ground portions. 1% granular pyrite stringers between 37.0 and 39.0.	60380	17.0	21.8	4.8						
			60381	21.8	26.5	4.7						
			60382	26.5	30.9	4.4						
			60383	30.9	36.0	5.1						
			60384	36.0	40.8	4.8						
			60385	40.8	45.6	4.8						
			60386	45.6	50.4	4.8						
			60387	50.4	54.5	4.1						
			60388	54.5	58.1	3.6						
58.1	86.2	IRON CARBONATE: Buff to greenish buff, massive, ankerite predominant carbonate component. Siliceous. Hint of foliation running parallel with the core axis. Some sections with 10% disseminated black spots (manganese oxide?) Occasional quartz-carbonate vein.										

LOCATION: 27+75N, 2+25E. From collar
120°N & 100°E to Post 1, claim P.583612
AZIMUTH:

DIAMOND DRILL RECORD

HOLE No
177-3

PROPERTY: PROJECT 177 - Macklem and
Thomas Townships, Ontario

CLAIM No: P.583612

DIP: -90° LENGTH: 207' ELEVATION:

STARTED: July 14, 1983 CORE SIZE: AQ SYSTEM OF MEASURE: IMPERIAL SECTION:

COMPLETED: July 15, 1983 DIP TESTS (CORRECTED): at 207' 86°00' LOGGED BY: B. Cole

PURPOSE: CROSS SECTION DATE LOGGED: July 19, 1983

DOM E EXPLORATION (CANADA) LIMITED
DIAMOND DRILL RECORD

WGLE NO: 177-3
 PAGE NO: 3 of 3

FOOTAGE		DESCRIPTION	SAMPLE				Au	Ag	Cu %	Zn %			
from	to		Nº	from	to	Length							
		Core stored at the Dome Mine, South Porcupine, Ontario.											

Brian Cook

DOME EXPLORATION (CANADA) LIMITED

LOCATION: 4+50N, 23+60E. From collar 690'S & 270'E to Post 2, Claim P.583218		DIAMOND DRILL RECORD	HOLE No 177-5	
AZIMUTH: 230°			PROPERTY: PROJECT 177 - Macklem and Thomas Townships, Ontario	
DIP: -45°	LENGTH: 385'	ELEVATION:	CLAIM No: P.583218	
STARTED: August 3, 1983	CORE SIZE: AQ	SYSTEM OF MEASURE: IMPERIAL	SECTION:	
COMPLETED: August 5, 1983	DIP TESTS (CORRECTED): at 250', 46°00' at 385', 41°30'		LOGGED BY: B. Cole	
PURPOSE: CROSS SECTION			DATE LOGGED: August 6, 1983	

FOOTAGE		DESCRIPTION	SAMPLE				Au dwt/ton	Ag	Cu %	Zn %		
from	to		No.	from	to	Length						
0.0	12.0	CASING AND OVERBURDEN										
12.0	185.5	CARBONATIZED MAFIC TUFF: Pale green to grey. Fine to medium grained. Predominantly feldspathic with lesser amphibolitic, blebby to lenticular clasts. Moderately well-developed foliation at 50°-60° to the core axis. Numerous blebs and veins of quartz-carbonate. Several thin intercalations of very fine-grained ash-tuff as well as several units of lithic lapilli-tuff ranging from 1' to 6' in width. 20% amphibolite and highly carbonatized angular and lenticular clasts (up to 40 mm in diameter) in fine grained moderately siliceous matrix.										
		20.8-23.4: 40% blebby quartz-carbonate.	60556	20.8	23.4	2.6						
		28.8-29.7: 75% irregular quartz-carbonate veining.	60557	28.8	29.7	0.9						
		62.7-63.9: 80% massive quartz-carbonate veining.	60558	62.7	63.9	1.2						
		99.0-100.6: 25% quartz-carbonate blebs.	60559	99.0	100.6	1.6						
		107.5-109.6: 15% small spherical quartz-carbonate blebs.	60560	107.5	109.6	2.1						
		143.2-145.1: 20% quartz-carbonate veining in lapilli-tuff.	60561	143.2	145.1	1.9						

DOME EXPLORATION (CANADA) LIMITED
DIAMOND DRILL RECORD

HOLE NO: 177-5
PAGE NO: 2 of 3

FOOTAGE from	to	DESCRIPTION	SAMPLE				Au dwt/ton	Ag	Cu %	Zn %		
			NO	from	to	Length						
		175.4-182.2: Similar to 143.2-145.1	60562	175.4	179.2	3.8						
			60563	179.2	182.2	3.0						
185.5	192.1	BASALT: Dark green, fine-grained, massive, quite chloritic, minor quartz-carbonate veining.										
192.1	289.2	MAFIC TUFF: Similar to 12-185 although only slightly carbonatized. Foliation at 40°. Short massive sections. Possibly flows.										
		211.5-213.8: 15% quartz-carbonate veining.	60564	211.5	213.8	2.3						
289.2	330.7	BASALT: Dark green. Medium to fine-grained. Massive, some white feldspar phenocrysts locally. Minor quartz-carbonate veining, generally at 40°.										
		309.7-311.1: 20% irregular quartz-carbonate veining.	60565	309.7	311.1	1.4						
		315.1-316.0: 4" wide massive quartz-carbonate vein Trace pyrite.	60566	315.1	316.0	0.9						
330.7	377.2	MAFIC TUFF (?): Similar to 190-289. Very weak foliation at 50° to massive. Possibly mafic flows.										
		337.9-339.2: 30% swirling quartz-carbonate veins.	60567	337.9	339.2	1.3						
		367.6-369.2: 30% quartz-carbonate. 10% disseminated pyrite locally.	60568	367.6	369.2	1.6						
		369.2-370.1: 3" wide massive quartz-carbonate vein	60569	369.2	370.1	0.9						
377.2	379.0	FELSIC DYKE: Light grey, massive, moderately siliceous. 10% very finely disseminated pyrite. 15% very small phenocrysts of feldspar in fine-grained matrix.	60570	377.2	379.0	1.8						

DOME EXPLORATION (CANADA) LIMITED
DIAMOND DRILL RECORD

HOLE NO: 177-5
PAGE NO: 3 of 3

FOOTAGE		DESCRIPTION	SAMPLE				Au	Ag	Cu	Zn			
from	to		NO	from	to	Length	dwt/ton	%	%	%	%		
379.0	385.0	MAFIC TUFF(?): Similar to 330-377.											
	385.0	END OF HOLE											
		Casing pulled											
		Core checked for fluorescence and radioactivity. Nothing of interest.											
		Drilling by Morisette Diamond Drilling Limited Halleybury, Ontario											
		Core stored at the Dome Mine, South Porcupine, Ont.											

Brian Cole

DOME EXPLORATION (CANADA) LIMITED
DIAMOND DRILL RECORD

FILE NO: 177-6

PAGE NO: 3 of 3

FOOTAGE from	to	DESCRIPTION	SAMPLE				Au	Ag	Cu %	Zn %		
			NO	from	to	Length						
697.4	766.4	INTERMEDIATE-FELSIC TUFF: Similar to 673-688,										
		708.7-714.8: 5% - 10% quartz veining, minor pyrite Representative sample.	60512	708.7	713.7	5.0						
		718.2-723.3: Similar to 708-714.	60513	718.2	723.3	5.1						
		751.3-753.5: Massive, fine-grained, siliceous.										
		765.2-766.4: Similar to 751-753.										
766.4	877.0	KOMATIITIC FLOW: Black green, massive to weakly foliated at 55°. Generally fine-grained. Soft, Carbonatized. Chloritic, very slightly talcose locally. Slightly to moderately magnetic. Numer- ous small blebs and thin stringers of carbonate. Some irregular quartz-carbonate veining. Generally blocky.										
		766.4-787.5: 10%-20% irregular quartz-carbonate veining. Quite blocky, minor pyrite.	60514	766.4	771.0	4.6						
			60515	771.0	777.0	6.0						
			60516	777.0	782.0	5.0						
			60517	782.0	787.5	5.5						
		875.0-877.0: Quite highly talcose.										
877.0		HOLE ABANDONED: Rods broke at 347'. Unable To tap.										
		Casing left in hole at Morissette's request. Drilling by Morissette Diamond Drilling Limited Halleybury, Ontario										
		Core checked for fluorescence and radioactivity; nothing of interest.										
		Core stored at the Dome Mine, South Porcupine, Ont.										

Brian Cook

DOME EXPLORATION (CANADA) LIMITED

FOOTAGE		DESCRIPTION	SAMPLE				Au	Ag	Cu %	Zn %		
from	to		No.	from	to	Length						
0.0	22.0	CASING AND OVERBURDEN										
22.0	247.8	CARBONATIZED MAFIC TUFF: Pale green to green. Highly carbonatized. 40%-60% feldspathic and amphibolitic lenticular clasts (up to 5 mm in diameter) in fine-grained, generally chloritic matrix. Moderately well-developed foliation at 40°-50° to the core axis. Some quartz-carbonate veining as well as large, angular carbonate blebs. Occasional short, red-brown oxidized section. Some chloritic, massive flows up to 4' in width occur occasionally.										
		118.0-119.0: 70% quartz-carbonate veining.	60518	118.0	119.0	1.0						
		125.0-127.0: 15% irregular quartz-carbonate veining with minor tourmaline (?)	60519	125.0	127.0	2.0						
		146.8-147.9: 80% massive quartz-carbonate.	60520	146.8	147.9	1.1						
		161.4-166.0: 20% small irregular quartz-carbonate blebs.	60521	161.4	166.0	4.6						
		188.1-192.7: 20% quartz-carbonate veining. Minor pyrite.	60522	188.1	192.7	4.6						
		190.3-192.6: 20% irregular quartz-carbonate vein-	60523	190.3	192.6	2.3						

LOCATION: 19+50N, 14+80E. From collar
130'N & 625'E to Post 1, claim P.583221
AZIMUTH: 187° (T)

DIAMOND DRILL RECORD

HOLE No
177-7

PROPERTY: PROJECT 177 - Macklem and
Thomas Townships, Ontario

DIP: -45° LENGTH: 585' ELEVATION: CLAIM No: P.533221

STARTED: July 24, 1983 CORE SIZE: AQ SYSTEM OF MEASURE: Imperial SECTION:

COMPLETED: July 26, 1983 DIP TESTS (CORRECTED): At 250': 41°30' LOGGED BY: R. Cole
At 450': 32°00'

PURPOSE: CROSS SECTION At 585': 25°00' DATE LOGGED: July 27-28, 1983

DOME EXPLORATION (CANADA) LIMITED

LOCATION: 26+80N, 22+60E. From collar		DIAMOND DRILL RECORD		HOLE No	
930'S & 510'E to Post 2, Claim P.583220				177-8	
AZIMUTH: 187° (T)		PROPERTY: PROJECT 177 - Macklem and Thomas Townships, Ontario		CLAIM No: P.583220	
DIP:	-45°	LENGTH:	762'	ELEVATION:	
STARTED:	July 27, 1983	CORE SIZE:	AQ	SYSTEM OF MEASURE:	IMPERIAL
COMPLETED:	August 2, 1983	DIP TESTS (CORRECTED):	at 257' 53°00'	LOGGED BY:	E. Cole
			at 550' 42°30'		
PURPOSE:	CROSS SECTION		at 762'	DATE LOGGED:	August 1 - 3, 1983

FOOTAGE from	to	DESCRIPTION	SAMPLE				Au	Ag	Cu %	Zn %		
			No.	from	to	Length						
0.0	120.0	CASING AND OVERBURDEN										
120.0	270.5	MAFIC VOLCANICS: Dark green, fine-grained, massive to well-developed foliations at 40° to the core axis. Alternating units of tuffs and flows. Quite chloritic. Slightly fractured. Numerous blebs and veining of quartz-carbonate. Rare pyrite. Slightly carbonatized locally.										
		127.0-128.2: 10%-15% quartz-carbonate blebs and veining. 3% disseminated pyrite.	60527	127.0	128.2	1.2						
		128.2-135.1: 15%-20% quartz-carbonate blebs and veining. Minor localized pyrite.	60528	128.2	132.2	4.0						
			60529	132.2	135.1	2.9						
		138.9-143.9: Similar to 128-135.	60530	138.9	143.9	5.0						
		153.3-154.7: 30% quartz-carbonate veining.	60531	153.3	154.7	1.4						
		161.3-162.4: 75% quartz-carbonate veining.	60532	161.3	162.4	1.1						
		211.0-214.0: Grind.										
		214.0-216.0: Quite talcose.										
		232.2-235.6: 15% quartz-carbonate veining.	60533	232.0	235.6	3.6						

DOME EXPLORATION (CANADA) LIMITED
DIAMOND DRILL RECORD

HKLE NO: 177-8
PAGE NO: 2 of 4

FOOTAGE		DESCRIPTION	SAMPLE				Au	Ag	Cu %	Zn %		
from	to		№	from	to	Length						
		243.3-258.7: Variolitic Flow; 10%-25% small, white spheroids of quartz-carbonate and feldspathic material. (up to 10 mm in diameter).										
		265.3-268.8: 15% quartz-carbonate veining.	60534	265.3	268.8	3.5						
		269.3-270.5: 75% quartz-carbonate veining.	60535	269.3	270.5	1.2						
270.5	274.6	FELSIC DYKE: Purplish grey. Fine-grained, massive moderately siliceous. 15% anhedral amphibolite blebs. 3% disseminated sub to euhedral pyrite. Contacts at 80°.										
274.6	283.8	MAFIC VOLCANIC: Similar to 120-270. Blocky. Some grind.										
283.8	528.5	ULTRAMAFIC VOLCANIC: Very dark grey, soft. Fine to medium-grained. Generally massive to foliated at 50°. Abundant carbonate. Moderately to highly talcose. Extremely blocky. Some thin, intercalated mafic units. Very weakly magnetic.										
		294.0-297.0: Grind.										
		299.8-300.8: 25% quartz-carbonate veining.	60536	299.8	300.8	1.0						
		302.7-303.8: 75% quartz-carbonate veining.	60537	302.7	303.8	1.1						
		321.3-325.0: 30% carbonate and quartz-carbonate blebs and veins.	60538	321.3	325.0	3.7						
		381.4-382.2: 3" wide massive quartz-carbonate vein	60539	381.4	382.2	0.8						
		395.0-396.0: Similar to 381-382.	60540	395.0	396.0	1.0						

DOME EXPLORATION (CANADA) LIMITED
DIAMOND DRILL RECORD

HO.E No: 177-8
PAGE No: 3 of 4

FOOTAGE from	to	DESCRIPTION	SAMPLE				Au	Ag	Cu %	Zn %		
			No	from	to	Length						
		430.5-433.0: 75% carbonate and quartz-carbonate veining.	60541	430.5	433.0	2.5						
		449.4-450.7: 80% quartz-carbonate veining.	60542	449.4	450.7	1.3						
		492.4-503.8: Slight purplish-red colouration (hematized?). Slightly siliceous although still talcose. 5% quartz-carbonate veining.										
		503.8-515.6: 15%-25% quartz-carbonate veining. Chloritic.	60543	503.8	508.3	4.5						
			60544	508.3	511.0	2.7						
			60545	511.0	515.6	4.6						
		515.6-528.5: Chloritic, locally talcose, transitional contact.										
528.5	608.6	VARIOLITIC MAFIC FLOW: Green, chloritic, fine-grained, massive to very weakly foliated at 55°, 10% small amphibolite blebs. 15% to 30% spheroidal variolites of quartz, carbonate and feldspathic material. (up to 20 mm in diameter although generally 3 mm - 5 mm). Generally 5% quartz-carbonate veining.										
		535.2-536.2: 20% quartz-carbonate veining.	60546	535.2	536.2	1.0						
		546.0-547.0: 30% quartz-carbonate veining.	60547	546.0	547.0	1.0						
		575.3-578.0: 75% quartz-carbonate veining.	60548	575.3	578.0	2.7						
		579.2-582.2: Similar to 575-578.	60549	579.2	582.2	3.0						
		590.0-590.7: 80% quartz-carbonate veining.	60550	590.0	590.7	0.7						

DOME EXPLORATION (CANADA) LIMITED
DIAMOND DRILL RECORD

HOLE No: 177-8
PAGE No: 4 of 4

FOOTAGE from	to	DESCRIPTION	SAMPLE				Au	Ag	Cu %	Zn %		
			NO	from	to	Length						
608.6	762.0	KOMATIITIC FLOW: Dark grey, soft, massive to weakly foliated at 50°. Medium to fine-grained. Very abundant carbonate. Generally slightly talcose. 5% quartz-carbonate veining. Weakly magnetic. Numerous intercalations of variolitic flow in upper portion. Locally blocky. Some grind.										
		612.3-613.5: 40% quartz-carbonate veining.	60551	612.3	613.5	1.2						
		634.9-636.3: 20% quartz-carbonate veining.	60552	634.9	636.3	1.4						
		682.0-689.9: Numerous intercalations of yellow-green. Felsic tuff. Foliation at 43°.										
		731.5-732.5: 6" wide vein of massive quartz-carbonate.	60553	731.5	732.5	1.0						
		744.7-746.4: 75% quartz-carbonate veining.	60554	744.7	746.4	1.7						
		750.6-753.1: 15% quartz-carbonate veining.	60555	750.6	753.1	2.5						
		755.0-757.0: Grind										
762.0		END OF HOLE										
		Casing										
		Core checked for fluorescence and radioactivity. Nothing of interest.										
		Core stored at Dome Mine, South Porcupine, Ontario										
		Drilling by N. Morissette Diamond Drilling Limited Haileybury, Ontario										

Brian Cole

W.R.
#320/84

Macklem Twp and Thomas Twp.
The Mining Act

Name and Postal Address of Recorded Holder DOMEX EXPLORATION (CANADA) LIMITED	Prospector's Licence No. A.21304
---	--

P.O. Box 270, 1 First Canadian Place, Toronto, Ontario M5X 1H1

Total Work Days Cr. claimed 3369	Mining Claim		Work Days Cr.	Mining Claim		Work Days Cr.	Mining Claim		Work Days Cr.
	Prefix	Number		Prefix	Number		Prefix	Number	
for Performance of the following work. (Check one only)			SEE ATTACHED SCHEDULE						
<input type="checkbox"/> Manual Work									
<input type="checkbox"/> Shaft Sinking Drifting or other Lateral Work.									
<input type="checkbox"/> Compressed Air, other Power driven or mechanical equip.									
<input type="checkbox"/> Power Stripping									
<input checked="" type="checkbox"/> Diamond or other Core drilling									
<input type="checkbox"/> Land Survey									

ONTARIO GEOLOGICAL SURVEY
ASST. DIR. OF MINING
TORONTO OFFICE
3 1984
RECEIVED

All the work was performed on Mining Claim(s): **P.583220, P.583224, P.583225, P.583613, P.583624**

Required Information eg: type of equipment, Names, Addresses, etc. (See Table Below)

HOLE NO.	LENGTH	DATES
177-4	380'	September 2-3, 1983
177-9	437'	August 7-11, 1983
177-10	284'	August 12-13, 1983
177-11	304'	August 15-16, 1983
177-12	254'	August 17-18, 1983
177-13	214'	August 18-19, 1983
177-14	374'	August 19-23, 1983
177-15	203'	August 23-24, 1983
177-16	304'	August 24-26, 1983
177-17	615'	August 26-31, 1983

RECORDED
AUG - 9 1984
Receipt No. *JD*

PORCUPINE MINING DIVISION
RECEIVED
AUG - 9 1984
A.M. P.M.
7 8 9 10 11 12 1 2 3 4 5 6

All core is AQ

Drilling by N. Morissette Diamond Drilling
Haileybury, Ontario

Date of Report August 3, 1984	Recorded Holder or Agent (Signature) <i>E. A. Figulski</i>
---	---

Certification Verifying Report of Work
I hereby certify that I have a personal and intimate knowledge of the facts set forth in the Report of Work annexed hereto, having performed the work or witnessed same during and/or after its completion and the annexed report is true.

Name and Postal Address of Person Certifying
L. B. Halladay, P.O. Box 270, 1 First Canadian Place, Toronto, Ontario M5X 1H1

Date Certified August 3, 1984	Certified by (Signature) <i>L. B. Halladay</i>
---	---

Type of Work	Specific information per type	Other information (Common to 2 or more types)	Attachments
Manual Work	Nil	Names and addresses of men who performed manual work/operated equipment, together with dates and hours of employment.	Work Sketch: these are required to show the location and extent of work in relation to the nearest claim post.
Shaft Sinking, Drifting or other Lateral Work			
Compressed air, other power driven or mechanical equip.	Type of equipment	Names and addresses of owner or operator together with dates when drilling/stripping done.	
Power Stripping	Type of equipment and amount expended. Note: Proof of actual cost must be submitted within 30 days of recording.		
Diamond or other core drilling	Signed core log showing; footage, diameter of core, number and angles of holes.	Nil	Work Sketch (as above) in duplicate
Land Survey	Name and address of Ontario land surveyor.		Nil

PROJECT 177

SCHEDULE OF CLAIMS

<u>Claim No.</u>	<u>Work Days Credit</u>	<u>Claim No.</u>	<u>Work Days Credit</u>
P.530310	60	P.583617	40
P.530311	60	P.583618	100
		P.583619	100
P.583207	100		
P.583208	100	P.583624	100
P.583209	100	P.583625	100
P.583210	100		
P.583211	70	P.583641	100
P.583212	60	P.583642	100
P.583215	60	P.583797	60
P.583216	60	P.583798	60
P.583217	60	P.583799	60
P.583218	60		
P.583219	60	P.583801	60
P.583220	60	P.583802	60
P.583221	60	P.583803	60
P.583222	60		
P.583223	60	P.583806	60
P.583224	60	P.583807	60
P.583225	60	P.583808	60
		P.583809	60
P.583611	60		
P.583612	60	P.583811	59
P.583613	60		
P.583614	60	P.583813	60
P.583615	60		
		P.749781	200
		P.749782	200

3369.0

DOME EXPLORATION (CANADA) LIMITED
DIAMOND DRILL RECORD

HOLE No: 177-9
PAGE No: 2 of 4

FOOTAGE from	to	DESCRIPTION	SAMPLE				Au dwt/ton	Ag	Cu %	Zn %		
			Nº	from	to	Length						
		247.0-250.2: 30% clear-white irregular quartz veining.	60573	247.0	250.2	3.2	N11					
		250.2-251.8: Very highly oxidized. Red-brown. 25% very small quartz blebs.	60574	250.2	251.8	1.6	Tr					
		251.8-269.2: 15%-30% irregular quartz-carbonate veining. Minor pyrite locally.	60575	251.8	256.6	4.8	Tr					
			60576	256.6	261.0	4.4	Tr					
			60577	261.0	265.8	4.8	Tr					
			60578	265.8	269.2	3.4	Tr					
		269.2-270.8: 6" wide, white, massive quartz-carbonate vein.	60579	269.2	270.8	0.6	Tr					
		270.8-283.4: Similar to 251-269.	60580	270.8	275.0	4.2	0.10					
			60581	275.0	269.5	4.5	N11					
			60582	269.5	273.9	4.4	N11					
			60583	273.9	278.5	4.6	N11					
			60584	278.5	283.4	4.9	N11					
283.4	288.5	MAFIC VOLCANIC BRECCIA: Green, 25% chloritic. Small, breccia fragments of silicified, fine-grained mafic volcanic. 75% blebby, irregular quartz-carbonate filling fractures. 5% pyrite throughout.	60585	283.4	285.6	2.2	N11					
			60586	285.6	288.5	2.9	N11					
288.5	371.1	IRON CARBONATE: Similar to 247-283. Brecciation not as obvious.										
		288.5-315.4: 15%-50% irregular and blebby quartz-carbonate veining. Minor pyrite locally.	60587	288.5	293.4	4.9	0.10					
			60588	293.4	297.9	4.5	N11					
			60589	297.9	302.5	4.6	0.20					
			60590	302.5	307.0	4.5	0.20					
			60591	307.0	311.2	4.2	Tr					
			60592	311.2	315.4	4.2	Tr					

DOME EXPLORATION (CANADA) LIMITED

LOCATION: 26+75N; 7+60E. From collar 890'N & 450'E to Post 1, claim P.583225 AZIMUTH: GRID NORTH (320°T)	DIAMOND DRILL RECORD	HOLE No 177-10
PROPERTY: PROJECT 177, Macklem and Thomas Townships, Ontario		CLAIM No: P.583225
DIP: -45°	LENGTH: 284'	ELEVATION:
STARTED: August 12, 1983	CORE SIZE: AQ	SYSTEM OF MEASURE: IMPERIAL
COMPLETED: August 13, 1983	DIP TESTS (CORRECTED): at 150' 46°00'	LOGGED BY: B. Cole
	at 284' 37°00'	
PURPOSE: Cross Section	DATE LOGGED: August 13-14, 1983	

FOOTAGE from to		DESCRIPTION	SAMPLE				Au dwt/ton	Ag	Cu %	Zn %		
			No.	from	to	Length						
0.0	22.0	CASING AND OVERBURDEN:										
22.0	157.2	CARBONATIZED MAFIC-INTERMEDIATE TUFF: Pale green, slightly chloritic, carbonatized, primarily tuff with 40% small, lenticular amphibole and white sub-spherical to oblong siliceous clasts (up to 5 mm in diameter) in fine grained matrix. Poorly to moderately well developed foliation at 30° to the core axis. Minor randomly orientated quartz-carbonate veining and blebs. Minor pyrite locally.										
		34.6-35.4: 25% quartz-carbonate veining.	60328	34.6	35.4	0.8	0.10					
		51.4-52.5: 20% quartz-carbonate veining. 5% clustered, anhedral pyrite.	60329	51.4	52.5	1.1	Tr					
		81.8-82.6: 5% localized coarse pyrite in thin, short, elongated quartz bleb.	60330	81.8	82.6	0.8	Tr					
		96.7-97.5: 3/4" wide blue quartz veins with 15% small pyrite blebs. Vein at 90°.	60331	96.7	97.5	0.8	0.20					
		108.5-109.3: 5% small, clustered, anhedral pyrite.	60332	108.5	109.3	0.8	Tr					
		154.0-155.6: 15% highly contorted blue quartz-stringers. 50% of quartz replaced by 30% pyrrhotite and 20% pyrite.	60333	154.0	155.6	1.6	0.10					

DOME EXPLORATION (CANADA) LIMITED
DIAMOND DRILL RECORD

HOLE No: 177-10

PAGE No: 2 of 4

FOOTAGE		DESCRIPTION	SAMPLE				Au dwt/ton	Ag	Cu %	Zn %		
from	to		No	from	to	Length						
		155.6-157.2: Very highly carbonatized. 15% thin quartz-carbonate veining.	60334	155.6	157.2	1.6	N11					
157.2	247.6	IRON CARBONATE: Buff to greenish buff. Massive. Slightly brecciated. Bright green carbonate (?) alteration locally. Minor pyrite. 10%-30% quartz-carbonate veining.										
		157.2-189.6: 15%-30% randomly orientated quartz-carbonate veining. Minor tourmaline (?) with veining locally. Minor pyrite.	60335	157.2	162.2	5.0	Tr					
			60336	162.2	167.0	5.0	N11					
			60337	167.0	171.6	4.6	N11					
			60338	171.6	176.3	4.7	N11					
			60339	176.3	181.1	4.8	Tr					
			60340	181.1	186.0	4.9	N11					
			60341	186.0	189.6	3.6	N11					
		189.6-190.9: Similar to 157-189. 10% disseminated pyrite.	60342	189.6	190.9	1.3	0.10					
		190.9-196.4: Similar to 157-189. 3% pyrite.	60343	190.9	194.0	3.1	Tr					
			60344	194.0	196.4	2.4	0.20					
		196.4-197.3: 8" highly oxidized band. 5% pyrite.	60345	196.4	197.3	0.9	0.20					
		197.3-209.4: Breccia Zone; large, angular fragments (up to 8 cm in diameter) of primarily very highly carbonatized mafic volcanic. Lesser clasts of iron carbonate occur as well. 30% interstitial material, predominantly irregular and blebby quartz-carbonate. 1% finely disseminated pyrite.	60346	197.3	201.6	4.3	Tr					
			60347	201.6	205.2	3.6	Tr					
			60348	205.2	209.4	4.2	Tr					
		209.4-212.3: Similar to 157-189. 5% quartz-carbonate veining.	60349	209.4	212.3	2.9	N11					
		212.3-213.2: Massive, white, barren quartz vein.	60350	212.3	213.2	0.9	N11					

DOME EXPLORATION (CANADA) LIMITED

LOCATION: 26+75N, 5+60E. From collar 120'N & 520'E to Post 1, claim P.583224	DIAMOND DRILL RECORD	HOLE NO 177-11
AZIMUTH: GRID NORTH (320°T)	PROPERTY: PROJECT 177 - Macklem and Thomas Townships	
DIP: -45° LENGTH: 304' ELEVATION:	CLAIM NO: P.583224 - 28' P.583225 - 276'	
STARTED: August 15, 1983 CORE SIZE: AQ SYSTEM OF MEASURE: IMPERIAL	SECTION:	
COMPLETED: August 16, 1983 DIP TESTS (CORRECTED): at 150'; 46°00' at 304'; 43°30'	LOGGED BY: B. Cole	
PURPOSE: CROSS SECTION	DATE LOGGED: August 17, 1983	

FOOTAGE from	to	DESCRIPTION	SAMPLE				Au dwt/ton	Ag	Cu %	Zn %		
			No.	from	to	Length						
0.0	8.0	CASING AND OVERBURDEN										
8.0	176.4	CARBONATIZED MAFIC-INTERMEDIATE TUFF: Pale green, highly carbonatized, 20% small, generally lenticular amphibole clasts and 10% sub-spherical to oblong quartzofeldspathic clasts in fine-grained matrix. Moderately well developed foliation at 30° to the core axis. Numerous small blebs and veins of quartz-carbonate, carbonate, and angular massive clasts of iron carbonate. Some thinly intercalated chloritic, well foliated, very fine-grained sediments, several short, highly oxidized red-brown portions.										
		35.3-36.3: Thin blue quartz vein replaced by 60% coarse subhedral pyrite.	60618	35.3	36.3	1.0	0.10					
		93.2-94.0: Quartz-carbonate vein (?). Medium-grained. Equigranular. 50% quartz, 50% effervescent carbonate.	60619	93.2	94.0	0.8	Tr					
		127.4-128.4: Iron Carbonate; buff, massive, moderate brecciation. 15% quartz-carbonate.	60620	127.4	128.4	1.0	Tr					
		140.5-141.5: 25% quartz-carbonate veining at 15°.	60621	140.5	141.5	1.0	0.20					
		153.5-155.1: 25% irregular quartz-carbonate.	60622	153.5	155.1	1.6	0.60					

DOME EXPLORATION (CANADA) LIMITED

LOCATION: 26+75N, 3+60E. From collar	DIAMOND DRILL RECORD			HOLE No
250'N & 650'E to Post 1, Claim P.583224				177-12
AZIMUTH: GRID NORTH (320°T)	PROPERTY: PROJECT 177, Macklem and Thomas Townships, Ontario		CLAIM No: P.583224 - 177'	
			P.583613 - 77'	
DIP: -45°	LENGTH: 254'	ELEVATION:	SECTION:	
STARTED: August 17, 1983	CORE SIZE: AQ	SYSTEM OF MEASURE: IMPERIAL	LOGGED BY: B. Cole	
COMPLETED: August 18, 1983	DIP TESTS (CORRECTED): at 254' 45°00'		DATE LOGGED: August 18, 1983	
PURPOSE: CROSS SECTION				

FOOTAGE from to		DESCRIPTION	SAMPLE				Au dwt/ton	Ag	Cu %	Zn %		
			No.	from	to	Length						
0.0	8.0	CASING AND OVERBURDEN										
8.0	150.4	CARBONATIZED MAFIC-INTERMEDIATE TUFF: Pale green, slightly chloritic locally. 40% small, blebby to lenticular amphibole and 10% very small, sub-rounded, siliceous and/or feldspathic clasts in fine-grained matrix. Clasts up to 8 mm in diameter. Moderately well-developed foliation at 30° to the core axis. 5%-10% quartz-carobnate and carbonate veining.										
		35.4-37.8: 20% irregular carbonate with lesser quartz-carbonate veining.	60636	35.4	37.8	2.4	Tr					
		52.5-55.8: 50% irregular quartz-carbonate veins. Minor tourmaline (?)	60637	52.5	55.8	3.3	Tr					
		128.5-129.8: Very highly carbonatized. 10% disseminated pyrite.	60638	128.5	129.8	1.3	0.10					
		129.8-131.6: Very highly carbonatized. 25% irregular quartz-carbonate. 15% fine to coarse euhedral disseminated pyrite.	60639	129.8	131.6	1.8	0.10					
		131.6-150.4: Very highly carbonatized. 15% quartz-carbonate veining. Minor pyrite.	60640	131.6	136.2	4.6	Tr					
			60641	136.2	141.3	5.1	Tr					
			60642	141.3	145.3	4.0	Tr					

DOME EXPLORATION (CANADA) LIMITED
DIAMOND DRILL RECORD

HOLE No: 177-12

PAGE No: 2 of 3

FOOTAGE from	to	DESCRIPTION	SAMPLE				Au dwt/ton	Ag	Cu %	Zn %		
			No	from	to	Length						
			60643	145.3	150.4	5.1	Tr					
150.4	166.7	IRON CARBONATE-FELSIC LAPILLI-TUFF (?): Buff to greenish buff. Generally massive with some lapilli-tuff sections. Several short sections with 90% large, lenticular, siliceous, clasts (up to 30 mm across). Long axis of clasts clearly aligned at 30°. Carbonate staining indicates ankerite is major component throughout. Felsic pyroclastic have apparently undergone wholesale ankerization. Slight brecciation, minor quartz-carbonate veining. Trace pyrite.										
		150.4-152.7: Felsic Lapilli-tuff.										
		152.7-166.7: Minor quartz-carbonate veining. Possibly short section of felsic lapilli-tuff.	60644	152.7	157.0	4.3	Tr					
			60645	157.0	162.0	5.0	0.10					
			60646	162.0	166.7	4.7	0.10					
166.7	254.0	CARBONATIZED MAFIC VOLCANIC: Pale green, chloritic locally. Generally massive to very weakly foliated at 35°. 10%-15% small blebs of amphibole in fine-grained groundmass (?). Some portions with 10%-15% spherical to sub-rounded quartzofeldspathic clasts, often with pink-red inclusions. Possibly variolites. Minor quartz-carbonate veining.										
		174.8-176.5: 10% coarse blebs and stringers of pyrite.	60647	174.8	176.5	1.7	0.20					
		181.0-181.9: Similar to 174-176.	60648	181.0	181.9	0.9	0.10					
		214.7-216.0: 1/2" wide quartz-carbonate vein at 15°.	60649	214.7	216.0	1.3						

DOME EXPLORATION (CANADA) LIMITED
DIAMOND DRILL RECORD

HOLE No: 177-14

PAGE No: 2 of 4

FOOTAGE		DESCRIPTION	SAMPLE				Au dwt/ton	Ag	Cu %	Zn %		
from	to		No	from	to	Length						
		136.8-138.4: 10% fine irregular quartz-carbonate with 5% localized subhedral pyrite.	60666	136.8	138.4	1.6	0.20					
		172.8-180.7: Extremely highly carbonatized. Generally massive. Some thin, contorted quartz-carbonate veining with 5% localized pyrite between 177.1-172.1.	60667	177.1	178.1	1.0	0.10					
		180.7-185.8: 80% irregular quartz-carbonate veining. 10% very finely disseminated pyrite. Some bright green carbonate alteration. From appearance of carbonatized mafic xenoliths, quartz-carbonate is replacing rather than fracture filling.	60668	180.7	183.3	2.6	0.10					
			60669	183.3	185.8	2.5	0.10					
185.8	206.3	BRECCIA (IRON FORMATION?): Small, angular black fragments in 75%-80% cherty-quartz with quartz-carbonate. Fragments often have been partially replaced. Very siliceous throughout. 5%-15% very finely disseminated pyrite. Generally moderately magnetic throughout. Unit may represent severely altered iron formation ?? . Some short, highly oxidized, red-brown portions, also weakly magnetic locally.										
		185.8-189.0: 80% quartz and quartz carbonate. 5% pyrite.	60670	185.8	189.0	3.2	0.10					
		189.0-191.4: Highly oxidized, red-brown. 40% quartz-carbonate blebs. 2% pyrite.	60671	189.0	191.4	2.4	0.10					
		191.4-203.7: 75% quartz and quartz-carbonate 10%-15% disseminated pyrite.	60672	191.4	194.0	2.6	0.20					
			60673	194.0	197.0	3.0	0.20					
			60674	197.0	199.9	2.9	0.10					
			60675	199.9	203.7	3.8	0.10					

DOME EXPLORATION (CANADA) LIMITED

LOCATION: 27+70N; 11+60E. From collar		DIAMOND DRILL RECORD				HOLE NO						
570'N & 200'E to Post 1, Claim P.583225						177-15						
AZIMUTH: GRID NORTH (320°T)		PROPERTY: PROJECT 177 - Macklem and Thomas Townships, Ontario.				CLAIM NO: P.583225						
DIP: -45°	LENGTH: 203'	ELEVATION:		CLAIM NO: P.583225								
STARTED: August 23, 1983	CORE SIZE: AQ	SYSTEM OF MEASURE: IMPERIAL		SECTION:								
COMPLETED: August 24, 1983	DIP TESTS (CORRECTED):	At 203' 37°30'		LOGGED BY: B. Cole								
PURPOSE: CROSS SECTION		DATE LOGGED: August 24-29, 1983										
FOOTAGE from	to	DESCRIPTION	SAMPLE				Au dwt/ton	Ag	Cu %	Zn %		
			No.	from	to	Length						
0.0	14.0	CASING AND OVERBURDEN										
14.0	45.6	MAFIC VOLCANIC: Green, moderately chloritic. Massive to slightly foliated at 35° to the core axis. Fine-grained. 10% small amphibole blebs. Short, red-brown, oxidized portions locally. Minor quartz-carbonate veining. Slightly blocky.										
		36.0-45.6: Gradual transition from volcanic to iron carbonate, 15% quartz-carbonate veining.	60698	36.0	41.0	5.0	N11					
			60699	41.0	45.6	4.6	N11					
45.6	61.6	IRON CARBONATE: Greenish-buff. Massive. Moderately brecciated. Abundant irregular quartz-carbonate veining. Minor pyrite. Some short, highly oxidized, red-brown portions.										
		45.6-48.0: 15% quartz-carbonate veining.	60700	45.6	48.0	2.4	N11					
		48.0-49.1: Highly oxidized. 10% quartz-carbonate veining.	60701	48.0	49.1	1.1	N11					
		49.1-50.4: Similar to 45-48.	60702	49.1	50.4	1.3	Tr					
		50.4-53.2: Similar to 48-49.	60703	50.4	53.2	2.8	Tr					
		53.2-61.6: Similar to 45-48. Moderately chloritic locally.	60704	53.2	57.5	4.3	Tr					
			60705	57.5	61.6	4.1	Tr					

DOME EXPLORATION (CANADA) LIMITED
DIAMOND DRILL RECORD

HOLE No: 177-15
PAGE No: 2 of 3

FOOTAGE		DESCRIPTION	SAMPLE				Au dwt/ton	Ag	Cu %	Zn %		
from	to		No	from	to	Length						
61.6	86.8	MAFIC VOLCANIC: Green to yellowish green, locally chloritic, massive. Highly brecciated locally with accompanying 40%-70% network of quartz-carbonate veining. Minor short sections of iron carbonate occur locally.										
		61.6-67.1: 40%-70% quartz-carbonate veining. Highly brecciated.	60706	61.6	64.0	3.4	Tr					
			60707	64.0	67.1	3.1	N11					
86.8	142.7	IRON CARBONATE: Similar to 45-61 often with thin chloritic stringers and very small angular clasts. Trace pyrite.										
		86.8-90.5: 5% quartz-carbonate veining.	60708	86.8	90.5	3.7	N11					
		90.5-93.3: Mafic volcanic; similar to 61-86.										
		93.3-142.7: 5%-15% irregular quartz-carbonate veining. Minor, short slightly oxidized portions	60709	93.3	98.0	4.7	N11					
			60710	98.0	102.9	4.9	Tr					
			60711	102.9	107.7	4.8	Tr					
			60712	107.7	112.0	4.3	Tr					
			60713	112.0	116.4	4.4	Tr					
			60714	116.4	120.6	4.2	N11					
			60715	120.6	125.3	4.7	N11					
			60716	125.3	129.9	4.6	N11					
			60717	129.9	134.5	4.6	N11					
			60718	134.5	139.1	4.6	0.10					
			60719	139.1	142.7	3.6	Tr					
142.7	203.0	MAFIC VOLCANIC: Green to yellowish green. Moderately chloritic locally. Massive. Fine-grained. Abundant quartz-carbonate blebs and veining.										
		142.7-144.3: Highly oxidized. Orange-brown. Minor quartz-carbonate veining.	60720	142.7	144.3	1.6	0.20					

DOME EXPLORATION (CANADA) LIMITED

LOCATION: 27+10N, 13+60E. From collar 405'S & 85'W to Post 3, Claim P.583220				DIAMOND DRILL RECORD				HOLE No 177-16					
AZIMUTH: GRID NORTH (320°T)								PROPERTY: PROJECT 177 - Macklem and Thomas Townships, Ontario					
DIP: -45°		LENGTH: 304'		ELEVATION:		CLAIM No: P.583220 - 66' P.583225 - 238'							
STARTED: AUGUST 24, 1983		CORE SIZE: A.Q.		SYSTEM OF MEASURE: IMPERIAL		SECTION:							
COMPLETED: AUGUST 26, 1983		DIP TESTS (CORRECTED): at 304' 39°00'				LOGGED BY: B. Cole							
PURPOSE: CROSS SECTION						DATE LOGGED: AUGUST 29, 1983							
FOOTAGE		DESCRIPTION		SAMPLE				Au dwt/ton	Ag	Cu %	Zn %		
from	to	No.	from	to	Length								
0.0	18.0	CASING AND OVERBURDEN											
18.0	202.1	MAFIC VOLCANICS: Dark green, 15%-20% small, sub-angular, generally lenticular amphibole clasts in fine-grained chloritic matrix. Minor feldspathic clasts as well. Probably pyroclastic. Moderately well developed foliation at 30° to the axis. Minor quartz-carbonate veining. Trace pyrite. Medium-grained, massive flow between 162.8- 5%-10% quartz-carbonate veining. 84.0-95.0: Moderate red-brown oxidation. 101.0-104.0: Grind. 104.0-162.8: Highly carbonatized. Quite blocky with grind. 5%-10% quartz-carbonate blebs and veins. Some short sections of iron carbonate. Numerous short, red-brown oxidized sections. Grind between 112.0-114.0. 179.7-184.0: 10% randomly orientated quartz-carbonate veining. Representative sample.		60727	179.7	184.0	4.3	0.1					
202.1	212.2	SILICEOUS FLOW OR INTRUSIVE: Grey, massive. Fine-grained, highly siliceous, 5% disseminated pyrite. Minor quartz-carbonate veining. Brecciated between 209.6-212.2.		60728	202.1	206.5	4.4	0.4					
				60729	206.5	209.6	3.1	0.2					
				60730	209.6	212.2	2.6	0.1					

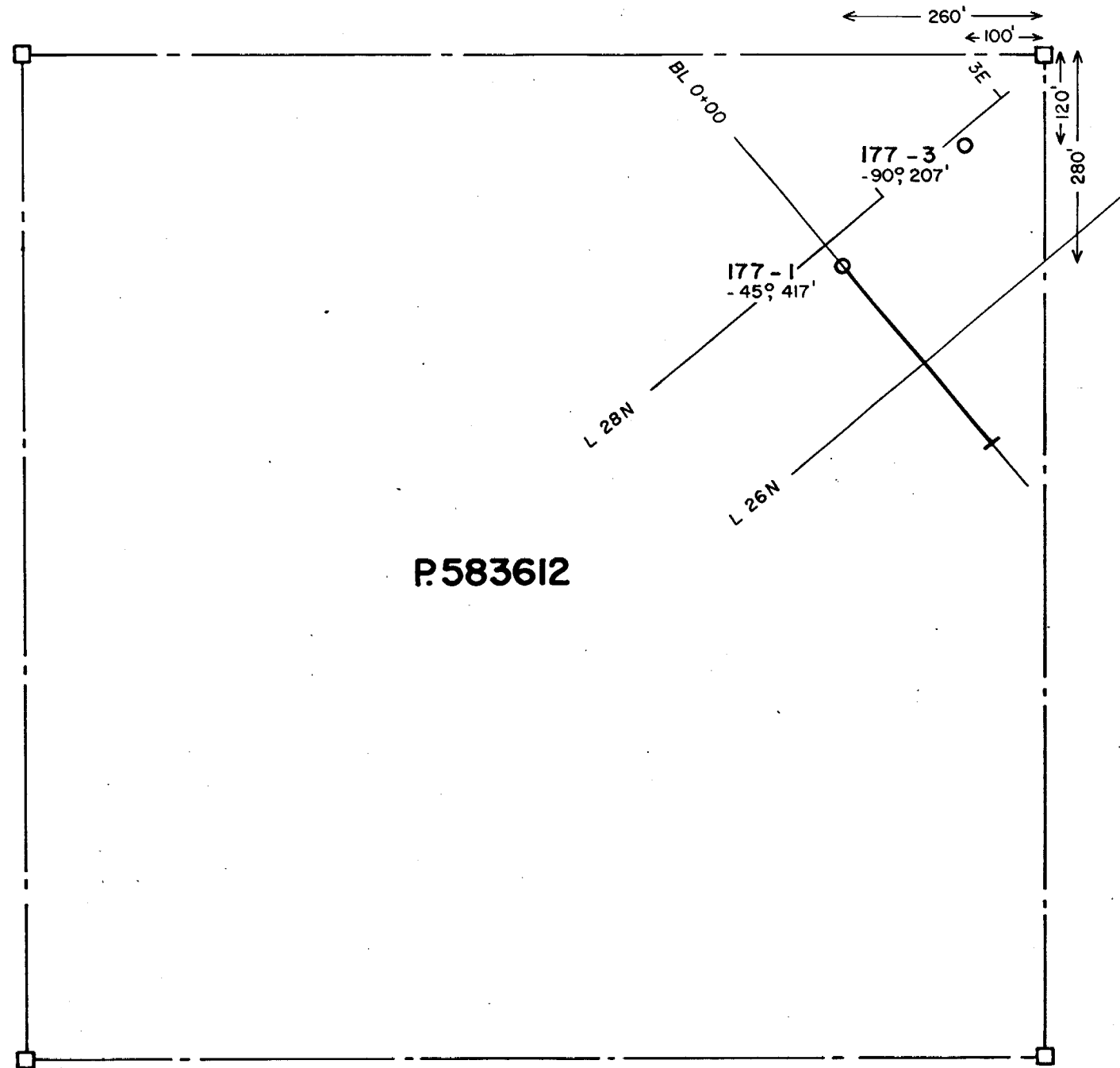
DOME EXPLORATION (CANADA) LIMITED
DIAMOND DRILL RECORD

HOLE No: 177-17

PAGE No: 3 of 3

FOOTAGE from	to	DESCRIPTION	SAMPLE				Au dwt/ton	Ag	Cu %	Zn %		
			No	from	to	Length						
		561.8-581.9: 40%-60% irregular quartz-carbonate.	60745	561.8	566.6	4.8	0.1					
			60746	566.6	571.6	5.0	0.1					
			60747	571.6	576.6	5.0	0.2					
			60748	576.6	581.9	5.3	Tr					
581.9	602.5	IRON CARBONATE: Similar to 521-561. Locally chloritic.										
		581.9-602.5: 15%-25% irregular quartz-carbonate veining.	60749	581.9	586.0	4.1	0.1					
			60750	586.0	590.4	4.4	0.1					
			60751	590.4	595.0	4.6	0.1					
			60752	595.0	598.7	3.7	Tr					
			60753	598.7	602.5	3.8	0.2					
602.5	615.0	CARBONATED MAFIC VOLCANIC: Similar to 495-521.										
	615.0	END OF HOLE										
		Casing pulled.										
		Core checked for fluorescence and radioactivity: nothing of interest.										
		Drilling by N. Morissette Diamond Drilling Limited Haileybury, Ontario										
		Core stored at the Dome Mine South Porcupine, Ontario.										

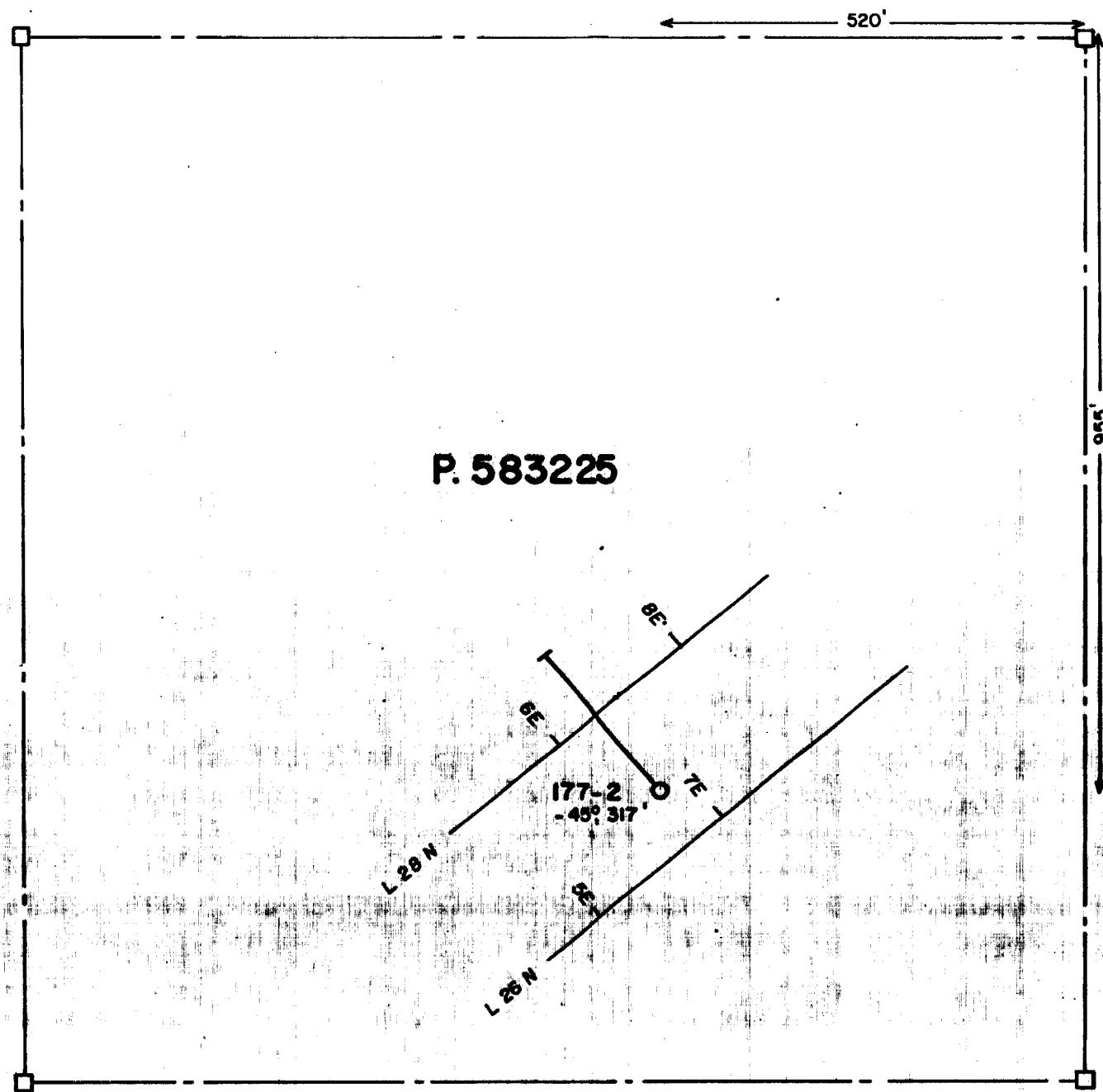
Brian Cole



P583612



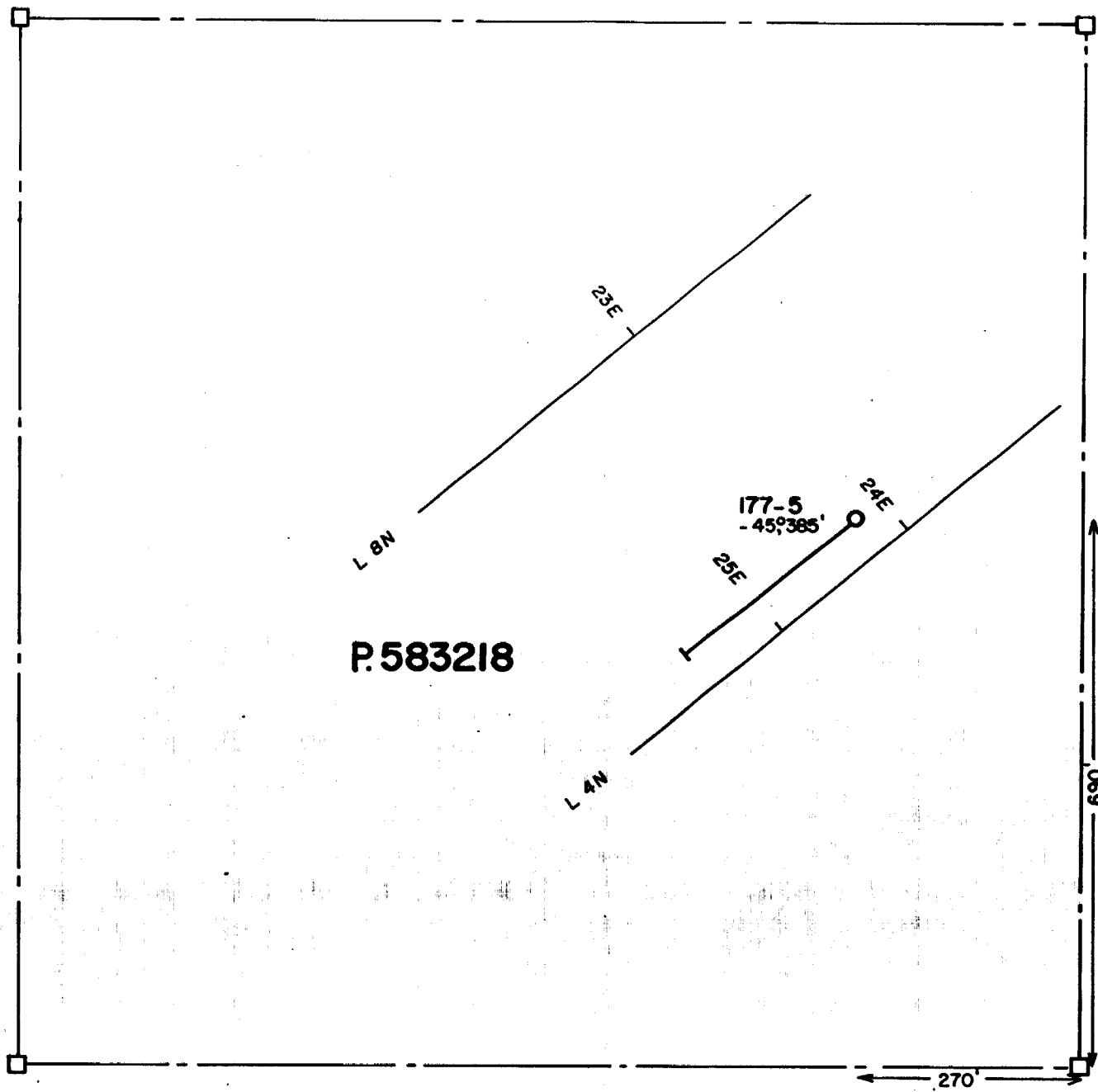
DOME EXPLORATION (CANADA) LTD.				
PROJ. 177 MACKLEM & THOMAS TWP., ONT.				
DDH LOCATIONS				
SCALE	DATE	BY	N.T.S. No.	DWG. No.
1" = 200'	AUG '83	T.S.	42-A-7	177-3



P. 583225



DOME EXPLORATION (CANADA) LTD.				
PROJ.177 MACKLEM & THOMAS TWP,ONT.				
DDH LOCATIONS				
SCALE	DATE	BY	N.T.S. No:	DWG. No:
1" = 200'	AUG. '83	T.S.	42-A-7	177-4



P.583218

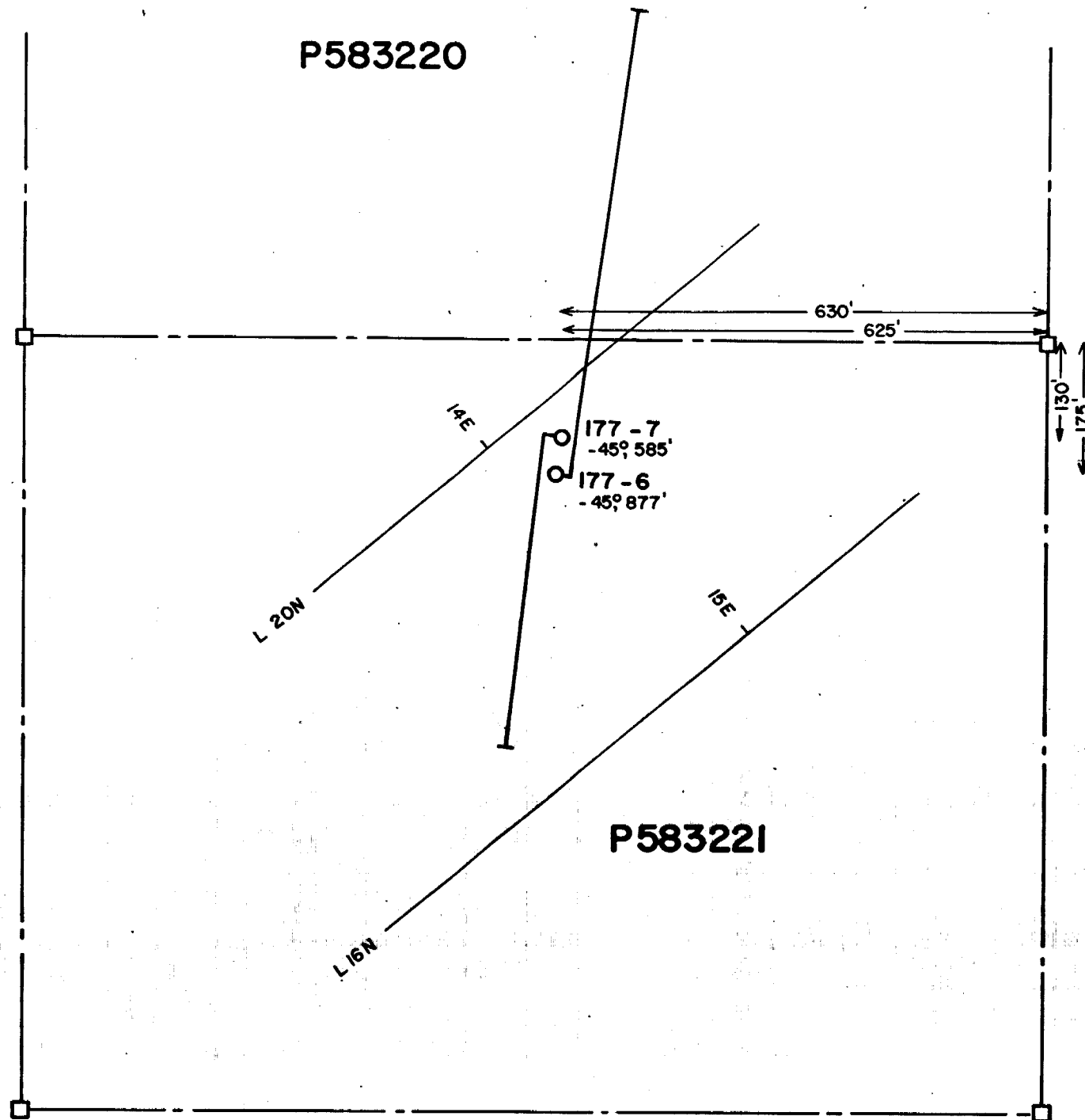
177-5
-45°385'

690'

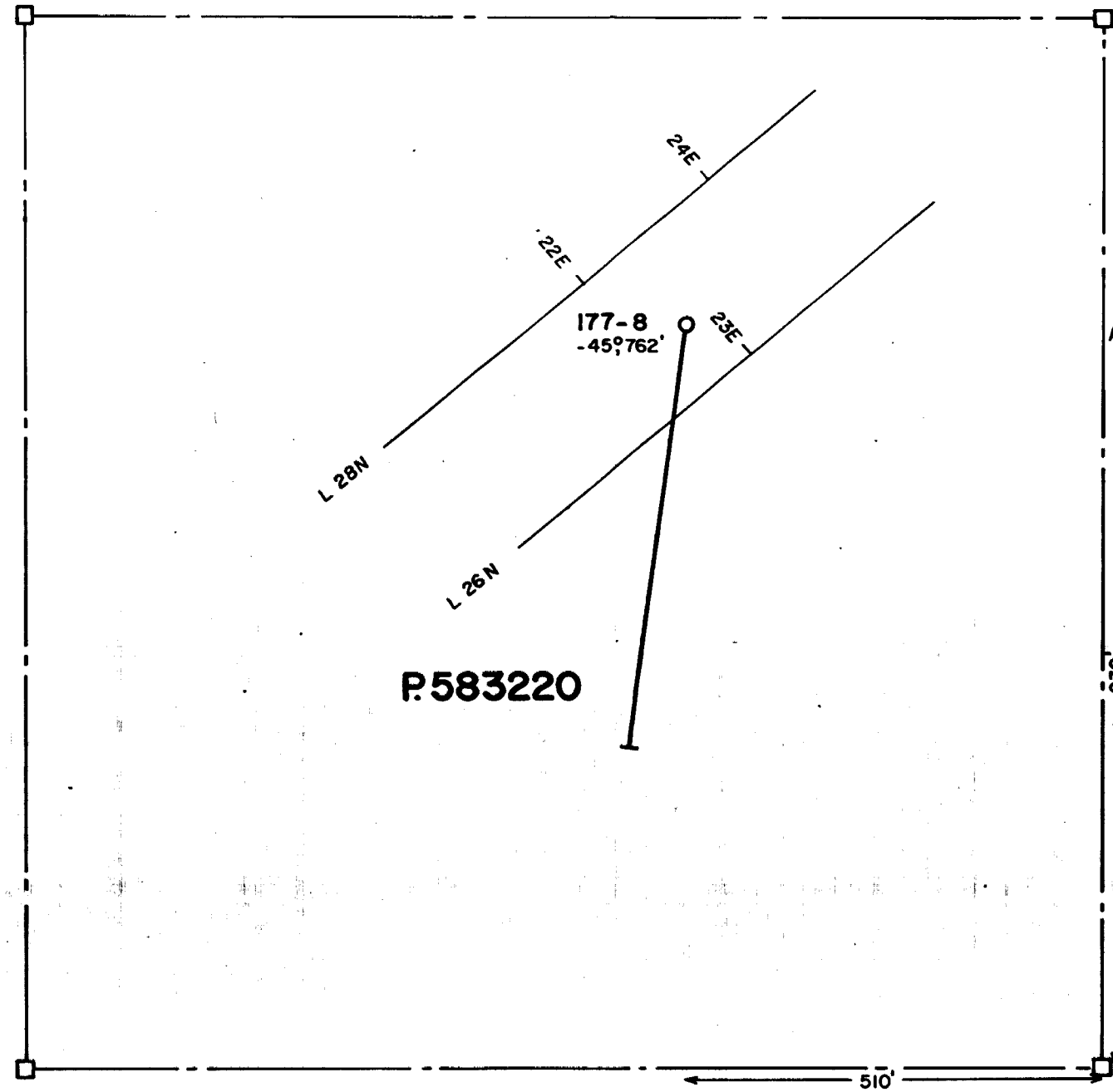
270'



DOME EXPLORATION (CANADA) LTD.				
PROJ. 177 MACKLEM & THOMAS TWP., ONT.				
DDH LOCATIONS				
SCALE	DATE	BY	N.T.S. No.	DWG. No.
1" = 200'	AUG. 83	T.S.	42-A-7	177-5

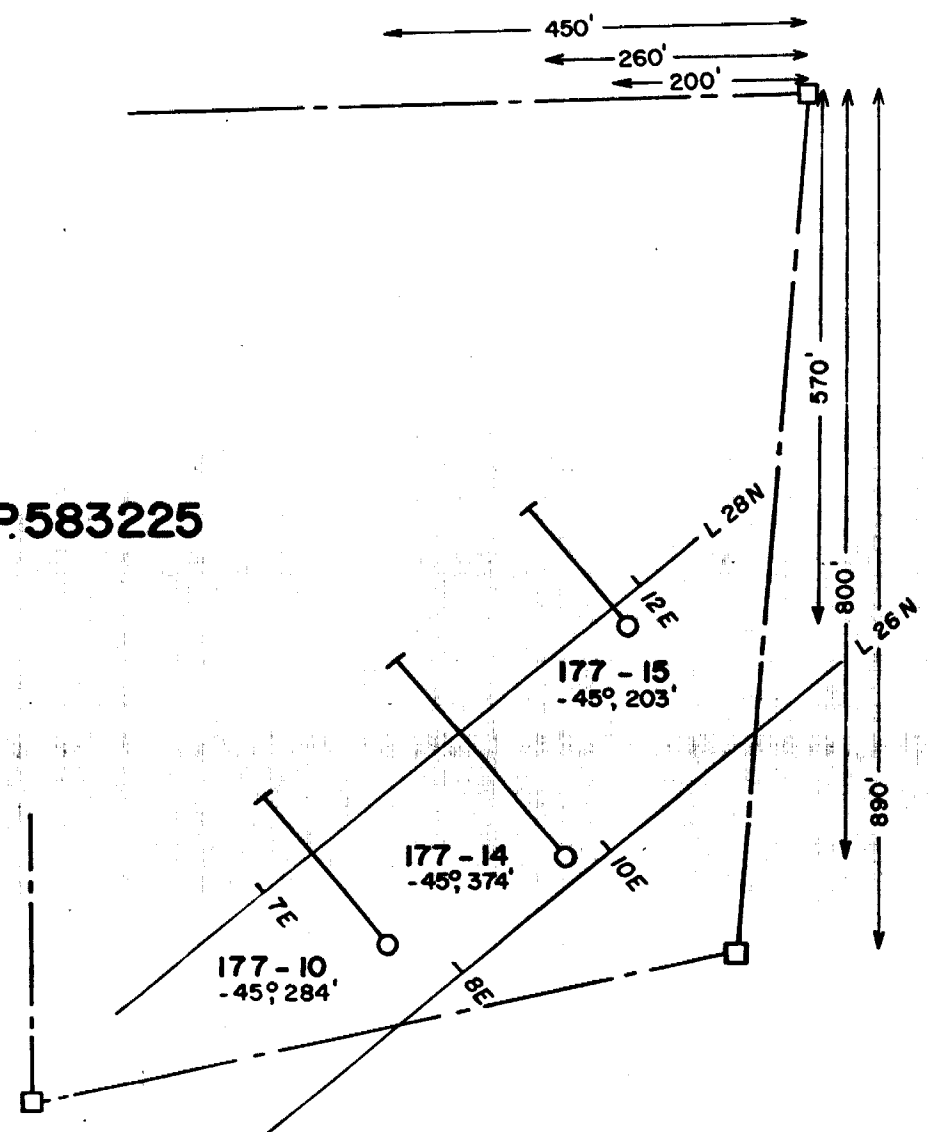


DOME EXPLORATION (CANADA) LTD.				
PROJ. 177 MACKLEM & THOMAS TWP, ONT.				
DDH LOCATIONS				
SCALE	DATE	BY	N.T.S. No:	DWG. No:
1" = 200'	AUG. '83	T.S.	42-A-7	177-6



DOME EXPLORATION (CANADA) LTD.				
PROJ.177 MACKLEM & THOMAS TWP., ONT.				
DDH LOCATIONS				
SCALE	DATE	BY	N.T.S. No:	DWG. No:
1" = 200'	AUG. '83	T.S.	42-A-7	177-7

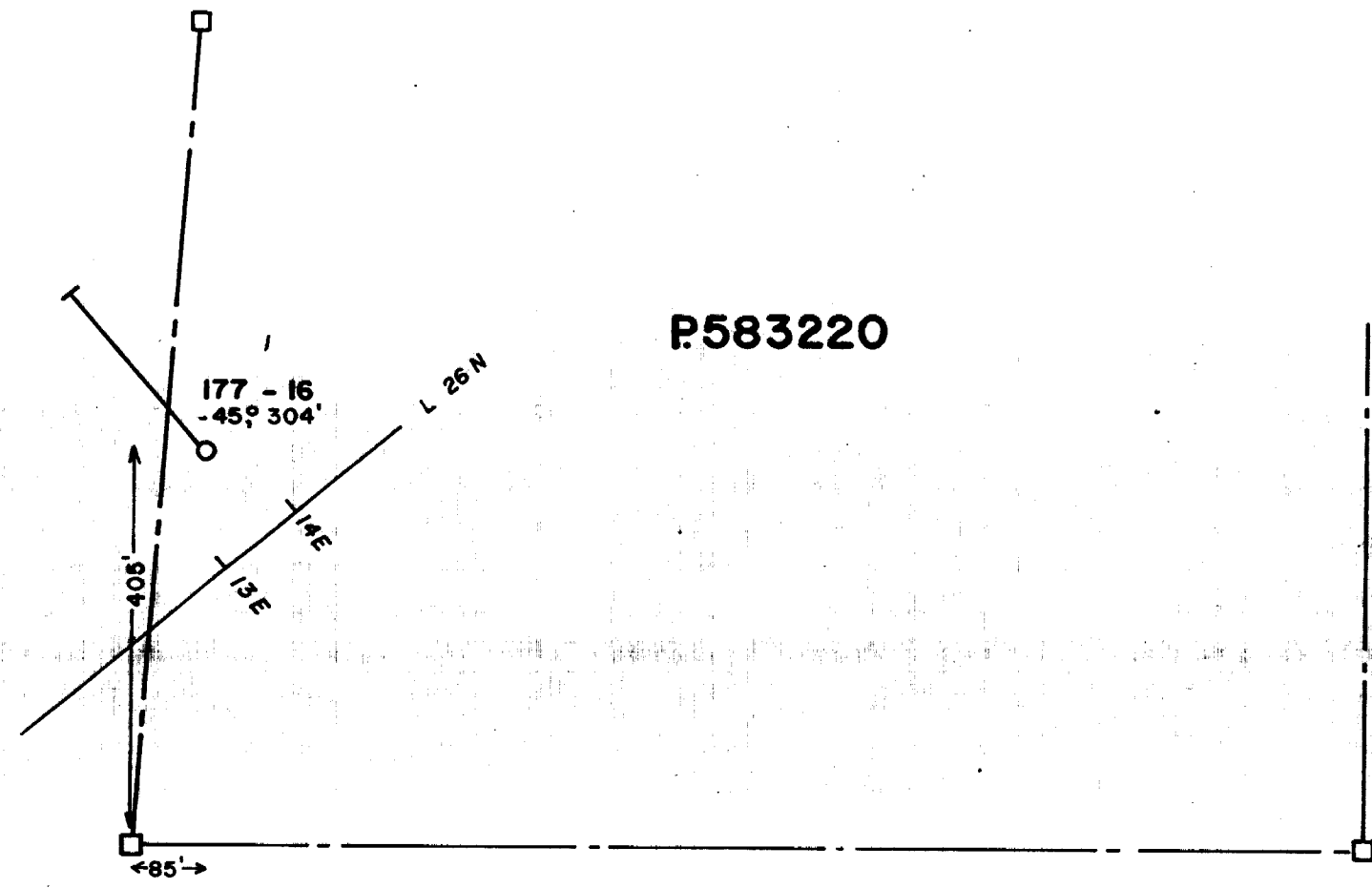
P.583225



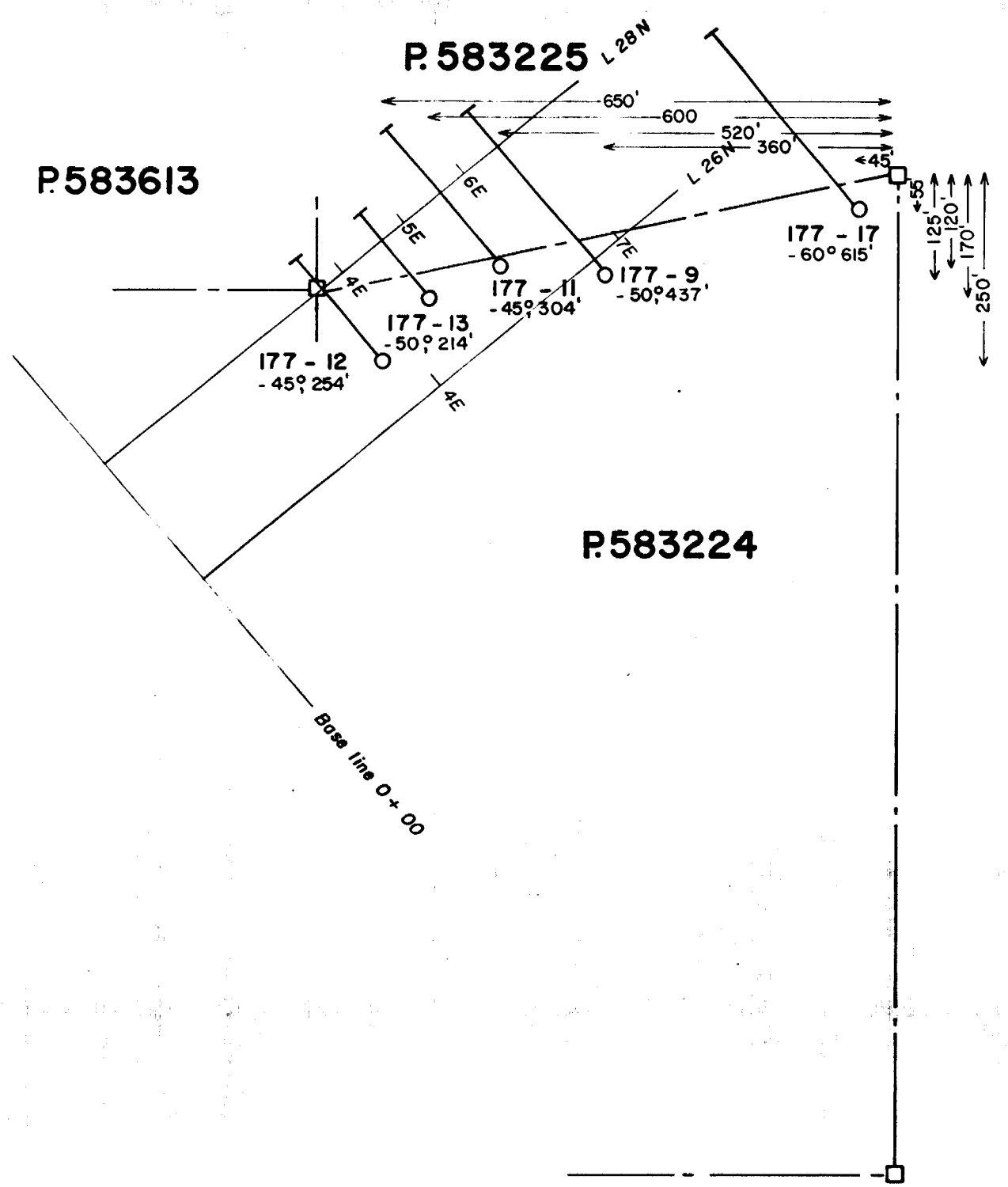
DOME EXPLORATION (CANADA) LTD.				
PROJ. 177 MACKLEM & THOMAS TWP. ONT.				
DDH LOCATIONS				
SCALE	DATE	BY	N.T.S. No.	DWG. No.
1" = 200'	JULY 1984	T.S.	42-A-7	177-26

P.583225

P.583220



DOME EXPLORATION (CANADA) LTD.				
PROJ. 177 MACKLEM & THOMAS TWP, ONT.				
DDH LOCATIONS				
SCALE	DATE	BY	N.T.S. No:	DWG. No:
1" = 200'	JULY 1984	TS.	42-A-7	177-27



DOME EXPLORATION (CANADA) LTD.				
PROJ. 177 MACKLEM & THOMAS TWP, ONT.				
DDH LOCATIONS				
SCALE	DATE	BY	N.T.S. No.	DWG. No.
1" = 200'	JULY 1984	T.S.	42-A-7	177-28

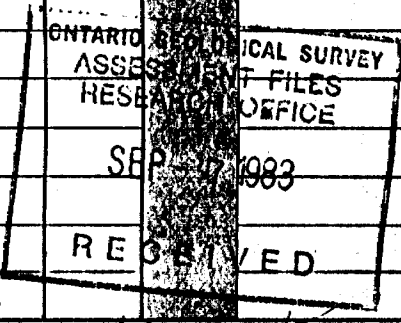


Name and Postal Address of Recorded Holder: **DOMEX EXPLORATION (CANADA) LIMITED**
 P.O. Box 270, Suite 2700, 1 First Canadian Place, Toronto, Ontario M5X 1H1

Prospector's Licence No.: **A.21304**

Summary of Work Performance and Distribution of Credits

Total Work Days Cr. claimed 3550	Mining Claim		Work Days Cr.	Mining Claim		Work Days Cr.	Mining Claim		Work Days Cr.
	Prefix	Number		Prefix	Number		Prefix	Number	
for Performance of the following work. (Check one only)									
<input type="checkbox"/> Manual Work									
<input type="checkbox"/> Shaft Sinking Drifting or other Lateral Work.									
<input type="checkbox"/> Compressed Air, other Power driven or mechanical equip.									
<input type="checkbox"/> Power Stripping									
<input checked="" type="checkbox"/> Diamond or other Core drilling									
<input type="checkbox"/> Land Survey									



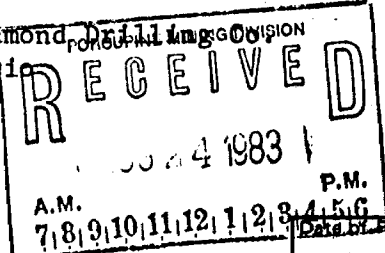
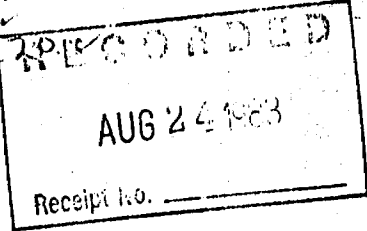
All the work was performed on Mining Claim(s): **P.583218, P.583220, P.583221, P.583225, P.583612**

Required Information eg: type of equipment, Names, Addresses, etc. (See Table Below)

Hole No.	Length	Dates
177-1	417'	July 8-12, 1983 -P-583612 ✓
177-2	317'	July 13-14, 1983 -P-583225 ✓
177-3	207'	July 14-15, 1983 -P-583612 ✓
177-5	385'	Aug. 3-5, 1983 -P-583218 ✓
177-6	877'	July 16-23, 1983 P-583220 & 221 ✓
177-7	585'	July 24-26, 1983 P-583221 ✓
177-8	762'	July 27-Aug. 2, 1983 P-583221 ✓

All core A.Q.

Drilling by N. Morissette Diamond Drilling Division
Haileybury, Ontario



Date of Report: **August 17, 1983**
 Recorded Holder or Agent (Signature): *L. B. Halladay*

Certification Verifying Report of Work

I hereby certify that I have a personal and intimate knowledge of the facts set forth in the Report of Work annexed hereto, having performed the work or witnessed same during and/or after its completion and the annexed report is true.

Name and Postal Address of Person Certifying: **L. B. Halladay, P.O. Box 270, Suite 2700, 1 First Canadian Place, Toronto, Ont. M5X 1H1**

Date Certified: **August 17, 1983**
 Certified by (Signature): *L. B. Halladay*

Table of Information/Attachments Required by the Mining Recorder

Type of Work	Specific information per type	Other information (Common to 2 or more types)	Attachments
Manual Work	Nil	Names and addresses of men who performed manual work /operated equipment, together with dates and hours of employment.	Work Sketch: these are required to show the location and extent of work in relation to the nearest claim post.
Shaft Sinking, Drifting or other Lateral Work			
Compressed air, other power driven or mechanical equip.			
Power Stripping	Type of equipment and amount expended. Note: Proof of actual cost must be submitted within 30 days of recording.	Names and addresses of owner or operator together with dates when drilling/stripping done.	Work Sketch (as above) in duplicate
Diamond or other core drilling	Signed core log showing; footage, diameter of core, number and angles of holes.		
Land Survey	Name and address of Ontario land surveyor.	Nil	Nil

SCHEDULE OF CLAIMS

<u>Claim No.</u>	<u>Work Days Cr.</u>	<u>Claim No.</u>	<u>Work Days Cr.</u>
P.530310	80	P.583622	40
P.530311	80	P.583623	40
		P.583624	40
P.583206	40	P.583625	40
P.583207	40		
P.583208	40	P.583627	40
P.583209	40	P.583628	40
P.583210	40	P.583629	40
P.583211	70	P.583630	40
P.583212	80		
		P.583641	40
P.583215	80	P.583642	40
P.583216	80	P.583643	40
P.583217	80	P.583644	40
P.583218	80		
P.583219	80	P.583797	80
P.583220	80	P.583798	80
P.583221	80	P.583799	80
P.583222	80	P.583800	40
P.583223	80	P.583801	80
P.583224	80	P.583802	80
P.583225	80	P.583803	80
P.583611	80	P.583805	40
P.583612	80	P.583806	80
P.583613	80	P.583807	80
P.583614	80	P.583808	80
P.583615	80	P.583809	80
		P.583810	40
P.583616	40	P.583811	40
P.583617	40	P.583812	40
P.583618	40	P.583813	80
P.583619	40		
P.583620	40		

58 claims.