



42A07NW0182 2.490 SHERATON

010

COMINCO LTD.

SECTION

Exploration

Eastern District

RADISSON PROJECT

Sheraton Twp., Ontario

June 28, 1971

E.O. Andersen

An airborne magnetic survey totalling 108 line miles, of which 60 line miles were flown over claims being submitted for assessment credit at this time. The survey was flown during April-May 1971 by Dighem Ltd. of Toronto using the FH-1100 helicopter CF-DAL based in Timmins, Ontario. Equipment consisted of a Barringer Research Ltd. AM-104 nuclear precession magnetometer, a Bonzer radioaltimeter, Triad sequence camera and an MFE 8-channel hot pen recorder. The line spacing was 1/8 mile, the mean aircraft altitude was 200 feet and the magnetometer was towed 30 feet below the aircraft.

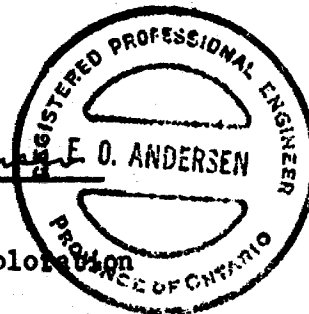
*Sensor altitude
170'*

The magnetic data was digitized to produce a total field magnetic map contoured at 50 gamma intervals.

The magnetic map shows very little magnetic relief except for a strong north-east - south-west trending high of about 1300 gammas. This feature is probably caused by a diabase dike.

Submitted by: E.O. Andersen

E.O. Andersen
Geophysicist, Exploration



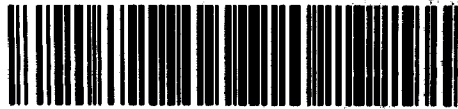
Endorsed by: G.D. Tikkanen

G.D. Tikkanen
Asst. Chief Geologist, Expl.

Distribution:

- Ont. Dept. of Mines (2)
- file - Radisson (1)

AREA - 267
TELEPHONE - 1171



42A07NW0162 2.490 SHERATON

900

JUN 9 1971
TO McSpin

DEPARTMENT OF MINES AND NORTHERN AFFAIRS
60 Wilson Avenue,
Timmins, Ontario,
June 7, 1971.

MINING LANDS BRANCH
OFFICE OF THE MINING RECORDER

RECEIVED

JUN 9 1971

RECEIVED

JUN 9 1971

Fred W. Matthews,
Supervisor, Projects Section,
Ontario Department of Mines,
Whitney Block,
Parliament Buildings, Toronto.

MINING LANDS
BRANCH
NOTIFICATION OF RECORDING
OF ASSESSMENT WORK CREDITS

PROJECTS
SECTION

Date of Recording of Work June 3, 1971.
Recorded Holder Cominco Limited,
335 Bay Street,
Toronto 105, Ontario.
(address)
Township or Area Sheraton & Thomas Townships

Type of Survey and number of Assessment Days Credits per claim
GEOLOGICAL <input type="checkbox"/> Ground <input type="checkbox"/>
Magnetometer 20 days
Electromagnetic days
Radiometric days
..... days
GEOLOGICAL days
GEOCHEMICAL days
SECTION 84 (14) days

Mining Claims
P-255280-255307 incl.,
P-256233-256312 incl.,
P-294963-294965 incl.

NOTICE TO RECORDED HOLDER

- Survey reports and maps in duplicate must be submitted to the Projects Section, Toronto within 60 days from the date of recording of this work.
- Reports and maps are being forwarded to Projects Section with this letter.

J. C. Penner
Mining Recorder.

c.c. Cominco Limited

July 23



TECHNICAL ASSESSMENT WORK CREDITS

Recorder Holder Cominco Limited

Township or Area Sheraton & Thomas Townships

Type of Survey and number of Assessment Days Credits per claim

Mining Claims

P. 255280 to 255307 inclusive
256233 to 256312 "
294963 to 294965 "

GEOPHYSICAL

Magnetometer 20days

Electromagneticdays

Radiometricdays

.....days

GEOLOGICAL.....days

GEOCHEMICAL.....days

Man days

Ground

Special Provision

Airborne

NOTICE OF INTENT TO BE ISSUED

Credits have been reduced because of partial coverage of claims.

Credits have been reduced because of corrections to work dates and figures of applicant.

NO CREDITS have been allowed for the following mining claims as they were not sufficiently covered by the survey:

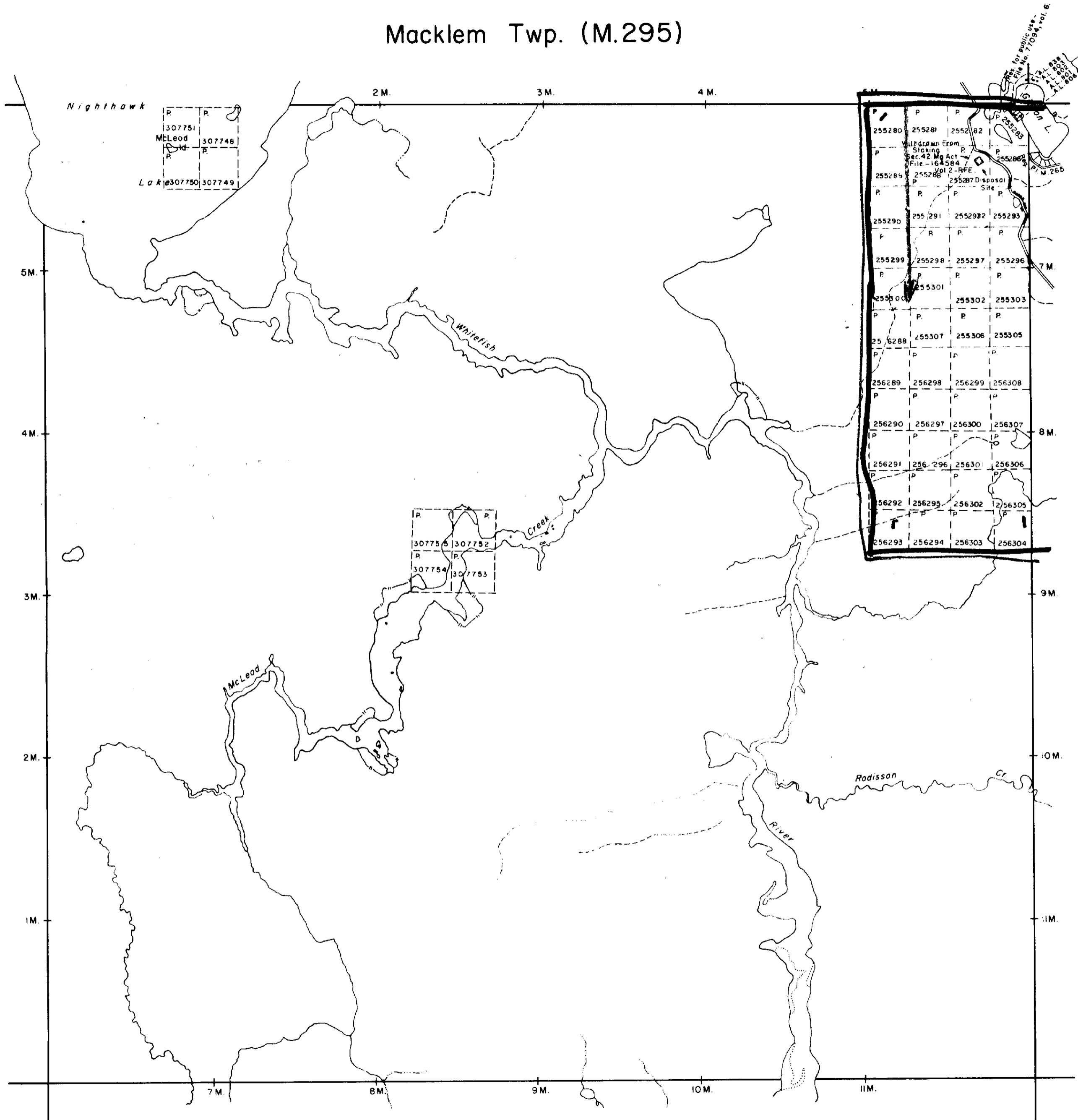
The Mining Recorder may reduce the above credits if necessary in order that the total number of approved assessment days recorded on each claim does not exceed the maximum allowed as follows: Geophysical - 80; Geological - 40; Geochemical - 40;

Macklem Twp. (M.295)

Carman Twp. (M.266)

Sheraton Twp. (M.386)

Blackstock Twp. (M.263)



THE TOWNSHIP OF

THOMAS

claim map
DISTRICT OF COCHRANE 2.490

PORCUPINE MINING DIVISION

SCALE: 1-INCH 40 CHAINS

LEGEND

- PATENTED LAND (P)
- CROWN LAND SALE (C.S)
- LEASES (L)
- LOCATED LAND (Loc.)
- LICENSE OF OCCUPATION (L.O.)
- MINING RIGHTS ONLY (M.R.O)
- SURFACE RIGHTS ONLY (S.R.O)
- ROADS
- IMPROVED ROADS
- KING'S HIGHWAYS
- RAILWAYS
- POWER LINES
- MARSH OR MUSKEG
- MINES
- CANCELLED (C)

NOTES

400' Surface Rights Reservation around all lakes and rivers.

Reserve Flooding Rights to H.E.P.C. of Ontario to file 905 E. 11th St. Porcupine District on Nighthawk Lake

DATE OF ISSUE
JUL - 8 1971
DEPARTMENT OF MINES AND TECHNICAL SURVEYS

PLAN NO. M-312

ONTARIO DEPARTMENT OF MINES AND NORTHERN AFFAIRS



SHERATON TOWNSHIP

Claim map

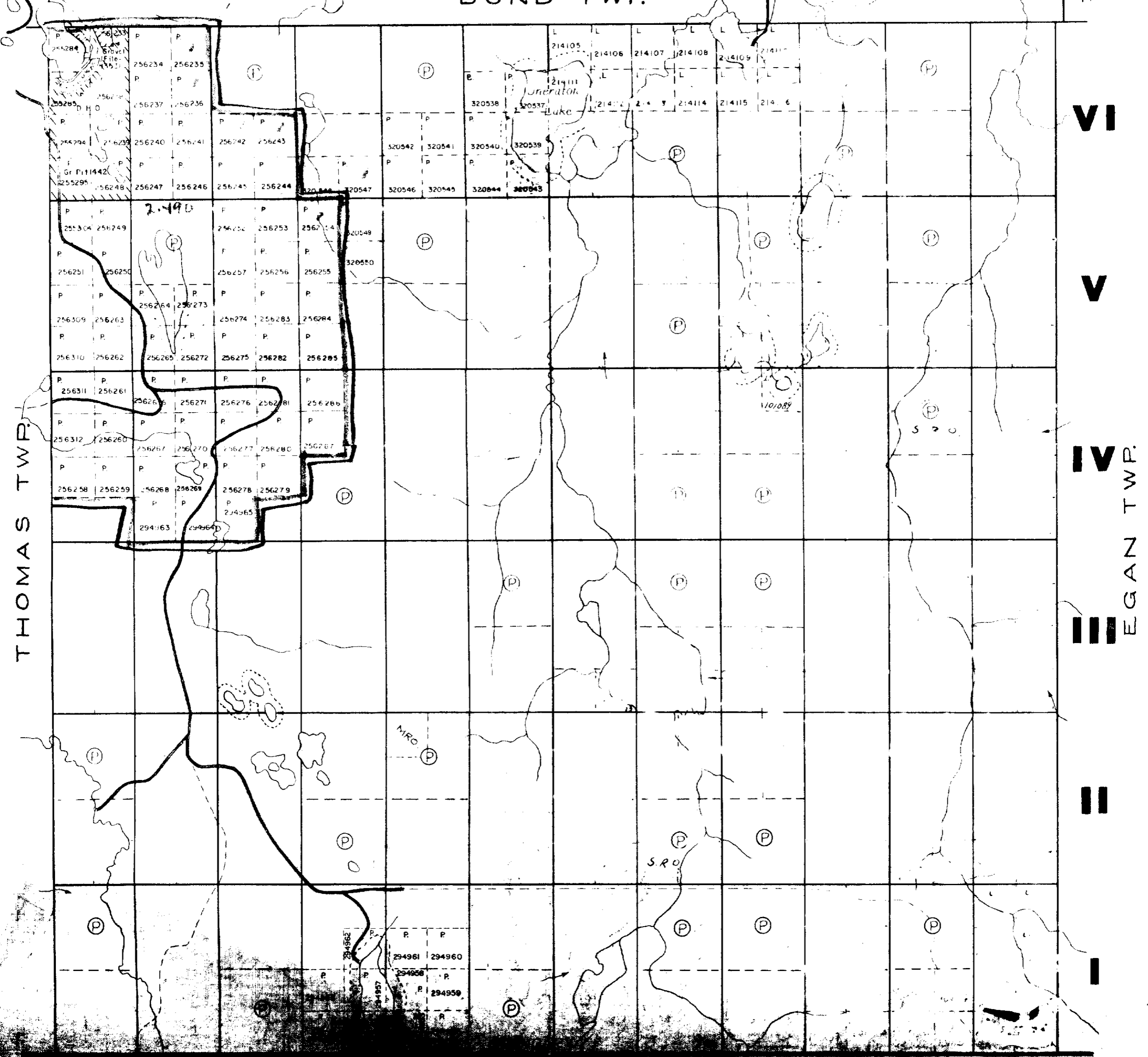
PORCUPINE MINING DIVISION

DISTRICT OF COCHRANE

M.386

SCALE 40 CHAINS TO ONE INCH

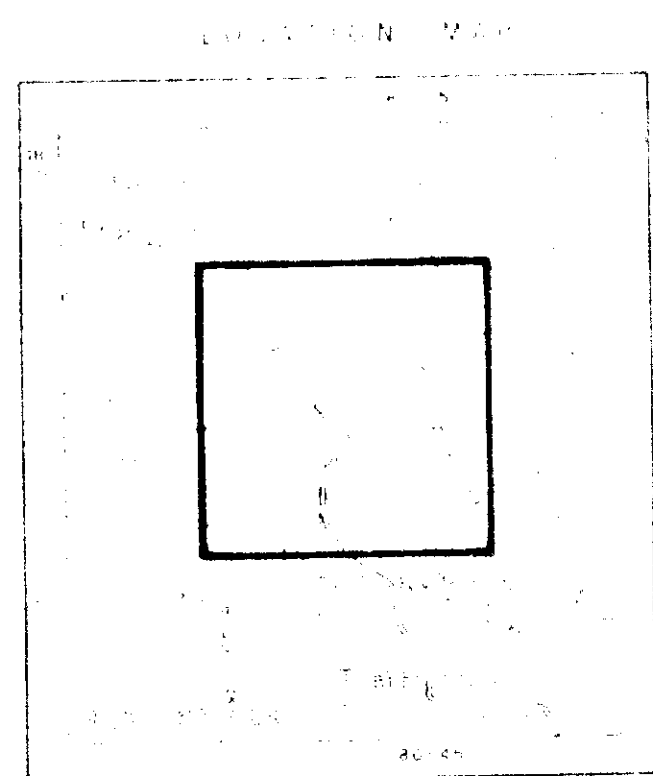
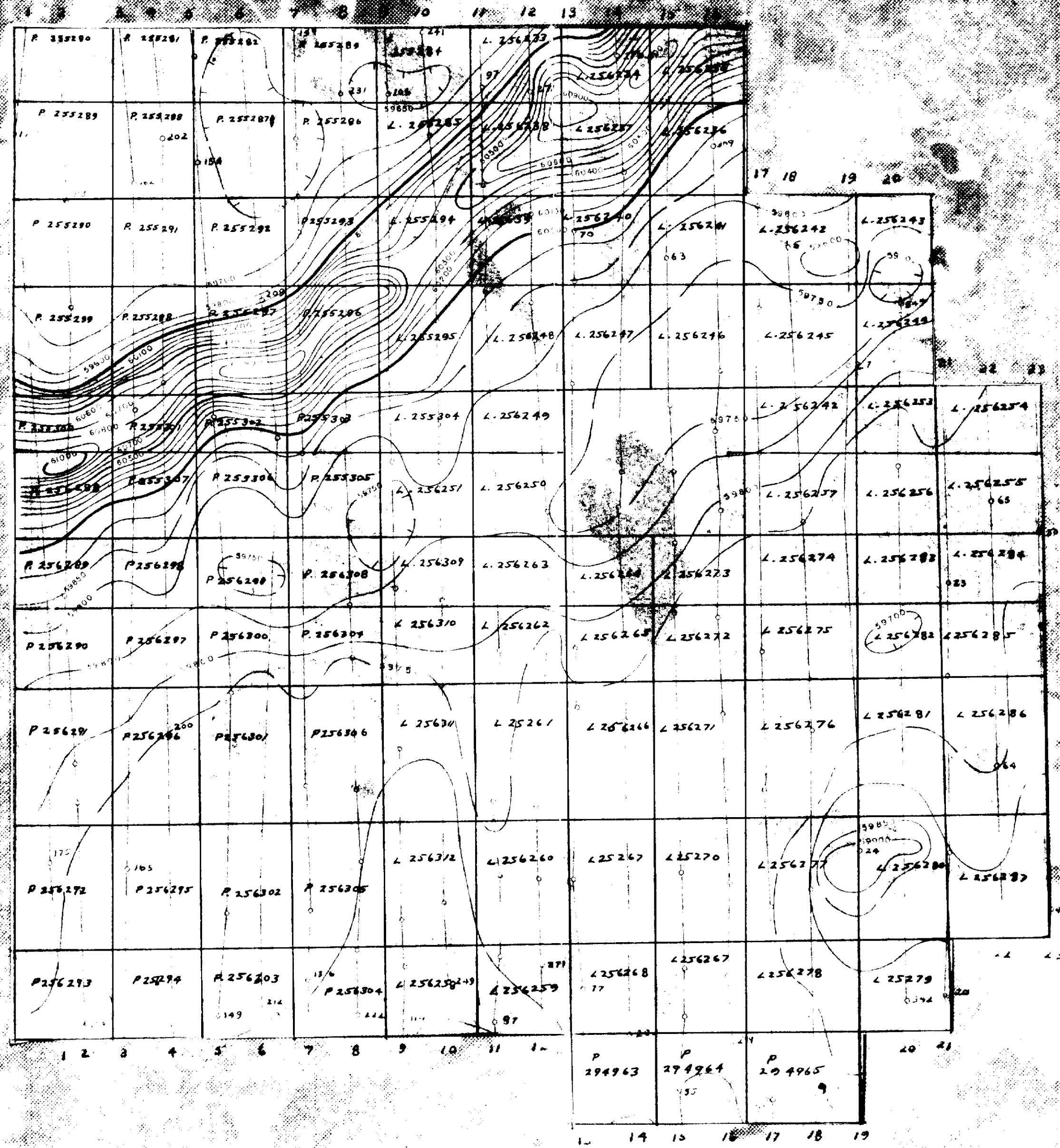
BOND TWP.



42A07NW2162 P. 490 SHERATON

210

3 2 1
reserved origin, all lakes and rivers



Scale 1:250,000



220

DIGHEM SURVEY MAGNETICS

COMINGO LIMITED
RADISSON PROJECT, ONTARIO

ISOMAGNETIC LINES

Note: 1000



1000 gamma



2000 gamma



3000 gamma



4000 gamma



5000 gamma



6000 gamma



Height indicated is 20 feet above ground level