



42A07NW0163 10 THOMAS

010

Diamond Drilling

Township of THOMAS

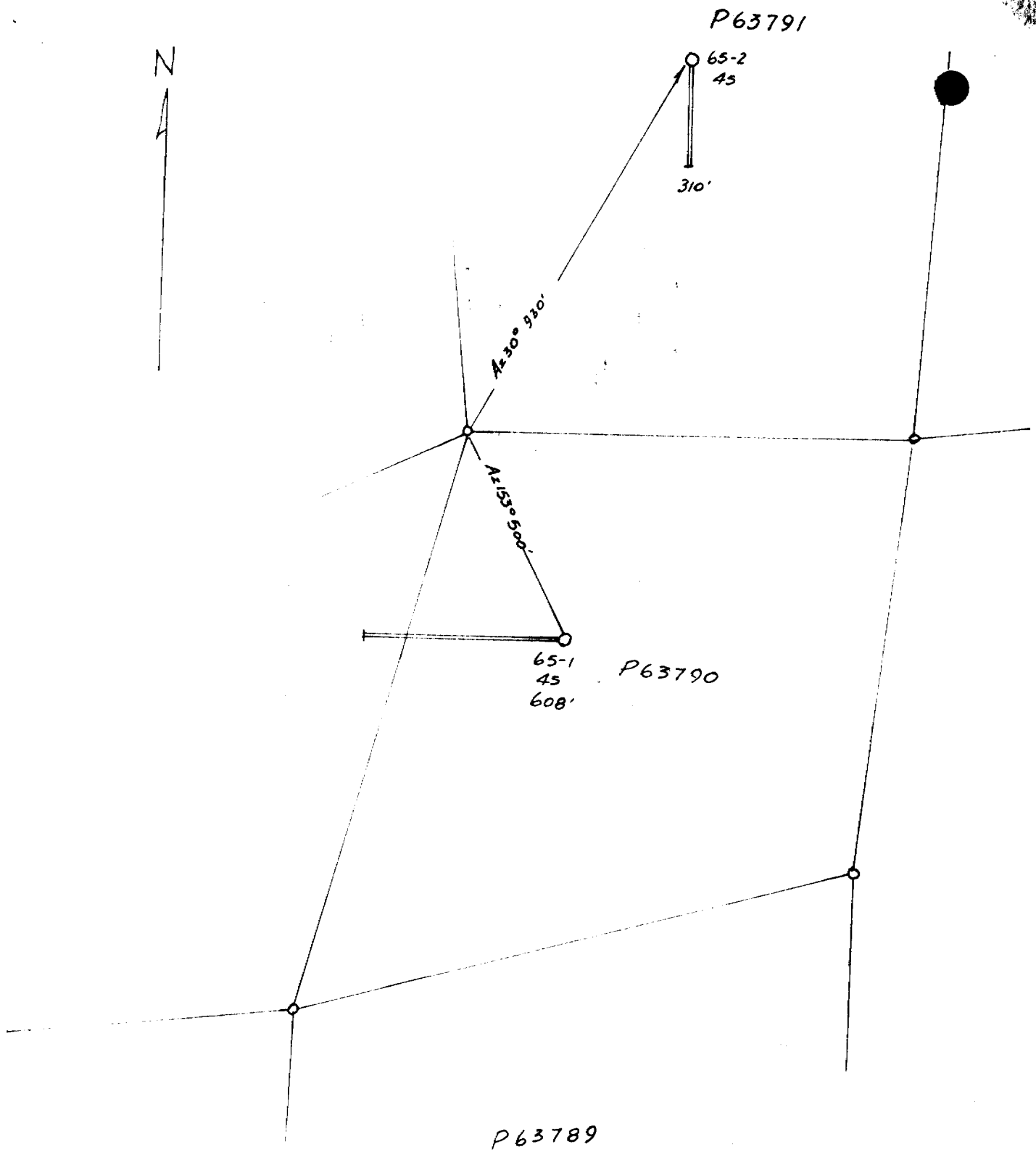
Report NO: 10

Work performed by: Markay Mining Corporation Ltd.

Claim NO	Hole NO	Footage	Date	Note
P.63790	65-1	608'	June/65	
P.63791	65-2	310'	June/65	
P.82849	65-3	5695'	July/65	

6,613

Notes:



MARKAY MINING CORPORATION LIMITED

THOMAS TOWNSHIP

DRILL HOLE LOCATIONS

65-1 ~~~~~ 65-2

1" = 300'

J. B. Shaw
July 20, 1965

DIAMOND DRILL RECORD

63790

PROPERTY MARKAY MINING CORPORATION LIMITED HOLE NO. 65-1

TOWNSHIP Thomas Township PAGE NO. 1

LOCATION Line 32 + 00 South CORE LOCATION Drill Site STARTED June 19, 1965

Station 12 + 50 East DATUM _____ COMPLETED June 24, 1965

BEARING _____ Az. 270° DEPTH 608'

ELEVATION _____ DIP 45°

DEPTH FEET	FORMATION	SAMPLE NO.	WIDTH OF SAMPLE	GOLD OZ.		
0 - 32	Casing					
32 - 88	Mariposite - sericite schist; cream-green colour, fine grained, about 5% mariposite - fuchsite; schistosity at 40°.					
	at 40 - 1" qtz. str. at 90°.					
	at 41 - 3" rusty qtz. carb. stringer					
	41 - 3" grab sample	1-1	3"	nil		
	at 61.5 - 1" qtz. stringer at 45° with sli. chalcopryite					
	76.3 - 77 rust weathering carbonate.					
88 - 109	Schist; fairly hard, light green, with chlorite and feldspar?					
	101.5 - 103.5 - 75% irregular qtz. with some diss. pyrite, representative grab sample.	1-2	2.0	nil		
109 - 138	Talc - carbonate rock; with magnesite, talc some pink carbonate.					
138 - 150	Gneiss; banding at 50° to core axis.					
150 - 153	Chlorite Schist:					
153 - 236	Diabase: fine to medium grained with some pink feldspar.					
236 - 320	Talc-Chlorite Schist: with possible amygdaloidal structures.					

Drilled By CONTINENTAL

Signed [Signature]

DIAMOND DRILL RECORD

PROPERTY HOLE NO. 65-1

TOWNSHIP PAGE NO. 2

LOCATION CORE LOCATION STARTED

..... DATUM COMPLETED

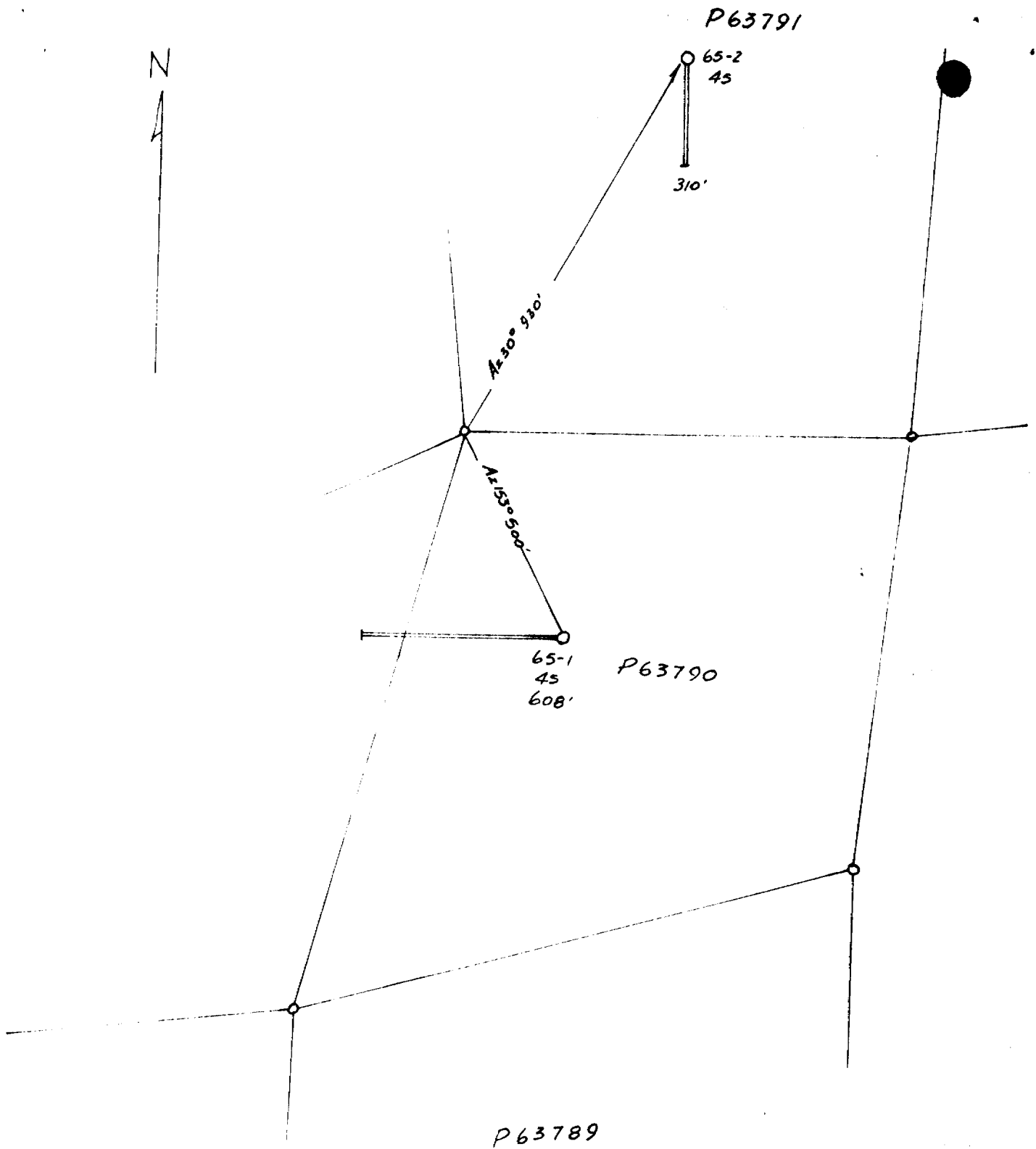
..... BEARING DEPTH

ELEVATION DIP

DEPTH FEET	FORMATION	SAMPLE NO.	WIDTH OF SAMPLE	GOLD OZ.			
236 - 320	298 - 300 - some irregular barren qtz. at 362 - 8" irregular qtz. carbonate str.						
320 - 499	<u>Mariposite - sericite schist: as above.</u> 391 - 393 - light grey aplite dyke contact partially conformable. at 415.8 - 4" qtz.-tourmaline stringer at 70°.						
	416.6 - 417 - qtz. carbonate representative sample.	1-3	0.4	nil			
	417 - 417.5 - rust carbonate. at 447 - 6" rust carbonate. at 449 - 6" rust carbonate. at 448.5 - 1" qtz. str. & rust carbonate for 4" at 495 - 2" barren white qtz. str. at 90°.						
499 - 520	<u>Gneiss:</u>						
520 - 523	<u>Diabase:</u> very fine grained.						
523 - 542	<u>Schist:</u>						
542 - 592	<u>Diabase:</u>						
592 - 608	<u>Mariposite - sericite schist:</u>						
608	E N D						

Drilled By CONTINENTAL

Signed 



MARKAY MINING CORPORATION LIMITED
 THOMAS TOWNSHIP
 DRILL HOLE LOCATIONS

65-1 65-2
 1" = 300'

J. J. Moore
 July 20, 1965

DIAMOND DRILL RECORD

PROPERTY Markay Mining Corp. HOLE NO. 65-2

TOWNSHIP Thomas - Porcupine Mining Division PAGE NO. 1

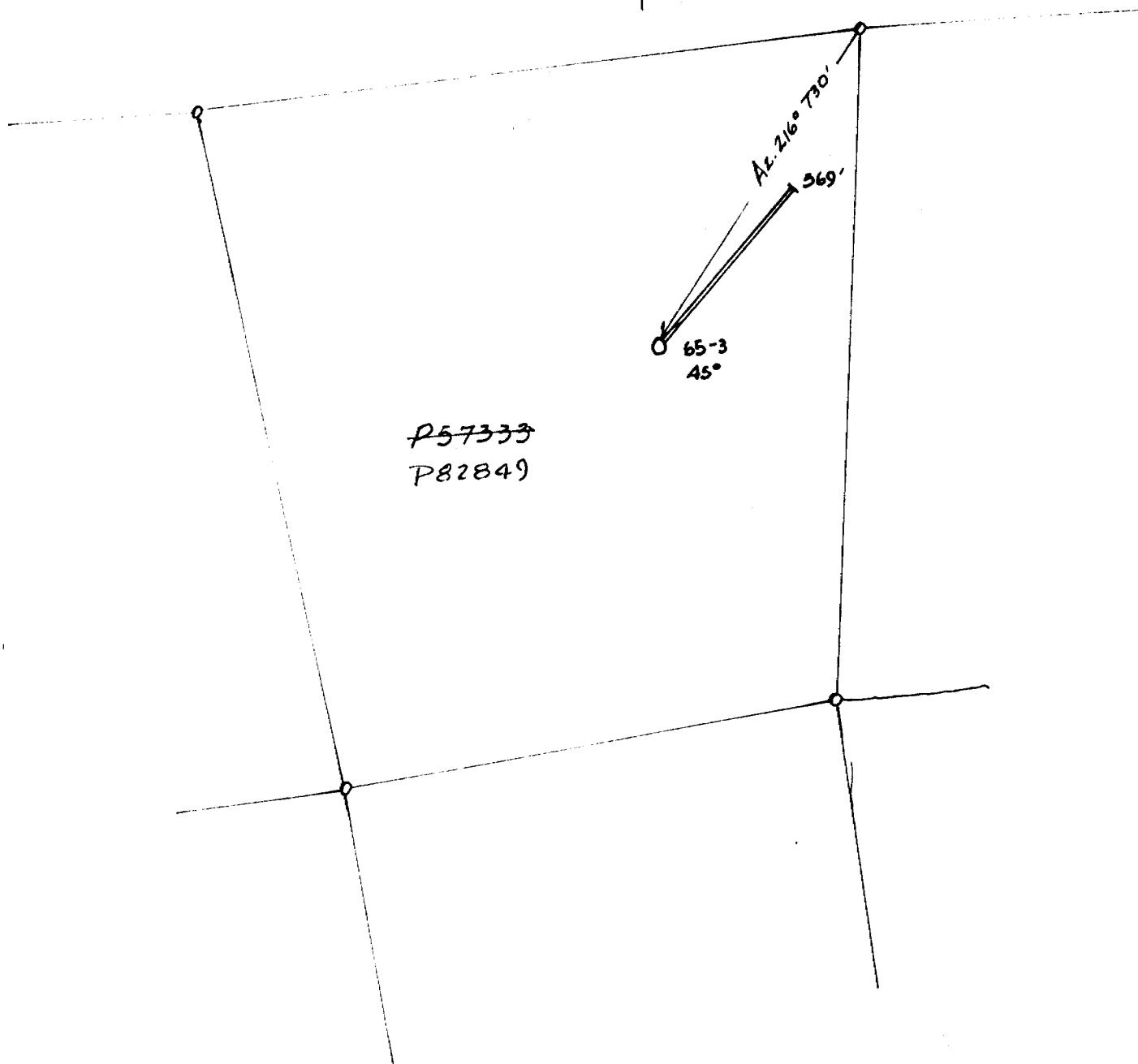
LOCATION Line 71 East CORE LOCATION drill site STARTED June 25, 1965
120' East of Station 19+50 South DATUM COMPLETED June 28, 1965
 BEARING Az. 180° DEPTH 310'
 ELEVATION DIP 45°

DEPTH FEET	FORMATION	SAMPLE NO.	WIDTH OF SAMPLE	GOLD OZ.			
0 - 6	Casing						
6 - 13	<u>Schist: light green with platy dark green mineral, schistosity at 45° to core axis, much carbonate.</u>						
13 - 62	<u>Carbonate rock: (intermediate volcanic rock-altered?) light green with schistosity at 45°.</u> at 17 - 2" carbonate str. at 45° to c.a. 21 - 21.5 occasional irreg. qtz. str. with rust - carbonate alteration. at 34 - 1/2" qtz. str. at 45° to c.a.						
62 - 71	<u>Schist: as above</u> at 69 - 4" rust carbonate with slight qtz.						
71 - 102	<u>Altered agglomerate: ? schistose, generally light green, with mariposite, clots of qtz.-carbonate.</u>						
102 - 132	<u>Carbonate rock and schist: carbonate is fine grained, buff coloured, schist is green with chlorite.</u> at 116 - 2" qtz. - tourmaline str. at 120 - 5" irregular qtz. tourmaline						
132 - 310	<u>Chlorite Schist: (altered intermediate volcanic?) with fine disseminated hematite.</u> 233 - 295 amygdaloidal structure and green platy mineral						

Drilled By CONTINENTAL

Signed [Signature]

N



P57333
P82849

MARKAY MINING CORPORATION LIMITED
THOMAS TOWNSHIP
DRILL HOLE LOCATIONS
65-3
1" = 300'

[Signature]
July 20, 1965

DIAMOND DRILL RECORD

PROPERTY MARKAY MINING CORP. LTD. HOLE NO. 65-3

TOWNSHIP _____ PAGE NO. 1

LOCATION Line 35 East CORE LOCATION drill site STARTED July 5, 1965
Station 6 + 00 South DATUM _____ COMPLETED July 10, 1965
 BEARING _____ Az. 45° DEPTH 569.5
 ELEVATION _____ DIP 45°

DEPTH FEET	FORMATION	SAMPLE NO.	WIDTH OF SAMPLE	GOLD OZ.			
0 - 6	Casing						
6 - 52	Andesite: fine to medium grained, massive, green, carbonatized. at 25 - 1" qtz-carb. stringer at 30° to c.a. 24 - 52 - coarse grained, highly carbonatized 49 - 50 - aphanitic black dyke 67 - 70.5 - massive buff-coloured carbonate						
52 - 113	Chlorite-carbonate schist: schistosity at 45°, at least 50% carbonate, occasional conformable barren qtz-carb. stringer. at 117 - 2" carbonate stringer at 45°.						
113 - 187	Andesite-carbonate: massive yellow carbonate in bands up to 5 feet with slightly schistose andesite at 45° to c.a. 128 - 129 - irregular white carbonate in fractures. 138 - 138.5 - 5" qtz.-carb. stringer at 45° with tourmaline and pyrite.	3-1	0.5	nil			
187 - 462	Schist: (carbonatized andesitic tuff) well banded and schistose at 45° to c.a. with carbonate as stringers and clots.						

Drilled By CONTINENTAL

Signed [Signature]

DIAMOND DRILL RECORD

PROPERTY HOLE NO. 65-3

TOWNSHIP PAGE NO. 2

LOCATION CORE LOCATION STARTED

..... DATUM COMPLETED

..... BEARING DEPTH

ELEVATION DIP

DEPTH FEET	FORMATION	SAMPLE NO.	WIDTH OF SAMPLE	GOLD OZ.			
	at 249.8 - 2" qtz-carbonate stringer at 90° to c.a.						
	at 267.5 - 3" qtz-carbonate stringer at 35° to c.a. with tourmaline, slight py.						
	at 324 - 3" barren white carbonate stringer						
	at 349 - 2" " " " "						
462 - 509	<u>Fault Zone: rusty broken core, schistose and carbonatized</u>						
	478 - 480 - core lost						
	482 - 484 - " "						
	486 - 488 - " "						
	490 - 492 - " "						
	498 - 500 - " "						
	501.5 - 505 - " "						
	507 - 508 - " "						
509 - 527	<u>Andesite: fairly massive but carbonatized.</u>						
527 - 544	<u>Carbonate rock: buff coloured, fine grained, massive.</u>						
	541.5 - 544 - silicified, carbonatized, fractured, with mariposite.	3-2	2.5				
544 - 569.5	<u>Carbonate - chlorite schist:</u>						
569.5	E N D						

Drilled By CONTINENTAL

Signed T.P.