



42A07NW0214 11 THOMAS

010

Diamond Drilling

Township of THOMAS

Report No: 11

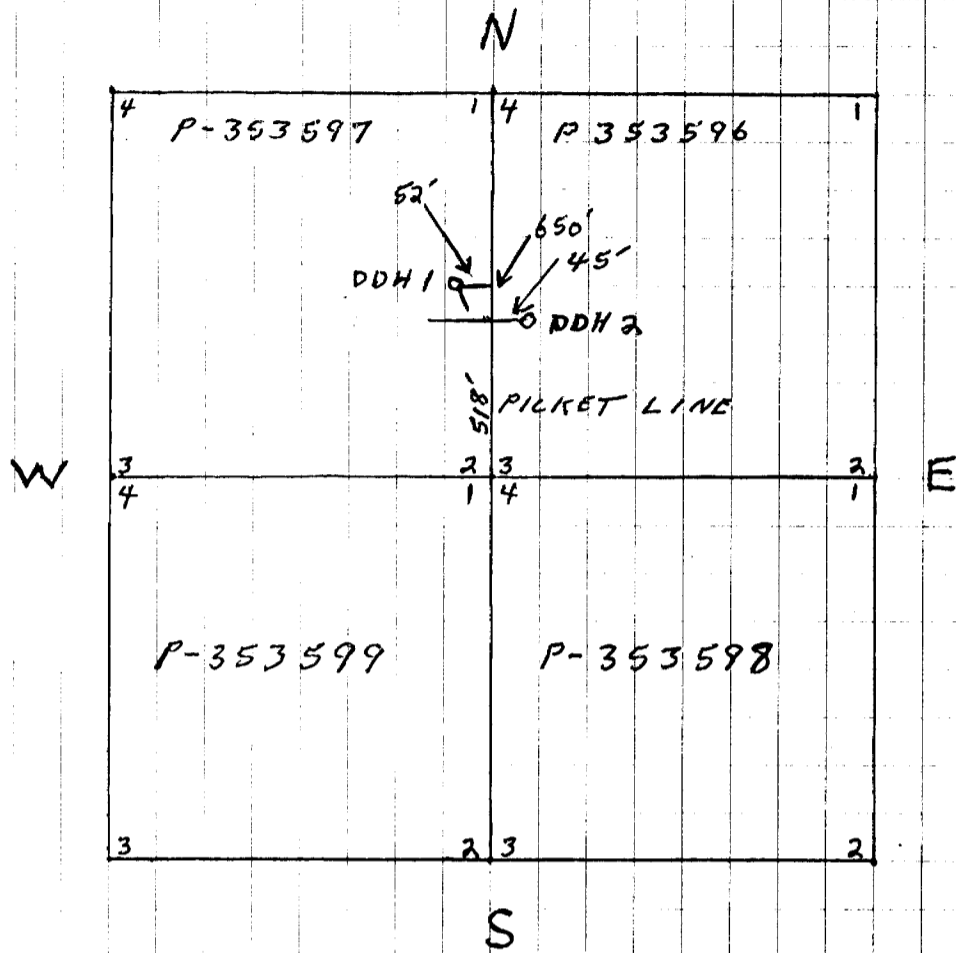
Work performed by: L.E. Hill

Claim No	Hole No	Footage	Date	Note
P. 353597	1	188'	Apr/75	(1)
P. 353596	2 $\frac{1}{2}$	171' <u> </u> 359'	May/75	(1)

Notes:

(1) 120/75

ASSESSMENT WORK DONE BY L. E. HILL
FOR CLAIMS NO. P-353596 TO 353599 INCL.
THOMAS TWP.



HOLE # 1 188'
HOLE # 2 171'

L. E. Hill
June 5/75



THE MINING ACT - DEPARTMENT OF MINES
DIAMOND DRILLING LOG

Start a new page for every new hole, but fill in top portion of form only on first page for each hole.

FILL IN ON EVERY PAGE

HOLE NO. 1 PAGE NO. 1

DRILLING COMPANY LENE HILL		COLLAR ELEVATION	BEARING OF HOLE FROM TRUE NORTH 35° SE.	TOTAL FOOTAGE 188'	DIP OF HOLE AT collar -45°	LOCATION OF HOLE IN RELATION TO A FIXED POINT ON THE CLAIM 650' N. OF NO. 2 P. CLAIM P-353597 & 52' DUE W. FROM THIS POINT TO COLLAR #1 DDH.	MAP REFERENCE NO. M-312	CLAIM NO. P-353597
DATE HOLE STARTED APRIL 24 1975	DATE COMPLETED MAY 9 1975	DATE LOGGED JUNE 3 1975	LOGGED BY LENE HILL		ft		LOCATION (Tp., Lot, Con. OR Lat. and Long.) THOMAS TWP.	
EXPLORATION CO., OWNER OR OPTIONEE		DATE SUBMITTED June 5 1975	SUBMITTED BY (Signature) <i>L.E. Hill</i>		ft		PROPERTY NAME LENE HILL	
					ft			

FOOTAGE FROM TO		ROCK TYPE	DESCRIPTION Colour, grain size, texture, minerals, alteration, etc.	PLANAR FEATURE ANGLE *	CORE SPECIMEN FOOTAGE +	YOUR SAMPLE NUMBER	SAMPLE FOOTAGE FROM TO		SAMPLE LENGTH	ASSAYS +	
0'	22'		OVERBURDEN - FINE SAND TO 18' COARSE SAND TO 20' CASINE 1 1/4" PIPE								
22'	62'	VOLCANICS	GREEN TO GRAY FINE GRAIN	30°							
62'	72'	VOLCANIC	DARK GREEN FINE GRAIN 6 3/4' TO 6 1/2' QUARTZ VEIN & MANY QUARTZ VEINS 1/8" TO 1/4" SIZE	30°							
72'	132'	DIORITE	GREEN TO GRAY FINE TO MEDIUM GRAIN CARBONATED RUSTY SECTION AT 131' 3" WIDE AND AT 132'								
132'	133'	QUARTZ	QUARTZ VEIN WITH PYRITE & CARBONATED								
133'	138'	DIORITE	GREEN TO GRAY FINE GRAIN EVEN TEXTURE								
138'	150'6"	FELDSPAR PORPHYRY	WITH QUARTZ VEINS GREEN TO GRAY WHITE & PINK WITH A LITTLE PYRITE COARSE GRAINED								
150'6"	188'	DIORITE	GREEN TO GRAY FINE GRAINED EVEN TEXTURE 2" QUARTZ VEIN AT 174' & 175' WITH A LITTLE PYRITE 6 IN. RUSTY CARBONATED ZONE AT 182'	30°							
	188'	STOP.									

* For features such as foliation, bedding, schistosity, measured from the long axis of the core.

+ Additional credit available. See Assessment Work Regulations.



THE MINING ACT - DEPARTMENT OF MINES
DIAMOND DRILLING LOG

Start a new page for every new hole, but fill in top portion of form only on first page for each hole.

THOMAS TWP. #120
LEONARD E. HILL.

FILL IN ON EVERY PAGE

HOLE NO. 2 PAGE NO. 1

DRILLING COMPANY LEN E. HILL		COLLAR ELEVATION	BEARING OF HOLE FROM TRUE NORTH DUE W.	TOTAL FOOTAGE 171'	DIP OF HOLE AT collar -45°	LOCATION OF HOLE IN RELATION TO A FIXED POINT ON THE CLAIM 518' FROM NO. 3 P CLAIM NO 353596 & 45' DUE E. TO COLLAR DDH 2.	MAP REFERENCE NO. M 312	CLAIM NO. P-353596
DATE HOLE STARTED MAY 16 1975	DATE COMPLETED MAY 28 1975	DATE LOGGED JUNE 3 1975	LOGGED BY L.E. HILL		ft		LOCATION (Tp., Lot, Con. OR Lat. and Long.) THOMAS TWP	
EXPLORATION CO., OWNER OR OPTIONEE		DATE SUBMITTED June 5 1975	SUBMITTED BY (Signature) L.E. Hill		ft		PROPERTY NAME LEN E. HILL	
					ft			
					ft			

FOOTAGE FROM TO		ROCK TYPE	DESCRIPTION Colour, grain size, texture, minerals, alteration, etc.	PLANAR FEATURE ANGLE *	CORE SPECIMEN FOOTAGE †	YOUR SAMPLE NUMBER	SAMPLE FOOTAGE FROM TO		SAMPLE LENGTH	ASSAYS +	
0'	8'		FINE SAND 0' TO 6' 1 1/4" CASING 8'								
8'	54' 6"	DIORITE	GREEN TO GRAY FINE GRAINED EVEN TEXTURE 1/2" QUARTZ VEIN AT 8' 2" " " " 13' 6" 5" " " " 17' 9" 1" " " " 21' 21' 1' CARB. RUSTY ZONE 1/2" " " " 21' 6" 1" " " " 25' 6" 1" " " " AT 28' 6" CARBONATED RUSTY ZONE 1/2" " " " 35' 1/2" " " " 42' 6" " " " " 43' 3"	45°							
54' 6"	59' 6"	FELDSPAR PORPHYRY	BROWN TO GRAY WHITE MED. GRAINED EVEN TEXTURE								
59' 6"	136'	DIORITE	GRAY TO GREEN MED. GRAIN EVEN TEXTURE	40°							
136'	171'	VOLCANICS	GREEN FINE GRAINED EVEN TEXTURE FINE PYRITE SCATTERED THROUGH CORE								
	171'	STOP.									

* For features such as foliation, bedding, schistosity, measured from the long axis of the core.

† Additional credit available. See Assessment Work Regulations.