

COMPANY BLACK PEARL MINERALS INC.

PROPERTY LANGMUIR

TWP. OR AREA LAANGMUIR

NTS

HOLE NO:

LOCATION (19 GRID) NORTHING:

EASTING:

COLLAR ELEV:

CLAIM NO: P 779606

LA97-1

LAT.

LONG.

UTM: ZONE 501200 EAST 5347825 NORTH

DATUM

DATES DRILLED: FROM July 18 TO July 29, 19 97

DRILLED BY: NOREX DRILLING LIMITED

ASSAYS BY: SWASTIKA

OVERBURDEN: 15 CASING LENGTH 15M VERTICAL DEPTH

CASING DRILLED: 15M

SHOE BITS USED: 1

CASING RECOVERED: LEFT IN HOLE

SHOE BITS RECOVERED: 0

DESCRIPTION OF OVERBURDEN:

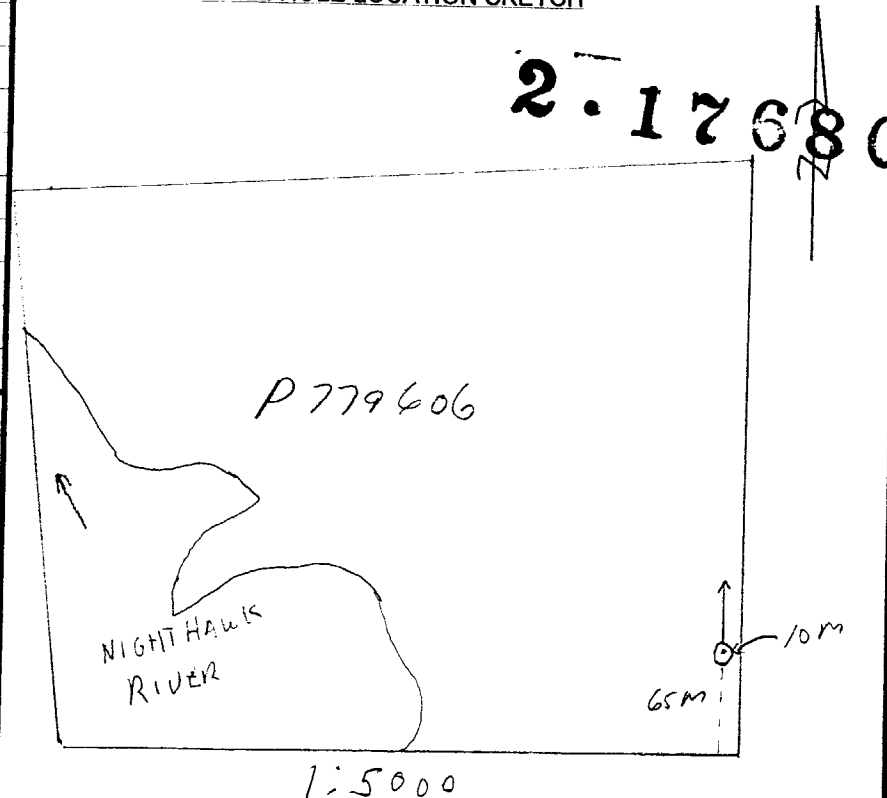
DOWN HOLE SURVEY

DEPTH	AZIMUTH	DIP
50	1.5	-42
101	5.5	-42
152	3.5	-43
200	5.5	-42
250	6.5	-44
300	6.5	-44
341	2.5	-44

COLLAR DETAILS

AZIMUTH: 0
 DIP @ COLLAR: -45
 FINAL DEPTH: 350m
 VERT. DEPTH:
 HORIZ. REACH:
 CORE SIZE: BQ
 CORE DIAMETER:
 SURFACE: ✓
 UNDERGROUND:

DRILL HOLE LOCATION SKETCH



WATER SOURCE: NIGHT HAWK RIVER LENGTH OF WATER LINE: 150M

DRILL CUTTINGS COLLECTED? NO

CORE RECOVERY: %

SPECIAL DRILLING PROCEDURES:

DRILL COLLAR MARKED BY: CASING

DRILL HOLE MAKING WATER? NO

PURPOSE OF HOLE: TEST MAFLIC VOLCANICS FOR BASE METALS

RESULTS: MINOR AMOUNTS OF SULPHUR

COMMENTS:



010

LOGGED BY: P. ATHERTON

SIGNATURE: P. Atherton

DATE: Aug 2 / 97

PAGE 1 OF 14

HOLE NO. LA97-1

ATHERTON GEOLOGICAL SERVICES

DIAMOND DRILL RECORD

COLOUR, GRAIN & FRAGMENT SIZES, MINERALOGY, SHEARING, FOLIATION, VEINING, CONTACTS, TEXTURE, SILICIFICATION

NAME OF PROPERTY

HOLE NO. LA97-1

SHEET NO. 2

INTERVAL		ROCK TYPE	SAMPLE NO.	DESCRIPTION	% SULPHIDE	SAMPLE INTERVAL			ASSAYS	
FROM	TO					FROM	TO	LENGTH	Au g/t	
0	15	0		CASING AND OVERBURDEN						
15	20.4	7mon		MONZONITE (AS BELOW)						
		7m-ss, wss ca.		15-20.4 - WEAKLY TO COARSE GRAINED, GREENISH GREY TO RED, MASSIVE FAIRLY UNIFORM TEXTURE. - WEAKLY TO MODERATELY MAGNETIC. - QUARTZ CALCIC FRACTURES - MAJOR ANGLES 45° CP - STRIKERS @ DIVERSE ANGLES 16.35-16.45 - 1-2% PY - DISSEMINATED						
20.4	22.2	7fp		20.4-22.2 - FELDSPAR PORPHYRY - REDDISH, Fg MATRIX W 0.5-1cm PHENOCRYSTS - WEAKLY MAGNETIC. - LOWER CONTACT SHARP @ 60° CP						
22.2	33.6	7mon KSPAC		22.2-33.6 - GREYISH-GREEN TO RED, FINE TO MEDIUM GRAINED, MASSIVE UNIFORM TEXTURE 28.1-28.8 - POTASSIC ALTERATION						
33.6	34.8	7fp		33.6-34.8 - FELDSPAR PORPHYRY - SIMILAR AS 20.4- 22.2 - POTASSIC ALTN.						
34.8	85	7mon		34.8- GREYISH GREEN TO PINK - FINE TO MEDIUM GRAINED - SOME IMPROJECTIONS CRYSTALS OBLITERATED BY SERICITE ALT. - WEAKLY TO NON-MAGNETIC - POTASSIC ALT. MIN MAGNETIC						

DIAMOND DRILL RECORD

COLOUR, GRAIN & FRAGMENT SIZES, MINERALOGY, SHEARING, FOLIATION, VEINING, CONTACTS, TEXTURE, SILICIFICATION

NAME OF PROPERTY

HOLE NO. LA97-1

SHEET NO. 3

INTERVAL		ROCK TYPE	SAMPLE NO.	DESCRIPTION	% SULPHIDE	SAMPLE INTERVAL			ASSAYS	
FROM	TO					FROM	TO	LENGTH	Au g/t	
		flt, my		- VAGUE FOLIATION 47.1 - 47.8 - FANED ZONE - SHEARED, MYLONITIC QUARTZ - SERICITIC STRAINERS THROUGHOUT SECTION						
		gn, py	3826	63.8 - 63.95. WHITE GN. TR PY ON MARGINS 50° CP	21%	63.5	64.0	0.5	0.62	
		gn.	3827	67.1 - 67.3. WHITE GN - BARREN - 20° CP	-	67.0	67.5	0.5	0.62 0.01	
		fr, clc	3828	72.5 - 73.2 - FRACTURED, QCS, POTASSIC ALTERATION, PERVASIVE 0 IN FRACTURES	-	72.5	73.2	0.7	0.02	
		ca, py	3829	79.7 - 81.1 - POTASSIC ALTERATION - BRICK RED 84.0 - 85.1. PY - DISSEMINATED, PERVASIVE CALCITE? - LOWER CONTACT UNAPP @ 50° CP		84.5	85	0.5	0.02	
85	93.4	2 amp m, mg		AMPHIBOLITE - MEDIUM TO COARSE GRAINED, BLuish GREY MAFIC INTRUSIVE - MASSIVE UNIFORM TEXTURE - SALT & PEPPER TEXTURE - MINOR POTASSIC ALTERATION - NON-MAGNETIC - CONTACT @ 30° CP						
92.4	93.2	7 sy	3830	SYENITE - CALCAREOUS, FINE GRAINED MASSIVE ALTERED SYENITE - PERVASIVE VEINED CALCITE - TR. PY @ CONTACT	TR	92.4	93.2	0.8	0.01	

DIAMOND DRILL RECORD

COLOUR, GRAIN & FRAGMENT SIZES, MINERALOGY, SHEARING, FOLIATION, VEINING, CONTACTS, TEXTURE, SILICIFICATION

NAME OF PROPERTY

HOLE NO. LA 92-1

SHEET NO. 4

INTERVAL		ROCK TYPE	SAMPLE NO.	DESCRIPTION	% SULPHIDE	SAMPLE INTERVAL			ASSAYS	
FROM	TO					FROM	TO	LENGTH	Au g/t	
93.2	100.5	2 amf m, mg, ep		AMPHIBOLITE 93.2-97.1 - BLuish GREY, MEDIUM GRAINED UNIFORM MASSIVE ROCK - 10% EPIDOTE TOWARDS BASE - FRACTURE CONTROLLED, PERVASIVE - POTASSIC ALT THROUGHOUT - MINOR CALCITE LINING - FRACTURE FILLING. - NON-MAGNETIC - BASE OF SECTION FAULTED						
		flt, fg, bx ep, ca		97.1-100.5 - FAULT ZONE, INTENSIVELY FRACTURED WITH MINOR BRECCIATION - EPIDOTE - FRACTURE CONTROLLED - WHITE CALCITE - FRACTURE CONTROLLED - SOME PERVASIVE Ca. - CONTACT WITH BELOW BROKEN 410						
100.5	121.3	2 fl, fg ep, st am p		BASALT - MEDIUM-DARK GREY/GREEN TO PICTACIO GREEN, FINE GRAINED FOLIATED TO MASSIVE LAYR. - foliation @ 60° - SERICITIZED - PERVASIVE - EPIDOTE - UP TO 10% - // TO FOLIATION & FRACTURE CONTROLLED - OCCASIONAL 1-2MM TO 1CM VENE FRACTURE & POTASSIC ALTERATION						
				104.85 - 105.3 - AMPHIBOLITE CONTACTS 60° CP - CALCITE FRAGMENTS, SOME POTASSIC ALTERATION PERVASIVE & ADJACENT TO CALCITE						

DIAMOND DRILL RECORD

COLOUR, GRAIN & FRAGMENT SIZES, MINERALOGY, SHEARING, FOLIATION, VEINING, CONTACTS, TEXTURE, SILICIFICATION

NAME OF PROPERTY

HOLE NO. LA97-1

SHEET NO. 5

INTERVAL		ROCK TYPE	SAMPLE NO.	DESCRIPTION	% SULPHIDE	SAMPLE INTERVAL			ASSAYS	
FROM	TO					FROM	TO	LENGTH	Au g/t	
		dia		106.2 - 106.4 - MASSIVE, UNALTERED, CONTACTS 35° CP.						
		fltz, fr		111.75 - 113.5 FRACTURED FAULT ZONE SUBROUND CHLORITIZED FRAGMENTS TO ANGULAR IN SITU FRAGMENTS CALCITE IN FRACTURES TR. PY AT THE BASE OF SECTION						
121.3	122.4	6 dia		DIORITE - MEDIUM TO COARSE GRAINED, MASSIVE GRAY TO PINKISH GRAY - RELATIVELY UNALTERED - CONTACTS UPPER 60° CP LOWER 33° CP						
122.4	134.4	2fl, fr ep, sc		BASALT - MEDIUM GRAY TO GREY GREEN FOLIATED TO MASSIVE BASALT - FINE GRAINED - FOLIATIONS DISCONTINUOUS INTERBEDDED CALCITE EPIDOTE + SERICITIC BANDS - 66° CP - POTASSIC ALTERATION - ANTICENT TO EPIDOTE VEINS, FRACTURES + CALCITE VEINS - RARE PYRITE GRAIN. - CHALCOPYRITE IN HAIRLINE FRACTURES						
		dia		124.7 - 124.9 - COARSE GRAINED DIORITE 60° CP 129.9 - 130.1 - AC ABOVE						

DIAMOND DRILL RECORD

COLOUR, GRAIN & FRAGMENT SIZES, MINERALOGY, SHEARING, FOLIATION, VEINING, CONTACTS, TEXTURE, SILICIFICATION						NAME OF PROPERTY				
INTERVAL		ROCK TYPE	SAMPLE NO.	DESCRIPTION	% SULPHIDE	SAMPLE INTERVAL			ASSAYS	
FROM	TO					FROM	TO	LENGTH	Au g/t	Cu %
134.4	144.6	2m, fg,		MASSIVE BASALT DARK GREY, FINE GRAINED MASSIVE LAVA. - VAGUELY FOLIATED @ 80° CP. - CRISS-CROSSED WITH WHITE QUARTZ CARBONATE STRINGERS - RARE CHALCOPYRITE GRAIN LOCATED IN STRINGERS - @ 40° CP. - CPY GRAINS - 137.9, 138, 140.9, 141.5, 141.8, 143.7, 143.8, 144.0 - QUARTZ/CARBONATE STRINGERS @ 50° AND 30° CP DO NOT CARRY CPY - POTASSIC ALT. W FRACTURES						
		gran		136.7-136.9 - FELSPIC INTRUSIVE						
		"		137.4-137.5 - " "						
			3831	- AS ABOVE - 2 GRAINS CPY		137.7	138.2	0.5		0.01
			3832	- " " " 5-6 " "		140.8	141.3	1.0		3.016
			3833	- " " " " " "		143.5	144.0	0.5		0.135
144.6	148.1	2fl, fg, SE ED		FOLIATED BASALT - DARK GREY WITH DARK BLEACHED SERICITIC & PISTACHIO GREEN EPIDOTE FOLIATIONS @ 60° CP - TR. PY - A FEW STRINGERS OF POTASSIC ALT.						
148.1	148.25	7mm, po		Monzonite						

DIAMOND DRILL RECORD

COLOUR, GRAIN & FRAGMENT SIZES, MINERALOGY, SHEARING, FOLIATION, VEINING, CONTACTS, TEXTURE, SILICIFICATION

NAME OF PROPERTY

HOLE NO. L197-1

SHEET NO. 7

INTERVAL		ROCK TYPE	SAMPLE NO.	DESCRIPTION	% SULPHIDE	SAMPLE INTERVAL			ASSAYS	
FROM	TO					FROM	TO	LENGTH	Au g/t	
		bas, fl.		FINE TO MEDIUM GRAINED PINK TO GRAYISH MASSIVE INTRUSIVE - 1% DIS. PY. - QUARTZ CALCITE STRINGERS 70° CP. - FINE GRAINED MATRIX WITH F.G. FELDSPAR PHENOCRYSTS. 1-2mm. 148.45 - 148.55 - mafic volcanic - same as unit from 144.6 - 148.1						
148.75	148.9	2fl, fs, cp.		FOLIATED BASALT same as 144.6 - 148.1						
148.9	154.58	7fp, fs		FELDSPAR PORPHYRY PINKISH GREY, FINE GRAINED MASSIVE INTRUSIVE - 1-2mm FELDSPAR PHENOCRYSTS. - EPIDOTE & QUARTZ CARBONATE VEINS & STRINGERS - 1% STRINGERS - 60 & 70° CP 1-2% DISSEMINATED PYRITE - RARE POTASSIC ALTERATION // TO (3) CU. - BX @ CONTACTS 50° CP.						
154.55	162.6	2fl, fs, ep		FOLIATED ANITE - DARK GREY & GREEN MASS WITH GREEN EPIDOTIZED BANDS - FRACTURE FILLINGS - FINE GRAINED - FOLIATED LAUNA. - PARTLY DEHYDRATIZED DUE TO DEHYDRATION						

DIAMOND DRILL RECORD

COLOUR, GRAIN & FRAGMENT SIZES, MINERALOGY, SHEARING, FOLIATION, VEINING, CONTACTS, TEXTURE, SILICIFICATION

NAME OF PROPERTY

HOLE NO. LA97-1

SHEET NO. 8

INTERVAL		ROCK TYPE	SAMPLE NO.	DESCRIPTION	% SULPHIDE	SAMPLE INTERVAL			ASSAYS	
FROM	TO					FROM	TO	LENGTH	Au g/t	Cu
				DIASTATIC ALTERATION - ALSO FRACTURE CONTROL						
				- 16-15% EPIDOTE IN FRACTURES & IN APPARENT FOLIATIONS						
				- FOLIATION @ 56° CP						
			3834	- 5% NYRITE - LOCALLY TO FROM-PY STRS	1	157.2	157.6	0.4	0.01	0.03
		sp	3835	162.4-162.7 - ALT-KSPAR DIS PY	1	162.2	162.6	0.4	0.01	0.13
				157.6-158.0 - PINK TO RED FINE GRAINED MASSIVE FELDSPAR PORPHYRY - CONTACTS @ 60° CP						
162.0	168.2	2m, dry fr		MASSIVE TO BRECCIATED BASALT						
				- DARK GREY TO BLACK, FINE GRAINED, MASSIVE, FRACTURED & BRECCIATED TEXTURE						
				- SUB ANGULAR INSITU FRAGMENTS SEPERATED BY WHITE QUARTZ FILLED FRACTURES TO SUB ROUND TO SUB ANGULAR FRAGMENTS IN A SILICEOUS, SERICITIZED MATRIX						
				- NON-MAGNETIC						
				- 2% NY - RARE GRAIN						
		3	3876	- TT-CPY - BEST CONCENTRATION FROM 168.5-169.0		168.5	169.0	0.5	0.01	0.08
				- 10% QTZ STRS						
				- 5% SP						
168.2	199.7	2m, fly, ep m fly, ep		MASSIVE BASALT -						
				168.2-177.1 - DARK GREY TO BLACK WITH GREEN EPIDOTE BANDS						
				- FINE GRAINED MASSIVE TO FOLIATED						

DIAMOND DRILL RECORD

COLOUR, GRAIN & FRAGMENT SIZES, MINERALOGY, SHEARING, FOLIATION, VEINING, CONTACTS, TEXTURE, SILICIFICATION

NAME OF PROPERTY

HOLE NO. 1A97-1

SHEET NO. 9

INTERVAL		ROCK TYPE	SAMPLE NO.	DESCRIPTION	% SULPHIDE	SAMPLE INTERVAL			ASSAYS	
FROM	TO					FROM	TO	LENGTH	Au g/t	
				FRACTURES & INTERSECTED w QUARTZ EPIDOTE INFILLING - 10-15% EP - MINOR CALCITE 1-2% KPAR ALT. - ORANGE TO RED						
		Sy	177.2-177.2	STENITE INTRUSIVE						
		m, fg, ep	177.5-182.2	MEDIUM TO DARK GREY, FINE GRAINED LAVU. - 10% EPIDOTE - FORMS IRREGULAR BLEDGES & LENSES - 1-2% POTASSIC ALT. - IN VEINS - ALS ANGLES TO CORE						
		Sy	182.2-182.3	STENITE INTRUSIVE						
		flt, fo, fg, ep	182.3-189.3	FAULT ZONE - INTENSELY FRACTURED CORE, CORE ANGLES FROM 100% GOOD CORE TO BADLY BROKEN UP - FRACTURE FILLING - QUARTZ, EPIDOTE - FRAGMENTS ANGULAR - BADLY BROKEN INTERVALS FRACTURE FILLING IS MORE CALCAREOUS - 1-2% POTASSIC ALTERATION						
		m, fg	189.3-199.7	MEDIUM TO DARK GREY, FINE GRAINED MASSIVE LAVU. S/D FRACTURES - QUARTZ EPIDOTE STAS. - NARROW PERVIOUS CARBONATE CALCITE INT.						

DIAMOND DRILL RECORD

COLOUR, GRAIN & FRAGMENT SIZES, MINERALOGY, SHEARING, FOLIATION, VEINING, CONTACTS, TEXTURE, SILICIFICATION							NAME OF PROPERTY				
INTERVAL		ROCK TYPE	SAMPLE NO.	DESCRIPTION	% SULPHIDE	SAMPLE INTERVAL			ASSAYS		
FROM	TO					FROM	TO	LENGTH	Au g/t	Cu %	
				WHICH TEND TO BE PALE GREEN - MINOR < 1% POTASSIC ALTERED VEINLET - TR. PYRITE - RARE GRAIN - CALCOPYRITE - OCCASIONAL GRAIN 192.2, 195.6, 196.7, 199.1 - POOR CORE CONDITION - HARDLY BROKEN UP TOWARDS BASE OF SECTION - LOWER CONTACT FAULTED @ 40' CP							
199.7	201.0	5b, f1	3837	GREYWACKE - MEDIUM GRAY, FOLIATED SEDIMENT - FOLIATED @ // TO CORE AXIS - 1% FINE DISSEMINATED PY. + VEINLETS - INTENSE PERVASIVE CALCITE - VEIN INTERSECTED BY CALCITE VEINS 1-2mm TO 1cm - LOWER CONTACT FAULTED	1%	199.7	201.0	1.3	0.01	0.01	
201.0	202.5	6 U, mg cbt2,	3838	ULTRAMAFIC - BLUISH GRAY, MEDIUM TO COARSE GRAINED, ULTRAMAFIC INTRUSIVE - EXTREMELY CHLORITIC + TALCUSE - INTENSELY CARBONATIZED, PERVASIVE 1mm QUARTZ CALCITE STR. THAT INTERSECT CORE IN ALL DIRECTIONS LIT. TO 1% FINE DISSEMINATED PYRITE - LARGE PATCH PERRHOTITE @ BASE OF SECTION CONTACT ZONE	1%	201.0	202.5	1.5	0.05	0.005	
			3839		1%	202.5	204.0	1.5	0.01	0.01	

DIAMOND DRILL RECORD

COLOUR, GRAIN & FRAGMENT SIZES, MINERALOGY, SHEARING, FOLIATION, VEINING, CONTACTS, TEXTURE, SILICIFICATION

NAME OF PROPERTY

HOLE NO.

SHEET NO. //

INTERVAL		ROCK TYPE	SAMPLE NO.	DESCRIPTION	% SULPHIDE	SAMPLE INTERVAL			ASSAYS				
FROM	TO					FROM	TO	LENGTH	Ag	Cu%	Zn%	Pb%	
202.5	212.6	2fl, m, fg		FOLIATED TO MASSIVE BASALT GREEN TO DARK GREY/GRN, FINE GRAINED MAINLY FOLIATED BASALT. - 10% EPIDOTE LENSES, BERRS & STRAINERS BLEBS & LENSES SUB PARALLEL TO // TO FOLIATION WHICH IS AT 60° CP. - QUARTZ EPIDOTE + QUARTZ EPIDOTE VEINETS @ 70° CP, 15° CP, 30° CP - 1-2% POTASSIC ALTERATION									
		fl, gcb		210.7-211 - FAULT ZONE - BRECCIA sol. QUARTZ CALCITE									
		fl, gca		213.8-213.9 - AS ABOVE gca 60° CP									
212.6	341.0	2m, fg, vc		MASSIVE BASALT - DARK GREY TO GRAY/GRN, FINE GRAINED MASSIVE LAV. - EPIDOTE 1-2% - IN MINOR VEINS AND FRACTURES - 50-60° CP - 1% OXYRITE - VERY RARE - ST. WHITE QCB VEINS 40°-70° CP 0.5cm									
			3840	224-222.9 - VARIGLITIC - SHOULDER SAMPLE TO BELOW	TR	240.45	240.95	0.5	0.5	0.013	0.027		
			3841	240.95-240.96 - PATCH OF SPHALERITE IN 2cm QUANTZ CALCITE VEIN - 40° CP. 241.5-241.6 - 1cm gca - PATCH SPH	2.3%	240.85	241.6	0.85	0.13	0.608	6.127		
			3842	SHOULDER TO BELOW	TR	241.6	242.0	0.4	1.0	0.023	0.008		
			3843	2mm VEINLET - calc, msp, gal, sph. 35° cp.					0.5	0.016	0.016		0.016

DIAMOND DRILL RECORD

NAME OF PROPERTY LANGMUR

HOLE NO. SHEET NO. 12

COLOUR, GRAIN & FRAGMENT SIZES, MINERALOGY, SHEARING, FOLIATION, VEINING, CONTACTS, TEXTURE, SILICIFICATION

INTERVAL		ROCK TYPE	SAMPLE NO.	DESCRIPTION	% SULPHIDE	SAMPLE INTERVAL			ASSAYS			
FROM	TO					FROM	TO	LENGTH		A _g Au/gt	Cu %	Zn %
		fl		245.6 - 245.9 - BRECCIATED, FRACTURED, NO SULPHIDES. - 10% - Bcb								
		p, fg		249.8 - 250.9 - FINE GRAINED, CHLORITIC PILLOW SELVAGES								
		fl, bx, ca	3844	256.7 - 257.3 - FAULT ZONE - INTENSELY FOLIATED @ 60° (L) - A COUPLE PATCHES CPY	1%	256.7	257.3	0.6		3.019		
		fl, bx, ca cpy	3845	257.55 - 257.7 - FOLIATED, BX - 1% CPY	2%	257.3	257.7	0.4		0.097		
		p, fg sr		262.5 - 263.4 UNRIOLITIC PILLOW LAVA FINE GRAINED, GLASSY 1-2m VARIOLLES LIPOPYRRE DISSEMINATED - SELVAGES CHLORITIC, CARBONATED								
		sph, cpy gal	3846	264.27 - 264.79 - 2cm RPY, sph, py - 2cm SULPHIDE 50° CP. - NARROW STRINGERS W CPY IN SAMPLES	5%	264.5	265.2	0.6	1.0	0.007	1.50	
		alt		273.4 - 274.5 - QUARTZ CARBONATE EPIDOTE ALTERATION POSSIBLE ALTERATION - ALL FRACTURE CONTROLLED								
		fl, bx po	3847	281.5 - 281.6 FAULT BRECCIA - SUB ROUND FRAGMENTS IN A QUARTZ CARBONATE MATRIX. - 5% po IN MATRIX AS CLERS.						Au 91+ 0.01		

pb

DIAMOND DRILL RECORD

COLOUR, GRAIN & FRAGMENT SIZES, MINERALOGY, SHEARING, FOLIATION, VEINING, CONTACTS, TEXTURE, SILICIFICATION

NAME OF PROPERTY

HOLE NO.

SHEET NO. 13

INTERVAL		ROCK TYPE	SAMPLE NO.	DESCRIPTION	%	SAMPLE INTERVAL			ASSAYS						
FROM	TO					FROM	TO	LENGTH	Au g/t	Ag g/t	Cu %	Mo	Zn		
		gran, alk		288.4 - 288.5 - GRANITE INT., POTASSIC ALTERATION											
		fr qtz, cpy		300.9 - 308.45 - MASSIVE FRACTURED, - FRACTURES INFILL IN QUARTZ CARBONATE & QUARTZ EPIDOTE. - TO PYRITE - A.M. - MAGNETIC											
		cpy, m, fg, py	3848	302.75 - CRYSTALS IN LACER WITHIN seq. 308.45 - 309.4 - MASSIVE UNIFORM TEXTURE CONTACTS FOLIATED, SILICIFIED, CARBONATIZED - 1-2% FINE DISSEMINATED PYRITE - CONTACTS @ 70° CP.	1-2	308.45	309.4	0.95	NIL		0.008				
		m, fg, vr		309.4 - 315.3 - DARK GREY, FINE GRAINED, VARIOLITE MASSIVE LAVA											
		fl, bx cpy, Mo	3849	315.3 - 316.2 - FAULT BRECCIA - ANCHOR TO SUB ROUNDED FRAGMENTS IN SILICIFIED CARBONATED CALORITIC MATRIX, CONTACTS ABOVE QTZ CALCITE & LARGE PATCH OF MOSE - Cpy DISSEMINATED THROUGHOUT - Qc - 1-2mm INTERSECT CORE @ 50° CP.	1-2	315.3	316.2	0.9	NIL	1.1	0.066				
		fl, dx sil.		321.75 - 321.9 - ANCHOR VOLCANIC FRAGMENTS IN A WHITE QTZ CARBONATE MATRIX - 2% Cpy. SMALL CLUSTERS ON BORDERS OF LITHIC FRAGS - CUTS CORE @ 50° CP.											

DIAMOND DRILL RECORD

COLOUR, GRAIN & FRAGMENT SIZES, MINERALOGY, SHEARING, FOLIATION, VEINING, CONTACTS, TEXTURE, SILICIFICATION						NAME OF PROPERTY					
INTERVAL		ROCK TYPE	SAMPLE NO.	DESCRIPTION	%	SAMPLE INTERVAL			ASSAYS		
FROM	TO				SULPHIDE	FROM	TO	LENGTH	Au g/t	Ag g/t	Cu %
		m, mg		322.2 - 322.9 - MASSIVE MEDIUM GRAINED - GRAYISH GREEN - UNIFORM TEXTURE - 17. FINE DISSEMINATED PYRITES - QUARTZ CALCITE VEIN @ BASE OF SECTION CONTAINS 50° CP.							
		geo, min, spx	3850	327.85 - 328.5 - WHITE QUARTZ CALCITE VEIN MASSIVE WITH 30% LITHIC FRAGMENTATION + BANDS - ANGLE TO SUBSTRATE - CONTACTS 60° CP. - 5% MoS ₂ - FRACTURE FILLINGS & PATCHES < 17. CPY - SMALL GRAINS ON MARGINS OF VEIN					0.03	1.8	2.0%
				328.55 - 341 - MASSIVE & FRACTURED, DARK GREY TO BLACK - NUMEROUS QUARTZ CARBONATE STRAINERS 55° CP MoS ₂ SEEN IN QUARTZ CALCITE FILLED FRACTURES @ 322.24 - 324.11 334.25 - 334.92 335.36 - 336.22							
				SPH - ' @ 330.54 - 331.62							
				CPY - ' @ 345.1 + 346.15							
				341 EOK							

MoS₂

3.0%

DIAMOND DRILL RECORD

COLOUR, GRAIN & FRAGMENT SIZES, MINERALOGY, SHEARING, FOLIATION, VEINING, CONTACTS, TEXTURE, SILICIFICATION

NAME OF PROPERTY LANGMuir
 HOLE NO. LA97-1 SHEET NO. 2

INTERVAL		ROCK TYPE	SAMPLE NO.	DESCRIPTION	% SULPHIDE	SAMPLE INTERVAL			ASSAYS	
FROM	TO					FROM	TO	LENGTH	Au g/t	
0	60	S		OVERBURDEN & CASING						
60	103.8	1 per fg, m.		ULTRAMAFIC PERIDOTITE DARK GREY/GREEN TO BLuish BLACK, FINE TO MEDIUM GRAINED, MASSIVE LAVA - SERPENTINIZED IN DARKER INTERSECTIONS - PERSUASIVE FOLIATION 30° CP. - MODERATELY TO STRONGLY MAGNETIC. - RARE PYRITE BADLY BROKEN UP - RQD 0-5						
		fltz, ch +		87.7-88- TALCY, CHLORITIC, FAULT ZONE - BRECCIATED						
103.8	105.5	G gab		GABRO INTRUSIVE - SALT & PEPPER, COARSE GRAINED, MASSIVE TEXTURE. - BADLY BROKEN UP - RQD 0						
105.5	112	1 per		PERIDOTITE DARK GREY/GREEN TO BLuish BLACK FINE GRAINED MASSIVE LAVA - SERPENTINIZED - STRONGLY MAGNETIC - FOLIATED @ 35° CP. - PERSUASIVE CHLORITE - IN RIMS OF POLYGENS WITH MAGNETITE 108.5-110- FAULT BRECCIA - ROUNDED TO SUBROUNDED ULTRAMAFIC FRAGMENTS IN A CHLORITE MUD MATRIX 66% RECOVERY						
		fltz, br								

DIAMOND DRILL RECORD							NAME OF PROPERTY <i>LANCUM R</i>			
COLOUR, GRAIN & FRAGMENT SIZES, MINERALOGY, SHEARING, FOLIATION, VEINING, CONTACTS, TEXTURE, SILICIFICATION							HOLE NO. <i>1A97-2</i>			
INTERVAL		ROCK TYPE	SAMPLE NO.	DESCRIPTION	% SULPHIDE	SAMPLE INTERVAL			ASSAYS	
FROM	TO					FROM	TO	LENGTH	Au g/t	
		<i>Skz, ch,</i>		<i>110.5 - 113.7 - CHLORITIC SHEAR ZONE - SEAM PLANES - SERPENTINIZED, CHLORITIZED - RQD - 0 - BADLY BROKEN UP</i>						
<i>122.0</i>	<i>122.5</i>	<i>6 gab</i>		<i>GABBRO INTRUSIVE - SAME AS 103.8 - 105.5 - UPPER CONTACT @ 50° CP.</i>						
<i>122.5</i>	<i>157.7</i>	<i>1 per</i>		<i>ULTRAMAFIC PERIDOTITE - DARK GRAY TO BLuish BLACK - CHLORITIC SEAMS OR LATHES (CHICKEN - TRACK) - MORE SERPENTINIZED WITH 1cm SEAMS CROSS CUTTING THE FOLIATION WHICH IS 70° CP. - MORE COARSE GRAINED THAN PREVIOUS INTERSECTIONS - PYRITE OCCURS AS RARE CUBES & IN d // TO SCHISTOSITY & SLEAKS</i>						
<i>157.7</i>	<i>183.2</i>	<i>2 Km to 2 m</i>		<i>BASALTIC KOMATIITE TO MAGNESIAN RICH BASALTS - BLuish BLACK, FINE GRAINED MASSIVE LAVA - NON MAGNETIC - EASILY SCRATCHED - SOFTER THAN PREVIOUS INTERSECTIONS - GREENISH SERPENTINE FILLED FRACTURES <i>157.7 - 158.1 - FAULT BRECCIA - ULTRAMAFIC FRAGMENTS IN A CHLORITE MUD MATRIX. UPPER CONTACT 50° CP.</i></i>						

DIAMOND DRILL RECORD

COLOUR, GRAIN & FRAGMENT SIZES, MINERALOGY, SHEARING, FOLIATION, VEINING, CONTACTS, TEXTURE, SILICIFICATION

NAME OF PROPERTY LANGMUIR

HOLE NO. LA97-2

SHEET NO. 4

INTERVAL		ROCK TYPE	SAMPLE NO.	DESCRIPTION	% SULPHIDE	SAMPLE INTERVAL			ASSAYS		
FROM	TO					FROM	TO	LENGTH	Au g/t		
183.2	183.8	6gab		GABRO INTRUSIVE SAME AS 122.0 TO 122.5 - CONTACTS GROUND OUT							
183.8	204.8	2m, mgo fr,		MAGNESIUM RICH BASALT - DARK GREY TO BLACK, FINE GRAINED MASSIVE LAVA. - MINOR FRACTURING - CALCAREOUS INFILLING - < 1% PYRITE - WIDELY SCATTERED PYRITE CLUSTERS. - NON MAGNETIC. RQD - 75 - CORE IS OFTEN FRACTURED & BROKEN UP 240-204.8 - FRACTURED WITH CALCITE INFILLS - MINOR PYRITE.							
204.8	222.2	2m, fe		IRON RICH BASALT MEDIUM TO DARK GREY TO BLACK, MASSIVE LAVA, FINE GRAINED - MODERATE TO WEAKLY MAGNETIC - WEAKLY CARBONATED - MAINLY IN HAIRLINE FRACTURES, RARE INTERNAL VENERS CALCITE IS PERSISTENT. - BADLY BROKEN UP - RQD 30-50							
222.2	222.9	2fl, altz		FOLIATED, ALTERED BASALT MEDIUM GRAY TO LIGHT GRAY FOLIATED LAVA - PROBABLE ALTERATION ZONE							

DIAMOND DRILL RECORD

COLOUR, GRAIN & FRAGMENT SIZES, MINERALOGY, SHEARING, FOLIATION, VEINING, CONTACTS, TEXTURE, SILICIFICATION

NAME OF PROPERTY *Langmuir*

HOLE NO. *LA97-2*

SHEET NO. *5*

INTERVAL		ROCK TYPE	SAMPLE NO.	DESCRIPTION	% SULPHIDE	SAMPLE INTERVAL			ASSAYS	
FROM	TO					FROM	TO	LENGTH	Au g/t	Cu %
				FOLIATIONS @ 45 TO 50°C - MINOR K SPAR ALTERATION IN VEINS // TO FOLIATION + @ 60° TO FOLIATION - WEAK PORPHYRITIZATION - 1-2m to 1cm WIDE BANDS // TO FOLIATIONS - AMPHIBOLITE RICH FOLIATIONS - LIGHTER COLOUR DUE TO ALBITIZATION PYRITE < 1% - RESTRICTED TO PYRITE RICH BANDS // TO FOLIATIONS - NON-MAGNETIC						
272.9	306.1	2877		MAFIC VOLCANIC - (AMPHIBOLITE) - COARSE GRAINED, MEDIUM TO DARK GREY MASSIVE TO FOLIATED LAVA - ALTERATION - EPIDOTE, AMPHIBOLITE PORPHYRITIZATION - ALBITIZED - SERICITIZED ADJACENT TO FRACTURES - NON CARBONATED TO WEAKLY CARBONATED - FRACTURE FILLINGS OF PERVASIVE CALCITE < 1% PYRITE - PYRITE RICH FOLIATED BANDS - NON-MAGNETIC TO WEAKLY MAGNETIC - PORPHYRITIZATION EXTENSIVE THROUGHOUT FELDSPATHIC & HORNBLENDE. GIVES IT A SALT-PEPPER TEXTURE IN PLACES 5% EPIDOTE - PERVASIVE & FRACTURE CONTROLLED						
			3867	288.75 - 289.2 - 5% PYRITE - DISSEMINATED + IN FOLIATIONS	5%	288.75	289.2	0.95	NIL	0.058

DIAMOND DRILL RECORD

COLOUR, GRAIN & FRAGMENT SIZES, MINERALOGY, SHEARING, FOLIATION, VEINING, CONTACTS, TEXTURE, SILICIFICATION

NAME OF PROPERTY LANGMUIR
 HOLE NO. L097-2 SHEET NO. 6

INTERVAL		ROCK TYPE	SAMPLE NO.	DESCRIPTION	% SULPHIDE	SAMPLE INTERVAL			ASSAYS	
FROM	TO					FROM	TO	LENGTH	Au g/t	Cu %
306.1	307.2	Ggab		GABBRO COARSE GRAINED, GRAY TO WHITISH GREY MASSIVE - CONTACTS - UPPER 60° CP LOWER 70° CP						
307.2	310.4	2am, 2fg ep		AMPHIBOLITE DARK GREY GREEN, COARSE GRAINED, 1-2% EPIDOTE. - LARGE HOENESCHÉ CRYSTALS UP TO 4MM - PORPHYRITIZED						
310.4	311.0	7gran		GRANITIC INTRUSIVE - 2 - PINK, COARSE GRAINED, MASSIVE - CONTACTS UPPER 30° CP LOWER 20° CP						
311.0	326	2am, 2fg		AMPHIBOLITE - DARK GREY TO BLACK, FINE TO COARSE GRAINED - MASSIVE TO FOLIATED - KSPAR ALTERATION - BRICK RED - FRACTURE CONTROLLED 70° CP						
		per, ca	3268	311.5-312.1 - FINE GRAINED, PERVASIVE CALCITE STRONG REACTION TO HCL	0.5	311.0	312.6	1.6	NIL	0.019
		fr, ca		312.3-312.4 - FRACTURED, CALCITE 0.5% PY						
		sl, py ca	3269	312.6-313.55 / CR BU 0.5° CP - SL PY, Fg VOLC, BASE OF SECTION FAULT @ 55° CP	0.95	312.6	313.55	0.95	NIL	0.038
		fl, 2, ch fl	3272	312.55-315 - FOLIATED, CHLORITE, FAULT ZONE, FOLIATED @ 110° CP	1.45	312.55	318.0	1.45	NIL	0.031

DIAMOND DRILL RECORD

COLOUR, GRAIN & FRAGMENT SIZES, MINERALOGY, SHEARING, FOLIATION, VEINING, CONTACTS, TEXTURE, SILICIFICATION

NAME OF PROPERTY LANGHEIR

HOLE NO. LA97-1

SHEET NO. 7

INTERVAL FROM	TO	ROCK TYPE	SAMPLE NO.	DESCRIPTION	%	SAMPLE INTERVAL			ASSAYS		
						SULPHIDE	FROM	TO	LENGTH	Au g/t	Cu %
			3871	MASSIVE, COARSE GRAINED 3M ESK	3.5		2.6	5	1.5	NIL	3.009

COMPANY BLACK PEARL MINERALS INC.

TWP. OR AREA LANGMUIR

NTS

HOLE NO:

PROPERTY LANGMUIR

CLAIM NO: P. 779605

LA97-3

LOCATION (19 GRID) NORTHING:

EASTING:

COLLAR ELEV: 0

DATUM

LAT. LONG.

UTM:ZONE

EAST 500610

NORTH 5347335

DATES DRILLED: FROM August 6 TO August 7 .1997

DRILLED BY: NOREX DRILLING LIMITED

ASSAYS BY: SWASTIKA LABORATORIES

OVERBURDEN: CASING LENGTH 77 VERTICAL DEPTH 77

CASING DRILLED: 29 SHOE BITS USED:

CASING RECOVERED: 29 SHOE BITS RECOVERED:

DESCRIPTION OF OVERBURDEN:

DOWN HOLE SURVEY

COLLAR DETAILS

DEPTH AZIMUTH DIP

AZIMUTH: -

DIP @ COLLAR: -96

FINAL DEPTH: 101

VERT. DEPTH: 101

HORIZ. REACH:

CORE SIZE: BQ

CORE DIAMETER:

SURFACE: ✓

UNDERGROUND:

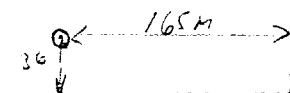
DRILL HOLE LOCATION SKETCH



2.17680

P 779605

LA97-3



WATER SOURCE: NIGHT HAWK RIVER

LENGTH OF WATER LINE: 1500

DRILL CUTTINGS COLLECTED?

CORE RECOVERY: %

SPECIAL DRILLING PROCEDURES:

DRILL COLLAR MARKED BY: CORING

DRILL HOLE MAKING WATER?

PURPOSE OF HOLE: TEST UTEM CONDUCTOR

RESULTS:

COMMENTS: RESULTS OF THIS HOLE COMBINED TO LA97-2 SHOW UTEM CONDUCTOR TO HAVE CULTURAL SOURCE.

LOGGED BY: P. ATHERTON

SIGNATURE: P. Atherton

DATE: August 18/97

PAGE 1 OF 4

HOLE NO. LA97-3

DIAMOND DRILL RECORD

COLOUR, GRAIN & FRAGMENT SIZES, MINERALOGY, SHEARING, FOLIATION, VEINING, CONTACTS, TEXTURE, SILICIFICATION

NAME OF PROPERTY LANGMUIK

HOLE NO. LA97-3

SHEET NO. 2

INTERVAL		ROCK TYPE	SAMPLE NO.	DESCRIPTION	% SULPHIDE	SAMPLE INTERVAL			ASSAYS	
FROM	TO					FROM	TO	LENGTH	Au g/t	
0	29	0		OVERBURDEN & CASING						
29	51.3	1 PER		ULTRAMAFIC KOMATIITE						
		1 per sq		29-51.5 PERIODOTIC KOMATIITE						
				BLACK TO BLuish black, FINE GRAINED						
				MASSIVE LAVA, < 1% PYRITE - RARE						
				- WEAKLY CARBONATED						
				- STRONGLY MAGNETIC						
				- SERPENTINIZED						
				- CRISS CROSSED WITH CHLORITIC						
				FRACTURES & VEINETS - DARK GREY TO						
				BLACK						
				- SEVERAL PREFERRED ANGLES 50°, 70°						
				20° CP						
				- FRACTURES @ 70° CP INTERSECTED						
				BY OTHER TWO						
				44.7m FAULT - CHLORITIC MUD GROUND out						
				50.1 m						
				- RQD 50 - POOR CORE & RECOVERY						
		1 PER, SQ		51.5-74.85 - SERPENTINIZED PERIODOTIC						
				KOMATIITE						
				- DARK GREY TO BLACK, SERPENTINIZED						
				ULTRAMAFIC						
				- MASSIVE IN CHLORITIC FRACTURES						
				AC ABOVE						
				- PITTED ALONG FRACTURES						
				- MODERATELY MAGNETIC						
				- RARE PYRITE						
				- 52-53 - LEFT CORE						
				- RQD 30-40 - POOR CORE & RECOVERY						

DIAMOND DRILL RECORD

COLOUR, GRAIN & FRAGMENT SIZES, MINERALOGY, SHEARING, FOLIATION, VEINING, CONTACTS, TEXTURE, SILICIFICATION

NAME OF PROPERTY Langmuir
 HOLE NO. L49-3 SHEET NO. 3

INTERVAL		ROCK TYPE	SAMPLE NO.	DESCRIPTION	% SULPHIDE	SAMPLE INTERVAL			ASSAYS	
FROM	TO					FROM	TO	LENGTH	Au g/t	
		<u>Green fltz</u>		<u>76.85-89.3 - FAULT ZONE - MEDIUM TO DARK GREY, FRACTURED TO RECCATED CORE.</u> - CALCITE INFILLED FRACTURES - FRAGMENTS INTENSELY CHLORITIZED IN A CALCITE MATRIX TO 842 - MATRIX CHLORITIC AND TO ANGULAR TO SUB ANGULAR FRAGMENTS - INTENSELY CHLORITIC TO BASE OF SECTION <u>10.20% RQP</u>						
<u>89.3</u>	<u>91.5</u>	<u>7 GRN</u>		<u>GRANITIC INTRUSIVE</u> - COARSE GRAINED, SLIGHTLY PINK - RQP - 0 - BADLY GROUND UP.						
<u>91.5</u>	<u>93.3</u>	<u>1 PER</u>		<u>ULTRAMAFIC KOMATIITE</u>						
		<u>fltz</u>		<u>91.5 - 92.0 - FAULT ZONE - SAME AS 76.85-89.3</u> <u>RQP 0</u>						
		<u>cb, scrp</u>		<u>92.0 - 93.3 - CALCULATED, PERVASIVE CALCITE FOLIATED @ 20° CP. - MEDIUM TO DARK GREY</u> <u>LOWER CONTACT</u> <u>RQP 50</u>						
<u>93.3</u>	<u>99.0</u>	<u>2m, fg</u>		<u>MAGNESIUM RICH TROCTOLITE</u> <u>DARK GREY TO BLACK, FINE GRAINED MASSIVE LAYER.</u> - NON MAGNETIC						

DIAMOND DRILL RECORD

NAME OF PROPERTY LANGMUIR

HOLE NO. LA97-3

SHEET NO. 4

COLOR, GRAIN & FRAGMENT SIZES, MINERALOGY, SHEARING, FOLIATION, VEINING, CONTACTS, TEXTURE, SILICIFICATION

INTERVAL		ROCK TYPE	SAMPLE NO.	DESCRIPTION	%	SAMPLE INTERVAL			ASSAYS	
FROM	TO					FROM	TO	LENGTH	Au g/t	
				RARE PYRITE						
				QUARTZ CALCITE VEINETS @ 80° CP +						
				50° CP.						
				- ROD 60-70						
99.0	101.0	1 P.128		PERIODIC KIMBERLITE						
				BLACK TO DARK GRAY, FINE TO						
				MEDIUM GRAINED						
				- MAGNETIC						
				- THIN PYRITE ALONG FOLIATIONS (17).						
				- ROD 60-70						
				101 EDH						



Ministry of Northern Development and Mines

Amendment

Declaration of Assessment Work Performed on Mining Land

Transaction Number (office use)
 W9760.00325
 Assessment Files Research Imaging

Mining Act, Subsection 65(2) and 66(3), R.S.O. 1990

Personal information collected under the Access to Information Act, the information is for the use of the Ministry of Northern Development and Mines. For more information, contact the Ministry of Northern Development and Mines, 6th Floor, 933 Ramsey Lake Road, Toronto, Ontario M5P 1S6.



42A07SW0014 2.17680 LANGMUIR

900

3) of the Mining Act. Under section 8 of the Act and correspond with the mining land holder. Northern Development and Mines, 6th Floor,

- Instructions:**
- For work performed on Crown Lands before recording a claim, use form 0240.
 - Please type or print in ink.

1. Recorded holder(s) (Attach a list if necessary)

Name <u>DAVE MEUNIER</u>	Client Number <u>169976</u>
Address <u>403 DOME ST. P.O. Box 1624</u>	Telephone Number <u>705-235-5426</u>
<u>SOUTH PORCUPINE, ONT. P0N 1H0</u>	Fax Number
Name	Client Number
Address	Telephone Number
	Fax Number

2. Type of work performed: Check (✓) and report on only ONE of the following groups for this declaration.

- Geotechnical: prospecting, surveys, assays and work under section 18 (regs)
 Physical: drilling, stripping, trenching and associated assays
 Rehabilitation

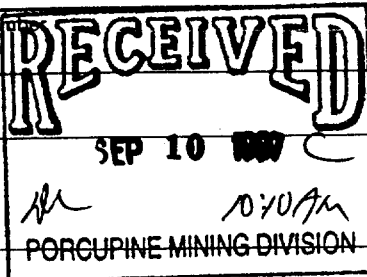
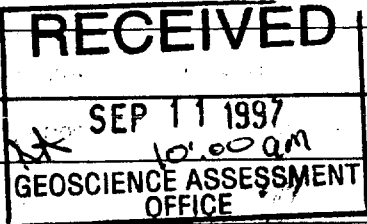
Work Type <u>DIAMOND DRILLING</u> <u>ASSAYS</u>	Office Use
	Commodity
Dates Work Performed From <u>17</u> <u>07</u> <u>97</u> To <u>18</u> <u>08</u> <u>97</u> Day Month Year Day Month Year	Total \$ Value of Work Claimed <u>\$ 43,230</u>
Global Positioning System Data (if available)	NTS Reference
Township/Area <u>LANGMUIR</u>	Mining Division <u>Porcupine</u>
M or G-Plan Number <u>G-3226</u>	Resident Geologist District <u>Timmins</u>

- Please remember to:
- obtain a work permit from the Ministry of Natural Resources as required;
 - provide proper notice to surface rights holders before starting work;
 - complete and attach a Statement of Costs, form 0212;
 - provide a map showing contiguous mining lands that are linked for assigning work;
 - include two copies of your technical report.

2-17680

3. Person or companies who prepared the technical report (Attach a list if necessary)

Name <u>PETER G. ATHERTON</u> ATHERTON GEOLOGICAL SERVICES	Telephone Number <u>705-235-5846</u>
Address <u>Box 372 Porcupine, Ont. P0N 1C0</u>	Fax Number <u>705-235-5094</u>
Name	Telephone Number
Address	Fax Number
Name	Telephone Number
Address	Fax Number



4. Certification by Recorded Holder or Agent

I, PETER G. ATHERTON (Print Name), do hereby certify that I have personal knowledge of the facts set forth in this Declaration of Assessment Work having caused the work to be performed or witnessed the same during or after its completion and, to the best of my knowledge, the annexed report is true.

Signature of Recorded Holder or Agent <u>Peter G. Atherton</u>	Date <u>Dec. 09/97</u>
Agent's Address <u>P.O. Box 372 Porcupine, Ont</u>	Telephone Number <u>705-235-5846</u>
	Fax Number <u>705-235-5094</u>

5. Work to be recorded and distributed in this declaration, to be eligible for assignment to contiguous claims, must be performed on the mining land where work was performed, at the time work was performed. A map showing the contiguous link must accompany this form.

Mining Claim Number. Or if work was done on other eligible mining land, show in this column the location number indicated on the claim map.	Number of Claim Units. For other mining land, list hectares.	Value of work performed on this claim or other mining land.	Value of work applied to this claim.	Value of work assigned to other mining claims.	Bank. Value of work to be distributed at a future date.
eg TB 7827	16 ha	\$26,825	N/A	\$24,000	\$2,825
eg 1234567	12	0	\$24,000	0	0
eg 1234568	2	\$8,892	\$4,000	0	\$4,892
1	SEE ATTACHED LIST				
2					
3					
4					
5					
6					
7					
8					
9					
10					
11					
12					
13					
14					
15					
Column Totals					

I, PETER G. ATHERTON, do hereby certify that the above work credits are eligible under subsection 7 (1) of the Assessment Work Regulation 6/96 for assignment to contiguous claims or for application to the claim where the work was done.

Signature of Recorded Holder or Agent Authorized in Writing: [Signature] Date: AUG 20/97

6. Instructions for cutting back credits that are not approved.

Some of the credits claimed in this declaration may be cut back. Please check (✓) in the boxes below to show how you wish to prioritize the deletion of credits:

- 1. Credits are to be cut back from the Bank first, followed by option 2 or 3 or 4 as indicated.
- 2. Credits are to be cut back starting with the claims listed last, working backwards; or
- 3. Credits are to be cut back equally over all claims listed in this declaration; or
- 4. Credits are to be cut back as prioritized on the attached appendix or as follows (describe):

Note: If you have not indicated how your credits are to be deleted, credits will be cut back from the Bank first, followed by option number 2 if necessary.

For Office Use Only

Received Stamp	Deemed Approved Date	Date Notification Sent
	Date Approved	Total Value of Credit Approved
Approved for Recording by Mining Recorder (Signature)		

W9760.00325

MINING CLAIM #	UNITS	VALUE OF WORK PERFORMED ON CLAIM	VALUE OF WORK APPLIED	VALUE OF WORK ASSIGNED	BANK
P 753439 -	1		\$800.00 ✓		\$0.00
P 753440 -	1		\$800.00 ✓		\$0.00
P 753441 -	1		\$800.00 ✓		\$0.00
P 779596 -	1		\$400.00 ✓		\$0.00
P 779597 -	1		\$400.00 ✓		\$0.00
P 779598 -	1		\$400.00 ✓		\$0.00
P 779599 -	1		\$800.00 ✓		\$0.00
P 779601 -	1		\$800.00 ✓		\$0.00
P 779602 -	1		\$800.00 ✓		\$0.00
P 779603 -	1		\$400.00 ✓		\$0.00
P 779604 -	1		\$400.00 ✓		\$0.00
P 779605 -	1	\$25,141.00	\$400.00	\$12,000.00 ✓	\$13,141.00
P 779606 -	1	\$18,089.00	\$400.00	\$7,600.00 7250	\$10,489.00
P 779608 -	1		\$800.00 ✓		\$0.00
P 779695 -	1		\$800.00 ✓		\$0.00
P 779696 -	1		\$800.00 ✓		\$0.00
P 779939 -	1		\$800.00 ✓		\$0.00
P 779940 -	1		\$800.00 ✓		\$0.00
P 779941 -	1		\$400.00 ✓		\$0.00
P 779942 -	1		\$400.00 ✓		\$0.00
P 779943 -	1		\$400.00 ✓		\$0.00
P 779944 -	1		\$800.00 ✓		\$0.00
P 779945 -	1		\$800.00 ✓		\$0.00
P 779946 -	1		\$800.00 ✓		\$0.00
P 780001 -	1		\$400.00 ✓		\$0.00
P 780002 -	1		\$800.00 ✓		\$0.00
P 780003 -	1		\$800.00 ✓		\$0.00
P 780004 -	1		\$400.00 ✓		\$0.00
P 780005 -	1		\$800.00 ✓		\$0.00
P 780006 -	1		\$800.00 ✓		\$0.00
P 1218851	1		\$400.00		\$0.00
TOTALS	31	\$43,230.00	\$19,600.00	\$19,600.00	\$23,630.00

10489
400
10889 JM

JM
Reports attached fax.

2 · 17680

RECEIVED
SEP 11 1997
10:11 AM
GEOSCIENCE ASSESSMENT
OFFICE

RECEIVED
SEP 10 1997 C
M 10:10 AM
PORCUPINE MINING DIVISION

Personal information collected on this form is obtained under the authority of subsection 6(1) of the Assessment Work Regulation 6/96. Under section 8 of the Mining Act, the information is a public record. This information will be used to review the assessment work and correspond with the mining land holder. Questions about this collection should be directed to the Chief Mining Recorder, Ministry of Northern Development and Mines, 6th Floor, 933 Ramsey Lake Road, Sudbury, Ontario, P3E 6B5.

Work Type	Units of Work <small>Depending on the type of work, list the number of hours/days worked, metres of drilling, kilometres of grid line, number of samples, etc.</small>	Cost Per Unit of work	Total Cost
DIAMOND DRILLING	768 METERS	52.68	40,458.00
LOGGING CORE	4 1/2 DAYS	350.00	1,575.00
LABOUR	2 DAYS	150.00	300.00
"	4 DAYS	100.00	400.00
Associated Costs (e.g. supplies, mobilization and demobilization).			
ASSAYS		16.53	496.00
Transportation Costs			
			2.17680
Food and Lodging Costs			
Total Value of Assessment Work			43,229.00

Calculations of Filing Discounts:

1. Work filed within two years of performance is claimed at 100% of the above Total Value of Assessment Work.
2. If work is filed after two years and up to five years after performance, it can only be claimed at 50% of the Total Value of Assessment Work. If this situation applies to your claims, use the calculation below:

TOTAL VALUE OF ASSESSMENT WORK × 0.50 = Total \$ value of worked claimed.

Note:

- Work older than 5 years is not eligible for credit.
- A recorded holder may be required to verify expenditures claimed in this statement of costs within 45 days of a request for verification and/or correction/clarification. If verification and/or correction/clarification is not made, the Minister may reject all or part of the assessment work submitted.

Certification verifying costs:

I, PETER G. McHEATON, do hereby certify, that the amounts shown are as accurate as may reasonably be determined and the costs were incurred while conducting assessment work on the lands indicated on the accompanying Declaration of Work form as AGENT. I am authorized to make this certification.

(please print full name)
(recorded holder, agent, or state company position with signing authority)

RECEIVED
SEP 10 1997
P.N.M.
PORCUPINE MINING DIVISION

RECEIVED
10:00 AM
SEP 11 1997
GEOSCIENCE ASSESSMENT OFFICE

Signature: [Signature] Date: Aug 29/97

November 12, 1997

DAVID MEUNIER
P.O. BOX 1624
403 DOME STREET
SOUTH PORCUPINE, Ontario
P0N-1H0

Geoscience Assessment Office
933 Ramsey Lake Road
6th Floor
Sudbury, Ontario
P3E 6B5

Telephone: (888) 415-9846
Fax: (705) 670-5863

Dear Sir or Madam:

Submission Number: 2.17680

Status

Subject: Transaction Number(s): W9760.00325 Deemed Approval

We have reviewed your Assessment Work submission with the above noted Transaction Number(s). The attached summary page(s) indicate the results of the review. **WE RECOMMEND YOU READ THIS SUMMARY FOR THE DETAILS PERTAINING TO YOUR ASSESSMENT WORK.**

If the status for a transaction is a 45 Day Notice, the summary will outline the reasons for the notice, and any steps you can take to remedy deficiencies. The 90-day deemed approval provision, subsection 6(7) of the Assessment Work Regulation, will no longer be in effect for assessment work which has received a 45 Day Notice.

Please note any revisions must be submitted in **DUPLICATE** to the Geoscience Assessment Office, by the response date on the summary.

If you have any questions regarding this correspondence, please contact Steve Beneteau by e-mail at beneteau_s@torv05.ndm.gov.on.ca or by telephone at (705) 670-5855.

Yours sincerely,



ORIGINAL SIGNED BY
Blair Kite
Supervisor, Geoscience Assessment Office
Mining Lands Section

Work Report Assessment Results

Submission Number: 2.17680

Date Correspondence Sent: November 12, 1997

Assessor: Steve Beneteau

Transaction Number	First Claim Number	Township(s) / Area(s)	Status	Approval Date
W9760.00325	779605	LANGMUIR	Deemed Approval	November 12, 1997

Section:
16 Drilling PDRILL

Correspondence to:
Resident Geologist
South Porcupine, ON

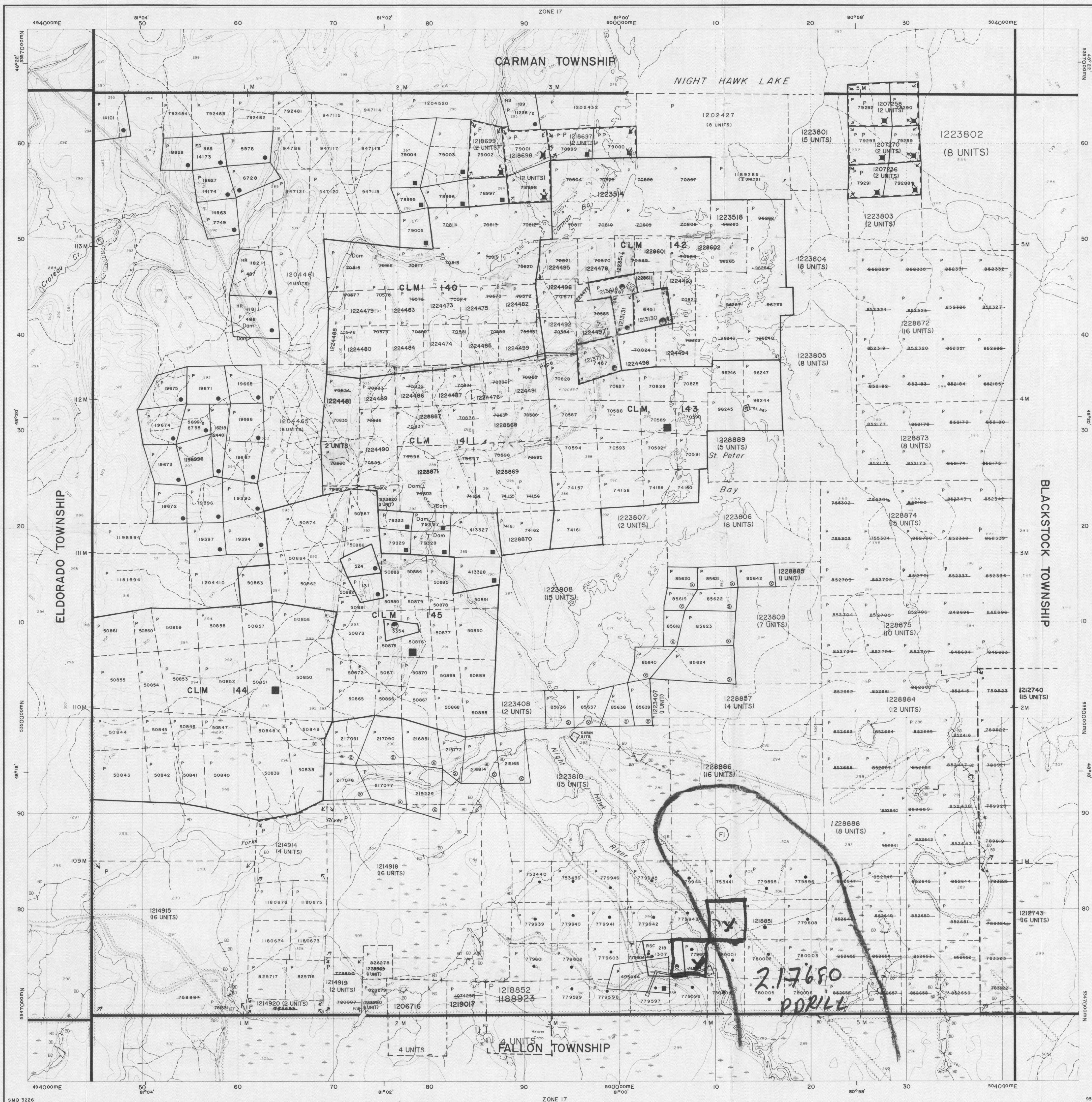
Recorded Holder(s) and/or Agent(s):
DAVID MEUNIER
SOUTH PORCUPINE, Ontario

Assessment Files Library
Sudbury, ON



Ministry of Natural Resources

Ministry of Northern Development and Mines

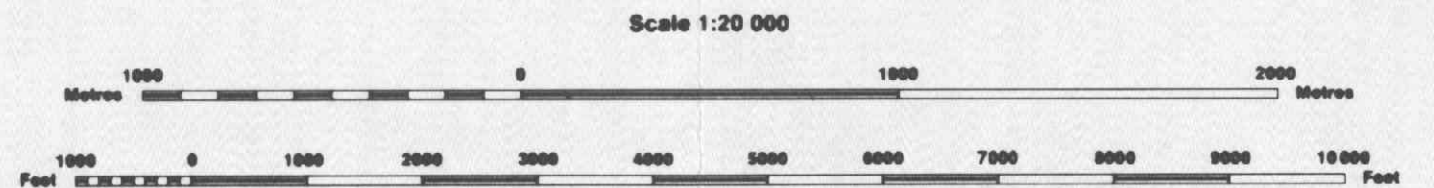


INDEX TO LAND DISPOSITION

PLAN G-3226 TOWNSHIP

LANGMUIR

M.N.R. ADMINISTRATIVE DISTRICT TIMMINS MINING DIVISION PORCUPINE LAND TITLES/REGISTRY DIVISION COCHRANE



AREAS WITHDRAWN FROM DISPOSITION

MRO - Mining Rights Only SRO - Surface Rights Only M+S - Mining and Surface Rights

Table with columns: Description, Order No., Date, Disposition, File

(FI) THIS TWP IS SUBJECT TO FOREST ACTIVITY IN 1995-96. FURTHER INFORMATION AVAILABLE ON FILE.

SYMBOLS

Table of symbols for Boundary, Township, Meridian, Baseline, Road allowance, etc.

DATE OF ISSUE

SEP 10 1997

PROVINCIAL RECORDING OFFICE - SUDBURY

NOTES

THIS TOWNSHIP LIES WITHIN THE MUNICIPALITY OF THE CITY OF TIMMINS

FLOODING RIGHTS ON NIGHT HAWK LAKE TO THE CONTOUR ELEVATION 903.5' RESERVED TO ONT. HYDRO.

DISPOSITION OF CROWN LANDS

Table of symbols for Patent, Lease, Licence of Occupation, etc.

ACTIVATED JULY 16, 1995 BY:

Map base and land disposition drafting by Surveys and Mapping Branch, Ministry of Natural Resources.

The disposition of land, location of lot fabric and parcel boundaries on this index was compiled for administrative purposes only.

THE INFORMATION THAT APPEARS ON THIS MAP HAS BEEN COMPILED FROM VARIOUS SOURCES, AND ACCURACY IS NOT GUARANTEED. THOSE WISHING TO STAKE MINING CLAIMS SHOULD CONSULT WITH THE MINING RECORDER, MINISTRY OF NORTHERN DEVELOPMENT AND MINES, FOR ADDITIONAL INFORMATION ON THE STATUS OF THE LANDS SHOWN HEREON.

5547800N

5547800N

5547800N

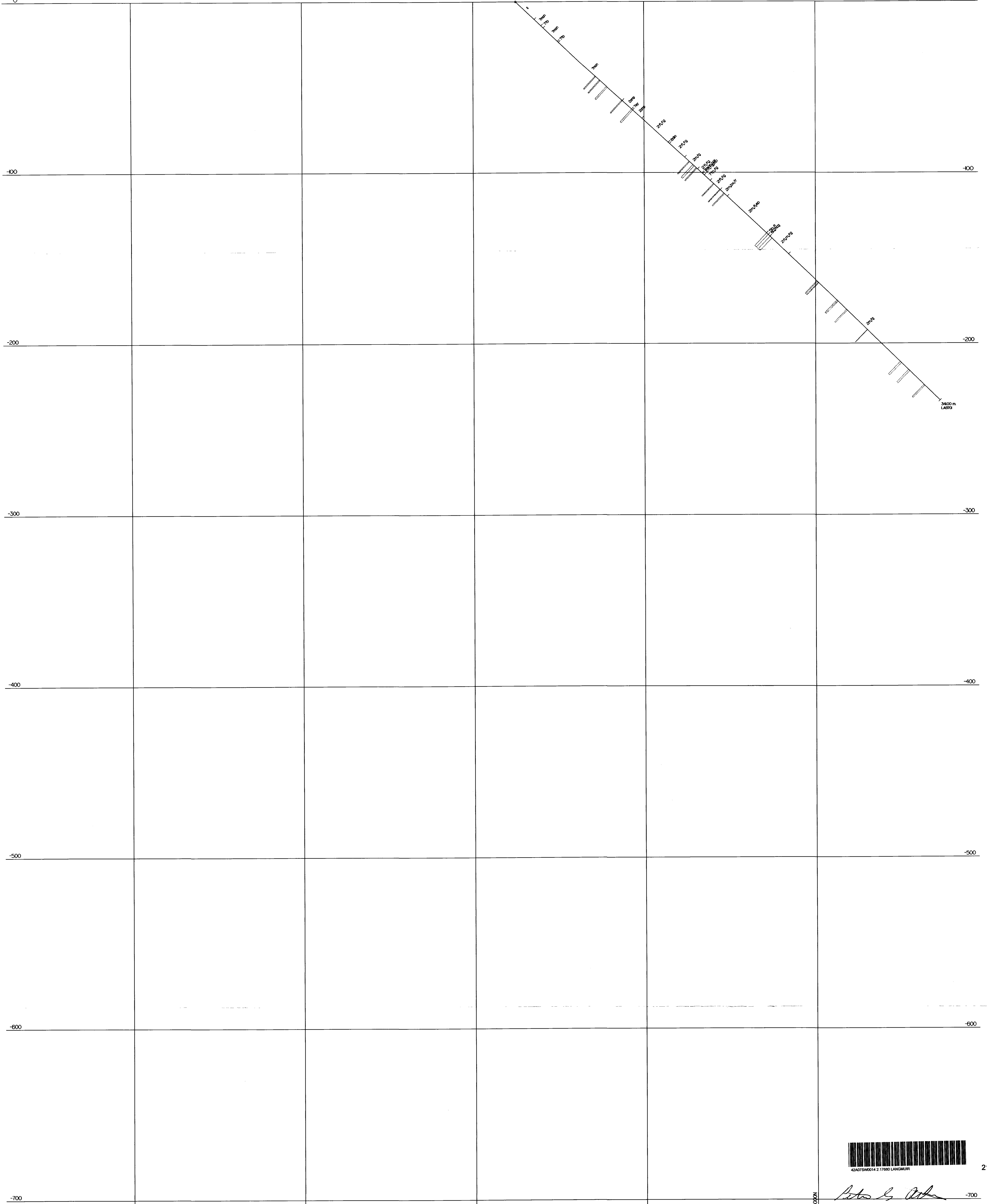
5547800N

5547800N

50200E

LA9701

50200E



210

John L. Polk

-700

BLACK PEARL MINERALS INC.
 SECTION 50200E
 Langmuir
 SCALE: 1/1000

10.00A DA.

DRAWN BY POLK GEOLOGICAL SERVICES

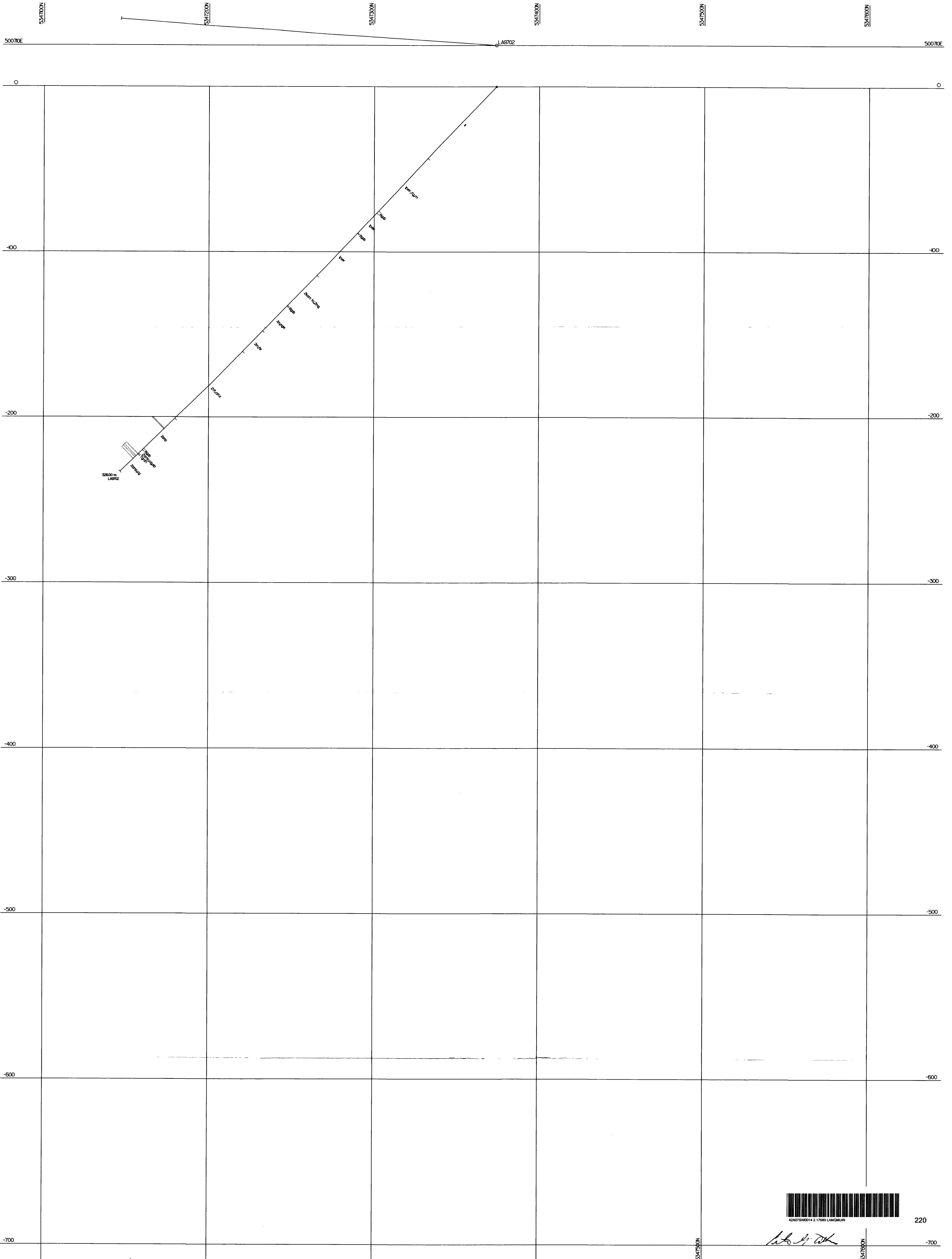
2-17000

5547800N

5547800N

5547800N

5547800N



220

Handwritten signature

BLACK PEARL MINERALS INC.
 SECTION 501200E
 Langmuir
 SCALE: 1/1000

10:00 AM '97

DRAWN BY POLK GEOLOGICAL SERVICES

2-17380

5547200N

5547200N

5547200N

5547200N

5547200N

0E

0E

0

0

-100

-100

-200

-200

-300

-300

-400

-400

-500

-500

-600

-600

-700

-700

5547200N

5547200N

5547200N

5547200N

1.7m
1.5m
2m
0.600m
1.800



424720014 2.1700 LANGMUIR

230

2.17080

John M. Polk

BLACK PEARL MINERALS INC.
SECTION 50200E
Langmuir
SCALE: 1/1000

JOHN DA

DRAWN BY POLK GEOLOGICAL SERVICES

2.17080