



42A075W0040 35 LANGMUIR

010

Diamond Drilling

Township OF LANGMUIR

Report N^o: 35

Work performed by: Maybrun Mines

Claim N ^o	Hole N ^o	Footage	Date	Note
P 78912	1	500'	Apr/65	
P 78906	2	501'	Apr/65	
P 65298	3	497'	Apr-May/65	
		<u>1498'</u>		

Notes:

MAYBRUN MINES LIMITED
LANGMUIR TOWNSHIP
ONTARIO

LOCATION

HOLE # 1

Line 18 E & 19 & 00 N
or
190' S and 670' W
Post # 1, P. 78912
(Scaled from Cana Map Sheet)

Started April 7 1965
Completed April 12 1965
Depth 500.0'

Bearing North

Collar @ 45°
500' @ 42°

Drilled by Bradley Bros. Drilling Limited,
Noranda, P.Q.

Logged by R. Massey Williams

L O G

0.0	to	15.0	Casing (Overburden)
15.0		20.0	Fresh, andesitic lava
20.0		25.0	Graphitic phase, regional alteration only
25.0		50.0	Dark basaltic lavas, regional alteration only
50.0		75.0	Dark basaltic lavas, evidence of flow structure
75.0		100.0	Dark basaltic lavas, some evidence of flow structures, regional alteration only
100.0		125.0	As above, some scattered regional quartz
125.0		150.0	Basaltic lavas, some quartz, regional alteration only
150.0		175.0	Basalt, regional alteration only
175.0		200.0	Basic lavas, massive, regional alteration only, rather blocky 175 ft. to 180 ft.
200.0		225.0	As above
225.0		250.0	As above

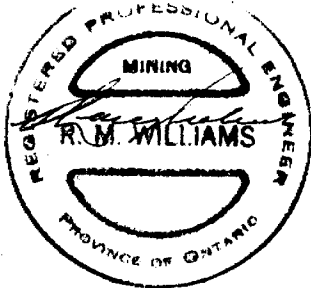
Maybrun Mines Limited

Hole No. 1
Langmuir Twp.

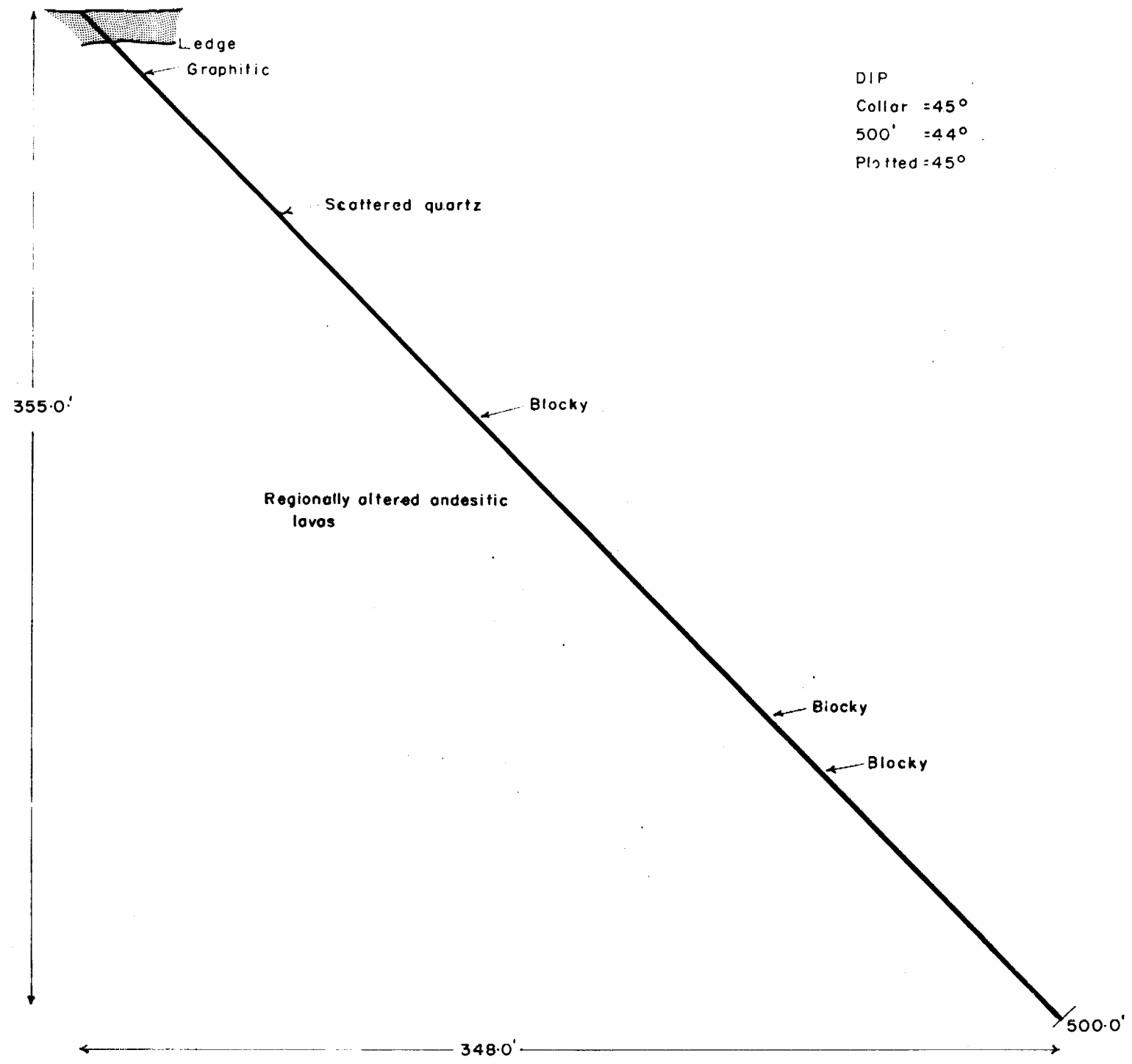
250.0	to	275.0	Grading into andesitic lavas
275.0		300.0	Andesitic lavas, regional alteration only
300.0		325.0	Andesitic lavas, some scattered quartz, regional alteration only
325.0		350.0	As above
350.0		375.0	As above, blocky throughout
375.0		400.0	Andesitic lavas, regional alteration only
400.0		425.0	Andesitic lavas, scattered quartz
425.0		450.0	As above
450.0		475.0	Andesitic lavas, regional alteration only
475.0		500.0	Andesitic lavas, regional alteration only, fresh looking throughout.

BOTTOMED @ 500.0'

**Core stored at Bradley Bros. Limited,
Timmias, Ontario**



NORTH



DIP
 Collar = 45°
 500' = 44°
 Plotted = 45°



Location of hole
 Line 18E- 19+00 N
 or
 190'S - 670'W
 Post no. 1 P78912
 Scaled from 200 scale geophysical plan by
 Cana Exploration Consultants Limited

MAYBRUN MINES LIMITED
Langmuir Township
Ontario

SECTION THROUGH DIAMOND DRILL HOLE No. 1

SCALE 1 inch to 50 feet

R. Massey Williams
 Professional Engineer

May 1965

**MAYBRUN MINES LIMITED
 LANGMUIR TOWNSHIP
 ONTARIO**

LOCATION

HOLE NO. 2

Line 12 W & 6 + 00 N
 or
 600' N and 1200' W
 Post # 2, 78906
 (Scaled from Cass Map Sheet)

Started April 15 1965
 Completed April 26 1965
 Depth 501.0'

Bearing North
 Collar @ 45°
 500' @ 42°

Drilled by Bradley Bros. Drilling Limited,
 Noranda, P.Q.

Logged by R. Massey Williams

0.0 to 66.0

L O G
 Overburden

Sludges in ten foot sections taken from 60' to 110'
 to cover 50' in fault zone, due to poor core
 recovery. No water in fault zone.

66.0	to	75.0	Blocky, broken up andesitic lavas, mostly lost core
75.0		100.0	Lost core 10', very blocky, broken up andesitic lavas in fault zone.
100.0		125.0	Lost core 100' to 103' 104' to 108'
			Blocky, fresh regionally altered andesitic lavas
125.0		150.0	Blocky, andesitic lavas
150.0		175.0	As above
175.0		200.0	As above
200.0		225.0	Blocky, andesitic lavas, regional alteration only

MAYBRUN MINES LIMITED

HOLE NO. 2

225.0	250.0	Blocky andesitic lavas		
250.0	275.0	Blocky Andesitic iron - iron formation 260-265		
275.0	300.0	Andesitic lavas, semi-sheared, 280 to 300.0		
300.0	325.0	Massive fresh, andesitic lavas		
325.0	350.0	As above, regional alteration only		
350.0	375.0	Blocky, andesitic lavas, regional alteration only		
375.0	400.0	As above,	Lost core 6" @ 384	
			12" @ 398	
400.0	425.0	Blocky andesitic lavas, fracturing parallel to the hole, some evidence of alteration		
425.0	450.0	Andesitic lavas, regional alteration only		
450.0	475.0	As above, slip plane - 460'	Lost core 460 - 463	
475.0	501.0	Andesitic lavas, regionally altered only,	Lost core 497 - 500	

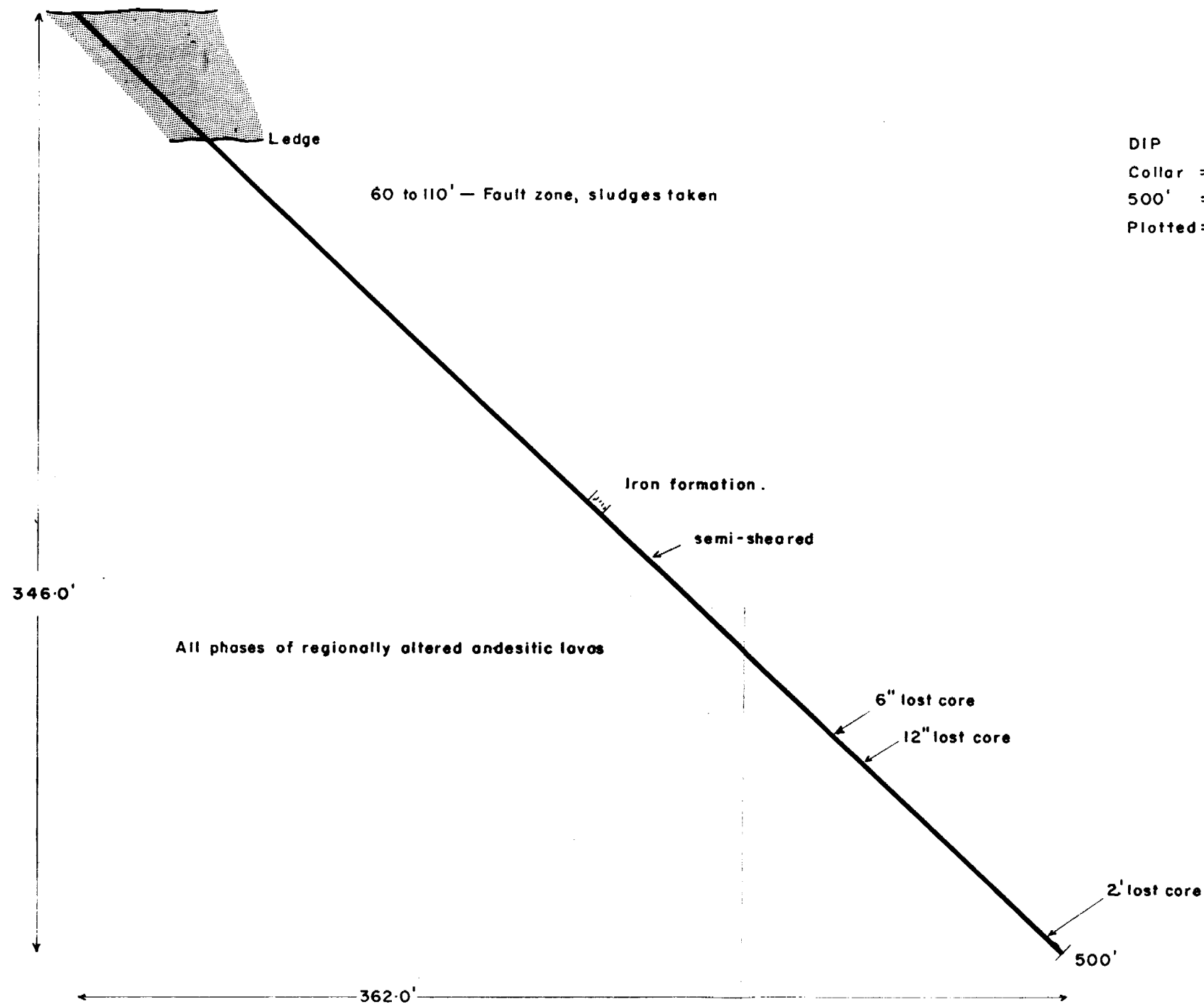
BOTTOMED @ 501.0'

Core stored at Bradley Bros. Ltd.,
 Timmins, Ontario.

Sludges from 60.0 to 110.0' Assayed Nil for Gold.



NORTH



Location of hole

Line 12W - 6+00N

or

600'N - 1200'W

Post no. 2 P78906

Scaled from 200 scale geophysical plan by

Cana Exploration Consultants Limited

MAYBRUN MINES LIMITED

Langmuir Township

Ontario

SECTION THROUGH DIAMOND DRILL HOLE No.2

SCALE 1 inch to 50 feet

R. Massey Williams
Professional Engineer

May 1965

**MAYBRUN MINES LIMITED
LANGMUIR TOWNSHIP
ONTARIO**

LOCATION

HOLE NO. 3

Line 25 W & 16 + 00 N
or
260' N & 100' E
Post # 3, P. 65298
(Scaled from Cana Map Sheet)

Started April 27, 1965
Completed May 1, 1965
Depth 497.0'

Bearing North
Collar @ 45°
490' @ 42°

Drilled by Bradley Bros Drilling Limited,
Noranda, P.Q.

Logged by R. Massey Williams

L O G

0.0 to	29.0	Overburden, Casing
29.0	50.0	Blocky and broken up, basic andesites, fresh and unaltered
50.0	75.0	As above
75.0	100.0	Blocky slips @ 30° to the core massive basic andesites
100.0	125.0	As above, blocky throughout
125.0	150.0	Basic andesitic lavas, tendency to be blocky
150.0	175.0	Basic lavas, fresh and unaltered
175.0	200.0	As above
200.0	225.0	As above - blocky throughout
225.0	250.0	Basic andesites, blocky

MAYBRUN MINES LIMITED

HOLE NO. 3

250.0	to	275.0	Basic andesites, blocky, some hair stringers quartz, slightly serpentinized @ 273 - 275
275.0		300.0	As above, some scattered quartz, alteration and serpentinization
300.0		325.0	As above, very scapy, 315-325
325.0		350.0	As above, scattered scapy sections
350.0		375.0	Massive, fresh basic andesites
375.0		400.0	As above, with some hair quartz stringers
400.0		425.0	30% lost core, fault zone in the basic lavas
425.0		450.0	60% lost core, fault zone in the basic lavas
450.0		475.0	60% lost core, fault zone in the basic lavas
475.0		497.0	50% lost core, fault zone in the basic lavas, sludges taken in 10 foot sections from 430.0 to 497.0'

No water in this fault zone
No visual mineral in the core.

BOTTOMED @ 497.0'

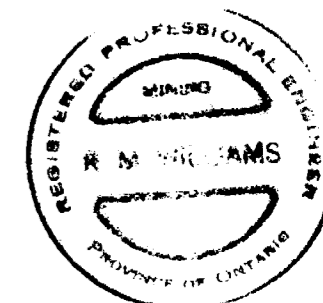
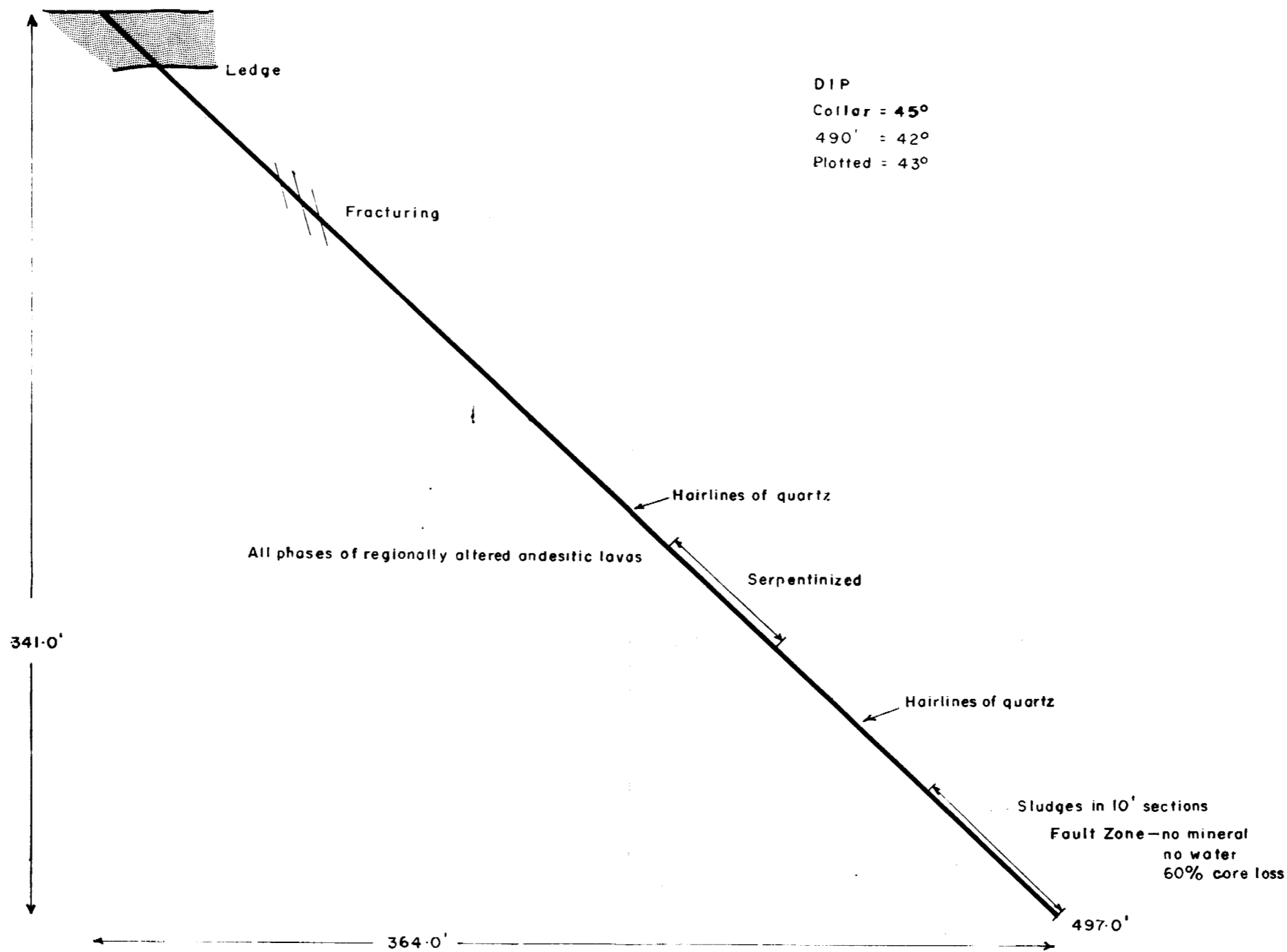
Core stored with Bradley Bros. Ltd.,
at Timmins, Ontario.

Note:

Sludges 430 - 497 **Assayed for Gold - All all.**



NORTH



Location of hole

Line 25W - 16+00N

or

260'N - 100'E

Post no. 3 P65298

Scaled from 200 scale geophysical plan by

Cana Exploration Consultants Limited

MAYBRUN MINES LIMITED

Langmuir Township

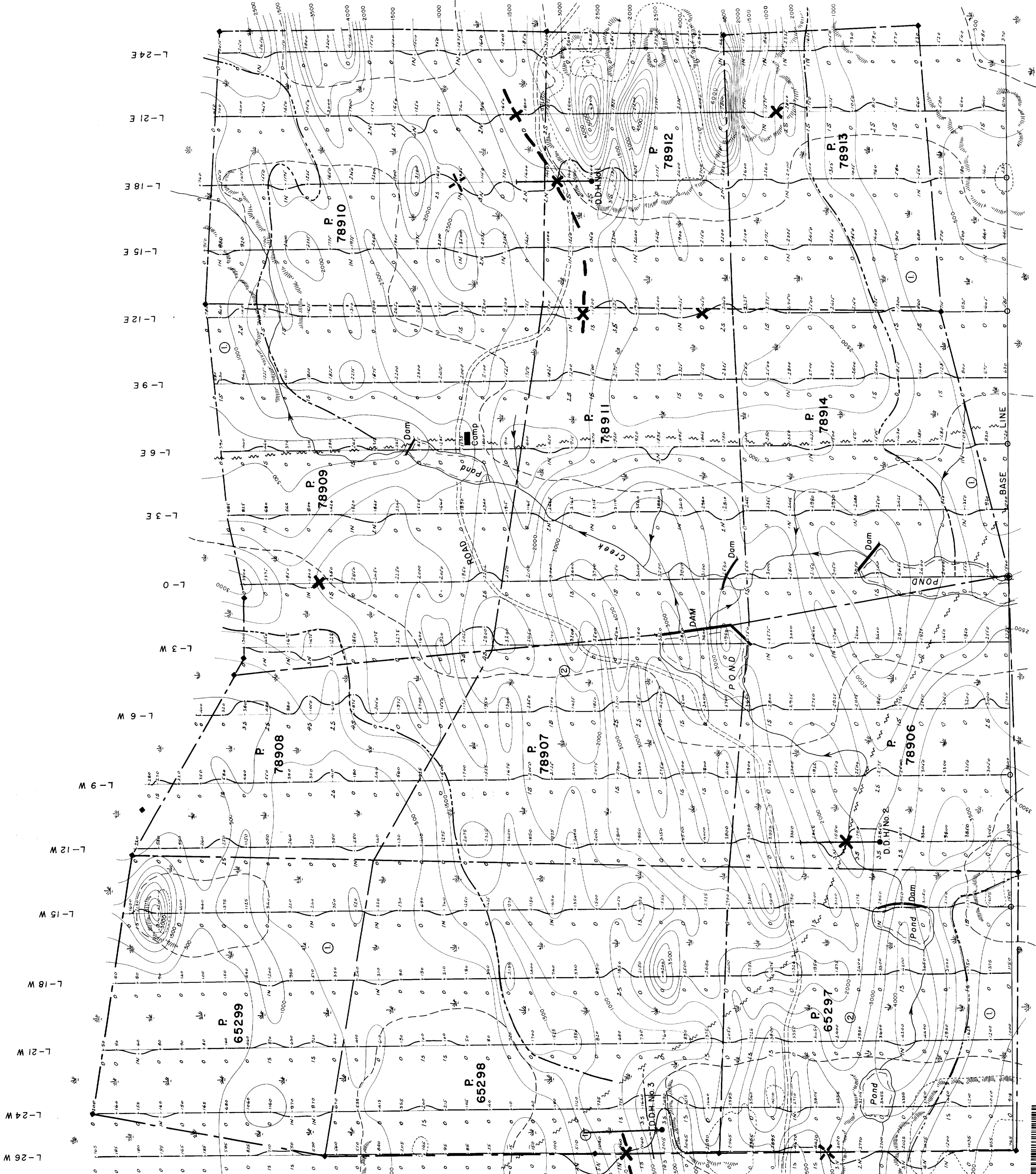
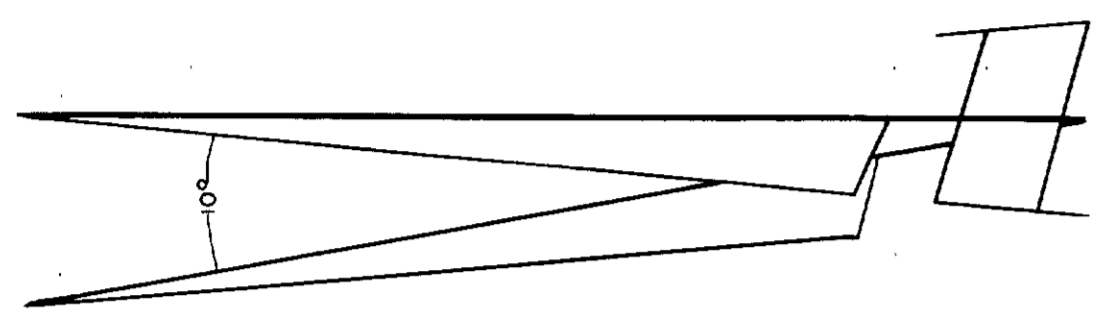
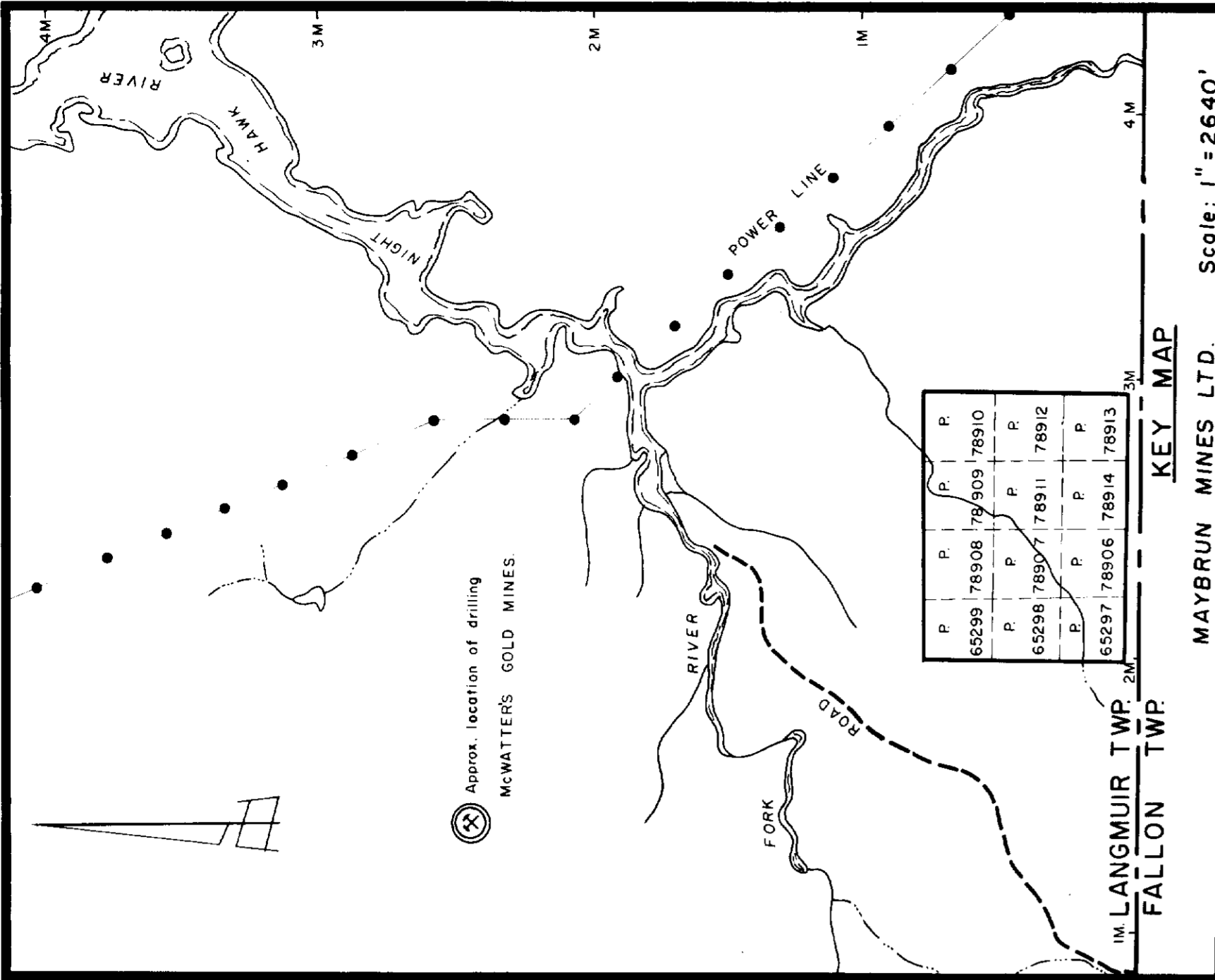
Ontario

SECTION THROUGH DIAMOND DRILL HOLE No. 3

SCALE 1 inch to 50 feet

R. Massey Williams
Professional Engineer

May 1965



LEGEND

Claim, post and claim boundary.

Swamp.

Higher ground.

Outcrop.

Magnetic control station.

Picket line cut and chained.

Magnetic readings obtained and plotted to the East of picket line.

Magnetic contours with 500 gammas interval.

0 gamma and under.

0 - 500 gammas

500 - 1000 "

1000 - 1500 "

1500 - 2000 "

2000 - 3000 "

3000 - 4000 "

4000 gammas and over.

Electromagnetic dip angles observed by using a Sharpe SE-200 unit and plotted to the West of picket line. (parallel line method).

Scale of profile: 1/10" = 1° of dip angle.

Electromagnetic "CROSS-OVER".

Electromagnetic conducting axis.

Electromagnetic "Reversed Cross-Over" diamond drill hole.

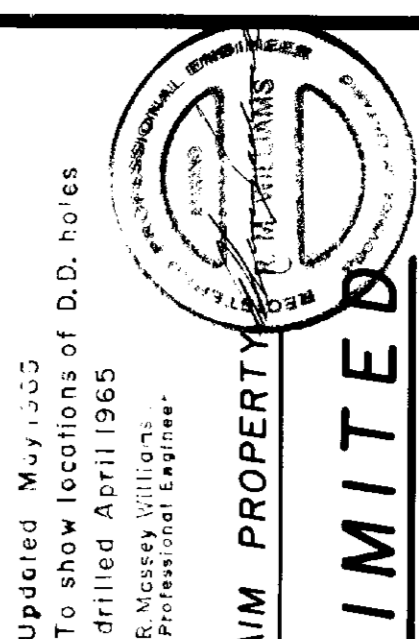
Inferred fault.

Inferred geological boundary.

Mostly volcanics

Mostly Basic to ultra-basic intrusives.

Minor volcanics.



Updated May 1965
To show locations of D.D. holes drilled April 1965
R. Mackay, William, Professional Engineer.

GEOPHYSICAL SURVEY DATA ON 12 CLAIM PROPERTY
MAYBRUN MINES LIMITED
LANGMUIR TOWNSHIP
PORCUPINE MINING DIVISION
ONTARIO
JANUARY, 1965.
SCALE: 1" = 200'



200

COPYRIGHT © 1965

LANGMUIR Twp DD #35

CANA EXPLORATION CONSULTANTS LIMITED.