



42A0BNW0001 2.14435 GUIBORD

010



RSGM R. Somerville Geological & Mining Engineering Ltd.

Ste. 103 - 255 West 1st Street • North Vancouver, B.C., Canada V7M 3G8 • (604) 986-5766 Fax (604) 986-8701

A GEOLOGICAL REPORT

ON

CLAIM # L1088230

LOCATED IN

the SW 1/4 of the N 1/2 Lot 11 Con. 3

in

GUIBORD TOWNSHIP, ONTARIO

LARDER LAKE MINING DIVISION

FOR BROTHERS GOLD CORP.

by R. Somerville, P. Eng. *Qual - 2.11829*

dated NOVEMBER 1, 1991

NTS 42 A-8
Lat: 48 29.5'
Long: 80 15.5'

2014400

RSGM R. Somerville Geological & Mining Engineering Ltd.

Ste. 103 - 255 West 1st Street • North Vancouver, B.C., Canada V7M 3G8 • (604) 986-5766 Fax (604) 986-8701

A GEOLOGICAL REPORT

ON

CLAIM # L1088230

LOCATED IN

the SW 1/4 of the N 1/2 Lot 11 Con. 3

in

GUIBORD TOWNSHIP, ONTARIO

LARDER LAKE MINING DIVISION

FOR BROTHERS GOLD CORP.

by R. Somerville, P. Eng.

dated NOVEMBER 1, 1991

NTS 42 A-8
Lat: 48 29.5'
Long: 80 15.5'

TABLE OF CONTENTS

	Page
INTRODUCTION	
Location and Access	1
Property Location - Regional	2
Claims Location Map	3
Topography	4
The Property	4
Property Holder and Operator	4
Summary of Previous Work	5
GEOLOGICAL SURVEY	
General Geology	9
Geology of the Property	11
Table 1	
Table of Lithologic Units	11
Rock Descriptions	12
Recommendations	14
CERTIFICATE	15
APPENDIX	16
SELECTED REFERENCES	
POCKET	
Map. 3 - Geology - Claim # L1088230	1:500

RSGM R. Somerville Geological & Mining Engineering Ltd.

Ste. 103 - 255 West 1st Street • North Vancouver, B.C., Canada V7M 3G8 • (604) 986-5766 Fax (604) 986-8701

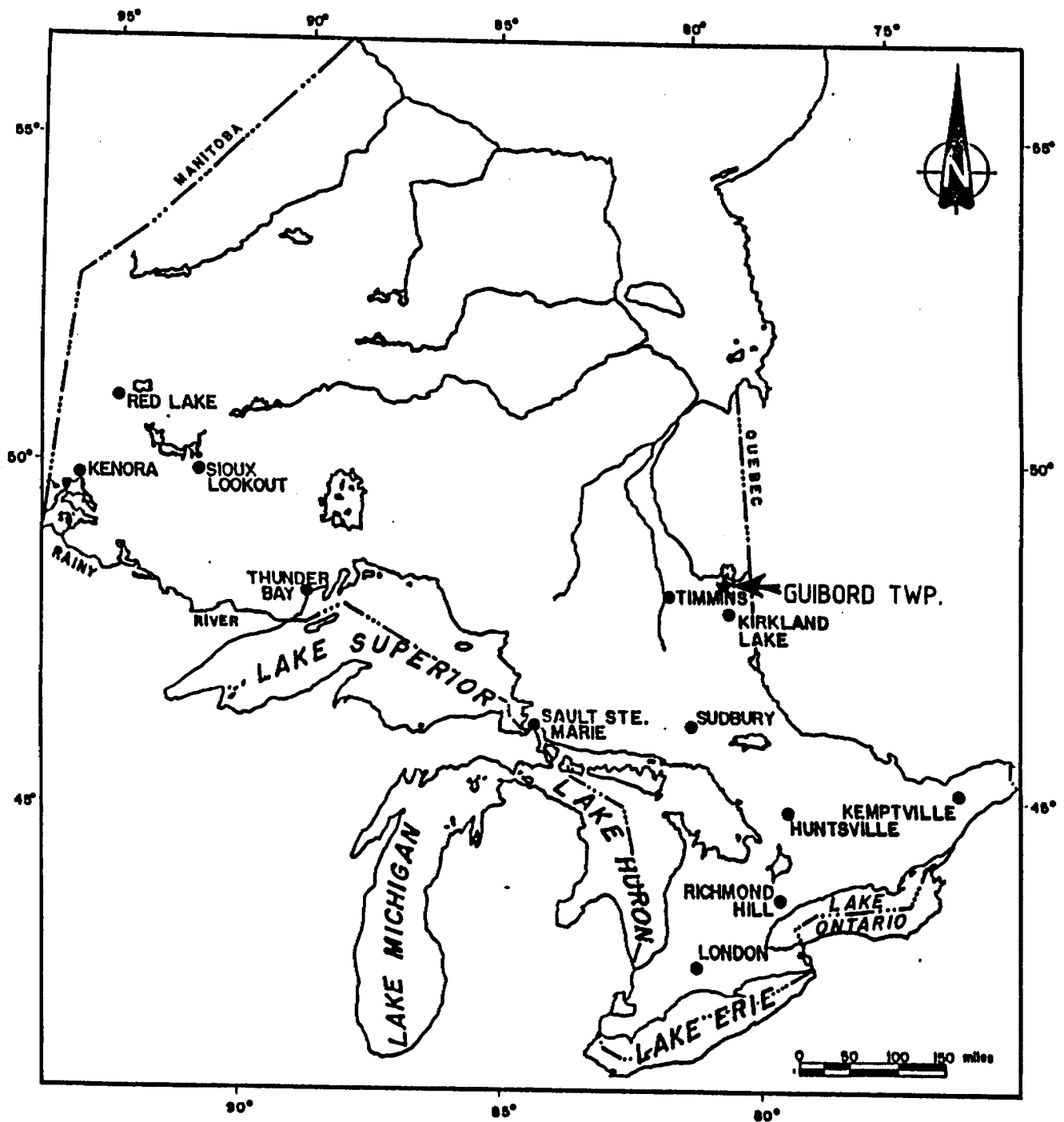
INTRODUCTION

Location and Access

The property is located in the southwest quarter of Lot 11 in the north half of Concession 3 of the Township of Guibord, in the District of Cochrane, in the Province of Ontario. It consists of one claim (see Location Map Figure 1 & Figure 2).

Access to the property may be obtained by a winter road or trail leading from Ontario Highway #572, which runs along the western boundary of Guibord Township. About three miles north of the junction of the trail and Highway #572, the highway terminates at Highway #101, a main east-west transportation route across Northern Ontario and into Quebec.

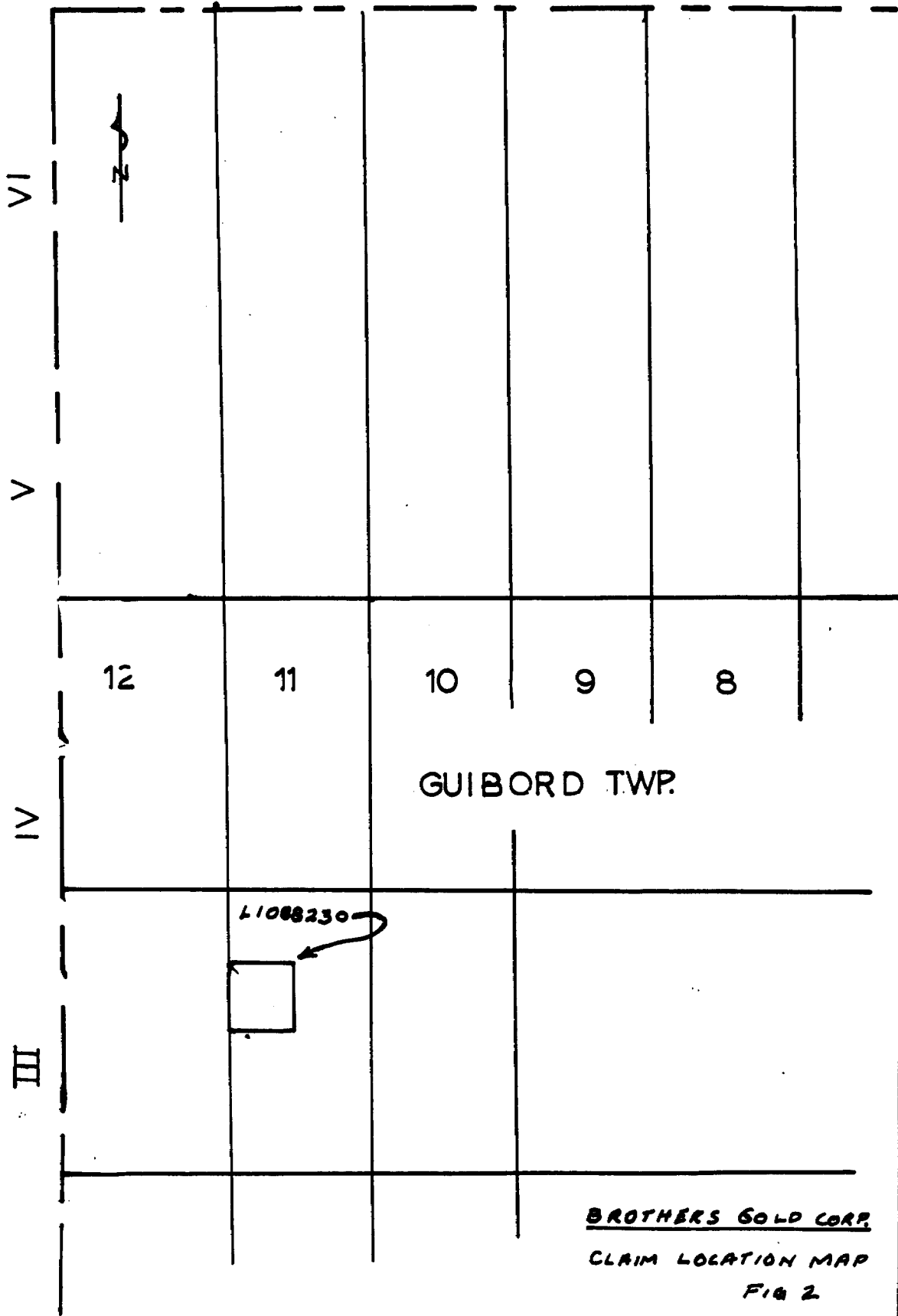
The nearest town is Holtyre, a small mining community serving the Ross mine, which lies about 1.5 miles south and 0.5 miles west of the property. Matheson, a town of about 4,000, is located on the northern Trans-Canada Highway (Highway #11) and a major railway. This town is the regional centre for the area and lies at the intersection of Highway #101 about 7.5 miles to the west of the intersection of Highways #101 and 572. Moreover, the town of Timmins, located approximately 50 miles west of the property, is a major centre for supplies and personnel. Scheduled air, bus and rail transportation is available from this centre.



PROVINCE OF ONTARIO

REVISIONS	RSGM ENG. LTD.		
	for BROTHERS GOLD CORP.		
	Title		
	Property Location-Regional		
	Fig. 1		
	Date: 15/3/90	Scale: 1"=160mi.	N.T.S.: 42A
	Drawn:	Approved:	File:

MUNRO TWP.



Topography

The property has very little relief except in a few areas in the northern half of the claim where it is sharply incised by narrow north-flowing creekbeds, and on the east side of the claim where the Pike River forms a valley about 200 m across and about 10 m deep. At this point the River has eroded to bedrock in places.

The forest cover is open and semi-open spruce and jack pine muskeg on the west side of the claim, but the remaining 80% of the property is mainly covered by a regular distribution of poplar. The Pike River valley is largely covered in a thick growth of alders.

All the waters in this area find their way into James Bay via the Pike River, then the Black River, and, finally, the Abitibi River which flows north to James Bay.

The Property

The property consists of one unpatented mining claim in Guibord Township whose claim record number is L1088230.

The claim is recorded in the Larder Lake Mining Division.

The claim was covered by the survey, which was completed on August 15 and 16, 1991 on grid lines previously cut and flagged.

Property Holder and Operator

The claim is recorded in the name of Brothers Gold Corp., who is paying for the work on the property, and whose Prospector's License number is T-5161. The offices of Brothers Gold Corp. are located at 103 - 255 West 1st Street, North Vancouver, British Columbia, V7M 3G8. The company is registered extra-provincially

in Ontario. The operator of the work program is R. Somerville Geological and Mining Engineering Ltd., Ste. 103, 255 West 1st St. North Vancouver B.C. V7M 3G8.

Summary of Previous Work

The history of mineral, and specifically gold, exploration in the district dates back to the period of settlement there after the turn of the century.

The earliest mining in the area took place at the Croesus mine between 1915 and 1918, and intermittently until 1936. The Croesus Mine is located only 5.5 mi. north of the property, and the spectacular results on this property sparked a wave of prospecting that led to a close examination of the outcrop areas.

In 1936 the Ross mine, located 3/4 mi. west of the property, was brought into production, and has operated continuously ever since to produce over 1 million ounces of gold to date. Between 1980 and 1983, the old Canadian Arrow mine, located in the southwest corner of Hislop Township, was reopened, and over 17,000 ounces of gold were recovered. During exploration for gold, numerous small pits and shafts have been opened in Hislop and Guibord Township, including a 475 foot deep shaft on the New Kelore property in the 1940's, and recently, an 1130 foot decline on the Goldpost property. Production from this decline is approximately 20,000 tons at 0.50 oz. Au/ton to date.

W.K. Prest (1953), who mapped a few outcrops in eastern Hislop in conjunction with his mapping of adjacent Guibord township, and who published a map and report on Guibord township, describes the

early work in the area as follows:

The early work in the area in and around Hislop township carried out by the Ontario Department of Mines and by commercial interests has been described by Moore. His report deals with the geology of Hislop township and four adjoining townships mapped during the summer of 1936, the map accompanying the report is on a scale of 1 inch to a 3/4 mile. In 1944, J. Satterly started a program of mapping on a scale of 1 inch to 1,000 feet immediately north and northeast of Hislop township. In 1945, H. S. Armstrong completed the mapping of Beatty township immediately north of Hislop. In 1946 the author mapped Guibord township immediately east of Hislop and examined a few outcrops in Hislop near the township line where rather unexpected evidence of tight folding was first noticed in this eastern extension of the Porcupine gold belt.

O.L. Hughes (1959) and U.J. Vagners (1984) have reported on the Quaternary geology of the area, and a number of compilations have been made encompassing Guibord Twp. However, nothing very significant has been added to the local geology since Prest. A fairly complete list of selected references has been compiled by the Ontario Geological Survey and has been included in the Appendix.

In the 1940's the area was covered by the Ontario Department of Mines/Geological Survey of Canada 1 inch to 1 mile aeromagnetic survey, ODM/GSC (1970). This was followed by a more detailed survey by the Ontario Department of Mines and Northern Affairs when they contracted with Barringer Research to fly a 6 township area including Guibord Township with a system comprised of total intensity magnetic, E-Phase apparent resistivity, Radiophase electromagnetic and total count gamma ray, ODMNA (1971). The latest geophysical work performed by the government was the aeromagnetic-INPUT survey flown as part of the BRIM project, OGS

(1984).

Assessment work data compilations from the Resident Geologist's office in Kirkland Lake began with a data series map P. 872, Ploeger and Grabowski (1980) and most recently with a GDIF folio 399, OGS (1987).

Previous work in the form of assessment work has not been extensive, and has largely been part of other programs that have concentrated on claims around the subject claim.

Gui-Por GML

In 1947 two diamond drill holes were drilled on the property. These appear to be incorrectly plotted on the compilation. One of the drill holes was physically located on the 1990 grid at about 80N on Line 14W. This "old hole" (see Map #3) probably corresponds with hole # 1947 -4, which apparently was drilled for 1004 ft. (including 80 ft of overburden) and reported pyrite and chalcopyrite mineralization, quartz, quartz carbonate veins and hematite alteration. The hole appears to have encountered largely granodiorite. A second hole, 1947-5, was drilled for 1007 ft (including 73 ft. of overburden). This hole encountered pyrite and quartz carbonate veins largely in granodiorite also. The collar location of this hole has not yet been determined.

Hollinger M.L.

In 1975 and 1976 Hollinger worked on a "Group 4" which included the subject claim. Ground magnetic, VLF-EM and

Horizontal Loop surveys were completed on the claim. The magnetic work was indeterminate, but several northeast trending VLF anomalies were determined. No further work was done.

ARMCO Mineral Ex LTD

In 1980 - 81 ARMCO held the subject claim as part of the "Parson" property. No significant work seems to have been completed on the property during their tenure.

BROTHERS GOLD CORP.

In June 1990, Brothers Gold completed a magnetometer survey on the claim. A report dated July 15, 1990 by R. Somerville was filed with the Ministry of Northern Development and Mines.

A geochemical report dated November 1, 1990 was also completed by R. Somerville covering a soil sampling survey done for Brothers Gold Corp. during August 5 and 6, 1990.

GEOLOGICAL SURVEYGENERAL GEOLOGY

The dominant feature of the township appears to be the Porcupine Destor Fault zone which traverses the township from Concession 4 on the western township boundary to Concession 1 on the eastern boundary. The fault zone would appear to be a highly schistose zone at least one quarter mile wide. Strong carbonate alteration is found along the fault zone.

According to Prest (1951-6) the township is underlain by intermediate volcanics containing faulted (?) inliers of older sediments and younger mafic to ultramafic intrusives. The whole package appears to be intruded by a number of granodioritic masses. Strong carbonate alteration has been noted in several areas in the township, probably reflecting intense alteration of ultramafic rocks.

This writer's observations tend to suggest that the age relationships between the sedimentary and volcanic (both acid and intermediate) are more complex than Prest has determined. The rhyolite and greywacke, and possibly some of the intermediate volcanics, appear to be coeval with a mafic/ultramafic event. Contrary to Prest, the writer believes that the ultramafic rocks were probably volcanic rather than intrusive in origin. Furthermore, the sections of strong carbonate alteration along the Porcupine Destor Fault Zone suggest that the fault probably followed for the most part an ultramafic flow comparable to those

exposed in the faulted inliers on Guibord Hill and in Concession 2, Lots 8 to 12.

Map # 1951-6 suggests that the property is largely underlain by granodiorite with a contact with intermediate volcanics located on both the north and south edges of the property. A small area of sediments is shown on the map on the eastern edge of the claim.

GEOLOGY OF THE PROPERTYIntroduction

Over a two day period (August 15 & 16, 1991) the author and an assistant carefully walked all the flagged lines and claim boundaries to find the outcrop locations. All the stream valleys on the property were checked and many areas between the lines were traversed. The outcrops were located and systematically chained in relation to the existing flagged lines. All the outcrops were examined by the author and the results of the mapping are displayed on Map No. 3 in the pocket of this report.

TABLE 1

TABLE OF LITHOLOGIC UNITS ON CLAIM # L1088230

CENEZOIC

RECENT

lake and stream deposits, peat

PLEISTOCENE

till, clay, gravel, minor, loosely cemented bedrock

till/conglomerates

----unconformity----

PRECAMBRIAN

granodiorite and feldspar porphyritic granodiorite

ROCK DESCRIPTIONS

The eastern two thirds of the claim is covered with about 15 metres to 20 metres of sandy clay and minor gravel beds, probably of Pleistocene age. As the land slopes down gradually to the Pike River, outcrops of Precambrian granodiorite are exposed. All the outcrops were mapped as granodiorite to feldspar porphyritic granodiorite.

The rock was fairly uniform over the outcrops examined. It consisted of a fine-grained granodiorite, greenish pink to pink in color, and containing frequent buff colored medium-grained feldspar phenocrysts, and, more rarely, small, clear quartz metacrysts. Where fresh, the matrix ranges from a dark yellowish grey-green with pink patchy tinting to a dull uniform maroon color.

In some outcrops the rock appears to be strongly sericitized and schistose, which gives it the dark yellowish tint. This rock was apparently interpreted by Hogg, and corroborated by Prest (p. 22), to be altered fragmentals and sediments. However, since the rock is uniformly porphyritic, the so-called contrast could only be distinguished as a color gradation between strongly sericitic and weakly sericitic rocks. At present, without stripping, this mineralogical difference cannot be mapped with any certainty.

A magnetometer survey completed in 1990 indicates two narrow high magnetic anomalies, possibly interrupted by a northwest trending fault. At 100N on LOW, an outcrop was mapped at least partially underlying one of these trends. There was no alteration or mineralization in the outcrops to explain the anomaly. It is possible that the source of the anomaly is very narrow and lies

south of the station, and therefore was not revealed in outcrop. However, the anomaly is sufficiently broad that the source should be evident in outcrop if it has a surface expression. It seems likely that the anomaly has its source in some buried magnetic structure.

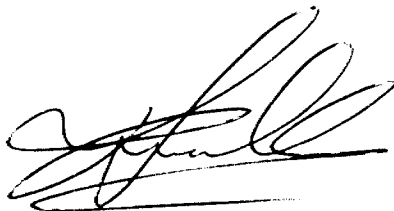
RECOMMENDATIONS

1. Extend the magnetometer survey to detail the magnetic anomalies between L0W and L28W
2. Strip the area between 90N and 100N on L0W to fully undercut the magnetic high anomaly in this area.
3. Run a VLF-EM survey on existing lines.

CERTIFICATE

I, Richard D. Somerville, residing at 1052 Esquimalt Avenue, West Vancouver, British Columbia, V7T 1J8 certify that:

1. I am a practising Consulting Geologist with offices at Suite 103, 255 West 1st Street, North Vancouver, B.C., V7M 3G8.
2. I am President of R. Somerville Geological and Mining Engineering Ltd.
3. I am Secretary-Treasurer of Brothers Gold Corp.
4. I am a Registered Professional Engineer of the Provinces of Ontario and British Columbia.
5. I am a Fellow of the Geological Association of Canada and a member of the Canadian Institute of Mining & Metallurgy.
6. I am a graduate of Queen's University at Kingston, Ontario, having received a B. Sc. (hon) degree majoring in Geology, and a B.A. degree majoring in physics and mathematics.
7. This survey was performed by me, and I believe that the work was conducted in a proper and professional manner.



R. Somerville, P.Eng.

North Vancouver, British Columbia
Nov 1, 1991

APPENDIX

Author	Date	SELECTED REFERENCES		Reference	Map Scale and/or Report Pages
		Title			
Jost, M.	1977	Nickel Deposits of Ontario, East Central Sheet		OGS Map P.1062	1:1 013 760
Lumbers, S.B. Milne, V.G.	1979	Ontario Geological Map, Explanatory Text, Legend and Diagrams of Major Lithologies, Structures and Zones of Metamorphism		OGS Map 2391	1:1 013 760
Lumbers, S.B. Milne, V.G.	1979	Ontario Geological Map, East Central Sheet		OGS Map 2393	1:1 013 760
MERQ-OGS	1984	Lithostratigraphic Map of the Abitibi Subprovince		OGS Map 2484 Que Map DV83-16	1:500 000
Meyn, H.D. Howarth, J.R.	1977	Molybdenum Deposits of Ontario, East Central Sheet		OGS Map P.1246	1:1 013 760
Meyn, H.D. Robertson, J.A.	1975	Iron Deposits of Ontario, East Central Sheet, Districts of Thunder Bay, Algoma, Cochrane, Sudbury, Timiskaming and Nipissing		ODM Map P.1043	1:1 013 760
Ministry of Natural Resources	1985	Ontario Mineral Map		ODM Map 2472	1:1 584 000
Minnes, D.G. Masham, J.S. Scott, D.W. Vos, M.A. & Yundt, S.E.	1983	Industrial Minerals of Ontario		OGS Map P.2591	1:1 500 000
ODM	1969	Mining Divisions and Resident Geologists Districts		ODM Map 2189	1:1 584 000
ODM	1974	Ontario Mineral Map		ODM Map 2310	1:1 584 000
ODM	1977	Ontario Geology and Principal Minerals		ODM Map 2389 (Rev.)	1:4 224 000

SELECTED REFERENCES

Author	Date	SELECTED REFERENCES		
		Title	Reference	Map Scale and/or Report Pages
ODMNA	1971	Ontario Geology and Principal Mineral Collecting Localities, Discover Ontario	ODMNA Map 2211	1:4 224 000
OGS	1986	Geological Highway Map, Northern Ontario	OGS Map 2506	1:1 600 000
Pyke, D.R., Ayres, L.D. Innes, D.G.	1973	Timmins - Kirkland Lake, Geological Compilation Series, Cochrane, Sudbury and Timiskaming Districts	ODM Map 2205	1:253 440
Robertson, J.A.	1976	Mineral Potential Map of Ontario, East Central Sheet	ODM Map P.1099	1:1 013 760
Robertson, J.A.	1982	Uranium and Thorium Deposits of Ontario, East Central Sheet, NTS 31/NW, 32/W, 41/N, 42	OGS Map P.2426	1:1 013 760
Springer, J.	1977	Ontario Mineral Potential, Timmins Sheet and Part of Noranda-Rouyn Sheet, Districts of Sudbury, Timiskaming and Cochrane	OGS Map P.1517	1:250 000
<u>GEOPHYSICAL MAPS</u>				
Data Plotting Services Inc.	1984	Matheson-Black River Area (BRIM) Magnetic Survey Total Field, based on Airborne Electromagnetic and Total Intensity Magnetic Survey, Matheson-Black River Area, by Questor Surveys Ltd. for the OGS. (1984)	MNDM Resident Geologist's Office, Kirkland Lake, Ontario	1:80 000
Data Plotting Services Inc.	1985	Matheson-Black River Area (BRIM) Airborne Magnetic Survey Second Vertical Derivative based on Airborne Electromagnetic and Total Intensity Magnetic Survey, Matheson-Black River Area, by Questor Surveys Ltd. for the OGS. (1984)	MNDM Resident Geologist's Office, Kirkland Lake, Ontario	1:100 000

Author	Date	SELECTED REFERENCES	Reference	Map Scale and/or Report Pages
		Title		
Digheem Surveys and Processing Inc.	1986	"Enhanced Shadow" Magnetics, Black River- Matheson Area (BRIM) based on Airborne Electromagnetic and Total Intensity Magnetic Survey, Matheson-Black River Area, by Questor Surveys Ltd. for the OGS. (1984)	MNDM Resident Geologist's Office, Kirkland Lake, Ontario	1:100 000
GSC	1970	Matheson, Cochrane District, Aeromagnetic Series	GSC Map 296G (Rev.)	1:63 360
GSC	1970	Ramore, Cochrane and Timiskaming Districts, Aeromagnetic Series	GSC Map 295G (Rev.)	1:63 360
GSC	1970	Timmins, Cochrane, Timiskaming and Sudbury Districts, Ontario, Total Field Contour Map Aeromagnetic Series	GSC Map 7085G	1:250 000
GSC	1970	Ramore, Cochrane and Timiskaming Districts, Ontario Aeromagnetic Series	GSC Map 8430G	1:31 680
GSC	1970	Matheson, Cochrane District, Ontario, Aeromagnetic Series	GSC Map 8431G	1:31 680
GSC	1970	Ramore, Cochrane and Timiskaming Districts, Aeromagnetic Series	GSC Map 8433G	1:31 680
GSC	1970	Matheson, Cochrane District, Aeromagnetic Series	GSC Map 8434G	1:31 680
GSC	1975	Ramore East, NTS 42A/8h, (High Resolution Aeromagnetic)	GSC Map 20 152	1:25 000
GSC	1975	Matheson East, NTS 42A/9b, (High Resolution Aeromagnetic)	GSC Map 20 153	1:25 000

Author	Date	SELECTED REFERENCES		Map Scales and/or Report Pages
		Title	Reference	
ODMNA	1971	Helicopter Radiophase Survey In-Line/In-Phase Contours, Guibord Township	ODMNA Map P.664	1:15 840
ODMNA	1971	Helicopter E-Phase Survey, Apparent Resistivity Contours, Guibord Township	ODMNA Map P.658	1:15 840
ODMNA	1971	Helicopter Gamma-Ray Spectrometer Survey, Total Count Contours, Guibord Township	ODMNA Map P.652	1:15 840
ODMNA	1971	Aeromagnetic Survey, Total Intensity Contours, Guibord Township	ODMNA Map P.646	1:15 840
ODMNA	1974	Aeromagnetic Index of Ontario	ODMNA Map 2229	1:1 900 800
OGS	1984	Airborne Electromagnetic and Total Intensity Magnetic Survey, Matheson-Black River Area, Guibord Township	OGS Map 80 596	1:20 000 1:31 680
OGS-GSC	1979	Airborne Gamma-Ray Spectrometric Total Count, Timmins, NTS 42A	OGS Map 80 280 GSC Map 35142G	1:250 000
OGS-GSC	1979	Airborne Gamma-Ray Spectrometric Potassium (Percent), Timmins, NTS 42A	OGS Map 80 281 GSC Map 35142G	1:250 000
OGS-GSC	1979	Airborne Gamma-Ray Spectrometric Uranium (eU), Timmins, NTS 42A	OGS Map 80 282 GSC Map 35142G	1:250 000
OGS-GSC	1979	Airborne Gamma-Ray Spectrometric Thorium (eTh), Timmins, NTS 42A	OGS Map 80 283 GSC Map 35142G	1:250 000
OGS-GSC	1979	Airborne Gamma-Ray Spectrometric eU/Th Ratio, Timmins, NTS 42A	OGS Map 80 284 GSC Map 35142G	1:250 000

Author	Date	SELECTED REFERENCES	Reference	Map Scale and/or Report Pages
		Title		
OGS-GSC	1979	Airborne Gamma-Ray Spectrometric Profiles of Integral U, Th, K, U/Th, U/K, Th/K for line 60 (1), Timmins, NTS 42A	OGS Map 80 315 GSC Map 35142G	1:250 000
OGS-GSC	1979	Airborne Gamma-Ray Spectrometric Profiles of Integral U, Th, K, U/Th, U/K, Th/K for line 61 (1), Timmins, NTS 42A	OGS Map 80 316 GSC Map 35142G	1:250 000
		<u>GEOLOGICAL MAPS AND REPORTS</u>		
Baker, C.L.	1982	Drift Thickness of the Ramore Area, Cochrane and Timiskaming Districts	OGS Map P.2477	1:50 000
Baker, C.L.	1982	Sand and Gravel Resources of the Ramore Area, Cochrane and Timiskaming Districts	OGS Map P.2489	1:50 000
Baker, C.L.	1985	Overburden Stratigraphy of the Matheson Area: Advancing Thoughts on Ice Fronts (Abstract)	OGS Geo.Sci. Seminar & Open House '85	p.9
Baker, C.L.	1985	Quaternary Geology of the Kirkland Lake Area, Districts of Cochrane and Timiskaming	OGS OFR 5553	144p.
Baker, C.L. McClenaghan, M.B. Steele, K.G.	1985	Reconnaissance Heavy Mineral and Geochemical Sampling of the Munro Esker, Lake Abitibi Area, Cochrane District	OGS MP 126	p.297-300
Baker, C.L. Seaman, A.A. Steele, K.G.	1980	Quaternary Geology of Ramore Area, Districts of Cochrane and Timiskaming	OGS Map P.2381	1:50 000
Baker, C.L. Steele, K.G.	1984	Sonic Drilling-Exploration Basics in the Matheson Area (Abstract)	OGS Geo. Sci. Seminar & Open House '85	p.23

Author	Date	SELECTED REFERENCES		Reference	Map Scales and/or Report Pages
		Title			
Baker, C.L. Seaman, A.A. Steele, K.G.	1980	Quaternary Geology of Ramore Area, Districts of Cochrane and Timiskaming		OGS Map P.2381	1:50 000
Baker, C.L. Steele, K.G.	1984	Sonic Drilling-Exploration Basics in the Matheson Area (Abstract)		OGS Geo. Sci. Seminar & Open House '85	p.23
Baker, C.L. Steele, K.G. McClenaghan, M.B.	1985	Reconnaissance Till Sampling Program, Matheson-Lake Abitibi Area, Cochrane District		OGS MP 126	p.329-333
Baker, C.L. Steele, K.G. McClenaghan, M.B.	1986	Gold Grains in Sonic Drill Core Samples (1985) from the Lake Abitibi-Matheson Area, District of Cochrane		OGS Map P.2958	1:100 000
Barlow, R.B. Pitcher, D.H.	1984	An Airborne Electromagnetic-Magnetic Survey of the Black River-Matheson (BRIM) Area, District of Cochrane		OGS MP 119	p.287-289
Bath, A.C.	1985	Black River-Matheson Economic Geologist Program		OGS MP 126	p.301-311
Bath, A.C.	1985	Black River-Matheson Economic Geologist Program (Abstract)		OGS Geo. Sci. Seminar & Open House '85	p.8
Bath, A.C.	1986	Black River-Matheson Economic Geologist Program		OGS MP 132	p.421-430
Burrows, A.G.	1912	Gold Area in the Townships of Munro and Guibord, Timiskaming District		OBM Map 21C	1:63 360
Burrows, A.G.	1912	The Porcupine Gold Area, Second Report, Ontario		OBM AR 21 pt. 1	p.205-249


Author	Date	SELECTED REFERENCES		Reference	Map Scales and/or Report Pages
			Title		
Corkill, E.T.	1911		Mines of Ontario	OBM AR 1911 v. 20, pt. 1	p.86-118
Corkill, E.T.	1912		Mines of Ontario	OBM AR 1912 v. 21, pt. 1	p.100-168
Ferguson, S.A. Groen, H.A. Haynes, R.	1971		Gold Deposits of Ontario	ODM Min. Res. Circ. 13	315p.
Fortescue, J.A.C.	1984		Summary of Activities 1984, BRIM Program	OGS MP 119	p.274-277
Gibson, T.W.	1910		Statistical Review	OBM AR 1910 v. 19, pt. 1	p.5-56
Ginn, R.M. Leahy, E.J. Savage, W.S.	1962		Munro-Pontiac Sheet, District of Cochrane	ODM Map P.120	1:63 760
GSC	1981		Magnetic Anomaly Map, Timiskaming-Kapuskasing Region	GSC Map 1563A	1:1 000 000
Guillet, R.	1969		Ontario Marl Deposits	ODM Map 2183	1:1 013 760
Hewitt, D.F. Vos, M.A.	1972		Ontario Limestone Quarries, 1971	ODM Map 2264 (Rev.)	1:1 013 760
Hodgson, C.J.	1983		Preliminary Report on the Timmins-Kirkland Lake Area Gold Deposits File	OGS OFR 5467	434p.
Hopkins, P.E.	1915		Beatty-Munro Gold Area, Timiskaming District	OBM Map 24A AR 24, pt.1	1:63 360 p.171-184

Author	Date	SELECTED REFERENCES		Map Scales and/or Report Pages
		Title	Reference	
Hughes, O.L.	1959	Surficial Geology of Iroquois Falls, Cochrane District, Ontario	GSC Map 46-1959	1:126 720
Hughes, O.L.	1960	Surficial Geology of Kirkland Lake, Timiskaming and Cochrane Districts, Ontario	GSC Map 1-1960	1:126 720
Hurst, M.E.	1943	Abitibi-Timiskaming Area, Districts of Cochrane and Timiskaming	ODM Map 1934A	1:126 720
Jensen, L.S.	1974	Ramore Area, Districts of Timiskaming and Cochrane	ODM MP 59	p.99-106
Jensen, L.S.	1975	Ramore Area, Districts of Timiskaming and Cochrane	ODM MP 63	p.73-75
Jensen, L.S.	1985	Precambrian Geology of the Ramore Area, Northeastern Part, District of Cochrane	OGS Map P.2861	1:15 840
Jensen, L.S.	1985	Precambrian Geology of the Ramore Area, Northwestern Part, District of Cochrane	OGS Map P.2860	1:15 840
Jensen, L.S.	1985	Precambrian Geology of the Ramore Area	OGS OFM 12	1:50 000
Jensen, L.S. Baker, C.L.	1986	Preliminary Results of Bedrock Samples from the Sonic Drilling Program (1985) in the Lake Abitibi-Matheson Area	OGS Map P.2986	1:100 000
Jensen, L.S. Langford, F.F.	1983	Geology and Petrogenesis of the Archean Abitibi Belt in the Kirkland Lake Area, Ontario	OGS OFR 5455	520p.
Jensen, L.S. Langford, F.F.	1985	Geology and Petrogenesis of the Archean Abitibi Belt in the Kirkland Lake Area, Ontario	OGS MP 123	130p.
Johnstone, R. Trowell, N.F.	1985	Precambrian Geology of the Black River-Matheson Area	OGS OFM 13	1:15 840

Author	Date	SELECTED REFERENCES		Map Scales and/or Report Pages
		Title	Reference	
Johnstone, R. Trowell, N.F.	1985	Precambrian Geology of the Black River-Matheson (BRIM) Area, District of Cochrane	OGS MP 126	p.291-296
Kindle, E.D.	1936	Gold Occurrences of Ontario, East of Lake Superior	GSC Memoir No.192	
Lee, H.A.	1979	Northern Ontario Engineering Geology Terrain Study, Data Base Map, Kirkland Lake	OGS Map 5030	1:100 000
Lee, H.A.	1979	Northern Ontario Engineering Geology Terrain Study, Data Base Map, Iroquois Falls	OGS Map 5027	1:100 000
Lovell, H.L. de Grijs, J.W.	1973	Report of the Kirkland Lake Resident Geologist	ODM MP 54	p.33-52
Lovell, H.L. Grabowski, G. Guindon, D. Bath, A.C.	1986	Kirkland Lake Resident Geologist Area, Northern Region	OGS MP 128	p.179-212
Malczak, J.	1985	Industrial Mineral Potential of the Black River-Matheson (BRIM) Area, District of Cochrane	OGS MP 126	p.326-328
Malczak, J.	1985	Overview of the Industrial Mineral Potential of the Black River-Matheson (BRIM) Area (Abstract)	OGS Geo. Sci. Seminar & Open House '85	p.9
McClenaghan, M.B.	1985	Backhoe Sampling and Analytical Procedures: Fingerprinting the Drift (Abstract)	OGS Geo. Sci. Seminar & Open House '85	p.10
Middleton, R.S.	1976	Gravity Survey of Geological Structures in the Timmins and Matheson Area, NTS 42A, Cochrane, Sudbury and Timiskaming Districts	ODM GR 135 Maps 2321 2322	

Author	Date	SELECTED REFERENCES		Reference	Map Scales and/or Report Pages
		Title			
Moore, E.S.	1936	Ramore Area, District of Cochrane		ODM Map 45d	1:47 520
Moore, E.S.	1936	Geology and Ore Deposits of the Ramore Area, Cochrane District		ODM AR 1936 v.45, pt. 6	p.1-37
ODMNA	1970	Descriptive Notes for Multi-Sensor Helicopter Borne Geophysical Survey of Warden, Coulson, Beatty, Munro, Hislop and Guibord Townships		ODMNA	
OGS	1984	Ontario Mineral Deposit Inventory		OGS OFR 5470	
Pitcher, D.H.	1985	A Correlation of Airborne and Ground Electromagnetics With Sonic Drilling Results in the Black River-Matheson Area		OGS MP 126	p.334-340
Ploeger, F. Grabowski, G.	1980	Guibord Township, District of Cochrane		OGS Map P.872	1:15 840
Prest, V.K.	1953	Township of Guibord, District of Cochrane		ODM Map 1951-6	1:12 000
Prest, V.K.	1953	Geology of Guibord Township, Cochrane District		ODM AR 1951 v. 60, pt. 9	56p.
Reade, M.	1952	Mines of Ontario in 1950		ODM AR 1951 v. 60, pt. 2	
Reade, M.	1953	Mining Operations in 1951		ODM AR 1952 v.61, pt. 2	
Richard, J.A. McClenaghan, M.B.	1985	Quaternary Geology of the Porquois Junction Area, District of Cochrane, (42A/10)		OGS Map P.2949	1:50 000


Author	Date	SELECTED REFERENCES		Reference	Map Scale and/or Report Pages
		Title			
Rogers, W.R.	1925	Statistical Review of Ontario's Mineral Industry in 1923		ODM AR 1924 v. 33, pt. 1	
Sado, E.V.	1985	Summary of Activities 1985, Operation Black River-Matheson (BRIM)		OGS MP 126	p.287-290
Sado, E.V.	1985	Introduction to the Black River-Matheson Program (BRIM) (Abstract)		OGS Geo. Sci. Seminar & Open House '85	p.5
Sado, E.V.	1986	Summary of Activities 1986, Operation Black River-Matheson (BRIM)		OGS MP 132	
Satterly, J.	1958	Geological Map of the Province of Ontario		ODM Map 1958B	1:1 267 2
Satterly, J.	1968	Aeromagnetic Maps of Carbonatite-Alkalic Complexes in Ontario		ODM Map P.452	1:4 224 0
Sinclair, D.G. Cleland, R.H. Cooper, E.F. et al.	1935	Mines of Ontario in 1933		ODM AR 1934 v. 43, pt. 1	
Sinclair, D.G. Keeley, E.C. Cooper, D.F. et al.	1936	Mines of Ontario in 1934		ODM AR 1935 v. 44, pt. 1	p.67-167
Steele, K.G.	1985	Sonic Drilling- Rigs, Rods and Reasons (Abstract)		OGS Geo. Sci. Seminar & Open House '85	
Steele, K.G. Baker, C.L. McClenaghan, M.B.	1986	Reconnaissance Till Sampling Program, Matheson-Lake Abitibi Area, District of Cochrane		OGS MP 132	p.398-403

Author	Date	SELECTED REFERENCES		Reference	 Scales and/or Report Pages
		Title			
Steele, K.G. McClenaghan, M.B. Baker, C.L.	1986	Gold Grains in Backhoe Till Samples (1984-85) from the Matheson-Lake Abitibi Area, District Cochrane		OGS Map P.2983	1:100 000
Strangway, D.W. Geissman, J.W. Bambrick, J. Letros, S. et al.	1981	Magnetism and Stratigraphy in Volcanic and Sedimentary Rocks of the Abitibi Belt		OGS MP 98	p.251-266
Tremblay, M.	1940	Statistical Review of the Mineral Industry of Ontario for 1938		ODM AR 1939 v. 48, pt. 1	
Tremblay, M.	1941	Statistical Review of the Mineral Industry of Ontario for 1939		ODM AR 1940 v. 49, pt. 1	
Vagners, U.J.	1984	Quaternary Geology of the Matheson Area, District of Cochrane		OGS Map P.2735	1:50 000
Whittaker, P.J.	1985	Regional Metallogensis of the BRIM Area, District of Cochrane (Abstract)		OGS Geo. Sci. Seminar & Open House '85	
Whittaker, P.J.	1986	Metallogenic studies in the Black River-Matheson Area, Cochrane District		OGS OFM 65	
Whittaker, P.J. Malczak, J.	1984	Mineral Deposits Investigation in the Black River-Matheson (BRIM) Area, District of Cochrane		OGS MP 119	p.290-294
Young, A.C.	1937	Statistical Review of the Mineral Industry of Ontario for 1935		ODM AR 1936 v. 45, pt. 1	
Young, A.C.	1939	Statistical Review of the Mineral Industry of Ontario, 1938		ODM AR 1938 v. 47, pt. 1	

Author	Date	SELECTED REFERENCES		Map Scales and/or Report Pages
		Title	Reference	
Lorsong, J.	1975	Stratigraphy and Sedimentology of the Porcupine Group (Early Precambrian), Northeastern Ontario	Unpub. BSc Thesis U of Toronto	p.281-303
MacRae, N.D.	1969	Ultramafic Intrusions of the Abitibi Area, Ontario	Can. Jour. of Earth Sci. v. 6	
Middleton, R.S.	1975	Gravity Control Network in the Timmins, Matheson and Cobalt Area, Cochrane and Timiskaming Districts, Ontario	ODM GR 127	

Author	Date	SELECTED REFERENCES		Reference	Map Scales and/or Report Pages
		Title			
		<u>JOURNAL ARTICLES, THESES AND TECHNICAL REPORTS</u>			
Agterberg, F.P. Chung, C.F. Fabbri, A.G. Kelly, A.M.	1972	Geomathematical Evaluation of Copper and Zinc Potential of the Abitibi Area, Ontario and Quebec		GSC Paper 71-41	55p.
Canada Department of Agriculture	1978	Soils of Timmins-Noranda-Rouyn Area, Ontario, NTS 42A-32D		Can. Dept. of Agri. Soil Surv. Rept. No. 46	
Goodwin, A.M.	1980	Archean Volcanic Studies in the Timmins-Kirkland Lake-Noranda Region of Ontario and Quebec		GSC Bull. 278 Map 1461A	51p. 1:250 000
Goodwin, A.M.	1980	Geology of Timmins-Kirkland Lake, Ontario-Quebec		OGS Map 1461A acc. Bull. 278	
Grubb, P.L.C.	1962	Serpentinization and Chrysotile Formation in the Matheson Ultrabasic Belt, Northern Ontario		Econ. Geol. v. 57	p.1228-12
Hughes, O.L.	1959	Surficial Geology of Smooth Rock and Iroquois Falls Map Areas, Cochrane District, Ontario		Unpub. PhD Thesis U of Kansas	
Jensen, L.S.	1985	Stratigraphy and Petrogenesis of Archean Metavolcanic Sequences, Southwestern Abitibi Subprovince, Ontario		GAC Spec. Paper No. 28	p.65-88
Kutina, J. Fabbri, A.	1972	Relation of Structural Lineaments and Mineral Occurrences in the Abitibi Area		GSC Paper 71-9	
Lee, H.A.	1968	An Ontario Kimberlite Occurrence Discovered by Application of the Glacifocus Method to a Study of the Munro Esker		GSC Paper 68-7	3p.

SELECTED REFERENCES

Author	Date	SELECTED REFERENCES		Reference	 and/or Report Pages
		Title			

GILBOED TOWNSHIP

GSC INDEX TO PUBLICATION

Words searched:

Guibord Township

Index Volume	Listing:	Report Volume	Part	Page
1927 to 1950	Guibord Tp., Coch Gold deposit	Memoir 192		31,33
		Economic Geology 15		62
1951 to 1959	Guibord Tp., Coch Gravel	MAP 46 1959		

Report of Work Conducted After Recording Claim

Mining Act

Transaction Number
DOCUMENT No.
W9180-05092

Personal information collected on this form is obtained under the authority of the Ministry. Its collection should be directed to the Provincial Manager, Mining Lands, Ministry of Northern Development and Mines, 1000 Bay Street, Toronto, Ontario, P3E 6A5, telephone (705) 870-7284.



900

- Instructions:**
- Please type or print and submit in duplicate.
 - Refer to the Mining Act and Regulations for requirements of the Recorder.
 - A separate copy of this form must be completed for each Work Group.
 - Technical reports and maps must accompany this form in duplicate.
 - A sketch, showing the claims the work is assigned to, must accompany this form.

Recorded Holder(s) BROTHERS GOLD CORP.	Client No. 112480
Address 103-255 W. 1st STREET NORTH VANCOUVER, BC. V7M 3G8	Telephone No. (604) 986-5766
Mining Division LARDER LAKE	M or G Plan No. G-3642
Township/Area GUIBORD	
Dates Work Performed From: AUGUST 15, 1991 To: AUGUST 16, 1991 INCLUSIVE	

Work Performed (Check One Work Group Only)

Work Group	Type
<input checked="" type="checkbox"/> Geotechnical Survey	GEOLOGICAL SURVEY
<input type="checkbox"/> Physical Work, including Drilling	RECEIVED
<input type="checkbox"/> Rehabilitation	
<input type="checkbox"/> Other Authorized Work	JAN 24 1992
<input type="checkbox"/> Assays	1438
<input type="checkbox"/> Assignment from Reserve	MINING LANDS DIVISION

Total Assessment Work Claimed on the Attached Statement of Costs \$ 2214.00

Note: The Minister may reject for assessment work credit all or part of the assessment work submitted if the recorded holder cannot verify expenditures claimed in the statement of costs within 30 days of a request for verification.

Persons and Survey Company Who Performed the Work (Give Name and Address of Author of Report)

Name	Address
RD. SOMERVILLE, P. ENG.	103-255 W. 1st St., NORTH VANCOUVER, BC V7M 3G8

Attach a schedule if necessary

Certification of Beneficial Interest * See Note No. 1 on reverse side

I certify that at the time the work was performed, the claims covered in this work report were recorded in the current holder's name or held under a beneficial interest by the current recorded holder.

Date: **Nov. 14/91** Recorder Holder or Agent (Signature): **X**

Certification of Work Report

I certify that I have a personal knowledge of the facts set forth in this Work report, having performed the work or witnessed same during and/or after its completion and annexed report is true.

Name and Address of Person Certifying: **R. D. SOMERVILLE, 103-255 W. 1st St., NORTH VANCOUVER, BC, V7M 3G8**

Telephone No. (604): **986-5766** Date: **NOV. 14, 1991** Certified By (Signature): **[Signature]**

For Office Use Only

Total Value Cr. Recorded 81794.20 419.80 (banked)	Date Recorded Nov. 21, 1991	Mining Recorder [Signature]	Received Stamp RECEIVED LARDER LAKE MINING DIVISION NOV 22 1991
	Deemed Approval Date FEBRUARY 19, 1992	Date Approved	
	Date Notice for Amendments Sent		



Ministry of Northern Development and Mines

Ministère du Développement du Nord et des mines

Statement of Costs for Assessment Credit

État des coûts aux fins du crédit d'évaluation

Mining Act/Loi sur les mines

Transaction No./N° de transaction
W9180.05092

2.14435

Personal information collected on this form is obtained under the authority of the Mining Act. This information will be used to maintain a record and ongoing status of the mining claim(s). Questions about this collection should be directed to the Provincial Manager, Mining Lands, Ministry of Northern Development and Mines, 4th Floor, 159 Cedar Street, Sudbury, Ontario P3E 6A5, telephone (705) 670-7264.

Les renseignements personnels contenus dans la présente formule sont recueillis en vertu de la Loi sur les mines et serviront à tenir à jour un registre des concessions minières. Adressez toute question sur la collecte de ces renseignements au chef provincial des terrains miniers, ministère du Développement du Nord et des Mines, 159, rue Cedar, 4^e étage, Sudbury (Ontario) P3E 6A5, téléphone (705) 670-7264.

1. Direct Costs/Coûts directs

Type	Description	Amount Montant	Totals Total global
Wages Salaires	Labour Main-d'oeuvre	\$1500	
	Field Supervision Supervision sur le terrain		\$1500
Contractor's and Consultant's Fees Droits de l'entrepreneur et de l'expert-conseil	Type Typing	\$125	
			\$125
Supplies Used Fournitures utilisées	Type REPORT Reproduction, Maps	\$95	
	Field Supplies	25	
			\$120
Equipment Rental Location de matériel	Type ARO all terrain vehicle	\$100	
			\$100
Total des coûts directs			\$1845

2. Indirect Costs/Coûts indirects

** Note: When claiming Rehabilitation work Indirect costs are not allowable as assessment work. Pour le remboursement des travaux de réhabilitation, les coûts indirects ne sont pas admissibles en tant que travaux d'évaluation.

Type	Description	Amount Montant	Totals Total global
Transportation Transport	Type Toyota 4x4	\$120	
	GAS/oil etc	\$40	
			\$160
Food and Lodging Nourriture et hébergement	Accommodation	N/C	
	FOOD	\$290	
			\$290
Mobilization and Demobilization Mobilisation et démobilitation	400 miles @ \$.15/mile	\$60	
			\$60
Sub Total of Indirect Costs			\$110
Total partiel des coûts indirects			\$110
Amount Allowable (not greater than 20% of Direct Costs)			\$369
Montant admissible (n'exécédant pas 20 % des coûts directs)			\$369
Total of Direct and Allowable Indirect Costs			\$2,214
			\$2,214

Note: The recorded holder will be required to verify expenditures claimed in this statement of costs within 30 days of a request for verification. If verification is not made, the Minister may reject for assessment work all or part of the assessment work submitted.

Note: Le titulaire enregistré sera tenu de vérifier les dépenses demandées dans le présent état des coûts dans les 30 jours suivant une demande à cet effet. Si la vérification n'est pas effectuée, le ministre peut rejeter tout ou une partie des travaux d'évaluation présentés.

Filing Discounts

- Work filed within two years of completion is claimed at 100% of the above Total Value of Assessment Credit.
- Work filed three, four or five years after completion is claimed at 50% of the above Total Value of Assessment Credit. See calculations below.

Total Value of Assessment Credit	Total Assessment Claimed
	x 0.50 =

Remises pour dépôt

- Les travaux déposés dans les deux ans suivant leur achèvement sont remboursés à 100 % de la valeur totale susmentionnée du crédit d'évaluation.
- Les travaux déposés trois, quatre ou cinq ans après leur achèvement sont remboursés à 50 % de la valeur totale du crédit d'évaluation susmentionné. Voir les calculs ci-dessous.

Valeur totale du crédit d'évaluation	Evaluation totale demandée
	x 0.50 =

Certification Verifying Statement of Costs

I hereby certify: that the amounts shown are as accurate as possible and these costs were incurred while conducting assessment work on the lands shown on the accompanying Report of Work form.

that as Company Secretary I am authorized (Recorded Holder, Agent, Position in Company)

to make this certification

Attestation de l'état des coûts

J'atteste par la présente: que les montants indiqués sont le plus exact possible et que ces dépenses ont été engagées pour effectuer les travaux d'évaluation sur les terrains indiqués dans la formule de rapport de travail ci-joint.

Et qu'à titre de Plutaire enregistré, représentant, poste occupé sans la compagnie je suis autorisé

à faire cette attestation.

Signature [Signature] Date Nov 14/91



Ontario

Ministry of
Northern Development
and Mines

Ministère du
Développement du Nord
et des Mines

Geoscience Approvals Section
Mining Lands Branch
159 Cedar Street, 4th Floor
Sudbury, Ontario
P3E 6A5

Telephone: (705) 670-7264
Fax: (705) 670-7262

Our File: 2.14435
Transaction #: W9180.05092

May 28, 1992

Mining Recorder
Ministry of Northern Development
and Mines
4 Government Road East
Kirkland Lake
P2N 1A2

RE: APPROVAL OF ASSESSMENT WORK ON MINING CLAIM L 1088230 IN GUIBORD
TOWNSHIP.

The Assessment Credits for Geology, section 12 of the Mining Act
Regulations, as listed on the attached Assessment Work Credit form,
have been approved as of May 25, 1992.

Please indicate this approval on the claim record sheets.

If you have any questions please call Clive Stephenson at
(705) 670-7251.

Yours sincerely,

Ron C. Gashinski
Senior Manager, Mining Lands Branch
Mines and Minerals Division

CS
CDS/jl

Enclosures:

cc: Assessment Files Office
Toronto, Ontario

Resident Geologist
Kirkland Lake, Ontario

ASSESSMENT WORK CREDIT FORM

FILE NUMBER: 2.14435
DATE: May 25, 1992
TRANSACTION #: W9180.05092

RECORDED HOLDER: Brothers Gold Corp.
CLIENT #: 112480
TOWNSHIP/AREA: Guibord

CLAIM #	VALUE OF ASSESSMENT WORK DONE ON THIS CLAIM	VALUE APPLIED TO THIS CLAIM	VALUE ASSIGNED FROM THIS CLAIM
L 1088230	\$ 1,350.00	\$ 1,350.00	\$ 0.00



R. Somerville Geological & Mining Engineering Ltd.

Ste. 103 - 255 West 1st Street • North Vancouver, B.C., Canada V7M 3G8 • (604) 986-5766 Fax (604) 986-8701

2.14485

November 19, 1991

The Mining Recorder
Ontario Ministry of
Northern Development & Mines
4 Government Road
Kirkland Lake, Ontario
P2N 1A2

Dear Sir:

Please find enclosed two copies of the following report:

A GEOLOGICAL REPORT ON CLAIM # L1088230 LOCATED IN THE SW 1/4 OF THE N 1/2 LOT 11 CON. 3 IN GUIBORD TOWNSHIP, ONTARIO, LARDER LAKE MINING DIVISION, FOR BROTHERS GOLD CORP.

Also enclosed is a completed Statement of Costs for Assessment Credit, and a completed Report of Work Conducted After Recording Claim. I trust that you will find everything in good order. Should you require anything further, please do not hesitate to call.

Yours very truly,

R. Somerville, P. Eng.

c:\rsgmwp51\broguib

RECEIVED
LARDER LAKE
MINING DIVISION

NOV 21 1991

TIME

9:45 a.m.

18

MUNRO TWP N. 376

NOTES

- 400' surface rights reservation along the shores of all lakes and rivers.
- R₁ Surface and Mining Rights Withdrawn from Staking, section 36/80 order no. W18/86
- R₂ Surface and Mining Rights Withdrawn from Staking, section 36/80 order no. W63/87 003/88L OPENS W63/87
- O10/87 NR Opens Part of W18/86
- 0-10/87 NR PART OF W18/86

THE INFORMATION THAT APPEARS ON THIS MAP HAS BEEN COMPILED FROM VARIOUS SOURCES AND ACCURACY IS NOT GUARANTEED. THOSE WISHING TO STAKE MINING CLAIMS SHOULD CONSULT WITH THE MINING RECORDER, MINISTRY OF NORTHERN DEVELOPMENT AND MINES, FOR ADDITIONAL INFORMATION ON THE STATUS OF THE LANDS SHOWN HEREON.

NOTICE OF FORESTRY ACTIVITY

THIS TOWNSHIP / AREA FALLS WITHIN THE WATABEAG MANAGEMENT UNIT AND MAY BE SUBJECT TO FORESTRY OPERATIONS. THE MNR UNIT FORESTER FOR THIS AREA CAN BE CONTACTED AT: P.O. BOX 129 SWASTIKA, ONT. POK ITO 705-642-3222

LEGEND

- PATENTED LAND (P)
- PATENTED FOR SURFACE RIGHTS ONLY (P or C)
- HOUSE (H)
- LICENSED OCCUPATION (L.O.)
- CROWN LAND SALES (C.S.)
- LOCATED LAND (Loc.)
- CONTROLLED (C)
- MINING RIGHTS ONLY (M.R.)
- SURFACE RIGHTS ONLY (S.R.)
- HIGHWAY & ROUTE NO. (H.W.)
- ROADS (R)
- RAILS (R.L.)
- RIVERS (R.V.)
- POWER LINES (P.L.)
- MAPCH (M.C.H.)

TOWNSHIP OF

SUDBURY

MUNICIPALITY OF COCHRANE

LARDER LAKE MINING DIVISION

SCALE: 1:50,000 (1:25,000)

DATE OF ISSUE

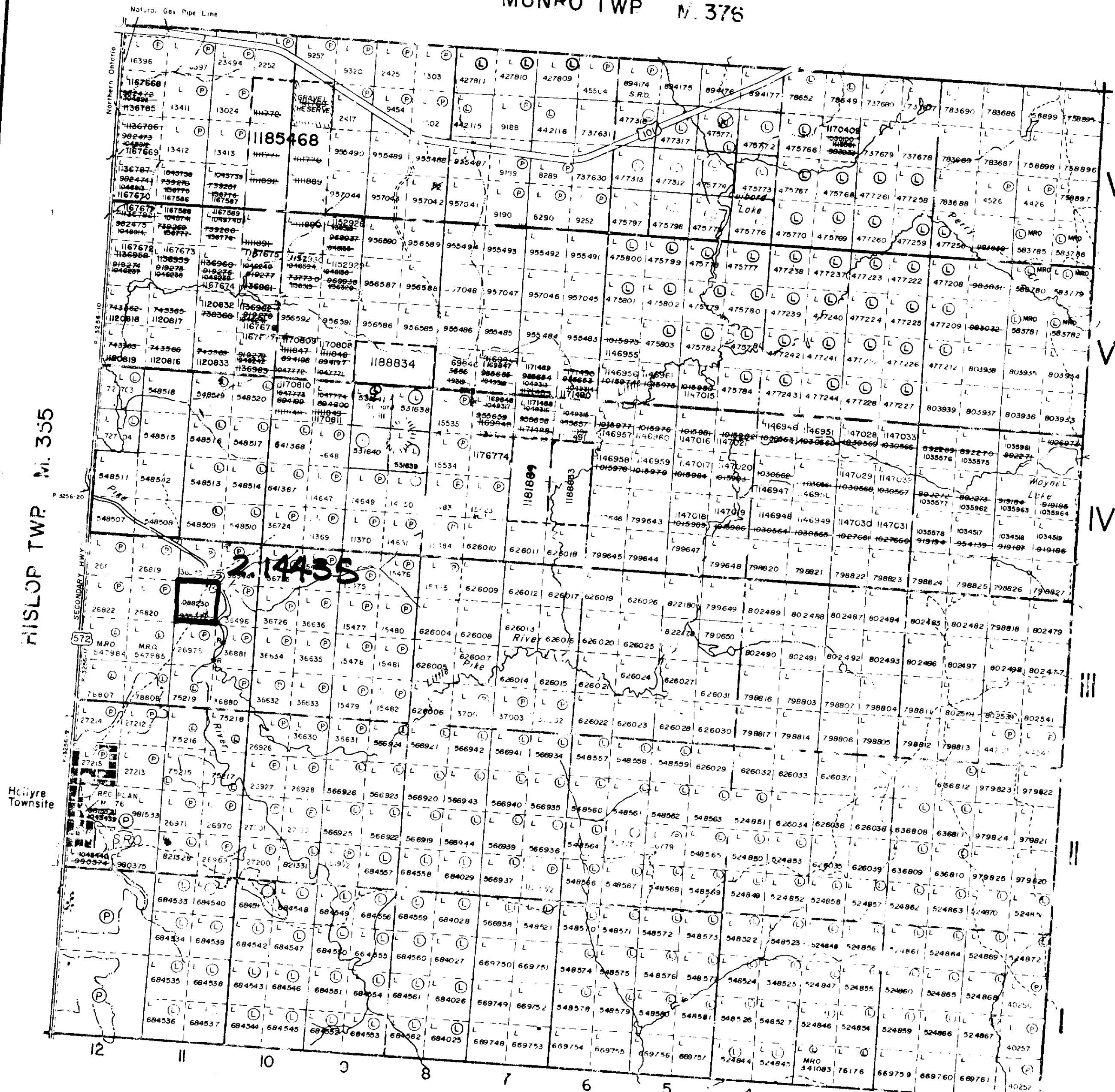
JAN 23 1992

LARDER LAKE MINING RECORDER'S OFFICE

DATE: 14 Oct 91

PLAN NO. G.3642

ONTARIO DEPARTMENT OF MINES AND NORTHERN AFFAIRS



COOK TWP. M. 339

TOWNSHIP SUBJECT TO FORESTRY OPERATIONS

COPY OF THIS MYLAR ARCHIVED OCT. 21, 1991



1/4 mile to the north to
concession III - IV line

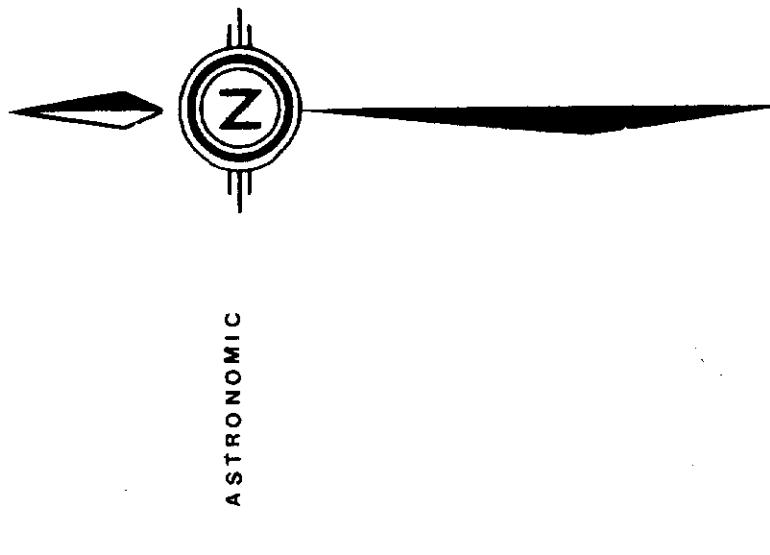
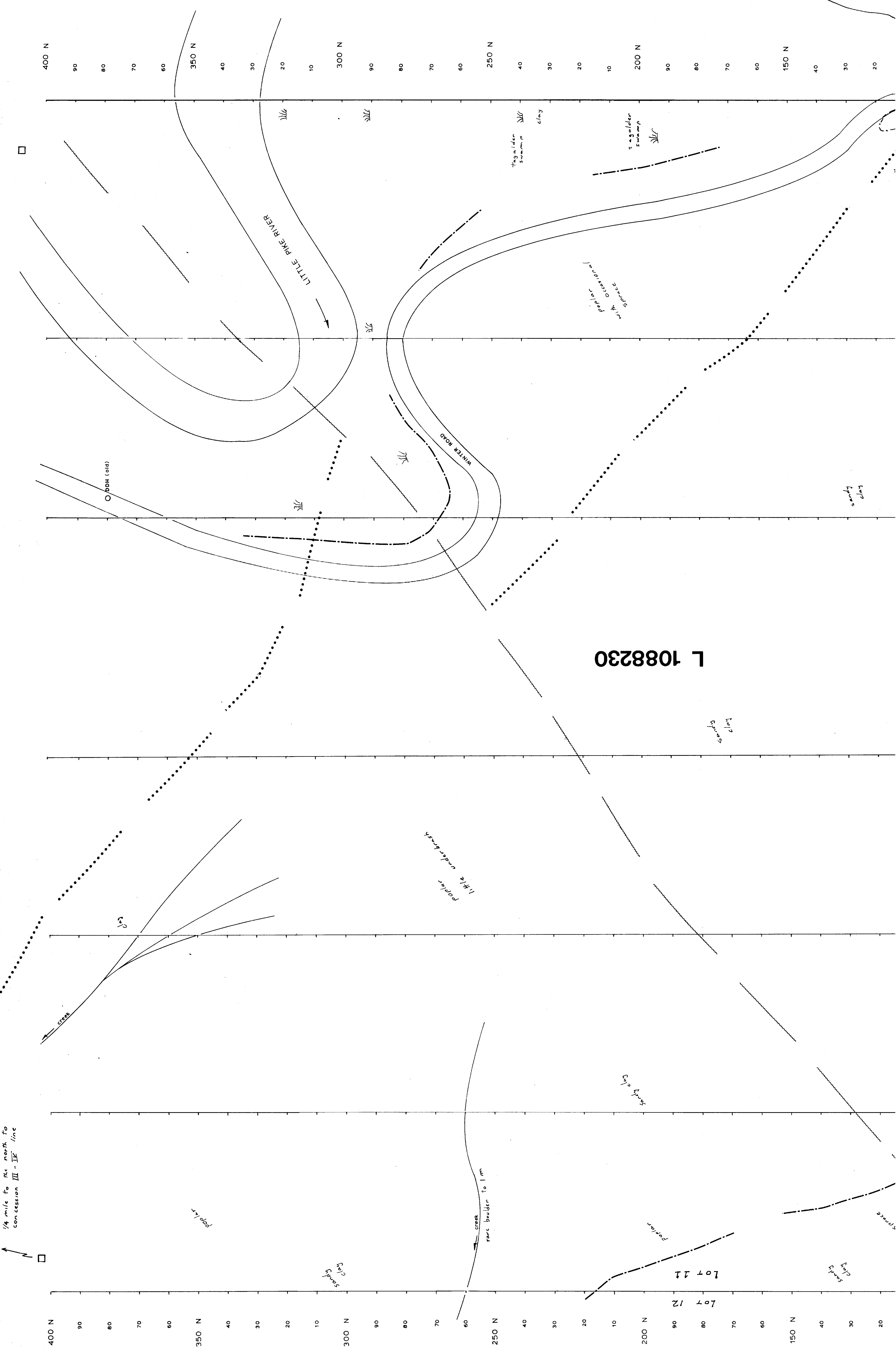


TABLE OF LITHOLOGIC UNITS

CENOZOIC
Recent lake and stream deposits, peat
Pleistocene till, clay, gravel, till/conglomerates
--- UNCONFORMITY ---
PRECAMBRIAN
(1) granodiorite & feldspar porphyritic granodiorite

SYMBOLS

Magnetic trend
Outcrop	X
Outcrop area	○
CLAIM POST	□
FOREST TYPE BOUNDARY	---

L 1088230

Lot 11
Lot 12

400 N 90 80 70 60 50 40 30 20 10 300 N 90 80 70 60 50 40 30 20 10 250 N 40 30 20 10 200 N 90 80 70 60 50 40 30 20 150 N 40 30 20