

42A08NW0034 63.5465 HISLOP

010

Diamond Drill Logs

Hislop Twp.

A. Gelinas

1989

MINISTRY OF NORTHERN
DEVELOPMENT AND MINES

7
Timmins, Ont.
March 29/89

APR 1 1989

63.5465

OMEP OFFICE

Sir -

In 1986 we found a fault that ran east to west and 6 ft. wide at north-east corner of that claim. We cleaned it and assayed and found traces of gold.

In spring of 1987 we bought a drill and drilled a hole at that corner crossing the fault at 70 ft. deep, again traces of gold showed in sample.

In spring of 1988 we applied for OMEP to help us with the expenses of cleaning further west on that same fault and drilled a hole 179.9 ft. deep, again traces of gold.

The reason we drilled is to find gold on this property.

Aislin' Pelissier
29 Laurier Ave.
Timmins, Ont.
P4N 4G6.

OM87-6-I-356



Ontario

THE MINING ACT - MINISTRY OF NATURAL RESOURCES
DIAMOND DRILLING LOG

Start a new page for every new hole, but fill in top portion of form only on first page for each hole.

FILL IN ON EVERY PAGE

HOLE NO. 88-1 PAGE NO. 1

DRILLING COMPANY GELINAS		COLLAR ELEVATION	BEARING OF HOLE FROM TRUE NORTH 345	TOTAL FOOTAGE 178'09"	DIP OF HOLE AT COLLAR 52°	LOCATION OF HOLE IN RELATION TO A FIXED POINT ON THE CLAIM The hole collar is located 40 feet west of an 320 320 feet south of the No. 1 post of claim 43454	MAP REFERENCE NO. HISLOP	CLAIM NO. 43454
DATE HOLE STARTED May 7, 1988	DATE COMPLETED	DATE LOGGED May 13, 1988	LOGGED BY A.C. BATH (MNDM)		ft	LOCATION (Tp., Lot, Con. OR Lot. and Long.) SW 1/4, S 1/2, lot 8, con II, HISLOP	PROPERTY NAME GELINAS	
EXPLORATION CO., OWNER OR OPTIONEE GELINAS		DATE SUBMITTED May 13, 1988	SUBMITTED BY (Signature) L. GELINAS		ft			
					ft			

FOOTAGE FROM TO		ROCK TYPE	DESCRIPTION Colour, grain size, texture, minerals, alteration, etc.	PLANAR FEATURE ANGLE	CORE SPECIMEN FOOTAGE †	YOUR SAMPLE NUMBER	SAMPLE FOOTAGE FROM TO		SAMPLE LENGTH	ASSAYS †
0	87'03"	Fe tholeiitic Basalt	Olive to forest green, aphanitic to fine grained, magnetic basalt. Massive, with disseminated, less than 1mm sized cubes and irregular blebs of pyrite and, rarely, pyrrhotite which in aggregate comprise less than 1% of the rock. Occasional 1-3mm wide stringers and veinlets of white quartz-calcite-epidote-hematite-cubic pyrite cross the core at various angles to the C.A. 50'09" - 52'03": Pervasive epidote alteration is cut by epidote-filled fractures.							
87'03"	104'00"	Interflow Sediments	Charcoal grey to dirty grey colored, microcrystalline to very fine grained, non magnetic to weakly magnetic and generally lacking sedimentary features. Variably tuffaceous and/or cherty. 87'03" - 92'00": Dark grey, cherty, nonmagnetic. Where fractured, light grey to buff colored alteration halos are developed							

* For features such as foliation, bedding, schistosity, measured from the long axis of the core.

† Additional credit available. See Assessment Work Regulations.



Ontario

THE MINING ACT - MINISTRY OF NATURAL RESOURCES
DIAMOND DRILLING LOG

Start a new page for every new hole, but fill in top portion of form only on first page for each hole.

FILL IN ON EVERY PAGE

HOLE NO. 88-1 PAGE NO. 2

DRILLING COMPANY		COLLAR ELEVATION	BEARING OF HOLE FROM TRUE NORTH	TOTAL FOOTAGE	DIP OF HOLE AT collar	LOCATION OF HOLE IN RELATION TO A FIXED POINT ON THE CLAIM	MAP REFERENCE NO.	CLAIM NO.	
DATE HOLE STARTED	DATE COMPLETED	DATE LOGGED	LOGGED BY		ft		LOCATION (Tp., Lot, Con. OR Lot. and Long.)		
EXPLORATION CO., OWNER OR OPTIONEE		DATE SUBMITTED	SUBMITTED BY (Signature)		ft		PROPERTY NAME		
					ft				

FOOTAGE FROM TO		ROCK TYPE	DESCRIPTION Colour, grain size, texture, minerals, alteration, etc.	PLANAR FEATURE ANGLE *	CORE SPECIMEN FOOTAGE +	YOUR SAMPLE NUMBER	SAMPLE FOOTAGE FROM TO		SAMPLE LENGTH	ASSAYS +	
			around the fractures. At top (up hole) of unit, bedding (?) appears to be oriented at 20° to C.A. Although locally developed (1cm scale) highly fractured and buff colored domains may contain as much as 3-4% very fine grained pyrite, usually only trace cubic pyrite is present.								
			92'00" - 94'00" : Light grey, cherty, interflow sediment with intercalated horizons of pyritic mafic buff. Where the chert is fractured, it may contain be buff, yellow, salmon or white colored due to development of varicolored alteration halos. Medium to fine grained pyrite comprises 1-2% of the rock and occurs in the fractured chert								

* For features such as foliation, bedding, schistosity, measured from the long axis of the core.

+ Additional credit available. See Assessment Work Regulations.



THE MINING ACT - MINISTRY OF NATURAL RESOURCES
DIAMOND DRILLING LOG

Start a new page for every new hole, but fill in top portion of form only on first page for each hole.

FILL IN ON EVERY PAGE

HOLE NO. 88-1 PAGE NO. 3

DRILLING COMPANY		COLLAR ELEVATION	BEARING OF HOLE FROM TRUE NORTH	TOTAL FOOTAGE	DIP OF HOLE AT collar	LOCATION OF HOLE IN RELATION TO A FIXED POINT ON THE CLAIM	MAP REFERENCE NO.	CLAIM NO.	
DATE HOLE STARTED	DATE COMPLETED	DATE LOGGED	LOGGED BY		ft		LOCATION (Tp., Lot, Con. OR Lot. and Long.)		
EXPLORATION CO., OWNER OR OPTIONEE		DATE SUBMITTED	SUBMITTED BY (Signature)		ft		PROPERTY NAME		
					ft				

FOOTAGE FROM TO		ROCK TYPE	DESCRIPTION Colour, grain size, texture, minerals, alteration, etc.	PLANAR FEATURE ANGLE *	CORE SPECIMEN FOOTAGE †	YOUR SAMPLE NUMBER	SAMPLE FOOTAGE FROM TO		SAMPLE LENGTH	ASSAYS †		
			as disseminations (1mm sized cubes) and as fine grained hairline fracture-controlled stringers, and in crosscutting 1mm scale white quartz-calcite veins. Mafic tuff horizons are dark grey, medium grained, with sub- to euhedral hornblende and biotite (?) phenocrysts and carry considerable (locally to 50%) 2-3mm pyrite clots.									
			94'00" - 97'05": Creamy white, massive chert. Where fractured locally, lighter alteration halos around the fractures are present.									
			97'05" - 101'05": Light grey aphanitic tuff with occasional angular white feldspar phenocrysts.									

* For features such as foliation, bedding, schistosity, measured from the long axis of the core.

† Additional credit available. See Assessment Work Regulations.



Start a new page for every new hole, but fill in top portion of form only on first page for each hole.

FILL IN ON EVERY PAGE

HOLE NO. 88-1 PAGE NO. 4

DRILLING COMPANY		COLLAR ELEVATION	BEARING OF HOLE FROM TRUE NORTH	TOTAL FOOTAGE	DIP OF HOLE AT collar	LOCATION OF HOLE IN RELATION TO A FIXED POINT ON THE CLAIM	MAP REFERENCE NO.	CLAIM NO.	
DATE HOLE STARTED	DATE COMPLETED	DATE LOGGED	LOGGED BY		ft		LOCATION (Tp., Lot, Con. OR Lat. and Long.)		
EXPLORATION CO., OWNER OR OPTIONEE		DATE SUBMITTED	SUBMITTED BY (Signature)		ft		PROPERTY NAME		
					ft				

FOOTAGE FROM	TO	ROCK TYPE	DESCRIPTION Colour, grain size, texture, minerals, alteration, etc.	PLANAR FEATURE ANGLE	CORE SPECIMEN FOOTAGE +	YOUR SAMPLE NUMBER	SAMPLE FOOTAGE		SAMPLE LENGTH	ASSAYS +		
							FROM	TO				
			101'05" - 104'00": Medium grey colored, fine grained, feldspathic wacke with a chaotic uphole section which is pyritic and a uniform (homogeneous), massive downhole section.									
			[TOPS UP HOLE]									
104'00"	109'02"	Mafic Crystalline Tuff	Light grey, weakly magnetic tuff with subhedral 1-3mm sized hornblende and biotite phenocrysts. Massive, with sharp but irregular uphole and downhole contacts									
109'02"	114'03"	Interflow Sediment and Tuff	Mottled grey aphanitic to fine grained white feldspar phytic tuff (up hole) and a chaotic assemblage of white chert/dark grey argillite (downhole) which may contain locally 5-7% of blebby pyrite in the downhole section									
			[TOPS UP HOLE]									

* For features such as foliation, bedding, schistosity, measured from the long axis of the core.

+ Additional credit available. See Assessment Work Regulations.



Start a new page for every new hole, but fill in top portion of form only on first page for each hole.

FILL IN ON EVERY PAGE

HOLE NO. 88-1 PAGE NO. 5

DRILLING COMPANY		COLLAR ELEVATION	BEARING OF HOLE FROM TRUE NORTH	TOTAL FOOTAGE	DIP OF HOLE AT collar	LOCATION OF HOLE IN RELATION TO A FIXED POINT ON THE CLAIM	MAP REFERENCE NO.	CLAIM NO.	
DATE HOLE STARTED	DATE COMPLETED	DATE LOGGED	LOGGED BY		ft		LOCATION (Tp., Lot, Con. OR Lat. and Long.)		
EXPLORATION CO., OWNER OR OPTIONEE		DATE SUBMITTED	SUBMITTED BY (Signature)		ft		PROPERTY NAME		
					ft				

FOOTAGE FROM	TO	ROCK TYPE	DESCRIPTION Colour, grain size, texture, minerals, alteration, etc.	PLANAR FEATURE ANGLE *	CORE SPECIMEN FOOTAGE †	YOUR SAMPLE NUMBER	SAMPLE FOOTAGE		SAMPLE LENGTH	ASSAYS †	
							FROM	TO			
114'03"	128'09"	Fe. Tholeiitic Basalt	Dark grey, aphanitic to fine grained, magnetic basalt. Up-hole part of section is amygdaloidal and brecciated, grading down-hole into a fine grained homogeneous basalt. Except in the uppermost part of this section, where pyrite may constitute locally 2-3% as amygdale fillings, only trace disseminated pyrite is present. Hairline fractures of calcite-epidote-pyrite may crosscut the core at various angles to the C.A. [TOPS UP HOLE].								
178'09"		EOH									

* For features such as foliation, bedding, schistosity, measured from the long axis of the core.

† Additional credit available. See Assessment Work Regulations.



DRILLING COMPANY GELINAS		COLLAR ELEVATION	BEARING OF HOLE FROM TRUE NORTH 345	TOTAL FOOTAGE 178'09"	DIP OF HOLE AT COLLAR 52°	LOCATION OF HOLE IN RELATION TO A FIXED POINT ON THE CLAIM the hole collar is located 40 feet west of an 320 feet south of the No. 1 post of claim 43454	MAP REFERENCE NO. HISLOP	CLAIM NO. 43454	
DATE HOLE STARTED May 7, 1988	DATE COMPLETED	DATE LOGGED May 13, 1988	LOGGED BY A.C. BATH (MNDM)		ft		LOCATION (Tp., Lot, Con. OR Lat. and Long.) SW 1/4, S 1/2, lot 8, con II, HISLOP		
EXPLORATION CO., OWNER OR OPTIONEE GELINAS		DATE SUBMITTED May 13, 1988	SUBMITTED BY (Signature) L. GELINAS		ft		PROPERTY NAME GELINAS		
					ft				

FOOTAGE		ROCK TYPE	DESCRIPTION Colour, grain size, texture, minerals, alteration, etc.	PLANAR FEATURE ANGLE *	CORE SPECIMEN FOOTAGE +	YOUR SAMPLE NUMBER	SAMPLE FOOTAGE		SAMPLE LENGTH	ASSAYS +	
FROM	TO						FROM	TO			
0	87'03"	Fe tholeiitic Basalt	Olive to forest green, aphanitic to fine grained, magnetic basalt. Massive, with disseminated, less than 1mm sized cubes and irregular blebs of pyrite and, rarely, pyrrhotite which in aggregate comprise less than 1% of the rock. Occasional 1-3mm wide stringers and veinlets of white quartz-calcite-epidote-hematite-cubic pyrite cross the core at various angles to the C.A. 50'09"-52'03": Pervasive epidote alteration is cut by epidote-filled fractures.								
87'03"	104'00"	Interflow Sediments	Charcoal grey to dirty grey colored, microcrystalline to very fine grained, non magnetic to weakly magnetic and generally lacking sedimentary features. Variably trifluorous and/or cherty. 87'03"-92'00": Dark grey, cherty, nonmagnetic. Where fractured, light grey to buff colored alteration halos are developed								

* For features such as foliation, bedding, schistosity, measured from the long axis of the core.

+ Additional credit available. See Assessment Work Regulations.



Ontario

THE MINING ACT - MINISTRY OF NATURAL RESOURCES
DIAMOND DRILLING LOG

Start a new page for every new hole, but fill in top portion of form only on first page for each hole.

FILL IN ON EVERY PAGE

HOLE NO. 88-1 PAGE NO. 2

DRILLING COMPANY		COLLAR ELEVATION	BEARING OF HOLE FROM TRUE NORTH	TOTAL FOOTAGE	DIP OF HOLE AT collar	LOCATION OF HOLE IN RELATION TO A FIXED POINT ON THE CLAIM	MAP REFERENCE NO.	CLAIM NO.
DATE HOLE STARTED	DATE COMPLETED	DATE LOGGED	LOGGED BY		ft		LOCATION (Tp., Lot, Con. OR Lat. and Long.)	PROPERTY NAME
EXPLORATION CO., OWNER OR OPTIONEE		DATE SUBMITTED	SUBMITTED BY (Signature)		ft			
					ft			

FOOTAGE FROM TO		ROCK TYPE	DESCRIPTION Colour, grain size, texture, minerals, alteration, etc.	PLANAR FEATURE ANGLE	CORE SPECIMEN FOOTAGE +	YOUR SAMPLE NUMBER	SAMPLE FOOTAGE FROM TO		SAMPLE LENGTH	ASSAYS +	
			around the fractures. At top (up hole) of unit, bedding (?) appears to be oriented at 20° to C.A. Although locally developed (1cm scale) highly fractured and buff colored domains may contain as much as 3-4% very fine grained pyrite, usually only trace cubic pyrite is present.								
			9200" - 9400" : Light grey, cherty, interflow sediment with intercalated horizons of pyritic mafic buff. Where the chert is fractured, it may contain be buff, yellow, salmon or white colored due to development of varicolored alteration halos. Medium to fine grained pyrite comprises 1-2% of the rock and occurs in the fractured chert								

* For features such as foliation, bedding, schistosity, measured from the long axis of the core.

+ Additional credit available. See Assessment Work Regulations.



Ontario

THE MINING ACT - MINISTRY OF NATURAL RESOURCES
DIAMOND DRILLING LOG

Start a new page for every new hole, but fill in top portion of form only on first page for each hole.

FILL IN ON EVERY PAGE

HOLE NO. 88-1 PAGE NO. 3

DRILLING COMPANY		COLLAR ELEVATION	BEARING OF HOLE FROM TRUE NORTH	TOTAL FOOTAGE	DIP OF HOLE AT collar	LOCATION OF HOLE IN RELATION TO A FIXED POINT ON THE CLAIM	MAP REFERENCE NO.	CLAIM NO.		
DATE HOLE STARTED	DATE COMPLETED	DATE LOGGED	LOGGED BY		ft		LOCATION (Tp., Lot, Con. OR Lat. and Long.)			
EXPLORATION CO., OWNER OR OPTIONEE		DATE SUBMITTED	SUBMITTED BY (Signature)		ft			PROPERTY NAME		
					ft					

FOOTAGE FROM TO		ROCK TYPE	DESCRIPTION Colour, grain size, texture, minerals, alteration, etc.	PLANAR FEATURE ANGLE *	CORE SPECIMEN FOOTAGE +	YOUR SAMPLE NUMBER	SAMPLE FOOTAGE FROM TO		SAMPLE LENGTH	ASSAYS +		
			as disseminations (1mm sized cubes) and a fine grained hairline fracture-controlled stringers, and in crosscutting 1mm scale white quartz-calcite veins. Mafic tuff horizons are dark grey, medium grained, with sub- to euhedral hornblende and biotite (?) phenocrysts and carry considerable (locally to 50%) 2-3mm pyrite clots.									
			94'00" - 97'05": Creamy white, massive chert. Where fractured locally, lighter alteration halos around the fractures are present.									
			97'05" - 101'05": Light grey aphanitic tuff with occasional angular white feldspar phenocrysts.									

* For features such as foliation, bedding, schistosity, measured from the long axis of the core.

+ Additional credit available. See Assessment Work Regulations.



Ontario

THE MINING ACT - MINISTRY OF NATURAL RESOURCES
DIAMOND DRILLING LOG

Start a new page for every new hole, but fill in top portion of form only on first page for each hole.

FILL IN ON EVERY PAGE

HOLE NO. 88-1 PAGE NO. 4

DRILLING COMPANY		COLLAR ELEVATION	BEARING OF HOLE FROM TRUE NORTH	TOTAL FOOTAGE	DIP OF HOLE AT collar	LOCATION OF HOLE IN RELATION TO A FIXED POINT ON THE CLAIM	MAP REFERENCE NO.	CLAIM NO.	
DATE HOLE STARTED	DATE COMPLETED	DATE LOGGED	LOGGED BY		ft		LOCATION (Tp., Lot, Con. OR Lat. and Long.)		
EXPLORATION CO., OWNER OR OPTIONEE		DATE SUBMITTED	SUBMITTED BY (Signature)		ft		PROPERTY NAME		
					ft				

FOOTAGE FROM TO		ROCK TYPE	DESCRIPTION Colour, grain size, texture, minerals, alteration, etc.	PLANAR FEATURE ANGLE *	CORE SPECIMEN FOOTAGE +	YOUR SAMPLE NUMBER	SAMPLE FOOTAGE FROM TO		SAMPLE LENGTH	ASSAYS +	
			101'05" - 104'00": Medium grey colored, fine grained, feldspathic wacke with a chaotic uphole section which is pyritic and a uniform (homogeneous), massive downhole section.								
			[TOPS UP HOLE]								
104'00"	109'02"	Mafic Crystalline Tuff	Light grey, weakly magnetic tuff with euhedral 1-3mm sized hornblende and biotite phenocrysts. Massive, with sharp but irregular uphole and downhole contacts								
109'02"	114'03"	Interflow Sediment and Tuff	Mottled grey aphanitic to fine grained white feldspar phytic tuff (up hole) and a chaotic assemblage of white chert/dark grey argillite (downhole) which may contain locally 5-7% of blebby pyrite in the downhole section								
			[TOPS UP HOLE]								

* For features such as foliation, bedding, schistosity, measured from the long axis of the core.

+ Additional credit available. See Assessment Work Regulations.



Ontario

THE MINING ACT - MINISTRY OF NATURAL RESOURCES
DIAMOND DRILLING LOG

Start a new page for every new hole, but fill in top portion of form only on first page for each hole.

FILL IN ON EVERY PAGE

HOLE NO. 88-1 PAGE NO. 5

DRILLING COMPANY		COLLAR ELEVATION	BEARING OF HOLE FROM TRUE NORTH	TOTAL FOOTAGE	DIP OF HOLE AT collar	LOCATION OF HOLE IN RELATION TO A FIXED POINT ON THE CLAIM	MAP REFERENCE NO.	CLAIM NO.	
DATE HOLE STARTED	DATE COMPLETED	DATE LOGGED	LOGGED BY		ft		LOCATION (Tp., Lot, Con. OR Lat. and Long.)		
EXPLORATION CO., OWNER OR OPTIONEE		DATE SUBMITTED	SUBMITTED BY (Signature)		ft		PROPERTY NAME		
					ft				

FOOTAGE FROM TO		ROCK TYPE	DESCRIPTION Colour, grain size, texture, minerals, alteration, etc.	PLANAR FEATURE ANGLE *	CORE SPECIMEN FOOTAGE +	YOUR SAMPLE NUMBER	SAMPLE FOOTAGE FROM TO		SAMPLE LENGTH	ASSAYS +	
114'03"	178'09"	Fe. Tholeiitic Basalt	Dark grey, aphanitic to fine grained, magnetic basalt. Up hole part of section is amygdaloidal and brecciated, grading down hole into a fine grained homogeneous basalt. Except in the uppermost part of this section, where pyrite may constitute locally 2-3% as amygdale fillings, only trace disseminated pyrite is present. Hairline fractures of white-epidote-pyrite may crosscut the core at various angles to the C.A. [TOPS UP HOLE].								
178'09"	EOH										

* For features such as foliation, bedding, schistosity, measured from the long axis of the core.

+ Additional credit available. See Assessment Work Regulations.

MIN-EN LABORATORIES LTD.

Specialists in Mineral Environments

705 West 15th Street North Vancouver, B.C. Canada V7M 1T2

PHONE: (604)980-5814 OR (604)988-4524

TELEX: VIA USA 7601067 UC

Analytical Report

Company: A. GELINAS
Project:
Attention: A. GELINAS

File: 82-807
Date: JUNE 3/88
Type: ROCK GEOCHEM

Date Samples Received : MAY 31/88
Samples Submitted by : A. GELINAS

Report on 3 ROCKS..... Geochem Samples
..... Assay Samples

Copies sent to:

1. A. GELINAS, TIMMINS, ONT.
2. A. GELINAS, C/O JOHN LAITIN, TIMMINS, ONT.
- 3.

Samples: Sieved to mesh Ground to mesh-100.....

Prepared samples stored:.....X..... discarded:.....
rejects stored:.....X..... discarded:.....

Methods of analysis:

AU-FIRE GEOCHEM

Remarks

MIN-EN LABORATORIES LTD.

Specialists in Mineral Environments

705 West 15th Street North Vancouver, B.C. Canada V7M 1T2

PHONE: (604) 980-5814 OR (604) 938-4524

TELEX: VIA USA 7601067 UC

Certificate of GEOCHEM

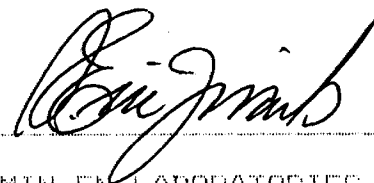
Company: A. GELINAS
Project:
Attention: A. GELINAS

File: 82-807/P1
Date: JUNE 3/88
Type: ROCK GEOCHEM

We hereby certify the following results for samples submitted.

Sample Number	AU-FIRE PPB
01	6
02	3
03	4

Certified by



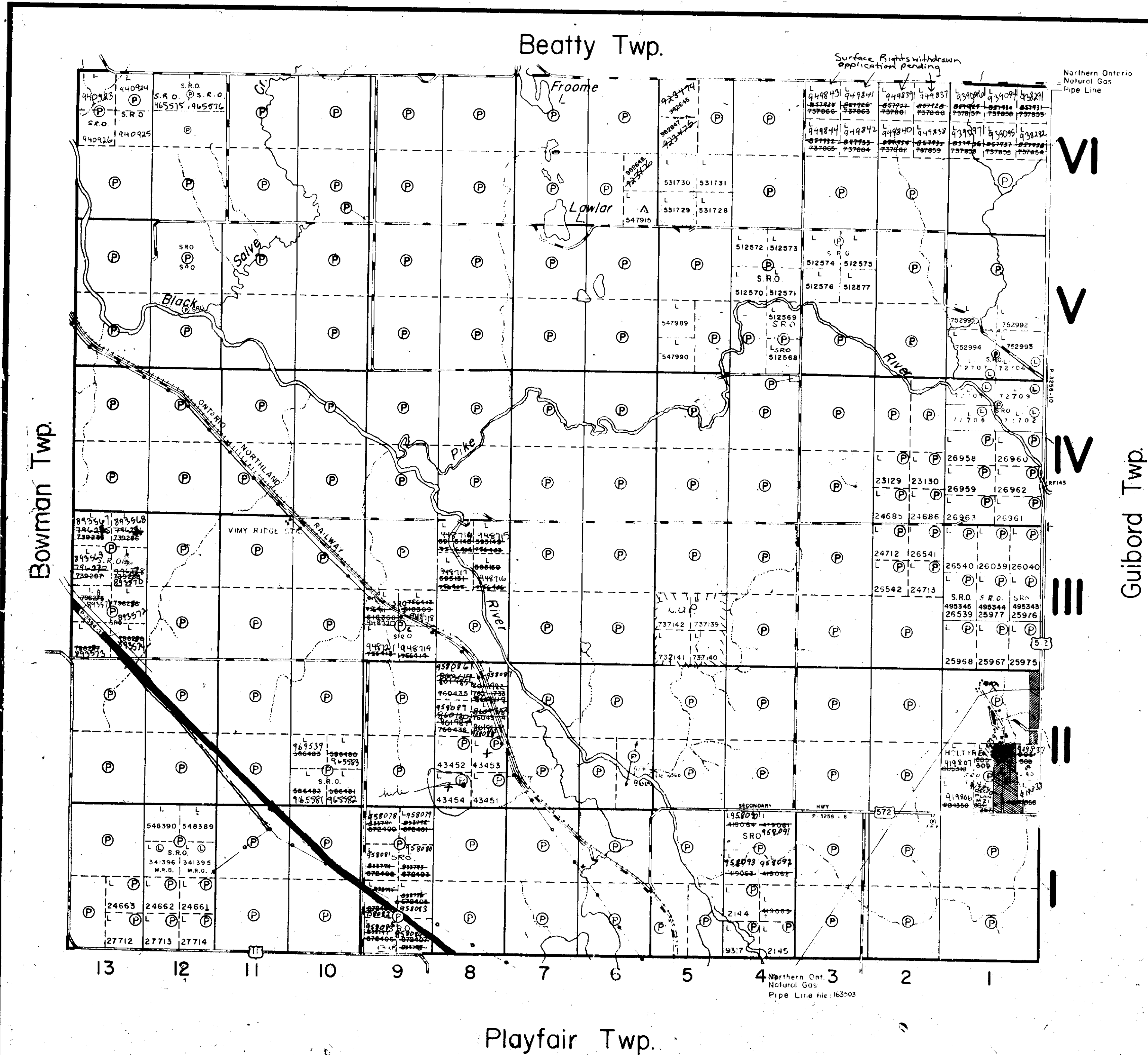
MIN-EN LABORATORIES LTD.

W. 322

H12G0B LWT

W. 322

OM87-6-I-356 63.5465



THE TOWNSHIP
OF
HISLOP
DISTRICT OF
COCHRANE
LARDER LAKE
MINING DIVISION
SCALE: 1-INCH= 40 CHAINS

LEGEND

PATENTED LAND	⊙ or ⊚
CROWN LAND SALE	⊙ or ⊚
LEASES	⊙ or ⊚
LOCATED LAND	⊙ or ⊚
LICENSE OF OCCUPATION	⊙ or ⊚
MINING RIGHTS ONLY	⊙ or ⊚
SURFACE RIGHTS ONLY	⊙ or ⊚
ROADS	—
IMPROVED ROADS	—
KING'S HIGHWAYS	—
RAILWAYS	—
POWER LINES	—
MARSH OR MUSKEG	—
MINES	—
GEODECTIC STATION	—

NOTES

Holtvre Townsite Shown Thus: [Symbol]

Gravel Reserve Shown Thus: [Symbol]

400' Surface rights reservation around all lakes and rivers

42A 08/09

DATE OF ISSUE
MAR 11 1998
LARDER LAKE
MINING DIVISION'S OFFICE
#12

PLAN NO.- M-355

ONTARIO
MINISTRY OF NATURAL RESOURCES
SURVEYS AND MAPPING BRANCH



Ref. map 13/18/09