



42A08NW0220 13 PLAYFAIR

010

Diamond Drilling

Township of PLAYFAIR

Report NO: 13

Work performed by: Fin Resources Incorporated

Claim NO	Hole NO	Footage	Date	Note
L 346406	F76-1	797.0'	Feb/76	(1)
L 346409	F76-2	606.0'	Feb/76	(1)

Notes:

(1) #89-76







PROPERTY: <i>Fin Resources Inc.</i>			HOLE NO. <i>F76-2</i>	
DIP:	STARTED:	COMPLETED:	Sheet 2 of 3	
H.D.	DRILLED BY:		DEPTH:	
			LOGGED BY:	

	SAMPLE FOOTAGES	SAMPLE No.	WIDTH FT.	ASSAY DATA					
				Oz. Au	Oz. Ag	% Zn			
<i>red csc gr - dark matrix</i>									
<i>tr mineral</i>	<i>248 - 250.6</i>	<i>3528</i>	<i>2.5</i>	<i>NIL</i>					
<i>strongly epidotized</i>									
<i>looking garnet</i>	<i>262.6 - 264</i>	<i>3529</i>	<i>1.4</i>	<i>NIL</i>	<i>NIL</i>	<i>Tr</i>			
<i>scattered in barren rock no PHS</i>									
<i>massive f.gr. fewer sph?? patches</i>									
<i>patches more scattered &amp; smaller</i>									
	<i>339.9 - 340.7</i>	<i>3530</i>	<i>0.8</i>	<i>NIL</i>	<i>NIL</i>	<i>Tr</i>			
<i>above plus minor Qtz veins</i>	<i>357.4 - 360.5</i>	<i>3531</i>	<i>3.1</i>	<i>NIL</i>	<i>NIL</i>	<i>Tr</i>			
<i>Ande... more interbed material</i>									
<i>1/2" at Fel pot.</i>									
<i>sph?? - epidote</i>	<i>388.5 - 389.7</i>	<i>3532</i>	<i>1.2</i>	<i>NIL</i>	<i>NIL</i>	<i>.01</i>			
<i>3" - 3" - felspar porphyry</i>									
<i>Qtz... at contact + sph??</i>	<i>398.5 - 400</i>	<i>3533</i>	<i>1.5</i>	<i>NIL</i>	<i>NIL</i>	<i>Tr</i>			
<i>400 - 412.2 - felspar porphyry</i>									
<i>Ande... well epidotized</i>									
<i>404.7 - 406.3 - Bull. Vein</i>	<i>404.7 - 406.3</i>	<i>3534</i>	<i>1.6</i>	<i>NIL</i>					
<i>Ande... sph?) + py + magnetite</i>	<i>415 - 417.3</i>	<i>3535</i>	<i>2.3</i>	<i>NIL</i>	<i>NIL</i>	<i>0.01</i>			
<i>epidote</i>									
<i>felspar porphyry</i>									
<i>at 40°</i>	<i>443.8 - 445.1</i>	<i>3536</i>	<i>1.3</i>	<i>.005</i>					

PROPERTY: *Fin Resources Inc.*

HOLE NO. *F 76-2*  
Sheet 3 of 3

LATITUDE :	BEARING:	DIP:	STARTED:	COMPLETED:	DEPTH:
DEPARTURE:	V.D.	H.D.	DRILLED BY:		LOGGED BY:
ELEVATION:	LOCATION:				

FOOTAGE	SAMPLE FOOTAGES	SAMPLE No.	WIDTH FT.	ASSAY DATA		
				Gr Au	Gr Ag	% Zn
457.3 - 459.2						
492						
543						
555.5						
567						
585.3						
597.7						
600.5						
601.5						
606						

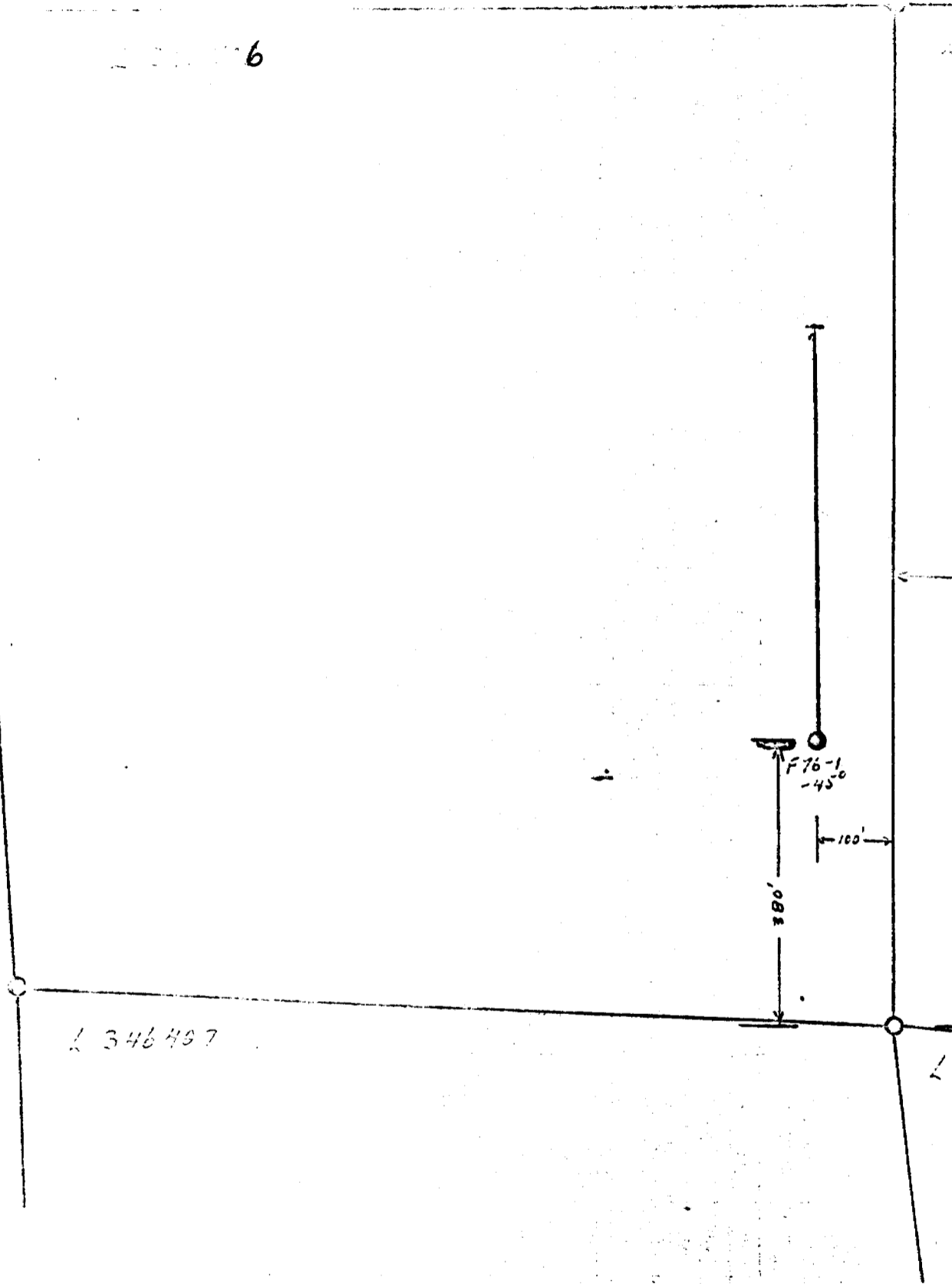
END OF HOLE

A waxy light brown mineral, intimately associated with epidote in irregular patches was believed to be a garnet, but might have been sphalerite so it was frequently assayed for zinc. The mineral was garnet as the assays confirmed.



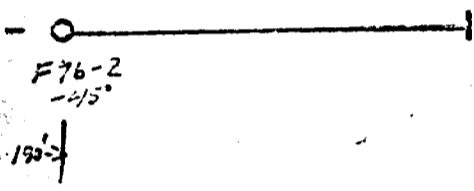
*H. G. Harper*

2226



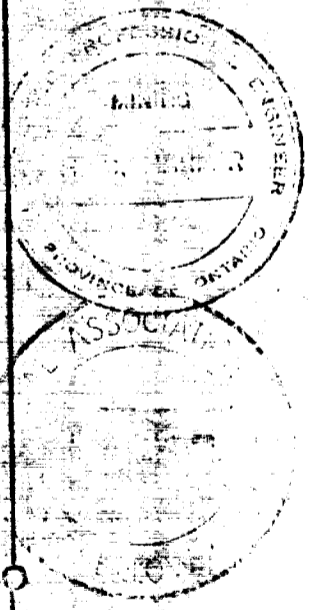
L 346497

16 407



346409

16 408



1" = 200'

*Handwritten signature*