

DIAMOND DRILLING



42A08SE0198 17 MAISONVILLE

010

TOWNSHIP: Maisonville

REPORT No.: 17

WORK PERFORMED BY: Goliath Mines Ltd. (Don McKinnon)

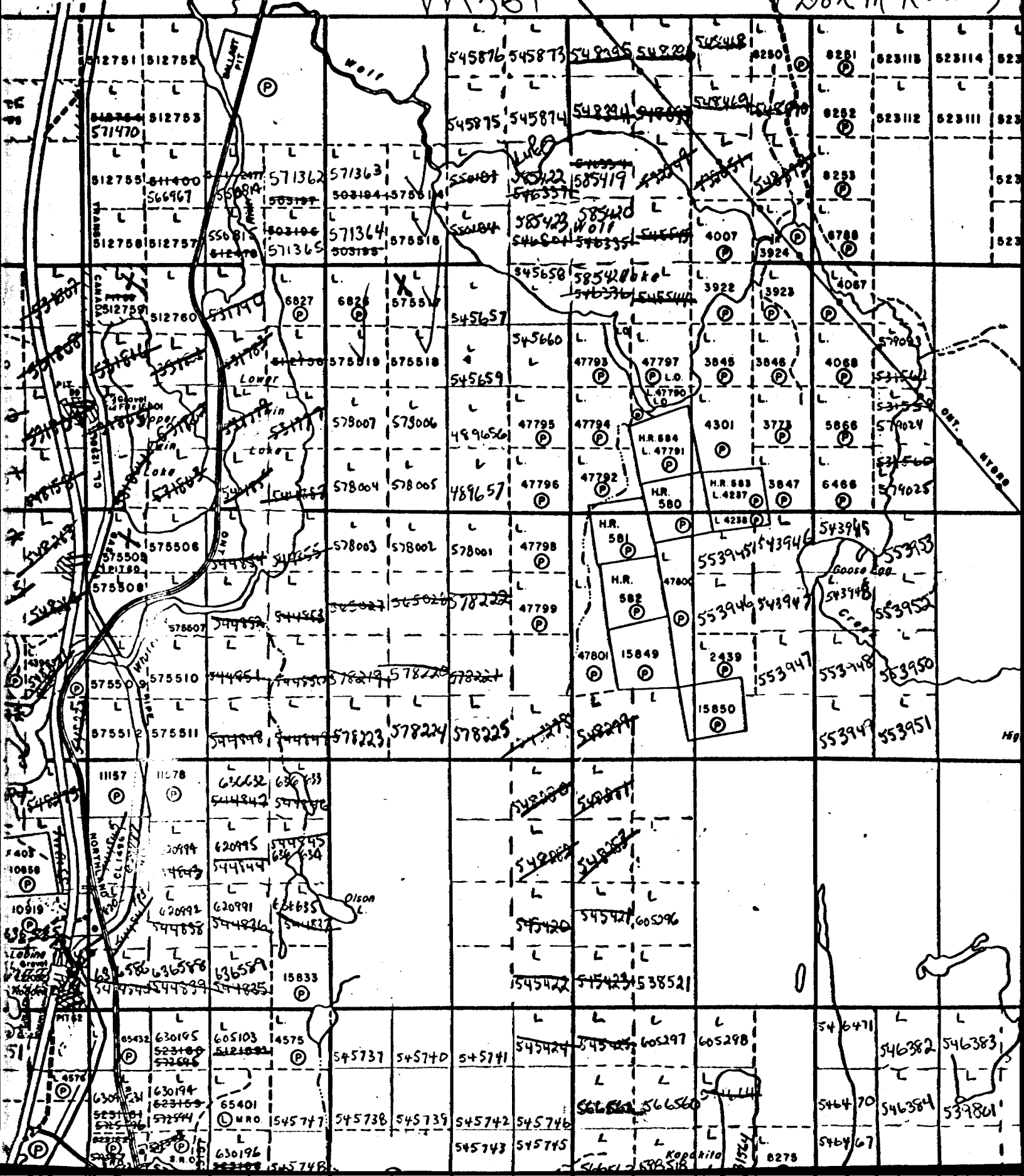
<u>CLAIM No.</u>	<u>HOLE No.</u>	<u>FOOTAGE</u>	<u>DATE</u>	<u>NOTE</u>
L 575517	G 4	458.0	Feb/81	(1)
L 512759	G 5	432.0	Feb/81	(2)
L 575507	G 6	404.0	Feb/81	(3)

NOTES: (1) #25-82
 (2) #26-82
 (3) #27-82

BENOIT TWP. - M.326

Maisonville Twp
M361

25-82
(Don McKinnon)



DIAMOND DRILL RECORD

PROPERTY GOLIATH MINES LTD HOLE NO. 94

TOWNSHIP MAISONVILLE TWP ONT PAGE NO. -1-

LOCATION 4+50E
LINE 485 (GEOPH GRID)
CLAIM 575517

CORE LOCATION BUTLER LAKE RESTAURANT STARTED FEBRUARY 11-1981
 DATUM _____ COMPLETED FEBRUARY 13-1981
 BEARING 270° (AST) DEPTH 458'
 DIP 55°

ELEVATION _____

DEPTH FEET	FORMATION	SAMPLE NO.	WIDTH OF SAMPLE	Au/oz		
0 - 26	Casing (overburden).					
26 - 458	Intermediate Volcanic Flow: light green, v. f. gr., massive except for highly fractured with qtz-filling & epidote seams.					
41.0-42.5	2% py in brown carb adj. to 1" qtz str. @ 30°	4-1	1.5			
53	1" carb & hematite @ 20° - fault					
83-84.6	3% py in brown carb adj. to 2" qtz @ 50°	4-2	1.6			
107.4-113	flow breccia					
127.2-129.5	3% py in brown carb adj. to qtz seams	4-3	2.3			
136-138.1	1" & 3" qtz stss. @ 45°, 1% py in wlrk	4-4	2.1			
140-161	epidote alteration results in med. gr. texture					
174-176	py in brown carb adj. to ½" qtz str.	4-5	2.0			
182-192	flow breccia representing selvages of pillows up to 2'					
232	2" brown carb + py @ 45°					

Drilled By _____

Signed _____

SHIELD GEOPHYSICS LIMITED

DIAMOND DRILL RECORD

PROPERTY.....
 TOWNSHIP.....

HOLE NO. G4
 PAGE NO. 2

LOCATION..... CORE LOCATION..... STARTED.....
 DATUM..... COMPLETED.....
 BEARING..... DEPTH.....
 ELEVATION..... DIP.....

DEPTH FEET	FORMATION	SAMPLE NO.	WIDTH OF SAMPLE	Au/oz			
238.0-239.8	3" brown carb + py & qtz	4-6	0.8				
250-251.1	3" qtz str. @ 70° with py in adj. brown carb	4-7	1.1				
254-271.5	med. gr. texture after epidote						
260-261.2	1" qtz str. @ 70° with py in adj. brown carbonate	4-8	1.2				
289-290	5" brown carb with diss. py, ½" qtz strs.	4-9	1.0				
314	2" qtz str. @ 45°						
323	2" qtz str. @ 60°						
330-335.5	5" brown carb with diss. py, ½" & 1" qtz str. with adj. py in brown carb	4-10	5.5				
351-352	6" banded qtz-carb @ 70° + py in wlrk	4-11	1.0				
357.2	1" qtz str.						
366.5-366.6	6" diss. py in brown carb adj. to 1" & ½" qtz str.	4-12	1.1				
374.2-377.2	35% qtz-carb str. mostly @ 45°, 2% pyrite	4-13	3.0				

Drilled By.....

Signed.....

SHIELD GEOPHYSICS LIMITED

DIAMOND DRILL RECORD

PROPERTY..... HOLE NO. G4
 TOWNSHIP..... PAGE NO. 3

LOCATION..... CORE LOCATION..... STARTED.....
 DATUM..... COMPLETED.....
 BEARING..... DEPTH.....
 ELEVATION..... DIP.....

DEPTH FEET	FORMATION	SAMPLE NO.	WIDTH OF SAMPLE	Au/oz		
386.0	1" qtz str. @ 60°					
404-405	3" qtz str. @ 80°, sli. py with qtz-chlorite filled fracture	4-14	1.0			
421-432.5	highly epidotized giving light green colour					
428-432	½" & 1" qtz str. @ 45° in few inches of py-bearing brown carbonate	4-20	4.0			
432.5-440	med. green, v. f. gr. amygdaloidal					
436-437.8	4" qtz-carb @ 40°, some py wrk	4-21	1.8			
451.2-452.4	7" qtz v. @ 45°, 2% py in wrk	4-15	1.2			
455.4-458.0	2-1" qtz str. in bleached wrk with 2% pyrite	4-16	2.6			
458-506	epidotized, v. f. gr., some amygdaloids, many qtz filled fractures					
506	END.					
Note: Sample numbers 4-17 to 4-19 incl. not used						

Drilled By.....

Signed [Signature]
 SHIELD GEOPHYSICS LIMITED

DIAMOND DRILL RECORD

PROPERTY GOLIATH MINES LIMITED HOLE NO. G5
 TOWNSHIP Benoit Township PAGE NO. 1

LOCATION LINE 52 S CORE LOCATION Butler Lake restaurant STARTED February 16, 1981
5 + 50 W DATUM NA COMPLETED February 19, 1981
CLAIM 512759 BEARING 270° (Ast) DEPTH 432'
 ELEVATION _____ DIP 55° _____ 13.0

DEPTH FEET	FORMATION	SAMPLE NO.	WIDTH OF SAMPLE	Au/oz			
0 - 52	Casing (overburden).						
52 - 432	Cobalt Sediments: pink arkose with chert fragments up to 1"; grey blue, v. f. gr. greywacke with occ. pink arkosic fragments, bedding @ about 45° to c.a.						
52.0-53.5	pink arkose						
53.5-93.0	greywacke						
93.0-105.0	pale pink arkose						
86.2	seam of cpy @ 45°						
111-111.7	2" pink qtz-porphyry with 5% diss. pyrite	5-1	0.7				
125.7	1" fragment of qtz porphyry with diss. cpy						
134-135	pink arkose						
148-153	pink arkose						
156.5-161.5	pink arkose						
170-173	pink arkose						
177.7-180.7	pink arkose						
192-195	pink arkose						

Drilled By Morissette

Signed [Signature]

SHIELD GEOPHYSICS LIMITED

DIAMOND DRILL RECORD

PROPERTY..... HOLE NO. G5

TOWNSHIP..... PAGE NO. 2

LOCATION..... CORE LOCATION..... STARTED.....

..... DATUM..... COMPLETED.....

..... BEARING..... DEPTH.....

ELEVATION..... DIP.....

DEPTH FEET	FORMATION	SAMPLE NO.	WIDTH OF SAMPLE	Au/oz			
196.0	3" vuggy arkosic sections with fine cubic pyrite						
196.0-200.0	fractured // to c.a.						
207-211	pink arkose						
215-217.5	pink arkose bedding @ 45° to c.a.						
233-235	pink arkose						
243-245	pink arkose at upper contact arkosic fragments in greywacke						
252-256.5	pink arkose						
266.4-268.4	pink arkose						
291-293	pink arkose						
303-304	pink arkose - vuggy						
313.2-314.7	typical section of pink arkose, arkose fragments at upper contact over 6" & sharp 45° lower contact indicates tops up hole & water action caused development of arkosic fragments						
323	1" qtz-porphyry pebble						

Drilled By.....

Signed.....

SHIELD GEOPHYSICS LIMITED

DIAMOND DRILL RECORD

PROPERTY GOLIATH MINES LTD. HOLE NO. G6

TOWNSHIP Benoit Township BUTLER LAKE REST. PAGE NO. 1

LOCATION 0+50 E

CORE LOCATION.....

STARTED FEB 20-1981

0 LINE 136 S

DATUM.....

COMPLETED FEB 23-1981

CLAIM 57 S 50 7

BEARING 270° (AST)

DEPTH 404'

ELEVATION.....

DIP 55°

30

DEPTH FEET	FORMATION	SAMPLE NO.	WIDTH OF SAMPLE				
0 - 4	Casing (overburden).						
4 - 256	Diabase?: black, fine to medium grained, medium porphyritic texture, many epidote zones and stringers @ various angles, hard, sil. py.						
30.0-61.0	fine to v. f. gr. with some magnetite seams, pink granitic str. otherwise similar to above						
31.0-34.0	2-½" str. @ 70 & 45° with heavy py in buff carb as immed. wrk for 1"	6-1	3.0				
49.0-50.0	1" qtz str. @ 60° with wrk as above	6-2	1.0				
61	fractured @ 40°						
61.0-87.5	crystalline & fine to med. gr., numerous rusty fractures						
69	5" epidote						
71	1.4' dominantly epidote						
79	1" qtz str. & breccia with py @ 50°						
87.5-256	very fine grained						
126.4	2" banded chert-like str. @ 70° with adj. brecciation, hematite & pink feldspar in fractures						

Drilled By Morissette

Signed.....

SHIELD GEOPHYSICS LIMITED

DIAMOND DRILL RECORD

PROPERTY..... HOLE NO. G6
 TOWNSHIP..... PAGE NO. 2

LOCATION..... CORE LOCATION..... STARTED.....
 DATUM..... COMPLETED.....
 BEARING..... DEPTH.....
 ELEVATION..... DIP.....

DEPTH FEET	FORMATION	SAMPLE NO.	WIDTH OF SAMPLE				
126.6-127.6	2" qtz str. @ 70° with heavy py in buff carb wlrk over 3" & 2"	6-3	1.0				
155.7-156.8	mostly epidote						
174	¼" qtz str. with adj. py as above						
177	1" conc. of pyrite						
194	3" epidote & feldspar recrystallization						
202-205	3-1" seams of heavy pyrite @ 80° having ¼" qtz core as above	6-4	3.0				
206-241	numerous ¼" fracture zones with heavy py & qtz cores @ 70°						
256	becoming lighter coloured i.e. with green cast						
256 - 314	Intermediate Volcanic Flow: dark green, v. f. gr massive, few epidote & hematite seams & locally over 4-5" concentrations of amygdaloids.						
305-312	core ground						
314 - 328	Feldspar Porphyry: pink, medium grained, light pink to grey crystals of feldspar up to 1/8" in pink matrix, no apparent qtz.						

Drilled By.....

Signed.....

SHIELD GEOPHYSICS LIMITED

