



42A085W0011 2.10857 BENOIT

010

2.10857

Butler/Eleven Property
57 Claims
in
Benoit and Black Townships

District of Cochrane
Larder Lake Mining Division

February, 1988

RECEIVED

FEB 23 1988

MINING LANDS SECTION

Produced by J. Lourim Associates
Consulting Geologists
Toronto, Ontario

Summary

The property comprises 57 claims in Benoit and Black Townships in a portion of the Kirkland Lake-Larder Lake and Destor-Porcupine gold area (fig. 1.), which is near the 'nose' of the Blake River Synclinorium, mainly on the north limb. It is a few miles south of the presently producing Pamour Porcupine's Ross Mine and southeast of The Canadian Arrow Mine, both of which are in Hislop Township.

The Ross Mine has produced 932,396 oz/Au and over 1.5 million oz/Ag to the end of 1986. The Canadian Arrow Mine produced 17,045 oz/Au between 1980-1983.

The presence of syenitic intrusives in the west central portion suggests a favourable possibility for a 'heat pump' mechanism for gold deposition both in the volcanics and in the intrusive itself.

Many gold deposits are hosted by or associated with felsic intrusives such as the Canadian Arrow, Ross, Macassa, Murphy-Garrison.

Ontario Government R.C. Drillholes have returned a number of anomalous areas of gold mineralization both in geochemical assays of overburden as well as in gold flakes counted on the shaking tables from the north portion of Benoit Township. As well, the presence of eskers here is favourable for the determination of kimberlites as eskers were found to contain kimberlite indicator minerals in other areas surveyed by the Ontario Government. Since diamonds are found in kimberlite bodies, there is a potential for diamonds in the areas, as a result. The occurrence of a diamond in esker material in the nearby Sheraton Township indicates the presence of macroscopic, rather than merely microscopic diamonds.

Several gold properties have returned anomalous gold values from nearby claim groups. For example, Legend Gold Mines property which is southwest of Butler Lake in Black Township had up to 0.94 oz/t in chip samples.

Summary (Cont'd)

An Ontario Government drillhole to the east of the property returned 15,000 ppb's Au in upper sands and 1300 ppb's Au in lower gravels. Also, a maximum of 6 gold flakes in tills was found in one hole and another hole contained 9 gold flakes in the total overburden. Noranda outlined a conductor in the northwest portion and later, Lacana Mines outlined another conductor nearby and confirmed the Noranda conductor. The Noranda conductor was due to graphite but zinc values were also obtained.

Geochemical surveys were conducted in the spring and fall of 1987 on the claim group and a few elevated gold values were obtained.

Gold in humus outlined a few areas with Au potential, including one area which has a gold humus anomaly the length of a claim. Elevated base metals values were also obtained.

As a result of these preliminary findings, history and associations, a program of ground geophysics involving VLF-EM and magnetometer surveys is recommended to delineate magnetic anomalies, geological contacts and conductive zones. This geophysics would be followed by a program of diamond drilling of 10,000 feet. An optional additional phase would consist of a detailed reverse circulation drill program in the southwestern portion of the claim group in the area associated with the eskers.

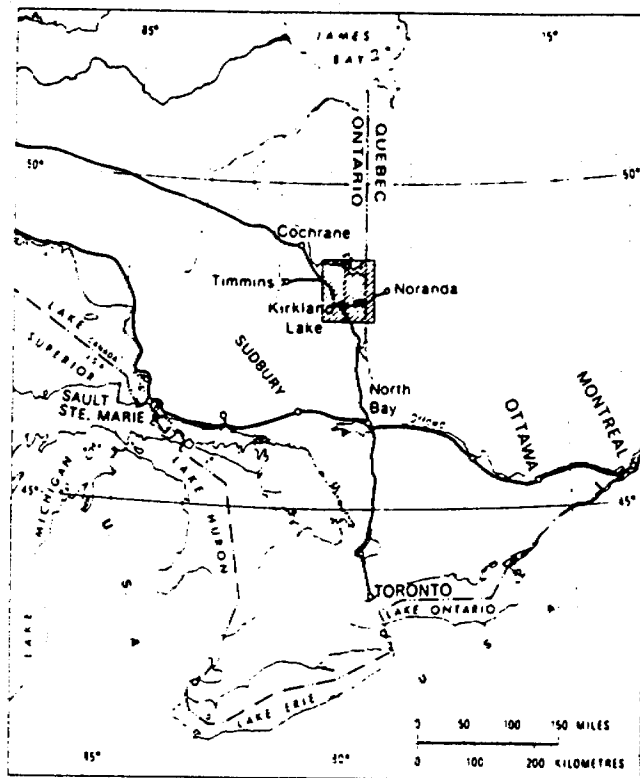


Figure 1. Key map showing location of the Kirkland Lake area.

INDEX MAP
figure 1.



42A085W0011 2.10857 BENOIT

010C

Table of Contents

	<u>Page</u>
Title Page	i
Summary	ii
Index Map (Figure 1.) ...	iv
Table of Contents	v
Introduction	1
Location and Access	3
General Geology	4
Property Geology and History	6
Reverse Circulation Drilling	9
Mines and Deposits with Gold in Felsic Intrusives ...	11
Geochemical Surveys and Results	12
Conclusions/Recommendations	14
References	15
Estimated Budget	18
Optional Budget Estimate	20
Certificate	vi
Figure 2. Property Location and Geology	2
Figure 3. Butler/Eleven Claim Group	5
Figure 4. Bouger Gravity	8
Appendix	
Geochemical Assays	
Humus, soils, rocks	
Maps (Backpocket)	
Traverse Area A	
Traverse Area B-I, II	
Traverse Area C	

Introduction

The Butler/Eleven Claim Group is located between the Kirkland Lake-Larder Lake and Destor-Porcupine gold camps in the nose of the Blake River Synclinorium (Figure 2). It is composed of 57 claims in Benoit and Black Townships (Figure 3). Rocks of the Kinojevis Group underlie the property which contains a syenite intrusive in the central and western portion of the property.

Several past and present producing gold mines are located in the Kirkland Lake gold camp including the Macassa, Wright-Hargreaves, Kerr Addison, Lake Shore, Teck-Hughes, McBean, Ross Mine and the Canadian Arrow. The Ross Mine is north of the Butler/Eleven Claim Group in Hislop Township and has produced, to the end of 1986 when the latest figures were available (O.G.S. MP 134), 932,396 oz. Au and over 1.5 million oz. Ag. In the southwestern portion of Hislop Township is the Canadian Arrow Mine which produced over 17,000 Au between 1980-83.

A geochemical survey was conducted in the spring of 1987 and another one was conducted in the fall of 1987. A few elevated gold values were returned.

Humus was sampled and as a result, several gold-potential areas have been outlined, including an east-west area the length of a claim.

The author worked on the heavy mineral separates obtained from the Kirkland Lake Incentives Programs' (KLIP) Reverse Circulation Drilling of the Ontario Geological Survey (O.G.S.) from 1980-1984, and worked on portions of the basal till backhoe sampling program in 1981. Except for a roadside field stop in 1983, the author first visited the property in the spring of 1987.

Location and Access

The property is in the District of Cochrane, Ontario in the Larder Lake Mining Division and is to the north of the Kirkland Lake-Larder Lake Gold Belt. The Butler/Eleven property is formed of 57 claims which are in the northwest portion of Benoit Townships in Lot 12, between Concessions IV to VI and in the east central portion of Black Township immediately south of Butler Lake. It is at approximately 80° longitude and $48^{\circ} 20'$ Latitude in NTS area 42A/8 (fig 1.).

Access to the property is along Highway 11 which borders several of the claims and passes through some of the southern claims (Figure 3). Several small access roads cut across the property. The claim group is about 15 miles northwest of the city of Kirkland Lake. Utilities, resources and manpower of several small cities are readily available. There is a railway line which is one mile from the north-eastern boundary of the claim group.

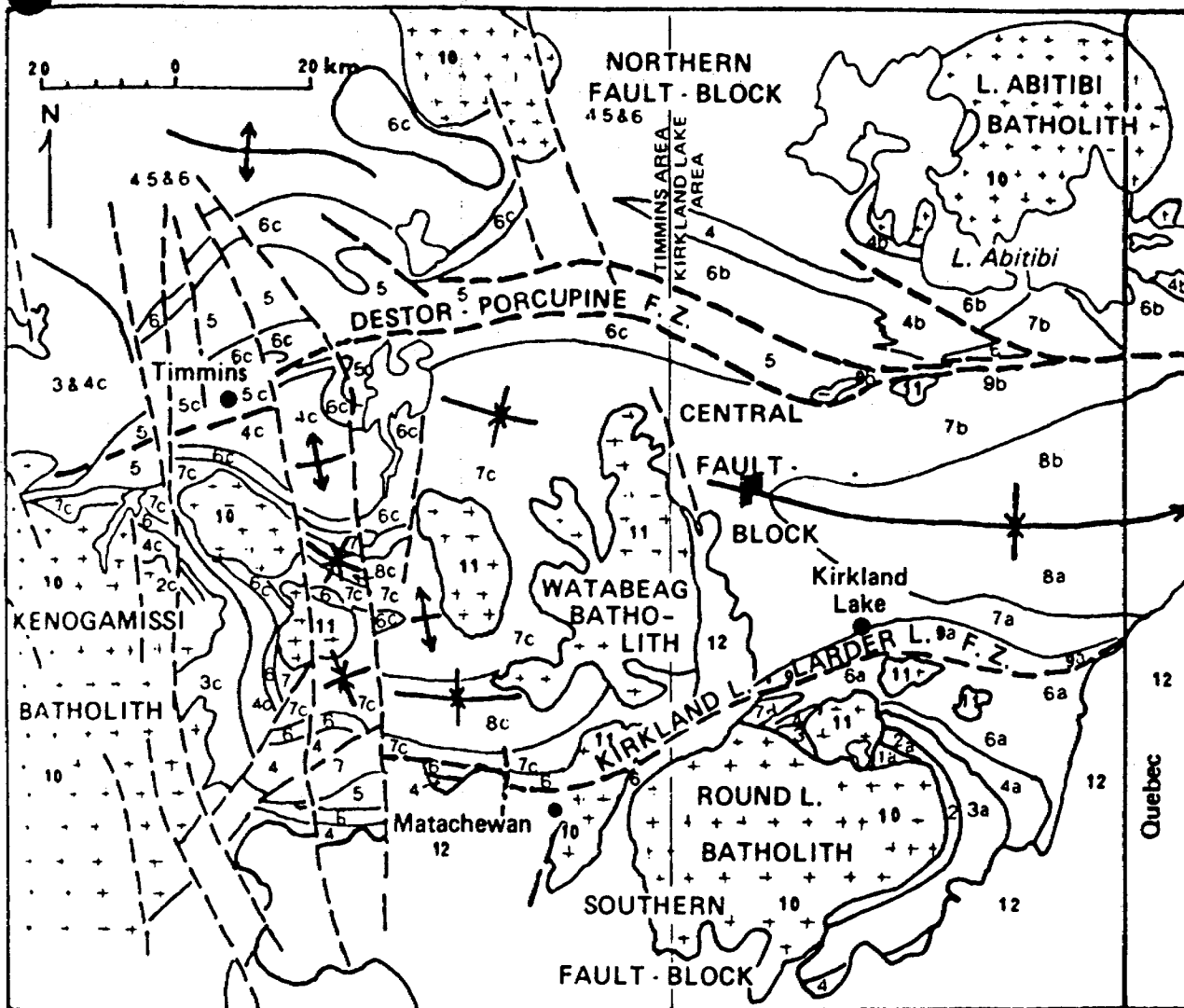
General Geology

The property is located to the north of the Kirkland Lake Larder Lake Fault Zone and to the south of the Destor-Porcupine Fault Zone (fig. 2). Both areas comprise historically gold-rich mining camps within the Abitibi Greenstone Belt of the Superior Structural Province of the Precambrian Shield.

The Central Fault Block of the Kirkland Lake Area (Jensen, 1985), lies to the west of the claims group. The claims are located on the axis, near the 'nose' of the Black River Synclinorium. The area is primarily underlain by tholeiitic volcanics of the Kinojevis Group and calc-alkalic rocks of the Blake River Group on the east. The large synclinorium is also formed of younger Timiskaming Group rocks which outcrop to the south along the Kirkland Lake-Larder Lake Fault Zone and to the north along portions of the Destor-Porcupine Fault Zone. Bouguer Gravity by the Ontario Geological Survey confirms the presence of abundant sediments to the north and east of the claim group which may be the steeply dipping Porcupine Group mapped by Satterly. A syenitic intrusive occurs in the nose of the syncline in the west central portion of the claim group and may have acted as a 'heat pump' pushing mineralization ahead of it into the volcanics and possibly incorporating mineralization within itself in the process.

Gabbroic rocks are reported in the adjacent properties and underlie portions of the claims. Lovell (1971) in describing the geology states: "Gabbroic and granitic stocks intrude the 'nose' of the syncline in northern Black and Benoit Townships, where the strike of the volcanic strata and corresponding magnetic contours is distorted."

Immediately to the north of the claim group is Mt. Kempis in the southwest corner of Cook Township. The area is formed of tholeiitic basalts showing pillowed lavas with tops to the south and is associated with east-west striking rocks of the Kinojevis Group with a finger of Proterozoic sediments present.



LEGEND

- Proterozoic**
 Keeweenawan diabase (not shown)
 12 Cobalt Group
- Archean**
 Matachewan diabase (not shown)
- Granitic rocks**
 11 Granodiorite, monzonite, quartz monzonite, syenite
 10 Massive to gneissic quartz diorite, tonalite, trondhjemite
- Upper Supergroup**
 9 9a* Timiskaming Group, 9b** Destor - Porcupine Complex
 8 8a, 8b, Blake River Group, 8c*** Blake River (Upper Fm., Tisdale Group)
- Lower Supergroups**
 7 7a, 7b, Kinojevis Group, 7c Kinojevis Group, (Middle Fm., Tisdale Group)
 6 6a Larder Lake Group, 6b Stoughton-Roquemaure Group, 6c Lower Fm., Tisdale Group
 5 5c Porcupine Group
- Deloro Group**
 4 4a Skead Group, 4b Hunter Mine Group, 4c Upper Fm., Deloro Group
 3 3a Catherine Group, 3c Middle Fm., Deloro Group
 2 2a Wabewawa Group, 2c Lower Fm., Deloro Group
 1 1a Pacaud tuffs ****
- *** refers to Kirkland Lake Area, south limb of synclinorium (Jensen 1978c, 1979).
 ** refers to Kirkland Lake Area, north limb of synclinorium (Jensen 1976, 1978b).
 **** refers to Timmins Area (Pyke 1980) (Goodwin 1965).

Geological map of the Timmins - Kirkland Lake area.

PROPERTY LOCATION AND GEOLOGY
FIGURE 2

Property Geology and History

The property is in an area described by L. Jensen as predominantly formed of iron-rich tholeiitic basalts with some magnesium-rich tholeiitic basalts as well as containing in the west portion a felsic intrusive syenitic body.⁽¹⁹⁸⁵⁾ Within the area, Jensen has defined the Blake River Synclinorium with the axis running in an east-west direction before gently curving to the northwest. The property is in the apex of the syncline and mainly on the northern limb. The central, younger units are aluminum-rich calc-alkalic basalts and andesitic lavas with some magnesium-rich tholeiitic basalts and some felsic tuffs. At the south end of the property, Proterozoic sediments are present including arkose, lithic to quartz-wacke and conglomerate.

The presence of the syenitic intrusive in the west central position suggests the possibility of the intrusive acting as a 'heat pump' forcing mineralization ahead of itself and incorporating mineralization either into itself or into adjacent volcanic rocks.

A large portion of the property is swampy and while little previous work has been done on the area, two conductors, one north of the property, were outlined in the past by Noranda. One outlined by Noranda was an east-west conductor in the northwest portion of the property in Benoit Township in the area bordering 951147/951150 and 951146/955642. Diamond drilling revealed a graphitic zone but significant traces of zinc were also found (O.G.S. Assessment Files).

The ground was later restaked by Lacana who confirmed this conductor and also found a north/south conductor to the south in the eastern area of present claim 951149. Lacana decided not to drill and the claims lapsed. In 1980-1981 the Ontario Government drilled Reverse Circulation Drillholes in the area of the Noranda EM conductor. Drillhole 80-01 assayed 1200 ppb's Au in silts.

Goliath Mines Property to the south was analyzed geochemically using soils and muds and returned anomalous values of 990 ppb's in -80 mesh fraction and found that gold mineralization was associated with grey and white quartz and

Property Geology and History (Cont'd)

quartz-carbonate veins and shear zones. A suspected north-west trending shear or fault zone was outlined by VLF-EM. The nature of this conductor was to be later determined by diamond drilling.

The Farakel Property to the southwest reported gold mineralization associated with quartz, quartz-carbonate and shear zones.

Selco's Butler Lake property to the west reported banded graphitic chert with disseminated pyrite from drillcore in a northeast striking conductive zone.

Two strong conductors were located in the Johnson Property to the southeast and to the east. Geoterrex outlined an I.P. anomaly associated with a previously delineated, weak conductor.

Domego Resources, to the east, reported weak Au, Ag, Cu, Zn and Pb anomalies in several locations from rocks and soils.

Legend Gold Mines to the southwest of Butler Lake in Black Township reported that four chip samples across 12" to 14" widths assayed 0.18 oz. Au/t to 0.94 oz. Au/t (O.G.S. Assessment Files). The nearby North Expo Property reported that grab samples from a shear returned 0.07 oz. Au/t with 5 oz of Ag as a maximum.

To the southeast, the former Past Producer Gold Mine, The Davidor (Bourkes) Mine produced between 1936 to 1938 a total of 1,298 tons of ore with an average recovery grade of 0.21 oz. Au/t. A test mill operated in 1947 milled over 315 tons of ore with a recovery grade greater than 0.14 oz. Au/t.

Ownership and Claims

The claims are 100% jointly owned by Jeanette Lourim and Diane Litwicki who each own 50% of the claim group:
Jeanette Lourim, 19 Mckayfield Rd, Toronto, Ontario M4J 4P6. #A 49632.
Diane Litwicki, 28 Rains, Toronto, Ontario, M6G 3H5.#A 49732.

The Total 57 claims in Benoit and Black Townships are:

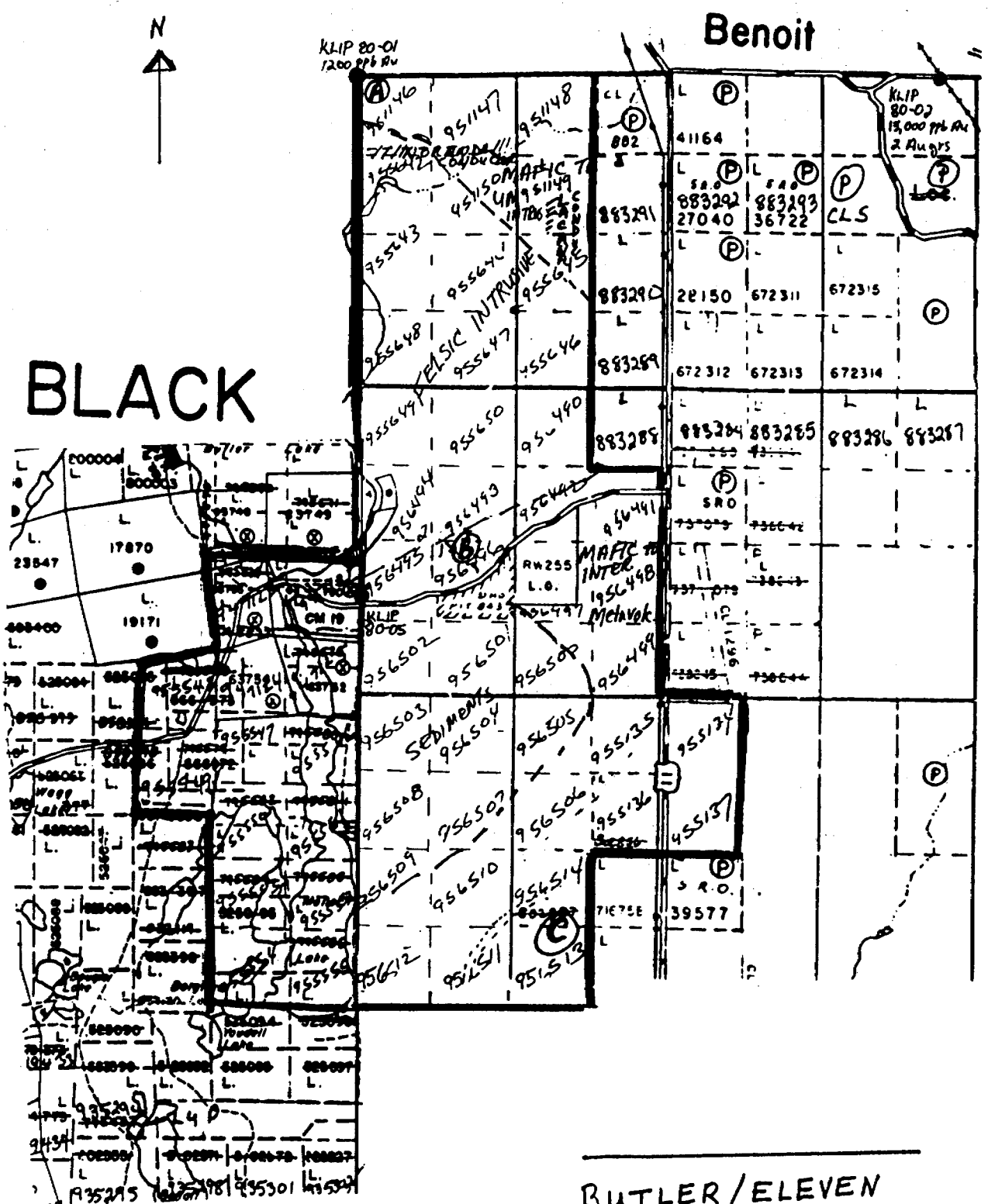
Black Twp. : L 947122, L947123, L947124, L947125, L955546, L955547
L 955548, L955549, L955550, L955551, L955552, L955553
L 955554, L955555. (14 claims)

Benoit Twp. L 951146, L951147, L951148, L951149, L951150,
L 955134, L955135, L955136, L955137
L 955642, L955643, L955644, L955645, L955646, L955647
L 955648, L955649, L955650.
L 956490, L956491, L956492, L956493, L956494, L956495
L 956496, L956497, L956498, L956499, L956500, L956501
L 956502, L956503, L956504, L956505, L956506, L956507
L 956508, L956509, L956510, L956511, L956512, L956513
L 956514. (43 claims).

The claim group is jointly owned .

50% by Jeanette Lourim 19 Mckayfield Rd.
#A 49632 Toronto, Ontario
M4J 4P6

50% by Diane Litwicki 28 Rains
#A 49732 Toronto, Ontario
M6G 3H5



BLACK

Benoit

KLIP 20-01
1200 Pfb RW

KLIP 80-02
15,000 Pfb RW
2 Aug 75

BUTLER/ELEVEN
CLAIM GROUP
Black/Benoit Twps
57 CLAIMS
Scale: 1" = 1/4 mile

Figure 3.

● KLIP R.C. Drillhole

Reverse Circulation Drilling

An Ontario Geological Survey Reverse Circulation Drillhole assayed 1200 ppb's Au in silts. No till was found in the sample but due to the fine nature of the sample the source may not be very local. To the east approximately 1-1/2 miles from the claim group an R.C. Drillhole 80-02 (figure 3) returned 15,000 ppb's Au in upper sands and 1300 ppb's in lower gravels. Overburden thickness varies from very shallow, (a few metres or less) to over a hundred feet and is formed of tills, glaciolacustrine and glacio-fluvial sands, gravels and clays. One KLIP drillhole encountered bedrock at 25 feet in the western portion of the southern claims (80-05). It contained no anomalous gold values and is adjacent to an esker south of Butler Lake.

The eskers are generally over 100 feet deep and it is known from KLIP (Kirkland Lake Incentive Program) drillholes (O.F.R. 5456, 5335, 5506, 5394, 5395, 5355) in the Munro Esker area and Misema Esker area that these valley regions are associated with Kimberlite indicators and hence are areas of diamond potential. H. Lee (1968) traced kimberlite indicators along the Munro Esker and found the source of the indicators to be a kimberlite in The Upper Canada Gold Mine in Gauthier Township. Thus a gold and kimberlite association occurs in the Kirkland Lake area. In Sheraton Township, less than 20 miles north-east of the claim group, a diamond known as the Jarvi diamond was found in overburden in 1971. While it was described as being 0.255 carats, it established the presence of greater than micro-diamonds in the area. Micro-diamonds found in the Kirkland Lake area are on display at the Royal Ontario Museum and were donated in 1986 (P.Wood, pers.comm.)

Pyrope, chrome diopside and other indicator minerals have been reported in a number of KLIP drillholes (OFR 5506, 5456) associated with the eskers in the Kirkland Lake area and thus the claims to the south of Butler Lake in Black Township are favourable kimberlite areas; furthermore, the eskers there are associated with a magnetic 'high' on their eastern flank.

KLIP R.C. Drillholes returned gold flakes in the basal till and other portions of the overburden from a number of holes in Benoit Township. In the north 5 gold flakes were found in basal till in one hole and 6 flakes of gold found in another till sample. One drillhole returned a total of 9

Reverse Circulation Drilling (Cont'd)

gold flakes from all sections. One drillhole to the east of the claim group contained 2 gold flakes and another drillhole to the southeast contained 2 gold flakes as well. The drillhole to the south east contained basal till with 1 gold flake and hence suggests the possibility of an up-ice source. Glacial striations in the south indicate an ice direction of 162° which would be in the direction of the claim group (i.e. as an up-ice source).

Mines and Deposits with Gold in Felsic Intrusives

Several mines in the Kirkland Lake area and elsewhere contain gold in felsic stocks or dykes, or otherwise have intrusives associated with them. The most prominent of these are: the Macassa Mine which contains Au in syenite as well as in the Timiskaming conglomerates, wackes and tuffs: "Syenites are an important host to gold mineralization in the mine," (Cherry, 1983), the Canadian Arrow in which Au is associated with pyrite that formed during alteration that accompanied the emplacement of quartz-carbonate veins into fractures: 'The ore-associated veins occur in the intrusive which is a quartz-poor monzonite.' (Cherry, 1982). The host rocks are basalts of the Kinojevis Group which are the same rocks that underlie the Butler/Eleven Claim Group; the Murphy-Garrison which contains a quartz-poor monzonite which only occurs as dykes in variolitic, felspar-phyric and massive basalts of the Kinojevis Group. While there is little monzonite present in the Murphy-Garrison Deposit, the large Garrison Stock crops out less than 0.2km from the pit and may be closer beneath the pit (Cherry, 1982).

The largest gold producer in Canada, The Kerr Addison Mine (10.2million oz Au) is also associated with intrusives. Hamilton (1983) says of the Kerr Addison Mine that it "lies within a splay of the Kirkland Lake-Larder Lake Break near the intersection of this major structure with a northwest-trending belt of the felsic intrusions in the Keewatin Basement."

In gold camps in other areas, felsic intrusives are important to Au mineralization. The Canoe Lake Stock in Lake of the Woods area is a quartz-diorite which contains past producers and prospects on the stock and on adjacent rocks. The Belmoral Mine in Quebec has gold in veins in the Bourlamaque Batholith.

Conclusion/Recommendations

The results of the geochemical survey confirm the presence of Au on the Butler/Eleven property

All three surveyed areas contain elevated and anomalous Au values in humus with the one on the northwest associated with slightly elevated arsenic, the central area associated with zinc and the southeastern area which is a claim-width wide, associated with nickel. Slightly elevated molybdenum is associated with all three areas.

The area is favourable for further work not only because of the results of the geochemical surveys but also because of the presence of the Canadian Arrow, the Ross Mine and the Davidor.

The presence of two conductors, one of which while graphitic, contains zinc values, may be important in future studies.

Several KLIP R.C. Drillholes in the vicinity returned highly anomalous gold values in the overburden with one sample assaying 0.5oz/t Au and another sample containing 3600 ppb's in upper tills. Numerous Au grains and flakes are reported in both till and non-till material. Nearby the Legend Gold Mines obtained 0.94 oz/t Au from chip samples. Eskers and the associated magnetic anomalies provide potential for the presence of kimberlites, the ore of diamonds and can also be useful for gold exploration.

A program of ground geophysics is recommended to outline geological structures and contacts and would consist of a Proton Magnetometer Survey and VLF-EM. This would be followed by a diamond drilling program of 10,000 feet.

An additional optional program of reverse circulation drilling is recommended for the southwestern portion of the property. In order to delineate areas of gold and diamond potential, a 3,000 ft program is recommended.

References

- Averill, S.A. and Fortesceau, J.A.C.
1983: Deep Overburden and Geochemical Sampling in Hearst, Catharine, McElroy, Gauthier, Arnold, Clifford and Bisley Twp. O.G.S.-O.F.R. 5456.
- Averill, S.A. and Thomson, Ian.
1981: Reverse Circulation and Rotary Drilling and Deep Overburden Geochemical Sampling and Marter, Catharine, McElroy, Skead, Gauthier and Hearst Townships. O.G.S.-O.F.R. 5335.
- Cherry, M.E. et al
1983: The Macassa Mine, Kirkland Lake in Summary of Field Work, O.G.S. MP-116.
- Cherry, M.E.
1982: Felsic Intrusives associated with Lode Gold Deposits in the Matheson Area, Cochrane District in Summary of Field Work, O.G.S. MP-106.
- Fortesceau, J.A.C., Lourim, J., et al
1984: A Synthesis and Interpretation of Basal Till Geochemical and Mineralogical Data Obtained from the KLIP Area. (1979-1982), Part I and Part II. O.G.S.-O.F.R. 5506.
- Hamilton, J.V.
1983: Geological Study of the Area of the Kirkland Lake-Larder Lake Break in Central McGarry Twp. in Summary of Field Work, O.G.S. MP-116.
- Jensen, L.S. and Langford, F.F.
1985: Geology and Petrogenesis of the Archean Abitibi Belt in the Kirkland Lake Area, Ontario O.G.S. - MP-123.
- Lee, H.
1968: An Ontario Kimberlite Occurrence Discovered by Application of the glaciofocus Method to a Study of the Munro Esker. G.S.C. Paper 68-7.
- Lourim, J.
1968a: Mid-Density Mineralogy of Glacial Overburden as an Indicator of Gold Mineralization in Benoit, Maisonville, Grenfell, Eby, Otto, Boston and McElroy Townships. O.G.S.-O.F.R. 5394.
- Lourim, J.
1982b: Mid-Density Mineralogy of Overburden as an Indicator of Gold Mineralization in Melba, Morrisette, Eby, Bisley, Arnold Townships. O.G.S.-O.F.R. 5395.

References (Cont'd)

Lovell, H.L.

1971: Geology of the Bourkes Area, District of Timiskaming.
ODMNA - G.R.92. Three Maps.

Thomson, Ian and Lourim, Jeanette.

1981: Mid-Density Mineralogy of Glacial Overburden as an
Indicator of Gold Mineralization in Marter, Catharine,
McElroy, Skead, Gauthier and Hearst Townships.
O.G.S.-O.F.R. 5335.

- Ontario Geological Survey Assessment Files, Benoit Township
- Ontario Geological Survey Assessment Files, Black Township
- O.G.S. Mineral Deposit Files, Benoit Township
- O.G.S. Mineral Deposit Files, Black Township

Maps:

Map 2205 - Timmins - Kirkland Lake, 1" to 4 miles.
Geological Compilations Series.

Map 2215 - Benoit and Massonville Townships in
G.R. 92, see Lovell, H. 1971, above.

Map 2213 - Tolstoi and Black Townships in G.R. 92, see
Lovell, H. 1971, above.

Map 295G - Ramore, Energy, Mines and Resources, 1970.

Map p2381- Quaternary Geology of the Ramore Area,
O.G.S., Baker, C. et al, 1979.

Map - NTS 42/A 8

Maps Included in the reports, above.

Further Resources Material

Lovell, H. Kirkland Lake Resident Geologist's Area, Northern
Region.

1984: in, Report of Activities-Regional and Resident
Geologists, Ont. O.G.S. Mp-122.

References (Cont'd)

Lovell, H. Kirkland Lake Resident Geologist's Area, Northern Region.

1985: in, Report of Activities-Regional and Resident Geologist, Ontario. O.G.S. MP-128.

Wood, J. et al, eds, O.G.S. Summary of Field Work, 1982, MP-106.

Wood, J. et al, eds, O.G.S. Summary of Field Work, 1984, MP-119.

Wood, J. et al, eds. O.G.S. Summary of Field Work, 1985, MP-126.

Estimated Budget

A. <u>Mob/Demob</u> - Drill Equipment	2,000	<u>2,000</u>
B. <u>Field Costs</u> -		
1. Personnel		
<u>Senior Geologist @350/day</u>		
- 10 days field preparation		
- 60 days drill supervision		
- 10 days report writing		
80 days @\$350/day	28,000	
<u>Misc. Labour</u>		
- 20 days @\$150/day	3,000	
2. Support Costs		
<u>Room</u>		
- 80 mandays @\$50/day	4,000	
<u>Food</u>		
- 80 mandays @30/day	2,400	
<u>Travel</u>		
- 1 person, Toronto		
to K.Lk. Return	500	
- Truck rental + gas @\$70/day		
60 days \$70/day	4,200	
		<u>42,100</u>
C. <u>Contract Costs</u>		
1. Linecutting -		
- 72 line miles @\$300/line mile		
(57 line miles + B.L.)	21,600	
2. Geophysics -		
<u>Proton Magnetometer</u>		
- 72 line miles \$150/line mile	10,800	
<u>VLF-EM</u>		
- 72 line miles @\$150/line mile	10,800	
3. Diamond Drilling		
- 10,000 ft @\$350/ft	300,000	
		<u>343,200</u>

Estimated Budget (Cont'd)

D. Analytical

- core assays - 500 samples
@ \$30/sample
(Au, Ag, Cu, Zn, As, Pb)

15,000
15,000

E. Report Writing

1. Drafting - 100hrs @ \$20/hr
2. Supplies, typing, copying

2,000
600
2,600

Subtotal

361,700.00

F. Other Costs

1. Management Fee @15%

54,255.00

415,955.00

2. Contingency Fee @10%

41,595.50
457,550.50

TOTAL

457,550.50

Optional Budget Estimate

A. Field Costs

1. Personnel -

Senior Geologist @\$350/day
- 5 days office preparation
- 10 days field supervision
- 10 days report writing
25 days @\$150/day 8,650

Misc. Labour/field assist.
@\$150/day
- 10 days @\$150/day 1,500
10,150

2. Support Costs -

Room
- 2 persons - 10 days/person
10 days @\$30/person 1,000

Food
- 2 persons - 10 days/person
10 days @\$30/person 600

Travel
- 2 persons, Toronto to
K.Lk. return 1,000
- truck rental, gas
4X4 @\$70/day - 10 days 700

Communications 500

Supplies
- field and office 1,500
5,300

B. Contract Costs

1. Reverse Circulation Drilling

- @\$30/ft
- 3,000 ft \$30/ft 90,000

2. Sample Preparation of
Heavy Mineral Separates

- 400 samples at \$20/sample 8,000
98,000

Optional Budget Estimate (Cont'd)

C. Analytical:

Geochemical Analysis

- 400 samples @ \$30/sample 12,000

Microscope Analysis

- 400 samples @ \$20/sample 8,000
20,000

D. Report Preparation

1. Drafting - 100 hrs. @ \$20/hr 2,000

2. Supplies, typing, copying 500
2,500

Subtotal 135,950

E. Other Costs:

1. Management Fee @15% 20,393

156,343

2. Contingency Fee @10% 15,634

TOTAL 171,977

Certificate

I, JEANETTE LOURIM, of the City of Toronto, Province of Ontario, hereby declare that

1. I am a consulting geologist working from my office at 19 Mckayfield Road of the City of Toronto, of the Province of Ontario.
2. I hold an Honours B.Sc. from the University of Toronto and a B.A. from Wayne State University, in the City of Detroit, State of Michigan, U.S.A.
3. Have practiced my profession as a geologist since 1975 for both government and industry in Quebec, Ontario, Manitoba, Saskatchewan and British Columbia.
4. Worked on the Kirkland Lake Incentives Program for the Ontario Government for four and one-half years.
5. Researched assessment files and reports and drew on known sources and maps for information in this report.
6. I am joint owner of this property.
7. I personally managed the field surveys.

February 22, 1988
February, 1988

Jeanette Lourim

Jeanette Lourim

Jeanette Lourim and Associates
19 Mckayfield Road
Toronto, Ontario
M4J 4P6

(416) 467-1437



#076
DOCUM.
1880



42A08SW0011 2.10857 BENOIT

900

Mining

Sand Management

Type of Survey(s) **EXPENDITURES (CONSULTANTS REPORT) Sec. 77(19)** Township or Area **BENOIT Twp (M326)**

Claim Holder(s) **Jeanette Lourim** Prospector's Licence No. **Lourim: A 49632**
DIANE LITWICKI **LITWICKI: A 49732**

Address **19 McKayfield Rd Toronto, ONT M4S 4P6** **28 RAINS AVE TORONTO, ONT M6G 3H5**

Survey Company **J. L. LOURIM & ASSOC. CONS. GEOLOGISTS, TORONTO, ONT. M4S 4P6** Date of Survey (from & to) _____ Total Miles of line Cut _____

Name and Address of Author (of Geo-Technical report) **J. L. LOURIM, 19 McKayfield Rd, Toronto, Ont. M4S 4P6**

Credits Requested per Each Claim in Columns at right

Mining Claims Traversed (List in numerical sequence)

Special Provisions	Geophysical	Days per Claim
For first survey: Enter 40 days. (This includes line cutting)	- Electromagnetic	
	- Magnetometer	
For each additional survey: using the same grid: Enter 20 days (for each)	- Radiometric	
	- Other	
	Geological	
	Geochemical	

Man Days	Geophysical	Days per Claim
Complete reverse side and enter total here	- Electromagnetic	
	- Magnetometer	
	- Radiometric	
	- Other	
	Geological	

Airborne Credits	Days per Claim
Note: Special provisions credits do not apply to Airborne Surveys.	

Mining Claim			Mining Claim		
Prefix	Number	Expend. Days Cr.	Prefix	Number	Expend. Days Cr.
L	951148	30	L	956510	20
	951149	20			
	955134	20			
	955135	20			
	955137	20			
	955644	20			
	955645	20			
	955646	20			
	955647	20			
	955648	20			
	955649	20			
	955650	20			
	956490	20			
	956491	20			
	956492	20			
	956497	20			
	956498	20			
	956499	20			
	956500	20			
	956501	20			
	956504	20			
	956505	20			
	956507	20			

Expenditures (excludes power stripping)

Type of Work Performed **CONSULTANTS REPORT (Sec. 77(19))**

Performed on Claim(s) _____

Calculation of Expenditure Days Credits

Total Expenditures	+	Total Days Credits	=	
\$ 7,350.		15		490

Instructions
Total Days Credits may be apportioned at the claim holder's choice. Enter number of days credits per claim selected in columns at right.

Total number of mining claims covered by this report of work. **24**

For Office Use Only

Total Days Cr. Recorded	Date Recorded	Mining Recorder
490	Mar. 7, 1988	M.G. Weerme
	Date Approved as Recorded	Branch Director
		See work statement

Date **March 4, 1988** Recorded Holder or Agent (Signature) **Jeanette Lourim**

Certification Verifying Report of Work

I hereby certify that I have a personal and intimate knowledge of the facts set forth in the Report of Work annexed hereto, having performed the work or witnessed same during and/or after its completion and the annexed report is true.

Name and Postal Address of Person Certifying **JEANETTE LOURIM**

19 McKayfield Rd, Toronto, Ont. M4S 4P6

Date Certified **March 4, 1988** Certified by (Signature) **Jeanette Lourim**



Ontario

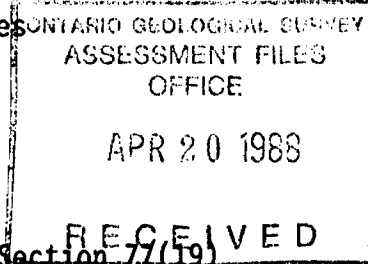
Ministry of
Northern Development
and Mines

Ministère du
Développement du Nord
et des Mines

March 29, 1988

Your File: W8808-76
Our File: 2.10857

Mining Recorder
Ministry of Northern Development and Mines
4 Government Road East
Kirkland Lake, Ontario
P2N 1A2



Dear Sir:

RE: Consultant's Report submitted under Section 77(19)
of the Mining Act R.S.O. 1980 on Mining Claims
L-951148 et al in Benoit Township

The enclosed statement of assessment work credits for Consultant's Report has been approved as of the above date.

Please inform the recorded holder of these mining claims and so indicate on your records.

Yours sincerely,

W.R. Cowan, Manager
Mining Lands Section
Mines & Minerals Division

Whitney Block, Room 6610
Queen's Park
Toronto, Ontario
M7A 1W3

Telephone: (416) 965-4888

OK-DK:p1
Enclosure (2)

cc: Resident Geologist
Kirkland Lake, Ontario

Ms Jeanette Lourim
19 McKayfield Road
Toronto, Ontario
M4J 4P6

Ms Diane Litwicki
28 Raines Ave.
Toronto, Ontario
M6G 3H5



Ontario

Ministry of Northern Development and Mines

Technical Assessment Work Credits

File 2.10857

Date March 29, 1988 Mining Recorder's Report of Work No. W8808-76

Recorded Holder: Jeanette Lourim and Diane Litwicki
Township of: Benoit and Black

Table with 2 columns: Type of survey and number of Assessment days credit per claim; Mining Claims Assessed. Includes sections for Geophysical, Geological, and Geochemical surveys, and a list of assessed claims.

Special credits under section 77 (16) for the following mining claims

No credits have been allowed for the following mining claims
not sufficiently covered by the survey
insufficient technical data filed

The Mining Recorder may reduce the above credits if necessary in order that the total number of approved assessment days recorded on each claim does not exceed the maximum allowed as follows: Geophysical - 80; Geological - 40; Geochemical - 40; Section 77(19) - 60.

REFERENCES

AREAS WITHDRAWN FROM DISPOSITION

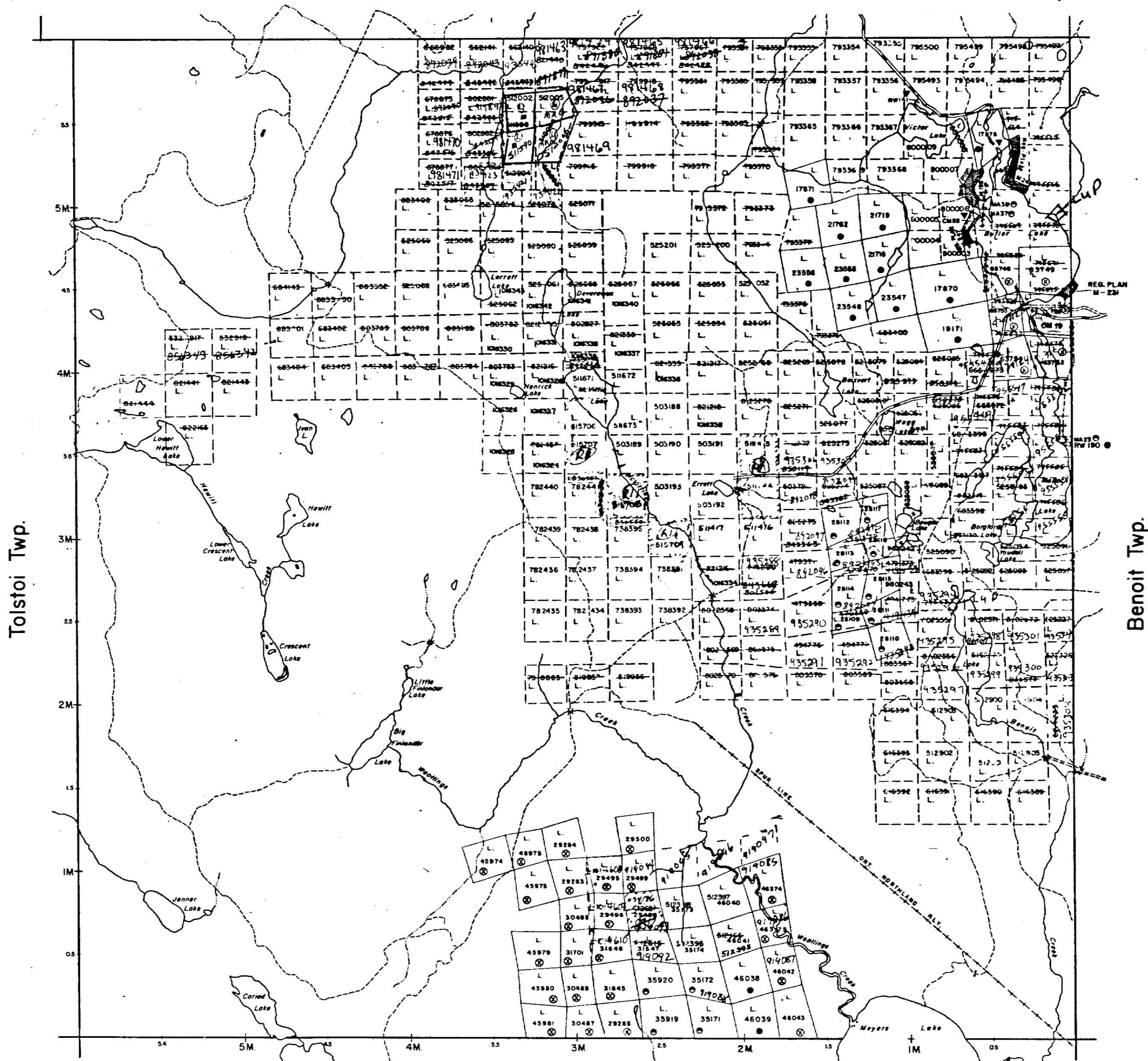
- M.R.O. - MINING RIGHTS ONLY
- S.R.O. - SURFACE RIGHTS ONLY
- M.+S. - MINING AND SURFACE RIGHTS

Description	Order No.	Date	Disposition	File
Sec 36/30	W. 8/86	24/11/65	M.R.S.	
Sec 36/30	034/86	24/11/67	M.R.S.	

NOTES:

400' frontage on Buller Lake withdrawn from disposition for proposed summer resort development, July 6, 1965
File 164586

Playfair Twp.



Lee Twp.

LEGEND

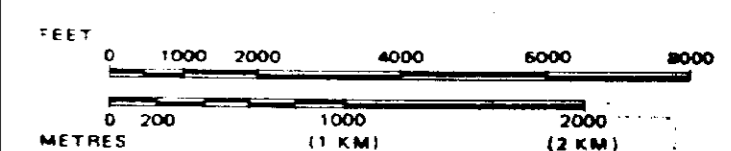
- HIGHWAY AND ROUTE No.
- OTHER ROADS
- TRAILS
- SURVEYED LINES:
 - TOWNSHIPS, BASE LINES, ETC.
 - LOTS, MINING CLAIMS, PARCELS, ETC.
- UNSURVEYED LINES:
 - LOT LINES
 - PARCEL BOUNDARY
 - MINING CLAIMS ETC.
- RAILWAY AND RIGHT OF WAY
- UTILITY LINES
- NON-PERENNIAL STREAM
- FLOODING OR FLOODING RIGHTS
- SUBDIVISION OR COMPOSITE PLAN
- RESERVATIONS
- ORIGINAL SHORELINE
- MARSH OR MUSKEG
- MINES
- TRAVERSE MONUMENT

DISPOSITION OF CROWN LANDS

TYPE OF DOCUMENT	SYMBOL
PATENT, SURFACE & MINING RIGHTS	
" SURFACE RIGHTS ONLY	
" MINING RIGHTS ONLY	
LEASE, SURFACE & MINING RIGHTS	
" SURFACE RIGHTS ONLY	
" MINING RIGHTS ONLY	
LICENCE OF OCCUPATION	
ORDER-IN-COUNCIL	
RESERVATION	
CANCELLED	
SAND & GRAVEL	

NOTE: MINING RIGHTS IN PARCELS PATENTED PRIOR TO MAY 4 1913, VESTED IN ORIGINAL PATENTEE BY THE PUBLIC LANDS ACT, R.S.O. 1970, CHAP. 380, SEC. 63, SUBSEC 1

SCALE: 1 INCH = 40 CHAINS



TOWNSHIP
BLACK
M.N.R. ADMINISTRATIVE DISTRICT
KIRKLAND LAKE
MINING DIVISION
LARDER LAKE
LAND TITLES / REGISTRY DIVISION
COCHRANE

Ministry of Natural Resources
Land Management Branch
Ontario

Date JANUARY 1985
Number **G-3197**



Cook Twp.

THE TOWNSHIP OF

BENOIT

DISTRICT OF COCHRANE

LARDER LAKE MINING DIVISION

SCALE: 1-INCH=40 CHAINS

LEGEND

- PATENTED LAND ● or ⊕
- CROWN LAND SALE Ⓢ or C.S.
- LEASES Ⓛ
- LOCATED LAND Loc.
- LICENSE OF OCCUPATION L.O.
- MINING RIGHTS ONLY M.R.O.
- SURFACE RIGHTS ONLY S.R.O.
- ROADS —
- IMPROVED ROADS —
- KING'S HIGHWAYS —
- RAILWAYS —
- POWER LINES —
- MARSH OR MUSKEG —
- MINES —
- PATENTED S.R.O. —
- CANCELLED —

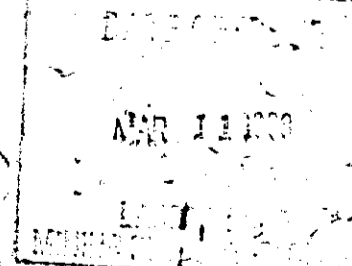
NOTES

400' Surface rights reservation around all lakes & rivers.

Gravel Reserve Shown Thus:

400' frontage on Butler Lake withdrawn from disposition for proposed summer resort development. File 164586

Areas withdrawn from staking under Section 2 of the Mining Act (1940-1951) File _____ Date _____ Disposition _____

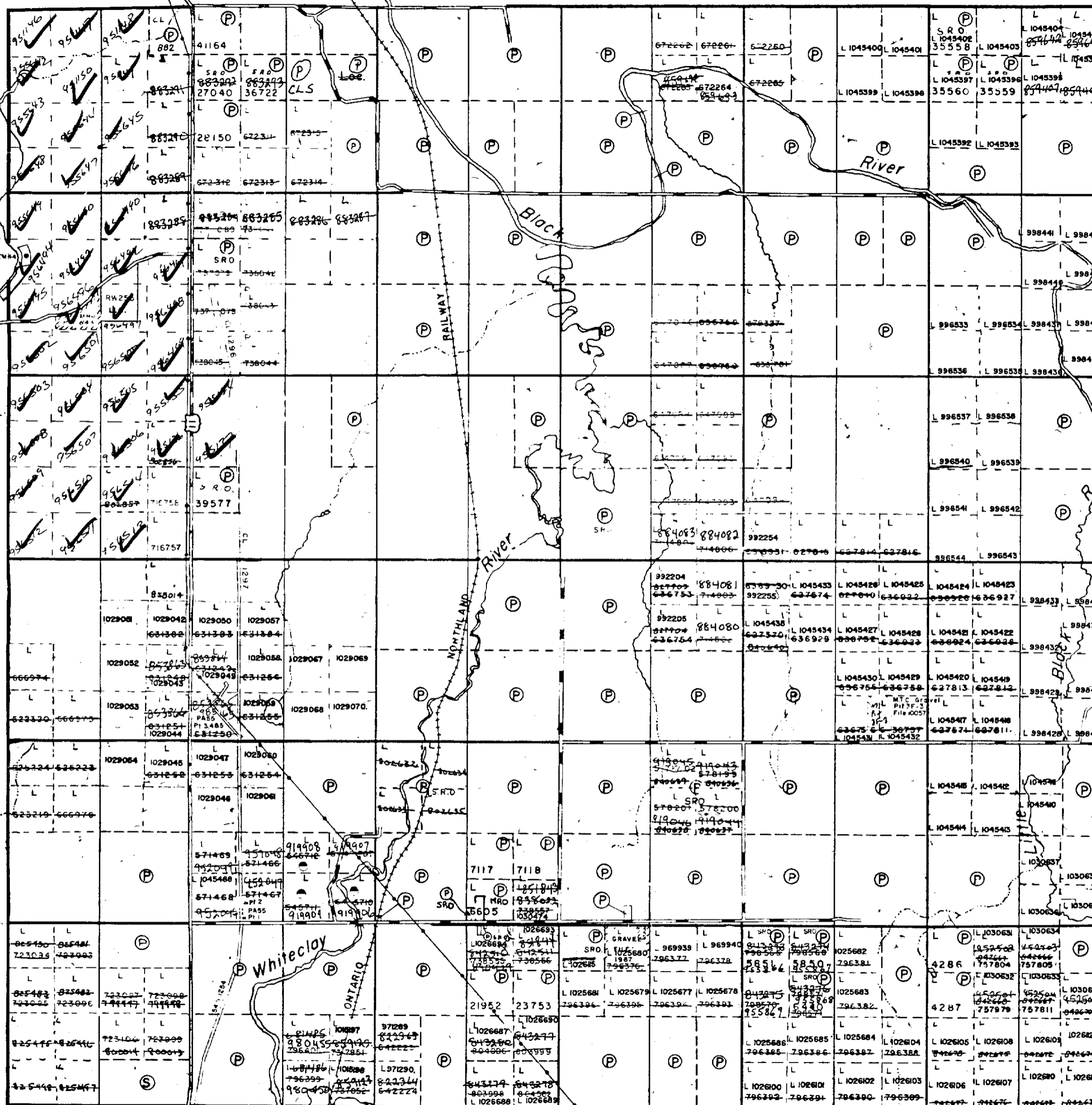


PLAN NO.-M.326#10

ONTARIO
MINISTRY OF NATURAL RESOURCES
SURVEYS AND MAPPING BRANCH

Black Twp.

Butler L.
Reg. Pl. M231



VI
V
IV
III
II
I

Melba Twp.

Maisonville Twp.

