



42A09SE0258 13 GUILBORD

010

GUILBORD TOWNSHIP REPORT NO. 10

This file contains work performed by Can. Johns Manville on claim:

L.56551

Hole # 1

Sept/50

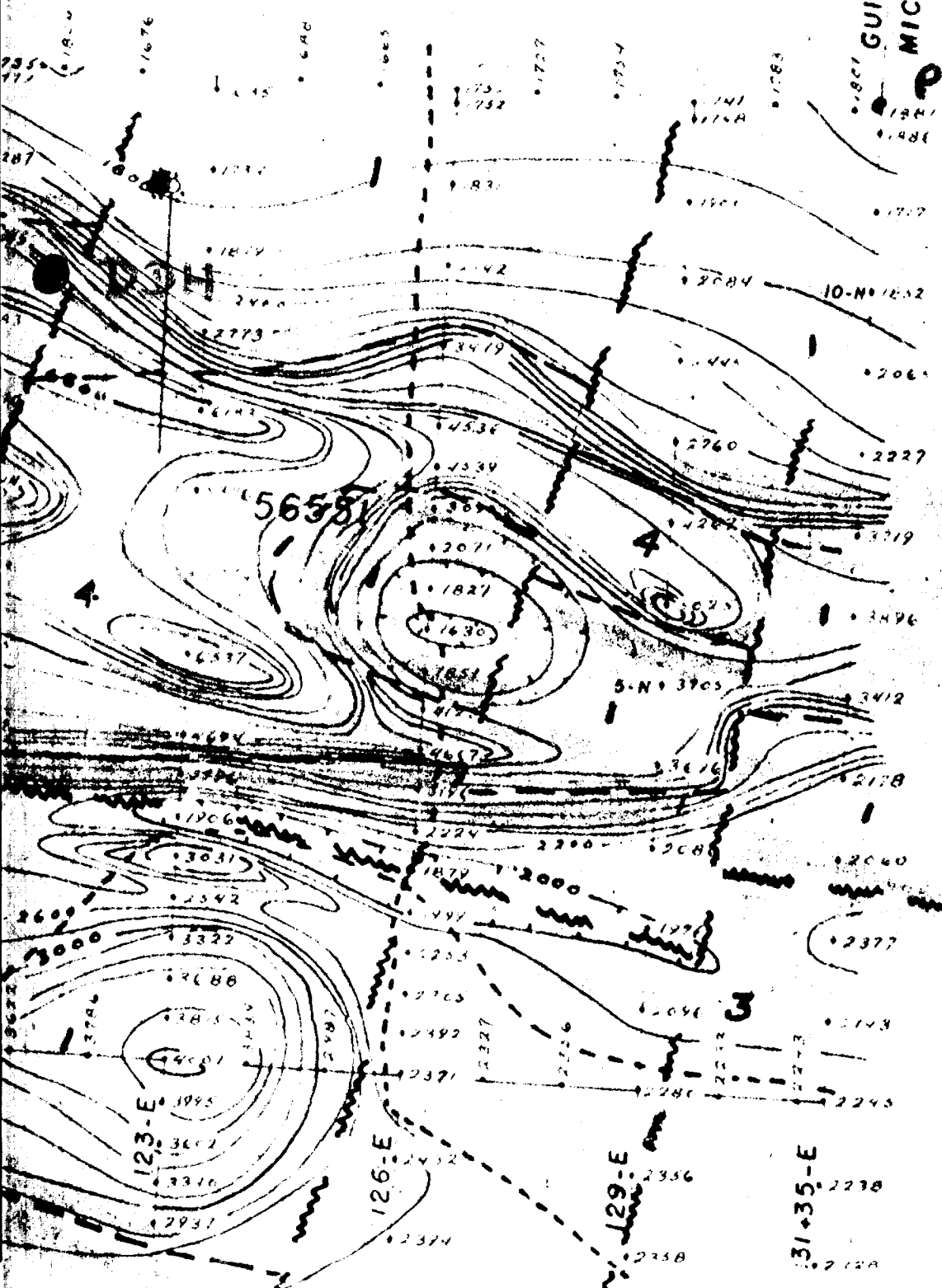
1953

K. G. HONEYMAN

1" = 200'

GUIBORD TWP.
MICHAUD TWP.

POST # 1



2 56551

CANADIAN JOHNS-MANVILLE (ONT) LTD.

Diamond Drill Log

PROPERTY Claim 56551 Guibord Twp.

Date Begun	Sept. 12, 1950	Location:	Claim 56551
Finished	" 18 "		1060' W & 260' S #1 Post
Depth	386'		Bearing S 8 W Dip 45 deg.

<u>Footage</u>	<u>Rock Type</u>	<u>Description</u>
0 - 4		Casing
4 - 177		Medium green, medium grained gabbro - 50% pyroxene, 50% feldspar with milky white quartz stringers. At 82' scant pyrite mineralization - trace of chalcopryrite. 148 - 170 Coarse-grained phase. 170 - 177 Pyroxene with gabbro - 75% fairly dark green pyroxene.
177 - 186	Pyroxenite - medium dark green - medium grained non-serpentinized.	
186 - 223	Moderately carbonated, moderately serpentinized amphibolite-pyroxenite (?). Fine grained, dark green pyroxene grains are visible. Carbonate stringers with some pyrite, pyrrhotit mineralization with trace of chalcopryrite. Contacts at 177, 186 are gradational.	
223 - 228	Biotite with lamprophyre (?) with carbonate stringers and some pyrite. 223 - 228 highly sheared.	
228 - 282	Silicified feldspar porphyry mineralized with pyrite, chalco-pyrite, scant galena. The feldspar phenocrysts are up to 5 mm diameter - milky white square and rectangular.	
282 - 332	Same as 186 - 223.	
332 - 386	Not logged.	

Logged by J. S. Koski

SE 1/4 of S 1/2 Lot 1, Con. 6.
(No sketches attached)

3-1-97