



Property: Ginn claim L-512573 Hislop toenshi
 Location: 1261 ft. south of Con V - VI line and
 1234.5 ft. west of Lot 3 - 4 line.
 Bearing : N 35° 27' E. Dip: at collar 45 deg., at 348 ft. 32 deg.
 Length : 352 feet.
 Drilled by Heath and Sherwood Company Sept 9 - 13, 1980.
 Logged by P. Ginn and G.E. Parsons.

- 0 - 28.0 Overburden
 28.0 -155.0 Andesite: -massive; dark green; hard; medium grained magnetic gabbroic rock grading to a fine grained gabbro and at approximately 84 ft. to a normal dense andesite with scattered small amygdules filled with calcite, quartz, and/or a black chlorite.
 155.0-174.0 Gabbro: - massive; uniform; dark green; hard; mostly magnetic; breaks clean; first contact definite, second grades into the breccia following.
 174.0-352.0 Destor-Porcupine Fault Zone.
 174.0-216.0 Breccia: a fractured to highly brecciated gabbroic rock cemented with black talc-serpentine; approximately 10% white carbonate seams.
 216.0-255.0 Schistose Breccia Zone: above becomes more schistose and altered until finally from 236 on it is composed of soft, black, magnetite-rich fragments in a matrix of greenish carbonate.
 226.7-229.0 Fault: - several inches of chloritic and talcose mud; 40% white carbonate; slips at 65 deg. to the core.
 243.0-245.5: - 60% of ribbon like seams of quartz, 1/4" wide and up at 30 - 45 deg. to the core; one seam has 5% of chalco;
 Sample # 1233, ... 0.06 Oz. Au and 0.27 % Cu per ton. over 2.5 ft.
 255.0- 321.0: - Quartz Zone: - Ranges from 30% to 100% quartz in mostly altered, silicified gabbro; void of sulphides except where sampled below.
 255.0-259.0- Altered gabbro; approx 50% qtz. with minor chalco.
 Sample #1234 0.01 oz Au per ton over 4.0 ft.
 259.0-263.0: quartz, white to slightly pinkish, partly vuggy; very brittle; a few mineralized chloritic frags; approx 1% chalco.
 sample #1235 0.02 oz. Au and 0.72% Cu. per ton over 4.0 ft.
 321.0-344.0 Gabbro: dark blackish to brownish; fine to med. grained; mostly flecked with 5% leucoxene; quite magnetic.
 344.0-352.0; Quartz: -white locally greenish tinged; 15% altered gabbro fragments; odd specks of chalco.

Core specimens at 50, 75, 100, 125, 150, 170, 186, 200, 225, 245,
 275, 300, and 325 ft.

End of Hole at 352 ft.

Property: Ginn Claim L 512572, Hislop Township
Location: 1143 ft. south of Con. V-VI line and
1464 ft. west of Lot 3-4 line.

Bearing: N 40 deg. E. Dip: at collar 45 deg. at 343 ft. 42 deg.

Length: 347 ft.

Drilled by Heath and Sherwood Company Sept / 3-17 , 1980.

Logged by P. Ginn and G.E. Parsons.

0.0 - 36.0 Overburden

36.0 - 42.0 Breccia, angular to subrounded frags of qtz. and a siliceous green rock intermixed with andesite.

42.0-- 203.5 Andesite, dark green; fine grained with scattered zones of small amygdules.
201.5-203.5 black chlorite, magnetite. 2% pyrite plus chalcopyrite in flow breccia.
Sample #1237 1.1 oz. Au and 0.30% Cu over 2 ft.

203.5 -246.0 Gabbro?: dark green; varies from fine grained andesitic type to medium grained gabbro; magnetic.
237 -238.5 Fault; 1 ft. of light green talcose-chloritic mud; $\frac{1}{2}$ ft. of white carbonate.

246.0-347.0 Destor Porcupine Fault Zone: a mix of a soft, black, talcose and generally fragmented rock and a hard variously altered gabbroic rock.
268.0-279.3: gabbro with 50% a clotty dense pink felsitic material with up to 3% chalcopyrite; sample #1238 0.38 oz. Au and 0.83% Cu/ 2.3'.
277.8-279.2: 7" qtz. with 3% chalcopyrite; sample #1239, 0.17 oz. Au and 0.06 % Cu over 1.4 ft.
329.0-330.0: Fault; 4" of soft mud; some lips at 40 deg. to the core.
332 Fault: $\frac{1}{2}$ " of mud; slips at 60 deg. to the core.

Core specimens (12) at 50, 74, 100, 125, 150, 175, 198, 225, 250, 275, 300 and 325 ft.

END OF HOLE 347 ft.

352

(99)

350
347
199

63.3791

MEAP No 2

MEAP - KL-147

31+70W
28+42W

40°

LOT 5

LOT 4

73+25 1/4

26+79W

L 512572

L 512573

CON VI
CON V

53+05N

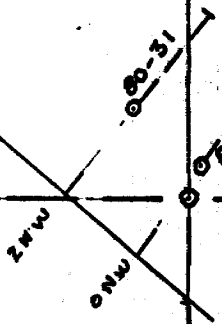
LOT 4

LOT 3

1326 1/4

0+00W

Base Line



L 512570

L 512571

LOCATIONS

| D.D.H | South of | West of | <u>Bcg</u> | <u>DIP</u> |
|-------|---------------|--------------|-------------|------------|
| | Con V-VI line | Lot 3-4 line | | |
| 80-30 | 12+61' | 13+24 1/2' | N 35° 27' E | 45° |
| 80-31 | 11+43' | 14+64' | N 40° E | 45° |

LOCATION SKETCH
D.D.H. 80-30 & 31
HISLOP TWP.
1 in = 400 FT



SWASTIKA LABORATORIES LIMITED

P.O. BOX 10, SWASTIKA, ONTARIO P0K 1T0
TELEPHONE: (705) 642-3244
ANALYTICAL CHEMISTS • ASSAYERS • CONSULTANTS

Certificate of Analysis

Certificate No. 50177

Date: September 26 1980

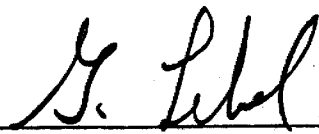
Received Sept. 16/80 11 Samples of Ore, Split Core, Sludge

Submitted by G. E. Parsons Limited, Matheson, Ontario Per: P. Ginn

| SAMPLE NO. | GOLD Oz./ton | COPPER % |
|------------|-----------------|-------------|
| 1232 | 0.20 | |
| 1233 | 0.06 | 0.27 |
| 1234 | 0.01 | |
| 1235 | 0.02 | 0.72 |
| 1236 | 0.002 | |

Hole 80-30

| | |
|----------|-------|
| 207-217' | N11 |
| 217-227' | N11 |
| 227-237' | N11 |
| 237-247' | 0.002 |
| 247-257' | 0.03 |
| 257-267' | 0.02 |

Per 
G. Lebel - Manager

ESTABLISHED 1928



SWASTIKA LABORATORIES LIMITED

P.O. BOX 10, SWASTIKA, ONTARIO P0K 1T0

TELEPHONE: (705) 642-3244

ANALYTICAL CHEMISTS • ASSAYERS • CONSULTANTS

Certificate of Analysis

Certificate No. 50235

Date: Oct. 6, 1980

Received Sept. 25, 1980 18 Samples of sludges and core

Submitted by G.E. Parsons Ltd., Matheson, Ont.

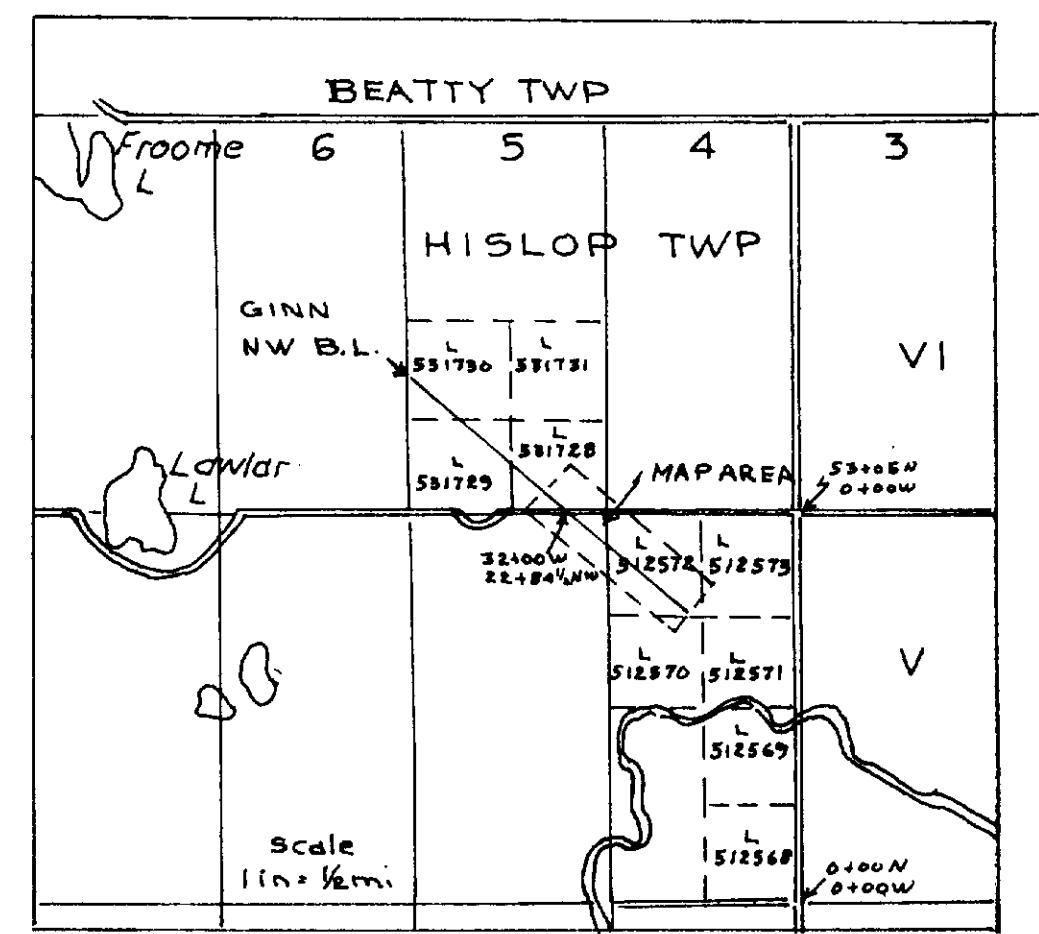
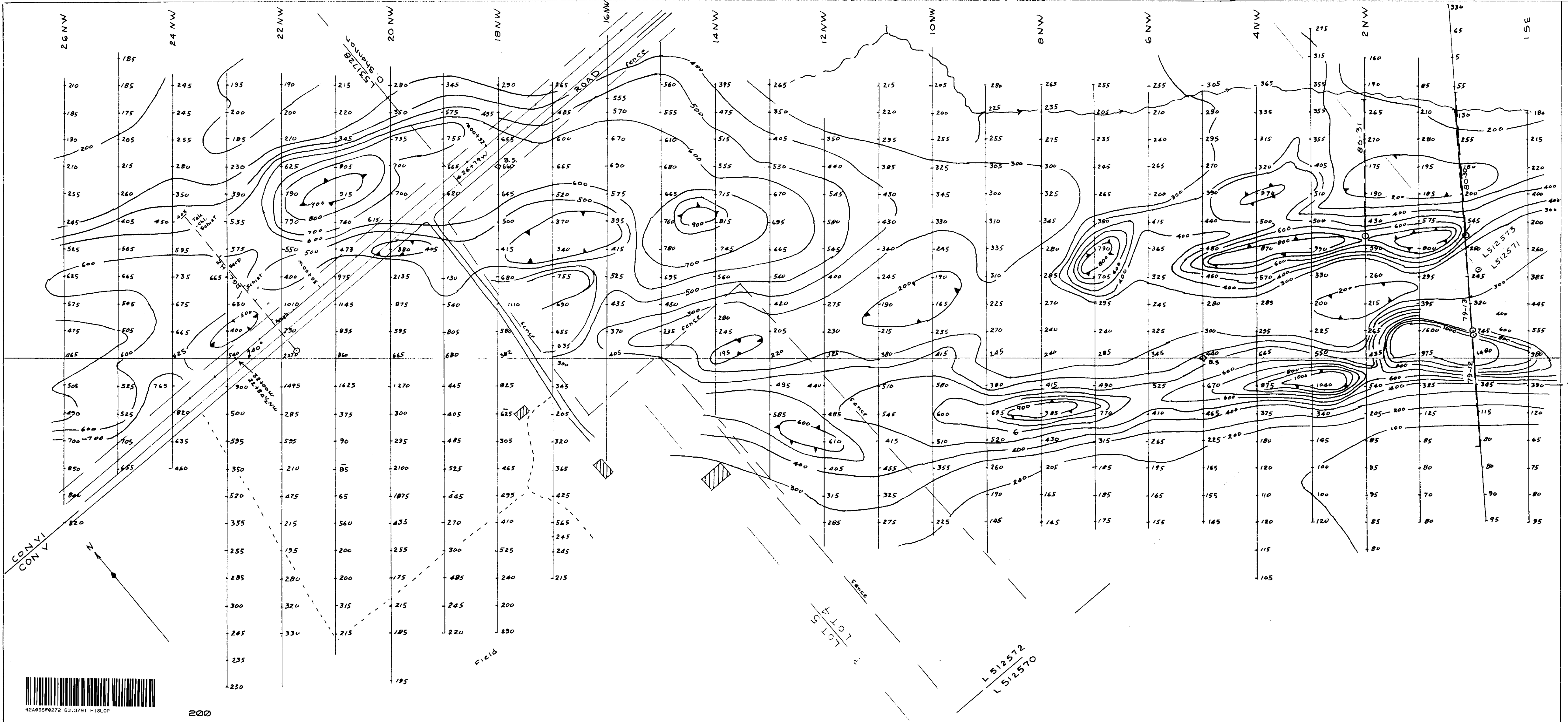
| SAMPLE NO. | GOLD Oz./ton | COPPER % |
|------------|-----------------|-------------|
| Hole 80-31 | | |
| 197-207' | NIL | |
| 207-217' | NIL | |
| 217-227' | NIL | |
| 227-237' | NIL | |
| 237-247' | 0.02 | |
| 247-257' | 0.02 | |
| 257-267' | NIL | |
| 267-277' | 0.01 | |
| 277-287' | 0.005 | |
| 287-297' | 0.005 | |
| 297-307' | 0.002 | |
| 307-317' | 0.002 | |
| 317-327' | 0.002 | |
| 327-337' | 0.02 | |
| 337-347' | 0.005 | |
| 1237 | NIL | 0.30 |
| 1238 | 0.38 | 0.83 |
| 1239 | 0.17 | 0.86 |

Per G. Lebel

G. Lebel, Manager

ESTABLISHED 1928





Inst.: McPhar M700 magnetometer
 Operator: M. Sloan

MAGNETICS
 Ginn NW Base Line
 GINN CLAIMS
 HISLOP TWP.
 ONT.
 1 in = 100 FT.

