



42A09SW0273 18 HISLOP

010

DIAMOND DRILLING

TOWNSHIP: HISLOP

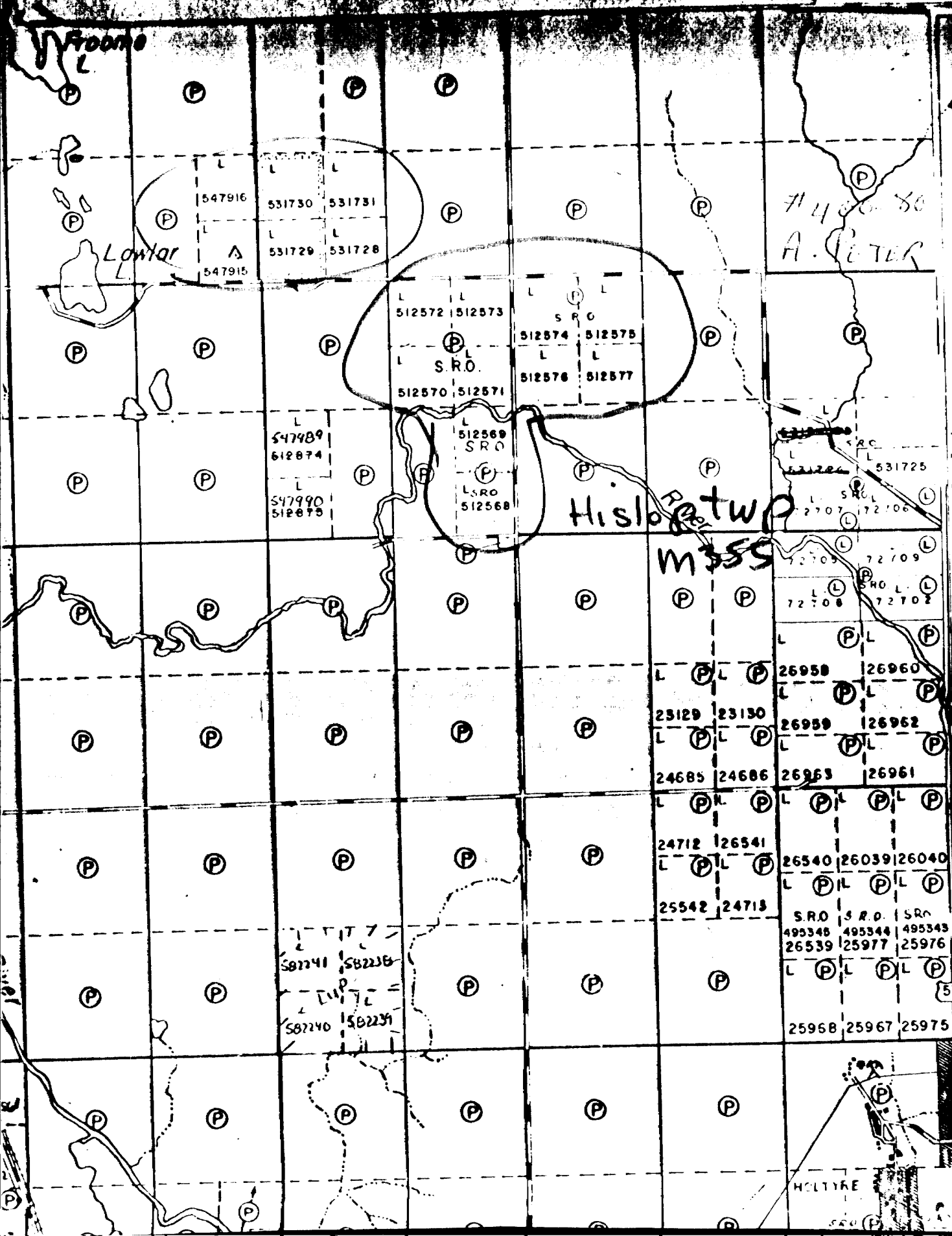
REPORT No.: 18

WORK PERFORMED BY: A. PETER GINN

<u>CLAIM No.</u>	<u>HOLE No.</u>	<u>FOOTAGE</u>	<u>DATE</u>	<u>NOTE</u>
L 512573	80-30	352.0	Sept./80	(1)
L 512572	80-31	347.0	Sept./80	(1)

NOTES: (1) # 400-80

# Beatty Twp



VI

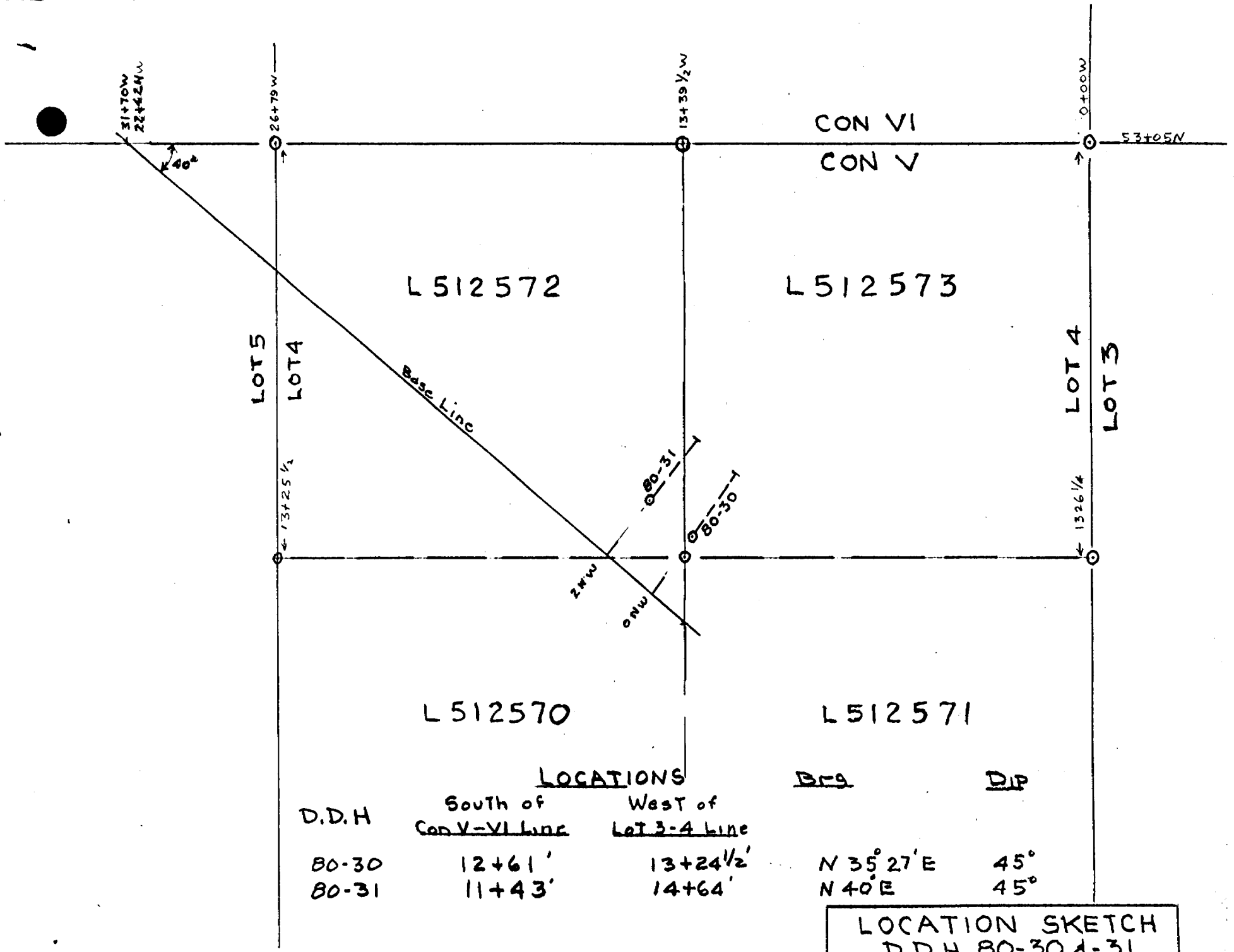
V

IV

III

II

Assessment Copy #2



D.D.H	LOCATIONS		Brg	DIP
	South of Con V-VI Line	West of Lot 3-4 line		
80-30	12+61'	13+24 1/2'	N 35° 27' E	45°
80-31	11+43'	14+64'	N 40° E	45°

LOCATION SKETCH  
 D.D.H. 80-30 & 31  
 HISLOP TWP.  
 1 in = 400 FT

Property: Ginn claim L-512573 Hislop township.  
 Location: 1261 ft. south of Con V - VI line and  
 1234.5 ft. west of lot 3 - 4 line.  
 Bearing : N 35° 27' E. Dip: at collar 45 deg., at 348 ft. 32 deg.  
 Length : 352 feet.  
 Drilled by Heath and Sherwood Company Sept 9 - 13, 1980.  
 Logged by P. Ginn and G.E. Parsons.

- 0 - 28.0 Overburden  
 28.0 - 155.0 Andesite: - massive; dark green; hard; medium grained magnetic gabbroic rock grading to a fine grained gabbro and at approximately 84 ft. to a normal dense andesite with scattered small amygdules filled with calcite, quartz, and/or a black chlorite.
- 155.0 - 174.0 Gabbro: - massive; uniform; dark green; hard; mostly magnetic; breaks clean; first contact definite, second grades into the breccia following.
- 174.0 - 352.0 Destor-Porcupine Fault Zone.  
 174.0 - 216.0 Breccia: a fractured to highly brecciated gabbroic rock cemented with black talc-serpentine; approximately 10% white carbonate seams.  
 216.0 - 255.0 Schistose Breccia Zone: above becomes more schistose and altered until finally from 236 on it is composed of soft, black, magnetite-rich fragments in a matrix of greenish carbonate.  
 226.7 - 229.0 Fault: - several inches of chloritic and talcose mud; 40% white carbonate; slips at 65 deg. to the core.  
 243.0 - 245.5: - 60% of ribbon like seams of quartz,  $\frac{1}{4}$ " wide and up at 30 - 45 deg. to the core; one seam has 5% of chalco;  
 Sample # 1233, ... 0.06 Oz. Au and 0.27 % Cu per ton. over 2.5 ft.  
 255.0 - 321.0: - Quartz Zone: - Ranges from 30% to 100% quartz in mostly altered, silicified gabbro; void of sulphides except where sampled below.  
 255.0 - 259.0: - Altered gabbro; approx 50% qtz. with minor chalso.  
 Sample # 1234 .... 0.01 oz Au per ton over 4.0 ft.  
 259.0 - 263.0: quartz, white to slightly pinkish, partly vuggy; very brittle; a few mineralized chloritic frags; approx 1% chalco.  
 sample # 1235 .... 0.02 oz. Au and 0.72% Cu. per ton over 4.0 ft.  
 321.0 - 344.0 Gabbro: dark blackish to brownish; fine to med. grained; mostly flecked with 5% leucoxene; quite magnetic.  
 344.0 - 352.0: Quartz: - white locally greenish tinged; 15% altered gabbro fragments; odd specks of chalco.

Core specimens at 50, 75, 100, 125, 150, 170, 186, 200, 225, 245,  
 275, 300, and 325 ft.

End of Hole at 352 ft.

Property: Ginn Claim L 512572, Hislop Township  
Location: 1143 ft. south of Con. V-VI line and  
1464 ft. west of Lot 3-4 line.

Bearing: N 40 deg. E. Dip: at collar 45 deg. at 343 ft. 42 deg.

Length: 347 ft.

Drilled by Heath and Sherwood Company Sept 13-17, 1980.

Logged by P. Ginn and G.E. Parsons.

0.0 - 36.0 Overburden

36.0 - 42.0 Breccia, angular to subrounded frags of qtz. and a siliceous green rock intermixed with andesite.

42.0-- 203.5 Andesite, dark green; fine grained with scattered zones of small amygdules.  
201.5-203.5 black chlorite, magnetite. 2% pyrite plus chalcopryrite in flow breccia.  
Sample #1237 4.1 oz. Au and 0.30% Cu over 2 ft.

203.5 -246.0 Gabbro ?: dark green; varies from fine grained andesitic type to medium grained gabbro; magnetic.  
237 -238.5 Fault; 1 ft. of light green talcose-chloritic mud;  $\frac{1}{2}$  ft. of white carbonate.

246.0-347.0 Destor Porcupine Fault Zone: a mix of a soft, black, talcose and generally fragmented rock and a hard variously altered gabbroic rock.  
268.0-279.3: gabbro with 50% a clotty dense pink felsitic material with up to 3% chalcopryrite; sample #1238 0.38oz. Au and 0.83% Cu/ 2.3'.  
277.8-279.2: 7" qtz. with 3% chalcopryrite; sample #1239, 0.17oz. Au and 0.84% Cu over 1.4 ft.  
329.0-330.0: Fault; 4" of soft mud; some lips at 40 deg. to the core.  
332 Fault:  $\frac{1}{2}$ " of mud; slips at 60 deg. to the core.

Core specimens (12) at 50, 74, 100, 125, 150, 175, 198, 225, 250, 275, 300 and 325 ft.

END OF HOLE 347 ft.

