



42A09SW0276 17 HISLOP

010

DIAMOND DRILLING

TOWNSHIP: HISLOP

REPORT No.: 17

WORK PERFORMED BY: A. PETER GINN

<u>CLAIM No.</u>	<u>HOLE No.</u>	<u>FOOTAGE</u>	<u>DATE</u>	<u>NOTE</u>
L 512570	79-12	285.5	Nov./79	(1)
L 512571	79-11	183.0	Oct./79	(1)
L 512568	79-8	134.0	Oct./79	(1)
Lot 4 , Con 4	80-19	297.0	May/80	(2)
Lot 512569	80-29	717.0	Apr./80	(2)

NOTES: (1) # 287 & 288 - 79  
(2) # 114-80

Hislop Twp.

A. Peter GILIN

# 287 & 288

CON. V

LOT 3

LOT 5

LOT 4

CLAIM  
L 512572

CLAIM  
L 512573

1111.0'

DD  
79-12

DD  
79-13

2279-

1435'

CON. V

CLAIM  
L 512570

CLAIM  
L 512571



LOCATION SKETCH OF  
DRILL HOLE: DDH 79-12 & 79-13  
LOCATED ON CL: L 512570  
N 1/2 LOT 4 CON. V  
HISLOP TWP.  
SCALE: 1 IN. = 500 FT.

# DIAMOND DRILL RECORD

PROPERTY GIMM CLAIMS

HOLE NO. 79-12

SHEET NUMBER 1

SECTION FROM 22 Post TO 5th intersection of lines  
 DATUM L-512768 <sup>OR</sup> LOT LINE BETWEEN 3 AND 4  
~~CON. LINE BETWEEN 4 AND 5~~

STARTED Nov-2/79

LATITUDE 39405 N

BEARING S-36 1/2 W

COMPLETED Nov-6/79

DEPARTURE 14+40 W

DIP -45°

ULTIMATE DEPTH 285.5

ELEVATION ~~CR PLATE~~

PROPOSED DEPTH 500'

DEPTH FEET	FORMATION	SAMPLE NO.	WIDTH OF SAMPLE	GOLD \$	SLUDGE GOLD \$
0-42.0	CASING				
42.0-100	GABBRO: MASSIVE, DARK GREEN TO BLACK MEDIUM GRAINED, MAGNETIC ROCK.				
100-154	DIORITE: THE PREVIOUSLY DESCRIBED GABBRO CHANGES INTO ONE WHERE THERE IS MORE FELDSPAR. THE BLACK HORNBLENDE (OR PYROXENE) ARE PROMINANT AGAINST THE DARK GROUND OF GREEN FELDSPAR. THIS ROCK IS ONLY SLIGHTLY OR NON-MAGNETIC. IN THE LAST 20' ARE A FEW SMALL PATCHES OF PINK INCLUSIONS AND A FEW NARROW BARREN LOOKING STRINGERS OF QUARTZ.				
154-285.5	PILLOW LAVA AT ABOUT 154 THE ROCK BECOMES FINER GRAINED. IT IS STILL MEDIUM TO DARK GREEN IN COLOUR AND HAS FLOW STRUCTURES, I.E. PILLOW LAVA BRECCIATED FLOWERS, FLOWERS AND CURVES.				

DRILLED BY WORTH AND SHERWOOD CO. LTD.

SIGNED [Signature]



LOT 5

LOT 4

CON. VI  
LOT 3

CLAIM  
L 512572

CLAIM  
L 512573

1748'

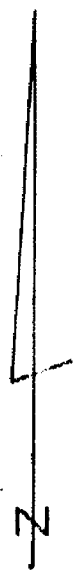
CLAIM  
L 512570

DDH  
79-11

CLAIM  
L 512571

792'

CON. V



LOCATION SKETCH OF  
DRILL HOLE: DDH 79-11  
LOCATED ON CL: L 512571  
N<sup>1</sup>/<sub>2</sub> LOT 4 CON. V  
HISLOP TWP.  
SCALE: 1" = 500 FT.

# DIAMOND DRILL RECORD

PROPERTY GIMN CLAIMS L-512571 HOLE NO. 79-11

SHEET NUMBER 1

SECTION FROM \_\_\_\_\_ TO \_\_\_\_\_

STARTED Oct. 31 - 79

LATITUDE 35° 57' N.

DATUM L-512568 <sup>1/2 Post</sup> } INTERSECTION OF  
 } LOT LINE BETWEEN 3 AND 4  
 } CAN LINE BETWEEN 10 AND 11

COMPLETED Nov 2, 1979

DEPARTURE 7+92W

BEARING S 30° W.

ULTIMATE DEPTH 183.0

ELEVATION \_\_\_\_\_

DIP -52°

PROPOSED DEPTH \_\_\_\_\_

DEPTH FEET	FORMATION	SAMPLE NO.	WIDTH OF SAMPLE	GOLD \$	SLUDGE GOLD \$
0 - 30.0	CASING				
30.0 - 36.0	BROWN LAVA: FINE TO MED GRAINED MASSIVE DARK GREENISH BROWN COLOURED ROCK. 15% QTZ CARTS STRINGERS 30° - 65° TO THE CORE. VERY LITTLE LIM.				
6.0 - 61.0	LIGHT GREEN LAVA: THE PREVIOUS ROCK GRADE THROUGH ABOUT 1' TO ONE OF PALE GREEN COLOUR. - THERE ARE 60% QTZ-CARTS STRINGERS AT 0° - 60° TO THE CORE. RUSTY SEAMS AT 38.5', 57' AND 60.5'				
61.0 - 66.0	FELSITIZED LAVA: THE PREVIOUSLY DESCRIBED PALE GREEN ROCK, WITH VARYING DEGREES OF ALTERATION (USUALLY STARTING ALONG SEAMS) IS CHANGED TO A PALE PINK COLOUR. THIS ROCK CONTAINS A QUARTZITE AMT OF PYRITE USUALLY CONCENTRATED ALONG SEAMS OR SMALL FRACTURES. A FEW IRREGULARLY ORIENTED QTZ STRINGERS.	S621	5.0'		

# DIAMOND DRILL RECORD

 PROPERTY MINA CLAIM
L

 HOLE NO. 79-11

 SHEET NUMBER 2

SECTION FROM \_\_\_\_\_ TO \_\_\_\_\_

STARTED \_\_\_\_\_

LATITUDE \_\_\_\_\_

DATUM \_\_\_\_\_

COMPLETED \_\_\_\_\_

DEPARTURE \_\_\_\_\_

BEARING \_\_\_\_\_

ULTIMATE DEPTH \_\_\_\_\_

ELEVATION \_\_\_\_\_

DIP \_\_\_\_\_

PROPOSED DEPTH \_\_\_\_\_

DEPTH FEET	FORMATION	SAMPLE NO.	WIDTH OF SAMPLE	GOLD \$	SLUDGE GOLD \$
66-72.0	FELSITIZED LAVA AS BEFORE RUSTY SECTION 68-72	5622	6.0		
72.0-77.0	FELSITIZED LAVA AS BEFORE RUSTY 73.5-76	5623	5.0		
77.0-82.0	FELSITIZED LAVA AS BEFORE	5624	5.0		
82.0-87.0	FELSITIZED LAVA AS BEFORE	5625	5.0		
87.0-90.2	FELSITIZED LAVA AS BEFORE NOT AS MUCH THIN. 1/2 FT QTZ CHIPS BRECCIA WITH INCLUDED <sup>LT</sup> GREEN LAVA FILICITENES AT END OF SECTION	5626	3.2		
90.2-93.5	FELSITIZED LAVA: MUCH MORE MASSIVE AND MAY BE INTENSIVE. NOT A THIN TH.				
93.5-113.0	LIGHT GREEN LAVA: AS PREVIOUSLY DESCR. (WITH SOME FELSITIZED SECTIONS. ABOUT 10% QTZ CHIPS STRINGS. THE LAST 3' HITS GRADEN INTO A SLIGHTLY PINK ROCK. AT 112' THERE IS A UG <sup>with included</sup> QTZ XLS				

DRILLED BY \_\_\_\_\_

SIGNED \_\_\_\_\_

# DIAMOND DRILL RECORD

PROPERTY GINN CLAIMS HOLE NO. 79-11

SHEET NUMBER 3 SECTION FROM \_\_\_\_\_ TO \_\_\_\_\_ STARTED \_\_\_\_\_  
 LATITUDE \_\_\_\_\_ DATUM \_\_\_\_\_ COMPLETED \_\_\_\_\_  
 DEPARTURE \_\_\_\_\_ BEARING \_\_\_\_\_ ULTIMATE DEPTH \_\_\_\_\_  
 ELEVATION \_\_\_\_\_ DIP \_\_\_\_\_ PROPOSED DEPTH \_\_\_\_\_

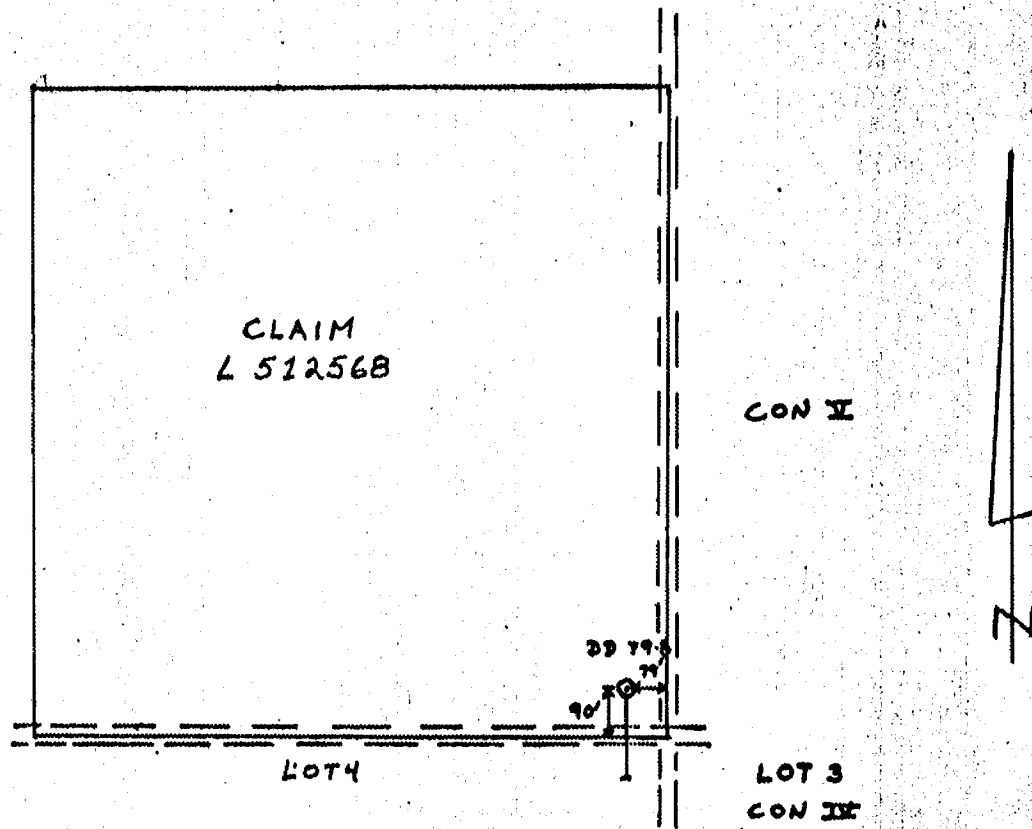
DEPTH FEET	FORMATION	SAMPLE NO.	WIDTH OF SAMPLE	GOLD \$	SLUDGE GOLD \$
13.8 - 181.0	<p><del>ULTRABASIC</del> DARK GREEN LAVA; DARK GREEN, ALMOST BLACK (SAMPLES 79-11-G1, G2). BRECCIATED AND Zr-CEMENTED WITH LIGHTER GREEN MINERAL. 50% QTZ - CRYS - 3' WIDE BARREN WHITE VEIN 20°-60° AT END OF SECTION</p>				
181.0 - 183.0	<p style="text-align: right;">AND HARD</p> <p>DARK GREEN LAVA; - MORE MASSIVE THAN PREVIOUS SECTION, IT IS FINE GRAINED AND HAS A FEW SEAMS <sup>CONTAINING</sup> MINOR PYRITE. THERE ARE SOME BARREN-LOOKING WHITE QTZ VEINS 60° TO THE CORE AT NEAR END OF SECTION</p>				
	183.0 END OF HOLE				

DRILLED BY \_\_\_\_\_

SIGNED \_\_\_\_\_



DDH 79-8



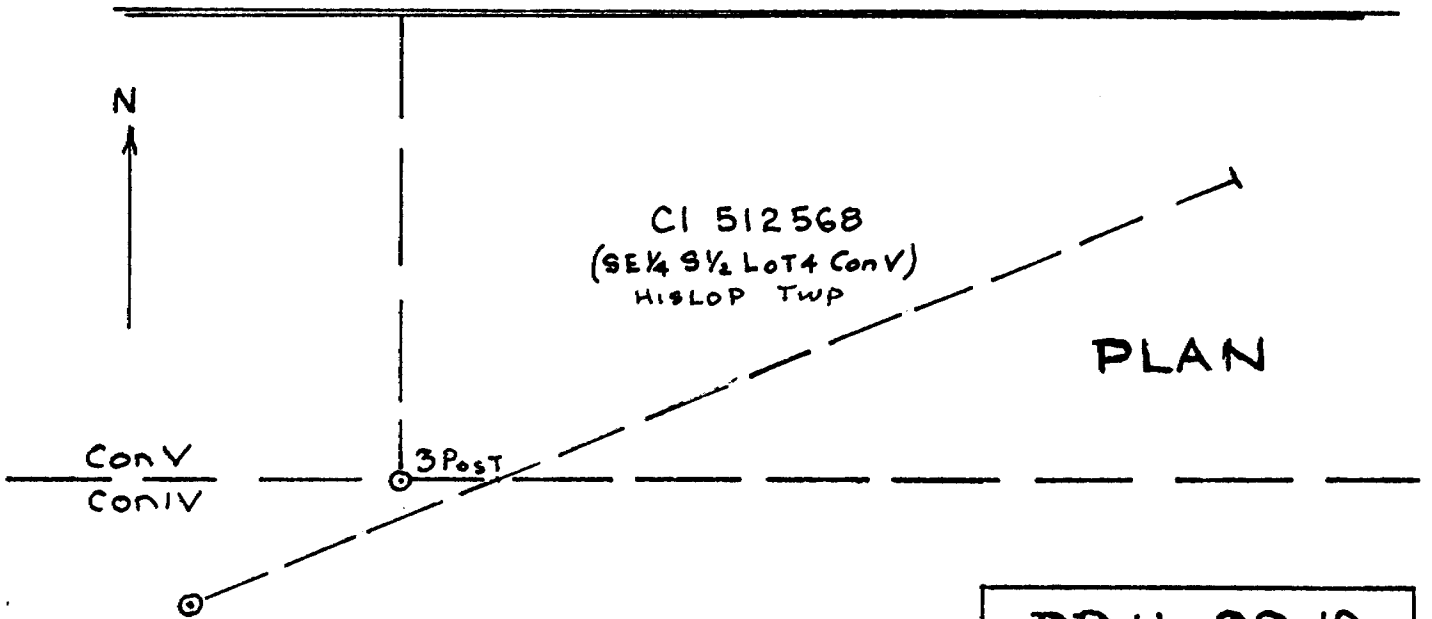
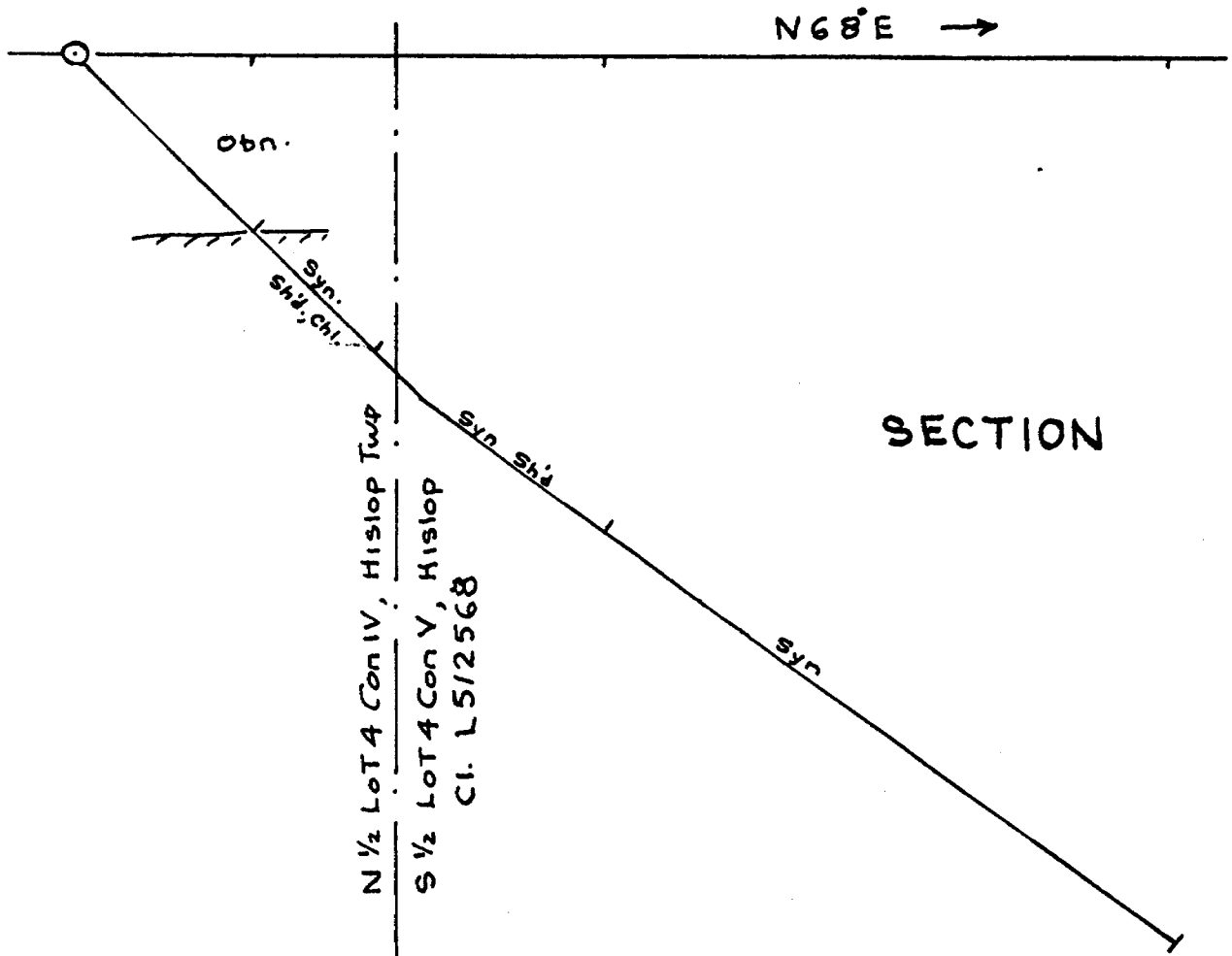
LOCATION SKETCH OF  
DRILL HOLE: DDH 79-8  
LOCATED ON CL.: L 512568  
S.E. 1/4 S 1/2 LOT 4 CON. V  
HISLOP TWP.  
SCALE: 1" = 400 FT



P1

Property: N $\frac{1}{2}$  Lot 4 Cont, Hislop Twp Hole No 80-19 Depth 297  
 Lat. 0+25S Brg N68°E started 13 Mar Compl 15 Mar 80  
 Dep. 13+63W Dip 45° Drilled by Heath & Sherwood  
 Datum NE corner of Lot @ 200 38° Logged by A. P. Paine

Footage	Description	Sample No	Wt. %	Oz Au/ton
0-52	Casing (removed)			
52-150	<u>Syenite</u> in shear-fault zone			
	52-60 fairly dark; granulated; ferro-magn to black chlorite; hairline seams of yellowish mylonitic material			
	60-85 more foliated 62°; hair-line seams black chlorite; locally very fragmented			
	85-88.5 foliated; rich in black chlorite			
	88.5-89 light apple green colour			
	89-90 5" bluish grey gtz breccia-vein; 3% pyrite	063	1.0	.002
	90-122 fairly good syenite; dark to olive green to reddish; thin seams of black chlorite give it a foliated texture; bleached hornblende phenocr; becomes lighter down hole			
	122-150 mostly light coloured with zones of chalk white to blue grey mylonitic material in foliated shear zones; no pyrite.			
	141.5-142.5 some patches of blue grey mineralization; some black frags; 10% pyrite; 50°	064	1.0	.005
150-205	<u>Syenite</u> rather uniform; massive; med. pink to olive green			
	at 171 6" of barren gtz-fels breccia			
	at 204 1/2" barren gtz-Carb; string slip at 45°			
	207-208			
	at 207 1/2" seam of chalc in alt's pink area	069	2.0	.002
205-217.5	<u>Syenite</u> rather blotchy and not as uniform			
217.5-224	<u>Syenite</u> light pink, coarse feldspathic areas with some scattered pyrite			
224-297	<u>Syenite</u> good type; massive; bleached hornblende phenocr; Spec 296'			
End				
	<u>Sludges</u> all assay 0.002 or less.			



DD.H. 80-19  
HISLOP TWP, ONT.  
Scale 1 in = 40 ft.

Property: Ginn; Cl. L512569, Hislop Twp

Hole No 80-29 Depth 717

Lat. 15+25N

Brg. N45°E

Started 8 Apr Camp 7 Apr

Dep. 8+70W

Dip 45°

Drilled by Heath S. Sherwood

Datum: 0+00 NE Corner

@ 407 43°

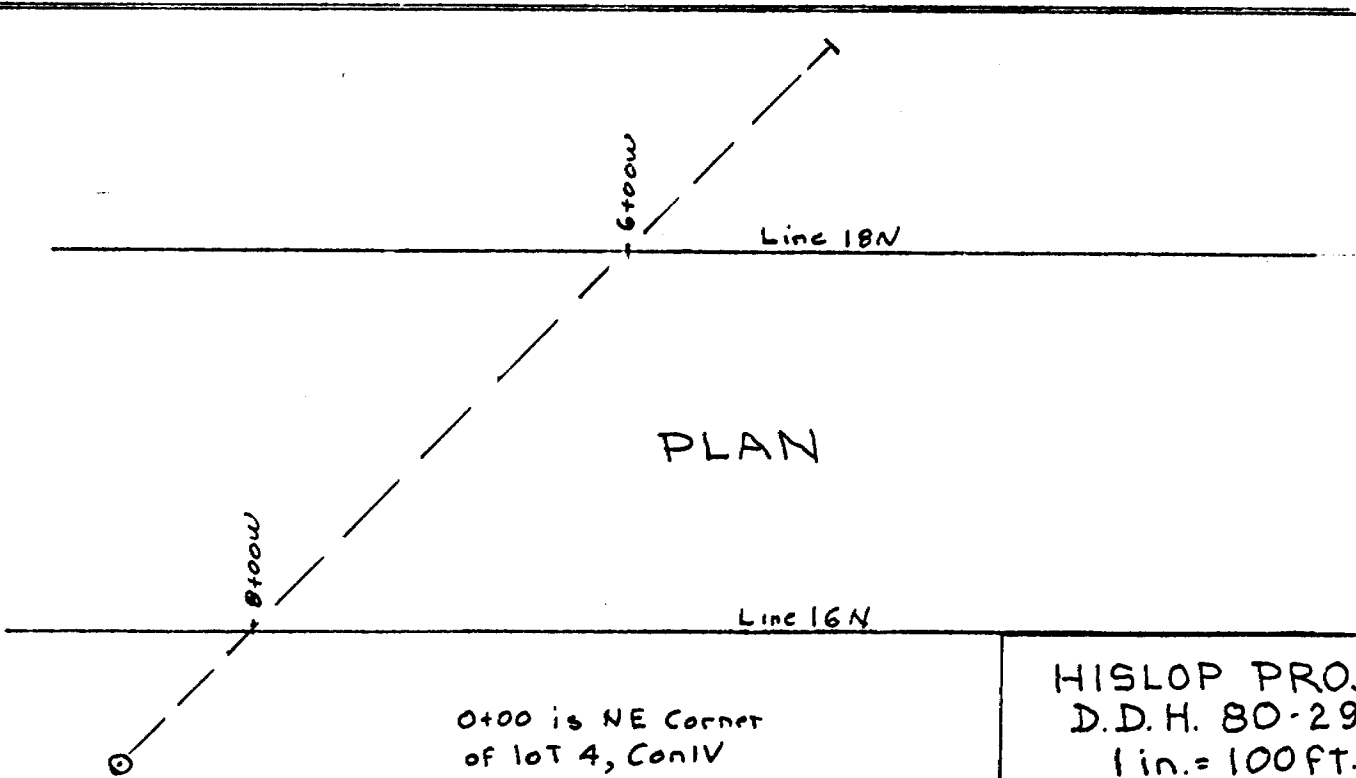
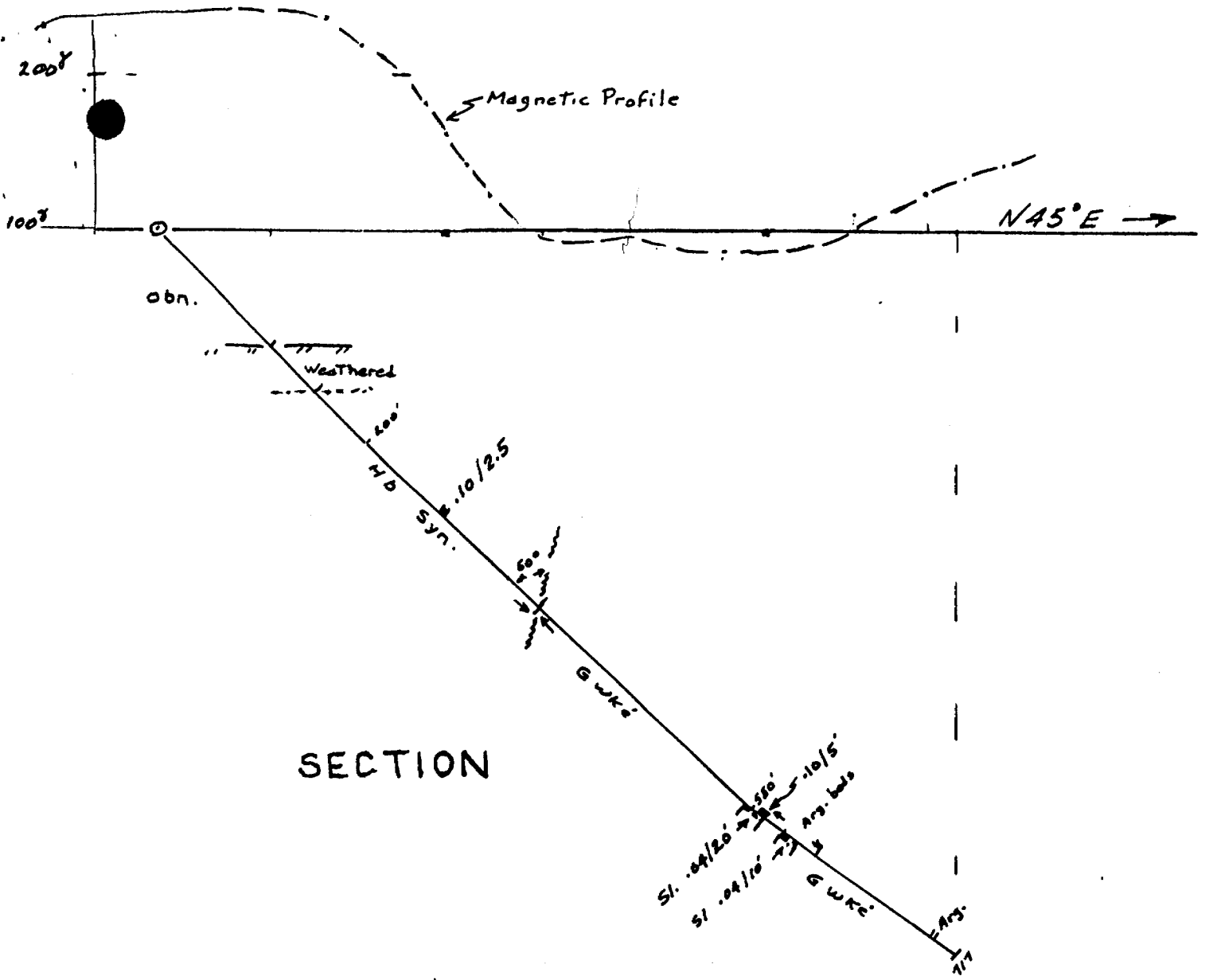
Logged by P. S. Ginn

Lot 4 Con IV Hislop

R 700 35°

Footage	Description	Sample No	Width	Oz Au/Ton
0-108	Casing (removed)			
108-356	Hornblende Syenite med grained; equigranular; pink feldspar and hornblende; massive; uniform; scattered magnetite 108-149 for most part highly weathered and rusty 204.0-205.5 pyrite (10%); several gtz. str; narrow breccia zone 232.5-236.0 ditto 266-268.8 pyrite (10%); tight moly-sulph. slip 311.5-315 as 2977 327.9-329.6 bleached; brecciated 80° to core; recemented with gtz 334.5-336.5 bleached; 9" gtz. and breccia; 75° to core 354-356 fault on contact at 65°; 1/4" mud-sulphide slip; some very magnetitic cherting; very little alteration	2977 2978 2979 2980 2981 2982	1.5 3.5 2.8 3.5 1.7 2.0	0.01 0.002 0.10 0.01 0.002 0.002
356-559	Greywacke 356-452 light grey green with scattered pinkish altered zones; locally broken; dense to fine 375-376.5 some massive alteration; bluish gtz, moly and little chert over 3" ± at 80° 452-559 very uniform; light grey green; massive; fine bedding; 45° to core; beds grade fine to co (dark to light) down hole re Tops South 553-556 greenish grey; some silicification; fractured pyrite on fractures. 556-558 as before; V.G.? in bluish gtz vein; other half of core 558-561 silicified; fractured; fine pyrite; last two ft black.	2983	1.5	0.002
559-602	Greywacke variable; greenish grey to black; locally bedded 561-564.5 as sample 2987 but not as much fracturing; trace pyrite; 50% black.	2984 2985 2986 2987 2988	3.0 2.0 2.0 3.0 3.5	0.005 0.30 0.11 0.03 .005

Footage	Description	Sample No	Width	O2 Au/Ton
	564.5 - 567 greenish grey to black; bedding 45° to 60°; massive; @ 567' a bed grades light to dark (ce to fine) down hole ie Tops North.	2989	2.5	.002
	573 - 586 scattered dark bands or beds			
	586 - 589 scattered small light angular clasts in a grey green fine matrix			
	589 - 597 a few dark bands			
	597 - 599 very black; argillitic; banded at 40°; not hard			
602-717	<u>Argillite</u> variable but tends to be greenish grey; massive			
End.	617-637 rather cherty; few dark sections			
	637-656 few dark sections			
	656-676 few cherty sections			
	676-697 variable light to dark (blackish) but no conclusive argillite			
	@ 682 some brecciation, silicification and pyrite			
	697-701 dense, black, <u>argillite</u> ; 20° to 40°			
	701 - 717 pale greenish grey; no bedding			
	<u>Sludge Assays</u>			
	547 - 557	0.04		
	557 - 567	0.04		
	567 - 577	0.002		
	577 - 587	0.04		
	587 - 597	0.002		
	597 - 607	0.02		
	all other sludge assays 0.002 or less			



HISLOP PROJ.  
 D.D.H. 80-29  
 1 in. = 100 FT.