

122112

SWASTIKA LAI

P.O. BOX 10, S
TELEP
ANALYTICAL CHEM



010

Certificate of Analysis

MEAP KL-125

48035

Date: July 11 1979

July 6 1979 7 Samples of Core, Ore

by G.E. Parsons Ltd., c/o Peter Ginn, Matheson, Ontario

SAMPLE NO.	GOLD Oz./ton
001	0.002
002	0.01
003	0.005
004	Nil
005	0.005
006	0.002
007	0.002

7 Samples from
Ginn - claim
7 x 7⁰⁰ = 49.00
JMM

check samples from
Hevada Exploration core. ?

Per G. Lebel
G. Lebel - Manager





SWASTIKA LABORATORIES LIMITED

P.O. BOX 10, SWASTIKA, ONTARIO POK 1T0

TELEPHONE: (705) 642-3244

ANALYTICAL CHEMISTS • ASSAYERS • CONSULTANTS

Certificate of Analysis

Certificate No. 48566

Date: November 5 1979

Received Oct. 31/79 23 Samples of D.D. Sludges

Submitted by G. E. Parsons Ltd., Toronto, Ontario

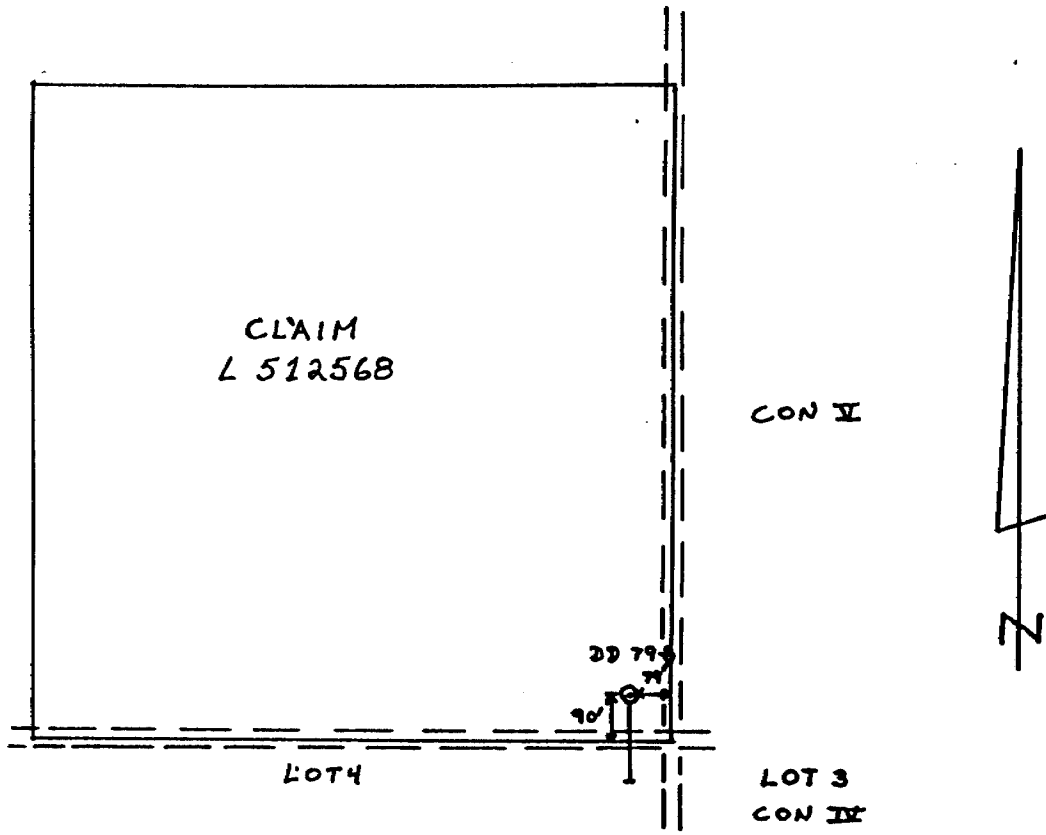
SAMPLE NO.	GOLD Oz./ton
<u>HOLE #8</u>	
10-20	N11
20-27	0.002
27-37	0.002
37-47	N11
47-57	0.002
57-67	N11
67-77	0.002
77-86	0.002
86-96	N11
96-106	0.01
106-116	0.002
116-126	N11
126-136	0.01
136-147	0.002
147-157	0.002
157-166	0.01
166-176	N11
176-186	0.002
186-196	0.002
196-206	0.01
206-216	0.002
216-226	0.005
226-232	0.002

Sludges. O.K

*Hole 8 gun ch
(log shows no assays)
on gun claims
S/B*

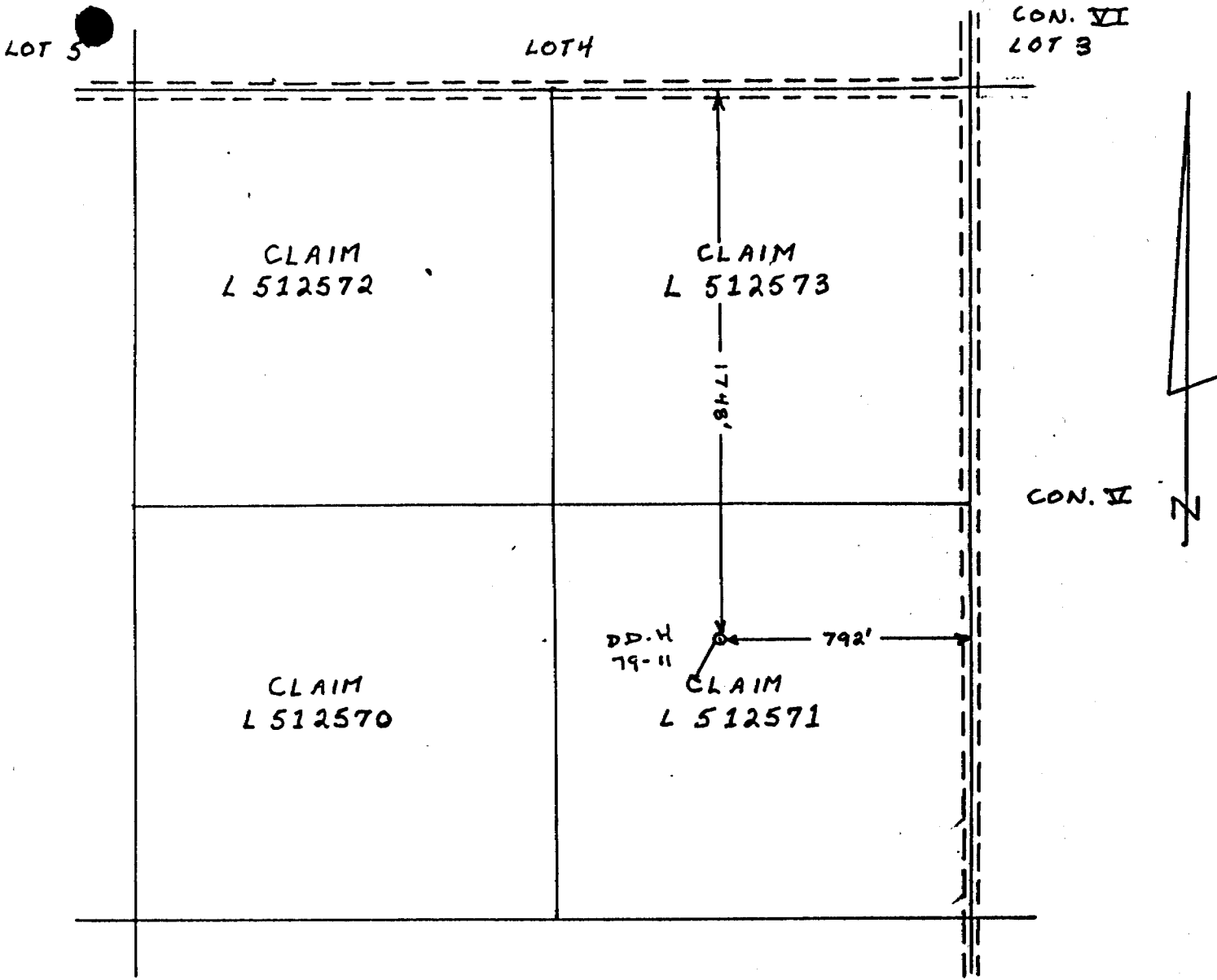
*13 samples in
gun-claim
13 x .7⁰⁰ = 91⁰⁰ OK.*

Per G. Lebel
G. Lebel - Manager



LOCATION SKETCH OF
 DRILL HOLE: DDH 79-8
 LOCATED ON CL.: L 512568
 S.E. $\frac{1}{4}$ S. $\frac{1}{2}$ LOT 4 CON. V
 HISLOP TWP.
 SCALE: 1" = 400 FT

William J. Miller
 Dec 4/79



LOCATION SKETCH OF
 DRILL HOLE: DDH 79-11
 LOCATED ON CL.: L 512571
 N $\frac{1}{2}$ LOT 4 CON. V
 HISLOP TWP.
 SCALE: 1" = 500 FT.

W. J. Smith
 Dec 4/79

DIAMOND DRILL RECORD

(6 samples)

PROPERTY GIMN CLAIMS 1-512571 HOLE NO. 79-11

SHEET NUMBER 1

SECTION FROM _____ TO _____

STARTED Oct. 31 - 79

LATITUDE 35° 57' N.

DATUM L-512568 ^{#2 Post} } ON ^{INTERSECTION OF} LOT LINE BETWEEN 3 AND 4
CAN. LINA. DEPT. 10 AND 11

COMPLETED Nov. 2, 1979.

DEPARTURE 7+92W

BEARING S 30° W.

ULTIMATE DEPTH 183.0

ELEVATION _____

DIP -52°

PROPOSED DEPTH _____

DEPTH FEET	FORMATION	SAMPLE NO.	WIDTH OF SAMPLE	GOLD g	SLUDGE GOLD g
0 - 30.0	CASING				
30.0 - 36.0	BROWN LAVA; FINE TO MED GRAINED. MASSIVE DARK GREENISH BROWN COLOURED ROCK. 15% QTZ CEMENTS STRINGERS 30° - 65° TO THE CORE. VERY LITTLE MIN.				
36.0 - 61.0	LIGHT GREEN LAVA; THE PREVIOUS ROCK GRADES THROUGH ABOUT 1' TO ONE OF PALE GREEN COLOUR. - THERE ARE 60% QTZ- CEMENT STRINGERS AT 0° - 60° TO THE CORE. RUSTY SEAMS AT 38.5', 57' AND 60.5'				
61.0 - 66.0	FELSITIZED LAVA; THE PREVIOUSLY DESCRIBED PALE GREEN ROCK, WITH VARYING DEGREES OF ALTERATION (USUALLY STARTING ALONG SEAMS) IS CHANGED TO A PALE PINK COLOUR. THIS ROCK CONTAINS A MODERATE AMT OF PYRITE USUALLY CONCENTRATED ALONG SEAMS OR SMALL FRACTURES. A FEW IRREGULARLY ORIENTED QTZ STRINGERS	5621	5.0'	0.005	

DIAMOND DRILL RECORD

PROPERTY Green Camp. L. HOLE NO. 79-11

SHEET NUMBER 2 SECTION FROM _____ TO _____ STARTED _____
 LATITUDE _____ DATUM _____ COMPLETED _____
 DEPARTURE _____ BEARING _____ ULTIMATE DEPTH _____
 ELEVATION _____ DIP _____ PROPOSED DEPTH _____

DEPTH FEET	FORMATION	SAMPLE NO.	WIDTH OF SAMPLE	GOLD %	SLUDGE GOLD %
66-72.0	FELSITIZED LIGNITE AS BEFORE RUSTY SECTION CB 72	5622	6.0	0.002	
72.0-77.0	FELSITIZED LIGNITE AS BEFORE RUSTY 73.5-76.0	5623	5.0	0.005	
77.0-82.0	FELSITIZED LIGNITE AS BEFORE	5624	5.0	0.002	
82.0-87.0	FELSITIZED LIGNITE AS BEFORE	5625	5.0	0.005	
87.0-90.2	FELSITIZED LIGNITE AS BEFORE NOT AS MUCH W.M., 1 1/2 FT QTZ CARB BRECCIA WITH INCLUDED GREEN LIGNITE FRAGMENTS AT END OF SECTION	5626	3.2	0.002	
90.2-93.5	FELSITIZED LIGNITE: MUCH MORE MASSIVE. AND MAY BE INTENSIVE, NOT A THICK M.				
93.5-113.0	LIGHT GREEN LIGNITE; AS PREVIOUSLY DESCR. (WITH SOME FELSITIZED SECTIONS, ABOUT 10% QTZ CARB STIPPLES, THE LAST 3' HITS GRADEN INTO A SMOOTH PINK ROCK. AT 112' THERE IS A UG ^{AND IN INTERV.} _{WITH QTZ XLS}				

DRILLED BY _____

SIGNED _____

[Handwritten signature]

DIAMOND DRILL RECORD

PROPERTY GINN CLAIMS

HOLE NO. 79-11

SHEET NUMBER 3

SECTION FROM _____ TO _____

STARTED _____

LATITUDE _____

DATUM _____

COMPLETED _____

DEPARTURE _____

BEARING _____

ULTIMATE DEPTH _____

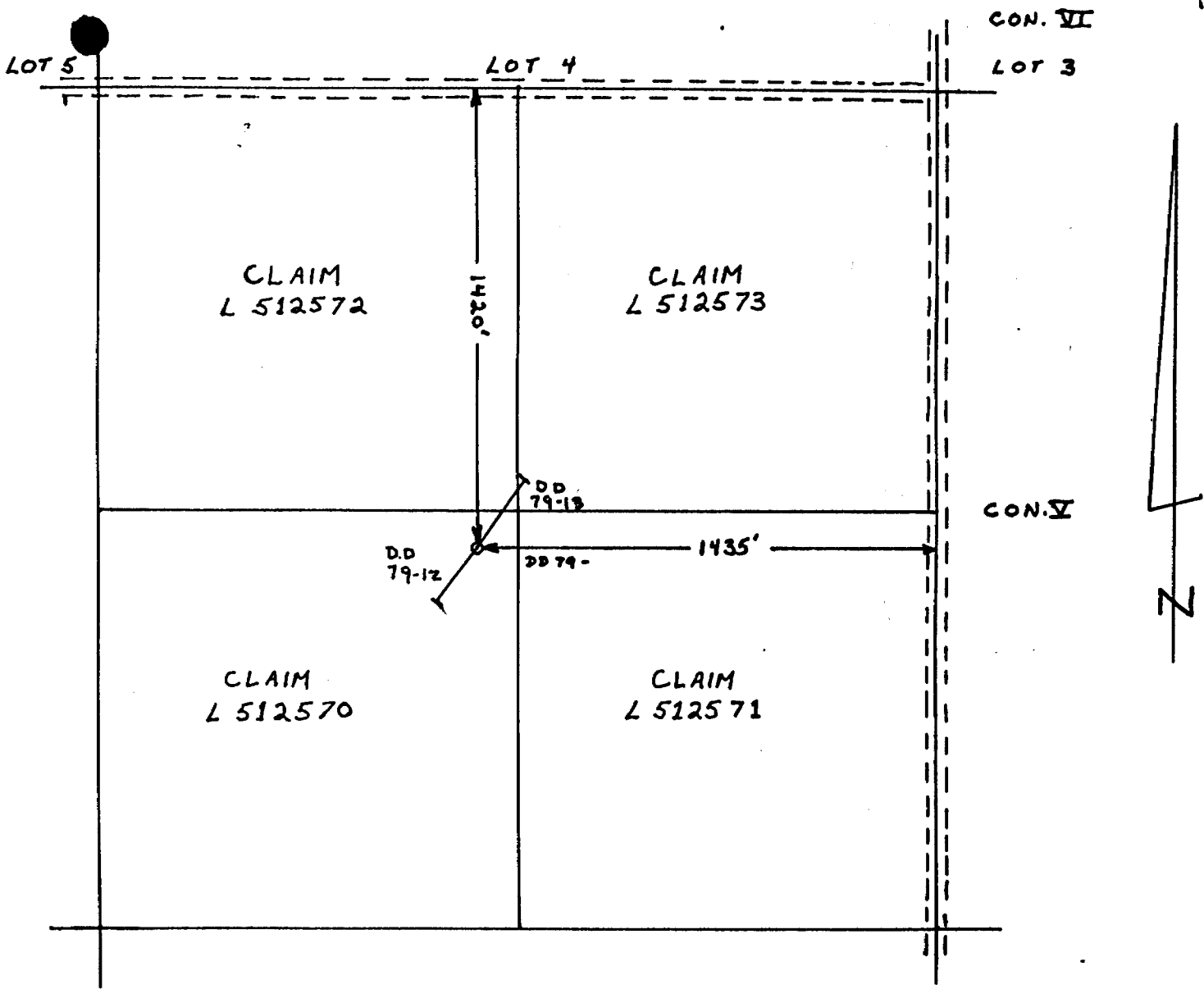
ELEVATION _____

DIP _____

PROPOSED DEPTH _____

DEPTH FEET	FORMATION	SAMPLE NO.	WIDTH OF SAMPLE	GOL. 'S	SLUDGE GOLD \$
13.0 - 181.0	<p>ULTRABASIC DARK GREEN, ALMOST BLACK (SAMPLES 79-11-G1, G2). BRECCIATED AND RE-CEMENTED WITH LIGHTER GREEN MINERAL. 50% QTZ - CARB - 3' WIDE BARREN WHITE VEIN 20°-60° AT END OF SECTION</p>				
181.0 - 183.0	<p>AND HARD DARK GREEN LAVA; - MORE MASSIVE THAN PREVIOUS SECTION. IT IS FINE GRAINED AND HAS A FEW SEAMS ^{CONTAINING} MINOR PYRITE. THERE ARE SOME BARREN-LOOKING WHITE QTZ VEINS 60° TO THE CORE AT NEAR END OF SECTION</p>				
	183.0 END OF HOLE				

[Handwritten Signature]



LOCATION SKETCH OF
 DRILL HOLE: DDH 79-12 & 79-13
 LOCATED ON CL: L 512570
 N $\frac{1}{2}$ LOT 4 CON. V
 HISLOP TWP.
 SCALE: 1" = 500 FT.

W. J. [Signature]
 Dec 4/79

DIAMOND DRILL RECORD

0 Samples

PROPERTY GAM CLAIMS

HOLE NO. 79-12

SHEET NUMBER 1

SECTION FROM _____ TO _____

STARTED Nov-2/79

LATITUDE 39405 N

DATUM L-512568 } INTERSECTION OF LINES
2 POST } OR LOT LINE BETWEEN 3 AND 4
CON. LINE BETWEEN 2 AND 3

COMPLETED Nov-6/79

DEPARTURE 14 + 40 W.

BEARING S-36 1/2 W.

ULTIMATE DEPTH 285.5

ELEVATION _____

DIP -45°

PROPOSED DEPTH 500'

DEPTH FEET	FORMATION	SAMPLE NO.	WIDTH OF SAMPLE	GOLD g	SLUDGE GOLD g
0 - 42.0	CASING				
42.0 - 100	GABBRO: MASSIVE, DARK GREEN TO BLACK MEDIUM GRAINED, MAGNETIC ROCK.				
100 - 154	DIOBASE: THE PREVIOUSLY DESCRIBED GABBRO CHANGES INTO ONE WHERE THERE IS MORE FELDSPAR. THE BLACK HORNBLENDE (OR PYROXENE) ARE PROMINENT AGAINST THE BLACK GROUND OF GREEN FELDSPAR. THIS ROCK IS ONLY SLIGHTLY OR NON-MAGNETIC. IN THE LAST 20' ARE A FEW SMALL PATCHES OF PINK INCLUSIONS AND A FEW NARROW BARREN LOOKING STRINGERS OF QUARTZ.				
154 - 285.5	PILLOW LAVA AT ABOUT 154 THE ROCK BECOMES FINER GRAINED & STILL MEDIUM TO DARK GREEN IN COLOUR ^{BUT} AND HAS FLOW STRUCTURES, I.E. PILLOW LAVA BRECCIATED FLOWERS, FLOWERS AND CURS.				

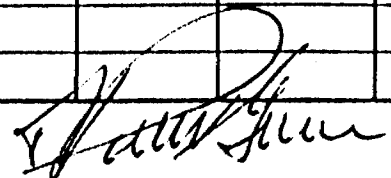
[Handwritten Signature]

DIAMOND DRILL RECORD

PROPERTY SLIMM HOLE NO. 79-12

SHEET NUMBER 2 SECTION FROM _____ TO _____ STARTED _____
 LATITUDE _____ DATUM _____ COMPLETED _____
 DEPARTURE _____ BEARING _____ ULTIMATE DEPTH _____
 ELEVATION _____ DIP _____ PROPOSED DEPTH _____

DEPTH FEET	FORMATION	SAMPLE NO.	WIDTH OF SAMPLE	GOLD g	SLUDGE GOLD g
285.5 (cont)	THERE IS A MODERATE AMOUNT OF PYRRHOTITE FILLING CRACKS IN THE P.L. BRECCIA. FRESH ABOUT 180' - 185 190' THERE ARE A FEW BUBBLES LOOKING LIKE UREANETS AT 30" - 60" TO THE CORE				
	END OF HOLE 285.5'				
	FOR SOME REASON HOLE CHANGED DIRECTION SO THAT OVER TWO OR THREE DAYS 12-14 RODS WERE BROKEN. RODS WOULD NOT DROP BY GRAVITY DOWN THE HOLE.				


 SIGNED _____

DIAMOND DRILL RECORD

12 samples

PROPERTY GINN CLAIMS

HOLE NO. 79-13

SHEET NUMBER 1

SECTION FROM _____ TO _____

STARTED Nov 6

LATITUDE 39+05 N

DATUM 2 Post 512508 } or } INTERSECTION OF LINES
 LOT LINE BETWEEN 344
 CON. LINE BETWEEN 1465

COMPLETED Nov 13

DEPARTURE 14+40 W

BEARING N 36 1/2° E

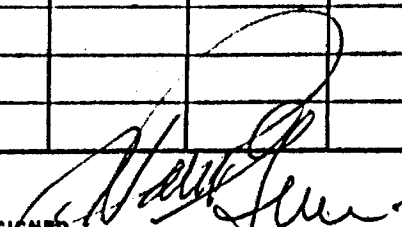
ULTIMATE DEPTH 527' 557'

ELEVATION _____

DIP - 45°

PROPOSED DEPTH _____

DEPTH FEET	FORMATION	SAMPLE NO.	WIDTH OF SAMPLE	GOLD \$	SLUDGE GOLD \$
0 - 30.0'	CASING.				
	Diorite: As described in Hole 79-12				
30.0 - 226.8	Granite - massive medium textured fresh looking. There are some large conspicuous xls of hornblende (prow) spread through the rock. There are a few spots filled with epidote and a few Qtz filled stringers. Along a few fractures some felsitization has taken place. At 226.8 there is an abrupt contact. The granite ^{diorite} there is slightly finer grained at the contact.				
226.8 - 233.0	Dark green (basic) lava: This rock is finer grained and sheared with alternate patches of green and black material. There are some Qtz-cryst stringers. At 228.12 is a 1" section of fairly massive pyrite.				


 SIGNED _____

DIAMOND DRILL RECORD

PROPERTY GINN CLAIMS

HOLE NO. 79-13

SHEET NUMBER 2

SECTION FROM _____ TO _____

STARTED _____

LATITUDE _____

DATUM _____

COMPLETED _____

DEPARTURE _____

BEARING _____

ULTIMATE DEPTH _____

ELEVATION _____

DIP _____

PROPOSED DEPTH _____

DEPTH FEET	FORMATION	SAMPLE NO.	WIDTH OF SAMPLE	GOLD \$	SLUDGE GOLD \$
2330-2710	DIORITE. (LAMPROPHYRE) NOT UNLIKE THE PREVIOUS SECTION ABOVE TERTIARY GATTSIRO BUT FINER GRAINED AND NOT AS FRESH LOOKING. THERE IS A FINE GRAINED CONTACT WITH THE FOLLOWING BASIC LAUA.				
2710-3440	DARK GREEN (BASIC) LAUA AS PREVIOUSLY DESCRIBED. THERE ARE A FEW SMALL ISOLATED PATCHES OF PYRITE FROM 317 ON THE ROCK IS MUCH MORE BRECCIATED AND IN MANY PLACE ALTERED TO A CHLORITE SCHIST OR SERPENTINE. (DETOR PORCUPINE FAULT)				
3440-3650	DARK GREEN LAUA - QTZ CRTS. SCHISTOSE AND SERPENTINIZED LAUA IN BEELIE BUT CONTAINING UP TO 50% QTZ-CRTS. 346.1 - 351.1 (DETOR PORCUPINE FAULT).	#023	5.0' SFT.	N.L.	

DIAMOND DRILL RECORD

PROPERTY GINN CLARKE **HOLE NO.** 79-13
SHEET NUMBER 3 **SECTION FROM** _____ **TO** _____ **STARTED** _____
LATITUDE _____ **DATUM** _____ **COMPLETED** _____
DEPARTURE _____ **BEARING** _____ **ULTIMATE DEPTH** _____
ELEVATION _____ **DIP** _____ **PROPOSED DEPTH** _____

DEPTH FEET	FORMATION	SAMPLE NO.	WIDTH OF SAMPLE	GOLD \$	SLUDGE GOLD \$
65.0 - 370.0	Q ₁ TZ VEIN - FEW PORPH. HERE THE ROCK IS THICK MASSIVE WITH 25% Q ₁ TZ WITH INCLUDED FRAGMENTS OF GREY TO PINK ALTERED ROCK WHICH IS TEXTURED PORPHYRY. IN PLACES IN THE Q ₁ TZ IS MODERATE AMTS OF CHALCO AND ^{OR} PYRITE.	024	5.0	0. ⁰⁰⁵	
370.0 - 375.0	Q ₁ TZ VEIN - PORPH. AS BEFORE 15% Q ₁ TZ	025	5.0	0. ⁰⁰⁵	
375.0 - 380.0	Q ₁ TZ VEIN - PORPH AS BEFORE 20% Q ₁ TZ	026	5.0	0. ⁰⁰⁵	
380.0 - 385.0	Q ₁ TZ VEIN - PORPH. AS BEFORE. 50% Q ₁ TZ BRECCIATION. AT 80° TO THE CORE	027	5.0	0. ¹²	
385.0 - 390.0	Q ₁ TZ VEIN - PORPH. AS BEFORE 10% Q ₁ TZ HERE THE PORPH IS LIGHT RED COLOURED AND CHALCO IS MORE ABUNDANT THAN IN EARLIER SECTIONS.	028	5.0	0. ⁰¹	
390.0 - 395.0	Q ₁ TZ VEIN - PORPH. 60% - AS PREV. SECTION.	029	5.0	0. ⁰²	

DIAMOND DRILL RECORD

PROPERTY GINAL CLAIMS HOLE NO. 79-13

SHEET NUMBER 4 SECTION FROM _____ TO _____ STARTED _____
 LATITUDE _____ DATUM _____ COMPLETED _____
 DEPARTURE _____ BEARING _____ ULTIMATE DEPTH _____
 ELEVATION _____ DIP _____ PROPOSED DEPTH _____

DEPTH FEET	FORMATION	SAMPLE NO.	WIDTH OF SAMPLE	GOLD g	SLUDGE GOLD g
395.0 - 400.0	Q ₁₇ Z VEIN-PORPH AS BEFORE 50% Q ₁₇ Z	030	5.0	0.01	
400.0 - 405.0	Q ₁₇ Z VEIN-PORPH AS BEFORE 20% Q ₁₇ Z	031	5.0	0.02	
405.0 - 410.0	Q ₁₇ Z VEIN- DRILLER LAVA- 50% Q ₁₇ Z ^{DRILLER} THE INCLUSIONS ARE NO LONGER RED BUT SILICIFIED PALE GREEN IN COLOR AND ONLY MINOR MINERALIZATION, FAIRLY MASSIVE	032	5.0	0.01	
410.0 - 415.0	Q ₁₇ Z VEIN-LAVA : AS BEFORE. 40% Q ₁₇ Z	033	5.0	0.01	
415.0 - 418.0	Q ₁₇ Z VEIN-LAVA AS BEFORE 15% Q ₁₇ Z	034	3.0	0.01	
418.0 - 461.0	Q ₁₇ Z - LAVA - ^{DRILLER} A FAULT; IN THIS SECTION THE DRILLER GROUND WAS VERY BLOCKY AND THE DRILLER FAILED TO RECOVER AT LEAST 24' OF CORE - WHAT THEY GOT IS RUBBLE & LITTLE DARK RED PORPH SOME MOTTLED-SILICIFIED PALE GREEN LAVA (OR PORPH) AND BARREN LOOKING Q ₁₇ Z-CRYS. WE				

N.M.P., TORONTO-STOCK FORM NO. 501 REV. 12/51

DIDN'T TAKE SAMPLES BUT RELY ON SLUDGES.

DRILLED BY _____

SIGNED _____

[Handwritten Signature]

DIAMOND DRILL RECORD

PROPERTY Giant Claims HOLE NO. 79-13

SHEET NUMBER 5 SECTION FROM _____ TO _____ STARTED _____

LATITUDE _____ DATUM _____ COMPLETED _____

DEPARTURE _____ BEARING _____ ULTIMATE DEPTH _____

ELEVATION _____ DIP _____ PROPOSED DEPTH _____

DEPTH FEET	FORMATION	SAMPLE NO.	WIDTH OF SAMPLE	GOLD g	SLUDGE GOLD g
461.0 - 472.0	QTE VEIN - 80% BARREN LOOKING QTE CARBONATE DARK LAVA? INCLUSIONS.				
472.0 - 479.0	Diorite: FINE TO MEDIUM GRAINED DARK MASSIVE ROCK WITH FAIRLY SHARP CONTACTS				
479.0 - 490.0	DARK GREEN LAVA: DARK GREEN SHEARED AND CONTAINING 10% BARREN LOOKING QTE-CARBONATE VEINLETS AND STRINGERS. IF SLUDGE RING RECONSIDER THIS				
490.0 - 557.0	Diorite: STARTING AS MASSIVE FINE GRAINED ROCK WITH SOME LARGE FELDSPAR PHENOCRYSTS IN FIRST 10 FEET IT THEN BECOMES A COARSE GRAINED HORNBLAND DIORITE. CONTACT (70°) TO THE CORE.				
	END OF HOLE 557.0				
	A 557' ANGLE OF DIP - 40°				