



42A09SW8886 19 CARR

010

DIAMOND DRILLING

TWP/AREA Carr

REPORT NO. #19

WORK PERFORMED FOR: G.E. Parsons

RECORDED HOLDER: SAME AS ABOVE]
: OTHER]

CLAIM NO.	HOLE NO.	FOOTAGE	DATE	NOTE
979579	90-1	707'	Aug/90	1'
L 979580	90-2	685'	Aug/90	1

NOTES:

1. Report of work #W9380.00114

FILED July 5/93

CARR TWP. PROJECT

D. D. H. 90-1

Location: Claim 979579; NE $\frac{1}{4}$ S $\frac{1}{2}$ Lot 5, Con. II, Carr Twp;
11 + 00N on Line 6W or 24 + 30N of Con. I-Con. II line
and 6 + 00W of Lot 4-Lot 5 line

Bearing: Due North Length: 707 ft.

Dip: @ collar 80°; @ 300 ft. 79°; @ 500 ft. 77 $\frac{1}{2}$ °

Started: August 21, 1990; completed August 23, 1990

Drilled by Heath & Sherwood; Logged by G. E. Parsons

0-85 ft. Overburden clay except for last foot of silt

85-275.5 Andesite massive, dark green, uniform, fine-grained

86.7 - 88.0 1" qtz. vein with silicified walls; fine
discontinuous seams of pyrite; trace of chalc; 30° to core

Sample No. 801 Nil oz. Au/1.3 ft.

@ 102.4 1" of sugary qtz-carb. vein @ 30° to core

105 - 120 locally some fine disseminated pyrite

@ 128.5 1" of light grey qtz-carb. @ 30° to core

@ 134.5 1" of light bluish grey carb. at 30° to core

@ 145.6 1 $\frac{1}{2}$ " of grey carb. @ 60°

@ 163.3 1" of grey carb. " "

@ 166.5 2" of " " @ 65°

@ 175.5 a tight shear @ 25° with 50% fine magnetite

182.5 - 184 core broken up by slips @ 25°

186 - 188.4 a 1" carb. vein along slip @ 15° to core plus a
2" carb. vein @ 40°

195 - 197 core broken up

@ 197.0 2" of carb. plus fine magnetite; 30° to core

199.3 - 200.3 1" vein of qtz. -carb. @ 25° to core; fine pyrite
with some in wallrock.

Sample No. 802 0.003 oz. Au/1.0 ft.

204.6-205.3 a 1" qtz. -carb. vein @ 50° and with pyrite as above

Sample No. 803 0.002 oz. Au/0.7 ft.

230-275.5 still massive but locally lighter coloured plus epidote.

D. D. H. 90-1 con'd

275. 5-336. 6 ft. Diorite Porphyry

A very distinctive massive unit; 35% white feldspar phenos. and 15% dark green hornblende phenos. in a fine light grey matrix; locally minor alteration giving the core a bluish grey cast with the feldspars becoming less distinct and the hornblende indistinct due to alteration. First contact intrusive, slightly irregular and averaging 50° to the core; last contact on a tight slip @ right angles to core.

@ 284 slip at 30° with fine sulphides

285. 7-288. 3 slightly altered and semi-granulated with 1% fine pyrite

Sample 804 Nil oz. Au/2. 6 ft.

331-336. 6 porphyritic texture in part indefinite plus sections resembling inclusions of andesite.

336. 6-355. 7 Andesite

as before but showing areas of alteration

337-337. 7 fault zone? blebs of carb. in a semi-sheared chloritic matrix; first contact @ 30° ; second contact @ 65°

345. 5-346. 7 shear slip @ 25° with fine dark sulph; 30% qtz. -carb. veining showing brecciation; some small patches of pyrite; adjacent wallrock epidotized

Sample 805 Nil oz/ Au/1. 2 ft.

355. 7-360 Diorite Porphyry

identical to that between 275. 5 and 336. 6 except feldspar phenos are petite; first contact indefinite but last contact very definite but irregular and averaging 30° to core

360-450 Andesite

fairly massive but with a distinctive blotchy appearance due to spots, patches, seams, stringers, etc. of a light yellowish green epidote-bearing alteration

381. 4-385. 5 includes four zones of brecciation with qtz. -carb; core broken; slips @ 25 to 40

390. 5-393 includes two zones (60% of core) with minor qtz; trace of pyrite; angular inclusions of unaltered andesite in one zone

Sample 806 Nil oz. Au/2. 5 ft.

@ 428 broken core, 1" qtz. carb. plus trace of pyrite; slip @ 55° to core

450-530 Destor-Porcupine Fault Zone

450-451 Fault Zone highly sheared; qtz. frags. in a soft muddy chloritic matrix; slips @ 60° to core, 1" of mud

451-456 qtz. -rich breccia with light pinkish dense altered rock fragments; less than 1% pyrite

Sample 807 450-456 0.003 oz. Au/6 ft.

456-460 continuation of that above

Sample 808 0.003 oz. Au/4 ft.

D.D.H 90-1 cont'd

← Destor. - Porcupine Fault Zone cont'd

- 460-489 Carbonate Zone with 15% white qtz.; light green colour; foliation 45° ± to core; minor pyrite
- 489-491 pink syenitic zone; fine grained; minor pyrite
 Sample 809 Nil oz Au/2 ft.
- 491-496 mix of green carbonate and foliated schist; contorted; 30% white qtz. -carb., less than 1% pyrite
 Sample 810 Nil oz. Au/5 ft.
- 496-499 foliated; light grey green colour; foliation 45-60° to core; locally qtz. carb. veins
- 499-517 foliated chloritic carbonate "schist" change from light grey green to black with a distinct micaceous content probably a mix of talc and serpentine
 515, 2-516 a hard dark grey fine grained rock
- 517-518 Fault Gouge mostly a soft chloritic muddy zone foliated @ 50°
- 518-527 continuation of fault zone; broken, very soft
- 527-530 Fault Gouge very soft; black and qtz. frags. in chloritic muddy gouge; strong slip @ 55°
- 530-604 Diabase a medium grained, uniform, massive type; grades to finer-grained to dense at contacts; final contact @ 50°

Destor. Porcupine

604-610 Talc-Serp-Chorite-Carb. "Schist" mostly black; very soft, scattered blebs of pyrite; foliation 50-60° white carbonates and thin lenses, seams and blebs along foliation

610-707 Sediments
End exceptionally well and uniformly banded and bedded @ 65° to core; 5-30% black slaty bands generally paper to 1/2" thick; the remainder light grey fine grained graywacke

637.5-638.5 2" of a contorted black slaty band followed by slightly bleached sediments with 50% light blue interbanded quartz; 1% scattered pyrite

Sample 812 0.002 oz. Au/1.0 ft.

686.8-688, 691.0-691.4 and 697.7-698.0 white quartz-carb. veins.

End.

CARR TWP. PROJECT

D. D. H. 90-2

Location: Claim L979580; NW $\frac{1}{4}$, S $\frac{1}{2}$ Lot 5, Con. II, Carr Twp.
11 + 50N on Line 14W or 24 + 80N of Con. I-Con. II
line and 1400 ft. west of Lot 4-Lot 5 line

Bearing : Due North

Dip : @ Collar 80° Length 685 ft.

Started: Aug. 23, 1990; completed Aug. 28, 1990

Drilled by Heath & Sherwood; Logged by G. E. Parsons

0 - 67 ft. Overburden clay except for last 1 $\frac{1}{2}$ ft. of silt and
fine sand under water pressure

67-334 $\frac{1}{2}$ Andesite massive good coring type; for most part tends
to be blotchy with seams of epidote-bearing material and
possibly pillow selvages

73-89, 142-150 with fine amygdules

218-232 more feldspathic

@ 72 1" white qtz. -carb. vein @ 75° to core

102-103.5 section starts on a slip at 15° and ends with 1"
qtz. -carb. @ 60°; fine interlocking fractures between
above structures with patches plus a little chalcopryrite

110-115.5 70% white qtz. -carb. veining at 30-50° to core;
trace of pyrite wallrock unaltered.

117-117.5 qtz.-carb.

@ 115 " " slips @ 15°

130-130.5 bluish tinged qtz. carb.

132-132.6 vein crushed and brecciated qtz. -carb. @ 80° to
core; some fine seams of dark pyrite

@ 141 2" of light bluish qtz. carb. @ 60°±; some
cs. pyrite

@ 141.5 2" ditto

160-161 bluish grey carb. with 20% white carb. 40° to core

218-232 locally finely feldspathic

@ 236 thin mud slip @ 30°

242.5-243 a light lavender colour silicified section plus qtz. -carb.
and pyrite; 60° to core; offset in core by a 15° slip

243-244.5 some qtz. and pyrite

Sample 813 242.0-244.5 0.003 oz. Au/2.5 ft.

248.5-249.4, 249.7-250, 250.4-251 qtz. and qtz. carb. veining

@ 45° to core; @ 251 a 3/4" wide section bounded by slips
@ 35° 50% pyrite

Sample 814 248.5-251 0.016 oz. Au/2.5 ft.

D. D. H. 90-2

- 261-263.5 first foot a light greyish qtz. -carb;
 262-263 mostly a light lavender coloured altered rock;
 last 6" fractured with some alteration; all with pyrite (1%)
Sample 815 261.0-263.5 0.018 oz. Au/2.5 ft.
- 267-268 some qtz. -carb. and pyrite veining almost along the core
 295-296 light grey qtz. -carb; some brecciation; slips @ 25°
 296-334.5 generally a lighter grey colour with scattered carb. -
 filled fractures
 304.5 some fine disseminated pyrite
 307-310 slips 20-40° to core; local alteration zones with
 fine pyrite; pyrite seams on chlorite slips; fractures and
 blebs of qtz. -carb.
Sample 816 0.002 oz. Au/3 ft.
- 310-312 blebs and fragments of dark blue quartz, plus
 frags and lenses of a hard crushed dark (brownish) altered
 rock with abundant very fine pyrite in a light blue siliceous
 matrix; @ 312 a very strong black chloritic zone 2" wide
 at 20°; mineralization unique to core
Sample 817 0.004 oz. Au/2 ft.
- 312-315 light grey carb.; partly brecciated; wisps of
 dark green and black chlorite, trace of pyrite
Sample 818 Nil oz. Au/3 ft.
- 327.5-334.5 grey qtz. -carb. plus inclusions of unaltered
 wallrock; trace of pyrite; 35° to core
- 334.5-341 Diorite Porphyry fine white feldspars in a fine grained
 dark matrix; contacts rather indefinite; hard
- 341-387 Andesite clotty, evidence of pillow selvages, locally amygs.
 384.5-385 light bluish grey carb. 40° to core, few seams
 of pyrite
- 387-393 Diorite Porphyry fine white feldspars; however, only
 locally discernible; hard
- 393-402 Andesite
- 402-404 Diorite Porphyry as above
- 404-517.7 Andesite grey green; locally narrow carbonate zones,
 few epidote-rich clots
 442-459 50% of core with feldspathic sections
 459-500 10% ditto
 500-517 hairline fractures filled with white carbonate
 increasing down hole
- 517.7-662.5 Distor-Porcupine Fault Zone
 517.7-522 white qtz. with 20% inclusions of unaltered
 greenstone; core in part as gravel; one foot † lost.
 522-527 as 517.7-522; core mostly broken and partly as
 gravel; one foot † lost
 @ 522 2" of mud fault gouge with a few small qtz. frags;
 bounding slips @ 65° to core
 527-528 white qtz.; 30% silicified light coloured wallrock
 frags.; qtz. fractured; trace of pyrite; core broken

D. D. H. 90-2

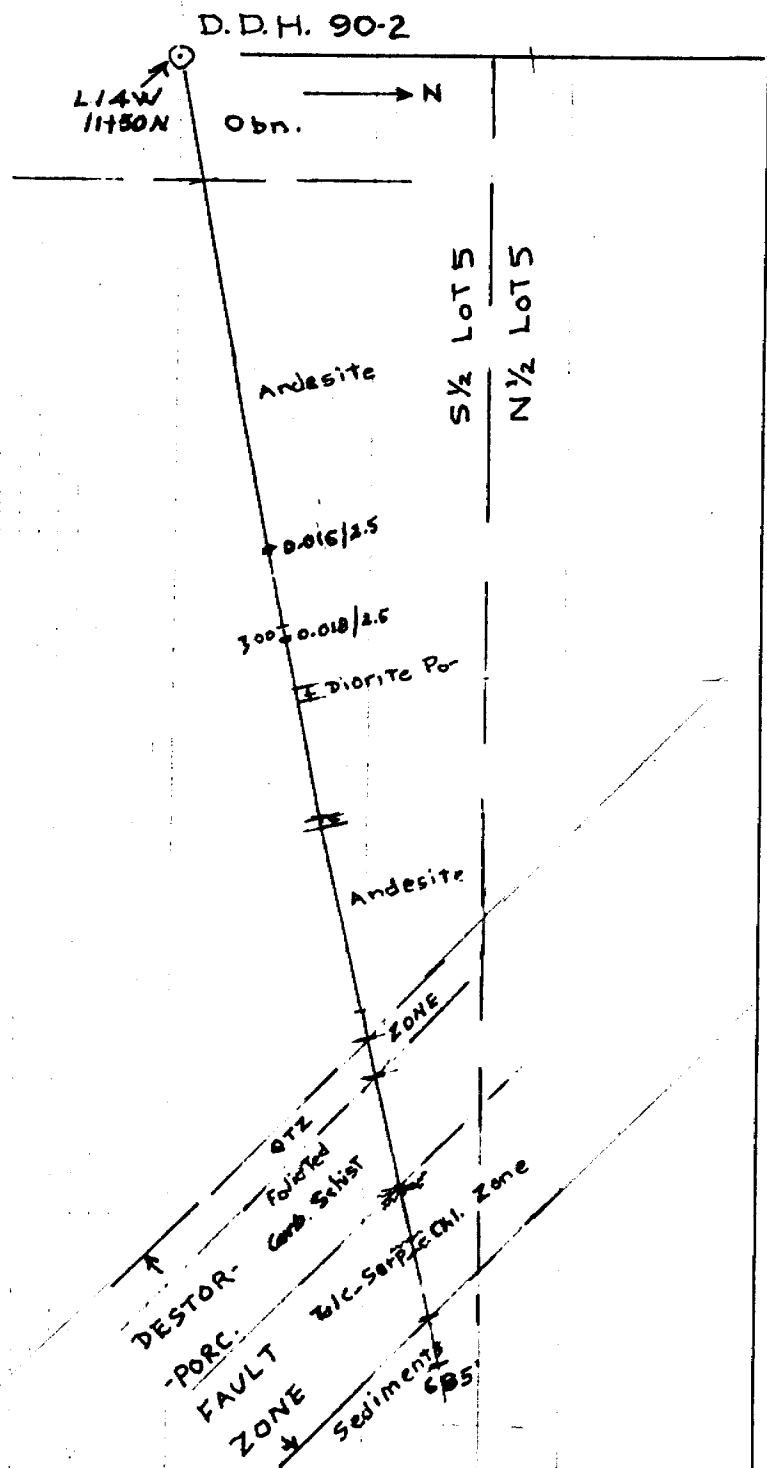
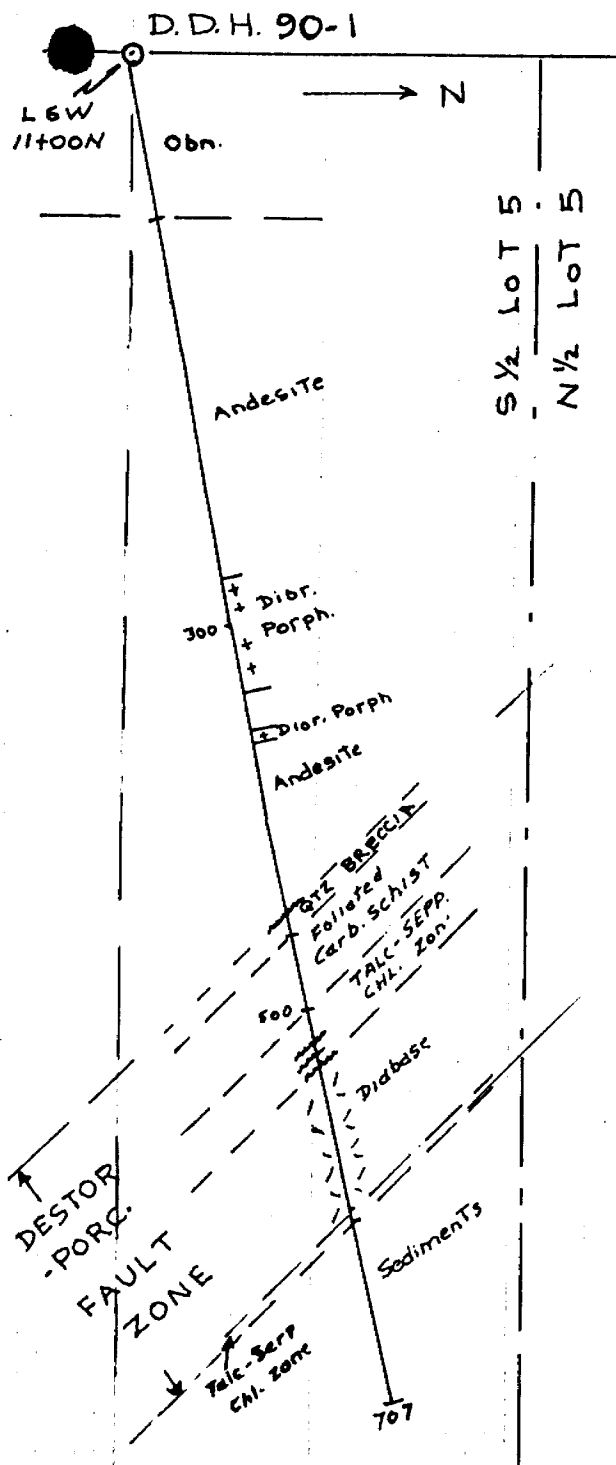
- 528-530 as above with wallrock frags. only slightly altered
Sample 819 527-530 0.005 oz. Au/ft.
- 530-532 white qtz. with 40% wallrock frags. minor alteration; foliation 60°
- 532-534.5 Sample 820 Nil oz. Au/ton/ft.
 white qtz. with 50% wallrock frags. of these 50% altered to a dull tan colour; all fractured; some strong slips 40-60°; trace of pyrite
- 534.5-537 white qtz. and foliated soft altered light olive green schist 50:50; foliation @ 55
- 537-539 Sample 821 0.007 oz. Au/ton/ft.
 1 ft. of greyish fractured qtz; 3" of qtz. and schist; 8" tan to pinkish fractured wallrock cemented with qtz. @ 538.7 strong slip @ 70° followed by reddened wallrock fractured and cemented by blue qtz. for 15"; 1% pyrite
- 539-550.5 light yellowish green foliated schist with local buildup of white qtz.
- 550.5-560 a milky white qtz. cementing patches of light blue qtz.; massive; hard; trace pyrite
- 550.5-556 Sample 822 0.004 oz Au/5.5 ft.
- 560-595.5 "Schist" light olive green; thin uniformly foliated; with 50% milky qtz. along foliation; solid except for last 10 ft. which is more fissile; foliation 50° ± to core
- 569.5-570.5 as 550.5-560
- 576.5-577.2 Diabase? grey green dense hard with large amygdules.
- 595.5-662.5 Talc-Serpentine-Carbonate Zone after peridotite; black, very soft. mostly foliated, sheared and badly broken up; locally massive with fine carbonate crystals; first 25 ft. with white qtz. and carbonates
- @ 597 2" mud followed by 4" of fissile schists
- @ 600.5 6" of fissile schists
- 609-610.5 approaching a fissile schist
- 618-634 relatively abundant small rounded frags. of white qtz. in a black matrix (a breccia)
- 620-622 fissile schist to fault gouge mud
- 624.5-627 ditto with qtz. frags.
- 662.5-685 Sediments
 well bedded at 50-60° to core; no distortion of bedding; first contact on a slip parallel to the bedding at the slip; dominantly a medium grey colour with generally thin black slaty beds; fine grained.

End.

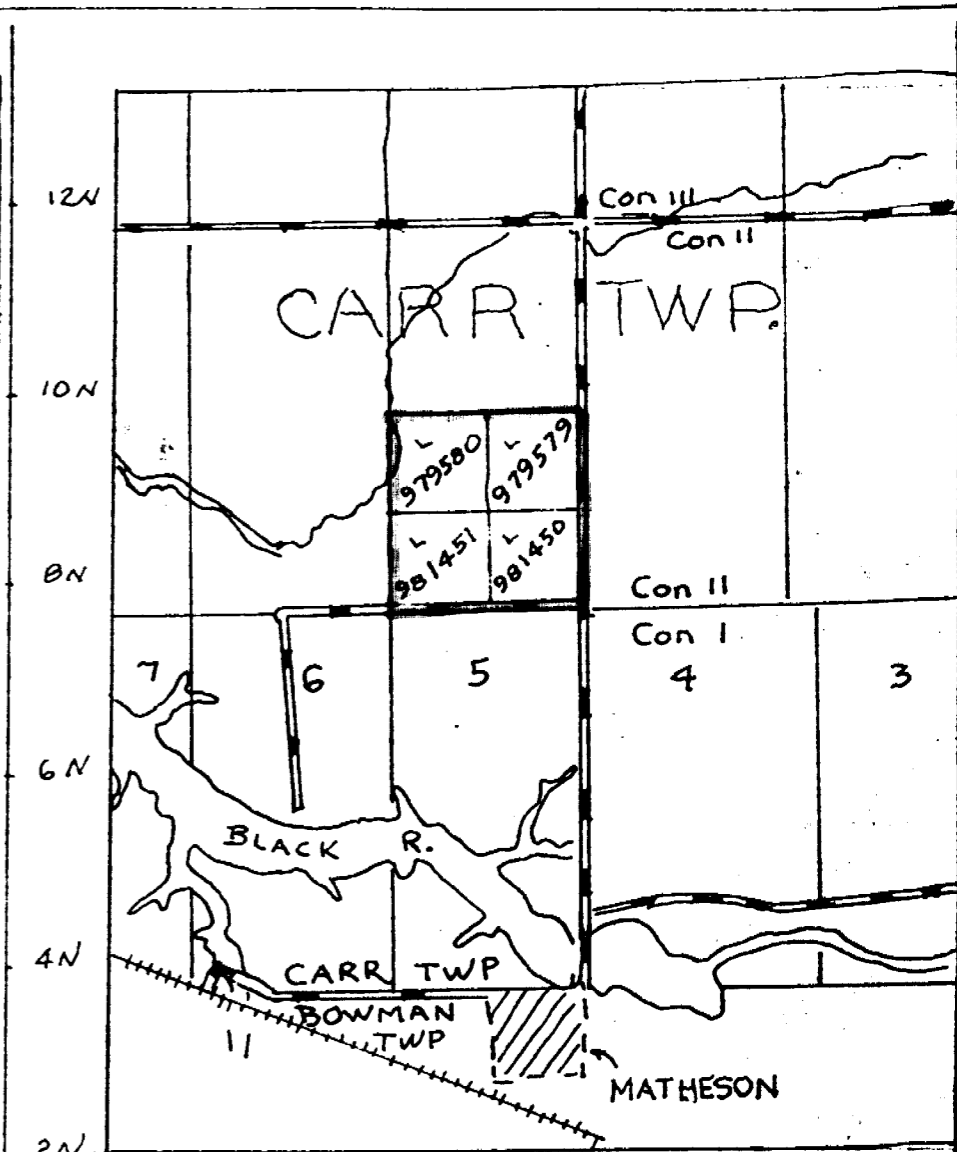
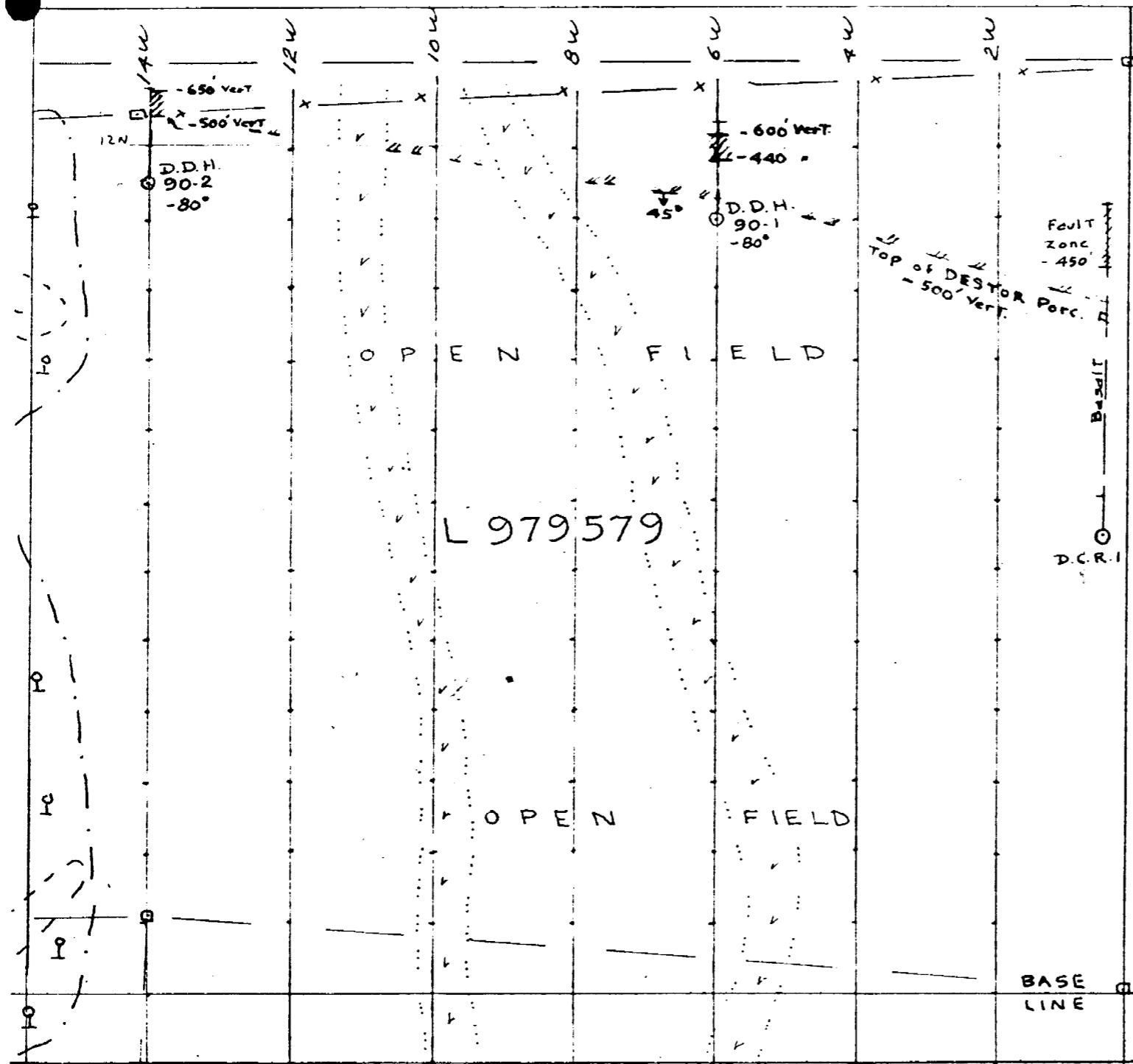
Attachment: Sludge Assay Sheet

August 28, 1990

G. E. Parsons



VERTICAL SECTIONS
 D.D.H's 90-1 & 90-2
 S ½ Lot 5 Con. II Carr Twp.
 Scale: 1 in = 100 ft.



KEY MAP
1 in. = 1/2 mi.

D.D.H. LOCATION MAP
1 in. = 200 ft.

B.E. Parsons

Report of Work Conducted After Recording Claim

Transaction Number
W9380.00114

Mining Act

Personal information collected on this form is obtained under the authority of the M this collection should be directed to the Provincial Manager, Mining Lands, Min Sudbury, Ontario, P3E 8A5, telephone (705) 670-7264.



900

- Instructions:**
- Please type or print and submit in duplicate.
 - Refer to the Mining Act and Regulations for requirements of filing assessment work or consult the Mining Recorder.
 - A separate copy of this form must be completed for each Work Group.
 - Technical reports and maps must accompany this form in duplicate.
 - A sketch, showing the claims the work is assigned to, must accompany this form.

Recorded Holder(s) G. E. PARSONS 1/3 interest		Client No. 214241
Address 136 Chatsworth Drive Toronto MAR1S2		Telephone No. 416-483-5155
Mining Division LARDER LAKE	Township/Area CARR	M or G Plan No. G-3613
Dates Work Performed From: Aug 20 incl		To: Aug 28 incl 1990

Work Performed (Check One Work Group Only)

Work Group	Type
Geotechnical Survey	
Physical Work, Including Drilling	Diamond Drilling BQ Wire Line
Rehabilitation	
Other Authorized Work	
Assays	
Assignment from Reserve	JUN 25 1993

Total Assessment Work Claimed on the Attached Statement of Costs \$ **1/2 of 16,937 or 8469**

RECEIVED
Note: The Mining Act requires that the recorded holder cannot verify expenditures claimed in the statement of costs within 30 days of a request for verification.

Persons and Survey Company Who Performed the Work (Give Name and Address of Author of Report)

Name	Address
Heath & Sherwood Drilling	PO Box 998, Kirkland Lake, P2N3L3
N. McChristie (core grabber)	P.O. Box 388, MATHESON, POKINO
G. E. Parsons (geologist)	136 CHATSWORTH DR, TORONTO MAR1S2

(attach a schedule if necessary)

Certification of Beneficial Interest * See Note No. 1 on reverse side

I certify that at the time the work was performed, the claims covered in this work report were recorded in the current holder's name or held under a beneficial interest by the current recorded holder.	Date 3 June 93	Recorded Holder or Agent (Signature) G. E. Parsons
--	--------------------------	--

Certification of Work Report

I certify that I have a personal knowledge of the facts set forth in this Work report, having performed the work or witnessed same during and/or after its completion and annexed report is true.		
Name and Address of Person Certifying G. E. PARSONS, 136 CHATSWORTH DR, Toronto MAR1S2		
Telephone No. 416-483-5155	Date 3 June 93	Certified By (Signature) G. E. Parsons

For Office Use Only

Total Value Cr. Recorded 88469 Reserve	Date Recorded June 10, 1993	Mining Recorder <i>[Signature]</i>	Received Stamp RECEIVED LARDER LAKE MINING DIVISION JUN 10 1993 TIME 10:02c
	Deemed Approval Date _____	Date Approved June 10, 1993	
	Date Notice for Amendments Sent		



Statement of Costs
for Assessment Credit

État des coûts aux fins
du crédit d'évaluation

Mining Act/Loi sur les mines

Transaction No./N° de transaction
W9380.00117

Personal information collected on this form is obtained under the authority of the Mining Act. This information will be used to maintain a record and ongoing status of the mining claim(s). Questions about this collection should be directed to the Provincial Manager, Minings Lands, Ministry of Northern Development and Mines, 4th Floor, 159 Cedar Street, Sudbury, Ontario P3E 6A5, telephone (705) 670-7264.

Les renseignements personnels contenus dans la présente formule sont recueillis en vertu de la Loi sur les mines et serviront à tenir à jour un registre des concessions minières. Adresser toute question sur la collecte de ces renseignements au chef provincial des terrains miniers, ministère du Développement du Nord et des Mines, 159 rue Cedar, 4^e étage, Sudbury (Ontario) P3E 6A5, téléphone (705) 670-7264.

1. Direct Costs/Coûts directs

Type	Description	Amount Montant	Totals Total global
Wages Salaires	Labour <i>Carving</i> Main-d'oeuvre	\$800.	
	Field Supervision Supervision sur le terrain	\$1600	2400
Contractor's and Consultant's Fees Droits de l'entrepreneur et de l'expert- conseil	Type <i>Diamond Drilling</i>	13,936.92	
			13,937
Supplies Used Fournitures utilisées	Type		
			—
Equipment Rental Location de matériel	Type		
			—
Total Direct Costs Total des coûts directs			16,337

2. Indirect Costs/Coûts indirects

** Note: When claiming Rehabilitation work Indirect costs are not allowable as assessment work.
Pour le remboursement des travaux de réhabilitation, les coûts indirects ne sont pas admissibles en tant que travaux d'évaluation.

Type	Description	Amount Montant	Totals Total global
Transportation Transport	Type <i>Vehicle</i>	240	
			240
Food and Lodging Nourriture et hébergement	<i>12 days</i> <i>@ \$30.00</i>	360	360
Mobilization and Demobilization Mobilisation et démobilisation			—
Sub Total of Indirect Costs Total partiel des coûts indirects			600
Amount Allowable (not greater than 20% of Direct Costs) Montant admissible (n'excédant pas 20 % des coûts directs)			600
Total Value of Assessment Credit (Total of Direct and Allowable indirect costs)		Valeur totale du crédit d'évaluation (Total des coûts directs et indirects admissibles)	16,937

Note: The recorded holder will be required to verify expenditures claimed in this statement of costs within 30 days of a request for verification. If verification is not made, the Minister may reject for assessment work all or part of the assessment work submitted.

Note : Le titulaire enregistré sera tenu de vérifier les dépenses demandées dans le présent état des coûts dans les 30 jours suivant une demande à cet effet. Si la vérification n'est pas effectuée, le ministre peut rejeter tout ou une partie des travaux d'évaluation présentés.

Filing Discounts

- Work filed within two years of completion is claimed at 100% of the above Total Value of Assessment Credit.
- Work filed three, four or five years after completion is claimed at 50% of the above Total Value of Assessment Credit. See calculations below:

Total Value of Assessment Credit	Total Assessment Claimed
\$ 16,937	\$ 8,468.50

Remises pour dépôt

- Les travaux déposés dans les deux ans suivant leur achèvement sont remboursés à 100 % de la valeur totale susmentionnée du crédit d'évaluation.
- Les travaux déposés trois, quatre ou cinq ans après leur achèvement sont remboursés à 50 % de la valeur totale du crédit d'évaluation susmentionné. Voir les calculs ci-dessous.

Valeur totale du crédit d'évaluation	Evaluation totale demandée
16,937	8,468.50

Certification Verifying Statement of Costs

I hereby certify:
that the amounts shown are as accurate as possible and these costs were incurred while conducting assessment work on the lands shown on the accompanying Report of Work form.

that as G. E. PARSONS,
Recorded Holder 13 I am authorized
(Recorded Holder, Agent, Position in Company)

to make this certification

Attestation de l'état des coûts

J'atteste par la présente :
que les montants indiqués sont le plus exact possible et que ces dépenses ont été engagées pour effectuer les travaux d'évaluation sur les terrains indiqués dans la formule de rapport de travail ci-joint.

Et qu'à titre de _____ je suis autorisé
(titulaire enregistré, représentant, poste occupé dans la compagnie)

à faire cette attestation.

Signature G. E. Parsons Date 3 June 1997

