



42A10NE0069 12 WALKER

010

DIAMOND DRILLING

TOWNSHIP: WALKER

REPORT No.: 12

WORK PERFORMED BY: HOLLINGER ARGUS LIMITED

<u>CLAIM No.</u>	<u>HOLE No.</u>	<u>FOOTAGE</u>	<u>DATE</u>	<u>NOTE</u>
L 517100	1-79	526.0	Oct./79	(1)
L 522223	2-79	445.0	Oct./79	(1)

971

NOTES: (1) # 58-80

Location of Collar from #1 Post of L.517100 = 62 m West, 338 m South **DIAMOND DRILL REPORT**

HOLE No. WA1-1-79 1.

Location: Line 720 m E, Station 632 m N
 Core Size: BQ PROPERTY: WALKER #1 GROUP
 Azimuth: 176° Township: Walker Township
 Elevation: Surface Location of Collar from # Post of
 Dip: -55° @ collar; N/S
 @ 200' (60.9m)-50°; @ 400' (121.9m)-47° E/W

Commenced: October 10, 1979
 Finished: October 13, 1979
 Contractor: Bradley Bros.

From	To	DESCRIPTION	From	To	Width	Au oz	Ag ppm	Cu ppm	Pb ppm	Zn ppm	Ni ppm	Description of Sample
0	150'	Casing - predominantly fine sand.										
150	239.6	ANDESITE										
		Light green to greenish white; V.F.G. chloritic - carbonate-rich matrix with 15% to 20% of V.F.G. to F.G. (<.1 cm) feldspar grains and <2% quartz grains - feldspars are slightly to moderately saussuritized? from 201 to 239.6 - possible dolomite-ankerite from 233.1 to 239.6; V.F.G. to F.G. (<.1 cm) but V.F.G. (<.1 cm) from 201 to 239.6 with evidence of a sharp contact at 201, 85° to C.A., to distinguish between two different andesite flows.										
		Equigranular texture showing small section being possibly amygdaloidal? (quartz-carbonate), frequent milky white quartz carbonate stringers and veinlets (<8 cm wide).										
		Mineralization: occasional isolated V.F.G. to M.G. (<.2 cm) pyrite cubes (<1%), copper-colored native copper or niccolite (<1% to 2% by volume) with minor sphalerite (<1%) in carbonate-rich andesite between 178.7 - 183.3, occurs as v.f.g. (<.1 cm) scattered grains, mineralization is associated with orange-	178	179	1	0.005	<1	275	95	65	50	
			179	180	1	Trace	<1	4400	65	50	45	
			180	181	1	"	<1	4400	60	45	30	
			181	182	1	"	1	230	55	50	40	
			182	183	1	"	<1	245	50	50	45	

LARDER LAKE
 MINING DIV.
RECEIVED
 APR - 9 1980
 AM 7 8 9 10 11 12 1 2 3 4 5 6 PM


DIAMOND DRILL REPORT

Location
Core Size
Azimuth
Elevation
Dip

PROPERTY: WALKER #1 GROUP
Township: Walker Township
Location of Collar from # Post of
N/S
E/W

HOLE No. WA1-1-79
Commenced
Finished
Contractor

5.

From	To	DESCRIPTION	From	To	Width						Description of Sample
		Occasional banding between felsic to intermediate tuff and thin carbonaceous tuff (<2 cm thick) lamination ranging 50° to 65° from C.A.									
		Pyroclastic breccia or breccia zones...									
		348.6 to 349 - felsic to intermediate tuff fragments (≤10 cm in size) in a slightly carbonaceous matrix, angular shaped fragments with sharp contact at 349, 45° to C.A.									
		379.5-380.6 - felsic to intermediate tuff and quartz-feldspar fragments (>1 cm in size) in a tuffaceous matrix, angular shaped and well compacted.									
		471-481 - reworked argillaceous tuff? fragments (≥1 cm in size) in a tuffaceous matrix; slightly chloritic matrix from 477.7 to 481 with fragments not being distinct; angular shaped and well compacted; gradational contact.									
		Mineralization: barren to occasional pyrite (<1%) occurring as scattered grains or cubes; V.F.G. to M.G. (≤.2 cm).									
526		END OF DDH WA1-1-79									

Location of Collar from #1 Post of L.522223 = 42m West

Location: Line 720 m E, Station 360 m N.

170m South

DIAMOND DRILL REPORT

HOLE No. WA1-2-79

1.

Core Size: AQ

PROPERTY: WALKER #1 GROUP.

Azimuth: 176°

Township: Walker Township

Elevation: Surface

Location of Collar from # Post of

Dip: -55° @ collar; @ 200' (60.9m) -50°;
@ 435' (132.6m) -39°

N/S

E/W

Commenced: October 15, 1979

Finished: October 19, 1979

Contractor: Bradley Bros.

From	To	DESCRIPTION	From	To	Width	Au oz	Ag oz	Ag ppm	Cu ppm	Zn ppm	Description of Sample
0	164'	Casing - fine sand and boulders with increasing frequency of boulders towards 164.									
164	220.8	INTERMEDIATE HYALOCLASTIC BRECCIA - grayish white color, intermediate in composition (dacitic) being slightly argillaceous - minor sections being graphitic - <1% strained sub-rounded to elliptical shaped quartz (carbonate) porphyroblasts (<.7 cm) that is prominent in the V.F.G, intermediate tuff; very fine to coarse fragments (<.1 cm to >5 cm) being gradationally coarser fragments from 203.7 to 220.8 with fragments being intermediate tuff in a slightly silicified matrix; coarse fragmentals from 175.6 to 176.2, 186.1 to 187.4, and 192.0 to 196.0. Occasional bedding 45° to 55° from core axis between finer and coarser fragmental sections; numerous quartz stringers and veinlets. Mineralization:- occasional V.F.G. to F.G. (<.1 cm) pyrite grains (<1%) with specks of chalcopyrite (<.1%) generally associated within thin quartz stringers; increase in pyrite (<1%) with graphitic slips. Contact - gradational increase in calcareous matrix.									
			205	210	5	Trace		<1			Barren hyaloclastic breccia
			210	215	5	"		<1			Barren hyaloclastic breccia
			215	220	5	"		<1			Barren hyaloclastic breccia

LARDER LAKE
MINING DIV.
RECEIVED
APR - 9 1980
AM PM
7 18 19 10 11 12 13 14 15 16

DIAMOND DRILL REPORT

Location
Core Size
Azimuth
Elevation
Dip

PROPERTY: WALKER #1 GROUP
Township: Walker Township
Location of Collar from # Post of
N/S
E/W

HOLE No. WA1-2-79 3.
Commenced
Finished
Contractor

From	To	DESCRIPTION	From	To	Width	Au OZ	Ag OZ	Ag ppm	Cu ppm	Zn ppm	Description of Sample
		to 264.1 - barren to occasional V.F.G. to F.G.									
		pyrite (<1%) from 264.1 to 269.8 - 10% to 15% V.F.G.									
		to M.G. (<.2 cm) pyrite from 269.8 to 277 within the matrix and fragments.									
		Contact:- gradational decrease in carbonaceous material.									
277	373.3	HYALOCLASTIC BRECCIA - grayish white to grayish black color; V.F.G. carbonaceous - calcareous matrix about moderate calcareous intermediate tuff fragments; very fine to coarse angular fragments (<.1 cm to 30 cm); poorly sorted with a slight gradational of coarser fragments towards 373.3.	276	278	2	Trace		<1	40	25	5%-8% py in breccia (abundant qtz)
		Graphitic tuff zones between...									
		320.6 to 321.3 - black color; strong graphitic matrix with graphitic tuff and massive pyrite fragments (<.3 cm).	278	280	2	"		1	45	20	Barren to <1% py frag. in breccia.
		315 to 316 - similar to section 320.6 to 321.3 with <5% pyrite associated with quartz carbonate. Slight schistosity 40° to 45° from core axis.	315	316	1	"		2	95	90	5%-10% py frag. in carbonaceous hyaloclastic.
		Mineralization:- occasional pyrite (<1%) as angular shaped fragment (<2.5 cm) with minor occurrences as fractured pyrite nodule with quartz rim about borders; 10% pyrite fragment from 315 to	317	319	2	"		<1	80	85	<1% py in carbonaceous hyaloclastic
			319	321	2	"		1	140	95	Graphitic 320.6-321.3 - <1% py
			321	323	2	"		<1	95	150	<1% py in carbonaceous hyaloclastic
			355	358	3	"		1	90	100	~2% py frag. in graphitic zone.

DIAMOND DRILL REPORT

Location
Core Size
Azimuth
Elevation
Dip @ collar

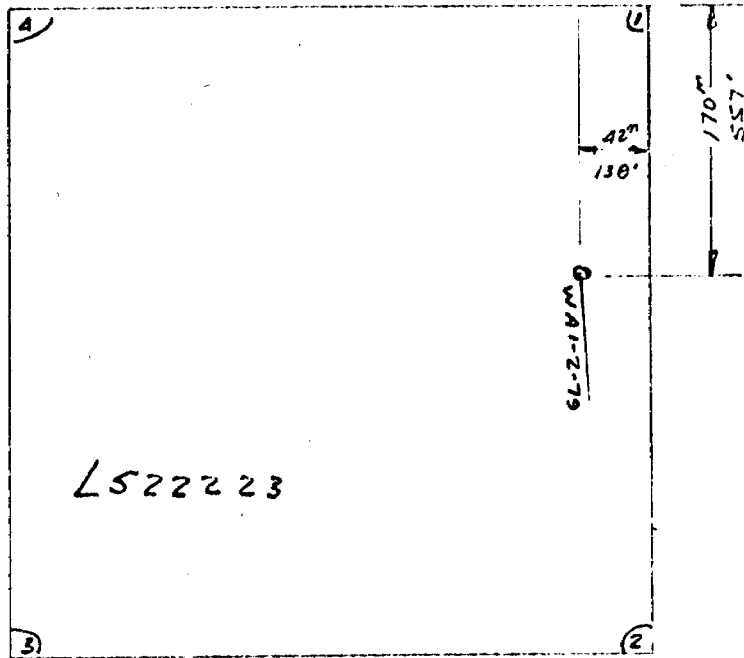
PROPERTY: WALKER #1 GROUP
Township: Walker Township
Location of Collar from # Post of
N/S
E/W

HOLE No. WA1-2-79 6.
Commenced
Finished
Contractor

From	To	DESCRIPTION	From	To	Width	Au oz	Ag oz	Ag ppm	Cu ppm	Zn ppm	Description of Sample
		Graphitic zones between									
	433 to 434)	black color; strongly graphitic matrix	433	434	1	Trace		2	85	25	≤1%-2% py in graphitic-felsic
	437 to 437.5)	with felsic tuff and pyrite fragments									hyaloclastic.
		(<2.5 cm in size); quartz rim about	437	439	2	"		1	40	20	≤1% py in graphitic-felsic
		pyrite fragments.									hyaloclastic.
		Mineralization:- barren to occasional pyrite									
		fragment (<1%); very fine to coarse (≤2.5 cm) pyrite									
		with quartz rim about pyrite.									
445		END OF DDH WA1-2-79									

Handwritten signature

Plan of DDH WAI-2-79



WAIKER TWP
Scale 1" = 400'

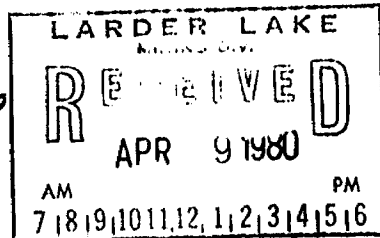
START Oct 15/79

FINISH Oct 19/79

DIA OF CORE 1.06"

WIRE LINE A Q

CONTRACTOR BRADLEY BROS
TIMMINS ON



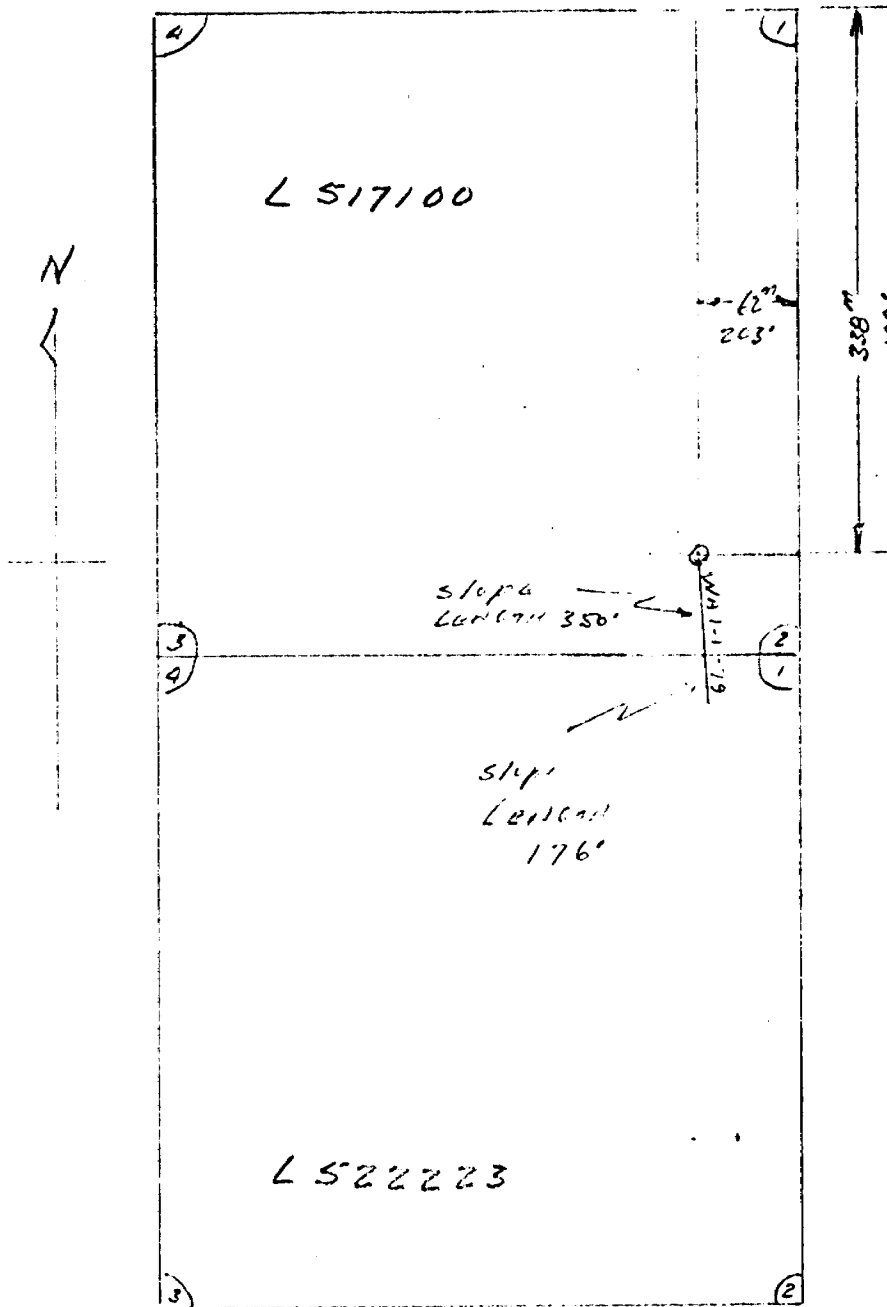
LENGTH 445'

DIP - 55°

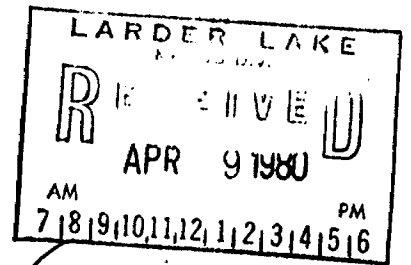
Az 176°

**HOLLINGER ARGUS LIMITED
TIMMINS, ONTARIO**


Plan of DDH WAI-1-79



LENGTH 526
 Dip -55°
 Az 176°
 START Oct 10/79
 FINISH Oct 13/79
 DIA of CORE 1.44"
 WIRE LINE 130
 CONTRACTOR
 BRADLEY BROS
 TIMMINS ON

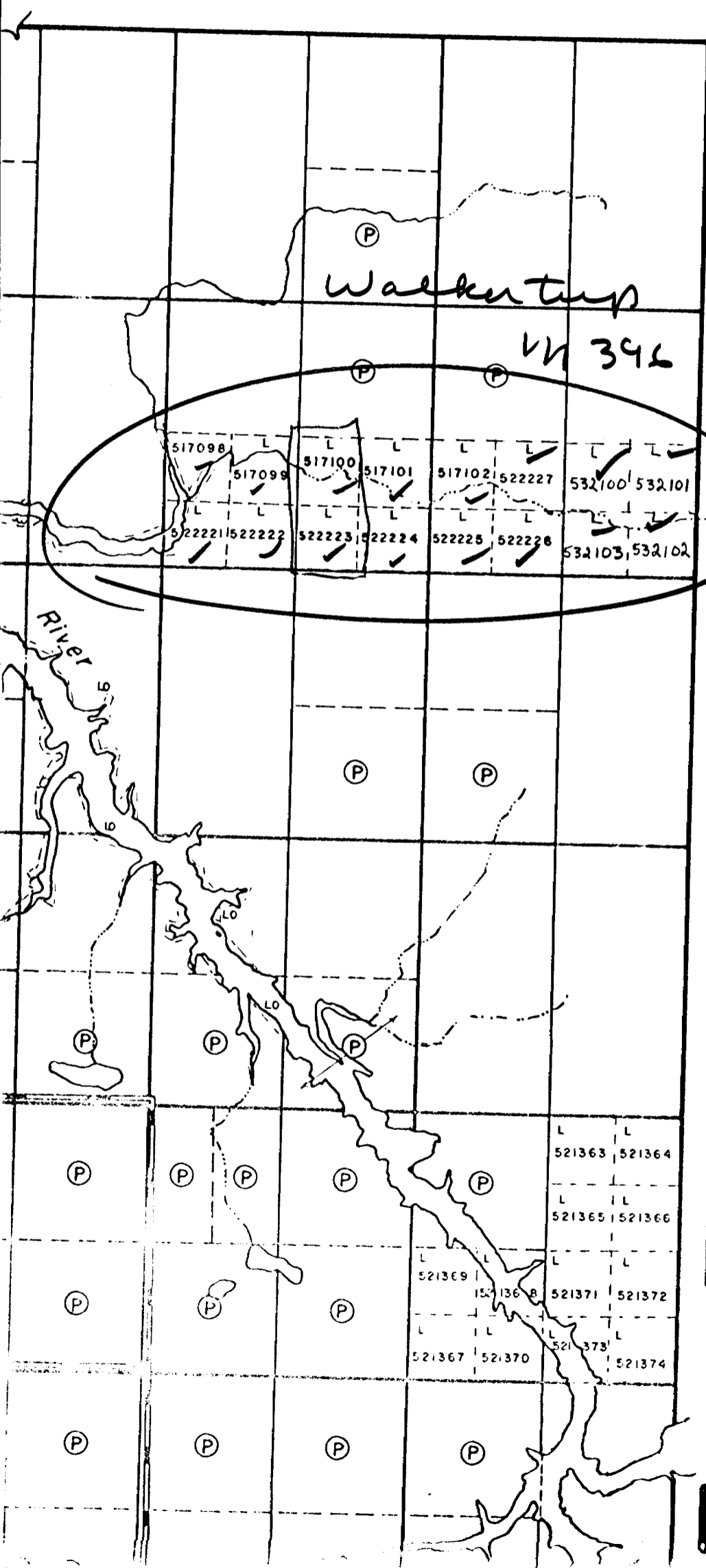


WALKER TRIP
 SCALE 1" = 400'


 HOLLINGER ARGUS LIMITED
 TIMMINS, ONTARIO

HOLLINGER ARGUS LTD.

0.



VI

#58-80

VH 396

V

IV

III

Wilkie Twp.

TH
W
D
LA
MIN

SCALE:

PATENTED
CROWN LA
LEASES
LOCATED
LICENSE O
MINING RIG
SURFACE R
ROADS
IMPROVED
KING'S HIGH
RAILWAYS
POWER LIN
MARSH OR
MINES

400' Surface r
vers.

LO 8570 issued
of Abitibi, B.C.

II

I