



42A10NE0081 13 WALKER

010

DIAMOND DRILLING

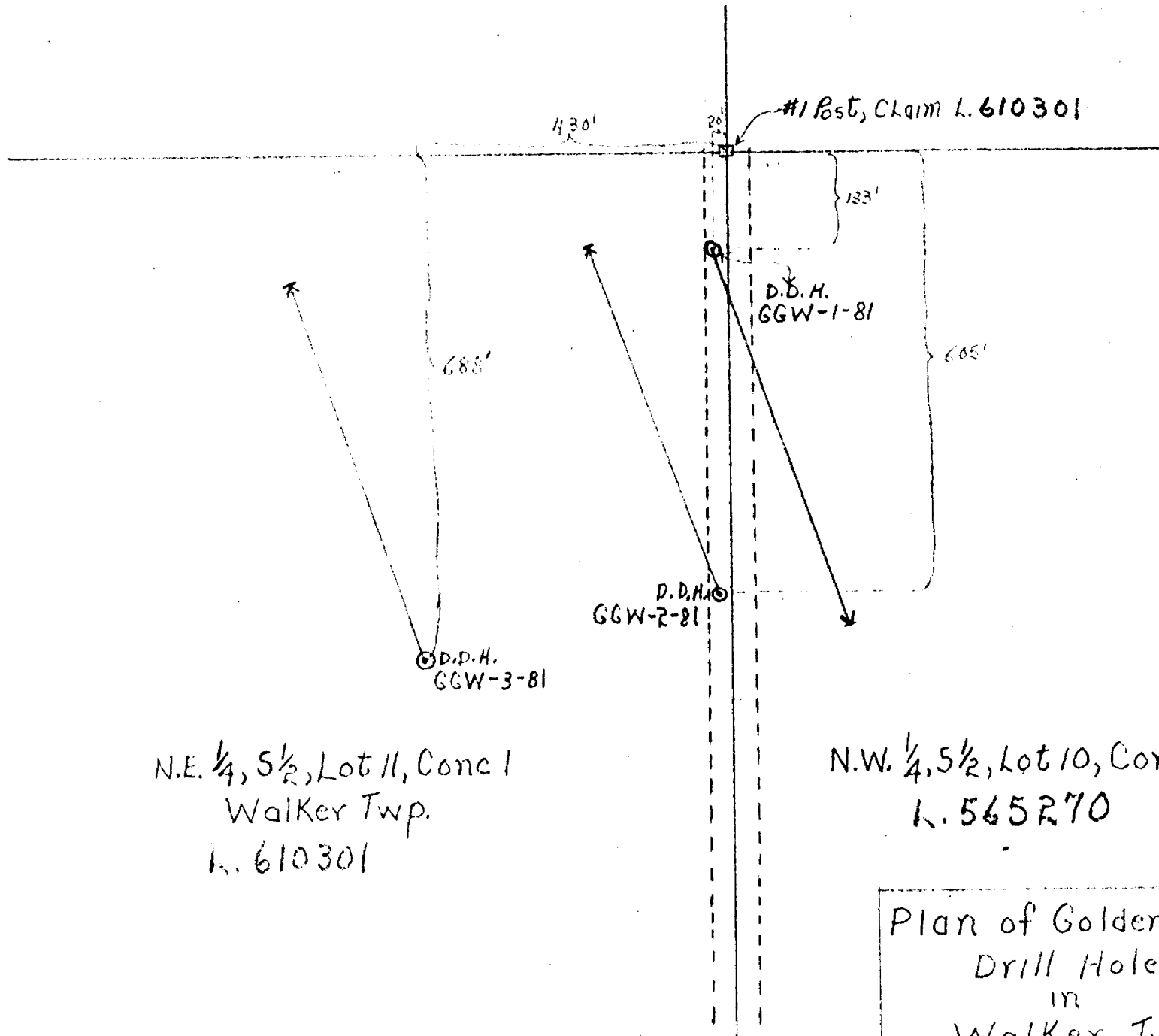
TOWNSHIP: WALKER

REPORT No.: 13

WORK PERFORMED BY: Hugh Douglas Carlson

<u>CLAIM No.</u>	<u>HOLE No.</u>	<u>FOOTAGE</u>	<u>DATE</u>	<u>NOTE</u>
L 610301	GGW-1-81	689.0	July/81	(1)
	GGW-2-81	645.0	July/81	(1)
	GGW-3-81	666.0	July/81	(1)

NOTES: (1) #397-81



#1 Post, Claim L. 610301

430'

123'

D.D.H.
GGW-1-81

685'

605'

D.D.H.
GGW-2-81

D.D.H.
GGW-3-81

N.E. $\frac{1}{4}$, S $\frac{1}{2}$, Lot 11, Conc 1
Walker Twp.
L. 610301

N.W. $\frac{1}{4}$, S $\frac{1}{2}$, Lot 10, Conc. 1
L. 565270

Plan of Golden Grail
Drill Holes
in
Walker Twp.
Scale: 1 inch = 200 feet.

DIAMOND DRILL RECORD

Hole No. GCW-1-81 Sheet No. 1

Property GG-Carlson-Ginn
 Location Walker Twp.
 Latitude _____
 Departure _____
 Bearing S 20° E

Claim # L.610301

Collar	Dip	Corr.
-200'	-45°	-32°
-400'	-39°	-32°
-600'	-41°	-33.5°
-689'	-46°	-38.5°
-689'	-45°	-37.5°

Total Footage 689 feet.

Elev. Collar _____
 Datum _____
 Date Started July 8th, 1981
 Date Completed " 14th, 1981
 Drilled by Dominik Drilling Ltd.
 Logged by H. Carlson

Footage		Formation	Sample Number	Sample Footage	Sample Width	Gold Sample	Gold Sludge	Remarks
From	To							
0.0	80.0	Casing.						
80.0	241.0	Intermediate flow rock. (Andesite?). Massive. Fresh. Very fine-grained to aphinitic. Medium-greenish-grey to medium-grey in colour. Some dark and light mottling may represent porphyritic texture. Silicification variable in the form of stringers, veinlets, blobs and blotches of white and grey quartz up to 1" thick, as follows: 80'-86' - 1-2% py, po, cpx, aspx, sph, 86'-91' - <1% disseminated, some 91'-96' - 1% in quartz, some in 96'-101' - 1%						

Date of Examination _____

DIAMOND DRILL RECORD

Hole No. GGW-1-81 Sheet No. R

Property GG-Carlson-Ginn
 Location Walker twp.
 Latitude _____
 Departure _____
 Bearing _____

Dip

 Total Footage _____

Elev. Collar _____
 Datum _____
 Date Started _____
 Date Completed _____
 Drilled by _____
 Logged by _____

Footage		Formation	Sample Number	Sample Footage	Sample Width	Gold Sample	Gold Sludge	Remarks
From	To							
		101'-106'-2% host rock.						
		106'-130'-<1% <1% sulphides, as above						
		130'-153.5'-1-2% " " " "						
		153.5'-178'-1-2% " " " "						
		178'-202.5'-2-3% " " " "						
		202.5'-236.5'-<1% " " " "						
241.0	286.0	Rock is still volcanic flow, but is lighter in colour, shows evidence of incipient shearing, brecciation and considerable cream-coloured, cherty alteration, possibly some epidote also.						
		241.5'-250.0'-1-2% sulphides, stringery and diss. py. and po.						
		251.5'-275.5'-<1% sulphides, mostly po.						
		275.5'-286.0'- " " " "						

Date of Examination _____

DIAMOND DRILL RECORD

Hole No. GGW-1-81 Sheet No. 3

Property GG-Carlson-Ginn
 Location Walker twp.
 Latitude _____
 Departure _____
 Bearing _____

Dip

 Total Footage _____

Elev. Collar _____
 Datum _____
 Date Started _____
 Date Completed _____
 Drilled by _____
 Logged by _____

Footage		Formation	Sample Number	Sample Footage	Sample Width	Gold Sample	Gold Sludge	Remarks
From	To							
286.0	329.0	Light greyish-green, hard, dense, aphanitic, intermediate-sialic lava flow. Some cherty silicification, some quartz veining and brecciation fillings. Sulphides (py. and po.) < 1% diss. mostly assoc. with silicification.						
329.0	336.0	Quartz-feldspar porphyry. One foot quartz vein 333'-334'. Fine diss. py. < 1%.						
336.0	373.0	Intermediate-sialic lava, as above. More incipient brecciation, and silicification more cherty than stringery. Heavier sulphide.						

Date of Examination _____

DIAMOND DRILL RECORD

Hole No. GGW-1-81 Sheet No. 4

Property GG-Carlson-Ginn
 Location Walker twp.
 Latitude _____
 Departure _____
 Bearing _____

Dip

 Total Footage _____

Elev. Collar _____
 Datum _____
 Date Started _____
 Date Completed _____
 Drilled by _____
 Logged by _____

Footage		Formation	Sample Number	Sample Footage	Sample Width	Gold Sample	Gold Sludge	Remarks
From	To							
		mineralization (py. and po.) $\approx 2\%$ From 356' down.						
373.0'	439.0'	Intermediate flow rock (andesite?) Medium-greenish-grey in colour; fine-grained to aphanitic. Silicification in form of veinlets, blotches, stringers, etc. $\approx 2-3\%$. Sulphide mineralization (py., po.) $\approx 2\%$ diss. From 356' down. Some talc 401'-413'(?).						
439.0'	457.0'	Quartz-feldspar porphyry. 4" diabase dikelet. at 443'. 6" quartz vein at 444'. Few flecks of py. and aspy. and streaks of dark mineral (sphalerite?). Overall $< 1\%$ sulphides.						

Date of Examination _____

DIAMOND DRILL RECORD

Hole No. GGW-1-81 Sheet No. 6

Property GG-Carlson-Ginn
 Location Walker Twp.
 Latitude _____
 Departure _____
 Bearing _____

Dip

 Total Footage _____

Elev. Collar _____
 Datum _____
 Date Started _____
 Date Completed _____
 Drilled by _____
 Logged by _____

Footage		Formation	Sample Number	Sample Footage	Sample Width	Gold Sample	Gold Sludge	Remarks
From	To							
		Grain gradation shows tops up the hole.						
		Bedding @ 60° to c/a. Individual beds from ≈ 8" to < 1/4" thick, locally silicified with bands, veinlets, blebs, etc. of quartz, most parallel to bedding. Sulphides diss. and in few places as replace- ments of thin beds. Py, aspy, po(?) probably overall < 1%.						
676.5	689.0	Probably originally sediments as above, but much epidote, chlorite and carbonate alteration, and more silicif- ication tend to obscure bedding planes.						
		End-of-hole @ 689'.						

Date of Examination _____

DIAMOND DRILL RECORD

Hole No. GGW-2-81 Sheet No. 1

Property GG-Carlson-Ginn
 Location Walker twp.
 Latitude _____
 Departure _____
 Bearing N 20° W Claim # L 610301

Collar	Dip							
-200'		-45°	Corr.					
-400'		-40°	-33°					
-600'		-40°	-33°					
-645'		-50°	-42.5°					
		-51°	-43°					
Total Footage		645'						

Elev. Collar _____
 Datum _____
 Date Started July 15, 1981
 Date Completed " 19 "
 Drilled by Dominik Drilling Ltd.
 Logged by H. Horvath

Footage		Formation	Sample Number	Sample Footage	Sample Width	Gold Sample	Gold Sludge	Remarks
From	To							
0.0	154.0	Casing.						
154.0	294.5	Mixed Ultra-mafic rock and volcanic rock (?)						
		Fine to coarse-grained. Medium to dark green in colour, mottled light and dark. Coarser sections show lots of chicken-feed texture (tremolite-actinolite?) or (spinel?) Fair amount of veinlety, blotchy, stringery alteration, mainly carbonate, quartz, with lesser epidote and a little talc-serpentine-chlorite. No readily visible sulphides. Proportion of volcanic rock increasing down the hole. Traces of sulphides from 258' down, initially <1% but increasing as porphyry is neared.						

Date of Examination _____

DIAMOND DRILL RECORD

Hole No. GGW-2-8 / Sheet No. 2

Property GG-Carlson-Ginn.
 Location Walker Twp.
 Latitude _____
 Departure _____
 Bearing _____

Dip

 Total Footage _____

Elev. Collar _____
 Datum _____
 Date Started _____
 Date Completed _____
 Drilled by _____
 Logged by _____

Footage		Formation	Sample Number	Sample Footage	Sample Width	Gold Sample	Gold Sludge	Remarks
From	To							
		Mainly po., lesser py., occasional trace of cpy., (some black sphalerite?).						
294.5	305.5	Quartz-feldspar porphyry, as in hole #1. Traces of sulphides, py., aspy., po., sphal.(?) <1%, mainly along fracture planes.						
305.5	645.0	Intermediate lava (andesite?). Medium to light green in colour. Aphanitic. Minor to moderate silicification in the form of white to grey quartz stringers and veinlets and incipient brecciation zones up to 1/2" thick at no consistent orientation. To @/a. Minor diss. sulphides (<1%), py., po., aspy., traces cpy., (sphal.?), most noted along quartz-filled fracture planes.						

End-of-hole @ 645'

Date of Examination _____

WALKER TWP.



42A10NE081 13 WALKER

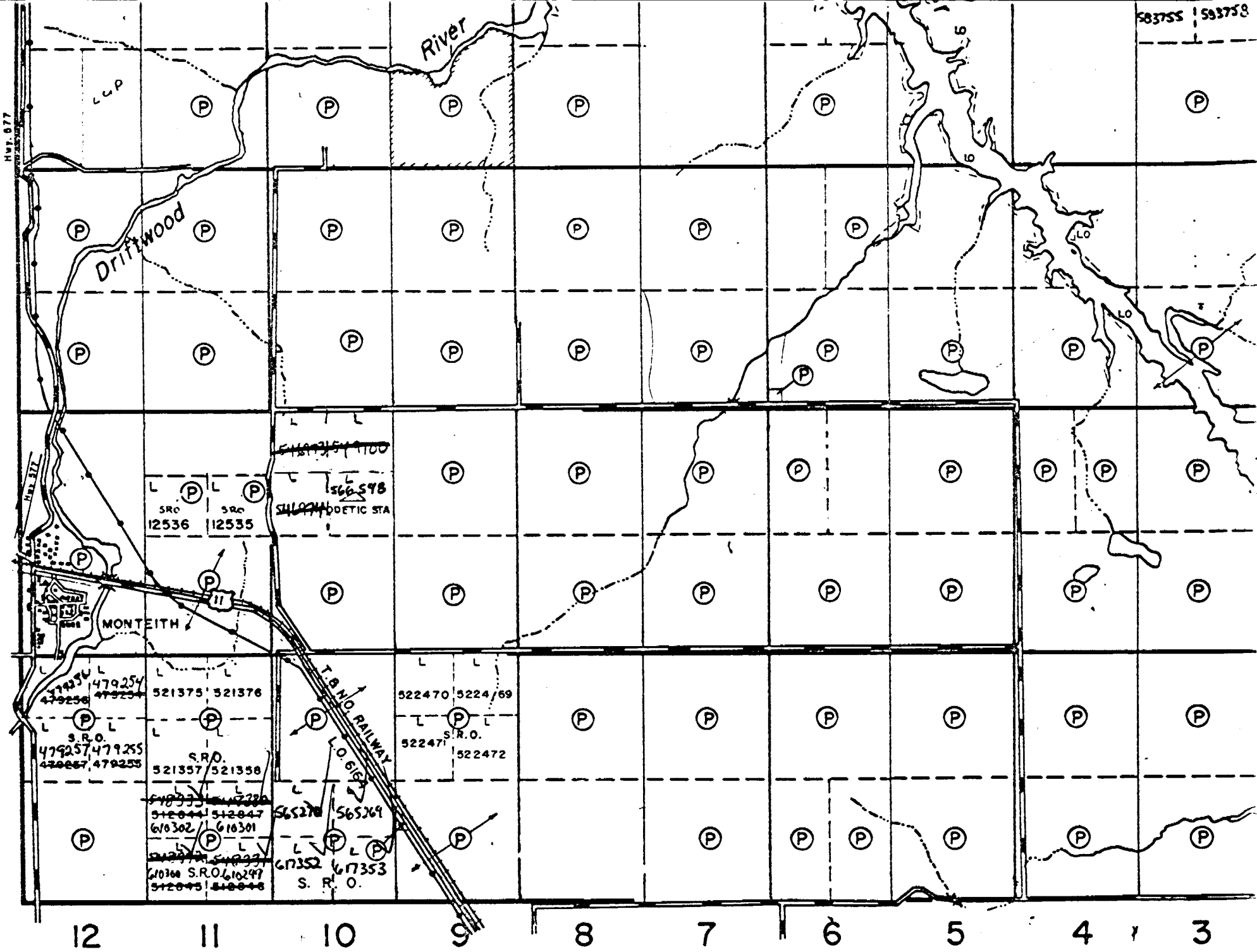
900

397-81

Walker Twp

M 396 Hugh Douglas Carlson

Clergue Twp.



583755 | 583758