



42A10NW0537 18 CLERGUE

010

Diamond Drilling

Township of Clergue

Report N^o: 18

Work performed by: Canadian Nickel Co. Ltd/ C. R. Scott

Claim N ^o	Hole N ^o	Footage	Date	Note
P 236783	40641	1200'	June/71	(1)

Notes:

(1) 5/72

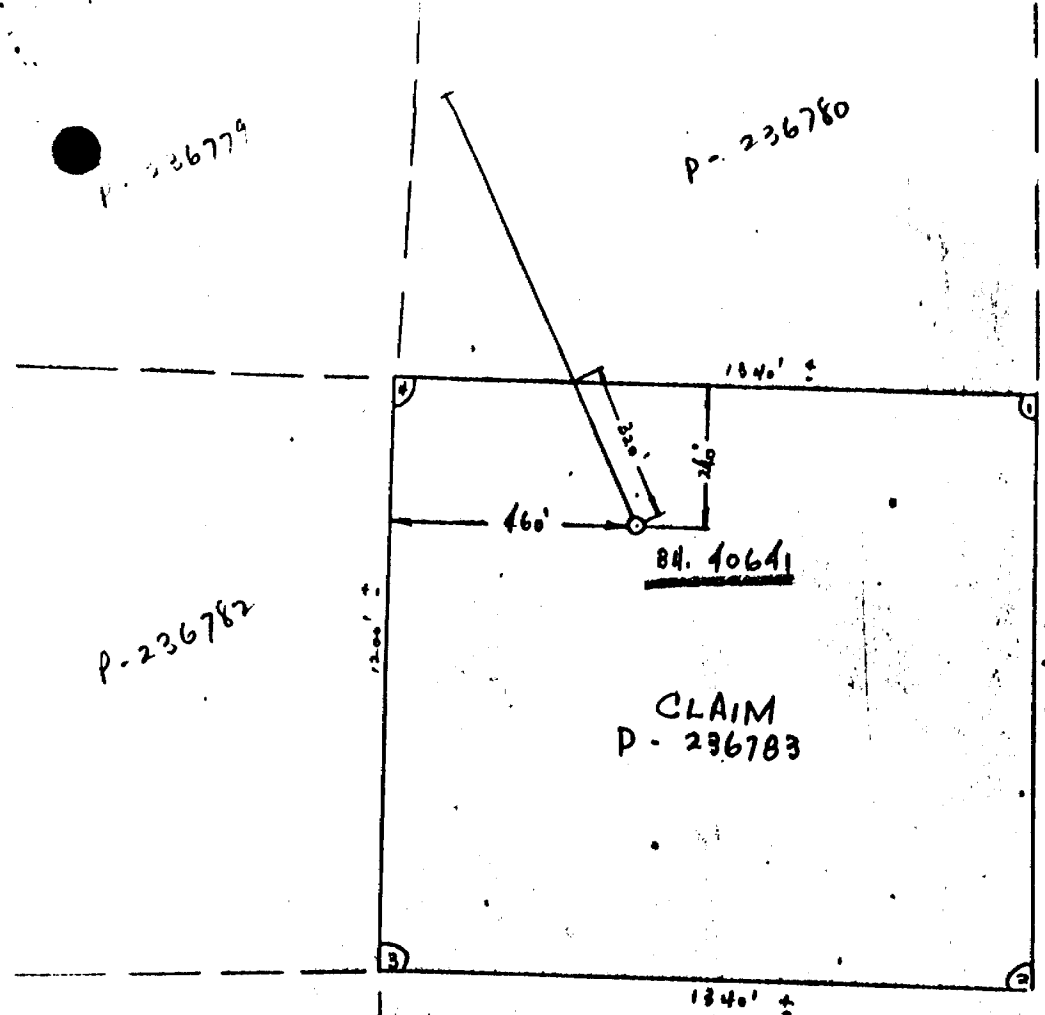
P-236779

P-236780

P-236782

P-236785

Lot 10
Lot 9



LOCATION SKETCH
 OF BOREHOLE 1 40641
 Located on Cl. P-236783
 NW 1/4 S 1/2 LOT 9 CONC. 2
 CLEARVIEW TWP. (M-337)
 PORCUPINE MINING DIVISION
 Scale: 1 inch = 400 ft.



BOREHOLE RECORD

DATE PROCESSED JAN 06, 1972

CHK'D.....

BOREHOLE# PROPERTY NTS# SH# ANOM# DEPTH AZIMUTH DIP LATITUDE DEPARTURE ELEVATION LEVEL
 40641-0 SCOTT-OPTION 42A10W 1200 30 00 -45 00 S 400 E 3600 DATE.....

INCLINATION AND TROPARI TESTS

DEPTH AZIMUTH DIP DEPTH AZIMUTH DIP DEPTH AZIMUTH DIP DEPTH AZIMUTH DIP DEPTH AZIMUTH DIP
 200 -40 00 400 -38 00 600 -34 00 800 -33 30 1000 -33 30

TOPS OF WEDGES

COMMENTS

LOGGED BY..B H YURIY STARTED..JUNE 24, 1971 COMPLETED..AUG 04, 1971 AXT TO L10.0 FT EXT TO FOOT HEATH & SHERWOOD 174 FT AX
 CASING LEFT CL 236783 460 FT E 240 FT S OF POST 4

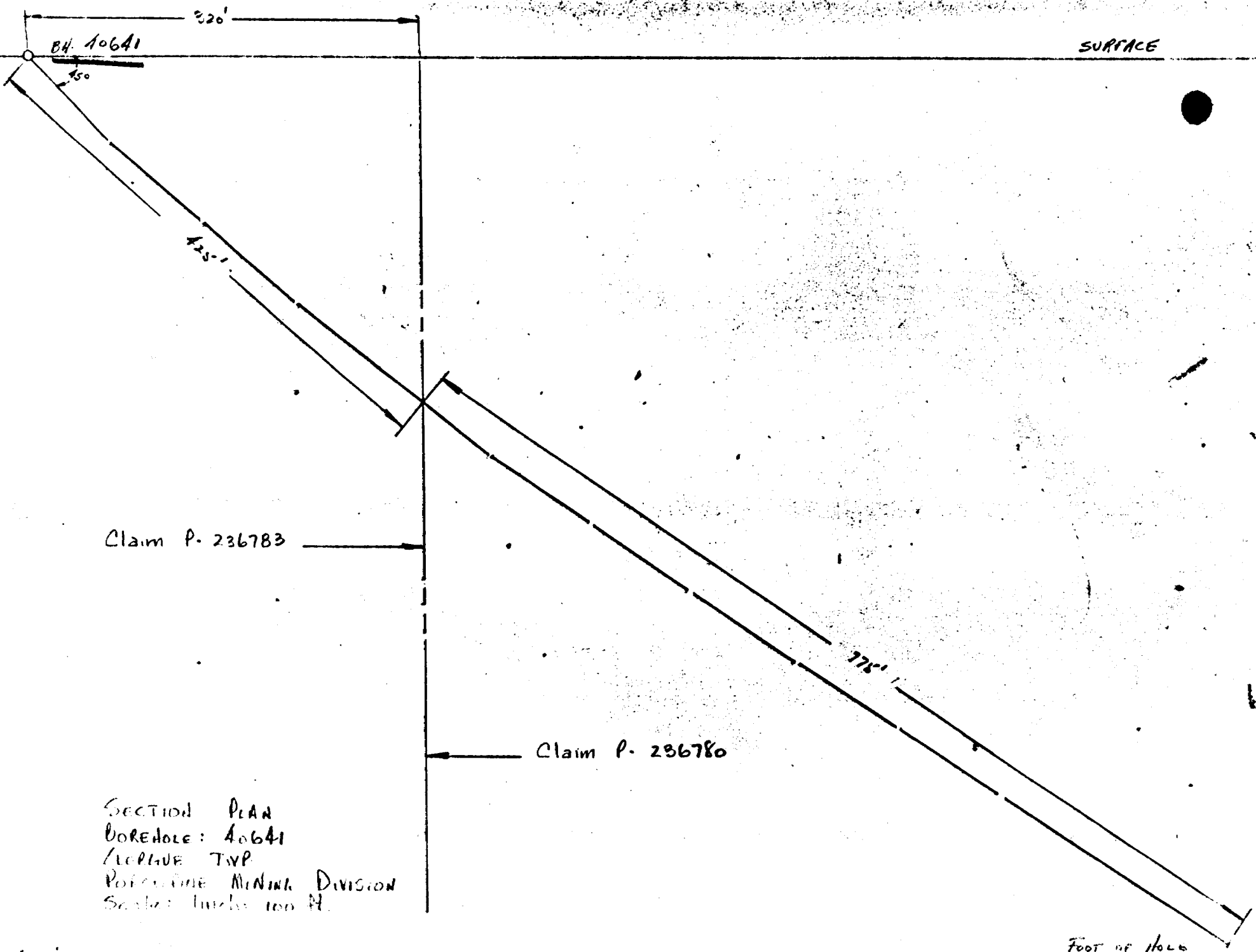
SAMPLE ENTRIES

DEPTH	LENGTH	MNZN	ROCK	DESCRIPTION	ANG
0.0	0.0			COLLAR	
168.0	168.0			OB SAND & GRVL SOC	
180.0	12.0	MVVW	UM	DK GY TO BLUE STGL FRCD NUM CARB- SRPN STRS LOCL PRPC-LIKE TXTR-FSP TALCOSIC MASS TO GRLR OLIVENE RELICT LOCL PYRN-RICH NON MTC FEW PY SPKS SRPD	
195.0	15.0	MVVW	UM	AS PREV ENTRY LESS FRCD	
201.3	6.3	MVVW	UM	AS PREV ENTRY DK GY LESS TALC	
203.8	2.5	TUFF	GY	TO LT GRN BNDD 50 NUM QTZ-CARB	50
				STRS LOCL AGLM VUGY AT MFC CT NON MIN STGL AC	
211.8	8.0	TUFF	AS	PREV ENTRY BNDG LESS DISTINCT	
				AC TO BASIC LOCL QTZ STRS	
223.2	11.4	TUFF	AS	PREV ENTRY BASIC COMP FEW SPKS PY LC 221.1-222.0	
235.0	11.8	MVVW	RHY	LT GY PRPC TXTR K-FSP RICH CT SHARP FSP LATH-LIKE TXTR BECOMING LESS DISTINCT FEW PY SPKS POSS SPH RARE	
244.8	9.8	MVVW	DCT	GY K-POOR PLW AT 240.9 LOCL MINOR QTZ FEW QTZ STRS FEW BASIC BNDS SPKS PY-PO 1% MASSIVE	
257.2	12.4	MVVW	DCT	AS PREV ENTRY FEW FINE QTZ-CARB STRS LOCL BXTD LOCL FINE DISS PY-PO	
271.2	14.0	MVVW	RHY	DK GY TO BK K-RICH CT BROAD FLINTY APNC FRCD 45 LOCL CHLC DISS PY FEW QTZ-CARB STRS	45
279.5	8.3	MVVW	DCT	AS AT 244.8 MASS TO PRPC TXTR NUM QTZ PHCRS (QZPR Q) FEW & Y SPKS	
286.1	6.6	MVW	DCT	AS AT 244.8 LOCL PY CUBES & BLBS 2- 3%	
293.2	7.1	MVVW	DCT	AS AT 244.8	
305.0	11.8	MVVW	DCT	AS AT 244.8 MORE QTZ (QZPR-LIKE)	
317.6	12.6	MVVW	DCT	AS AT 244.8 LOCL BXTD & AGMC MIN PY- PO FEW SPH SPKS	
330.6	13.0	MVW	RHY	AS AT 271.2 PY DISS & IN VINS LOCL 5-8% MORE MIN TOWARDS AGLM CT K-RICH LOCL STGL AGMC	

DEPTH	LENGTH	MNZN	ROCK	DESCRIPTION	ANG
336.4	5.8	MW	AGLM	LT GY TO BK RHY FGMS IN SLLY GRPC MTX SUB-AGLR TO RNDD FGMS WKLY MTC 1/2 PY-PO SPKS & BLBS PO MINOR 5-10% PY 15-20% LOCL CDTV	
338.9	2.5	MVW	MTSD	GRPC BK AGLM INCS AT CT CDTV FEW FINE CARB STRS FEW PY STRS & BLBS PO MINOR PY-PO 3-5%	
340.8	1.9		LC		
352.9	12.1	MVW	AGLM	AS AT 336.4 PY-PO 1-2%	
355.8	2.9	MW	AGLM	AS AT 336.4 PY-PO 10-15%	
362.7	6.9	MVVW	TFCS	MTSD GY TO LT GRN WITH SOME BK SLLY GRPC BNDS BNDD LOCL STGL AGMC NUM FINE CARB STRS LOCL CHLC FEW SPKS PY LC 356.5-357.7 358.8-360.0 360.4-361.7	40
370.3	7.6		TFCS	AS PREV ENTRY LC 364.6-365.8 367.3-368.1	
386.1	15.8		TFCS	MTSD AS AT 362.7 BNDD 60-70 STGL CRBD STRS & BLBS LOCL FEW PY SPKS LC 371.1-371.9 372.6-373.5 374.0-375.0 377.5-378.8 380.0-380.5 383.6-385.0	
391.2	5.1	MVVW	TFCS	MTSD AS AT 362.7 PY SPKS ALONG FRCS LOCL BNDD 45-50.	
405.0	13.8	MVW	TFCS	MTSD AS AT 362.7 ALTD TO CHL SOFT MIN LOCL PY 1-2% LC 392.0-393.0 397.7-398.6	
414.1	9.1	MVW	TFCS	MTSD AS AT 362.7 MIN LOCL 5% PY	
420.0	5.9	MVVW	TFCS	GY TO LT GRN NOT AS ALTD AS PREV LOCL CHLC BNDD 35 FEW PY SPKS & STRS	35
430.0	10.0	MVVW	TFCS	AS PREV ENTRY	
435.7	5.7	MVVW	TFCS	AS PREV ENTRY	
439.8	4.1	MVVW	TFCS	AS PREV ENTRY LOCL GRPC LOCL AGMC SLLY CRBD LOCL WKLY CDTV	
450.0	10.2	MVVW	RHDC	GY TO GRN K-RICH DCT FGMS SUB-AGLR CHLC AT TUFF CT FEW PY SPKS & CUBES FEW QTZ-CARB STRS	
476.5	26.5		RHDC	AS PREV ENTRY LOCL BASIC BECOMING QTZ-RICH	
478.3	1.8		QZPR	GY PRPC TXTR HARD RHY MTX FEW QTZ STRS NON MIN SHARP CT	
495.0	16.7		RHDC	AS AT 450.0 SHARP CT WITH QZPR	
500.3	5.3	MVVW	RHDC	AS AT 450.0 FEW SPKS PY SLLY CHLC	
505.9	5.6	MVW	RHDC	AS AT 450.0 PY-PO SPKS & BLBS LOCL 1-2% SLLY MTC 1/2	
507.4	1.5		LC		
517.5	10.1	MVVW	RHDC	AS AT 450.0 FEW SPKS PY POSS SPH LC 508.2-509.4 510.0-511.3 511.7-512.9 513.7-515.0 515.6-516.2	
525.0	7.5	MVVW	RHDC	AS AT 450.0 LOCL PY-PO SPKS 1-2% LOCL WKLY MTC	
542.6	17.6		RHDC	AS AT 450.0 LC 526.8-527.4 531.8-539.1 540.7-541.5 FEW PY SPKS NON MTC	
544.1	1.5		LC		

DEPTH	LENGTH	MNZN	ROCK	DESCRIPTION	ANG
550.0	5.9	MVVW	RHDC	AS AT 450.0 LOCL PY SPKS MINOR PO SLLY MTC	
552.1	2.1		LC		
558.3	6.2	MVW	AGLM	VOLC BX FIRST 2 FEET RHY FGMS GY LOCL STGL CHLC MIN PY DISS & CUBES 8-10% PO MINOR LOCL WKLY MTC FEW QTZ CARB STRS MORE HMGS TO LOWER CT	
570.0	11.7	MVVW	TUFF	AGLM LT GRN WITH BK-GRN CHLC BNDS LOCL BNDD 45-60 LOCL VUGY FEW FINE CARB STRS FEW FINE PY SPKS	
580.3	10.3	MVVW	TUFF	AS PREV ENTRY LOCL CHLC BECOMING STGL ALTD AT LOWER CT V SOFT FAULT GOUGE 573.5-574.5	
581.6	1.3	MVVW	RHY	LT GY HARD FEW SPKS PY SHARP LOWER CT 45	
593.0	11.4	MVVW	PRDT	DK GY MG PRXN RICH MASS LOCL V WKLY MTC SLLY SRPD UMDL	
605.0	12.0	MVVW	PRDT	GRN-BK MG-FG PRXN RICH SRPD MASS WKLY MTC 2 INCH MOTTLED WITH XTLNE CARB SERP STRS FINE SPKS NON-CDTV MT FEW FINE SPKS PO PY	
620.0	15.0	MVVW	PRDT	AS ABOVE	
635.0	15.0	MVVW	PRDT	AS ABOVE	
650.0	15.0	MVVW	PRDT	AS ABOVE NUM SERP STRS	
665.0	15.0	MVVW	PRDT	AS ABOVE NUM SERP STRS FE STND JTS	
680.0	15.0	MVVW	PRDT	AS ABOVE NUM SERP STRS FE STND JTS	
695.0	15.0	MVVW	PRDT	AS ABOVE NUM SERP STRS FE STND JTS	
710.0	15.0	MVVW	PRDT	AS ABOVE NUM SERP STRS FE STND JTS	
725.0	15.0	MVVW	PRDT	AS ABOVE NUM SERP STRS FE STND JTS	
731.0	6.0	MVVW	PRDT	AS ABOVE NUM SERP STRS FE STND JTS	
740.0	9.0	MVVW	AN	FG SHARP IREG CT LT GRN MG-FG MASS V WKLY MTC MOTTLED WITH DK GRN SPKS AMPB ALTD TO SERP SERP ABOUT 25% OF ROCK FINE SPKS MT IN SERP	
1035.0	295.0		AN	AS ABOVE	
1043.0	8.0	MVVW	AN	AS ABOVE 4 INCH PRDT AT 1040.0	
1046.7	3.7	MVVW	PRDT	GRN-BK MG-FG SRPD MASS STGL MTC 6 INCH RLCT GRLR TXTR FINE SPKS MT CTS SHARP IREG	
1048.0	1.3	MVVW	AN	AS TO 740.0 MODY MTC CTS SHARP IREG	
1060.0	12.0	MVVW	PRDT	AS TO 1046.7 LOCL FEW CARB-SERP STRS	
1075.0	15.0	MVVW	PRDT	AS TO 1046.7	
1090.0	15.0	MVVW	PRDT	AS TO 1046.7	
1105.0	15.0	MVVW	PRDT	AS TO 1046.7	
1120.0	15.0	MVVW	PRDT	AS TO 1046.7	
1130.0	10.0	MVVW	PRDT	AS TO 1046.7	
1139.7	9.7	MVVW	PRDT	AS TO 1060.0 WKLY MTC AT CT SHARP	
1150.0	10.3	MVVW	PRDT	UB GY FG ALTD HLY CRBD NON-MTC SOFT CT ZONE CARB STRS & FOTD 45	
1157.0	7.0	MVVW	PRDT	AS PREV ENTRY CT SHARP 45	
1165.0	8.0	MVVW	RHY	LT HY FG HARD MASS TO LOCL FOTD 45 OCC STR XLINE CARB	
1200.0	35.0		RHY	AS PREV ENTRY FOOT OF HOLE	

SURFACE



Claim P. 236783

Claim P. 236780

SECTION PLAN
BOREHOLE: 40641
ALPINE TWP
POLK COUNTY MINING DIVISION
Scale: 1 inch = 100 ft.

Foot of hole