



010

# Diamond Drilling

Township of Clergue

Report N<sup>o</sup>: 13

Work performed by: Dominion Gulf Co.

Claim N <sup>o</sup>	Hole N <sup>o</sup>	Footage	Date	Note
L. 57175	12	628'	Mar/52	

Notes:

PROPERTY

CLERGUE

NE 1/4 N 1/2 Lot 10, Con 3

L. 157171

HOLE NUMBER 12 (location 4)

SHEET NUMBER 1

SECTION FROM 0 TO 553

## DIAMOND DRILL RECORD

LOCATION: LAT. O N  
DEP. 1400 E

STARTED March 22, 1952

ELEVATION OF COLLAR

COMPLETED April 2, 1952

DATUM

ULTIMATE DEPTH 628'

DIRECTION AT START: BEARING N 32° E  
DIP 45° at surface, 44° at 300' and 628'

PROPOSED DEPTH 650'

DEPTH FEET	FORMATION	SAMPLE NO	WIDTH OF SAMPLE	GOLD %	SLUDGE GOLD %
0-97	Casing - sand, gravel, boulders				
97-553	<p>Serpentinized Dunite-</p> <p>Fine to medium-grained, massive, uniform, black in colour, changing to a mottled light green and black at about 385'. Completely serpentinized. Olivine pseudomorphs comprise 90% of the rock as a whole, are plainly visible with the aid of a glass. A small percentage of leucoxene is evident (&lt; 3%).</p> <p>Has an incipient fibre development (very thin parallel streaks) to 387, and a weak fibre development from 387 to 553 (stringers mostly &lt; 1/16").</p> <p>Magnetite is present as thin stringers and as fine interstitial material, - estimated at 15% to 170, then decreases to about 10% to 508, and increases back to 15% from 508 to 553.</p> <p>Detailed description of dunite - secondary features -</p>			3-1-89	

NORTHERN MINER PRESS LIMITED TORONTO STOCK FORM NO. 501 REV. 9-44

DRILLED BY Heath and Sherwood

*Drill core is stored at the drill site*

SIGNED

T. Parks

PROPERTY

CLERGUE

HOLE NUMBER 12

SHEET NUMBER 2

SECTION FROM 97 TO 553

(97 - 147)

## DIAMOND DRILL RECORD

LOCATION: LAT. ....  
DEP. ....

ELEVATION OF COLLAR .....

DATUM .....

DIRECTION AT START: BEARING .....

DIP .....

STARTED .....

COMPLETED .....

ULTIMATE DEPTH .....

PROPOSED DEPTH .....

DEPTH FEET	FORMATION	SAMPLE NO	WIDTH OF SAMPLE	GOLD \$	SLUDGE GOLD \$
97-122	Serpentinized dunite - Almost complete serpentinization - olivine pseudomorphs faintly visible under glass - f. g. massive texture, black colour - No fibre > 1/16", a few thin stringers < 1/16" magnetism uniform and strong - est'd, 15% magnetite as thin stringers and fine material bounding olivine pseudomorphs, magnetite stringers as follows - 1 1/4" wide at 45° to core long axis associated with a serpentine slip 1 1/16" " 45° " " " " 1 1/16" " parallel " " " very thin fibre 2 1/16" " 45° " no visible association 1 1/16" " 30° " associated with very thin fibre. 1 1/8" " 45° " " serp.-carbonate 1/4" wide. In addition about 10 serpentine slips with no associated magnetite				B.I.R. Specimen 110
122-147	General description same as last box. - no fibre - Magnetite stringers - 1 1/16" wide at 20° to core long axis - no visible association 1 1/2" " 10° " " associated with serpentine slip 1 1/16" " 10° " " no visible association 2 1/16" " 45° " " bounding 1/4" carbonate stringer				134

NORTHERN MINER PRESS LIMITED, TORONTO, STOCK FORM NO. 501 REV. 9-44

DRILLED BY Heath and Sherwood

SIGNED T. Parks

PROPERTY CLERGUE

HOLE NUMBER 12  
 SHEET NUMBER 3  
 SECTION FROM 97 TO 553  
 (147 - 170)

# DIAMOND DRILL RECORD

LOCATION: LAT.....  
 DEP.....  
 ELEVATION OF COLLAR.....  
 DATUM.....  
 DIRECTION AT START: BEARING.....  
 DIP.....

STARTED.....  
 COMPLETED.....  
 ULTIMATE DEPTH.....  
 PROPOSED DEPTH.....

DEPTH FEET	FORMATION	SAMPLE NO.	WIDTH OF SAMPLE	GOLD \$	SLUDGE GOLD \$	
	2 1/16" wide at 45° to core long-axis - associated with serpentine slips					
	8 very thin 45° " " " " " "					
		6208	122-123	12"	Fe Ni Cr	
147-170	Uniform, massive, serpentinization complete. Olivine pseudomorphs still visible, comprise 90% plus. 150-152 irregular veins of soft green - white material, probably mostly carbonate. Magnetite stringers -					
	1 1/16" wide at 45° associated with serpentine slip					
	2 1/32" " 90° to core long-axis with no evident association					
	1 1/32" " 45° " " " " " "					
	1 1/2" " 20° " in multiple thin stringers associated with carbonate					
	1 1/16" " 30° " associated with irregular thin fibre.					
	1 1/16" " 25° " no evident association					B.I.R. 153
	1 1/4" " 45° " associated with carbonate					
	3 1/8" " 80° " no evident association					

DRILLED BY Heath and Sherwood

SIGNED T. Parks

PROPERTY CLERGUEHOLE NUMBER 12SHEET NUMBER 4**DIAMOND DRILL RECORD**SECTION FROM 97 TO 553

(170- 216)

LOCATION: LAT.....  
DEP.....

STARTED .....

ELEVATION OF COLLAR .....

COMPLETED .....

DATUM.....

ULTIMATE DEPTH .....

DIRECTION AT START: BEARING.....  
DIP.....

PROPOSED DEPTH .....

DEPTH FEET	FORMATION	SAMPLE NO	WIDTH OF SAMPLE	GOLD \$	SLUDGE GOLD \$	
170-195	Massive completely serpentized dunite, as before. Magnetite content lower, est'd, 10%. Fibre 6 at 1/16"					
1	1/32" wide // to core long-axis no evident association					
1	1/2" " 45° " " as three thin stringers					
1	1/4" 45° " " short fibre intergrown and on sides					
1	1/8" // " " assoc. incipient fibre				B.I.R.	182
1	1/4" 45° " " assoc. irregular fibre in centre and on sides					
2	1/8" 80° " " no evident association					
1	2" of about 40% magnetite associated with discontinuous fibre					
1	1/4" 45° associated with fibre					
1	1/8" 45° " " carbonate					
1	1/16" 45° " " fibre					
195-216	Core as before. Fibre 3 @ 1/16 in addition to incipient fibre at 45° to core longaxis at 195.3 2" of serp. - carb. alteration with 1/8" magnetite and 3 1/16" discontinued fibre stringers magnetite stringers					
1	1/16 80° assoc.'d. fibre					
2	1/4" 45° " serp. slips				B.I.R.	213
4	1/32 20° no evident assoc'n.					
2	1/8" 45° assoc'd 1/4" of carbonate					
2	1/16" 60° " serp. slips.					

NORTHERN MINER PRESS LIMITED TORONTO STOCK FORM NO. 501 REV. 4-44

DRILLED BY HEATH AND SHERWOODSIGNED T. Parks

PROPERTY CLERGUEHOLE NUMBER 12SHEET NUMBER 5

## DIAMOND DRILL RECORD

SECTION FROM 97 TO 553

(216 - 264)

 LOCATION: LAT. ....  
 DEP. ....  
 ELEVATION OF COLLAR .....  
 DATUM .....  
 DIRECTION AT START: BEARING .....  
 DIP .....

 STARTED .....  
 COMPLETED .....  
 ULTIMATE DEPTH .....  
 PROPOSED DEPTH .....

DEPTH FEET	FORMATION	SAMPLE NO	WIDTH OF SAMPLE	GOLD \$	SLUDGE GOLD \$	
	At 211 1" of magnetite interbanded with discontinuous fibre, carbonate - amorphous serpentine					
216-240	Marked incipient fibre development at 50° to 60° to core long axis magnetic content est'd 10% Fibre 3 @ 1/16 magnetic stringers - 5 1/8" 80° no association					
	2 1/8 45° " "					
	1 1/4 70° " "	6209	222-223	12"	Fe	
	1 1/16 10° " "				Ni	
	1 1/8 90° " "				Cr.	
	1 3/4" 80° assoc. 2 1/16" fibre on sides, discontinuous					
	1 1/8 45° " "	"	"		B.I.R.	239
	1 1/8 10° " serp. slip					
	2 1/16 60° no assoc'n					
240-264	Rock as before. Weak incipient fibre development. Leucoxene present in minor amount. Fibre 1 at 1/8" and 3 at 1/16" 1" of hard green-white alt'n at 255 and irregularly from 257 to 259 magnetite stringers - 3 1/16 45° no association					
	1 1/2 45° " "					
	1 1/16 45° assoc'd with serpentine slip					
	3 1/16 80° no association					

NORTHERN MINER PRESS LIMITED, TORONTO, STOCK FORM NO. 501 REV. 9-44

DRILLED BY Heath and SherwoodSIGNED T. Parks

PROPERTY CLEGGUE

HOLE NUMBER 12

SHEET NUMBER 6

# DIAMOND DRILL RECORD

SECTION FROM 97 TO 553

(264 - 289)

LOCATION: LAT. \_\_\_\_\_  
 DEP. \_\_\_\_\_

STARTED \_\_\_\_\_

ELEVATION OF COLLAR \_\_\_\_\_

COMPLETED \_\_\_\_\_

DATUM \_\_\_\_\_

ULTIMATE DEPTH \_\_\_\_\_

DIRECTION AT START: BEARING \_\_\_\_\_  
 DIP \_\_\_\_\_

PROPOSED DEPTH \_\_\_\_\_

DEPTH FEET	FORMATION	SAMPLE NO	WIDTH OF SAMPLE	GOLD \$	SLUDGE GOLD \$	
	1 1" 45 assoc. fibre					B.I.R. 263
	1 1" 45 no assoc'n					
	1 1/4" 45 " "					
	3 1/8" 45 " "					
	1 1/16 30 " "					
	1 1/8 80 " "					
	3 1/8 45 assoc'd hd. green alt'n					
	1 1" irregular " " "					
264-289	Massive, uniform serp'd dunite. Black on a dry surface, light green when wet Leucoxene < 3% Incipient fibre uniformly throughout, 45° to core long axis Most of the fine magnetite has the same streaky habit. Fibre 2 @ 1/16; 1 @ 1/8 assoc. picrolite. magnetite stringers					
	4 1/8 45° assoc'd with fibre					
	2 1/16 45° " " "					
	1 1/8 30° " " "					B.I.R. 288
	1 1/8 parallel assoc'd with serp. slip					
	2 1/8 70° no evident assoc'n					
	1 1/4 45 assoc. fibre					
	1 1/4 60° no assoc.					

DRILLED BY Heath and Sherwood

SIGNED T. Parks

PROPERTY CLEGGUE

HOLE NUMBER 12

SHEET NUMBER 7

# DIAMOND DRILL RECORD

SECTION FROM 97 TO 553

(289 - 337)

LOCATION: LAT. ....  
 DEP. ....  
 ELEVATION OF COLLAR .....  
 DATUM .....  
 DIRECTION AT START: BEARING .....  
 DIP .....

STARTED .....  
 COMPLETED .....  
 ULTIMATE DEPTH .....  
 PROPOSED DEPTH .....

DEPTH FEET	FORMATION	SAMPLE NO.	WIDTH OF SAMPLE	GOLD \$	SLUDGE GOLD \$	
289-313	Massive, as before. Olivine pseudomorphs almost indistinguishable Incipient fibre development weak from 307 to 313. Fibre 7 @ 1/16 magnetite stringers 2 1/16 15° assoc'd serpentine slip 1 1/4 70° " 3 1/16" fibre stringers 1 1/8 30° " 1 1/16" " " 3 1/16 45 to 60 no evident assoc'n 2 1/8 45 " " " 5 1/16 70 " " " 4 1/16 45 assoc'd fibre 1 1/8 45 " " 1 3/4" 45 multiple, assoc'd with 3 1/16" fibre					B.I.R. 313
313-337	Incipient fibre development is pronounced. Overall magnetite est'd 10% No loggable fibre, just incipient fibre stringers as fine streaks magnetite stringers 2 1/8 45° no evident association 1 1/16 15° " " " 2 1/8 45° assoc'd slips (serp.) 1 1/16 30° no evident association 2 1/16 15° assoc'd thin fibre					B.I.R. 337
		6210	322-323	Fe Ni Cr.		



PROPERTY CLERGUEHOLE NUMBER 12SHEET NUMBER 8**DIAMOND DRILL RECORD**SECTION FROM 97 TO 553  
(337 - 387)LOCATION: LAT. ....  
DEP. ....

ELEVATION OF COLLAR .....

DATUM .....

DIRECTION AT START: BEARING .....

DIP .....

STARTED .....

COMPLETED .....

ULTIMATE DEPTH .....

PROPOSED DEPTH .....

DEPTH FEET	FORMATION	SAMPLE NO.	WIDTH OF SAMPLE	GOLD \$	SLUDGE GOLD \$	
337-362	Massive, uniform, light green when wet, black when dry streakiness at about 60° to core long axis Fibre 16 at 1/16; 2 at 1/8 generally 60° paralleling incipient fibre, occasionally cuts across it, magnetite stringers 2 1/8" wide at 20° assoc. with fibre 2 1/16" 60° " 2 1/16" parallel " 1 1/8" 45° no evident association Three fibre stringers have no associated magnetite, the remainder have magnetite interbanded in about a 2 to 1 volumetric ratio Overall magnetite estimated at 10%, as stringers and interstitial fine material	Incipient fibre				
		"			B.I.R.	360
		"				
362-387	Massive, uniform, Weak incipient fibre development 45 to 60° to core long axis Rock irregularly mottled light-green and green black when wet. Olivine pseudomorphs just as prevalent in light patches as in dark patches. Serpentinization is complete. Cause of mottling is unknown. Magnetite est'd 10% magnetite stringers 1 1/16 45° assoc. fibre 2 1/16" 20° " 1/8" fibre 1 1/8" 30° " 1/16" fibre 2 1/8" 30° no evident association 1 1/16 parallel with diverging offshoots, no evident association					
					B.I.R.	385

NORTHERN MINER PRESS LIMITED, TORONTO, STOCK FORM NO. 501 REV. 4-44

DRILLED BY

Heath and Sherwood

SIGNED

T. Parks

PROPERTY CLERGUE

HOLE NUMBER 12

SHEET NUMBER 9

# DIAMOND DRILL RECORD

SECTION FROM 97 TO 553  
(387 - 435)

LOCATION: LAT. \_\_\_\_\_  
 DEP. \_\_\_\_\_  
 ELEVATION OF COLLAR \_\_\_\_\_  
 DATUM \_\_\_\_\_  
 DIRECTION AT START: BEARING \_\_\_\_\_  
 DIP \_\_\_\_\_

STARTED \_\_\_\_\_  
 COMPLETED \_\_\_\_\_  
 ULTIMATE DEPTH \_\_\_\_\_  
 PROPOSED DEPTH \_\_\_\_\_

DEPTH FEET	FORMATION	SAMPLE NO	WIDTH OF SAMPLE	GOLD \$	SLUDGE GOLD \$	
387-411	Massive serp'd dunite. Completely serp'd. Mottled light green and green-black when wet. Incipient fibre has died out to a faint streakiness. Magnetite estimated at 10%. magnetite stringer - 1 1/16" at 60° to C.L.A. associated with fibre 1 1/16" 60° " no evident association 1 1/16" 45° " " " " " 1 1/16" parallel " " " " " 1 1/16" 30° " " " " " 1 1/16" 70° " " " " " 1 1/4" 45° " Associated with slight fibre development 1 1/16" 15° " no evident association					B.I.R. 411
411-435	Completely serp d dunite. Olivine pseudomorphs locally indistinguishable. Fine to medium grained. Increase in fibre. 12 stringers 1/16" in addition to some < 1/16" About 1/2 of the fibre has no evident associated magnetite magnetite stringers 1 at 1/8" thick 45° associated with fibre 1 1/8" 5° cuts fibre, but has parallel fibre along one side 1 1/8" 30° cuts fibre. has no association evident 1 1/16 30° no evident association 1 1/4 30° associated with slip fibre 1 1/16 45 " " fibre					B.I.R. 428 Sample 6211 422 - 423 F1 N1

NORTHERN MINER PRESS LIMITED TORONTO STOCK FORM NO 601 REV 9-44

DRILLED BY

Heath and Sherwood

SIGNED

T. Parks

PROPERTY CLERGUEHOLE NUMBER 12SHEET NUMBER 10

## DIAMOND DRILL RECORD

SECTION FROM 97 TO 553  
(435 - 484)LOCATION: LAT. ....  
DEP. ....

ELEVATION OF COLLAR .....

DATUM .....

DIRECTION AT START: BEARING .....

DIP .....

STARTED .....

COMPLETED .....

ULTIMATE DEPTH .....

PROPOSED DEPTH .....

DEPTH FEET	FORMATION	SAMPLE NO	WIDTH OF SAMPLE	GOLD \$	BLUDGE GOLD \$	
435-460	1 1/8 45 associated with talcose shearing Serpentinized dunite, as before. Fibre increasing 25 seams at 1/16", 2 at 1/8" at 45° to core L.A. With about 80% of the fibre stringers there is no noticeable magnetite development. At 456 2" of soft green white alteration				Cr	
	magnetite stringers 1 at 1/8" 45° association with fibre				B.I.R.	458
	8 at 1/16" 45° " " "					
	1 at 1/16" parallel no evident association					
	2 1/8 45° associated with talcose slip					
	1 1/8 cutting fibre but with some fibre paralleling and bounding					
460-484	Rock as before, irregularly mottled. Fibre - 18 at 1/16" at least five times as many less than 1/16", mostly at 45° to core long-axis.					
	magnetite stringers 1 1/8" 20° associated with talcose slip					
	14 1/16" or less 45° " " serp. slips or fibre					
	3 1/16 70° " " serp. slips				B.I.R.	475
	1 1/8 70° " " " "					
	2 1/8 parallel then serpentine slip in the middle					
	3 1/8 45° associated with serpentine talc slip					
	2 1/8 45° " " fibre					

NORTHERN MINER PRESS LIMITED, TORONTO, STOCK FORM NO 501 REV 9 44

DRILLED BY Heath and SherwoodSIGNED T. Parks

PROPERTY CLERGUE

HOLE NUMBER 12

SHEET NUMBER 11

# DIAMOND DRILL RECORD

SECTION FROM 97 TO 553

(484 - 532)

LOCATION: LAT. ....

STARTED .....

DEP. ....

COMPLETED .....

ELEVATION OF COLLAR .....

DATUM .....

ULTIMATE DEPTH .....

DIRECTION AT START: BEARING .....

PROPOSED DEPTH .....

DIP .....

DEPTH FEET	FORMATION	SAMPLE NO	WIDTH OF SAMPLE	GOLD %	SLUDGE GOLD %	
	As before, in about 80% of the cases no magnetite development with the fibre Magnetism weaker, estimated 7% magnetite					
484-508	Rock as before, massive, irregularly mottled. Fibre increasing, 48 at 1/16" probably 100 < 1/16" all at 45 to 60 to core long axis. The stringers are often discontinuous or in an echelon fashion magnetisms weak to medium In 80 to 90% of the cases, there is no detectable magnetite associated with the fibre. magnetite stringers 2 at 1/16" 30° cutting fibre and associated with talcose slip 1 1/16 60° associated with fibre 1 1/16 60° " " talc. serpentine slip 2 1/16" 45° " " talcose shearing 2 1/16" 45° " " fibre 1 1/8" 45° " " talc. serpentine slip					B.I.R. 506
508-532	Serpentinized dunite, Talc. serpentine slip more frequent. Core is blocky and broken, otherwise as before, Fibre decreasing, 10 at 1/16", about 30 < 1/16" Most of the fibre in this box has magnetite associated with it. Usually the fibre is a thin selvage on a magnetite stringer. Overall magnetite increased to about 15%					

PROPERTY CLERGUEHOLE NUMBER 12SHEET NUMBER 12

## DIAMOND DRILL RECORD

SECTION FROM 97 TO 553  
(532 - 553)LOCATION: LAT. ....  
DEP. ....  
ELEVATION OF COLLAR .....  
DATUM .....  
DIRECTION AT START: BEARING .....  
DIP .....STARTED .....  
COMPLETED .....  
ULTIMATE DEPTH .....  
PROPOSED DEPTH .....

DEPTH FEET	FORMATION	SAMPLE NO	WIDTH OF SAMPLE	GOLD \$	SLUDGE GOLD \$	
	magnetite stringers 14 at 1/16" at 45° - 60° associated with talc. serpentine slips				P.I.R.	526
	1 1/8 60° no evident association			Sample	6212	
	17 1/16" 45°-70° associated with fibre			522-523	Fe.	
	2 1/16 80° "	" "			Ni.	
	2 1/8 45° "	" "			Cr.	
532-553	Serpentinized dunite as before. Core blocky and broken, especially near the contact, where serpentine slips are frequent. Estimated 15% magnetite. Contact at 553, in lost core No fibre > 1/16", a few stringers < 1/16" magnetite stringers 532 - 553					
	3 at 1/8" 45° to core long axis - thin fibre on the edges				B.I.R.	545
	1 1/16" 30° " no evident association					
	1 1/16" 45° " thin fibre on edges					
	2 1/8" 45° " no evident association					
	Lost core 539.5 - 540; 548.5 - 549; 552.5 - 553.2					

NORTHERN MINER PRESBY LIMITED TORONTO STOCK FORM NO 801 REV 9.44

DRILLED BY

HEATH AND SHEPWOOD

SIGNED T. Parks

PROPERTY

CLERGUE

HOLE NUMBER 12

SHEET NUMBER 13

SECTION FROM 97 TO 628  
(553-628)

## DIAMOND DRILL RECORD

LOCATION: LAT. \_\_\_\_\_  
 DEP. \_\_\_\_\_  
 ELEVATION OF COLLAR \_\_\_\_\_  
 DATUM \_\_\_\_\_  
 DIRECTION AT START: BEARING \_\_\_\_\_  
 DIP \_\_\_\_\_

STARTED \_\_\_\_\_  
 COMPLETED \_\_\_\_\_  
 ULTIMATE DEPTH \_\_\_\_\_  
 PROPOSED DEPTH \_\_\_\_\_

DEPTH FEET	FORMATION	SAMPLE NO	WIDTH OF SAMPLE	GOLD \$	SLUDGE GOLD \$
553-628	Pyroxenite - massive, light grey, fairly hard, heavy, medium grained flecked with 15% black splotches which may be antigorite or olivine pseudomorphs. Non - magnetic, although occasional (< 1%) grains of magnetite are noticeable. Composed 80% plus of lath like augite, densely interwoven.				
	554.5 - 557.5 lost core			B.I.R.	571
	592 - 602 finer grained with a bluish tinge				587
					601
					624

NORTHERN MINER PRESS LIMITED, TORONTO, STOCK FORM NO. 501 REV. 9-44

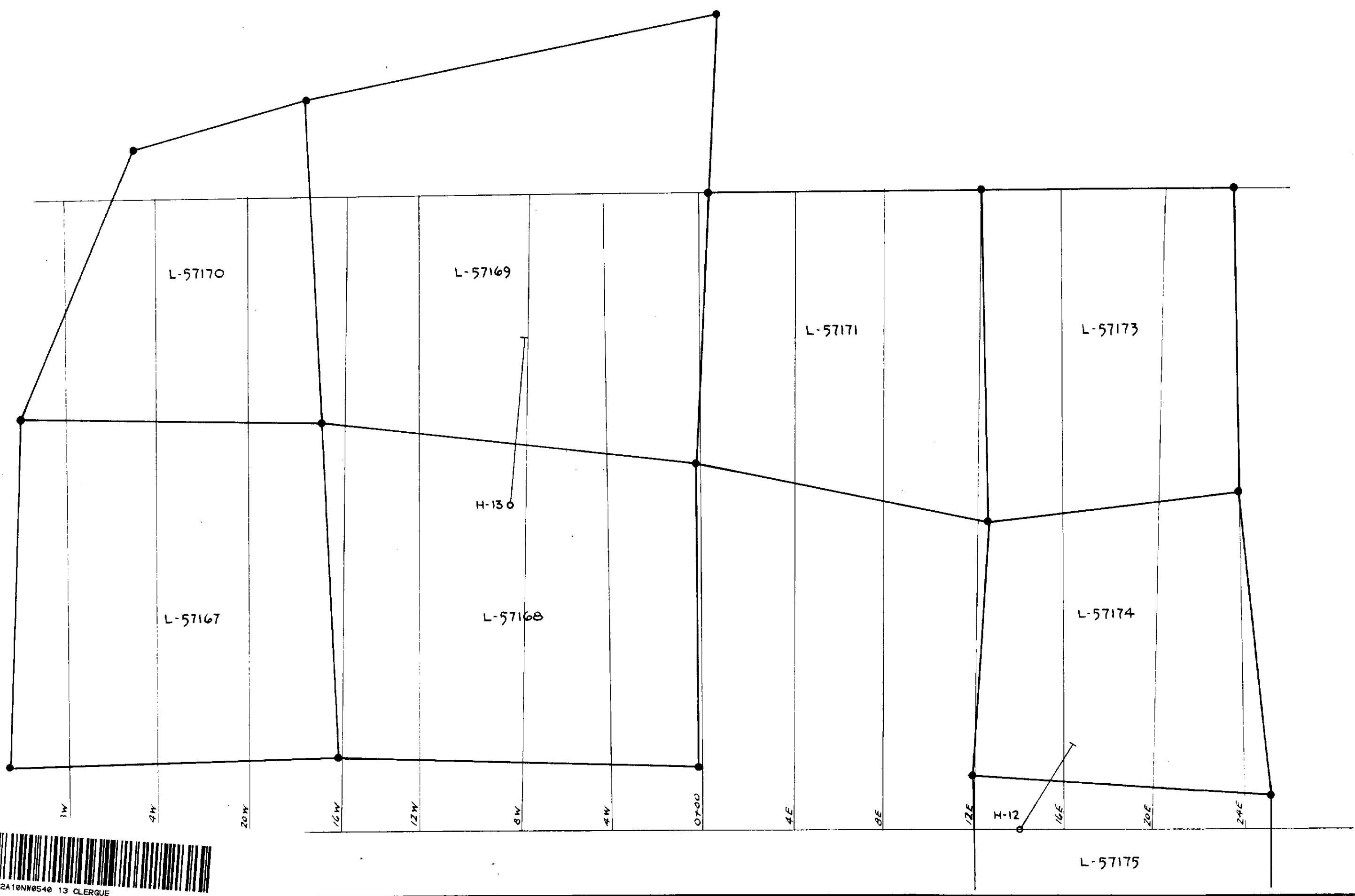
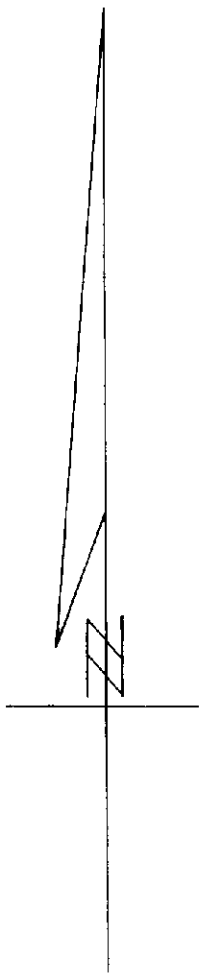
DRILLED BY

HEATH AND SHERWOOD

SIGNED

T. Parks

L-57168



DOMINION GULF COMPANY  
 LOCATION OF DIAMOND DRILL HOLES 12,13.  
 CLERGUE TWP. CLS. - GRP. I  
 PROVINCE OF ONTARIO  
 SCALE : 1" = 400' JULY. 14, 1952.



200

17x23