



42A10SE0004 OM91-089 STOCK

010

## INTRODUCTION

This report is to accompany the OMIP Application for Grant regarding designated program number OM91-089.

The report consists of five parts:

i) Technical Aspects

ii) Accounting Aspects

iii) Tables for work done and cost

iv) Drill logs

v) Maps

Location and claim maps follow.

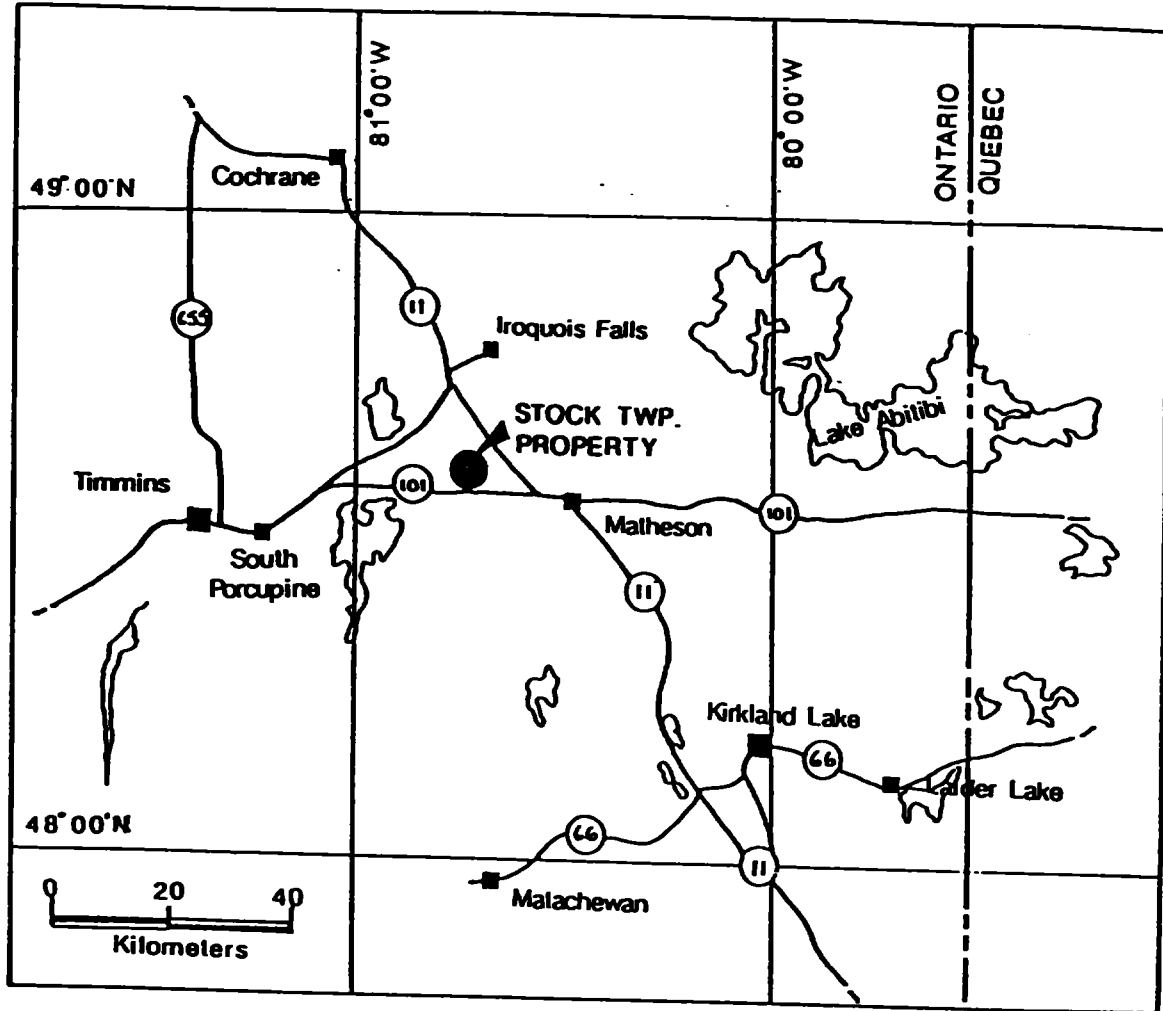


FIGURE 1: GENERAL LOCATION PLAN OF THE STOCK TOWNSHIP PROPERTY OF ST ANDREW GOLDFIELDS LTD.



## TECHNICAL ASPECTS OF EXPLORATION PROGRAM

### Objectives

The fundamental objectives of our exploration program are to replace and augment ore reserves in order that our mining operation may continue. The 1991 specific objectives were to:

- i) explore for downward and onstrike continuation of the ore zones.
- ii) explore for other "en echelon" plunging ore zones similar to the known zones.
- iii) provide drill access for the West zone and for the central area between the West and N2 (Pyritic Porphyry) Zones.

### Methodology and Results

A total of 8,117 feet were diamond drilled in 39 holes in 1991. This drilling was in exploration of the extensions of the N2 (Pyritic Porphyry), Feldspar Porphyry and West Zones. Also, drilling was done to the north in search of parallel or en echelon zones. Table 1 is a detailed listing of the 1991 drill holes. The drill logs are in the appendix and the drill hole collars, directions and dips are depicted on the maps in the appendix.

A total of 1,447 feet of exploration development were done to provide drill access. This development is detailed in Table 2 and depicted in the longitudinal section and maps in the appendix. The 691 and 694 declines will be used for continuing exploration in 1992 and in subsequent years.

The 592 drill drift and associated 5th level drilling (see map pocket #2) were done on the western extremity of the mine to test for continuations of the 503 feldspar porphyry satellite and the 601 and 701 ore blocks belonging to the N2 pyritic porphyry zone. Also, drilling was done to the north to search for other satellites en echelon to the 503 ore block.

The results of the 5th level drilling were, for the most part, negative. However, holes 5-301, 5-305 and 5-310 intersected .053/5', .144/9.8' and .247/11' respectively, below the 503 ore block and to the west of the 601 ore block, in favourable pyritic lithology (see longitudinal section in map pocket #1).

On the other hand, the sixth level drilling, done from the 692 drift, was successful (see map pocket #3). It proved up westward extensions of the 601 and 701 ore blocks (see area between 5+50W and 6+50W, above and below 6th level, on longitudinal section). Holes 6-08 and 6-09 were drilled southwestward to determine ground conditions since the 592 drift could not be driven neither west or east due to bad ground.

The 6th level drilling results were also very encouraging in that they indicated that the downward continuation of the N2 Pyritic Porphyry Zone is very likely.

In the course of 1991, it was decided to re-allocate our limited exploration resources to a combined program of exploratory ramping and drilling instead of continuing with an extensive drill program, as had been planned in the beginning of that year. This decision was based on the favourable 6th level drill results, cited above, and on the pressing need to outline exploitable ore reserves for the later part of 1993 and 1994. Consequently, it was decided that the most time effective way to accomplish this would be by driving a bifurcated decline to both the West and N2 Zones (see longitudinal section in map pocket #1).

The West Zone was not carried in the mine's ore reserves in previous years since only three holes, at wide spacings, had been drilled into it. However, all three drill intersections show very strong geologic correlations:

- i) gold mineralization occurs in the same sericitic (hydrothermal) volcanic unit.
- ii) the gold mineralization is associated with quartz veining and minor pyrite.
- iii) the hole intersections line up in a -40 degree plunge which is consistent with the attitudes of the mine's ore zones.
- iv) this mode of mineralization and lithology is identical to the M1 Zone which has been mined in the upper part of the mine and appears to be the downplunge counterpart of it.

Based on these parameters, a possible tonnage in the order of 100,000 tons at .13 opt. grade is indicated. Hopefully, this will prove to be a minimal estimate.

Therefore, the objective of the 691 decline is to run parallel to the sericitic volcanic unit and test it with drilling to determine where the eastern boundary of the West Zone is. Also, ring drilling will be done to test for the vertical component of the ore zone. Ultimately, the decline will enter the West Zone, at the 7th level horizon, to test the zone directly.

Simultaneously, the 694 decline, the other arm of the bifurcation, will proceed towards the 7th level horizon in the N2 Pyritic Porphyry Zone. The explorative objective here is to test for both the westward and downward continuation of the N2 Zone which has been the mainstay of the mine's productive life. At the 7th level a crosscut will be driven south to provide drill access for drilling down to the 8th and 9th level horizons.

In 1991, the sericitic volcanic unit was tested by the 695 crosscut (map pocket #1) and by holes 7-01, 7-02 and 7-03. Assay results were negligible overall. However, the crosscut sampling returned .188 and .11 opt. in two instances, indicating that unit is a favourable horizon for gold mineralization.

A 21' long pod of pyritic porphyry ore, grading .155 opt., was discovered unexpectedly in the 694 decline. Such occurrences are always encouraging indicating an echelon structures. Holes 7-04 and 7-05 were drilled from the 694 decline and did not intersect the N2 Pyritic Porphyry Zone on 7+00W, above the 7th level horizon. (However, Hole 7-10, drilled in 1992, intersected .285/15' at 6+00W West!).

The 1991 ramping and associated drilling are detailed in Tables 1 and 2 and are depicted on the maps in pocket #4.

### Conclusions and Recommendations

Eventhough the underground exploration program is still in its incipient stages, it has already been successful. Ore boundaries have been extended in both the 601 and 701 ore blocks in the N2 Pyritic Porphyry Zone. Also, the drill results indicate that this zone continues downward. Likewise, preliminary investigation of the sericitic volcanic unit, which hosts the West Zone, have confirmed that this unit is a favourable stratum for gold mineralization.

Therefore, it is recommended that the bifurcated ramping program and associated drilling continue in exploration of the West and N2 Zones.

ST ANDREW GOLDFIELDS LTD.

PROPERTY: STOCK: UNDERGROUND 592 WASTE DRIFT

LOCATION: 8+23 W; 3+04 N BEARING: 208° HOLE NO.: 5-300

LOGGED BY: O.Z. ELEVATION: 9312 DIP: 0°

FINAL DEPTH: 100.0; STARTED: MAR 24/91 FINISHED: MAR. 25/91

CORE SIZE: AQ DRILLED BY MINDECON

<u>FROM</u>	<u>TO</u>	<u>DESCRIPTION</u>
0.0	53.5	GREY CARBONATE: 33% BRECC'D Qtz VLTS.; TR. PY WELL CHL'D MATRIX; VERY GOOD GROUND
53.5	87.0	GREY/GREEN CARBONATE: ESSENTIALLY THE SAME AS ABOVE BUT FUCHSITIC MATRIX INSTEAD OF CHLORITIC
87.0	100.0	TALC CHLORITE SCHIST: MINOR BREAK, SOFT, BLACK, GOOD GROUND, 5-10% Qtz VLTS., TR. PY
	100.0	END OF HOLE: CORE PARTIALLY SPLIT & STORED

**SAMPLE RECORD SHEET 5-300**

<b>SAMPLE#</b>	<b>FROM</b>	<b>TO</b>	<b>LENGTH</b>	<b>AU OZ/TON</b>	<b>DESCRIPTIONS</b>
11595	67	72	5	.090	GREY/GRN. CRB; 33% qtz 1% PY
6	72	77	5	.020	" " " " " " " "
7	77	82	5	.010	" " " " " " " "
8	82	87	5	.002	" " " " " " " "



**ST ANDREW GOLDFIELDS LTD.**

**PROPERTY: STOCK: UNDERGROUND 592 WASTE DRIFT**

**LOCATION: 8+23 W; 3+ 04 N BEARING: 179° HOLE NO.:5-301**

**LOGGED BY: O.Z. ELEVATION: 9308 DIP: -54°**

**FINAL DEPTH: 170.0 STARTED: MAR. 25/92 FINISHED: MAR.27/91**

**CORE SIZE: AQ DRILLED BY MINDECON**

---

<b>FROM TO</b>	<b>DESCRIPTION</b>
0.0 33.5	CHLORITIZED GREY CARBONATE: GREY TO BLACK, 20-33% qtz VLTS., TR. PY., MEDIUM HARD, GOOD GROUND, (CHL'N MAY INDICATE THAT MAJOR BREAK IS NEARBY)
33.5 66.5	GREY/GREEN CARBONATE: 33-40% qtz. VLTS., TR. PY, VERY GOOD GROUND
66.5 68.5	FELDSPAR PORPHYRY: BROWN, 1% DISS'D PY, 33% qtz VLTS., HARD, CONSPICUOUS PHENOCRYSTS
68.5 77.0	PYRITIC CARBONATE: 3-10% CRSE PYRITE, DARK GREY, CHL'D, VERY GOOD GROUND
77.0 156.5	GREEN CARBONATE: EMERALD GREEN, VERY GOOD GROUND, 20-33% qtz VLTS., TR-1% PY
156.5 170.0	GREY/GREEN CARBONATE: AS ABOVE AT 33.5-66.5 BUT MORE SILICIFIED
170.0	END OF HOLE: CORE SPLIT & STORED

SAMPLE RECORD SHEET 5-301

SAMPLE#	FROM	TO	LENGTH	AU OZ/TON	DESCRIPTIONS
11599	61.5	66.5	5	.006	GREY/GRN; 40% qtz; TR-1% PY
11600	66.5	68.5	2	.012	FELDSPAR POR; 1% PY
1	68.5	72	3.5	.062	PY'TIC CARB; 5% qtz; 10% PY
2	72	77	5	.046	" " " " " ";3-5% PY
3	77	82	5	.002	GRN CARB;20% qtz; 3% PY
4	82	87	5	.010	" " " " ;" " " ";1% PY

**ST ANDREW GOLDFIELDS LTD.**

**PROPERTY: STOCK: UNDERGROUND**

**LOCATION: 8+ 00 W; 3+09 N BEARING: 152° HOLE NO.:5-302**

**LOGGED BY: O.Z. ELEVATION: 9497 DIP: 0°**

**FINAL DEPTH: 59.0 STARTED: APRIL 22/91 FINISHED: APRIL 22/91**

**CORE SIZE: AQ DRILLED BY MINDECON**

**FROM TO**

**DESCRIPTION**

**0.0 59.0**

**GREEN CARBONATE: CRSE GRAINED,  
BRECC'D, 20-33% qtz VLTS., 1-2%  
DISS'D PY, GOOD GROUND**

**56.0-59.0: 50% BRN, POR, VLTS, 1-2%  
DISS'D PY**

**59.0**

**END OF HOLE: CORE ASSAYED 100%**

**SAMPLE RECORD SHEET 5-302**

<b>SAMPLE#</b>	<b>FROM</b>	<b>TO</b>	<b>LENGTH</b>	<b>AU OZ/TON</b>	<b>DESCRIPTIONS</b>
12059	0	5	5	.004	GREEN CARB; 20-33% qtz;TR-1% PY
12060	5	10	5	.034	" " " " " " "
1	10	15	5	.020	" " " " " " "
2	15	20	5	.022	" " " " " " "
3	20	25	5	.010	" " " " " " "
4	25	30	5	.016	" " " " " " "
5	30	35	5	.034	" " " " " " "
6	35	40	5	.012	" " " " " " "
7	40	45	5	.006	" " " " " " "
8	45	50	5	.330	" " " " " ";10% POR; 1-2% PY
9	50	53	3	.006	" " " " " ";20% qtz; " " " " "
12070	53	56	3	.006	" " " " " " " " " " "
1	56	59	3	.016	" " " " " ; 50% BRN. POR; " " "

**END**

**ST ANDREW GOLDFIELDS LTD.**

**PROPERTY: STOCK: UNDERGROUND 592 DRIFT**

**LOCATION: 8+00 W; 3+09 N BEARING: 152° HOLE NO.: 5-303**

**LOGGED BY: O. Z. ELEVATION: 9498 DIP: +26°**

**FINAL DEPTH: 81.0 STARTED: APRIL 23/91 FINISHED:**

**CORE SIZE: AQ DRILLED BY MINDECON**

---

**FROM TO**

**DESCRIPTION**

**0.0 72.0**

**GREEN CARBONATE: GOOD GROUND, TR-3%  
PY LOCALLY**

**72.0 81.0**

**CHLORITIZED GREY CARBONATE: DARK  
GREY TO BLACK, SLIGHTLY TALCOSE, 33%  
qtz VLTS., 1% PY**

**81.0**

**END OF HOLE: CORE ASSAYED 100%**



**ST ANDREW GOLDFIELDS LTD.**

**PROPERTY: STOCK: UNDERGROUND**

**LOCATION: 8+00 W; 3+09 N BEARING: 152° HOLE NO.: 5-304**

**LOGGED BY: O.Z. ELEVATION: 9313 DIP: -30°**

**FINAL DEPTH: 140' STARTED: APRIL 23/91 FINISHED: APRIL 25/91**

**CORE SIZE: AQ DRILLED BY MINDECON**

**FROM TO**

**DESCRIPTION**

**0.0 129.0**

**GREEN CARBONATE: GOOD GROUND,  
BRECC'D, TR-1% PY LOCALLY 2% DISS'D  
PY**

**48.5-53.5: FELD. POR; 2% DISS'D PY  
53.5-55.5: PYRITIC GREY POR., 5-10%  
CRSE PY**

**55.5-60.0: GREY POR.; 3-5% FINELY  
DISS'D PY**

**129.0 135.0**

**SHEARED CHLORITE SCHIST: BLACK, 40%  
BRECC'D qtz VLTS, TR-1% PY, STRONGLY  
SHEARED AT MOD. ANGLES, FAIR GROUND**

**135.0 140.0**

**GREY PORPHYRY: DARK GREY, LOCALLY  
GREENISH, VERY HARD, SHATTERED, FAIR  
GROUND**

**140.0**

**END OF HOLE: SAMPLES ASSAYED WHOLE  
REMAINDER OF CORE STORED**

**SAMPLE RECORD SHEET 5-304**

<b>SAMPLE#</b>	<b>FROM</b>	<b>TO</b>	<b>LENGTH</b>	<b>CORE RECO.</b>	<b>AU OZ/TON</b>	<b>DESCRIPTIONS</b>
12088	48.5	53.5	5		.066	FELD POR.; 2% PY
9	53.5	55.5	2		.154	PYRITIC POR; 5-10% PY
12090	55.5	60	4.5		.084	GREY POR.; 3-5% PY
1	60	64	4.0		.006	GRN. CARB; 33% qtz; 1% PY
2	97	102	5		.030	" " " " " " " " " ;1-2% PY
3	117	120	3		.006	" " " " " " ;20% " " ;TR PY
4	120	125	5		.004	" " " " " " ;30% " " ;TR-1% PY
5	125	129	4		.002	" " " " " " ;50% " " ;TR-1% PY
6	129	135	6	80%	.008	CHL. SCH. 40% qtz; " " " "
7	135	140	5	80%	.012	GREY POR TR-1% PY



ST ANDREW GOLDFIELDS LTD.

PROPERTY: STOCK: UNDERGROUND

LOCATION: 8+00W; 3+11N BEARING: 152° HOLE NO.: 5-305

LOGGED BY: O.Z. ELEVATION: 9309 DIP:-50°

FINAL DEPTH: 247.0 STARTED: APRIL 26/91 FINISHED: MAY 7/91

CORE SIZE: AQ DRILLED BY MINDECON

---

<u>FROM TO</u>	<u>DESCRIPTION</u>
0.0 10.0	TALC CHLORITE SCHIST: GOOD GROUND, 20% qtz VLTS. TR-1% PY
10.0 127.0	GREEN CARBONATE: GOOD GROUND, CRSE, GR., 20% qtz VLTS, TR-1% 50.3-53.5: 50% GREY POR; 1-2% PY 53.5-57.0: SERICITIZED GREEN CARB; 15% qtz ;2% PY 64.4-72.0: FELD POR; 2% PY 66.0-68.0: PY'TIC GREY POR; 10% CRSE PY 72.0-75.8: 50% GREY POR; 5-7% CRSE PY
127.0 215.0	GREY/GRN CARBONATE: GOOD GROUND, TR- 1% PY LOCALLY, 10-15% qtz VLTS
215.0 242.0	CHLORITIZED GREY CARBONATE: DARK GREY, 20-50% qtz VLTS, BRECC'D, SHR'D, TR. PY, SHATTERED CORE, POOR GROUND  218.5-221.5: FELD. POR.; 1% FINELY DISS'D PY  221.5-242.0: 33% CORE RECOVERY
242.0 247.0	LOST CORE: (MINOR BREAK)
247.0	END OF HOLE

SAMPLE RECORD SHEET 5-305

SAMPLE#	FROM	TO	LENGTH	CORE RECO.	AU OZ/TON	DESCRIPTIONS
12098	47.0	50.3	3.3		.004	GRN. CARB; 20% qtz; TR-1% PY
9	50.3	53.5	3.2		.032	" " " " " ;50% GREY POR; 1-2% PY
12100	53.5	57.0	3.5		.046	SER'D GRN. CARB; 15% qtz; 2% PY
1	57.0	62.0	5.0		.012	GRN CARB; 25% qtz; TR-1% PY
2	62.0	64.4	2.4		.016	" " " " " " " " " " " " "
3	64.4	66.0	1.6		.004	FELD POR; 2% PY
4	66.0	68.0	2.0		.198	PY'TIC GREY POR; 10% PY
5	68.0	72.0	4.0		.018	FELD POR; 2% PY
6	72.0	75.8	3.8		.248	GRN CARB; 50% GREY POR; 5-7% PY
7	75.8	80.8	5.0		.048	" " " " " ;20% qtz; TR-1% PY
8	215.0	218.5	3.5		.006	CHL'D GREY CARB; 20% qtz; TR. PY
9	218.5	221.5	3.0		.020	FELD POR; 1% PY
12110	221.5	232.0	8.5		50% .018	CHL'D GREY CARB; 50% qtz TR. PY

**ST ANDREW GOLDFIELDS LTD.**

**PROPERTY: STOCK: UNDERGROUND**

**LOCATION: 8+00W; 3+17N      BEARING: 332°      HOLE NO.: 5-306**

**LOGGED BY: O.Z.      ELEVATION: 9313      DIP: 0°      FINAL DEPTH: 101'**

**STARTED: APRIL 18/91      FINISHED: APRIL 19/91**

**CORE SIZE: AQ DRILLED BY MINDECON**

---

<b>FROM TO</b>	<b>DESCRIPTION</b>
<b>0.0 24.0</b>	<b>TALC CHLORITE SCHIST: FAULT SPLAY SAME AS IN 5-307; GOOD GROUND</b>
<b>24.0 40.0</b>	<b>GREY CARBONATE: BRECC'D &amp; CHL'D; 20- 30% qtz VLTS., TR. PY, SHEARED</b>
<b>40.0 101.0</b>	<b>GREEN CARBONATE: BRIGHT EMERALD GREEN, RE-CRYSTALLIZED TO A CRSE GRAIN TEXTURE, VERY GOOD GROUND</b>
<b>101.0</b>	<b>END OF HOLE: SAMPLES ASSAYED 100%: REST OF CORE WAS STORED</b>

SAMPLE RECORD SHEET 5-306

SAMPLE#	FROM	TO	LENGTH	AU OZ/TON	DESCRIPTIONS
12030	47	49.5	2.5	.022	GREEN CARBONATE: TR-1% PY
1	49.5	52.0	2.5	.044	" " " " " " " " :5% PY
2	52	57	2.5	.004	" " " " " " " " ":TR-1% PY
3	57	62	5	.034	" " " " " " " " ":2% "
4	62	67	5	.016	" " " " " " " " : " " "
5	67	72	5	.030	" " " " " " " " ":1% " "
6	72	77	5	.020	" " " " " " " " :2% " "
7	77	82	5	.054	" " " " " " " " " " " "
8	82	87	5	.014	" " " " " " " " " " " "
9	87	92	5	.008	" " " " " " " " " " " "
12040	92	97	5	.008	" " " " " " " " " ":TR-1% PY
1	97	101	4	.004	" " " " " " " " " " " "

END

**ST ANDREW GOLDFIELDS LTD.**

**LOCATION: 8+00W; 3+17N      PROPERTY: STOCK: UNDERGROUND 592 DRIFT**

**BEARING: 332°**

**HOLE NO.: 5-307**

**LOGGED BY: O.Z.      ELEVATION: 9308      DIP: -70°**

**FINAL DEPTH: 150.0'      STARTED: APRIL 19/91      FINISHED: APRIL 22/91**

**CORE SIZE:      AQ DRILLED BY MINDECON**

---

<b>FROM TO</b>	<b>DESCRIPTION</b>
<b>0.0 8 9.5</b>	<b>TALC CHLORITE SCHIST: FAULT SPLAY? GOOD GROUND, BLUISH-BLACK, SOFT, BRECC'D, PINK-PORPHYRY-LIKE FRAGMENTS THROUGHOUT, WHICH HAVE BECOME ROUNDED</b>
<b>89.5 150.0'</b>	<b>GREY/GREEN CARBONATE: SHR'D &amp; BRECC'D, 20% qtz VLTS, TR. PY, GOOD GROUND</b>
	<b>124.0-150.0: PREDOMINANTLY GRN. CARB</b>
<b>150.0'</b>	<b>END OF HOLE: CORE PARTIALLY SAMPLED &amp; STORED</b>

**SAMPLE RECORD SHEET 5-307**

<b>SAMPLE#</b>	<b>FROM</b>	<b>TO</b>	<b>LENGTH</b>	<b>AU OZ/TON DESCRIPTIONS</b>
12053	122	125	3	.010 GRN.CARB; 30% qtz ;1% PY
4	125	130	5	.022 " " " ;20% " ;1-2% PY
5	130	135	5	.006 " " " " ;60% " ;" " " "
6	135	140	5	.022 " " " " ;30% " " " ;" " " "
7	140	145	5	.006 " " " " ;15% " " " ;TR-1% PY
8	145	150	5	.002 " " " " " " " " " " " " " "

**END**

ST ANDREW GOLDFIELDS LTD.

PROPERTY: STOCK: UNDERGROUND 592-DRIFTWOOD

LOCATION: 7+50W ; 3+11 N BEARING: 152° HOLE NO.: 5-308

LOGGED BY: O.Z. ELEVATION: 9313' DIP: 0°

FINAL DEPTH: 720' STARTED: MAY 8/91 FINISHED: MAY 9/91

CORE SIZE: AQ DRILLED BY MINDECON

---

FROM TO	DESCRIPTION
0.0 70.0	GREY/GREEN CARBONATE: CRSE GR. (RECRYSTALLIZED), GOOD GROUND, TR. PY, 15-20% qtz VLTS  BECOMING MORE CHL'D TOWARDS END  56.5-58.0': SERICITIZED PY'TIC POR 5-7% PY  58.0-70: CHL'D GREY CARB.; TR-3% DISS'D PY
70.0 71.0	FELDSPAR PORPHYRY: TR-1% DISS'D PY
71.0 72.0	SERICITIZED PYRITIC PORPHYRY: 50% CORE RECOVERY, BREAKTHROUGH INTO DRIFT
72.0	END OF HOLE: SAMPLES ASSAYED WHOLE

SAMPLE RECORD SHEET 5-308

SAMPLE#	FROM	TO	LENGTH	AU OZ/TON	CORE RECO.	DESCRIPTIONS
12111	51.5	56.5	5	.010		GRN.CARB; 20% qtz, TR-1% PY
2	56.5	58	1.5	.012		SER'D PY'TIC POR; 5- 7% PY
3	58	61	3	.006		GRN.CARB; 20% qtz;TR-1% PY
4	61	65	4	.056		GRY CARB; TR-1% DISS'D PY
5	65	70	5	.042		" " "; 3% DISS'D PY
6	70	71	1	.008		FELD. POR; TR-1% PY
7	71	72	1	.324	50%	SER'D PY'TICPOR;3% PY
END						



**ST ANDREW GOLDFIELDS LTD.**

**PROPERTY: STOCK: UNDERGROUND HOLE NO.: 5-309**  
**LOCATION: 7+50 W; 3+11 N BEARING: 152° LOGGED BY: O.Z.**  
**ELEVATION: 9314' DIP: +23° FINAL DEPTH: 121.0'**  
**STARTED: MAY 9/91 FINISHED: MAY 10/91**  
**CORE SIZE: AQ DRILLED BY MINDECON**

---

<b>FROM TO</b>	<b>DESCRIPTION</b>
0.0 15.0	CHLORITE SCHIST: GOOD GROUND, BLACK, TR. PY.
15.0 46.0	GREY/GREEN CARBONATE: GOOD GROUND, 20% qtz VLTS, TR-1% PY
46.0 51.0	SERICITIZED PYRITIC PORPHYRY: YELLOWISH GREY, GOOD GROUND, 5-7% DISS'D PY
51.0 95.0	GREEN CARBONATE: GOOD GROUND, 20% qtz VLTS, TR-1% DISS'D PY
	76.0-81.5: FELDSPAR POR.; 1-2% DISS'D PY
	81.5-84.0: PYRITIC GREY POR: 5-7% PY
	84.0-89.0: RED POR.; 2% DISS'D PY
95.0 106.0	CHLORITIZED GREY CARBONATE: 20-33% qtz VLTS., TR. PY. WELL SHR'D
106.0 121.0	TALC CHLORITE SCHIST: MINOR BREAK 33% CORE RECOVERY, FAULT GOUGE
121.0	END OF HOLE: SAMPLES ASSAYED WHOLE, CORE STORED

**SAMPLE RECORD SHEET 5-309**

<b>SAMPLE#</b>	<b>FROM</b>	<b>TO</b>	<b>LENGTH</b>	<b>AU OZ/TON</b>	<b>CORE DESCRIPTIONS RECO.</b>
12118	37.5	41	3.5	.012	GRN. CARB; 1% PY
9	41	46	5	.010	GRY/GRN CARB; TR. PY
12120	46	51	5	.080	SER'D GREY POR; 5-7% PY
1	51	56	5	.006	GRN CARB; TR. PY
2	76	81.5	5.5	.162	FELD. POR; 2% DIS'D PY
3	81.5	84	2.5	.418	PY'TIC GREY POR; 5- 7% PY
4	84	89	5.0	.208	RED. POR.; 3-5% PY
5	89	94	5.0	.010	GRN CARB; 1-2% PY
6	94	99	5.0	.006	CHL'D GREY CARB; 33% qtz; 1% PY
7	99	103	4.0	.052	" " " " " " " " " "
8	103	106	3.0	.006	" " " " " " " " " "
9	106	121.0	15.0	.010	33% TALC CHL. SCH

**ST ANDREW GOLDFIELDS LTD.**

**PROPERTY: STOCK: UNDERGROUND HOLE NO.: 5-310**

**LOCATION: 7+50 W; 3+11 N BEARING: 152° LOGGED BY: O.Z.**

**ELEVATION: 9313' DIP: -38 FINAL DEPTH: 237.0'**

**STARTED: MAY 13/91 FINISHED: MAY 16/91**

**CORE SIZE: AQ DRILLED BY MINDECON**

---

<b>FROM</b>	<b>TO</b>	<b>DESCRIPTION</b>
0.0	16.5	CHLORITE SCHIST: FAIR GROUND
16.5	223.0	GREY/GREEN CARBONATE: GOOD GROUND, TR.PY.10-20% qtz VLTS.,  62.4-72.7: FELD. POR.; GOOD GROUND, 2% PY  64.2-67.2: GREY/GRN CARB; 3% PY  114.0-145.0: GREEN CARBONATE: EMERALD GREEN GOOD GROUND, TR-1% PY  117.0-127.0: 2-3% DISS'D PY  192.0-203.0: PYRITIC GREY POR; 2-5% DISS'D PY, GOOD GROUND
223.0	237.0	TALC CHLORITE SCHIST: MINOR BREAK BAD GROUND,  225.0-237.0: LOST CORE
237.0		END OF HOLE: SAMPLES ASSAYED WHOLE, CORE STORED

**SAMPLE RECORD SHEET 5-310**

<b>SAMPLE#</b>	<b>FROM</b>	<b>TO</b>	<b>LENGTH</b>	<b>AU OZ/TON DESCRIPTIONS</b>
12130	60	62.4	2.4	.010 GREY/GRN. CARB; TR.PY
1	62.4	64.2	1.8	.008 FELD. POR; 2% PY
2	64.2	67.2	3	.070 GREY/GRN CARB; 3% PY
3	67.2	72.7	5	.056 FELD POR; 2% PY
4	72.7	77.7	5.5	.010 GREY/GRN; TR. PY
5	117	122	5	.026 GRN. CARB; 2-3% PY
6	122	127	5	.028 " " " " " " " " " "
7	187	192	5	.006 GREY/GRN CARB; TR. PY
8	192	197	5	.280 PYTIC GREY POR; 5% PY
9	197	200	3	.410 " " " " " " " " " "
12140	200	203	3	.008 " " " " " " " " ;2" " "
1	203	205	2	.010 GREY/GRN CARB; 1% PY

ST ANDREW GOLDFIELDS LTD.

PROPERTY: STOCK: UNDERGROUND HOLE NO.: 5-311  
592 WASTE DRIFT

BEARING: 152° LOGGED BY: O.Z. ELEVATION: 9308

STARTED: MAY 16/91 FINISHED: MAY 24/91

CORE SIZE: AQ DRILLED BY MINDECON

---

FROM	TO	DESCRIPTION
0.0	12.0	CHLORITE SCHIST: BLACK, SOFT, GOOD GROUND
12.0	31.0	GREY/GREEN CARBONATE: GOOD GROUND, 20% qtz;TR PY.
31.0	210.0	GREEN CARBONATE: GOOD GROUND, 15-20% qtz VLTS., TR PY,  36.0-52.0: INTERMITTENT VUGGY INTERVALS WITH CALCITE XLS LINING CAVITIES  84.0-89.0: FELD. POR ; 2% DISS'D PY,  89.0-100.7: PYRITIC GREY POR; 2-15% CRS PY LOCALLY  100.7-103.0: CHL'D GREY CARBONATE; TR-1% PY
210.0	244.0	CHLORITIZED GREY CARBONATE: BECOMING MORE CHL'D WITH DEPTH. 33% RECC'D qtz VLTS, AT LOW ANGLES FAIR GROUND, TR. PY
244.0	280.0	CHLORITE SCHIST: FAULT ZONE POOR GROUND, SHATTERED CORE, MINOR GOUGY FAULTS & JOINTS AT LOW ANGLES TO CORE, 33% qtz VLTS, TR. PY, 66 TO 75% CORE RECOVERY.
	280.0	END OF HOLE: SAMPLES ASSAYED WHOLE; COR STORED

SAMPLE RECORD SHEET 5-311

SAMPLE#	FROM	TO	LENGTH	AU OZ/TON	DESCRIPTIONS
12142	79	84	5	.004	GRN; 15% qtz; TR-1% PY
3	84	89	5	.008	FELD. POR; 2% PY
4	89	92	3	.434	PYRITIC GREY POR; 10-15% PY
5	92	97	5	.078	" " " " " " " " ;2-3% PY
6	97	100.7	3.7	.200	" " " " " " " " ;5% PY
7	100.7	103	2.3	.016	CHL'D GREY CARB; 1-2% PY
8	103	108	5	.002	GRN CARB; 33% qtz; TR-1% PY

**ST ANDREW GOLDFIELDS LTD.**

**PROPERTY: STOCK MINESITE: UNDERGROUND**

**LOCATION: 2+60 N 6+50 W BEARING: 332° HOLE NO.: 5-312**

**LOGGED BY: R.J.A. ELEVATION: 9310' DIP: -53°**

**FINAL DEPTH: 180' STARTED: APRIL 4/91 FINISHED: APRIL 5/91**

**CORE SIZE: AQ DRILLED BY MINDECON**

---

<b>FROM</b>	<b>TO</b>	<b>DESCRIPTION</b>
0	61	GREEN CARBONATES: BRIGHT GREEN CARBONATES W OCCASIONAL GREY CARBONATE BAND 33% qtz, TR-2% PY LOCALLY VERY GOOD GROUND
61	173	GREY GREEN CARBONATE: 33% qtzTR-3% PY DISS. LOCALLY PY TO 5% DISS.  138.5-141.5: WHITE FELD. POR. VEIN VERY GOOD GROUND
173	180	CHLORITE SCHIST: 20-30% qtz TR. PY, NO FAULT GAUGE BUT ROCK IS VERY SOFT, GETTING BLOCKY IN LAST TWO FEET FAIR FROUND
	180	END OF HOLE

**SAMPLE RECORD SHEET 5-312**

<b>SAMPLE #</b>	<b>FROM</b>	<b>TO</b>	<b>LENGTH</b>	<b>AU OZ/TON</b>	<b>DESCRIPTIONS</b>
<b>12001</b>	<b>126</b>	<b>129</b>	<b>3</b>	<b>.008</b>	<b>GRY/GRN CARB: 33%</b> <b>qtz;2-3% PY</b>
<b>02</b>	<b>129</b>	<b>132</b>	<b>3</b>	<b>.020</b>	<b>" " " : " "3-5% PY</b>
<b>03</b>	<b>132</b>	<b>137</b>	<b>5</b>	<b>.032</b>	<b>" " " : " "1-2% PY</b>



**ST ANDREW GOLDFIELDS LTD.**

**PROPERTY: STOCK MINESITE: UNDERGROUND  
5-92 EXP. DRIFT**

**LOCATION: 2+34 N 6+50 W BEARING 152° HOLE NO.: 5-313**

**LOGGED BY: R.J.A. ELEVATION: 9311 DIP: -23°**

**STARTED: APRIL 4/91 FINISHED: APRIL 3/91**

**CORE SIZE: AQ DRILLED BY MINDECON**

---

<b>FROM</b>	<b>TO</b>	<b>DESCRIPTION</b>
<b>0</b>	<b>37</b>	<b>GREY/GREEN CARBONATE: 20-33% qtz TR-2% PY LOCALIZED NARROW BANDS 1" TO 3" WIDE WHERE PY IS AS HIGH AS 5% GOOD GROUND</b>
<b>37</b>	<b>97</b>	<b>GREY CARBONATE: 20-33% qtz TR-2% PY LOCALLY, MED TO CRSE GRAINED 56-57: PINK POR; HARD, VUGGY, MASSIVE</b>
<b>97</b>	<b>105</b>	<b>FULT ZONE (CHLORITE SCHIST?) CORE VERY BLOCKY, MUCH OF CORE HAS BEEN GROUND OR WASHED AWAY, 6" OF CLAY LIKE FAULT GOUGE BETWEEN 97' AND 102', ONLY 50% OF CORE RECOVERED. BAD GROUND</b>
<b>105</b>	<b>110</b>	<b>FELDSPAR PORPHYRY: BRECCIATED, VERY HARD, GREY TO PURPLISH HUE, 50-60% qtz, SOME CHLORITE AND CARBONATE IN FRACTURES, TR-1% PY, GOOD GROUND</b>
	<b>110</b>	<b>END OF HOLE, CORE STORED, NO SAMPLING</b>

**ST ANDREW GOLDFIELDS LTD.**

**PROPERTY: STOCK MINESITE: UNDERGROUND HOLE NO.: 5-314  
5-92 EXP. DRIFT**

**LOCATION: 2+34N 6+50 W LOGGED BY: R.J.A. ELEVATION: 9310'**

**DIP: -45 FINAL DEPTH: 203' STARTED: MAR 27/91**

**FINISHED: APRIL 4/91**

**CORE SIZE: AQ DRILLED BY MINDECOM**

---

<b>FROM</b>	<b>TO</b>	<b>DESCRIPTION</b>
<b>0</b>	<b>104</b>	<b>GREEN CARBONATE: 33% qtz, TR-2% PY. LOC. GOOD GROUND</b>
<b>104</b>	<b>203</b>	<b>GREY CHLORITIZED CARBONATE: MED-CRSE GRAINED, BECOMING MORE CHORITIZED AT DEPTH., 30-40% qtz, TR-1% PY</b>
		<b>159-182: 50% C.R.; VERY GRAVELLY AND LOTS OF GRINDING, POSSIBLY A FAULT ZONE</b>
		<b>188-203: SAME AS 159-182 ABOVE</b>
<b>203</b>		<b>END OF HOLE: NO SAMPLING REQUIRED</b>

ST ANDREW GOLDFIELDS LTD.

PROPERTY: STOCK MINESITE: UNDERGROUND HOLE NO.:5-315

LOGGED BY: R.J.A. ELEVATION: 9314 DIP: +50°

FINAL DEPTH: 76' STARTED: APRIL 3/91 FINISHED: APRIL 4/91

CORE SIZE: AQ DRILLED BY MINDECON

---

<u>FROM</u>	<u>TO</u>	<u>DESCRIPTION</u>
0	56	GREY GREEN CARB: 33-50% qtz, TR-1% PY <del>LOSE</del> GOOD GROUND loc.
56	58	BROWN PORPHYRY: MOTTLED GREY & BROWN PORPH., 70% qtz TR. PY GOOD GROUND
58	65	CHLORITIZED CARBONATE: DARK GREEN, 33-40% qtz TR-1% PY FAIR TO GOOD GROUND
65	76	FAULT ZONE (CHLORITE SCHIST) VERY BLOCKY, qtz CR. VERY CHLORITIZED BUT HELD TOGETHER WITH qtz. POOR GROUND
	76	END OF HOLE: NOTHING SAMPLED, CORE STORED

**ST ANDREW GOLDFIELDS LTD.**

**PROPERTY: STOCK: UNDERGROUND 592 DRIFT HOLE NO.: 5-316**

**LOCATION: 2+34 N; 7+00 W BEARING: 332° LOGGED BY: O.Z.**

**ELEVATION: 9309 DIP: -60° FINAL DEPTH: 201.0'**

**STARTED: APRIL 16/91 FINISHED: APRIL 17/91**

**CORE SIZE: AQ DRILLED BY MINDECON**

---

<b>FROM</b>	<b>TO</b>	<b>DESCRIPTION</b>
<b>0.0</b>	<b>4.5</b>	<b>FELDS PAR PORPHYRY: SALMON PINK, 1%, FAIR GROUND</b>
<b>4.5</b>	<b>13.0</b>	<b>SERICITIC PORPHYRY COMPLEX: STRAW YELLOW; 5-10% DISS'D 20% qtz VLTS, LOCAL BROWN POR., BRECC'D GOOD GROUND</b>
<b>13.0</b>	<b>201.0</b>	<b>GREY/GREEN CARBONATE; GOOD GROUND, BRECC'D, 20-33% MILKY qtz VLTS., GENERALLY TR. PY, LOCALLY 1-2% PY, FINELY DISS'D.</b>
	<b>201.0</b>	<b>END OF HOLE: CORE SPLIT &amp; STORED</b>

ST ANDREW GOLDFIELDS LTD.

SAMLE RECORD SHEET 5-316

SAMPLE#	FROM	TO	LENGTH	AU	CORE DESCRIPTION RECO.
12023	0	4.5	4.5	.032	66% FELD.POR.; 1% PY
4	4.5	9.5	5	.404	<sup>SEK.</sup> <del>SEV.</del> POR.COMPLEX; 5-10% PY
5	9.5	13.0	3.5	.092	80% " " " " " " " " ;" " " " "
6	13.0	14.7	1.7	.036	qtz/GRY CARB BRECCIA; 2-3% PY
7	14.7	19.7	5.0	.258	GREY/GRN. CARB;25% qtz ;TR.PY
8	86.0	91.0	5.0	.258	" " " " " " " ;40% ";2% PY
9	156.0	161.0	5.0	.016	" " " " " " " ;20%: ;" " "
12042	19.7	24.7	5	.004	RESAMPLES GRY/GRN CARB:20-33% qtz;1-2%PY
3	61	66	5	.028	" " " " " " " ;" " " " " " "
4	66	71	5	.016	" " " " " " " ;" " " " " " "
5	71	76	5	.036	" " " " " " " ;" " " " " " "
6	76	81	5	.362	" " " " " " " ;" " " " " " "
7	81	86	5	.018	" " " " " " " ;" " " " " " "
8	91	96	5	.006	" " " " " " " ;" " " " " " "
9	96	101	5	.010	" " " " " " " ;" " " " " " "
12050	101	106	5	.616	" " " " " " " ;" " " " " " "
1	106	111	5	.012	" " " " " " " ;" " " " " " "
2	111	116	5	.004	" " " " " " " ;" " " " " " "

ST ANDREW GOLDFIELDS LTD.

PROPERTY: ST ANDREW: STOCK: UNDERGROUND HOLE NO.:5-317

LOCATION: 2+23 N; 7+00 W BEARING: 152° LOGGED BY: R.J.A. & O.Z.

ELEVATION: 9309 DIP:-50° FINAL DEPTH: 230'

STARTED: APRIL 7/91 FINISHED: APRIL 11/91

CORE SIZE: AQ DRILLED BY MINDECON

FROM	TO	DESCRIPTION
0.0	120.0	GREY GREEN CARBONATE:33-50% qtz VEINING, TR-8% PY, OCCASIONAL NARROW BAND VT GRN CARB WITH UP TO 10% CRSE PY.  10-11: MILKY WHITE qtz VEIN; BARREN & VUGGY 24-29: " " " " " " ;" "
120.0	179.0	GREY PORPHYRY BRECCIA: LIGHT GREY, VERY BRECC'D, CHL'D MATRIX INTERSTITIAL TO POR. FRAGMENTS, HARD, LOCALLY PINKISH, TR. PY., FAIR GROUND,  121.0-131.0: SHR'D & CHL'D GREY CARB AT 40° TO CA; 20-33% qtz VLTS., TR. PY.  131.0-131.5: GOUGE SEAM; MINOR FAULT AT 45° TO CA.
179.0	230.0	CHLORITIZED GREY CARBONATE: 20% qtz OVERALL, FAIR GROUND CONDITIONS, 80% CORE RECOVERY, TR. PY., LOCAL TALC CHLORITE SCHIST.  205 213.0-225.5: BRECC'D BROWN PORPHYRY SIMILAR TO INTRUSIVES ENCOUNTERED BELOW THE SIXTH LEVEL, SOUTH OF THE MINOR BREAK ?) 33% qtz; TR.PY GOOD GROUND  225.5-230.0: VERY CHLORITIZED & TALCOSE
230.0		END OF HOLE: CORE SPLIT & STORED

**SAMPLE RECORD SHEET 5-317**

<b>SAMPLE#</b>	<b>FROM</b>	<b>TO</b>	<b>LENGTH</b>	<b>AU OZ/TON</b>	<b>CORE REC.</b>	<b>DESCRIPTION</b>
12004	0 4	4	.024			GRY/GRN CARB:50% qtz VNS: TR-1% PY
12005	4	8 4	.024			" " " " ' :33% qtz ;3-5% PY
12006	8	13	5	.062		" " " " " " :40% qtz ;tr-1% py
12007	13	18.5	5.5	.004		GRY/GRN CARB: 33% qtz;TR-1% PY
12008	18.5	24	5.5	.002		" " " " ' ' : ' " " ;3-5% PY
12009	33	37 4	.012			" " " " " " : " " " ;1-3% PY
12010	37	41	4	.004		" " " " " " : " " " ;2-4% PY
12011	41	46	5	.082		" " " " " " : " " " " " " " "
12012	46	51	5	.006		" " " " " " : " " " " ;5-8% PY
12013	51	56	5	.238		" " " " " " :33-50% qtz 5-6% PY
12014	56	61.5	5.5	.012		" " " " " " :33% qtz;2-3% PY
12015	61.5	66	4.5	.004		" " " " " " : " " " ;" " " "
12016	66	71	5	.010		" " " " " " ;" " " " " " " "
12017	71	76	5	.104		" " " " " " ;" " " ;TR. PY
12018	138.2	143.2	5	.024	90%	GREY POR. BRECCIA: TR-1% PY
9	143.2	148.2	5	.004	"	" " " " " " " " " " :TR-1% PY
12020	148.2	153.2	5	.012	"	" " " " " " : " " :5%PY
1	153.2	158	4.8	.012	"	" " " " " " : 3% PY
2	158.0	166	8.0	.006	"	" " " " " " : tr-1% py

ST ANDREW GOLDFIELDS LTD.

PROPERTY: STOCK: UNDERGROUND 592 DRIFT HOLE NO.: 5-318

LOCATION: 2+23 N; 7+00W ELEVATION: 9312 BEARING: 152°

DIP: -37° FINAL DEPTH: 160.0' LOGGED BY: OZ

STARTED: APRIL 11/91

FINISHED: APRIL 15/91

CORE SIZE: AQ DRILLED BY MINDECOM

---

<u>FROM</u>	<u>TO</u>	<u>DESCRIPTION</u>
0.0	149.0	GREY/GREEN CARBONATE: 20-33% qtz VLTS. TR.PY, FAIR TO GROUND, INTERMITTENT JOINTING AT LOW ANGLES TO CA;
		90.0-129.0: POOR GROUND, CORE IS SHATTERED, CORE RECOVERY IS ONLY 50% LOCALLY, NUMEROUS JOINTS AT LOW ANGLES TO CA,
149.0	160.0	TALC CHLORITE SCHIST: VERY POOR GROUND, 33% FAULT GOUGE
	160.0	END OF HOLE: NO SAMPLES TAKEN, CORE STORED



**ST ANDREW GOLDFIELDS LTD.**

**PROPERTY STOCK: UNDERGROUND HOLE NO.: 5-321**

**LOCATION: 7+00W ; 2+ 88N BEARING: 152° LOGGED BY: OZ**

**ELEVATION: 9310 DIP: -40<sub>10</sub> FINAL DEPTH: 112.0'**

**STARTED: MAY 31/91 FINISHED: JUNE 3/91**

**CORE SIZE: AQ DRILLED BY MINDECON**

---

<b>FROM</b>	<b>TO</b>	<b>DESCRIPTION</b>
<b>0.0</b>	<b>112.0</b>	<b>GREY/GREEN CARBONATE: GOOD GROUND; BRECC'D, 33% qtz VLTS, TR.PYF</b>
		<b>6.0-14.0: CHLORITIZED</b>
	<b>112.0</b>	<b>END OF HOLE: NO SAMPLING</b>

ST ANDREW GOLDFIELDS LTD.

PROPERTY STOCK: UNDERGROUND 592 WASTE DRIFT HOLE NO.: 5-322

LOCATION: 7+50W; 3+11 N BEARING: 152° LOGGED BY: OZ

ELEVATION: 9314' DIP +40° FINAL DEPTH: 110.0'

STARTED: MAY 27/91 FINISHED: MAY 28/91

CORE SIZE: AQ DRILLED BY MINDECON

---

<u>FROM</u>	<u>TO</u>	<u>DESCRIPTION</u>
0.0	34.0	CHLORITE SCHIST: FAIR GROUND, 33% qtz VLTS., TR-2% DISS'D PY.
34.0	104.0	GREEN CARBONATE: 15-20% qtz VLTS., TR-1% PY, GOOD GROUND  87.6-90.0: SER'D & SIL'D (GREY POR ?) INTERVAL WITH 5% DISS'D PY
104.0	110.0	TALC CHLORITE SCHIST: FAIR GROUND, 104.5-106.0: BRECC'D BRN. POR.; TR.PY
	110.0	END OF HOLE: SAMPLES ASSAYED WHOLE; CORE STORED

**SAMPLE RECORD SHEET**  
**HOLE NO. : 5-322**

<b>SAMPLE#</b>	<b>FROM</b>	<b>TO</b>	<b>LENGTH</b>	<b>AU OZ/TON</b>	<b>DESCRIPTION</b>
12,149	87.6	90.0	2.4	.014	GRN. CARB; SIL'D & SER'D; 5% PY
12,150	104.5	106	1.5	.012	BRECC'D HEN. POR; TR. PY

**ST ANDREW GOLDFIELDS LTD.**

**PROPERTY STOCK: UNDERGROUND**

**LOCATION 7+00W; 2+88N**

**HOLE NO.: 5-323**

**BEARING 152° ELEVATION 9312**

**DIP +35° FINAL DEPTH 101.0**

**STARTED MAY 29/91 FINISHED MAY 30/91**

**CORE SIZE AQ DRILLED BY MINDECON**

---

**FROM TO**

**0.0 79.0 GREY/GREEN CARBONATE:  
GOOD GROUND, BRECC'D, 20%  
qtz VLTS; TR.PY.**

**58.3-69.3:INTERMITTENT  
MINOR GREY POR. VLTS;WITH  
1-5% DISS'D PY**

**69.3-73.8:GREY POR; 5%  
FINELY DISS'D PY.**

**73.8-79.0:SHR'D & BRECC'D  
WITH 33% qtz VLTS; TR-1%  
DISS'D PY.**

**79.0 101.0 CHLORITIZED & SHEARED  
GREY CARBONATE: GOOD  
GROUND, STRONG SHEARING  
AT 45° TO CA, TR.PY, 20%  
qtz VLTS.**

**101.0 END OF HOLE: SAMPLES  
ASSAYED WHOLE.**

**SAMPLE RECORD SHEET**

5-323

<b>SAMPLE#</b>	<b>FROM</b>	<b>TO</b>	<b>LENGTH</b>	<b>AU OZ./TON</b>	<b>DESCRIPTION</b>
12,151	53.3	58.3	5.0	.018	GREY/GRN; TR.PY
2	58.3	60.3	2.0	.016	" ";50% GREY POR;2%PY
3	60.3	65.3	5.0	.040	" " ; TR-1% PY
4	65.3	69.3	4.0	.020	" ";10% GREY POR;1% PY
5	69.3	73.8	4.5	.084	GREY POR; 5% DISS'D PY
6	73.8	78.8	5.0	.010	SHR'D GREY/GRN;TR-1%PY

**ST ANDREW GOLDFIELDS LTD.**

**PROPERTY** STOCK MINE SITE: U/G            692 CROSS-CUT  
**LOCATION** 0+07N; 5+00W            **BEARING** 332°            **HOLE NO.** 6-01  
**LOGGED BY** O.Z            **ELEVATION** 9163 **DIP** -35°            **FINAL DEPTH** 253'  
**STARTED** JAN 29/91  
**FINISHED** JAN 31/91            **CORE SIZE** AQ: DRILLED BY MINDECON INC.

<b>FROM</b>	<b>TO</b>	<b>DESCRIPTION</b>
0.0	30.0	GREY/GREEN CARBONATE: BRECC'D, 33 TO 66% qtz VEINNING LOCALLY, FAIR GROUND, CORE RECOVERY IS 80% TR. PY.  15.0-19.0: 50% qtz/BROWN POR.; 2% DISS'D PY
30.0	42.0	BROWN PORPHYRY: 33% qtz; 2% FINELY DISS'D PY, LOCALLY LAMINATED DUE TO TECTONISM & ALSO SERICITIZED, GROUND IS FAIR TO POOR, CORE RECOVERY 66% OVERALL
42.0	77.0	MINOR BREAKS: FAULT ZONE VERY POOR GROUND, SHATTERED CORE, 50% CORE RECOVERY; TR PY. 42.0- 60.0: BRECC'D qtz INTERVALS WITH CHLORITE SCHIST  60.0-77.0; SHEARED TALC- CHLORITE SCHIST WITH GOUGE SEAMS
77.0	98.0	CHLORITIZED GREY CARBONATE: GOOD GROUND 10-15% qtz; TR. PY
98.0	253.0	GREY/GREEN CARBONATE: VERY GOOD GROUND, 20-33% qtz, TR. PY  102.0-107.0: PYRITIC GREY POR.; 15-20% PYRITE

107.0-113.5: PYRITIC  
CARBONATE WITH FEW NARROW  
POR. BANDS, 3-7% DISS'D  
PY

113.5-115.0: SERICITIZED  
PYRITIC POR.;10% CRSE  
PYRITE

152.0-174.0: FEW  
INTERMITTENT HEMATITIC  
ALTERATION BANDS WITH RED  
HEMATITE IN FRACTURE-  
FILLING

253

END OF HOLE: CORE SPLIT &  
STORED

ST ANDREW GOLDFIELDS LTD.

SAMPLE RECORD SHEET

6-01

<u>SAMPLE#</u>	<u>FROM</u>	<u>TO</u>	<u>LENGTH</u>	<u>AU OZ/TON</u>	<u>DESCRIPTION</u>
11528	15	19	4	.006	GRY/GRN CARB;50% qtz /BRN.POR/2% PY
9	30	35	5	.006	BRN . POR ; 50 % qtz ; ""
11530	35	42	7	.020	" " " " " " " "
1	98	102	4	.010	GRE/GRN.CARB;33% qtz ; 1% PY
2	102	107	5	1.212	PYRITIC POR/15- 20% PY
3	107	111	4	.178	PYRITIC CARB;7%PY
4	111	113.5	2.5	.06	" "; 3% PY
5	113.5	115	1.5	.416	SER'D PYRITIC POR; 10% PY
6	115	119	4	.010	GREY/GRN;33% qtz ;1% PY
7	142	147	5	.022	" "50%"; TR PY
8	152	154.6	2.6	.006	H E M A T I T I C ALTERATION; TR. PY



ST ANDREW GOLDFIELDS LTD.

**PROPERTY** STOCK MINESITE: U/G                      692 EXPLOR. CROSS-CUT  
**LOCATION** 0+04 N; 5+00 W              **BEARING** 332°              **HOLE NO.** 6-02  
**LOGGED BY** O.Z.              **ELEVATION** 9160              **DIP** -60°              **FINAL DEPTH** 307'  
**STARTED** FEB 4/91  
**FINISHED** FEB 13/91              **CORE SIZE** AQ              **DRILLED BY** MINDECON

---

<b>FROM</b>	<b>TO</b>	<b>DESCRIPTION</b>
0.0	56.0	GREY/GREEN CARBONATE: VERY BRECC'D, 33-66% qtz VEINING, FAIR TO GOOD GROUND, TR PY, 80% CORE RECOVERY  48.0-49.5: BROWN POR. 1% PY, LAMINATED
56.0	144.0	TALC CHLORITE SCHIST: MINOR BREAK 56.0-73.0: 33% qtz VLTS, 80% CORE RECOVERY, FAIR GROUND  73.0-95.0: 33% CORE RECOVERY TERRIBLE GROUND CONDITIONS  95.0-144.0: GOOD CORE RECOVERY, VERY MINOR GOUGE SEAMS
144.0	307	GREY/GREEN CARBONATE: GOOD GROUND, GENERALLY 5-10% qtz VLTS, TR. PY, SHEARED AT 45° TO CA,  144.0-189.0: INTERMITTENT INTERVALS OF CHLORITIZED GREY CARBONATE  164.0-165.5: 5% DISS'D PY CUBES 292.0-307: INTERMITTENT REDDISH HEMITIC BANDS  307 END OF HOLE: CORE SPLIT & STORED

ST ANDREW GOLDFIELDS LTD.

SAMPLE RECORD SHEET

6-02

<u>SAMPLE#</u>	<u>FROM</u>	<u>TO</u>	<u>LENGTH</u>	<u>AU OZ/TON</u>	<u>DESCRIPTIONS</u>
11539	144	149	5	.108	CHL'D GREY CARB; TR-1% PY
11540	149	154	5	.010	GREY/GRN CARB; 5% qtz ;TR-1% PY
1	154	159	5	.022	" " " " " " " "
2	159	164	5	.016	CHL'D GREY CARB;" " " " " "
3	164	165.5	1.5	.758	" " " " " ";5% PY
4	165.5	170.5	5.0	.008	GREY/GRN CARB;33% qtz ; TR-1% PY

**ST ANDREW GOLDFIELDS LTD.**

**PROPERTY** STOCK MINESITE: U/G                      692 EXPLOR CROSS-CUT  
**LOCATION** 0+05N; 5+01 W                      **BEARING** 310                      **HOLE NO.** 6-03  
**LOGGED BY** R.J.A.                      **ELEVATION** 9160                      **DIP** -26                      **FINAL DEPTH** 398'  
**STARTED** FEB 14/91  
**FINISHED**                                      **CORE SIZE** AQ                      **DRILLED BY** MINDECON

<b>FROM</b>	<b>TO</b>	<b>DESCRIPTION</b>
0	45	GREY/GREEN CARBONATE: BRECC'D, 33 TO 66% qtz . VEINING LOCALLY, FAIR GROUND, CORE RECOVERY IS 80%, TR-1% PY LOCALLY  30-45: BANDED GRY/GRN CARB AND BRANDED POR. VERY FEW DISTINCT CONTACTS TR. PY
45	91	MINOR BREAK: FAULT ZONE VERY POOR GROUND, SHATTERED CORE, 50% CORE RECOVERY; TR. PY,  45-61: BRECCIATED qtz AND CHLORITE SCHIST, CORE IS VERY GRAVELLY  61-68: GOUGE SEAMS (40% CORE RECOVERY  68-90.5: CHLORITE SCHIST NO GOUGE RECOVERY ABOUT 607.
91	97	GREY/GREEN CARBONATE: CRSE GRAINED, BRECCIATED, 33% qtz VEININS, TR-1% PY DISS'D-GOOD GROUND
97	113.5	PYRITIC CARBONATE: 20% qtz, 5-9% CRSE PY, LIGHT TO DARK GREY IN COLOUR  101-105: PERVASIVE SILICIFATION (40% SIL) PALE GREY, 6-8% PY., - GOOD GROUND
113.5	294.5	GREY GREEN CARBONATE: GOOD GROUND,

10-20% GTZ VLTS, TR PY, SHEARED AT  
30-45° CA. CRSE TO MED GRAINED

116-135: GRY CHL-CARB INTENSE  
SHEARING 30% CA (GNEISIC TEXTURE)

156-CHLORITIC, BRECCIATED (CHEALED  
FAULT) .5 FT LONG

228-243: SLIGHTLY BRECCIATED, 33%  
qtz VEINING, MODERATE SHEARING @50°  
CA, COARSER GRAINED 287' 1/2 FT  
CHL, BRECCIA (CHEALED FAULT)

294.5 345.5 GREY/GREEN CARBONATE & QTZ VEINING:  
VERY BRECCIATED AND ABUNDANT qtz  
VEINING MANY OF WHICH ARE 4-6 INCHES  
IN LENGTH. QTZ VEINING MAKES  
UP 40-60%

PY IS TR-2% BUT LOCALLY TO 5%

345.5 383 GREY/GREEN CARBONATE: 20-30% qtz  
VEINS, TR. TO 5% PY, MOST ABUNDANT  
PY FOUND IN NARROW GREEN CRB. BANDS  
W SHARP CONTACTS. SEVERAL LARGE  
CUBES OF PY SEEN BETWEEN 365 & 375

V.G. IN NARROW WHITE qtz  
VEIN FOUND AT 370°

383 393 CHLORITIZED GREY CARBONATE: COARSE  
GRAINED, CHLORIFIC, TRACE PY, 33%  
qtz, LOCALLY BRECCIATED, GOOD GROUND

393 398 TALC CHLORITE SCHIST: 25% qtz, GOOD  
CORE RECOVERY TR AMOUNTS OF PY

398 END OF HOLE

ST ANDREW GOLDFIELDS LTD.

SAMPLE RECORD SHEET 6-03

<u>SAMPLE#</u>	<u>FROM</u>	<u>TO</u>	<u>LENGTH</u>	<u>AU OZ/TON</u>	<u>DESCRIPTIONS</u>
11545	91	94	3	.010	GRY/GRN CARB: 33% qtz; TR-1% PY
46	94	97	3	.004	" " " " " " "
47	97	101	4	.702	PY'TIC CARB: 20% qtz; 7-9% CRSE PY
48	101	105	4	.428	PY'TIC CARB: 40% SIL; 6-8% CRSE PY
49	105	109	4	.240	PY'TIC CARB: 20% qtz, 6-8% CRSE PY
11550	109	113.5	4.5	.412	" "; 5-7% CRSE PY
51	113.5	118.5	5	.006	GRY GRN CARB: 20% qtz; 1-3% PY DISS
52	118.5	123.5	5	.410	GRY CARB: 30% qtz TR-1% PY DISS
53	297	302	5	.006	GRY/GRN CARB: 60% qtz; 4-5 % PY DISS
54	307	312	5	.004	" " " ": 50% qtz
55	338	342	4	.024	" " " ": 40% qtz
56	355	360	5	.004	" " " ": 30% qtz; 3-5% PY
57	366.5	370.5	4	0.16	" " " " " " "
58	370.5	373.5	3	.008	" " " " " " "

ST ANDREW GOLDFIELDS LTD.

PROPERTY STOCK MINESITE : U/G 6-92 EXP. CROSS-CUT  
LOCATION 0+07 N; 5+01 W BEARING 310° HOLE NO. 6-04  
LOGGED BY R.J.A. ELEVATION 9160 FINAL DEPTH 192  
STARTED MARCH 7/91  
FINISHED MARCH 13/91 TESTS (CORRECTED) NIL

CORE SIZE AQ DRILLED BY MINDECON

<u>FROM</u>	<u>TO</u>	<u>DESCRIPTION</u>
0	15	GREY/GREEN CARBONATE: 33-40% qtz VNLTS, TR-1% PY, CORE LOCALLY FRACTURED & BROKEN, GOOD C.R. (90%), GOOD GROUND
15	18	BROWN FELDSPAR PORPHYRY: 50% qtz, TR-1% PY, LIGHT BROWN, FINE GRAINED, VERY HARD
18	38	GREY/GREEN CARBONATE 33-40% qtz, DARKER GREEN THAN THE 0-15 UNIT (MORE CHLORITE) TR-1% PY, GOOD GROUND
38	41	SERICITIC PORPHYRY COMPLEX: 2-3% FINE DISEMINATED PY, 33% qtz YELLOWISH BROWN, FINE GRAINED, VERY HARD
		*NOTE FROM 43-77 (TWO CORE BOXES), THE CORE IS ALL MIXED UP AND 75% HAS BEEN LOST. THIS IS THE RESULT OF THE BOXES BEING RUN OVER BY A SCOOP TRAM AND BROKEN OPEN
41	83	INTERMITTENT (ALTERNATING) BANDS OF CHLORITE SCHIST AND SERICITIZED SHEARED GRN CARBONATE
		TR-1% PY, 20-30% qtz OCCASIONAL SPECULAR HEINITITE, FROM WHAT I CAN SEE GROUND IS FAIR TO GOOD. ESPECIALLY FROM 65' AND ON BECAUSE MOST OF THE CORE THAT REMAINS CONSISTS OF THE GREY FINE GRAINED SHEARED CARBONATE

- 83            87    **FAULT GAUGE: CLAY LIKE, PALE GREY, 50% OF CORE RECOVERY. VERY BAD GROUND**
- 87            99    **TALC CHLORITE SCHIST: 33% qtz TR-1% PY, DARK GREEN MIXTURE OF qtz & CHLORITE SOME GRY CARB. BANDS GROUND IS FAIR TO POOR**
- 99            110   **CHLORITIZED GRY CARBONATE; 33% qtz TR. PY, GOOD GROUND**
- 110          128.5 **SHEARED GREY CARBONATE: 33% qtz, DARK TO MED GREY, TR-1% PY, SHEARING @45° CA**
- 128.3       144.5 **PYRITIC CARBONATE & POPYRY: 5-15% CRSE PY, 20-40% qtz IN VEINS AND PERVASIVE, SMALL BROKEN UP BROWN PY'TIC POR. ARE SEEN LOCALLY (SEE SAMPLE SHEET)**
- 144.5       175   **GREY/GREEN CARBONATE: DARK GREEN AND GREY CARB SECTIONS, MODERATE LARDNESS, MEDIUM GRAINED, TR-1% PY LOCALLY, 33% qtz veinletts, shearing at 35° CA. GOOD GROUND**
- 175          192   **SILICIFIED GREEN CARBONATE: LIGHT GREEN, WITH SHADES OF PINK VERY HARD 33-50% qtz VEINS & PERVASIVE SILICIFICATION, ALSO HEINITIED AS INDICATED BY PINKISH HUE TR. PY VERY MASSIVE. GOOD GROUND**
- 192   **EOH. CORE PARTIALLY SAMPLED AND SAVED**

ST ANDREW GOLDFIELDS LTD.

SAMPLE RECORD SHEET

6-04

<u>SAMPLE#</u>	<u>FROM</u>	<u>TO</u>	<u>LENGTH</u>	<u>AU OZ/TON</u>	<u>DESCRIPTION</u>
11582	38	41	3	.014	SER.FOR COMP: 33% qtz 2-3% PY
11583	124	128.5	5	.108	SHR'D GRY CARB: 20-30% qtz, TR-1% PY
11584	128.5	132	3.5	1.352	PY'TIC CARB: 20- 33% qtz 5% CRSE PY
85	132	137	5	.250	PY'TIC CARB: 33- 40% qtz 10-15% CRSE PY
86	137	141	4	.362	PY'TICARB/FOR: "" ""
87	141	144.5	3.5	.442	" " " " " " " "
88	144.5	149.5	5	.088	GRY/GRN CARB: 33% qtz; TR-1% PY



ST ANDREW GOLDFIELDS LTD.

**PROPERTY** STOCK MINESITE: U/G      6-92 EXPLORATION CROSS-CUT  
**LOCATION** 0+04N    5+04W      **BEARING**      283°      **HOLE NO**    6-05  
**LOGGED BY** R.J.A.      **ELEVATION** 1964      **DIP** 0°      **FINAL DEPTH** 196  
**STARTED**    FEB 26/91  
**FINISHED**   FEB 28/91      **TESTS (CORRECTED)** NIL  
**CORE SIZE** AQ      **DRILLED BY** MINDECON

---

<b>FROM</b>	<b>TO</b>	<b>DESCRIPTION</b>
0	24	GREY/GREEN CARBONATE 33-40% qtz, TR-1% PY DISS'D LOCALLY, VERY BLOCKY, FAIR GROUND (75% CR.)
24	76	SERICITIZED SHEARED GRY: CARBONATE 33-40% qtz VNS., CORE IS VERY HARD, FOLIATIONS AND qtz VNLTS AT 50° C.A., NO PY SEEN, CORE IS VERY SHATTERED, IN PLACES, CORE RECOVERY, ABOUT 75%, LOCALLY SERICITIZED
76	141	TALC CHLORITE SCHIST: 20-30% qtz TR-1% PY DISSEMINATED, OCCASIONAL GREY CHL. CARBONATE BAND. BECOMING MORE CHLORITIC AND SILICIFIED WITH DEPTH. FOLIATION IS AT 30° CA  -MUD SEAM AT 80' -80' TO 90' ONLY 50% CR -121-141: CORE BROKEN UP, SOME GOUGY SECTIONS, ONY 60% CORE RECOVERY
141	164	CHORITIZED GREY CARBONATE: -33-40% qtz TR-2% PY DISS. GOOD GROUND-- 159-164: 40% qtz, 2-3 % DISS PY
164	170	PYRITE CARB & PYRITIC PORPHYRY 20-30% qtz, 15-20% CRSE PY GOOD GROUND
170	196	CHORITIZED GRY CARBONATE: 20-33% qtz, TR-3% PY LOCALLY. GOOD GROUND
	196	END OF HOLE: CORE PARTIALLY SAMPLED AND REMAINING CORE STORED

**ST ANDREW GOLDFIELDS LTD.**

**HOLE NO.: 6-05**

**S A S GRID**

<b>FOOTAGE</b>	<b>NORTHING</b>	<b>EASTING</b>	<b>ELEVATION</b>	<b>DIP</b>	<b>AZIMUTH</b>
<b>COLLAR</b>	<b>4</b>	<b>-504</b>	<b>9164</b>	<b>0</b>	<b>283</b>
<b>25</b>	<b>20</b>	<b>-523</b>	<b>9164</b>	<b>0</b>	<b>283</b>
<b>27.6</b>	<b>22</b>	<b>-525</b>	<b>9164</b>	<b>0</b>	<b>283</b>
<b>50</b>	<b>37</b>	<b>-542</b>	<b>9164</b>	<b>0</b>	<b>283</b>
<b>75</b>	<b>53</b>	<b>-561</b>	<b>9164</b>	<b>0</b>	<b>283</b>
<b>94</b>	<b>66</b>	<b>-575</b>	<b>9164</b>	<b>0</b>	<b>283</b>
<b>100</b>	<b>70</b>	<b>-579</b>	<b>9164</b>	<b>0</b>	<b>283</b>
<b>125</b>	<b>86</b>	<b>-598</b>	<b>9164</b>	<b>0</b>	<b>283</b>
<b>127</b>	<b>87</b>	<b>-600</b>	<b>9164</b>	<b>0</b>	<b>283</b>
<b>150</b>	<b>102</b>	<b>-617</b>	<b>9164</b>	<b>0</b>	<b>283</b>
<b>160</b>	<b>109</b>	<b>-625</b>	<b>9164</b>	<b>0</b>	<b>283</b>
<b>175</b>	<b>119</b>	<b>-636</b>	<b>9164</b>	<b>0</b>	<b>283</b>
<b>193</b>	<b>131</b>	<b>-650</b>	<b>9164</b>	<b>0</b>	<b>283</b>
<b>196</b>	<b>133</b>	<b>-652</b>	<b>9164</b>	<b>0</b>	<b>283</b>
<b>END</b>					

ST ANDREW GOLDFIELDS LTD.

SAMPLE RECORD SHEET 6-05

<u>SAMPLE#</u>	<u>FROM</u>	<u>TO</u>	<u>LENGTH</u>	<u>AU OZ/TON</u>	<u>DESCRIPTIONS</u>
11562	159	164	5	.010	GRY CARB: 40% qtz 2-3% PY
63	164	167	3	.380	PY'TIC CARB/POR: 25% qtz; 15-20% CISE PY
64	167	170	3	.480	" " " " " " ; ""'
65	170	175	5	.008	CHL GRY/CARB: 20% qtz TR-1% PY
66	175	179	4	.004	GRY. FELD POR: 20% qtz; 2-3% PY DISS
67	179	182.5	3.5	.004	" " " "" ; TR-1% PY DISS
68	182.5	184.5	2	.010	PY'TIC CARB: 25% qtz; 5% CRSE PY
69	184.5	189.5	5	.068	CHL GRY/CARB: 33% qtz; 2-3% PY DISS

ST ANDREW GOLDFIELDS LTD.

PROPERTY STOCK MINESITE: U/G

6TH LEVEL CROSS-CUT

LOCATION 0+10N; 4+82 W      BEARING 3°      HOLE NO. 6-06

LOGGED BY O.Z      ELEVATION 9159      DIP -55°      FINAL DEPTH 462.0

STARTED JUNE 5/91

FINISHED JUNE 14/91

CORE SIZE      AQ      DRILLED BY MINDECON

---

<u>FROM</u>	<u>TO</u>	<u>DESCRIPTION</u>
0.0	53.0	GREY/GREEN CARBONATE: 66% qtz BRECCIA, FAIR TO POOR GROUND, TR. PY
53.0	57.0	LOST CORE: MINOR BREAK VERY BAD GROUND
57.0	94.5	TALC CHLORITE SCHIST: MINOR BREAK BAD TO VERY BAD GROUND
94.5	128.0	CHLORITIZED GREY CARBONATE: FAIR TO GOOD GROUND, BLACK TO DRK GREY, 5% qtz VLTS TR.PY
128.0	258.5	GREY CARBONATE: VERY GOOD GROUND, 5% qtz VLTS, TR. PY 172.0-177.0: PY'TIC GREY POR/CARB; 15% CRSE PY. 186.0-198.0: GREY CARB; 2-3% DISS'D PY. 198.0-202.0: PY'TIC GREY POR/CARB; 10-15% PY  222.0-250.0: PROMINENT SHEARING AT MOD. ANGLES; GOOD TO FAIR GROUND, TR. PY 25% qtz VLTS.
258.5	320.8	GREEN CARBONATE: 25-33% qtz VLTS, BRECC'D TR PY GOOD GROUND, BECOMING VERY BLC'D TOWARDS BOTTOM CONTACT
320.8	462.0	TALC CHLORITE SCHIST: MAJOR BREAKS FAIR GROUND, GOOD CORE RECOVERY, TR PY, FREQUENT GOUGE SEAMS
	462.0	END OF HOLE: SAMPLES ASSAYED WHOLE; CORE STORED

---

ST ANDREW GOLDFIELDS LTD.

SAMPLE RECORD SHEET

6-06

<u>SAMPLE#</u>	<u>FROM</u>	<u>TO</u>	<u>LENGTH</u>	<u>AU OZ/TON</u>	<u>DESCRIPTION</u>
12157	139	144	5.0	.019	GREY CAR; 5% qtz ; TRPY
8	144	146	2.0	1.318	PY'TIC CARB; 10% PY
9	146	150.2	4.2	.008	GREY CARB; 5% qtz ; TR PY
12160	150.2	152.2	2.0	.164	PY'TIC CARB; 10-15% PY
1	152.2	157.2	5.0	.012	GREY CARB; 5% qtz ;TR-1%TR PY
2	167.0	172	5.0	.010	GREY CARB;" " ;TR-1% PY
3	172.0	177.0	5.0	.414	PY'TIC GREY POR/CARB; 15% PY
4	177	182	5.0	.008	BLC'D GREY/GRN; 5% qtz ;TR PY
5	182	186	4.0	.004	" " " " " " " " " " " "
6	186	190	4.0	.104	GREY CARB; 5% qtz ;2-3% PY
7	190	195	5.0	.020	" " " " " " " " " " " "
8	195	198	3.0	.024	" " " " " " " " " " " "
9	198	202	4.0	.260	PY'TIC GREY POR/CARB; 10-15% PY
12170	202	207	5.0	.030	GREY/GRN CARB; 10% qtz ,TR.PY

**ST ANDREW GOLDFIELDS LTD.**

**HOLE NO. 6-06**

**S A S GRID**

<b><u>FOOTAGE</u></b>	<b><u>NORTHING</u></b>	<b><u>EASTING</u></b>	<b><u>ELEVATION</u></b>	<b><u>DIP</u></b>	<b><u>AZIMUTH</u></b>
<b>COLLAR</b>	<b>10</b>	<b>-482</b>	<b>9159</b>	<b>-55</b>	<b>3</b>
<b>24</b>	<b>22</b>	<b>-475</b>	<b>9139</b>	<b>-55</b>	<b>3</b>
<b>25</b>	<b>22</b>	<b>-475</b>	<b>9139</b>	<b>-55</b>	<b>3</b>
<b>50</b>	<b>35</b>	<b>-467</b>	<b>9118</b>	<b>-55</b>	<b>3</b>
<b>75</b>	<b>47</b>	<b>-460</b>	<b>9098</b>	<b>-55</b>	<b>3</b>
<b>100</b>	<b>59</b>	<b>-452</b>	<b>9077</b>	<b>-55</b>	<b>3</b>
<b>109</b>	<b>64</b>	<b>-450</b>	<b>9070</b>	<b>-55</b>	<b>3</b>
<b>125</b>	<b>71</b>	<b>-445</b>	<b>9057</b>	<b>-55</b>	<b>3</b>
<b>150</b>	<b>84</b>	<b>-438</b>	<b>9036</b>	<b>-55</b>	<b>3</b>
<b>175</b>	<b>96</b>	<b>-430</b>	<b>9016</b>	<b>-55</b>	<b>3</b>
<b>193</b>	<b>105</b>	<b>-425</b>	<b>9001</b>	<b>-55</b>	<b>3</b>
<b>200</b>	<b>108</b>	<b>-423</b>	<b>8995</b>	<b>-55</b>	<b>3</b>
<b>225</b>	<b>121</b>	<b>-416</b>	<b>8975</b>	<b>-55</b>	<b>3</b>
<b>250</b>	<b>133</b>	<b>-408</b>	<b>8954</b>	<b>-55</b>	<b>3</b>
<b>275</b>	<b>145</b>	<b>-401</b>	<b>8934</b>	<b>-55</b>	<b>3</b>
<b>278</b>	<b>147</b>	<b>-400</b>	<b>8931</b>	<b>-55</b>	<b>3</b>
<b>300</b>	<b>157</b>	<b>-393</b>	<b>8913</b>	<b>-55</b>	<b>3</b>
<b>325</b>	<b>170</b>	<b>-386</b>	<b>8893</b>	<b>-55</b>	<b>3</b>
<b>350</b>	<b>182</b>	<b>-379</b>	<b>8872</b>	<b>-55</b>	<b>3</b>
<b>363</b>	<b>188</b>	<b>-375</b>	<b>8862</b>	<b>-55</b>	<b>3</b>
<b>375</b>	<b>194</b>	<b>-371</b>	<b>8852</b>	<b>-55</b>	<b>3</b>
<b>400</b>	<b>207</b>	<b>-364</b>	<b>8831</b>	<b>-55</b>	<b>3</b>
<b>425</b>	<b>219</b>	<b>-356</b>	<b>8811</b>	<b>-55</b>	<b>3</b>

<b>447</b>	<b>230</b>	<b>-350</b>	<b>8793</b>	<b>-55</b>	<b>3</b>
<b>450</b>	<b>231</b>	<b>-349</b>	<b>8780</b>	<b>-55</b>	<b>3</b>
<b>462</b>	<b>237</b>	<b>-346</b>	<b>8780</b>	<b>-55</b>	<b>3</b>
<b>END</b>					

ST ANDREW GOLDFIELDS LTD.

**PROPERTY** STOCK MINESITE: U/G                      6TH LEVEL CROSS-CUT  
**LOCATION** 0+10 N; 4+82 W              **BEARING** 3°              **HOLE NO.** 6-07  
**LOGGED BY** O.Z. **ELEVATION** 9159              **DIP** -65°              **FINAL DEPTH** 82.0'  
**STARTED** JUNE 17/91  
**FINISHED** JUNE 18/91              **CORE SIZE** AQ              **DRILLED BY** MINDECON

---

<b>FROM</b>	<b>TO</b>	<b>DESCRIPTION</b>
0.0	47.5	GREY/GREEN CARBONATE: 33-60% qtz VEINNING, BRACC'D GENERALLY TR. PY, GOOD TO FAIR GROUND, BECOMING MORE CHL'D WITH DEPTH.
47.5	82.0	TALC CHLORITE SCHIST: MINOR BREAK VERY POOR GROUND, 40% CORE RECOVERY, INTERMITTENT LOW ANGLED FAULTS TO CA
	82.0	END OF HOLE: HOLE ABANDONED SINCE WATER RETURN WAS LOST. - NO SAMPLES TAKEN; CORE STORED

---



ST ANDREW GOLDFIELDS LTD.

**PROPERTY** STOCK MINESITE: U/G 6-92 EXPLOR. CROSS-CUT  
**LOCATION** 0+00N 5+06W **BEARING** 210° **HOLE NO.** 6-08  
**LOGGED BY** R.J.A. **ELEVATION** 9164 **DIP** 0° **FINAL DEPTH** 425  
**STARTED** FEB 20/91  
**FINISHED** FEB 25/ 91 **CORE SIZE** AQ **DRILLED BY** MINDECON

<b>FROM</b>	<b>TO</b>	<b>DESCRIPTION</b>
0	29	GREY/GREEN CARBONATE: BRECC'D, 33-66% qtz. VEINING LOCALLY, FAIR GROUND, WITH CORE RECOVERIES OF 80%, SHATTERED CORE, TR-1% PY LOCALLY
29	56	CHLORITE SCHIST: 20-33% qtz., LOCALLY BRECC'D POOR GROUND 70% CORE RECOVERY SOME GOUGY SECTIONS, TR. PY, CORE VERY BROKEN UP
56	83.5	GREY/GREEN CARBONATED 20-33% qtz, LOCALLY BRECC'D, OCCASIONAL GREY FELD. POOR BAND, TR-2% PY, GOOD GROUND  56-57 GREY FELDSPAR PORPHYRY-HARD, FINE GRAINED, TR-1% JPY  72-75 SERICITIC PORPHYRY COMPLEX YELLOWISH BROWN, FINE GRAINED, VERY HARD, 2-3% PY DISS'D, TR-1% CPY LOCALLY
83.5	280	TALC CHLORITE SCHIST 20-33% qtz, CORE RECOVERIES FAIR TO GOOD, OCCASIONAL GOUGE SEAM BUT ONLY LOCALLY, TR-1% PY DISS. CORE IS DARK GREEN TO BLACK  OCCASIONAL qtz OR FELD POR BND TO 2" WIDE  SCHISTOSITY AT 40° CA -- CORE RECOVERY IMPROVES AFTER 166' 232-234: BROWN FELDSPAR PORPHYRY: 40% qtz VNLTS. TR-1% PY-- 237.5-240.5: GREY/BROWN FELDSPAR PORPHYRY -33% qtz VNLTS, TR-1% PY--243-244: SAME AS ABOVE



**ST ANDREW GOLDFIELDS LTD.**

**HOLE NO.: 6-08**

**S A S GRID**

<b>FOORTAGE</b>	<b>NORTHING</b>	<b>EASTING</b>	<b>ELEVATING</b>	<b>DIP</b>	<b>AZIMUTH</b>
<b>COLLAR</b>	<b>0</b>	<b>-506</b>	<b>9160</b>	<b>0</b>	<b>210</b>
<b>22</b>	<b>-12</b>	<b>-525</b>	<b>9160</b>	<b>0</b>	<b>210</b>
<b>25</b>	<b>-13</b>	<b>-527</b>	<b>9160</b>	<b>0</b>	<b>210</b>
<b>50</b>	<b>-26</b>	<b>-548</b>	<b>9160</b>	<b>0</b>	<b>210</b>
<b>75</b>	<b>-40</b>	<b>-570</b>	<b>9160</b>	<b>0</b>	<b>210</b>
<b>81</b>	<b>-43</b>	<b>-575</b>	<b>9160</b>	<b>0</b>	<b>210</b>
<b>100</b>	<b>-53</b>	<b>-591</b>	<b>9160</b>	<b>0</b>	<b>210</b>
<b>125</b>	<b>-66</b>	<b>-612</b>	<b>9160</b>	<b>0</b>	<b>210</b>
<b>140</b>	<b>-74</b>	<b>-625</b>	<b>9160</b>	<b>0</b>	<b>210</b>
<b>150</b>	<b>-79</b>	<b>-633</b>	<b>9160</b>	<b>0</b>	<b>210</b>
<b>175</b>	<b>-93</b>	<b>-654</b>	<b>9160</b>	<b>0</b>	<b>210</b>
<b>199</b>	<b>-105</b>	<b>-675</b>	<b>9160</b>	<b>0</b>	<b>210</b>
<b>200</b>	<b>-106</b>	<b>-676</b>	<b>9160</b>	<b>0</b>	<b>210</b>
<b>225</b>	<b>-119</b>	<b>-697</b>	<b>9160</b>	<b>0</b>	<b>210</b>
<b>250</b>	<b>-132</b>	<b>-718</b>	<b>9160</b>	<b>0</b>	<b>210</b>
<b>258</b>	<b>-137</b>	<b>-725</b>	<b>9160</b>	<b>0</b>	<b>210</b>
<b>275</b>	<b>-146</b>	<b>-739</b>	<b>9160</b>	<b>0</b>	<b>210</b>
<b>300</b>	<b>-159</b>	<b>-760</b>	<b>9160</b>	<b>0</b>	<b>210</b>
<b>317</b>	<b>-168</b>	<b>-775</b>	<b>9160</b>	<b>0</b>	<b>210</b>
<b>325</b>	<b>-172</b>	<b>-782</b>	<b>9160</b>	<b>0</b>	<b>210</b>
<b>350</b>	<b>-185</b>	<b>-803</b>	<b>9160</b>	<b>0</b>	<b>210</b>
<b>375</b>	<b>-199</b>	<b>-824</b>	<b>9160</b>	<b>0</b>	<b>210</b>
<b>376</b>	<b>-199</b>	<b>-825</b>	<b>9160</b>	<b>0</b>	<b>210</b>
<b>400</b>	<b>-212</b>	<b>-845</b>	<b>9160</b>	<b>0</b>	<b>210</b>
<b>425</b>	<b>-225</b>	<b>-866</b>	<b>9160</b>	<b>0</b>	<b>210</b>

**END**

ST ANDREW GOLDFIELDS LTD.

**PROPERTY** STOCK MINESITE: U/G

**6-92 EXPLORATION CROSS-CUT**

**LOCATION** 0+00 N      5+06 W    **BEARING** 242°    **HOLE NO.** 6-09

**LOGGED BY** R.J.A.    **ELEVATION** 9164    **DIP** 0°    **FINAL DEPTH** 60

**STARTED** FEB 25/91

**FINISHED** FEB 26/91      **CORE SIZE**      AQ    **DRILLED BY** MINDECON

---

<b>FROM</b>	<b>TO</b>	<b>DESCRIPTION</b>
0	56	GREY/GREEN CARBONATE: 30-40% qtz, TR-1% PY, CORE IS EXTREMELY BROKEN UP BECOMING MORE CHLORITIZED TOWARDS BOTTOM 60% CORE RECOVERY
56	60	TALC CHLORITE SCHIST: VERY GROUND UP, 10% C.R. END OF HOLE: CORE STORED

**ST ANDREW GOLDFIELDS LTD.**

**PROPERTY: STOCK MINESITE: U/G**

**6TH LEVEL U/G**

**LOCATION** 0+90 S; 4+96 W **BEARING** 337° **HOLE NO.:** 6-10A

**LOGGED BY:** O.Z. **ELEVATION** 9159 **DIP** -65°

**FINALD DEPTH** 512.0

**STARTED** JUNE 5/91

**FINISHED** JUNE 26/91

**CORE SIZE** AQ **DRILLED BY** MINDECON

<b>FROM</b>	<b>TO</b>	<b>DESCRIPTION</b>
0.0	132.0	TALC CHLORITE SCHIST: SOUTH FAULT POOR GROUND, INTERMITTANT GOUGE SEAMS, TR. PY, 50-60% CORE RECOVERY IN GENERAL
132.0	202.0	GREY CARBONATE: 33-66% qtz VLTS., TR. PY, GOOD GROUND. INTERMITTENT SHRID & CHL'D INTERVALS
202.0	272.0	TALC CHLORITE SCHIST: MINOR BREAK BAD GROUND, INTERMITTENT GOUGE SEAMS,  213.0-216.5: DIABASE VLT., BLACK FINE TO MED. GR., MAGNETIC, HEAVY, SHARP CONTACTS
272.0	386.0	CHLORITIZED GREY CARBONATE: DARK GREY, FINE TO MED. GR., 5% qtz VLTS., TR.PY, GOOD TO FAIR GROUND CONDITIONS, SHRD AT MOD. ANGLES, INTERMITTENT MINOR FAULTS & JOINTS AT LOW ANGLES TO CA, 284.0-285.0: 5% CUSE PY IN LIGHT GREY BND'G

386.0      446.0

GREY/GREEN CARBONATE:  
GOOD GROUND, 5-10% qtz  
VLTS., TR PY, SHRD AT  
MOD. ANGLES BECOMING  
CHL'D TOWARDS LOWER  
CONTACT

446.0      512.0

TALC CCHLORITE SCHIST:  
MAJOR BREAK POOR GROUND  
CONDITIONS, INTERMITTENT  
GOUGE SEAMS, TR. PY, 80%  
CORE RECOVERY

470.5-472.5: SMOKEY GREY  
qtz

512.0

END OF HOLE: SAMPLES  
ASSAYED WHOLE CORE STORED

**ST ANDREW GOLDFIELDS LTD.**

**HOLE NO.: 6-10A**

**S A S GRID**

<b>FOOTAGE</b>	<b>NORTHING</b>	<b>EASTING</b>	<b>ELEVATION</b>	<b>DIP</b>	<b>AZIMUTH</b>
<b>COLLAR</b>	<b>-90</b>	<b>-496</b>	<b>9159</b>	<b>-65</b>	<b>337</b>
<b>25</b>	<b>-79</b>	<b>-495</b>	<b>9136</b>	<b>-65</b>	<b>337</b>
<b>50</b>	<b>-69</b>	<b>-494</b>	<b>9114</b>	<b>-64</b>	<b>337</b>
<b>75</b>	<b>-58</b>	<b>-493</b>	<b>9091</b>	<b>-64</b>	<b>337</b>
<b>100</b>	<b>-47</b>	<b>-492</b>	<b>9069</b>	<b>-64</b>	<b>337</b>
<b>125</b>	<b>-36</b>	<b>-491</b>	<b>9046</b>	<b>-64</b>	<b>337</b>
<b>150</b>	<b>-25</b>	<b>-490</b>	<b>9024</b>	<b>-63</b>	<b>337</b>
<b>175</b>	<b>-14</b>	<b>-489</b>	<b>9002</b>	<b>-63</b>	<b>337</b>
<b>200</b>	<b>-3</b>	<b>-488</b>	<b>8979</b>	<b>-63</b>	<b>337</b>
<b>225</b>	<b>9</b>	<b>-487</b>	<b>8957</b>	<b>-63</b>	<b>337</b>
<b>250</b>	<b>21</b>	<b>-486</b>	<b>8935</b>	<b>-63</b>	<b>337</b>
<b>275</b>	<b>33</b>	<b>-485</b>	<b>8913</b>	<b>-60</b>	<b>337</b>
<b>300</b>	<b>46</b>	<b>-484</b>	<b>8892</b>	<b>-59</b>	<b>337</b>
<b>325</b>	<b>59</b>	<b>-483</b>	<b>8870</b>	<b>-58</b>	<b>337</b>
<b>350</b>	<b>72</b>	<b>-482</b>	<b>8849</b>	<b>-57</b>	<b>337</b>
<b>375</b>	<b>86</b>	<b>-481</b>	<b>8829</b>	<b>-56</b>	<b>337</b>
<b>400</b>	<b>100</b>	<b>-479</b>	<b>8808</b>	<b>-55</b>	<b>337</b>
<b>425</b>	<b>114</b>	<b>-478</b>	<b>8788</b>	<b>-54</b>	<b>337</b>
<b>450</b>	<b>129</b>	<b>-477</b>	<b>8767</b>	<b>-53</b>	<b>337</b>
<b>475</b>	<b>144</b>	<b>-476</b>	<b>8748</b>	<b>-52</b>	<b>337</b>
<b>485</b>	<b>150</b>	<b>-475</b>	<b>8740</b>	<b>-52</b>	<b>337</b>
<b>500</b>	<b>160</b>	<b>-474</b>	<b>8728</b>	<b>-51</b>	<b>337</b>
<b>512</b>	<b>167</b>	<b>-474</b>	<b>8719</b>	<b>-51</b>	<b>337 END</b>

ST ANDREW GOLDFIELDS LTD.

SAMPLE RECORD SHEET

6-10A

<u>SAMPLE#</u>	<u>FROM</u>	<u>TO</u>	<u>LENGTH</u>	<u>AU OZ/TON</u>	<u>DESCRIPTIONS</u>
121171	280	284	4.0	.004	CHL'D GREY; 5% qtz ; TR.PY
2	284	285	1.0	.050	" " ; 20% " ; 5% PY
3	285	290	5.0	.002	GREY CARB; " ; 1-2% PY
4	290	292	2.0	.002	CHL'D GREY; 5% qtz TR-1% PY
5	292	297	5.0	.002	" " ; " " TR PY
6	317	322	5.0	.066	" " ; 10% " 1-2% PY
7	322	325	3.0	.002	" " " " 1-2% PY
8	470.5	472.5	2.5	.002	qtz VEIN; 10% T.C.S.; 1% PY



ST ANDREW GOLDFIELDS LTD.

SAMPLE RECORD SHEET

6-10A

<u>SAMPLE#</u>	<u>FROM</u>	<u>TO</u>	<u>LENGTH</u>	<u>AU OZ/TON</u>	<u>DESCRIPTIONS</u>
11570	171.5	177	5.5	.044	--SIL SHR'D GRY CARB: 33-50% qtz ; 2-3% PY
71	177	181	4	.110	--SHR'D GRY CARB: 33% qtz ; 2-3% PY
72	181	185	4	.004	--" " " " " " " " " " " "
73	185	188.5	3.5	.006	--" " " " " " " " " " " "
74	188.5	193.5	5	.008	--INT DYKER: 20% qtz : 1-2% PY DISS
75	193.5	197.5	4	.004	--GRY/GRN SHR'D CARB: 33% qtz : 1-2% PY DISS
76	197.5	200.5	3	.004	--" " " " " " " " " " " "

ST ANDREW GOLDFIELDS LTD.

**PROPERTY** STOCK MINESITE: U/G                      6-92 EXPLORATION CROSS-CUT  
**LOCATION** 0+04 N    5+04W                      **BEARING** 283                      **HOLE NO.** 6-10  
**LOGGED BY** R.J.A.                      **ELEVATION** 9161    **DIP** -35                      **FINAL DEPTH** 351.0  
**STARTED** FEB 28/91                      **TESTS(CORRECTED)** NIL  
**FINISHED**                      **CORE SIZE** AQ    DRILLED BY MINDECON

---

<b>FROM</b>	<b>TO</b>	<b>DESCRIPTION</b>
0	31	GREY/GREEN CARBONATE: 33-50% qtz VEINS TR-1% PY DISS'D. GOOD GROUND  14-15: BROWN FELD POR-40% qtz TR-1% PY
31	53	CHLORITIZED GREY CARBONATE: 33% qtz TR PY, CORE BADLY BROKEN UP (BLOCKY)
53	97	SHEARED GREY CARBONATE BUFF TO GREY IN COLOUR, 33-40% qtz VEINS, NO VISSIBLE PY, LOCALLY SERICITIZED, HARDNESS VARIES FROM VERY HRD TO QUITE SOFT DEPENDING ON RELATIVE AMOUNTS OF qtz AND CHLORITE, GROUND APPEARS TO BE GOOD  BECOMING MORE CHLORITIC FROM 70° ON SHEARING IN VARIES FROM 0° TO 30° CORE ANGLE
97	127	TALC CHLORITE SCHIST: 33% qtz, GREY TO BLUE BLACK, IN PLACES, FAULT GOUGE, AND CHLORITE SEAMS, THROUGHOUT, FOLIATIONS @ 30° CA, BUT ALSO OCCUR AT ALL OTHER ANGLES LOCALLY
127	137	CHLORITIZED GREY CARBONATE 20-30% qtz, SHEAR ANGLE @ 35° CA BECOMING LESS CHLORITIZED
137	188.5	SHEARED GREY CARBONATE 33-50% qtz PERVASIVE AND VEINING, AMOUNTS OF CHLORITE, MODERATLY HARD TO VERY HARD DEPENDING ON RELATIVE AMOUNTS OF CHLORITE, SHEARING AT 40° CA, TR- 1% PY UP TO 5% CRSE PY LOCALLY 146- 188.5 MORE CHLORITIC, PY INCREASING

TOWARDS BOTTOM OF UNIT SOME PLACES  
UP TO 5% BUT AVERAGE PROBABLY 1-3 %

188.5 193.5 INTERMEDIATE DYKE: FINE GRAINED  
MASSIVE, BLACK, HARD BLEACHED  
CONTACTS. 1-2% DISS PY 20% qtz.  
GOOD GROUND

193.5 351 GREY/GREEN CARBONATE: 20-30% qtz,  
TR-2% DISS PY, LOCALLY PY TO 5% OVER  
NARROW WIDTHS, VERY LITTLE PY AFTER  
221 FT. (TR-1%), LOCALLY BRECCIATED  
BUT CORE RECOVERY IS VERY GOOD.  
GROUND IS GOOD

351 END OF HOLE: CORE PARTIALLY SAMPLED  
AND THE REST STORED

**ST ANDREW GOLDFIELDS LTD.**

**HOLE NO.: 6-10**

**S A S GRID**

<b>FOOTAGE</b>	<b>NORTHING</b>	<b>EASTING</b>	<b>ELEVATION</b>	<b>DIP</b>	<b>AZIMUTH</b>
<b>COLLAR</b>	<b>4</b>	<b>-504</b>	<b>9161</b>	<b>-35</b>	<b>283</b>
<b>25</b>	<b>17</b>	<b>-519</b>	<b>9147</b>	<b>-35</b>	<b>283</b>
<b>50</b>	<b>31</b>	<b>-535</b>	<b>9132</b>	<b>-35</b>	<b>283</b>
<b>74</b>	<b>44</b>	<b>-550</b>	<b>9119</b>	<b>-35</b>	<b>283</b>
<b>75</b>	<b>44</b>	<b>-550</b>	<b>9118</b>	<b>-35</b>	<b>283</b>
<b>100</b>	<b>58</b>	<b>-566</b>	<b>9104</b>	<b>-35</b>	<b>283</b>
<b>125</b>	<b>71</b>	<b>-581</b>	<b>9089</b>	<b>-35</b>	<b>283</b>
<b>150</b>	<b>85</b>	<b>-597</b>	<b>9075</b>	<b>-35</b>	<b>283</b>
<b>155</b>	<b>87</b>	<b>-600</b>	<b>9072</b>	<b>-35</b>	<b>283</b>
<b>175</b>	<b>98</b>	<b>-612</b>	<b>9061</b>	<b>-35</b>	<b>283</b>
<b>195</b>	<b>109</b>	<b>-625</b>	<b>9049</b>	<b>-35</b>	<b>283</b>
<b>200</b>	<b>111</b>	<b>-628</b>	<b>9046</b>	<b>-35</b>	<b>283</b>
<b>225</b>	<b>125</b>	<b>-643</b>	<b>9032</b>	<b>-35</b>	<b>283</b>
<b>236</b>	<b>131</b>	<b>-650</b>	<b>9025</b>	<b>-35</b>	<b>283</b>
<b>250</b>	<b>138</b>	<b>-659</b>	<b>9017</b>	<b>-35</b>	<b>283</b>
<b>275</b>	<b>152</b>	<b>-674</b>	<b>9003</b>	<b>-35</b>	<b>283</b>
<b>276</b>	<b>152</b>	<b>-675</b>	<b>9003</b>	<b>-35</b>	<b>283</b>
<b>300</b>	<b>165</b>	<b>-689</b>	<b>8989</b>	<b>-35</b>	<b>283</b>
<b>317</b>	<b>174</b>	<b>-700</b>	<b>8979</b>	<b>-35</b>	<b>283</b>
<b>325</b>	<b>179</b>	<b>-705</b>	<b>8974</b>	<b>-35</b>	<b>283</b>
<b>350</b>	<b>192</b>	<b>-720</b>	<b>8960</b>	<b>-35</b>	<b>283</b>
<b>351</b>	<b>193</b>	<b>-721</b>	<b>8959</b>	<b>-35</b>	<b>283</b>

**END**

ST ANDREW GOLDFIELDS LTD.

PROPERTY: STOCK MINE SITE: U/G

6-92 EXP. CROSS-CUT

LOCATION: 0+04 N 5+04W      BEARING 283      HOLE NO.: 6-11

LOGGED BY: R.J.A.      ELEVATION 9165      DIP +8

FINAL DEPTH 221

STARTED MAR 5/91      TESTS (CORRECTED) NIL

FINISHED MAR 7/91      CORE SIZE AQ DRILLED BY MINDECON

---

<u>FROM</u>	<u>TO</u>	<u>DESCRIPTION</u>
0	19	GREY GREEN CARBONATE: 20-33% qtz VEINING, CORE RECOVERY IS APPROX. 90%, BUT CORE IS VERY BRITTLE AND BROKEN UP LOCALLY, THE GROUND CONDITIONS ARE FAIR, TR-1% PY
19	71	SHEARED SERICITIZED GREY CARBONATE: BUFF GREY, SHEARED, SILICIFIED, SERICITIZED, MODERATELY HARD TO VERY HARD, 33-50% qtz VEINS & PERVASIVE, SHEARING @ 50-60° CA, CORE RECOVERY IS GOOD, CORE IS LOCALLY SHATTERED BUT OVER ALL NO TOO BAD, TR-1% FINELY DISSEMINATED PY. GROUND FAIR TOO GOOD
71	81	CHLORITIZED GREY CARBONATE: 33% qtz, TR-1% PYLOC.DISS., CORE RECOVERY GOOD, CORE NOT TOO BROKEN UP, GROUND CONDITIONS GOOD.  SLIGHTLY MORE CHLORITIC TOWARDS BOTTOM
81	159	TALC CHLORITE SCHIST: DARK GREEN TO GREY, SOME BANDS OF GREY CHLORITIZED CARBONATE, 20-40% qtz, TR-1% PY DISS., LOCALLY BRECIATTED AND

**SILICIFIED MODERATELY HARD, CORE  
RECOVERY IS 90% GROUND IS FAIR**

**118-119: FAULT GAUGE: VERY CHLORITE,  
VERY SOFT, 1-2% PY**

- 159            196    GREY GREEN CARBONATE 33% qtz, TR-2%  
PY LOCALLY, NARROW BANDS OF GREEN  
CARB WITH UP TO 10% CRSE PY LOCALLY  
INTERMITTENT CHLORITIC SEAMS, GROUND  
165.5-175 GRN/CARB 37% qtz 5-7%  
PY**
- 175-177 SER. POR. COMP/PYTIC CARB  
20% qtz 15-20% PY**
- 196            221    GREY CHLORITIC CARBONATE GREY WITH  
DARK GREEN CHLORITIZED SECTIONS,  
RECOVERY IS GOOD 80-90% OVER ALL,  
TR-1% PY., GROUND IS FAIR TO GOOD**

**ST ANDREW GOLDFIELDS LTD.**  
**6-11**

**SAMPLE RECORD SHEET**

<b><u>SAMPLE#</u></b>	<b><u>FROM</u></b>	<b><u>TO</u></b>	<b><u>LENGTH</u></b>	<b><u>AU OZ/TON</u></b>	<b><u>DESCRIPTION</u></b>
11577	162	165.5	3.5	.004	G R Y / G R N CARB:33% qtz; 1- 2% PY DISS
78	165.5	170.5	5	.036	" " " ;5-7% PY
79	170.5	175	4.5	.116	" " " ;" " "
11580	175	177	2	1.044	SER.POR/PY' TIC CARB;20% qtz;15- 20% CRSE PY
81	177	182	5	.074	GRY/GRN CARB:33% qtz;TR-1% PY

**ST ANDREW GOLDFIELDS LTD.**

**6 - 92 EXP. CROSS-CUT**

**PROPERTY: STOCK MINESITE: U/G**

**LOCATION: 0+07 N 5+01 W BEARING 310° HOLE NO. 6-13**

**LOGGED BY: R.J.A. ELEVATION 9160 DIP: -65 FINAL DEPTH 327**

**STARTED MAR 15/91**

**FINISHED MAR 20/91**

**CORE SIZE AQ DRILLED BY MINDECON**

---

<b>FROM</b>	<b>TO</b>	<b>DESCRIPTION</b>
0	92	GREY/GREEN CARBONATE 30-40 % qtz VEINLETS, TR-1% PY, OCCASIONAL CHLORITE BAND, LOCALLY CORE IS BROKEN UP QUITE BAD, OCCASIONAL GRY/BRN PORPHYRY BAND BETWEEN 51 AND 82', 5070 C.R. BETWEEN 0-7' AND 72' - 82'. GROUND IS FAIR TO GOOD 82-92 BECOMING VERY CHLORITIZED
92	117	TALC CHLORITE SCHIST: PEARL GREEN TO BLACK, WITH WHITE G T2 STRINGERS (20-33% qtz) TR PY, SCHISTOSITY FROM 35° TO C.A. TO CORE PARALLEL, FAULT GOUGE FROM 102- 107 W 1070 CR AVERAGE CR 5-% POOR GROUND
117	147.5	CHLORITIZED GREY CARBONATE DARK GREY TO DARK GREEN, MODERATE TO SOFT, AMOUNT OF CHLORITE VARIES FROM SPOT TO SPOT, C.R. IS GOOD TR-1% PY, 20-33% qtz VEINLETS, @30° C.A...
150	166	PYRITIC CARBONATE 1 POR. GREY, SILICIFIED (20-33% PEVVASIVE 15-20 % CRSE PY., NARRO qtz VEINS CONTAIN MANY SPECS OF V.G. TO .5 MM IN SIZE 152-156 GRN CARB; TR-1% OPY
166	275	GREY/GREEN CARBONATE 166-172: FINE GRAINED, UNIFORM MASSIVE TEXTURE, TR-1% PY 20% qtz, LIGHT GREY/GREEN IN COLOUR

---



172-275: COARSEV GRAINED, MORE  
BRECCIATED AND SILICIFIED, COLOUR  
CHANGES BETWEEN DARKER GREEN AND  
GREY, TR-2% PY LOCALLY

275

327 SHEARED GREEN CARBONATE BUFF COLOUR  
WITH SLIGHT GREEN TINGE, SOME AREAS  
HAVE A PINK HUE AND THIN DISTINCT  
PINK BANDS TO 1-3 MM IN WIDTH, TR  
PY-HARD, SHEARING AT 30° CA - 20%  
qtz VEINS, BUT SILICIFIED  
PERVASIVELY

327 EOH CORE PARTIALLY SAVED

**ST ANDREW GOLDFIELDS LTD.**  
**SAMPLE RECORD SHEET**

**HOLE NO.: 6-13**

<b><u>SAMPLE NO.</u></b>	<b><u>FROM</u></b>	<b><u>TO</u></b>	<b><u>LENGTH</u></b>	<b><u>AU OZ/TON</u></b>
11589	145	150	5	.020
11590	150	152	2	.474
91	152	156	2	.058
92	156	156	5	.408
93	161	166	5	1.120
94	166	171	5	.018

**ST ANDREW GOLDFIELDS. LTD.**

**HOLE NO.: 6-11**

**S A S GRID**

<b><u>FOOTAGE</u></b>	<b><u>NOTHING</u></b>	<b><u>EASTING</u></b>	<b><u>ELEVATION</u></b>	<b><u>DIP</u></b>	<b><u>AZIMUTH</u></b>
COLLAR	4	-504	9165	8	283
25	20	-523	9168	8	283
28	22	-525	9169	8	283
50	36	-541	9172	8	283
61	44	-550	9174	8	283
75	53	-560	9175	8	283
95	66	-575	9178	8	283
100	69	-579	9179	8	283
125	85	-597	9182	8	283
128	87	-600	9183	8	283
150	101	-616	9186	8	283
162	109	-625	9187.5	8	283

<b>175</b>	<b>118</b>	<b>-635</b>	<b>9189</b>	<b>8</b>	<b>283</b>
<b>195</b>	<b>131</b>	<b>-650</b>	<b>9192</b>	<b>8</b>	<b>283</b>
<b>200</b>	<b>134</b>	<b>-653</b>	<b>9193</b>	<b>8</b>	<b>283</b>
<b>220</b>	<b>147</b>	<b>-668</b>	<b>9196</b>	<b>8</b>	<b>283</b>

**ST ANDREW GOLDFIELDS LTD.****HOLE NO.: 6-13****S A S GRID**

---

<b>FOOTAGE</b>	<b>NORTHING</b>	<b>EASTING</b>	<b>ELEVATION</b>	<b>DIP</b>	<b>AZIMUTH</b>
<b>COLLAR</b>	<b>7</b>	<b>-501</b>	<b>9160</b>	<b>-65</b>	<b>310</b>
<b>25</b>	<b>17</b>	<b>-505</b>	<b>9137</b>	<b>-65</b>	<b>310</b>
<b>50</b>	<b>27</b>	<b>-509</b>	<b>9115</b>	<b>-65</b>	<b>310</b>
<b>75</b>	<b>36</b>	<b>-513</b>	<b>9092</b>	<b>-65</b>	<b>310</b>
<b>100</b>	<b>46</b>	<b>-517</b>	<b>9069</b>	<b>-65</b>	<b>310</b>
<b>125</b>	<b>56</b>	<b>-521</b>	<b>9047</b>	<b>-65</b>	<b>310</b>
<hr/>					
<b>149</b>	<b>65</b>	<b>-525</b>	<b>9025</b>	<b>-65</b>	<b>310</b>
<b>150</b>	<b>66</b>	<b>-525</b>	<b>9025</b>	<b>-65</b>	<b>310</b>
<b>175</b>	<b>76</b>	<b>-529</b>	<b>9001</b>	<b>-65</b>	<b>310</b>
<b>200</b>	<b>85</b>	<b>-533</b>	<b>8979</b>	<b>-65</b>	<b>310</b>
<b>225</b>	<b>95</b>	<b>-537</b>	<b>8956</b>	<b>-65</b>	<b>310</b>
<hr/>					
<b>250</b>	<b>105</b>	<b>-541</b>	<b>8933</b>	<b>-65</b>	<b>310</b>
<b>275</b>	<b>115</b>	<b>-545</b>	<b>8911</b>	<b>-65</b>	<b>310</b>
<b>300</b>	<b>125</b>	<b>-548</b>	<b>8888</b>	<b>-65</b>	<b>310</b>
<b>307</b>	<b>127</b>	<b>-550</b>	<b>8882</b>	<b>-65</b>	<b>310</b>
<b>325</b>	<b>134</b>	<b>-552</b>	<b>8865</b>	<b>-65</b>	<b>310</b>
<b>327</b>	<b>135</b>	<b>-552</b>	<b>8863</b>	<b>-65</b>	<b>310</b>

---

ST ANDREW GOLDFIELDS LTD.

LOCATION: 8+87 W; 2+71 N BEARING: 180° HOLE NO.: 7-01

LOGGED BY: O.Z ELEVATION: 9105 DIP: 0°

FINAL DEPTH: 317.0' STARTED: OCT 30/91 FINISHED: NOV 12/91

CORE SIZE: AQ DRILLED BY MINDECON

FROM	TO	DESCRIPTION
0.0	22.0	GREY/GREEN CARBONATE: GOOD GROUND, 33% qtz VLTS
22.0	67.0	GREY CARBONATE: MORE CHL'D, 10-20% qtz VLTS. GOOD GROUND, MAY BE BEGINNING OF MINOR BREAK AREA?
67.0	68.0	TALC CHLORITE SCHIST: MINOR BREAK?? BLACK SOFT, SMALL GOUGE SEAMS
68.0	83.0	LOST CORE: MINOR BREAK??
83.0	94.0	BRECCIATED QUARTZ/GREY PORPHYRY: (IN MINOR BREAK?) GOOD TO FAIR GROUND; TR PY.
		91-93.0: LOST CORE
94.0	121.0	GREEN CARBONATE: GOOD GROUND; 10-15% qtz VLTS, TR. PY
		97.0-101.0: SHATTERED CORE;
121.0	142.5	BRECCIATED QUARTZ/BROWN PORPHYRY VEINS: WITH INTERVALS OF SLIGHTLY SER'D GREY/GRN CARBONATE, TR-1% PY, GOOD GROUND
142.5	188.0	SER'TIC ANDESITE: FINE PYR; 1-2% ASSOC'D WITH qtz VLTS- GOOD GROUND
188.0	215.0	GRY / GRN CARB: INTERMITTENT GOUGE SEAMS,

**ST ANDREW GOLDFIELDS LTD.**

**POOR GRND, 80% CORE  
RECOVERY, BEGINNING OF  
FAULT ZONE?**

**215.0      265.0**

**T.C.S.: SOUTH FAULT/CHL'D  
SHR. ZONE POOR GROUND,  
66% CORE RECOVERY**

**265.0      317.0**

**GREY/GRN CARB:      GOOD  
GROUND**

**298.0-315.0: INTERMITTENT  
BRN POR. VLTS. 1-2% PY**

**ST ANDREW GOLDFIELDS LTD.**

**SAMPLE RECORD SHEET**

<b>SAMPLE#</b>	<b>FROM</b>	<b>TO</b>	<b>LENGTH</b>	<b>AU OZ/TON</b>	<b>DESCRIPTIONS</b>
12918	138.5	142.5	.010	.010	BRN POR.: 66% qtz. TR PY
9	142.5	150	7.5	.008	SER ANDS: 5-20% " "; 1-2% PY
12920	150	155	7.5	.012	" " " " " " "
1	155	160	5	.006	" " " " " " "
2	160	165	5	.004	" " " " " " "
3	165	170	5	.006	" " " " " " "
4	170	175	5	.010	" " " " " " "
12925	175	180	5	.028	" " " " " " "
6	180	185	5	.026	" " " " " " "
7	185	188	3	.012	" " " " " " "
12928	188	193	5	.014	GRY/GRN CARB: 33% qtz; TR PY

**ST ANDREW GOLDFIELDS LTD.**

LOCATION: 8+57 W; 3+'00 N      BEARING: SOUTH      HOLE NO.: 7-02

LOGGED BY: R. ALLARD      ELEVATION 9105'      DIP:-30°

FINAL DEPTH:330.0'      STARTED: NOV 15/91      FINISHED: NOV 27/91

CORE SIZE:      AQ DRILLED BY MINDECON

---

<u>FROM</u>	<u>TO</u>	<u>DESCRIPTION</u>
0.0	108.0	GREY/GR.      CARB:      GOOD GROUND 25% qtz; TR-1% PY
108.0	160.0	MINOR BREAK (FAULT ZONE) GAUGE SEAMS MOD. BROKEN- UP.  50-60%-CORE RECOVERY
160.0	213.0	GREY/GR.      CARB: 20% qtz VLTS; TR. PY GOOD GROUND
213.0	260.0	SERICITIC ANDS/ZONE: 10- 20% qtz VLTS; 1-4% DISS'D PY; GOOD GROUND
260.0	320.0	GREY/GRN      CARB:      GOOD GROUND 20-25% qtz; TR PYRITE
320.0	330.0	FAULT      ZONE:      POSSIBLY (SOUTH BREAK)? CHL SCHIST



ST ANDREW GOLDFIELDS LTD.

SAMPLE RECORD SHEET 7-02

SAMPLE#	FROM	TO	LENGTH	AU OZ/TON	DESCRIPTIONS
12929	210	213	3	.004	GREY/GR CARB: 10% qtz; TR PYRITE
12930	213	218	5	.006	SER'TIC ANDS ZONE: 10-20% qtz; TR-1% PY
1	218	222	4	.010	" " " " " " "
2	222	226	4	.022	" " " " "TR-2% PY
3	226	230	4	.004	" " " " " " "
4	230	235	5	.030	" " " " "1-3% "
12935	235	240	5	.032	" " " " " 1-4% "
6	240	245	5	.004	" " " " " 1-3% "
7	245	250	5	.012	" " " " " "TR- 1% " "
8	250	255	5	.004	" " " " " " " "
9	255	260	5	.022	" " " " " " " "
12940	260	265	5	.006	GRY/GRN CARB: 20% qtz; TR PYRITE

END

**ST ANDREW GOLDFIELDS LTD.**

LOCATION: 3+01 N; 8+60 W                      BEARING: 200°    HOLE NO.: 7-03

LOGGED BY: R. ALLARD                              ELEVATION 9104        DIP:-25°

FINAL DEPTH: 378.0' STARTED NOV. 27/91                      FINISHED: DEC 6/91

CORE SIZE:              AQ DRILLED BY MINDECON

<u>FROM</u>	<u>TO</u>	<u>DESCRIPTION</u>
0.0	118.0	GREY/GRN CARB: 15-20% qtz; TR-1% PYRITE. GOOD GROUND
118.0	155.0	FAULT ZONE: MINOR BREAK; 10-20% qtz VLTS; POOR TO BAD GROUND: 40% CORE RECOVERY
155.0	187.0	SHEARED & CHL'D GREY CARB: GOOD GROUND
187.0	190.5	BROWN POR. VEIN: TR-1% PY LOC.
190.5	201.5	GRY/GRN CARB.: GOOD GROUND
201.5	230.0	SERICITIC/ANDESITES: SILICIFIED-GOOD GROUND 1-3% PY. LOC 204.5-207.0:BRN POR. VEIN
230.0	258.0	BLEACHED AND LEU'TIC; GOOD GROUND; 10-15% qtz; TR PY
258.0	319.0	SERICITIC AND: 10-20% qtz; TR-3% DISS'D PY. GOOD GROUND;
		307.0'-316.0: SE. ZONE
319.0	378.0	GREY/GRN CARB: 20-33% qtz; TR-2% PY. GOOD GROUND;
		END OF HOLE

ST ANDREW GOLDFIELDS LTD.

SAMPLE RECORD SHEET 7-03

SAMPLE#	FROM	TO	LENGTH	AU OZ/TON	DESCRIPTIONS
12941	198	201.5	3.5	.014	GRY/GRN CARB: 10% qtz; TR PYRITE
2	201.5	204.5	3	.006	SERITIC/SIL'D AND:" " ;TR-1% PYRITE
3	204.5	207	2.5	.010	BRN POR. VEIN: 66% qtz; " " "
4	207	212	5	.014	SER'TIC/SIL'D AND: 10-15% qtz;" " "
12945	212	217	5	.016	" " " " "33";TR-3% " "
6	217	221	4	.004	" " " " " " "
7	221	226	5	.002	" " " "33-40% qtz " " "
8	226	230	4	.006	" " " "20% ";TR-1% qtz " "
9	230	235	5	.024	BLC'D ANDS: 10% "; TR. PYRITE
12950	258	263	5	.004	SER'TIC ANDS: 10% qtz; TR-1% PY
1	263	268	5	.002	" " " " " "
2	268	273	5	.006	" " " " " "
3	273	278	5	.010	" " " " " "
4	278	283	5	.004	" " " " " "
12955	283	288	5	.002	" " " " " "
6	288	293	5	.006	" " " " " "
7	293	298	5	.004	" " " " " "

ST ANDREW GOLDFIELDS LTD.

12958	298	303	5	.002	" " " " "TR-2% PY
12959	303	307	4	.002	SER'TIC ANDS: 10-15% qtz; TR- 2% PYRITE
12960	307	312	5	.010	SER. ZONE: " TR-3% "
1	312	316	4	.016	" " " " " "
2	316	319	3	.002	SER'TIC ANDS: 40% qtz; TR-2% PY
12963	319	323	4	.008	GRY/GRN CARB: 20-33% qtz; TR. PY

END

**ST ANDREW GOLDFIELDS LTD.**

LOCATION: 1+52 N ; 7+06 W      BEARING: A<sup>2</sup> (152<sup>0</sup>)      HOLE NO.: 7-04  
 LOGGED BY: R. ALLARD      ELEVATION 9068      DIP: 0<sup>0</sup>  
 FINAL DEPTH: 250.0'      STARTED: DEC. 11/91      FINISHED: DEC 18/91  
 CORE SIZE:      AQ: DRILLED BY MINDECON

FROM	TO	DESCRIPTION
0.0	30.0	GREY/GRN      CARB:      20% qtz; TR-1% PY LOC. GOOD GROUND; CORE RECOVERY
30.0	155.5'	FAULT ZONE: (MINOR BREAK) GOUGE;      40-50%      CORE RECOVERY;      70.0-109.0': SERICITIC ANDESITES: 10% qtz; TR-2% PY LOC. 50% C.R.
155.5	240.0	GREY / GRN      CARB : GREYISH/GRN; MED. GR, 10- 25% qtz; TR. PY - CORE MODERATELY BROKEN-UP - FAIR TO GOOD; GRND COND.  195.0-201.5: BROWNISH/GRY POR. TR.PY  201.5-230.0': 40-66% qtz; TR-1% PY
240.0	250.0'	FAULT      ZONE      POSSIBLY (SOUTH      BREAK)?      GOUGY, LOST CORE, BROKEN-UP, 50% COR  END OF HOLE

ST ANDREW GOLDFIELDS LTD.

SAMPLE RECORD SHEET 7-04

SAMPLE#	FROM	TO	LENGTH	C.R.	AU OZ/TON	DESCRIPTIONS
12964	70.0	82.0	12	40%	.014	SERITICAND. 10-20% qtz; TR-1% PY
5	82.0	90.0	12	80%	.018	" " " " "
6	90.0	95.0	5	100%	.012	" " " " ";TR-2% PY
12967	95.0	109.0	14	30%	.002	" " " " "
END						

**ST ANDREW GOLDFIELDS LTD.**

LOCATION: 1+57 N; 7+06 W      BEARING: A<sup>2</sup> (152<sup>0</sup>)      HOLE NO.: 7-05

LOGGED BY: R. ALLARD      ELEVATION:      DIP: -50<sup>0</sup>

FINAL DEPTH: 72.0'      STARTED: DECEMBER 18/91      FINISHED: DECEMBER 18/91

CORE SIZE:      AQ DRILLED BY MINDECON

---

<u>FROM</u>	<u>TO</u>	<u>DESCRIPTION</u>
0.0	23.0	PY. CARB/POR: 1-8% PY LOC./ 20% qtz GOOD GROUND
23.0	60.0'	GRY/GRN CARB: 10-2-% qtz; TR-1% PY GOOD GROUND
60.0	72.0'	FAULT ZONE: (MINOR BREAK) GOUGE 20% qtz; 50% COR
		END OF HOLE

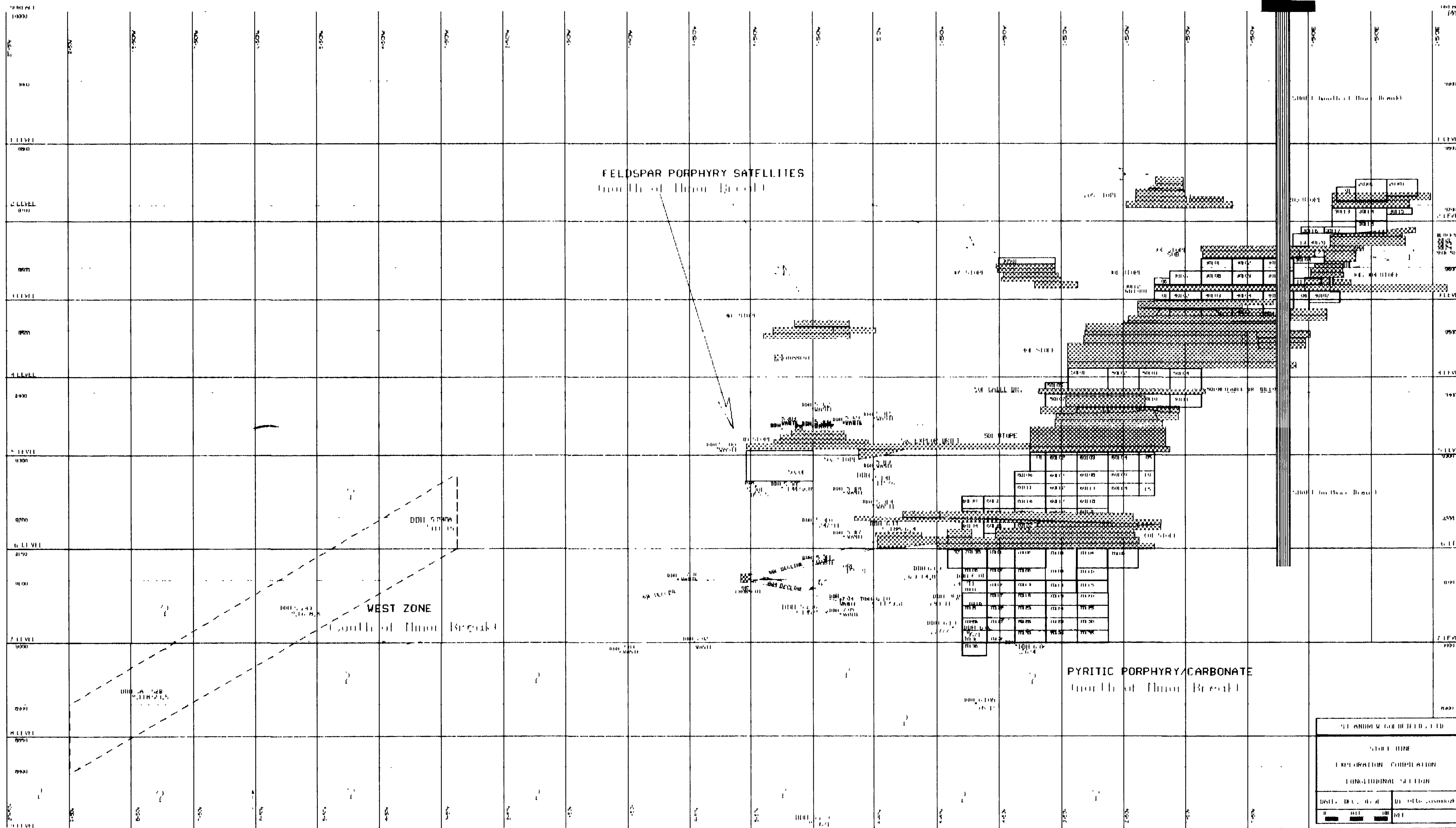
ST ANDREW GOLDFIELDS LTD.

SAMPLE RECORD SHEET 7-05

SAMPLE#	FROM	TO	LENGTH	AU OZ/TON	DESCRIPTIONS
12968	0.0	5	5	.010	PY CARB/POR: 10% qtz PY
9	5	10	5	.002	" " " " " :1-6% "
12970	10	15	5	.006	" " " " "
1	15	20	5	.008	" " " " " :1-3% "
2	20	23	3	.006	" " " " " :1-2% "
12973	23	27	4	.002	GRY/GRN CARB: 20% qtz ; TR-1% PY

END





42A105E0004 0M61-088 8100K

ST. ANDREW GOLDFIELD LTD.

SECTION

EXPLORATION COMPILATION

LONGITUDINAL SECTION

DATE: DEC. 05. 01	BY: GUY. LINDSEY
SCALE: 1:1000	SHEET: 101

3500A

TPI

15-01-92

GEOLOGICAL CONTROL FOR STOPPING

31-12-91

6020

15-12-91

30-11-91

LP

6016

3400 f

\_\_\_\_\_



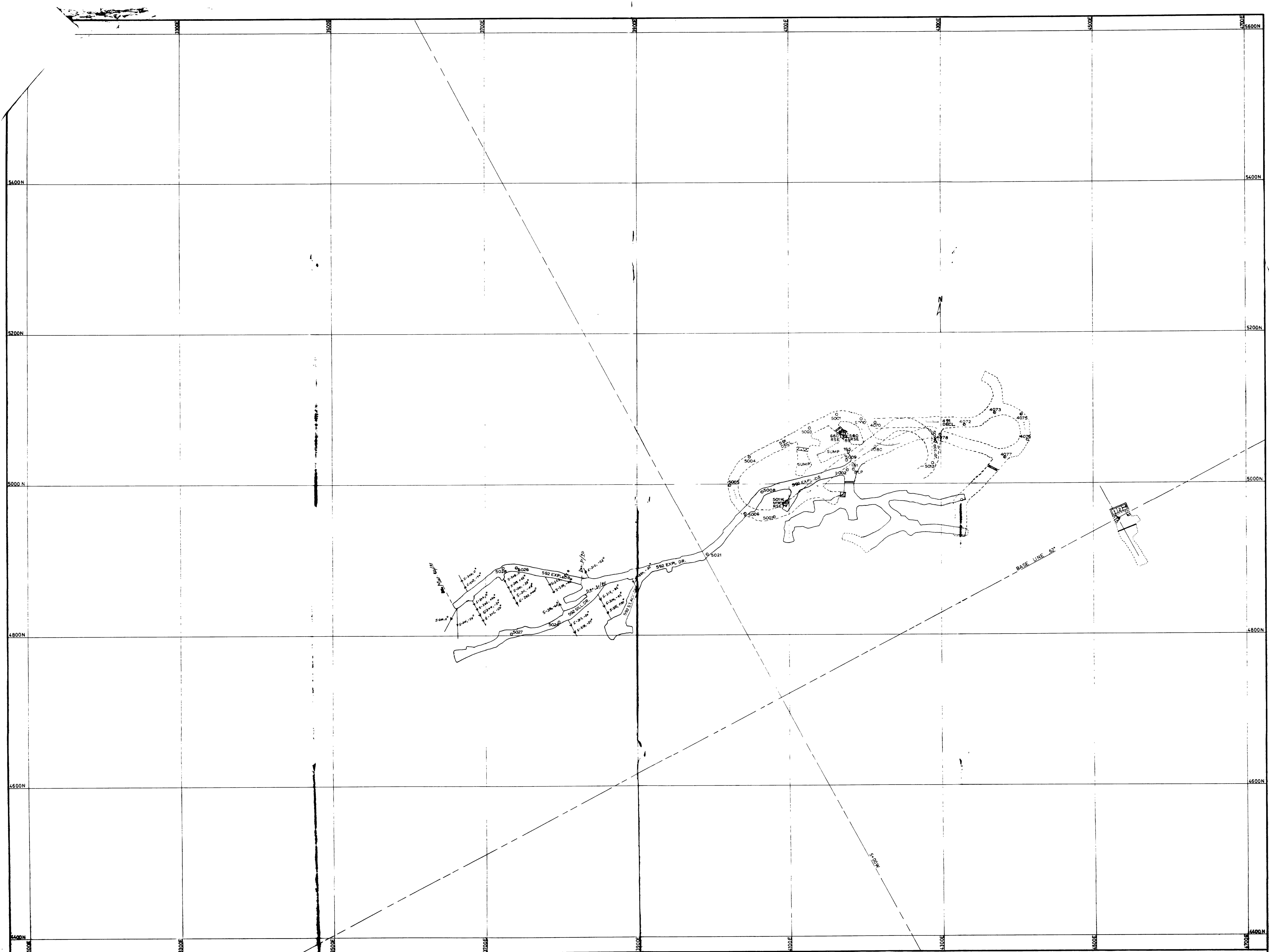
210

320 E

**ST-ANDREW GOLDFIELDS LTD.**

GOLD EXPLORATION X CUT

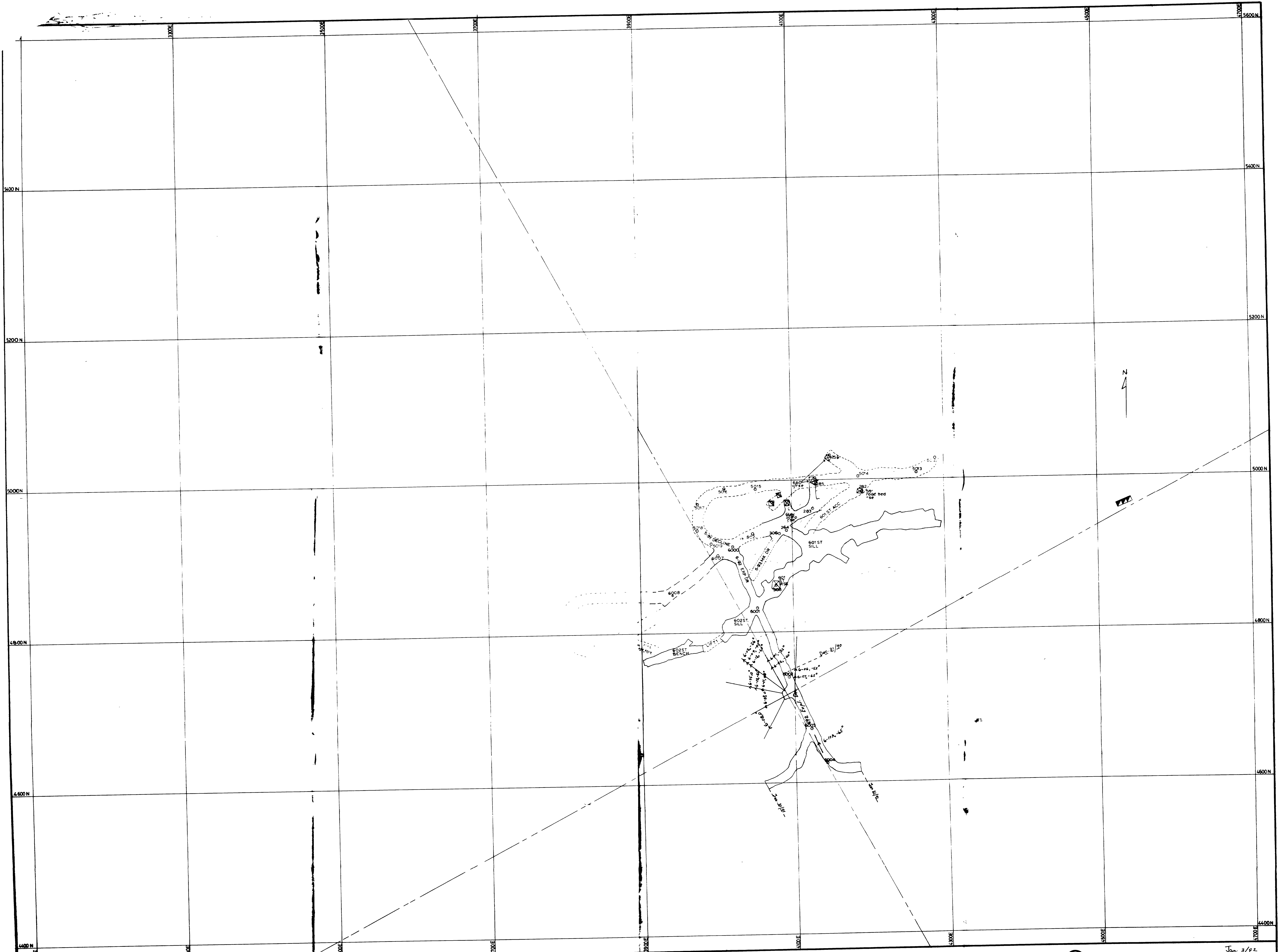
Date:	By:
Scale:	Ref:



ST ANDREW GOLDFIELDS LTD

⑤ LEVEL 40 *Jan. 3/92*  
*592 Explor. Drift* *83.*





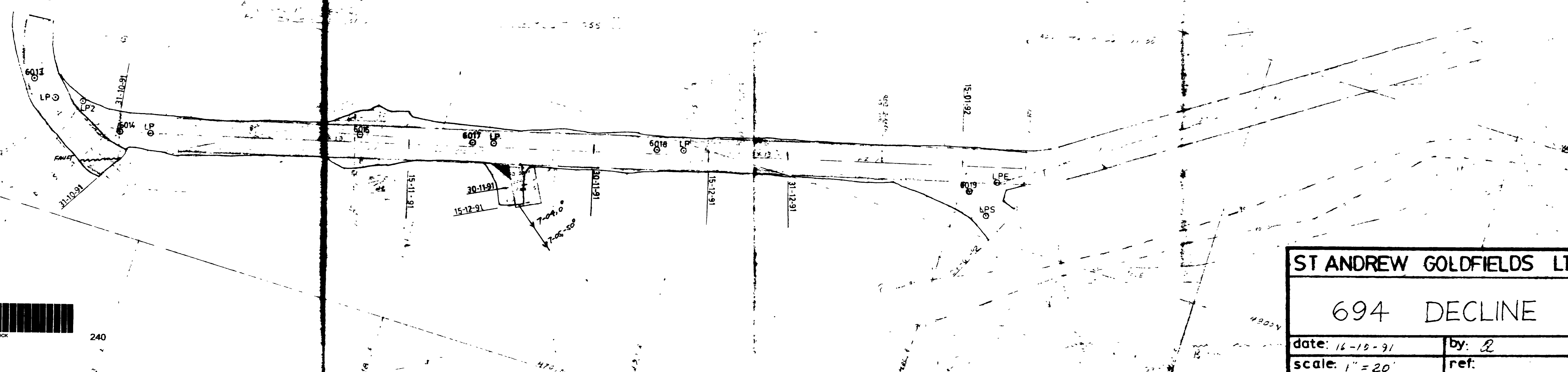
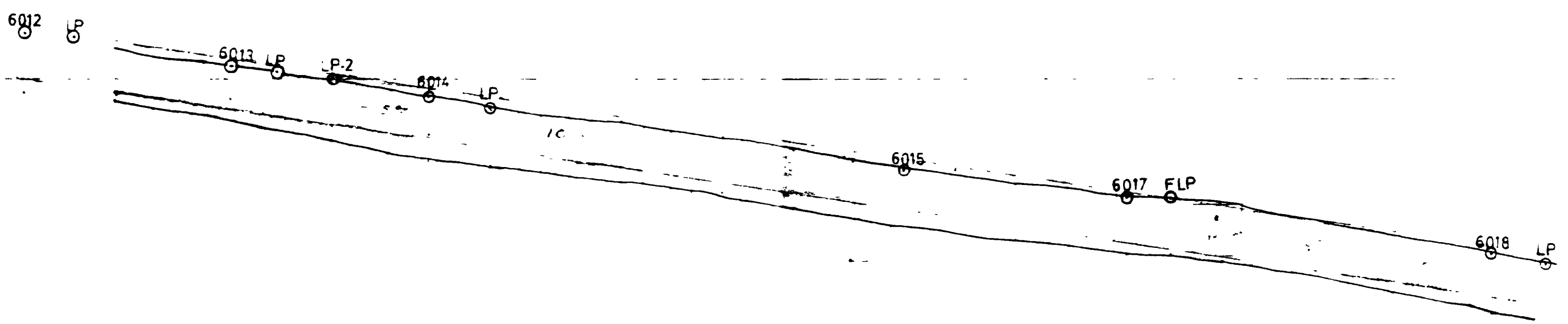
ST ANDREW GOLDFIELDS LTD

⑥ LEVEL 40  
692 Explor Drift

Jan 3/92  
0.3  
1"=40'



APPROVED BY	
MINING MANAGER	
GENERAL SUPER	
PLANT SUPER	
GEOLOGY	57
ENGINEERING	6/16/91
U/G SUPER	
VENTILATION	



**ST ANDREW GOLDFIELDS LTD.**

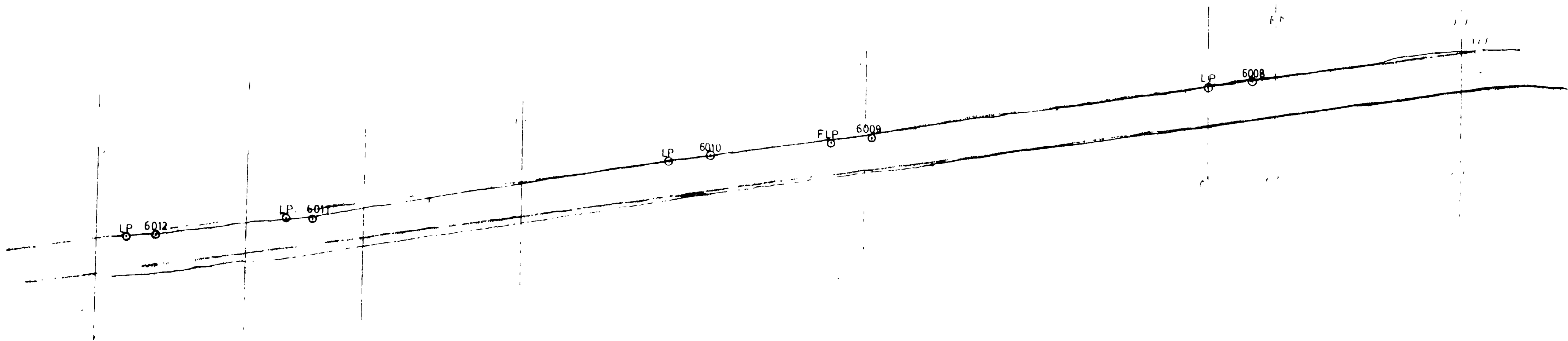
**694 DECLINE**

date: 16-10-91 by: *Q*

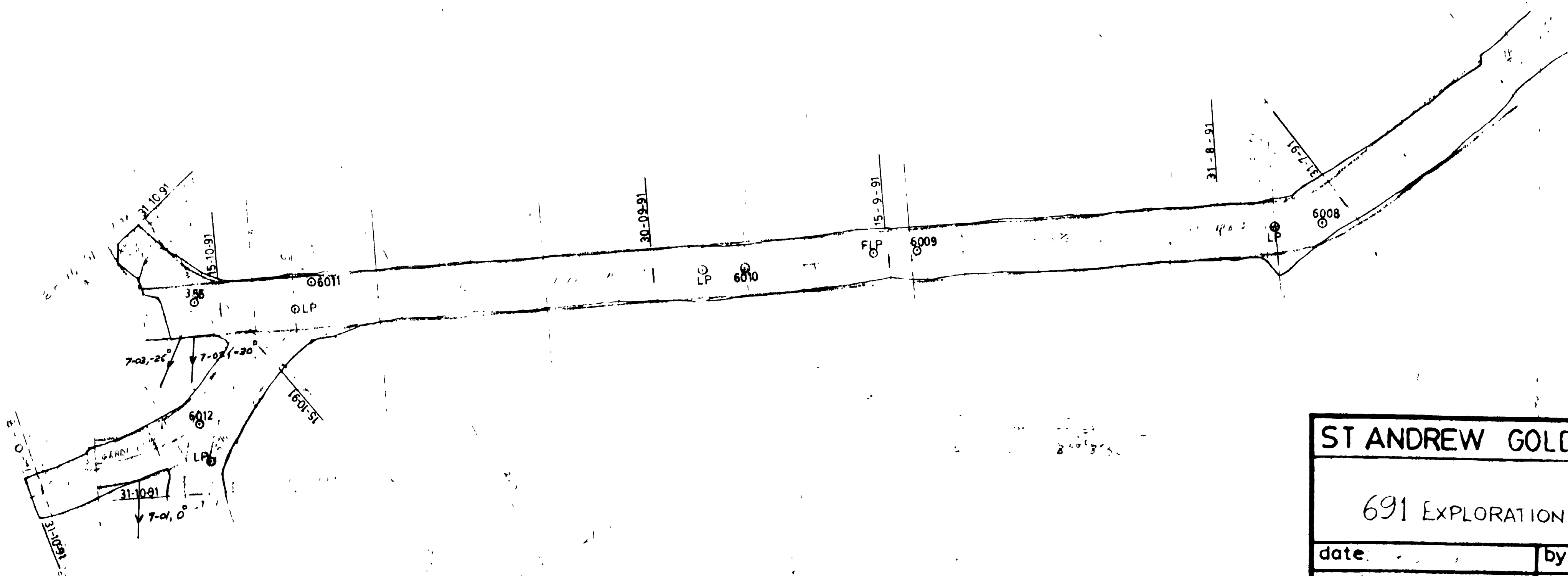
scale: 1" = 20' ref:



1100



APPROVED BY:	
MINING MANAGER	ps
GENERAL SUPER	
PLANT SUPER	
GEOLOGY	
ENGINEERING	1/10/91
L/Q SUPER	
VENTILATION	



ST ANDREW GOLDFIELDS LTD

691 EXPLORATION DECLINE

date:	by:
scale:	ref:



250