



DIAMOND DRILLING

010

TOWNSHIP: Macklem

REPORT No.: 27

WORK PERFORMED BY: Pamour Porcupine Mines Ltd.

<u>CLAIM No.</u>	<u>HOLE No.</u>	<u>FOOTAGE</u>	<u>DATE</u>	<u>NOTE</u>
P 546624	83-1	426	Feb/83	(1)

NOTES: (1) #342-83

565425

565415

18593

565414

565407

545394

545393

545392

545391

512817

565424

565416

565413

565408

545398

545397

545396

545395

512822

5128

565423

565417

565412

565409

565382

565359

565358

565355

512827

5128

565422

565418

565411

565410

565361

565360

565357

565356

512830

5128

**NIGHT**

565421

565419

555233

532104

532106

532109

532110

18374

183

565420

546626

546619

12578

12580

532107

532108

532111

18376

18377

546627

546625

546620

12579

12583

55056

53644

371157

371156

HR. I  
GOLD ISLAND  
546624  
ANNIVERSARY ISLAND

12509

BALD ISLAND

546621

546622

12579

PENINSULA

567511

567512

567513

567514

567515

PARCEL "C"

LD. 931

PARCEL "E"

LD. 3244

PARCEL "D"

LD. 3244

530695

530696

530697

632918

550684

53067

530700

530699

530698

632919

530683

53067

530701

530702

530703

632920

530682

53067

632921

530681

53068

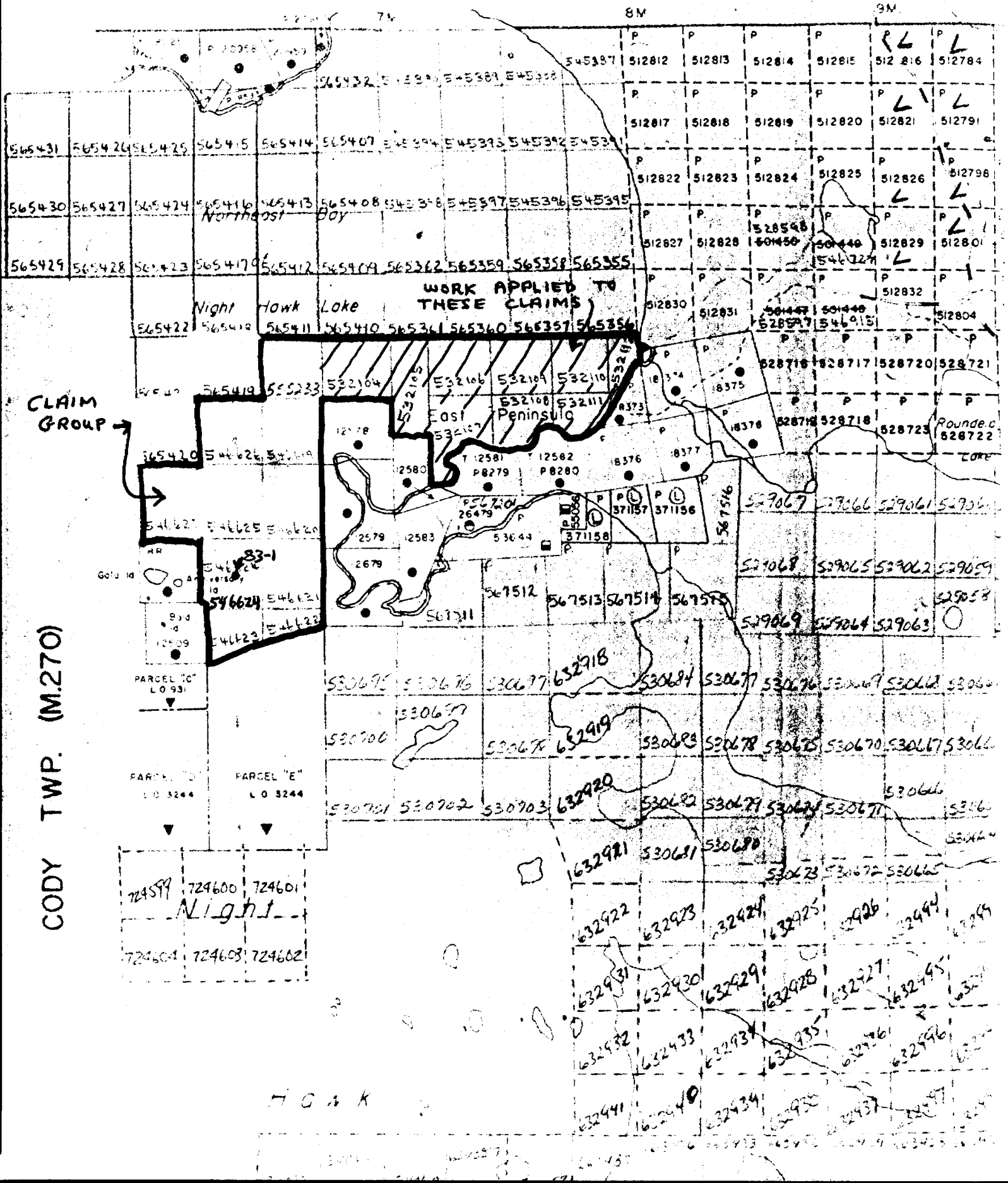
724599

724600

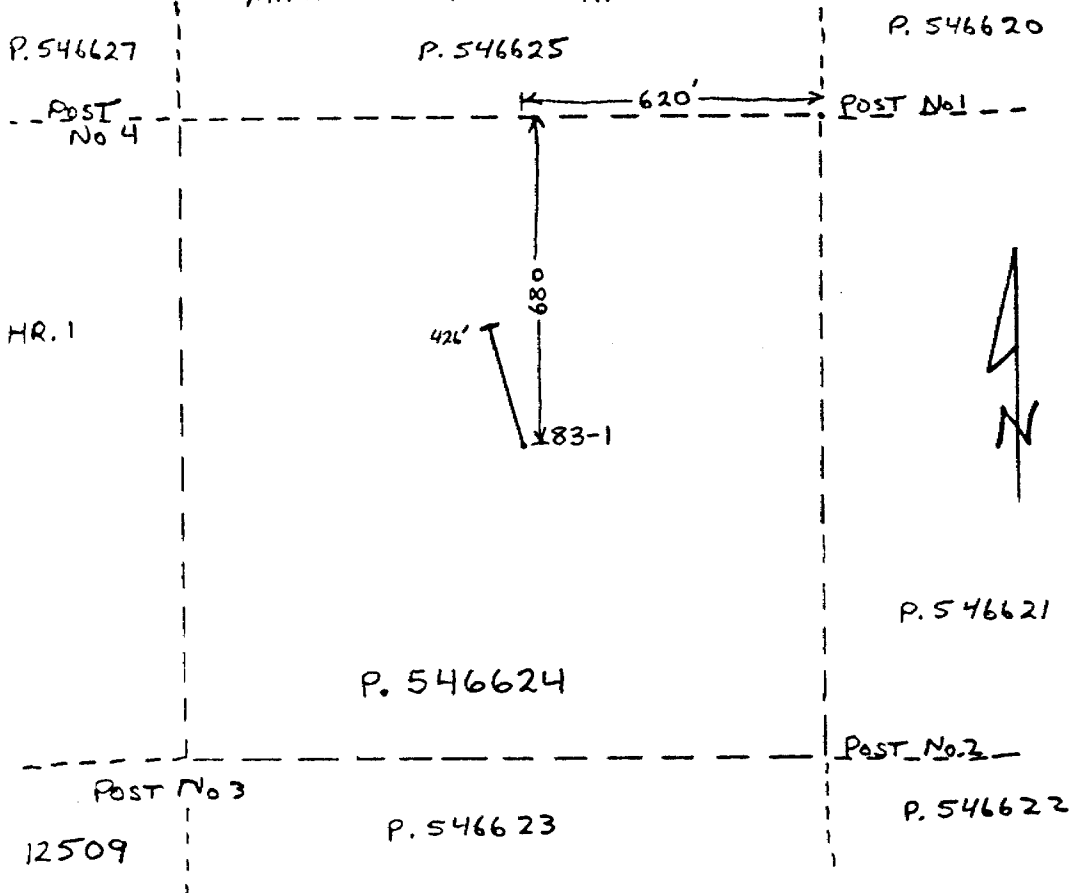
724601

*Macklem  
1/10/97  
c-3997*





NORTHEAST BAY OF NIGHTHAWK LAKE  
MACKLEM TOWNSHIP



SCALE 1 INCH = 400 FEET  
LOCATION MAP FOR PAM-83-1

Kian Hansen  
Nov 15/83

LOCATION \_\_\_\_\_

PAMOUR PORCUPINE MINES LTD.

HOLE NO. PAM-NH-83-1

N. \_\_\_\_\_ FOOTAGE/ANG. \_\_\_\_\_

EXPLORATION DEPT

SHEET 1 OF 12

E. ICE DIP -50°N @ COLLAR

LOCATED 620 FEET WEST AND 680 FEET SOUTH  
OF CLAIM POST NO.1 OF P.546624

LOGGED BY: KIRAN A. JENSEN

ELEV. \_\_\_\_\_ DIP -52.5° @ 150'

DATE FEB. 15, 16, 1983

AZ. N 15° W DIP -52.5° @ 300'

HOPSON GRID 3+05 SOUTH ON LINE 6+00 W.

DRILLED: FEB. 13 TO 15, 1983

FROM	TO	END OF HOLE: 426 FEET. SIZE: BQ	DESCRIPTION	FROM	TO	SAMPLE NO.	LENGTH	AU C.P.T.	NO. VEINS / SAMPLE
0	3		CASING 3' ABOVE ICE LEVEL.						
3	80		CASING : 1/2' VERTICAL THICKNESS OF ICE, 14' VERTICAL DEPTH OF WATER OVERBURDEN CONSISTS OF VARVED CLAYS, GRAVELS, TILLS. LAST SECTION OF CASING PENETRATED GRANITE AND MAFIC VOLCANIC BOULDERS						
80'	81'3"		MEDIUM TO DARK BROWN, WEATHERED, SLIGHTLY CARBONATED CHLORITIC SCHIST. SOFT, CRUMBLY, LITTLE REACTION TO HCL. 3" GROUND	80	85	10701	5'		7
81'3"	82'		DARK BLACKISH GREEN, CHLORITIC SCHIST, CARBONATED, FINE PHENOCRYSTS OF CARBONATE REPLACEMENT OR VESICLES FILLED WITH CARBONATE, FINE GRAINED, MINOR FUCHSITE, CARBONATE - QUARTZ VEINING OR MASSES (1/8") AVERAGE 1-2% PYRITE						
82'	83'4"		MEDIUM TO DARK BROWN, WEATHERED, CARBONATED, FINE GRAINED, CHLORITIC SCHIST, OCCASIONAL FUCHSITE. 4" GROUND						
83'4"	87'3"		DARK BLACKISH GREEN, FINE GRAINED, CARBONATED CHLORITIC SCHIST, NUMEROUS QUARTZ - CARBONATE STRINGERS - CARBONATE (WHITE) ON OUTSIDE OF VEIN WITH QUARTZ OCCUPYING THE CENTRE, MINOR FUCHITE ON EDGES OF STRINGERS AND VEINS, APPROXIMATELY 5% VERY FINE PYRITE 84'7" QUARTZ - CARBONATE VEIN (1/4") C.A. 28°	85	90	10702	5'		5

*[Handwritten signature]*

LOCATION \_\_\_\_\_

EXPLORATION DEPT

N. \_\_\_\_\_ FOOTAGE/ANG. \_\_\_\_\_

SHEET 2 OF 12

E. \_\_\_\_\_ DIP -50° N @ COLLAR

LOGGED BY: KIAN A. JENSEN

ELEV. ICE DIP -52.5° @ 150'

DATE FEB. 15-16, 1983

AZ. N15°W DIP -52.5° @ 300'

FROM	TO	DESCRIPTION	FROM	TO	SAMPLE NO.	LENGTH	AU O.P.T.	NO. VEINS / SAMPLE
87'3"	88'1"	BROWN WEATHERED CARBONATED CHLORITIC SCHIST.						
88'1"	90'6"	DARK BLACKISH GREEN CHLORITIC SCHIST (AS ABOVE)						
		FINE PYRITE ~2-5% IN MAFIC ROCK, VERY LITTLE <1% PYRITE IN THE						
		NUMEROUS MASSES AND STRINGERS OF CARBONATE AND QUARTZ.						
		90' SCHISTOSITY C.A. ~25°						
90'6"	94'2"	MEDIUM BRIGHT GREEN TO EMERALD GREEN, FINE GRAINED, SICICEOUS, CARBONATED,	90	95	10703	5'		7
		CARBONATE REPLACEMENT OF PHENOCRYSTS OR FILLING OF VESICLES,						
		ABUNDANT FUCHSITE >10%, AVERAGE <1% PYRITE. <u>BRIGHT GREEN CARBONATE</u>						
		90'6" - 90'10" GRADUAL TRANSITION TO GREEN CARBONATE						
		91'2" - 91'4" BROWN CARBONATE						
		91'9" - 93'7" QUARTZ CARBONATE SHEARED 1/4" DISPLACEMENTS						
		10" GROUND CORE						
94'2"	95'2"	GREEN CARBONATE, UNIFORM, FINE GRAINED <1% PYRITE						
		94'6" CARBONATE - QUARTZ VEIN (1/4") C.A. 30°						
		94'11" - 95'2" BROWN CARBONATE WEATHERING						
95'2"	96'2"	GREEN CARBONATE, PORPHYRITIC, PHENOCRYSTS REPLACED BY CARBONATE OR	95	100	10704	5'		9
		FILLING OF VESICLES, <1% PYRITE						

*KAJ*

LOCATION \_\_\_\_\_

PAMOUR PORCUPINE MINES LTD.

HOLE NO. PAM-NH-83-1

N. \_\_\_\_\_

FOOTAGE/ANG. \_\_\_\_\_

EXPLORATION DEPT

SHEET 3 OF 12

E. ICE

DIP -50° N @ COLLAR

LOGGED BY: KIAN A. JENSEN

ELEV. \_\_\_\_\_

DIP -52.5° @ 150'

DATE FEB. 15, 16, 1983

AZ. N15°W

DIP -52.5° @ 300'

FROM	TO	DESCRIPTION	FROM	TO	SAMPLE NO.	LENGTH	AU O.P.T.	NO. VEINS / SAMPLE
96'2"	117'4"	APPLE GREEN CARBONATE, MASSIVE, UNIFORM, FINE GRAINED, LITTLE VEINING	100	105	10705	5'		4
		MINOR FUCHSITE, <1% PYRITE, MASSES AND FINE STRINGERS OF CARBONATE.	105	110	10706	5'		30
			110	115	10707	5'		24
		99'3" - 99'8" - BROWN CARBONATE WEATHERING	115	120	10708	5'		15
		101' - 102'8" - BROWN CARBONATE WEATHERING 2" GROUND CORE						
		101' CARBONATE-QUARTZ VEINS, VEIN C.A. = 70° CUTS AND DISPLACES						
		VEIN C.A. = 40°						
		105'6" - 106'9" - 9 CARBONATE-QUARTZ VEINS C.A. = 60° TO 85°						
		107' - 107'3" - BROWN CARBONATE WEATHERING						
		107'4" - 107'8" - 3 CARBONATE-QUARTZ VEINS C.A. 60°						
		109'6" - 111' - 8 CARBONATE-QUARTZ VEINS C.A. 70°, 60°, 50°, (ONLY 1 VEIN						
		at 70° - 110') 50° VEINS SHEARED AND MINOR DISPLACEMENT.						
		111'5" - 111'8" - BROWN CARBONATE WEATHERING						
		112'6" - 2 GENERATIONS OF CARBONATE-QUARTZ VEINS C.A. 68° CUTS						
		C.A. 50°						
		114' - 116' FINE GRAINED PORPHYRITIC OF INCREASE IN CARBONATIZATION.						
117'	124'	PORPHYRITIC GREEN CARBONATE, CARBONATE REPLACEMENT OF PHENOCRYSTS OR	120	125	10709	5'		7
		FILLING OF VESICLES (1/8"), FINE TO MEDIUM GRAINED. MINOR DEFORMED						
		AREAS - SWIRL LIKE FOLIATION, INCREASING AMOUNT OF CARBONATIZATION.						

*[Handwritten signature]*

LOCATION \_\_\_\_\_

PAMOUR PORCUPINE MINES LTD.

HOLE NO. PAM-NH-83-1

N. \_\_\_\_\_

FOOTAGE/ANG. \_\_\_\_\_

EXPLORATION DEPT

SHEET 4 OF 12

E. ICE

DIP -50' N @ COLLAR

LOGGED BY: KIAN A. JENSEN

ELEV. \_\_\_\_\_

DIP -52.5° @ 150'

DATE FEB. 15, 16, 1983

AZ. N15°W

DIP -52.5° @ 300'

FROM	TO	DESCRIPTION	FROM	TO	SAMPLE NO.	LENGTH	AU O.P.T.	No. VEINS / SAMPLE
		CARBONATE - QUARTZ PATCHES, STRINGERS AND VEINS ~ 5-10%, FUCHSITE ~ 10%						
		2-3% FINE PYRITE, MINOR <0.5% PYRRHOTITE, MOTTLED						
		118'7" - 119'5" BROWN PATCHY CARBONATE IN PLACES 3% FINE PYRITE.						
124'	125'	BROWN CARBONATE, WEATHERED, MINOR FUCHSITE 2" GROUND CORE						
125'	125'11"	APPLE GREEN CARBONATE (AS ABOVE)	125	130	10710	5'		7
125'11"	127'	GREEN CARBONATE, FINE GRAINED, PORPHYRITIC, MOTTLED, GRADUAL COLOUR						
		CHANGE TO APPLE GREEN CARBONATE, 3-5% FUCHSITE, 1-2% PYRITE, 3" GROUND.						
		127'6" CARBONATE-QUARTZ VEIN C.A. = 75°						
		127'4" 3% FINE PYRITE ASSOCIATED WITH 5%-10% FUCHSITE						
127'	130'4"	APPLE GREEN CARBONATE (AS ABOVE) ~5% FUCHSITE						
130'4"	130'7"	BROWN CARBONATE (AS ABOVE) 1" GROUND CORE	130	135	10711	5'		7
130'7"	134'6"	GREEN CARBONATE, PORPHYRITIC, MOTTLED, 15% FUCHSITE, 2-3% PYRITE						
		133'8" 2" GROUND CORE						
134'6"	135'6"	CARBONATED AND SILICEOUS GREEN CARBONATED, FINE GRAINED MAFIC VOLCANICS						
		(CHLORITIC META-BASALT) 10% FUCHSITE, 3% FINE PYRITE,						
135'6"	135'11"	BROWN CARBONATE	135	138	10712	3'		5
135'	136'4"	CARBONATED AND SILICEOUS GREEN CARBONATED, FINE GRAINED MAFIC VOLCANICS (AS ABOVE)						
		10-15% FUCHSITE, 2% PYRITE.						

*KAJ*



LOCATION \_\_\_\_\_

PAMOUR PORCUPINE MINES LTD.

HOLE NO. PAM-NH-83-1

N. \_\_\_\_\_

FOOTAGE/ANG. \_\_\_\_\_

EXPLORATION DEPT

SHEET 5 OF 12

E. ICE

DIP -50° N @ COLLAR

LOGGED BY: KIAN A. JENSEN

ELEV. \_\_\_\_\_

DIP -52.5° @ 150'

DATE FEB. 15, 16, 1983

AZ. N 15° W

DIP -52.5° @ 300'

FROM	TO	DESCRIPTION	FROM	TO	SAMPLE NO.	LENGTH	AU O.P.T.	NO. VEINS / SAMPLE
136'4"	137'5"	GREEN CARBONATE (AS ABOVE) <1% PYRITE, 5-10% FUCHSITE						
137'5"	156'11"	BROWN CARBONATE, SMALL PATCHES OF GREEN CARBONATE, MINOR FUCHSITE,	138	142	10713	5'		
		FEW QUARTZ CARBONATE STRINGERS.	142	147	10714	5'		
		138'-140' GROUND CORE	147	152	10715	5'		
		141'6" - 142'5" GREEN CARBONATE	152	157	10716	5'		
		143'4" - 143'10" GREEN CARBONATE						
		148'3" GROUND CORE						
		149'9" - 150'4" GROUND CORE						
		154'2" - 154'7" GROUND CORE						
		155'0" - 155'4" GREEN CARBONATE						
		156'0" - 156'11" GREEN CARBONATE						
156'11"	157'6"	GREYISH GREEN SILICEOUS, SLIGHTLY CARBONATE, FINE GRAINED, TRACE TO <.5% PYRITE, MINOR FUCHSITE	157	160	10717	3'		3
157'6"	158'	BROWN CARBONATE						
158'	176'2"	GREEN CARBONATE, APPLE GREEN CARBONATE, PORPHYRITIC, MOTTLED, SILICEOUS, 1 TO 2 CARBONATE - QUARTZ VEINS / FOOT.						

*KAJ*

LOCATION \_\_\_\_\_

PAMOUR PORCUPINE MINES LTD.

HOLE NO. PAM-NH-23-1

N. \_\_\_\_\_

FOOTAGE/ANG. \_\_\_\_\_

EXPLORATION DEPT

SHEET 6 OF 12

E. ICE

DIP -50° N @ COLLAR

LOGGED BY: KIAN A. JENSEN

ELEV. \_\_\_\_\_

DIP -52.5° @ 150'

DATE FEB. 15, 16, 1983

AZ. N15°W

DIP -52.5° @ 300'

FROM	TO	DESCRIPTION	FROM	TO	SAMPLE NO.	LENGTH	AU O.P.T.	No. VEINS / SAMPLE
		158'-169' APPLE GREEN CARBONATE	160	161 1/2	10718	1 1/2		2
		160' 7" - 161' 3" BROWNISH YELLOW TO GREY, SILICEOUS, FINE GRAINED, 5-7% FINE PYRITE, CARBONATE - QUARTZ VEINS CUT THIS ZONE AND THE GREEN CARBONATES.	161 1/2	164	10719	2 1/2		4
		162' BLUISH QUARTZ VEIN, FRACTURED, C.A. = 32°						
		164' 7" - 164' 9" BROWNISH YELLOW TO GREY SILICEOUS ZONE (AS ABOVE)	164	167	10720	3'		3
		166' 2" CARBONATE - QUARTZ VEIN (1/4") C.A. = 70°						
		169' QUARTZ VEIN (1/4") WITH MINOR CHALCO PYRITE, VEIN DISPLACED 1/4" TO 1/2", C.A. = 25°	167	172	10721	5'		7
		171' 6" - 171' 9" - BROWN CARBONATE, SCHISTOSITY C.A. 35°	172	176	10722	4'		3
		169' PORPHYRITIC INCREASING, CONTORTED AND MOTTLED.						
		174' 4" - 174' 9" BROWN CARBONATE.						
		176' 2" 177' 7" FELSIC DIKE OR LARGE FRAGMENT - GREY TO MILKY WHITE, FINE GRAINED, SILICEOUS, DARK VEINLETS AND INCLUSIONS (CHLORITIC), <0.05% PYRITE IN PLACES 2% PYRITE, CONTACTS CA = 35° 176' 2" (IRREGULAR CONTACT), C.A. 85°-90° AT 177' 7"	176	177 1/2	10723	1 1/2		

*KAJ*

LOCATION \_\_\_\_\_

EXPLORATION DEPT

N. \_\_\_\_\_ FOOTAGE/ANG. \_\_\_\_\_

SHEET 7 OF 12

E. ICE DIP -50° N @ COLLAR

LOGGED BY: KIRAN A. JENSEN

ELEV. \_\_\_\_\_ DIP -52.5° @ 150'

DATE FEB. 15, 16, 1983

AZ. N 15° W DIP -52.5° @ 300'

FROM	TO	DESCRIPTION	FROM	TO	SAMPLE NO.	LENGTH	AU O.P.T.	No. VEIN / SAMPLE
177'7"	178'5"	MOTTLED EMERALD GREEN CARBONATE, MINOR PYRITE STRINGERS PARALLEL TO FOLIATION (SCHISTOSITY?) C.A. 27° SCHISTOSITY	177 1/2	178 1/2	10724	1'		
178'5"	182'8"	FELSIC DIKE? (AS ABOVE) CONTACT C.A. ~27° PARALLEL TO SCHISTOSITY AT 178'5", DIKE CONTAINS 2-3% FINE PYRITE, 180'-182' - 10%-20% FINE PYRITE, MINOR CHALCOPYRITE 182' QUARTZ VEIN (1/4") C.A. 45°	178 1/2	183	10725	4 1/2'		
182'8"	185'10"	GREEN CARBONATE, YELLOWISH GREEN TO BOTTLE GREEN, EMERALD GREEN, PORPHYRITIC, MOTTLED, FINE GRAINED, FINE PYRITE ~2%	183	186	10726	3'		4
			186	187	10727	1'		
185'10"	186'9"	FELSIC DIKE? (AS ABOVE)						
186'9"	220'7"	GREEN CARBONATE, MOTTLED, FINE GRAINED, 2-3% PYRITE INCREASES TO 5-10% IN BRIGHT EMERALD GREEN DISTORTED (BANDED?) CARBONATE. 189'-193' OCCASSIONAL BLOBS OF PYRITE (1/4") 190' QUARTZ VEINLET C.A. 25° 190'-191' FELSIC FRAGMENTS WITH 5% PYRITE 192'6"-193' " " " BLOB OF PYRITE (1/8"-1/4") 206'8" BLACK CHLORITIC MAFIC VOLCANICS? SUB ANGULAR TO ROUNDED	187	192	10728	5'		4
			192	196	10729	4'		
			196	201	10730	5'		3
			201	206	10731	5'		4

*KAJ*

LOCATION \_\_\_\_\_

PAMOUR PORCUPINE MINES LTD.

HOLE NO. PAM-NH-33-1

EXPLORATION DEPT

SHEET 8 OF 12

N. \_\_\_\_\_ FOOTAGE/ANG. \_\_\_\_\_  
 E. \_\_\_\_\_ DIP -50° N @ COLLAR  
 ELEV. ICE DIP -52.5° @ 150'  
 AZ. N 15° W DIP -52.5° @ 300'

LOGGED BY: KIAN A. JENSEN  
 DATE FEB. 15, 16, 1983

FROM	TO	DESCRIPTION	FROM	TO	SAMPLE NO.	LENGTH	AU O.P.T.	NO. VEINS / SAMPLE
		FRAGMENTS AND/OR INCLUSIONS.	206	211	10732	5'		
		207'10" - SHEARING IN BROWN CARBONATE	211	216	10733	5'		3
		209'8" - LARGE BLACKISH MAFIC FRAGMENT	216	221	10734	5'		3
		218' - FELSIC SUBANGULAR FRAGMENT IN BRIGHT EMERALD GREEN CARBONATE						
220'7"	223'7"	BROWN CARBONATE 20" LOST CORE	221	226	10735	5'		2
223'7"	269'7"	BRIGHT EMERALD GREEN CARBONATE, (AS ABOVE) MOTTLED.	226	231	10736	5'		4
		224'6" - 227' WITH FELSIC SILICEOUS MATERIAL, FINE PYRITE	231	236	10737	5'		4
		229' - 231' - " " " "						
		232' GROUND CORE						
		233'-234' YELLOW GREEN FELSIC MATERIAL - SILICEOUS 2% PYRITE						
		235'-237'3" " " " " " 2% PYRITE	236	238	10738	2'		
		237'3" BLOBS AND VERY FINE STRINGERS OF PYRITE	238	242	10739	4'		2
		237'8" LIGHT GREY GROUND MASS WITH ANGULAR FRAGMENTS OF GREEN CARBONATE						
		240'-240'10" - BROWN CARBONATE						
		243'1"-244'4" - WITH FELSIC SILICEOUS MATERIAL, PATCHES OF PYRITE.	242	247	10740	5'		

*KAJ*

LOCATION \_\_\_\_\_

PAMOUR PORCUPINE MINES LTD.

HOLE NO. PAM-NH-83-1

N. \_\_\_\_\_ FOOTAGE/ANG. \_\_\_\_\_

EXPLORATION DEPT

SHEET 9 OF 12

E. ICE DIP -50' N @ COLLAR

ELEV. \_\_\_\_\_ DIP -52.5° @ 150'

AZ. N15°W DIP -52.5° @ 300'

LOGGED BY: KIAN A. JENSEN  
DATE FEB. 15, 16, 1983

FROM	TO	DESCRIPTION	FROM	TO	SAMPLE NO.	LENGTH	AU O.P.T.	No. VEIN / SAMPLE
		252'6" - 256'0" - FELSIC SILICEOUS MATERIAL	247	252	10741	5'		4
		256' - 269'7" - GREEN CARBONATE - EITHER FRAGMENTAL? OR AGGLOMERATE?	252	257	10742	5'		1
269'7"	271'3"	FELSIC DIKE, SILICEOUS, CARBONATED, HARD, MINOR FUCHSITE, MINOR PYRITE	257	262	10743	5'		
271'3"	274'6"	GREEN CARBONATE, MOTTLED, CONTORTED IN PLACES,	262	267	10744	5'		
274'6"	275'6"	BROWN CARBONATED SILICEOUS ZONE - GROUND CORE	267	269 1/2	10745	2 1/2		
275'6"	278'	GREEN CARBONATED FRAGMENTAL - ANGULAR TO SUBANGULAR, GREY TO BUFF	269 1/2	271	10746	1 1/2		
		BROWN CARBONATED, SILICEOUS FRAGMENTS IN DARK GREYISH FINE	271	274	10747	3'		
		GRAINED GROUND MASS, 2% FUCHSITE, TRACE TO <1% PYRITE.	274	278	10748	4'		
		POSSIBLY CARBONATED FRAGMENTAL BRECCIA? OF BRECCIA TUFF?						
278'	279'3"	(AS ABOVE) 1% FUCHSITE, 2% PYRITE VERY FINE,	278	282	10749	4'		
		9" GROUND CORE.						
279'3"	282'3"	(AS ABOVE) NO GREEN CARBONATE OF FUCHSITE						
282'3"	283'1"	FELSIC DIKE, BUFF COLOUR, SILICEOUS, 10% PYRITE VERY FINE TO FINE	282	283	10750	1'		
283'1"	295'	GREEN CARBONATED FRAGMENTAL, APPLE GREEN TO EMERALD GREEN, 1-5%	283	288	10751	5'		3
		FUCHSITE, SILICEOUS, CARBONATED, FINE GRAINED GROUND MASS, QUARTZ	288	293	10752	5'		
		INCLUSIONS, 1-3% PYRITE (VERY FINE TO 2mm. OR. 1/16")	293	298	10753	5'		
295'	296'5"	PORPHYRITIC FELSIC SILICEOUS MATERIAL, EQUIGRANULAR, CARBONATED PHENOCRYSTS,						
		BUFF BROWN TO BLACKISH GROUND MASS, POOR SCHISTOSITY, POSSIBLY						
		CARBONATED LATITE TUFF, ?						

*KAJ*

LOCATION \_\_\_\_\_

PAMOUR PORCUPINE MINES LTD.

HOLE NO. PAM-NH-83-1

N. \_\_\_\_\_

FOOTAGE/ANG. \_\_\_\_\_

EXPLORATION DEPT

SHEET 10 OF 12

E. ICE

DIP -50° N @ COLLAR

LOGGED BY: KIAN A. JENSEN

ELEV \_\_\_\_\_

DIP -52.5° @ 150'

DATE FEB 15, 1983

AZ. N15°W

DIP -52.5° @ 300'

FROM	TO	DESCRIPTION	FROM	TO	SAMPLE NO.	LENGTH	AU O.P.T.	No VEINS /SAMPLE
296'5"	298'6"	FELSIC SILICEOUS MATERIAL, PALE APPLE GREEN CARBONATED, FEW SUBANGULAR	298	303	10754	5'		
		TO SUB-ROUNDED FRAGMENTALS						
298'6"	301'8"	GREEN CARBONATED FRAGMENTAL?, 2-5% FUCHSITE, SILICEOUS AND CARBONATED,						
		MINOR PYRITE <1%, MASSES AND INCLUSIONS OF QUARTZ.						
301'8"	320'3"	PORPHYRITIC FELSIC, DARK GREYISH GROUND MASS WITH CARBONATED BUFF	303	308	10755	5'		2
		PHENOCRYSTS, SCHISTOSE, POSSIBLY LATITE TUFF TO LATITE AGGLOMERATE	308	313	10756	5'		3
		307'10" - 308'4" - GREEN CARBONATE, QUARTZ BLOBS.	313	318	10757	5'		1
		310'4" - 314" - CARBONATED, PORPHYRITIC	318	320 1/2	10758	2 1/2'		
320'3"	325'9"	EMERALD GREEN TO APPLE GREEN CARBONATE, IRREGULAR CONTACTS	320 1/2	325	10759	4 1/2'		
		C.A. 75°-85°						
		322'1" - 322'7" QUARTZ MASSES, 1-2% PYRITE.						
325'9"	332'5"	TUFF TO BRECCIA, GREYISH TO LIGHT BROWNISH GREY, SCHISTOSE,	325	330	10760	5'		
		POSSIBLE BANDING, LITTLE TO NIL FUCHSITE, ~1% PYRITE.	330	332 3/4	10761	2 3/4'		
332'5"	353'9"	GREEN CARBONATE, SCHISTOSE, FINE GRAINED, 5-10% FUCHSITE, 2% FINE	332 3/4	336 1/2	10762	4 1/4'		
		PYRITE, SOME FELSIC FRAGMENTALS (POSSIBLY TUFF TO AGGLOMERATE?)	336 1/2	338	10763	1 1/2'		
		335'7" - 336'3" GREYISH FELSIC MATERIAL, 10% FINE PYRITE, CONTACTS 50°+60°	338	341	10764	3'		
		336'3" - 337'10" " " " " , 15% FINE PYRITE, CONTACTS 60°+55°						
		339' - 339'7" BUFF FELSIC MATERIAL, 20% PYRITE (1/16")						
		339'10" - 340'6" FELSIC FRAGMENTS + QUARTZ VEINING, 20% FUCHSITE.						

*KAJ*

LOCATION \_\_\_\_\_

EXPLORATION DEPT

SHEET 11 OF 12

N. \_\_\_\_\_ FOOTAGE/ANG. \_\_\_\_\_  
 E. \_\_\_\_\_ DIP -50° N @ COLLAR  
 ELEV. ICE DIP -52.5° @ 150'  
 AZ N15°W DIP -52.5° @ 700'

LOGGED BY: KIAN A. JENSEN  
 DATE FEB 15, 16, 1983

FROM	TO	DESCRIPTION	FROM	TO	SAMPLE NO.	LENGTH	AU O.P.T.	NO VEIN / SAMPLE
		341'5" - 342'11" BLACKISH DARK GREEN, CHLORITIC, SCHISTOSE, FRAGMENTALS, SILICEOUS, NO FUCHSITE	341	346	10765	5'		9
		342'11" QUARTZ VEIN, KRINKLED, (1") BARREN C.A. 20°-30°						
		344'2" QUARTZ VEIN, (3/4") BARREN C.A. 25°						
		346' QUARTZ STRINGERS, AND MASSES	346	351	10766	5'		14
		347'8" " " " "						
		353' - 353'9" DECREASING AMOUNT OF FUCHSITE, COLOUR CHANGE OF GREEN CARBONATE (TRANSITION ZONE)	351	356	10767	5'		7
353'9"	363'2"	FRAGMENTAL TO BRECCIA, DECREASING AMOUNT OF CARBONATIZATION, INCREASING AMOUNT OF CHLORITIZATION, MORE SCHISTOSITY, BLACK GREEN FINE GRAINED CHLORITIC SCHIST.	356	360	10768	4'		8
363'2"	369'	BLACK GREEN, FINE GRAINED, CHLORITIC, CARBONATED, SILICEOUS, INCREASING AMOUNT OF TALC, MINOR PYRITE, CHLORITIC SCHIST TO TALCOSE CHLORITIC SCHIST.	360	364	10769	4'		
			364	369	10770	5'		
369	387'10"	TALC-CHLORITIC SCHIST, BLACKISH GREEN, SOFT, DECREASING CARBONATE, QUARTZ 3-5%, 371' SCHISTOSITY C.A. 60°						
387'10"	394'2"	CHLORITIC SCHIST, INCREASING AMOUNT OF PHENOCRYSTS, CARBONATE REPLACEMENT, (POSSIBLY PORPHYRITIC UNIFORM META BASALT FLOW?)						

*KAJ*

LOCATION \_\_\_\_\_

N. \_\_\_\_\_ FOOTAGE/ANG. \_\_\_\_\_

E. \_\_\_\_\_ DIP -50° N @ COLLAR

ELEV. ICE DIP -52.5° @ 150'

AZ. N15°W DIP -52.5° @ 300'

LOGGED BY: KIAN A. JENSEN

DATE FEB 15, 16, 1983

FROM	TO	DESCRIPTION	FROM	TO	SAMPLE NO.	LENGTH	AU O.P.T.
		389'6" FELSIC INTRUSIVE 2" WIDE, BUFF COLOUR.					
		387'10" - 394'2" APPROXIMATELY 30% MEDIUM GRAINED PHENOCRYSTS CARBONATED REPLACEMENT OR VESICLES.					
394'2"	426'	MASSIVE, FINE GRAINED, BLACK GREEN, UNIFORM META-BASALT, NO CARBONATIZATION, TRACE TO 1% PYRITE.					
		398' QUARTZ-CARBONATE VEIN (1/4") C.A. 23°					
		420' BLEACHED AREA, MINOR VEINING + HEMATITE STAINING.					
426'		END OF HOLE.					

*Kian Jensen*  
*Nov. 15/83*



#342



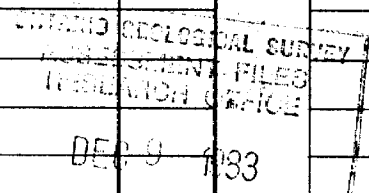
42A10SW0224 27 MACKLEM

900

Name and Postal Address of Recorded Holder  
**Macklem Twp**  
**PAMOUR PORCUPINE MINES LIMITED** T-498  
**P.O. BAG 2010, TIMMINS, ONTARIO P4N 7X7**

Summary of Work Performance and Distribution of Credits

Total Work Days Cr. claimed 426	Mining Claim		Work Days Cr.	Mining Claim		Work Days Cr.	Mining Claim		Work Days Cr.
	Prefix	Number		Prefix	Number		Prefix	Number	
	P	532104	47.3	P	532112	47.3			
		532105	47.3						
		532106	47.3						
		532107	47.3						
		532108	47.3						
		532109	47.3						
		532110	47.3						
		532111	47.3						

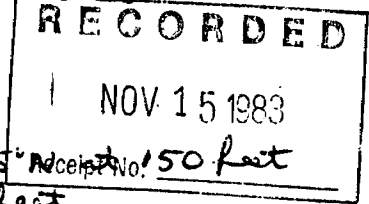
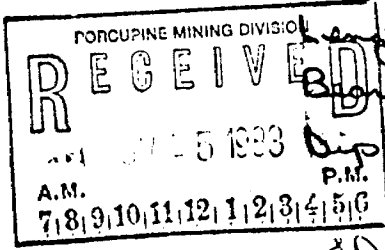


All the work was performed on Mining Claim(s): **P. 546624**



Required Information eg: type of equipment, Names, Addresses, etc. (See Table Below)

**MOLE 83-1 ; SIZE BQ ; DATE FEB. 13 TO 15, 1983**  
**LOCATION: 620 FEET WEST AND 680 FEET SOUTH OF CLAIM POST NO. 1 OF CLAIM P. 546624**  
**DRILL COMPANY: BRADLEY BROTHERS LIMITED**  
**HWY 101 WEST, TIMMINS TEL. 267-1456**  
**Date: Feb-13 to 15, 1983**  
**Core: BQ diameter 1.432 inches**  
**Length: 426 feet**  
**Beginning: N 15° W**  
**Dip: -50° N at collar, -52.5° N at 150 feet**  
**and -52.5° N at 300 feet.**



Date of Report: **Nov 15/83**  
 Recorded Holder or Agent (Signature): **Kian Jensen**

Certification Verifying Report of Work  
 I hereby certify that I have a personal and intimate knowledge of the facts set forth in the Report of Work annexed hereto, having performed the work or witnessed same during and/or after its completion and the annexed report is true.

Name and Postal Address of Person Certifying  
**KIAN A. JENSEN 374 PATRICIA BLVD.**  
**TIMMINS, ONTARIO**  
 Date Certified: **Nov 15/83**  
 Certified by (Signature): **Kian Jensen**

Table of Information/Attachments Required by the Mining Recorder

Type of Work	Specific information per type	Other information (Common to 2 or more types)	Attachments
Manual Work	Nil	Names and addresses of men who performed manual work / operated equipment, together with dates and hours of employment.	Work Sketch: these are required to show the location and extent of work in relation to the nearest claim post.
Shaft Sinking, Drifting or other Lateral Work			
Compressed air, other power driven or mechanical equip.	Type of equipment	Names and addresses of owner or operator together with dates when drilling/stripping done.	
Power Stripping	Type of equipment and amount expended. Note: Proof of actual cost must be submitted within 30 days of recording.		
Diamond or other core drilling	Signed core log showing; footage, diameter of core, number and angles of holes.	Nil	Work Sketch (as above) in duplicate
Land Survey	Name and address of Ontario land surveyor.		Nil