

INTEX MINING COMPANY LIM



42A11NE0016 63.3965 TULLY

010

SUITE 1500
4 KING STREET WEST
TORONTO, ONTARIO
M5H 1B6

INTEX MINING COMPANY LIMITED
FRANKFIELD EXPLORATIONS LIMITED

DIAMOND DRILLING PROGRAMME - 1981
TULLY TOWNSHIP PROPERTY
PORCUPINE MINING DIVISION, ONTARIO

In 1981, a programme of geophysics and diamond drilling was conducted over the Tully Township property by Intex Mining Company Limited and Frankfield Explorations Limited.

The 22-claim group is located in Tully Township, approximately 25 miles north-northeast of Timmins and is comprised of the following claims: 97938 to 97949, inclusive; 99286 to 99289, inclusive; and 100437 to 100442, inclusive.

The group was staked originally to cover a series of airborne electromagnetic anomalies associated with a band of volcanic flows and tuffs (ranging from rhyolite, andesite and basalt to ultramafics) which extend from the vicinity of the Kidd Creek copper deposit through Prosser Township and into Tully Township.

Originally, the group was staked as a base metal prospect; but, subsequently, diamond drilling of the electromagnetic conductors outlined three gold deposits: the Texmont and Frankfield zones on the Intex property and a similar deposit on the Nickel Offsets property which adjoins to the south.

All three deposits are associated with graphitic sediments, basaltic and andesitic flows, in close proximity to ultramafic flows (serpentinite, peridotite) and are located within tuffaceous andesite horizons which host the veins. The veining is associated with a competent, brittle tuffaceous horizon which contacts an incompetent serpentinite. This association is indicated to be through-going as to strike and depth continuity; and further occurrence of gold values could be reasonably expected along strike and at depth anywhere along the zone.

The gold concentrations appear to be localized by north-south faulting; and a south-trending fault in southwest Tully Township may genetically relate these deposits to the Pamour gold producing area 15 miles to the south.

Each of the deposits was discovered as a result of drilling a conductive zone. Heavily disseminated pyrite and arsenopyrite, along with graphitic horizons, account for the conductors.

HISTORY

In 1968-9, Intex Mining Company outlined by diamond drilling a gold deposit, 500 feet long and 10 feet wide, averaging 0.22 ozs. gold per ton (the Texmont Zone).

Subsequently, McIntyre Porcupine Mines outlined a deposit of 835,000 tons on the Nickel Offsets property, one mile to the south. Overburden, in excess of 100 feet on the McIntyre property, apparently deterred underground exploration of their deposit.

Diamond drilling what appeared to be the faulted extension of the Texmont Zone conductor, during 1974-5-6, Intex and Frankfield outlined the Frankfield Zone, 4000 feet east of the Texmont Zone.

Along a 600-foot length, the Frankfield Zone averaged 0.23 ozs. gold per ton over an average core width of 15.5 feet. Significant gold values (0.15 ozs. gold per ton) were intersected on the conductor 600 feet east of the zone outlined by drilling. Overburden on the Frankfield Zone averaged 45 feet.

THE DIAMOND DRILLING PROGRAMME

During the period March to July, 198¹/₂, sixteen holes (4,708 feet) were diamond drilled on the Tully Township property.

The drilling was carried out by Mr. Arthur Dungee of Thunder Bay, Ontario, utilizing AQ wireline equipment. All core was logged by Dr. H. D. Carlson, Consulting Geologist, of Timmins, Ontario. The results of the diamond drilling, as indicated by Carlson's drill logs, will be summarized in this report.

The direct field supervision of the drilling was done by Mr. Philippe Roby of Senneterre, Quebec. The drill core is stored on the Timmins property of Diepdaume Mines Ltd. All assaying was carried out by Swastika Laboratories of Swastika, Ontario.

The objective of the diamond drilling programme was to explore possible extensions of the Texmont and Frankfield Zones; to further detail the Texmont Zone, checking its upward extensions; and to investigate three separate conductors not associated with either zone.

If the continuity indicated by preliminary surface drilling can be established by detailed diamond drilling of the Texmont and Frankfield Zones, the probable drill indicated reserves would be:

<u>Zone</u>	<u>Tons</u>	<u>Gold (Ozs/Ton)</u>	<u>Width (feet)</u>
Texmont	114,000	0.22	10.0
Frankfield	191,000	0.23	14.0
Totals:	<u>305,000</u>	<u>0.226</u>	<u>12.5</u>

A. WESTWARD EXTENSION OF THE TEXMONT ZONE

Holes 81H-1, 81H-2 and 81H-6 were drilled to explore conductors representing possible extensions of the Texmont Zone.

• Hole 81H-1 (297 feet)

This hole intersected graphitic material and sulphides with some minor silicification. The sulphide mineralization is heavy-up to 30% - in some sections. No significant values were intersected.

• Hole 81H-2 (301 feet)

This hole intersected graphitic tuffs and sulphide (pyrite) concentrations up to 50%. No significant values were obtained. The hole terminated in graphitic tuff; and should be extended through this horizon.

• Hole 81H-6 (277 feet)

The conductor in this hole was accounted for by heavy graphite. Silicification at 56 feet and at 70-76 feet should be sampled. No significant values in this hole.

B. DETAILED DRILLING OF UPWARD EXTENSIONS OF THE TEXMONT ZONE

Holes 81H-3, 81H-4, 81H-5, 81H-7 and 81H-8 were bored to check the upward extension of the Texmont Zone indicated by previous diamond drilling.

• Hole 81H-3 (217 feet)

The hole intersected considerable silicification in agglomeratic andesite tuff. Sulphide mineralization associated with the quartz is minor - of the order of 1%. Good gold values were intersected in this hole.

<u>Footage</u>	<u>Width (Feet)</u>	<u>Gold (Ozs./Ton)</u>
84.0 - 92.0	8.0	0.05
129.0 - 134.0	5.0	0.22
134.5 - 139.5	5.0	0.39
139.5 - 144.5	5.0	0.30
144.5 - 150.0	5.5	0.32
150.0 - 156.5	6.5	0.04
175.0 - 180.0	5.0	0.06
186.0 - 191.0	5.0	0.12

• Hole 81H-4 (207 feet)

This hole is in homogeneous andesite tuff. There is less silicification than in 81H-3, but the silicification is more evenly distributed than in that hole and displays minor visible pyrite.

There is relatively heavy silicification below 165 feet; and the hole should be sampled below 165 feet. Values are as follows:

<u>Footage</u>	<u>Width (Feet)</u>	<u>Gold (Ozs./Ton)</u>
134.0 - 141.0	7.0	0.25
141.0 - 145.0	4.0	0.12
145.0 - 151.0	6.0	0.26
151.0 - 155.5	4.5	0.20
155.5 - 159.0	3.5	0.08
159.0 - 163.5	4.5	0.04

• Hole 81H-5 (351 feet)

The hole intersected dense andesitic tuff.

<u>Footage</u>	<u>Width (Feet)</u>	<u>Gold (Ozs./Ton)</u>
206.0 - 211.0	5.0	0.09
223.0 - 229.0	6.0	0.13

Further sampling indicated below 240 feet.

• Hole 81H-7 (207 feet)

In agglomeratic andesite, this hole returned only low values.

<u>Footage</u>	<u>Width (Feet)</u>	<u>Gold (Ozs./Ton)</u>
131.0 - 137.0	6.0	0.07
137.0 - 143.0	6.0	0.04

• Hole 81H-8 (209 feet)

This hole intersected a sense graphitic horizon; and returned the following values:

<u>Footage</u>	<u>Width (Feet)</u>	<u>Gold (Ozs./Ton)</u>
95.0 - 102.0	7.0	0.12
125.0 - 132.0	7.0	0.04

C. CONDUCTOR NORTH OF THE TEXMONT ZONE

• Hole 81H-9 (317 feet)

In massive, dark green tuff, this hole hit more intensive silicification than any of the previous holes. Gold values, however, were not significant.

D. EXTENSIONS OF THE FRANKFIELD ZONE

Holes 81H-10 to h1H-14, inclusive, were drilled to investigate possible extensions of the Frankfield Zone. They did little to extend the size of the deposit.

• Hole 81H-10 (346 feet)

The hole intersected serpentinite and andesite; and only minor sulphide mineralization. No gold values.

● Hole 81H-11 (353 feet)

This hole intersected a graphitic conductor and heavy sulphides (50-75%) from 248-287 feet.

<u>Footage</u>	<u>Width (Feet)</u>	<u>Gold (Ozs./Ton)</u>
316.0 - 322.5	6.5	0.12

This section had 5-10% pyrite with minor arsenopyrite.

● Hole 81H-12 (327 feet)

The hole intersected serpentinite and andesite, with more silicification in the latter; and some minor gold values. A quartz vein, at 105 feet, should be sampled.

<u>Footage</u>	<u>Width (Feet)</u>	<u>Gold (Ozs./Ton)</u>
265.0 - 269.0	4.0	0.06

● Hole 81H-13 (127 feet)

No core was recovered; and the hole was abandoned.

● Hole 81H-14 (302 feet)

The hole intersected andesite and basalt, mineralized with minor pyrite and arsenopyrite. Ground core at 244.5 - 257.0 feet indicates faulting.

Quartz veins at 103.0 - 124.0 feet and 220.0 - 224.0 feet should be sampled.

E. EAST ANOMALY

Hole 81H-15 (406 feet) was drilled to check this anomaly in the northeast corner of the claim group, southeast of the Frankfield Zone. It cut a mafic to ultramafic flow characterized by talc, chlorite and serpentine alteration. No gold mineralization was encountered.

F. ANOMALY IN SOUTH SECTOR OF CLAIM 99286

Hole 81H-16 (464 feet) was drilled to investigate an extensive vertical loop electromagnetic anomaly. The hole intersected a graphitic conductor and followed along the contact of the volcanics and a diabase dike. There were 44 feet of lost core. No gold values were encountered.

CONCLUSIONS:

The drilling programme established the upward extension of the Texmont Zone. Further sampling is indicated for the drill core on the Frankfield Zone. On this Zone also, the following gaps should be investigated by drilling:

- 1) Between Holes 75TF-13 and 81H-14;
- 2) Between Holes 75TF-9 and 76IF-19;
- 3) Between Holes 76IF-19 and 82H-10;
- 4) Between Holes 82H-11 and 82H-12.

Respectfully submitted,

H. A. Pearson

H. A. Pearson,



June 28, 1982

Terms of Reference

This survey was carried out by agreement with Intex Mining Company Limited and Frankfield Explorations Limited. The area surveyed covered the complete area of the 22 claim group known as claim numbers 97938 to 97949 inclusive, 99286 to 99289 inclusive and 100437 to 100442 inclusive. The survey was carried out on north-south lines spaced 400 feet apart with a control base line known as base line B located on the concession line between concessions 2 and 3. Sub-control base line known as base line C was established south of the Frankfield zone for prepared control. Intermediate lines spaced 200 feet apart were employed over the Frankfield zone, the Texmont zone and the zone immediately west of the Texmont zone.

The survey was carried out under the direct field supervision of Mr. Philippe Roby of Senneterre, Quebec and Mr. Paul Perrault of Senneterre, Quebec.

The total mileage surveyed was approximately 26 line miles and the total mileage line cut was approximately 29 line miles.

The drilling was carried out by Mr. Arthur Dungee of Thunder Bay, Ontario, utilizing AQ wireline equipment and consisted of sixteen holes indicated as H-1 to H-16 inclusive on the accompanying map.

All core was logged by Dr. H.D. Carlson, Consulting Geologist, of Timmins, Ontario.

The direct field supervision of the drilling was done by Mr. Philippe Roby of Senneterre, Quebec. The total footage drilled was 4,708 feet.

All assaying was carried out by Swastika Laboratories of Swastika, Ontario.

Methods Used and Presentation of Results

Electromagnetic Survey

The Electromagnetic Survey employed the Sheridan-Kelk Dual Frequency Magniphase Electromagnetic Instrument operated in the horizontal coil configuration with a transmitter-receiver separation of 200 feet. In general, readings of amplitude and phase of the resultant field at the high frequency (2400 cps) were recorded at station intervals of 100 feet.

The results of the survey, as plotted on the accompanying map, show only the profile of the high frequency phase.

In general, in areas considered of interest, the station interval was reduced to 50 feet.

Discussion of Geophysical Results

In general, a series of conductors were indicated on the property, two of which coincided with the Texmont and Frankfield zones. In addition, the survey revealed that both zones of conductivity extended westerly from the known mineralization. In both cases, areas of extensive widths of sulphide mineralization were found to extend the anomalies. Unfortunately, these zones of sulphide mineralization were non-gold bearing.

It is the opinion of the writer that even though conductive zones are found immediately over the Texmont and Frankfield zones, the gold mineralization is probably not directly associated with the features giving rise to the conductors but is associated with some subsidiary effect in which stripping and underground work confirms. This hypothesis will remain in theory only. The second theory that may possibly explain the results is that there are two chances of sulphide mineralization both of which have been implaced in the same structures. One is barren sulphides and the other is gold bearing.

Conclusions

The work to date has indicated that the Texmont zone, whatever its form, comes through to the sub-surface and at least in the area of Hole H-3, expands in width and grade. It is very easy to make a case for the Texmont representing a simple structure, however, the writer believes that this will not turn out to be the case and that the intersections obtained in this drill and in the previous programmes on the Texmont zone will prove to be a series of ore shoots which will be controlled by some different structure yet to be determined. The intersections in hole H-4 although looking identical to the intersections in hole H-3 and being of similar grade of width are unexplainable by the simple ore zone theory.

Recommendations

It is recommended that the area immediately over the surface projection of the Texmont zone be stripped and the zone examined and sampled in detail on the surface including, if possible and practical, the shipment of a bulk sample from the surface of the zone as exposed. It is quite probable that after the stripping is complete, a new picture of the ore structure will unfold.

All of which is respectfully submitted.

J.P. Sheridan, P.Eng.



JPS/jlm



J. P. Sheridan, P.ENG.
MINING GEOPHYSICIST

December 11, 1981

The President and Directors
Intex Mining Company Limited
Suite 1500
4 King Street, West
TORONTO, Ontario.
M5H 1B6

The President and Directors
Frankfield Explorations Limited
27 Queen Street, East
Suite 402
TORONTO, Ontario.
M5C 2M6

Ministry of Natural Resources
RECEIVED

DEC 22 1981

THE DIRECTOR
MINING TAXATION AND
OMEP OFFICE

REPORT - Geophysical Exploration Programme and
Follow-Up Diamond Drilling Programme
Tully Township Property
Porcupine Mining Division, Ontario.

During the months of February and March, 1981 an Electromagnetic Survey was carried out on your Tully Township property located in the Porcupine Mining Division of Ontario.

This programme was followed up by an approximate 4,708 foot diamond drilling programme consisting of sixteen diamond drill holes.

These holes were designed primarily to explore for extensions of the Texmont zone, to test for extensions of the Frankfield zone and to explore three separate conductors not associated with either zone. In addition, five drill holes were used to further outline the Texmont zone and to prove the upward continuation of the zone to the sub-surface as a prelude to the further development of the Texmont zone.

Summary of Results of the Exploration Programme

The Electromagnetic Survey revealed several obvious extensions of the structure associated with the Texmont zone. These extensions were tested by Holes H-1, H-2 and H-6. These holes revealed a very large wide zone of sulphide mineralization which unfortunately proved to be barren. Two obvious extensions of the Frankfield zone were indicated to the west of the known ore structure. These zones were tested by Holes H-10, H-11 and H-12. H-10 and H-11 likewise intersected extensive sulphide mineralization which proved to be barren. H-15 was drilled to test a large E.M. anomaly representing an conductive zone located on our eastern boundary. The structure was found to satisfactorily expand the anomaly but unfortunately, was barren of any significant gold mineralization. Hole H-9 was drilled to test a conductor occurring north of the Texmont zone. It likewise satisfactorily expand the anomaly but was not gold bearing. Hole H-16 was drilled on the southern portion of Claim number 99286 to test a large regional E.M. anomaly previously found with a Vertical Loop Survey and which was slightly indicated by our current survey. No extension for the anomaly was found in the drill hole. Hole H-3, H-4, H-5, H-7 and H-8 intersected what it is believed to be the upward extension of the Texmont zone and showed ore grade mineralization with Hole H-3 revealing the widest widths of good grade ore found to date on the property.

Red

DIAMOND DRILL RECORD

Hole No. 1-1-81 Sheet No. 1

Property Intex
 Location Tully twp.
 Latitude 4 ± 00 E
 Departure 200' N
 Bearing Drilled N 45°

Dip

Elev. Collar _____
 Datum _____
 Date Started Mar 17 1981
 Date Completed Mar 28 1981
 Drilled by Dungee
 Logged by D. H. P. Carlson

Total Footage _____

Footage		Formation	Sample Number	Sample Footage	Sample Width	Gold Sample	Gold Sludge	Remarks
From	To							
0.0	41.8	<u>Casing.</u>	<u>9</u>	<u>39.6' - 42.6'</u>	<u>3.0'</u>	<u>0.002</u>		
41.8	90.0	<p><u>Tuffaceous conglomerate. Fragments are medium-grey in colour and all sizes from pin-head to several inches long. Matrix is splintered and dark grey to black in colour. Suggests of bedding at 40° to 70° to core axis. Proportions of fragments to matrix variable in range 70% to 10% and getting lower progressively down the hole; also, the bedding (bedding? schistosity?) getting progressively more pronounced down the hole. Luminescent staining is common in the first sixteen feet of core. Minor</u></p>						



030

(Handwritten initials)

DIAMOND DRILL RECORD

Hole No. 1-1-81 Sheet No. 2

Property Intex
 Location _____
Tully Twp.
 Latitude 4 F 00 E
 Departure 300' N
 Bearing Drilled N 45°

Dip _____

 Total Footage _____

Elev. Collar _____
 Datum _____
 Date Started Mar 17 1981
 Date Completed Mar 20 1981
 Drilled by Dunage
 Logged by Dr. H. D. Carlson

Footage		Formation	Sample Number	Sample Footage	Sample Width	Gold Sample	Gold Sludge	Remarks
From	To							
		silicification present in the form of shreds and stringers of quartz up to 1 1/2" long. Very minor sulphides (<1% pyrite) at 50.0', at 60', at 63.2' and at 65'. Size of fragments getting progressively smaller down the hole. Core split 85.0' - 90.0', but only very minor sulphides (<1% pyrite) visible.	8	85.0' - 90.0'	5.0'	N.I.		
90.0'	124.9'	Mainly dark lustrous matrix with few visible fragments. In part the matrix is graphitic, most evidently at 95.0' and 96.5' where the graphite is firm and almost crystalline (none seen anywhere as sooty). Core is broken between 97' and 117', with only 3 feet recovered.						<i>[Signature]</i>

Date of Examination _____

DIAMOND DRILL RECORD

Hole No. 1-1-81 Sheet No. 3

Property Intex
 Location Tully twp.
 Latitude 4 + 00 E
 Departure 200' N
 Bearing Drilled N 45°

Dip _____

 Total Footage _____

Elev. Collar _____
 Datum _____
 Date Started Mar 17 181
 Date Completed Mar 20 181
 Drilled by D. Magee
 Logged by Dr. H. D. Carlson

Footage		Formation	Sample Number	Sample Footage	Sample Width	Gold Sample	Gold Sludge	Remarks
From	To							
		Core split as follows:						
		91.0' - 97.0' - generally minor sulphide mineralization (1-2% pyrite) in thin stringers and disseminated, from 91.0 to 96.0'. Heavy sulphide mineralization (20%-30% pyrite) in slugs and blocks up to 1/2" in dia. from 96.0' to 97.0'. Some silicification and carbonatization and minor red hematite staining with the pyrite.	1	93.0' - 97.0'	4.0'	0.002		
		121.8 - 124.5 - generally minor sulphides (1-2% pyrite) except for last 3" where there is 20-30% pyrite in slugs & blocks.	2	121.0' - 123.6'	2.6'	0.002		

DPK

Date of Examination _____

DIAMOND DRILL RECORD

Hole No. 1-1-81 Sheet No. 4

Property Intex
 Location Tully twp.
 Latitude 47° 00' E
 Departure 200' N
 Bearing Drilled N 45°

Dip

Total Footage _____

Elev. Collar _____
 Datum _____
 Date Started Mar 17 1981
 Date Completed Mar 20 1981
 Drilled by Dunace
 Logged by Dr. H.P. Carlson

Footage		Formation	Sample Number	Sample Footage	Sample Width	Gold Sample	Gold Sludge	Remarks
From	To							
124.7	127.0	Tullaceous agglomerate similar to section from 41.8' to 90.0'.						
127.0	139.5	Rock is similar to that from 91.0' to 97.0'. Sulphide mineralization as follows: 127-129 - ≈ 25% pyrite. 129-132 } 3%-5% pyrite in blobs, } stringers & disseminated grains, 133.1-139.5 } with minor quartz & carbonate.	3	127.0'-132.0'	5.0'	N:1		
			4	133.0'-138.0'	5.0'	N:1		
139.5	141.5	Tullaceous agglomerate similar to section from 41.8' to 90.0'.						
141.5	147.0	Rock is similar to that from 91.0' to 97.0'. ≈ 1%-3% pyrite.	5	141.6-146.0	4.6'	N:1		
147.0	149.8	Tullaceous agglomerate similar to section from 41.8' to 90.0'.						

Handwritten signature

Date of Examination _____

DIAMOND DRILL RECORD

Hole No. 1-1-81 Sheet No. 5

Property Intex
 Location Tully twp.
 Latitude 4 + 00 E
 Departure 300' N
 Bearing Drilled N + 5°

Dip

Total Footage _____

Elev. Collar _____
 Datum _____
 Date Started Mar 17 1981
 Date Completed Mar 20 1981
 Drilled by Dungee
 Logged by Dr. H.D. Carlson

Footage		Formation	Sample Number	Sample Footage	Sample Width	Gold Sample	Gold Sludge	Remarks
From	To							
147.8	156.5	Rock is similar to that from 91.0' to 97.0'. \approx 5% Pyrite in bands, stringers and disseminated grains; leucite sulphide at about 151.0'. Minor quartz & carbonate, etc.	6	147.6' - 156.6'	7.0'	Nil		
156.5'	257.0	Tuffaceous aggregate similar to section from 41.8' to 90.0'. Rock becomes progressively lighter in colour and the proportion of dark matrix material falls going progressively down the hole. Note pyrite @ 158', 162', 164', 189.5', 191.0', 195.0', 208.5', 218', 219'. Only very minor sulphides seen from 232.0' to 243.0'.	7	232.6' - 239.6'	7.0'	0.002		
257.0'	281.0'	Tuff and aggregate tuff. Light-colored as above; fragmental character						<i>J.P.H.</i>

Date of Examination _____

DIAMOND DRILL RECORD

Hole No. 1-1-81 Sheet No. 6

Property Intex
 Location TULLY TWP.
 Latitude 4 + 00 E
 Departure 200' N
 Bearing Drilled N 45°

Dip

Total Footage _____

Elev. Collar _____
 Datum _____
 Date Started Mar 17 1981
 Date Completed Mar 20 1981
 Drilled by H. P. [unclear]
 Logged by [unclear] Dungee

Footage		Formation	Sample Number	Sample Footage	Sample Width	Gold Sample	Gold Sludge	Remarks
From	To							
		varied and rather minor; banding not pronounced. Pyrite (<1%) at 272'. More silicification than higher in the hole.						
281.0'	297.0'	Massive greenish-grey tuff. Neither banding nor fragmental character is pronounced. More silicification evident than further up the hole. No sulphides noted.						
		<u>End-of-hole.</u>						

[Signature]

Date of Examination March 26-27, 1981.

DIAMOND DRILL RECORD

Hole No. R-1-81 Sheet No. 1

Property Intex
 Location Tully twp.
 Latitude 6 + 00 E
 Departure 1 + 25 N
 Bearing Drilled N 45°

Dip

Elev. Collar _____
 Datum _____
 Date Started Mar 21 181
 Date Completed Mar 27 181
 Drilled by Dunqee
 Logged by Dr. H.D. Carlson

Total Footage _____

Footage		Formation	Sample Number	Sample Footage	Sample Width	Gold Sample	Gold Sludge	Remarks
From	To							
0.0	240.0	Casing.						
240.0	203.0	Tuffaceous Agglomerat. Banding evident but not pronounced @ 60°-70° to c/a. Fragments are pin-head size to several inches and erratically distributed; generally buff to light grey in colour, a little lighter than the aphanitic matrix. Some dark grey streaks @ 48.0'. Minor sulphides (< 1% pyrite) @ 47.5', 52', 57', 88.2', 99.3', 102.3', 103.2', 104.1', 107.5', 108.5', 110.8', 111.1', ≈ 112.0', 113.5', 124.5'-127.0', 128.0'-129.5', 133.5', 136.0', 137.4', 138.0', 152.1', 175'-176', 200.5'. Very minor siliceification and carbonatization, etc., in form of stringers, veins, etc.						

Handwritten initials

Date of Examination _____

DIAMOND DRILL RECORD

Hole No. R-1-81 Sheet No. R.

Property Intex
 Location Tully Twp.
 Latitude 6 + 00 E
 Departure 1 + 25 N
 Bearing Drilled N 45°

Dip

Total Footage _____

Elev. Collar _____
 Datum _____
 Date Started Mar 21 181
 Date Completed Mar 27 181
 Drilled by Dungee
 Logged by Dr. H.D. Carlson

Footage		Formation	Sample Number	Sample Footage	Sample Width	Gold Sample	Gold Sludge	Remarks
From	To							
203.0	235.0	Similar to the material immediately above, but the matrix material increases in quantity and gets darker in colour progressively down the hole. Very small disseminated pyrite (<1%) from 207.5' to 208.5'.						
235.0	260.0	Agglomerate tuffaceous graphite schist. Schistosity at 70°-80° to c/a. Dark grey to black in colour. Fragments and graphite variable. Pyrite is present also in variable amounts (from <1% to >50%) but overall average about 5%. Siliceous and carbonaceous more pronounced than further up the	10	235.0-240.0	5.0'	Nil		
			11	240.0-245.0	5.0'	Nil		
			13	250.0-255.0	5.0'	Nil		
			12	245.0-250.0	5.0'	Nil		
			14	255.0-260.0	5.0'	Nil		

[Signature]

Date of Examination _____

DIAMOND DRILL RECORD

Hole No. R-1-81 Sheet No. 3.

Property Intex
 Location Fully Turp.
 Latitude 6 + 00 E
 Departure 1 + 25 N
 Bearing Drilled N 45°

Dip

 Total Footage _____

Elev. Collar _____
 Datum _____
 Date Started Mar 21 1981
 Date Completed Mar 27 1981
 Drilled by AD Carson - Dunqee
 Logged by AD Carson

Footage		Formation	Sample Number	Sample Footage	Sample Width	Gold Sample	Gold Sludge	Remarks
From	To							
		hole. Also redish to metallic present (check in exinite and tur).						
R60.0	R64.0	light greenish-grey massive till with few dark grey interbeds @ 70° to c/p.	15	R64.0'-R70.0'	6.0'	Nil		
R64.0	R70.5	Material similar to that from R35.0 to R60.0.	16	R72.0'-R75.0'	3.0'	Nil		
R70.5	R72.0	" " " " " R60.0 to R64.0	17	R79.5'-R84.5'	5.0'	0.005		
R72.0	R75.0	" " " " " R35.0 to R60.0	18	R84.5'-R89.5'	5.0'	Nil		
R75.0	R79.5	" " " " " R60.0 to R64.0	19	R89.5'-R97.0'	7.5'	Nil		
R79.5	306.0	" " " " " R35.0 to R60.0	20	R97.0'-306.0'	4.0'	Nil		
		but darker in colour.						
		Material similar to that from R35.0 to R60.0.						
		End-of-hole *						
		*Flaming bit in hole, so should try another set-up to pierce graphite so that well into footwall material.						

AD

Date of Examination March 30th - 31st, 1981.

RECEIVED APR 13 1981

DIAMOND DRILL RECORD

Hole No. 1-3-81 Sheet No. 1

Property Intex
 Location Tully Twp.
 Latitude 13 + 00 E
 Departure 5 + 00 N
 Bearing Drilled S at 45°

Dip _____

 Total Footage _____

Elev. Collar _____
 Datum _____
 Date Started Mar 28 181
 Date Completed Mar 29 181
 Drilled by H. Carlson
 Logged by Dunage

Footage		Formation	Sample Number	Sample Footage	Sample Width	Gold Sample	Gold Sludge	Remarks
From	To							
0.0	21.0'	Casing						
21.0'	217.0'	Agglomeratic Luff. Medium grey to greenish-grey in colour. Fragments are small and not abundant and are erratically distributed in the core. Banding is evident @ $\approx 70^\circ$ to r/l, but is not pronounced. Some yellowish-green coatings on banding planes is probably epidote. Silicification in the form of white to grey quartz in bands, stringers and spots is more evident and numerous than in the first two holes. Minor, very	21	31.5'-37.0'	5.5'	Nil		
			22	84.0'-92.0'	8.0'	0.05		
			23	124.0'-129.0'	5.0'	0.005		
			24	129.0'-134.0'	5.0'	0.12		
			25	134.5'-139.5'	5.0'	0.39		
			26	139.5'-144.5'	5.0'	0.50		
			27	144.5'-150.0'	5.5'	0.32		
			43	150.0'-156.5'	6.5'	0.04		
			44	156.5'-160.0'	3.5'	0.02		
			45	175.0'-180.0'	5.0'	0.06		
			46	186.0'-191.0'	5.0'	0.12		

APK

DIAMOND DRILL RECORD

Hole No. 1-3-81 Sheet No. 2

Property Intex
 Location Tully twp.
 Latitude 13 + 00 E
 Departure 5 + 00 N
 Bearing Drilled S 45°

Dip

Total Footage _____

Elev. Collar _____
 Datum _____
 Date Started Mar 29 181
 Date Completed Mar 29 181
 Drilled by Dunges
 Logged by Dr. H.P. Carlson

Footage		Formation	Sample Number	Sample Footage	Sample Width	Gold Sample	Gold Sludge	Remarks
From	To							
		fine-grained, disseminated pyrite and carbonate grains in the section from 31.5' to 37.0'. Much quartz from 23.5' to 90.0' and from 124.5' to 150.0' (approx. 25% - 50%) but pyrite is barely visible and is less than 1%. Heavy limonitic staining as follows: 23.0' - 24.0', 26.5', 28.0', 31.5' - 37.0', 55.0', 52.0', 65.0', 73.5', 80.0', 84.0', 87.0', 87.5' - 91.5', 94.0' - 95.0', 103.0', 124.5', 129.5', 138.5', 157.5', 161.0', 175.0' - 176.0', 181.0', 183.0', 187.0' - 190.0'. End of hole.						

Date of Examination April 8, 1981.

[Signature]

DIAMOND DRILL RECORD

Hole No. 1-4-81 Sheet No. 1

Property Intex
 Location Tully Twp.
 Latitude 13 + 00 E
 Departure 5 + 00 N
 Bearing Drilled E 45°

Dip

Total Footage _____

Elev. Collar _____
 Datum _____
 Date Started March 30 1981
 Date Completed Mar 31 1981
 Drilled by Atkinson
 Logged by Dunfee

Footage		Formation	Sample Number	Sample Footage	Sample Width	Gold Sample	Gold Sludge	Remarks
From	To							
0.0'	17.0'	casing.						
17.0'	165.0'	Tully - Massive. Aphanitic. Medium to dark grey. May be a few small fragments present. Faint suggestions of banding which are not consistent to a/c. Variable silicification, more than in the first two holes, but much less than in the split sections in Hole #3. The silicification is more intense and consistent and shows more visible pyrite from 129.0' to 141.0', 145.5' to 156.5', and 159.0' to 164.5'. Heavy limonitic staining @ 18'-20', 22'-23', 47', 48.5', 64'-65.5', 68', 69.5'-74.0'.	28	17.0' - 23.0'	6.0'	0.002		
			29	89.0' - 94.0'	5.0'	nil		
			30	129.0' - 134.0'	5.0'	0.002		
			31	139.0' - 141.0'	7.0'	0.002	} 0.24 17.5	
			32	145.0' - 151.0'	6.0'	0.002		
			33	150.0' - 155.5'	4.5'	0.002		
			34	159.0' - 163.5'	4.5'	0.04		
			47	141.0' - 145.0'	4.0'	0.002		
			48	155.5' - 159.0'	3.5'	0.08		
			49	163.0' - 169.0'	6.0'	0.005		

APK

Date of Examination _____

DIAMOND DRILL RECORD

Hole No. 1-4-81 Sheet No. 2

Property Intex
 Location Tully Twp.
 Latitude 13 + 00 E
 Departure 5 + 00 N
 Bearing Drilled E 75°

Dip

Elev. Collar _____
 Datum _____
 Date Started Mar 30 1981
 Date Completed Mar 31 1981
 Drilled by Dungee
 Logged by Dr. H. D. Carlson

Total Footage _____

Footage		Formation	Sample Number	Sample Footage	Sample Width	Gold Sample	Gold Sludge	Remarks
From	To							
		<u>75.5'-78.5', 80'-81', 84.5', 87.5'-91', 97.5'-99', 101.5'-106', 108', 115', 120'- 121.5'</u>						
<u>165.0</u>	<u>207.0</u>	<u>Still massive, aphanitic tuff, but lighter in colour to medium greenish-grey, and the banding is more evident. Fairly heavy silicification @ 165.0'-167.0', 168.5', 187.0'-188.5', 197.0'-198.5', 205.5'.</u>						

JDC

Date of Examination April 8, 1981

DIAMOND DRILL RECORD

Hole No. 1-5-81 Sheet No. 1

Property Intex
 Location Tully Twp.
 Latitude 13 + 00 E
 Departure 5 + 00 N
 Bearing Drilled S 45° W at 45°

Dip

Total Footage _____

Elev. Collar _____
 Datum _____
 Date Started April 1, 1981
 Date Completed April 6, 1981
 Drilled by H. Carlsch. Dunace
 Logged by _____

Footage		Formation	Sample Number	Sample Footage	Sample Width	Gold Sample	Gold Sludge	Remarks
From	To							
0.0'	19.0'	Coding.						
19.0	351.0'	Tully, Massive, Aphanitic, light buff-grey to medium greenish-grey in colour. May be a few fragments present. Some minor suggestions of banding, but nothing consistent to c/a. Minor to moderate silicification most evident at following locations: 56'-57', 63.0', 64.0', 68.0', 72.5', 89.0', 92.0'; the following sections also show very minor white (<1%) and fine-grained carbonate crystals; 138.5'-148.5', 177.0'-188.0', 206.0'-211.5', and 214.5' to 233.0'. Watch the following	35	138.0'-143.0'	5.0'	nil		
			36	143.0'-148.0'	5.0'	0.002		
			37	177.0'-182.0'	5.0'	nil		
			38	182.0'-188.0'	6.0'	0.002		
			39	206.0'-211.0'	5.0'	0.09		
			40	214.0'-220.0'	6.0'	0.03		
			41	223.0'-229.0'	6.0'	0.13		
			42	229.0'-234.0'	5.0'	0.002		
			50	234.0'-238.0'	4.0'	0.03		
			66	211.0'-214.0'	3.0'	0.002		
			67	201.0'-206.0'	5.0'	0.002		

[Signature]

Date of Examination _____

DIAMOND DRILL RECORD

Hole No. 1-5-81 Sheet No. 2

Property Intex
 Location Tully top.
 Latitude 13 + 00 E
 Departure 5 + 00 N
 Bearing Drilled at S 45° W at 45°

Dip

Total Footage _____

Elev. Collar _____
 Datum _____
 Date Started April 1 1981
 Date Completed April 6 1981
 Drilled by Dunnace
 Logged by Dr. H. D. Carlson

Footage		Formation	Sample Number	Sample Footage	Sample Width	Gold Sample	Gold Sludge	Remarks
From	To							
		sections and locations in which some leucitization, alteration and silicification may be of interest, though no visible sulphides are evident: 166.0' - 169.0', 171.0', 175.0', 191.0', 192.0', 195.5' - 196.5', 213.0' - 214.0', 234.0' - 235.0', 240.0' - 241.0', 253.0' - 254.0', 257.0', 262.0', 276.0', 280.0', 247.5', 288.5', 289.5' - 291.5', 292.0', 293.5', 303.5' - 305.5', 344.0' - 347.5'. Heavy limonite staining @ 23.0' - 29.0', 39.0' - 40.5', 41.0' - 48.5', 50.5', 55.0', 155.5', 200.0', 215.0'. End-of-hole.						

Handwritten signature

Date of Examination April 8, 1981.

DIAMOND DRILL RECORD

Hole No. 1-6-81 Sheet No. 1

Property Intex
 Location Tully twp.
 Latitude 4 + 00 E
 Departure 2 + 00 N
 Bearing Drilled S 45°

Dip

Total Footage

Elev. Collar _____
 Datum _____
 Date Started April 7 181
 Date Completed April 10 181
 Drilled by H. Carlson
 Logged by Dunace

Footage		Formation	Sample Number	Sample Footage	Sample Width	Gold Sample	Gold Sludge	Remarks
From	To							
0.0'	38.0'	<u>Loading.</u>						
38.0'	277.0'	<u>Tuffaceous Agglomerate. Fragments from pinkish size up to roughly one inch in diameter. Matrix and fragments are aphanitic. Banding at roughly 70° to cleav, but in most sections is not pronounced. Ratio of fragments to matrix proportionately variable, and a few short sections (up to 18 inches long) may be massive tuff. May be minor graphite at about 175.0 feet. Much black, hard dense graphite from 192.0' to 194.0', some of it almost crystalline on</u>						

Handwritten signature

Date of Examination _____

DIAMOND DRILL RECORD

Hole No. 1-6-81 Sheet No. 2

Property Intex
 Location Tully Twp.
 Latitude 4 + 00 E
 Departure 2 + 00 N
 Bearing Drilled S 75°

Dip

Total Footage _____

Elev. Collar _____
 Datum _____
 Date Started April 7 1981
 Date Completed April 10 1981
 Drilled by Dungee
 Logged by H. P. Carlson

Footage		Formation	Sample Number	Sample Footage	Sample Width	Gold Sample	Gold Sludge	Remarks
From	To							
		the landing place.						
		Minor silicification in the form of bands and stringers of white to grey quartz up to 1 1/2 inches in thickness, most noticeable @ 56.5', and from 76.0' to 76.0'. Note heavy silicification @ about 189.0', 203.5', 208.5', 214.0', and from 256.0' to 259.0'.	51	131' - 137'	6.0'	0.002		
			52	137' - 143'	6.0'	0.002		
			53	143' - 149'	6.0'	Nil		
			54	167' - 173'	6.0'	0.002		
			55	173' - 178'	5.0'	0.002		
			56	186' - 192'	6.0'	0.002		
		Heavy limonitic staining @ 40.0' to 41.0', 45.5' - 46.0', 60.0' and 68.0'.	57	192' - 198.5'	6.5'	0.002		
		Sulphid mineralization as follows: only traces of pyrite seen in first 2 boxes; small splinter of pyrite seen at 125.8'.						

HP

Date of Examination _____

DIAMOND DRILL RECORD

Hole No. 1-6-81 Sheet No. 3

Property Intex
 Location Tully Twp.
 Latitude 4 + 00 E
 Departure 2 + 00 N
 Bearing Drilled S 45°

Dip

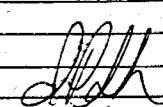
Total Footage _____

Elev. Collar _____
 Datum _____
 Date Started April 7 / 81
 Date Completed April 10 / 81
 Drilled by Dunqre
 Logged by Dr. H.D. Carlson

Footage		Formation	Sample Number	Sample Footage	Sample Width	Gold Sample	Gold Sludge	Remarks
From	To							
		<u>130.0' - 149.5' - pyrite more evident, roughly 1%, mostly very fine-grained, disseminated</u>						
		<u>167.0' - 178.5' - more pyrite (1% to 3%) and coarse-grained nodules up to 3/8" long.</u>	58	<u>202.0' - 209.0'</u>	<u>7.0'</u>	<u>0.002</u>		
			59	<u>209' - 215'</u>	<u>6.0'</u>	<u>Nil</u>		
			60	<u>215' - 222'</u>	<u>7.0'</u>	<u>Nil</u>		
		<u>186.0' - 199.0' - roughly 5% pyrite, with more than 50% at 195.0'</u>	61	<u>222' - 229'</u>	<u>7.0'</u>	<u>Nil</u>		
			62	<u>229' - 236'</u>	<u>7.0'</u>	<u>Nil</u>		
		<u>202.0' - 226.0' - roughly 3% to 5% pyrite.</u>	63	<u>236' - 243'</u>	<u>7.0'</u>	<u>Nil</u>		
		<u>226.0' - 248.0' - roughly 5% pyrite with more than 50% at 242.0'</u>	64	<u>243' - 248'</u>	<u>5.0'</u>	<u>Nil</u>		
		<u>256.0' - 260.0' - roughly 1% - 2% pyrite. Rocks vary in colour from dark to medium to light greenish grey, with fragments generally lighter than the matrix.</u>	65	<u>256' - 261'</u>	<u>5.0'</u>	<u>Nil</u>		

End of hole. (277')

Date of Examination April 14, 1981.



DIAMOND DRILL RECORD

Hole No. 1-7-81 Sheet No. 1

Property Intex
 Location Tully Twp.
 Latitude 41 + 50 E
 Departure + 400 W
 Bearing Drilled S at 45°

Dip

Total Footage

Elev. Collar _____
 Datum _____
 Date Started April 11 181
 Date Completed April 11 181
 Drilled by _____
 Logged by W. Carter Dunbar

Footage		Formation	Sample Number	Sample Footage	Sample Width	Gold Sample	Gold Sludge	Remarks
From	To							
0.0'	32.0'	Casing						
32.0'	207.0'	Agglomerate, tuff to tuffaceous agglomerate. Proportions of matrix to fragments variably variable down the hole. Both fragments and matrix are aphanitic. Fragments are from pinhead size up to one-half inch (1/2") in diameter, and some whitish ones may be silica rich. Banding is evident at roughly 70° to c/a, but is not pronounced. Colours vary from medium grey to light grey. Silicification in the form of spotted bands and veinlets up to 1/4"	68	60.0' - 67.0'	7.0'	Nil		
			69	67.0' - 73.0'	6.0'	Nil		
			70	73.0' - 78.0'	5.0'	Nil		
			71	78.0' - 88.0'	10.0'	Nil		
			72	110.0' - 117.0'	7.0'	0.005		
			73	117.0' - 127.0'	10.0'	0.005		
			74	131.0' - 137.0'	6.0'	0.005		
			75	137.0' - 143.0'	6.0'	0.04		
			76	182.0' - 187.0'	5.0'	0.005		
			77	192.0' - 197.0'	5.0'	Nil		
		78	197.0' - 203.0'	6.0'	0.02			

W. Carter

Date of Examination _____

DIAMOND DRILL RECORD

Hole No. 1-7-81 Sheet No. 2

Property Intex
 Location Tully Twp.
 Latitude 11 + 50 E
 Departure 4 + 00 N
 Bearing Drilled S at 45°

Dip

Total Footage _____

Elev. Collar _____
 Datum _____
 Date Started April 11 / 81
 Date Completed April 11 / 81
 Drilled by Dunqee
 Logged by Dr. H. D. Carlson

Footage		Formation	Sample Number	Sample Footage	Sample Width	Gold Sample	Gold Sludge	Remarks
From	To							
		mica, is common, but not abundant (roughly 1% to 2%). Very fine-grained pyrite is present, but not abundant (less than 1%) and is not readily seen. Heavy limonitic staining as follows: @ 32.5', 34.5'-36.0', 37.0'-39.5', 39.0'-40.0', 46.0'-47.0', 50.0'-52.0', 53.0', 54.0', 56.0'-57.0', 59.0'-67.0', 69.0'-70.0', 71.5', 72.5', 73.0', 79.5', 93.5'-94.0', 98.0'-98.5', 100.0'-100.5', 101.5'-102.0', 108.0'-110.0', 115.5', 124.0', 125.0', 126.0'-127.0', 133.0'-133.5', 152.0'-155.0', 163.0'-165.0'. Heavier silicification at 123.5' and	95	127.0'-131.0'	4.0'	0.01		
			96	143.0'-148.0'	4.0'	Nil		
			97	148.0'-157.0'	9.0'	Nil		

J.P.H.

DIAMOND DRILL RECORD

Hole No. 1-7-81 Sheet No. 3

Property Intex
 Location Tully Twp.
 Latitude 41° 50' E
 Departure 4 + 00 N
 Bearing Drilled S at 45°

Dip

Total Footage _____

Elev. Collar _____
 Datum _____
 Date Started April 11/81
 Date Completed April 11/81
 Drilled by Dunage
 Logged by Dr. H.D. Carlson

Footage		Formation	Sample Number	Sample Footage	Sample Width	Gold Sample	Gold Sludge	Remarks
From	To							
		generally in section from 131.0' to 142.0' quartz is from 2% to 3%; also in this section, pyrite is more evident and a little coarser-grained, may be more than 1%.						
		<u>End-of-hole (147.0')</u>						

Date of Examination April 18th, 1981

[Handwritten Signature]

DIAMOND DRILL RECORD

Hole No. 1-9-81 Sheet No. 1

Property Inter
 Location Tully twp.
 Latitude 12 + 00 E
 Departure 16 + 00 N
 Bearing Drilled N 45°

Dip

Total Footage _____

Elev. Collar _____
 Datum _____
 Date Started April 17 181
 Date Completed April 20 181
 Drilled by _____
 Logged by [Signature]

Footage		Formation	Sample Number	Sample Footage	Sample Width	Gold Sample	Gold Sludge	Remarks
From	To							
0-0'	5-0'	Casing.						
5-0'	317-0'	Tuff. Massive. Medium to dark green in colour. Aphanitic. Slight evidence of bending @ 30' to 70' top/a but becoming progressively more evident down the core @ 70' to c/a. Only very minor (<<< 1% pyrite) sulphides, very fine-grained, and erratically distributed down the core. More general silicification is evident than in all previous holes, (except S.D.H. #3) in the forms of bands, stringers, splashes, veinlets, pods and no more in breccia matrix. Most evident at	87	180'-230'	5-0'	Nil		
			88	260'-320'	4-0'	Nil		
			89	315'-360'	4-5'	0.002		
			90	490'-530'	4-0'	Nil		
			91	620'-650'	3-0'	Nil		
			92	177'-183'	6-0'	Nil		
			93	1840'-1880'	4-0'	Nil		
			94	2800'-2850'	5-0'	Nil		

[Signature]

Date of Examination April 26/81.

DIAMOND DRILL RECORD

Hole No. F-9-81 Sheet No. 2

Property Intex
 Location Tully Twp.
 Latitude 12 + 00 E
 Departure 16 + 00 N
 Bearing Drilled N 45°

Dip

 Total Footage _____

Elev. Collar _____
 Datum _____
 Date Started April 17 / 81
 Date Completed April 20 / 81
 Drilled by _____
 Logged by [Signature]

Footage		Formation	Sample Number	Sample Footage	Sample Width	Gold Sample	Gold Sludge	Remarks
From	To							
		@ 18.0' (50%), 22.0' (15.0%), 22.0'-23.0' (30%),						
		26.0'-27.0' (20%), 27.5'-28.5' (65%),						
		including 6" pure white quartz vein,						
		31.0' (30%), 32.0'-35.0' (75%, including 18"						
		pure white quartz vein), 36.0' (40%), 42.0' (20%),						
		43.0' (10%), 48.0'-50.0' (15%), 51.5' (15%), 55.0'						
		to 56.0' (30%), 60.5' (50%), 87.0'-88.0'						
		(50%), 103.0' (50%), 119.0' (75%), 122.0'						
		(30%), 125.0' (40%), 146.0' (20%), 152.0'						
		(40%), 162.0'-164.0' (15%), 172.0'-173.0'						
		(10%), 177.5'-178.5' (25%), 181.5'-182.5'						
		(25%), 184.0'-188.0' (20%), 197.0' (2" stringer),						
		214.0' (25%), 221.0' (25%), 225.0' (85%),						
		229.5' (1" quartz stringer), 233.5'-234.5'						

[Signature]

Date of Examination April 26 / 81

RECEIVED JUN 29 1981

DIAMOND DRILL RECORD

Hole No. 1-10-81 Sheet No. 1

Property Intex
 Location Tully twp.
 Latitude 40 + 00 E
 Departure 7 + 00 S
 Bearing Drilled N 45°

Dip _____

 Total Footage 346.0'

Elev. Collar _____
 Datum _____
 Date Started April 21 181
 Date Completed May 27 181
 Drilled by Dunqce
 Logged by H. Carlson

Footage		Formation	Sample Number	Sample Footage	Sample Width	Gold Sample	Gold Sludge	Remarks
From	To							
0.0	121.0'	Casing.						
121.0'	273.5'	Basalt. Dark grey to black in colour. Aphanitic to very fine-grained. Massive. Evidence of fracturing, probably blocky when drilled, though core recovery high. Very minor alteration on fracture planes with talc, quartz, carbonate, serpentinite-chlorite and tremolite-actinolite evident in variable proportions. Few black veinlets up to 1/8" in width may be diabase dikes. Iron-pyrite particularly evident @ 234'.	101	317' - 327'	10.0'	Nil		
273.5'	346.0'	Andesitic flow rock? Dark medium-grey to light medium-grey in colour.						

J.P.H.

Date of Examination _____

DIAMOND DRILL RECORD

Hole No. 1-10-81 Sheet No. 2

Property Intex
 Location Tully twp.
 Latitude 40 + 00 E
 Departure 2 + 00 S
 Bearing Drilled N 45°

Dip

Total Footage _____

Elev. Collar _____
 Datum _____
 Date Started April 21 181
 Date Completed May 27 181
 Drilled by Dungee
 Logged by Dr. H. D. Carlson

Footage		Formation	Sample Number	Sample Footage	Sample Width	Gold Sample	Gold Sludge	Remarks
From	To							
		Coarser-grained than basalt unit above. Good deal of fine-grained speckiness, some spots white, some dark (phenocrysts or alteration products?). More fracturing and incipient brecciation and shearing than in basalt unit above; also more alteration products present - quartz, talc, carbonate, chlorite-serpentine, epidote and tremolite-actinolite. Very minor glauconitic pyrite on dip planes @ 284'. Roughly 7' of ground core and not rec'd between 337.5' and 346.0'. End-of-hole.						

Handwritten signature

Date of Examination _____

DIAMOND DRILL RECORD

Hole No. 1-11-81 Sheet No. 1

Property Intex
 Location Tully Twp.
 Latitude 4 + 00 E
 Departure 4 + 00 S
 Bearing Drilled N 45°

Dip

 Total Footage 353.0'

Elev. Collar _____
 Datum _____
 Date Started May 28 1981
 Date Completed May 31 1981
 Drilled by Dungee
 Logged by Dr. H. P. Carlson

Footage		Formation	Sample Number	Sample Footage	Sample Width	Gold Sample	Gold Sludge	Remarks
From	To							
0.0	81.0'	Casing.						
81.0'	227.5'	Andesitic flow rock (?). Similar to lower end of material in Hole #1-10-81. Fine-grained, massive, medium-gray to lighter-greenish-gray in colour. Considerable fracturing and incipient brecciation (but less than in Hole #10), with fracture planes and pores filled with black material, probably mainly chlorite, with lesser amounts of carbonate, quartz, epidote, etc. From 137.0' to 147.0' only 3 ft of ground core recovered. From 157.0' to 158.0' rock is black and						

HP

DIAMOND DRILL RECORD

Hole No. 1-11-81 Sheet No. 2

Property Intex
 Location Tully Twp.
 Latitude 4 + 00 E
 Departure 4 + 00 S
 Bearing Drilled N 45°

Dip

Total Footage _____

Elev. Collar _____
 Datum _____
 Date Started May 28 / 81
 Date Completed May 31 / 81
 Drilled by Dunace
 Logged by Dr. H. D. Carlson

Footage		Formation	Sample Number	Sample Footage	Sample Width	Gold Sample	Gold Sludge	Remarks
From	To							
		dense-looking and has minor (<1%)						
		diss. pyrite. No graphite.	102	222'-227.5'	5.5'	Nil		
		Suggestions of incipient shearing @	103	227.5'-232'	4.5'	Nil		
		172.5' and from 180.0' to 181.5'	104	232'-236'	4'	Nil		
		From 222.0' to 227.5' much fine-grained	105	236'-242'	6'	Nil		
		pyrite (1%-2%) in blobs, stringers	106	242'-247'	5'	Nil		
		and diss. grains.	107	247'-248.5'	1.5'	Nil		
227.5'	247.0'	Sulphide - Graphite Zone. Pyrite with	108	248.5'-253.5'	5'	Nil		
		minor amounts of arsenopyrite. latter	109	253.5'-257.5'	4'	Nil		
		in very fine-grained silvery nodules.	110	257.5'-261.5'	4'	Nil		
		Pyrite is coarse to very fine-grained,	111	261.5'-267'	5.5'	Nil		
		and occurs in massive blobs to thickly	112	267'-272'	5'	Nil		
		diss. discrete grains. Host rock	113	272'-277'	5'	Nil		
		appears to be the unit described above						

H.D.C.

DIAMOND DRILL RECORD

Hole No. 1-11-81 Sheet No. 3

Property Intex
 Location Tully Twp.
 Latitude 4 + 00 E
 Departure 4 + 00 S
 Bearing Drilled N 45°

Dip

Total Footage _____

Elev. Collar _____
 Datum _____
 Date Started May 28 181
 Date Completed May 31 181
 Drilled by Dungee
 Logged by Dr. H. D. Carlson

Footage		Formation	Sample Number	Sample Footage	Sample Width	Gold Sample	Gold Sludge	Remarks
From	To							
		but difficult to be certain.						
		Mineralization as follows:						
		227.5' - 234.0' - > 50% pyrite, no aspy. recognized	114	277 - 282	5'	Nil		
		234.5' - 236.0' - > 50% pyrite, " " "	115	316 - 322.5	6.5'	0.12		
		at 236.0' black matrix is graphitic.	116	311 - 316	5'	Nil		
		236.0' - 242.0' - 25% - 35% pyrite, no aspy. recognized.	117	322.5 - 327.5	5'	0.002		
		242.0' - 247.0' - ~ 10% pyrite, no aspy. recognized.						
247.0'	248.5'	Anchorite unit, as described above. Contains 2-3% pyrite in stringy disseminations. Contacts with sulphide-graphite zone at 16° - 20° to s.p.						
248.5	287.0	Sulphide-graphite zone, as above. Mineralization, as follows:						

APK

Date of Examination _____

DIAMOND DRILL RECORD

Hole No. 1-11-81 Sheet No. 4

Property Intex
 Location Tully Twp.
 Latitude 4 + 00 E
 Departure 4 + 00 S
 Bearing Drilled N 45°

Dip

Total Footage _____

Elev. Collar _____
 Datum _____
 Date Started May 28 / 81
 Date Completed May 31 / 81
 Drilled by Dunage
 Logged by Dr. H.D. Carlson

Footage		Formation	Sample Number	Sample Footage	Sample Width	Gold Sample	Gold Sludge	Remarks
From	To							
		248.5-257.5 - ~10-15% py. No assay recognized.						
		257.5-261.5 - >50% <75% py. " " "						
		261.5-267.0 - 25% - 35% py. " " "						
		267.0-272.0 - 10% - 15% py. " " "						
		272.0-277.0 - ~10% py. Assay (?) @ ~273'						
		277.0-282.0 - 5-10% py. Maybe Assay @ 277'						
		282.0-287.0 - ~5% py. No assay recognized.						
287.0	353.0	Andesitic flow unit, as previously described. 10% - 15% pyrite from 292.0' to 293.5'. Less fracturing, incipient brecciation and chlorite alteration than in andesite unit first described. From 317.0' to 322.5' the rock has been mildly silicified, contains 5-10% pyrite.						

Handwritten signature

Date of Examination _____

DIAMOND DRILL RECORD

Hole No. 1-12-81 Sheet No. 1

Property Intex
 Location Tully Twp.
 Latitude 36 + 00 E
 Departure 3 + 00 S
 Bearing Drilled at N 45°

Dip

Total Footage

Elev. Collar _____
 Datum _____
 Date Started June 1 / 81
 Date Completed June 5 / 81
 Drilled by Dunbar
 Logged by Dr. H.D. Carlson

Footage		Formation	Sample Number	Sample Footage	Sample Width	Gold Sample	Gold Sludge	Remarks
From	To							
0-0	81.0'	Casing						
81.0'	327.0'	Dark greenish-grey to black, very fine-grained, massive mafic lava flow (andesite-basalt). Considerably fractured and core blocky, though the recovery is pretty good. Slightly to moderately altered, along fracture planes with quartz, carbonate, chlorite-serpentine, epidote and tremolite-actinolite present. Traces of very finely-divided pyrite seen at 117.0'. An 8" quartz-carbonate vein at 105.0'. At about 220' the alteration becomes	118	256-260	4'	Nil		
			119	260-265	5'	Nil		
			120	265-269	4'	0.06		

Handwritten signature

Date of Examination _____

DIAMOND DRILL RECORD

Hole No. 1-14-81 Sheet No. 1

Property Intex
 Location Tully Twp.
 Latitude S 6 + 50 E
 Departure 2 + 50 S
 Bearing Dip 112 N 45°

Dip

.....

 Total Footage.....

Elev. Collar.....
 Datum.....
 Date Started June 15 / 81
 Date Completed June 20 / 81
 Drilled by Adrian Dungee
 Logged by Adrian Dungee

Footage		Formation	Sample Number	Sample Footage	Sample Width	Gold Sample	Gold Sludge	Remarks
From	To							
0.0	87.0	Casing.						
87.0	244.5	Major-Intermediate volcanic flow (andesite?). Dark-med. green-grey in colour. Massive. Aphanitic to very f.g. Much incipient shearing and brecciation, with development of talc along fracture and shear planes. Core locally ground considerably, but recovery good, except from 115' to 124' where only 4.0' recovered. No visible sulphides. Narrow bull quartz veins @ 103' and 124'. Shear planes resemble tuffaceous banding in places. Quartz stringers & veins (25%) from 220' to 224'. Core much brecciated, sheared, altered to talc and badly ground. Only 6.5' of ground core.						
244.5	257.0							

AD

Date of Examination.....

DIAMOND DRILL RECORD

Hole No. 1-14-81 Sheet No. 2

Property Intex
 Location Tully Twp.
 Latitude 5° + 50' E
 Departure 2 + 50' S
 Bearing Drilled W 45°

Dip

Total Footage _____

Elev. Collar _____
 Datum _____
 Date Started June 15 1981
 Date Completed June 20 1981
 Drilled by Dunage
 Logged by Dr. H. D. Carlson

Footage		Formation	Sample Number	Sample Footage	Sample Width	Gold Sample	Gold Sludge	Remarks
From	To							
		recovered here. May be fault zone.						
257.0	293.0	Basalt (?) Darker in colour, more massive, fine-grained, and less brecciated, sheared & altered than first unit described. Fine-grained, recognizable pyrite (~1%) diss. thro' the core. Also very, very, f. g. sulphides diss. erratically, some may be acicular arsenopyrite, but too fine for positive ident. <u>Note</u> - maybe aphanitic diabase dike from 287.0 to 293.0.	121	257' - 262'	5.0'	Nil		
			122	262' - 267'	5.0'	Nil		
			123	267' - 272'	5.0'	Nil		
			124	272' - 277'	5.0'	0.01		
			125	277' - 282'	5.0'	0.002		
			126	282' - 287'	5.0'	0.005		
			127	287' - 293'	6.0'	0.002		
293.0	302.0	Maybe basalt as above, but shows more incipient brecciation, shearing and moderate silicification.						
		End of hole.						

Handwritten signature

Date of Examination _____

DIAMOND DRILL RECORD

Hole No. 1-15-81 Sheet No. 1

Property Intex
 Location Tully twp.
 Latitude 76 + 00 E
 Departure 6 + 25 S
 Bearing Drilled N 45°

Dip

.....

 Total Footage.....

Elev. Collar.....
 Datum.....
 Date Started June 22 / 81
 Date Completed June 28 / 81
 Drilled by H. D. Carlson
 Logged by Dunger

Footage		Formation	Sample Number	Sample Footage	Sample Width	Gold Sample	Gold Sludge	Remarks
From	To							
0.0	174.0	Casing.						
174.0	406.0	Intermediate - major lava flow (andesite?) Dark to medium greenish-grey in colour. Fine-grained to aphanitic. Massive. In places mottled with mixture of dark and light spots, which may be porphyritic texture. Minor to modest amounts of rock alteration in the form of stringers and veinlets, from $\frac{1}{8}$ " up to 1" in thickness, at all angles to s/c, consisting of talc, carbonate, chlorite, tremolite-actinolite, serpentine (?) and epidote (?)						Sulphide mineralization as follows: $\frac{1}{8}$ " stringer containing 50% pyrite @ 380' " " " " " " 381.5' " " " " " " 384' " " " " " " 385.5' " " " " " " 388' " " " " " " 394'
			129	379.5 - 383.5	4'	Nil		
			129	383.5 - 387.5	4'	Nil		
			130	387.5 - 390.5	3'	Nil		
			131	390.5 - 394.5	4'	Nil		
		END OF HOLE						

Date of Examination.....

Handwritten signature

DIAMOND DRILL RECORD

Hole No. 1-16-81 Sheet No. 1

Property Intex
 Location Tully twp.
 Latitude _____
 Departure _____
 Bearing _____

Dip

 Total Footage _____

Elev. Collar _____
 Datum _____
 Date Started _____
 Date Completed _____
 Drilled by _____
 Logged by H. Carlson

Footage		Formation	Sample Number	Sample Footage	Sample Width	Gold Sample	Gold Sludge	Remarks
From	To							
0.0	134.0	Casing.						
134.0	464.0	Mixed diabase (basalt?) and andesite; diabase (basalt?) is black, hard, dense, uniform, aphanitic to very fine-grained, non-conductive; a little talc-chlorite carbonate-epidote alteration along fracture planes @ $\approx 45^\circ$ to c/a. Andesite is dark to medium grey in colour, very fine-grained, massive, some slight dark and light mottling suggests porphyritic texture. "Chicken track" texture @ 167', 183.5', and 277'-279'. Fibrous mineral @ 219' (chrysotile?, tremolite?). Some black shiny						

H. Carlson

Date of Examination _____

DIAMOND DRILL RECORD

Hole No. 1-16-81 Sheet No. 2

Property Intex
 Location Tully Twp.
 Latitude _____
 Departure _____
 Bearing _____

Dip

 Total Footage _____

Elev. Collar _____
 Datum _____
 Date Started _____
 Date Completed _____
 Drilled by _____
 Logged by _____

Footage		Formation	Sample Number	Sample Footage	Sample Width	Gold Sample	Gold Sludge	Remarks
From	To							
		<p>graphite on slip planes in andesite @ 217.5'. Locally andesite is considerably fractured and brecciated with fracture planes filled with black chlorite (+ some graphite?), tremolite- actinolite, carbonate, etc. (also may be some clivase). Contacts between two rock types tend to be diffuse and not sharp. No visible sulphides in either.</p> <p>Can considerably ground locally, as follows:</p> <p>137' - 147' (2' lost) 187' - 217' (5' lost, most between</p>						

APK

Date of Examination _____

DIAMOND DRILL RECORD

Hole No. 1-16-81 Sheet No. 3

Property Intex
 Location Tully twp.
 Latitude _____
 Departure _____
 Bearing _____

Dip

 Total Footage _____

Elev. Collar _____
 Datum _____
 Date Started _____
 Date Completed _____
 Drilled by _____
 Logged by _____

Footage		Formation	Sample Number	Sample Footage	Sample Width	Gold Sample	Gold Sludge	Remarks
From	To							
		(193.5' to 196' and 212' to 217')						
		217' - 227' (7' lost)						
		297' - 307' (7.5' lost)						
		327' - 337' (3' lost)						
		337' - 347' (1.5' lost)						
		357' - 367' (1.0' lost)						
		377' - 387' (4.5' lost)						
		387' - 397' (8" lost)						
		397' - 407' (6" lost)						
		427' - 437' (4' lost)						
		452' - 456' (4' lost)						
		Hole seemed to follow roughly along contact between volcanics and a diabase dike.						

End-of-hole @ 464.0'

Date of Examination _____

J.P.H.



SWASTIKA LABORATORIES LIMITED

P.O. BOX 10, SWASTIKA, ONTARIO P0K 1T0

TELEPHONE: (705) 642-3244

ANALYTICAL CHEMISTS • ASSAYERS • CONSULTANTS

Certificate of Analysis

RECEIVED MAR 24 1981

Certificate No. 51099

Date: March 24 1981

Received Mar. 23/81 6 Samples of Split Core

Submitted by Intex Mining, Toronto, Ontario Per: Mr. P. Roby

SAMPLE NO.	GOLD Oz./ton
1	0.002
2	0.002
3	Nil
4	Nil
5	Nil
6	Nil

PRD

Per *G. Lebel*
G. Lebel - Manager



SWASTIKA LABORATORIES LIMITED

P.O. BOX 10, SWASTIKA, ONTARIO P0K 1T0
TELEPHONE: (705) 642-3244
ANALYTICAL CHEMISTS • ASSAYERS • CONSULTANTS

Certificate of Analysis

RECEIVED APR 2 1981

Certificate No. 51122

Date: March 30, 1981

Received March 25, 1981 3 Samples of split core

Submitted by Intex Mining Limited, Toronto, Ontario Att: J.P. Sheridan

SAMPLE NO.	GOLD Oz./ton
7	0.002
8	NIL
9	0.002

Alk

Per *G. Lebel*
G. Lebel, Manager



SWASTIKA LABORATORIES LIMITED

P.O. BOX 10, SWASTIKA, ONTARIO POK 1T0

TELEPHONE: (705) 642-3244

ANALYTICAL CHEMISTS • ASSAYERS • CONSULTANTS

Certificate of Analysis

RECEIVED APR 9 1981

Certificate No. 51160

Date: April 6, 1981

Received March 30, 1981 11 Samples of split core

Submitted by Intex Mining Limited, Toronto, Ontario Att: J.P. Sheridan

SAMPLE NO.	GOLD Oz./ton
<u>HOLE #2</u>	
10	NIL
11	NIL
12	NIL
13	NIL
14	NIL
15	NIL
16	NIL
17	0.005
18	NIL
19	NIL
20	NIL

Per G. Lebel
G. Lebel, Manager



SWASTIKA LABORATORIES LIMITED

P.O. BOX 10, SWASTIKA, ONTARIO P0K 1T0

TELEPHONE: (705) 642-3244

ANALYTICAL CHEMISTS • ASSAYERS • CONSULTANTS

Certificate of Analysis

RECEIVED APR 9 1981

Certificate No. 51177

Date: April 7, 1981

Received April 1, 1981 7 Samples of split core

Submitted by Intex Mining, Toronto, Ontario Att: J.P. Sheridan

SAMPLE NO.	GOLD Oz./ton
21	NIL
22	0.05
23	0.005
24	0.22
25	0.39
26	0.30
27	0.32

Per G. Lebel
G. Lebel, Manager



SWASTIKA LABORATORIES LIMITED

P.O. BOX 10, SWASTIKA, ONTARIO POK 1T0
TELEPHONE: (705) 642-3244
ANALYTICAL CHEMISTS • ASSAYERS • CONSULTANTS

Certificate of Analysis

RECEIVED APR 13 1981

Certificate No. 51177-A

Date: April 10, 1981

Received April 1, 1981 4 Samples of split core

Submitted by Intex Mining Limited, Toronto, Ontario

Att: J.P. Sheridan

SAMPLE NO.	SILVER Oz./ton
24	0.01
25	0.01
26	trace
27	0.01

Per G. Lebel
G. Lebel, Manager



SWASTIKA LABORATORIES LIMITED

P.O. BOX 10, SWASTIKA, ONTARIO P0K 1T0
TELEPHONE: (705) 642-3244
ANALYTICAL CHEMISTS • ASSAYERS • CONSULTANTS

Certificate of Analysis

RECEIVED 10 APR 1981

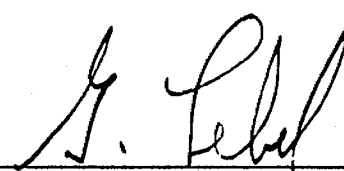
Certificate No. 51183

Date: April 9, 1981

Received April 2, 1981 7 Samples of split core

Submitted by Intex Mining Limited, Toronto, Ontario

SAMPLE NO.	GOLD Oz./ton
<u>HOLE #4</u>	
28	0.002
29	NIL
30	0.002
31	0.25
32	0.26
33	0.20
34	0.04

Per 

G. Lebel, Manager



SWASTIKA LABORATORIES LIMITED

P.O. BOX 10, SWASTIKA, ONTARIO P0K 1T0

TELEPHONE: (705) 642-3244

ANALYTICAL CHEMISTS • ASSAYERS • CONSULTANTS

Certificate of Analysis

RECEIVED APR 16 1981

Certificate No. 51204

Date: April 13, 1981

Received April 7, 1981 8 Samples of split core

Submitted by Intex Mining Limited, Toronto, Ontario

Att: J.P. Sheridan

SAMPLE NO.	GOLD Oz./ton
<u>HOLE #5</u>	
35	NIL
36	0.002
37	NIL
38	0.002
39	0.09
40	0.03
41	0.13
42	0.002

J.P.S.

Per *G. Lebel*
G. Lebel, Manager



SWASTIKA LABORATORIES LIMITED

P.O. BOX 10, SWASTIKA, ONTARIO P0K 1T0

TELEPHONE: (705) 642-3244

ANALYTICAL CHEMISTS • ASSAYERS • CONSULTANTS

Certificate of Analysis

RECEIVED APR 15 1981

Certificate No. 51212

Date: April 15, 1981

Received April 8, 1981 2 Samples of split core

Submitted by Intex Mining Limited, Toronto, Ontario

SAMPLE NO.	GOLD Oz./ton
------------	-----------------

HOLE #3

43 0.04

44 0.02

Per G. Lebel
G. Lebel, Manager



SWASTIKA LABORATORIES LIMITED

P.O. BOX 10, SWASTIKA, ONTARIO POK 1T0

TELEPHONE: (705) 642-3244

ANALYTICAL CHEMISTS • ASSAYERS • CONSULTANTS

Certificate of Analysis

RECEIVED AT [unclear]

Certificate No. 51223

Date: April 20, 1981

Received April 10, 1981 6 Samples of split core

Submitted by Intex Mining Limited, Toronto, Ontario Att: J.P. Sheridan

SAMPLE NO.	GOLD Oz./ton
<u>HOLE #3</u>	
45	0.06
46	0.12
<u>HOLE #4</u>	
47	0.12
48	0.08
49	0.005
<u>HOLE #5</u>	
50	0.03

J.P.S.

Per *G. Lebel*
G. Lebel, Manager



SWASTIKA LABORATORIES LIMITED

P.O. BOX 10, SWASTIKA, ONTARIO P0K 1T0

TELEPHONE: (705) 642-3244

ANALYTICAL CHEMISTS • ASSAYERS • CONSULTANTS

Certificate of Analysis

RECEIVED APR 27 1981

Certificate No. 51248

Date: April 23, 1981

Received April 14, 1981 15 Samples of split core

Submitted by Intex Mining Limited, Toronto, Ontario Per: P. Roby

SAMPLE NO. GOLD
Oz./ton

HOLE #6

51	0.002
52	0.002
53	NIL
54	0.002
55	0.002
56	0.002
57	0.002
58	0.002
59	NIL
60	NIL
61	NIL
62	NIL
63	NIL
64	NIL
65	NIL

Per G. Lebel
G. Lebel, Manager



SWASTIKA LABORATORIES LIMITED

P.O. BOX 10, SWASTIKA, ONTARIO POK 1T0
TELEPHONE: (705) 642-3244
ANALYTICAL CHEMISTS • ASSAYERS • CONSULTANTS

Certificate of Analysis

RECEIVED APR 24 1981

Certificate No. 51259

Date: April 24, 1981

Received April 16, 1981 21 Samples of split core

Submitted by Intex Mining Limited, Toronto, Ontario Att: J.P. Sheridan

SAMPLE NO. GOLD
Oz./ton

HOLE #5

66 0.002
67 0.002

HOLE #7

68 NIL
69 NIL
70 NIL
71 NIL
72 0.005
73 0.005
74 0.07
75 0.04
76 0.005
77 NIL
78 0.02

HOLE #8

79 NIL
80 0.002
81 0.005
82 0.12
83 0.04
84 NIL
85 0.05
86 0.002

Handwritten notes:
Hole 9
87
88
89
90
91
92
93
94
95
96
97
98
99
100
101
102
103
104
105
106
107
108
109
110
111
112
113
114
115
116
117
118
119
120
121
122
123
124
125
126
127
128
129
130
131
132
133
134
135
136
137
138
139
140
141
142
143
144
145
146
147
148
149
150
151
152
153
154
155
156
157
158
159
160
161
162
163
164
165
166
167
168
169
170
171
172
173
174
175
176
177
178
179
180
181
182
183
184
185
186
187
188
189
190
191
192
193
194
195
196
197
198
199
200
201
202
203
204
205
206
207
208
209
210
211
212
213
214
215
216
217
218
219
220
221
222
223
224
225
226
227
228
229
230
231
232
233
234
235
236
237
238
239
240
241
242
243
244
245
246
247
248
249
250
251
252
253
254
255
256
257
258
259
260
261
262
263
264
265
266
267
268
269
270
271
272
273
274
275
276
277
278
279
280
281
282
283
284
285
286
287
288
289
290
291
292
293
294
295
296
297
298
299
300
301
302
303
304
305
306
307
308
309
310
311
312
313
314
315
316
317
318
319
320
321
322
323
324
325
326
327
328
329
330
331
332
333
334
335
336
337
338
339
340
341
342
343
344
345
346
347
348
349
350
351
352
353
354
355
356
357
358
359
360
361
362
363
364
365
366
367
368
369
370
371
372
373
374
375
376
377
378
379
380
381
382
383
384
385
386
387
388
389
390
391
392
393
394
395
396
397
398
399
400
401
402
403
404
405
406
407
408
409
410
411
412
413
414
415
416
417
418
419
420
421
422
423
424
425
426
427
428
429
430
431
432
433
434
435
436
437
438
439
440
441
442
443
444
445
446
447
448
449
450
451
452
453
454
455
456
457
458
459
460
461
462
463
464
465
466
467
468
469
470
471
472
473
474
475
476
477
478
479
480
481
482
483
484
485
486
487
488
489
490
491
492
493
494
495
496
497
498
499
500
501
502
503
504
505
506
507
508
509
510
511
512
513
514
515
516
517
518
519
520
521
522
523
524
525
526
527
528
529
530
531
532
533
534
535
536
537
538
539
540
541
542
543
544
545
546
547
548
549
550
551
552
553
554
555
556
557
558
559
560
561
562
563
564
565
566
567
568
569
570
571
572
573
574
575
576
577
578
579
580
581
582
583
584
585
586
587
588
589
590
591
592
593
594
595
596
597
598
599
600
601
602
603
604
605
606
607
608
609
610
611
612
613
614
615
616
617
618
619
620
621
622
623
624
625
626
627
628
629
630
631
632
633
634
635
636
637
638
639
640
641
642
643
644
645
646
647
648
649
650
651
652
653
654
655
656
657
658
659
660
661
662
663
664
665
666
667
668
669
670
671
672
673
674
675
676
677
678
679
680
681
682
683
684
685
686
687
688
689
690
691
692
693
694
695
696
697
698
699
700
701
702
703
704
705
706
707
708
709
710
711
712
713
714
715
716
717
718
719
720
721
722
723
724
725
726
727
728
729
730
731
732
733
734
735
736
737
738
739
740
741
742
743
744
745
746
747
748
749
750
751
752
753
754
755
756
757
758
759
760
761
762
763
764
765
766
767
768
769
770
771
772
773
774
775
776
777
778
779
780
781
782
783
784
785
786
787
788
789
790
791
792
793
794
795
796
797
798
799
800
801
802
803
804
805
806
807
808
809
810
811
812
813
814
815
816
817
818
819
820
821
822
823
824
825
826
827
828
829
830
831
832
833
834
835
836
837
838
839
840
841
842
843
844
845
846
847
848
849
850
851
852
853
854
855
856
857
858
859
860
861
862
863
864
865
866
867
868
869
870
871
872
873
874
875
876
877
878
879
880
881
882
883
884
885
886
887
888
889
890
891
892
893
894
895
896
897
898
899
900
901
902
903
904
905
906
907
908
909
910
911
912
913
914
915
916
917
918
919
920
921
922
923
924
925
926
927
928
929
930
931
932
933
934
935
936
937
938
939
940
941
942
943
944
945
946
947
948
949
950
951
952
953
954
955
956
957
958
959
960
961
962
963
964
965
966
967
968
969
970
971
972
973
974
975
976
977
978
979
980
981
982
983
984
985
986
987
988
989
990
991
992
993
994
995
996
997
998
999
1000

Handwritten signature

Per G. Lebel
G. Lebel, Manager



SWASTIKA LABORATORIES LIMITED

P.O. BOX 10, SWASTIKA, ONTARIO P0K 1T0

TELEPHONE: (705) 642-3244

ANALYTICAL CHEMISTS • ASSAYERS • CONSULTANTS

Certificate of Analysis

REC'D [unclear] 1981

Certificate No. 51281

Date: April 29, 1981

Received Apr. 24, 1981 8 Samples of split core

Submitted by Intex Mining Limited, Toronto, Ontario Per: P. ROBY

SAMPLE NO.	GOLD Oz./ton
<u>HOLE #9</u>	
87	NIL
88	NIL
89	0.002
90	NIL
91	NIL
92	NIL
93	NIL
94	NIL

[Handwritten initials]

Per *G. Lebel*
G. Lebel, Manager



SWASTIKA LABORATORIES LIMITED

P.O. BOX 10, SWASTIKA, ONTARIO P0K 1T0

TELEPHONE: (705) 642-3244

ANALYTICAL CHEMISTS • ASSAYERS • CONSULTANTS

Certificate of Analysis

RECEIVED MAY 11 1981

Certificate No. 51310

Date: May 6 1981

Received May 1/81 6 Samples of Split Core

Submitted by Intex Mining Limited, Toronto, Ontario

SAMPLE NO.	GOLD Oz./ton
<u>Hole #7</u>	
95	0.01
96	Nil
97	Nil
<u>Hole #8</u>	
98	Nil
99	Nil
100	Nil

Alk

Per *G. Lebel*

G. Lebel - Manager



SWASTIKA LABORATORIES LIMITED

P.O. BOX 10, SWASTIKA, ONTARIO P0K 1T0

TELEPHONE: (705) 642-3244

ANALYTICAL CHEMISTS • ASSAYERS • CONSULTANTS

Certificate of Analysis

Certificate No. 51508

Date: June 8 1981

Received June 3/81 15 Samples of Split Core

Submitted by Intex Mining Limited, Toronto, Ontario

SAMPLE NO.	GOLD Oz./ton
101	Nil
102	Nil
103	Nil
104	Nil
105	Nil
106	Nil
107	Nil
108	Nil
109	Nil
110	Nil
111	Nil
112	Nil
113	Nil
114	Nil
115	0.12

Per G. Lebel
G. Lebel - Manager

1981 1 1 1000 0000000000



SWASTIKA LABORATORIES LIMITED

P.O. BOX 10, SWASTIKA, ONTARIO P0K 1T0

TELEPHONE: (705) 642-3244

ANALYTICAL CHEMISTS • ASSAYERS • CONSULTANTS

Certificate of Analysis

Certificate No. 51555

Date: June 11, 1981

Received June 8, 1981 2 Samples of split core

Submitted by Intex Mining Limited, Toronto, Ontario Per: P. Roby

SAMPLE NO.	GOLD Oz./ton
116	NIL
117	0.002

Per G. Lebel

G. Lebel, Manager



SWASTIKA LABORATORIES LIMITED

P.O. BOX 10, SWASTIKA, ONTARIO POK 1T0

TELEPHONE: (705) 642-3244

ANALYTICAL CHEMISTS • ASSAYERS • CONSULTANTS

Certificate of Analysis

Certificate No. 51622

Date: June 25, 1981

Received June 17, 1981 3 Samples of split core

Submitted by Intex Mining Limited, Toronto, Ontario

Att: J.P. Sheridan

SAMPLE NO.	GOLD Oz./ton
118	NIL
119	NIL
120	0.06

* 4379

APL

Per *G. Lebel*
G. Lebel, Manager



SWASTIKA LABORATORIES LIMITED

P.O. BOX 10, SWASTIKA, ONTARIO P0K 1T0

TELEPHONE: (705) 642-3244

ANALYTICAL CHEMISTS • ASSAYERS • CONSULTANTS

Certificate of Analysis

Certificate No. 51745

Date: July 7, 1981

Received June 26, 1981 7 Samples of split core

Submitted by Intex Mining Limited, Toronto, Ontario Att: J.P. Sheridan

SAMPLE NO.	GOLD Oz./ton
121	NIL
122	NIL
123	NIL
124	0.01
125	0.002
126	0.005
127	0.002

4460

Per G. Lebel
G. Lebel, Manager



SWASTIKA LABORATORIES LIMITED

P.O. BOX 10, SWASTIKA, ONTARIO P0K 1T0

TELEPHONE: (705) 642-3244

ANALYTICAL CHEMISTS • ASSAYERS • CONSULTANTS

RECEIVED OCT - 2 1981

Certificate of Analysis

Certificate No. 52457 Date: September 29 1981

Received Sept. 25/81 2 Samples of Ore

Submitted by Intex Mining Limited, Toronto, Ontario Att'n: Mr. J.P. Sheridan

SAMPLE NO. GOLD
Oz./ton

TULLEY TWP.

1101 0.04

1102 0.08

MLL

Per *G. Lebel*
G. Lebel - Manager

ESTABLISHED 1928



SWASTIKA LABORATORIES LIMITED

P.O. BOX 10, SWASTIKA, ONTARIO P0K 1T0

TELEPHONE: (705) 642-3244

ANALYTICAL CHEMISTS • ASSAYERS • CONSULTANTS

Certificate of Analysis

RECEIVED OCT 29 1981

Certificate No. 52643

Date: Oct. 29, 1981

Received Oct. 26, 1981 10 Samples of ore

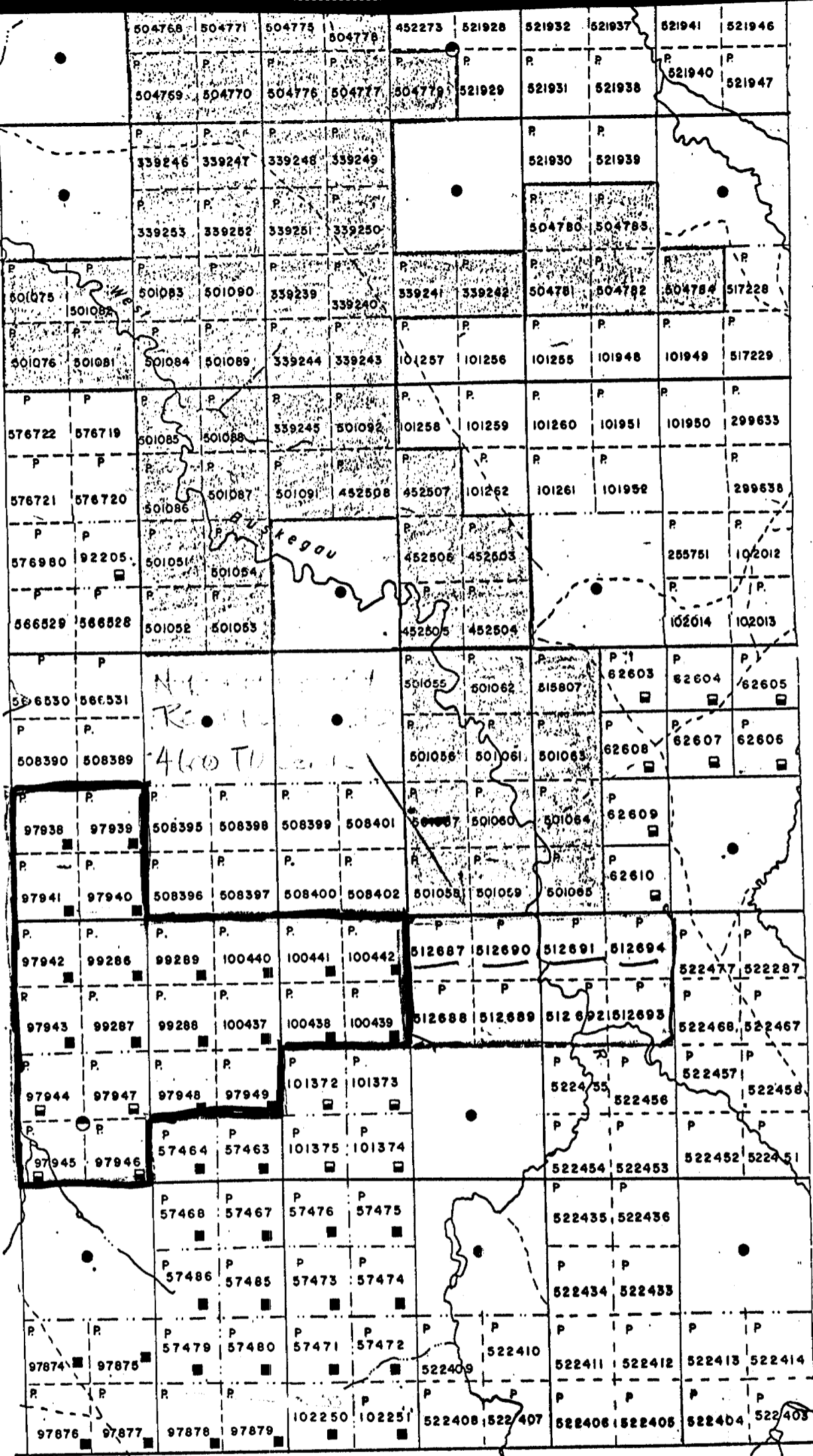
Submitted by Intex Mining Limited, Toronto, Ontario Per: P. Roby

SAMPLE NO.	GOLD Oz./ton
1	0.002
2	NIL
3	0.24
4	0.26
5	0.002
6	0.30
7	0.002
8	NIL
9	NIL
10	NIL

ASL

Per *G. Lebel*
G. Lebel, Manager

PROSSER Tp. M. 571



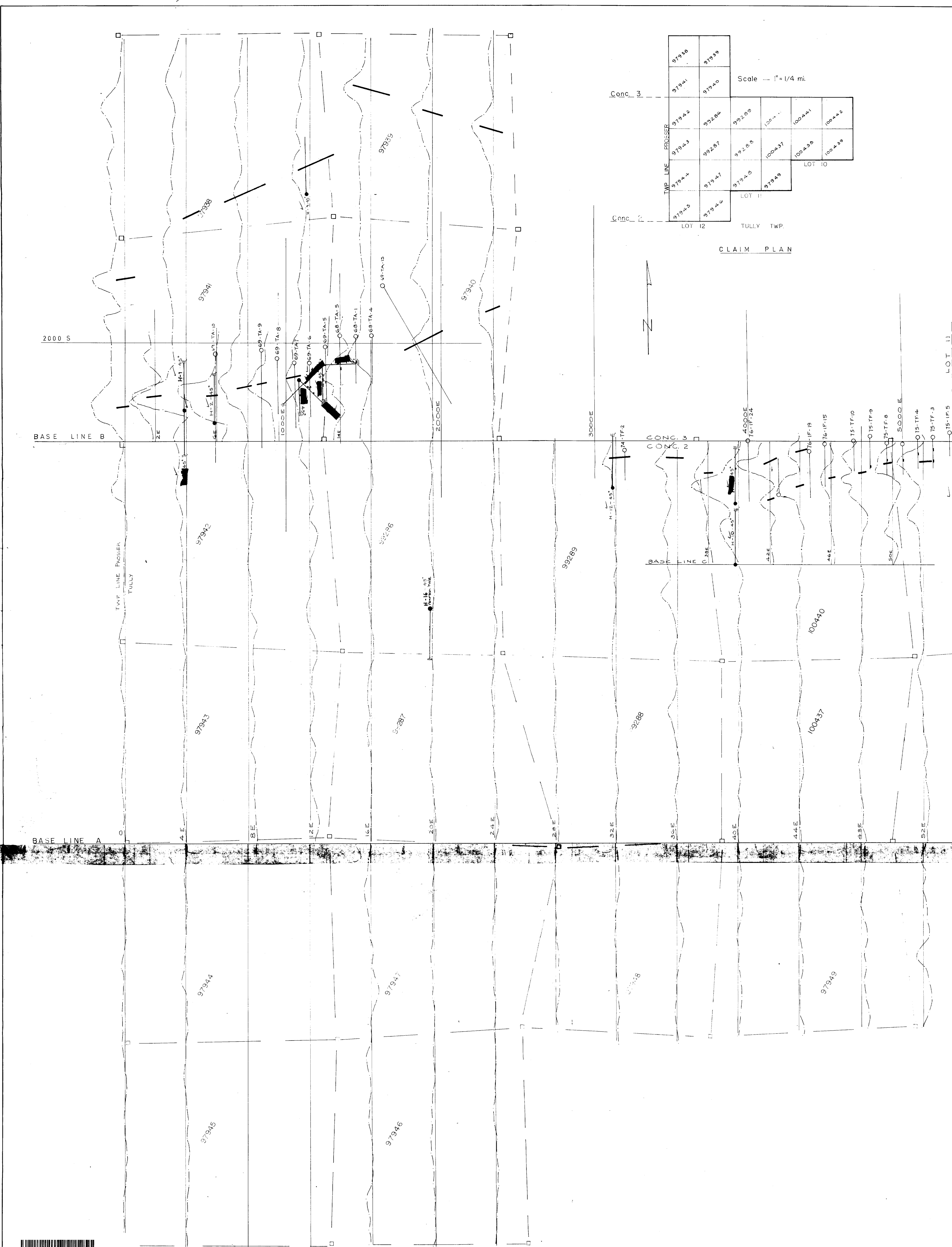
12 11 10 9 8 7

TULLY TWP

GOWAN T

DM76-PE71-C-81

Handwritten signature/initials

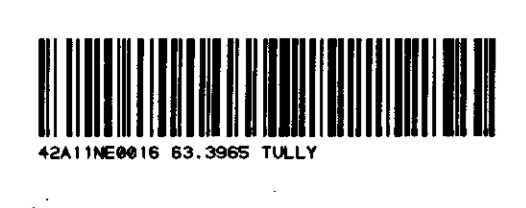
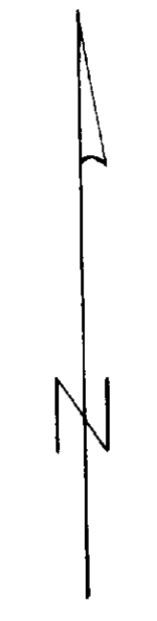


Scale 1" = 1/4 mi.

97938	97939				
97941	97940				
97942	97943	97944	97945	97946	97947
97948	97949	97950	97951	97952	97953
97954	97955	97956	97957	97958	97959

LOT 10
LOT 11
LOT 12

CLAIM PLAN



Conc. 3		97938	97939
		97941	97940
TWP LINE PROSSER	97942	99286	100441
	97943	99287	100437
	97944	99288	100441
Conc. 2		97945	97946
		97947	97948
		97949	100439

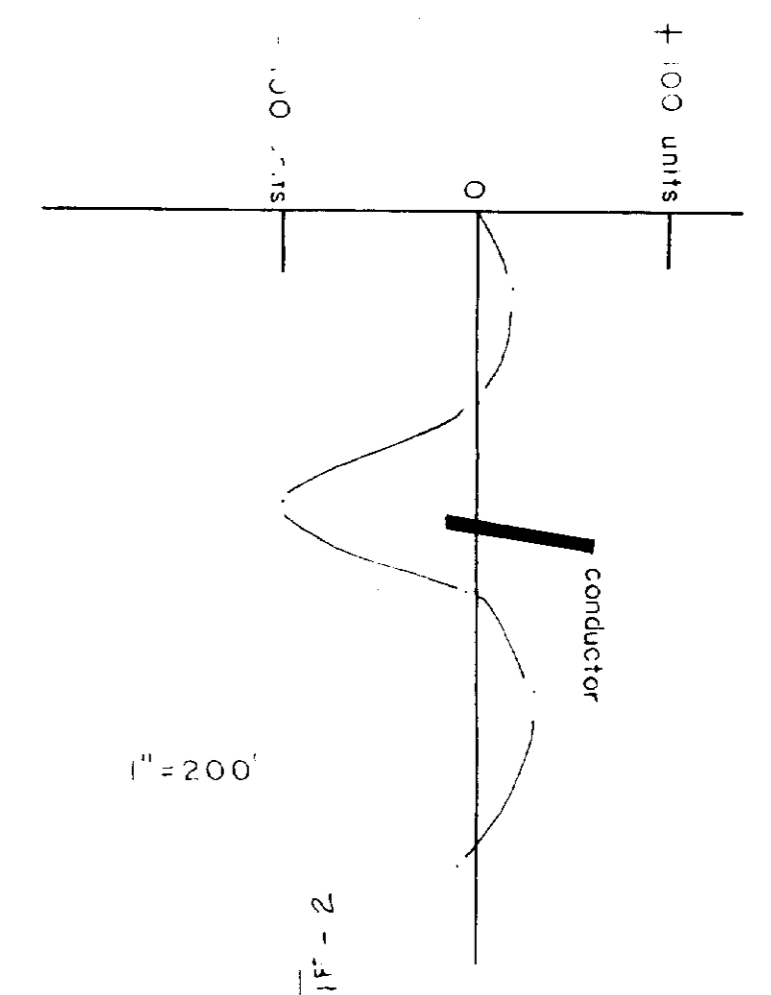
Scale - 1" = 1/4 mi.

INTEX MINING COMPANY LTD.

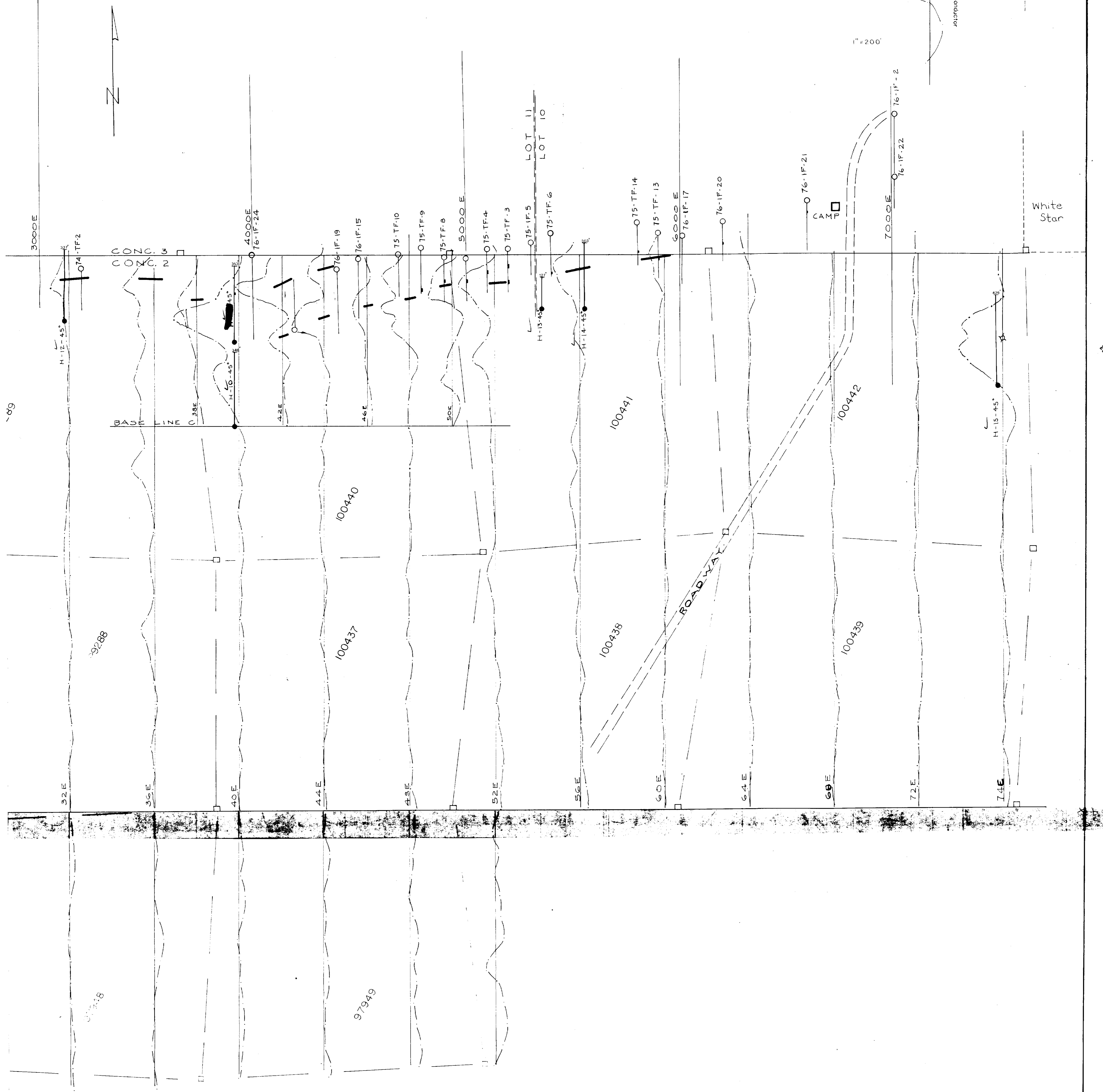
E-M SURVEY 200' CABLE

B.G. AMP - 195 PHASE - 180

SCALE - 1" = 200'
1" = 100 units



CLAIM PLAN



0M 76-PE71-C-81

MAGNIPHASE E-M SURVEY AND DRILL HOLES
 INTEX MINING COMPANY LIMITED PROPERTY
 TULLY TWP. PROPERTY
 PORCUPINE MINING DIVISION
 ONTARIO
 by J. P. SHERIDAN P. ENG.
 OCT. 26, 1981

J.P.S.