

DIAMOND DRILL



42A11NE0029 47 TULLY

010

TOWNSHIP: Tully

REPORT No.: 47

WORK PERFORMED BY: ^{Canada} Rosario Resources Ltd.

<u>CLAIM No.</u>	<u>HOLE No.</u>	<u>FOOTAGE</u>	<u>DATE</u>	<u>NOTE</u>
P 522439	T 80-13	632.0'	Oct/80	(1)

NOTES: (1) #357-80



THE MINING ACT - MINISTRY OF NATURAL RESOURCES
DIAMOND DRILLING LOG

Start a new page for every new hole, but fill in top portion of form only on first page for each hole.

FILL IN ON EVERY PAGE

HOLE NO. T 80-13 PAGE NO. 1

DRILLING COMPANY NOREX DRILLING LIMITED		COLLAR ELEVATION	BEARING OF HOLE FROM TRUE NORTH 180	TOTAL FOOTAGE 623	DIP OF HOLE AT collar -55	LOCATION OF HOLE IN RELATION TO A FIXED POINT ON THE CLAIM L 66 + 00E 43 + 50N	MAP REFERENCE NO.	CLAIM NO. P522439
DATE HOLE STARTED October 10, 1980	DATE COMPLETED October 16, 1980	DATE LOGGED Nov 24/80	LOGGED BY Bruce Durham	300 ft	-52		LOCATION (Twp., Lot, Con. OR Lot. and Long.) NW $\frac{1}{2}$, N $\frac{1}{2}$, Lot 4, Con. I, Tully Twp.	
EXPLORATION CO., OWNER OR OPTIONEE ROSARIO RESOURCES CANADA LTD.		DATE SUBMITTED	SUBMITTED BY (Signature) <i>Bruce Durham</i>	610 ft	-44			
				ft				PROPERTY NAME Tully

FOOTAGE FROM	TO	ROCK TYPE	DESCRIPTION Colour, grain size, texture, minerals, alteration, etc.	PLANAR FEATURE ANGLE	CORE SPECIMEN FOOTAGE †	YOUR SAMPLE NUMBER	SAMPLE FOOTAGE		SAMPLE LENGTH	ASSAYS †	
							FROM	TO		Au ppb	
0	280	Casing									
280	311.9	Talcose carbonated ultramafic	Talc - magnesite rich fairly massive ultramafic. Minor ankerite, chlorite and pyrite are present. 291 - 293 10% carbonate veining			13753	291	293	2	795	
311.9	333	Slightly graphitic argillite	Massive black sediment with no visible bedding. There are scattered ankerite seams and qtz - ankerite veinlets as well as qtz - dolomite veins. Py content throughout is very low. 312 - 312.6 70% white qtz 313 - 316 scattered 1/8" to 1/2" carb-qtz veins 325.3 - 2 - 3/4" qtz - dolomite veins			13754	295.5	247	1.5	10	
			328 - 330.3 70% ankerite - qtz tourmaline (brown) + minor py in vein. There are numerous wall rock inclusions and there is some micro-veining. 330.7 1" piece of qtz			13755	311.5	314.5	3	23	
						13756	314.5	317.5	3	33	
						13757	317.5	320	2.5	7	
						13758	320	325	5	8	
						13759	325	327.5	2.5	8	
						13760	327.5	330	2.5	10	
333	354.7	Andesite	Very weakly carbonated weakly schistose andesite (carbonate alteration is calcitic). 343.7 - 344.2 Felsic (Rhyodacitic) fragments up to 1" set in an andesitic matrix 348 - 350 Coarse grained section. 1" of chlorite developed at contact.			13761	330	333	3	8	
						13762	333	336	3	15	
						13763	361	366	5	5	
354.7	373	Rhyodacitic tuff	Sharp contact at 50° to beige siliceous tuffaceous fragmental - finer fragments are often difficult to distinguish. This unit is only weakly fractured and py content is <0.5%. The only veining present is calcite epidote veins up to 1 or 2".			13764	366	371	5	12	
						13765	443	447	4	10	



THE MINING ACT - MINISTRY OF NATURAL RESOURCES
DIAMOND DRILLING LOG

Start a new page for every new hole, but fill in top portion of form only on first page for each hole.

FILL IN ON EVERY PAGE

HOLE NO. T 80-13
PAGE NO. 2

DRILLING COMPANY		COLLAR ELEVATION	BEARING OF HOLE FROM TRUE NORTH	TOTAL FOOTAGE	DIP OF HOLE AT collar	LOCATION OF HOLE IN RELATION TO A FIXED POINT ON THE CLAIM	MAP REFERENCE NO.	CLAIM NO.	
DATE HOLE STARTED	DATE COMPLETED	DATE LOGGED	LOGGED BY		ft		LOCATION (Tp., Lot, Con. OR Lat. and Long.)		
EXPLORATION CO., OWNER OR OPTIONEE		DATE SUBMITTED	SUBMITTED BY (Signature)		ft		PROPERTY NAME		
					ft				

FOOTAGE FROM	TO	ROCK TYPE	DESCRIPTION Colour, grain size, texture, minerals, alteration, etc.	PLANAR FEATURE ANGLE	CORE SPECIMEN FOOTAGE	YOUR SAMPLE NUMBER	SAMPLE FOOTAGE		SAMPLE LENGTH	ASSAYS +	
							FROM	TO		Au ppb	
373	400	Dacitic flows & minor tuffs	Pale grey - beige very mildly carbonated massive flows & narrow interflow tuffaceous sections. Some sections are quite siliceous. Narrow chloritic sections appear to be pillow rims.			13766	447	450	3	16	
						13767	450	453	3	38	
						13768	453	456	3	11	
400	418.5	Andesite (pillowed)	Fairly massive and uniform pillowed light green andesite.			13769	456	461	5	23	
418.5	437	Altered andesite (Pillowed)	Andesite pillow lava as above except the pillows are smaller and are bleached near the chloritic rims.			13770	461	464	3	15	
437	441.5	Carbonated andesite tuff	Gradational change to a grey carbonated tuff fragments are not obvious but are present. Py is present in only trace amounts.			13771	464	466	2	15	
						13772	479	484	5	11	
441.5		Slightly graphitic tuff & argillite	Fairly massive black, carbonated argillite. Pyrite content < 1% overall. Only minor qtz veining developed.	70-80		13773	489	491	2	19	
			451 - 452 50% carbonate & qtz & 2% py			13774	494	496	2	26	
			454 - 454.5 30% carbonate & qtz & 1% py			13775	499	504	5	30	
			456.7 3/4" qtz carb vein			13776	504	509	5	77	
			464 - 466 40% qtz & carb.								
			466 - 477 carbonated andesite tuff & minor argillaceous material			13777	509	514	5	14	
			477.3 2" qtz vein			13778	514	519	5	16	
			490 - 490.6 60% qtz - calcite veining								
			495 - 496 2 - 1" qtz - calcite veins			13779	514	524	5	16	
			494 increase in py content to 2 - 3% generally as fine disseminated grains								
			502 2" qtz vein			13780	524	529	5	38	
			503 - 509 10% nodular py								
			513.6 - 514.1 qtz vein								
			519.9 1" qtz carb vein			13781	529	534	5	25	
			523 - 524 40% brecciated carb - qtz								
			526 - 527 30% qtz carb			13782	534	539	5	49	
			528.3 - 529.7 30% narrow wormy qtz cb stringers			13783	539	543	4	48	



THE MINING ACT - MINISTRY OF NATURAL RESOURCES
DIAMOND DRILLING LOG

Start a new page for every new hole, but fill in top portion of form only on first page for each hole.

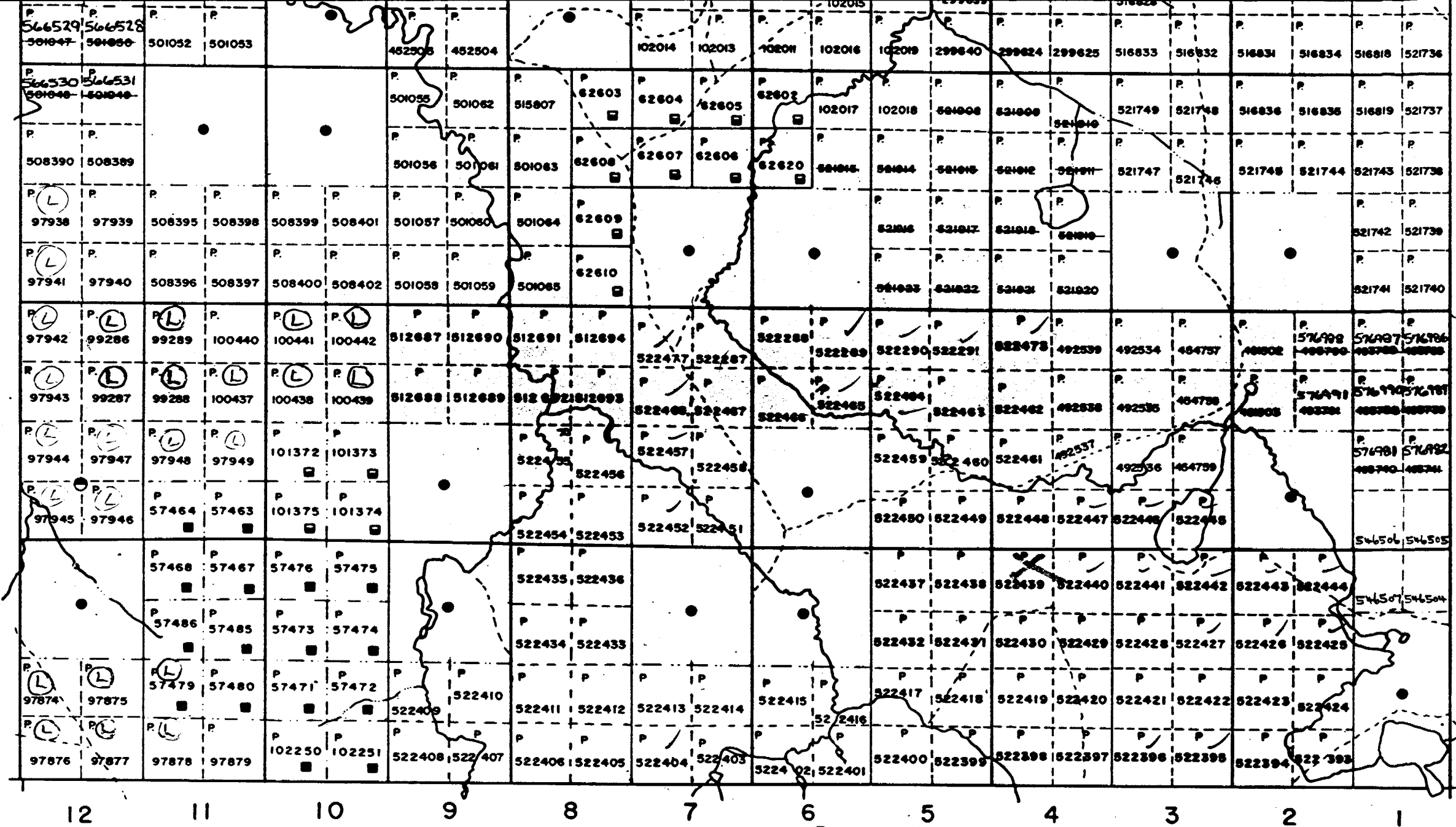
FILL IN ON EVERY PAGE **HOLE NO. T 80-13** **PAGE NO. 3**

DRILLING COMPANY		COLLAR ELEVATION	BEARING OF HOLE FROM TRUE NORTH	TOTAL FOOTAGE	DIP OF HOLE AT	LOCATION OF HOLE IN RELATION TO A FIXED POINT ON THE CLAIM	MAP REFERENCE NO.	CLAIM NO.
DATE HOLE STARTED	DATE COMPLETED	DATE LOGGED	LOGGED BY	collar	ft			
EXPLORATION CO., OWNER OR OPTIONEE		DATE SUBMITTED	SUBMITTED BY (Signature)	ft	ft		LOCATION (Tp., Lot, Con. OR Lat. and Long.)	
				ft	ft			
				ft	ft			PROPERTY NAME

FOOTAGE FROM	TO	ROCK TYPE	DESCRIPTION <small>Colour, grain size, texture, minerals, alteration, etc.</small>	PLANAR FEATURE ANGLE *	CORE SPECIMEN FOOTAGE †	YOUR SAMPLE NUMBER	SAMPLE FOOTAGE		SAMPLE LENGTH	ASSAYS †	
							FROM	TO		Au	ppb
			530 - 534 several 1" or less carb - qtz veins.								
			536 - 537.5 10% qtz calcite & 5% py (nodular & disseminated)								
545	568	Basalt (komatiitic?)	Massive slightly tan in upper part grading to green calcite rich flow in lower part.								
568	623	Ultramafic	Somewhat chloritic and quite calcite rich in upper part and some fragments are discernible. 568 - 569 2 spinifex textured angular fragments 592 - 623 serpentized peridotite - some polyhedral jointing present. Calcite alteration persists to the bottom of the hole.								
			<i>Core stored in Timmins Casing Pulled</i>								

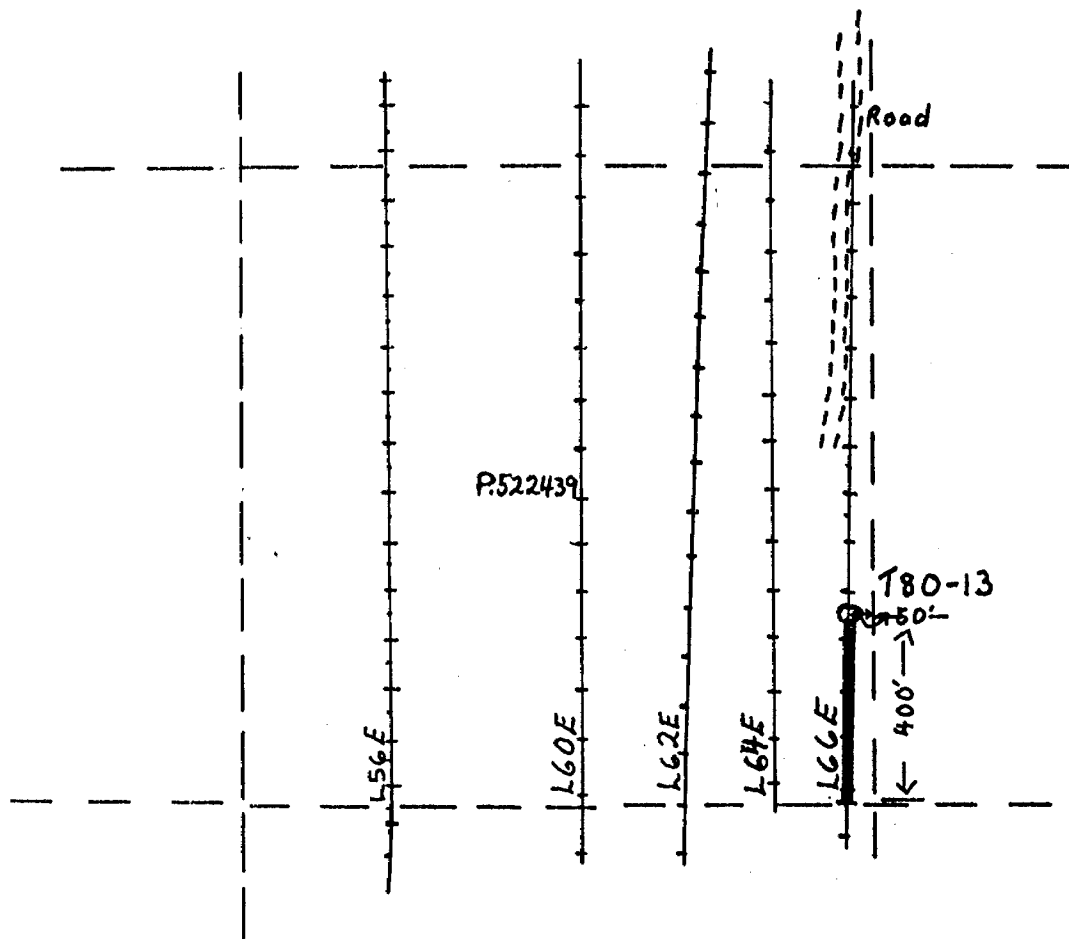
* For features such as foliation, bedding, schistosity, measured

PROSSER Tp.



12 11 10 9 8 7 6 5 4 3 2 1

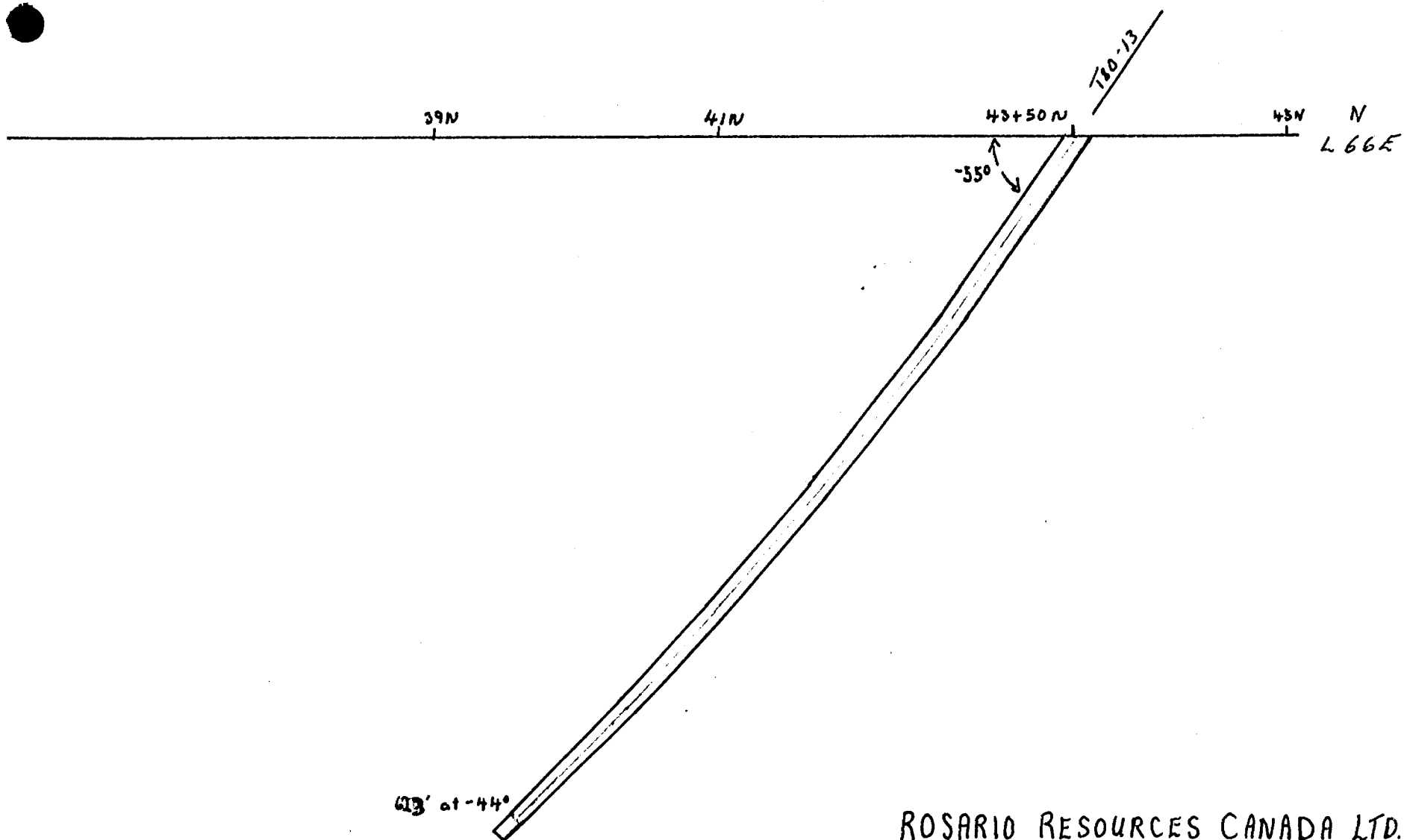
July Sup #357-80
 GOWAN Tp. M.285



ROSARIO RESOURCES CANADA LTD.

T80-13
1"-400
Tully Twp

S



N
L 66E

413' at -44°

ROSARIO RESOURCES CANADA LTD.

Tully Twp.

T80-13

1"=100'