



42A11NE0042 18 TULLY

010

Diamond Drilling

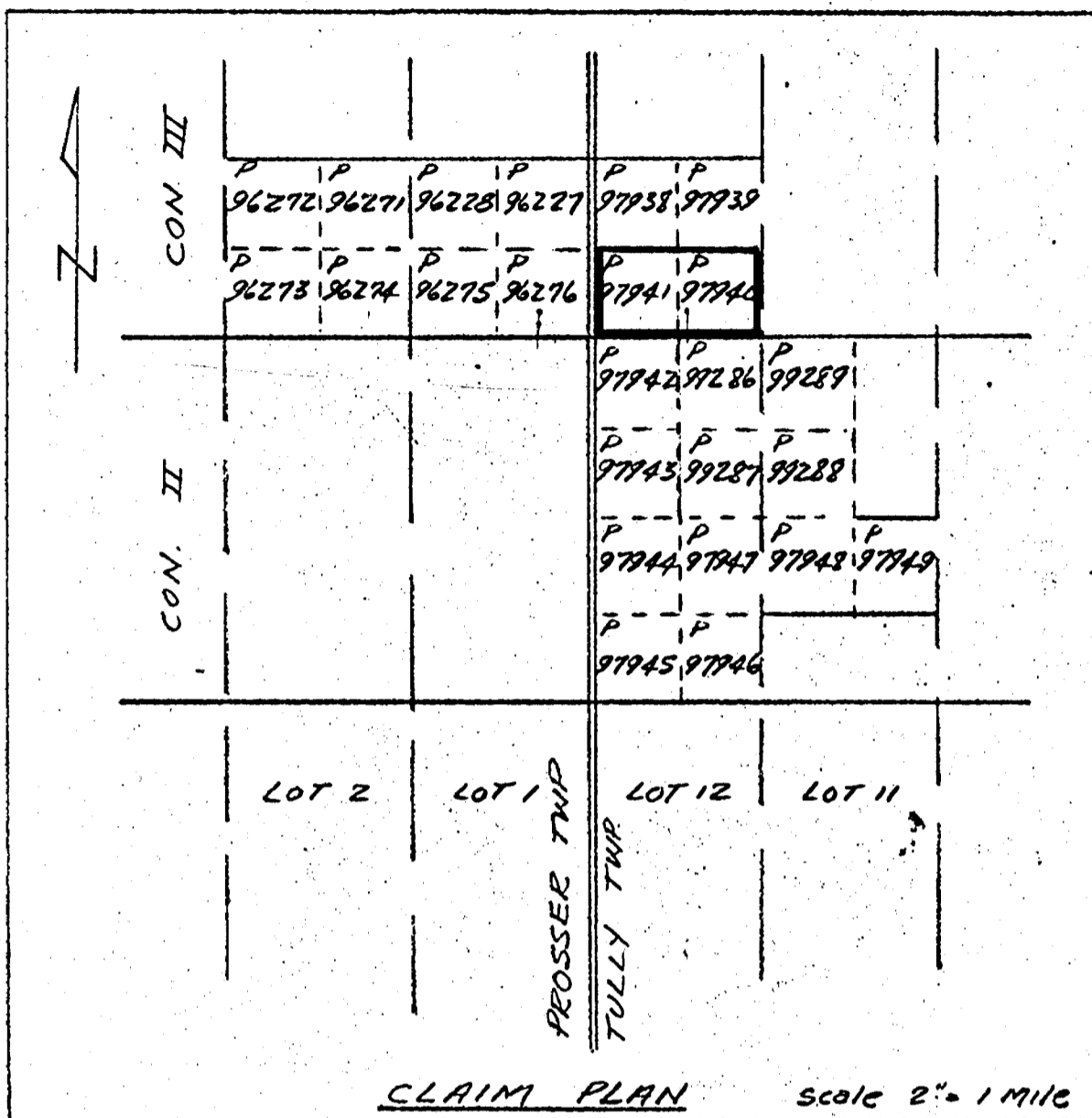
Township of TULLY

Report No: 18

Work performed by: Texmont Mines

Claim No	Hole No	Footage	Date	Note
P 97940	68-TA-1	889'	Sept-Oct/68	
	68-TA-2	631'	Nov/68	
	68-TA-3	458'	Dec/68	
	68-TA-4	471'	Dec/68	
P 97941	69-TA-5	483'	Jan/69	
	69-TA-6	475.5'	Jan/69	
	69-TA-7	588'	Jan/69	
		<u>3995.5</u>		

Notes:



CLAIM PLAN scale 2" = 1 mile

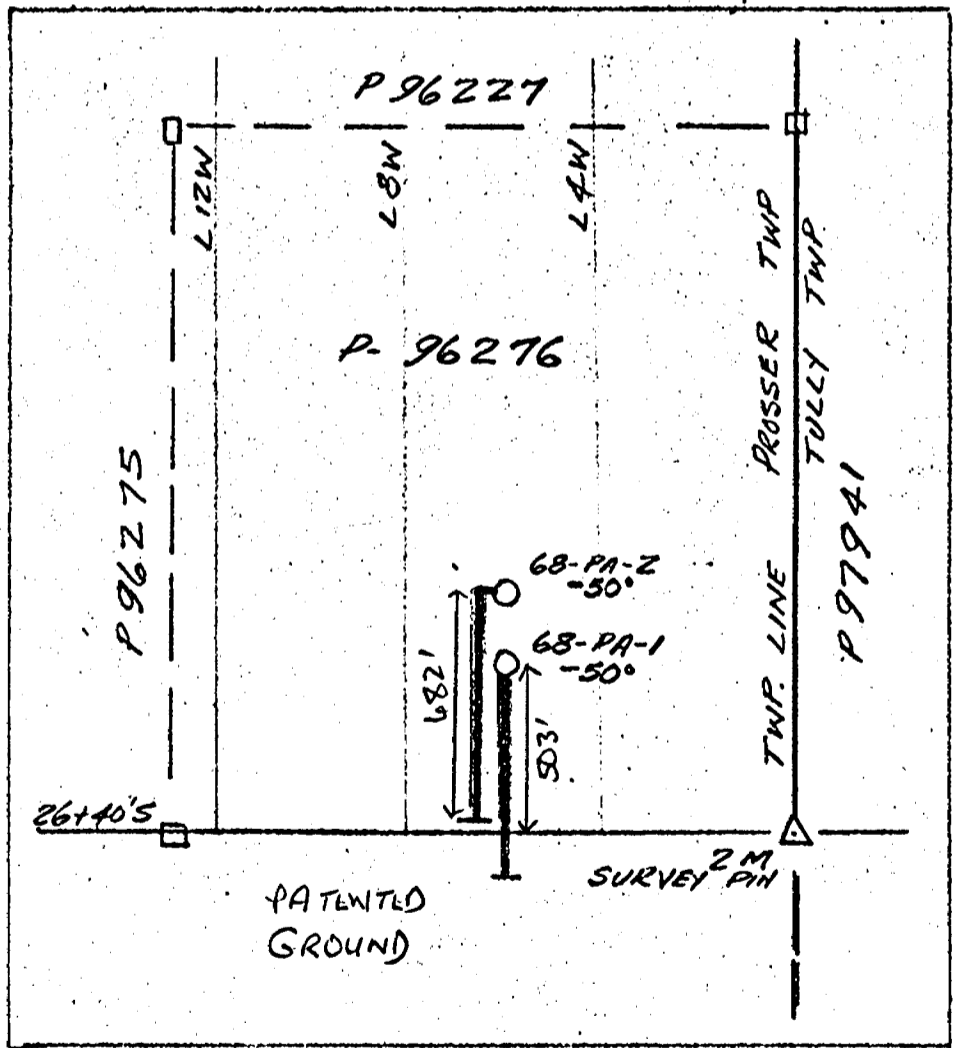
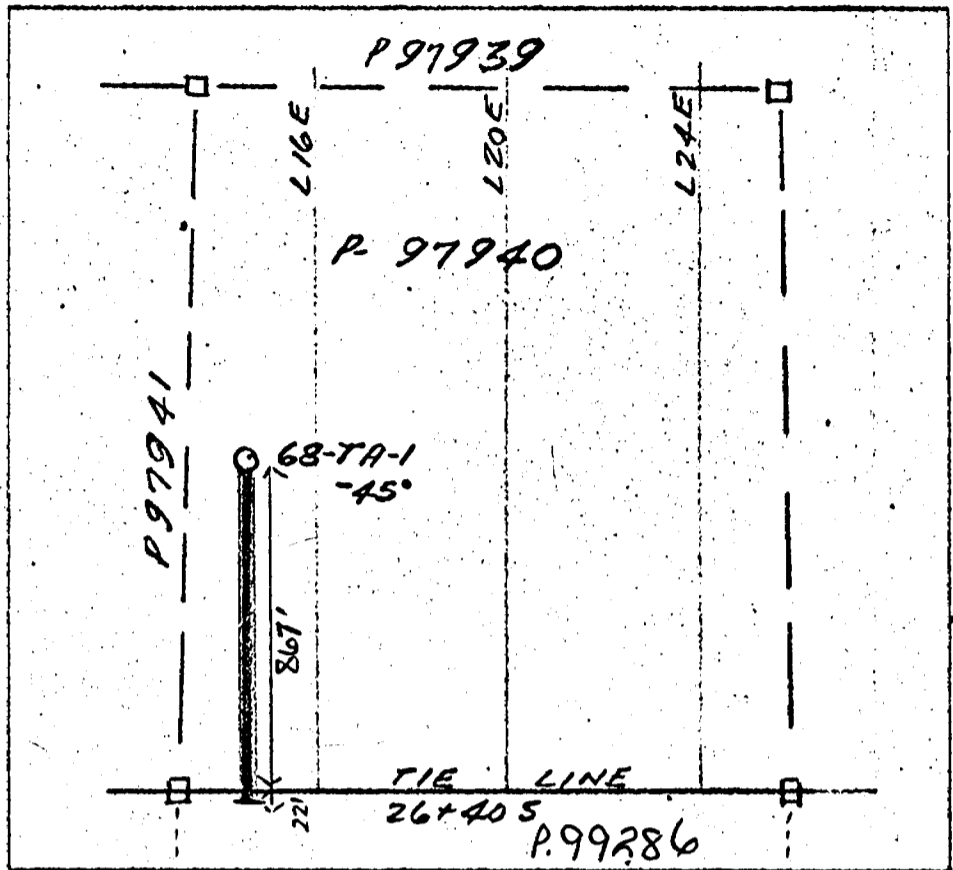
TEXMONT MINES LIMITED
PROSSER & TULLY TWPS.
POKUPINE MINING DIV. - ONT.

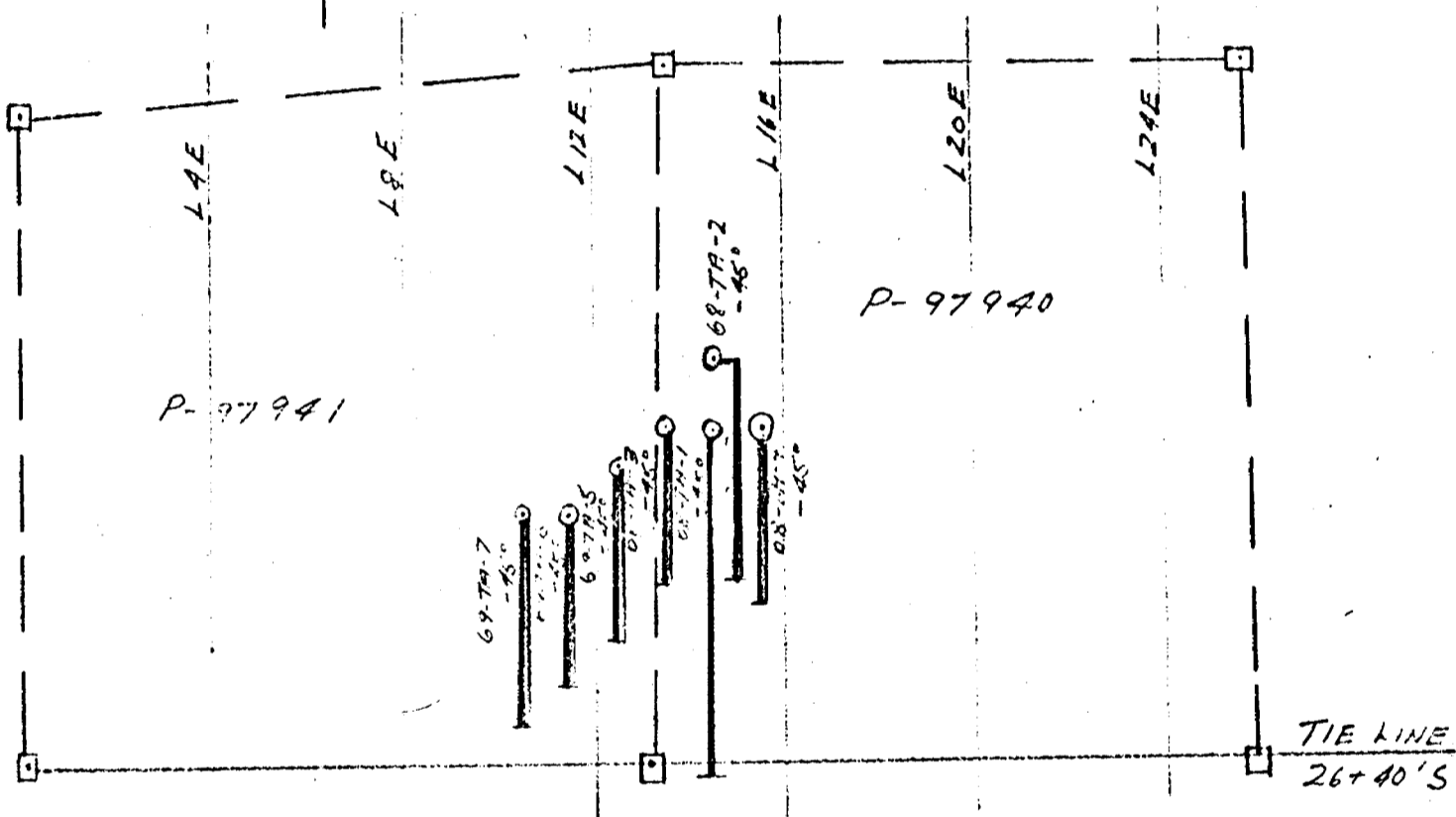
DRILL HOLE PLAN

SCALE 1" = 400'

APR. 1969

S. Guimond.





TEXMONT MINES LTD.
PROSSER & TULLY TWPS.
PORCUPINE MINING DIV. - ONT.

DRILL HOLE PLAN

SCALE - 1" = 400'

JUNE 1969

A Guimond

DIAMOND DRILL RECORD

NAME OF PROPERTY TEXMONT MINES LTD. Lots 11 & 12, Con. II & III
 HOLE NO. 68-TA-1 LENGTH 889' Tully Twp. Ont.
 LOCATION Claim No. 97940
 LATITUDE Line 14 + 50 E DEPARTURE 19 + 56' S of B.L. 0
 ELEVATION 6' above Swamp AZIMUTH 180° DIP -45°
 STARTED Sept. 27, 1968 FINISHED Oct. 9, 1968

FOOTAGE	DIP	AZIMUTH	FOOTAGE	DIP	AZIMUTH
200'	-40°				
600'	-35°				
885'	-34°				

HOLE NO. 68-TA-1 SHEET NO. 1

REMARKS Rods seized at 889'
pulled out leaving shell and bit
in hole. Stopped hole at 889'.

LOGGED BY S. GUIMOND

FOOTAGE		DESCRIPTION	SAMPLE				ASSAYS			
FROM	TO		NO.	% SULPHIDES	FOOTAGE		%	%	OZ/TON	OZ/TON
					FROM	TO				
0	4	OVERBURDEN, Casing at 5'								
4	42.3	ANDESITE VOLCANIC LAVA Moderately hard; greyish green, fine grained, chloritized, silicified and carbonatized with narrow quartz-calcite stringers up to $\frac{3}{4}$ " , few small quartz inclusions, slightly magnetic, very fine iron sulphides disseminated and few small specks of chalcopyrite.								
42.3	309	BANDED CARBONATES Moderately hard, pale brownish, greenish, grey; fine grained, non-magnetic; few small quartz inclusions; rusty leached zones at 75.5-76.5; 117.8-118.5; 122-122.3; 131-131.4; 140-142. Silicified graphitic zones with quartz calcite stringers up to $\frac{1}{2}$ " and iron sulphide patches and streaks up to $\frac{1}{4}$ " , estimated 2% , at 136-150; and 175.7-194.7. This is the reason for the main F.M. anomaly. Quartz sulphide sections were sampled for gold. Section 185-195 has more quartz. At 309' on contact 1" of disseminated iron sulphides, and fine magnetite.								
309	360	ANDESITE VOLCANIC LAVA Similar to above.								
360	400	BANDED CARBONATES Similar to above except no silicified graphitic zones and less iron sulphides.								
400	656	ANDESITE VOLCANIC LAVA Similar to above. Very fine chalcopyrite disseminated. 648.5-650' Few iron sulphide patches up to $\frac{1}{4}$ ".								
656	720	BANDED CARBONATES Similar to 360 - 400'. Few quartz breccia seams up to 3"; c/a 45-50° at 702-720'.								

EM. 6-1168

LANGRIDGE LIMITED,

DIAMOND DRILL RECORD

NAME OF PROPERTY _____
 HOLE NO. _____ LENGTH _____
 LOCATION _____
 LATITUDE _____ DEPARTURE _____
 ELEVATION _____ AZIMUTH _____ DIP _____
 STARTED _____ FINISHED _____

FOOTAGE	DIP	AZIMUTH	FOOTAGE	DIP	AZIMUTH

HOLE NO. 68-TA-1 SHEET NO. 2
 REMARKS _____

LOGGED BY *J. Guimond*

FOOTAGE		DESCRIPTION	SAMPLE			ASSAYS						
FROM	TO		NO.	% SULPHIDES	FOOTAGE			%	%	OZ/TON	OZ/TON	
					FROM	TO	TOTAL					
720	735.7	CONTACT ZONE										
		Dark greenish grey and black carbonate, fine grained, streaks of white calcite up to 5".										
735.7	763.5	ALTERED PERIDOTITE										
		Serpentinized and carbonatized. Dark grey, greenish grey and black, very fine sulphides disseminated; non-magnetic.										
763.5	803	TALCOSE CRUSHED ZONE										
803	838.5	SERPENTINIZED PERIDOTITE										
		Non-magnetic, very fine sulphides disseminated down to 826.5'										
838.5	850	SERPENTINITE										
		Non-magnetic, lean.										
850	889	TALCOSE										
		Lean										
889		END OF HOLE										

EM. 6-1168

LANGRIDGE LIMITED,

DIAMOND DRILL RECORD

Claim No. P 97940

NAME OF PROPERTY TEXMONT MINES LTD.
 HOLE NO. 68-TA-2 LENGTH 631'
 LOCATION Tully Twp., Ont. (S.E. 1/4 of S 1/2, Con. III, Lot 12)
 LATITUDE Line 14 + 50' E DEPARTURE 18 + 06' S of B.L. "0"
 ELEVATION 6' above Swamp AZIMUTH 180° DIP -45°
 STARTED Nov. 21, 1968 FINISHED November 27, 1968

FOOTAGE	DIP	AZIMUTH	FOOTAGE	DIP	AZIMUTH
200'	-45°				
400'	-43°				
600'	-40°				

HOLE NO. 68-TA-2 SHEET NO. 1

REMARKS Hole was cemented in 3 places: 43', 163' and 354'

LOGGED BY S. GUIMOND

FOOTAGE		DESCRIPTION	SAMPLE			ASSAYS				
FROM	TO		NO.	% SULPHIDES	FOOTAGE		%	%	OZ/TON	OZ/TON
				FROM	TO	TOTAL				
0	12	OVERBURDEN and casing								
12	172	ANDESITE VOLCANIC LAVA Greyish green, fine grained, moderately hard chloritized and carbonatized, magnetic, narrow quartz-calcite stringers up to 1/2" and few quartz-calcite inclusions, scattered disseminated and few small streaks of fine pyrite, pyrrhotite and specks of chalcopyrite, est. less than 1%. 129-172' More carbonatized and chloritized than above.								
172	388	BANDED CARBONATES Pale greenish-brownish grey, fine grained, est. mainly 1% fine sulphides. <u>Tuffaceous Graphitic Zones at: 235-254'; 305-315'</u> With brecciated quartz-calcite stringers and est. 2% marcasite in nodules and streaks up to 1/4". These zones are the E.M. conductor and correlating with hole 68-T-2 the top one dips at 43°N, the second one dips at 55°N.								
388	631	CARBONATES Banded sediments and rhyolite volcanic interflow, grey and greenish grey, fine grained, few quartz-calcite inclusions and quartz-calcite stringers up to 6" with brecciated parts down to 600'. Est. 1% sulphides disseminated down to 600' and less than 1% at 600-631'. 595-600' Magnetic spots 630-631' Phasing with andesite.								
631		END OF HOLE								

EM. 6-1168

LANGRIDGE LIMITED,

