



42A11NE0046 29 TULLY

010

Diamond Drilling

Township of TULLY

Report NO: 29

Work performed by: Texmont Mines

Claim NO	Hole NO	Footage	Date	Note
P 97947	68-T-1	963'	Aug/68	

Notes:

# DIAMOND DRILL RECORD

2-96227

Acid Dip Tests

HOLE NO. 68-T-1 SHEET NO. 1

NAME OF PROPERTY TEXMONT MINES LTD. Lots 11 & 12, Cons. II and III  
 HOLE NO. 68-T-1 LENGTH 963' TULLY TWP. Ont.  
 LOCATION Claim No. 97947  
 LATITUDE L 16 + 00 E DEPARTURE 61 + 00 S of B.L. 6  
 ELEVATION Swamp Level AZIMUTH 180° DIP -60°  
 STARTED August 4, 1968 FINISHED Sept. 19, 1968

FOOTAGE	DIP	AZIMUTH	FOOTAGE	DIP	AZIMUTH
100'	-61°		800'	-63°	
300'	-63°				
500'	-63°				
655'	-63°				

REMARKS Hole was drilled with AX core 208 - 940' and EX core 940-963' due to caving trouble.

LOGGED BY S. GUYMOND

FOOTAGE		DESCRIPTION	SAMPLE			ASSAYS			
FROM	TO		NO.	FOOTAGE FROM TO TOTAL	%	%	OZ./TON	OZ./TON	
0	208	AX Casing, overburden of clay, sand and few boulders at the bottom. Drove 3" pipe down to 55' and drilled AX casing with mud down to bedrock at 208'.		LOST AX COPE BETWEEN 208 - 940'					
208	533	ALTERED SHEARED PERIDOTITE Consisting of serpentinite, talcose and short sections of firm peridotite, mainly soft and slickensided, grey, greenish grey and dark grey sections; parts fibrous, others fine to medium grained; very fine specks of iron and nickel sulphides on slips also thin films of blue and green nickel alteration and traces of black chromite. The core is only slightly magnetic. White carbonate seams at: 254.4 - 254.8' Contorted 296.2' 2" c/a 25 - 30° 396.2' 2" with 1/4" patch of chalcopyrite specks. 397.2' 2" with 3/16" white silky slip fibre asbestos. 399' 2" 433' 2" 433.5 - 434.3' Greenish, medium grained core sections appear like altered pyroxenite at: 338.5-390'; 402.5-409'; 415-419' and 438.5-458.5. 458.5-495 Graphitic zone, mainly on slips, pyritized, to be tested for gold. (May be reason for E.M. anomaly) 511 -525.5 Parallel and radiating dark streaks, appears like altered olivine skeletons or could be meta-sediments.		236.5 - 237.9 1.4' 238.8 - 240.0 1.2' 240.8 - 242.0 1.2' 257.0 - 257.8 .8' 262.0 - 263.0 1.0' 263.8 - 266.0 2.2' 266.6 - 268.0 1.4' 272.0 - 272.5 .5' 598.0 - 599.0 1.0' 618.0 - 619.0 1.0' 624.0 - 624.6 .6' 804.0 - 805.0 1.0' 806.2 - 807.5 1.3' 813.0 - 814.0 1.0' 815.0 - 820.9 5.9' 854.5 - 855.0 .5' 856.5 - 858.3 1.8' 864.0 - 865.0 1.0' 869.0 - 870.0 1.0'			LOST: 3.5%	RECOVERED: 96.5%	
				25.8'					
				LOST EX CORE BETWEEN 940 - 963'					
				945.0 - 955.5 10.5' 958.5 - 960.5 2.0'			LOST: 51.3%		
				12.5'			RECOVERED: 45.7%		
533	963	SERPENTINIZED PERIDOTITE Less altered, darker and more firm than above; dark and greenish grey, bluish and greenish black; fine grained, scattered fine hairline asbestos seams; sections with visible olivine clusters; moderately magnetic at 533-692 and strongly magnetic at 692-963'; very fine iron and nickel sulphides disseminated, double the grade of above but less than 0.3% Ni.		TOTAL 38.3'			LOST: 5.1%	RECOVERED: 94.9%	

EM. 8-118

LAWRIE LIMITED,

# DIAMOND DRILL RECORD

NAME OF PROPERTY \_\_\_\_\_  
 HOLE NO. \_\_\_\_\_ LENGTH \_\_\_\_\_  
 LOCATION \_\_\_\_\_  
 LATITUDE \_\_\_\_\_ DEPARTURE \_\_\_\_\_  
 ELEVATION \_\_\_\_\_ AZIMUTH \_\_\_\_\_ DIP \_\_\_\_\_  
 STARTED \_\_\_\_\_ FINISHED \_\_\_\_\_

FOOTAGE	DIP	AZIMUTH	FOOTAGE	DIP	AZIMUTH

HOLE NO. 68-T-1 SHEET NO. 2

REMARKS \_\_\_\_\_

LOGGED BY \_\_\_\_\_

EM. 6-106

FOOTAGE		DESCRIPTION	SAMPLE			ASSAYS				
FROM	TO		NO.	SULPHIDES	FOOTAGE		%	%	OZ/TON	OZ/TON
					FROM	TO				
		601.5 - 624 Lamellar and radiating dark streaks, with hematite stained parts, could be meta-sediments or olivine skeletons.								
		645 - 650 Thin films of blue and green nickel alteration.								
		661.2 - 684 Lamellar and radiating dark streaks and clusters of altered olivine.								
		692.8 - 699 Olivine clusters in peridotite.								
		Granitized stringers, hard, fine grained, granular, fine feldspar and mica, dark grey, slightly magnetic, lean, at: 695-696'; 890.7-890.9'; 897.6-898.2'; 898.9-899.6'; 901-901.5'; 901.8-902'; 903.2-904.3'; 904.8-905'; 912-913'; 904.8-905'; 912-913'; 914.4-914.8'; 915.6-915.7'; 919.4-919.6'; 919.9'-920.7'; 923.6-924'.								
		NOTE: Hole gave much trouble with caving. It was cemented 5 times, at the following depths: 313', 581', 686', 774' and 940'. Finally the AX rods seized and were backed off except core barrel, shell and bit. Inserted 910' of EX casing. Drilled out tube through AX core barrel but shell and bit would not drill out. Continued to 963' when EX bit seized in AX shell and nearly stuck. Pulled out EX rods, blasted and recovered 550' of EX casing, leaving 360' in hole. Hole was stopped at 963' on Sept. 19, 1968.								

LANGRIDGE LIMITED,



PROSSER TWP.  
TULLY TWP.

P 96272	P 96271	P 96228	P 96227	P 97938	P 97939
P 96273	P 96274	P 96275	P 96276	P 97941	P 97940

P  
97942

P  
97943

P 97944	P 97947	P 97948	P 97949
------------	------------	------------	------------

P 97945	P 97946
------------	------------

CON. III

CON. II

LOT 2

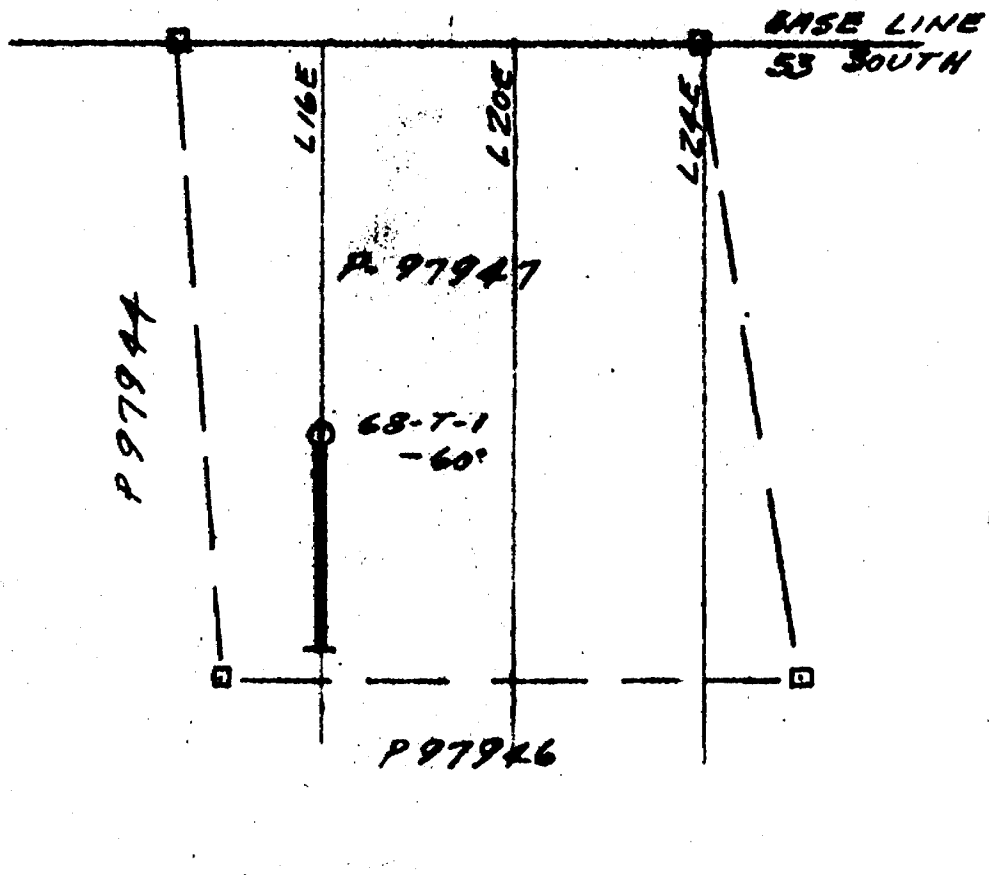
LOT 1

LOT 12

LOT 11

CLAIM PLAN

2" = 1 MILE



TEXMONT MINES LIMITED  
PROSSER & TULLY TRUST  
PORCUPINE MINING DIV. - ONT.

DRILL HOLE PLAN

SCALE 1" = 400'

NOV 1968