



42A11NE0187 13 PROSSER

010

PROSSER TOWNSHIP REPORT NO. 13

This file contains work performed by Texmont Mines Ltd.
on claims:

P.96276

Hole # 68-PA-1

Oct/68

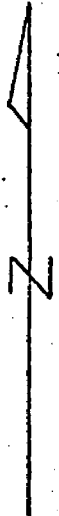
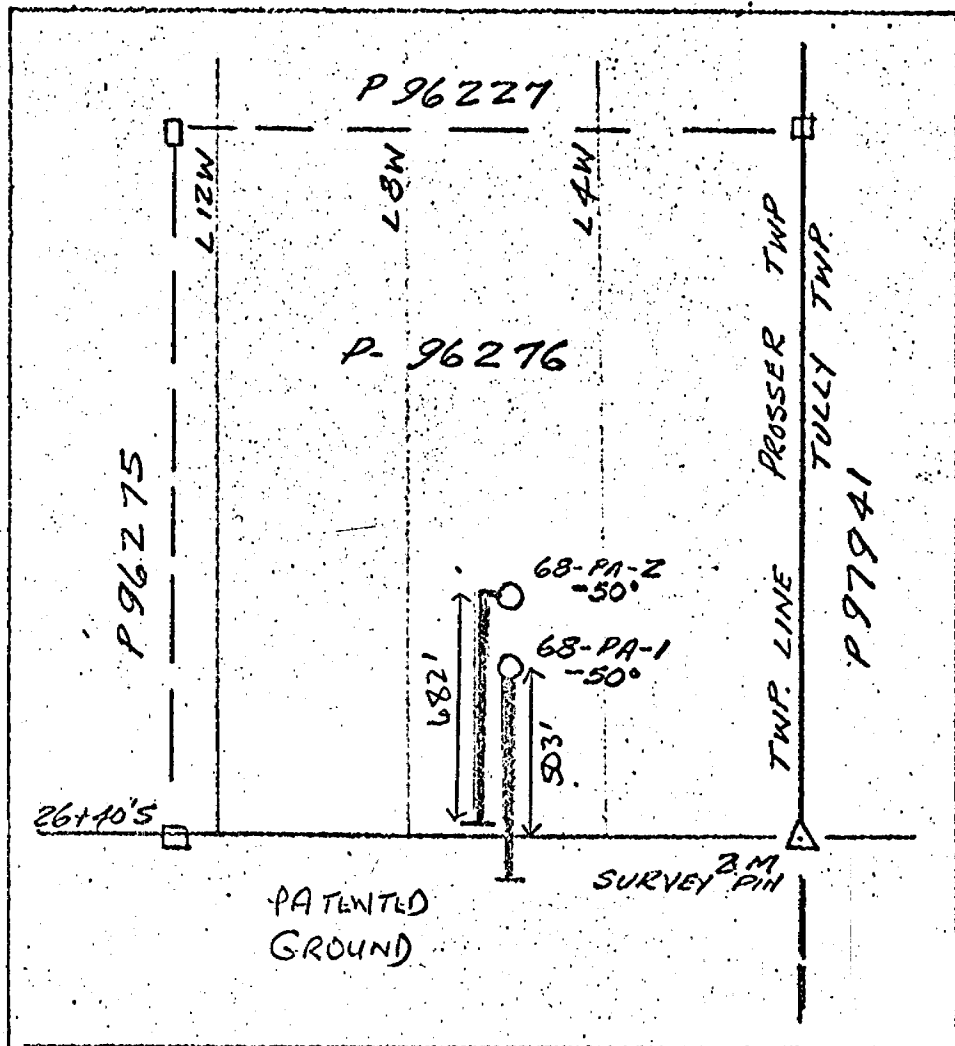
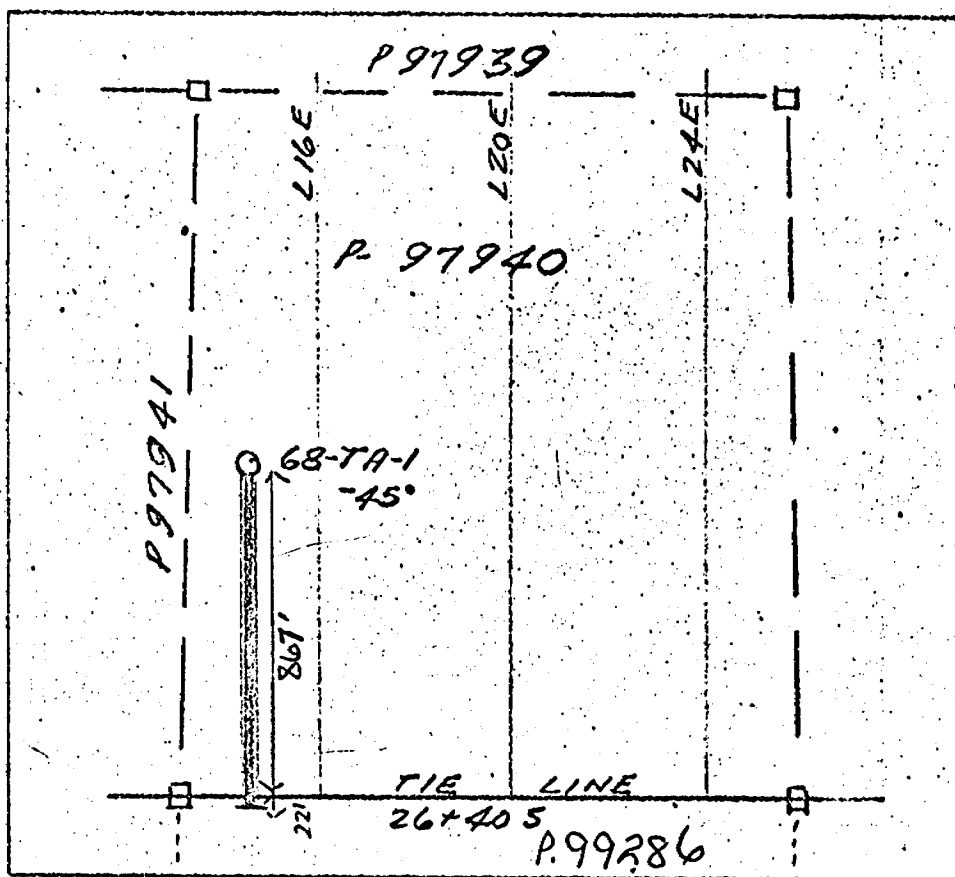
621'

68-PA-2

Nov/68

682'

1303'



DIAMOND DRILL RECORD

NAME OF PROPERTY TEKNONT MINES LIMITED, 8 claims, lots 1 & 2, Con. III
 HOLE NO. 68-PA-1 LENGTH 621'
 LOCATION Prosser Township, Ont.
 LATITUDE Line 6 + 00W DEPARTURE 22 + 90S of B.L.0
 ELEVATION Swamp Level AZIMUTH 180° DIP -50°
 STARTED Oct. 20, 1968 FINISHED November 3, 1968

FOOTAGE	DIP	AZIMUTH	FOOTAGE	DIP	AZIMUTH
100'	-49°				
300'	-45°				
497'	-41°				
590'	-41°				

HOLE NO. 68-PA-1 SHEET NO. 1
 REMARKS Hole was cemented at 562'; 594' and 621'.
 Claim No. P96276
 LOGGED BY S. GUIMOND

FOOTAGE		DESCRIPTION	SAMPLE			ASSAYS				
FROM	TO		NO.	% SULPHIDES	FOOTAGE		%	%	OZ/TON	OZ/TON
					FROM	TO				
0	37	OVERBURDEN 3" pipe 40', Ax Casing 47', both casings were not recovered because hole flowing water.			RUSTY ZONES AT:				LOST CORES AT:	
37	100	RHYOLITE VOLCANIC FLOW Pale grey, fine grained, hard, few quartz inclusions up to 1/4" in parts, silicified and carbonatized with quartz-calcite stringers up to 4", fine marcasite disseminated, estimated less than 2%. 38-42' Quartz vein, rusty in parts, leached			38.5 - 38.8				244 - 246.2	
100	130	DACITE FLOW Chloritized, silicified and carbonatized, few quartz inclusions, greenish grey, fine grained, hard, fine leucoxene, est. less than 2% fine marcasite disseminated.			46.8 - 48				258.5 - 261	
130	150	RHYOLITE VOLCANIC FLOW Similar to 37 - 100'			54 - 54.2				271.3 - 274	
150	165	DACITE FLOW Similar to 100 - 130'			65.7 - 66				372 - 373	
165	200	RHYOLITE VOLCANIC FLOW With few fine graphitic streaks, flow c/a 45-50°. Est. less than 2% fine marcasite disseminated.			84 - 84.3				376.5 - 379	
200	472	TUFFACEOUS GRAPHITIC ZONE Mainly laminated grey and black with white quartz-calcite streaks, fine grained, patchy fine disseminated marcasite and submassive streaks up to 4" wide, hematite stained parts. This is the conductor. 279-284 Est. 7% marcasite 284-290 Est. 2% marcasite 410-415 Est less than 2% marcasite & pyrite 425-430 Est less than 2% marcasite 435-440 Est less than 4% marcasite & pyrite 462.5 Few specks of chalcopyrite			85.7 - 86				380 - 384	
					104.3 - 105.4				385 - 386.5	
					112.7 - 113				399 - 400	
					116 - 116.2				403.8 - 404.2	
					118.8 - 119				406 - 406.4	
					126.8 - 127.2				417.5 - 418	
					135.5 - 136.5				424.4 - 425	
					158 - 158.2					
					163.2 - 164.6					
					165 - 165.7					
					168 - 169.2					
					173.2 - 174.3					
					176.2 - 176.5					

EM. 6-1168

LANGRIDGE LIMITED,

DIAMOND DRILL RECORD

NAME OF PROPERTY _____
 HOLE NO. _____ LENGTH _____
 LOCATION _____
 LATITUDE _____ DEPARTURE _____
 ELEVATION _____ AZIMUTH _____ DIP _____
 STARTED _____ FINISHED _____

FOOTAGE	DIP	AZIMUTH	FOOTAGE	DIP	AZIMUTH

HOLE NO. 68-PA-1 SHEET NO. 2

REMARKS _____

LOGGED BY *J. G. ...*

EM. 6-1168

LANGRIDGE LIMITED,

FOOTAGE		DESCRIPTION	SAMPLE			ASSAYS			
FROM	TO		NO.	% SULPHIDES	FOOTAGE FROM TO TOTAL	%	%	OZ/TON	OZ/TON
472	505	RHYOLITE VOLCANIC FLOW & CARBONATES Brownish-greenish grey with white quartz stringers up to 2", patchy disseminated marcasite, est. 1%.							
505	621	TALCOSE SERPENTINIZED PERIDOTITE Brownish and bluish black and grey, mainly soft, non-magnetic, est. 0.1% Ni.							
621		END OF HOLE							

DIAMOND DRILL RECORD

NAME OF PROPERTY TEKMONT MINES LTD. 8 claims, Lots 1 & 2, Con. III
 HOLE NO. 68-PA-2 LENGTH 682'
 LOCATION Prosser Township, Ontario
 LATITUDE Line 6 + 00 W DEPARTURE 21 + 40 S of B.L. "Q"
 ELEVATION Swamp level AZIMUTH 180° DIP -50°
 STARTED Nov. 5, 1968 FINISHED November 18, 1968

FOOTAGE	DIP	AZIMUTH	FOOTAGE	DIP	AZIMUTH
100'	-47°				
300'	-46°				
500'	-43°				
675'	-41°				

HOLE NO. 68-PA-2 SHEET NO. 1

REMARKS _____

CLAIM NO. P 96276

LOGGED BY S. GUYMOND

EM. 6-1168

LANGRIDGE LIMITED,

FOOTAGE		DESCRIPTION	SAMPLE			ASSAYS				
FROM	TO		NO.	% SULPHIDES	FOOTAGE		%	%	oz/TON	oz/TON
				FROM	TO	TOTAL				
0	18	OVERBURDEN (Casing 18', not recovered)								
18	230	DACITE VOLCANIC FLOW Chloritized, silicified and carbonatized, narrow white quartz-calcite stringers up to 2", few small quartz-calcite inclusions, fine leucoxene, greenish grey, fine grained, schisted parts, non-magnetic, patchy very fine sulphides and few specks of chalcopyrite.								
230	357	ANDESITE VOLCANIC LAVA Moderately hard, greyish green, fine grained, chloritized and carbonatized, est. 1% very fine sulphides disseminated and few specks of chalcopyrite. 248-350' Magnetic, due to fine magnetite crystals disseminated.								
357	378	RHYOLITE FLOW AND CARBONATES Few fine graphitic streaks, est. 1% marcasite disseminated.								
378	605	TUFFACEOUS GRAPHITIC ZONE Laminated grey and black with white quartz-calcite streaks, fine grained. This is the E.M. conductor zone and the dip in correlation with hole 68-P-3 is 78° to the north. 451-458' Est. 10% marcasite, with 7" submassive marcasite streak. 458-463' Est. 4% marcasite 574-580' Est. 8% marcasite 580-605' Est. 3% marcasite								
605	639	RHYOLITE FLOW Pale grey and greenish grey, fine grained, silicified and carbonatized with brecciated quartz-calcite stringers up to 2", few graphitic streaks down to 616.5'. Est. 1% sulphides at 605-625' and 3% at 625-639'.								

RUSTY ZONES AT:

141.0	141.2
142.5	142.7
146.0	149.0
161.0	161.2
162.0	162.2
163.0	165.0
168.0	171.0

LOST CORE AT:

548.0	549.0
557.4	558.0
559.5	561.0

Lost water circulated at 141' and regained it at 573' after hole was cemented at 573'

DIAMOND DRILL RECORD

HOLE NO. 68-PA-2 SHEET NO. 2

NAME OF PROPERTY _____
 HOLE NO. _____ LENGTH _____
 LOCATION _____
 LATITUDE _____ DEPARTURE _____
 ELEVATION _____ AZIMUTH _____ DIP _____
 STARTED _____ FINISHED _____

FOOTAGE	DIP	AZIMUTH	FOOTAGE	DIP	AZIMUTH

REMARKS _____

LOGGED BY *S. Guinard*

FOOTAGE		DESCRIPTION	SAMPLE			ASSAYS					
FROM	TO		NO.	% SULPHIDES	FOOTAGE		%	%	oz/TON	oz/TON	
					FROM	TO	TOTAL				
639	682	RHYOLITE FLOW AND CARBONATES Pale brownish-greenish grey, fine grained, est. 3% sulphides at 639-645' and 1% at 645-682'.									
682		END OF HOLE									

EM. 6-1168

LANGRIDGE LIMITED,