

Diamond Drilling



42A11NE0235 40 TULLY

010

Township of TULLY

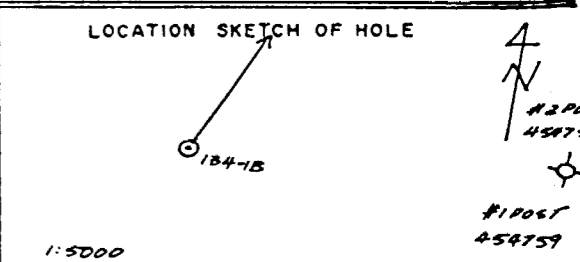
Report N^o 40

Work performed by: St. Joseph Exploration

Claim N ^o	Hole N ^o	Footage	Date	Note
P 454759	134-1	275.0'	Mar/78	(1)
	134-1A	393.0'	Mar/78	(1)
	134-1B	480.0'	Mar/78	(1)
P 492537-8	134-2	501.0'	Apr/78	(1)

Notes:

(1) #114-78

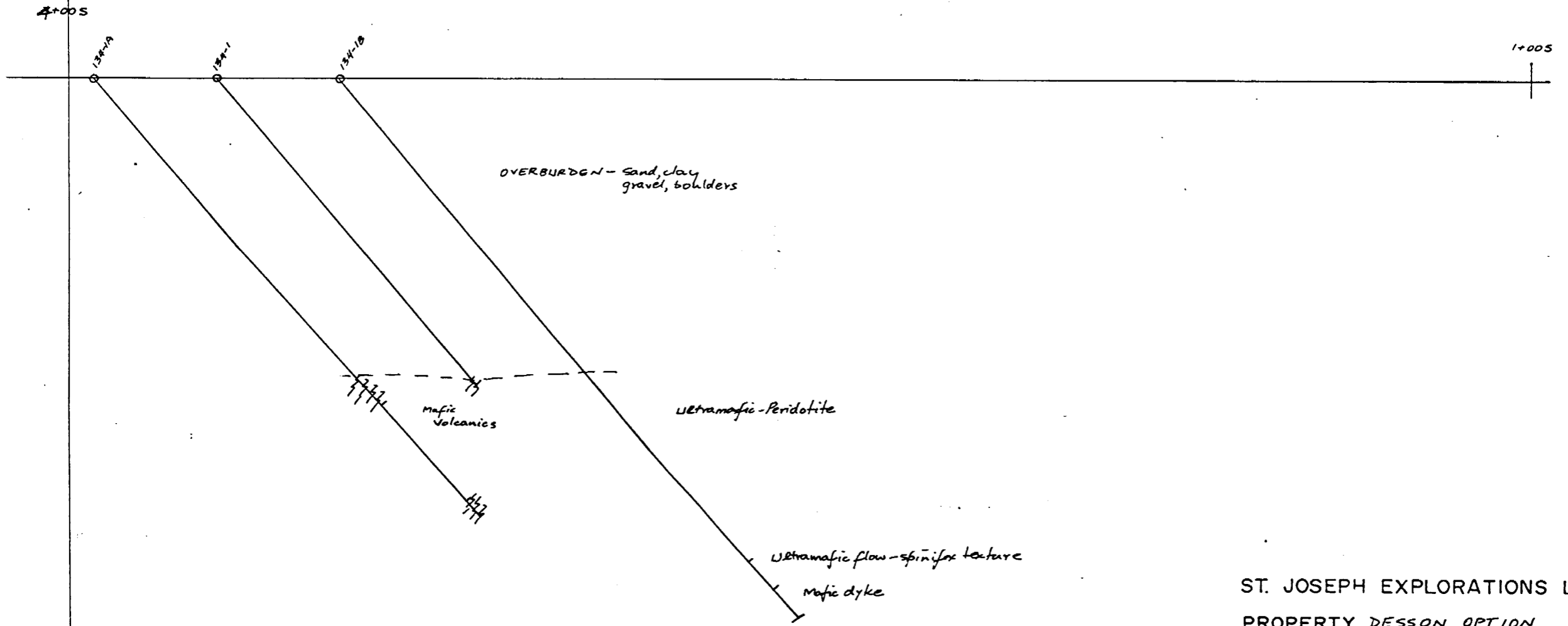
PROPERTY Desson Option	TP OR AREA Tully Twp.	AZIMUTH 025°	DATE STARTED March 21, 1978	CORRECTED DIP TESTS		LOCATION SKETCH OF HOLE 
PROJECT 134	LOT & CONC.	DIP -50°	DATE COMPLETED March 30, 1978	79.86	-50°	
CLAIM NO. 454759, 454758	CO-ORDINATES. L2W, 3+45S	LENGTH 146.30 m (480')	DRILLED BY Bradley Bros. Ltd.	121.92	-48°	
GRID NO. East Grid (1978)	Core Size - AQ	COLLAR ELEV.	LOGGED BY W. Ng-see-Quan			

METRES		SECTION I"=	DESCRIPTION	SAMPLE NO.	FROM	TO	LENGTH	ASSAYS					
FROM	TO							Au	Ag	Ni	Cu		
0	79.86		OVERBURDEN; clay, sand, gravel and boulders										
79.86	131.00		ULTRAMAFIC-PERIDOTITE; f. med. gr., dk, gy., serp., magnetite grains distributed along fractures and cleavage planes, asbestos occuring at right angles to veinlets, locally section is talcose, locally a "breccia texture" with lt. gy. "fragments" surrounded by f. gr. dk. gy. matrix, ground core 24.73m - 0.30m 99.36m - 0.30m 111.56m - 0.30m 114.91m - 0.61m	3087	91.24	91.74	0.50m	Tr	Tr	0.25	0.005		
				3088	117.65	118.65	1.0m	Tr	Tr	0.24	0.005		
131.00	138.68		ULTRAMAFIC FLOW; spinifex texture, lt. green, variable sizes of spinifex within flow, upper part of unit has appearance of flow bx.-top maybe uphole, tr. cp. with qtz. veins	3089	135.69	136.25	0.76m	Tr	Tr	0.053	0.003		
138.68	146.30		MAFIC DYKE - DIABASE; med. gr., gy										
146.30			END OF HOLE										
			76.20 m (250') drilled on claim 454759										
			70.10 m (230') drilled on claim 454758										
			Core stored at Canadaka Mines Ltd., Cobalt, Ontario.										

Wallace Ng-Selbrian

HOLE NO. 134-1, 134-1A, 134-1B

SECTION L2+00W



ST. JOSEPH EXPLORATIONS LIMITED
PROPERTY DESSON OPTION

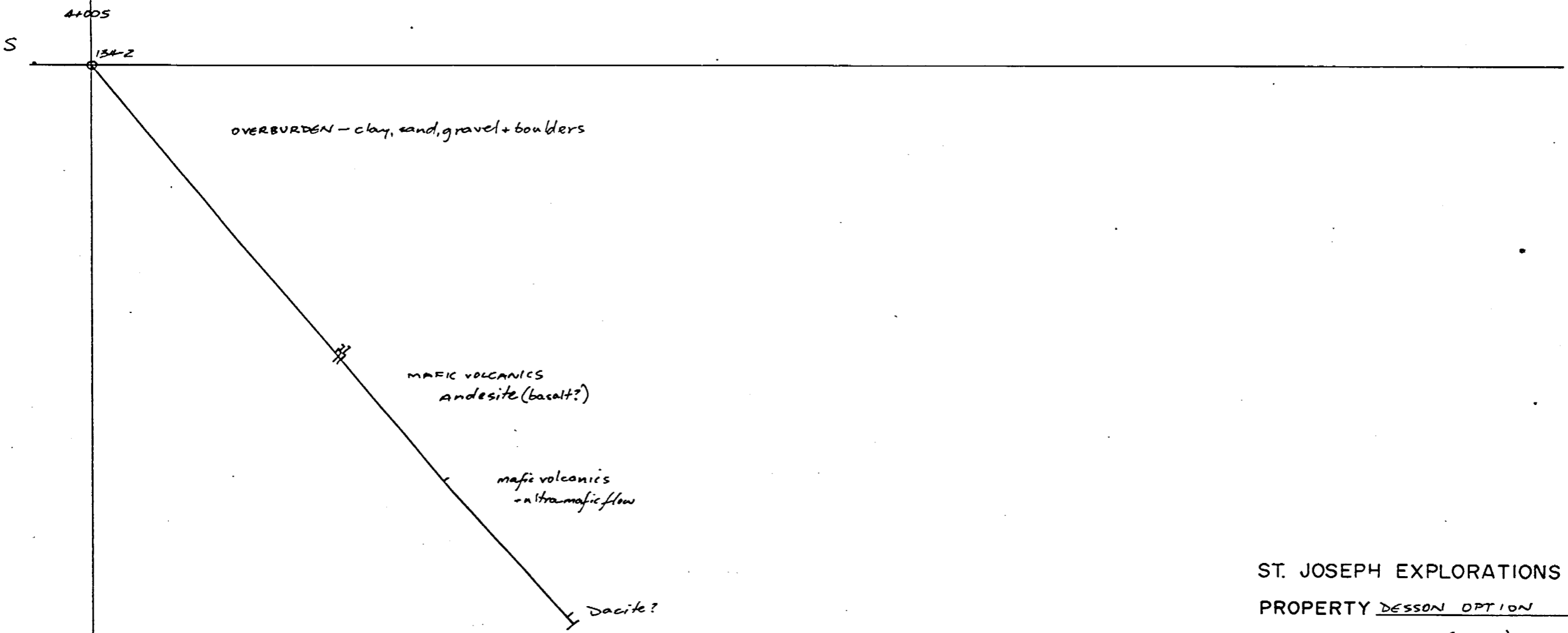
GRID EAST GRID (1978)

CO-ORD. L2+00W, 3+70S; ^{L2+00W L2+00W} 3+95S, 3+95S

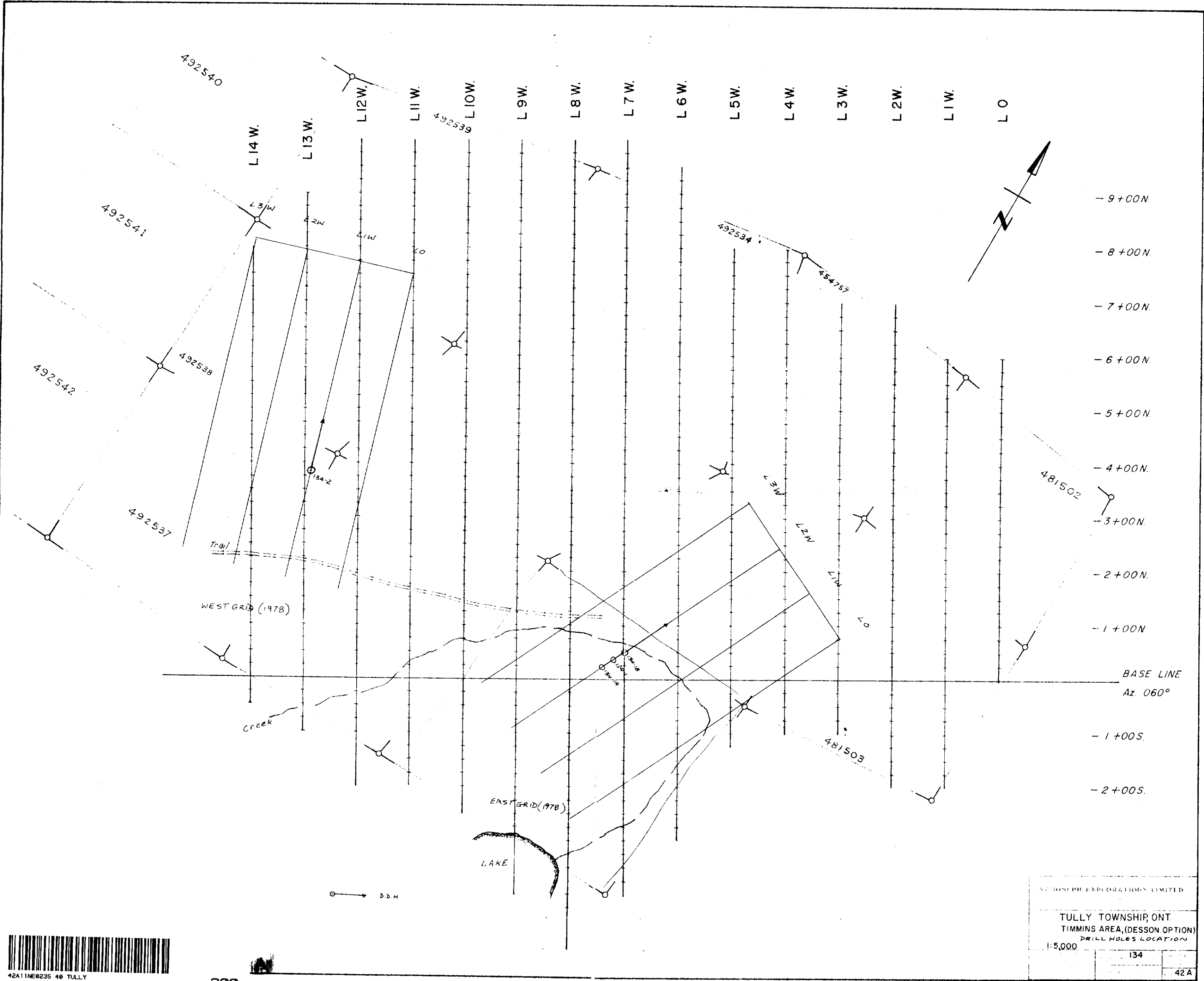
SCALE 1:1000 (1 cm = 10 m.)

HOLE NO. 134-2

SECTION L1+00W



ST. JOSEPH EXPLORATIONS LIMITED
PROPERTY DESSON OPTION
GRID WEST GRID (1978)
CO-ORD. L1+00W, 4+00S
SCALE 1:1000 (1cm = 10m)



Tully Tap. #114 Potentially

DD #40 Tully



42A11NE0235 40 TULLY

200

ST. JOSEPH EXPLORATIONS LIMITED		
TULLY TOWNSHIP, ONT.		
TIMMINS AREA, (DESSON OPTION)		
DRILL HOLES LOCATION		
1:5,000	134	42A