



42A11NW0001 10 PROSSER

010

PROSSER TOWNSHIP REPORT NO. 10

This file contains work performed by Texas Gulf Sulphur
Co. on claims:

P.55315	Hole # P-23-3	Dec/63	301'
P.55316	P-23-4	Dec/63	302'
P.55314	P-23-5	Dec/63	357'
P.55321	P-23-6	Sept/66	600'
P.55320	P-23-7	Sept/66	600'

2160'

5 DDH

Lot 8

Lot 7

Lot 6

P 55310

P 55311

P 55312

P 55313

P 55314

P 55315

P 55316

P 55317

P 55318

P 55319

P 55320

P 55321

Con. III

Con. II

PROSSER TWP.
PORCUPINE MINING DIVISION.

TEXAS GULF SULPHUR CO.

Drill hole location sketch.

Oct 1964.

scale 1" = 1000'

VK.

D. D. HOLE No. P 23 - 3

Timmins, Ont.
 Loc. Prosser 23 Dip collar : 45° Bearing collar : Grid N Length: 301'
2400 E : : : : Collar el. : : : :
500 N : : : : Bottom el. : : : :

Drilled by: Longyear Core size: AX Begun: Dec. 6 Ended: Dec 8/63 Logged by: KHD

Samples	Footage drilled				Geology
	From	To	Len.	Reg. %	
	0	36	36	0	Overburden
	36				Amygdaloidal TRACHYTE - greenish blue;
		86.3	50.3	100	chloritic in part. White & black amygdules.
	86.3				Amyg. TRACHYTE (as above) + stringers
					of massive sulphides (po, Py); less than 10%
2905 (composite					sulphide.
sample of sulphides					- at 88': sulphide stgs. & flow attitudes at
only from 107-129 ft.)					58° to core axis. Apparent dip 77° South.
					- 107-109': 50% Py, Po
					120-121': 50% Py, Po
		127	40.7	"	127-129': a few quartz stgs. + min. Po, Py
	127	145	18		TRACHYTE: green
	145				TRACHYTE: green, chloritic + stgs. of
2906					sulphide (po, Py); numerous Carbonate stgs.
(Composite sample of					146 - 149': 80% Sulphides (Py, Po)
sulphides only from					151.5 - 152.0': 60% Py
146-169 ft.)					160.5 - 161.3': 70% Py
		170	25	"	166.3 - 169.0': 40% Py
	170				Amyg. TRACHYTE - greenish blue; + a
					few small blebs Po, & stgs. of Py, Po
					176 - 182': 30% Py as stringers
					188 - 190': 20% Py
					212 - 215': 10% Py. minor Po
		230	60	"	221 - 225': 10% Po, Py
	230				RHYOLITE (Welded Tuff): mottled texture
					50% small, dark greeneyes within greyish
		301	71	"	green matrix. No sulphides
					END OF HOLE

K. H. Darke

D. D. HOLE No. P 23 - 4

Timmins, Ont.

Loc. Prosser 23 Dip collar : 45° Bearing collar : Grid South Length: 302!

2600 E

340 S

Drilled by: Longyear Core size: Ax Begun: Dec 11 Ended: Dec 13/64 Logged by: KHD

Samples	Footage drilled				Geology
	From	To	Lon.	Rec. %	
	0	80	80	0	Overburden: mainly clay
	80				Chloritic TUFF (Andesitic composition) - numerous, dark, chloritic streaks; some rough bedding; a few intercalated Siltstone layers.
		98	18		- Bedding at 80 ft. is 51° to core axis.
	98				* at 98 ft. appears to be a fault zone; contains bleached rock.
		100	2		
	100				Chl. TUFF (Andesitic) + one thin zone of Gabbro, fine grained, bleached in part. - a few Po stgs. at 100' in TUFF.
		109	9	50	
	109				RHYOLITE - massive, gray; + some chlorite alteration
		119.0	10	80	
	119	119.8	0.8	100	MASSIVE PYRITE
	119.8				SHALE - well banded black & dark grey layers; with a few Py stgs. & blebs along bedding planes. - 135 ft.: bedding at 53° to core axis - 154 ft.: " " 57° " " "
		155	35.2	"	
	155				SILTSTONE: dk. grey, impure in part
		210	55	"	170 - 210 ft.: well banded; a few Py nodules
Conductor	210				GRAPHITIC TUFF - contorted calcite stgs.; very impure rx. type; well defined but rough bedding; a few Py nodules
		236	26		
	236				GREENSTONE (Altered Trachyte); massive, chloritic + a few calcite stringers.
		302	66		
					END OF HOLE <i>K.H. Dark</i>

D. D. Hole No. P 23 -4

PROSSER TOWNSHIP

P-55321

SE 1/4, N 1/2, Lot 7, Con. II

D. D. HOLE No. P-23-6

Loc. 20+00E Dip collar: -50° Bearing collar: Grid South Length: 600'

3+50N Collar el. Bottom el.

Drilled by: BRADLEY BROS. Core size: AXT Begun: Sept. 9/66 Ended: Sept 15/66 Logged by: V. Kelly

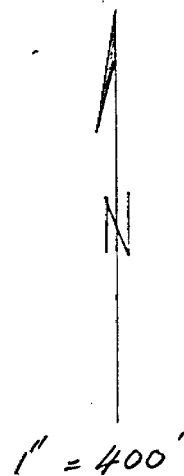
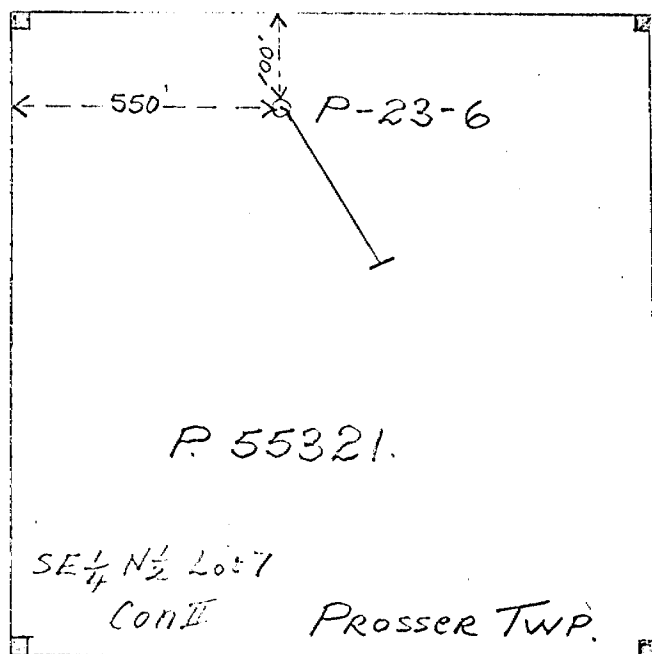
Table with columns: Samples, Footage drilled (From, To, Len., Rec. %), Geology. Rows include: OVERBURDEN, DACITE flow, Fairly massive, occ. vesicles. Occasional carbonate veinlets, DACITE TUFF, DACITE TUFF with minor agglomerate, Fragments up to 1/2" diameter. Minor folding. Faint foliation at 55° to core axis, DACITE TUFF. Sand seam at 242', DACITE TUFF with minor PY, DACITE TUFF and agglomerate. Minor shale bands, CONDUCTOR. Black shale or tuff. Minor graphite. Strongly foliated at 60° to core axis, DACITE TUFF and agglomerate in fine dark coloured tuff matrix, DACITE. Fairly uniform. 5% carbonate stringers, DACITE TUFF. Uniform. C.A. = 50°, END OF HOLE.

Handwritten signature

PROSSER TOWNSHIP (SE 1/4 N 1/2 Lot 7. Con II)
Porcupine Mining Division

D.D.H. P-23-6

DIP collar -50°. Bearing 150°. Depth 600ft.



Texas Gulf Sulphur Company
Prosser Township
Drill Hole
Location Sketch

V.K. Oct. 66

PROSSER TOWNSHIP

P-55320

SW 1/4, N 1/2, Lot 7, Con. II

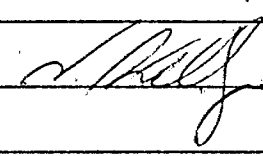
D. D. HOLE No. P-23-7

Loc. 6+00E Dip collar : -50° Bearing collar : 115° Length: 600'

3+00N : : Collar el. :

Bottom el. :

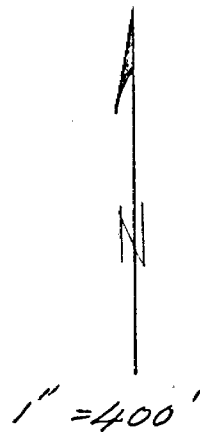
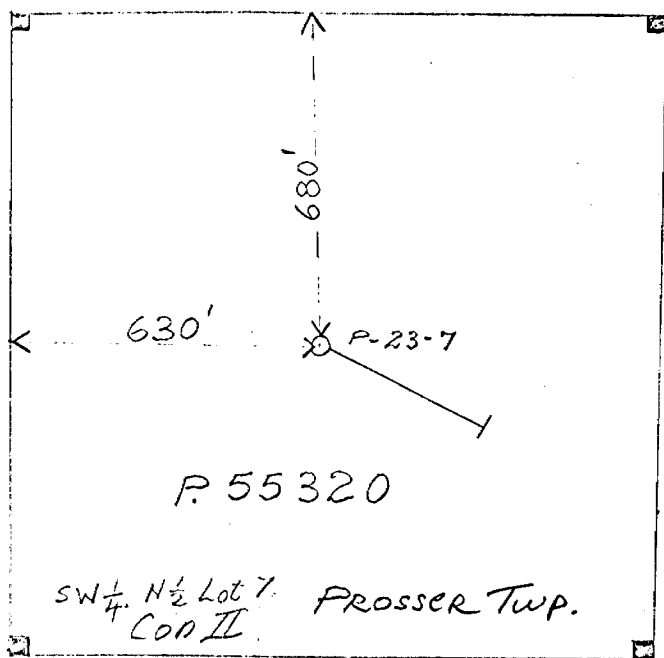
Drilled by: BRADLEY BROTHERS Core size: AXT Begun Sept 17/66 Ended: Sept 22/66 Logged by: V. Kelly

Samples	Footage drilled				Geology
	From	To	Len.	Rec. %	
	0	136	136	0	
	136	195	59	98	Massive, hard Dacite. Moderately fractured.
	195	225	30		DACITE TUFF. Slight shale bands at 35° to core axis.
	225	295	70		DACITE. Fairly massive. Faint foliation at 35° to core axis.
	295	313	18	98	RHYODACITE, massive, Minor fracturing 10% carbonate, 3% fine PY.
	313	315	2	0	Lost core.
	315	370	55	98	DACITE TUFF with minor dark shale bands and shreds.
	370	371	1		Similar to above with minor graphite.
	371	420	49		DACITE TUFF. Minor shaly intercalcation. C.A.=35°. Minor PY at 414 and 418.
	420	425	5		DACITE TUFF. 15% nodular PY. C.A.=40°
	425	534	109		DACITE TUFF. Occasional minor nodular PY.
	534	536	2	0	Lost core.
	536	600	64	98	DACITE TUFF. Core angle = 40°
END OF HOLE					
					

PROSSER TOWNSHIP (SW 1/4 N 1/2 Lot 7. Con II)
PORCUPINE MINING DIVISION.

D.D.H. P-23-7

DIP COLLAR - 50° . BEARING 115° . DEPTH 600 FT.



Texas Gulf Sulphur Company
PROSSER TOWNSHIP
Drill Hole
Location Sketch.

v.k. Oct. '66