



010

PROPERTY

The assessment work herein filed covers 4 claims located in Kidd Township in the Porcupine Mining Division of Ontario.

The 4 claims, totalling approximately 160 acres, are numbered:

	P.57681
	P.57682
	P.57683
	P 57684

and cover the N $\frac{1}{2}$ of Lot 7, Concession 6.

LOCATION AND ACCESS

The property is located approximately one mile west of the Texas Gulph Sulphur discovery. It can be reached by tractor from the Texas Gulph access road.

GEOLOGY

No outcrops are known to occur on this property. It is assumed that the property is underlain by Precambrian lavas and sediments which have been intruded by basic plugs and dykes.

GEOPHYSICAL SURVEY

The property was surveyed in June, 1964 using magnetic and electromagnetic field techniques along a picket line grid consisting of a north-south base line with 14 east-west cross lines spaced at 200 foot intervals.

Sheridan Geophysics Limited

- 2 -

A gravity survey followed in February, 1965 using again the same picket line grid, but readings taken along every second east-west cross line only.

To complement the geophysical picture, a second electromagnetic survey was carried out in April, 1965 taking readings along cross lines cut in a north-south direction, again spaced at 200 foot intervals.

Electromagnetic Survey

The electromagnetic survey employed the Sheridan-Kelk Dual Frequency Magniphase Electromagnetic Instrument (Instrument No. 18) operated in the horizontal coil configuration with a transmitter-receiver separation of 300 feet. The instrument which has an output of 1.5 watts may be operated at either 800 or 2,400 cycles per second. In general, readings of the amplitude and phase of the resultant field at the high frequency (2,400 c.p.s.) were recorded at station intervals of 100 feet. In anomalous areas the station interval was reduced to 50 feet and readings at both the high and low frequencies (800 c.p.s.) were recorded.

Plotted on the maps at the scale of 1" = 200 feet are the high frequency phase profiles. The scale of the phase profiles equals 50 units to the inch. A total of 850 amplitude-phase measurements were recorded along the east-west

Sheridan Geophysics Limited

- 3 -

and north-south picket lines.

Conductivity Determination

The ratio "r" refers to the ratio of the low frequency phase response to the high frequency phase response. In general, the ratio increases as the conductivity of the detected conductor increases. A ratio of 0.8 to 1.0 is considered to represent an excellent conductor, a ratio of 0.5 to 0.8 a moderate conductor, and a ratio less than 0.5 a poor conductor.

Magnetometer Survey

The magnetometer survey employed an Askania Torsion Balance Magnetometer with a scale constant of 2.36 gammas per scale division and a sensitivity of 2.3 gammas. The magnetic responses as plotted on the accompanying map, are corrected for diurnal variations and instrument drift and are contoured at a 100 gamma interval.

Readings were taken generally at 100 foot intervals with 25 or 50 foot stations in anomalous areas. A total of 605 readings were recorded.

Gravity Survey

For this survey, a Worden Gravity Meter (Instrument No. 689) with a scale constant of 0.09770 milligals per scale division, was used. All readings were corrected for

Sheridan Geophysics Limited

- 4 -

diurnal, drift, elevation and latitude and the results shown in milligals on the map were contoured at 0.25 milligals.

DISCUSSION OF RESULTS

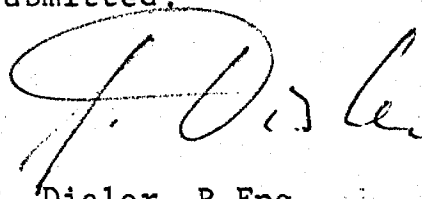
The east-west electromagnetic survey indicated two parallel anomalies trending in a north-south direction over a distance of approximately 800 feet. The calculated conductivity "r" for the two anomalies varies between 0.53 and 1.00, and the conductor may therefore be classified as moderate to good.

The electromagnetic survey along the north-south lines indicates a poor to moderate conductor ($r = 0.36 - 0.75$) in the south-east corner of the property.

The magnetometer survey contoured at 100 gamma intervals, shows two anomalies in the north-west and the south-east corners of the property. Both have a magnetic intensity relief in the order of 500 gammas and taking into consideration the shape of these anomalies, they both may possibly represent a basic intrusive.

The gravity results contoured at 0.25 milligals show a gravity high in the north-west corner of the property (17.75 milligals). The general trend of the contour lines is north-west to south-east.

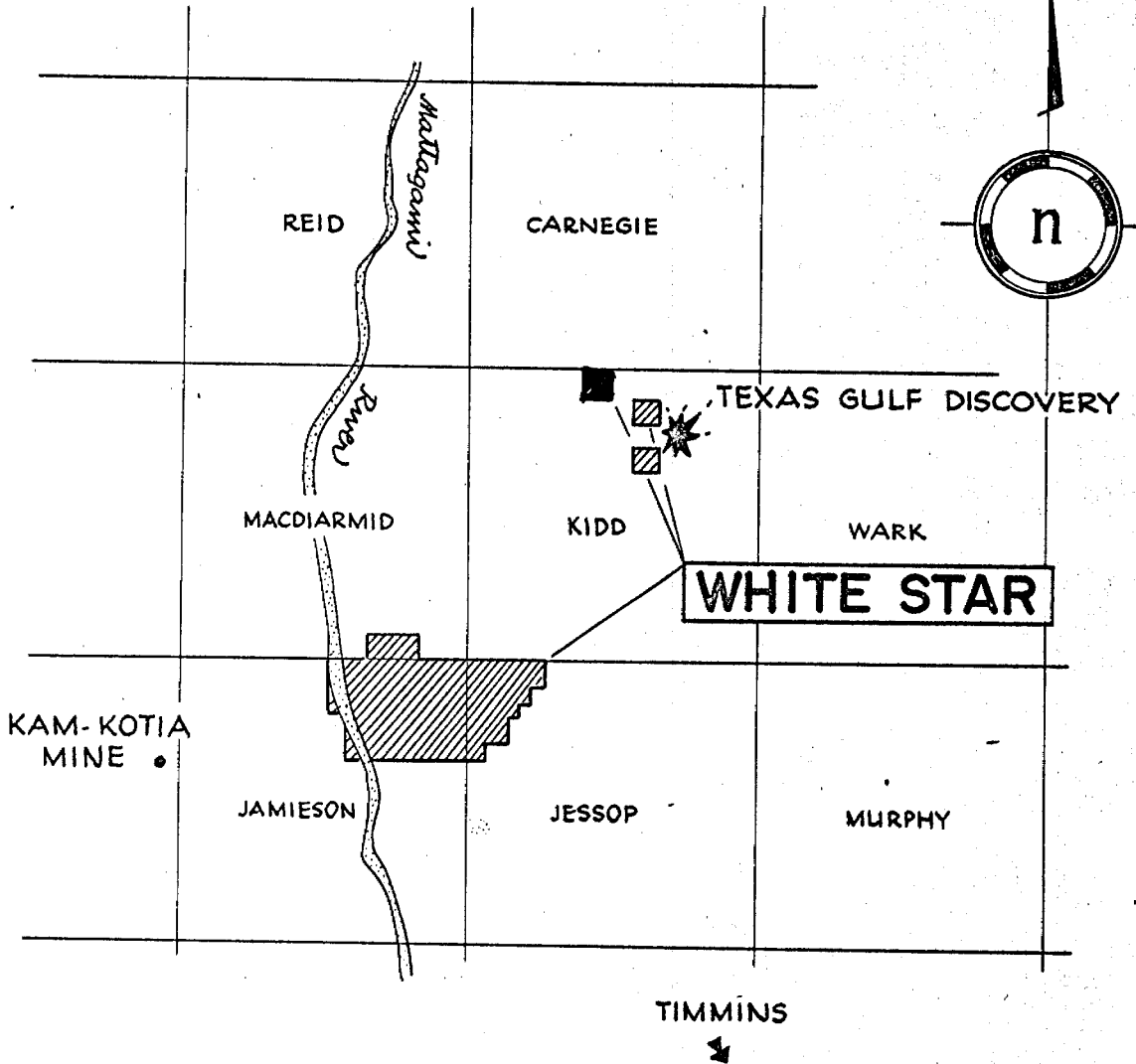
All of which is respectfully submitted.



G. Disler, P.Eng.

August 31, 1966.

LOCATION MAP



WHITE STAR COPPER MINES LTD

KIDD TWP - MACDIARMID TWP - JESSOP TWP PROPERTIES, TIMMINS AREA
ONTARIO





020

Sheridan Geophysics Limited

March 29th, 1966.

SUMMARY REPORT
WHITE STAR COPPER MINES LIMITED
KIDD TOWNSHIP - "C" GROUP

PROPERTY

The assessment work herein filed covers 4 claims located in Kidd Township in the Porcupine Mining Division of Ontario.

The 4 claims, totalling approximately 160 acres, are numbered:

P. 57681
P. 57682
P. 57683
P. 57684

and cover the N $\frac{1}{2}$ of Lot 7, Concession 6.

LOCATION AND ACCESS

The property is located approximately one mile west of the Texas Gulph Sulphur discovery. It can be reached by tractor from the Texas Gulph access road.

GEOLOGY

No outcrops are known to occur on this property. It is assumed that the property is underlain by Precambrian lavas and sediments which have been intruded by basic plugs and dykes.

GEOPHYSICAL SURVEYS

The property was surveyed in June, 1964 using magnetic and electromagnetic field techniques along a picket line grid

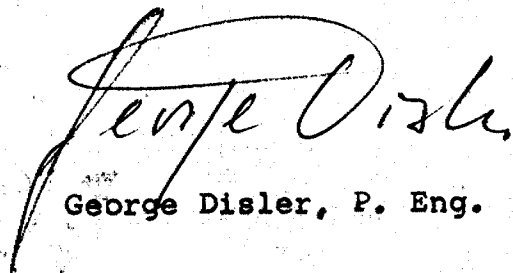
Sheridan Geophysics Limited

- 2 -

consisting of North/South base line with East/West cross lines spaced at 200 foot intervals. Readings are taken at 100 foot intervals with additional readings at 25 and 50 feet in areas with anomalous indications.

A gravity survey followed in February, 1965 using again the same picket line grid, but readings were taken along every second East/West cross line only.

To complement the geophysical picture, a second electromagnetic survey was carried out in April, 1965, again using the Sheridan-Kelk magniphase instrument, but taking readings along cross lines cut in a North/South direction.



George Disler, P. Eng.



ONTARIO
DEPARTMENT OF MINES

63.1916 *
64
PORCUPINE MINING DIVISION

127 THIRD AVENUE
TIMMINS, ONTARIO

April 13th, 1966



42A11NW0572 63.1916 KIDD

900

Mr. R. V. Scott,
Director,
Mining Lands Branch,
Ontario Department of Mines,
Parliament Buildings,
Toronto 2, Ontario

Dear Sir:

Re: Mining Claims P-57681-84[✓] incl.

An assessment work credit of 80 days, geophysical, was recorded on each of the above mining claims on March 30th.

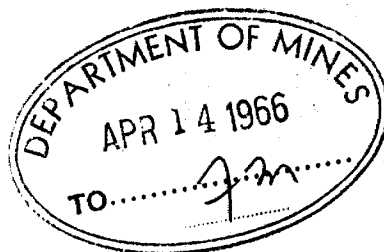
These claims are recorded in the name of J. P. Sheridan, Suite 1606, 4 King Street West, Toronto 1, Ontario.

The reports and maps are being forwarded direct to the Department.

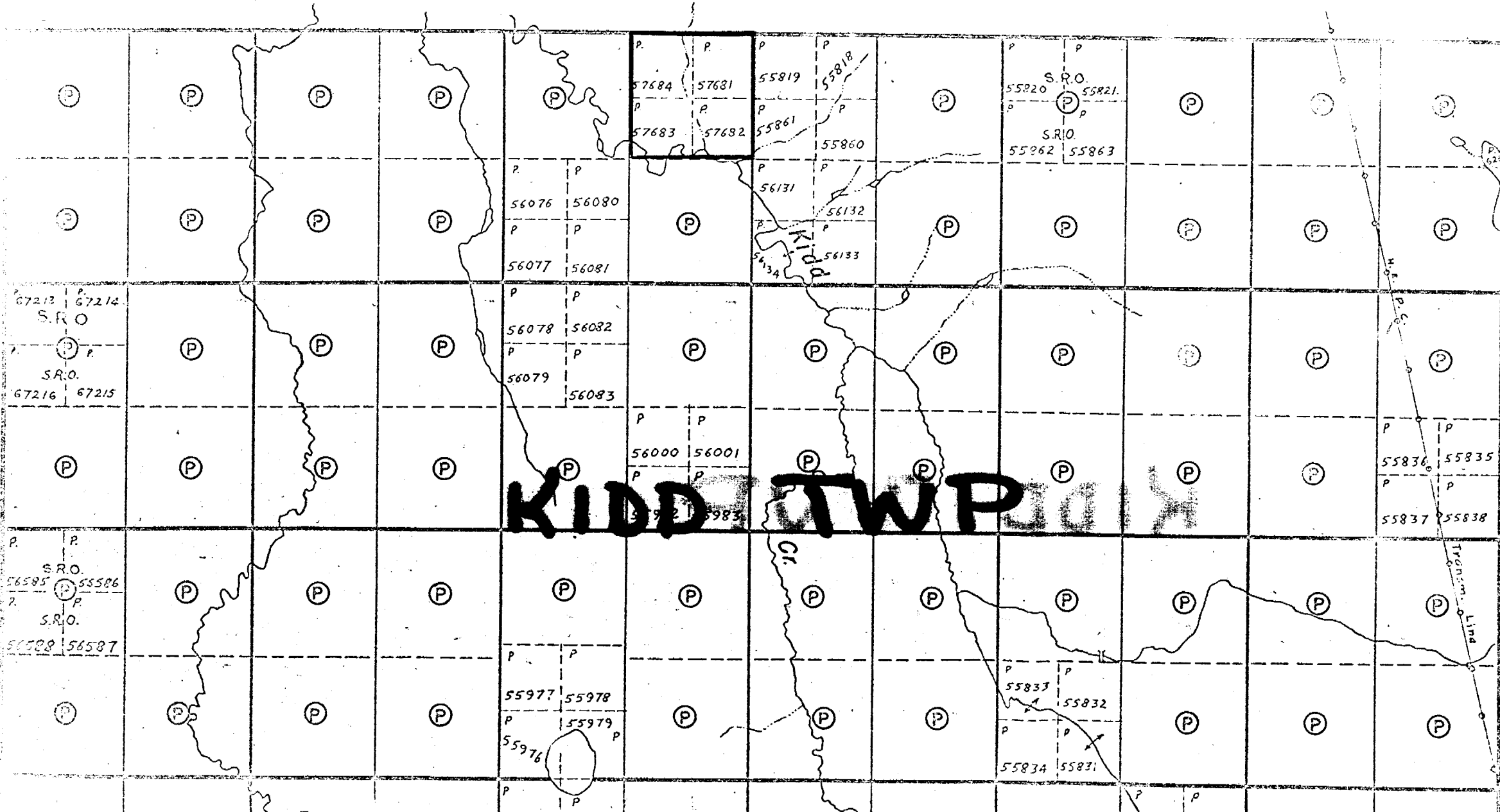
Yours very truly,


C. D. Egerton,
Mining Recorder.

CDE/jt



Carnegie Twp.



KIDD TWP

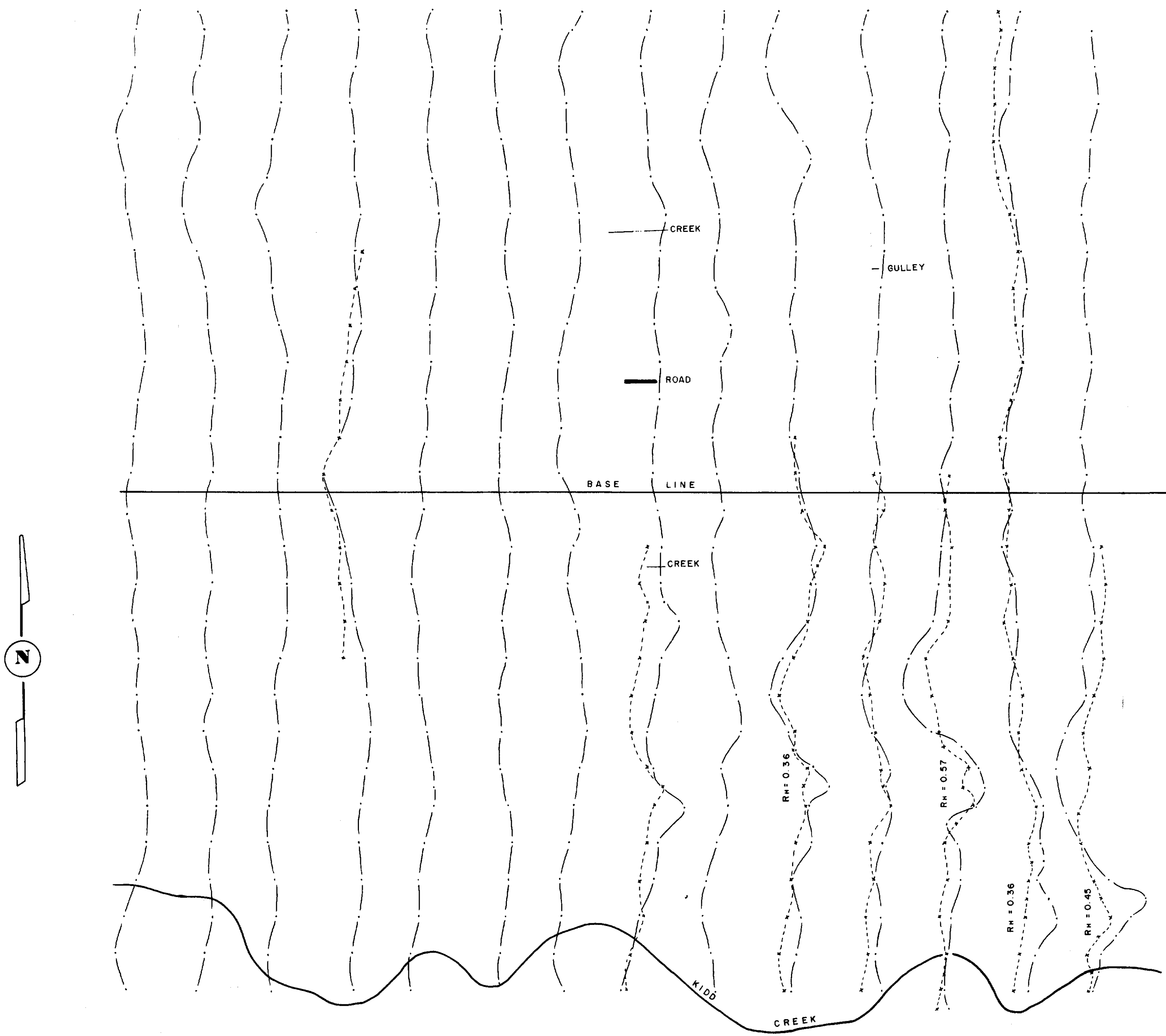
V
V
V
V
V

rk Twp

CARNEGIE TWP.

LOT POST

KIDD TWP. L 26+40 W L 24 W L 22 W L 20 W L 18 W L 16 W L 14 W L 12 W L 10 W L 8 W L 6 W L 4 W L 2 W L-O-W



WHITE STAR COPPER MINES LTD

MAGNIPHASE SURVEY (300')

BY SHERIDAN GEOPHYSICS

GROUP "C" - N 1/2 LOT 7 - CONCESSION VI

KIDD TWP. - PORCUPINE MINING DIV. ONT.

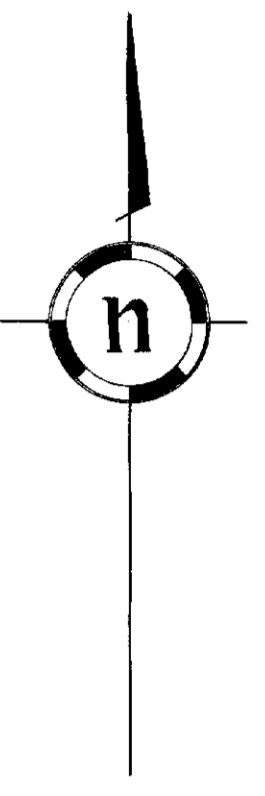
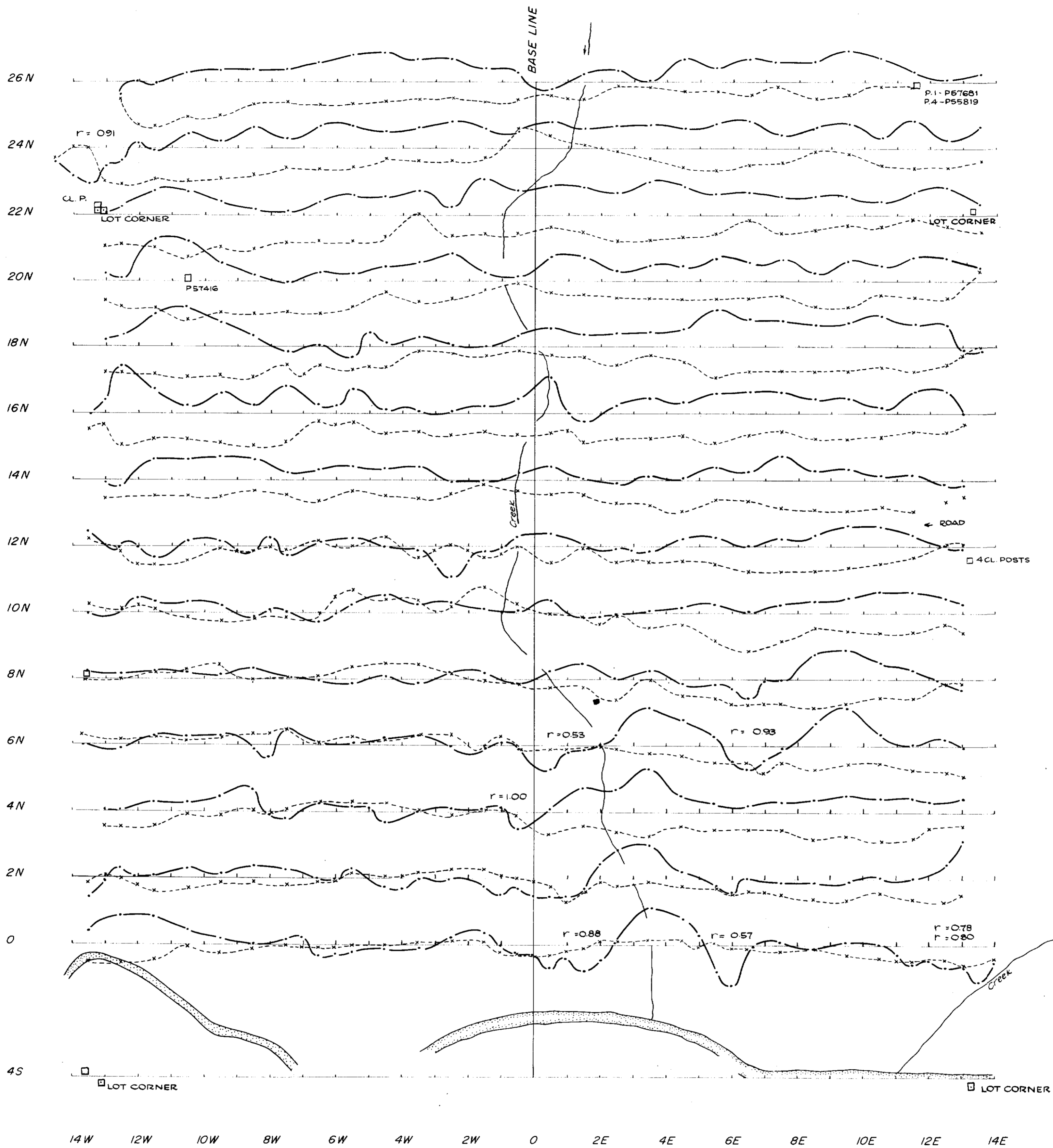
Frank O'Brien

x-----x PHASE 1" = 50 UNITS HI. - 195 LOW - 185
 ----- AMPLITUDE 1" = 50 UNITS HI. - 145 LOW - 160

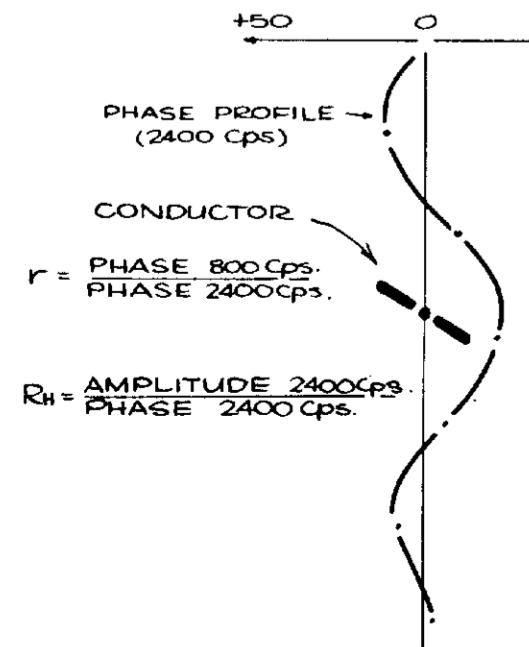
SCALE: 1" = 200'



42A11N0572 63.1916 KIDD



LEGEND
Scale: 1" = 50 units



GROUP 'C'
WHITE STAR COPPER MINES LIMITED
KIDD TOWNSHIP, PORCUPINE MINING DIVISION, ONT.
John O'Shea
E.M. MAGNIPHASE SURVEY
NORTH 1/2, LOT 7, CONCESSION VI

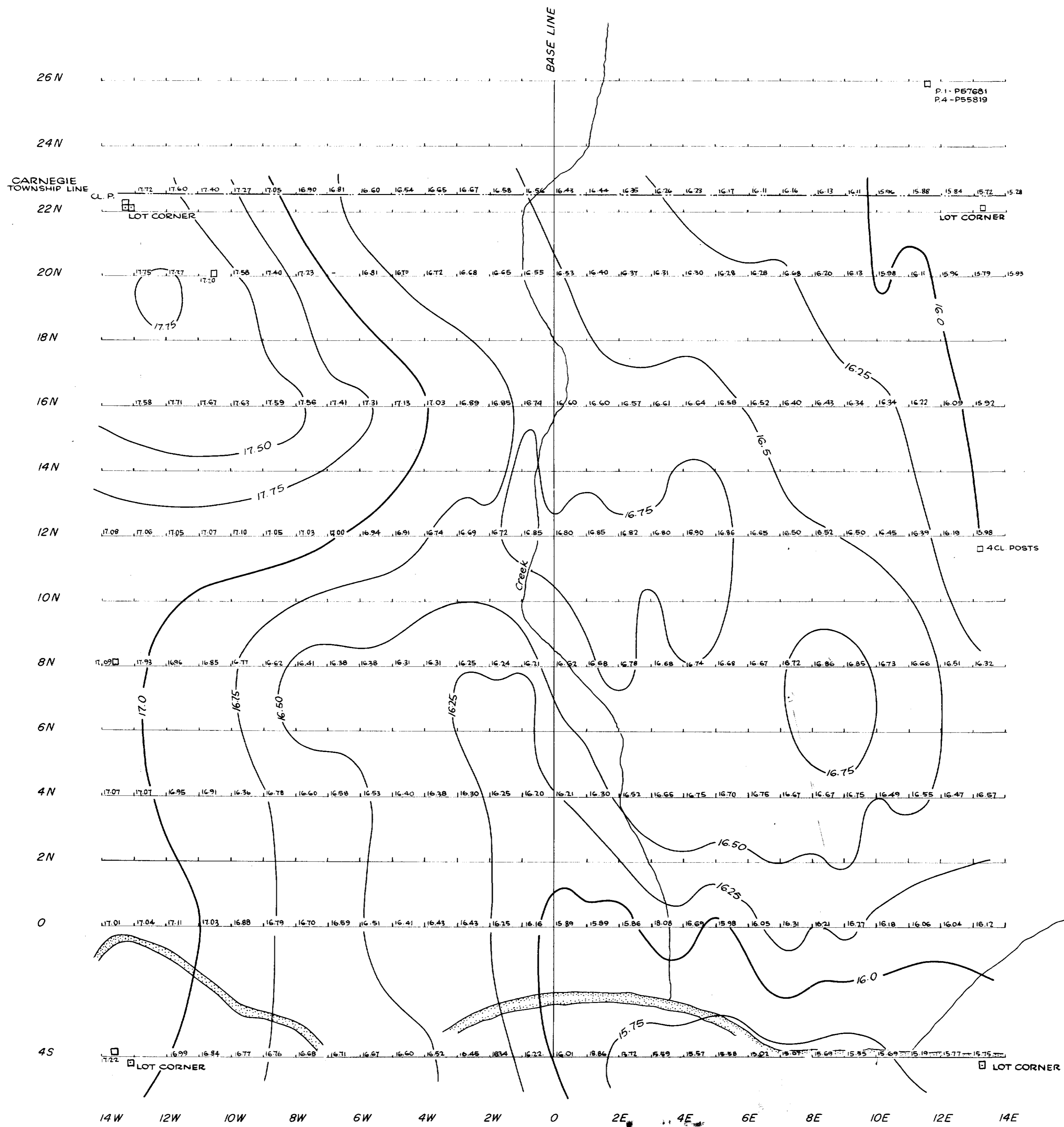


INSTRUMENT: SHERIDAN-KELK MAGNIPHASE

63-1916

June '65





LEGEND

CONTOUR INTERVAL 0.25 MILLIGALS

INSTRUMENTS : TRANSIT NO. 6278 (ZUIHO)
GRAVITY METER (WORDEN) NO. 689

N.B. 10.00 MILLIGALS ADDED TO ALL READINGS.

GROUP 'C'

WHITE STAR COPPER MINES LIMITED
KIDD TOWNSHIP, PORCUPINE MINING DIVISION, -ONT.

GRAVITY SURVEY

NORTH 1/2, LOT 7, CONCESSION VI



63-1916



42A11M8572 63-1916 K100