



42A11NW0986 18 KIDD

010

Diamond Drilling

Township of Kidd

Report NO: 18

Work performed by: Hamcon Mines Ltd.

Claim NO	Hole NO	Footage	Date	Note
P 56134	HC #1	842'	Jan/65	(1)

Notes:

(...) date placed on file

(1) (Aug/73) Hamcon controlled by Chance Mg.

Lot 7

Lot 6

13 W

10 W

8 W

6 W

4 W

2 W

0 + 00

2 E

4 E

6 E

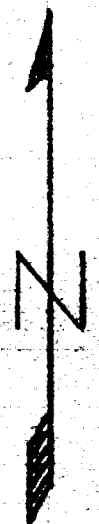
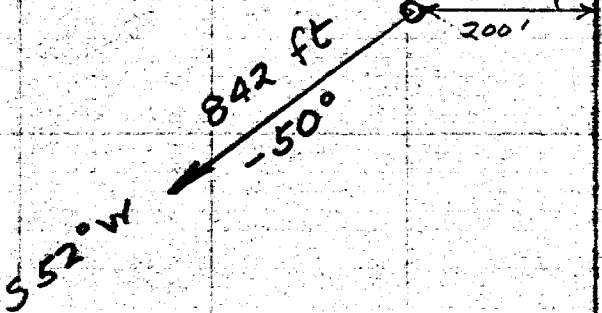
8 E

10 E

12 E

\*1 Post

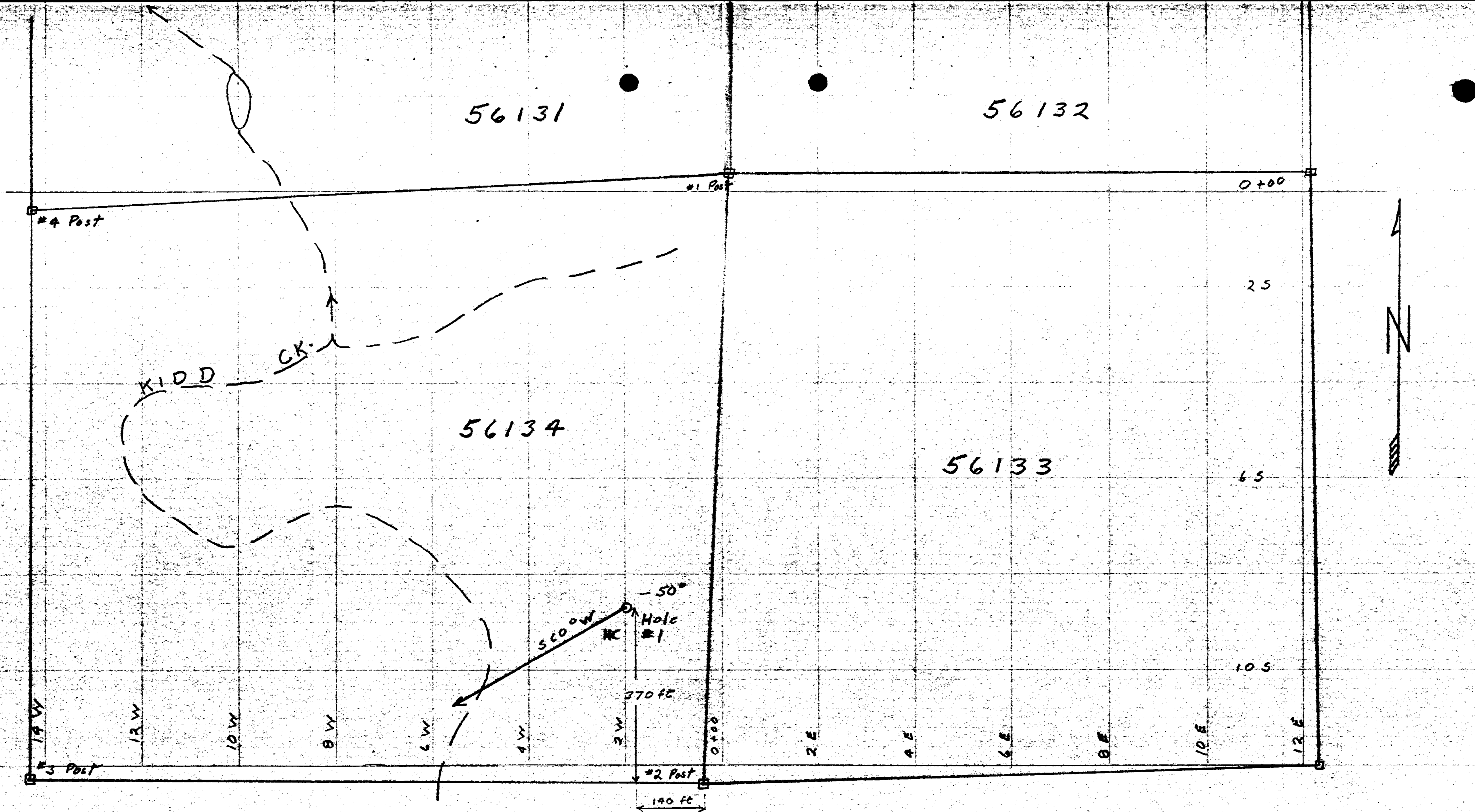
870 ft



Concession VI

Concession V

HAMCON MINES Ltd.  
 Plan of Diamond Drill Hole  
 South Half Lot 6, Concession VI  
 KIDD TWP  
 Scale: 1 in = 200 ft  
 A. Bullis



CHANCE MINING AND EXPLORATION COMPANY LTD.  
 HAMCON NO. 2 PROPERTY  
 SOUTH HALF LOT 6, CON. VI, KIDD TWP  
 SCALE: 1 INCH = 200 FEET

A. R. Bullis

CHANCE MINING AND EXPLORATION COMPANY LTD.

Property HAMCON #2

KIDD TWP.

P56134

## DIAMOND DRILL RECORD

Hole No. HC #1 Sheet No. 1 Lat. 8 + 70 S Total Depth 842'  
 Section \_\_\_\_\_ Dep. 2 + 00 W Elev. Collar \_\_\_\_\_  
 Date begun JANUARY 23, 1965 Bearing 290° Elev. Bottom \_\_\_\_\_  
 Date finished JANUARY 30, 1965 Angle -50°

DEPTH FEET	FORMATION	SAMPLE NO.	WIDTH OF SAMPLE	GOLD %	SLUDGE GOLD. %
0-115	OVERBURDEN 0-100' CLAY 100-115' SAND				
115-302.5	ANDESITE: LIGHT GRAYISH GREEN SOFT APHANITIC TO FINE GRAINED, SLIGHTLY SCHISTOSE @ 45° TO CORE, CUT BY OCCASIONAL THIN QUARTZ AND CARBONATE STRINGERS, OCCASIONAL SMALL SPECK OR CUBE PYRITE				
302.5-305.5	SILICIFIED TUFF: FAIRLY WELL BANDED GRAY GREEN, GRAPHITIC, POSSIBLY SHEARED AND CONFORMABLY SILICIFIED ANDESITE, ANGLE BANDING TO CORE 40°-45°, BOTH FINE AND COARSE PYRITE, MOSTLY CONFORMABLE 5-10%	82	3.5		
305.5-315	GRAPHITIC ARGILLITE: BLACK, APHANITIC, FINELY BONDED OR SHEARED @ 35°-45° TO CORE 3-5% CONFORMABLE PYRITE				
		305.5-309.0	83	3.5	
		309.0-315.0	84	6.0	

Property HAMCON #2

## DIAMOND DRILL RECORD

Hole No. HE #1 Sheet No. 2 Lat. \_\_\_\_\_ Total Depth \_\_\_\_\_  
 Section \_\_\_\_\_ Dep. \_\_\_\_\_ Elev. Collar \_\_\_\_\_  
 Date begun \_\_\_\_\_ Bearing \_\_\_\_\_ Elev. Bottom \_\_\_\_\_  
 Date finished \_\_\_\_\_ Angle \_\_\_\_\_

DEPTH FEET	FORMATION	SAMPLE NO.	WIDTH OF SAMPLE	GOLD \$		SLUDGE GOLD \$	
<u>315.0-410.7</u>	<u>TUFF: LIGHT TO DARK GRAY, INTERMEDIATE TO ACID TUFF, BEDDING OR LINEATION @ 45°-60°, OCCASIONAL CONFORMABLE GRAPHITIC SLIP, APHANITIC TO MED. GR. 5-10% PYRRHOTITE IN THIN LENSES</u>	<u>85</u>	<u>2.9'</u>				
<u>410.7-412</u>	<u>GRAPHITIC ARGILLITE: BLACK, APHANITIC FINELY BEDDED OR SHEARED @ 50°-60° TO CORE, HARD, SILICEOUS OR SILICIFIED. 15-20% PYRRHOTITE IN THIN CONFORMABLE SEAMS AND LENSES</u>	<u>86</u>	<u>1.3'</u>				
<u>412-413</u>	<u>RHYOLITE TUFF: LIGHT TO DARK GRAY WELL BANNED @ 50°-60° TO CORE</u>						
<u>413-517</u>	<u>RHYOLITE AGGLOMERATE: ACID, OCCASIONALLY INTERMEDIATE, ANDESITIC. LIGHT TO DARK GRAY OCCASIONALLY GREENISH GRAY. FRAGMENTS SUB ANGULAR TO ROUNDED, ELONGATED, ORIENTED @ 45° TO 60° TO CORE. FRAGMENTS UP TO 1" GENERALLY 2-6mm IN SILICEOUS OCCASIONALLY SLIGHTLY GRAPHITIC MATRIX. SOME TIMES POORLY BANNED, TUFF AGED 2. MINOR THIN CONFORMABLE SEAM Po. occ. Py xll &lt; 1% Sul.</u>						

Property HAMCON # 2

## DIAMOND DRILL RECORD

Hole No. HC # 1 Sheet No. 3 Lat. \_\_\_\_\_ Total Depth \_\_\_\_\_  
 Section \_\_\_\_\_ Dep. \_\_\_\_\_ Elev. Collar \_\_\_\_\_  
 Date begun \_\_\_\_\_ Bearing \_\_\_\_\_ Elev. Bottom \_\_\_\_\_  
 Date finished \_\_\_\_\_ Angle \_\_\_\_\_

DEPTH FEET	FORMATION	SAMPLE NO.	WIDTH OF SAMPLE	GOLD %	SLUDGE GOLD. %
517-652	<p><del>SAND</del> TALC-CARBONATE ROCK: MOTTLED LIGHT GRAY TO GRAY GREEN, VERY SOFT, FINE TO MEDIUM GRAINED ROCK, OCCASIONALLY SOMEWHAT LINEATED AT 30° TO 45° TO CORE BUT USUALLY NEAR MASSIVE. THE ROCK APPEARS TO CONSIST OF ABOUT 50-60% WHITE CARBONATE, 30-45% TALC, 5-10% CHLORITE WITH POSSIBLE MINOR SERICITE AND SERPENTINE. IN PLACES THE ROCK SEEMS TO HAVE BEEN BRECCIATED WITH ROUNDED TO SUB ANGULAR PATCHES SURROUNDED BY MATERIAL OF SLIGHTLY DIFFERENT TEXTURE OR GRAIN SIZE BUT OF SIMILAR COMPOSITION. SOME SECTIONS SEEM TO HAVE CONSIDERABLE INTRODUCED CARBONATE. ROCK CONTAINS VERY OCCASIONAL SPECKS OF PYRITE AND PYRRHOTITE AND DOES NOT SEEM NOTICABLY MAGNETIC.</p>				
652-727	<p>RHYOLITE AGGLOMERATE: SIMILAR TO 443-517 ORIENTATION OF FRAGMENTS TO CORE ABOUT 45° SPECKS PYRITE THROUGHOUT &lt; 10% SULFIDE</p>				

Property HAMCON # 2

## DIAMOND DRILL RECORD

Hole No. HC # 1 Sheet No. 4 Lat. \_\_\_\_\_ Total Depth \_\_\_\_\_  
 Section \_\_\_\_\_ Dep. \_\_\_\_\_ Elev. Collar \_\_\_\_\_  
 Date begun \_\_\_\_\_ Bearing \_\_\_\_\_ Elev. Bottom \_\_\_\_\_  
 Date finished \_\_\_\_\_ Angle \_\_\_\_\_

DEPTH FEET	FORMATION	SAMPLE NO.	WIDTH OF SAMPLE	GOLD \$	SLUDGE GOLD. \$
727-758	GRAPHITIC ARGILLITE: BLACK, FINELY BANNED VARIABLE AMOUNTS OF PYRITE, GENERALLY IN CONFORMABLE SEAMS, SOMEWHAT SILICIFIED				
	727-733 ARGILLITE INTRICATELY CRUMPLED AND DRAG FOLDED, OCCASIONAL SPECK AND SEAM PYRITE, GENERALLY CONFORMABLE TO CRUMPLING, OCCASIONAL CROSSCUTTING SEAM < 1% Py				
	733-738.5 ARGILLITE LESS CRUMPLED, MINOR DRAG FOLDS BANDING TO CORE AVERAGES 45° 3-5% PYRITE	88	5.5'		
	738.5-743.5 WHITE QUARTZ VEIN WITH MINOR GRAPHITIC INCLUSIONS, APPEARS BARREN	89	5.0'		
	743.5-750.0 ARGILLITE SOMEWHAT CRUMPLED AND SILICIFIED, CONFORMABLE PYRITE 3-5%	90	6.5'		
	750.0-758.0 ARGILLITE SILICIFIED BANDING AT 45° WITH 5-10% CONFORMABLE PYRITE IN THIN SEAMS	91	8.0		
758-766	RAYOLITE TUFF: APHANTIC TO FINE GRAINED, FAIRLY WELL BANNED, LIGHT TO DARK GRAY, OCCASIONAL GRAPHITIC SLIP, ODD COARSE CUBE PYRITE				

Property HAMCON # 2

## DIAMOND DRILL RECORD

Hole No. HC #1 Sheet No. 5 Lat. \_\_\_\_\_ Total Depth \_\_\_\_\_  
 Section \_\_\_\_\_ Dep. \_\_\_\_\_ Elev. Collar \_\_\_\_\_  
 Date begun \_\_\_\_\_ Bearing \_\_\_\_\_ Elev. Bottom \_\_\_\_\_  
 Date finished \_\_\_\_\_ Angle \_\_\_\_\_

DEPTH FEET	FORMATION	SAMPLE NO.	WIDTH OF SAMPLE	GOLD \$	SLUDGE GOLD \$
766-790	RHYOLITE: HARD, BUFF COLOURED, APHANTIC TO FINE GRAINED, LARGELY MASSIVE, FEW MINOR (UP TO 2") GRAY TUFFACEOUS BANDS @ 45°, BECOMING AGGLOMERATE AT BOTTOM				
790-842	ANDESITE: APHANTIC TO FINE GRAINED GRAY TO GRAY GREEN, RELATIVELY SOFT, OCCASIONALLY SOMEWHAT TUFFACEOUS WITH BANDING @ 45°, ODD SPECK PYRITE.				
842	END OF HOLE				
LOGGED BY G. W. GRANT					
<div style="display: flex; justify-content: space-around;"> <span><i>G. W. Grant</i></span> <span><i>G. W. Grant</i></span> </div>					
DRILLING BY N. MORRISSETTE DIAMOND DRILLING LTD.					
AX CORE					
115' AX CASING LEFT IN HOLE					



SW

AZ. 240°

HC-1

NE

Surface

-50'



-200'

Andesite

Graphitic Argillite

Tuff

-400'

Rhyo. Agglomerate

Talc. Carb. Rock (U.B.)

-600'

Rhyo. Agglomerate

Graphitic Argillite

Tuff

Rhyolite

Andesite

842'

-800'

-1000'

**CHANCE MINING DRILL HOLE**

DRILLED 1965

Scale: 1" = 200'

Sept. 19, 1977

R.R. Guntter