

DIAMOND DRILLING



42A11SE0072 30 HOYLE

010

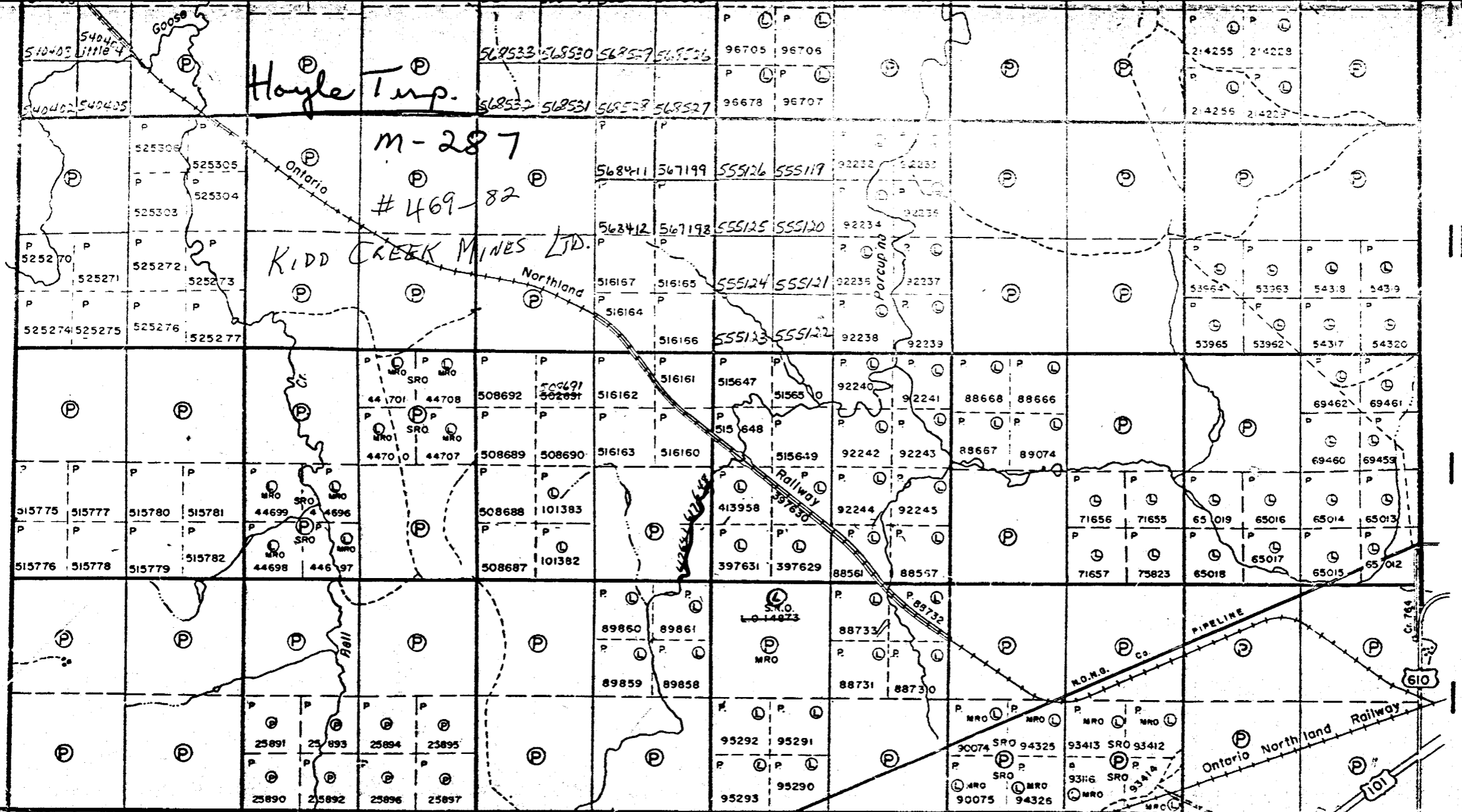
TOWNSHIP: Hoyle

REPORT No.: 30

WORK PERFORMED BY: Kidd Creek Mines Ltd.

<u>CLAIM No.</u>	<u>HOLE No.</u>	<u>FOOTAGE</u>	<u>DATE</u>	<u>NOTE</u>
P 617649	H-23-22	123.65m	Dec/82	(1)

NOTES: (1) #469-82



Hayle Twp.

M-287

#469-82

Kidd Creek Mines Ltd.

Northland

Porcupine Railway

PIPELINE

Ontario Northland Railway

IV  
III  
II  
I  
MATHESON TWP. (M.2)

12

11

10

9

8

7

6

5

4

3

2

1

WHITNEY TWP. (M.319)

48° 32' 11"  
89° 04' 28"

## DRILL HOLE RECORD

HOLE NO. H-23-22 ..... PROPERTY Porcupine River Claims ..... PROJECT NO. 86 ..... CONTRACTOR Bradley Brothers ..... START 8/12/82 .....  
 FINISH 10/12/82 .....

COORDINATES Grid Location: Latitude ..... UTM: Lat. .... Surveyed: Lat. .... Mine Grid: Lat. 100, 125 N  
 Departure ..... Dep. .... Dep. .... Dep. 98,693.7 E  
 Elevation ..... Elev. ....

COLLAR ATTITUDE Azimuth 011° Dip -75° LENGTH 123.65 m CORE SIZE BQ .....

### INCLINATION TESTS

#### Acid Tests

#### Compass Tests

Depth	Dip

Depth	Dip

Depth	Dip	Azimuth	True Azimuth
61.56	-76°	013°	003°
92.05	-75.5°	013°	003°
122.53	-74°	010°	000°

REMARKS: 48.76 m BQ Casing left in Hole.

*J. Der Weduwen*

FROM — TO		DESCRIPTION	SAMPLE No.	FROM — TO		SAMPLE LENGTH	ASSAYS					AVERAGES & REMARKS
0	25.00	OVERBURDEN										
25.00	40.84	Soft, badly broken bedrock, no core recovery										
40.84	45.72	.76 m brown oxidized core, in part a mud.										
45.72	92.66	PILLOWED MAFICS										
		Light green to light buff-green and fine grained. Unit is pillowed with widely spaced 10-30 mm chloritic selvages. Schistosity is weak and subtle at 25-30° to the core axis. The core is weakly carbonated as it reacts weakly to HCl and also is weakly sericitic. The unit is fractured throughout that have been dilated and filled primarily with chlorite and some lesser carbonate.										
		@ 50.52; a 10-15 mm irregular carbonate vein at approximately 20° to the core axis. Parallels schistosity and carries 1% fine pyrite. Pale pink in colour.										
		@ 61.43; a 35 mm quartz carbonate vein at 45° to the core axis. Sub-parallel to schistosity with chloritic contacts.										
		63.34 - 63.55 Badly broken core										
		63.55 - 65.53 Lost core										
		65.53 - 66.32 Broken core										
		66.32 - 67.36 Lost core										

LOGGED BY: J. Der Weduwen DATE: December, 1982

PROPERTY Porcupine River Claims

HOLE No. H-23-22 PAGE No. 1

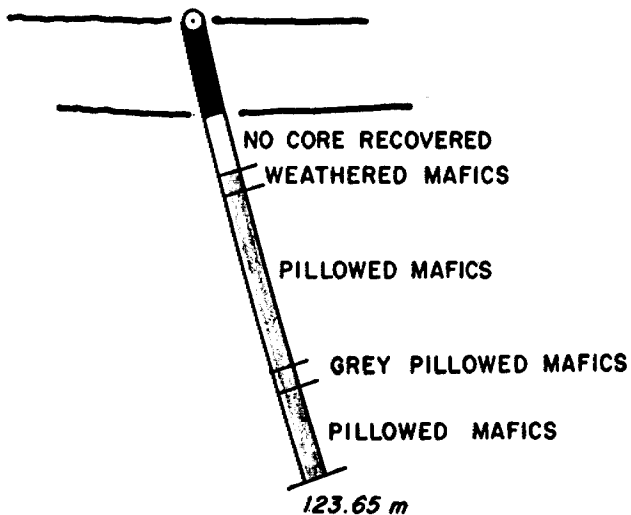
FROM — TO		DESCRIPTION	SAMPLE No.	FROM — TO		SAMPLE LENGTH	ASSAYS					AVERAGES & REMARKS
45.72	92.66	Continued.....										
		69.50 - 69.62 Brecciated carbonate zone with irregular contacts. Carries 20% buff coloured mafic fragments.										
		69.80 - 74.80 Core becomes moderately fractured. Most fractures are slightly dilated and are filled with chlorite. Very minor pyrite associated with the fracturing.										
		75.68 - 76.50 Several fractures with weakly hematitic surfaces. Pale red in colour.										
		78.30 - 78.95 A 10-30 mm carbonate zone at 0-10° to the core axis. Zone runs along edge of pillow selvage.										
		79.95 - 92.66 Core noticeably more intensely fractured. Often occurs as parallel sets of thin fractures with minor offsets. Locally core becomes in-situ brecciated.										
		80.38 - 80.72 Intensely fractured, in part brecciated core.										
		87.93 - 88.40 Partially in-situ brecciated core with 20% intermixed patchy carbonate.										
		90.21 - 91.67 Core becomes soft, a buff colour and is finely in-situ brecciated. Appears adjacent to a fault zone.										

FROM — TO		DESCRIPTION	SAMPLE No.	FROM — TO	SAMPLE LENGTH	ASSAYS					AVERAGES & REMARKS
45.72	92.66	Continued.....									
		91.67 - 92.54 Broken grey-green core									
		92.54 - 92.66 Lost core									
92.66	98.16	GREY PILLOWED MAFICS									
		Grey-buff to grey-green, often mottled with various shades of grey-green. Unit is weakly pillowed with selvages only faintly visible. Schistosity is weak at 20° to the core axis. Core is weakly carbonated and weakly carbonaceous. Unit carries minor pyrite in fractures or small carbonate patches. Fine fracturing is common throughout at various angles.									
98.16	123.65	PILLOWED MAFICS									
		Light green, fine grained and well pillowed, with thin 10-30mm chloritic selvages. Occasional cooling marks are well developed about the pillow selvages. Schistosity is weak at 20-25° to the core axis. Unit is moderately fractured, that have been dilated and filled with chlorite.									
		@ 101.67, A 50 mm quartz vein at 40° to the core axis. Sub-parallel to schistosity and is barren.									
		102.87 - 112.82 Core a medium to dark green. Carries several flat quartz-carbonate zones. Weakly chloritic.									

FROM — TO		DESCRIPTION	SAMPLE No.	FROM — TO	SAMPLE LENGTH	ASSAYS					AVERAGES & REMARKS
98.16	123.65	Continued....									
		@ 104.13, A 90 mm quartz carbonate vein at 40-50° to the core axis. Sub-parallel to schistosity with 10% wispy chloritic inclusions.									
		106.46 - 106.86 Quartz-carbonate vein with an upper contact at 55-65° to the core axis which crosses the schistosity. Has 15-20% intermixed grey carbonate and 1-2% soft, soapy yellowish sericite.									
		107.58 - 107.80 Irregular quartz-carbonate zone with minor sericitic inclusions.									
		107.96 - 108.24 Irregular carbonate zone with 20% mafic inclusions. Barren.									
		109.22 - 110.50. A 30-50 mm quartz carbonate vein running parallel to core axis. Carries 10% wispy mafic inclusions and very minor pyrite.									
		111.24 - 111.98 Quartz carbonate zone running parallel to the core axis. Carries minor mafic inclusions.									
		112.82 - 123.65 Core returns to a light green colour as at 98.16 m.									
		E.O.H. 123.65 m									

100,000 N

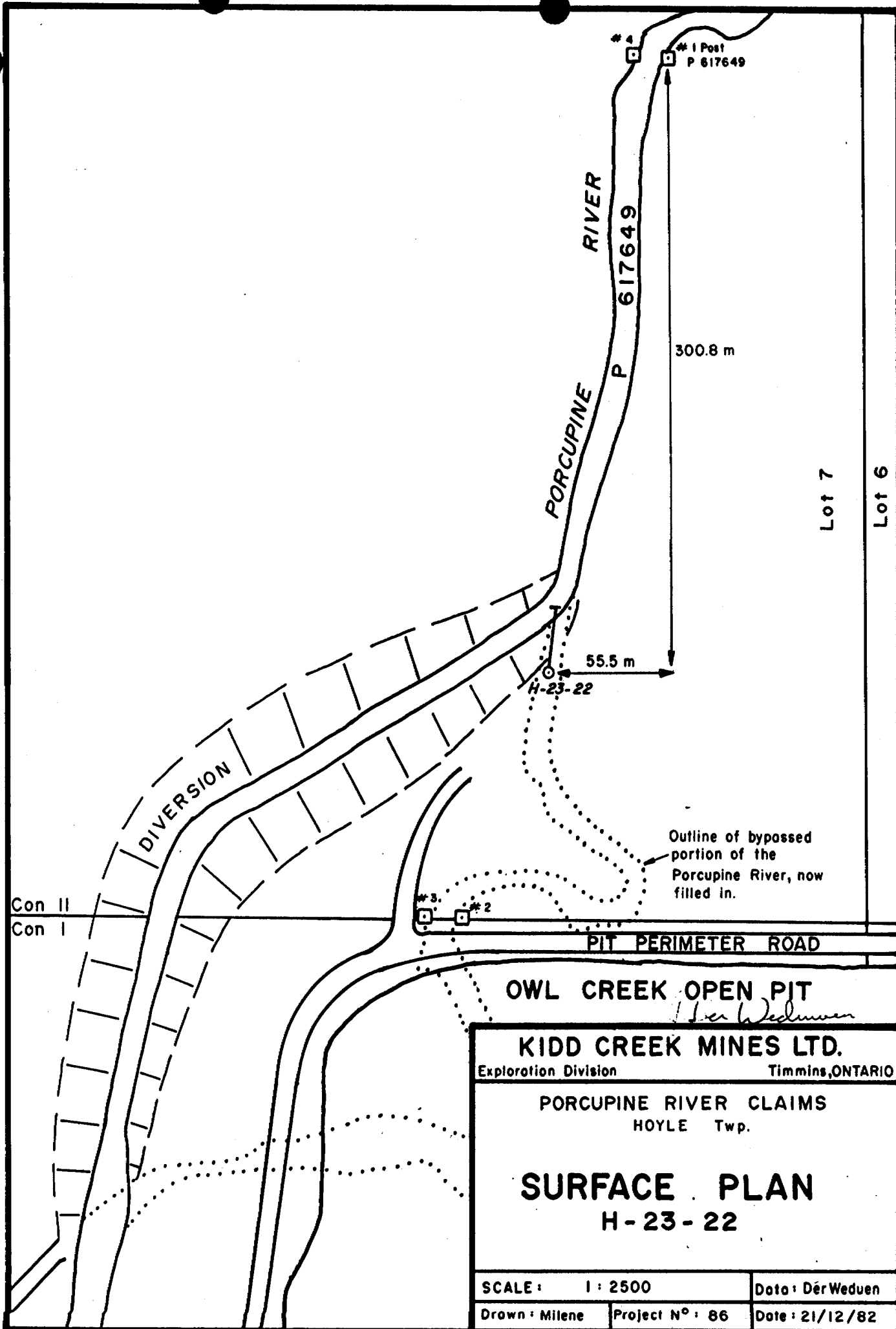
H-23-22



*J. DerWeduwen*

<b>KIDD CREEK MINES LTD.</b>		
Exploration Division	Timmins, ONTARIO	
PORCUPINE RIVER CLAIMS		
HOYLE Twp.		
<b>SECTION 98,693.7 E</b>		
( KIDD CREEK MINE GRID )		
( LOOKING WEST )		
SCALE: 1: 2000	Data: DerWeduwen	
Drawn: Milene	Project N°: 86	Date: 20/12/82



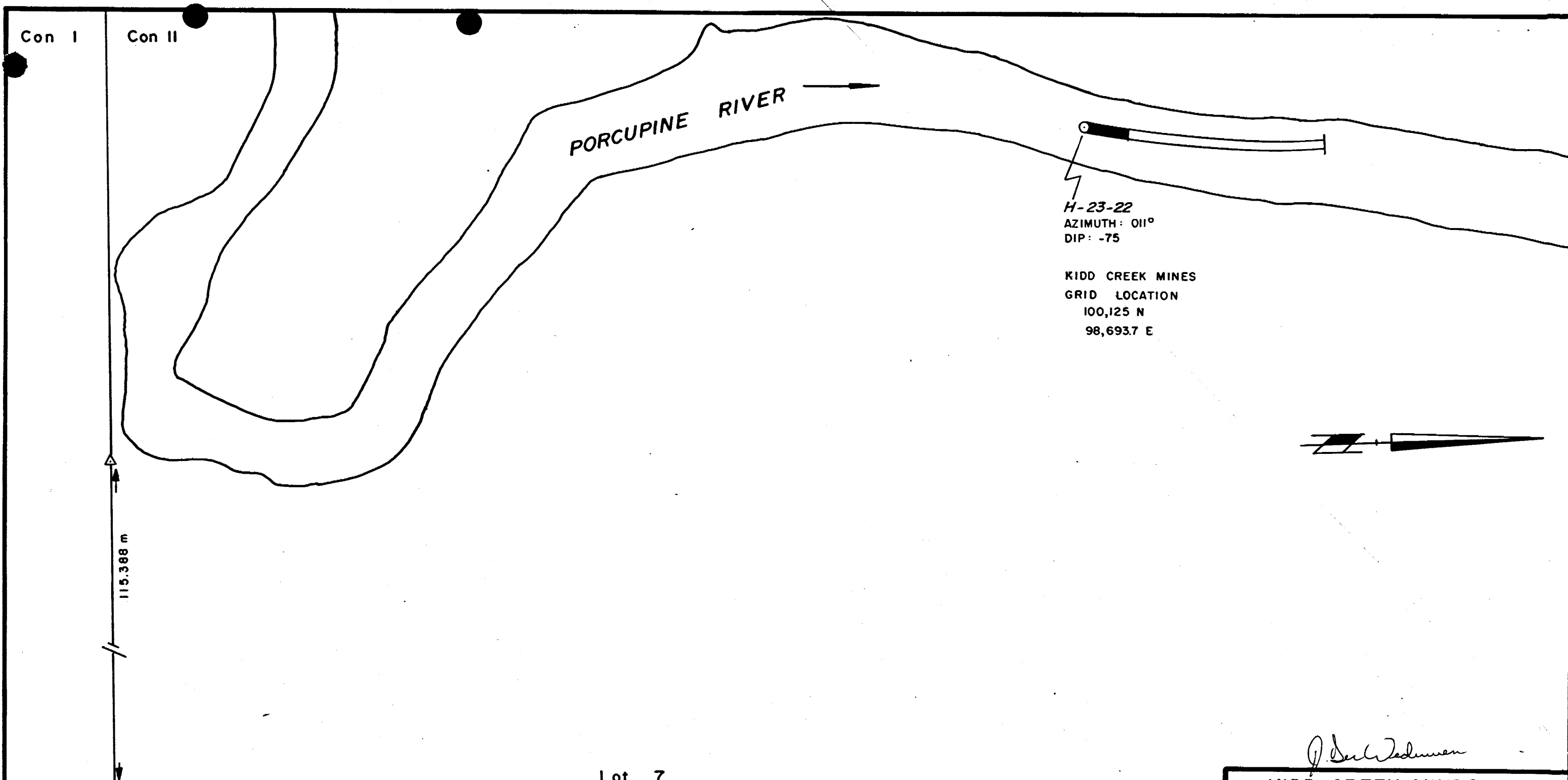


**KIDD CREEK MINES LTD.**  
 Exploration Division Timmins, ONTARIO

**PORCUPINE RIVER CLAIMS**  
 HOYLE Twp.

**SURFACE PLAN**  
**H-23-22**

SCALE: 1 : 2500	Date: DerWeduen
Drawn: Milene	Project N°: 86
	Date: 21/12/82



Con I

Con II

PORCUPINE RIVER

H-23-22  
AZIMUTH: 011°  
DIP: -75

KIDD CREEK MINES  
GRID LOCATION  
100,125 N  
98,693.7 E



115.388 m

Lot 7

Lot 6

SE CORNER  
Lot 7, Con II  
SIB (CR-1016)  
KIDD CREEK MINES GRID LOCATION  
100,000 N  
98,852 E

RIVER PLOT TAKEN FROM  
PLAN GR-4046  
BY  
P.A. BLACKBURN O.L.S  
for mining claim P 617649  
on file in Cochrane under  
LAND TITLES ACT

*J. DerWeduwen*

<b>KIDD CREEK MINES LTD.</b>	
Exploration Division	Timmins, Ontario
PORCUPINE RIVER CLAIMS HOYLE Twp.	
<b>SURFACE PLOT</b> H-23-22	
SCALE: 1:500	Data: DerWeduwen
Drawn: Milene	Date: 21/12/82
Project N°: 86	