



42A11SE0090 W9560-00544 WHITNEY

010

**ROYAL OAK MINES INC.  
HOYLE MINE  
WHITNEY TOWNSHIP  
1995 ASSESSMENT REPORT  
DIAMOND DRILLING**

**Peter Harvey  
Project Geologist  
Eastern Canada Exploration**

**December 1995**



42A11SE0090 W9560-00544 WHITNEY

010C

## TABLE OF CONTENTS

	<b>Page</b>
1.0) Introduction and Summary	1
2.0) Property Location and Access	1
3.0) Past Work	1
Figure 1    Location Map	2
Figure 2    Property Map	3
4.0) Geology and Gold Mineralization	4
5.0) 1995 Drill Program	4
Figure 3    Drilling Plan Map	5
6.0) Conclusions and Recommendations	6
List of References	
Statement of Qualifications	

## APPENDIX

Legend

Diamond Drill Hole Logs

Diamond Drill Hole Sections

## **1.0) Introduction and Summary**

The Hoyle Mine Property is located in Whitney Township, about 20 km east of the City of Timmins, Ontario. Royal Oak Mines Inc. controls the property with a 51% interest, and operates the Hoyle Mine under an agreement with Kinross Gold Corp., who hold the remaining 49%. Royal Oak Mines is currently mining an orebody, known as the AK Zone, on the property and five diamond drill holes were used to test the eastern limits of this zone in October, 1995.

The five holes all cored mafic volcanics with varying amounts of carbonate (ankerite), silica and sericite alteration, along with quartz veining and sulphides (pyrite, pyrrhotite), which is typical of the rock known to host gold mineralization at the AK Zone.

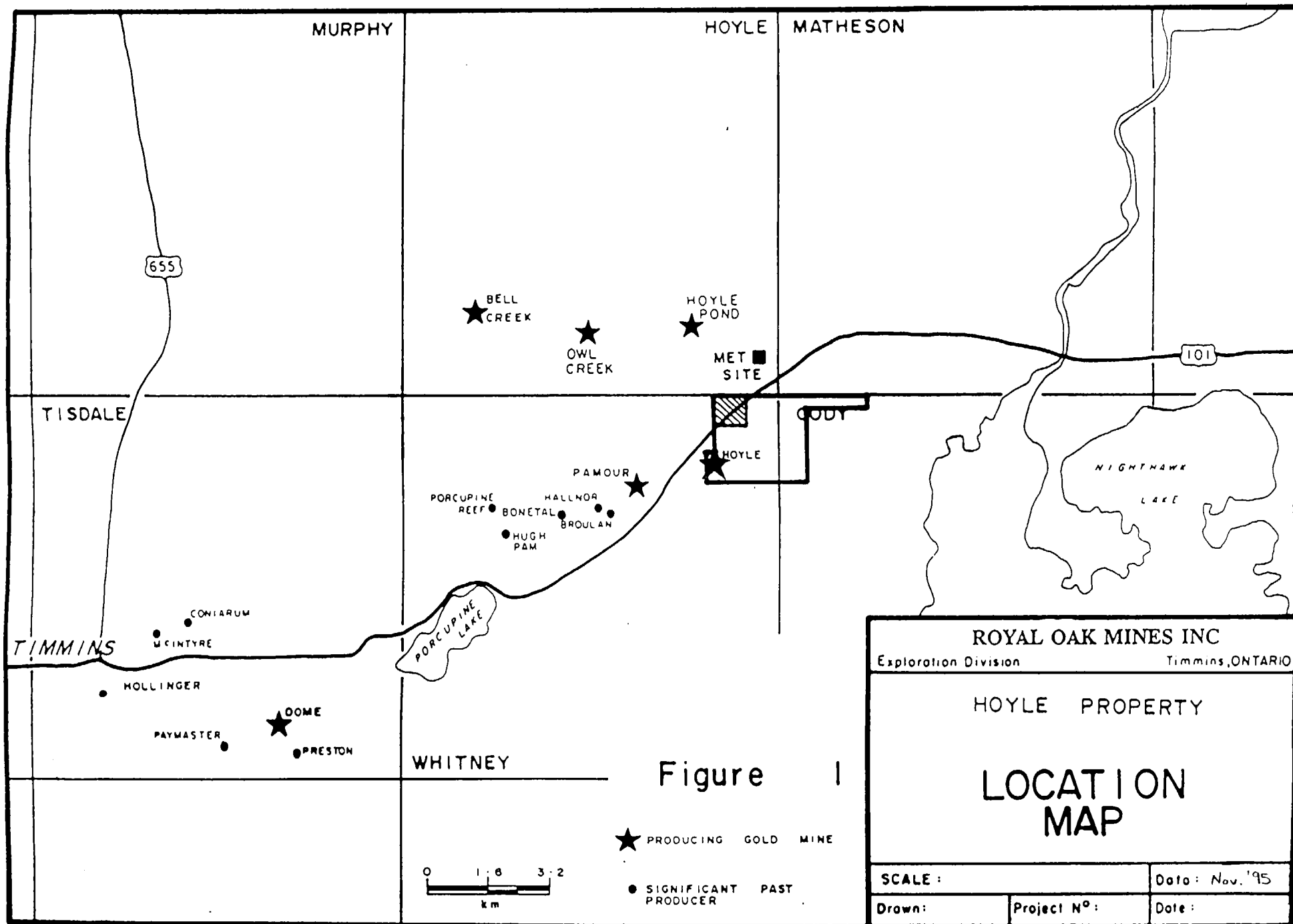
The drill program was successful in that each hole returned economically significant assays, and this work, coupled with ongoing underground drilling and other test work, should continue to increase the amount of gold mineralization known to exist at the AK Zone.

## **2.0) Property Location and Access**

The Hoyle Mine is located in Whitney Township, about 20 km east of the City of Timmins, Ontario. It is adjacent to the Pamour Mine and is accessed from Highway 101. Figure 1 is a Location Map for the Hoyle Mine, and Figure 2 is a Property Map showing the mining claims on the property.

## **3.0) Past Work**

Past work on the Hoyle Mine is extensive, dating back to at least 1934 when Hollinger Consolidated Gold Mines Ltd., then Ventures Ltd., did drilling and sunk a 250 foot shaft on the property. Work was more or less continuous thereafter, including building a mill and sinking an 1,800 foot shaft in 1940 to support underground mining, which ceased in 1948. Between 1978 and 1982, Pamour mined an open pit on the property (shown as #2 Pit on Figures 2 and 3). Falconbridge, Pamorex and Royal Oak have all completed extensive exploration programs (mainly diamond drilling) on the property starting in 1984, with work by Royal Oak continuing to the present day.



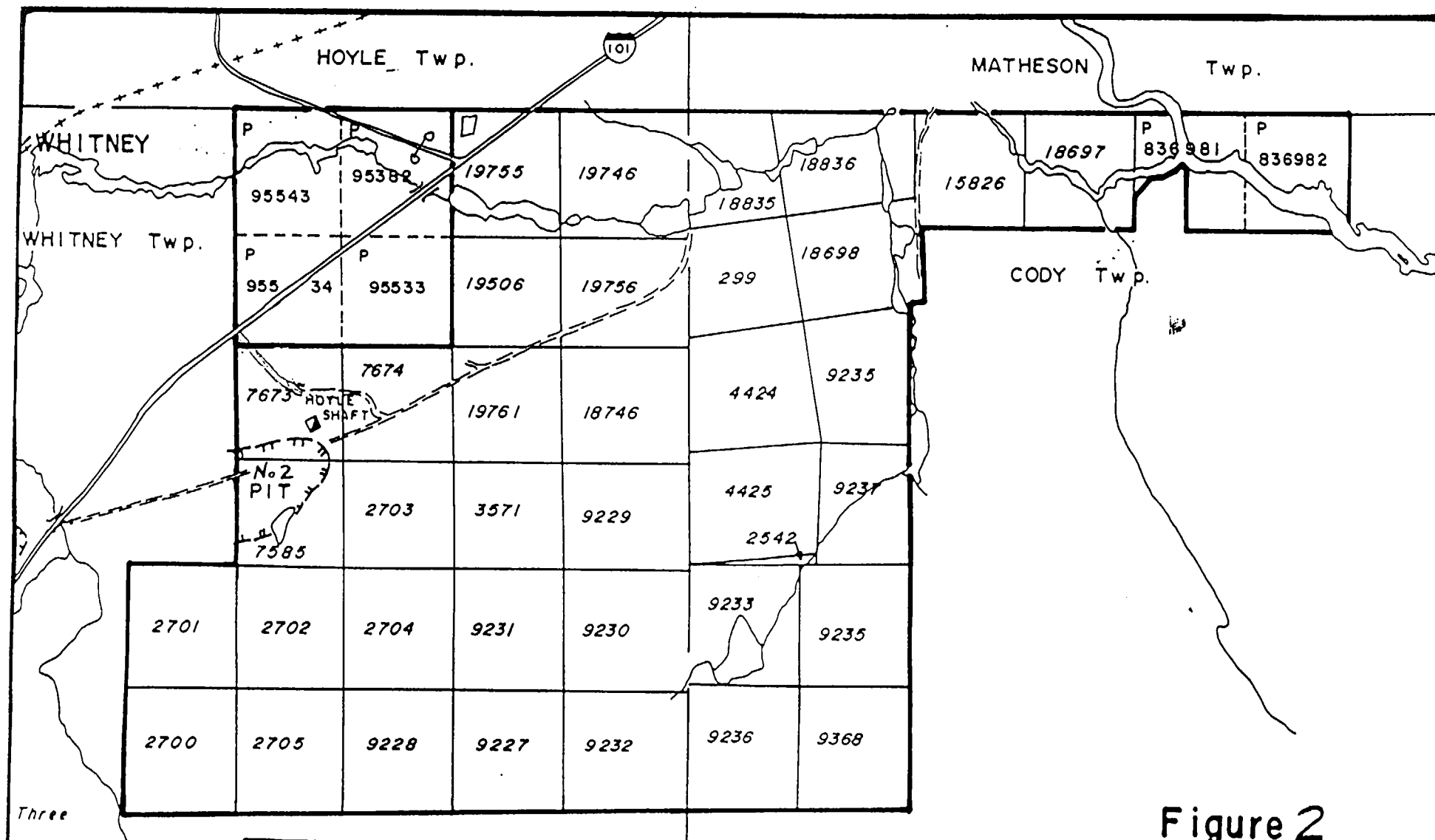


Figure 2

ROYAL OAK MINES INC

Exploration Division Timmins, ONTARIO

SCALE 1 : 20,000 Date:

Drawn: Project No: Date: Nov '95

HOYLE PROPERTY

CODY - WHITNEY Twps.

PROPERTY

#### **4.0) Geology and Gold Mineralization**

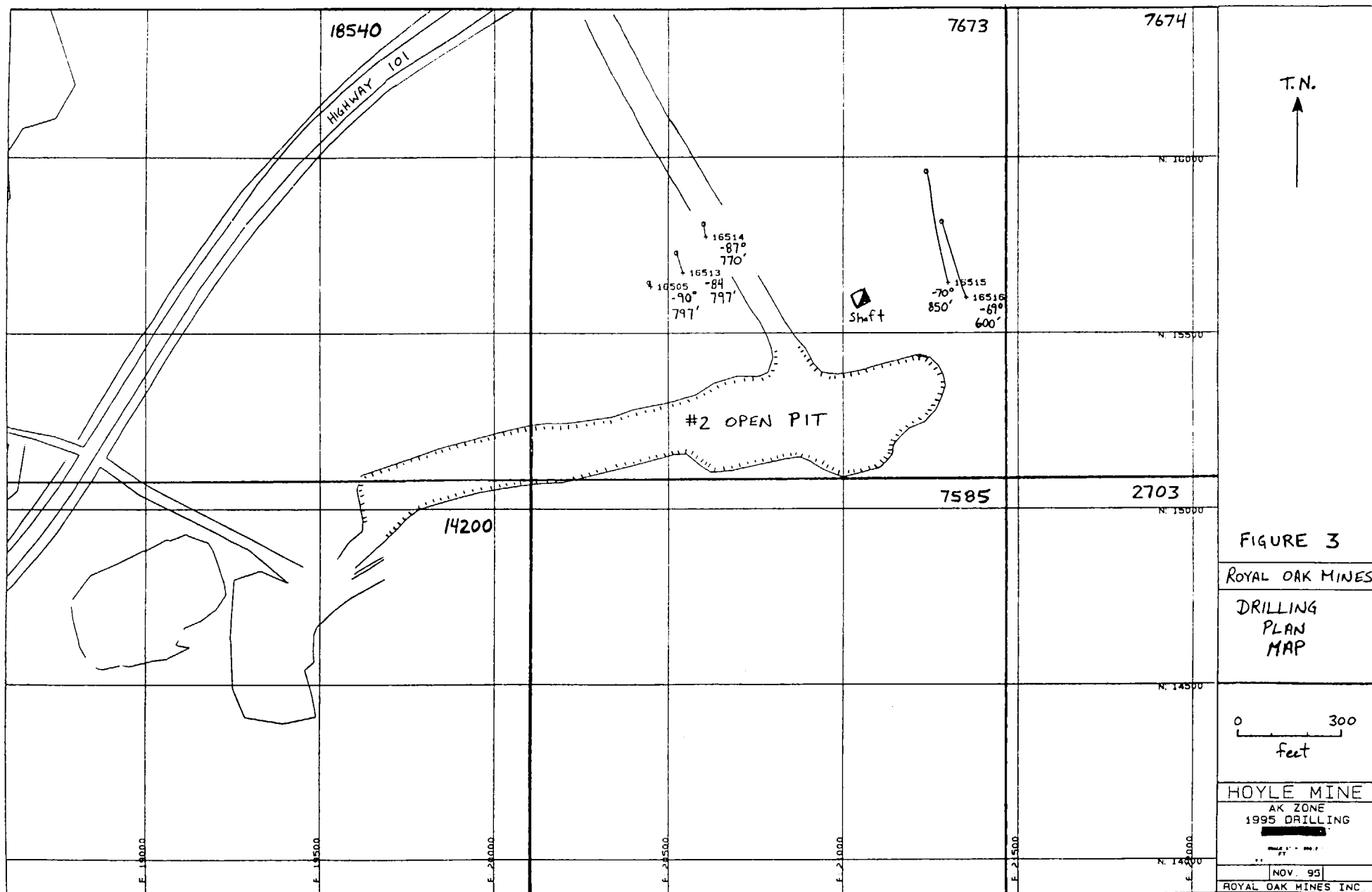
The property covers the eastern extension of the Pamour Mine stratigraphy. From north to south this includes Keewatin sediments (Porcupine group) and Tisdale volcanics (tholeiitic basalts and komatiites) overlain unconformably by Timiskaming sediments, which consist of argillite, slate, thin conglomerate units and quartzites or quartz-rich wackes and thin ultramafic agglomerates.

All of the historical mining at Hoyle was done in the conglomerate and adjacent greywacke units (i.e. #2 Pit), but the AK Zone, which is located immediately north of the unconformity, is hosted in volcanics and is therefore considered a new area to be explored for gold mineralization.

#### **5.0) 1995 Drill Program**

A significant amount of diamond drilling on the Hoyle property was completed by Royal Oak throughout 1995, and a small part of the total amount drilled was completed in October, when five holes were drilled east of the AK Zone.

Holes 16505, 16513 and 16514 were drilled west of the Hoyle shaft and holes 16515 and 16516 were drilled east of it, as shown in Figure 3, the Drilling Plan Map. All holes were drilled north of #2 Pit, and were drilled in a southerly direction. All of the holes were designed to test for mineralization in the volcanics, and all holes returned significant gold assays from these units. Holes 16515 and 16516 were drilled past the unconformity and into the sediments, and returned significant assays from the conglomerate/greywacke units south of the unconformity.



## 6.0) **Conclusions and Recommendations**

This drill program was successful in that each of the five holes drilled returned economically significant assays from volcanic units at the Hoyle Mine. This work will increase the limits of the AK Zone, and will aid in the on-going exploration and mining of it.

It is recommended that more diamond drilling be done in the same area to outline additional gold mineralization.



## REFERENCES

Harvey, P., 1995

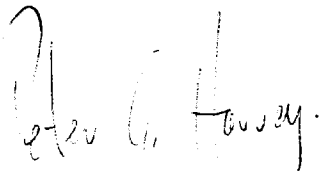
Royal Oak Mines Inc., Timmins Division, Hoyle Property,  
1995 Technical Report  
(Internal Company Report)

## STATEMENT OF QUALIFICATIONS

I, Peter G. Harvey, of the City of Timmins, Province of Ontario, do hereby certify that:

- 1 I received a B.Sc. degree (Honours) in Geology from Lakehead University, Thunder Bay, Ontario, in 1985.
- 2 I have been employed as a geologist by various mining companies in Ontario since 1985.
- 3 I am the author of this report.
- 4 I have no direct interest, nor do I have any shares of any company exploring the properties described in this report, nor on any adjacent or surrounding properties.

Dated this 1st day of December, 1995, Timmins, Ontario.



Peter G. Harvey  
Project Geologist  
Eastern Canada Exploration  
Royal Oak Mines Inc.

# APPENDIX

PAMOUR NO. 1/HOYLE PROPERTY LEGEND

<u>NAME</u>	<u>DESCRIPTION</u>
fgalt	Fine grained sericitized basalt
fgcb	Fine grained carbonitized basalt
fgchl	Fine grained chloritized basalt
fg	Fine grained basalt
fgbx	Fine grained brecciated basalt (insitu and all others)
fgcc	Fine grained calcitic basalt
carb	Carbonitized komatiite - coarse grained with porphyroblastic ankerite
talc	Talcose komatiite
tlccb	Talcose-carbonitized komatiite
tlcch	Talcose-chloritic komatiite
AGL	Agglomerate
CGL	Conglomerate
MCGL	Greywacke bands in conglomerate
GWK	Greywacke 0-10% T
CMT	Greywacke 10-40% T
CT	Greywacke 40-90% T
T	Slate 0-10% GWK
QV	Quartz vein
Fz	Fault zone
LC	Lost core
SHRZ	Shear zone

ALTERATION

ANK	Ankeritic	BL1	Very weakly bleached
CC	Calcitic	BL2	Weakly bleached
CHL	Chloritic	BL3	Weakly-moderately bleached
FU	Fuchsitic	BL4	Moderately bleached
SER	Sericitic	BL5	Moderately bleached-bleached
TLC	Talc	BL6	Bleached
TLCB	Talc-carb.	BL7	Bleached-well bleached
TLCH	Talc-chlorite	BL8	Well bleached
LIM	Limonitic		

STRUCTURE

B	S	Schistosity	C	Contact
	F	Foliation	V	Vein (primary if more than one occurs)
	B	Bedding		
J	J	Joint Plane		
	V	Vein (secondary if more than one occurs)		
	F	Fault plane/fracture		
A1/A2		Measurement of above with respect to core axis (C.A.)		

COM (Competency)

M	Massive - will not break without considerable effort
S	Breaks roughly on shear planes
SS	Breaks easily
SSS	Breaks in hands without effort
B	Broken/blocky
F	Fractured
G	Gouge

GRS (Grain Size)

VF	Very fine grained
F	Fine grained
FM	Fine-medium grained
M	Medium grained
MC	Medium-coarse grained
C	Coarse grained
VC	Very coarse grained

TEXT (Texture)

AMYG	Amygdular	MSV	Massive
APL	Amygdular, pillowed	MBX	Mildly brecciated
BX	Brecciated	PBX	Pillow breccia
CLAS	Clastic (sediments only)	PIL	Pillowed
CZ	Chill zone	SHD	Sheared
FRAG	Fragmental	SFX	Spinifex
HOM	Homogeneous	STWK	Stockwork
ISBX	Insitu-breccia	SUG	Sugary
LAM	Laminated (slate only)	VUG	Vuggy
SPT	Spotted	MOT	Mottled
PBLS	Porphyroblastic - distinct blasts, e.g. ankerite		
BED	Bedded, e.g. GWK/T mixture		

CO (Colour)

AG	Apple green	GN	Green
BGY	Brown grey	GY	Grey
BN	Brown	HY	Honey
BK	Black	OG	Olive green
BL	Blue	TN	Tan
GG	Grey green	WH	White

Royal Oak Mines Inc. - Pamour Mine - DIAMOND DRILL CORE LOG

Page 1 of 3

Project: AK ZONE

Section:

Logged By: L. Wong

Logged Date: 10/12/95

RILL HOLE: 16505

North: 15646.0

East: 20445.0

Elev: 10968.0

Len: 797.0

OBI:

OBE:

INC:

Lease:

DIST	AZIM	DIP	DIST	AZIM	DIP	DIST	AZIM	DIP	DIST	AZIM	DIP	DIST	AZIM	DIP	DIST	AZIM	DIP
797.0	162	89	0.0	0	0	0.0	0	0	0.0	0	0	0.0	0	0	0.0	0	0
0.0	0	0	0.0	0	0	0.0	0	0	0.0	0	0	0.0	0	0	0.0	0	0
0.0	0	0	0.0	0	0	0.0	0	0	0.0	0	0	0.0	0	0	0.0	0	0
0.0	0	0	0.0	0	0	0.0	0	0	0.0	0	0	0.0	0	0	0.0	0	0

DIST	ROCK DESCRIPTION						STRUCTURE		MINERALS		VG	SAMPLE#	WIDTH	ASSAY	#	COMMENTS
	COM	GRS	TEXT	CO	ALT	NAME	B/S	J/F	GANG	METALLIC						
3.1												3.10	0.000			
23.1	SS	FM	MSV	GN	CHL	TLCC	0	0			DD53222	20.00	0.005		TALC CHL ALTD UM W QTZ & CHL STRINGERS	
43.1	SS	FM	MSV	GN	CHL	TLCC	0	0			DD53223	20.00	0.002		CHL STRINGERS, SOME CARB ALT	
63.1	SS	FM	MSV	GN	CHL	TLCC	0	0		1	DD53224	20.00	0.003		DISS PY IN FRACTURES	
74.1	SS	FM	MSV	GN	CHL	TLCC	0	0			DD53225	11.00	0.004			
94.1	SS	FM	MSV	GN	CHL	FGCHL	0	0			DD53226	20.00	0.032		F TO MED GRAINED CHLORITE ALTD BASALT	
110.5	SS	FM	MSV	GN	CHL	FGCHL	0	0			DD53227	16.40	0.000			
117.0	SS	FM	MSV	GN	CHL	TLCC	0	0			DD53228	6.50	0.007			
127.0	SS	FM	MSV	GN	CHL	FG	0	0		1	DD53229	10.00	0.007		FINE TO MED GRAINED BASALT	
147.0	SS	FM	MSV	GN	CHL	TLCC	0	0			DD53230	20.00	0.007			
157.0	SS	FM	MSV	GN	CHL	TLCC	0	0		1		10.00	0.000			
178.3	SS	FM	MSV	GN	CHL	TLCC	0	0		1		0	0.30	0.000		CARB ALT TO UM
235.2	SS	*	*	*	*	FZ	0	0				0	56.90	0.000		FAULT ZONE
236.4	SS	*	*	*	*	FZ	0	0				0	1.20	0.000		FAULT ZONE
252.4	SS	F	ISBX	GN	CHL	FGCHL	0	0				0	16.00	0.000		
515.0	SS	F	STWK	BK	CHL	TLCC	0	0		2		0	262.60	0.000		SBHDL PY, .7' QZ FLOOD, GRD CORE @ 405.9,415
519.0	SS	FM	STWK	BN	ANK	CARB	0	0			DD53231	4.00	0.003			
523.0	SS	FM	STWK	BN	ANK	CARB	0	0			DD53232	4.00	0.004			
527.0	SS	FM	STWK	BN	ANK	CARB	0	0			DD53233	4.00	0.004			
531.0	SS	FM	STWK	BN	ANK	CARB	0	0			DD53234	4.00	0.011			
535.0	SS	FM	STWK	BN	ANK	CARB	0	0			DD53235	4.00	0.010			
539.0	SS	FM	STWK	BN	ANK	CARB	0	0			DD53236	4.00	0.014			
543.0	SS	FM	STWK	BN	ANK	CARB	0	0			DD53237	4.00	0.005			
547.0	SS	FM	STWK	BN	ANK	CARB	0	0			DD53238	4.00	0.004			
551.0	SS	F	HOM	BN	ANK	CARB	0	0			DD53239	4.00	0.004		FINE TO MED GRAINED STOCKWORK TEXTURE	
555.0	SS	F	HOM	BN	ANK	CARB	0	0			DD53240	4.00	0.004			
559.0	SS	F	HOM	BN	ANK	CARB	0	0			DD53241	4.00	0.003			
563.0	SS	F	HOM	BN	ANK	CARB	0	0			DD53242	4.00	0.006			
567.0	SS	F	HOM	BN	ANK	CARB	0	0			DD53243	4.00	0.005		FU ALT, 2-1" @ 40, 2 - 1/2" @ 20 AND 55	
571.0	SS	F	HOM	BN	ANK	CARB	0	0			DD53244	4.00	0.006			
575.0	SS	FM	STWK	BN	ANK	CARB	0	0			DD53245	4.00	0.008			
579.0	SS	FM	STWK	BN	ANK	CARB	0	0			DD53246	4.00	0.004			
583.0	SS	FM	STWK	BN	ANK	CARB	0	0			DD53247	4.00	0.005			
587.0	SS	FM	STWK	BN	ANK	CARB	0	0			DD53248	4.00	0.003			
591.0	SS	FM	STWK	BN	ANK	CARB	0	0		1	DD53249	4.00	0.007			
593.0	SS	FM	STWK	BK	CHL	TLCC	0	0			DD53250	2.00	0.011		STOCKWORK OF QZ AND CAL STRINGERS	
597.0	SS	FM	STWK	BN	ANK	CARB	0	0			DD40751	4.00	0.005			
601.0	SS	FM	STWK	BN	ANK	CARB	0	0			DD40752	4.00	0.048			

CLAIM No: P7673

Core Size: BQ

Date Drilled: Oct. 1995

Drill Contractor: Mackenzie Drilling Ltd.

Core Storage: N.A. - Core Whole Sampled.

Royal Oak Mines Inc. - Pamour Mine - DIAMOND DRILL CORE LOG

Page 2 of 3

Project: AK ZONE

Section:

Logged By: L. Wong

Logged Date: 10/12/95

DRILL HOLE: 16505

North: 15646.0

East: 20445.0

Elev: 0.0

Len: 797.0

OBI: OBE:

INC:

Lease:

DIST	AZIM	DIP	DIST	AZIM	DIP	DIST	AZIM	DIP	DIST	AZIM	DIP	DIST	AZIM	DIP	DIST	AZIM	DIP
797.0	162	89	0.0	0	0	0.0	0	0	0.0	0	0	0.0	0	0	0.0	0	0
0.0	0	0	0.0	0	0	0.0	0	0	0.0	0	0	0.0	0	0	0.0	0	0
0.0	0	0	0.0	0	0	0.0	0	0	0.0	0	0	0.0	0	0	0.0	0	0
0.0	0	0	0.0	0	0	0.0	0	0	0.0	0	0	0.0	0	0	0.0	0	0

DIST	ROCK DESCRIPTION						STRUCTURE				MINERALS				VG	SAMPLE#	WIDTH	ASSAY	#	COMMENTS
	COM	GRS	TEXT	CO	ALT	NAME	B	A1	J	A2	QZ	PY	PO							
605.0	S	FM	STWK	BN	ANK	CARB	0	0	0	TR				DD40753	4.00	0.014				
610.0	S	FM	STWK	BN	ANK	CARB	0	0	0	10				DD40754	5.00	0.042				
615.0	S	FM	MSV	BN	ANK	CARB	0	0	0		1			DD40755	5.00	0.017		QZ FLOOD 0.7' WITH PK CAL & FU POSS SHEAR Z		
619.5	S	FM	STWK	BN	ANK	CARB	0	0	0		2			DD40756	4.50	0.048				
623.5	S	F	MSV	GY	ANK	FGALT	0	0	0		1			DD40757	4.00	0.202		GREY BROWN COUCOUR SOME PERVASIVE ANK ALT		
627.0	S	F	MSV	GY	ANK	FGALT	0	0	0		1			DD40758	3.50	0.024				
631.0	S	F	MSV	GY	ANK	FGALT	0	0	0	2				DD40759	4.00	0.064				
637.0	S	F	MSV	GY	ANK	FGALT	0	0	0		1			DD40760	6.00	0.002				
642.0	S	FM	STWK	BN	ANK	CARB	0	0	0	3				DD40761	5.00	0.004		2 1/2" QV @ 23 TO CAX		
644.3	S	FM	STWK	BN	ANK	CARB	0	0	0		3			DD40762	2.30	0.009		WITH TLCCH		
647.0	M	F	MSV	GN	FU	FGALT	0	0	0	2				DD40763	2.70	0.119		LIGHT GN BASALT W PY BLEBS, 2" QV @ 46		
651.0	M	FM	HOM	BN	ANK	CARB	0	0	0		2			DD40764	4.00	0.094		2 WH QV 1" @ 32 TO CAX		
655.0	S	FM	HOM	BN	ANK	CARB	0	0	0					DD40765	4.00	0.129				
659.0	S	FM	HOM	BN	ANK	CARB	0	0	0	2				DD40766	4.00	0.058		1", 1/2" WH QV		
663.0	S	FM	HOM	BN	ANK	CARB	0	0	0					DD40767	4.00	0.018				
667.0	S	FM	HOM	BN	ANK	CARB	0	0	0					DD40768	4.00	0.003				
671.0	S	FM	HOM	BN	ANK	CARB	0	0	0					DD40769	4.00	0.008				
675.0	S	FM	HOM	BN	ANK	CARB	0	0	0	2				DD40770	4.00	0.020				
679.0	S	FM	HOM	BN	ANK	CARB	0	0	0	1				DD40771	4.00	0.041				
683.0	S	FM	HOM	BN	ANK	CARB	0	0	0					DD40772	4.00	0.008				
687.0	S	FM	HOM	BN	ANK	CARB	0	0	0	TR				DD40773	4.00	0.006				
691.0	S	FM	HOM	BN	ANK	CARB	0	0	0	TR				DD40774	4.00	0.009				
695.0	S	FM	HOM	BN	ANK	CARB	0	0	0	1				DD40775	4.00	0.074		1" WH QV 45 TO CAX		
701.1	S	FM	HOM	BN	ANK	CARB	0	0	0	2				DD40776	6.10	0.010				
705.0	M	F	PIL	TN	ANK	FGALT	0	0	0					DD40777	3.90	0.065				
709.0	M	F	PIL	TN	ANK	FGALT	0	0	0	1				DD40778	4.00	0.088		PY STRINGERS & BLES W MINOR QZ STRINGERS		
713.0	M	F	PIL	TN	ANK	FGALT	0	0	0					DD40779	4.00	0.020				
717.0	M	F	PIL	TN	ANK	FGALT	0	0	0	1				DD40780	4.00	0.011				
721.0	M	F	PIL	TN	ANK	FGALT	0	0	0	1				DD40781	4.00	0.013				
725.0	M	F	PIL	GY	ANK	FGALT	0	0	0	1				DD40782	4.00	0.010				
729.0	M	F	PIL	TN	ANK	FGALT	0	0	0	2				DD40783	4.00	0.017				
733.0	M	F	PIL	TN	ANK	FGALT	0	0	0	1				DD40784	4.00	0.004				
737.0	M	F	PIL	TN	ANK	FGALT	0	0	0	TR				DD40785	4.00	0.011				
741.0	M	F	PIL	GY	ANK	FGALT	0	0	0	1				DD40786	4.00	0.049				
745.0	M	F	PIL	GY	ANK	FGALT	0	0	0	TR				DD40787	4.00	0.009				
749.0	M	F	PIL	GY	ANK	FGALT	0	0	0	1				DD40788	4.00	0.040				
753.0	M	F	PIL	TN	ANK	FGALT	0	0	0	TR				DD40789	4.00	0.003				
757.0	M	F	PIL	TN	ANK	FGALT	0	0	0	1				DD40790	4.00	0.004				
761.0	M	F	PIL	TN	ANK	FGALT	0	0	0	TR				DD40791	4.00	0.112				

Royal Oak Mines Inc. - Pamour Mine - DIAMOND DRILL CORE LOG

Page 3 of 3

Project: AK ZONE

Section:

Logged By: L. Wong

Logged Date: 10/12/95

DRILL HOLE: 16505

North: 15646.0

East: 20445.0

Elev: 0.0

Len: 797.0

OBI:

OBE:

INC:

Lease:

DIST	AZIM	DIP	DIST	AZIM	DIP	DIST	AZIM	DIP	DIST	AZIM	DIP	DIST	AZIM	DIP	DIST	AZIM	DIP
797.0	162	89	0.0	0	0	0.0	0	0	0.0	0	0	0.0	0	0	0.0	0	0
0.0	0	0	0.0	0	0	0.0	0	0	0.0	0	0	0.0	0	0	0.0	0	0
0.0	0	0	0.0	0	0	0.0	0	0	0.0	0	0	0.0	0	0	0.0	0	0
0.0	0	0	0.0	0	0	0.0	0	0	0.0	0	0	0.0	0	0	0.0	0	0

DIST	ROCK DESCRIPTION						STRUCTURE				MINERALS				VG	SAMPLE#	WIDTH	ASSAY	#	COMMENTS
	COM	GRS	TEXT	CO	ALT	NAME	B/S		J/F		GANG		METALLIC							
							B	A1	J	A2	QZ		PY	PO						
765.0	M	F	PIL	TN	ANK	FGALT	0		0	1		1			DD40792	4.00	0.062			
770.0	S	FM	HOM	BN	ANK	CARB	0		0	2		2			DD40793	5.00	0.051			
774.4	S	FM	HOM	BN	ANK	CARB	0		0	TR		1			DD40794	4.40	0.042			
778.4	S	FM	HOM	GY	BL1	FGALT	0		0						DD40795	4.00	0.027			
783.1	S	FM	HOM	GY	BL1	FGALT	0		0						DD40796	4.70	0.004			
787.0	S	FM	HOM	GY	BL1	FGALT	0		0	2		1			DD40797	3.90	0.039			
792.0	S	FM	PIL	GY	BL1	FGALT	0		0	1		1			DD40798	5.00	0.061			
797.0	S	FM	PIL	GY	BL1	FGALT	0		0	1		1			DD40799	5.00	0.033			

Date Printed: 11/01/95



Royal Oak Mines Inc. - Pamour Mine - DIAMOND DRILL CORE LOG

Page 1 of 4

Project: AK ZONE - SURFACE

Section: 212E

Logged By: L. Wong

Logged Date: 10/14/95

DRILL HOLE: 16513

North: 15731.0

East: 20523.0

Elev: 10968.0

Len: 797.0

OBI:

OBE:

INC:

Lease:

DIST	AZIM	DIP	DIST	AZIM	DIP	DIST	AZIM	DIP	DIST	AZIM	DIP	DIST	AZIM	DIP	DIST	AZIM	DIP
0.0	162	-84	0.0	0	0	0.0	0	0	0.0	0	0	0.0	0	0	0.0	0	0
800.0	162	-87	0.0	0	0	0.0	0	0	0.0	0	0	0.0	0	0	0.0	0	0
0.0	0	0	0.0	0	0	0.0	0	0	0.0	0	0	0.0	0	0	0.0	0	0
0.0	0	0	0.0	0	0	0.0	0	0	0.0	0	0	0.0	0	0	0.0	0	0

ROCK DESCRIPTION							STRUCTURE				MINERALS				VG	SAMPLE#	WIDTH	ASSAY	#	COMMENTS
DIST	COM	GRS	TEXT	CO	ALT	NAME	B	A1	J	A2	QZ	GANG	METALLIC	PY						
16.7	*	*	*	*	*	CAS			0	0							16.70	0.000		
47.0	FM	STWK	BK	CHL	TLCCH				0	0				TR	TR		30.30	0.002		CHL & CARB STRINGERS, TR PY BLEBS, TR PO
62.0	FM	STWK	GY	CC	TLCCH				0	0							15.60	0.004		CARB STRINGERS, PERVASIVE CARBONATE ALT.
67.6	FM	MSV	GG	CC	FGCB				0	0							5.00	0.007		
72.6	FM	MSV	GG	CC	FGCB				0	0							5.00	0.006		
77.0	FM	MSV	GG	CC	FGCB				0	0							4.40	0.005		
88.5	F	MSV	GN	CHL	FGCHL				0	0							11.50	0.001		
93.5	F	MSV	GG	CC	FGCB				0	0							5.00	0.006		
97.5	F	MSV	GG	CC	FGCB				0	0							4.00	0.003		
101.5	F	MSV	GG	CC	FGCB				0	0	1			TR			4.00	0.013		
105.5	F	MSV	GG	CC	FGCB				0	0							4.00	0.002		
109.3	F	MSV	GG	CC	FGCB				0	0	1			TR			3.80	0.005		
114.3	F	MSV	GY	BL2	FGALT				0	0				1			5.00	0.004		MED TO LIGHT GREY, PY BLEBS
119.3	F	MSV	GY	BL2	FGALT				0	0							5.00	0.002		
123.1	F	MSV	GY	BL2	FGALT				0	0							.80	0.010		
127.0	F	MSV	GN	BL2	FGCHL				0	0							3.90	0.001		CHL ALT, CALCITE BLEBS
132.0	F	MSV	GN	CC	FGCB				0	0							5.00	0.002		
138.4	F	MSV	GN	CC	FGCB				0	0							6.40	0.005		
142.4	F	MSV	GN	CC	FGCB				0	0							4.00	0.001		
145.4	F	MSV	GN	CC	FGCB				0	0							3.00	0.004		
150.4	F	MSV	GY	BL1	FGALT				0	0							5.00	0.007		LIHT TO MED GREY, CARB STRINGERS
154.4	F	MSV	GY	BL1	FGALT				0	0							4.00	0.006		
158.4	F	MSV	GY	BL1	FGALT				0	0							4.00	0.008		
162.8	F	MSV	GY	BL1	FGALT				0	0							4.40	0.005		
163.2	F	MSV	BK	CHL	TLCCH				0	0							0.40	0.000		DK GN TO BLK, CHLORITE ALTERATION
168.9	F	MSV	GY	BL3	FGALT				0	0							5.70	0.006		LIGHT GREY, FINE GRAINED, MASSIVE, SZ @ 168.
174.2	F	PIL	GN	BL1	FG				0	0							5.30	0.001		FRACTURED
179.2	F	PIL	GN	BL1	FG				0	0							5.00	0.006		
184.2	F	PIL	GN	BL1	FG				0	0							5.00	0.004		
189.2	F	PIL	GN	BL1	FG				0	0							5.00	0.005		
194.2	F	PIL	GN	BL1	FG				0	0							5.00	0.001		
199.2	F	PIL	GN	BL1	FG				0	0							5.00	0.003		
204.2	F	PIL	GN	BL1	FG				0	0	1						5.00	0.003		1/2" WH QV @ 65 TO CAX
209.2	F	PIL	GN	BL1	FG				0	0				1			5.00	0.003		
214.2	F	PIL	GN	BL1	FG				0	0							5.00	0.006		
218.6	F	PIL	GN	BL1	FG				0	0				2			4.40	0.007		
223.6	F	PIL	GN	BL1	FG				0	0	2						5.00	0.004		1/2" WH QV @ 35 TO CAX, 1 1/2" GREY QZ FLOOD
228.7	F	PIL	GN	BL1	FG				0	0							5.10	0.001		

CLAIM No: P7673

Core Size: 8Q

Date Drilled: Oct. 1995

Drill Contractor: McKenzie Drilling Ltd.

Core Storage: N.A. - Core Whole Sampled.

Royal Oak Mines Inc. - Pamour Mine - DIAMOND DRILL CORE LOG

Page 2 of 4

Project: AK ZONE - SURFACE

Section: 212E

Logged By: L. Wong

Logged Date: 10/14/95

DRILL HOLE: 16513

North: 15731.0

East: 20523.0

Elev: 10968.0

Len: 797.0

OBI:

OBE:

INC:

Lease:

DIST	AZIM	DIP	DIST	AZIM	DIP	DIST	AZIM	DIP	DIST	AZIM	DIP	DIST	AZIM	DIP	DIST	AZIM	DIP
0.0	162	-84	0.0	0	0	0.0	0	0	0.0	0	0	0.0	0	0	0.0	0	0
800.0	162	-87	0.0	0	0	0.0	0	0	0.0	0	0	0.0	0	0	0.0	0	0
0.0	0	0	0.0	0	0	0.0	0	0	0.0	0	0	0.0	0	0	0.0	0	0
0.0	0	0	0.0	0	0	0.0	0	0	0.0	0	0	0.0	0	0	0.0	0	0

DIST	ROCK DESCRIPTION					STRUCTURE				MINERALS				VG	SAMPLE#	WIDTH	ASSAY	#	COMMENTS	
	COM	GRS	TEXT	CO	ALT	NAME	B	A1	J	A2	QZ	PY	PO							
233.7	S	F	PIL	GN	BL1	FG								1	DD40864	5.00	0.005		QZ FLOOD .5', QV 3" @ 47 TO CAX	
238.6	S	F	PIL	GN	BL1	FG				2				TR	DD40865	4.90	0.007		2 1/2" WH QV @ 50 TO CAX	
243.3	S	F	PIL	GN	BL1	FG				1					DD40866	4.70	0.005		QTZ FLOOD 3"	
248.1	S	F	PIL	GN	BL1	FG									DD40867	4.80	0.004		1", 1/2" WH QV, 2" QZ FLOOD	
253.1	S	F	PIL	GN	BL1	FG									DD40868	5.00	0.012			
258.3	S	F	PIL	GN	BL1	FG									DD40869	5.00	0.010			
263.1	S	F	PIL	GN	BL1	FG									DD40870	5.00	0.003		1/4" QV	
268.3	S	F	PIL	GN	BL3	FG				1					DD40871	5.00	0.006			
272.8	S	F	PIL	GN	BL2	FG									DD40872	4.70	0.005			
277.8	S	F	PIL	GN	BL2	FG									DD40873	5.00	0.005			
282.7	S	F	PIL	GN	BL2	FG							1	TR	DD40874	5.00	0.002			
287.7	S	F	PIL	GN	BL2	FG									DD40875	5.00	0.005			
292.7	S	F	PIL	GN	BL3	FG									DD40876	5.00	0.006			
297.8	S	F	PIL	GN	BL1	FG									DD40877	5.00	0.006			
302.8	S	F	PIL	GN	BL1	FG									DD40878	5.00	0.002			
307.8	S	F	PIL	GN	BL1	FG									DD40879	5.00	0.001			
314.3	S	F	PIL	GN	BL1	FG									DD40880	6.50	0.008			
336.0	S	F	MSV	BK	CHL	TLCCCH										21.70	0.000		BROKEN BLOCKS OF TLCH UM @ 1ST 2", EUHD PY&B	
356.0	S	F	STWK	BK	CHL	TLCCCH							2		DD40881	20.00	0.006		PY BLEBS IN CARBONATE STRINGERS	
361.0	S	F	STWK	BK	CHL	TLCCCH							5		DD40882	5.00	0.008			
366.0	S	F	STWK	BK	CHL	TLCCCH							3		DD40883	5.00	0.006			
382.0	S	F	STWK	BK	CHL	TLCCCH										16.00	0.000			
417.0	S	FM	STWK	BK	CHL	TLCCCH										35.00	0.000			
422.0	S	FM	STWK	BK	CHL	TLCCCH				1					DD40884	5.00	0.005		4" QV @ 22 TO CAX	
427.0	S	FM	STWK	BK	CHL	TLCCCH										5.00	0.000			
431.0	S	FM	STWK	BK	CHL	TLCCCH				2					DD40885	4.00	0.008		6" QZ FLOOD	
477.0	S	FM	STWK	BK	CHL	TLCCCH										46.00	0.000			
482.0	S	FM	STWK	BK	CHL	TLCCCH				3					DD40886	5.00	0.010			
492.0	S	FM	STWK	BK	CHL	TLCCCH										10.00	0.000		MORE TALCOSE NR END @ CONTACT W QV	
497.0	S	VF	MSV	WH	*	QV	C	35							DD40887	5.00	0.004		8' WH QV	
502.0	S	VF	MSV	WH	*	QV				40					DD40888	5.00	0.008			
507.0	S	FM	STWK	BN	ANK	CARB									DD40889	5.00	0.003		QZ & CARB STRINGERS	
512.0	S	FM	STWK	BN	ANK	CARB	C	18							DD40890	5.00	0.005			
517.0	S	FM	STWK	BN	ANK	CARB									DD40891	5.00	0.005			
522.0	S	FM	STWK	BN	ANK	CARB									DD40892	5.00	0.007			
526.0	S	FM	STWK	BN	ANK	CARB									DD40893	4.00	0.006			
531.0	S	FM	STWK	BN	ANK	CARB				80					DD40894	5.00	0.006		5' QV @ 18 TO CAX, CONTACT TO CARB	
536.0	S	FM	STWK	BN	ANK	CARB				50					DD40895	5.00	0.007		QV @ 32 TO CAX, CONTACT BTW QZ & CARB	
541.0	S	FM	STWK	BN	ANK	CARB									DD40896	5.00	0.008			

Royal O. Mines Inc. - Pamour Mine - DIAMOND DRILL CORE LOG

Page 3 of 4

Project: AK ZONE - SURFACE

Section: 212E

Logged By: L. Wong

Logged Date: 10/14/95

DRILL HOLE: 16513

North: 15731.0

East: 20523.0

Elev: 10968.0

Len: 797.0

OBI:

OBE:

INC:

Lease:

DIST	AZIM	DIP	DIST	AZIM	DIP	DIST	AZIM	DIP	DIST	AZIM	DIP	DIST	AZIM	DIP	DIST	AZIM	DIP
0.0	162	-84	0.0	0	0	0.0	0	0	0.0	0	0	0.0	0	0	0.0	0	0
800.0	162	-87	0.0	0	0	0.0	0	0	0.0	0	0	0.0	0	0	0.0	0	0
0.0	0	0	0.0	0	0	0.0	0	0	0.0	0	0	0.0	0	0	0.0	0	0
0.0	0	0	0.0	0	0	0.0	0	0	0.0	0	0	0.0	0	0	0.0	0	0

DIST	ROCK DESCRIPTION						STRUCTURE				MINERALS				VG	SAMPLE #	WIDTH	ASSAY	#	COMMENTS
	COM	GRS	TEXT	CO	ALT	NAME	B	A1	J	A2	QZ	PY	PO							
546.0	S	FM	STWK	BN	ANK	CARB									DD40897	5.00	0.007			
551.0	S	F	PILL	GN	BL3	FGALT				1					DD40898	5.00	0.014			
556.0	S	F	PILL	GN	BL4	FGALT				2		1			DD40899	5.00	0.009			
561.0	S	F	PILL	GN	BL3	FGALT				1					DD40900	5.00	0.337		3/4" GREY QV	
566.0	S	F	PILL	GN	BL3	FGALT				1					DD40901	5.00	0.014			
571.0	S	F	PILL	GN	BL4	FGALT				2					DD40902	5.00	0.061		1 1/2" WH QV	
576.0	S	F	PILL	GN	BL3	FGALT									DD40903	5.00	0.008			
581.0	S	F	PILL	GN	BL3	FGALT									DD40904	5.00	0.002			
586.0	S	F	PILL	GN	BL2	FGALT				2		3			DD40905	5.00	0.029		4" WH QZ @ 32 TO CAX	
591.0	S	F	PILL	GN	BL3	FGALT				2		3			DD40906	5.00	0.019			
596.0	S	F	PILL	GN	BL3	FGALT				1		3			DD40907	5.00	0.007		2 1/2" WH QZ @ 60 TO CAX	
601.0	S	F	PILL	GN	BL3	FGALT						1			DD40908	5.00	0.004			
606.0	S	F	PILL	GN	BL2	FGALT						1			DD40909	5.00	0.058			
611.0	S	F	PILL	GN	BL2	FGALT						1			DD40910	5.00	0.006			
616.0	S	F	PILL	GN	BL2	FGALT						1			DD40911	5.00	0.099			
621.0	S	F	PILL	GN	BL3	FGALT						1			DD40912	5.00	0.005			
626.0	S	F	PILL	GN	BL2	FGALT						1			DD40913	5.00	0.028		2" QZ FLOOD	
631.0	S	F	PILL	GN	BL3	FGALT						1			DD40914	5.00	0.008			
636.0	S	F	PILL	GN	BL3	FGALT				1					DD40915	5.00	0.053		1/2", 5-1/8" GREY QV	
641.0	S	F	PILL	GN	BL2	FGALT				2		3	1		DD40916	5.00	0.064		2-1/2", 2" WH QV	
646.0	S	F	PILL	GG	BL2	FGALT				5					DD40917	5.00	0.101		5" QZ FLOOD, 3-1/4" QV, FUCHSITE ALT	
651.0	S	F	PILL	GG	BL3	FGALT				1					DD40918	5.00	0.079		1" WH QV	
656.0	S	F	PILL	GG	BL3	FGALT									DD40919	5.00	0.035			
661.0	S	F	PILL	GG	BL4	FGALT									DD40920	5.00	0.025			
666.0	S	F	PILL	GG	BL4	FGALT						2		2	DD40921	5.00	0.013		1/4", 3/4", 1" GREY QV, @ 46 TO CAX	
671.0	S	F	PILL	GG	BL4	FGALT									DD40922	5.00	0.010			
676.0	S	F	PILL	GG	BL5	FGALT									DD40923	5.00	0.022			
681.0	S	F	PILL	BN	ANK	FGALT				2		1	2		DD40924	5.00	0.015		6" WH QV @ 32 CAX	
686.0	S	F	PILL	BN	ANK	FGALT									DD40925	5.00	0.006			
691.0	S	F	PILL	BN	ANK	FGALT									DD40926	5.00	0.003			
696.0	S	F	PILL	BN	ANK	FGALT				1					DD40927	5.00	0.047		2" M 1/2" WH QZ @ 26, 48 CAX RESPECTIVELY	
701.0	S	F	PILL	BN	BL2	FGALT				1					DD40928	5.00	0.008		QZ FLOOD 1 1/2"	
706.0	S	F	PILL	BN	BL4	FGALT				1					DD40929	5.00	0.070			
711.0	S	F	PILL	BN	BL3	FGALT				20		1			DD40930	5.00	0.127		QV ALNG STRIKE, 1/2" WH GY QV	
716.0	S	F	PILL	BN	BL4	FGALT				1		TR			DD40931	5.00	0.043		2-1" QV	
721.0	S	F	PILL	BN	BL4	FGALT				1		TR			DD40932	5.00	0.099		1/4" QV	
726.0	S	F	PILL	BN	BL3	FGALT									DD40933	5.00	0.038		8" QV @ 33 CAX	
731.0	S	F	PILL	BN	BL3	FGALT									DD40934	5.00	0.027			
736.0	S	F	PILL	BN	BL3	FGALT				1		TR			DD40935	5.00	0.007		1/2" QV	

Royal O. Mines Inc. - Pamour Mine - DIAMOND DRILL CORE LOG

Page 4 of 4

Project: AK ZONE - SURFACE

Section: 212E

Logged By: L. Wong

Logged Date: 10/14/95

DRILL HOLE: 16513

North: 15731.0

East: 20523.0

Elev: 10968.0

Len: 797.0

OBI:

OBE:

INC:

Lease:

DIST	AZIM	DIP	DIST	AZIM	DIP	DIST	AZIM	DIP	DIST	AZIM	DIP	DIST	AZIM	DIP	DIST	AZIM	DIP
0.0	162	-84	0.0	0	0	0.0	0	0	0.0	0	0	0.0	0	0	0.0	0	0
800.0	162	-87	0.0	0	0	0.0	0	0	0.0	0	0	0.0	0	0	0.0	0	0
0.0	0	0	0.0	0	0	0.0	0	0	0.0	0	0	0.0	0	0	0.0	0	0
0.0	0	0	0.0	0	0	0.0	0	0	0.0	0	0	0.0	0	0	0.0	0	0

DIST	COM	ROCK DESCRIPTION					STRUCTURE				MINERALS				VG	SAMPLE#	WIDTH	ASSAY	#	COMMENTS
		GRS	TEXT	CO	ALT	NAME	B	A1	J	A2	QZ	PY	PO							
741.0	S	F	PILL	BN	BL2	FGALT	0		0						DD40936	5.00	0.040			
746.0	S	F	PILL	BN	BL2	FGALT	0		0				TR		DD40937	5.00	0.013			
751.0	S	F	PILL	BN	BL3	FGALT	0		0	1			TR		DD40938	5.00	0.014		2-1/4" QV	
756.0	S	F	PILL	BN	BL4	FGALT	0		0				2		DD40939	5.00	0.018			
761.0	S	F	PILL	BN	BL4	FGALT	0		0						DD40940	5.00	0.072			
766.0	S	F	MSV	BN	BL4	FGALT	0		0						DD40941	5.00	0.025			
771.0	S	F	MSV	BN	BL4	FGALT	0		0				1		DD40942	5.00	0.013			
776.0	S	F	MSV	BN	BL4	FGALT	0		0						DD40943	5.00	0.008			
781.0	S	F	MSV	BN	BL4	FGALT	0		0	1			2		DD40944	5.00	0.011		1" WH QV, EUHL PY, FUCHSITE ALT	
786.0	S	F	MSV	BN	BL3	FGALT	0		0						DD40945	5.00	0.007			
791.0	S	F	MSV	BN	BL4	FGALT	0		0	1					DD40946	5.00	0.007		2" QZ FLOOD	
797.0	S	F	MSV	BN	BL4	FGALT	0		0				1		DD40947	6.00	0.007		FUCHSITE ALT	

Date Printed: 10/25/95

Royal Oak Mines Inc. - Pamour Mine - DIAMOND DRILL CORE LOG

Page 1 of 3

Project: AK ZONE - SURFACE

Section:

Logged By: L.WONG

Logged Date: 10/19/95

DRILL HOLE: 16514

North: 15812.0

East: 20603.0

Elev: ~~10240~~<sup>10268</sup>

Len: 770.0

OBI:

OBE:

INC:

Lease:

DIST	AZIM	DIP	DIST	AZIM	DIP	DIST	AZIM	DIP	DIST	AZIM	DIP	DIST	AZIM	DIP	DIST	AZIM	DIP
200.0	175	87	0.0	0	0	0.0	0	0	0.0	0	0	0.0	0	0	0.0	0	0
400.0	175	87	0.0	0	0	0.0	0	0	0.0	0	0	0.0	0	0	0.0	0	0
600.0	165	87	0.0	0	0	0.0	0	0	0.0	0	0	0.0	0	0	0.0	0	0
800.0	162	87	0.0	0	0	0.0	0	0	0.0	0	0	0.0	0	0	0.0	0	0

STRUCTURE				MINERALS					
ROCK DESCRIPTION						B/S	J/F	GANG	METALLIC

CLAIM No: P7673

Drill Contractor: McKenzie Drilling Ltd.

Core Size: 8Q

Core Storage: N.A. - Core Whole Sampled

Date Drilled: Oct. 1995

DIST	COM	GRS	TEXT	CO	ALT	NAME	B	A1	J	A2	QZ	PY	PO	VG	SAMPLE#	WIDTH	ASSAY	#	COMMENTS
7.0	***	***	****	**	***	CAS		0		0						7.00	0.000		CASING
12.0	S	F	PILL	GN	BL2	FG		0		0					DD40948	5.00	0.008		GN,FG,CARB(CALCITE) ACCICULAR CRYSTALS
17.0	S	F	PILL	GN	BL2	FG		0		0		TR			DD40949	5.00	0.009		MASSIVE FRACT. WATERSEAMS@ NR 17', PY BLEB
21.2	S	F	PILL	GN	BL2	FG		0		0					DD40950	4.20	0.008		SHEAR ZONE @ 20.8'
26.2	S	F	MSV	GY	BL4	FGALT	C	50		0		TR			DD40951	5.00	0.067		MED.GREY,FG,MASSIVE CARB.STRINGERS
31.2	S	F	MSV	GY	BL4	FGALT		0		0					DD40952	5.00	0.006		FG, DISS. PY
35.2	S	F	MSV	GY	BL4	FGALT		0		0					DD40953	4.00	0.006		
38.3	S	F	MSV	GY	BL4	FGALT		0		0					DD40954	3.10	0.008		
58.3	S	FM	STWK	BK	BL2	TLCCCH	C	70		0		TR	TR		DD40955	20.00	0.005		BK,UM,FINE-MED.GRAINED CHL ALT. MASS WITH
78.3	S	FM	STWK	BK	BL2	TLCCCH		0		0					DD40956	20.00	0.000		FROM 58.3:STRINGERS X-CUTTING CREATING STOCK
98.3	S	FM	STWK	BK	BL2	TLCCCH		0		0		TR	TR		DD40957	20.00	0.009		FROM 58.3:WORK TEXT. CARB.STRINGERS
118.3	S	FM	STWK	BK	BL2	TLCCCH		0		0					DD40958	20.00	0.000		FROM 98.3:VERY FINELY DISS. PY,PO
138.3	S	FM	STWK	BK	BL2	TLCCCH		0		0		TR			DD40959	20.00	0.005		
158.3	S	FM	STWK	BK	BL2	TLCCCH		0		0					DD40960	20.00	0.000		
178.3	S	FM	STWK	BK	BL2	TLCCCH		0		0		TR			DD40961	20.00	0.005		
198.3	S	FM	STWK	BK	BL2	TLCCCH		0		0					DD40962	20.00	0.000		
218.3	S	FM	STWK	BK	BL2	TLCCCH		0		0		TR			DD40963	20.00	0.005		
238.3	S	FM	STWK	BK	BL2	TLCCCH		0		0					DD40964	20.00	0.000		
258.3	S	FM	STWK	BK	BL2	TLCCCH		0		0		TR			DD40965	20.00	0.005		
275.0	S	FM	STWK	BK	BL2	TLCCCH		0		0					DD40966	17.30	0.000		
285.0	S	F	PILL	GN	BL3	FGCB		0		0					DD40967	5.00	0.005		GN,FG,PERVASIVE CARB.ALT,CARB STR,FZ@278'BRO
290.0	S	F	PILL	GN	BL3	FGCB		0		0					DD40968	5.00	0.007		CORE ZONE, CHLORITE ALT.
295.0	S	F	PILL	GN	BL3	FGCB		0		0					DD40969	5.00	0.000		
300.0	S	F	PILL	GN	BL3	FGCB		0		0					DD40970	5.00	0.006		
305.0	S	F	PILL	GN	BL3	FGCB		0		0					DD40971	5.00	0.006		
310.0	S	F	PILL	GN	BL3	FGCB		0		0					DD40972	5.00	0.040		
315.0	S	F	PILL	GN	BL3	FGCB		0		0					DD40973	5.00	0.001		
320.0	S	F	PILL	GN	BL3	FGCB		0		0					DD40974	5.00	0.007		
325.0	S	F	PILL	GN	BL3	FGCB		0		0					DD40975	5.00	0.007		
330.0	S	F	PILL	GN	BL3	FGCB		0		0					DD40976	5.00	0.003		
335.0	S	F	PILL	GN	BL3	FGCB		0		0					DD40977	5.00	0.003		
340.0	S	F	PILL	GN	BL3	FGCB		0		0					DD40978	5.00	0.023		
345.0	S	F	PILL	GN	BL4	FGCB		0		0					DD40979	5.00	0.014		
350.0	S	F	MSV	GG	BL4	FGALT		0		0					DD40980	5.00	0.003		FG,GREY GREEN.
355.0	S	F	MSV	GG	BL4	FGALT		0		0					DD40981	5.00	0.004		
360.0	S	F	MSV	GG	BL3	FGALT		0		0					DD40982	5.00	0.003		
364.0	S	F	PILL	GG	BL3	FGCB		0		0					DD40983	4.00	0.002		

Royal Oak Mines Inc. - Pamour Mine - DIAMOND DRILL CORE LOG

Page 2 of 3

Project: AK ZONE - SURFACE

Section:

Logged By: L.WONG

Logged Date: 10/19/95

DRILL HOLE: 16514

North: 15812.0

East: 20603.0

Elev: 109.0

Len: 770.0

OBI:

OBE:

INC:

Lease:

DIST	AZIM	DIP	DIST	AZIM	DIP	DIST	AZIM	DIP	DIST	AZIM	DIP	DIST	AZIM	DIP	DIST	AZIM	DIP
200.0	175	87	0.0	0	0	0.0	0	0	0.0	0	0	0.0	0	0	0.0	0	0
400.0	175	87	0.0	0	0	0.0	0	0	0.0	0	0	0.0	0	0	0.0	0	0
600.0	165	87	0.0	0	0	0.0	0	0	0.0	0	0	0.0	0	0	0.0	0	0
800.0	162	87	0.0	0	0	0.0	0	0	0.0	0	0	0.0	0	0	0.0	0	0

DIST	ROCK DESCRIPTION						STRUCTURE				MINERALS				VG	SAMPLE#	WIDTH	ASSAY	#	COMMENTS			
	COM	GRS	TEXT	CO	ALT	NAME	B	A1	J	A2	QZ	PY	PO										
367.8	S	F	PILL	GG	BL3	FGCB	0		0						DD40979	3.20	0.002						
372.8	S	F	MSV	GY	BL4	FGALT	0		0						DD40980	5.00	0.010						
377.8	S	F	MSV	GY	BL4	FGALT	0		0						DD40981	5.00	0.006						
382.8	S	F	MSV	GY	BL4	FGALT	0		0						DD40982	5.00	0.004						
387.8	S	F	MSV	GY	BL4	FGALT	0		0						DD40983	5.00	0.007						
392.8	S	F	ISBX	GY	BL4	FGALT	0		0						DD40984	5.00	0.004						
397.0	S	F	ISBX	GG	BL3	FGALT	0		0						DD40985	4.20	0.154						
417.0	S	F	STWK	BK	BL1	TLCCCH	0		0			1			0	20.00	0.000						
437.0	S	F	STWK	BK	BL1	TLCCCH	0		0			3			DD40986	20.00	0.004		FG, DK.GN TO BK, CARB.STRINGERS				
457.0	S	F	STWK	BK	BL1	TLCCCH	0		0						0	20.00	0.000						
477.0	S	F	STWK	BK	BL1	TLCCCH	0		0						DD41103	20.00	0.004						
497.0	S	F	STWK	BK	BL1	TLCCCH	0		0			1			0	20.00	0.000						
517.0	S	F	STWK	BK	BL1	TLCCCH	0		0						DD41104	20.00	0.005						
537.0	S	F	STWK	BK	BL1	TLCCCH	0		0						0	20.00	0.000						
557.0	S	F	STWK	BK	BL1	TLCCCH	0		0						DD41105	20.00	0.007						
587.0	S	F	STWK	BK	BL1	TLCCCH	0		0						0	30.00	0.000						
592.0	S	FM	STWK	BN	ANK	CARB	0		0			1	TR		DD41106	5.00	0.006						
597.0	S	FM	STWK	BN	ANK	CARB	0		0		1				DD41107	5.00	0.007		.5" GREY QV 52DEG TO CAX				
602.0	S	FM	STWK	BN	ANK	CARB	0		0		1				DD41108	5.00	0.007		1.25" GREY QV W FU 45DEG TO CAX				
607.0	S	FM	STWK	BN	ANK	CARB	0		0		1				DD41109	5.00	0.010		.5" GREY QV				
612.0	S	FM	STWK	BN	ANK	CARB	0		0		1				DD41110	5.00	0.013		.5 GREY QTZ FLOOD				
617.0	S	FM	STWK	BN	ANK	CARB	0		0		TR				DD41111	5.00	0.004						
622.0	S	FM	STWK	BN	ANK	CARB	0		0						DD41112	5.00	0.003						
627.0	S	FM	STWK	BN	ANK	CARB	0		0						DD41113	5.00	0.006						
632.0	S	FM	STWK	BN	ANK	CARB	0		0						DD41114	5.00	0.004						
637.0	S	FM	STWK	BN	ANK	CARB	0		0						DD41115	5.00	0.003						
642.0	S	FM	STWK	BN	ANK	CARB	0		0						DD41116	5.00	0.003						
647.0	S	FM	STWK	GN	ANK	CARB	0		0		1				DD41117	5.00	0.005		CO. COLUMN HAS TN AS WELL AS GN				
652.0	S	FM	STWK	GN	ANK	CARB	0		0						DD41118	5.00	0.005						
657.0	S	FM	STWK	GN	ANK	CARB	0		0		1				DD41119	5.00	0.004		1" WH.QTZ PINCHOUT				
662.0	S	FM	STWK	GN	ANK	CARB	0		0						DD41120	5.00	0.004						
667.0	S	FM	STWK	GN	ANK	CARB	0		0						DD41121	5.00	0.013						
672.0	S	FM	STWK	GN	ANK	CARB	0		0		1				DD41122	5.00	0.016		.5" GREY QV - 54DEG. TO CAX				
677.0	S	FM	STWK	GN	ANK	CARB	0		0		1		TR		DD41123	5.00	0.001						
682.0	S	FM	STWK	GN	ANK	CARB	0		0						DD41124	5.00	0.006						
687.0	S	F	MSV	GN	FU	FGCB	0		0		2		2		DD41125	5.00	0.011		CO. COLUMN SWITCHES JUST TO GN				
691.0	S	F	MSV	GN	FU	FGCB	0		0		1		2		DD41126	4.00	0.142		DISS.PY ALONG FRACTURES, QTZ VEINLETS				
696.0	S	F	MSV	GN	FU	FGCB	0		0						DD41127	5.00	0.073		QTZ FLOOD 1-2' LONG				
700.0	S	F	MSV	TN	BL3	FGALT	0		0		2		4		DD41128	4.00	0.205		QV-6" WH.QV 43DEG. TO CAX, .5"				

Royal Oak Mines Inc. - Pamour Mine - DIAMOND DRILL CORE LOG

Page 3 of 3

Project: AK ZONE - SURFACE

Section:

Logged By: L.WONG

Logged Date: 10/19/95

DRILL HOLE: 16514

North: 15812.0

East: 20603.0

Elev: 109.0

Len: 770.0

OBI: OBE:

INC:

Lease:

DIST	AZIM	DIP	DIST	AZIM	DIP	DIST	AZIM	DIP	DIST	AZIM	DIP	DIST	AZIM	DIP	DIST	AZIM	DIP
200.0	175	87	0.0	0	0	0.0	0	0	0.0	0	0	0.0	0	0	0.0	0	0
400.0	175	87	0.0	0	0	0.0	0	0	0.0	0	0	0.0	0	0	0.0	0	0
600.0	165	87	0.0	0	0	0.0	0	0	0.0	0	0	0.0	0	0	0.0	0	0
800.0	162	87	0.0	0	0	0.0	0	0	0.0	0	0	0.0	0	0	0.0	0	0

DIST	ROCK DESCRIPTION						STRUCTURE		MINERALS				VG	SAMPLE#	WIDTH	ASSAY	#	COMMENTS
	COM	GRS	TEXT	CO	ALT	NAME	B/S	J/F	GANG	METALLIC	PY	PO						
705.0	S	F	MSV	TN	BL3	FGALT	0	0	1		1			DD41129	5.00	0.068		
710.0	S	FM	MSV	TN	ANK	CARB	0	0	TR		1			DD41130	5.00	0.019		
715.0	S	FM	MSV	TN	ANK	CARB	0	0	TR		1			DD41131	5.00	0.010		
720.0	S	FM	MSV	TN	ANK	CARB	0	0	TR		1			DD41132	5.00	0.004		
725.0	S	FM	MSV	TN	ANK	CARB	0	0	TR		1			DD41133	5.00	0.025		
730.0	S	FM	MSV	TN	ANK	CARB	0	0	TR		1			DD41134	5.00	0.006		.5",QTZ. FLOOD 1.5"
735.0	S	FM	MSV	TN	ANK	CARB	0	0			1			DD41135	5.00	0.008		
740.0	S	FM	MSV	TN	ANK	CARB	0	0						DD41136	5.00	0.006		
745.0	S	F	PILL	TN	BL2	FGALT	0	0						DD41137	5.00	0.006		
750.0	S	F	PILL	TN	BL2	FGALT	0	0	1		3			DD41138	5.00	0.009		2-1" WH.QV 38DEG. TO CAX
755.0	S	FM	PILL	BN	BL2	CARB	0	0	TR					DD41139	5.00	0.007		
760.0	S	FM	PILL	BN	BL2	CARB	0	0	TR					DD41140	5.00	0.010		
765.0	S	FM	PILL	BN	BL2	CARB	0	0	TR		1			DD41141	5.00	0.017		
770.0	S	FM	PILL	BN	BL2	CARB	0	0	TR		1			DD41142	5.00	0.008		

Date Printed: 11/01/95

Royal Oak Mines Inc. - Pamour Mine - DIAMOND DRILL CORE LOG

Page 1 of 5

Project: AK ZONE - SURFACE

Section:

Logged By: L. WONG

Logged Date: 10/19/95

DRILL HOLE: 16515

North: 15961.0

East: 21238.0

Elev: 10968.0

Len: 850.0

OBI: OBE:

INC:

Lease:

DIST	AZIM	DIP	DIST	AZIM	DIP	DIST	AZIM	DIP	DIST	AZIM	DIP	DIST	AZIM	DIP	DIST	AZIM	DIP
200.0	174	70	0.0	0	0	0.0	0	0	0.0	0	0	0.0	0	0	0.0	0	0
400.0	171	68	0.0	0	0	0.0	0	0	0.0	0	0	0.0	0	0	0.0	0	0
600.0	167	65	0.0	0	0	0.0	0	0	0.0	0	0	0.0	0	0	0.0	0	0
800.0	167	65	0.0	0	0	0.0	0	0	0.0	0	0	0.0	0	0	0.0	0	0

CLAIM No: P7673

Drill Contractor: MacKenzie Drilling Ltd.

Core Size: 8Q

Core Storage: N.A. - Core Whole Sampled

Date Drilled: Oct. 1995

DIST	ROCK DESCRIPTION						STRUCTURE		MINERALS				VG	SAMPLE#	WIDTH	ASSAY #	COMMENTS
	COM	GRS	TEXT	CO	ALT	NAME	B	A1	J	A2	QZ	PY					
30.5						CAS	0		0					0	30.50	0.000	
36.0	S	F	MSV	GN	BL5	FGALT	0		0					DD41143	5.50	0.003	FAIRLY WELL BLEACHED
41.5	S	F	MSV	GN	BL5	FGALT	0		0					DD41144	5.50	0.002	
46.0	S	F	MSV	GN	BL5	FGALT	0		0					DD41145	4.50	0.004	
51.0	S	F	PIL	GN	BL5	FGALT	0		0					DD41146	5.00	0.002	
56.0	S	F	PIL	GN	BL5	FGALT	0		0	1				DD41147	5.00	0.001	1/8" QV
61.0	S	F	PIL	GN	BL5	FGALT	0		0					DD41148	5.00	0.003	
66.0	S	F	VUG	GN	BL5	FGALT	0		0					DD41149	5.00	0.003	
71.0	S	F	VUG	GN	BL8	FGALT	0		0					DD41150	5.00	0.013	
76.0	S	F	VUG	GN	CHL	FGALT	0		0					DD41151	5.00	0.003	
81.0	S	F	VUG	GN	BL5	FGALT	0		0					DD41152	5.00	0.002	
86.0	S	F	VUG	GN	BL6	FGALT	0		0					DD41153	5.00	0.001	
91.0	S	F	VUG	GN	BL6	FGALT	0		0					DD41154	5.00	0.003	
96.0	S	F	PIL	GN	BL6	FGALT	0		0					DD41155	5.00	0.004	
101.0	S	F	PIL	GN	BL6	FGALT	0		0					DD41156	5.00	0.001	
106.0	S	F	PIL	GN	BL6	FGALT	0		0					DD41157	5.00	0.003	
111.0	S	F	PIL	GN	BL6	FGALT	0		0					DD41158	5.00	0.001	
116.0	S	F	PIL	GN	BL6	FGALT	0		0					DD41159	5.00	0.001	
121.0	S	F	PIL	GN	BL6	FGALT	0		0					DD41160	5.00	0.003	
126.0	S	F	PIL	GN	BL6	FGALT	0		0					DD41161	5.00	0.003	
131.0	S	F	PIL	GN	BL6	FGALT	0		0					DD41162	5.00	0.006	
136.0	S	F	PIL	GN	BL6	FGALT	0		0					DD41163	5.00	0.006	
141.0	S	F	PIL	GN	BL6	FGALT	0		0					DD41164	5.00	0.003	
146.0	S	F	PIL	GN	BL6	FGALT	0		0					DD41165	5.00	0.003	
151.0	S	F	PIL	GN	BL6	FGALT	0		0					DD41166	5.00	0.003	
156.0	S	F	PIL	GN	BL6	FGALT	0		0					DD41167	5.00	0.001	
161.0	S	F	PIL	GN	BL5	FGALT	0		0					DD41168	5.00	0.003	
166.0	S	F	PIL	GN	BL5	FGALT	0		0					DD41169	5.00	0.002	
171.0	S	F	PIL	GN	BL5	FGALT	0		0					DD41170	5.00	0.004	
176.0	S	F	PIL	GN	BL5	FGALT	0		0					DD41171	5.00	0.005	
181.0	S	F	PIL	GN	BL3	FGALT	0		0					DD41172	5.00	0.001	
186.0	S	F	PIL	GN	BL3	FGALT	0		0					DD41173	5.00	0.001	
191.0	S	F	PIL	GN	BL3	FGALT	0		0					DD41174	5.00	0.003	
196.0	S	F	PIL	GN	BL3	FGALT	0		0					DD41175	5.00	0.002	
201.0	S	F	PIL	GN	BL3	FGALT	0		0					DD41176	5.00	0.004	
206.0	S	F	PIL	GN	BL3	FGALT	0		0					DD41177	5.00	0.003	
211.0	S	F	PIL	GN	BL3	FGALT	0		0					DD41178	5.00	0.007	
215.0	S	F	PIL	GN	BL3	FGALT	0		0					DD41179	4.00	0.002	



## Royal Oak Mines Inc. - Pamour Mine - DIAMOND DRILL CORE LOG

Page 2 of 5

Project: AK ZONE - SURFACE

Section:

Logged By: L. WONG

Logged Date: 10/19/95

DRILL HOLE: 16515

North: 15961.0

East: 21238.0

Elev: 10968.0

Len: 850.0

OBI:

OBE:

INC:

Lease:

DIST	AZIM	DIP	DIST	AZIM	DIP	DIST	AZIM	DIP	DIST	AZIM	DIP	DIST	AZIM	DIP	DIST	AZIM	DIP
200.0	174	70	0.0	0	0	0.0	0	0	0.0	0	0	0.0	0	0	0.0	0	0
400.0	171	68	0.0	0	0	0.0	0	0	0.0	0	0	0.0	0	0	0.0	0	0
600.0	167	65	0.0	0	0	0.0	0	0	0.0	0	0	0.0	0	0	0.0	0	0
800.0	167	65	0.0	0	0	0.0	0	0	0.0	0	0	0.0	0	0	0.0	0	0

DIST	ROCK DESCRIPTION						STRUCTURE		MINERALS				VG	SAMPLE#	WIDTH	ASSAY	#	COMMENTS
	COM	GRS	TEXT	CO	ALT	NAME	B/S	J/F	GANG		METALLIC							
							B	A1	J	A2	QZ	PY						
219.0	S	F	PIL	GN	BL3	FGALT	0	0						DD41180	3.00	0.007		CALCITE PORPHYROBLAST
222.5	S	F	MSV	GN	CHL	TLCCH	0	0						0	3.50	0.000		
227.0	S	F	MSV	GN	BL4	FGALT	0	0						DD41181	4.50	0.148		
232.0	S	F	MSV	GN	BL4	FGALT	0	0						DD41182	5.00	0.005		
237.0	S	F	MSV	GN	BL4	FGALT	0	0						DD41183	5.00	0.007		
242.0	S	F	MSV	GN	BL4	FGALT	0	0				TR		DD41184	5.00	0.004		
246.0	S	F	MSV	GN	BL4	FGALT	0	0				TR		DD41185	4.00	0.004		DISS. PY IN CARB VEIN
250.6	S	F	MSV	GN	BL4	FGALT	0	0						DD41186	4.60	0.002		
251.3	S	F	MSV	GN	CHL	TLCCH	0	0						DD41187	0.70	0.023		
256.0	S	F	MSV	GY	BL4	FGALT	0	0						DD41200	4.70	0.001		
260.0	S	F	MSV	GY	BL4	FGALT	0	0						DD41201	4.00	0.001		
265.8	S	F	MSV	BK	CHL	TLCCH	0	0						0	5.80	0.000		
271.0	S	F	PIL	GN	BL2	FGCC	0	0						DD41202	5.20	0.004		
276.2	S	F	PIL	GN	CHL	FGCC	0	0						DD41203	5.20	0.003		CALCITE PORPHYROBLASTS
281.0	S	F	PIL	GN	CHL	FGCC	0	0						DD41204	4.80	0.015		
285.8	S	F	PIL	GN	CHL	FGCC	0	0						DD41205	4.80	0.004		
291.0	S	F	MSV	GN	CHL	FGALT	0	0						DD41206	5.20	0.006		
296.0	S	F	MSV	GN	CHL	FGALT	0	0						DD41207	5.00	0.001		
301.0	S	F	MSV	GN	CHL	FGALT	0	0						DD41208	5.00	0.001		
305.0	S	F	MSV	GN	CHL	FGALT	0	0						DD41209	4.00	0.003		
309.0	S	F	PIL	GN	CHL	FGALT	0	0						DD41210	4.00	0.001		
313.0	S	F	PIL	GN	CHL	FGALT	0	0						DD41211	4.00	0.003		
315.4	S	F	PIL	GN	CHL	TLCCH	0	0						0	2.40	0.000		
320.0	S	F	STWK	GN	CHL	FGALT	0	0						DD41212	4.60	0.004		CALCITE STRGS STWK
325.0	S	F	STWK	GN	CHL	FGALT	0	0						DD41213	5.00	0.004		CHL STRGS + VEINLETS
329.0	S	F	STWK	GN	CHL	FGALT	0	0						DD41214	4.00	0.006		
333.0	S	F	STWK	GN	CHL	FGALT	0	0						DD41215	4.00	0.002		
337.0	S	F	STWK	GN	CHL	FGALT	0	0						DD41216	4.00	0.000		
338.0	S	F	MSV	GN	TLH	TLCCH	0	0						0	1.00	0.000		ALT COLUMN TLCH FOR 338'
343.0	S	F	MSV	GG	BL3	FGALT	0	0						DD41217	5.00	0.008		
348.0	S	F	MSV	GN	BL3	FGALT	0	0						DD41218	5.00	0.003		
353.0	S	F	MSV	GN	BL3	FGALT	0	0						DD41219	5.00	0.012		
358.0	S	F	MSV	GN	BL3	FGALT	0	0						DD41220	5.00	0.003		
364.5	S	F	MSV	GN	BL3	FGALT	0	0						DD41221	6.50	0.006		VF DISS. PY
384.5	S	F	STWK	BK	TLH	TLCCH	0	0			TR			DD41222	20.00	0.008		
412.0	S	F	STWK	BK	TLH	TLCCH	0	0						0	27.50	0.000		
415.6	S	F	STWK	BK	TLH	TLCCH	0	0						DD41223	3.60	0.003		2-1/2" WH QV @ 43DEGREES CAX
420.0	S	F	MSV	GN	BL3	FGALT	0	0						DD41224	4.40	0.002		1" WH QV @ 35 CAX
425.0	S	F	MSV	GN	BL3	FGALT	0	0						DD41225	5.00	0.004		1/4" 8" QZ FLOOD

Royal Oak Mines Inc. - Pamour Mine - DIAMOND DRILL CORE LOG

Page 3 of 5

Project: AK ZONE - SURFACE

Section:

Logged By: L. WONG

Logged Date: 10/19/95

DRILL HOLE: 16515

North: 15961.0

East: 21238.0

Elev: 10968.0

Len: 850.0

OBI:

OBE:

INC:

Lease:

DIST	AZIM	DIP	DIST	AZIM	DIP	DIST	AZIM	DIP	DIST	AZIM	DIP	DIST	AZIM	DIP	DIST	AZIM	DIP
200.0	174	70	0.0	0	0	0.0	0	0	0.0	0	0	0.0	0	0	0.0	0	0
400.0	171	68	0.0	0	0	0.0	0	0	0.0	0	0	0.0	0	0	0.0	0	0
600.0	167	65	0.0	0	0	0.0	0	0	0.0	0	0	0.0	0	0	0.0	0	0
800.0	167	65	0.0	0	0	0.0	0	0	0.0	0	0	0.0	0	0	0.0	0	0

DIST	ROCK DESCRIPTION						STRUCTURE		MINERALS		PY	VG	SAMPLE#	WIDTH	ASSAY	#	COMMENTS
	COM	GRS	TEXT	CO	ALT	NAME	B/S	J/F	GANG METALLIC								
							B	A1	J	A2							
430.0	S	F	MSV	GN	BL3	FGALT	0	0	1			DD41226	5.00	0.002			
435.0	S	F	MSV	GN	BL3	FGALT	0	0	TR			DD41227	5.00	0.003			
440.0	S	F	MSV	GN	BL2	FGALT	0	0				DD41228	5.00	0.004			
445.0	S	F	MSV	GN	BL2	FGALT	0	0				DD41229	5.00	0.002			
450.0	S	F	MSV	GN	BL2	FGALT	0	0			TR	DD41230	5.00	0.003			
455.0	S	F	MSV	GN	BL2	FGALT	0	0			TR	DD41231	5.00	0.002			
460.0	S	F	MSV	GN	BL2	FGALT	0	0			TR	DD41232	5.00	0.002			
465.0	S	F	MSV	GN	BL2	FGALT	0	0			TR	DD41233	5.00	0.001		VF DISS. PY IN BASALT	
470.0	S	F	MSV	GN	BL2	FGALT	0	0			TR	DD41234	5.00	0.004			
475.0	S	F	MSV	GN	BL2	FGALT	0	0				DD41235	5.00	0.002			
480.0	S	F	MSV	GN	BL2	FGALT	0	0				DD41236	5.00	0.011			
485.0	S	F	MSV	GN	BL2	FGALT	0	0				DD41237	5.00	0.001			
490.0	S	F	MSV	GN	BL2	FGALT	0	0				DD41238	5.00	0.004			
495.0	S	F	MSV	GN	BL2	FGALT	0	0	1			DD41239	5.00	0.001		3/4" GY QV @ 55DEGREES	
500.0	S	F	MSV	GN	BL2	FGALT	0	0				DD41240	5.00	0.003			
505.0	S	F	MSV	GN	BL2	FGALT	0	0				DD41241	5.00	0.001			
510.0	S	F	MSV	GN	BL2	FGALT	0	0				DD41242	5.00	0.006			
515.0	S	F	MSV	GN	BL2	FGALT	0	0	TR			DD41243	5.00	0.003			
520.0	S	F	MSV	GN	BL2	FGALT	0	0	TR		1	DD41244	5.00	0.006			
525.0	S	F	MSV	GN	BL2	FGALT	0	0				DD41245	5.00	0.002			
530.0	S	F	MSV	GG	BL4	FGALT	S	45			1	DD41246	5.00	0.003		TUFFACEOUS	
535.0	S	F	MSV	GG	BL5	FGALT	0	0			1	DD41247	5.00	0.005			
540.0	S	F	MSV	GG	BL4	FGALT	0	0				DD41248	5.00	0.001			
545.0	S	F	BL4	GG	BL4	FGALT	0	0			1	DD41249	5.00	0.001			
550.0	S	F	BL4	GG	BL4	FGALT	0	0				DD41250	5.00	0.001			
555.0	S	F	BL4	GG	BL4	FGALT	0	0	1			DD42364	5.00	0.006			
560.0	S	F	BL4	GG	BL4	FGALT	0	0			1	DD42365	5.00	0.155			
565.0	S	F	BL4	GG	BL4	FGALT	0	0				DD42366	5.00	0.006			
570.0	S	F	BL4	GG	BL4	FGALT	0	0	1			DD42367	5.00	0.004			
573.7	S	F	BL4	GG	BL4	FGALT	0	0	1			DD42368	5.70	0.028			
578.0	S	FM	MSV	BN	ANK	CARB	0	0			TR	DD42369	4.30	0.007			
583.0	S	FM	MSV	BN	ANK	CARB	0	0				DD42370	5.00	0.003			
588.0	S	FM	MSV	BN	ANK	CARB	0	0				DD42371	5.00	0.004			
592.0	S	FM	STWK	BN	ANK	CARB	0	0	1			DD42372	4.00	0.005		EPID ALT. LAST 1'	
597.0	S	FM	STWK	BN	ANK	CARB	0	0	20		1	DD42373	5.00	0.019		8" QZ FLOOD	
602.0	S	FM	STWK	BN	ANK	CARB	0	0	2		TR	DD42374	5.00	0.005			
607.0	S	FM	STWK	BN	ANK	CARB	0	0	1		TR	DD42375	5.00	0.004			
612.0	S	FM	STWK	BN	ANK	CARB	0	0	1		TR	DD42376	5.00	0.004			
617.0	S	FM	STWK	BN	ANK	CARB	0	0	1		1	DD42377	5.00	0.000			

## Royal Oak Mines Inc. - Pamour Mine - DIAMOND DRILL CORE LOG

Page 4 of 5

Project: AK ZONE - SURFACE

Section:

Logged By: L. WONG

Logged Date: 10/19/95

DRILL HOLE: 16515

North: 15961.0

East: 21238.0

Elev: 10968.0

Len: 850.0

OBI:

OBE: INC: Lease:

DIST	AZIM	DIP	DIST	AZIM	DIP	DIST	AZIM	DIP	DIST	AZIM	DIP	DIST	AZIM	DIP	DIST	AZIM	DIP
200.0	174	70	0.0	0	0	0.0	0	0	0.0	0	0	0.0	0	0	0.0	0	0
400.0	171	68	0.0	0	0	0.0	0	0	0.0	0	0	0.0	0	0	0.0	0	0
600.0	167	65	0.0	0	0	0.0	0	0	0.0	0	0	0.0	0	0	0.0	0	0
800.0	167	65	0.0	0	0	0.0	0	0	0.0	0	0	0.0	0	0	0.0	0	0

DIST	ROCK DESCRIPTION						STRUCTURE		MINERALS				VG	SAMPLE#	WIDTH	ASSAY	#	COMMENTS	
	COM	GRS	TEXT	CO	ALT	NAME	B/S	J/F	GANG	METALLIC	PY								
							B	A1	J	A2	QZ								
622.0	S	FM	STWK	BN	ANK	CARB								DD42378	5.00	0.015			
628.0	M	VF	MSV	WH	ANK	QV	C	40						DD42379	6.00	0.004		FU ALT	
633.0		F	MSV	GG	BL3	FGALT								DD42380	5.00	0.026			
638.0		F	MSV	GG	BL3	FGALT								DD42381	5.00	0.010			
643.0		F	MSV	GG	BL3	FGALT								DD42382	5.00	0.004			
648.0		F	MSV	GG	BL3	FGALT								DD42383	5.00	0.002			
653.0		F	MSV	GG	BL3	FGALT								DD42384	5.00	0.007			
658.0		F	PIL	GG	BL3	FGALT								DD42385	5.00	0.039		1" QZ	
663.0		F	PIL	GG	BL3	FGALT								DD42386	5.00	0.003		2" QZ BLOB	
668.0		F	PIL	GG	BL3	FGALT								DD42387	5.00	0.623		1/2" PARALLEL TCA 1'	
673.0		F	PIL	GG	BL3	FGALT								DD42388	5.00	0.018			
678.0		F	PIL	GG	BL3	FGALT								DD42389	5.00	0.013			
683.0		F	PIL	GG	BL3	FGALT								DD42390	5.00	0.013		1/2" @ 40	
688.0		F	PIL	GG	BL3	FGALT								DD42391	5.00	0.007			
693.0		F	PIL	GG	BL3	FGALT								DD42392	5.00	0.011		1/2" @ 40	
698.0		F	PIL	GG	BL3	FGALT								DD42393	5.00	0.004			
703.0		F	PIL	GG	BL4	FGALT								DD42394	5.00	0.017			
708.0		F	PIL	GG	BL4	FGALT								DD42395	5.00	0.009			
713.0		F	MSV	GG	BL4	FGALT								DD42396	5.00	0.003		1/2" WH QV @ 30	
718.0		F	MSV	GG	BL4	FGALT								DD42397	5.00	0.008		1" WH QV @ 24	
723.0		F	MSV	GG	BL4	FGALT								DD42398	5.00	0.006		1 1/2" GY QV @ 60	
728.0		F	MSV	GG	BL4	FGALT								DD42399	5.00	0.007		1/2" GY QV	
733.0		F	MSV	GG	BL4	FGALT								DD42400	5.00	0.010			
738.0		F	MSV	GG	BL4	FGALT								DD42401	5.00	0.029			
743.0		F	MSV	GG	BL4	FGALT								DD42402	5.00	0.010	1	" QV 1/2" QV VG @ CONTACT W QV+BSLT	
747.0		F	MSV	GG	BL4	FGALT								DD42403	4.00	0.023			
752.0		F	BED	GY	BL2	GWK	B	45						DD42404	5.00	0.086			
757.0		F	BED	GY	BL2	GWK								DD42405	5.00	0.069		VG IN QV 1/4" @ 30 X-CUTTING BEDDING	
762.0		F	BED	GY	BL2	GWK								DD42406	5.00	0.003			
767.0		F	BED	GY	BL2	GWK								DD42407	5.00	0.003			
772.0		F	BED	GY	BL2	GWK								DD42408	5.00	0.011			
777.0		F	BED	GY	BL2	GWK								DD42409	5.00	0.007			
782.0		F	BED	GY	BL2	CMT								DD42410	5.00	0.006			
787.0		F	BED	GY	BL2	GWK								DD42411	5.00	0.003			
792.0		F	BED	GY	BL2	GWK								DD42412	5.00	0.013			
797.0		F	BED	GY	BL2	GWK								DD42413	5.00	0.004			
802.0		F	BED	GY	BL2	GWK								DD42414	5.00	0.004			
807.0		F	BED	GY	BL2	GWK								DD42415	5.00	0.005			
812.0		F	CLA	GG	BL3	MCGL								DD42416	5.00	0.030		PO BLEBS + BLOBS	

Royal Oak Mines Inc. - Pamour Mine - DIAMOND DRILL CORE LOG

Page 5 of 5

Project: AK ZONE - SURFACE

Section:

Logged By: L. WONG

Logged Date: 10/19/95

DRILL HOLE: 16515

North: 15961.0

East: 21238.0

Elev: 10968.0

Len: 850.0

OBI:

OBE:

INC:

Lease:

DIST	AZIM	DIP	DIST	AZIM	DIP	DIST	AZIM	DIP	DIST	AZIM	DIP	DIST	AZIM	DIP	DIST	AZIM	DIP
200.0	174	70	0.0	0	0	0.0	0	0	0.0	0	0	0.0	0	0	0.0	0	0
400.0	171	68	0.0	0	0	0.0	0	0	0.0	0	0	0.0	0	0	0.0	0	0
600.0	167	65	0.0	0	0	0.0	0	0	0.0	0	0	0.0	0	0	0.0	0	0
800.0	167	65	0.0	0	0	0.0	0	0	0.0	0	0	0.0	0	0	0.0	0	0

DIST	ROCK DESCRIPTION						STRUCTURE				MINERALS				VG	SAMPLE#	WIDTH	ASSAY	#	COMMENTS
	COM	GRS	TEXT	CO	ALT	NAME	B	A1	J	A2	QZ		PY							
817.0	S	F	CLA	GG	BL3	MCGL		0	0	8			5		DD42417	5.00	0.056		TR,CP LINE 812-850 CLA = CLAS TR OF SPH , VG IN QV VEINLETS + FLOOD OVER 1	
822.0	S	F	CLA	GG	BL3	CGL		0	0	1			10		DD42418	5.00	0.075			
827.0	S	F	CLA	GG	BL3	CGL		0	0	2			3		DD42419	5.00	0.356			
832.0	S	F	CLA	GG	BL3	CGL		0	0	2			5		DD42420	5.00	0.208			
837.0	S	F	CLA	GG	BL3	CGL		0	0	2			3		DD42421	5.00	0.232			
842.0	S	F	CLA	GG	BL3	CGL		0	0	1			2		DD42422	5.00	0.033			
847.0	S	F	CLA	GG	BL3	CGL		0	0	1	TR		1		DD42423	5.00	0.048			
850.0	S	F	CLA	GG	BL3	MCGL		0	0	0			1	TR	DD42424	3.00	0.008			

Date Printed: 10/30/95

Royal Oak Mines Inc. - Pamour Mine - DIAMOND DRILL CORE LOG

Project: AK ZONE - SURFACE

Section: 240E

Logged By: L. Wong

Logged Date: 10/19/95

DRILL HOLE: 16516

North: 15818.0

East: 21283.0

Elev: 10961.0

Len: 600.0

OBI:

OBE:

INC:

Lease:

DIST	AZIM	DIP	DIST	AZIM	DIP	DIST	AZIM	DIP	DIST	AZIM	DIP	DIST	AZIM	DIP	DIST	AZIM	DIP
200.0	163	69	0.0	0	0	0.0	0	0	0.0	0	0	0.0	0	0	0.0	0	0
400.0	163	68	0.0	0	0	0.0	0	0	0.0	0	0	0.0	0	0	0.0	0	0
600.0	159	62	0.0	0	0	0.0	0	0	0.0	0	0	0.0	0	0	0.0	0	0
0.0	0	0	0.0	0	0	0.0	0	0	0.0	0	0	0.0	0	0	0.0	0	0

DIST	ROCK DESCRIPTION						STRUCTURE		MINERALS				VG	SAMPLE#	WIDTH	ASSAY	#	COMMENTS
	COM	GRS	TEXT	CO	ALT	NAME	B	A1	J	A2	QZ	PY						
9.8	*	*	*	*	OVB		0		0						9.80	0.000		
15.0	S	F	PIL	GN	BL2	FG	0		0					DD42437	5.20	0.005		
20.0	S	F	PIL	GN	BL2	FG	0		0					DD42438	5.00	0.004		
25.0	S	F	PIL	GN	BL2	FG	0		0					DD42439	5.00	0.003		
30.0	S	F	PIL	GN	BL2	FG	0		0					DD42440	5.00	0.006		
35.0	S	F	PIL	GN	BL2	FG	0		0					DD42441	5.00	0.003		
40.0	S	F	PIL	GN	BL2	FG	0		0					DD42442	5.00	0.003		
45.0	S	F	PIL	GN	BL2	FG	0		0					DD42443	5.00	0.002		
50.0	S	F	PIL	GN	BL2	FG	0		0					DD42444	5.00	0.002		
55.0	S	F	PIL	GN	BL2	FG	0		0					DD42445	5.00	0.002		
60.0	S	F	PIL	GN	BL2	FG	0		0					DD42446	5.00	0.003		
65.0	S	F	PIL	GN	BL2	FG	0		0					DD42447	5.00	0.004		
70.0	S	F	PIL	GN	BL2	FG	0		0	1				DD42448	5.00	0.005		.5" WH QV @ 50
75.0	S	F	PIL	GN	BL2	FG	0		0	1		TR		DD42449	5.00	0.003		
80.0	S	F	PIL	GN	BL2	FG	0		0					DD42450	5.00	0.005		
85.0	S	F	PIL	GN	BL2	FG	0		0					DD42451	5.00	0.005		
90.0	S	F	PIL	GN	BL2	FG	0		0					DD42452	5.00	0.005		
95.0	S	F	PIL	GN	BL2	FG	0		0					DD42453	5.00	0.005		
100.0	S	F	PIL	GN	BL2	FG	0		0					DD42454	5.00	0.002		
105.0	S	F	PIL	GN	BL2	FG	0		0					DD42455	5.00	0.001		
110.0	S	F	PIL	GN	BL2	FG	0		0					DD42456	5.00	0.005		
115.0	S	F	PIL	GN	BL2	FG	0		0					DD42457	5.00	0.004		
120.0	S	F	PIL	GN	BL2	FG	0		0					DD42458	5.00	0.004		
125.0	S	F	PIL	GN	BL2	FG	0		0					DD42459	5.00	0.003		
130.0	S	F	PIL	GN	BL2	FG	0		0	1		TR		DD42460	5.00	0.004		3" QV @ 70 CAX
135.0	S	F	PIL	GN	BL2	FG	0		0					DD42461	5.00	0.001		
140.0	S	F	PIL	GN	BL2	FG	0		0	1		TR		DD42462	5.00	0.003		
145.0	S	F	PIL	GN	BL2	FG	0		0	1		TR		DD42463	5.00	0.004		
150.0	S	F	PIL	GN	BL2	FG	0		0	1		TR		DD42464	5.00	0.004		
155.0	S	F	PIL	GN	BL2	FG	0		0	1		TR		DD42465	5.00	0.004		
160.0	S	F	PIL	GN	BL2	FG	0		0	1		TR	TR	DD70754	5.00	0.002		
165.0	S	F	PIL	GN	BL2	FG	0		0					DD70755	5.00	0.006		
170.0	S	F	PIL	GN	BL2	FG	0		0					DD70756	5.00	0.006		
175.0	S	F	PIL	GN	BL2	FG	0		0					DD70757	5.00	0.003		
180.0	S	F	PIL	GN	BL2	FG	0		0					DD70758	5.00	0.001		
185.0	S	F	PIL	GN	BL2	FG	0		0					DD70759	5.00	0.005		
190.0	S	F	PIL	GN	BL2	FG	0		0					DD70760	5.00	0.007		
195.0	S	F	PIL	GN	BL2	FG	0		0					DD70761	5.00	0.007		

CLAIM No: P 7673

Core Size: BA

Date Drilled: Oct. 1995

Drill Contractor: M<sup>o</sup>Kenzie Drilling Ltd.

Core Storage: N.A. - Core Whole Sampled.

Royal Oak Mines Inc. - Pamour Mine - DIAMOND DRILL CORE LOG

Page 2 of 4

Project: AK ZONE - SURFACE

Section: 240E

Logged By: L. Wong

Logged Date: 10/19/95

DRILL HOLE: 16516

North: 15818.0

East: 21283.0

Elev: 10961.0

Len: 600.0

OBI:

OBE:

INC:

Lease:

DIST	AZIM	DIP	DIST	AZIM	DIP	DIST	AZIM	DIP	DIST	AZIM	DIP	DIST	AZIM	DIP	DIST	AZIM	DIP
200.0	163	69	0.0	0	0	0.0	0	0	0.0	0	0	0.0	0	0	0.0	0	0
400.0	163	68	0.0	0	0	0.0	0	0	0.0	0	0	0.0	0	0	0.0	0	0
600.0	159	62	0.0	0	0	0.0	0	0	0.0	0	0	0.0	0	0	0.0	0	0
0.0	0	0	0.0	0	0	0.0	0	0	0.0	0	0	0.0	0	0	0.0	0	0

DIST	ROCK DESCRIPTION						STRUCTURE		MINERALS				VG	SAMPLE#	WIDTH	ASSAY	#	COMMENTS				
	COM	GRS	TEXT	CO	ALT	NAME	B	A1	J	A2	QZ	PY							PO	GANG	METALLIC	
200.0	S	F	PIL	GN	BL2	FG	0		0									DD70762	5.00	0.003		
205.0	S	F	PIL	GN	BL2	FG	0		0									DD70763	5.00	0.010		
210.0	S	F	PIL	GN	BL2	FG	0		0									DD70764	5.00	0.010		
215.0	S	F	PIL	GN	BL2	FG	0		0									DD70765	5.00	0.007		
220.0	S	F	PIL	GN	BL2	FG	0		0									DD70766	5.00	0.006		
225.0	S	F	PIL	GN	BL2	FG	0		0									DD70767	5.00	0.001		
230.0	S	F	PIL	GN	BL2	FG	0		0									DD70768	5.00	0.003		
235.0	S	F	PIL	GN	BL2	FG	0		0									DD70769	5.00	0.004		
240.0	S	F	PIL	GN	BL2	FG	0		0					TR				DD70770	5.00	0.003		
245.0	S	F	PIL	GN	BL2	FG	0		0					TR				DD70771	5.00	0.010		
250.0	S	F	PIL	GN	BL2	FG	0		0					1				DD70772	5.00	0.006		
255.0	S	F	PIL	GN	BL2	FG	0		0					1				DD70773	5.00	0.0055		
260.0	S	F	PIL	GN	BL2	FG	0		0					1				DD70774	5.00	0.009		
265.0	S	F	PIL	GN	BL2	FG	0		0					TR				DD70775	5.00	0.002		
270.0	S	F	PIL	GN	BL2	FG	0		0					1				DD70776	5.00	0.010		
275.0	S	F	PIL	GN	BL2	FG	0		0					2				DD70777	5.00	0.007		6" QZ FLOOD
280.0	S	F	PIL	GN	BL2	FG	0		0					1			TR	DD70778	5.00	0.002		
285.0	S	F	PIL	GN	BL2	FG	0		0					1				DD70779	5.00	0.003		
290.0	S	F	PIL	GN	BL2	FG	0		0					0				DD70780	5.00	0.008		
295.0	S	F	PIL	GN	BL2	FG	0		0					0				DD70781	5.00	0.008		
300.0	S	F	PIL	GN	BL2	FG	0		0					0				DD70782	5.00	0.004		
305.0	S	F	PIL	GN	BL2	FG	0		0					0				DD70783	5.00	0.003		
310.0	S	F	PIL	GN	BL2	FG	0		0					0				DD70784	5.00	0.004		
315.0	S	F	PIL	GN	BL2	FG	0		0					0				DD70785	5.00	0.004		
320.0	S	F	PIL	GN	BL2	FG	0		0					0				DD70786	5.00	0.005		
325.0	S	F	PIL	GN	BL2	FG	0		0					0				DD70787	5.00	0.003		
330.0	S	F	PIL	GN	BL2	FG	0		0					0				DD70788	5.00	0.006		
335.0	S	F	PIL	GN	BL2	FG	0		0					0				DD70789	5.00	0.009		
340.0	S	F	PIL	GN	BL2	FG	0		0					0				DD70790	5.00	0.003		
345.0	S	F	PIL	GN	BL2	FG	0		0					0				DD70791	5.00	0.006		
350.0	S	F	PIL	GN	BL2	FG	0		0					0				DD70792	5.00	0.002		
355.0	S	F	PIL	GN	BL2	FG	0		0					0				DD70793	5.00	0.003		
360.0	S	F	PIL	GN	BL2	FG	0		0					0				DD70794	5.00	0.005		
365.0	S	F	PIL	GN	BL2	FG	0		0					0				DD70795	5.00	0.003		
370.0	S	F	PIL	GN	BL2	FG	0		0					0				DD70796	5.00	0.009		
375.0	S	F	PIL	GN	BL2	FG	0		0					0				DD70797	5.00	0.008		
380.0	S	F	PIL	GN	BL2	FG	0		0					0				DD70798	5.00	0.004		
385.0	S	F	PIL	GN	BL2	FG	0		0					0				DD70799	5.00	0.012		
390.0	S	F	PIL	GN	BL2	FG	0		0					0				DD70800	5.00	0.005		

## Royal Oak Mines Inc. - Pamour Mine - DIAMOND DRILL CORE LOG

Page 3 of 4

Project: AK ZONE - SURFACE

Section: 240E

Logged By: L. Wong

Logged Date: 10/19/95

DRILL HOLE: 16516

North: 15818.0

East: 21283.0

Elev: 10961.0

Len: 600.0

OBI:

OBE:

INC:

Lease:

DIST	AZIM	DIP	DIST	AZIM	DIP	DIST	AZIM	DIP	DIST	AZIM	DIP	DIST	AZIM	DIP	DIST	AZIM	DIP
200.0	163	69	0.0	0	0	0.0	0	0	0.0	0	0	0.0	0	0	0.0	0	0
400.0	163	68	0.0	0	0	0.0	0	0	0.0	0	0	0.0	0	0	0.0	0	0
600.0	159	62	0.0	0	0	0.0	0	0	0.0	0	0	0.0	0	0	0.0	0	0
0.0	0	0	0.0	0	0	0.0	0	0	0.0	0	0	0.0	0	0	0.0	0	0

DIST	ROCK DESCRIPTION					STRUCTURE		MINERALS				VG	SAMPLE#	WIDTH	ASSAY	#	COMMENTS	
	COM	GRS	TEXT	CO	ALT	NAME	B/S	J/F	GANG	METALLIC								
						B	A1	J	A2	QZ		PY	PO					
395.0	S	F	PIL	GN	BL2	FG		0							DD70801	5.00	0.005	
400.0	S	F	PIL	BN	BL1	FGCC		0		1		1			DD70802	5.00	0.007	
405.0	S	F	PIL	BN	BL1	FGCC		0				1			DD70803	5.00	0.010	
410.0	S	F	PIL	BN	BL1	FGCC		0				1			DD70804	5.00	0.000	
415.0	S	F	PIL	BN	BL1	FGCC		0							DD70805	5.00	0.000	
420.0	S	F	PIL	BN	BL1	FGCC		0							DD70806	5.00	0.012	
425.0	S	F	PIL	BN	BL1	FGCC		0		TR		1	TR		DD70807	5.00	0.008	
430.0	S	F	PIL	BN	BL1	FGCC		0		1		1			DD70808	5.00	0.006	
435.0	S	F	PIL	BN	BL1	FGCC		0							DD70809	5.00	0.000	
440.0	S	F	PIL	BN	BL1	FGCC		0		TR		TR			DD70810	5.00	0.000	
445.0	S	F	PIL	BN	BL1	FGCC		0		TR		1			DD70811	5.00	0.004	
450.0	S	F	PIL	BN	BL1	FGCC		0		TR					DD70812	5.00	0.006	
456.0	S	F	PIL	BN	BL1	FGCC		0		TR					DD70813	6.00	0.004	
461.0	S	F	MSV	GN	CHL	FGCHL		0		1					DD70814	5.00	0.004	TUFFACEOUS CORE WIH CHL ALTERATION
466.0	S	F	MSV	GN	CHL	FGCHL		0		1					DD70815	5.00	0.007	
471.0	S	F	MSV	GN	CHL	FGCHL		0				TR			DD70816	5.00	0.002	
476.0	S	F	MSV	GN	CHL	FGCHL		0		1		TR			DD70817	5.00	0.000	
481.0	S	FM	MSV	GN	ANK	CARB		0		1		TR			DD70818	5.00	0.000	
486.0	S	FM	MSV	GN	ANK	CARB		0		1					DD70819	5.00	0.005	
491.0	S	FM	MSV	GN	ANK	CARB		0		1					DD70820	5.00	0.004	
493.6	S	FM	MSV	GN	ANK	CARB		0				1	TR		DD70821	2.60	0.006	
498.0	S	F	MSV	GN	BL4	FGALT		0		2		2	1	TR	DD70822	4.40	0.109	VG IN 8" QZ FLOOD
503.0	S	F	MSV	GN	BL3	FGALT		0		1		TR		TR	DD70823	5.00	0.000	VG IN FU RICH ZONE .25" WIDE
508.0	S	F	MSV	GN	BL3	FGALT		0		1		TR			DD70824	5.00	0.000	
513.0	S	F	PIL	GN	BL3	FGALT		0		1		TR			DD70825	5.00	0.035	
518.0	S	F	PIL	GN	BL3	FGALT		0		1		1			DD70826	5.00	0.015	
523.0	S	F	PIL	GN	BL3	FGALT		0		1					DD70827	5.00	0.034	
528.0	S	F	PIL	GN	BL3	FGALT		0		1		TR		TR	DD70828	5.00	0.025	VG IN 1 CM QZ BLOB
533.0	S	F	PIL	GN	BL3	FGALT		0		1		TR			DD70829	5.00	0.089	
538.0	S	F	PIL	GN	BL3	FGALT		0		1		TR			DD70830	5.00	0.130	
541.4	S	F	PIL	GN	BL3	FGALT		0		1		2			DD70831	3.40	0.011	
546.0	S	F	BED	GY	BL4	GWK	B	60							DD70832	4.60	0.016	
551.0	S	F	BED	GY	BL4	GWK		0							DD70833	5.00	0.008	
556.0	S	F	BED	GY	BL4	GWK		0							DD70834	5.00	0.006	
561.0	S	F	BED	GY	BL4	GWK		0							DD70835	5.00	0.000	
566.0	S	F	BED	GY	BL4	GWK		0							DD70836	5.00	0.000	
571.0	S	F	BED	GY	BL4	GWK		0		1		TR	1		DD70837	5.00	0.000	
576.0	S	F	BED	GY	BL4	GWK		0		1		TR	TR		DD70838	5.00	0.072	
580.0	S	F	BED	GY	BL3	GWK		0		1		TR	1		DD70839	4.00	0.015	

Royal Oak Mines Inc. - Pamour Mine - DIAMOND DRILL CORE LOG

Page 4 of 4

Project: AK ZONE - SURFACE

Section: 240E

Logged By: L. Wong

Logged Date: 10/19/95

DRILL HOLE: 16516

North: 15818.0

East: 21283.0

Elev: 10961.0

Len: 600.0

OBI:

OBE:

INC:

Lease:

DIST	AZIM	DIP	DIST	AZIM	DIP	DIST	AZIM	DIP	DIST	AZIM	DIP	DIST	AZIM	DIP	DIST	AZIM	DIP
200.0	163	69	0.0	0	0	0.0	0	0	0.0	0	0	0.0	0	0	0.0	0	0
400.0	163	68	0.0	0	0	0.0	0	0	0.0	0	0	0.0	0	0	0.0	0	0
600.0	159	62	0.0	0	0	0.0	0	0	0.0	0	0	0.0	0	0	0.0	0	0
0.0	0	0	0.0	0	0	0.0	0	0	0.0	0	0	0.0	0	0	0.0	0	0

ROCK DESCRIPTION							STRUCTURE				MINERALS											
DIST	COM	GRS	TEXT	CO	ALT	NAME	B	A1	J	A2	QZ		PY	PO	VG	SAMPLE#	WIDTH	ASSAY	#	COMMENTS		
584.0	S	F	BED	GY	BL3	GWK		0		0						DD70840	4.00	0.013				
587.5	S	F	FRAG	GY	BL3	MCGL		0		0	1		TR	3		DD70841	3.50	0.013				
592.0	S	F	FRAG	GY	BL3	CGL		0		0	1		TR	3		DD70842	4.50	0.008				
596.0	S	F	FRAG	GY	BL3	CGL		0		0	TR		2	1	TR	DD70843	4.00	0.450		VG IN QZ FLOOD		
600.0	S	F	FRAG	GY	BL3	CGL		0		0	TR		1	1		DD70844	4.00	0.031				

Date Printed: 11/06/95



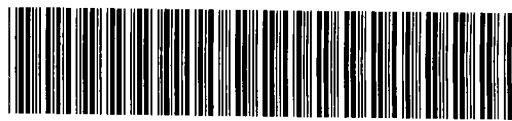


# Report of Work Conducted After Recording Claim

## Mining Act

Transaction Number  
**W9560.00544**

Personal information collected on this form is obtained under the authority of the Access to Information Act. This collection should be directed to the Provincial Manager, Mining Lands, Sudbury, Ontario, P3E 6A5, telephone (705) 670-7264.



42A11SE0090 W9560-00544 WHITNEY

900

- Instructions:**
- Please type or print and submit in duplicate.
  - Refer to the Mining Act and Regulations for further information.
  - A separate copy of this form must be completed for each Work Group.
  - Technical reports and maps must accompany this form in duplicate.
  - A sketch, showing the claims the work is assigned to, must accompany this form.

Recorded Holder(s) <b>ROYAL OAK MINES INC.</b>		Client No. <b>136226</b>
Address <b>P.O. BAG 2010 TIMMINS, ONT P4N 7X7</b>		Telephone No. <b>360-1141</b>
Mining Division <b>PORCUPINE</b>	Township/Area <b>WHITNEY</b>	M or G Plan No. <b>G-3975</b>
Dates Work Performed From: <b>October 5<sup>th</sup> '95</b>		To: <b>December 14<sup>th</sup> '95</b>

**Work Performed (Check One Work Group Only)**

Work Group	Type
<input type="checkbox"/> Geotechnical Survey	
<input checked="" type="checkbox"/> Physical Work, Including Drilling	<b>Diamond Drilling</b>
<input type="checkbox"/> Rehabilitation	
<input type="checkbox"/> Other Authorized Work	
<input type="checkbox"/> Assays	
<input type="checkbox"/> Assignment from Reserve	

**RECORDED**

**DEC 14 1995**

Receipt \_\_\_\_\_

Total Assessment Work Claimed on the Attached Statement of Costs \$ **45,540<sup>00/100</sup>**

**Note:** The Minister may reject for assessment work credit all or part of the assessment work submitted if the recorded holder cannot verify expenditures claimed in the statement of costs within 30 days of a request for verification.

**Persons and Survey Company Who Performed the Work (Give Name and Address of Author of Report)**

Name	Address
<b>Peter Harvey</b>	<b>% Royal Oak Mines Inc - address above</b>
<b>Mackenzie Drilling</b>	<b>P.O. Box 53, Timmins Ont. P4N 7C5</b>

(attach a schedule if necessary)

**Certification of Beneficial Interest \* See Note No. 1 on reverse side**

I certify that at the time the work was performed, the claims covered in this work report were recorded in the current holder's name or held under a beneficial interest by the current recorded holder.	Date <b>Dec 14 '95</b>	Recorded Holder or Agent (Signature) <b>Peter Harvey</b>
--	---------------------------	---

**Certification of Work Report**

I certify that I have a personal knowledge of the facts set forth in this Work report, having performed the work or witnessed same during and/or after its completion and annexed report is true.		
Name and Address of Person Certifying <b>Peter Harvey % Royal Oak Mines Inc - address above</b>		
Telephone No. <b>360-1141</b>	Date <b>Dec 14 '95</b>	Certified By (Signature) <b>Peter Harvey</b>

**For Office Use Only**

\$45,540.	Total Value Cr. Recorded	Date Recorded	Mining Recorder	 <b>10/10</b>
	Deemed Approval Date <b>MARCH 14/98</b>	Date Approved <b>MAR. 14, 1996</b>		
	Date Notice for Amendments Sent			





Ministry of  
Northern Development  
and Mines

Ministère du  
Développement du Nord  
et des mines

**Statement of Costs  
for Assessment Credit**

**État des coûts aux fins  
du crédit d'évaluation**

Transaction No./N° de transaction  
**W9560.00544**

**Mining Act/Loi sur les mines**

Personal information collected on this form is obtained under the authority of the **Mining Act**. This information will be used to maintain a record and ongoing status of the mining claim(s). Questions about this collection should be directed to the Provincial Manager, Minings Lands, Ministry of Northern Development and Mines, 4th Floor, 159 Cedar Street, Sudbury, Ontario P3E 6A5, telephone (705) 670-7264.

Les renseignements personnels contenus dans la présente formule sont recueillis en vertu de la **Loi sur les mines** et serviront à tenir à jour un registre des concessions minières. Adresser toute question sur la collecte de ces renseignements au chef provincial des terrains miniers, ministère du Développement du Nord et des Mines, 159, rue Cedar, 4<sup>e</sup> étage, Sudbury (Ontario) P3E 6A5, téléphone (705) 670-7264.

**1. Direct Costs/Coûts directs**

Type	Description	Amount Montant	Totals Total global
Wages Salaires	Labour Main-d'oeuvre	1,800	
	Field Supervision Supervision sur le terrain		1,800
Contractor's and Consultant's Fees Droits de l'entrepreneur et de l'expert- conseil	Type MacKenzie Drilling	38,140	
	Assays	5,600	
			43,740
Supplies Used Fournitures utilisées	Type		
Equipment Rental Location de matériel	Type		
<b>Total Direct Costs Total des coûts directs</b>			<b>45,540</b>

**2. Indirect Costs/Coûts indirects**

\*\* Note: When claiming Rehabilitation work Indirect costs are not allowable as assessment work.  
Pour le remboursement des travaux de réhabilitation, les coûts indirects ne sont pas admissibles en tant que travaux d'évaluation.

Type	Description	Amount Montant	Totals Total global
Transportation Transport	Type		
Food and Lodging Nourriture et hébergement			
Mobilization and Demobilization Mobilisation et démobilisation			
<b>Sub Total of Indirect Costs Total partiel des coûts indirects</b>			
Amount Allowable (not greater than 20% of Direct Costs) Montant admissible (n'excédant pas 20 % des coûts directs)			
Total Value of Assessment Credit (Total of Direct and Allowable indirect costs)		Valeur totale du crédit d'évaluation (Total des coûts directs et indirects admissibles)	<b>45,540</b>

Note: The recorded holder will be required to verify expenditures claimed in this statement of costs within 30 days of a request for verification. If verification is not made, the Minister may reject for assessment work all or part of the assessment work submitted.

Note : Le titulaire enregistré sera tenu de vérifier les dépenses demandées dans le présent état des coûts dans les 30 jours suivant une demande à cet effet. Si la vérification n'est pas effectuée, le ministre peut rejeter tout ou une partie des travaux d'évaluation présentés.

**Filing Discounts**

1. Work filed within two years of completion is claimed at 100% of the above Total Value of Assessment Credit.
2. Work filed three, four or five years after completion is claimed at 50% of the above Total Value of Assessment Credit. See calculations below:

Total Value of Assessment Credit	Total Assessment Claimed
	× 0.50 =

**Remises pour dépôt**

1. Les travaux déposés dans les deux ans suivant leur achèvement sont remboursés à 100 % de la valeur totale susmentionnée du crédit d'évaluation.
2. Les travaux déposés trois, quatre ou cinq ans après leur achèvement sont remboursés à 50 % de la valeur totale du crédit d'évaluation susmentionné. Voir les calculs ci-dessous.

Valeur totale du crédit d'évaluation	Evaluation totale demandée
	× 0,50 =

**Certification Verifying Statement of Costs**

I hereby certify:  
that the amounts shown are as accurate as possible and these costs were incurred while conducting assessment work on the lands shown on the accompanying Report of Work form.

that as Project Geologist I am authorized  
(Recorded Holder, Agent, Position in Company)

to make this certification

**Attestation de l'état des coûts**

J'atteste par la présente :  
que les montants indiqués sont le plus exact possible et que ces dépenses ont été engagées pour effectuer les travaux d'évaluation sur les terrains indiqués dans la formule de rapport de travail ci-joint.

Et qu'à titre de \_\_\_\_\_ je suis autorisé  
(titulaire enregistré, représentant, poste occupé dans la compagnie)

à faire cette attestation.

Signature Peter Harvey Date Dec. 14 '95

Ministry of  
Northern Development  
and MinesMinistère du  
Développement du Nord  
et des Mines(705) 360-8330  
Fax: 360-2001File: **W9560.00544**

August 8, 1996

Mr. Peter Harvey  
Royal Oak Mines Inc.  
P.O. Bag 2010  
Timmins, ON  
P4N 7X7

Dear Mr. Harvey:

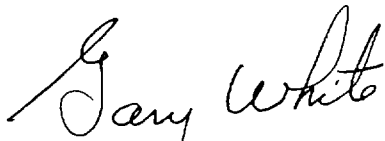
**Subject: APPROVAL OF ASSESSMENT WORK CREDIT ON MINING LAND,  
CLAIM(S) P-7673 (ET AL.) IN WHITNEY TOWNSHIP**

A 45 Day Notification was not issued on this Report of Work prior to the 90 day deemed approval date as outlined in subsection 6(7) of the Assessment Work Regulation. Accordingly, this submission is **deemed approved** as of **March 14, 1996**.

The assessment work credit has been deemed approved under Section 16 (Exploratory Drilling) of the Assessment Work Regulation.

If you have any questions regarding this correspondence, please contact Terry Binkley at (705) 360-8338.

Yours sincerely,

Gary White  
Mining Recorder  
Porcupine Mining Division

TB/

**MAP SYMBOLOLOGY**

Aerial Cableway	Pipeline (above ground)
Boundary (operational)	Railroad Single Track
Boundary (unoperational)	Railroad Double Track
District, Township Indian Reserve	Approach
Approach	Road
Lot, Concession	Highway, County
Approach	Township
Pink Boundary	Access (road of doubtful maintenance or significant driveway)
Bridge	"No. 1" Bank Road (single alley)
Building	"No. 2" Bank Road (double alley)
Chimney	Road
Cliff, Pit, Pile	Double line river with multiple rapids
Contours	Double line river with multiple rapids
Interpretation	Reservoir
Approach	River, Stream, Canal
Depression	Approach (fraction of flow)
Control Points	POCK (vertical)
Horizontal	POCK (horizontal)
Vertical	POCK (spot)
Culvert	Spot Elevation (above elevation) -300
Falls	Spot Elevation (above elevation) -300
Double line river	Transmission Line
Fence, Hedge, Wall	Poles
Feature Outline (Construction features, etc.)	Tunnel
Flooded Land	Utility Poles
Lock	Wharf, Dock, Pier
Marsh or Swamp	Wooded Area
Moat	
Mine Head Frame	
Outcrop	

**AREAS WITHDRAWN FROM DISPOSITION**

M.R.O. - MINING RIGHTS ONLY  
 S.R.O. - SURFACE RIGHTS ONLY  
 M+S - MINING AND SURFACE RIGHTS

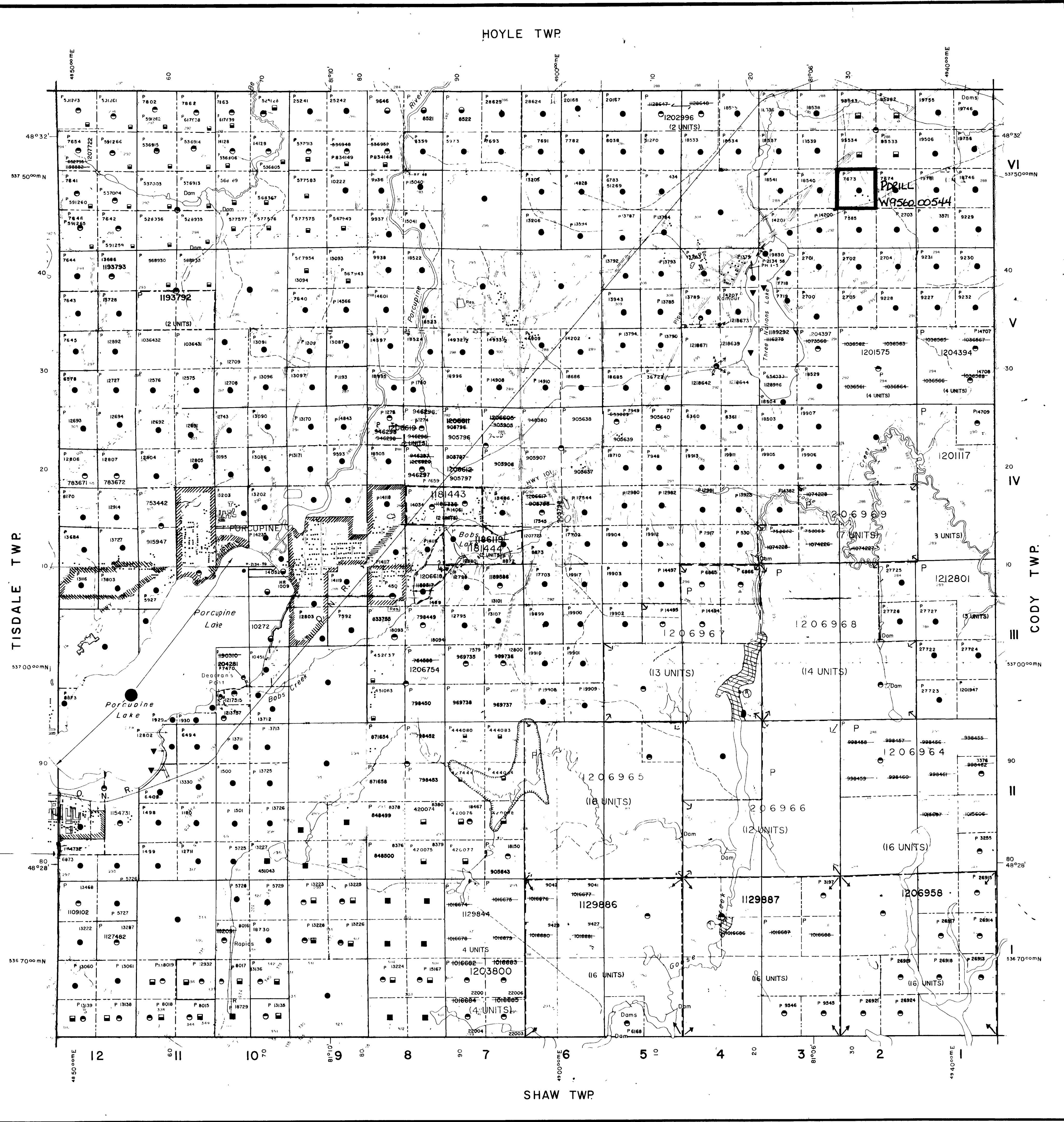
Description	Order No.	Date	Disposition	File
APPLICATION PENDING UNDER PUBLIC LANDS ACT				
SURFACE RIGHTS WITHDRAWN				

THIS TWP IS SUBJECT TO FOREST ACTIVITY IN 1934/35  
 FURTHER INFORMATION AVAILABLE ON FILE

**NOTE:**

BOUNDARY CHANGED SEPT. 23, 1994  
 AS PER G. SHERMAN

THE INFORMATION THAT APPEARS ON THIS MAP HAS BEEN COMPILED FROM VARIOUS SOURCES AND ACCURACY IS NOT GUARANTEED. THOSE WISHING TO STAKE MINING CLAIMS SHOULD CONSULT WITH THE MINING RECORDER, MINISTRY OF NORTHERN DEVELOPMENT AND MINES, FOR ADDITIONAL INFORMATION ON THE STATUS OF THE LANDS SHOWN HEREON.



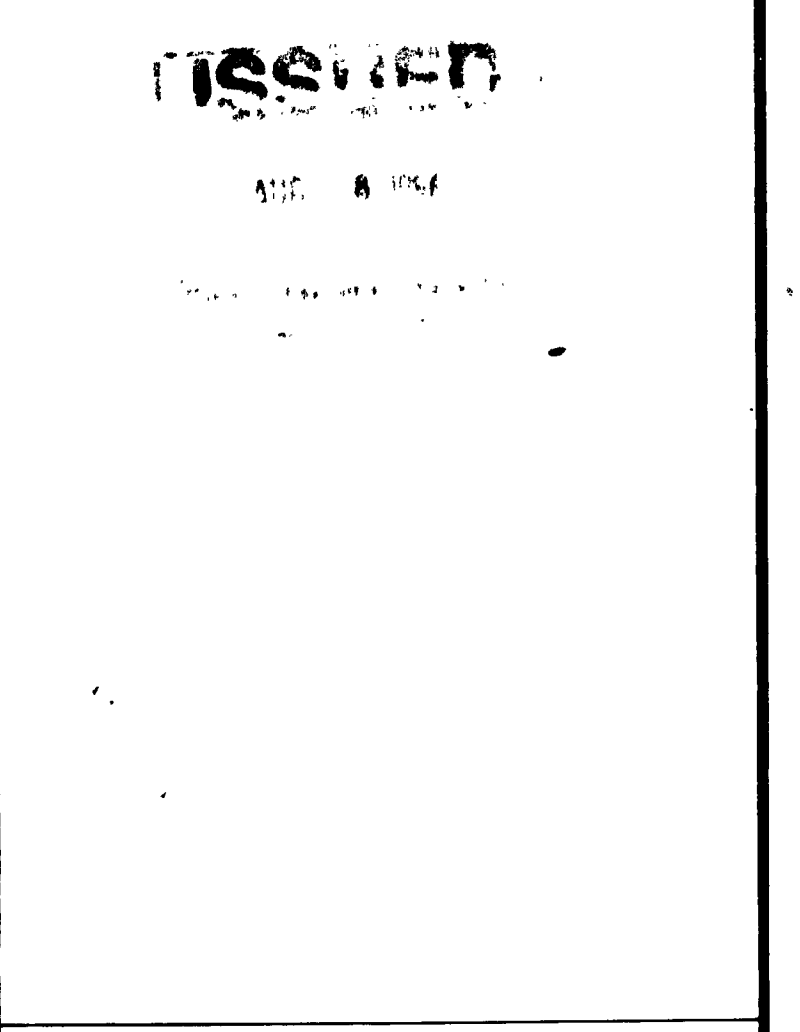
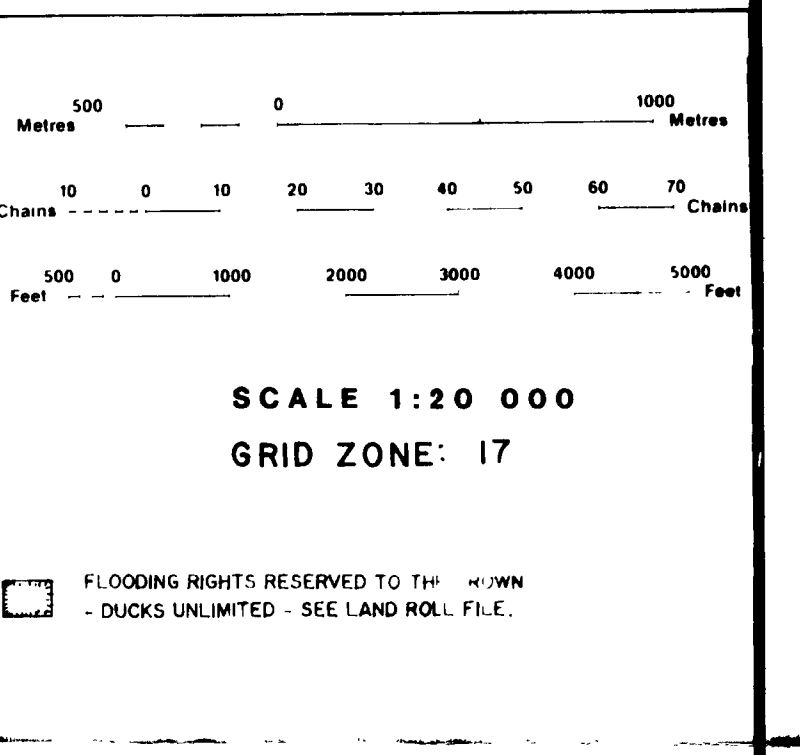
**LEGEND**

HIGHWAY AND ROUTE No	
OTHER ROADS	
TRAILS	
SURVEYED LINES	
TOWNSHIPS, BASE LINES, ETC	
LOTS, MINING CLAIMS, PARCELS, ETC	
UNSURVEYED LINES	
LOT LINES	
PARCEL BOUNDARY	
MINING CLAIMS ETC	
RAILWAY AND RIGHT OF WAY	
UTILITY LINES	
NON-PERENNIAL STREAM	
FLOODING OR FLOODING RIGHTS	
SUBDIVISION OR COMPOSITE PLAN	
RESERVATIONS	
ORIGINAL SHORELINE	
MARSH OR MUSKIE	
MINES	
TRAVERSE MONUMENT	

**DISPOSITION OF CROWN LANDS**

TYPE OF DOCUMENT	SYMBOL
PATENT, SURFACE & MINING RIGHTS	●
SURFACE RIGHTS ONLY	○
MINING RIGHTS ONLY	◐
LEASE, SURFACE & MINING RIGHTS	◑
SURFACE RIGHTS ONLY	◒
MINING RIGHTS ONLY	◓
LICENCE OF OCCUPATION	◔
ORDER-IN-COUNCIL	OC
RESERVATION	OC
CANCELLED	○
SAND & GRAVEL	○

NOTE: MINING RIGHTS IN PARCELS PATENTED PRIOR TO MAY 6, 1912, VESTED IN ORIGINAL PATENTEES BY THE PUBLIC LANDS ACT, R.S.O. 1970, CHAP. 380, SEC. 63, SUBSEC. 1



TOWNSHIP  
**WHITNEY**  
 M.N.R. ADMINISTRATIVE DISTRICT  
**TIMMINS**  
 MINING DIVISION  
**PORCUPINE**  
 LAND TITLES / REGISTRY DIVISION  
**COCHRANE**

Ministry of Natural Resources  
 Land Management Branch

ORIGINAL COMPILATION JULY 1984  
 CHECKED BY:  
 REVISED:  
 ACTIVATED BY: D.C. - JULY 26, 1994

Number: **G-3975**

At 162° 16505

-89°

CASE 0.000  
 0.005  
 0.002  
 TLCCB 0.003  
 0.004  
 0.032  
 FBCHL 0.000  
 0.000  
 TLCCB  
 FB 0.007  
 TLCCB  
 TLCCB  
 FZ  
 FBCHL  
 0.000  
 TLCCB  
 0.003  
 0.004  
 0.011  
 0.010  
 0.014  
 0.005  
 0.004  
 CARB 0.003  
 0.005  
 0.008  
 0.004  
 0.003  
 0.003  
 TLCCB 0.011  
 0.048  
 0.014  
 CARB 0.042  
 0.017  
 0.048  
 0.002  
 FBALT 0.024  
 0.002  
 CARB 0.004  
 FBALT 0.018  
 0.004  
 0.129  
 0.018  
 0.003  
 0.008  
 CARB 0.020  
 0.041  
 0.008  
 0.006  
 0.009  
 0.074  
 0.010  
 0.088  
 0.020  
 0.011  
 0.010  
 0.013  
 0.010  
 0.017  
 FBALT 0.004  
 0.011  
 0.049  
 0.009  
 0.040  
 0.003  
 0.004  
 0.112  
 0.082  
 0.084  
 CARB 0.042  
 0.027  
 0.004  
 FBALT 0.039  
 0.081  
 0.082  
 16506

END 797.0'

CLAIM P 7673

PAMOUR NO. 1/HOYLE PROPERTY LEGEND

NAME	DESCRIPTION
fgalt	Fine grained sericitized basalt
fgcb	Fine grained carbonitized basalt
fgchl	Fine grained chloritized basalt
fg	Fine grained basalt
fgbx	Fine grained brecciated basalt (insitu and all others)
fgcc	Fine grained calcitic basalt
carb	Carbonitized komatiite - coarse grained with porphyroblastic ankerite
talc	Talcose komatiite
talcch	Talcose-carbonitized komatiite
talcch	Talcose-chloritic komatiite
AGL	Agglomerate
CGL	Conglomerate
MCGL	Greywacke bands in conglomerate
GWK	Greywacke 0-10% T
CMT	Greywacke 10-40% T
CT	Greywacke 40-90% T
T	Slate 0-10% GWK
QV	Quartz vein
Fz	Fault zone
LC	Lost core
SHRZ	Shear zone

HOYLE MINE  
AK ZONE  
1995 DRILLING  
SECTION 208E

SCALE 1" = 50.0' FT  
NOV 95 1" = 50'  
ROYAL OAK MINES INC.









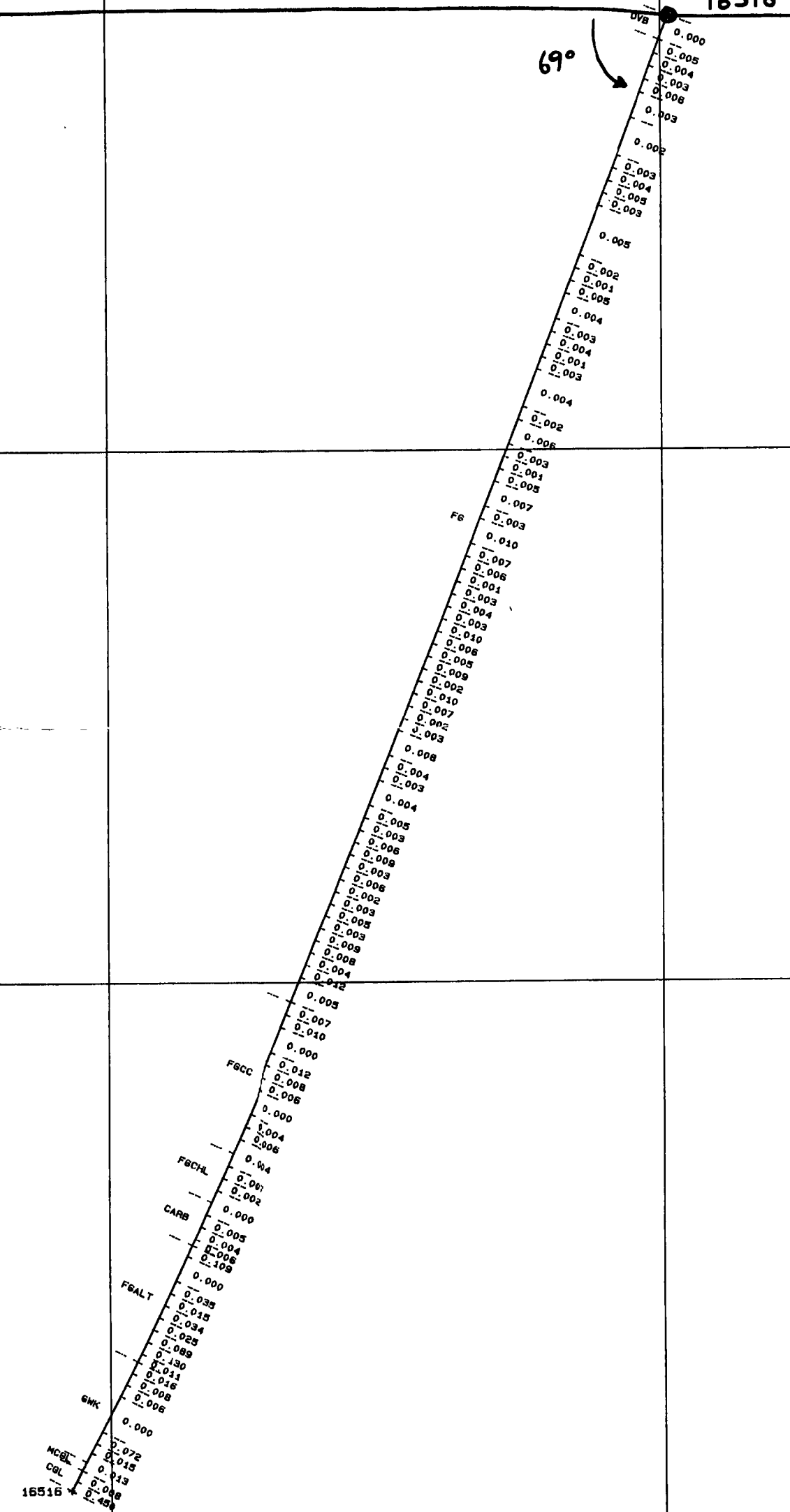


L: 11000

Az 163°  
16516

CLAIM P 7673

END 6000



PAMOUR NO. 1/HOYLE PROPERTY LEGEND

NAME	DESCRIPTION
fgalt	Fine grained sericitized basalt
fgcb	Fine grained carbonitized basalt
fgchl	Fine grained chloritized basalt
fg	Fine grained basalt
fgbx	Fine grained brecciated basalt (insitu and all others)
fgcc	Fine grained calcitic basalt
carb	Carbonitized komatiite - coarse grained with porphyroblastic ankerite
talc	Talcose komatiite
tlccb	Talcose-carbonitized komatiite
tlcch	Talcose-chloritic komatiite
AGL	Agglomerate
CGL	Conglomerate
MCGL	Greywacke bands in conglomerate
GWK	Greywacke 0-10% T
CMT	Greywacke 10-40% T
CT	Greywacke 40-90% T
T	Slate 0-10% GWK
QV	Quartz vein
Fz	Fault zone
LC	Lost core
SHRZ	Shear zone

L: 10400

L: 10200

N. 15800

N. 15800

E. 21200

N. 15800

N. 15200

HOYLE  
AK  
1995 D  
SECTION

NOV 95  
ROYAL OAK



42A11SE0080 W9580-00544 WHITNEY

