



UNDERGROUND EXPLORATION PROGRAM

May - August 1991

1.0 SUMMARY

The long term production at the Bell Creek Mine is dependant on a co-ordinated exploration and development schedule. Exploration work completed during the May - August period focused on the exploration of new zones of mineralization which are being accessed in order to prove grade, continuity and mineability.

2.0 INTRODUCTION

The Bell Creek Mine; located in Hoyle Township 19 kilometres from the centre of Timmins, Ontario, has produced 83,786 ounces of gold from 419,620 tonnes of ore from September 1987 to December 1990.

Average mill throughput since commencement of production has been 346 tonnes per day with an average recovery of 93.7%. Average millhead grade since 1987 has been 6.63 grams gold per tonne from mining of the North "A" Zone, the Marlhill Zone and most recently, the Bell Creek Zone.

Reserves at the Bell Creek Mine as of December 1990 are proven and probable 365,694 grading 6.99 g/t Au and a possible (including pillars) 186,338 tonnes grading 6.87 g/t Au. There are a total of 100 persons employed at the Bell Creek Mine.

3.0 LOCATION AND ACCESS

The Bell Creek Mine is located in Hoyle Township, approximately 19 kilometres northeast of the centre of Timmins, Ontario. The mine is accessible from Highway 101 by an eight kilometre all weather gravel road. A 3,750 kVA, 2,400 volt powerline was constructed to the minesite in 1983-1984 and the mine has its own water supply. The mine's proximity to Timmins, an established gold mining camp for over eighty years, allows for ready access to a skilled labour force and specialized equipment and services to the mining industry.

4.0 GEOLOGY AND ORE RESERVES

The Bell Creek property lies within an Archean volcanic complex of flows, volcanoclastics and intercalated sedimentary rocks. The stratigraphy may be the folded equivalent of the productive Porcupine complex in Tisdale and Whitney Townships. The sequence of rocks on the property is a series of weak to highly carbonated flows, fragmentals and tuffs, striking east-west and dipping steeply to the south.

Structurally the auriferous horizons appear to be a set of shear structures striking slightly north of east and dipping 75 degrees to the south. Gold mineralization is associated with quartz-carbonate veins mineralized with disseminated pyrite, arsenopyrite and pyrrhotite. Visible gold is common. The property hosts several auriferous veins three of which

GEOLOGY AND ORE RESERVES cont'd

(North "A", Marlhill and Bell Creek West) are presently being mined. Ore reserves have been estimated by the mine geological staff and audited by Derry, Michener, Booth and Wahl.

ORE RESERVES

(As of December 31, 1990)

	<u>Tonnes</u>	<u>Grade (grams/tonne)</u>
Proven and Probable	325,694	6.99
Possible	186,338	6.87

A cutoff grade of 5 grams per tonne for undeveloped ore and 4.5 grams per tonne for developed ore was used in calculating reserves. An additional 216,000 tonnes has been placed into a submarginal category due to the use of higher cutoff grades. Future mining of this mineral inventory is dependent upon improved gold prices.

5.0 UNDERGROUND WORK AND TARGETS

Underground exploration activities and related costs claimed in the attached OMIP Grant Application were directed at (3) main target areas namely the North "A" Vein, 180 Hangingwall Zone and Marlhill M-150 area.

North "A" Vein

A ramp designed to access the 300 ML from the shaft station area on the 240 ML was completed early in 1991. This ramp allows access to the projected down-dip extent of the North

UNDERGROUND WORK AND TARGETS cont'd

North "A" Vein cont'd

"A" Vein where it can be mapped, sampled and diamond drilled. Depending on the final results of the work already carried out and planned, the North "A" Vein may make ore at the 300 ML. Exploration drifting was also carried out on the 180 ML to explore the hangingwall zone south of the North "A" Vein and determine it's continuity and grade.

Marlhill M1-50 & 150

Exploration drifting was completed on the projected extension of the M-1 vein structure in order to test it's grade and continuity on strike.

6.0 UNDERGROUND WORK COMPLETED

Underground work completed during the period May 1991 through to August 1991, is tabulated below in chart form.

TARGET	DRIFTING	SLASH	RAMP	DIA.DRILL CUT OUT(S)

MAY				
North "A" Vein	43.93			7.35
180 H.W. Vein	11.2			
M1 - 150	22.7			
JUNE				
North "A" Vein	28.2			
JULY				
North "A" Vein	36.2			
M1 - 150	17.0			

UNDERGROUND WORK COMPLETED cont'd

TARGET	DRIFTING	SLASH	RAMP	DIA.DRILL CUT OUT(S)
AUGUST				
North "A" Vein	45.7	10.39		
	204.93	10.39		7.35

Underground diamond drilling completed during the period of May 1991 to August 1991, is tabulated below in chart form.

LOCATION	HOLE NUMBER	LENGTH (M)
Bell Creek	9139	110.36
	9140	84.75
	9141	96.62
	9142	134.11
	9143	147.83
	9144	526.82
	9145	39.01
	9146	41.76
	9147	45.85
	9148	40.00
	9149	47.84
	9150	10.36
	9151	7.47
	9152	9.30
	9153	9.60

UNDERGROUND WORK COMPLETED cont'd

<u>LOCATION</u>	<u>HOLE NUMBER</u>	<u>LENGTH (M)</u>
Bell Creek	9154	12.80
	9155	11.88
	9156	21.34
	9158	70.73
	9159	66.14
	9161	153.65
	9162	6.40
	9163	6.10
	9164	6.10
	9165	146.60
	9167	6.09
	9168	6.09
	9169	6.09
	9170	6.00
	9171	18.00
	9172	29.96
	9173	30.48
	9174	65.54
	9175	61.28
	9176	36.28
	-----	-----
TOTAL HOLES	35	2119.23

7.0 **CONCLUSION**

The results of the geological mapping and sampling on the various exploration drifts and raises has identified several potential ore blocks on the 300 M level at the Bell Creek Mine.

Diamond drilling directed at the extensions of vein structure has provided enough encouragement to justify further exploration headings.

A handwritten signature in black ink, appearing to read "Randy Roussain". The signature is stylized with large, overlapping loops and a cursive script.

Randy Roussain
Manager of Exploration

RR/cc



300 EAST ONE DRIFT

AUGUST 91
MONTH END

ADVANCE

$$\begin{aligned}
 &= 36.6 + 9.1 \\
 &= 45.7 \text{ m length} \times 2.4 \text{ m W} \times 2.7 \text{ m HT} \\
 &= 296.1 \text{ m}^3 \times 2.8 \text{ t/m}^3 \\
 &= 829 \text{ tonnes ore}
 \end{aligned}$$

SLASH

$$\begin{aligned}
 &= 25.1 \text{ m}^2 \times 2.7 \text{ m HT} \\
 &= 67.6 \text{ m}^3 \times 2.8 \text{ t/m}^3 \\
 &= 189 \text{ tonnes ore}
 \end{aligned}$$

DRAWN	SUBJECT
SCALE	300m LEVEL NORTH A 5600E - 5675
DATE	
CHECKED	
APPROVED	
APPROVED	





300m SOUTH
BRANCH
VEIN

JULY 91
MONTH END

ADVANCE
= 10.7m length x 18m w x 26m l
= 50.1 m³ x 2.8 t/m³
= 140 tonnes ore

SLASH
= 1.6 m² x 2.6 m t t
= 4.2 m³ x 2.8 t/m³
= 12 tonnes ore

DRAWN	1-1	SUBJECT	300m LEVEL ACCESS
SCALE	1:8250		
DATE	MAR 26/91		
CHECKED			
APPROVED			
APPROVED			

CANAMAX
RESOURCES INC.

300m EAST HAULAGE

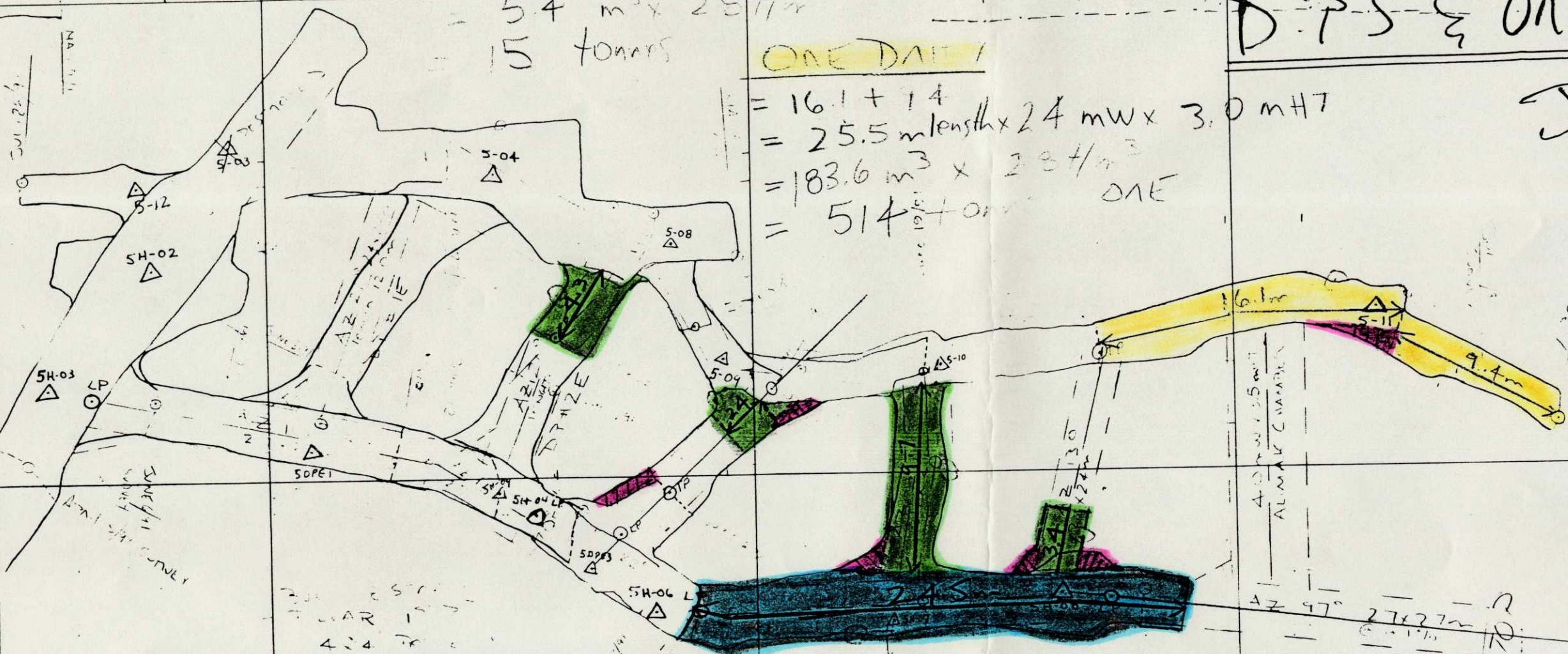
SLASH ONE
 = $1.8 \text{ m}^2 \times 3.0 \text{ m HT}$
 = $5.4 \text{ m}^3 \times 2.8 \text{ t/m}^3$
 = 15 tonnes

ONE DIRT

= $16.1 + 14$
 = $25.5 \text{ m length} \times 2.4 \text{ m W} \times 3.0 \text{ m HT}$
 = $183.6 \text{ m}^3 \times 2.8 \text{ t/m}^3$
 = 514 tonnes ONE

D.P.S & ONE DRIFT

JULY 91
 MONTH
 END



HAULAGE

= $24.5 \text{ m length} \times 3.2 \text{ m W} \times 2.9 \text{ m HT}$
 = $227.4 \text{ m}^3 \times 2.8 \text{ t/m}^3$

1990.0m = 637 tonnes WASTE

D.P.S

= $4.3 + 2.4 + 9.7 + 3.4$
 = $19.8 \text{ m length} \times 2.7 \text{ m W} \times 2.4 \text{ m HT}$
 = $128.3 \text{ m}^3 \times 2.8 \text{ t/m}^3$
 = 359 tonnes WASTE

SLASH DPS

= $7.9 \text{ m}^2 \times 2.4 \text{ m HT}$
 = $19.0 \text{ m}^3 \times 2.8 \text{ t/m}^3$
 = 53 tonnes WASTE

DRAWN	JL
SCALE	1:250
DATE	MAY 27/91
CHECKED	
APPROVED	
APPROVED	

SUBJECT 300m LEVEL NORTH A
 5525E TO 5600E

CANAMAX
 RESOURCES INC.

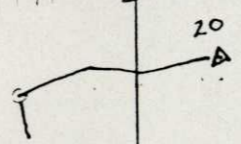
M1-150 Vein Drift

6350 N

5950 E

6000 E

July 91 MONTH-END

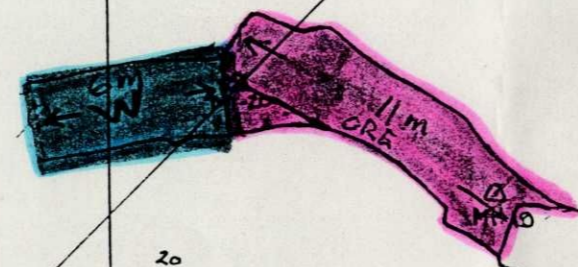


ADVANCE (ORE)

= 11 m length x 2.4 m w x 2.6 m HT
 = 68.64 m³ x 2.8 t/m³
 = 192 tonnes ore

Marshall

2138 m.



6325 N

SLASH (ORE)

- 7.8 m³ x 2.8 t/m³
 = 22 tonnes ore

Total (ORE)

= 214 tonnes
 Marshall

6300 N

ADVANCE (WASTE)

= 6 m length x 2.6 m w x 2.6 m HT
 = 40.56 m³ x 2.8 t/m³
 = 114 tonnes waste

Marshall

2138 m.

DRAWN	C.A.P
SCALE	1:250
DATE	JULY '91
CHECKED	
APPROVED	
APPROVED	

SUBJECT
 M1 150m LEVEL PAGE 4 of 4



5400E

5425E

5450E

300m WEST

5475E

5-07

5-02

1990 mel. 5650W

JUNE 91 MONTH END

WEST HAULAGE/TRAMP

ADVANCE

$$= 2.2 \text{ m length} \times 4.0 \text{ m w} \times 3.7 \text{ m HT}$$

$$= 32.6 \text{ m}^3 \times 2.8 \text{ t/m}^3$$

$$= 91 \text{ tonnes WASTE}$$

ONE DRIFT

$$= 2.2 \text{ m length} \times 2.3 \text{ m w} \times 2.8 \text{ m HT}$$

$$= 14.1 \text{ m}^3 \times 2.8 \text{ t/m}^3$$

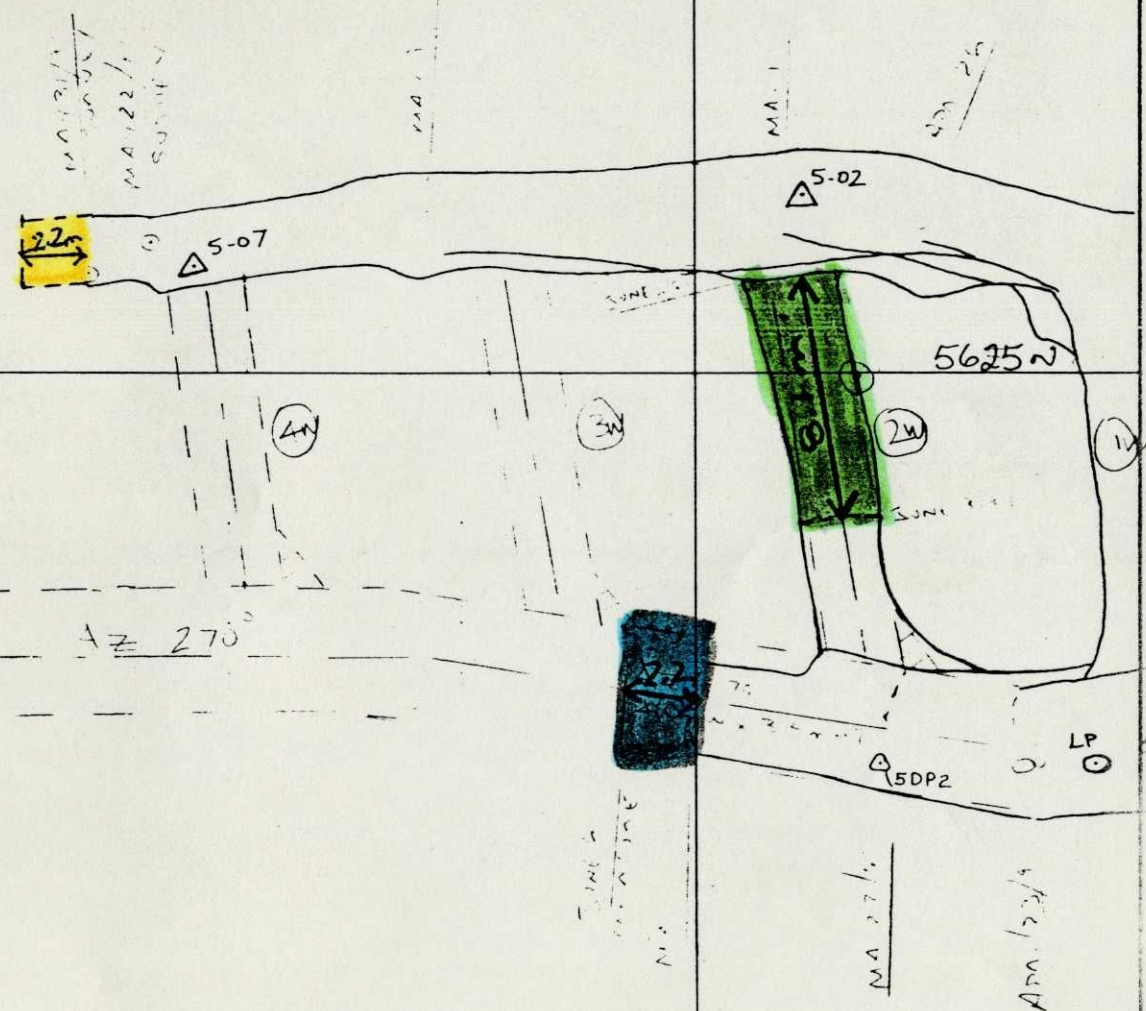
$$= 40 \text{ tonnes ONE}$$

DT #2

$$= 8.1 \text{ m length} \times 2.8 \text{ m w} \times 2.4 \text{ m HT}$$

$$= 54.4 \text{ m}^3 \times 2.8 \text{ t/m}^3$$

$$= 152 \text{ tonnes WASTE}$$



5600N

DRAWN	J.L.
SCALE	1:3250
DATE	MAY 22/91
CHECKED	
APPROVED	
APPROVED	

SUBJECT 300m LEVEL - NORTH A WEST END



300m Level EAST

5625N

JUNE 91
MONTH END

ADVANCE OAD DIFT

$$= 26.0 \text{ m length} \times 2.0 \text{ mW} \times 2.7 \text{ mHT}$$

$$= 140.4 \text{ m}^3 \times 2.8 \text{ t/m}^3$$

$$= 393 \text{ tonnes ONE}$$

ONE DIFT SLASH

$$= 3.9 \text{ m}^2 \times 2.7 \text{ mHT}$$

$$= 10.5 \text{ m}^3 \times 2.8 \text{ t/m}^3$$

$$= 29 \text{ tonnes ONE}$$



SLASH D.P.S

$$= 7.9 \text{ m}^2 \times 2.4 \text{ mHT}$$

$$= 19.0 \text{ m}^3 \times 2.8 \text{ t/m}^3$$

$$= 53 \text{ tonnes WASTE}$$

ADVANCE D.P.S

$$= 12.8 + 6.0 + 7.9$$

$$= 27.5 \text{ m length} \times 3.1 \text{ mW} \times 2.4 \text{ mHT}$$

$$= 204.6 \text{ m}^3 \times 2.8 \text{ t/m}^3$$

$$= 573 \text{ tonnes WASTE}$$

ADVANCE HAULAGE

$$= 33.0 \text{ m length} \times 2.8 \text{ mW} \times 2.8 \text{ mHT}$$

$$= 258.7 \text{ m}^3 \times 2.8 \text{ t/m}^3$$

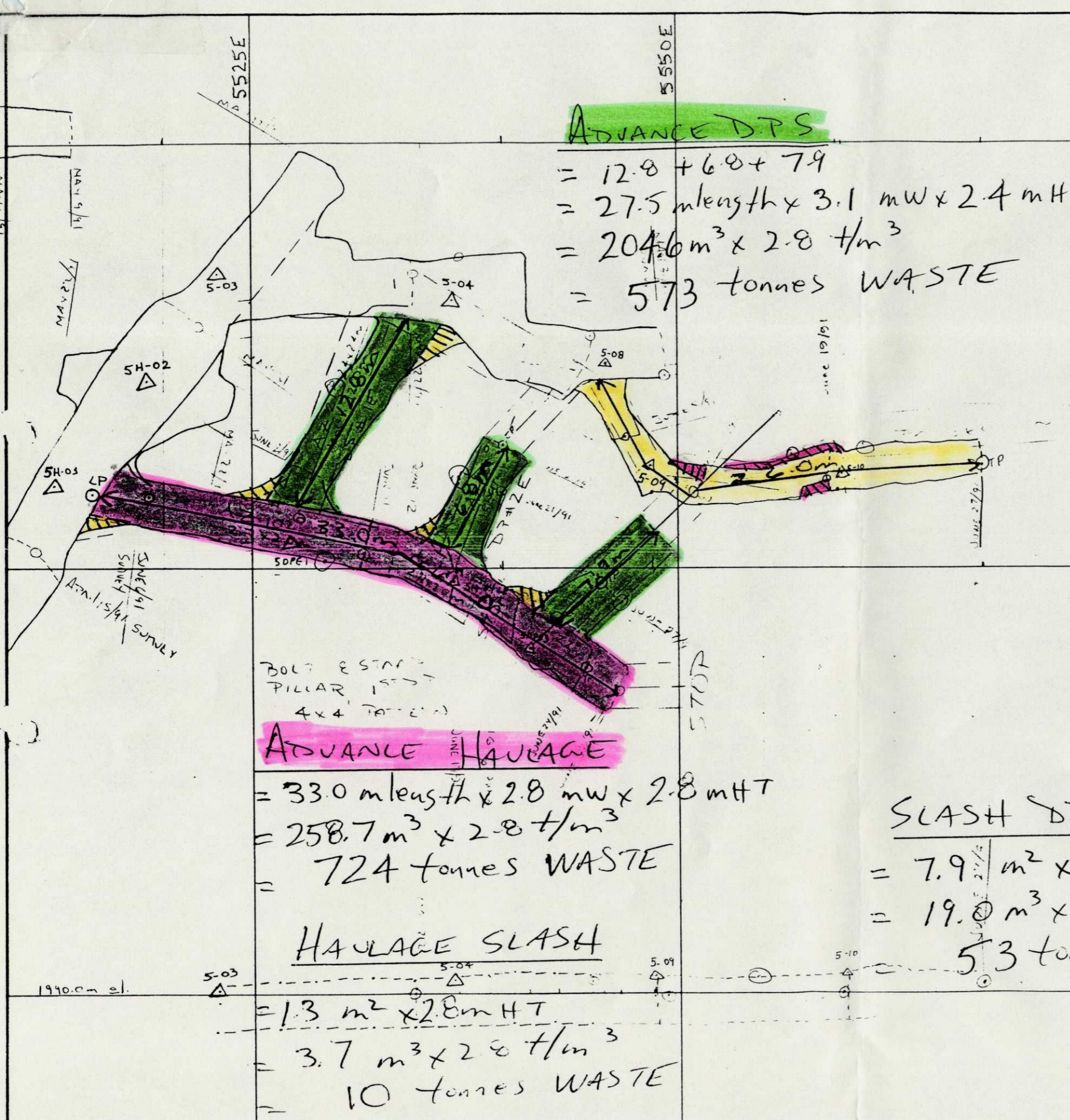
$$= 724 \text{ tonnes WASTE}$$

HAULAGE SLASH

$$= 1.3 \text{ m}^2 \times 2.8 \text{ mHT}$$

$$= 3.7 \text{ m}^3 \times 2.8 \text{ t/m}^3$$

$$= 10 \text{ tonnes WASTE}$$



DRAWN	J.T.
SCALE	1:250
DATE	MAY 27/91
CHECKED	
APPROVED	
APPROVED	

SUBJECT 300m LEVEL NORTH A
5525E TO 5600E



300 LEVEL

MAY 91 - MONTH END
5475E

WEST HAULAGE

ADVANCE

= 110m length x 3.3m w x 3.6m HT
 = 130.7 m³ x 2.8 t/m³
 = 366 tonnes WASTE

SLASH ONE

= 0.9 m² x 3.6m HT
 = 24.8 m³ x 2.8 t/m³
 = 69 tonnes ONE

SLASH WASTE

= 35 m² x 3.6m HT
 = 126 m³ x 2.8 t/m³
 = 35 tonnes WASTE

EAST HAULAGE

ADVANCE

= 2.1 x 2.4
 = 4.5m length x 2.7m w x 2.7m HT
 = 32.9 m³ x 2.8 t/m³
 = 92 tonnes WASTE

SLASH

= 4.7m² x 2.7m HT
 = 12.7 m³ x 2.8 t/m³
 = 36 tonnes WASTE
 SECTION A-B

D.P #2

ADVANCE

= 46m length x 2.4m w x 2.4m HT
 = 26.5 m³ x 2.8 t/m³
 = 74 tonnes WASTE

SLASH

= 0.9 m² x 2.4m HT
 = 2.2 m³ x 2.8 t/m³
 = 6 tonnes WASTE

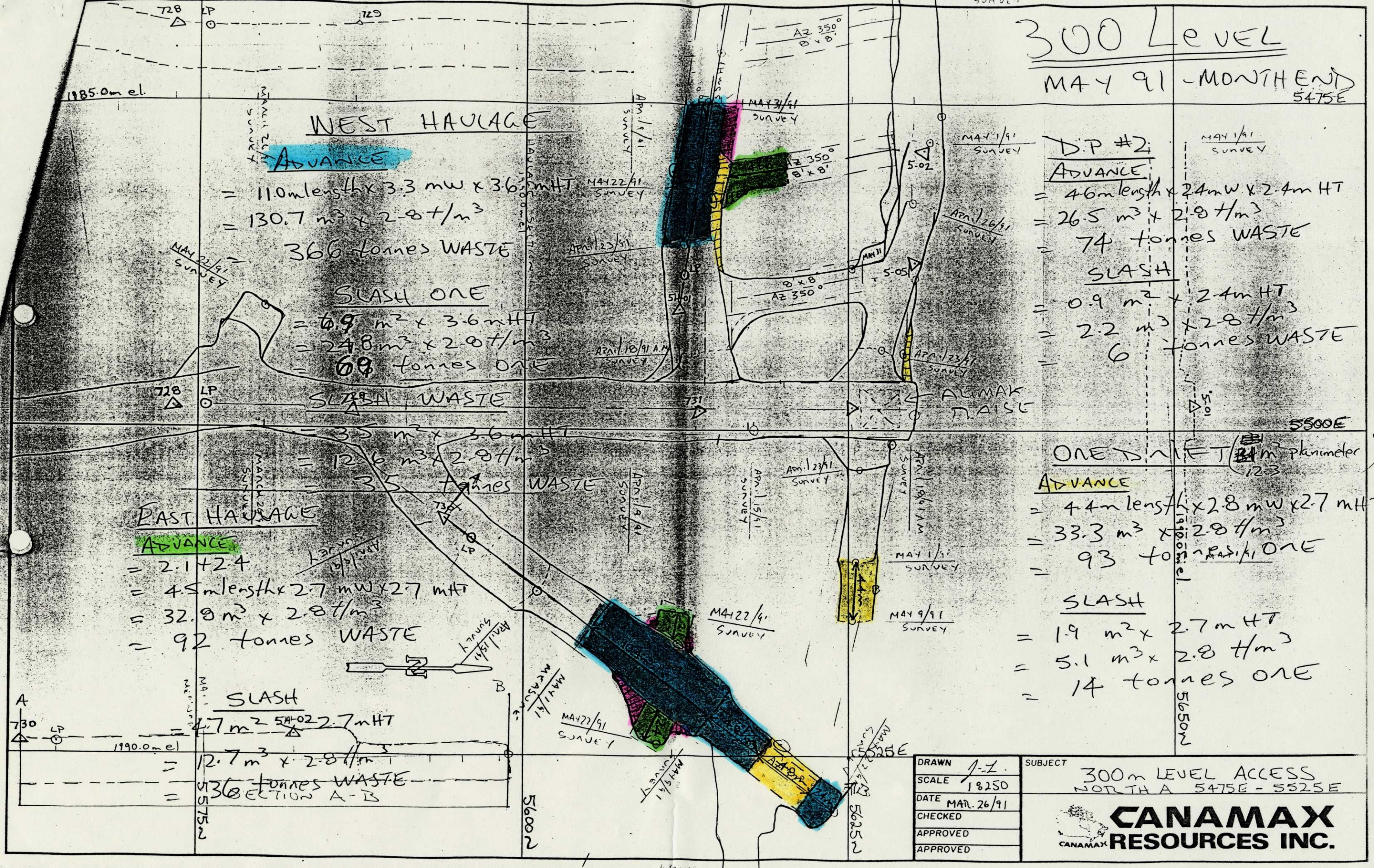
ONE TO ONE (12.3m perimeter)

ADVANCE

= 4.4m length x 2.8m w x 2.7m HT
 = 33.3 m³ x 2.8 t/m³
 = 93 tonnes ONE

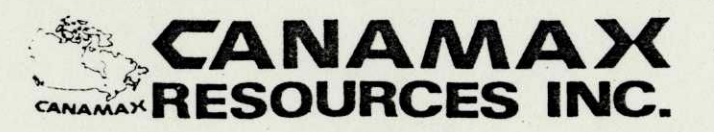
SLASH

= 1.9 m² x 2.7m HT
 = 5.1 m³ x 2.8 t/m³
 = 14 tonnes ONE



DRAWN	1-1
SCALE	1:250
DATE	MAR. 26/91
CHECKED	
APPROVED	
APPROVED	

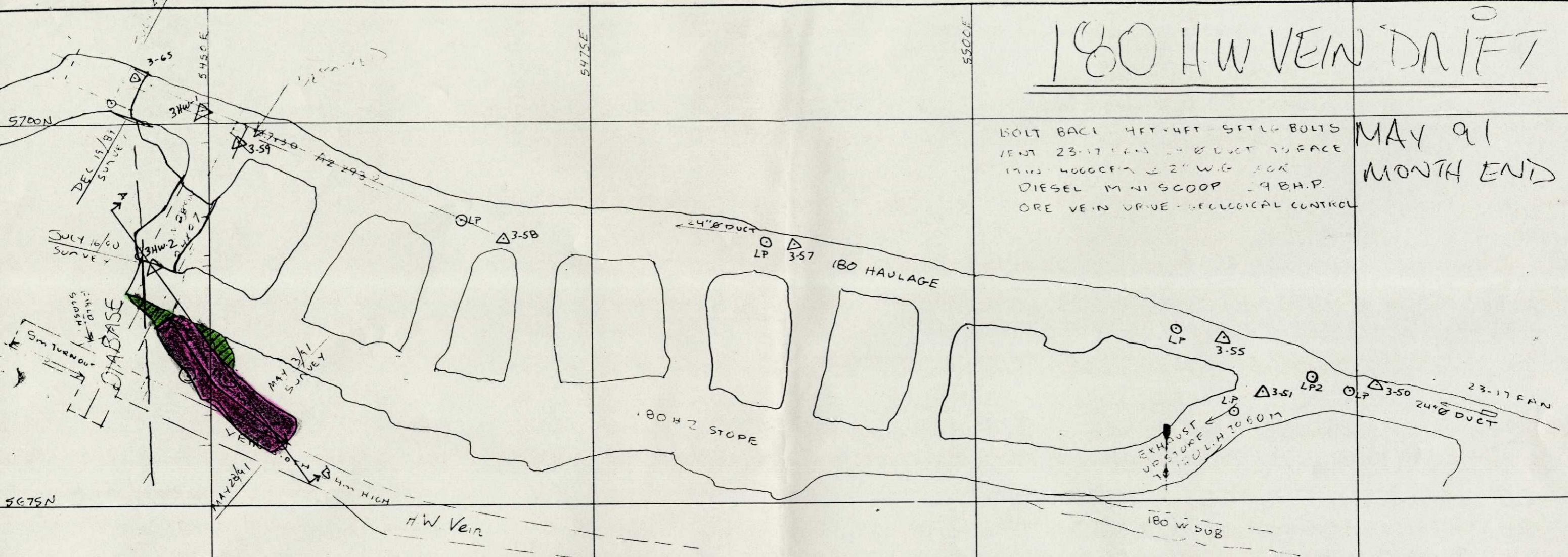
SUBJECT
 300m LEVEL ACCESS
 NORTH A 5475E - 5525E



180 H.W. VEIN DRIFT

MAY 91
MONTH END

150T BACL 4FT x 4FT - 5FT LG BOLTS
1FNT 23-17 FAN 24" Ø DUCT TO FACE
17113 4000CFM @ 2" W.G. FOR
DIESEL MINI SCOOP 29 B.H.P.
ORE VEIN DRIVE - GEOLOGICAL CONTROL



ADVANCE

= 11.2 m length x 2.7 m w x 2.8 m HT
 = 84.7 m³ x 2.8 t/m³
 = 237 tonnes WASTE

SLASH

= 45 m² x 2.8 m HT
 = 12.6 m³ x 2.8 t/m³
 = 35 tonnes WASTE

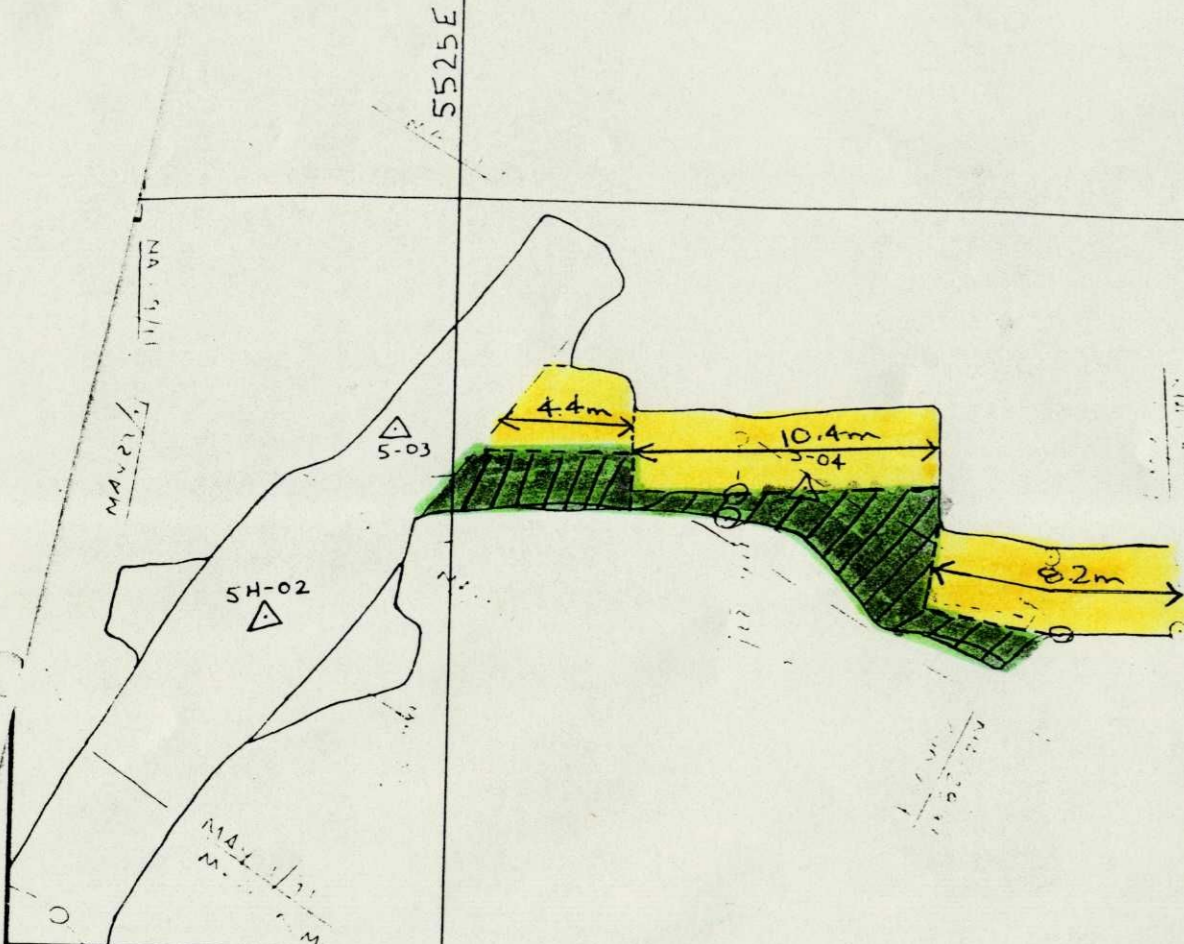
DRAWN	JH
SCALE	1:250
DATE	JUNE 70
CHECKED	S
APPROVED	[Signature]
APPROVED	[Signature]

SUBJECT: 180 H.W. VEIN DRIFT

CANAMAX
RESOURCES INC.

5650N

A ↑



300m EAST ONE

MAY 91
MONTH END

ADVANCE (60.1 m² planimeter)

= 4.4 + 10.4 + 8.2
 = 23.0 m length x 2.6 mW x 2.9 mHT
 = 173.4 m³ x 2.8 t/m³
 = 486 tonnes ONE

EAST ACCESS SMALL
ADVANCE ONE

= 4.8 m length x 3.4 mW x 2.9 mHT
 = 47.3 m³ x 2.8 t/m³
 = 133 tonnes ONE

SLASH

= 36.6 m² x 2.9 mHT
 = 106.1 m³ x 2.8 t/m³
 = 297 tonnes ONE

EAST ACCESS SMALL

ADVANCE WASTE
 = 4.8 + 2.4
 = 7.2 m length x 3.4 mW x 2.9 mHT
 = 71.0 m³ x 2.8 t/m³
 = 199 tonnes WASTE

EAST ACCESS LARGE
(previous page)

ADVANCE
 = 10.4 m length x 5.2 mW x 3.7 mHT
 = 200.0 m³ x 2.8 t/m³
 = 560 tonnes WASTE



DRAWN	J.L.
SCALE	1:250
DATE	MAY 27 91
CHECKED	
APPROVED	
APPROVED	

SUBJECT 300m LEVEL NORTH A
5525E TO 5600E



5400E

5425E

5450E

(61.3 m² development planimeter)

300 LEVEL

5.07

5475E

5.02

1990 mel. 5650N

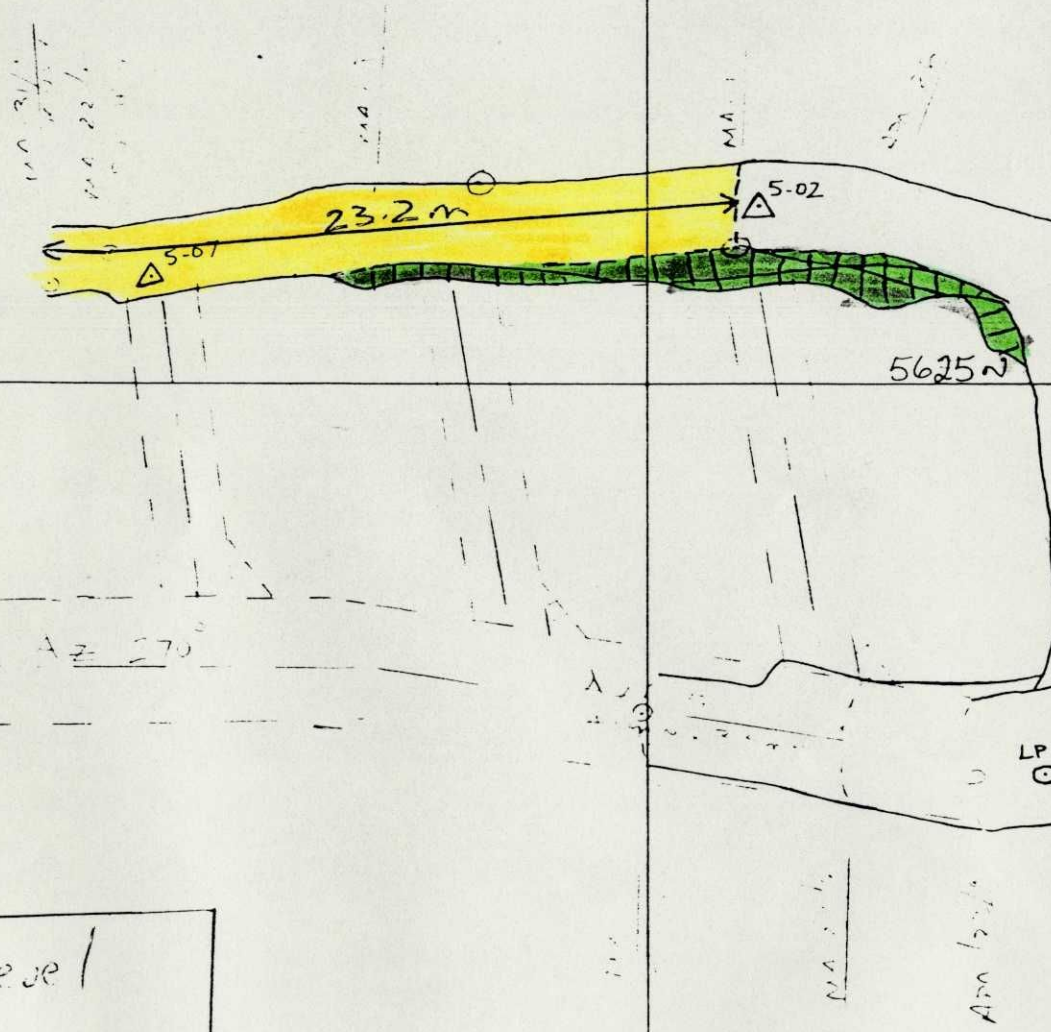
NORTH A VEIN
WEST END
MAY 91 - MONTH END

ADVANCE

$$= 23.2 \text{ m length} \times 2.6 \text{ mW} \times 3.1 \text{ mHT}$$

$$= 187.0 \text{ m}^3 \times 2.8 \text{ t/m}^3$$

$$= 524 \text{ tonnes ORE}$$



SLASH

$$= 23.8 \text{ m}^2 \times 3.1 \text{ mHT}$$

$$= 73.6 \text{ m}^3 \times 2.8 \text{ t/m}^3$$

$$= 206 \text{ tonnes ORE}$$

TOTAL COMBINED ORE DURING 300 m Level	
Total Length	= 50.6 metres
Avg. width	= 2.64 metres
Avg height	= 2.97 metres
TOTAL SLASH	= 184.8 metres ³

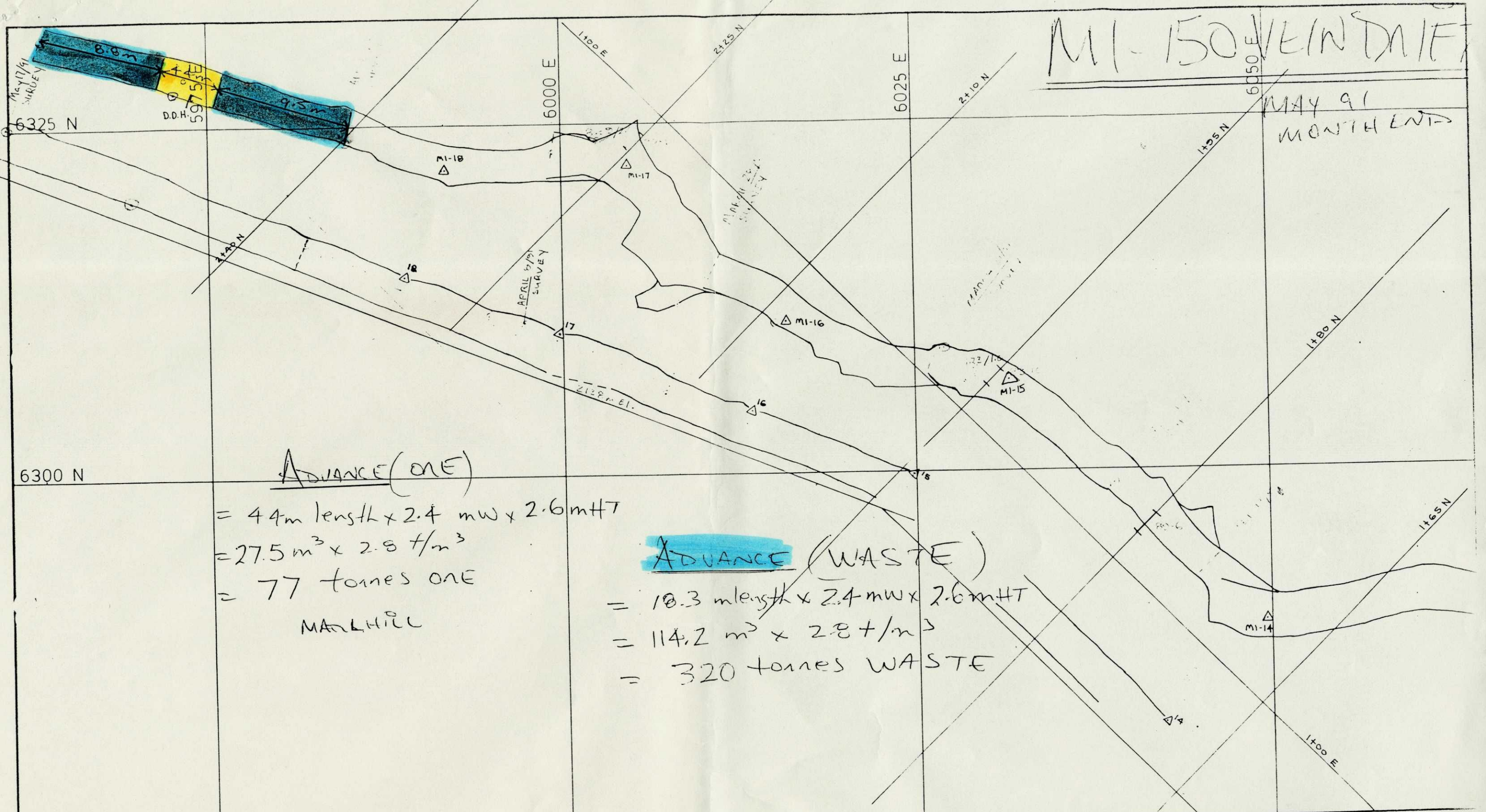
DRAWN AL
 SCALE 1:250
 DATE MAY 22/91
 CHECKED
 APPROVED
 APPROVED

SUBJECT 300m LEVEL - NORTH A WEST END

CANAMAX
RESOURCES INC.

M1-150 VEIN D.I.F.

MAY 91 MONTH END



ADVANCE (ONE)

$= 44m \text{ length} \times 2.4 \text{ mw} \times 2.6 \text{ mHT}$
 $= 27.5 \text{ m}^3 \times 2.8 \text{ t/m}^3$
 $= 77 \text{ tonnes ONE}$
 MARK HILL

ADVANCE (WASTE)

$= 18.3 \text{ m length} \times 2.4 \text{ mw} \times 2.6 \text{ mHT}$
 $= 114.2 \text{ m}^3 \times 2.8 \text{ t/m}^3$
 $= 320 \text{ tonnes WASTE}$

DRAWN
SCALE 1:250
DATE MAR '91
CHECKED
APPROVED
APPROVED

SUBJECT M1 150 m Page 3 of

CANAMAX
RESOURCES INC.

** BORSURV



42A11SE0154 OM91-112 HOYLE

020

SURVEY DATA AND CALCULATIONS

PROPERTY: BELL CREEK
HOLE NO: 9139
Data in metres

DATE: APR 91
SURVEY BY: JL
INSTRUMENT: T1

=====

DEPTH	INCLINATION	BEARING	EASTINGS	NORTHINGS	ELEVATION
0.00	13.50	419.50	5507.480	5560.900	1991.760
60.96	10.00	415.00	5557.675	5593.187	2004.174
110.36	10.00	415.00	5597.527	5621.091	2012.752
110.36	10.00	415.00	5597.527	5621.091	2012.752

SUMMARY LITHO LOG
PROPERTY: BELL CREEK
HOLE No.: 9139

=====

LITHO UNIT	DEPTH	EASTINGS	NORTHINGS	ELEVATION	CORE ANGLE
V7	29.11	5531.45	5576.32	1997.69	0
CB-PY	29.87	5532.08	5576.72	1997.84	0
V7	76.90	5570.53	5602.19	2006.94	0
CB-PY	78.50	5571.83	5603.09	2007.22	0
V7	99.67	5588.90	5615.05	2010.90	0
NORTH A	105.40	5593.53	5618.29	2011.89	0
V7-CB	110.36	5597.53	5621.09	2012.75	0

ASSAY LOG
PROPERTY: BELL CREEK
HOLE No.: 9139

=====

FROM	TO	WIDTH	AU
25.76	26.52	0.76	0.290
29.11	29.87	0.76	0.160
76.90	77.50	0.60	0.040
99.85	100.35	0.50	0.150
100.35	100.85	0.50	4.400
100.85	101.35	0.50	8.090
101.35	101.85	0.50	7.260
101.85	102.15	0.30	34.140
102.15	102.65	0.50	3.260
102.65	103.15	0.50	3.990
103.15	103.65	0.50	3.170
103.65	104.15	0.50	2.380
104.15	104.65	0.50	4.080
104.65	105.15	0.50	3.350
105.15	105.65	0.50	0.140
105.65	106.65	1.00	0.010
109.00	109.20	0.20	2.300

AVERAGED ASSAY INTERVALS
PROPERTY: BELL CREEK
HOLE No: 9139

=====

1. NORTH A (4.30 d.t. Core Angle: 26 1.88 t.t.)

FROM: 100.35	-----	EASTINGS:	5589.45
		NORTHINGS:	5615.44
		ELEVATION:	2011.01
	6.641 AU		
TO: 104.65	-----	EASTINGS:	5592.92
		NORTHINGS:	5617.87
		ELEVATION:	2011.76

** BORSURV **

SURVEY DATA AND CALCULATED CO-ORDINATES

PROPERTY: BELL CREEK
HOLE NO: 9140
Data in metres

DATE: MAY91
SURVEY BY: JL
INSTRUMENT: T1

DEPTH	INCLINATION	BEARING	EASTINGS	NORTHINGS	ELEVATION
0.00	-11.50	411.50	5507.330	5561.070	1991.060
84.75	-11.00	405.00	5569.343	5616.419	1974.526

SUMMARY LITHO LOG
 PROPERTY: BELL CREEK
 HOLE No.: 9140

=====

LITHO UNIT	DEPTH	EASTINGS	NORTHINGS	ELEVATION	CORE ANGLE
V7	46.03	5541.01	5591.13	1982.08	50
QV	49.29	5543.40	5593.26	1981.44	0
V7	62.04	5552.73	5601.59	1978.96	0
NORTH A	63.45	5553.76	5602.51	1978.68	0
QV A	65.12	5554.98	5603.60	1978.36	0
NORTH A	65.27	5555.09	5603.70	1978.33	0
V7	84.75	5569.34	5616.42	1974.53	0

ASSAY LOG
PROPERTY: BELL CREEK
HOLE No.: 9140

FROM	TO	WIDTH	AU
46.03	46.43	0.40	1.710
46.43	46.83	0.40	0.360
46.83	47.23	0.40	0.510
47.23	47.63	0.40	0.720
47.63	48.03	0.40	0.330
48.03	48.43	0.40	4.070
48.43	48.83	0.40	13.510
48.83	49.23	0.40	0.450
59.95	60.95	1.00	NIL
60.95	61.45	0.50	NIL
61.95	62.45	0.50	0.010
62.45	62.95	0.50	0.060
62.95	63.45	0.50	0.330
63.45	63.75	0.30	15.820
63.75	64.05	0.30	1.210
64.05	64.35	0.30	2.750
64.35	64.65	0.30	0.840
64.65	65.15	0.50	0.610
65.15	66.15	1.00	NIL

AVERAGED ASSAY INTERVALS
PROPERTY: BELL CREEK
HOLE No: 9140

=====

1. NORTH A (2.20 d.t. Core Angle: 30 1.10 t.t.)

FROM:	62.95	-----	EASTINGS:	5553.39
			NORTHINGS:	5602.18
			ELEVATION:	1978.78
		3.025 AU		
TO:	65.15	-----	EASTINGS:	5555.00
			NORTHINGS:	5603.62
			ELEVATION:	1978.35

** BORSURV **

SURVEY DATA AND CALCULATED CO-ORDINATES

PROPERTY: BELL CREEK
HOLE NO: 9141
Data in metres

DATE: MAY91
SURVEY BY: JL
INSTRUMENT: T1

=====

DEPTH	INCLINATION	BEARING	EASTINGS	NORTHINGS	ELEVATION
0.00	12.10	344.30	5493.520	5580.600	1988.130
96.62	9.00	342.00	5465.986	5671.509	2005.820

SUMMARY LITHO LOG
 PROPERTY: BELL CREEK
 HOLE No.: 9141

=====

LITHO UNIT	DEPTH	EASTINGS	NORTHINGS	ELEVATION	CORE ANGLE
V7	20.83	5487.58	5600.20	1991.94	0
V7FOL	22.31	5487.16	5601.59	1992.21	60
QV-PY	22.57	5487.09	5601.84	1992.26	60
V7FOL	29.26	5485.18	5608.13	1993.49	0
V7	36.42	5483.14	5614.87	1994.80	0
SHR PY	37.31	5482.89	5615.70	1994.96	0
V7	37.32	5482.88	5615.71	1994.96	0
HWZ A	40.56	5481.96	5618.76	1995.56	62
V7	53.54	5478.26	5630.98	1997.93	0
NORTH A	57.70	5477.08	5634.89	1998.69	0
V7	70.36	5473.47	5646.80	2001.01	0
CB-PY	71.58	5473.12	5647.95	2001.24	60
V7	96.62	5465.99	5671.51	2005.82	0

ASSAY LOG
PROPERTY: BELL CREEK
HOLE No.: 9141

FROM	TO	WIDTH	AU
20.83	22.31	1.48	0.070
22.31	22.57	0.26	1.440
22.57	23.78	1.21	0.340
23.78	24.00	0.22	N.S.
36.42	37.31	0.89	0.270
37.31	37.84	0.53	8.780
37.84	39.00	1.16	2.810
39.00	40.28	1.28	0.480
40.28	40.56	0.28	1.140
53.54	54.54	1.00	7.810
54.54	55.54	1.00	3.500
55.54	56.70	1.16	3.520
56.70	57.18	0.48	2.070
57.18	57.70	0.52	6.790
57.70	58.00	0.30	N.S.
70.36	71.58	1.22	1.580

AVERAGED ASSAY INTERVALS
PROPERTY: BELL CREEK
HOLE No: 9141

=====

1. NORTH A (4.16 d.t. Core Angle: 60 3.60 t.t.)

FROM:	53.54	-----	EASTINGS:	5478.26
			NORTHINGS:	5630.98
			ELEVATION:	1997.93
		4.788 AU		
TO:	57.70	-----	EASTINGS:	5477.08
			NORTHINGS:	5634.89
			ELEVATION:	1998.69

2. HWA (1.69 d.t. Core Angle: 90 1.69 t.t.)

FROM:	37.31	-----	EASTINGS:	5482.89
			NORTHINGS:	5615.70
			ELEVATION:	1994.96
		4.682 AU		
TO:	39.00	-----	EASTINGS:	5482.41
			NORTHINGS:	5617.29
			ELEVATION:	1995.27

** BORSURV **

SURVEY DATA AND CALCULATED CO-ORDINATES

PROPERTY: BELL CREEK
HOLE NO: 9142
Data in metres

DATE:
SURVEY BY:
INSTRUMENT:

=====

DEPTH	INCLINATION	BEARING	EASTINGS	NORTHINGS	ELEVATION
0.00	0.00	304.00	5492.400	5579.000	1988.100
134.11	2.00	312.00	5386.736	5661.554	1990.442

SUMMARY LITHO LOG
 PROPERTY: BELL CREEK
 HOLE No.: 9142

```
=====
```

LITHO UNIT	DEPTH	EASTINGS	NORTHINGS	ELEVATION	CORE ANGLE
V7	31.89	5467.27	5598.63	1988.66	0
QZ-Se	34.96	5464.86	5600.52	1988.71	0
V7cb	47.64	5454.86	5608.33	1988.93	50
3D	85.82	5424.78	5631.83	1989.60	0
V7cb	90.40	5421.17	5634.65	1989.68	0
V7	94.20	5418.18	5636.99	1989.74	0
Quartz Vein-	94.40	5418.02	5637.11	1989.75	60
V7	117.44	5399.87	5651.29	1990.15	60
NORTH "A"	120.13	5397.75	5652.95	1990.20	60
V7	134.11	5386.74	5661.55	1990.44	0

ASSAY LOG
PROPERTY: BELL CREEK
HOLE No.: 9142

FROM	TO	WIDTH	Au ppm
31.89	33.16	1.27	1.440
33.16	34.96	1.80	2.060
94.20	94.40	0.20	2.130
115.29	117.40	2.11	0.210
117.40	118.87	1.47	0.070
118.87	120.13	1.26	TRACE

** BORSURV **

SURVEY DATA AND CALCULATED CO-ORDINATES

PROPERTY: BELL CREEK
HOLE NO: 9143
Data in metres

DATE:
SURVEY BY:
INSTRUMENT:

=====

DEPTH	INCLINATION	BEARING	EASTINGS	NORTHINGS	ELEVATION
0.00	1.00	297.50	5490.600	5580.500	1988.000
147.83	-3.00	309.00	5366.991	5661.542	1985.420

SUMMARY LITHO LOG
 PROPERTY: BELL CREEK
 HOLE No.: 9143

=====

LITHO UNIT	DEPTH	EASTINGS	NORTHINGS	ELEVATION	CORE ANGLE
V7	33.45	5462.63	5598.84	1987.42	0
MIN-CB	39.87	5457.26	5602.36	1987.30	0
V7 gf	43.99	5453.82	5604.62	1987.23	30
3D	77.74	5425.60	5623.12	1986.64	60
V7a	90.14	5415.23	5629.92	1986.43	0
NORTH "A"	106.86	5401.25	5639.08	1986.14	40
V7	129.33	5382.46	5651.40	1985.74	0
FZ	129.40	5382.40	5651.44	1985.74	0
V7	141.66	5372.15	5658.16	1985.53	0
QZ-CXB	142.17	5371.72	5658.44	1985.52	0
V7	147.83	5366.99	5661.54	1985.42	0

ASSAY LOG
 PROPERTY: BELL CREEK
 HOLE No.: 9143

=====

FROM	TO	WIDTH	Au ppm
33.45	34.52	1.07	1.230
34.52	35.78	1.26	1.920
35.78	36.58	0.80	9.050
36.58	37.63	1.05	1.230
37.63	38.77	1.14	3.430
38.77	39.87	1.10	1.370
90.17	90.67	0.50	2.880
90.67	91.75	1.08	2.980
91.75	93.25	1.50	0.120
93.25	94.24	0.99	0.020
94.24	95.93	1.69	12.540
95.93	97.62	1.69	2.380
97.62	98.10	0.48	5.900
98.10	99.48	1.38	1.550
99.48	100.44	0.96	6.720
100.44	101.44	1.00	10.320
101.44	102.31	0.87	6.450
102.31	103.42	1.11	4.390
103.42	104.57	1.15	8.920
104.57	105.00	0.43	4.390
105.00	106.07	1.07	4.050
106.07	106.86	0.79	6.380

AVERAGED ASSAY INTERVALS
PROPERTY: BELL CREEK
HOLE No: 9143

=====

1. NORTH A (10.33 d.t. Core Angle: 40 6.64 t.t.)

FROM: 94.24	-----	EASTINGS:	5411.80
		NORTHINGS:	5632.16
		ELEVATION:	1986.36
	6.554 Au ppm		
TO: 104.57	-----	EASTINGS:	5403.16
		NORTHINGS:	5637.83
		ELEVATION:	1986.18

** BORSURV **

SURVEY DATA AND CALCULATED CO-ORDINATES

PROPERTY: BELL CREEK
HOLE NO: 9144
Data in metres

DATE:
SURVEY BY:
INSTRUMENT: ACID/TROPARI

```
=====
```

DEPTH	INCLINATION	BEARING	EASTINGS	NORTHINGS	ELEVATION
0.00	0.00	28.00	5698.040	5467.990	2049.600
60.97	2.00	28.00	5726.659	5521.815	2050.665
121.95	6.00	28.00	5755.218	5575.526	2054.918
243.90	12.00	35.00	5818.152	5678.225	2073.995
457.30	23.00	46.00	5950.330	5832.986	2138.166
526.82	23.00	46.00	5996.363	5877.439	2165.330

SUMMARY LITHO LOG
 PROPERTY: BELL CREEK
 HOLE No.: 9144

LITHO UNIT	DEPTH	EASTINGS	NORTHINGS	ELEVATION	CORE ANGLE
V7	39.63	5716.64	5502.98	2050.29	0
V7	81.70	5736.37	5540.07	2052.11	0
V7	103.96	5746.79	5559.68	2053.66	0
V7	119.35	5754.00	5573.24	2054.74	0
V7 fg	121.95	5755.22	5575.53	2054.92	0
V7 1x	144.45	5766.83	5594.47	2058.44	0
V7 fg	149.23	5769.30	5598.50	2059.19	0
NORTH "A"	156.63	5773.12	5604.73	2060.34	0
V9 gf	165.85	5777.87	5612.50	2061.79	0
V7 fg	175.60	5782.90	5620.71	2063.31	0
V7	179.42	5784.88	5623.92	2063.91	0
V7	195.91	5793.39	5637.81	2066.49	0
V7 frag	198.75	5794.85	5640.20	2066.93	0
NORTH "B"	207.92	5799.58	5647.93	2068.37	0
V7	248.47	5820.98	5681.54	2075.37	0
V9 gf	258.07	5826.93	5688.50	2078.26	0
V7	290.85	5847.23	5712.27	2088.11	0
V9 gf	294.48	5849.48	5714.91	2089.21	0
V7	302.40	5854.39	5720.65	2091.59	0
V9 gf	303.10	5854.82	5721.16	2091.80	0
V7 1x	324.08	5867.81	5736.37	2098.11	0
V7	341.70	5878.73	5749.15	2103.40	0
GRAPHITE	350.03	5883.89	5755.19	2105.91	0
V9	352.33	5885.31	5756.86	2106.60	0
V7	418.53	5926.32	5804.87	2126.51	0

SUMMARY LITHO LOG
PROPERTY: BELL CREEK
HOLE No.: 9144

=====

LITHO UNIT	DEPTH	EASTINGS	NORTHINGS	ELEVATION	CORE ANGLE
GREY ALT. Z0	440.97	5940.22	5821.14	2133.26	0
V7	471.32	5959.61	5841.95	2143.64	0
GREY ALT. Z0	474.00	5961.39	5843.66	2144.69	0
V7 1x	481.84	5966.58	5848.68	2147.75	0
V7	526.82	5996.36	5877.44	2165.33	0

ASSAY LOG
 PROPERTY: BELL CREEK
 HOLE No.: 9144

```
=====
```

FROM	TO	WIDTH	Au ppm
12.50	12.95	0.45	0.140
12.95	13.41	0.46	0.750
13.41	14.33	0.92	9.020
14.33	14.83	0.50	35.000
14.83	15.33	0.50	0.010
15.33	15.83	0.50	0.010
15.83	16.33	0.50	NIL
29.26	30.18	0.92	0.870
36.58	37.34	0.76	0.930
91.15	91.31	0.16	0.020
106.21	106.49	0.28	1.780
115.39	116.39	1.00	0.100
116.39	116.69	0.30	4.390
116.69	117.09	0.40	2.130
117.09	117.43	0.34	0.160
117.43	117.89	0.46	5.320
117.89	118.29	0.40	6.170
118.29	118.59	0.30	0.650
118.59	119.09	0.50	0.070
119.09	119.33	0.24	3.840
119.33	119.69	0.36	0.600
149.23	149.63	0.40	2.060
149.63	150.13	0.50	0.010
150.13	150.63	0.50	0.030
150.63	151.13	0.50	0.020
151.13	151.63	0.50	NIL
151.63	152.63	1.00	NIL
152.63	153.13	0.50	0.010
153.13	153.63	0.50	NIL
153.63	154.13	0.50	0.060
154.13	154.63	0.50	1.060
154.63	155.13	0.50	1.470
155.13	155.63	0.50	0.100
155.63	156.13	0.50	0.070
156.13	156.63	0.50	0.160
198.75	199.50	0.75	4.890
199.50	200.15	0.65	9.360
200.15	200.97	0.82	0.880
200.97	201.31	0.34	0.080
201.31	202.07	0.76	0.090
202.07	203.81	1.74	0.310
248.47	248.80	0.33	0.890
248.80	249.20	0.40	1.170
249.20	249.60	0.40	2.890
249.60	250.35	0.75	0.550
250.35	251.35	1.00	1.300
251.35	252.35	1.00	1.710
252.35	253.00	0.65	0.820
253.00	254.00	1.00	2.810
254.00	254.60	0.60	1.810

ASSAY LOG
PROPERTY: BELL CREEK
HOLE No.: 9144

=====

FROM	TO	WIDTH	Au ppm
254.60	255.60	1.00	0.690
255.60	256.60	1.00	0.340
256.60	257.35	0.75	0.340
257.35	258.07	0.72	0.550
336.70	337.70	1.00	NIL
337.70	338.70	1.00	0.060
338.70	339.70	1.00	0.020
340.70	341.70	1.00	0.010
341.70	342.70	1.00	NIL
471.32	471.82	0.50	0.500
471.82	472.32	0.50	NIL
472.32	472.82	0.50	NIL
472.82	473.32	0.50	NIL
473.32	474.32	1.00	NIL

AVERAGED ASSAY INTERVALS
PROPERTY: BELL CREEK
HOLE No: 9144

=====

1. 5500 (1.88 d.t. Core Angle: 90 1.88 t.t.)

FROM:	12.95	-----	EASTINGS:	5704.12
			NORTHINGS:	5479.42
			ELEVATION:	2049.83
		13.906 Au ppm		
TO:	14.83	-----	EASTINGS:	5705.00
			NORTHINGS:	5481.08
			ELEVATION:	2049.86

2. 5560 (2.94 d.t. Core Angle: 90 2.94 t.t.)

FROM:	116.39	-----	EASTINGS:	5752.61
			NORTHINGS:	5570.63
			ELEVATION:	2054.53
		2.820 Au ppm		
TO:	119.33	-----	EASTINGS:	5753.99
			NORTHINGS:	5573.22
			ELEVATION:	2054.74

3. NORTH B (2.22 d.t. Core Angle: 90 2.22 t.t.)

FROM:	198.75	-----	EASTINGS:	5794.85
			NORTHINGS:	5640.20
			ELEVATION:	2066.93
		4.718 Au ppm		
TO:	200.97	-----	EASTINGS:	5796.00
			NORTHINGS:	5642.07
			ELEVATION:	2067.28

4. 5670 (9.60 d.t. Core Angle: 90 9.60 t.t.)

FROM:	248.47	-----	EASTINGS:	5820.98
			NORTHINGS:	5681.54
			ELEVATION:	2075.37
		1.193 Au ppm		
TO:	258.07	-----	EASTINGS:	5826.93
			NORTHINGS:	5688.50
			ELEVATION:	2078.26

5. NORTH A (2.50 d.t. Core Angle: 90 2.50 t.t.)

FROM:	154.13	-----	EASTINGS:	5771.82
			NORTHINGS:	5602.63
			ELEVATION:	2059.95
		0.572 Au ppm		
TO:	156.63	-----	EASTINGS:	5773.12
			NORTHINGS:	5604.73
			ELEVATION:	2060.34

** BORSURV **

SURVEY DATA AND CALCULATED CO-ORDINATES

PROPERTY: BELL CREEK
HOLE NO: 9145
Data in metres

DATE:
SURVEY BY:
INSTRUMENT:

=====

DEPTH	INCLINATION	BEARING	EASTINGS	NORTHINGS	ELEVATION
0.00	-37.00	170.00	5484.800	5668.200	2048.700
39.01	-37.00	170.00	5490.210	5637.519	2025.223

SUMMARY LITHO LOG
PROPERTY: BELL CREEK
HOLE No.: 9145

```
=====
```

LITHO UNIT	DEPTH	EASTINGS	NORTHINGS	ELEVATION	CORE ANGLE
V7	4.56	5485.43	5664.61	2045.96	0
Quartz-Carbo	5.70	5485.59	5663.72	2045.27	0
V7	23.03	5487.99	5650.09	2034.84	0
NORTH "A"	23.56	5488.07	5649.67	2034.52	25
V7	39.01	5490.21	5637.52	2025.22	0

ASSAY LOG
PROPERTY: BELL CREEK
HOLE No.: 9145

FROM	TO	WIDTH	Au ppm
4.56	5.17	0.61	2.130
5.17	5.70	0.53	0.620
23.03	23.56	0.53	2.540

AVERAGED ASSAY INTERVALS
PROPERTY: BELL CREEK
HOLE No: 9145

=====

1. NORTH A (0.53 d.t. Core Angle: 25 0.22 t.t.)

FROM:	23.03	-----	EASTINGS:	5487.99
			NORTHINGS:	5650.09
			ELEVATION:	2034.84
		2.540 Au ppm		
TO:	23.56	-----	EASTINGS:	5488.07
			NORTHINGS:	5649.67
			ELEVATION:	2034.52

** BORSURV **

SURVEY DATA AND CALCULATED CO-ORDINATES

PROPERTY: BELL CREEK
HOLE NO: 9146
Data in metres

DATE:
SURVEY BY:
INSTRUMENT:

=====

DEPTH	INCLINATION	BEARING	EASTINGS	NORTHINGS	ELEVATION
0.00	-37.00	198.00	5480.600	5667.500	2048.700
41.76	-37.00	198.00	5470.294	5635.781	2023.568

SUMMARY LITHO LOG
PROPERTY: BELL CREEK
HOLE No.: 9146

LITHO UNIT	DEPTH	EASTINGS	NORTHINGS	ELEVATION	CORE ANGLE
V7	2.40	5480.01	5665.68	2047.26	0
Quartz-Carb.	3.62	5479.71	5664.75	2046.52	45
V7	20.90	5475.44	5651.63	2036.12	0
NORTH "A"	21.84	5475.21	5650.91	2035.56	20
V7	38.50	5471.10	5638.26	2025.53	0
CbV7	41.76	5470.29	5635.78	2023.57	0

ASSAY LOG
PROPERTY: BELL CREEK
HOLE No.: 9146

=====

FROM	TO	WIDTH	Au ppm
2.40	3.62	1.22	0.820
20.90	21.32	0.42	2.470
21.32	21.84	0.52	1.300
21.84	22.66	0.82	0.140
38.50	39.25	0.75	0.070
39.25	40.56	1.31	1.130

AVERAGED ASSAY INTERVALS
PROPERTY: BELL CREEK
HOLE No: 9146

=====

1. NORTH A (0.94 d.t. Core Angle: 20 0.32 t.t.)

FROM:	20.90	-----	EASTINGS:	5475.44
			NORTHINGS:	5651.63
			ELEVATION:	2036.12
		1.823 Au ppm		
TO:	21.84	-----	EASTINGS:	5475.21
			NORTHINGS:	5650.91
			ELEVATION:	2035.56

** BORSURV **

SURVEY DATA AND CALCULATED CO-ORDINATES

PROPERTY: BELL CREEK
HOLE NO: 9147
Data in metres

DATE:
SURVEY BY:
INSTRUMENT:

=====

DEPTH	INCLINATION	BEARING	EASTINGS	NORTHINGS	ELEVATION
0.00	-29.00	223.00	5480.400	5668.000	2048.700
47.85	-29.00	223.00	5451.858	5637.392	2025.502

SUMMARY LITHO LOG
PROPERTY: BELL CREEK
HOLE No.: 9147

=====

LITHO UNIT	DEPTH	EASTINGS	NORTHINGS	ELEVATION	CORE ANGLE
V7	35.96	5458.95	5645.00	2031.27	0
NORTH "A"	36.47	5458.65	5644.67	2031.02	30
V7 gf	41.75	5455.50	5641.29	2028.46	0
V7 bxa	44.50	5453.86	5639.54	2027.13	0
3D	47.85	5451.86	5637.39	2025.50	0

ASSAY LOG
PROPERTY: BELL CREEK
HOLE No.: 9147

FROM	TO	WIDTH	Au ppm
35.96	36.47	0.51	5.210
36.47	37.35	0.88	0.990
37.35	39.85	2.50	0.820
39.85	41.35	1.50	0.480
41.35	42.52	1.17	7.590
42.52	43.87	1.35	3.330

AVERAGED ASSAY INTERVALS
PROPERTY: BELL CREEK
HOLE No: 9147

=====

1. NORTH A (1.39 d.t. Core Angle: 30 0.70 t.t.)

FROM:	35.96	-----	EASTINGS:	5458.95
			NORTHINGS:	5645.00
			ELEVATION:	2031.27
		2.538 Au ppm		
TO:	37.35	-----	EASTINGS:	5458.12
			NORTHINGS:	5644.11
			ELEVATION:	2030.59

** BORSURV **

SURVEY DATA AND CALCULATED CO-ORDINATES

PROPERTY: BELL CREEK
HOLE NO: 9148
Data in metres

DATE:
SURVEY BY:
INSTRUMENT: SPOT

=====

DEPTH	INCLINATION	BEARING	EASTINGS	NORTHINGS	ELEVATION
0.00	-42.00	198.00	5480.600	5667.500	2048.700
40.00	-47.00	198.00	5471.784	5640.366	2020.664

SUMMARY LITHO LOG
PROPERTY: BELL CREEK
HOLE No.: 9148

=====

LITHO UNIT	DEPTH	EASTINGS	NORTHINGS	ELEVATION	CORE ANGLE
V7	4.01	5479.72	5664.78	2045.89	0
HAULAGE VEIN	5.60	5479.37	5663.70	2044.77	30
V7	34.80	5472.93	5643.89	2024.31	0
NORTH A	35.95	5472.68	5643.11	2023.50	20
V7	40.00	5471.78	5640.37	2020.66	0

ASSAY LOG
PROPERTY: BELL CREEK
HOLE No.: 9148

=====

FROM	TO	WIDTH	Au ppm
34.80	35.24	0.44	0.290
35.24	35.93	0.69	2.370

AVERAGED ASSAY INTERVALS
PROPERTY: BELL CREEK
HOLE No: 9148

=====

1. NORTH A (1.13 d.t. Core Angle: 20 0.39 t.t.)

FROM:	34.80	-----	EASTINGS:	5472.93
			NORTHINGS:	5643.89
			ELEVATION:	2024.31
		1.560 Au ppm		
TO:	35.93	-----	EASTINGS:	5472.68
			NORTHINGS:	5643.13
			ELEVATION:	2023.52

** BORSURV **

SURVEY DATA AND CALCULATED CO-ORDINATES

PROPERTY: BELL CREEK
HOLE NO: 9149
Data in metres

DATE:
SURVEY BY:
INSTRUMENT: SPOT

```
=====
```

DEPTH	INCLINATION	BEARING	EASTINGS	NORTHINGS	ELEVATION
0.00	-47.00	170.00	5484.800	5668.200	2048.700
47.84	-47.00	170.00	5490.466	5636.069	2013.712

SUMMARY LITHO LOG
PROPERTY: BELL CREEK
HOLE No.: 9149

=====

LITHO UNIT	DEPTH	EASTINGS	NORTHINGS	ELEVATION	CORE ANGLE
V7	5.25	5485.42	5664.67	2044.86	0
HAULAGE VEIN	6.78	5485.60	5663.65	2043.74	25
V7 1x	29.81	5488.33	5648.18	2026.90	0
NORTH A	32.94	5488.70	5646.08	2024.61	25
V7	47.84	5490.47	5636.07	2013.71	0

ASSAY LOG
PROPERTY: BELL CREEK
HOLE No.: 9149

FROM	TO	WIDTH	Au ppm
5.80	6.78	0.98	2.330
29.81	31.00	1.19	2.540
31.00	31.86	0.86	10.830
31.86	32.94	1.08	15.020
32.94	33.52	0.58	0.890

AVERAGED ASSAY INTERVALS
PROPERTY: BELL CREEK
HOLE No: 9149

=====

1. NORTH A (3.13 d.t. Core Angle: 22 1.17 t.t.)

FROM:	29.81	-----	EASTINGS:	5488.33
			NORTHINGS:	5648.18
			ELEVATION:	2026.90
		9.124 Au ppm		
TO:	32.94	-----	EASTINGS:	5488.70
			NORTHINGS:	5646.08
			ELEVATION:	2024.61

** BORSURV **

SURVEY DATA AND CALCULATED CO-ORDINATES

PROPERTY: BELL CREEK
HOLE NO: 9150
Data in metres

DATE:
SURVEY BY:
INSTRUMENT:

=====

DEPTH	INCLINATION	BEARING	EASTINGS	NORTHINGS	ELEVATION
0.00	0.00	361.00	5548.200	5614.100	1989.800
10.36	0.00	361.00	5548.381	5624.458	1989.800

SUMMARY LITHO LOG
PROPERTY: BELL CREEK
HOLE No.: 9150

LITHO UNIT	DEPTH	EASTINGS	NORTHINGS	ELEVATION	CORE ANGLE
CB-Qtz STRIN	0.50	5548.21	5614.60	1989.80	0
V7	10.36	5548.38	5624.46	1989.80	0

** BORSURV **

SURVEY DATA AND CALCULATED CO-ORDINATES

PROPERTY: BELL CREEK
HOLE NO: 9151
Data in metres

DATE:
SURVEY BY:
INSTRUMENT:

```
=====
```

DEPTH	INCLINATION	BEARING	EASTINGS	NORTHINGS	ELEVATION
0.00	0.00	181.00	5548.300	5611.400	1989.800
7.47	0.00	181.00	5548.170	5603.931	1989.800

SUMMARY LITHO LOG
PROPERTY: BELL CREEK
HOLE No.: 9151

=====

LITHO UNIT	DEPTH	EASTINGS	NORTHINGS	ELEVATION	CORE ANGLE
V7	0.52	5548.29	5610.88	1989.80	0
NORTH "A"	6.84	5548.18	5604.56	1989.80	15
V7	7.47	5548.17	5603.93	1989.80	0

ASSAY LOG
PROPERTY: BELL CREEK
HOLE No.: 9151

FROM	TO	WIDTH	Au ppm
0.00	2.00	2.00	5.830
2.00	3.00	1.00	4.800
3.00	4.22	1.22	5.210
4.22	5.52	1.30	12.040
5.52	6.84	1.32	24.240

AVERAGED ASSAY INTERVALS
PROPERTY: BELL CREEK
HOLE No: 9151

=====

1. NORTH A (6.84 d.t. Core Angle: 15 1.77 t.t.)

FROM:	0.00	-----	EASTINGS:	5548.30
			NORTHINGS:	5611.40
			ELEVATION:	1989.80
	10.302 Au ppm			
TO:	6.84	-----	EASTINGS:	5548.18
			NORTHINGS:	5604.56
			ELEVATION:	1989.80

** BORSURV **

SURVEY DATA AND CALCULATED CO-ORDINATES

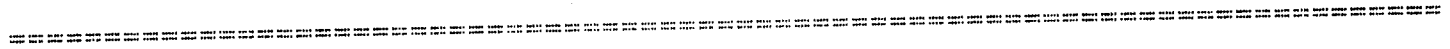
PROPERTY: BELL CREEK
HOLE NO: 9152
Data in metres

DATE:
SURVEY BY:
INSTRUMENT:

=====

DEPTH	INCLINATION	BEARING	EASTINGS	NORTHINGS	ELEVATION
0.00	0.00	144.00	5548.300	5611.400	1989.800
9.30	0.00	144.00	5553.766	5603.876	1989.800

SUMMARY LITHO LOG
PROPERTY: BELL CREEK
HOLE No.: 9152



LITHO UNIT	DEPTH	EASTINGS	NORTHINGS	ELEVATION	CORE ANGLE
V7 cb	6.77	5552.28	5605.92	1989.80	0
NORTH "A"	9.08	5553.64	5604.05	1989.80	20
V7	9.30	5553.77	5603.88	1989.80	0

ASSAY LOG
PROPERTY: BELL CREEK
HOLE No.: 9152

FROM	TO	WIDTH	Au ppm
0.00	2.37	2.37	3.150
2.37	3.43	1.06	0.960
3.43	4.70	1.27	2.570
4.70	5.95	1.25	0.820
5.95	6.77	0.82	2.190
6.77	7.98	1.21	5.830
7.98	9.08	1.10	30.940

AVERAGED ASSAY INTERVALS
PROPERTY: BELL CREEK
HOLE No: 9152

=====

1. NORTH A (2.31 d.t. Core Angle: 90 2.31 t.t.)

FROM:	6.77	-----	EASTINGS:	5552.28
			NORTHINGS:	5605.92
			ELEVATION:	1989.80
		17.787 Au ppm		
TO:	9.08	-----	EASTINGS:	5553.64
			NORTHINGS:	5604.05
			ELEVATION:	1989.80

** BORSURV **

SURVEY DATA AND CALCULATED CO-ORDINATES

PROPERTY: BELL CREEK
HOLE NO: 9153
Data in metres

DATE:
SURVEY BY:
INSTRUMENT:

```
=====
```

DEPTH	INCLINATION	BEARING	EASTINGS	NORTHINGS	ELEVATION
0.00	-28.00	360.00	5490.300	5580.200	1987.200
61.28	-24.00	359.50	5490.060	5635.278	1960.337

SUMMARY LITHO LOG
 PROPERTY: BELL CREEK
 HOLE No.: 9153

=====

LITHO UNIT	DEPTH	EASTINGS	NORTHINGS	ELEVATION	CORE ANGLE
V7	8.84	5490.27	5588.15	1983.32	0
GREY ALT. Z0	23.78	5490.21	5601.57	1976.78	0
V7	30.33	5490.18	5607.46	1973.90	0
GREY ALT. Z0	41.15	5490.14	5617.19	1969.16	0
V7	44.39	5490.13	5620.10	1967.74	0
NORTH "A" HD	49.75	5490.10	5624.91	1965.39	0
V7	57.46	5490.07	5631.84	1962.01	0
QTZ-CARB VEI	58.84	5490.07	5633.08	1961.41	0
V7	61.28	5490.06	5635.28	1960.34	0

ASSAY LOG
PROPERTY: BELL CREEK
HOLE No.: 9153

=====

FROM	TO	WIDTH	Au ppm
18.23	18.73	0.50	0.840
18.73	19.23	0.50	6.550
19.23	19.73	0.50	0.810
19.73	20.23	0.50	0.410
20.23	20.60	0.37	0.860
32.59	33.09	0.50	7.990
33.09	33.59	0.50	5.860
33.59	34.14	0.55	1.180
44.39	44.89	0.50	0.970
44.89	45.39	0.50	12.440
45.39	46.39	1.00	10.150
46.39	46.68	0.29	9.190
48.26	48.76	0.50	6.240
48.76	49.26	0.50	1.380
49.26	49.76	0.50	2.150
55.35	55.57	0.22	0.550
57.46	58.46	1.00	2.030
58.46	58.96	0.50	0.550

AVERAGED ASSAY INTERVALS
PROPERTY: BELL CREEK
HOLE No: 9153

=====

1. HW-1 (2.37 d.t. Core Angle: 90 2.37 t.t.)

FROM:	18.23	-----	EASTINGS:	5490.23
			NORTHINGS:	5596.58
			ELEVATION:	1979.21
		1.951 Au ppm		
TO:	20.60	-----	EASTINGS:	5490.22
			NORTHINGS:	5598.71
			ELEVATION:	1978.17

2. HW-2 (1.55 d.t. Core Angle: 90 1.55 t.t.)

FROM:	32.59	-----	EASTINGS:	5490.17
			NORTHINGS:	5609.49
			ELEVATION:	1972.91
		4.886 Au ppm		
TO:	34.14	-----	EASTINGS:	5490.17
			NORTHINGS:	5610.88
			ELEVATION:	1972.23

3. NORTH A (2.29 d.t. Core Angle: 90 2.29 t.t.)

FROM:	44.39	-----	EASTINGS:	5490.13
			NORTHINGS:	5620.10
			ELEVATION:	1967.74
		8.524 Au ppm		
TO:	46.68	-----	EASTINGS:	5490.12
			NORTHINGS:	5622.16
			ELEVATION:	1966.74

** BORSURV **

SURVEY DATA AND CALCULATED CO-ORDINATES

PROPERTY: BELL CREEK
HOLE NO: 9154
Data in metres

DATE:
SURVEY BY:
INSTRUMENT:

=====

DEPTH	INCLINATION	BEARING	EASTINGS	NORTHINGS	ELEVATION
0.00	0.00	220.00	5439.600	5611.400	1989.600
12.80	0.00	220.00	5431.372	5601.595	1989.600

SUMMARY LITHO LOG
PROPERTY: BELL CREEK
HOLE No.: 9154

=====

LITHO UNIT	DEPTH	EASTINGS	NORTHINGS	ELEVATION	CORE ANGLE
V7	1.42	5438.69	5610.31	1989.60	0
Qz-Cb Veins	1.65	5438.54	5610.14	1989.60	0
V7	12.80	5431.37	5601.59	1989.60	0

ASSAY LOG
PROPERTY: BELL CREEK
HOLE No.: 9154

=====

FROM	TO	WIDTH	Au ppm
1.12	1.65	0.53	1.780

** BORSURV **

SURVEY DATA AND CALCULATED CO-ORDINATES

PROPERTY: BELL CREEK
HOLE NO: 9155
Data in metres

DATE:
SURVEY BY:
INSTRUMENT:

```
=====
```

DEPTH	INCLINATION	BEARING	EASTINGS	NORTHINGS	ELEVATION
0.00	0.00	300.00	5564.200	5612.300	1988.000
11.88	0.00	300.00	5553.912	5618.240	1988.000

SUMMARY LITHO LOG
PROPERTY: BELL CREEK
HOLE No.: 9155

LITHO UNIT	DEPTH	EASTINGS	NORTHINGS	ELEVATION	CORE ANGLE
V7	6.78	5558.33	5615.69	1988.00	0
HWZ NORTH "A	8.23	5557.07	5616.41	1988.00	22
V7	11.88	5553.91	5618.24	1988.00	0

ASSAY LOG
PROPERTY: BELL CREEK
HOLE No.: 9155

=====

FROM	TO	WIDTH	Au ppm
6.78	6.98	0.20	4.940
6.98	7.29	0.31	1.790
7.29	8.25	0.96	24.100

AVERAGED ASSAY INTERVALS
PROPERTY: BELL CREEK
HOLE No: 9155

=====

1. NORTH A (1.47 d.t. Core Angle: 22 0.55 t.t.)

FROM:	6.78	-----	EASTINGS:	5558.33
			NORTHINGS:	5615.69
			ELEVATION:	1988.00
		16.788 Au ppm		
TO:	8.25	-----	EASTINGS:	5557.06
			NORTHINGS:	5616.42
			ELEVATION:	1988.00

** BORSURV **

SURVEY DATA AND CALCULATED CO-ORDINATES

PROPERTY: BELL CREEK
HOLE NO: 9156
Data in metres

DATE:
SURVEY BY:
INSTRUMENT:

DEPTH	INCLINATION	BEARING	EASTINGS	NORTHINGS	ELEVATION
0.00	0.00	371.00	5520.500	5611.500	1988.000
21.34	0.00	371.00	5524.572	5632.448	1988.000

SUMMARY LITHO LOG
PROPERTY: BELL CREEK
HOLE No.: 9156

=====

LITHO UNIT	DEPTH	EASTINGS	NORTHINGS	ELEVATION	CORE ANGLE
V7	2.07	5520.90	5613.53	1988.00	0
HWZ NORTH "A	2.92	5521.06	5614.37	1988.00	70
V7	21.34	5524.57	5632.45	1988.00	0

ASSAY LOG
PROPERTY: BELL CREEK
HOLE No.: 9156

FROM	TO	WIDTH	Au ppm
2.07	2.59	0.52	3.700
2.59	2.92	0.33	14.430
13.62	14.62	1.00	0.050
14.62	15.63	1.01	0.050

AVERAGED ASSAY INTERVALS
PROPERTY: BELL CREEK
HOLE No: 9156

=====

1. NORTH A (0.85 d.t. Core Angle: 70 0.80 t.t.)

FROM:	2.07	-----	EASTINGS:	5520.90
			NORTHINGS:	5613.53
			ELEVATION:	1988.00
		7.866 Au ppm		
TO:	2.92	-----	EASTINGS:	5521.06
			NORTHINGS:	5614.37
			ELEVATION:	1988.00

** BORSURV **

SURVEY DATA AND CALCULATED CO-ORDINATES

PROPERTY: BELL CREEK
HOLE NO: 9158
Data in metres

DATE:
SURVEY BY:
INSTRUMENT:

```
=====
```

DEPTH	INCLINATION	BEARING	EASTINGS	NORTHINGS	ELEVATION
0.00	-20.00	360.00	5506.200	5561.000	1989.400
45.73	-20.00	358.00	5505.450	5603.966	1973.759
67.68	-20.00	358.00	5504.730	5624.579	1966.252

SUMMARY LITHO LOG
PROPERTY: BELL CREEK
HOLE No.: 9158

=====

LITHO UNIT	DEPTH	EASTINGS	NORTHINGS	ELEVATION	CORE ANGLE
V7	38.68	5505.57	5597.34	1976.17	0
ALT ZONE	41.00	5505.53	5599.52	1975.38	0
V7	52.30	5505.23	5610.14	1971.51	0
ALT ZONE	53.41	5505.20	5611.18	1971.13	0
V7	60.94	5504.95	5618.25	1968.56	0
NORTH "A" ZONE	63.33	5504.87	5620.49	1967.74	0
V7	67.68	5504.73	5624.58	1966.25	0

ASSAY LOG
PROPERTY: BELL CREEK
HOLE No.: 9158

FROM	TO	WIDTH	Au ppm
38.68	38.88	0.20	0.520
38.88	39.38	0.50	0.490
39.38	39.88	0.50	1.410
39.88	40.38	0.50	1.240
40.38	41.00	0.62	0.080
51.87	52.37	0.50	0.050
52.37	52.82	0.45	2.160
52.82	53.32	0.50	0.140
60.44	60.94	0.50	0.020
60.94	61.24	0.30	2.320
61.24	61.74	0.50	0.250
61.74	62.24	0.50	3.910
62.24	63.04	0.80	8.060
63.04	63.38	0.34	8.090
63.38	63.88	0.50	0.040

AVERAGED ASSAY INTERVALS
PROPERTY: BELL CREEK
HOLE No: 915B

=====

1. NORTH A (1.64 d.t. Core Angle: 90 1.64 t.t.)

FROM:	61.74	-----	EASTINGS:	5504.92
			NORTHINGS:	5619.00
			ELEVATION:	1968.28
		6.801 Au ppm		
TO:	63.38	-----	EASTINGS:	5504.87
			NORTHINGS:	5620.54
			ELEVATION:	1967.72

** BORSURV **

SURVEY DATA AND CALCULATED CO-ORDINATES

PROPERTY: BELL CREEK
HOLE NO: 9159
Data in metres

DATE:
SURVEY BY:
INSTRUMENT:

```
=====
```

DEPTH	INCLINATION	BEARING	EASTINGS	NORTHINGS	ELEVATION
0.00	-25.00	337.00	5491.000	5581.300	1988.000
38.00	-26.00	332.00	5476.234	5612.257	1971.641
66.14	-26.00	332.00	5464.360	5634.589	1959.305

SUMMARY LITHO LOG
PROPERTY: BELL CREEK
HOLE No.: 9159

=====

LITHO UNIT	DEPTH	EASTINGS	NORTHINGS	ELEVATION	CORE ANGLE
V7	20.12	5483.18	5597.69	1979.34	0
MIN & ALT	20.86	5482.89	5598.29	1979.02	0
V7a	33.85	5477.85	5608.88	1973.43	0
HWA	34.86	5477.45	5609.70	1972.99	80
V7gf	40.43	5475.21	5614.19	1970.58	0
V7	49.80	5471.26	5621.62	1966.47	0
NORTH "A"	51.58	5470.50	5623.03	1965.69	80
V7	66.14	5464.36	5634.59	1959.30	0

ASSAY LOG
PROPERTY: BELL CREEK
HOLE No.: 9159

FROM	TO	WIDTH	Au ppm
20.12	20.86	0.74	4.900
20.86	21.55	0.69	0.500
33.85	34.86	1.01	5.900
34.86	36.00	1.14	0.500
36.00	37.20	1.20	0.500
37.20	38.40	1.20	6.100
38.40	39.78	1.38	0.500
39.78	40.43	0.65	0.500
49.80	50.85	1.05	4.100
50.85	51.58	0.73	6.900

AVERAGED ASSAY INTERVALS
PROPERTY: BELL CREEK
HOLE No: 9159

=====

1. NORTH A (1.78 d.t. Core Angle: 80 1.75 t.t.)

FROM:	49.80	-----	EASTINGS:	5471.26
			NORTHINGS:	5621.62
			ELEVATION:	1966.47
		5.248 Au ppm		
TO:	51.58	-----	EASTINGS:	5470.50
			NORTHINGS:	5623.03
			ELEVATION:	1965.69

** BORSURV **

SURVEY DATA AND CALCULATED CO-ORDINATES

PROPERTY: BELL CREEK
HOLE NO: 9161
Data in metres

DATE:
SURVEY BY:
INSTRUMENT:

```
=====
```

DEPTH	INCLINATION	BEARING	EASTINGS	NORTHINGS	ELEVATION
0.00	1.00	290.00	5490.600	5581.500	1988.000
153.65	2.00	306.00	5354.982	5653.610	1992.022

SUMMARY LITHO LOG
PROPERTY: BELL CREEK
HOLE No.: 9161

=====

LITHO UNIT	DEPTH	EASTINGS	NORTHINGS	ELEVATION	CORE ANGLE
V7	40.94	5454.46	5600.71	1989.07	0
3D	75.76	5423.73	5617.05	1989.98	0
V7	103.62	5399.14	5630.13	1990.71	0
NORTH "A" VE	107.28	5395.91	5631.85	1990.81	30
V7	153.65	5354.98	5653.61	1992.02	0

ASSAY LOG
PROPERTY: BELL CREEK
HOLE No.: 9161

FROM	TO	WIDTH	Au ppm
36.63	37.36	0.73	4.250
37.36	38.58	1.22	9.980
102.62	103.62	1.00	NIL
103.62	104.02	0.40	NIL
104.02	104.47	0.45	1.800
104.47	105.17	0.70	1.800
105.17	105.92	0.75	2.500
105.92	106.32	0.40	1.900
106.32	107.28	0.96	NIL

AVERAGED ASSAY INTERVALS
PROPERTY: BELL CREEK
HOLE No: 9161

=====

1. NORTH A (3.66 d.t. Core Angle: 30 1.83 t.t.)

FROM: 103.62	-----	EASTINGS:	5399.14
		NORTHINGS:	5630.13
		ELEVATION:	1990.71
	1.286 Au ppm		
TO: 107.28	-----	EASTINGS:	5395.91
		NORTHINGS:	5631.85
		ELEVATION:	1990.81

** BORSURV **

SURVEY DATA AND CALCULATED CO-ORDINATES

PROPERTY: BELL CREEK
HOLE NO: 9162
Data in metres

DATE:
SURVEY BY:
INSTRUMENT:

```
=====
```

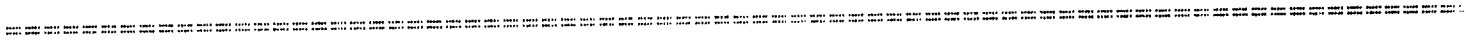
DEPTH	INCLINATION	BEARING	EASTINGS	NORTHINGS	ELEVATION
0.00	0.00	180.00	5600.200	5435.300	2154.200
6.40	0.00	180.00	5600.200	5428.900	2154.200

SUMMARY LITHO LOG
PROPERTY: BELL CREEK
HOLE No.: 9162

=====

LITHO UNIT	DEPTH	EASTINGS	NORTHINGS	ELEVATION	CORE ANGLE
HWZ	1.00	5600.20	5434.30	2154.20	0
HWZ b1	2.95	5600.20	5432.35	2154.20	0
V7 gf	6.40	5600.20	5428.90	2154.20	0

ASSAY LOG
PROPERTY: BELL CREEK
HOLE No.: 9162



FROM	TO	WIDTH	Au ppm
0.00	1.00	1.00	0.500
1.00	2.45	1.45	4.600
2.45	2.95	0.50	NIL

AVERAGED ASSAY INTERVALS
PROPERTY: BELL CREEK
HOLE No: 9162

=====

1. BELL CREEK HORIZON (1.45 d.t. Core Angle: 90 1.45 t.t.)

FROM:	1.00	-----	EASTINGS:	5600.20
			NORTHINGS:	5434.30
			ELEVATION:	2154.20
		4.600 Au ppm		
TO:	2.45	-----	EASTINGS:	5600.20
			NORTHINGS:	5432.85
			ELEVATION:	2154.20

** BORSURV **

SURVEY DATA AND CALCULATED CO-ORDINATES

PROPERTY: BELL CREEK
HOLE NO: 9163
Data in metres

DATE:
SURVEY BY:
INSTRUMENT:

=====

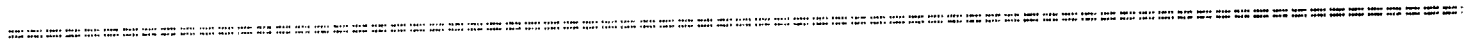
DEPTH	INCLINATION	BEARING	EASTINGS	NORTHINGS	ELEVATION
0.00	0.00	170.00	5603.500	5434.900	2154.700
6.10	0.00	170.00	5604.559	5428.893	2154.700

SUMMARY LITHO LOG
PROPERTY: BELL CREEK
HOLE No.: 9163

=====

LITHO UNIT	DEPTH	EASTINGS	NORTHINGS	ELEVATION	CORE ANGLE
HWZ	0.85	5603.65	5434.06	2154.70	0
WEAK MIN	2.05	5603.86	5432.88	2154.70	0
V7	6.10	5604.56	5428.89	2154.70	0

ASSAY LOG
PROPERTY: BELL CREEK
HOLE No.: 9163



FROM	TO	WIDTH	Au ppm
0.00	0.85	0.85	1.300
0.85	2.05	1.20	2.100

AVERAGED ASSAY INTERVALS
PROPERTY: BELL CREEK
HOLE No: 9163

=====

1. BELL CREEK HORIZON (2.05 d.t. Core Angle: 90 2.05 t.t.)

FROM:	0.00	-----	EASTINGS:	5603.50
			NORTHINGS:	5434.90
			ELEVATION:	2154.70
		1.768 Au ppm		
TO:	2.05	-----	EASTINGS:	5603.86
			NORTHINGS:	5432.88
			ELEVATION:	2154.70

** BORSURV **

SURVEY DATA AND CALCULATED CO-ORDINATES

PROPERTY: BELL CREEK
HOLE NO: 9164
Data in metres

DATE:
SURVEY BY:
INSTRUMENT:

DEPTH	INCLINATION	BEARING	EASTINGS	NORTHINGS	ELEVATION
0.00	0.00	180.00	5596.000	5435.000	2154.200
6.10	0.00	180.00	5596.000	5428.900	2154.200

SUMMARY LITHO LOG
PROPERTY: BELL CREEK
HOLE No.: 9164

=====

LITHO UNIT	DEPTH	EASTINGS	NORTHINGS	ELEVATION	CORE ANGLE
HWZ	2.72	5596.00	5432.28	2154.20	0
V7 gf	5.48	5596.00	5429.52	2154.20	0

ASSAY LOG
PROPERTY: BELL CREEK
HOLE No.: 9164

FROM	TO	WIDTH	Au ppm
0.00	0.95	0.95	6.150
0.95	1.75	0.80	3.300
1.75	2.72	0.97	1.400
2.72	3.95	1.23	NIL

AVERAGED ASSAY INTERVALS
PROPERTY: BELL CREEK
HOLE No: 9164

=====

1. BELL CREEK HORIZON (1.75 d.t. Core Angle: 90 1.75 t.t.)

FROM:	0.00	-----	EASTINGS:	5596.00
			NORTHINGS:	5435.00
			ELEVATION:	2154.20
		4.847 Au ppm		
TO:	1.75	-----	EASTINGS:	5596.00
			NORTHINGS:	5433.25
			ELEVATION:	2154.20

** BORSURV **

SURVEY DATA AND CALCULATED CO-ORDINATES

PROPERTY: BELL CREEK
HOLE NO: 9165
Data in metres

DATE:
SURVEY BY:
INSTRUMENT:

=====

DEPTH	INCLINATION	BEARING	EASTINGS	NORTHINGS	ELEVATION
0.00	15.00	297.50	5490.600	5581.500	1988.000
146.60	17.00	320.00	5380.698	5669.706	2028.408

SUMMARY LITHO LOG
PROPERTY: BELL CREEK
HOLE No.: 9165

LITHO UNIT	DEPTH	EASTINGS	NORTHINGS	ELEVATION	CORE ANGLE
	119.32	5401.15	5653.29	2020.89	0
NORTH "A"	122.00	5399.14	5654.90	2021.63	0
V7	126.47	5395.79	5657.59	2022.86	0
MIN	126.80	5395.54	5657.79	2022.95	0
V7	131.12	5392.30	5660.39	2024.14	0
Qtz-Cb	132.58	5391.21	5661.27	2024.54	17
Qtz-Cb	139.78	5385.81	5665.60	2026.53	0

ASSAY LOG
PROPERTY: BELL CREEK
HOLE No.: 9165

FROM	TO	WIDTH	Au ppm
119.32	120.00	0.68	3.600
120.00	120.80	0.80	1.000
120.80	122.00	1.20	0.500
122.00	122.83	0.83	0.600
126.42	126.80	0.38	1.200
126.80	127.40	0.60	NIL
131.12	132.58	1.46	NIL
139.35	139.78	0.43	7.500

AVERAGED ASSAY INTERVALS
PROPERTY: BELL CREEK
HOLE No: 9165

=====

1. NORTH A (2.68 d.t. Core Angle: 30 1.34 t.t.)

FROM: 119.32	-----	EASTINGS:	5401.15
		NORTHINGS:	5653.29
		ELEVATION:	2020.89
	1.436 Au ppm		
TO: 122.00	-----	EASTINGS:	5399.14
		NORTHINGS:	5654.90
		ELEVATION:	2021.63

** BORSURV **

SURVEY DATA AND CALCULATED CO-ORDINATES

PROPERTY: BELL CREEK
HOLE NO: 9170
Data in metres

DATE:
SURVEY BY:
INSTRUMENT:

DEPTH	INCLINATION	BEARING	EASTINGS	NORTHINGS	ELEVATION
0.00	0.00	173.00	5605.300	5429.600	2119.200
6.00	0.00	173.00	5606.031	5423.645	2119.200

SUMMARY LITHO LOG
PROPERTY: BELL CREEK
HOLE No.: 9170

=====

LITHO UNIT	DEPTH	EASTINGS	NORTHINGS	ELEVATION	CORE ANGLE
V7 gf	5.60	5605.98	5424.04	2119.20	0

ASSAY LOG
PROPERTY: BELL CREEK
HOLE No.: 9170

FROM	TO	WIDTH	Au ppm
0.00	1.00	1.00	NIL
1.00	2.00	1.00	NIL
2.00	3.00	1.00	NIL
3.00	4.00	1.00	NIL
4.00	5.60	1.60	NIL

** BORSURV **

SURVEY DATA AND CALCULATED CO-ORDINATES

PROPERTY: BELL CREEK
HOLE NO: 9171
Data in metres

DATE:
SURVEY BY:
INSTRUMENT:

=====

DEPTH	INCLINATION	BEARING	EASTINGS	NORTHINGS	ELEVATION
0.00	0.00	353.00	5604.400	5431.900	2119.200
18.00	0.00	353.00	5602.206	5449.766	2119.200

SUMMARY LITHO LOG
PROPERTY: BELL CREEK
HOLE No.: 9171

LITHO UNIT	DEPTH	EASTINGS	NORTHINGS	ELEVATION	CORE ANGLE
V7gf	2.48	5604.10	5434.36	2119.20	0
MIN b1	4.38	5603.87	5436.25	2119.20	0
V7	5.79	5603.69	5437.65	2119.20	0
V13	18.00	5602.21	5449.77	2119.20	0

ASSAY LOG

PROPERTY: BELL CREEK

HOLE No.: 9171

FROM	TO	WIDTH	Au ppm
2.48	3.05	0.57	4.130
3.05	3.90	0.85	NIL
7.15	8.16	1.01	NIL
10.87	11.25	0.38	NIL

** BORSURV **

SURVEY DATA AND CALCULATED CO-ORDINATES

PROPERTY: BELL CREEK
HOLE NO: 9172
Data in metres

DATE:
SURVEY BY:
INSTRUMENT:

=====

DEPTH	INCLINATION	BEARING	EASTINGS	NORTHINGS	ELEVATION
0.00	52.10	136.00	5603.210	5442.320	2110.870
28.96	46.00	143.00	5615.537	5427.887	2132.743

SUMMARY LITHO LOG
PROPERTY: BELL CREEK
HOLE No.: 9172

=====

LITHO UNIT	DEPTH	EASTINGS	NORTHINGS	ELEVATION	CORE ANGLE
V13	11.33	5608.03	5436.67	2119.43	0
V7gf	23.50	5613.21	5430.61	2128.62	0
WEST ZONE (H	25.60	5614.11	5429.56	2130.21	0
V7gf	28.96	5615.54	5427.89	2132.74	0

ASSAY LOG
PROPERTY: BELL CREEK
HOLE No.: 9172

FROM	TO	WIDTH	Au ppm
11.33	12.00	0.67	0.700
21.22	21.94	0.72	1.200
22.86	23.50	0.64	NIL
23.50	24.30	0.80	NIL
24.30	25.03	0.73	0.900
25.03	25.60	0.57	5.100

** BORSURV **

SURVEY DATA AND CALCULATED CO-ORDINATES

PROPERTY: BELL CREEK
HOLE NO: 9173
Data in metres

DATE:
SURVEY BY:
INSTRUMENT:

```
=====
```

DEPTH	INCLINATION	BEARING	EASTINGS	NORTHINGS	ELEVATION
0.00	60.00	158.54	5602.997	5442.810	2110.860
30.48	60.00	158.54	5608.573	5428.627	2137.256

SUMMARY LITHO LOG
PROPERTY: BELL CREEK
HOLE No.: 9173

LITHO UNIT	DEPTH	EASTINGS	NORTHINGS	ELEVATION	CORE ANGLE
V13 se	9.47	5604.73	5438.40	2119.06	0
V7gf	24.70	5607.52	5431.32	2132.25	0
WEST ZONE	26.65	5607.87	5430.41	2133.94	0
V7gf	30.48	5608.57	5428.63	2137.26	0

ASSAY LOG
PROPERTY: BELL CREEK
HOLE No.: 9173

=====

FROM	TO	WIDTH	Au ppm
15.00	16.16	1.16	8.200
24.00	24.70	0.70	0.100
24.70	25.58	0.88	20.800
25.58	26.65	1.07	59.000
26.65	27.43	0.78	1.500

AVERAGED ASSAY INTERVALS
PROPERTY: BELL CREEK
HOLE No: 9173

=====

1. BELL CREEK HORIZON (1.95 d.t. Core Angle: 90 1.95 t.t.)

FROM:	24.70	-----	EASTINGS:	5607.52
			NORTHINGS:	5431.32
			ELEVATION:	2132.25
		41.761 Au ppm		
TO:	26.65	-----	EASTINGS:	5607.87
			NORTHINGS:	5430.41
			ELEVATION:	2133.94

** BORSURV **

SURVEY DATA AND CALCULATED CO-ORDINATES

PROPERTY: BELL CREEK
HOLE NO: 9174
Data in metres

DATE:
SURVEY BY:
INSTRUMENT:

DEPTH	INCLINATION	BEARING	EASTINGS	NORTHINGS	ELEVATION
0.00	0.00	300.00	5691.000	5433.500	2048.000
65.54	0.00	300.00	5634.241	5466.270	2048.001

SUMMARY LITHO LOG
PROPERTY: BELL CREEK
HOLE No.: 9174

=====

LITHO UNIT	DEPTH	EASTINGS	NORTHINGS	ELEVATION	CORE ANGLE
V13	13.65	5679.18	5440.32	2048.00	0
GREY ALT. ZD	33.10	5662.33	5450.05	2048.00	0
V13 carb	46.31	5650.89	5456.65	2048.00	0
V7	65.54	5634.24	5466.27	2048.00	0

ASSAY LOG
PROPERTY: BELL CREEK
HOLE No.: 9174

FROM	TO	WIDTH	Au ppm
21.03	21.53	0.50	0.010
21.53	22.53	1.00	0.030
22.53	23.68	1.15	0.030
33.04	34.04	1.00	NIL
34.04	35.04	1.00	NIL
35.04	36.04	1.00	NIL
36.04	37.04	1.00	NIL
37.04	38.04	1.00	NIL
45.31	46.31	1.00	NIL
46.31	47.31	1.00	NIL
47.31	47.81	0.50	NIL
47.81	48.31	0.50	0.030
48.31	48.81	0.50	0.020
48.81	49.31	0.50	NIL
49.31	49.61	0.30	0.730
49.61	50.11	0.50	5.490
50.11	50.61	0.50	1.920
50.61	51.11	0.50	0.060
51.11	51.91	0.80	NIL
51.91	52.91	1.00	NIL
52.91	53.51	0.60	0.070
63.60	64.10	0.50	NIL
64.10	64.50	0.40	NIL
64.50	65.00	0.50	NIL
65.00	65.54	0.54	NIL

AVERAGED ASSAY INTERVALS
PROPERTY: BELL CREEK
HOLE No: 9174

1. 5500 (1.30 d.t. Core Angle: 90 1.30 t.t.)

FROM:	49.31	-----	EASTINGS:	5648.30
			NORTHINGS:	5458.15
			ELEVATION:	2048.00
		3.018 Au ppm		
TO:	50.61	-----	EASTINGS:	5647.17
			NORTHINGS:	5458.80
			ELEVATION:	2048.00

MAP SYMBOLOLOGY

Aerial Cableway	Pipeline (above ground)
Boundary	Railroad
Intersecting Boundary	Single Track
District, Township, Section Boundary	Double Track
Lot, Concession, Approximate Boundary	Assessment
Part Boundary	Turbine
Road, Railroad, Building, Chimney, Cliff, Pit, Pile, Contours, Approximate Depression, Control Points	Highway, County, Township
Horizontal Control Point	Access Road of doubtful maintenance or significant driveway
Vertical Control Point	Trail, Back Road (burial, alley)
Culvert	Rapid
Falls	Reservoir
Double line river with multiple rapids	River, Stream, Canal
Fence, Hedge, Wall	Approximate location of flow
Feature Outline (Construction Features, etc.)	Rock
Flooded Land	Soil
Lock	Spot Elevation (less elevations) 300.0
Marsh or Swamp	Tower
Mud	Transmission Line
Mine Head Frame	Pit
Outcrop	Tunnel
	Utility Poles
	Wharf, Dock, Pier
	Wooded Area

AREAS WITHDRAWN FROM DISPOSITION

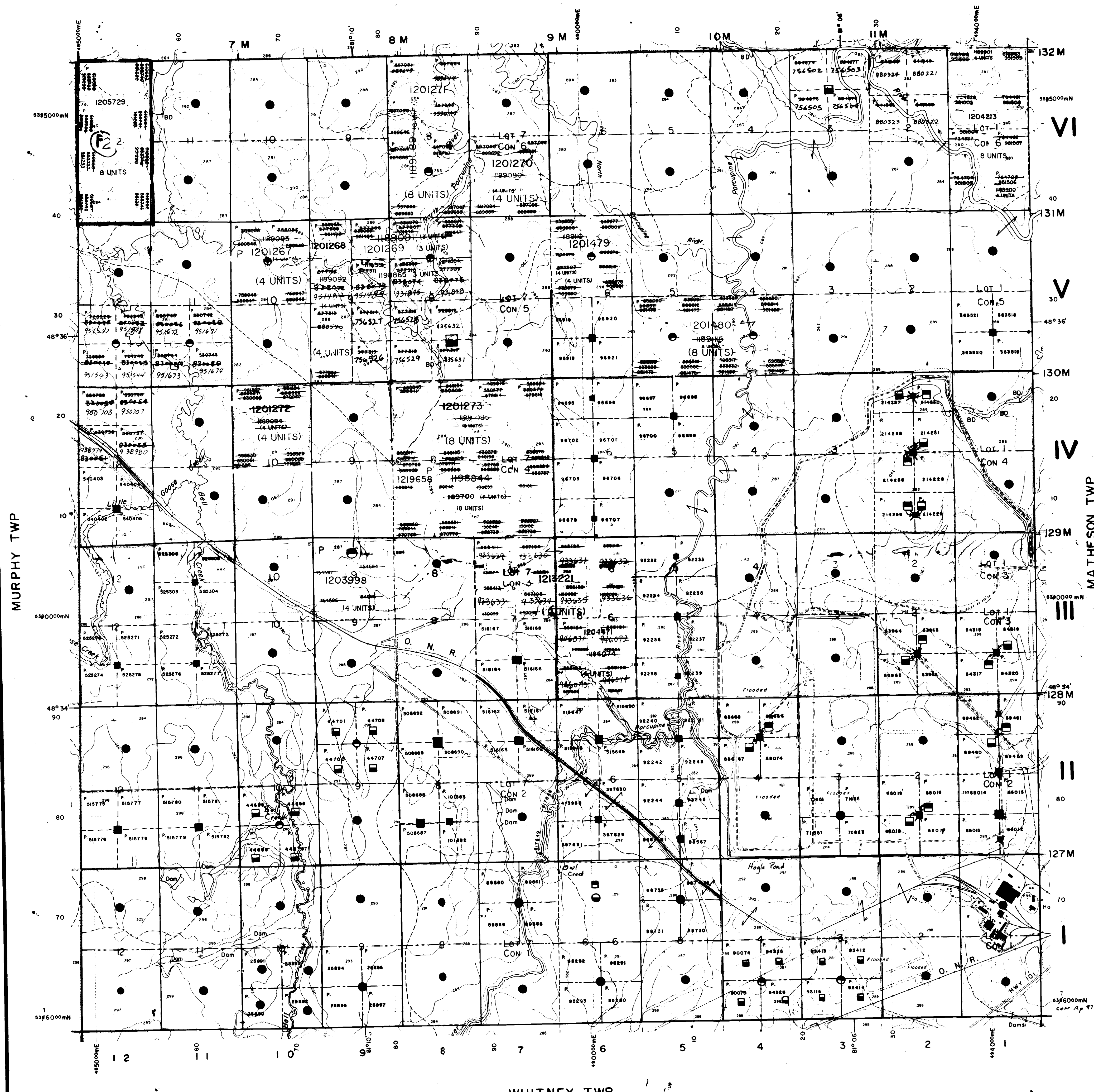
M.R.O. - MINING RIGHTS ONLY
S.R.O. - SURFACE RIGHTS ONLY
M.S. - MINING AND SURFACE RIGHTS
Order No. Date Disposition File
NRW 5/83 MRO

THIS TWP. SUBJECT TO FOREST ACTIVITY IN 1992/93 - FURTHER INFORMATION AVAILABLE ON FILE.

THIS TWP. IS SUBJECT TO FOREST ACTIVITY IN 1994/95 - FURTHER INFORMATION AVAILABLE ON FILE.

THE INFORMATION THAT APPEARS ON THIS MAP HAS BEEN COMPILED FROM VARIOUS SOURCES, AND ACCURACY IS NOT GUARANTEED. THOSE WISHING TO STAKE MINING CLAIMS SHOULD CONSULT WITH THE MINING RECORDER, MINISTRY OF NORTHERN DEVELOPMENT AND MINES, FOR AD.

GOWAN TWP



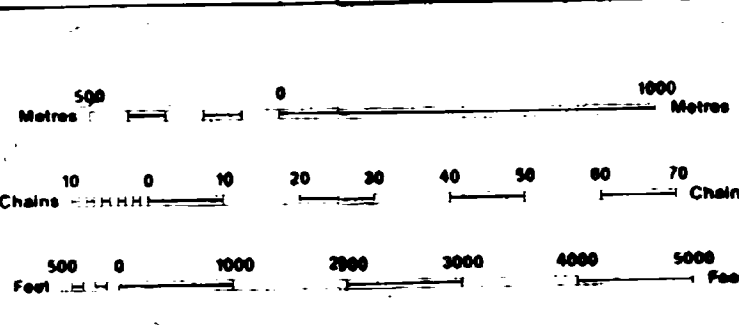
LEGEND

HIGHWAY AND ROUTE No.	OTHER ROADS
TRAILS	SURVEYED LINES
TOWNSHIPS, BASE LINES, ETC.	LOTS, MINING CLAIMS, PARCELS, ETC.
UNSURVEYED LINES	PARCEL BOUNDARY
MINING CLAIMS ETC.	RAILWAY AND RIGHT OF WAY
UTILITY LINES	NON-PERENNIAL STREAM
FLOODING OR FLOODING RIGHTS	SUBDIVISION OR COMPOSITE PLAN
RESERVATIONS	ORIGINAL SHORELINE
MARSH OR MUSKEG	MINES
TRAVERSE MONUMENT	

DISPOSITION OF CROWN LANDS

TYPE OF DOCUMENT	SYMBOL
PATENT, SURFACE & MINING RIGHTS	●
SURFACE RIGHTS ONLY	○
MINING RIGHTS ONLY	◐
LEASE, SURFACE & MINING RIGHTS	◑
SURFACE RIGHTS ONLY	◒
MINING RIGHTS ONLY	◓
LICENCE OF OCCUPATION	◔
ORDER IN COUNCIL	◕
RESERVATION	◖
CANCELLED	◗
SAND & GRAVEL	◘

NOTE: MINING RIGHTS IN PARCELS PATENTED PRIOR TO MAY 6, 1913, VESTED IN ORIGINAL PATENTEE BY THE PUBLIC LANDS ACT, R.S.O. 1978, CHAP. 300, SEC. 63, SUBSEC. 1.



NOTES

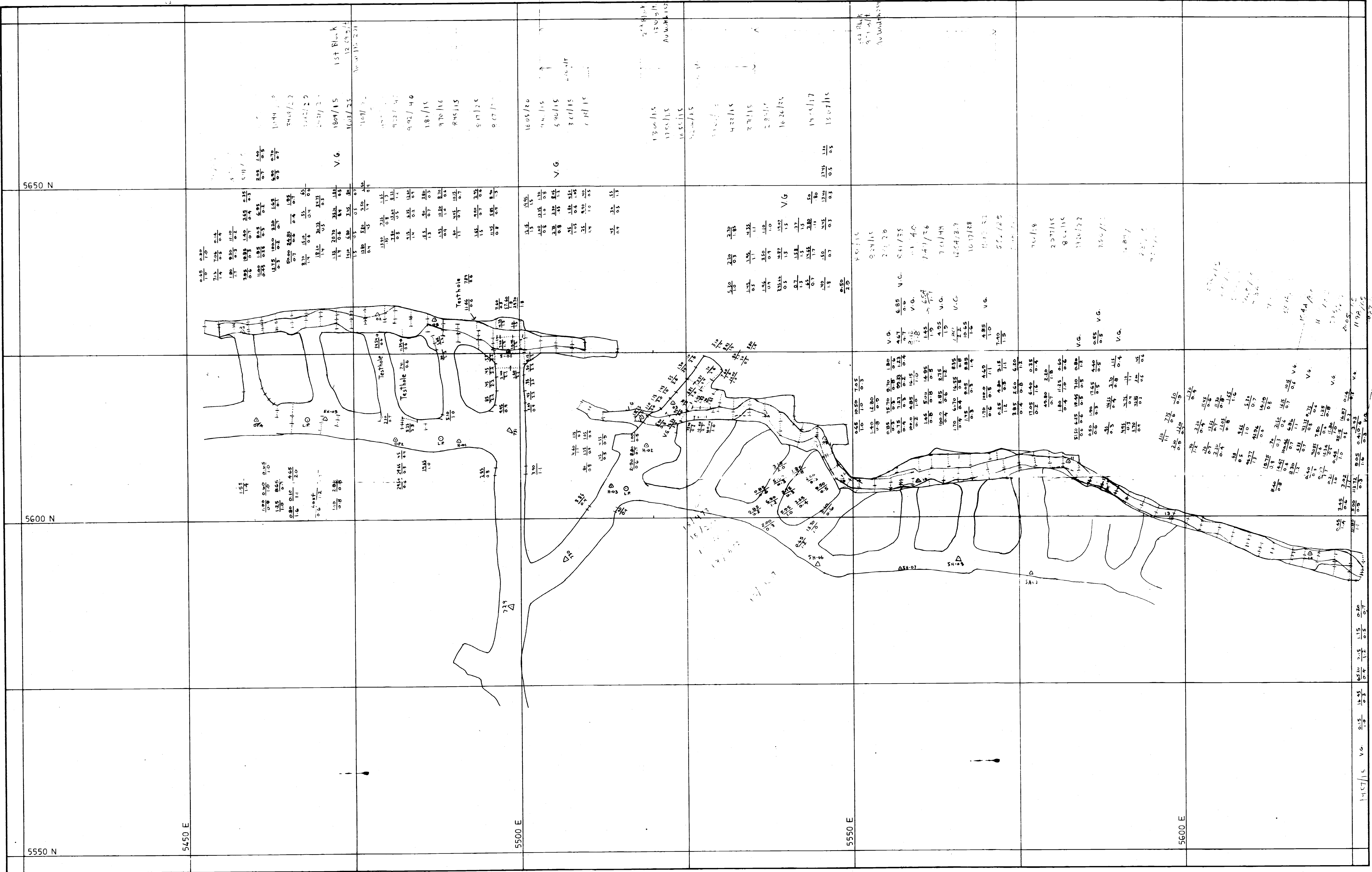
DATE OF ISSUE
MAY 29 1998
PROVINCIAL RECORDING
OFFICE - SUDBURY

TOWNSHIP
HOYLE
M.N.R. ADMINISTRATIVE DISTRICT
TIMMINS
MINING DIVISION
PORCUPINE
LAND TITLES / REGISTRY DIVISION
COCHRANE



ORIGINAL COMPILATION JULY 1984
REVISED
Number
G-3987



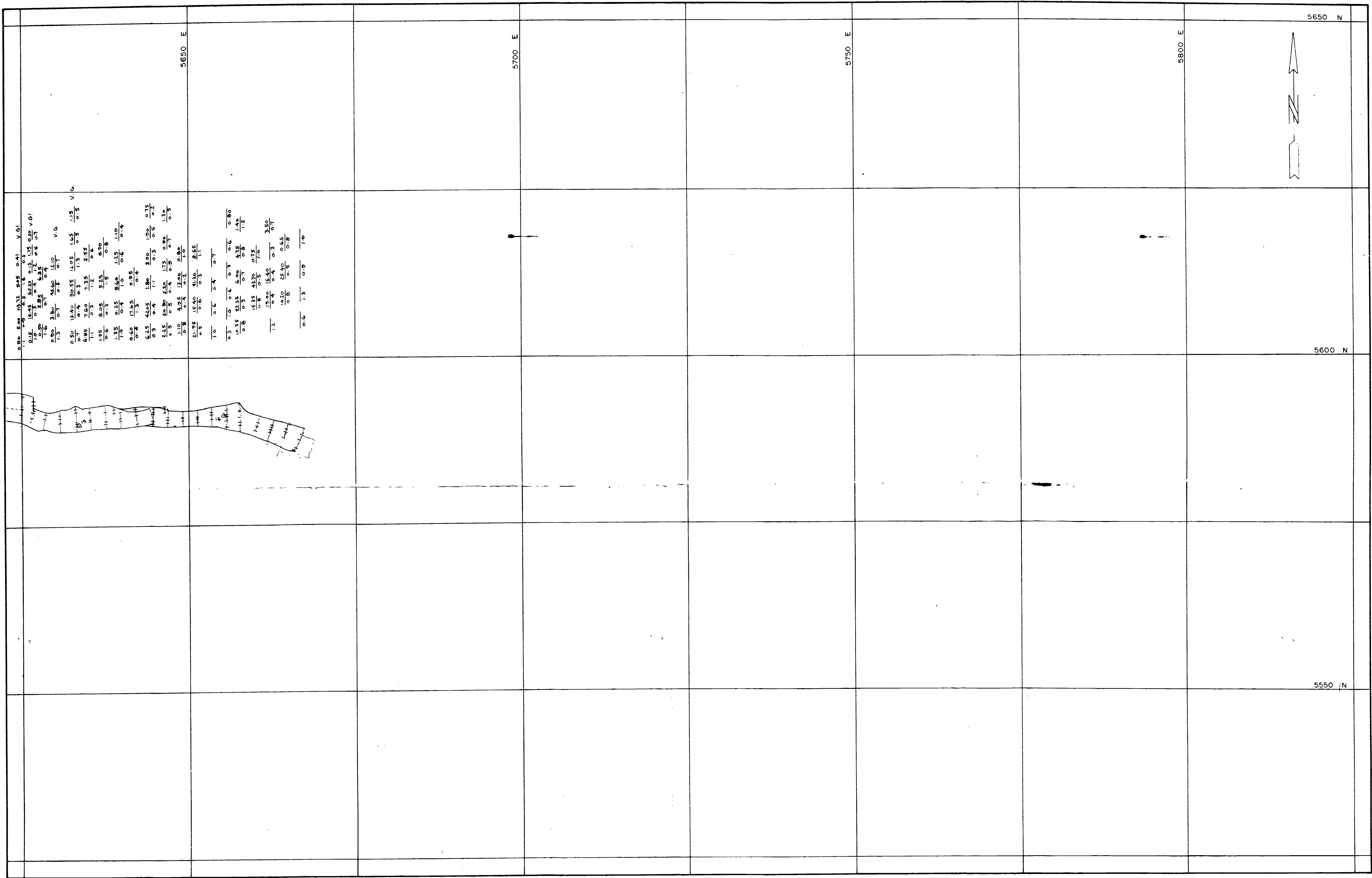


CANAMAX
RESOURCES INC.

BELL CREEK MINE

DRAWN	SUBJECT	SECTION
SCALE 1:250	ASSAY PLAN	
DATE JUNE '91	DESCRIPTION	DWG. N°
CHECKED	300 m. LEVEL - 'NORTH A'	REV
APPROVED		SHEET OF





0.88	5.88	11.72	2.85	0.41	V.G.
0.11	0.4	0.3	0.15	0.15	V.G.
0.15	0.45	0.75	0.15	0.15	V.G.
0.2	0.6	1.2	0.3	0.3	V.G.
0.25	0.75	1.5	0.35	0.35	V.G.
0.3	0.9	1.8	0.4	0.4	V.G.
0.35	1.05	2.1	0.45	0.45	V.G.
0.4	1.2	2.4	0.5	0.5	V.G.
0.45	1.35	2.7	0.55	0.55	V.G.
0.5	1.5	3.0	0.6	0.6	V.G.
0.55	1.65	3.3	0.65	0.65	V.G.
0.6	1.8	3.6	0.7	0.7	V.G.
0.65	1.95	3.9	0.75	0.75	V.G.
0.7	2.1	4.2	0.8	0.8	V.G.
0.75	2.25	4.5	0.85	0.85	V.G.
0.8	2.4	4.8	0.9	0.9	V.G.
0.85	2.55	5.1	0.95	0.95	V.G.
0.9	2.7	5.4	1.0	1.0	V.G.
0.95	2.85	5.7	1.05	1.05	V.G.
1.0	3.0	6.0	1.1	1.1	V.G.
1.05	3.15	6.3	1.15	1.15	V.G.
1.1	3.3	6.6	1.2	1.2	V.G.
1.15	3.45	6.9	1.25	1.25	V.G.
1.2	3.6	7.2	1.3	1.3	V.G.
1.25	3.75	7.5	1.35	1.35	V.G.
1.3	3.9	7.8	1.4	1.4	V.G.
1.35	4.05	8.1	1.45	1.45	V.G.
1.4	4.2	8.4	1.5	1.5	V.G.
1.45	4.35	8.7	1.55	1.55	V.G.
1.5	4.5	9.0	1.6	1.6	V.G.
1.55	4.65	9.3	1.65	1.65	V.G.
1.6	4.8	9.6	1.7	1.7	V.G.
1.65	4.95	9.9	1.75	1.75	V.G.
1.7	5.1	10.2	1.8	1.8	V.G.
1.75	5.25	10.5	1.85	1.85	V.G.
1.8	5.4	10.8	1.9	1.9	V.G.
1.85	5.55	11.1	1.95	1.95	V.G.
1.9	5.7	11.4	2.0	2.0	V.G.
1.95	5.85	11.7	2.05	2.05	V.G.
2.0	6.0	12.0	2.1	2.1	V.G.
2.05	6.15	12.3	2.15	2.15	V.G.
2.1	6.3	12.6	2.2	2.2	V.G.
2.15	6.45	12.9	2.25	2.25	V.G.
2.2	6.6	13.2	2.3	2.3	V.G.
2.25	6.75	13.5	2.35	2.35	V.G.
2.3	6.9	13.8	2.4	2.4	V.G.
2.35	7.05	14.1	2.45	2.45	V.G.
2.4	7.2	14.4	2.5	2.5	V.G.
2.45	7.35	14.7	2.55	2.55	V.G.
2.5	7.5	15.0	2.6	2.6	V.G.
2.55	7.65	15.3	2.65	2.65	V.G.
2.6	7.8	15.6	2.7	2.7	V.G.
2.65	7.95	15.9	2.75	2.75	V.G.
2.7	8.1	16.2	2.8	2.8	V.G.
2.75	8.25	16.5	2.85	2.85	V.G.
2.8	8.4	16.8	2.9	2.9	V.G.
2.85	8.55	17.1	2.95	2.95	V.G.
2.9	8.7	17.4	3.0	3.0	V.G.
2.95	8.85	17.7	3.05	3.05	V.G.
3.0	9.0	18.0	3.1	3.1	V.G.
3.05	9.15	18.3	3.15	3.15	V.G.
3.1	9.3	18.6	3.2	3.2	V.G.
3.15	9.45	18.9	3.25	3.25	V.G.
3.2	9.6	19.2	3.3	3.3	V.G.
3.25	9.75	19.5	3.35	3.35	V.G.
3.3	9.9	19.8	3.4	3.4	V.G.
3.35	10.05	20.1	3.45	3.45	V.G.
3.4	10.2	20.4	3.5	3.5	V.G.
3.45	10.35	20.7	3.55	3.55	V.G.
3.5	10.5	21.0	3.6	3.6	V.G.
3.55	10.65	21.3	3.65	3.65	V.G.
3.6	10.8	21.6	3.7	3.7	V.G.
3.65	10.95	21.9	3.75	3.75	V.G.
3.7	11.1	22.2	3.8	3.8	V.G.
3.75	11.25	22.5	3.85	3.85	V.G.
3.8	11.4	22.8	3.9	3.9	V.G.
3.85	11.55	23.1	3.95	3.95	V.G.
3.9	11.7	23.4	4.0	4.0	V.G.
3.95	11.85	23.7	4.05	4.05	V.G.
4.0	12.0	24.0	4.1	4.1	V.G.
4.05	12.15	24.3	4.15	4.15	V.G.
4.1	12.3	24.6	4.2	4.2	V.G.
4.15	12.45	24.9	4.25	4.25	V.G.
4.2	12.6	25.2	4.3	4.3	V.G.
4.25	12.75	25.5	4.35	4.35	V.G.
4.3	12.9	25.8	4.4	4.4	V.G.
4.35	13.05	26.1	4.45	4.45	V.G.
4.4	13.2	26.4	4.5	4.5	V.G.
4.45	13.35	26.7	4.55	4.55	V.G.
4.5	13.5	27.0	4.6	4.6	V.G.
4.55	13.65	27.3	4.65	4.65	V.G.
4.6	13.8	27.6	4.7	4.7	V.G.
4.65	13.95	27.9	4.75	4.75	V.G.
4.7	14.1	28.2	4.8	4.8	V.G.
4.75	14.25	28.5	4.85	4.85	V.G.
4.8	14.4	28.8	4.9	4.9	V.G.
4.85	14.55	29.1	4.95	4.95	V.G.
4.9	14.7	29.4	5.0	5.0	V.G.
4.95	14.85	29.7	5.05	5.05	V.G.
5.0	15.0	30.0	5.1	5.1	V.G.
5.05	15.15	30.3	5.15	5.15	V.G.
5.1	15.3	30.6	5.2	5.2	V.G.
5.15	15.45	30.9	5.25	5.25	V.G.
5.2	15.6	31.2	5.3	5.3	V.G.
5.25	15.75	31.5	5.35	5.35	V.G.
5.3	15.9	31.8	5.4	5.4	V.G.
5.35	16.05	32.1	5.45	5.45	V.G.
5.4	16.2	32.4	5.5	5.5	V.G.
5.45	16.35	32.7	5.55	5.55	V.G.
5.5	16.5	33.0	5.6	5.6	V.G.
5.55	16.65	33.3	5.65	5.65	V.G.
5.6	16.8	33.6	5.7	5.7	V.G.
5.65	16.95	33.9	5.75	5.75	V.G.
5.7	17.1	34.2	5.8	5.8	V.G.
5.75	17.25	34.5	5.85	5.85	V.G.
5.8	17.4	34.8	5.9	5.9	V.G.
5.85	17.55	35.1	5.95	5.95	V.G.
5.9	17.7	35.4	6.0	6.0	V.G.
5.95	17.85	35.7	6.05	6.05	V.G.
6.0	18.0	36.0	6.1	6.1	V.G.
6.05	18.15	36.3	6.15	6.15	V.G.
6.1	18.3	36.6	6.2	6.2	V.G.
6.15	18.45	36.9	6.25	6.25	V.G.
6.2	18.6	37.2	6.3	6.3	V.G.
6.25	18.75	37.5	6.35	6.35	V.G.
6.3	18.9	37.8	6.4	6.4	V.G.
6.35	19.05	38.1	6.45	6.45	V.G.
6.4	19.2	38.4	6.5	6.5	V.G.
6.45	19.35	38.7	6.55	6.55	V.G.
6.5	19.5	39.0	6.6	6.6	V.G.
6.55	19.65	39.3	6.65	6.65	V.G.
6.6	19.8	39.6	6.7	6.7	V.G.
6.65	19.95	39.9	6.75	6.75	V.G.
6.7	20.1	40.2	6.8	6.8	V.G.
6.75	20.25	40.5	6.85	6.85	V.G.
6.8	20.4	40.8	6.9	6.9	V.G.
6.85	20.55	41.1	6.95	6.95	V.G.
6.9	20.7	41.4	7.0	7.0	V.G.
6.95	20.85	41.7	7.05	7.05	V.G.
7.0	21.0	42.0	7.1	7.1	V.G.
7.05	21.15	42.3	7.15	7.15	V.G.
7.1	21.3	42.6	7.2	7.2	V.G.
7.15	21.45	42.9	7.25	7.25	V.G.
7.2	21.6	43.2	7.3	7.3	V.G.
7.25	21.75	43.5	7.35	7.35	V.G.
7.3	21.9	43.8	7.4	7.4	V.G.
7.35	22.05	44.1	7.45	7.45	V.G.
7.4	22.2	44.4	7.5	7.5	V.G.
7.45	22.35	44.7	7.55	7.55	V.G.
7.5	22.5	45.0	7.6	7.6	V.G.
7.55	22.65	45.3	7.65	7.65	V.G.
7.6	22.8	45.6	7.7	7.7	V.G.
7.65	22.95	45.9	7.75	7.75	V.G.
7.7	23.1	46.2	7.8	7.8	V.G.
7.75	23.25	46.5	7.85	7.85	V.G.
7.8	23.4	46.8	7.9	7.9	V.G.
7.85	23.55	47.1	7.95	7.95	V.G.
7.9	23.7	47.4	8.0	8.0	V.G.
7.95	23.85	47.7	8.05	8.05	V.G.
8.0	24.0	48.0	8.1	8.1	V.G.
8.05	24.15	48.3	8.15	8.15	V.G.
8.1	24.3	48.6	8.2	8.2	V.G.
8.15	24.45	48.9	8.25	8.25	V.G.
8.2	24.6	49.2	8.3	8.3	V.G.
8.25	24.75	49.5	8.35	8.35	V.G.
8.3	24.9	49.8	8.4	8.4	V.G.
8.35	25.05	50.1	8.45	8.45	V.G.
8.4	25.2	50.4	8.5	8.5	V.G.
8.45	25.35	50.7	8.55	8.55	V.G.
8.5	25.5	51.0	8.6	8.6	V.G.
8.55	25.65	51.3	8.65	8.65	V.G.
8.6	25.8	51.6	8.7	8.7	V.G.
8.65	25.95	51.9	8.75	8.75	V.G.
8.7	26.1	52.2	8.8	8.8	V.G.
8.75	26.25	52.5	8.85	8.85	V.G.
8.8	26.4	52.8	8.9	8.9	V.G.
8.85	26.55	53.1	8.95	8.95	V.G.
8.9	26.7	53.4	9.0	9.0	V.G.
8.95	26.85	53.7	9.05	9.05	V.G.
9.0	27.0	54.0	9.1	9.1	V.G.
9.05	27.15	54.3	9.15	9.15	V.G.
9.1	27.3	54.6	9.2	9.2	V.G.
9.15	27.45	54.9	9.25	9.25	V.G.
9.2	27.6	55.2	9.3	9.3	V.G.
9.25	27.75	55.5	9.35	9.35	V.G.
9.3	27.9	55.8	9.4	9.4	V.G.
9.35	28.05	56.1	9.45	9.45	V.G.
9.4	28.2	56.4	9.5	9.5	V.G.
9.45	28.35	56.7	9.55	9.55	V.G.
9.5	28.5	57.0	9.6	9.6	V.G.
9.55	28.65	57.3	9.65	9.65	V.G.
9.6	28.8	57.6	9.7	9.7	V.G.
9.65	28.95	57.9	9.75	9.75	V.G.
9.7	29.1	58.2	9.8	9.8	V.G.
9.75	29.25	58.5	9.85	9.85	V.G.
9.8	29.4	58.8	9.9	9.9	V.G.
9.85	29.55	59.1	9.95	9.95	V.G.
9.9	29.7	59.4	10.0	10.0	V.G.
9.95	29.85	59.7	10.05	10.05	V.G.
10.0	30.0	60.0	10.1	10.1	V.G.

CANAMAX
RESOURCES INC.

BELL CREEK MINE

DRAWN C.A.P.	SUBJECT ASSAY PLAN	SECTION
SCALE 1:250	DESCRIPTION	DWG. NO.
DATE AUG. '91	300 m LEVEL - 'NORTH A'	REV.
CHECKED		SHEET OF
APPROVED		
APPROVED		

