

Diamond Drilling



42A11SE0257 15 WHITNEY

010

Township of WHITNEY

Report No: 15

Work performed by: Rollex Mines Limited

Claim No	Hole No	Footage	Date	Note
P 48690	1-63	400,0'	Aug/63	

Notes:

DIAMOND DRILL RECORD

ROLLEX MINES LIMITED

Whitney Township
Ontario

~~P 48679~~
~~P 48690~~

(15) aug/63

Hole # 1 - 1963
or # 4 in series

Hole location

750' north & 130' west of post # 2 P 48690
or 61' north of C.L. road and 205' west of east boundary.

Bearing S 23° W

Dip at collar 66°

Length of hole 400'

Date started August 21st/63

Date finished August 23rd/63

Drilled by Bradley Brothers Ltd.

Noranda, P.Q.

Logged by R Massey Williams, P.Eng.

Hor distance 162.0'

Ver distance 365.0'

Hole collared at ledge

- 0 - 3.0 Casing
- 3.0 - 25.0 Fresh andesitic lavas
 - 11.0 - 13.0 whitw quartz - regional
 - 18.0 - 19.0 whitw quartz - regional
- 25.0 - 50.0 Fresh andesitic lavas
- 50.0 - 75.0 As above, scattered quartz, porphyritic form
61.0 to 75.0
- 75.0 - 100.0 As above scattered quartz @ 77.5'
85.0 to 95.0 Rather slatey
- 100.0 - 125.0 As above, 6" rose quartz @ 118.0'
115.0 to 125.0 Rather slatey
- 125.0 - 150.0 As above, white quartz 135.0 to 137.0
Some scattered porphyry phases
- 150.0 - 175.0 Medium grained dioritic lavas, fresh and unaltered
Certain slippy surfaces
- 175.0 - 200.0 The grey fresh looking dioritic phase
- 200.0 - 225.0 Andesitic lavas, fresh looking
- 225.0 - 250.0 As above, some scattered diklets of feldspar
porphyry
- 250.0 - 275.0 As above, pinkish dike at 250.0', 3" quartz @
265.0' Andesitic lavas

DIAMOND DRILL RECORD

ROLLEX MINES LIMITED

Whitney Township
Ontario

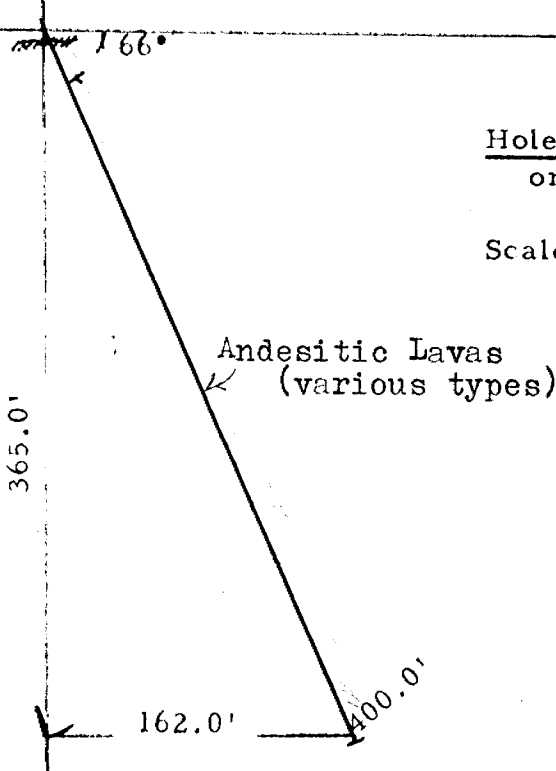
2.

- 275.0 - 300.0 Andesitic lavas, grey and fresh looking, some scattered quartz and 6" pink dike @ 300.0'
- 300.0 - 325.0 Andesitic lavas, scattered quartz, fresh with regional alteration only, some regional pyrite
- 325.0 - 350.0 As above dike quartz 326.5 to 327.0
346.0 to 347.0
- 350.0 - 375.0 Andesitic lavas, quartz rich, rather graphitic some epidote alteration
- 375.0 - 400.0 Andesitic lavas, some quartz sections and some minor schisty sections, soft and carbonated

END of HOLE



Ledge
@ Collar



Hole No. 1 - 1963
or No. 4 of this series

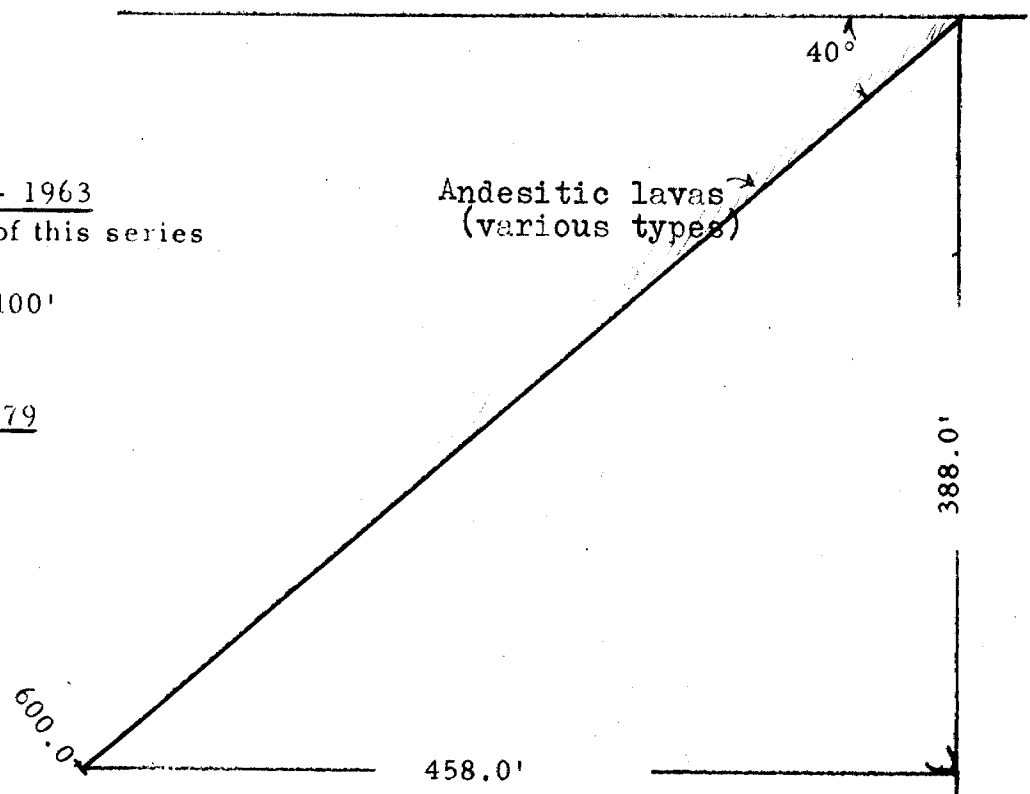
Scale 1" to 100'

Claim P 48690

Hole No. 2 - 1963
or No. 5 of this series

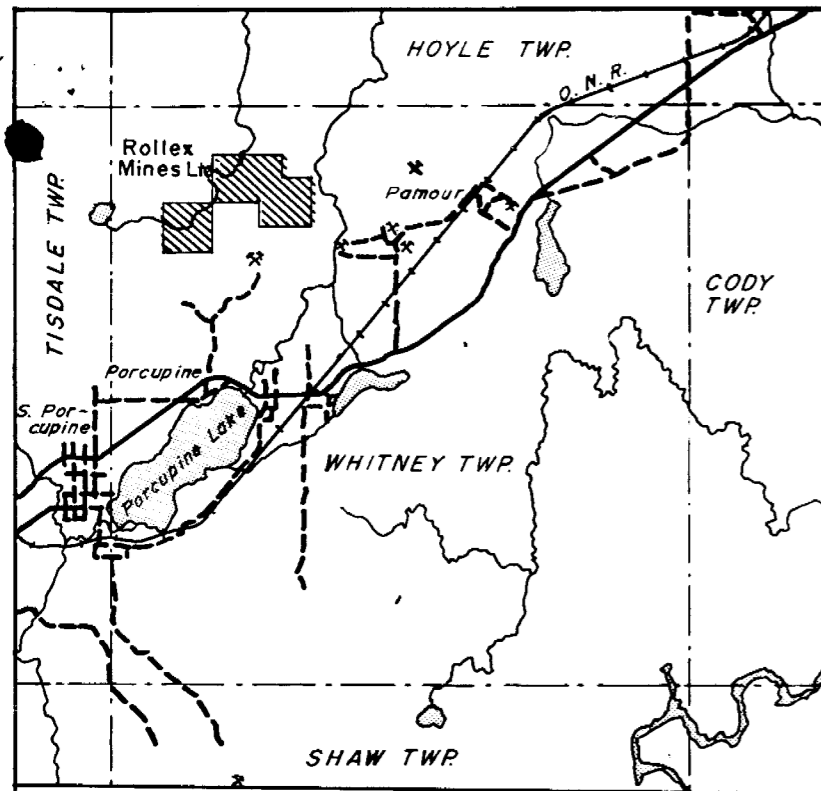
Scale 1" to 100'

Claim P 48679

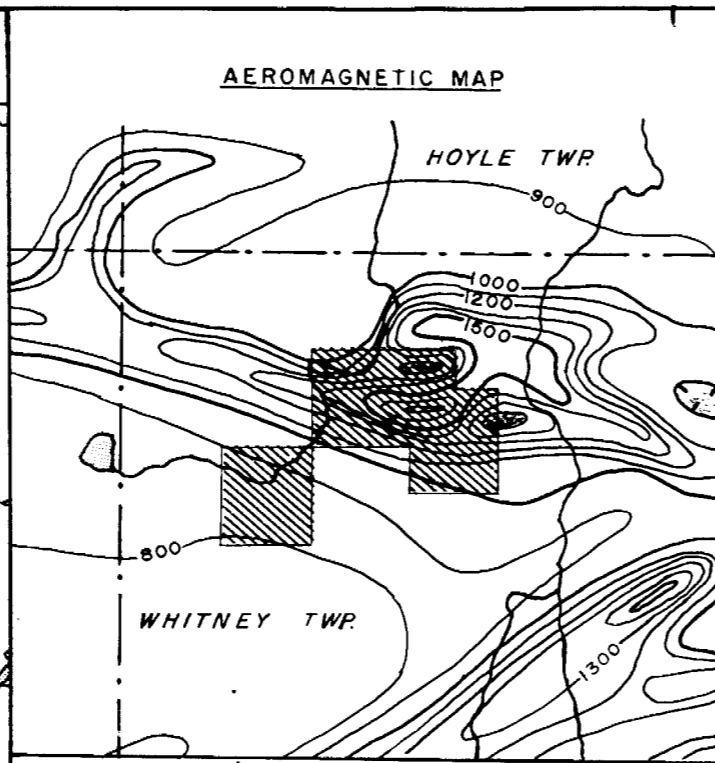


ROLLEX MINES LIMITED
Whitney Township
Ontario

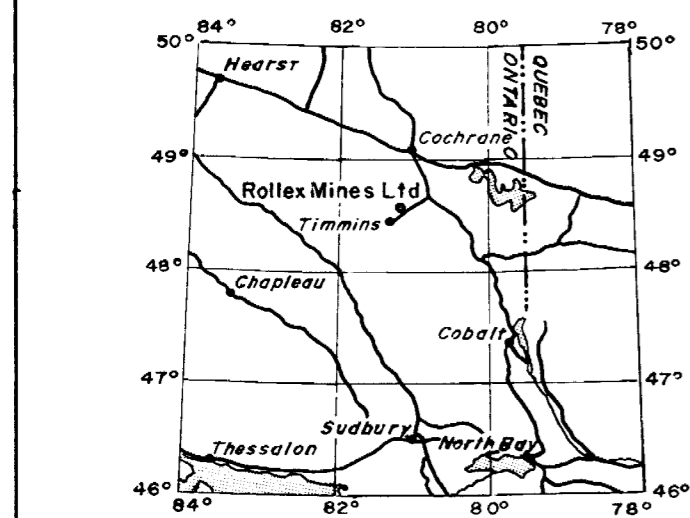
August 1963



KEY MAP
2 mi. to 1 in.



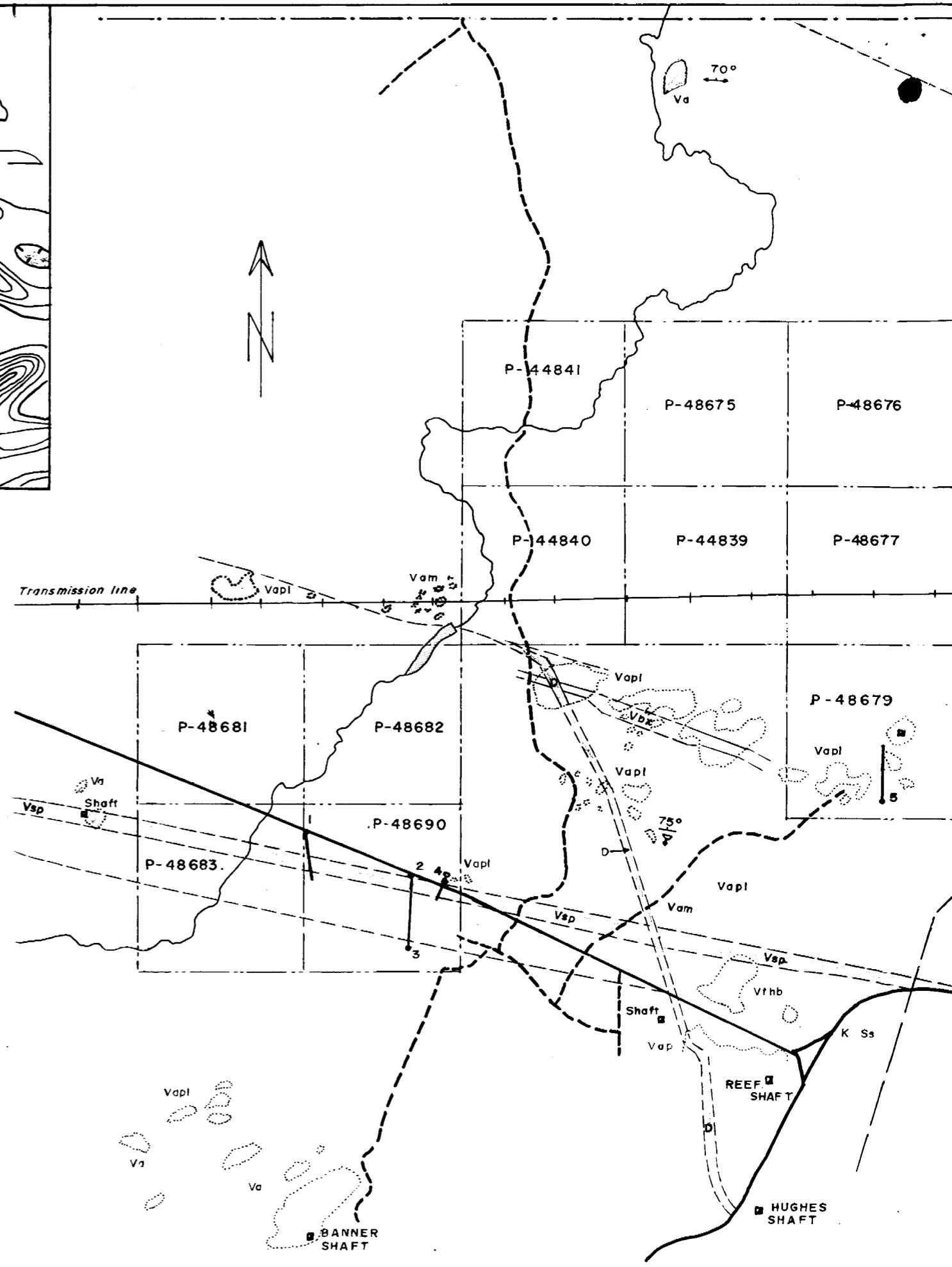
1 mile to 1 inch

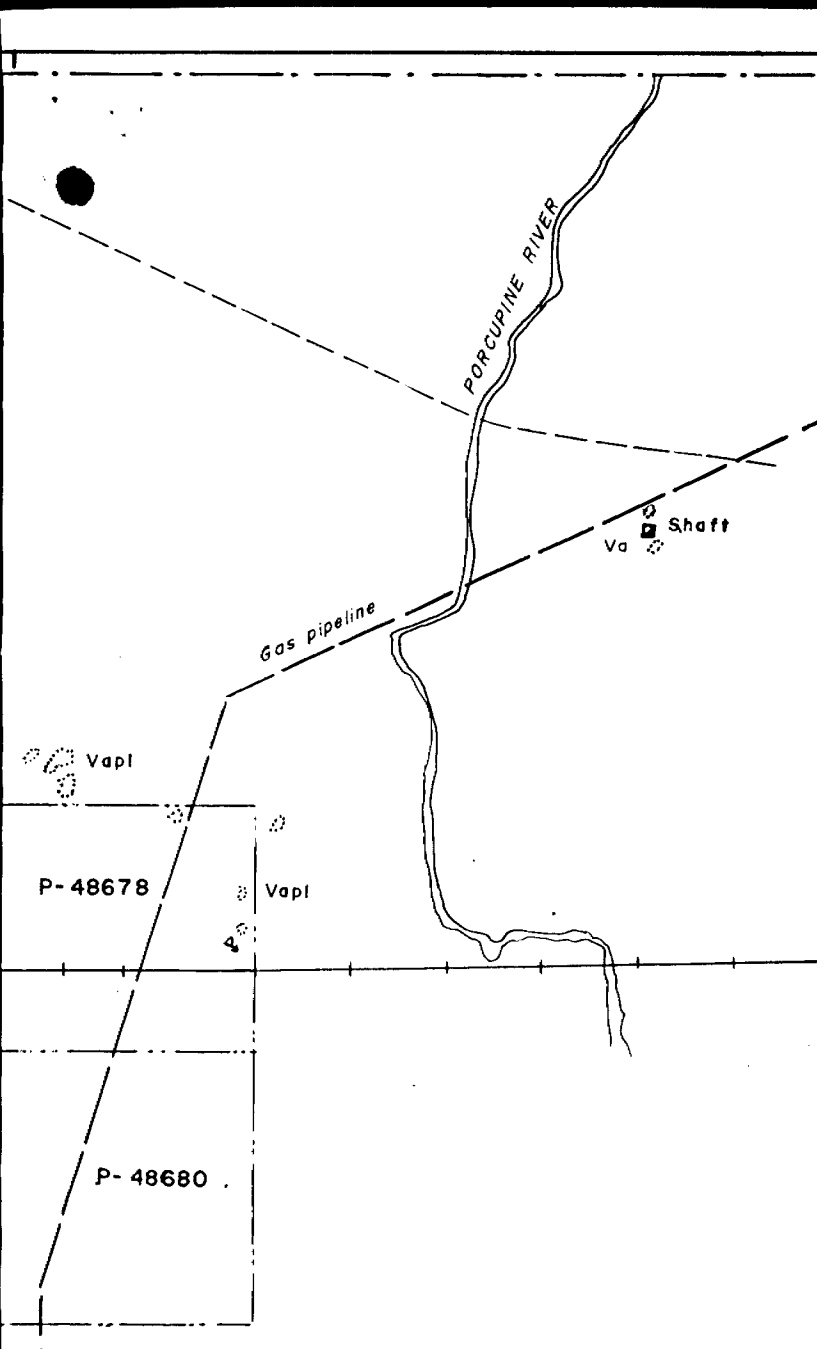


LOCATION MAP
120 mi. to 1 inch

REFERENCES

- GEOLOGY - Map 47a, 1" to 2000', O.D.M.
- Map N.W. Quarter Whitney Twp, 1" to 500', O.D.M.
- CLAIMS - Claims map Whitney Twp., 1" to 2640', O.D.M.
- AEROMAGNETIC - Map 2986, Pamour area Ontario, 1" to 1 mi, G.S.C.





LEGEND

MATACHEWAN

- DIABASE

KEEWATIN SERIES

- Slate and Argillite
- Trachyte, some Rhyolite bands: south contact with brecciated graphitic Andesite
- Variolitic (Spherulitic) Andesite. Variolitic top of central sub-group No. Vc-95 (Palagonite).
- Flow top Breccia
- Fine grained Amygdaloidal Andesite pillows
- Massive medium grained Andesite
- Undifferentiated Volcanics

- D
- K-Ss
- Vthb
- Vap
- Vbx
- Vapl
- Vam
- Va

SYMBOLS

- Shaft or pit
- Direction of lava flow tops
- Strike & dip of Schistosity
- Drill hole
- Road
- Track
- Outcrop

- Shaft or pit
- Direction of lava flow tops
- Strike & dip of Schistosity
- Drill hole
- Road
- Track
- Outcrop

NOTE

D.D. Hole No.	1	or	1	- 1961
"	"	"	2	" 2 - 1961
"	"	"	3	" 3 - 1961
"	"	"	4	" 1 - 1963
"	"	"	5	" 2 - 1963

ROLLEX MINES LIMITED

CLAIM HOLDINGS
WHITNEY TOWNSHIP
Porcupine Mining Division
Ontario

Scale 1000 ft. to 1 in.

R. Massey Williams
Professional Engineer

August 1963

