

# Vedron Gold Inc.

# Tisdale Project

Kenneth Guy Exploration Services

PROPERTY: <u>Tisdale</u>		HOLE No.: <u>04-339</u>	
Collar Northings: <u>Sect 175N</u>	Collar Eastings: <u>10mE</u>	Drilled By: <u>Norex Drilling</u>	Core Size: <u>NQ</u>
Collar Elevation: <u>3299</u>	Collar Inclination: <u>-75</u>	DOWN-HOLE SURVEY DATA	
Bearing: <u>az 144</u>	Grid: Mine Coordinates (m)	Down-hole Survey: Reflex EZ-Shot	DEPTH INCLINATION BEARING
<u>10043N / 10364.5E / ele=3299</u>	Final Depth: <u>193 metres</u>	38m -75.8 142	
Date Started: July 9, 2004	Date Finished: July 12, 2004	89m -74.7 144.6	
Claim No: P12888		188m -73.1 147.5	
		140m -74 145.9	
		Logged by: <u>Ken Guy</u>	
		Core Storage: <u>Tisdale Site</u>	

FROM (m)    TO (m)                      LITHOLOGICAL DESCRIPTION

0                      30    (OVB)  
OVERBURDEN

2.28678

30                      48    (VM,chl,ca)  
Mg Tholeiite Basalt - unaltered, chlorite, calcite

- Dark green colour
- Massive, flow
- To 41 homogenous- 41 downhole is high density of calcite veinlets,
- random orientation
- very chlorite rich

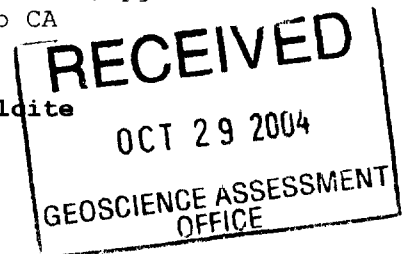
48.00                      65.00    (VM,ser,cal)  
Mg Tholeiite Basalt - altered, sericite, calcite

- Grey to grey-green colour
  - Massive to schistose at 40 to CA
  - Mostly very rich, pervasive and fractures
  - Sericite, occasional slight chlorite
  - more schistose sections are pyrite rich - 2-5%
  - many calcite veinlets, occasional veins 1-3cm parallel to schistosity at 35-40 to CA
- 51.8-59.5 more sericitic, pyrite rich fractures, py laminations in schistose rx 40 to CA

65.00                      123.5    (VM,chl,ca)  
Mg Tholeiite Basalt - unaltered, chlorite, calcite

- medium green colour
- occasional pillows, flow textured

65-70 very high density of calcite fractures



# Vedron Gold Inc.

# Tisdale Project

## Kenneth Guy Exploration Services

after 70 more massive, homogenous, flow textured, occasional pillow selvages, amygdules, very little calcite only in amygdules

- more pale green colour=fresh Mg Tholeiite
- after 90m well pillowed

107-108.5 calcite veinlets, 5% po

123.5

130.3 (VM,ser,cal)

**Mg Tholeiite Basalt - altered, sericite, calcite**

- dark grey colour
- pillowed, massive
- pervasive calcite, fg

130.3

140.6 (VM,ser,fe)

**Mg Tholeiite Basalt - altered, sericite, Fe dolomite**

- pale grey to buff colour
- 129.0-131.5 very schistose, 50 to CA, fg  
131.5-141 cg mottled, massive texture, cg Fe dolomite, plag in sericite matrix, sericite clots  
131.5 5 cm qv, 50 to CA  
134.5 2 cm qv, 40 to CA  
131.5-138.5 Komatiitic Basalt  
136.9 2 cm qv, 70 to CA  
137.5-138.5 silicified  
138.5-141 Mg Tholeiite

140.6

143.8 (QVS,s)

**Quartz Vein System - strong - greater than 70% qtz**

- 140.6-141.4 silicified, qv's, 65 to CA, qtz, ser, massive  
141.4-143 single QV, 20% assimilated host, black chlorite, 60 to CA  
143-143.8 silicified, qv, 65 to CA

143.8

152.0 (VM,ser,fe)

**Mg Tholeiite Basalt - altered, sericite, Fe dolomite**

- pale grey to buff colour
- mottled texture, schistose at 50 to CA
- cg Fe dol, plag in ser matrix- Komatiite Basalt?

152.0

169.0 (UM,altd, ser,fe)

**Ultra Mafic - altered, sericite, Fe dol**

- black to dark grey colour
- ultra mafic texture, very soft
- no distinct contacts, UM flow
- serpentine, sericite matrix with Fe dol random fractures (cooling texture) 25%
- very homogenous
- slightly magnetic

# Vedron Gold Inc.

# Tisdale Project

Kenneth Guy Exploration Services

- 169.0            188.7            (VM,ser,fe)  
                  **Mg Tholeiite Basalt - altered, sericite, Fe dolomite**
- pale grey colour
  - massive, fg, heterogenous
  - occasional schistosity at 50 to CA
  - 173.9 10cm fault gouge, 60 to CA
- 174.4-185 silicified, qv's, py
- 174.5 1cm qv, 80 to CA
  - 174.7 5 cm qv, 35 to CA, perpendicular to schistosity, 1 speck of \*\*VG\*\*
- 175.3-175.6 qv, irregular contacts, fuchsite, tr cpy,py
- 175.9 3 cm qv, random orientation, tr py
  - 177.6 8 cm qv, 45 to CA, 5% py
- 178-178.5 very silicified, qv, 3%py  
180.0-181.5 30% qtz veins, 5% py  
183-183.2 qv's, 50 to CA  
174.4-183.4 weak QVS  
187.5-188.7 calcite
- very sharp contact at 188.7 at 45 to CA
- 
- 188.7            193.0            VM,chl,ca)  
                  **Mg Tholeiite Basalt - unaltered, chlorite, calcite**
- Dark green colour
  - Massive, flow
  - very chlorite rich
- 
- 193                            End of Hole  
                                  casing left in hole

# Vedron Gold Inc.

# Tisdale Project

Kenneth Guy Exploration Services

Hole#	FROM	TO	LENGTH	SAMPLE NO.	AU(G/T)	ppbAufinal	ppbAu1
04-339	51.8	53.5	1.7	42043	0.003	3	
04-339	53.5	55.5	2.0	42044	0.003	3	
04-339	55.5	57.5	2.0	42045	0.003	3	
04-339	57.5	59.5	2.0	42046	0.003	3	
04-339	74.6	76	1.4	42047	0.003	3	
04-339	107	108.5	1.5	42048	0.025	25	
04-339	131	133	2.0	42049	0.016	16	
04-339	134.4	136.5	2.1	42050	0.013	13	
04-339	136.5	138.8	2.3	42051	0.016	16	18
04-339	138.5	140.6	2.1	42052	0.007	7	
04-339	140.6	141.4	0.8	42053	0.008	8	
04-339	141.4	143	1.6	42054	0.193	193	
04-339	143	143.8	0.8	42055	0.009	9	
04-339	143.8	145.5	1.7	42056	0.034	34	
04-339	145.5	147.5	2.0	42057	0.021	21	
04-339	149.3	151.4	2.1	42058	0.01	10	
04-339	151.4	153.5	2.1	42059	0.003	3	
04-339	156	158	2.0	42060	0.009	9	
04-339	163.3	165.3	2.0	42061	0.02	20	
04-339	170.5	172.5	2.0	42062	0.022	22	
04-339	172.5	174.4	1.9	42063	0.014	14	12
04-339	174.4	176	1.6	42064	0.47	470	
04-339	176	178	2.0	42065	0.015	15	
04-339	178	180	2.0	42066	0.104	104	
04-339	180	182	2.0	42067	0.019	19	
04-339	182	184	2.0	42068	0.013	13	
04-339	184	186	2.0	42069	0.003	3	
04-339	186	188	2.0	42070	0.009	9	



Ministry of  
Northern Development  
and Mines

Ministère du  
Développement du Nord  
et des Mines



Date: 2004-NOV-26

GEOSCIENCE ASSESSMENT OFFICE  
933 RAMSEY LAKE ROAD, 6th FLOOR  
SUDBURY, ONTARIO  
P3E 6B5

LAURION GOLD INC.  
P.O. BOX 903  
374 CRAWFORD STREET  
SOUTH PORCUPINE, ONTARIO  
P0N 1H0 CANADA

Tel: (888) 415-9845  
Fax: (877) 670-1555

**Submission Number:** 2.28678  
**Transaction Number(s):** W0460.01683

Dear Sir or Madam

**Subject: Approval of Assessment Work**

We have approved your Assessment Work Submission with the above noted Transaction Number(s). The attached Work Report Summary indicates the results of the approval.

At the discretion of the Ministry, the assessment work performed on the mining lands noted in this work report may be subject to inspection and/or investigation at any time.

If you have any question regarding this correspondence, please contact STEVEN BENETEAU by email at [steve.beneteau@ndm.gov.on.ca](mailto:steve.beneteau@ndm.gov.on.ca) or by phone at (705) 670-5855.

Yours Sincerely,

A handwritten signature in black ink that reads "Ron C Gashinski".

Ron C. Gashinski  
Senior Manager, Mining Lands Section

**Cc:** Resident Geologist

Laurion Gold Inc.  
(Claim Holder)

Kenneth Walter Guy  
(Agent)

Assessment File Library

Laurion Gold Inc.  
(Assessment Office)

Date / Time of Issue: Fri Nov 26 10:41:00 EST 2004

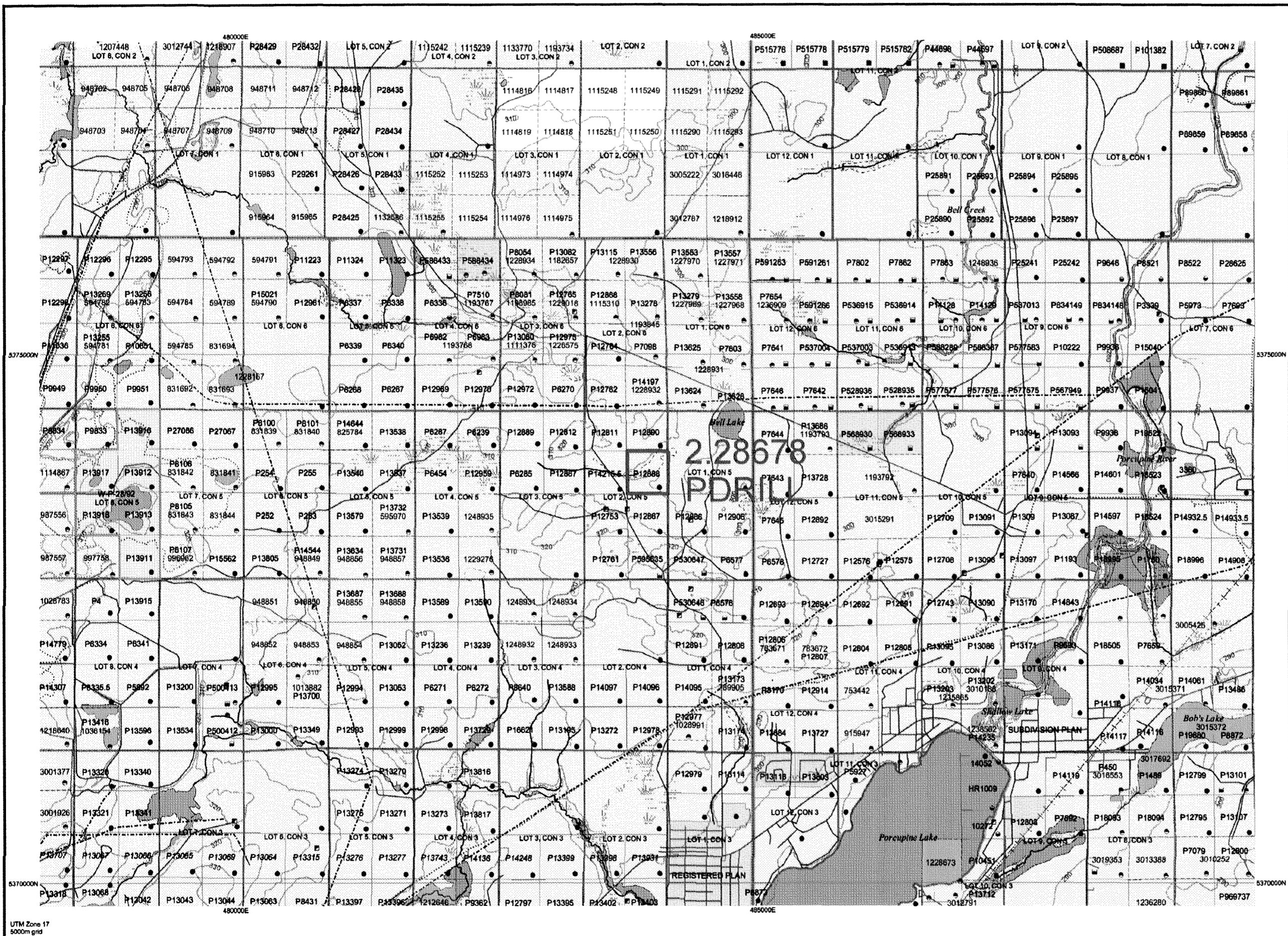
TOWNSHIP / AREA  
TISDALE

PLAN  
G-3976

ADMINISTRATIVE DISTRICTS / DIVISIONS

Mining Division  
Land Titles/Registry Division  
Ministry of Natural Resources District

Porcupine  
COCHRANE  
TIMMINS

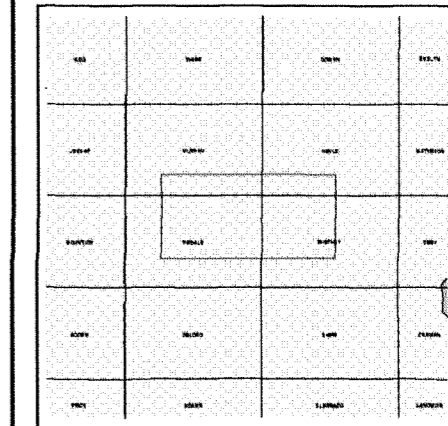


TOPOGRAPHIC

- Administrative Boundaries
- Township
- Concession, Lot
- Provincial Park
- Indian Reserve
- Cliff, Pit & Pile
- Contour
- Mine Shafts
- Mine Headframe
- Railway
- Road
- Trail
- Natural Gas Pipeline
- Utilities
- Tower

Land Tenure

- Freehold Patent**
  - Surface And Mining Rights
  - Surface Rights Only
  - Mining Rights Only
- Leasehold Patent**
  - Surface And Mining Rights
  - Surface Rights Only
  - Mining Rights Only
- Licence of Occupation**
  - Uses Not Specified
  - Surface And Mining Rights
  - Surface Rights Only
  - Mining Rights Only
- Land Use Permit**
  - Land Use Permit
- Order in Council (Not open for staking)**
  - Order in Council (Not open for staking)
- Water Power Lease Agreement**
  - Water Power Lease Agreement
- Mining Claim**
  - Mining Claim
- Filed Only Mining Claims**
  - Filed Only Mining Claims



LAND TENURE WITHDRAWALS

- Area Withdrawn from Disposition
- Mining Act Withdrawal Types**
  - Surface And Mining Rights Withdrawn
  - Surface Rights Only Withdrawn
  - Mining Rights Only Withdrawn
- Order in Council Withdrawal Types**
  - Surface And Mining Rights Withdrawn
  - Surface Rights Only Withdrawn
  - Mining Rights Only Withdrawn
- IMPORTANT NOTICES**
  - Important Notices



LAND TENURE WITHDRAWAL DESCRIPTIONS

Identifier	Type	Date	Description
3360	Wsm	Jan 1, 2001	RES
3414	Wsm	Jan 1, 2001	FLOODING RIGHTS RESERVED TO THE CROWN - DUCKS UNLIMITED - SEE LAND ROLL FILE
W-P-23/96	Wsm	May 29, 1996	THE SURFACE AND MINING RIGHTS ARE WITHDRAWN FROM PROSPECTING, STAKING OUT, SALE OR LEASE UNDER SECTION 35 OF THE MINING ACT RSO 1990, DATED MAY 29, 1996 AT 2:11 PM ORDER NO. W-P-23/96 NER
W-P-28/92	Ws	May 27, 1992	MINING RIGHTS ONLY WITHDRAWN FROM PROSPECTING, STAKING OUT, SALE OR LEASE UNDER SECTION 35 OF THE MINING ACT RSO 1990 DATED 92-MAY-27 AT 13:20 E.S.T. ORDER NO. W-P-28/92 NER

UTM Zone 17  
5000m grid

For Northern Development and Mines for additional information determination purposes as the information information may also be obtained through the

General Information and Limitations  
Contact information:  
Provincial Mining Recorders' Office  
Wildcat Green Miller Centre 933 Ramsey Lake Road  
Sudbury ON P3E 6B5  
Home Page: www.mndm.gov.on.ca/MNDMMINES/LANDS/mlsmpg.htm

Toll Free  
Tel: 1 (888) 415-9845 ext 5777  
Fax: 1 (877) 670-1444

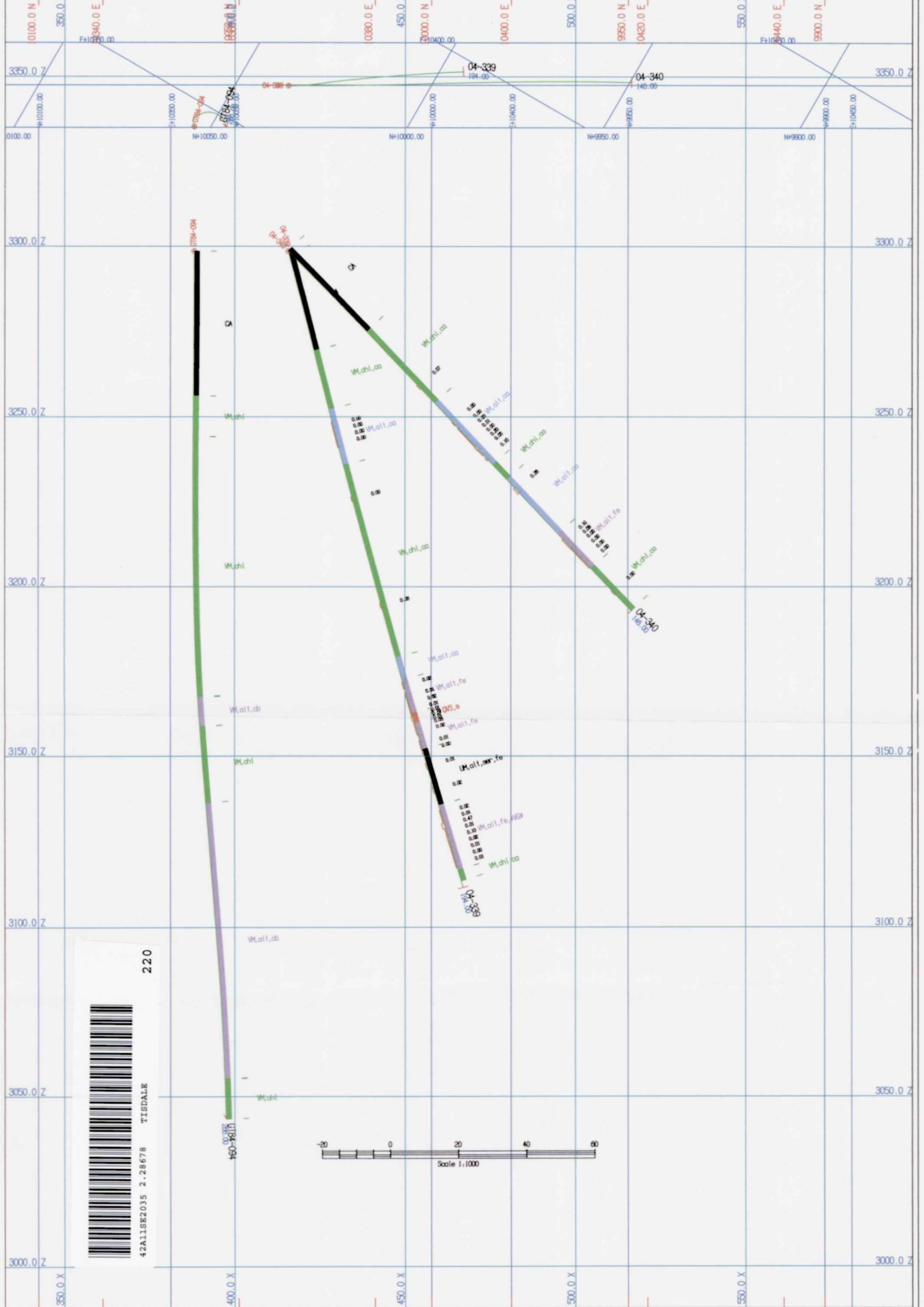
Map Datum: NAD 83  
Projection: UTM (6 degree)  
Topographic Data Source: Land Information Ontario  
Mining Land Tenure Source: Provincial Mining Recorders' Office

This map may not show unregistered land tenure and interests in land including certain patents, leases, easements, right of ways, flooding rights, licences, or other forms of disposition of rights and interest from the Crown. Also certain land tenure and land uses that restrict or prohibit free entry to stake mining claims may not be illustrated.

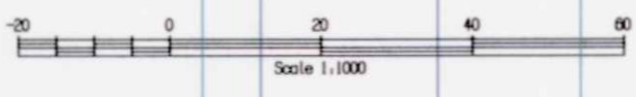








220



Section = 175N  
 1:1000  
 VEDRON GOLD INC.  
 TISDALE PROJECT

UNITS : METRES DATE: 04/10/22 TIME: 15:22:36

Software by Geosoft Software International