



42A11SW0310 11 MOUNTJOY

Diamond Drill.

010

Township of MOUNTJOY

Report No: 11

Work performed by: Kerr Addison Mines Limited

Claim No	Hole No	Footage	Date	Note
<u>Concession III</u>				
Lot 6 (N ₂)	3-6-1	89'	Feb/74	(1) (2)
	3-6-2	92'	Feb/74	(1) (2)
	3-6-7	107'	Feb/74	(1) (2)
	3-6-8	107'	Feb/74	(1) (2)
Lot 7 (N ₂)	3-7-1	122'	Mar/74	(1) (2)
	3-7-2	104'	Mar/74	(1) (2)
	3-7-7	92'	Mar/74	(1) (2)
	3-7-8	32'	Mar/74	(1) (2)
Lot 8 (N ₂)	3-8-1	47'	Mar/74	(1) (2)
	3-8-2	117'	Mar/74	(1) (2)
	3-8-7	57'	Mar/74	(1) (2)
	3-8-8	32'	Mar/74	(1) (2)
Lot 9 (N ₂)	3-9-1	35'	Mar/74	(1) (2)
	3-9-2	59'	Mar/74	(1) (2)
	3-9-7	71'	Mar/74	(1) (2)
	3-9-8	43'	Mar/74	(1) (2)

Notes:

16

Diamond Drilling

Township of MOUNTJOY

Report NO: JJ

Work performed by:

Claim NO	Hole NO	Footage	Date	Note
<u>Concession III</u>				
Lot 10 (N ₂) (N ₂)	3-10-1	62.5'	Mar/74	(1) (2)
	3-10-8	118'	Mar/74	(1) (2)
<u>Concession IV</u>				
Lot 6 (N ₂)	4-6-1	74'	Mar/74	(1) (2)
	4-6-2	75'	Mar/74	(1) (2)
	4-6-7	66'	Mar/74	(1) (2)
	4-6-8	69'	Mar/74	(1) (2)
Lot 6 (S ₂)	4-6-3	72'	Mar/74	(1) (2)
	4-6-4	77'	Mar/74	(1) (2)
	4-6-5	96.5'	Mar/74	(1) (2)
	4-6-6	93'	Mar/74	(1) (2)
Lot 7 (N ₂)	4-7-1	85'	Mar/74	(1) (2)
	4-7-2	117'	Mar/74	(1) (2)
	4-7-7	80'	Mar/74	(1) (2)
	4-7-8	86'	Mar/74	(1) (2)

Notes:

14

Diamond Drilling

Township of MOUNTJOY

Report N^o: JJ

Work performed by:

Claim N ^o	Hole N ^o	Footage	Date	Note
<u>Concession IV</u>				
Lot 7 (S ₂)	4-7-3	108'	Mar/74	(1) (2)
	4-7-4	66.5'	Mar/74	(1) (2)
	4-7-5	87'	Mar/74	(1) (2)
	4-7-6	66'	Mar/74	(1) (2)
Lot 8 (N ₂)	4-8-1	54'	Mar/74	(1) (2)
	4-8-2	60'	Mar/74	(1) (2)
	4-8-7	45'	Mar/74	(1) (2)
	4-8-8	39.5'	Mar/74	(1) (2)
P 381611	4-8-3	48'	Mar/74	(1) (2)
P 381613	4-8-4	49'	Mar/74	(1) (2)
P 381612	4-8-5	41'	Mar/74	(1) (2)
P 381610	4-8-6	27'	Mar/74	(1) (2)
Lot 9 (N ₂)	4-9-1	70'	Mar/74	(1) (2)
	4-9-2	58'	Mar/74	(1) (2)
	4-9-7	45'	Mar/74	(1) (2)
Notes:	4-9-8	36'	Mar/74	(1) (2)

16

Diamond Drilling

Township of MOUNTJOY

Report No. JJ

Work performed by:

Claim No	Hole No	Footage	Date	Note
<u>Concession IV</u>				
Lot 9 (S $\frac{1}{2}$)	4-9-3	35'	Mar/74	(1) (2)
	4-9-4	19.5'	Mar/74	(1) (2)
	4-9-5	61.5	Mar/74	(1) (2)
	4-9-6	40'	Mar/74	(1) (2)
Lot 10 (N $\frac{1}{2}$)	4-10-1	65.5'	Mar/74	(1) (2)
	4-10-2	85'	Mar/74	(1) (2)
	4-10-7	93'	Mar/74	(1) (2)
	4-10-8	111'	Mar/74	(1) (2)
Lot 10 (S $\frac{1}{2}$)	4-10-3	88'	Mar/74	(1) (2)
	4-10-4	63'	Mar/74	(1) (2)
	4-10-5	98'	Mar/74	(1) (2)
	4-10-6	60'	Mar/74	(1) (2)
Lot 11 (S $\frac{1}{2}$) (N $\frac{1}{2}$)	4-11-2	102'	Mar/74	(1) (2)
	4-11-7	41.5'	Mar/74	(1) (2)
<u>Concession V</u>				
Lot 6 (N $\frac{1}{2}$)	5-6-2	41'	Mar/74	(1) (2)
	5-6-7	58'	Mar/74	(1) (2)
	5-6-8	57'	Mar/74	(1) (2)

17

Diamond Drilling

Township of MOUNTJOY

Report N^o: JJ

Work performed by:

Claim N ^o	Hole N ^o	Footage	Date	Note
<u>Concession V</u>				
P 381619	5-6-3	53'	Mar/74	(1) (2)
P 381621	5-6-4	48'	Mar/74	(1) (2)
P 381620	5-6-5	66'	Mar/74	(1) (2)
P 381618	5-6-6	56'	Mar/74	(1) (2)
Lot 7 (N $\frac{1}{2}$)	5-7-1	78'	Mar/74	(1) (2)
	5-7-2	78'	Mar/74	(1) (2)
	5-7-7	68'	Mar/74	(1) (2)
	5-7-8	52'	Mar/74	(1) (2)
Lot 7 (S $\frac{1}{2}$)	5-7-3	69'	Mar/74	(1) (2)
	5-7-4	80'	Mar/74	(1) (2)
	5-7-5	48.5'	Mar/74	(1) (2)
	5-7-6	60.5'	Mar/74	(1) (2)
Lot 8 (N $\frac{1}{2}$)	5-8-1	102'	Mar/74	(1) (2)
	5-8-2	96'	Mar/74	(1) (2)
	5-8-7	81'	Mar/74	(1) (2)
	5-8-8	94'	Apr/74	(1) (2)
Notes:				

16

Diamond Drilling

Township of MOUNTJOY

Report NO: 11

Work performed by:

<u>Claim NO</u> <u>Concession V</u>	<u>Hole NO</u>	<u>Footage</u>	<u>Date</u>	<u>Note</u>
P 381616	5-8-3	93'	Mar/74	(1) (2)
P 381617	5-8-4	78'	Mar/74	(1) (2)
P 381614	5-8-5	70'	Mar/74	(1) (2)
P 381615	5-8-6	52'	Mar/74	(1) (2)
Lot 10 (S $\frac{1}{2}$)	5-10-3	42'	Mar/74	(1) (2)
	5-10-4	78'	Mar/74	(1) (2)
	5-10-5	57'	Apr/74	(1) (2)
<u>Concession VI</u>				
Lot 7 (S $\frac{1}{2}$)	6-7-4	45'	Mar/74	(1) (2)

8

87 DDH / 6041'

Notes: (1) 233/74 - Overburden (Basal Till) Drilling - See 2.1689 for additional information.

(2) See Mountjoy #12 for hole locations.

Jessop Twp.

THE TOWNSHIP OF
OF

MOUNT JOY

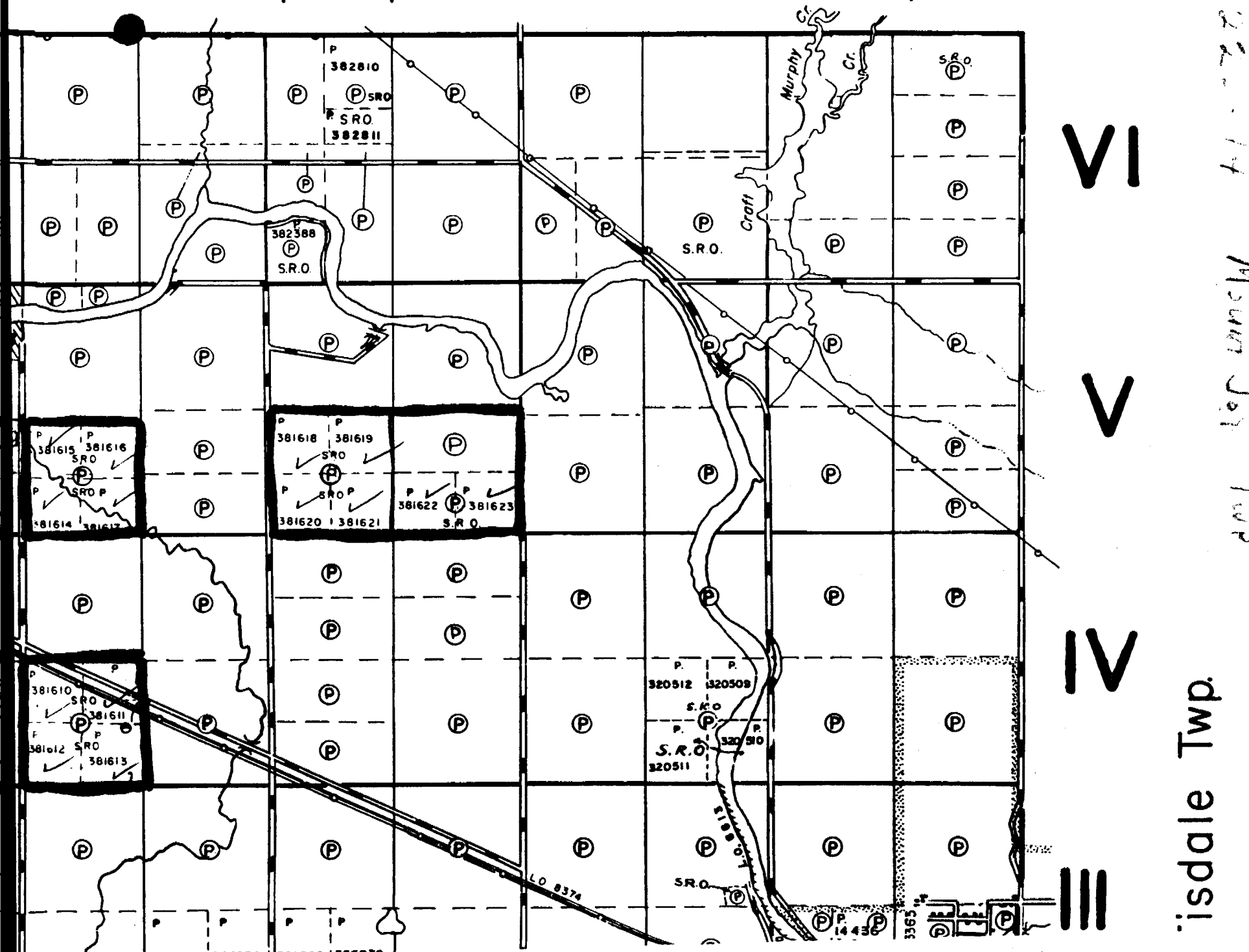
DISTRICT OF
COCHRANE

PORCUPINE
MINING DIVISION

SCALE: 1-INCH=40 CHAINS

LEGEND

- | | |
|-----------------------|--------------|
| PATENTED LAND | (P) |
| CROWN LAND SALE | (S) or (C.S) |
| LEASES | (L) |
| LOCATED LAND | Loc |
| LICENSE OF OCCUPATION | L.O. |
| MINING RIGHTS ONLY | M.R.O. |
| SURFACE RIGHTS ONLY | S.R.O. |
| ROADS | — |
| IMPROVED ROADS | — |
| KINGS HIGHWAYS | — |
| RAILWAYS | — |
| POWER LINES | — |
| MARSH OR MUSKEG | — |
| MINES | — |
| GEODECTIC STATION | — |
| WATER POWER LEASE | W.P.L. |



Isdale Twp.

DIAMOND DRILL RECORD

LOGGED BY G. Hines & D. M. Hendrick *G. Hines*

PROPERTY Karen Smith, North 1/2 of North 1/2, Lot 7, Concession III, Mountjoy Township, Ontario

D.D.H. No. III-7-1 PAGE 1

LATITUDE _____ BEARING OF HOLE _____ STARTED Mar. 1/74 12:25 P.M.

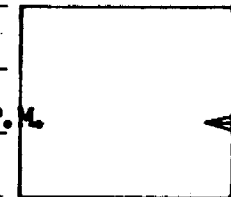
CLAIM No. East 1/2 of lot

DEPARTURE _____ DIP OF HOLE Vertical COMPLETED Mar. 1/74 2:30 P.M.

DIRECTION AND DISTANCE FROM

ELEVATION _____ DIP TESTS _____ DEPTH 122.0 feet

NE. CLAIM POST



Overburden Hole Record

FOOTAGE		DESCRIPTION	SAMPLE No.	FOOTAGE		SAMPLE LENGTH	ASSAY				
FROM	TO			FROM	TO		Ag	As	Cu	Zn	
0.0	92.0	Clay					p.p.b.	p.p.m.	p.p.m.	p.p.m.	
92.0	100.5	Sand									
100.5	116.0	Gravel	79	105.0	116.0	11.0'	<5	18	108	185	HV
116.0	120.0	Bedrock?	80	116.0	122.0	6.0'	5	2	13	130	
120.0	122.0	Bedrock									
	122.0	End of Hole									

Au = Gold
 As = Arsenic
 Cu = Copper
 Zn = Zinc
 p.p.m. = parts per million
 p.p.b. = parts per billion
 HV = Heavy mineral fraction
 N.D. = Not Detected
 I.S. = Insufficient Sample

DIAMOND DRILL RECORD

LOGGED BY G. Hines & D. M. Hendrick G. Hines

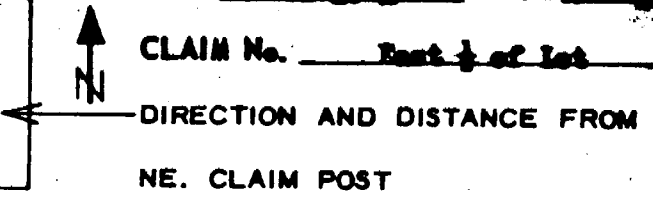
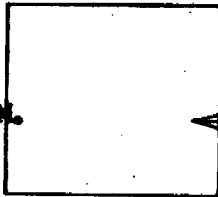
PROPERTY J. Lohme, North 1/2 of North 1/2, Lot 10, Concession III, Mountjoy Township, Ontario

D.D.H. No. 221-30-2 PAGE 1

LATITUDE _____ BEARING OF HOLE _____ STARTED Mar. 5/74 3:45 P.M.

DEPARTURE _____ DIP OF HOLE Vertical COMPLETED Mar. 5/74 5:00 P.M.

ELEVATION _____ DIP TESTS _____ DEPTH 62.5 feet



Overburden Hole Record

FOOTAGE		DESCRIPTION	SAMPLE No.	FOOTAGE		SAMPLE LENGTH	ASSAY			
FROM	TO			FROM	TO		Au	As	Cu	Zn
0.0	37.0	Clay								
37.0	41.0	Clay, no rejects								
41.0	47.5	Gravel								
47.5	49.5	One boulder								
49.5	59.5	Clay and gravel	104	49.5	59.5	10.0'	N.D.	5	60	270
59.5	62.5	Bedrock, lost water	105	59.5	62.5	3.0'	<5	2	20	53
	62.5	End of Hole								

Au = Gold
 As = Arsenic
 Cu = Copper
 Zn = Zinc
 P.P.M. = parts per million
 P.P.B. = parts per billion
 HV = Heavy mineral fraction
 N.D. = Not Detected

DIAMOND DRILL RECORD

LOGGED BY G. Hines & D. H. Hendrick

G. Hines

D.D.H. No. IV-10-3 PAGE 2

PROPERTY Whissell, East 1/4 of South 1/4, Lot 20, Concession IV, Mountjoy Township, Ontario

LATITUDE _____ BEARING OF HOLE _____ STARTED Mar. 7/76 10:00 A.M.

DEPARTURE _____ DIP OF HOLE Vertical COMPLETED Mar. 7/76 12:45 P.M.

ELEVATION _____ DIP TESTS _____ DEPTH 88.0 feet



CLAIM No. North 1/4 of East 1/4 of Lot

DIRECTION AND DISTANCE FROM

NE. CLAIM POST

Overburden Hole Record

FOOTAGE		DESCRIPTION	SAMPLE No.	FOOTAGE		SAMPLE LENGTH	ASSAY				
FROM	TO			FROM	TO		Ag	Ap	Cu	Zn	
0.0	26.0	Clay									
						P.P.B.	P.P.M.	P.P.M.	P.P.M.		
26.0	34.0	Clay and gravel									
34.0	63.0	Coarse gravel									
63.0	71.0	Clay and sand									
71.0	86.0	Till									
			3	75.0	79.0	4.0'	20	11	90	625	HV
86.0	88.9	Bedrock									
			4	79.0	83.0	4.0'	200	5	55	300	HV
			5	83.0	86.0	3.0'	30	1	110	130	HV
			6	86.0	88.0	2.0'	10	N.D.	183	96	

P.P.M. = parts per million
 P.P.B. = parts per billion
 HV = Heavy Mineral Fraction
 N.D. = Not Detected

DIAMOND DRILL RECORD

LOGGED BY G. Hines & D. M. Hendrick

G. Hines

PROPERTY L. Levesque, North 1/2 of South 1/2, Lot 9, Concession IV, Mountjoy Township, Ontario

D.D.H. No. IV-9-6 PAGE 1

LATITUDE _____ BEARING OF HOLE _____ STARTED Mar. 7/74 1:25 P.M.

DEPARTURE _____ DIP OF HOLE Vertical COMPLETED Mar. 7/74 2:05 P.M.

ELEVATION _____ DIP TESTS _____ DEPTH 40.0 feet



CLAIM No. West 1/2 of Lot

DIRECTION AND DISTANCE FROM

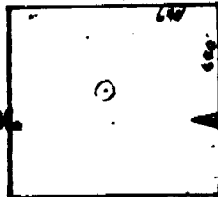
NE. CLAIM POST

Overburden Hole Record

FOOTAGE		DESCRIPTION	SAMPLE No.	FOOTAGE		SAMPLE LENGTH	ASSAY			
FROM	TO			FROM	TO		Ag	As	Cu	Zn
0.0	29.0	Clay								
29.0	37.0	Clay and gravel	7	33.0	37.0	4.0'	60	3	73	85 HV
37.0	40.0	Bedrock	8	37.0	40.0	3.0'	20	N.D.	8	33
	40.0	End of Hole								

- Ag = Gold
- As = Arsenic
- Cu = Copper
- Zn = Zinc
- P.P.M. = parts per million
- P.P.B. = parts per billion
- HV = Heavy Mineral Fraction
- N.D. = Not Detected

DIAMOND DRILL RECORD

LOGGED BY G. Hines & R. M. Hendrick G. HinesPROPERTY A. Larnit, North 1/2 of South 1/2, Lot 6, Concession IV, Manitowish Township, OntarioD.D.H. No. IV-8-6 PAGE 1
 LATITUDE _____ BEARING OF HOLE _____ STARTED Mar. 7/76 4:00 P.M.
 DEPARTURE _____ DIP OF HOLE Vertical COMPLETED Mar. 7/76 4:30 P.M.
 ELEVATION _____ DIP TESTS _____ DEPTH 27.0 feet

 CLAIM No. 381630
West 1/2 of Lot
 DIRECTION AND DISTANCE FROM
 NE. CLAIM POST

Concession Hole Record

FOOTAGE		DESCRIPTION	SAMPLE No.	FOOTAGE		SAMPLE LENGTH	ASSAY				
FROM	TO			FROM	TO		Au	Ag	Cu	Zn	
0.0	24.0	Clay									
24.0	25.0	Gravel	11	24.0	25.0	1.0'	80	20	105	118	NV
25.0	27.0	Bedrock	12	25.0	27.0	2.0'	30	11	50	88	
	27.0	End of Hole									

Au = Gold
 Ag = Arsenic
 Cu = Copper
 Zn = Zinc
 P.P.M. = parts per million
 P.P.B. = parts per billion
 NV = Heavy Mineral Fraction
 E.D. = Not Detected

DIAMOND DRILL RECORD

LOGGED BY G. Hulse & D. M. Hendrick

7-2-5

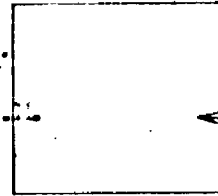
PROPERTY H. Lemmerl, South 1/2 of South 1/4, Lot 7, Concession IV, Mountjoy Township, Ontario

D.D.H. No. 7-2-5 PAGE 1

LATITUDE _____ BEARING OF HOLE _____ STARTED Mar. 3/74 10:10

DEPARTURE _____ DIP OF HOLE Vertical COMPLETED Mar. 3/74 11:00

ELEVATION _____ DIP TESTS _____ DEPTH 87.0 feet



CLAIM No. West 1 of Lot
DIRECTION AND DISTANCE FROM
NE. CLAIM POST

Overburden Hole Record

FOOTAGE		DESCRIPTION	SAMPLE No.	FOOTAGE		SAMPLE LENGTH	ASSAY						
FROM	TO			FROM	TO		'g	's	'n	'n			
0.0	31.0	Clay											
31.0	83.0	Till, lost water	17	81.0	83.0	2.0'	190		100	175			
83.0	87.0	Bedrock	18	83.0	87.0	4.0'	15	11	50	74			
	87.0	End of hole											

Au = Gold
As = Arsenic
Cu = Copper
Zn = Zinc
p.p.m. = parts per million
p.p.b. = parts per billion
HV = Heavy Mineral Fraction

DIAMOND DRILL RECORD

LOGGED BY G. Hines & D. M. Hendrick *G. Hines*

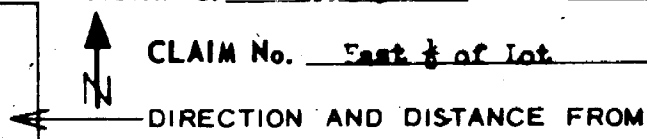
PROPERTY T. Legault, North 1/2 of South 1/2, Lot 6, Concession IV, Mountjoy Township, Ontario

D.D.H. No. IV-6-3 PAGE 1

LATITUDE _____ BEARING OF HOLE _____ STARTED Mar. 11/74 9:00 A.M.

CLAIM No. East 1/2 of Lot

DEPARTURE _____ DIP OF HOLE Vertical COMPLETED Mar. 11/74 11:30 A.M.



DIRECTION AND DISTANCE FROM

ELEVATION _____ DIP TESTS _____ DEPTH 72.0 feet

NE. CLAIM POST

Overburden Hole Record

FOOTAGE		DESCRIPTION	SAMPLE No.	FOOTAGE		SAMPLE LENGTH	ASSAY			
FROM	TO			FROM	TO		Au	Ag	Cu	
0.0	29.0	Clay					p.p.b.	p.p.m.	p.p.m.	p.p.m.
29.0	33.0	Gravel								
33.0	37.0	Clay and gravel								
37.0	49.0	Gravel								
49.0	53.0	Gravel and boulders								
53.0	57.0	Gravel								
57.0	61.0	Gravel, coarse								
61.0	70.0	Till								
61.0	70.0	Till								
70.0	72.0	Bedrock, greywacke								
	72.0	End of Hole								

p.p.b. = parts per billion
 p.p.m. = parts per million
 HV = heavy mineral fraction
 N.D. = Not detected
 I.S. = Insufficient Sample

DIAMOND DRILL RECORD

LOGGED BY G. Hines & D. M. Hendrick *G. Hines*

PROPERTY I. Legault, North 1/2 of South 1/2, Lot 6, Concession IV, Mountjoy Township, Ontario

D.D.H. No. IV-6-6 PAGE 1

LATITUDE _____ BEARING OF HOLE _____ STARTED Mar. 11/74 11:30 A.M.

CLAIM No. West 1/2 of Lot

DEPARTURE _____ DIP OF HOLE Vertical COMPLETED Mar. 11/74 2:00 P.M.

DIRECTION AND DISTANCE FROM

ELEVATION _____ DIP TESTS _____ DEPTH 93.0 feet

NE. CLAIM POST



Overburden Hole Record

FOOTAGE		DESCRIPTION	SAMPLE No.	FOOTAGE		SAMPLE LENGTH	ASSAY			
FROM	TO			FROM	TO		Au	As	Cu	
0.0	10.0	Clay					p.p.b.	p.p.m.	p.p.m.	p.p.m.
10.0	14.0	Gravel								
14.0	24.0	Gravel and boulders								
24.0	34.0	No rejects, lost water at 30.0'								
34.0	38.0	Clay and gravel								
38.0	42.0	Gravel, lost water								
42.0	51.0	No rejects, lost water								
51.0	59.0	Clay and gravel								
59.0	64.0	Sand								
64.0	70.0	Clay and gravel								
70.0	74.0	Gravel								
74.0	78.0	Fine sand, lost water at 76.0'								
78.0	86.0	Gravel and clay								
86.0	91.0	Till (Grenache) (Slate)	33	87.0	90.0	3.0'	N.D.	81	275	475 HV
91.0	93.0	Bedrock	34	90.0	91.0	1.0'	I.S.	47	310	2700 HV
	93.0	End of Hole	35	91.0	93.0	2.0'	< 5	5	82	188

DIAMOND DRILL RECORD

LOGGED BY G. Hines & D. M. Hendrick

G. Hines

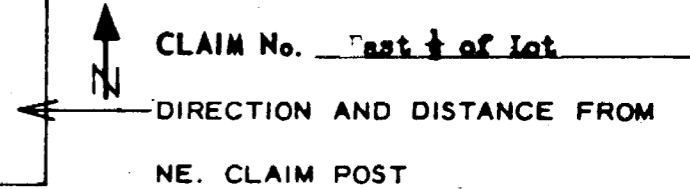
PROPERTY A. Vestin, North 1/4 of North 1/4, Lot 7, Concession IV, Mountjoy Township, Ontario

D.D.H. No. IV-7-1 PAGE 1

LATITUDE _____ BEARING OF HOLE _____ STARTED Mar. 12/74 2:13 P.M.

CLAIM No. East 1/4 of lot

DEPARTURE _____ DIP OF HOLE Vertical COMPLETED Mar. 12/74 3:15 P.M.



ELEVATION _____ DIP TESTS _____ DEPTH 95.0 feet

Overburden Hole Record

FOOTAGE		DESCRIPTION	SAMPLE No.	FOOTAGE		SAMPLE LENGTH	ASSAY							
FROM	TO			FROM	TO		Au	Ag	Cu	Zn				
0.0	78.0	Clay												
78.0	83.0	Till	46	80.0	83.0	3.0'	10	21	240	193				
83.0	85.0	Bedrock	47	83.0	85.0	2.0'	< 5	11	32	65				
	85.0	End of Hole												

- Au = Gold
- Ag = Arsenic
- Cu = Copper
- Zn = Zinc
- P.P.M. = parts per million
- P.P.B. = parts per billion
- HV = Heavy Mineral Fraction
- M.D. = Not Detected
- I.S. = Insufficient Sample

DIAMOND DRILL RECORD

LOGGED BY G. Hulse & D. M. Hendrick *G. Hulse*

PROPERTY E. Jutila, North 1/2 of North 1/2, Lot 8, Concession IV, Mountjoy Township, Ontario

D.D.H. No. IV-9-1 PAGE 1

LATITUDE _____ BEARING OF HOLE _____ STARTED Mar. 13/74 4:35 P.M.

CLAIM No. East 1/2 of Lot

DEPARTURE _____ DIP OF HOLE Vertical COMPLETED Mar. 13/74 5:15 P.M.

DIRECTION AND DISTANCE FROM

ELEVATION _____ DIP TESTS _____ DEPTH 54.0 feet

NE. CLAIM POST



Overburden Hole Record

FOOTAGE		DESCRIPTION	SAMPLE No.	FOOTAGE		SAMPLE LENGTH	ASSAY			
FROM	TO			FROM	TO		Au	As	Cu	Zn
0.0	47.0	Clay					p.p.b.	p.p.b.	p.p.m.	p.p.m.
47.0	51.0	Gravel	54	47.0	51.0	4.0'	40	11	90	110 HV
51.0	54.0	Bedrock	55	51.0	54.0	3.0'	<5	N.D.	4	35
	54.0	End of Hole								

Au = Gold
 As = Arsenic
 Cu = Copper
 Zn = Zinc
 p.p.m. = parts per million
 p.p.b. = parts per billion
 HV = Heavy Mineral Fraction
 N.D. = Not Detected

DIAMOND DRILL RECORD

LOGGED BY G. Hines & R. H. Hendrick E. Hulse

PROPERTY S. Hines, South 1/2 of North 1/2, Lot 2, Concession IV, Municipality Toronto, Ontario

D.D.H. No. IV-9-2 PAGE 1

ATTITUDE _____ BEARING OF HOLE _____ STARTED Mar. 15/74 10:30 A.M.

CLAIM No. East 1/2 of Lot

DEPARTURE _____ DIP OF HOLE Vertical COMPLETED Mar. 15/74 2:30 P.M.

DIRECTION AND DISTANCE FROM

ELEVATION _____ DIP TESTS _____ DEPTH 98.0 feet

NE CLAIM POST



Drill Hole Record

FEET	FOOTAGE FROM / TO	DESCRIPTION	SAMPLE No.	FOOTAGE		SAMPLE LENGTH	ASSAY				
				FROM	TO		As	Ag	Cu	Zn	
0.0	40.0	Clay									
40.0	53.5	Silt, light water	60	40.0	53.5	13.5'	ND	23	190	115	NY
53.5	56.0	Bedrock, lost chips because of blocked pipe									
56.0	58.0	Bedrock	61	56.0	58.0	2.0'	<5	21	46	79	
58.0	78.0	End of Hole									

As = Gold
 Ag = Arsenic
 Cu = Copper
 Zn = Zinc
 P.P.M. = parts per million
 P.P.B. = parts per billion
 NY = Heavy Mineral Fraction
 N.D. = Not Detected

DIAMOND DRILL RECORD

LOGGED BY G. King & D. M. Hendrick G. House

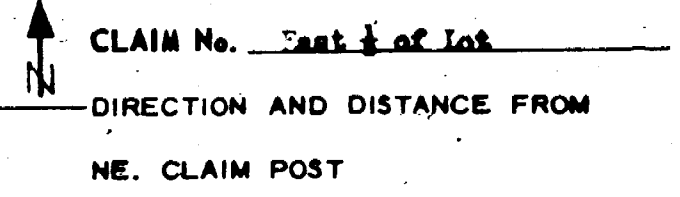
D.D.H. No. IV-10-1 PAGE 1

PROPERTY Whissel (S.R.), North 1/2 of North 1/2, Lot 10, Concession IV, Mountjoy Township, Ontario

LATITUDE _____ BEARING OF HOLE _____ STARTED Mar. 18/74 8:30 A.M.

DEPARTURE _____ DIP OF HOLE Vertical COMPLETED Mar. 18/74 10:00 A.M.

ELEVATION _____ DIP TESTS _____ DEPTH 65.5 feet



Overburden Hole Record

FOOTAGE		DESCRIPTION	SAMPLE No.	FOOTAGE		SAMPLE LENGTH	ASSAY						
FROM	TO			FROM	TO		Au	Ag	Cu	Zn			
0.0	15.0	Clay											
15.0	44.0	Clay and gravel											
44.0	59.0	Coarse gravel											
59.0	63.5	Clay and gravel	110	59.0	63.5	4.5'	15	7	90	76	NV		
63.5	65.5	Bedrock	111	63.5	65.5	2.0'	55	5	45	49			
	65.5	End of Hole											

Au = Gold
 Ag = Arsenic
 Cu = Copper
 Zn = Zinc
 P.P.M. = parts per million
 P.P.H. = parts per million
 NV = Heavy Mineral Fraction
 I.S. = Insufficient Sample

DIAMOND DRILL RECORD

LOGGED BY G. Hines & D. M. Hendrick G. Hines

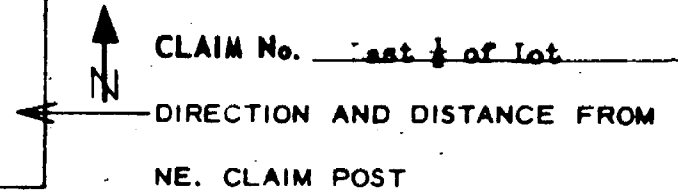
PROPERTY D. Caron, South 1/2 of North 1/2, Lot 10, Concession IV, Mountjoy Township, Ontario

D.D.H. No. IV-10-2 PAGE 1

LATITUDE _____ BEARING OF HOLE _____ STARTED Mar. 18/74 12:00 Noon

CLAIM No. East 1/2 of Lot

DEPARTURE _____ DIP OF HOLE Vertical COMPLETED Mar. 18/74 1:55 P.M.



ELEVATION _____ DIP TESTS _____ DEPTH 95.0 feet

Overburden Hole Record

FOOTAGE		DESCRIPTION	SAMPLE No.	FOOTAGE		SAMPLE LENGTH	ASSAY			
FROM	TO			FROM	TO		Au	As	Cu	Zn
0.0	20.0	Clay					p.p.b.	p.p.m.	p.p.m.	p.p.m.
20.0	46.0	Gravel and clay								
46.0	77.0	Gravel and clay (till)								
77.0	81.0	Gravel and clay								
81.0	83.0	Till	114	81.0	83.0	2.0'	60	3	125	65 HV
83.0	85.0	Bedrock	115	83.0	85.0	2.0'	5	6	34	200
	85.0	End of Hole								

Au = Gold
 As = Arsenic
 Cu = Copper
 Zn = Zinc
 p.p.m. = parts per million
 p.p.b. = parts per billion
 HV = Heavy Mineral Fraction
 M.D. = Not Detected

DIAMOND DRILL RECORD

LOGGED BY G. Hines & D. M. Hendrick *G. Hines*

PROPERTY H. Logault (S.R.), South $\frac{1}{4}$ of South $\frac{1}{4}$, Lot 8, Concession V, Mountjoy Township, Ontario

D.D.H. No. V-2-5 PAGE 1

LATITUDE _____ BEARING OF HOLE _____ STARTED Mar. 21/74 9:30 A.M.

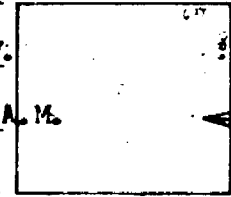
CLAIM No. West $\frac{1}{4}$ of Lot

DEPARTURE _____ DIP OF HOLE Vertical COMPLETED Mar. 21/74 10:30 A.M.

DIRECTION AND DISTANCE FROM

ELEVATION _____ DIP TESTS _____ DEPTH 70.0 feet

NE. CLAIM POST



Overburden Hole Record

FOOTAGE		DESCRIPTION	SAMPLE No.	FOOTAGE		SAMPLE LENGTH	ASSAY			
FROM	TO			FROM	TO		Au	As	Cu	Zn
0.0	61.0	Clay					p.p.b.	p.p.m.	p.p.m.	p.p.m.
61.0	68.0	Clay and gravel	124	65.0	68.0	3.0'	20	3	49	45 HV
68.0	70.0	Bedrock	125	68.0	70.0	2.0'	< 5	2	8	43
	70.0	End of Hole								

Au = Gold
 As = Arsenic
 Cu = Copper
 Zn = Zinc
 p.p.m. = parts per million
 p.p.b. = parts per billion
 HV = Heavy Mineral Fraction
 I.S. = Insufficient Sample

PROPERTY Alva Cooper -- North 1/4 of South 1/4, Lot 7, Concession V, Mountjoy Township, Ontario

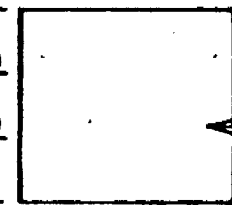
G. Hinse

Hole No. 5-7-6, PAGE 1

LATITUDE BEARING OF HOLE STARTED Mar. 25/74 9:30 am

DEPARTURE DIP OF HOLE Vertical COMPLETED " " 10:30 am

ELEVATION DIP TESTS DEPTH 60.5 feet



CLAIM No. West 1/4 of Lot

DIRECTION AND DISTANCE FROM
NE. CLAIM POST

OVERBURDEN HOLE RECORD : Logged By: G. Hinse & D. M. Hendrick

FOOTAGE		DESCRIPTION	SAMPLE No.	FOOTAGE		SAMPLE LENGTH	ASSAY				
FROM	TO			FROM	TO		Cu	Zn	As	Au	
0.0	58.0	Clay					p.p.m.	p.p.m.	p.p.m.	p.p.b.	
58.0	58.5	Gravel, sand	136	58.0	58.5	0.5	163	240	24	10	HV
58.5	60.5	Rock chips and sand	137	58.5	60.5	3.5	4	53	5	< 5	
		Rock chips -- porphyry, quartz, pyrite, carbonated									
	60.5	End of Hole (at or near bedrock)									
			Cu --	Copper							
			Zn --	Zinc							
			As --	Arsenic							
			Au --	Gold							
			p.p.m.	parts per million							
			p.p.b.	parts per billion							
			HV --	Heavy mineral fraction							

DIAMOND DRILL RECORD

LOGGED BY G. Hulse & D. M. Hendrick *G. Hulse*

PROPER Lapointe, South $\frac{1}{2}$ of South $\frac{1}{2}$, Lot 7, Concession V, Mountjoy Township, Ontario

D.D.H. No. V-724 PAGE 1

LATITUDE _____ BEARING OF HOLE _____ STARTED Mar. 25/74 12:50 P.M.

CLAIM No. Part $\frac{1}{2}$ of Lot

DEPARTURE _____ DIP OF HOLE Vertical COMPLETED Mar. 25/74 3:00 P.M.

DIRECTION AND DISTANCE FROM

ELEVATION _____ DIP TESTS _____ DEPTH 80.0 feet

NE. CLAIM POST.

Overburden Hole Record

FOOTAGE		DESCRIPTION	SAMPLE No.	FOOTAGE		SAMPLE LENGTH	ASSAY			
FROM	TO			FROM	TO		Au	As	Cu	Zn
0.0	40.0	Clay								
40.0	44.0	Gravel								
44.0	55.0	Well sorted gravel								
56.0	68.0	Clay								
68.0	77.5	Silt	141	73.5	77.5	4.0'	15	51	177	228 HV
77.5	80.0	Bedrock	142	77.5	80.0	2.5'	5	13	47	60
	80.0	End of Hole								

Au = Gold
 As = Arsenic
 Cu = Copper
 Zn = Zinc
 p.p.m. = parts per million
 p.p.b. = parts per billion
 HV = Heavy Mineral Fraction
 N.D. = Not Detected

DIAMOND DRILL RECORD

LOGGED BY G. Hines & D. M. Hendrick G. Hines

PROPERTY Levesque (S.R.), North 1/4 of South 1/4, Lot 6, Concession V, Mountjoy Township, Ontario

D.D.H. No. V-6-3 PAGE 1

LATITUDE _____ BEARING OF HOLE _____ STARTED Mar. 26/74 12:00 Noon

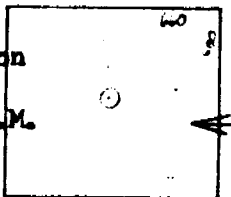
381619
CLAIM No. East 1/4 of Lot

DEPARTURE _____ DIP OF HOLE Vertical COMPLETED Mar. 26/74 1:20 P.M.

DIRECTION AND DISTANCE FROM

ELEVATION _____ DIP TESTS _____ DEPTH 53.0 feet

NE. CLAIM POST



Overburden Hole Record

FOOTAGE		DESCRIPTION	SAMPLE No.	FOOTAGE		SAMPLE LENGTH	ASSAY				
FROM	TO			FROM	TO		Au	As	Cu	Zn	
0.0	47.0	Clay									
47.0	50.0	Gravel	148	47.0	50.0	3.0'	15	26	115	135	HV
50.0	51.0	Fill	149	50.0	51.0	1.0'	25	17	245	198	HV
51.0	53.0	Bedrock	150	51.0	53.0	2.0'	5	6	40	62	
	53.0	End of Hole									

Au = Gold
 As = Arsenic
 Cu = Copper
 Zn = Zinc
 p.p.m. = parts per million
 p.p.b. = parts per billion
 HV = Heavy Mineral Fraction
 N.D. = Not Detected

DIAMOND DRILL RECORD

LOGGED BY G. Hinge & D. M. Hendrick

G. Hinge

D.D.H. No. V-6-8 PAGE 1

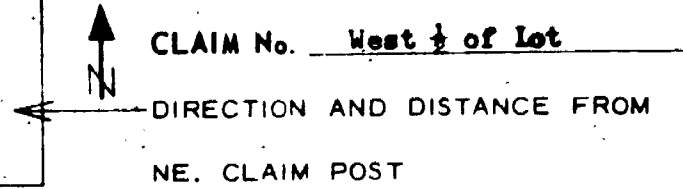
PROPERTY J. Hesse, North 1/2 of North 1/2, Lot 6, Concession V, Mountjoy Township, Ontario

CLAIM No. West 1/2 of Lot

LATITUDE _____ BEARING OF HOLE _____ STARTED Mar. 27/76 3:10 P.M.

DEPARTURE _____ DIP OF HOLE Vertical COMPLETED Mar. 27/76 3:55 P.M.

ELEVATION _____ DIP TESTS _____ DEPTH 57.0 feet

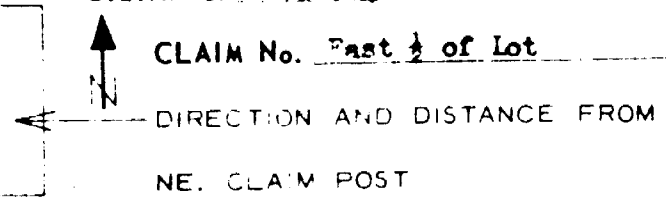


Overburden Hole Record

FOOTAGE		DESCRIPTION	SAMPLE No.	FOOTAGE		SAMPLE LENGTH	ASSAY			
FROM	TO			FROM	TO		Ag	As	Cu	Zn
0.0	49.0	Clay								
49.0	52.0	Gravel								
52.0	55.0	Till	159	52.0	55.0	3.0'	20	31	100	107
55.0	57.0	Bedrock	160	55.0	57.0	2.0'	5	10	46	92
	57.0	End of Hole								

p.p.b. p.p.m. p.p.m. p.p.m.

DIAMOND DRILL RECORD

LOGGED BY G. Hinse & D. M. HendrickG. HinseD.D.H. No. VI-7-4 PAGE 1PROPERTY Levesque, South 1/2 of South 1/2, Lot 7, Concession VI, Mountjoy Township, OntarioLATITUDE _____ BEARING OF HOLE _____ STARTED Mar. 27/74 4:50 P.M.DEPARTURE _____ DIP OF HOLE Vertical COMPLETED Mar. 27/74 5:45 P.M.ELEVATION _____ DIP TESTS _____ DEPTH 45.0 feetCLAIM No. Part 1/2 of Lot

Overburden Hole Record

FOOTAGE		DESCRIPTION	SAMPLE No.	FOOTAGE		SAMPLE LENGTH	ASSAY				
FROM	TO			FROM	TO		Au	As	Cu	Zn	
							p.p.b.	p.p.m.	p.p.m.	p.p.m.	
0.0	41.0	Clay									
41.0	43.0	Fine sand	161	41.0	43.0	2.0'	20	3	35	88 HV	
43.0	45.0	Bedrock	162	43.0	45.0	2.0'	5	5	45	95	
	45.0	End of Hole									
			Au = Gold								
			As = Arsenic								
			Cu = Copper								
			Zn = Zinc								
			p.p.m. = parts per million								
			p.p.b. = parts per billion								
			HV = Heavy Mineral Fraction								

DIAMOND DRILL RECORD

LOGGED BY G. Hinse & D. M. Hendrick

G. Hinse

D.D.H. No. V-7-1 PAGE 1

PROPERTY Levesque, North 1/2 of North 1/2, Lot 7, Concession V, Mountjoy Township, Ontario

LATITUDE _____ BEARING OF HOLE _____ STARTED Mar. 28/74 9:45 A.M.

DEPARTURE _____ DIP OF HOLE Vertical COMPLETED Mar. 28/74 11:35 A.M.

ELEVATION _____ DIP TESTS _____ DEPTH 78.0 feet



CLAIM No. East 1/2 of Lot

DIRECTION AND DISTANCE FROM

NE. CLAIM POST

Overburden Hole Record

FOOTAGE		DESCRIPTION	SAMPLE No.	FOOTAGE		SAMPLE LENGTH	ASSAY							
FROM	TO			FROM	TO		Au	As	Cu	Zn				
0.0	40.0	Clay												
40.0	65.0	Gravel												
65.0	76.0	Clay and gravel	163	73.0	76.0	3.0'	15	2	83	29	HV			
76.0	78.0	Bedrock	164	76.0	78.0	2.0'	5	7	41	70				
	78.0	End of Hole												

Au = Gold
 As = Arsenic
 Cu = Copper
 Zn = Zinc
 p.p.m. = parts per million
 p.p.b. = parts per billion
 HV = Heavy Mineral Fraction
 N.D. = Not Detected

DIAMOND DRILL RECORD

LOGGED BY G. Hinse & D. M. Hendrick

Continued

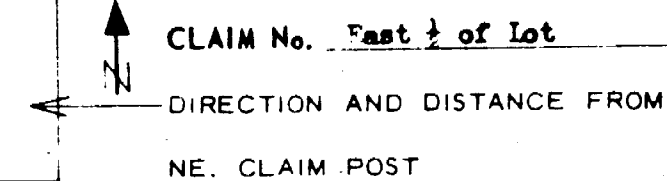
PROPERTY E. Schmidt (S.R.), North 1/4 of North 1/4, Lot 8, Concession V, Mountjoy Township, Ontario

D.D.H. No. V-8-1 PAGE 1

LATITUDE _____ BEARING OF HOLE _____ STARTED Mar. 29/74 10:50 A.M.

CLAIM No. East 1/2 of Lot

DEPARTURE _____ DIP OF HOLE Vertical COMPLETED Mar. 29/74 2:20 P.M.



ELEVATION _____ DIP TESTS _____ DEPTH 102.0 feet

Overburden Hole Record

FOOTAGE		DESCRIPTION	SAMPLE No.	FOOTAGE		SAMPLE LENGTH	ASSAY											
FROM	TO			FROM	TO		Au	As	Cu	Zn								
0.0	88.0	Clay and fine sand																
88.0	90.0	Lost water, no rejects																
90.0	96.0	Fine sand, lost water, barely no rejects																
96.0	97.0	Lost water, boulder																
97.0	100.0	Lost water in fine sand, boulder	171	96.0	100.0	4.0'	10	7	112	446	HV							
100.0	102.0	Bedrock	172	100.0	102.0	2.0'	5	13	20	99								
	102.0	End of Hole																

Au = Gold
 As = Arsenic
 Cu = Copper
 Zn = Zinc
 p.p.m. = parts per million
 p.p.b. = parts per billion
 HV = Heavy Mineral Fraction

DIAMOND DRILL RECORD

LOGGED BY G. Hinse & D. M. Hendrick

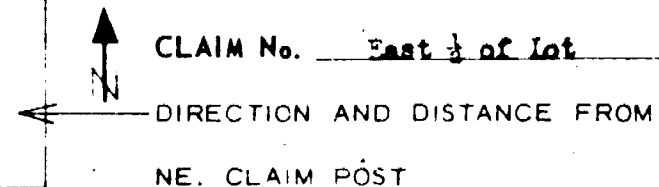
PROPERTY T. C. ... and E. Eastien, South 1/2 of North 1/2, Lot 8, Concession V, Mountjoy Township, Ontario

D.D.H. No. Y-3-2 PAGE 1

LATITUDE _____ BEARING OF HOLE _____ STARTED Mar. 29/74 2:45 P.M.

CLAIM No. East 1/2 of Lot

DEPARTURE _____ DIP OF HOLE Vertical COMPLETED Mar. 29/74 3:50 P.M.



ELEVATION _____ DIP TESTS _____ DEPTH 96.0 feet

Overburden Hole Record

FOOTAGE		DESCRIPTION	SAMPLE No.	FOOTAGE		SAMPLE LENGTH	ASSAY				
FROM	TO			FROM	TO		Au	As	Cu	Zn	
0.0	89.0	Clay and fine sand									
89.0	93.0	Gravel	173	89.0	93.0	4.0'	10	72	162	150	HV
93.0	94.0	Broken gravel	174	93.0	94.0	1.0'	10	21	191	72	HV
94.0	96.0	Bedrock, greywacke	175	94.0	96.0	2.0'	5	4	59	66	
	96.0	End of Hole									

Au = Gold

As = Arsenic

Cu = Copper

Zn = Zinc

p.p.m. = parts per million

p.p.b. = parts per billion

HV = Heavy Mineral Fraction

N.D. = Not Detected

DIAMOND DRILL RECORD

LOGGED BY G. Hines & D. M. HendrickG. HinesPROPERTY Dumouchel, North 1/2 of North 1/2, Lot 9, Concession III, Mountjoy Township, OntarioD.D.H. No. III-9-1 PAGE 1ELEVATION _____ BEARING OF HOLE _____ STARTED Mar. 30/74 9:00 A.M.CLAIM No. East 1/2 of LotDEPARTURE _____ DIP OF HOLE Vertical COMPLETED Mar. 30/74 9:30 A.M.

DIRECTION AND DISTANCE FROM

ELEVATION _____ DIP TESTS _____ DEPTH 35.0 feet

NE. CLAIM POST



Overburden Hole Record

FOOTAGE		DESCRIPTION	SAMPLE No.	FOOTAGE		SAMPLE LENGTH	ASSAY			
FROM	TO			FROM	TO		Ag	As	Cu	Zn
0.0	33.0	Clay								
33.0	35.0	Bedrock, greywacke, pyrite	179	20.0	33.0	13.0"	I.S.			HV
	35.0	End of Hole	180	33.0	35.0	2.0"	< 5	13	40	85
			Ag =	Gold						
			As =	Arsenic						
			Cu =	Copper						
			Zn =	Zinc						
			p.p.m. =	parts per million						
			p.p.b. =	parts per billion						
			HV =	Heavy mineral fraction						
			N.D. =	Not detected						
			I.S. =	Insufficient Sample						



42A11SW0310 11 MOUNTJOY

900

KERR ADDISON MINES LIMITED
BASAL TILL DRILLING AND GEOCHEM
TOTAL EXPENDITURES

Overburden Drilling - Bradley Bros. Ltd.	\$24,817.27
Assaying - Bondar-Clegg and Assayers Ltd.	\$ 1,920.00
Room and Board	\$ 847.38
Wages - Drill Supervision & Sampler	
P. Jeansonne 39 days @ \$35.00/day	\$ 1,330.00
M. Plante 43 days @ \$35.00/day	\$ 1,505.00
T. Jones 6 days @ \$45.00/day	\$ 270.00
Office Work	
S. Wichtacz 15 days @ \$35.00/day	\$ 525.00
Geologist	
G. Hinse 8 days @ \$100.00/day	\$ 800.00
Other Expenses - Gasoline, oil, sampling equipment, shipping of samples, repairs to land owners fences, etc.	\$ 359.98
	<u>\$32,374.63</u>

Total footage drilled: 6,041.0 feet

Cost per foot drilled: \$5.36

BRADLEY BROS. LIMITED

February 28, 1974



CONTRACT DIAMOND DRILLING

Kerr Addison Mines Limited
P.O. Box 91
Commerce Court
Toronto, Ontario
M5L 1C7

HOLE NO.	TO COVER DIAMOND DRILLING FOR				
	FROM	TO	FOOTAGE COMPLETED		
3-6-7-	0'	107'	107'		
3-6-2-	0'	92'	92'		
3-6-1	0'	89'	89'		
4-6-7	0'	92'	92'		
Equipment rental 27 hours				at \$64.00	\$1,728 00
Materials used					
1 Button bit				\$320.00	
1 Adapter				\$320.00	
1 Reaming Shell				\$100.00	
				\$740.00	
Plus 10%				<u>74.00</u>	
					<u>814 00</u>
					<u>\$2,542 00</u>

BRADLEY BROS. LIMITED

March 15, 1974



CONTRACT DIAMOND DRILLING

Kerr Addison Mines Limited
P.O. Box 91, Commerce Court West
Toronto, Ontario
MSL 1C7

HOLE NO.	TO COVER DIAMOND DRILLING FOR		March 1st to 15th, 1974				
	FROM		TO	FOOTAGE COMPLETED			
4-7-3	0'	108'	108'				
4-7-4	0'	64'	64'				
4-6-5	0'	95'	95'				
4-6-4	0'	78'	78'				
4-6-3	0'	72'	72'				
4-6-6	0'	94'	94'				
4-6-7	0'	68'	68'				
4-6-2	0'	76'	76'				
4-6-1	0'	75'	75'				
4-6-8	0'	69'	69'				
4-7-1	0'	86'	86'				
4-7-2	0'	117'	117'				
4-7-7	0'	80'	80'				
4-7-8	0'	77'	77'				
4-8-1	0'	54'	54'				
4-8-8	0'	40'	40'				
4-8-7	0'	46'	46'				
4-8-2	0'	60'	60'				
4-9-2	0'	58'	58'				
4-9-1	0'	69'	69'				
Equipment rental							
132 1/2 hours					at	\$64.00	\$8,480 00
Reduced rate							
2 hours					at	\$45.00	90 00
Materials used							
6 tricone bits at \$320.00						\$1,920.00	
1 Adaptor						320.00	
1 Shell						100.00	
						<u>\$2,340.00</u>	
Plus 10%						234.00	<u>2,574 00</u>
							<u>\$11,144 00</u>

B ADLEY BROS. LIMITED

March 31, 1974

CONTRACT DIAMOND DRILLING

Kerr Addison Mines Limited
P.O. Box 91, Commerce Court West
Toronto, Ontario M5L 1C7



HOLE NO.	TO COVER DIAMOND DRILLING FOR		
	FROM	TO	FOOTAGE COMPLETED
		March 16 to 31/74	
5-10-4	0'	78'	78'
5-10-3	0'	42'	42'
4- 9-8	0'	36'	36'
4-10-1	0'	65'	65'
4- 9-7	0'	46'	46'
4-10-2	0'	86'	86'
4-10-7	0'	93'	93'
4-10-8	0'	110'	110'
4-11-2	0'	101'	101'
4-11-7	0'	40'	40'
5- 8-5	0'	68'	68'
5- 8-6	0'	52'	52'
5- 8-3	0'	91'	91'
5- 8-4	0'	79'	79'
5- 7-5	0'	49'	49'
5- 7-6	0'	60'	60'
5- 7-3	0'	68'	68'
5- 7-4	0'	80'	80'
5- 6-5	0'	65'	65'
5- 6-4	0'	49'	49'
5- 6-3	0'	53'	53'
5- 6-6	0'	56'	56'
5- 6-7	0'	60'	60'
5-6-7-A	0'	57'	57'
5- 6-2	0'	42'	41'
5- 6-8	0'	56'	56'
6- 7-4	0'	45'	45'
5- 7-1	0'	78'	78'
5- 7-2	0'	70'	70'
5-7-2-A	0'	78'	78'
5- 7-7	0'	67'	67'
5- 7-8	0'	52'	52'
5- 8-1	0'	101'	101'
5- 8-2	0'	96'	96'
8- 8-7	0'	81'	81'
3- 9-1	0'	35'	35'
3- 9-8	0'	42'	42'
3- 9-7	0'	71'	71'
3- 9-2	0'	59'	59'

BRADLEY BROS. LIMITED

March 31, 1974



CONTRACT DIAMOND DRILLING

Kerr Addison Mines Limited
P.O. Box 91, Commerce Court West
Toronto, Ontario M5L 1C7

HOLE NO.	TO COVER DIAMOND DRILLING FOR March 16 to 31/74				
	FROM	TO	FOOTAGE COMPLETED		
			Equipment rental - 118 hours	at \$64.00	\$7,552 00
			Reduced rate - 9 hours	at 45.00	405 00
			Material used - 5- Tricone bits	at 320.00	\$1600.00
			2- Reaming shells	at 100.00	200.00
					<u>\$1800.00</u>
			Plus 10%		<u>180.00</u>
					<u>1,980 00</u>
					<u><u>\$9,937 00</u></u>

BRADLEY BROS. LIMITED

April 15, 1974

CONTRACT DIAMOND DRILLING

Kerr Addison Mines Limited
P.O. Box 91, Commerce Court West
Toronto, Ontario. M5L 1C7



HOLE NO.	TO COVER DIAMOND DRILLING FOR			FOOTAGE COMPLETED		
	FROM	TO				
5-8-8	0'	94'	94'			
5-10-5	0'	57'	57'			
	Equipment rental -					
	13 hours			at	\$64.00	\$832 00
	Material used -					
	1- Tricone Bit			at	320.00	
	Plus 10%				32.00	352 00
						<u>\$1,184 00</u>

BRADLEY BROS. LIMITED

April 25, 1974



CONTRACT DIAMOND DRILLING

Kerr Addison Mines Limited
P.O. Box 38,
Noranda, P.Q.

HOLE NO.	TO COVER DIAMOND DRILLING FOR			FOOTAGE COMPLETED		
	FROM	TO				
	<u>Picked up at our Timmins Shop</u>					
	1 - Roll Twine					\$4 10
	25 lbs. Burlap at 22¢ a lb.					<u>5 30</u>
						\$9 60
	Plus 7% P.S.T.					<u>67</u>
						<u>\$10 27</u>



BONDAR-CLEGG & COMPANY LTD.

784 BELFAST ROAD, OTTAWA, ONTARIO, K1G 0Z5

PHONE: 237-3110

Kerr Addison Mines, Ltd.,
Box 38,
Noranda, Quebec.

INVOICE: **Nº 1348**

DATE: April 11, 1974.

REPORT NO: 215-4

PROJECT:

51	Analyses of Copper	@ \$1.00	\$51.00
51	Analyses of Zinc	@ .50	25.50
51	Analyses of Arsenic	@ 1.50	76.50
51	Analyses of Gold	@ 3.00	153.00
51	Sample Prep. (rocks)	@ .75	38.25
		TOTAL	<u>\$344.25</u>



BONDAR-CLEGG & COMPANY LTD.

784 BELFAST ROAD, OTTAWA, ONTARIO, K1G 0Z5

PHONE: 237-3110

Kerr Addison Mines, Ltd.,
Box 38,
Noranda, Quebec.

INVOICE: 414

DATE: April 18, 1974.

REPORT NO: 227-4

PROJECT:

12	Analyses of Copper	@ \$1.00	\$12.00
12	Analyses of Zinc	@ .50	6.00
12	Analyses of Arsenic	@ 1.50	18.00
12	Analyses of Gold	@ 3.00	36.00
26	Sample Prep. (rocks)	@ .75	19.50
14	Heavy Mineral Separations	@ 7.50	105.00
		TOTAL	<u>\$196.50</u>



BONDAR-CLEGG & COMPANY LTD.

764 BELFAST ROAD, OTTAWA, ONTARIO, K1G 0Z5

PHONE: 237-3110

Kerr Addison Mines Ltd.,
Box 38,
Noranda, Quebec.

INVOICE: No 1026

DATE: April 23, 1974.

REPORT NO: 215-4

PROJECT:

58	Analyses of Copper	@ \$1.00	\$58.00
58	Analyses of Zinc	@ .50	29.00
57	Analyses of Arsenic	@ 1.50	85.50
58	Sample Prep. (rocks)	@ .75	43.50
58	Heavy Mineral Separation	@ 7.50	435.00
		TOTAL	<u>\$651.00</u>



BONDAR-CLEGG & COMPANY LTD.

784 BELFAST ROAD, OTTAWA, ONTARIO, K1G 0Z5

PHONE: 237-3110

• Kerr Addison Mines Ltd.,
Box 38,
Noranda, Quebec.

INVOICE: No 1034

DATE: April 24, 1974.

REPORT NO: 254-4

PROJECT:

24	Analyses of Copper	@ \$1.00	\$24.00
24	Analyses of Zinc	@ .50	12.00
24	Analyses of Arsenic	@ 1.50	36.00
24	Analyses of Gold	@ 3.00	72.00
24	Sample Prep. (rocks)	@ .75	18.00
		TOTAL	<u>\$162.00</u>

THIS IS A PROFESSIONAL SERVICE
ACCOUNTS DUE WHEN RENDERED



BONDAR-CLEGG & COMPANY LTD.

784 BELFAST ROAD, OTTAWA, ONTARIO, K1G 0Z5

PHONE: 237-3110

Kerr Addison Mines, Ltd.,
Box 38,
Noranda, Quebec.

INVOICE: No 1062

DATE: April 25, 1974.

REPORT NO: 227-4

PROJECT:

13	Analyses of Copper	@ \$1.00	\$13.00
13	Analyses of Zinc	@ .50	6.50
12	Analyses of Arsenic	@ 1.50	18.00
11	Analyses of Gold	@ 3.00	33.00
		TOTAL	<u>\$70.50</u>

THIS IS A PROFESSIONAL SERVICE
AND OUR FEE IS WELL EARNED



ASSAYERS LIMITED

SUBSIDIARY: 100 GAMBLE ST. W., P.O. BOX 685, ROUYN, J9X 2W8, TEL: 819-782-3010
ONTARIO: 44 VICTORIA STREET, SUITE 410, TORONTO, M5C 1Y2, TEL: 416-368-3100

ANALYTICAL CHEMISTS — ASSAYERS — SHIPPERS' REPRESENTATIVES — CONSULTANTS

In Account With

INVOICE

Kerr Addison Mines Limited
P. O. Box 38
NORANDA, Que., J9X 5A5

April 4/74

No. of Assays	DESCRIPTION	Rate	\$	c
	Mar. 26/74: 1 Assay for Au Handling charge on 1 sample		4.00	
			.50	
	Total		4.50	

0-11F-7

SUDBURY DIVISION: Sudbury Assay Office, 256 Oak Street, Sudbury, Ontario - Tel: 786-673-1983

"SERVING INDUSTRY FOR OVER 36 YEARS"





ASSAYERS LIMITED

QUEBEC: 183 GAMBLE ST. W., P.O. BOX 666, ROUYN, J9X 2R8, TEL: 819-762-3010

ONTARIO: 44 VICTORIA STREET, SUITE 410, TORONTO, M5C 1Y2, TEL: 416-366-3100

ANALYTICAL CHEMISTS — ASSAYERS — SHIPPERS' REPRESENTATIVES — CONSULTANTS

In Account With

INVOICE

[

 Murray M. Macdonald Ltd.,

 Box 20

 100 St. Charles Street, Quebec

 P.Q. G1R 5

]

No. of Assays	DESCRIPTION	Rate	\$	c
	Large - 300 sample lots	.07	21	00
	August 7 - 66 sample lots	.07	4	72
	Total		25	62

SUDBURY DIVISION: Sudbury Assay Office, 256 Oak Street, Sudbury, Ontario - Tel: 705-673-1953

"SERVING INDUSTRY FOR OVER 35 YEARS"



No. Farm

March 25 1974

Received from Kerr Addison Mines L.
Two Hundred & Seventy five 100 DOLLARS
for one Month House Rent.
\$275.00

Henry Pennet

No. Farm

April 25 1974

Received from Kerr Addison Mines L.
Two Hundred & Seventy five 100 DOLLARS
for one Month Apartment Rent.
\$275.00

Henry Pennet

No. Form

May 25 1974

Received from Kerr Addison Mikes II

Two Hundred & seventy five /100 DOLLARS

for one Month Apartment Rent

\$275.00

Henry Lemmert.



NORTHLAND CEDAR PRODUCTS

Highway 101 Box 222 Timmins, Ontario P4N 7C9 Phone (705) 264-0338

Date May 3, 1974

SOLD TO: Kerr Addison Mines, 32 Rue Principale, P.O. Box 238,

SHIP TO: Noranda, Quebec

ROUTE: _____

Terms:

F.O.B.

Order No.

Car No.

Inv. No. 29505

Shingles Boards

Tally: Size 6 8 10 12 14 16

36 cedar posts

\$ 72.00

Plus Federal Tax 11%

7.92

\$ 79.92

10% interest on all overdue accounts

Ontario Northland
EXPRESS FREIGHT WAYBILL
MESSAGERIES-FRET CONNAINSEMENT

CONTRACT NUMBER
NUMERO DE CONTRAT
376960

WAYBILL NUMBER
NO DE CONNAINSEMENT

*General Express Co
760 Balmont Rd
Toronto*

SHIPPER'S CONTRACT COPY	EXP	FRT	DATE	CONTRACT NUMBER	WAYBILL NUMBER
EXAMPLAIRE DE CONTRAT DE L'EXPEDITEUR	MESS	FRET	10/1/54	144554	
SHIPPER'S ADDRESS 760 Balmont Rd Toronto			SHIPPER'S SIGNATURE <i>Bill Macy</i> DATE REC'D. DATE RECU		
SHIPPER'S SIGNATURE <i>Bill Macy</i>			SHIPPER'S SIGNATURE		
DATE REC'D. DATE RECU			NO. OF COPIES RECUS		
AMOUNT			SUB TOTAL		
FEE			TOTAL		
DROIT			TOTAL		

7 SHIPPER'S CONTRACT COPY
EXAMPLAIRE DE CONTRAT DE L'EXPEDITEUR

(PLEASE RETAIN)
(VEUILLEZ RETENIR)

(SEE REVERSE)
(VOIR AU VERSO)

Ontario Northland
EXPRESS FREIGHT WAYBILL
MESSAGERIES-FRET CONNAINSEMENT

EXP FRT DATE
MESS FRET 10/1/54

CONTRACT NUMBER
NUMERO DE CONTRAT
144554

WAYBILL NUMBER
NO DE CONNAINSEMENT

TO STATION - POINT D'ARRIVE BILLING POINT - LIEU DE FACTURATION POINT OF ORIGIN - LIEU D'ORIGINE

CONSIGNEE NAME AND ADDRESS - NOM ET ADRESSE DU DESTINATAIRE
*General Express Co
760 Balmont Rd
Toronto*

SHIPPER TO INDICATE IF CHARGES ARE PREPAID OR COLLECT
L'EXPEDITEUR DOIT SPECIFIER PORT PAYS OU PORT DU.

NO. OF PIECES NO DE COLIS	DESCRIPTION	WEIGHT POIDS	RATE - TAUX	PREPAID PAYS	COLLECT PORT DU
				<input checked="" type="checkbox"/>	<input type="checkbox"/>
TOTAL PIECES TOTAL COLIS	VALUATION AMOUNT VALEUR DECLAREE	SUB TOTAL			
WHEN REQUIRED BY TARIFF SHIPPER MUST SHOW TOTAL CUBE CE SHIPMENT - SILE TARIFF - SE INDIQUER LE VOLUME TOTAL		EVALUATION			
DIMENSIONS	TOTAL CUBE VOLUME (PES. / LB)	DIMENSIONAL WEIGHT POIDS TARIF	550 / 500 LB	\$1 / LB	
SHIPPER ADDRESS <i>General Express Co 760 Balmont Rd Toronto</i>		EXPEDITEUR - ADRESSE			
SHIPPER'S SIGNATURE <i>Bill Macy</i>		SHIPPER'S SIGNATURE			
DATE REC'D. DATE RECU		NO. OF COPIES RECUS			
RECEIVED TERMINAL RECU DE DESTINATION		DATE REC'D. DATE RECU			
CAD BY - VERIFIE PAR		NO. OF COPIES RECUS			
FORM NO. 10 - 10/54		FORM NO. 10 - 10/54			
AMOUNT		SUB TOTAL			
FEE		TOTAL			
DROIT		TOTAL			

7 SHIPPER'S CONTRACT COPY
EXAMPLAIRE DE CONTRAT DE L'EXPEDITEUR

(PLEASE RETAIN)
(VEUILLEZ RETENIR)

(SEE REVERSE)
(VOIR AU VERSO)

REILLY & ROUYN LTD.

REILLY & ROUYN LTD.

YOUR ORDER NO.

ROUYN. QUE.

21 Jan 1974

YOUR NAME

Ken Addison Mines Ltd. Exp. Dept.

ADDRESS ADDRESS

32 MAIN ST HOFANDA BOX 38

QUANTITY	DESCRIPTION	UNIT PRICE	AMOUNT
12	pieces pecans		3.66
16	graham crackers	8.95	53.70
			57.50
	Tax		4.50
			61.95
Charge			
CC			
Randy Gagnon			
0-11F-9			
		TOTAL	

REF: 19

16419

DELIVERY COPY

YOUR ORDER NO.

ROUYN. QUE.

21 Jan 1974

YOUR NAME

Ken Addison Mines Ltd. Exp. Dept.

ADDRESS ADDRESS

32 MAIN ST HOFANDA BOX 38

QUANTITY	DESCRIPTION	UNIT PRICE	AMOUNT
12	pieces pecans		3.66
16	graham crackers	8.95	53.70
			57.50
	Tax		4.50
			61.95
Charge			
CC			
Randy Gagnon			
0-11F-9			
		TOTAL	

REF: 19

16419

DELIVERY COPY

TELEPHONE 762-7121

AIMÉ **BP** ENR.

2529

AUTO ÉLECTRIQUE

RÉPARATIONS GÉNÉRALES - GENERAL REPAIRS

15 RUE MAINS SUR LES COMPTES APRÈS 15 JOURS 4 RUE PRINCIPALE MAIN STREET ROUYN, QUÉ.

NOM NAME *Hein Addeon* DATE *19 fev.*

ADRESSE ADDRESS NO DE LICENCE LIC NO

MARQUE MAKE MODÈLE MODEL NO DE SERIE SERIAL NO MILEAGE MILEAGE

VOYAGE TRIP REPARATIONS ET OUVRAGES COMMANDES MONTANT REPAIRS AND SERVICES ORDERED AMOUNT

12 =

860

G. Stue

0-11F-9

TERMS ET CONDITIONS: 1. ESTIMATES ARE FOR LABOR ONLY - MATERIALS ADDITIONAL. 2. THIS COMPANY DOES NOT ASSUME ANY RESPONSIBILITY FOR VEHICLES OR OTHER EQUIPMENT LEFT FOR REPAIRS OR STORAGE OR FOR ARTICLES LEFT IN VEHICLES OR EQUIPMENT. 3. IN THE EVENT OF NON-PAYMENT OF THE TOTAL CHARGES THE OWNER AUTOMATICALLY THIS COMPANY TO REPOSSESS THE VEHICLE OR ARTICLE AND HOLD IT UNTIL THIS TOTAL BILL IS PAID OR TO SELL IT.

OUVRAGE LABOUR

PIECES PARTS

TAXE TAX

TOTAL *860*

PIECES PARTS

SORTIE OUT

ENTRÉE IN

DATE TAKEN BY	INITIALED BY
SIGNATURE	NO DE TELEPHONE PHONE NO

PAY LES PRELEVÉS DE RECOMPENSATION AU MONTANT DE

SIGNATURE

TERMS AND CONDITIONS: 1. ALL ESTIMATES ARE FOR LABOR ONLY - MATERIALS ADDITIONAL. 2. THIS COMPANY DOES NOT ASSUME ANY RESPONSIBILITY FOR VEHICLES OR OTHER EQUIPMENT LEFT FOR REPAIRS OR STORAGE OR FOR ARTICLES LEFT IN VEHICLES OR EQUIPMENT. 3. IN THE EVENT OF NON-PAYMENT OF THE TOTAL CHARGES THE OWNER AUTOMATICALLY THIS COMPANY TO REPOSSESS THE VEHICLE OR ARTICLE AND HOLD IT UNTIL THIS TOTAL BILL IS PAID OR TO SELL IT.

NIEMI'S ESSO
TRAVEL CENTRE
HWY 11 KENOGAMI ONT

05 75

Blue Journal
2 25 74

✓ 111 7 06

F277 568 PQ

7 00

55972224

McL 12015 0-11F-9 TIMMINS.

241 624 623 5 YYY 00889

KERR ADDISON MINES
LIMITED

05 75

RIVER SIDE ESSO
630 RIVERSIDE DR
TIMMINS ONT

7.60

1.30

09 F21-228 *Oil*

8.89

55788423

0-11F-9

5404 0008.89 TOTAL

NIEMI'S ESSO
TRAVEL CENTRE
HWY 11 KENOGAMI ONT

05 75

6/11/74

2 23 74

850

F112 813 PQ

850

55972238

0-11F-9

241 624 623 5 YYY 00730

KERR ADDISON MINES
LIMITED

05 75

LARDER AUTO SERVICE
136 GOVERNMENT ROAD
LARDER LAKE ONTARIO

6/11/74

2 25 74

X.F. 1124

7.30

E271228

Oil

7.30

55211217

0-11F-9

N **NORTHERN TELEPHONE LIMITED**
TELEPHONE DU NORD DE QUEBEC INC. **N**

DAY	MO	YR	EXCH	TELEPHONE NO	CODE
24	03	74	084	264 2478	00
OUR	MOIS	AN	ELNA	NO DE TELEPHONE	CODE

PREVIOUS TOTAL TOTAL PRECEDENT 30.54	PAYMENTS PAIEMENTS 30.54	ADJUSTMENTS AJUSTEMENTS	UNPAID BALANCE SOLDE IMPAYEE 0.00	* LATE PAY CHARGE * FRAIS DE RETARD MAR 26
LOCAL SERVICE SERVICE LOCAL 4.95	LONG DISTANCE SERVICE INTERURBAIN 10.29	DIRECTORY ADV PUBLICITE/ANNUAIRE .00	OTHER CHARGES & CR. AUTRES FRAIS & CR. .00	TAX TAXE 1.07

16.31

JONES I
 BOX 30
 NORANDA QNT

OTHER CHARGES - CREDITS	AUTRES FRAIS - CREDITS	CHARGES - FRAIS	CR.

PAYMENT RECORD RECORD DE PAIEMENT

241 624 623 5 YYY 00816

KERR ADDISON MINES LIMITED 0575

RIVERVIEW ESSO
630 RIVE-SIDE DR
TIMMINS ONT

G. Hume
74

132 816

F 116982 Que

816
0-11F-9

55788318

241 624 623 5 YYY 01000

KERR ADDISON MINES LIMITED 0575

NIEMI'S ESSO
TRAVEL CENTRE
HWY 11 KENOGAMI ONT

T. Jones 69590
0-11F-9

3 10 74

15.9 62.9 10 00

277-587 P.Q

10 00

55972100

241 624 623 5 YYY 01379

KERR ADDISON MINES LIMITED 0575

MARCO ARNTFIELD QUE

Chase
3 18 74

17 09 12 39

1111 513 Que

48884899

241 624 623 5 YYY 00880

KERR ADDISON MINES LIMITED 0575

KRANK'S ESSO
130 HAROLD ST
SOUTH POPUPINE ONT

Michel Plante

4 8 74

880

S

880

VILLAGE 13600
PROJET 0-11.

55759646

241 624 623 5 YYY 00805

KERR ADDISON MINES LIMITED 0575

HESS SERVICE
440 ALGONQUIN E
TIMMINS ONT

B. Macey

3 30 74

505

505

55685512

505 10

241 624 623 5 YYY 00670

KERR ADDISON MINES LIMITED 0575

NIEMI'S ESSO SERVICE
440 ALGONQUIN E
TIMMINS ONT

B. Niemi
3 19 74

VV P-5

670

670 70

55685769

*mi -12.813
0-11-F*

241 624 623 5 YYY 00464

KERR ADDISON MINES LIMITED 0575

NIEMI'S ESSO SERVICE
440 ALGONQUIN E
TIMMINS ONT

Pierre J...
3 22 74

*5
no track of*

3 20

1 15

4 64

F 277 586

55685725

0-11-F

241 624 623 5 YYY 00750

KERR ADDISON MINES LIMITED 0575

NIEMI'S ESSO
TRAVEL CENTRE
HWY 11 KENOAGAMI ONT

Pierre J...
4 3 74

119 750

277-586 QUE

750

55973834

Mid 13393

0-11-F-9

241 624 623 5 YYY 00530

KERR ADDISON MINES LIMITED 0575

ROUYH ESSO
AVE DU LAC GAMBLE
ROUYH QUE

Pierre J...
4 14 74

74 530

530

4162476



Mid 13962

0-11-F

241 624 623 5 YYY 00855
KERR ADDISON MINES LIMITED 0575

NIEMI'S ESSO
TRAVEL CENTRE
HWY 11 KENOAGAMI ONT

*0-11-F-9
2 25 74*

13A

855

855

855

55972225

587

241 624 623 5 YYY 00760

KERR ADDISON MINES LIMITED

0575

NORANDA P.O.
MURDOCH 6TH AVE
NORANDA QUE

T. Jones 67161
0-11 F-9
3 1 74

10⁶ 700

760

48883836

241 624 623 5 YYY 00997

KERR ADDISON MINES LIMITED

0575

NORANDA P.O.
MURDOCH 6TH AVE
NORANDA QUE

Okus

4 5 74

X 142 797

X F115-259

0-11F-9 997

48883501

241 624 623 5 YYY 00825

KERR ADDISON MINES LIMITED

0575

MATHESCH MOTORS
BOX 130
MATHESCH CNT

Okus
3 21 74

67 825

0-11F-9 125

50052141

241 624 623 5 YYY 00600

KERR ADDISON MINES LIMITED

0575

HESS SERVICE
440 ALGONQUIN E
TIMMINS CNT

B. Mair

2 3 15 74

500

500 10

55685956

241 624 623 5 YYY 00755

KERR ADDISON MINES LIMITED

0575

HESS SERVICE
440 ALGONQUIN E
TIMMINS CNT

B. Mair

2

3 26 74

103 6 90
10/30 1/27

55685956

TR 12, 664
0-11F-9