

42A12NE0536 33 MACDIARMID

010

Diamond Drilling

Township of MacDiarmid

Report No: 33

Work performed by: Hollinger Mines Ltd.

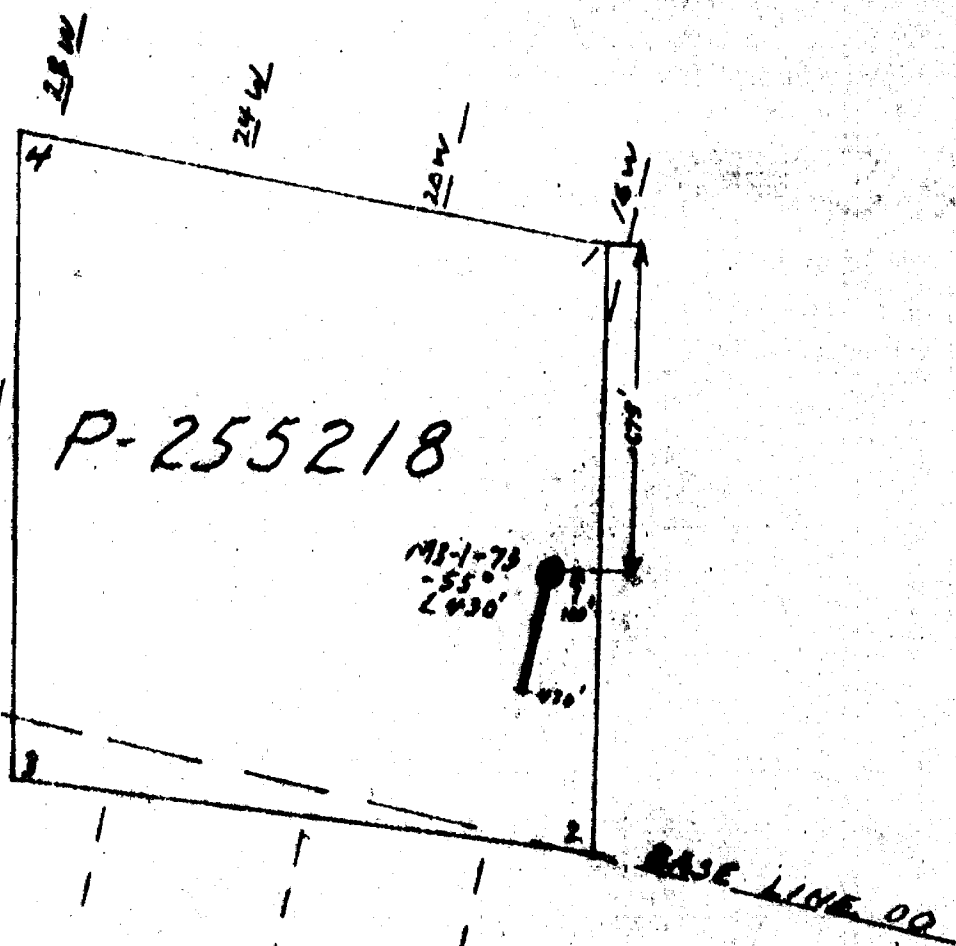
Claim No	Hole No	Footage	Date	Note
P. 255218	M 3-1-73	430'	Mar/73	(1)
P. 352944	M 3-2-73	450'	Mar/73	(1)

Notes:

(....) date placed on file

(1) (Aug/73) 46/73

(2) (Aug/73) 65/73



Started March 13/73
 Finished March 17/73
 R. Core
 Bradley Bros. Ltd. Timmins.

PLAN SHOWING LOCATION OF
 DDH # M3-1-73
 MACDIARMID # 3 GROUP
 Macdiarmid Twp, Ont.
 Scale - 1" = 400'

W.A. Hansen
 HOLLINGER MINES LIMITED
 TIMMINS, ONTARIO

Location of Collar from #1 Post of P-255217

South 675'
West 100'

FORM 922

NORTH 5+50N
EAST XL 16+00W
ELEV. _____
AZIM. 180° az.
DIP Collar - 55°

DIAMOND DRILL REPORT

HOLE NO. M3-1-73
COMMENCED March 13, 1973
FINISHED March 17, 1973
PURPOSE OF HOLE to test H.E.M. anomaly and magnetics

PROPERTY MACDIARMID #3

Claim P-255218, Macdiarmid Township

AX Core

FROM	TO	DESCRIPTION	CORE SAMPLES					DESCRIPTION OF SAMPLE
			FROM	TO	RECOV.	WIDTH	ASSAY	
0'	244'	CASING.						
244'	340.4'	ALTERED ULTRABASIC - fine-grained, pale greenish-grey, apparently composed chiefly of green and black waxy serpentine, carbonate (magnesium-rich?) and possibly some talc; upper part of section characterized by intense brecciation, fault gouge, and short lenses containing graphite; also local areas of quartz-carbonate veining; parts of brecciated sections are vuggy; fault gouge @ 287', 288.4', 290.4' to 292.8', and with heavy brecciation @ 273.3' to 274.3', 284.2' to 285.6', and 289' to 290'; sections in which graphite is found along shear planes and interstitial to fragments from 253.8' to 254.2', 254.9' to 255.2', @ 258.5', 262.1', 263.4', 263.6', 268.5' to 269.1', 273.3' to 274.3' and 279'(?) - suggestion of altered chicken track texture from 265.8' to 266' - black 'spots' in green matrix						

NORTH _____
 EAST. _____
 ELEV. _____
 AZIM. _____
 DIP _____

DIAMOND DRILL REPORT

PROPERTY MACDIARMID #3

HOLE NO. M3-1-73
 COMMENCED _____
 FINISHED _____
 PURPOSE OF _____
 HOLE _____

FROM	TO	DESCRIPTION	CORE SAMPLES					DESCRIPTION OF SAMPLE
			FROM	TO	RECOV.	WIDTH	ASSAY	
		lend a speckled appearance to core from 308' to 308.8', 311.5' to 312', and @ 315.8'						
		- sulphides occur as very fine blebs, smears and specks usually along fracture planes either subparallel to C.A., near perpendicular to C.A., and @ 40° to C.A.; the principal sulphide noted is pyrrhotite with traces of chalcopyrite; 303' (po, cp), 304.2' (po), 305.2' (po), po specks disseminated along slips @ 312.5', 316.5', 316.8', 317.1', 317.6', 317.9', 318.4', 318.8', 319.7', 320', 320.7', 320.9', 322.4', 322.8', 323.3', 324.3', 327.7', 336.6'						
		- small specks and smears of cp @ 316.3' and 321.4'						
		- lower contact @ 42° to C.A.						
340.4'	430'	ULTRABASIC (probably serpentinized peridotite) - black to very dark green, massive, generally uniform, fine-grained, magnetic, some chicken track texture; cut by some narrow sharp clean fractures @ 40° to 50° to C.A. and by						

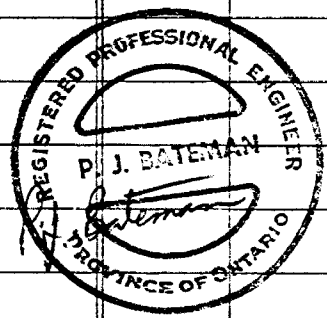
DIAMOND DRILL REPORT

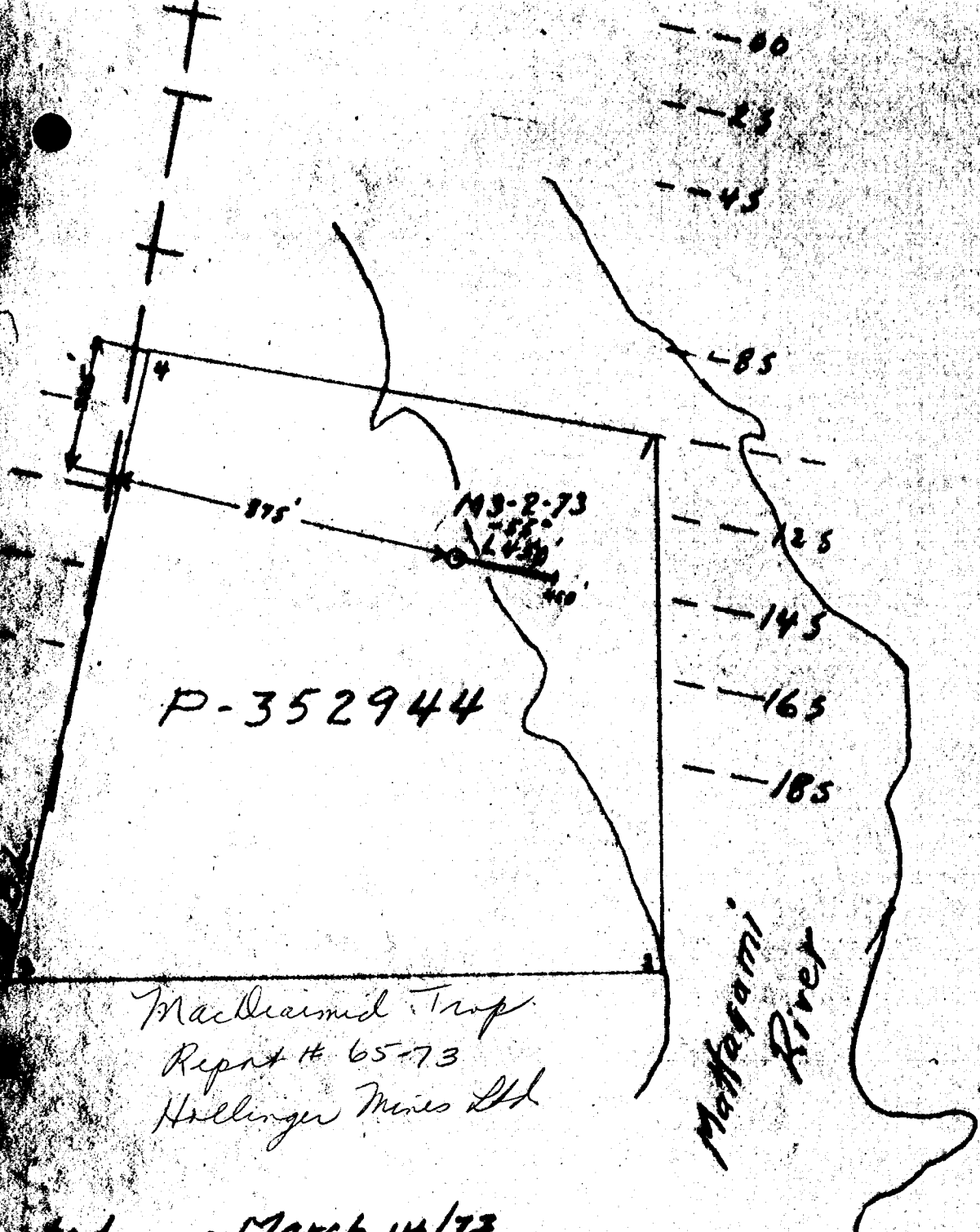
NORTH _____
 EAST. _____
 ELEV. _____
 AZIM. _____
 DIP _____

HOLE NO. M3-1-73
 COMMENCED _____
 FINISHED _____
 PURPOSE OF _____
 HOLE _____

PROPERTY MACDIARMID #3

FROM	TO	DESCRIPTION	CORE SAMPLES					DESCRIPTION OF SAMPLE
			FROM	TO	RECOV.	WIDTH	ASSAY	
		fractures filled with carbonate @ angles from 30° to 45° to C.A., a few irregular fractures are subparallel to C.A.; upper contact with altered ultrabasics is somewhat gradational and mainly picked on basis of colour change (even so, upper nine feet are rather bleached in comparison to main unit below); chicken tracks @ 344', 349' and 391'; short zone of veining from 370.4' to 371.4' @ 55° to C.A.; sulphides (mainly pyrrhotite) disseminated along slip planes throughout (tr. to 1%) especially @ 347.8', 355.1', 356.4'; 'striations' in serpentine @ numerous places parallel to C.A.						
		E.O.H. - 430'						
		HOLLINGER MINES LIMITED TIMMINS, ONTARIO						





MacDiarmid Trap
 Rept # 65-73
 Hollinger Mines Ltd.

- Started - March 14/73
- Finished - March 24/73
- Core - Wire Line
- Contractor - Bradley Bros. Ltd. Timmins.

MAP SHOWING LOCATION OF
 DDH # 193-2-73
 MACDIARMID TRAP GROUP
 MACDIARMID TRAP, ONT.
 3000' x 100'

HOLLINGER MINES LIMITED
 TIMMINS, ONTARIO

Location of Collar from #4 - P.352944

South 325'
East 875'

FORM 922

NORTH L 14 + 00 S
EAST 9 + 00 E
ELEV. _____
AZIM. Grid East
DIP Collar - 55°

DIAMOND DRILL REPORT

HOLE NO. M3-2-73
COMMENCED March 14, 1973
FINISHED March 24, 1973
PURPOSE OF HOLE to test HEM anomaly

PROPERTY MAGDIARMID #3 GROUP
Claim P-352944 Macdiarmid Twp.

AQ Core Logged by P. J. R.

FROM	TO	DESCRIPTION	CORE SAMPLES					DESCRIPTION OF SAMPLE
			FROM	TO	RECOV.	WIDTH	ASSAY	
0	390'	OVERBURDEN						
390'	449' 456' ^{448'}	ALTERED GABBRO - medium-grained, green to grey-green; composed of numerous white plagioclase laths oriented to give a felted texture, and interstitial green altered 'mafics' (possibly to tremolite-actinolite as well as epidote and chlorite); bluish-tinged black grains (subhedral and some euhedral) (non-magnetic) disseminated throughout, possibly ilmenite (rare perpendicular cleavage in a few grains suggests form of pyroxene?); plagioclase @ 426.8', 433', and 442.3' accompanied by a few pinkish Kspar grains; cut by quartz-carbonate veinlets @ 55° to 65° to C.A. generally, with a few @ 30° to 40° to C.A.; quartz-carbonate veinlets most prevalent @ 394', 397.4' to 398.4', 401' to 401.4' (apparently brecciated and containing some disseminated blebs of chalcopyrite), 402.7' to 402.9', 406.5' to 407.2', 412.7', 416.8', and 420.6' to 420.8'; fractures filled with						

NORTH _____
EAST. _____
ELEV. _____
AZIM. _____
DIP _____

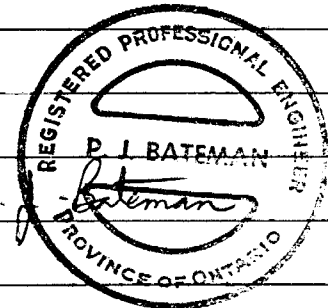
DIAMOND DRILL REPORT

HOLE NO. M3-2-73 2.
COMMENCED _____
FINISHED _____
PURPOSE OF _____
HOLE _____

PROPERTY MACDIARMID #3 GROUP

Macdiarmid Twp.

FROM	TO	DESCRIPTION	CORE SAMPLES					DESCRIPTION OF SAMPLE
			FROM	TO	RECOV.	WIDTH	ASSAY	
		yellow-green epidote cut core @ angles ranging from 15° to C.A. to subparallel to C.A., especially @ 403' to 403.2', 403.7' to 404', 431.3' to 431.9', and 446.7'; small blebs of pyrite (tr. to 1%) disseminated throughout; blebs of chalcopyrite occur on the margins of qtz-carbonate 'fragments' @ 401' to 401.4', and within a smaller zone of qtz-carbonate 'fragments' @ 424' to 424.6' with considerable pyrite interstitial to the essential rock minerals; chloritic slips abundant along fractures @ 30° to 40° to C.A.; minor fault gouge along fracture @ 20° to C.A. @ 411.9'; entire section broken and fractured.						
		E.O.H. ^{450' 88} 419'						



DIAMOND DRILL REPORT

HOLE NO. M3-2-73

NORTH _____
 EAST. _____
 ELEV. _____
 AZIM. _____
 DIP _____

PROPERTY MACDIARMID #3 GROUP

COMMENCED _____
 FINISHED _____
 PURPOSE OF _____
 HOLE _____

Macdiarmid Twp.

FROM	TO	DESCRIPTION	CORE SAMPLES					DESCRIPTION OF SAMPLE
			FROM	TO	RECOV.	WIDTH	ASSAY	
		<u>SAMPLES FOR GEOCHEM</u>						
		392.7' to 392.9' -						
		417.6' to 418' -						
		433' to 433.3' -						
		448.2' to 448.5' -						
		<u>SPLTT SAMPLES FOR ASSAY</u>						
		400' - 402' -						
		423' - 425' -						
		<u>SAMPLE FOR THIN SECTION</u>						
		427.2' -						