



010

Diamond Drilling

Township of MacDiarmid

Report No: 22

Work performed by: North Rankin Nickel Mines Ltd.

Claim No	Hole No	Footage	Date	Note
P. 61104	NRK 65-1	345'	Feb/65	(1)
P. 61103	NRK 65-2	344'	Mar/65	(1)
P. 61125	NRK 65-3	abandoned in over burden		
	NRK 65-8	450'	May/65	(1)
P. 61133	NRK 65-4	390'	Mar/65	(1)
	NRK 65-6	497'	Apr/65	(1)
P. 61129	NRK 65-5	371'	Apr/65	(1)
P. 61118	NRK 65-7	435'	Apr/65	(1)

Notes:

(....) date placed on file

(1) (Aug/73)

13-2-338

P-61103-04

**NORTH RANKIN NICKEL
MINES LTD**
PROPERTY
MACDIARMID TWP. ONT.

②

DIAMOND DRILL LOG

FOOTAGE	DIP TEST	
	Angle	
Collar	Reading	Corrected
		50
300	52	45 1/2

COMMENCED Feb. 25, 1965
 FINISHED March 2, 1965
 LOCATION Claim P-61104
 LATITUDE 7+90N of B. L #2
 DEPARTURE Line 3+00 East

ELEVATION
 HOR. COM.
 VERT. COM.
 AZIMUTH 215° -00'
 LENGTH 345 feet

HOLE No. NRK 65-1
 SHEET No. 1 of 1
 LOGGED BY M. Zurowski
 TOTAL RECOVERY 100%

Footage		DESCRIPTION	Sample No.	FOOTAGE			ASSAYS			Averages
From	To			From	To	Length				
0.0	106.0	Casing								
106.0	107.0	Rhyodacite - massive, could be boulder		NO SAMPLES TAKEN						
107.0	122.9	Diorite - medium grained and from 126.0 - 132.9 getting much finer grained, massive. Greyish green in color. Possibly coarse grained flow?								
132.9	345.0	Dacite - greyish green in color, very fine grained, pillow selvages from 140.0 - 224.0. From 224.0 massive, slightly epidotized. From 299.5 to 345.0, slightly foliated and few quartz filled amygdules.								
	345.0	End of Hole								

**BURTE RANKIN NICKEL
MINES
PROPERTY** (8)
Macfarland Twp., Ont.

DIP TEST		
FOOTAGE	Angle	
	Reading	Corrected
Surface		55°
200'		53°
350'		52°

COMMENCED **April 3, 1965**
FINISHED **" 10, 1965**
LOCATION **Claim P61129**
LATITUDE **15-50'N**
DEPARTURE **Line 48W**

ELEVATION
HOR. COM.
VERT. COM.
AZIMUTH **215°**
LENGTH **371'**

HOLE No. **65-5**
SHEET No. **1**
LOGGED BY **R. Peterson** (RP)
TOTAL RECOVERY **96.4%**

DIAMOND DRILL LOG

filed with P-54321

Footage		DESCRIPTION	Sample No.	FOOTAGE			ASSAYS			Averages
From	To			From	To	Length	% Cu	Oz Au		
0	120.0	Casing								
120.0	128.8	Rhyolite, dark, very fine grain, intense epidote, zeolite alteration, min. sparse to negative 122.5, 1/2"-1" disseminated chalcopyrite								
128.8	134.6	Rhyolite, gray, dense, cherty, pyrrhotite, pyrite, min. very sparse								
134.6	147.5	Feldspar porphyry, dark, fine grain matrix, numerous light gray green phenocryst. min. negative								
147.5	175.0	Rhyolite, gray, cherty, altered and fractured, variable foliation, 30° - 45° to C.A. min. sparse to negative. Lost Core 160.8 - 162.4, 164.3-164.8, 165.8-166.2 L.C. 170.8 - 172.4, 173.0-174.2: 6.3'								
175.0	193.8	Granodiorite, gray, medium to coarse grain, hard, minor qtz. carb. few pink feldspars, min. negative. Lost core 182.2-183.3, 185.2-186.4, 190.0-191.1, 192.2-193: 4.2								
193.8	214.6	Andesite, gray, medium grain, medium hard, lower contact 40° to C.A. minor qtz. carb. min. sparse. 197.4-197.6 quartz vein barren disseminated chalcopyrite sparse chloritized " min. 1/2"	196 197 198	208.0 212.4 214.5	209.6 213.6 215.7	1.6 1.4 1.2	.11 .26 nil	nil nil nil		
214.6	216.0	Sediment (graywacke inclusion?) arsenopyrite, min. sparse.								
216.0	241.7	Andesite (as above) 217.0-220.0 qtz. carb. chlorite, constitute 50% + of core 220.0-223.7 foliation 30° - 45° to C.A. 223.7-241.7 aggregate of light colored feldspars common and increasing to lower contact								
241.7	371.0	Diabase, dark gray, fine to medium grain, hard, very blacky, chloritized longitudinal, fracturing continues to end of hole. min. sparse to negative, 241.7-265.0 chilled and very blacky. Core loss 244.6-245.4.								

371' End of Hole

NORTH RANKIN NICKEL
MINES LTD.

PROPERTY
MEDERMOT TWP. ONT.

DIP TEST

FOOTAGE

Collar
250'
490'

Angle
Reading Corrected
55°
53° 30'
52°

COMMENCED April 13th., 1965.

FINISHED April 26th., 1965.

LOCATION Claims P61133 & 61126

LATITUDE 13 + 75' S

DEPARTURE Line 33 W

ELEVATION

HOR. COM.

VERT. COM.

AZIMUTH 215°

LENGTH 497'

HOLE No. 65-6

SHEET No. 1

LOGGED BY R. Petersen

TOTAL RECOVERY 100%

DIAMOND DRILL LOG

Footage From To	DESCRIPTION	Sample No.	FOOTAGE		ASSAYS		Averages
			From	To	Length	% Au	
0' 86'	Casing	199	253.6	255.8	2.2	-	.005
		200	275.7	277.3	1.6	0.12	.005
86.0' 161.5'	Diabase, dark grey, fine to medium grain, hard, abundant white feldspar lath, min. sparse to negative.						
161.5' 210.6'	Dacitic Tuff, light grey green, fine to medium grain, bedding 35° to C.A., considerable feldspathic alteration, gradually diminishing away from diabase contact, minor epidote, fe. in qtz, carb. stringers min. sparse to negative. 200.0' - 210.6' a few very narrow (1/16"-1/4") highly polished graphitic jointing, this section is also well fractured and chloritized.						
210.6' 228.6'	Diabase, grey, fine grain, hard, minor qtz. carb. and chlorite, pyrrhotite, pyrite, min. - 1%.						
228.6' 497.0'	Quartz Diorite (?) light grey green, medium grain, medium hard, fairly fresh and massive, pyrrhotite, pyrite, specks of chalcopyrite, min. sparse to 1/2% [±]						
	276.0'-277.2' chalcopyrite min. 1% [±]						
	277.2'-309.3' darker colour, blue quartz eyes, blocky carb, min. sparse to 1% -						
	309.3'-319.0' Lava inclusion, andesitic, green, fine grain, quartz and chlorite alteration.						
	319.0'-412.5' increasing grain size, graphic structure, massive and fresh.						
	412.5'-413.8' Quartz vein, barren						
	413.8'-497.0' Grey, fairly massive, min. sparse to 1%-						
	497' End of Hole.						

SEE MAP WITH PAARS
FOR P. 58320

Hole with P-58321

13-4-179 P.61118 - P.61125

NORTH RANKIN NICKEL
MINES LTD.
PROPERTY
MacDermid Twp, Ont.

FOOTAGE	DIP TEST	
	Reading	Corrected
Collar		60°
200'		59°
400'		60°

COMMENCED April 27th, 1965.	ELEVATION
FINISHED May 2nd, 1965.	HOB. COM.
LOCATION Claims P 61125 & P 61118	VERT. COM.
LATITUDE 4+20°S	AZIMUTH 35°
DEPARTURE Line 15 W	LENGTH 435'

HOLE No. 65-7
SHEET No. 1
LOGGED BY R. Petersen
TOTAL RECOVERY

DIAMOND DRILL LOG

Footage		DESCRIPTION	Sample No.	FOOTAGE			ASSAYS		Averages
From	To			From	To	Length	%Ni		
0	166	Casing	201	310.0	315.0	5.0	.10		
			202	315.0	320.0	5.0	.20		
166	235.8	Serpentinized Peridotite, dark grey, medium grain, medium hard, slightly talcose, minor magnesite veinlets, few stringers, min. sparse to negative.	203	320.0	325.0	5.0	.15		
			204	325.0	330.0	5.0	.07		
			205	330.0	335.0	5.0	.07		
			206	335.0	340.0	5.0	.22		
235.8	283.1	Quartz Diorite, light grey to grey green, medium grain, hard abundant small white feldspar, nodular black chlorite, fractured, min. negative.	207	340.0	345.0	5.0	.20		
			208	345.0	350.0	5.0	.16		
			209	350.0	355.0	5.0	.10		
283.1	294.8	(?) dark fine grain, medium hard, clay amygdalae constitute over 50% at the rock min. negative.	210	355.0	359.2	4.2	.07		
			211	367.8	392.8	5.0	.10		
			212	395.0	396.6	1.6	.15		
294.8	308.2	Serpentinite, crystalline to fibrous, light grey, medium grain, medium hard, chloritized fracturing, min. sparse.							
308.2	359.2	Serpentinized Peridotite, light grey, fibrous, medium soft, minor brecciation, very fine grain, sulphides vary from -1% to 5%							
359.2	387.8	Graphitic schist, silicification carrying fine grain pyrite (marcasite?) and speck chalcopyrite. min. 5% - 10%.							
387.8	392.8	Fragmental, brecciated, fine grain sulphides 5%-10%							
392.8	435.0	Graphitic schist and fragmental sediment interbedded, min. 5%-10%.							
This hole drifting down dip - caved in at bottom. Core loss in last 35' over 50%.									
435' End of Hole.									

13-4-179

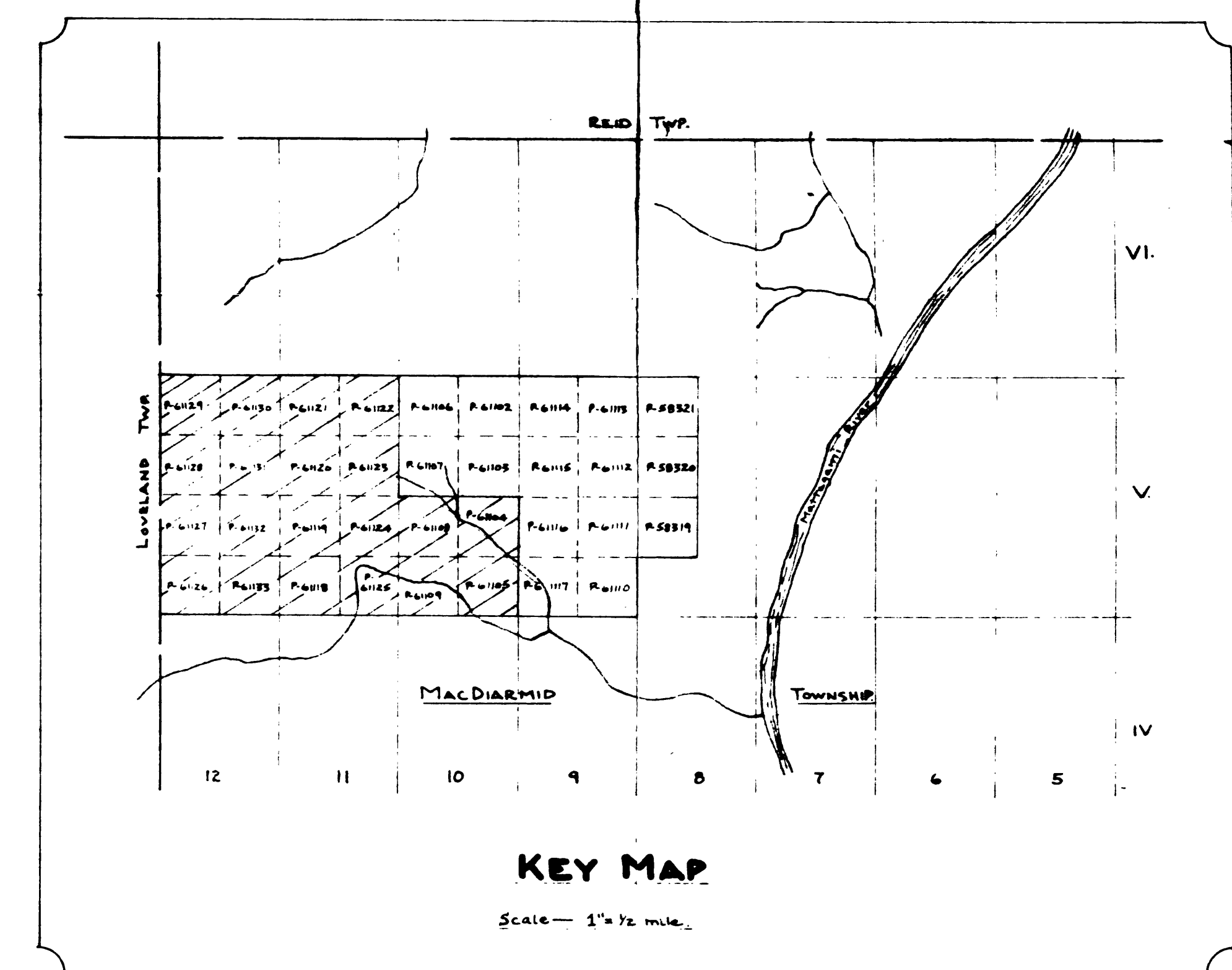
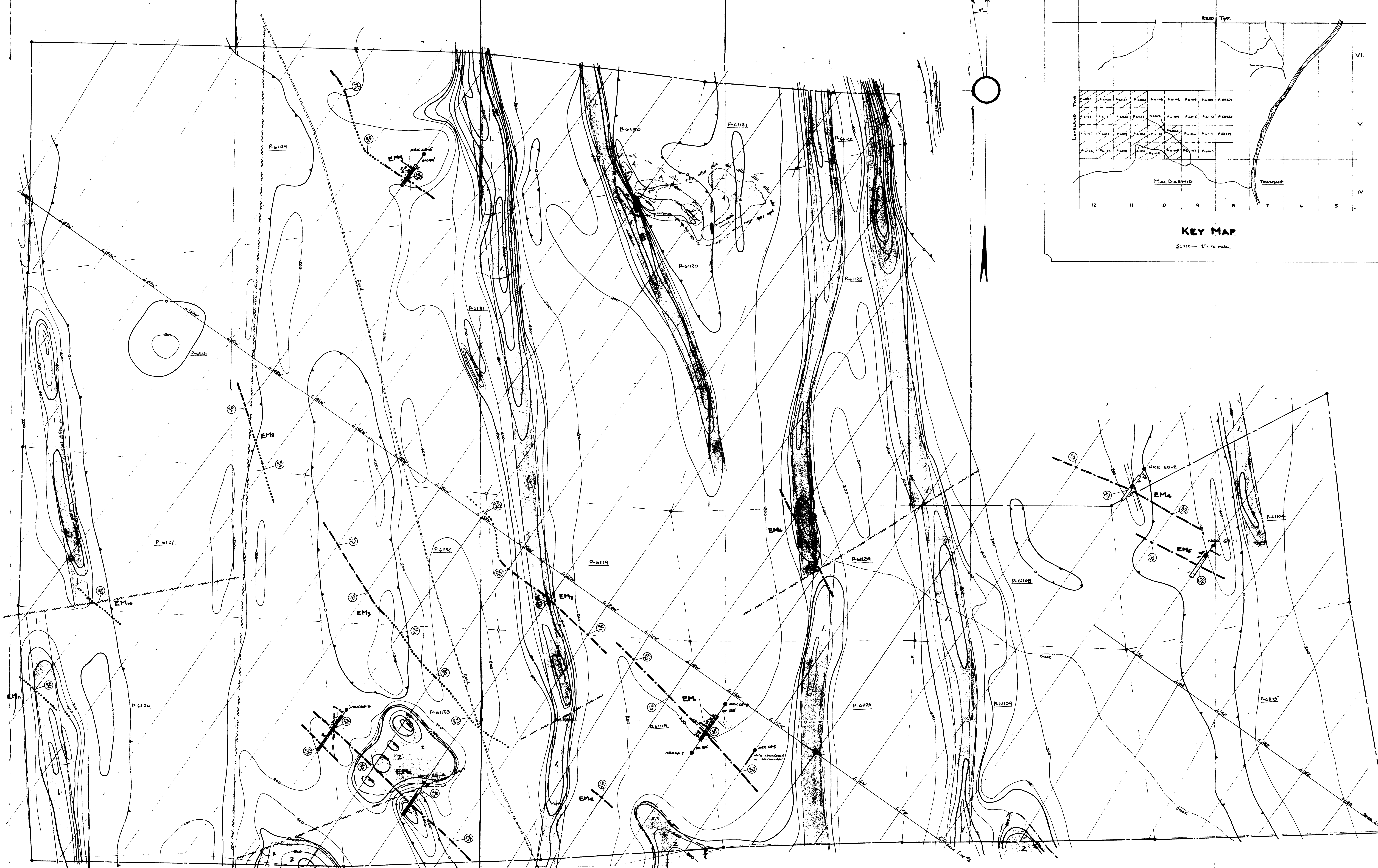
ORTE RANKIN NICKEL MINES

PROPERTY
Cadiarmid Twp., Ont.

DIP TEST			COMMENCED	MAY 4, 1965	ELEVATION	HOLE No. NRK 65-8
FOOTAGE	Angle		FINISHED	MAY 12, 1965	HOR. COM.	SHEET No. 1 of 2
	Reading	Corrected	Claims P-61125 & P-61118		VERT. COM.	LOGGED BY J. S. Donaldson
200'	54°	46.5°	LOCATION	0° 70' S. B. L.	AZIMUTH	215°
400'	53°	45.5°	LATITUDE	15 00 W	LENGTH	450'
			DEPARTURE		TOTAL RECOVERY	

DIAMOND DRILL LOG

Footage	DESCRIPTION	Sample No.	FOOTAGE			ASSAYS			Averages
			From	To	Length	% Ni	Sulphur	PNT	
0 - 165	Casing	213	100.0	105.0	5.0	.06	2 - 3% Sulphur		
		214	105.0	110.0	5.0	.12	3 - 4% " Weak PNT		
165 - 184.5	Andesite? - silicified - grayish green f.g. Barren except 184 - 184.5 - 1% sulphs.	215	110.0	115.0	5.0	.07	5% Sulphur	" PNT	
		216	115.0	122.0	7.0	.09	2 - 3% Sulphur		
		217	122.0	127.0	5.0	.08	< 1% Sulphur		
184.5 - 185	Greenish soft - basic? broken up or ground. Possible fault zone?	218	127.0	135.0	8.0	.14	< 1% "		
		219	135.0	135.0	0.0	.07	< 1% "		
185 - 188.7	Acid volcanics - v.f.g. black hard, cherty, occ. qtz. stringers - pyrite in slips. 1/2 pyrite	220	135.0	140.0	5.0	.03	< 1% "		
188.7 - 192	Andesite? as above 165-184.5 - barren								
192 - 198	Acid volcanics as above 185 - 188.7. Banded @ 50° C.A. - possible tuff Barren.								
198 - 203.5	Graphitic schist? - v.f.g. - soft, banded @ 50° C.A. Pyrite-graphite on slips: 200 - 200.5 Fractured with pyrite filling fractures L.C. @ 50° C.A. Meagre pyrite - pyrrhotite								
203.5 - 228	Acid volcanics? as above 185 - 188.7 - banded 203.5 - 215 - 1% Pyrite - thin seams Lost core 220.5 - 221.6								
228 - 298	Qtz Diorite - light greyish green. Similar to 228.5 - 497. in 65-6 228 - 240 - 1% Diss. sulphs. 240 - 250 - Meagre sulphs. 250 - 298 - Meagre sulphs.								
298 - 299.6	Lost Core								
299.6 - 322	Graphitic - serpentinitic schists - interbedded - schistosity @ 50° C.A. 299.6 - 305 - Mostly graphitic								



- GEOLOGICAL LEGEND**
- 1 [Symbol] - Quartz (Quartzite)
 - 2 [Symbol] - Gabbro (Zn), Peridotite (Zn), Diabase (Zn)
 - 3 [Symbol] - Sediments: Graywacke and Tuff
 - 4 [Symbol] - Basic Volcanics
 - 5 [Symbol] - Acid Volcanics

- Symbols**
- [Symbol] - Isomagnetic Lines
 - [Symbol] - Magnetic Depression
 - [Symbol] - Axis of Electromagnetic Anomaly - this symbol denotes ratio of I.P. to A.P. response and approximate width. If narrow, or out-of-phase response primary.
 - [Symbol] - Geological Contact - geophysical inferred.
 - [Symbol] - Rock Outcrop
 - [Symbol] - Fault - geophysically inferred.
 - [Symbol] - Complete Diamond Drill Hole - (going) projected to surface.
 - P-61125 - Claim Number



NORTH RANKIN NICKEL MINES LIMITED
 MACDIARMID TOWNSHIP - PEARLINE MINING DIVISION
 PROVINCE OF ONTARIO

PLAN SHOWING MAGNETIC CONTOURS, AXIS OF ELECTROMAGNETIC ANOMALIES, ROCK OUTCROP AND PRELIMINARY GEOLOGICAL INTERPRETATION OF MAGNETIC RESULTS.

Date: SEPT. 23rd, 1965 Scale - 1 inch = 200 feet. Drawn by: M. Z. GOSWAMI