



Diamond D

42A12NE0581 29 LOVELAND

010

Township of LOVELAND

Report N<sup>o</sup>: 29

Work performed by: Hollinger Mines Limited

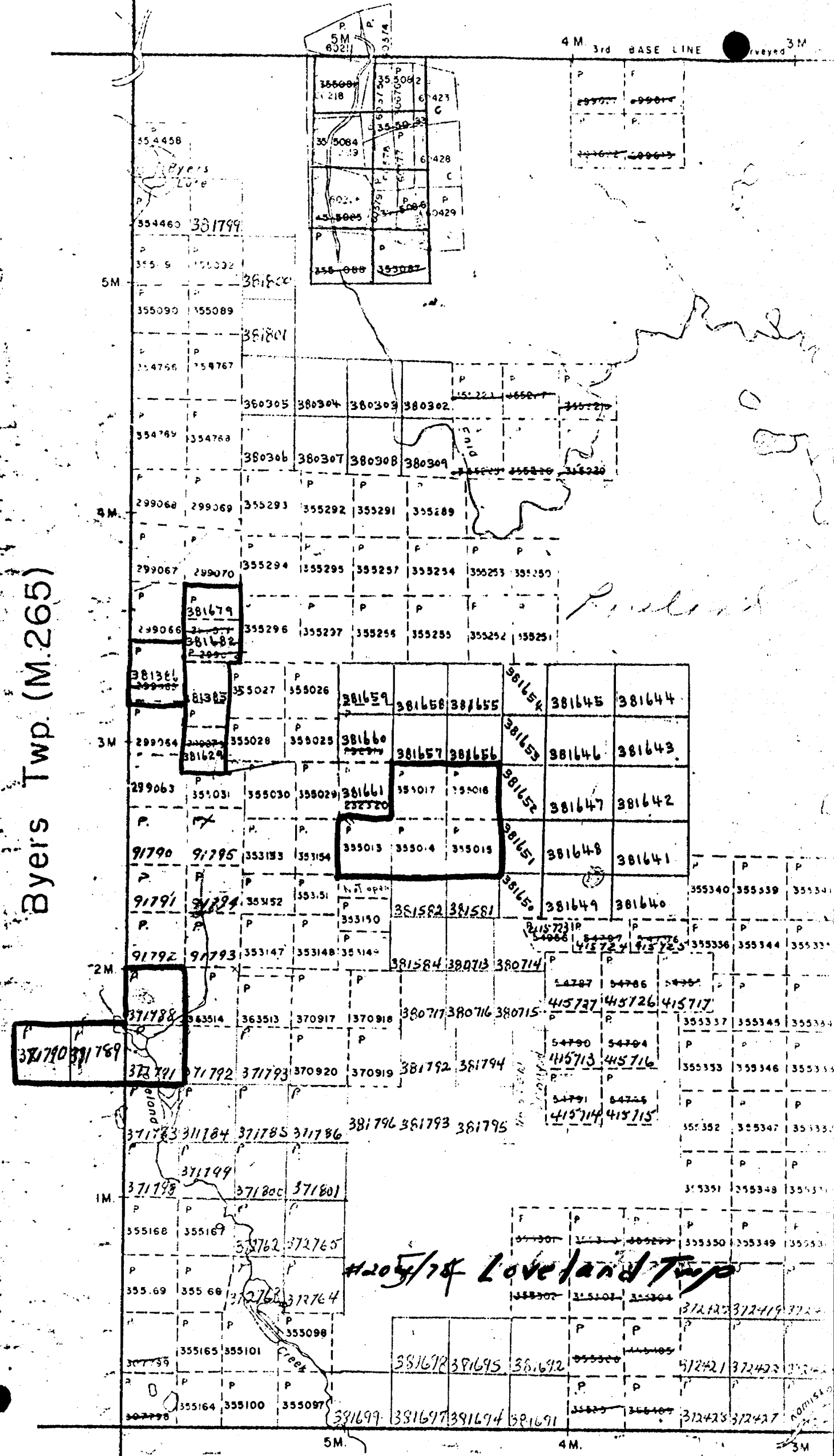
Claim N <sup>o</sup>	Hole N <sup>o</sup>	Footage	Date	Note
P 355031	#LV-19	lower 132'	Aug/74	(1)
	#LV-22	lower 123'	Sept/74	(1)
P 91795	#LV-20	375'	Sept/74	(1)
	#LV-2-29-75	148.0'	Dec/75	(2)

Notes: (1) 205/74

(2) #91-77

4 M 3rd BASE LINE Surveyed 3 M

Byers Twp. (M.265)



#205/78 Loveland Twp

371783 371784 371785 371786

371793 371794 371795

371796 371797 371798

371799 371800 371801

371802 371803 371804

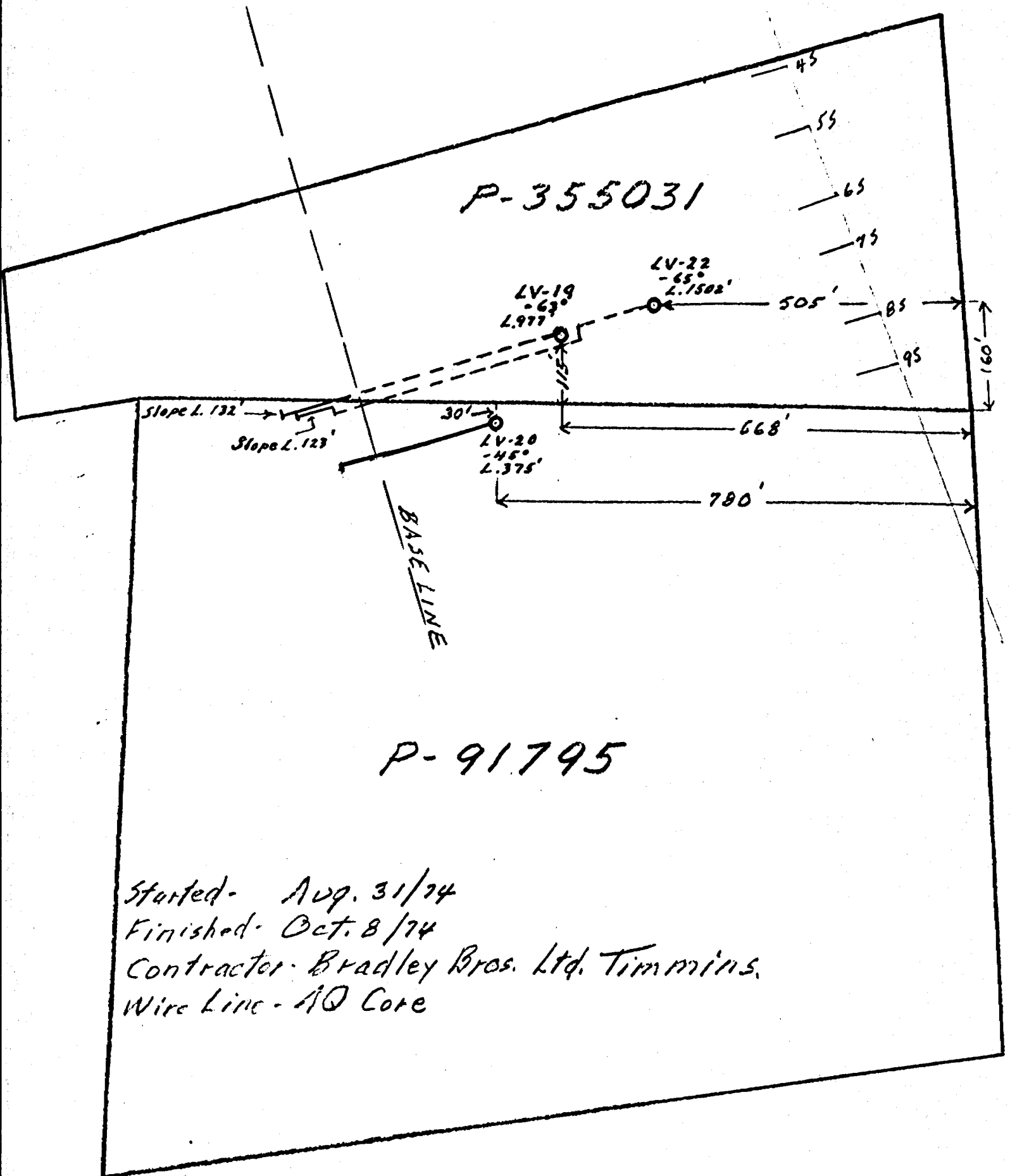
371805 371806 371807

371808 371809 371810

5M

4M

3M



Started - Aug. 31/74  
 Finished - Oct. 8/74  
 Contractor - Bradley Bros. Ltd. Timmins.  
 Wire Line - 40 Core

PLAN SHOWING LOCATION OF  
 DDH # LV-19, LV-20 & LV-22  
 LOVELAND TOWNSHIP  
 Scale - 1" = 200'

W. H. Hansen  
 HOLLINGER MINES LIMITED  
 TIMMINS, ONTARIO

Location of Collar from #2 Post of P-355031

North 115'  
West 668'

FORM 522

**DIAMOND DRILL REPORT**

HOLE NO. LV-19 (Lower 132')

NORTH XL 7S @ 11+50E of B.L.

EAST \_\_\_\_\_

ELEV. \_\_\_\_\_

AZIM. 63° @ Collar; @ 200' - 60.5°

DIP @ 400' - 61°; @ 600' - 61.5°

@ 800' - 59.5°

PROPERTY LOVELAND #2 GROUP

COMMENCED August 31, 1974

FINISHED September 11, 1974

PURPOSE OF HOLE \_\_\_\_\_

Claim P-91795

Loveland Township

FROM	TO	DESCRIPTION	CORE SAMPLES					ASSAY %		DESCRIPTION OF SAMPLE
			FROM	TO	RECOV.	WIDTH		Cu	Ni	
845	891	Granitized chloritic breccia.								
891	900	Lt. gr. chl. sch.								
			875	876	1	1	.81	.83	6" min. Gb. dike	
900	977	Granitized andesite breccia micaceous sections - Banding at 35° to C.A. Granophyric throughout section to end of hole.	876	880	4	4	.03	.02	Chl. bx V.L. min.	
			880	885	5	5	.02	.03	Mass. chl. sch. V.L. min.	
			885	890	5	5	.05	.06	Granitized bx + min.	
			890	895	5	5	.05	.02	Carb. chl. sch.	
			895	896	1	1	.01	.02	Chl. sch. No min. for Ni. background.	
		END OF HOLE @ 977'								
		<i>Ed McNamee</i> HOLLINGER MINES LIMITED TIMMINS, ONTARIO								

Location of Collar from #1 Post of P-91795

West 780'  
South 30'

FORM S22

**DIAMOND DRILL REPORT**

HOLE NO. LV-20

NORTH XL 8S at 2E of B.L. (10E)

COMMENCED Sept. 12, 1974

EAST \_\_\_\_\_

FINISHED Sept. 16, 1974

ELEV. \_\_\_\_\_

PURPOSE OF \_\_\_\_\_

AZIM. \_\_\_\_\_

HOLE \_\_\_\_\_

DIP Collar 45°

PROPERTY LOVELAND TOWNSHIP - #2 GROUP

200' - 43°

Claim P-91795

Loveland Township

FROM	TO	DESCRIPTION	CORE SAMPLES					DESCRIPTION OF SAMPLE
			FROM	TO	RECOV.	WIDTH	ASSAY	
0	154	Casing.					Cu Ni	
154	180	Granitized, sil., chloritic, andesite.	280	282	2	2	Tr. .01	Dk chl. granitized, minor Po.
			282	283	1	1	.01 .01	3" heavy Po.
180	192	Anorthositic gabbro - upper contact	283	285	2	2	Tr. .01	Dk chl. bx + Po.
		ground, lower contact 80° to C.A.	285	290	5	5	Tr. .01	Dk gr. bx. V.L. min.
			290	295	5	5	Tr. Tr.	" " "
192	250	Highly granitized, micaceous, chloritic andesite. Banding 30° to C.A.	295	297	2	2	Tr. .01	Minor Po.
			297	300	3	3	Tr. .01	Incr. in Po.
			300	305	5	5	.02 .01	Minor Po in chl. box.
250	310	Granitized chloritic breccia - mineralized from 275 on. Darker green in colour.	305	307	2	2	Tr. Tr.	1' dike 1' min. bx.
			307	310	3	3	Tr. .01	Granitized chl. And. + po.
			310	315	5	5	.01 .01	Alt. carb. chl. sch. + po.
			315	320	5	5	Tr. .01	Alt. bx + minor po.
310	375	Highly sil. lt. col. granitized breccia. Fine Po. Mineral in the granophyric str., also in chloritic matrix. Banding at 30° to C.A.	320	323	3	3	Tr. .01	2' qtz + alt. bx.
			323	325	2	2	.02 .01	Diss. Po in section.
			325	330	5	5	.01 .01	Diss. Po in section.
			330	335	5	5	.01 .01	" "
			335	340	5	5	Tr. .01	" "
		Web replacement usually barren.	340	345	5	5	.02 .01	" "
			345	350	5	5	.01 .01	" "
			350	355	5	5	.01 .01	" "
		END OF HOLE - 375'	355	360	5	5	.02 .01	Best min. sect. Po + minor chalc
			360	365	5	5	Tr. .01	Diss. Po throughout section.
			365	370	5	5	Tr. .01	" "
			370	375	5	5	.01 .01	" "

*L. J. MacKenzie*  
HOLLINGER MINES LIMITED

Location of Collar from #2 Post of P-355031 North 160'  
West 505'

### DIAMOND DRILL REPORT

HOLE NO. LV-22 (Lower 123')  
 COMMENCED September 18, 1974  
 FINISHED October 8, 1974  
 PURPOSE OF \_\_\_\_\_  
 HOLE \_\_\_\_\_

FORM 522

NORTH XL 7S @ 13 E  
 EAST (500' E of B.L.)  
 ELEV. \_\_\_\_\_  
 AZIM. Grid West  
 DIP Collar 65°; 200' - 66°  
400' - 68°; 600' - 65°;  
800' - 64°; 1000' - 64°; 1200' - 64°

PROPERTY LOVELAND #11 (Driftex Option)

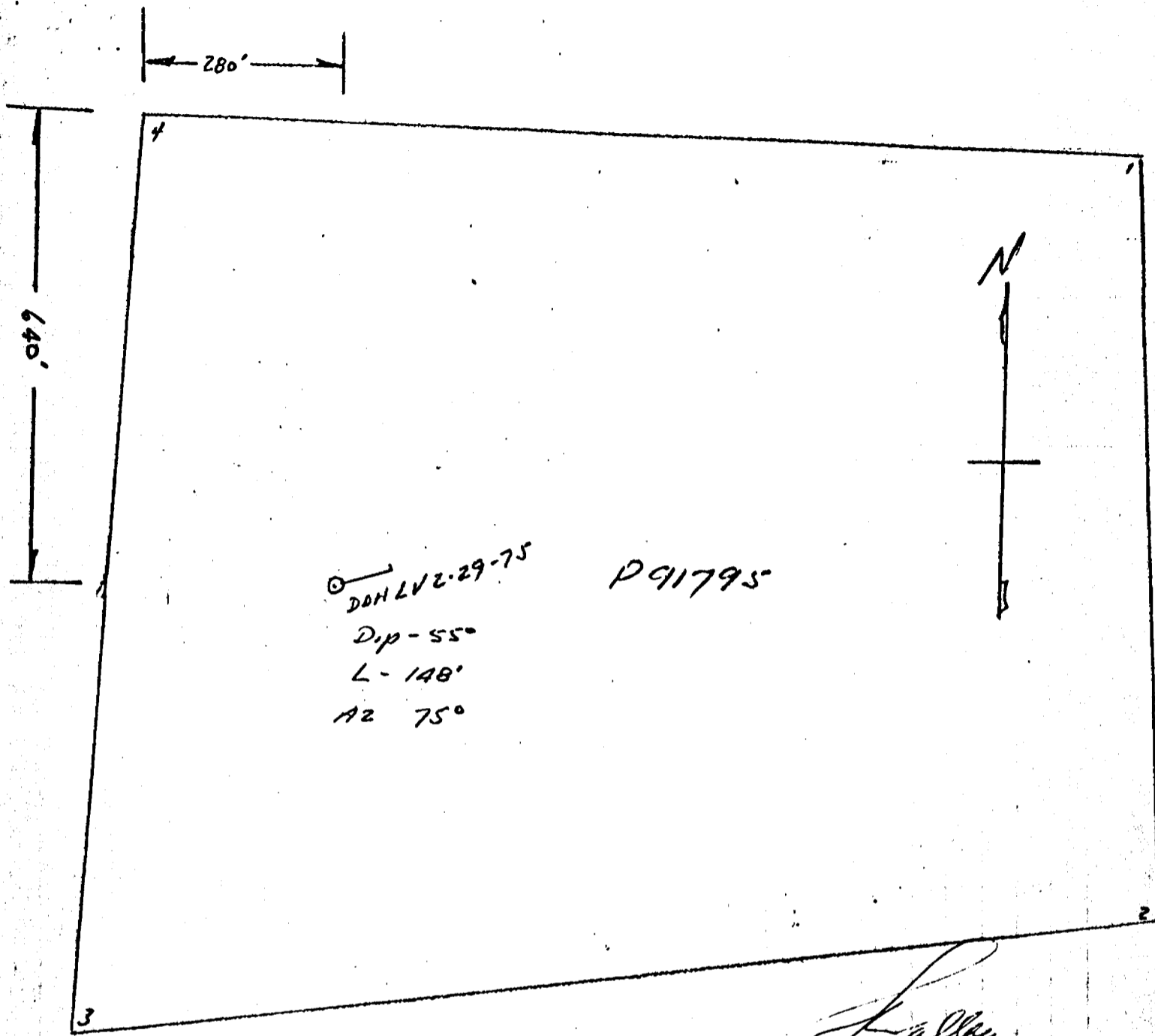
Claim P-91795

Loveland Township, Ont.

FROM	TO	DESCRIPTION	CORE SAMPLES					DESCRIPTION OF SAMPLE
			FROM	TO	RECOV.	WIDTH	ASSAY	
1379	1423	Silicified chloritic rock - serpentinite? Chiefly silica. Rock is blue grey in color.	1375	1378				Dk gr. chloritic section min. Po + minor chalco.
1423	1502	Granitized Andesite, becoming highly granitized and considerable development of brown mica.						
		END OF HOLE @ 1502'						
		<i>EP M. King</i> HOLLINGER MINES LIMITED TIMMINS, ONTARIO						

#91-77

Loveland Twp.



*F. Allen*  
 HOLLINGER MINES LIMITED  
 TIMMINS, ONTARIO

PLAN SHOWING LOCATION OF  
 DDH LV2-29-75

LOVELAND TOWNSHIP

SCALE 1" = 200

DIA of Core 1.44"

Wire Line B.Q.

START DEC 5/75

FINISH DEC 14/75

CONTRACTOR: BRIDLEY BROS  
 Timmins

NORTH XL 13S  
 EAST 5+50E  
 ELEV. Surface  
 AZIM. Grid East (75°)  
 DIP Collar:-55°; 200':-52.5°; 400':-47°; 600':-43°; 800':-41.5°

*Location of Collar From #4175*

*5640'  
E 280' P91795*

# DIAMOND DRILL REPORT

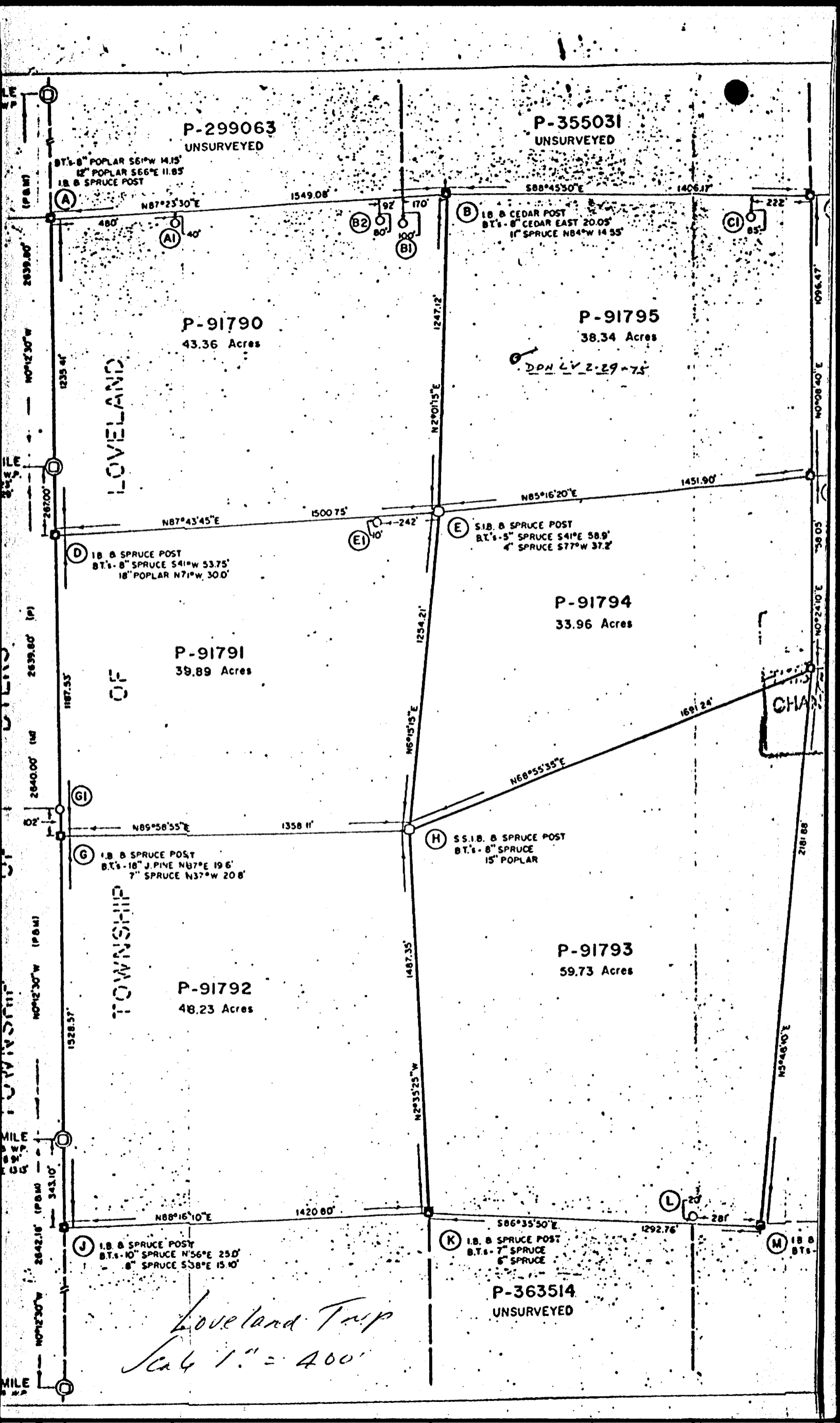
HOLE NO. \_\_\_\_\_  
 COMMENCED December 5, 1975  
 FINISHED December 14, 1975  
 PURPOSE OF HOLE to test whether Cu-Ni zone offset by fault and whether steep S plunge is real.  
 Drilled by: Bradley Bros.

LOVELAND #2 GROUP  
 Loveland Township BQ Core

FROM	TO	DESCRIPTION	CORE SAMPLES					DESCRIPTION OF SAMPLE
			FROM	TO	RECOV.	WIDTH	ASSAY	
0'	120'	OVERBURDEN - casing.						
120'	148'	ALTERED ANDESITE TUFF to LAPILLI TUFF - fair- to medium-grained; olive-grey largely as result of predominant matrix of chlorite, sericite(?) alteration products in which are scattered white feldspar grains and a few bluish quartz crystals; the unit is cut by numerous cross fractures @ 40° and 60° to C.A. respectively - many of these are filled with narrow white quartz stringers, with local salmon pink feldspar edges, and numerous drusy quartz vugs; narrow intrusive(?) section from 124.1' to 124.6' featuring small white felted feldspar laths in a dark green chloritic matrix - this section and that from 133.3' to 139' are weakly magnetic in contrast to rest of unit which is non-magnetic. The section from 133.3' to 139' is finer-grained, locally brecciated, and similar to the unit below. It is cut by hairline fractures (subparallel to the C.A. and to a narrow seam of bluish quartz) which carry a fair amount of pyrite and traces of pyrrhotite.						

*[Signature]*  
 HOLLINGER MINES LIMITED  
 TIMMINS, ONTARIO





P-299063  
UNSURVEYED

P-355031  
UNSURVEYED

P-91790  
43.36 Acres

P-91795  
38.34 Acres

LOVELAND

DDN LV 2-29-75

P-91791  
39.89 Acres

P-91794  
33.96 Acres

TOWNSHIP

P-91792  
48.23 Acres

P-91793  
59.73 Acres

P-363514  
UNSURVEYED

Loveland Twp  
Scale 1" = 400'

BT's - 8" POPLAR S61°W 41.5'  
12" POPLAR S66°E 11.85'  
18" SPRUCE POST

18" CEDAR POST  
BT's - 8" CEDAR EAST 20.05'  
1" SPRUCE N84°W 14.35'

18" SPRUCE POST  
BT's - 8" SPRUCE S41°W 53.75'  
18" POPLAR N71°W 30.0'

5 1/8" SPRUCE POST  
BT's - 5" SPRUCE S41°E 58.9'  
4" SPRUCE S77°W 37.2'

18" SPRUCE POST  
BT's - 18" J. PINE N87°E 19.6'  
7" SPRUCE N37°W 20.8'

5 1/8" SPRUCE POST  
BT's - 8" SPRUCE  
15" POPLAR

18" SPRUCE POST  
BT's - 10" SPRUCE N56°E 25.0'  
8" SPRUCE S38°E 15.10'

18" SPRUCE POST  
BT's - 7" SPRUCE  
6" SPRUCE

18" BT's

(P&M)

(P)

(P&M)

(P&M)

(P&M)

(A)

(D)

(G)

(J)

(B2)

(B1)

(E1)

(H)

(K)

(C1)

(M)

(L)

1096.47

59.05

2181.88

3,006.40

2639.00'

1235.41'

2670.00'

2639.60'

2640.00'

2642.16'

2642.16'

2642.16'

1549.08'

588°45'30"E

1406.17'

N87°25'30"E

480'

40'

92'

80'

100'

222'

85'

1247.12'

N2°01'15"E

N87°43'45"E

1500.75'

242'

N85°16'20"E

1451.90'

1234.21'

N6°15'15"E

N68°55'35"E

1681.24'

N85°58'55"E

1358.11'

1487.35'

N2°35'25"W

N88°16'10"E

1420.80'

S86°35'50"E

1292.76'

281'

CHAS