



42A12NE0648 63.1830 ROBB

INTRODUCTION

During the period from February 26, 1964 to June 18, 1964, a Crone method dual frequency survey was conducted by Mespil Mines Limited of 1705 Victory, 80 Richmond Street, West, Toronto, Ontario for Cincinnati-Porcupine Mines Limited of the same address on a portion of their large group of claims in Robb township.

LOCATION OF CLAIMS

Fifty-five claims, located in north central Robb township, Porcupine Mining Division, Ontario are numbered as follows:

P. 54078,79, P. 54256,57,58,59,60,61,62,71,72,73,74,75,76,77,78,79,
P. 54287,88, P. 54405,06,07,08,09,24,25,26,27,28, P. 54717,18,19,20,
P. 54721, P. 55453,54,55,56,57,58,80,87,89,90, P. 55528,29,30,31,
P. 55537,38,40,55,56,57.

The property lies approximately twenty miles north west of Timmins and three miles west of the Kamkotia Mine.

ACCESS

Access to the group is by way of Mespil's Robb-Loveland access road which turns off of highway 576 just north of Kamiscotia Lake. This is followed to Half Moon Lake where another bush road takes off and skirts the south shore of the lake and then swings north west through the center of the claim group.

The majority of the work was done from Mespil's permanent base camp just north of Kamiscotia Lake. The western most portion of the group was covered from a semi-permanent camp established along

the Kamiscotia River near its junction with Loveland Creek.

PREVIOUS WORK

This group of claims with the exception of the northern most 15 were held by Dominion Gulf Company as their Robb I group.

Dominion Gulf performed a considerable amount of work on this group having carried out magnetometer, vertical E.M., geology, limited geochemistry and diamond drilling, (4holes). No encouraging results whatsoever were obtained and the ground was dropped and allowed to come open.

The complete area has also had two combined magnetic-electromagnetic airborne surveys.

Aeromagnetic surveys flew it with N-S flight lines and 1/4 mile spacing for Mr. B.W. Lang in 1957.

Hunting Survey Corporation flew the same area with 1/8 mile flight line spacing in a NE-SW direction for Mespi Mines Limited in May 1964.

GEOLOGY

Most of the property is swampy and covered by thick deposits of clay and gravel overburden.

Three rock types can be seen on the small areas of outcrop, greenstone, gabbro and granite.

The shearing and lineation is E-W and is mostly confined to the greenstone. Shearing stresses applied to this rock have resulted in chlorite schists.

In all of the four holes drilled by Dominion Gulf andesite was the only rock type encountered.

TYPE AND METHOD OF SURVEY

A Crone dual frequency (480 - 1800 cps) transceiver unit was used for the survey. The work was carried out using an in-line method with a coil separation of 300' with readings taken at 100' intervals. Low frequency readings 480 cps were taken only when the high frequency readings 1800 cps showed anomalous.

The dip angles shown on the plan are the resultant angles and are plotted at the mid-point between the two coils.

A total of 57.5 miles of line were cut and 2838 stations were read with the instrument.

SURVEY RESULTS AND RECOMMENDATIONS

No conductive responses were obtained that can be attributed to bedrock conductors.

There were a few areas of anomalous high frequency (1800 cps) readings but these showed either very weakly or were washed out completely by the low frequency (480 cps).

Due to the strategic location of this ground further geophysical work possibly an induced polarization survey is recommended. Induced polarization (IP) techniques are the only methods devised to-date which are suitable for the detection of discontinuous or disseminated sulphides at overburden depths encountered in this area.

Respectfully submitted

MESPI MINES LIMITED



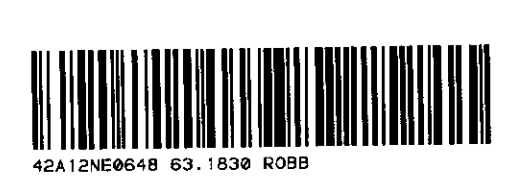
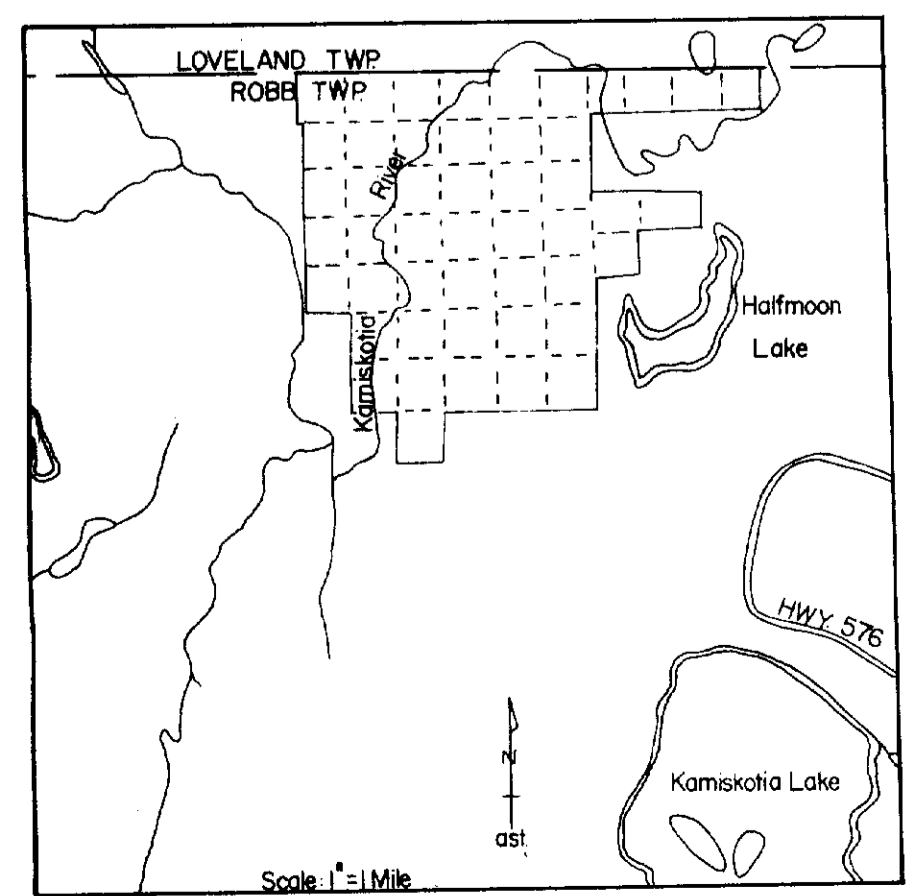
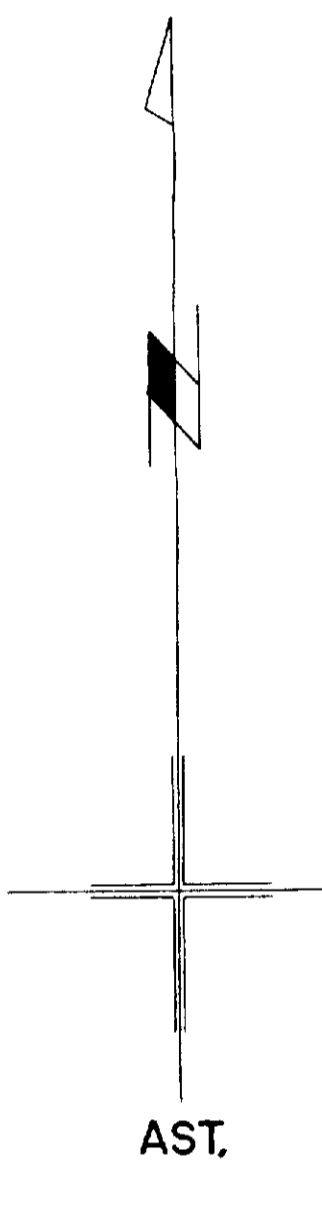
W.E. Nyman
Exploration Manager

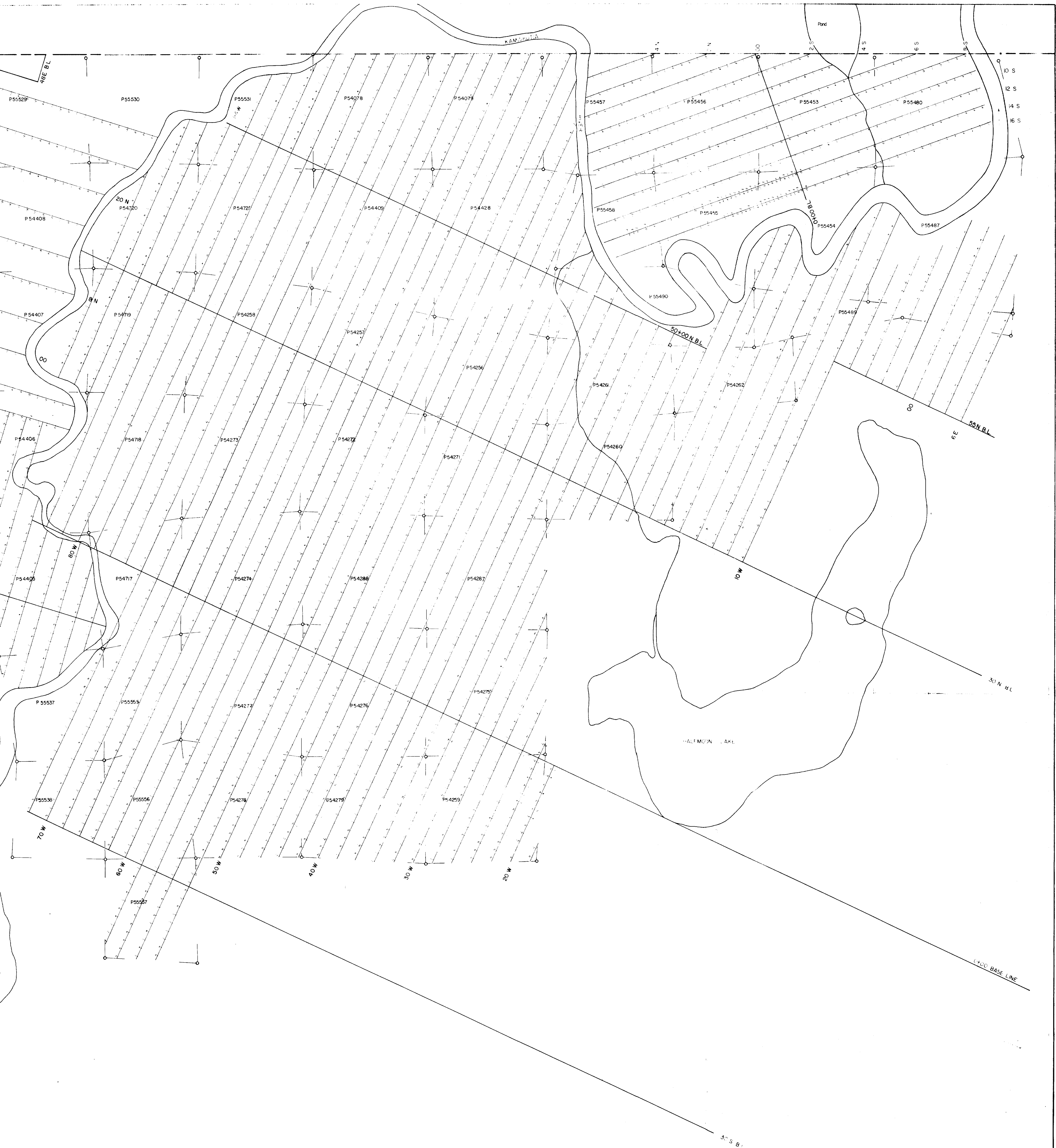
WEN/jf

LOVELAND TWP
ROBB TWP

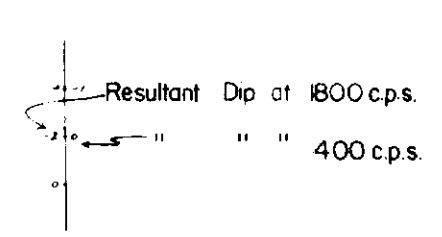
30 100 N BL

KAMISCOLA





CINCINNATI-PORCUPINE MINES LTD.
ELECTRO-MAGNETIC SURVEY
ROBB TWP.
INSTRUMENT: CRONE JEM.
DUAL FREQUENCY
IN-LINE METHOD
COILS 300' APART
MAP SCALE: 1" = 400'
LEGEND



Approved by *W.E. Pijman*
SURVEY DATE: April 10/64 to June 18/64.