

exhibits fair conductivity characteristics excepting for the central part which is very poor. There is no magnetic response over the anomaly.

Anomaly EM12 is 300 feet or less in length, very narrow in width and exhibits fair conductivity. It is located at the nose of a moderate magnetic closure and immediately east of a diabase dike.

All the anomalies strike in the northwest-southeast quadrant.

Respectfully submitted,

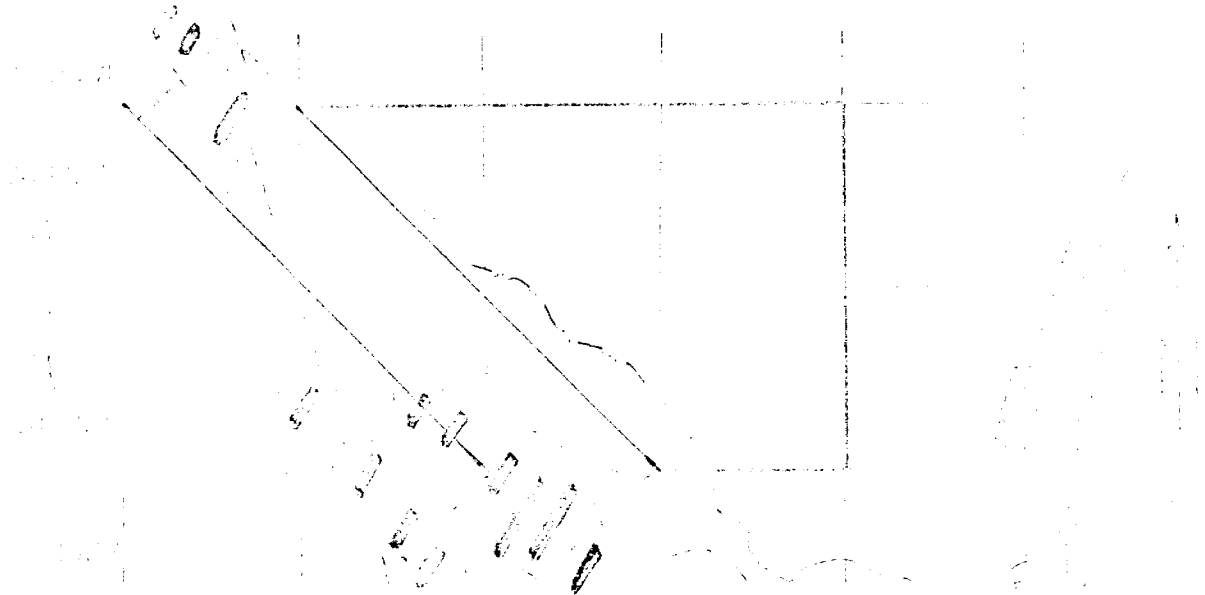
SIMARD, KNIGHT & ZUROWSKI



Michael Zurowski, B.Sc., P.Eng.

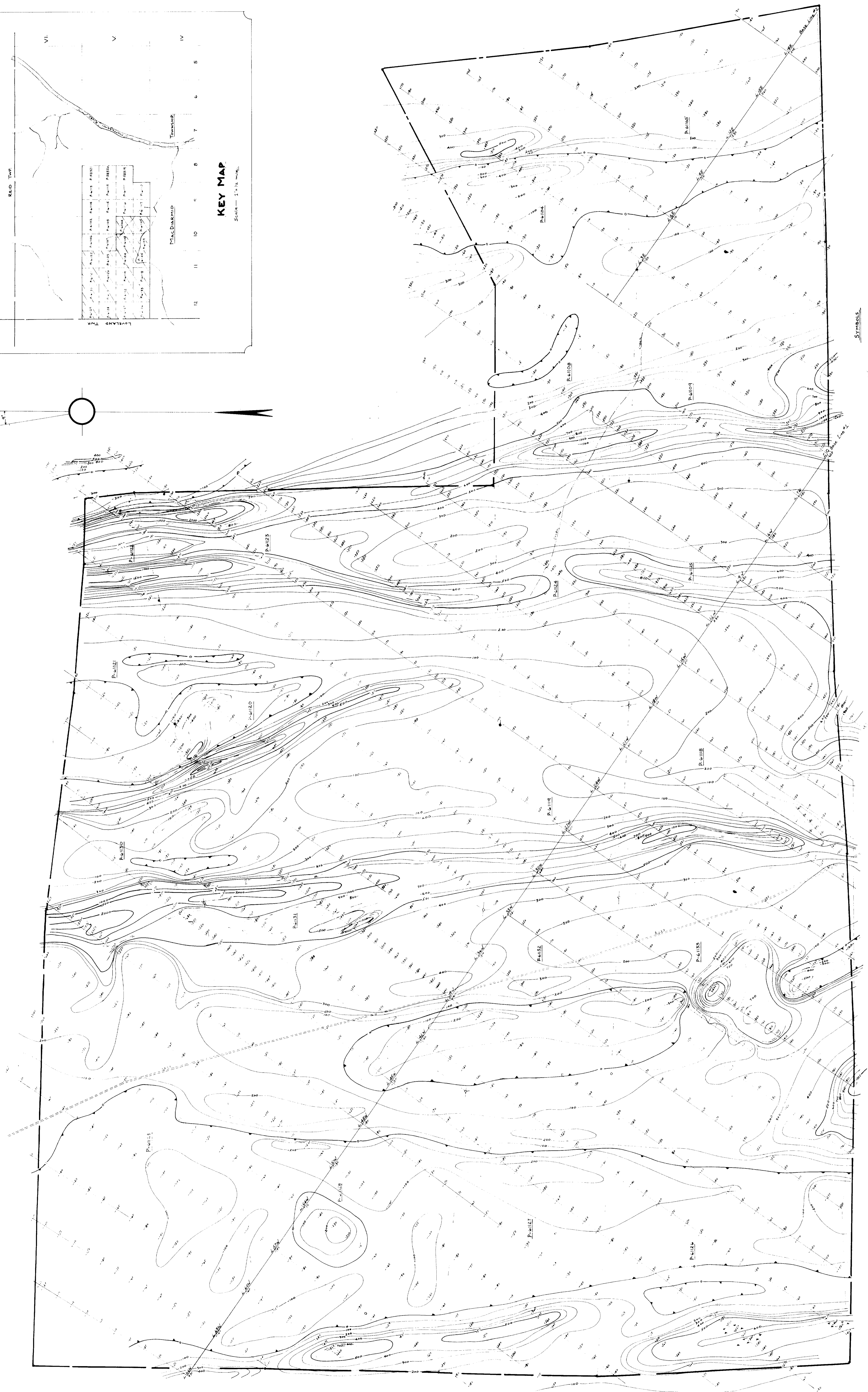
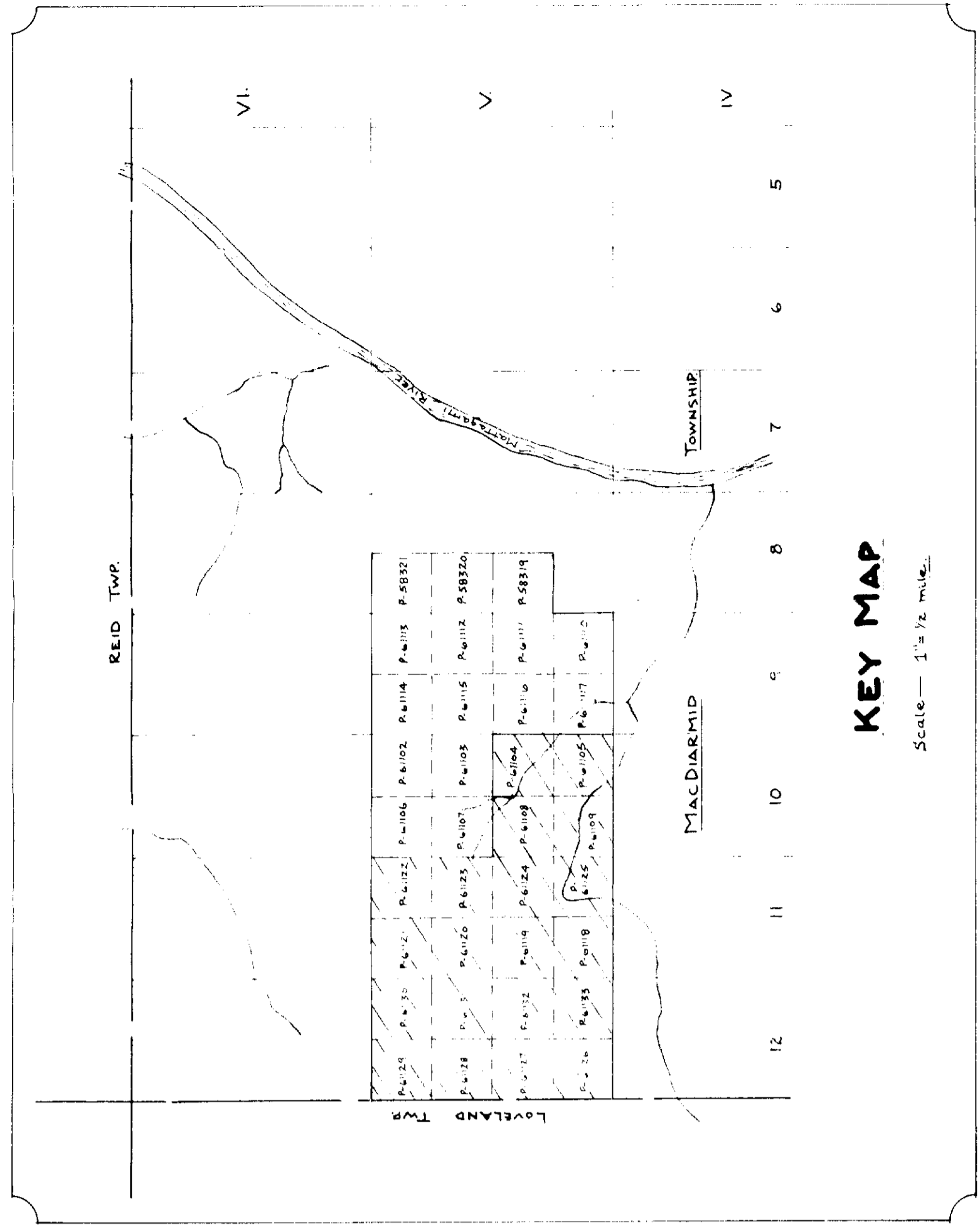
Toronto, Ontario
November 2nd, 1964.

LOT 12 LOT 11 LOT 10 LOT 9 LOT 8

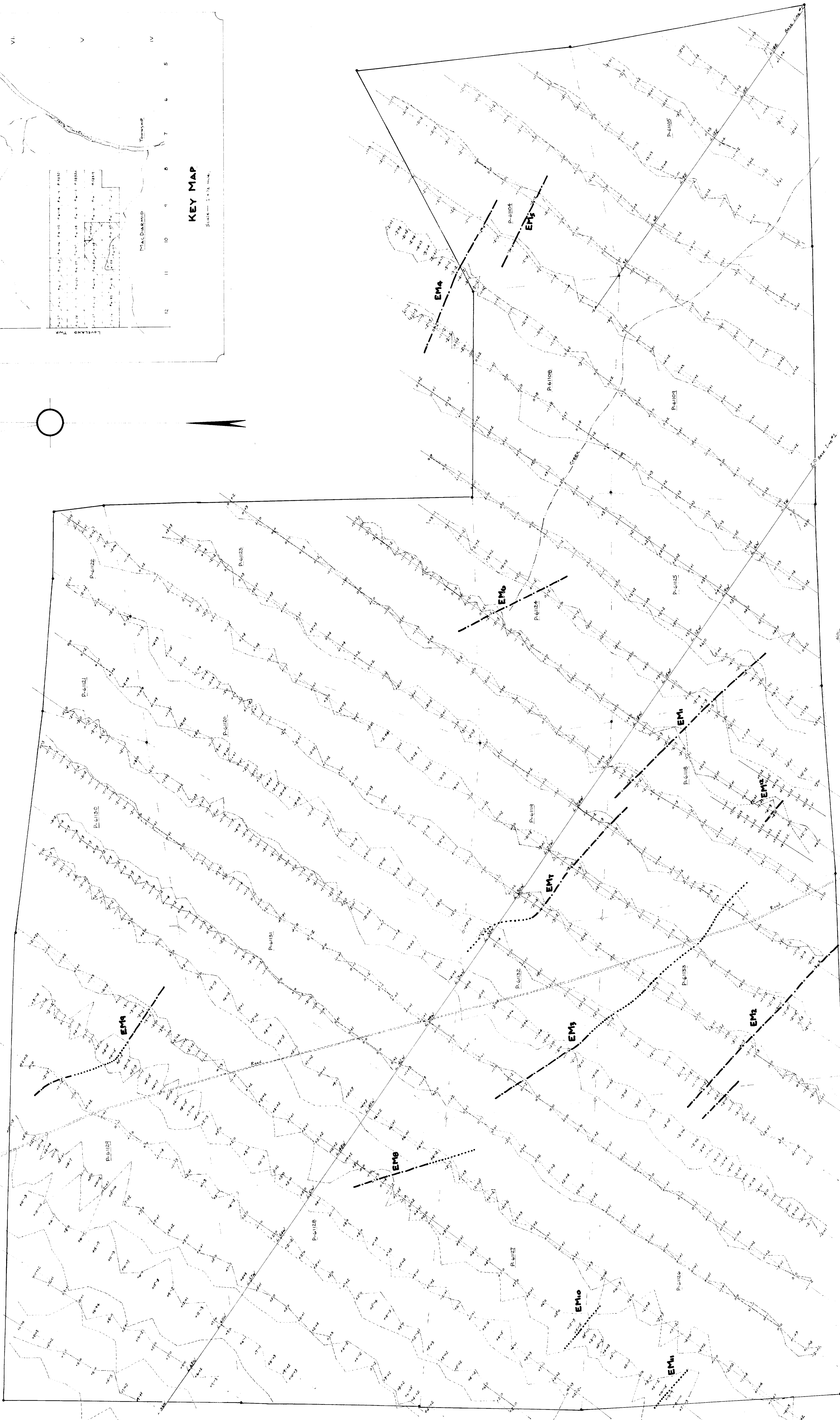
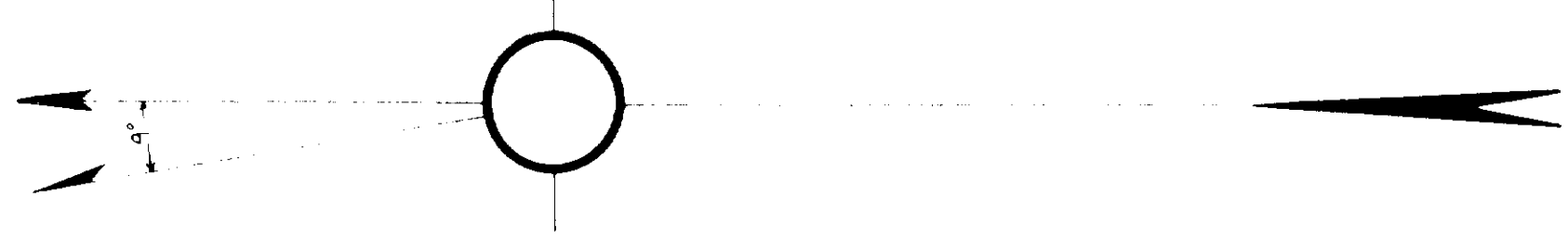
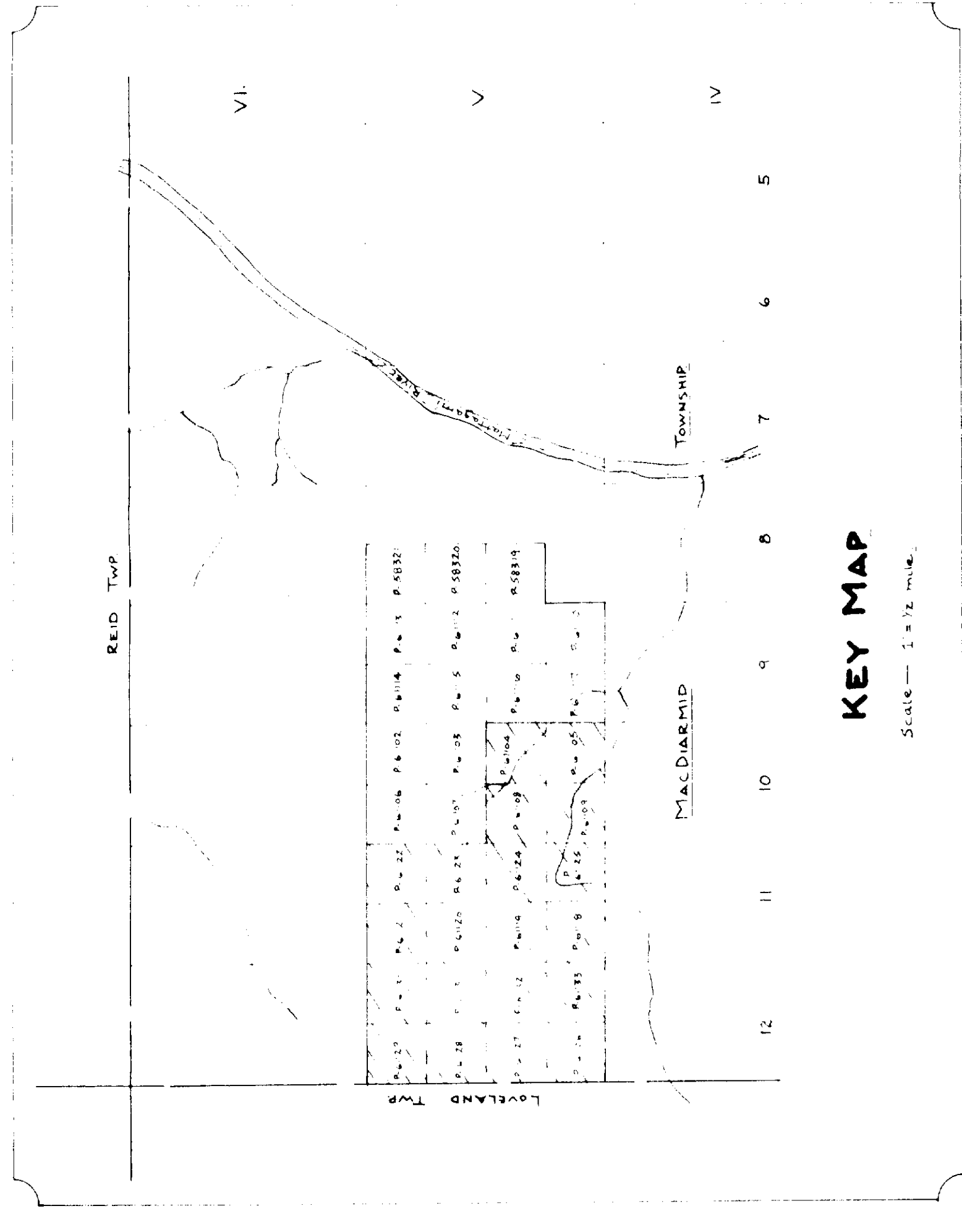


NORTH NADKOP NICKEL MINES LTD.

MANAGER'S OFFICE PROPERTY.



SYMBOLS
 K - Kamin
 F - Field
 I - Inverse
 S - Station

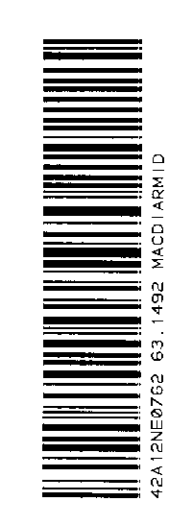


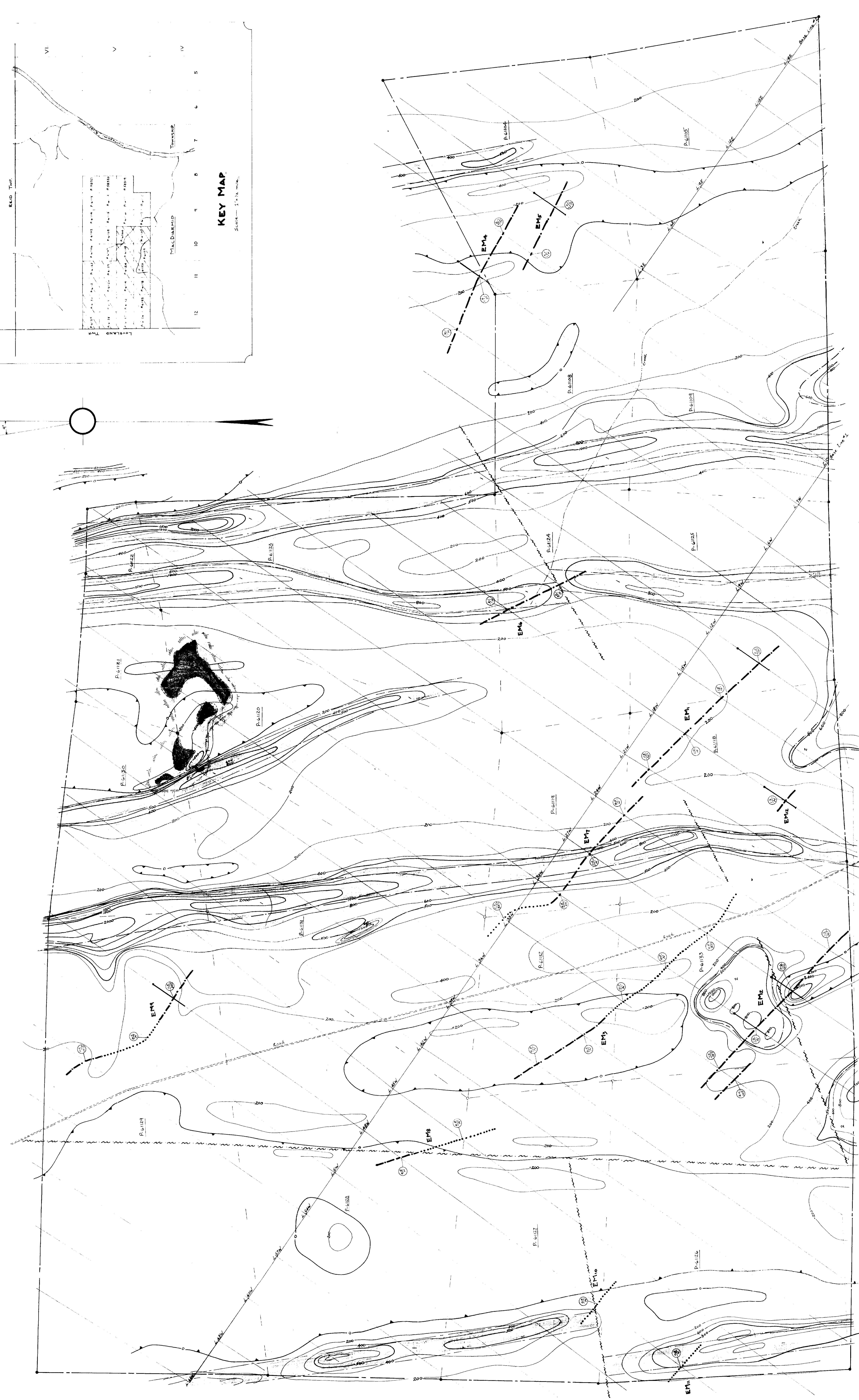
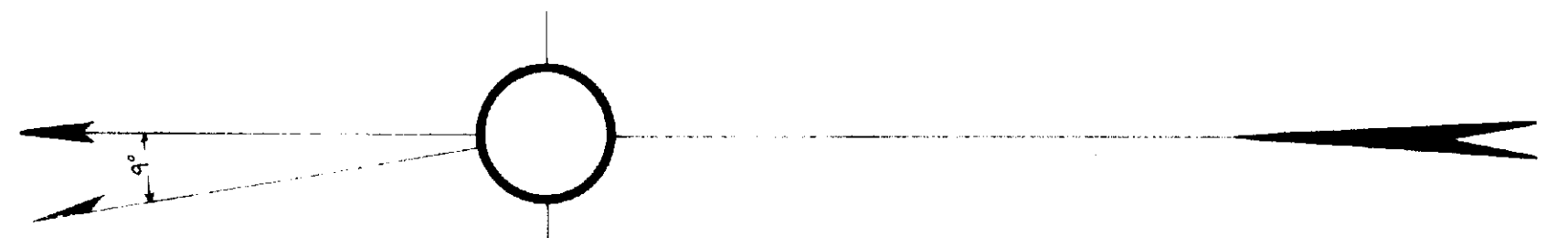
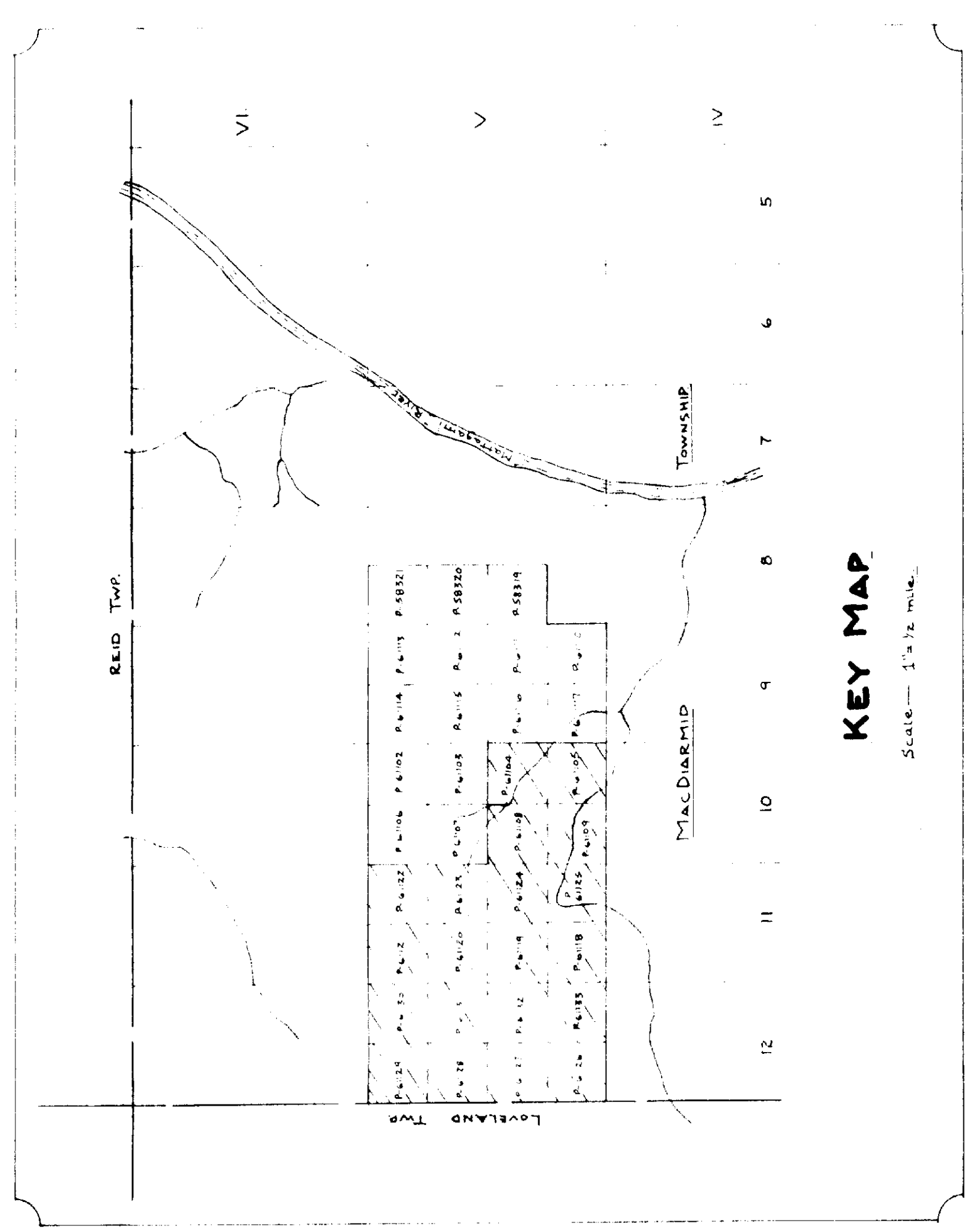
SYMBOLS

- In phase component anomaly (high positive to left of line)
- Out of phase component anomaly (low negative to left of line)
- Out of phase component of anomaly (high positive to right of line)
- Profile number, 100 percent with claim line
- Axis of Electromagnetic Anomaly (dashed line indicates definite anomaly)
- Claim Number

Map of North Rankin Nickel Mines, Ltd. of Ontario
 Property of P. H. and S. H. Ltd. of Ontario

531422





SYMBOLS

- Magnetic line
- Axis of Electromagnetic Anomaly - the symbol (⊙) denotes north of 20°
- 4 x 4 ft. magnetic and appropriate magnetometer or magnetophone readings
- Geological Contour - topographic contour
- Fault - Fault
- Proposed Diagonal Joint - Joint
- Claim Number

GEOLOGICAL LEGEND

- Quartz Diabase
- Gabbro, Peridotite or Magnetic Lava
- Basalts and Volcanics

331492

