



42A12NE0782 30 LOVELAND

010

Diamond Drilling

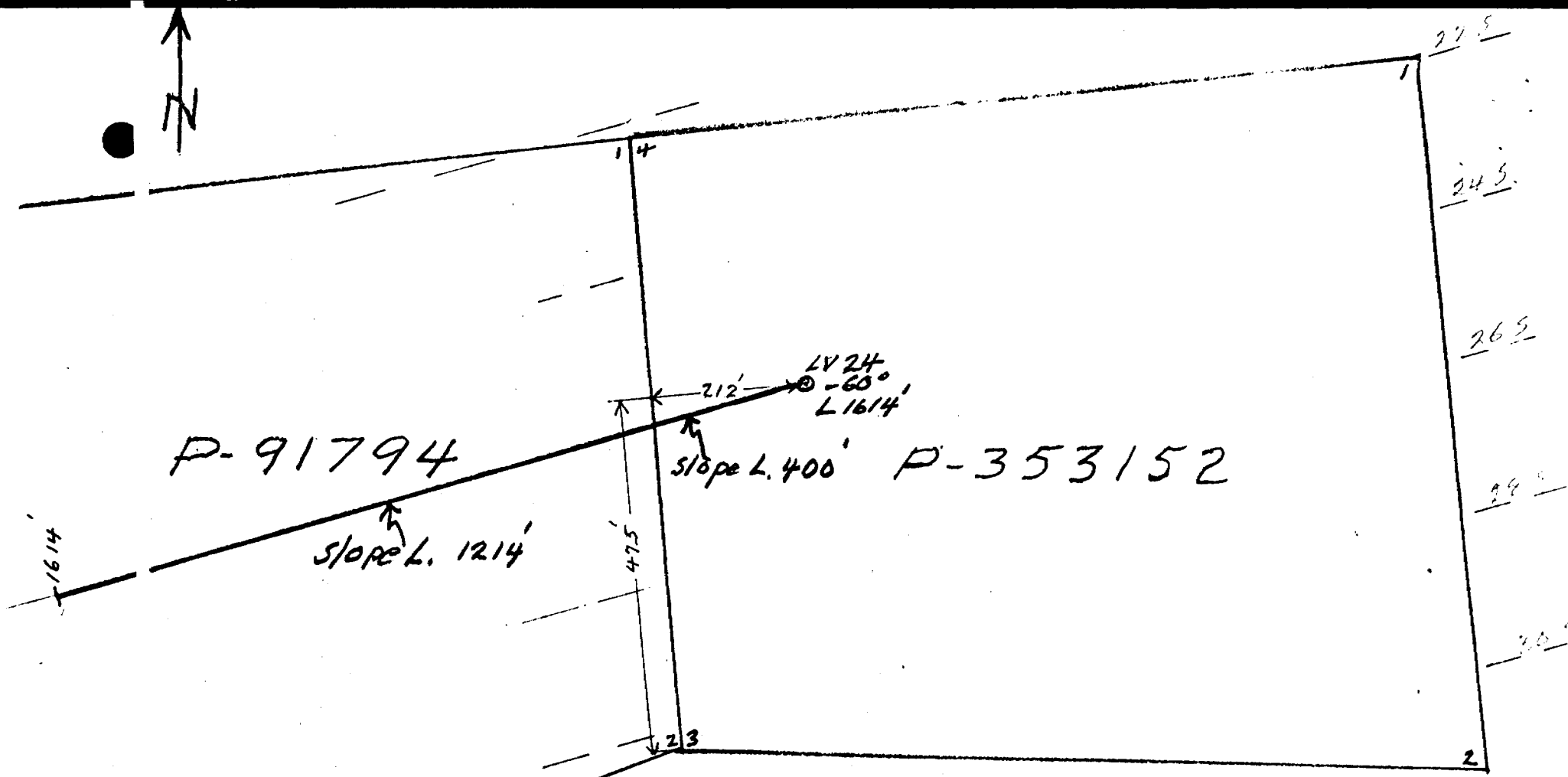
Township of LOVELAND

Report NO: 30

Work performed by: Hollinger Mines Limited

Claim NO	Hole NO	Footage	Date	Note
P 353152	#LV-24-75	1614'	Mar/75	(1)

Notes: (1) 80/75



PLAN OF DDH # LV-24
 claim P-353152, Loveland Twp.
 Scale - 1" = 200'

Contractor
 Bradley Bros Ltd.
 BQ Core Dia 1 13/16"
 (Wire Line)
 Mar 5 - April 10, 1975

W. H. Hansen
 HOLLINGER MINES LIMITED
 TIMMINS, ONTARIO

DIAMOND DRILL REPORT

HOLE NO. LV-24-75

NORTH _____
 EAST _____
 ELEV. _____

 DIP _____

PROPERTY DRIFTEX OPTION - LOVELAND #11
 Loveland Township

COMMENCED _____
 FINISHED _____
 DEPTH OF _____
 HOLE _____

FROM	TO	DESCRIPTION	CORE SAMPLES					DESCRIPTION OF SAMPLE
			FROM	TO	RECOV.	WIDTH	ASSAY	
		432-435 - fault zone - gouge and highly sheared section. Shearing and banding at 45° to core.						
435	455	Grey massive chert, white to grey green in colour, occ. pyrr. rare chalco. (cherty tuff?). Minor chl. in section.						
455	531.5	Banded granitized seds.; banding 20° to C.A. Grey with white bands, very siliceous occ. granite dike (455-468) (475.2-477.4).						
531.5	709	Granitized dk. gr. Andesite, considerable mica dev. Highly granitized sections with granophyric material. From 610 to 648 less granitization black gr. micaceous andesite. (648-650) 100% granophyric material, white speckled with biotite.						
709	753	Qtz eye, granite, coarse grained with small inclusions of amphibolitized andesite. Contacts 45° to core axis.						
753	778	Chloritic, granitized, andesite. Occ. chalco + Po.						
778	878.5	Chiefly granophyre, with sm. inclusions becoming fine grained and cherty from 785						

DIAMOND DRILL REPORT

HOLE NO. LV-24-75

NORTH _____
 EAST _____
 ELEV. _____

 DIP _____

PROPERTY DRIFTEX OPTION - LOVELAND #11

COMMENCED _____
 FINISHED _____
 SURFACE OF _____
 HOLE _____

Loveland Township

FROM	TO	DESCRIPTION	CORE SAMPLES					DESCRIPTION OF SAMPLE
			FROM	TO	RECOV.	WIDTH	ASSAY	
		to 810. Small blebs of po + chalco, carbonatized shear planes, additional calcite strcs also; banding chiefly at sm. angle to core axis.						
878.5	1030.8	At 878.5, after a little broken core, we enter a narrow andesitic unit that varies from medium to dark green to blackish and is irregularly mixed with narrow horizons of cherty, sometimes granophyric material flecked with biotite. The rock is locally banded with the introduction of the narrow cherty horizons, at around 20° to the core. Within the andesite, the lighter coloured sections are generally carbonatized to some extent. Megascopically, the andesite appears to be composed of largely feldspar chlorite and biotite - metamorphosed.						
		At 903.7, return to the cherty type unit, which in general here is not notably granophyric. The rock varies from white to grey to brownish grey in colour and is fairly well speckled with biotite.						
		Then from 951.2 to 961.6, there are scattered, dark green andesitic bands again,						

DIAMOND DRILL REPORT

HOLE NO. LV-24-75

NORTH _____
 EAST _____
 ELEV. _____

 DIP _____

COMMENCED _____
 FINISHED _____
 PURPOSE OF _____

PROPERTY DRIFTEX OPTION - LOVELAND #11

Loveland Township

FROM	TO	DESCRIPTION	CORE SAMPLES					DESCRIPTION OF SAMPLE
			FROM	TO	RECOV.	WIDTH	ASSAY	
		separated by cherty, biotitic material.						
		Similarly, from 988.6 to 1012, andesitic material separated by narrow cherty horizons						
		Some granitic material along the core from 1010.6 to 1011.6 plus a granitic dykelet from 1012 to 1015.7. The upper contact of the granite is nearly along the core, lower contact at 40°. The granite is fairly coarse grained with pinkish to white feldspar and clear to bluish and grey phenocrysts of quartz. In general there is a fairly high biotite-chlorite-amphibole content here as well. Trace of pyrrhotite.						
		At 1015.7, return to the cherty type unit, flecked with biotite. This zone continues up to 1030.8, where the biotite, ± chlorite produces a mottled effect in the chert.						
		Lower contact with a quartz stringer, nearly normal to the core.						
1030.8	1614	Contact to andesite - the first few feet of which (to 1040.3) is brownish, carbonatized and crudely banded at about						

DIAMOND DRILL REPORT

HOLE NO.

LV-24-75

5.

NORTH _____
 EAST _____
 ELEV. _____

 DIP _____

PROPERTY DRIFTEX OPTION - LOVELAND #11

COMMENCED _____
 FINISHED _____

 HOLE _____

Loveland Township

FROM	TO	DESCRIPTION	CORE SAMPLES					DESCRIPTION OF SAMPLE
			FROM	TO	RECOV.	WIDTH	ASSAY	
		45° to the core.						
		After 1040.3 the andesite is dark	1030	1035		5		Andesite - very minor po
		green, chloritic with some coarse blocky	1035	1040		5		" minor po tr.cp
		crystals of hornblende and chlorite (after	1040	1045		5		" 3% po
		hornblende?). The andesite is also	1045	1050		5		" 5% po
		granitized, locally speckled with feldspar	1050	1055		5		" 5% po minor cp
		some blotchy type occurrences of grano-	1055	1060		5		" 3% po tr.cp
		phyric material and occasional, narrow	1060	1065		5		" 3% po tr.cp
		granitic dykes.	1065	1070		5		" 3% po very minor cp
		It is within this unit that we first	1070	1075		5		" 3% po " " "
		start to get some pyrrhotite - generally	1075	1080		5		" 3% po tr.cp
		occurring in irregular blotches and	1080	1085		5		" very minor po
		stringer-like masses. The pyrrhotite is	1085	1090		5		" " " "
		variably magnetic and carries erratic	1090	1095		5		" " " "
		amounts of chalcopyrite.	1095	1100		5		" " " "
		Around 1137.5, the andesite grades	1100	1105		5		" " " "
		very dark green and considerably more	1105	1110		5		" minor po
		chlorite-hornblende rich. The andesite	1110	1115		5		" very minor po
		is still granitized with feldspar and	1115	1120		5		" " " po tr.cp
		possesses a few blotches of granophyric	1120	1125		5		" minor po tr.cp
		material but these features are only						
		locally prominent now. The sulphides						
		here are a bit heavier, and are also more						
		strongly magnetic.						

DIAMOND DRILL REPORT

LV-24-75

6.

NORTH _____
 EAST _____
 ELEV. _____
 GRAVE _____
 DIP _____

PROPERTY DRIFTEX OPTION - LOVELAND #11

Loveland Township

HOLE NO. _____
 COMMENCED _____
 FINISHED _____
 HOLE _____

FROM	TO	DESCRIPTION	CORE SAMPLES					DESCRIPTION OF SAMPLE
			FROM	TO	RECOV.	WIDTH	ASSAY	
		After 1165 there is a marked decrease in the amount of sulphides present and the andesite has an increasing amount of speckled and granophyric sections. Isolated splashes of pyrrhotite, with rare traces of chalcopyrite can be found along the core, although the overall content is very minor.						
			1125	1130		5		Andesite - minor po
			1130	1135		5		" very minor po tr.cp
			1135	1137		2		" " " po
			1137	1140		3		" 10% po minor cp
			1140	1145		5		" 7% po minor cp
			1145	1150		5		" 5% po tr.cp
		From 1270 to 1301.5 the ground is quite blocky and there is a good deal of broken core, especially the section 1275-1285.	1150	1155		5		" 15% po minor cp
			1155	1160		5		" 5% po very minor cp
			1160	1165		5		" minor po tr.cp
			1165	1170		5		" very minor po
		After some granitic material at 1306.1 the andesite becomes very dark and chloritic. From here to 1336.6 there is very little granitic or granophyric material, and the rock is notably sheared at a very shallow angle to the core (0-10°). Sulphides are a bit better in this zone - both pyrrhotite and chalcopyrite, with the best mineral along the most strongly sheared section from 1321.2 to 1322.5. The andesite is dark green to dark brownish green, only locally greyer where there is						
			1235	1240		5		Andesite - minor po tr.cp

DIAMOND DRILL REPORT

NORTH _____
 EAST _____
 ELEV _____
 AZIM. _____
 DIP _____

COMMENCED _____
 FINISHED _____
 PURPOSE OF _____
 HOLE _____

PROPERTY DRIFTEX OPTION - LOVELAND #11

Loveland Township

FROM	TO	DESCRIPTION	CORE SAMPLES					DESCRIPTION OF SAMPLE
			FROM	TO	RECOV.	WIDTH	ASSAY	
		some granophyric material.						
		At 1336.6 there is a marked drop in sulphides present and the core becomes quite strongly granitized and granophyric up to 1393.2. There are only scattered sections of dark green andesite here due to the strong granitization. Biotite is also very prominent in this unit.	1305	1310		5		Andesite - minor po tr.cp
			1310	1315		5		" very minor po
			1315	1320		5		" minor po
			1320	1323		3		" 8% po
			1323	1325		2		" minor po
			1325	1330		5		" " "
			1330	1335		5		" 4% po minor cp
		At 1393.2 there is a gradual decrease in the amount of granitization and the andesite becomes darker green and strongly chloritic. With the more chloritic andesite is also the advent of sulphides once more - mostly pyrrhotite with streaks and blebs of chalcopyrite. Some blocky blebs of chlorite, and fair biotite plus local speckling with feldspar in the andesite.	1335	1337		2		" minor po
			1337	1340		3		" neg. sulphides
		At 1429.2, after a narrow dyke of granite, fairly heavy sulphides and some shearing running along the core. These fairly heavy sulphides are noted up to 1431.5 with the core from 1430 to 1431 missing.						
		The only other schistose section with sulphides lies between 1437.6 and 1439.3.						

DIAMOND DRILL REPORT

HOLE NO. LV-24-75

8.

NORTH _____
 EAST _____
 ELEV. _____

 DIP _____

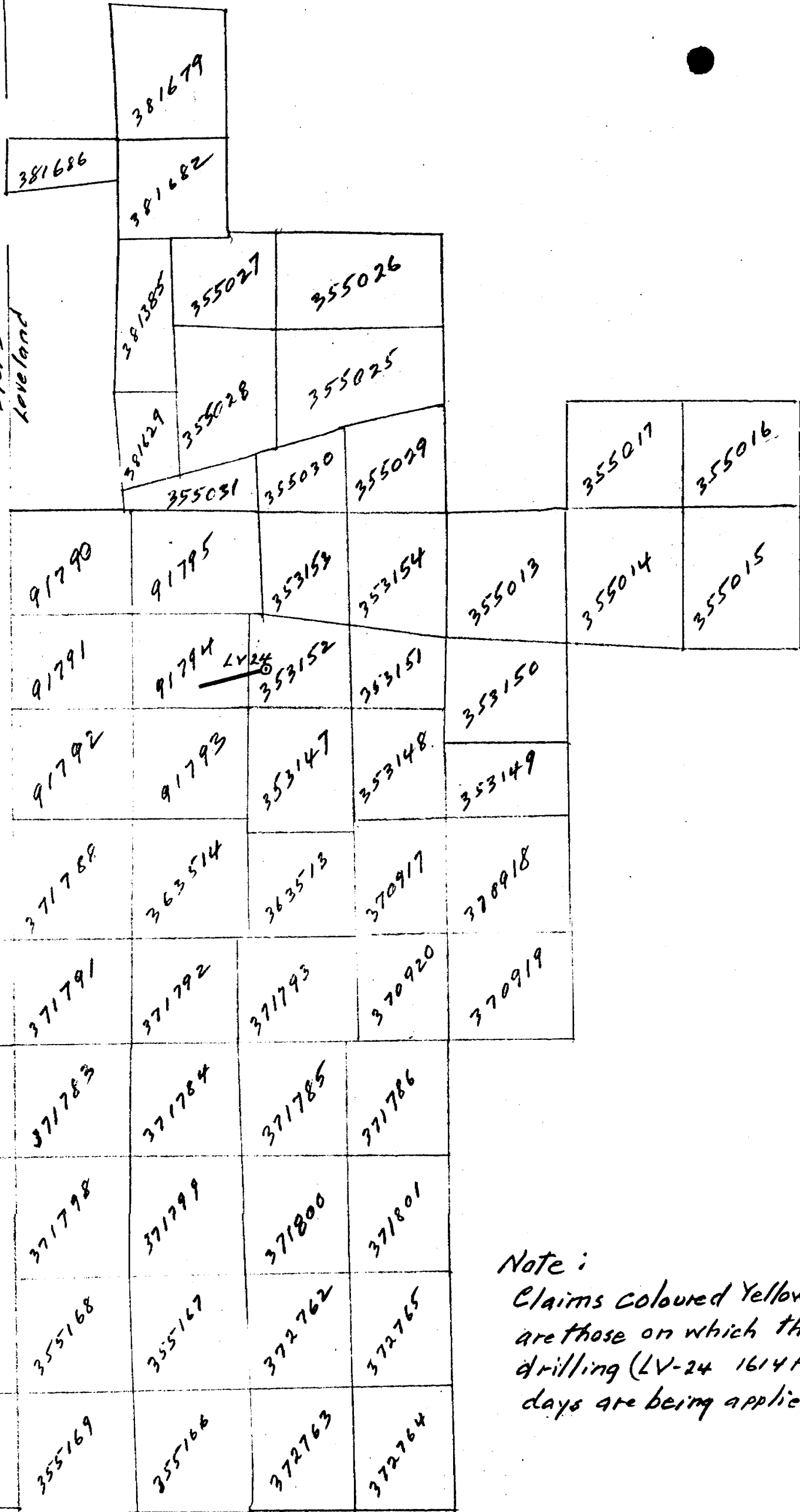
PROPERTY DRIFTEX OPTION - LOVELAND #11

COMMENCED _____
 FINISHED _____
 HOLE _____

Loveland Township

FROM	TO	DESCRIPTION	CORE SAMPLES					DESCRIPTION OF SAMPLE
			FROM	TO	RECOV.	WIDTH	ASSAY	
		Some blocky ground from 1431.5 to 1433.7.						
		There is one box of core mixed up here	1390	1395		5		Andesite - very minor po tr.cp
		from 1410 to 1430, such that when it was	1395	1400		5		" " " " "
		put back together, there appeared to be	1400	1405		5		" 3% po very minor cp
		2 feet missing which was arbitrarily placed	1405	1410		5		" 3% " " " "
		at 1412.7-1413.7 and 1430-1431, due to	1410	1415		5		" trace po
		lack of matching core.	1415	1420		5		" " "
		Around 1447.5, the andesite grades	1420	1425		5		" " "
		lighter in colour - more strongly grani-	1425	1429		4		" minor po very minor cp
		tized, speckled with feldspars, some	1429	1430		1		" 10% po 2% cp
		granophyre plus the horizons of sugary	1430	1432	50%	2		" 10% po very minor cp
		chert flecked with biotite. There is a	1432	1435		3		" very minor po cp
		fairly strong component of biotite	1435	1440		5		" 5% po tr.cp
		throughout this section. Then, after 1497,	1440	1445		5		" neg. sulph.
		the andesite is innundated with granophyric						
		material - most commonly in blotchy to						
		stringer-like masses at 25-35° to the core.						
		From 1544 to 1571, the andesite						
		becomes darker green again with traces of						
		wispy chlorite-epidote(?) alteration						
		running along the core. No sulphides						
		were noted in this section. Both contacts						
		are gradational - the lower change marked						
		by the introduction of more blotchy						

Byers
Loveland



Note:
 Claims coloured Yellow
 are those on which the
 drilling (LV-24 1614 ft)
 days are being applied.

HOLLINGER CLAIMS
 Byers-Loveland TWP.
 Scale - 1" = 20 chains.

Byers - Loveland
 Robb