



42A12SE0169 12 JAMIESON

010

Diamond Drilling

Township of JAMIESON

Report N^o 12

Work performed by: Dominion Gulf Company

Claim N ^o	Hole N ^o	Footage	Date	Note
P 37677	171-56-1	694.0'	Jan/56	
	171-56-12	401.0'	June/56	
P 37625	171-56-2	446.0'	Jan/56	
	171-56-3	601.0'	Jan/56	
	171-56-21	342.0'	Aug/56	
	171-56-24	850.0'	Sept/56	
P 3748 5	171-56-25	835.0'	Oct/56	
P 3748 4	299-56-1	374.0'	Aug/56	
	299-56-2	307.0'	Aug/56	

Notes:

P-37474

L-16.5

P-37485

L-24.0

L-26.5

L-20.5

1
#25

1
#11

1
#14

1
#13

1
#11

1
#21

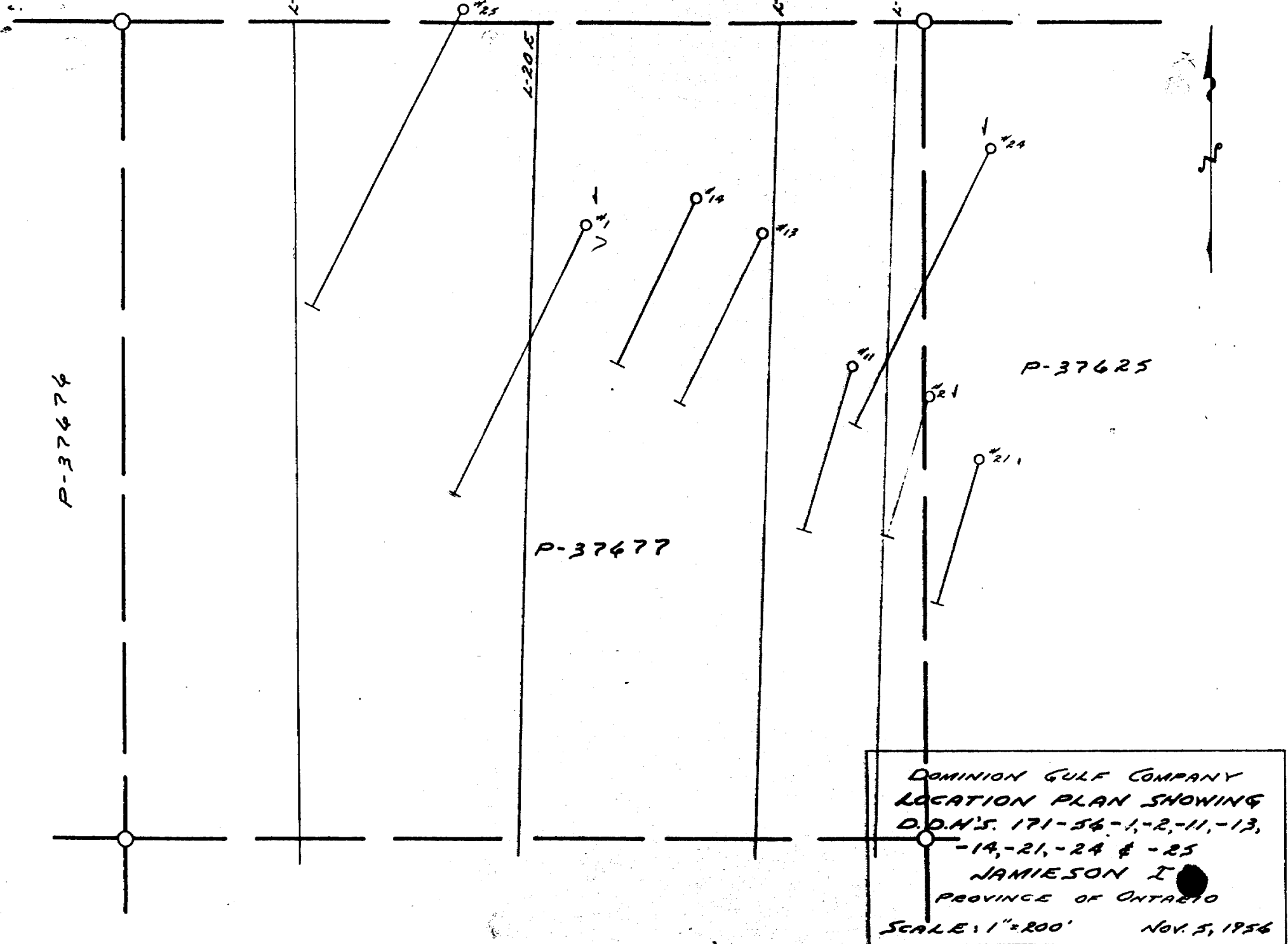
1
#21

1
#24

P-37625

P-37477

DOMINION GULF COMPANY
 LOCATION PLAN SHOWING
 D.O.N.'S. 171-54-1, -2, -11, -13,
 -14, -21, -24 & -25
 JAMIESON I
 PROVINCE OF ONTARIO
 SCALE: 1"=200' NOV. 5, 1956



PROPERTY Jamieson I - Claim No. / P-37677 (694').

HOLE NUMBER 171 56.1

SHEET NUMBER 1

SECTION FROM 0 TO 103.3

DIAMOND DRILL RECORD

LOCATION: LAT. 3+30 South of Base Line

DEP. 0+85 East of L. 20+008

ELEVATION OF COLLAR

DATUM

DIRECTION AT START: BEARING South 25° West.
DIP Collar - 50°, 250' -47°, 500' -44°

STARTED January 10, 1956

COMPLETED January 19, 1956.

ULTIMATE DEPTH 694'

PROPOSED DEPTH

*File
P-37677*

DEPTH FEET	FORMATION	SAMPLE NO	WIDTH OF SAMPLE	GOLD \$	SLUDGE GOLD \$
0-79	Casing - 0-60 Clay, 60-72 Hardpan				
79-85	Andesite - very fine grained, medium green color, few light green fragments.				
82.2-82.7	- fragmental zone, 4% pyrite.				
85-93.7	Fragmental Andesite - light green fragments in darker green, fine grained matrix. Fragments elongated at 60° to core axis.				
85-90	- Altered, pale green color. 20% pyrite occurs in small blebs and disseminated with concentrations in narrow bands.	2240	5.0	0.17	
90-93.7	- Distinct light green fragments. 25% pyrite occurs in small blebs in bands; also fine grained, disseminated.				
93.7-103.3	Andesite - fine grained, medium green, fairly massive. Fragmental from 93.7' to 96'				
103.3-124.7	Fragmental Andesite - light green fragments in fine grained, darker green matrix. Fragment elongated at 45° to 50°.				

NORTHERN MINER PRESS LIMITED, TORONTO-STOCK FORM NO. 501 REV. 8.44

DRILLED BY N. Merrissette Diamond Drilling *at our Larder Lake* *warehouse* SIGNED G. G. MacIntosh.

Drill core is in storage

PROPERTY Jamieson I

HOLE NUMBER 171 56-2

SHEET NUMBER 2

DIAMOND DRILL RECORD

SECTION FROM 103.3 TO 124.7

LOCATION: LAT. _____
 DEP. _____
 ELEVATION OF COLLAR _____
 DATUM _____
 DIRECTION AT START: BEARING _____
 DIP _____

STARTED _____
 COMPLETED _____
 ULTIMATE DEPTH _____
 PROPOSED DEPTH _____

DEPTH FEET	FORMATION	SAMPLE NO	WIDTH OF SAMPLE	GOLD \$	SLUDGE GOLD \$	
					Cu. %	Zn. %
	Pyrite occurs in small massive blebs and disseminated. The disseminated pyrite is very fine grained and tends to be concentrated in narrow bands. $\frac{1}{8}$ " quartz veinlet at 45° at 103.3'. $\frac{1}{8}$ " quartz veinlet at 106.5.					
103.3-105	20% pyrite - fine grained, disseminated and small massive blebs.					
105.-110	25% pyrite- fine grained, disseminated and small massive blebs.					
110-115	30% pyrite - fine grained, disseminated and small massive blebs.	2168	5.0		0.02	0.03
115-120	30% pyrite - fine grained, disseminated and small massive blebs.					
120-122.8	25% pyrite - fine grained, disseminated and small massive blebs.					
122.8-124.7	15% pyrite --fine grained, disseminated and small massive blebs.					

NORTHERN MINER PRESS LIMITED, TORONTO-STOCK FORM NO. 801 REV. 9-44

DRILLED BY N. Morissette Diamond Drilling

SIGNED C. G. MacIntosh.

PROPERTY Jameson IHOLE NUMBER 171 56-1SHEET NUMBER 3

DIAMOND DRILL RECORD

SECTION FROM 124.7 TO 195LOCATION: LAT. _____
DEP _____

ELEVATION OF COLLAR _____

DATUM _____

DIRECTION AT START: BEARING _____
DIP _____

STARTED _____

COMPLETED _____

ULTIMATE DEPTH _____

PROPOSED DEPTH _____

DEPTH FEET	FORMATION	SAMPLE NO	WIDTH OF SAMPLE	GOLD \$	SLUDGE GOLD \$
124.7-150.4	Andesite (sill) - medium to coarse grained, medium green, fairly massive. Few 1/16" seams of fine grained pyrite. 131' - 2" irregular quartz and chlorite at 45°. 132.2 - 2" irregular quartz and chlorite at 25°. 137.3-137.9 - irregular quartz, chlorite and epidote at 50°.				
150.4-151.2	Andesite - very fine grained, medium green amygdaloidal. Contact at 45° at 150.4'.				
151.2-344.5	Andesite - medium to coarse grained, medium green, fairly massive. 153.2 - 1" irregular quartz, chlorite and epidote. 161 - 1 1/2" irregular quartz, chlorite and epidote. 163.2 - 2" irregular quartz and chlorite. 167.5-168.9 Core missing. 166-171 - Core fractured, rusty material on fracture faces. (Weak fault). 172.6 - 3" irregular quartz and chlorite.				
194-195	1 1/2" quartz and carbonate. Weak lineation. 3% pyrite in vein matter and disseminated.	2241	1.0	Nil	

NORTHERN MINER PRESS LIMITED, TORONTO - STOCK FORM NO 501 REV 9/44

DRILLED BY N. Morissette Diamond DrillingSIGNED C. G. MacIntosh.

PROPERTY Jameson I

HOLE NUMBER 171 56-1

SHEET NUMBER 4

DIAMOND DRILL RECORD

SECTION FROM 195 TO 391.6

LOCATION: LAT. _____
 DEP. _____
 ELEVATION OF COLLAR _____
 DATUM _____
 DIRECTION AT START: BEARING _____
 DIP _____

STARTED _____
 COMPLETED _____
 ULTIMATE DEPTH _____
 PROPOSED DEPTH _____

DEPTH FEET	FORMATION	SAMPLE NO	WIDTH OF SAMPLE	GOLD g	SLUDGE GOLD g
	215-324 Coarse grained, massive. Few scattered quartz veinlets.				
	324-344 Medium grained. Few small quartz veinlets.				
	337.2' - 1/4" quartz veinlet containing fine grained pyrite (30%)				
344.5-361.5	Fragmental dacite - light grey elongated fragments in darker coarse textured matrix. Lination at 45°. Visible quartz grains. Slightly carbonatized. Tiny quartz veinlets parallel to lination. Very little disseminated pyrite.				
361.5-374	Andesite - medium grained, fairly massive				
	366.5-369.5 - 3% fine grained pyrite in narrow veinlets.				
374-391.6	Tuffaceous Andesite - very fine grained, light to medium green color. Weak schistosity. Lination at 45° to 50°. Few tiny quartz veinlets parallel to lination. 2% disseminated and massive blebs of pyrite concentrated in narrow bands.				

NORTHERN MINER PRESS LIMITED, TORONTO - STOCK FORM NO. 501 REV. 9-64

DRILLED BY N. Morissette Diamond Drilling

SIGNED C. G. MacIntosh,

PROPERTY Jamieson I

HOLE NUMBER 171 56-1

SHEET NUMBER 5

DIAMOND DRILL RECORD

SECTION FROM 391.6 TO 524.5

LOCATION: LAT.....
 DEP.....
 ELEVATION OF COLLAR.....
 DATUM.....
 DIRECTION AT START: BEARING.....
 DIP.....

STARTED.....
 COMPLETED.....
 ULTIMATE DEPTH.....
 PROPOSED DEPTH.....

DEPTH FEET	FORMATION	SAMPLE NO.	WIDTH OF SAMPLE	GOLD S	SLUDGE GOLD †
391.6-406	Andesite - fine grained, medium green fairly massive				
406-553.1	Tuffaceous andesite - very fine grained, medium green, faintly banded, at 45°, Chloritic, weak schistosity at 45°. Quartz veinlets are parallel to lineation.				
406-420	- 5% quartz-carbonate veinlets. 3% fine grained disseminated and small massive blebs of pyrite.				
420-480	- 3% quartz-carbonate veinlets. 1% fine grained disseminated and blebs of pyrite associated with quartz-carbonate veinlets.				
480-497.5	- Few quartz-carbonate veinlets, very little pyrite.				
497.5-524.5	- 4% quartz-carbonate veinlets. 3% fine grained disseminated and blebs of pyrite.				

NORTHERN MINER PRESS LIMITED, TORONTO - STOCK FORM NO. 501 REV. 5/44

DRILLED BY N. Morissette Diamond Drilling

SIGNED C. G. MacIntosh

PROPERTY Jamieson I

HOLE NUMBER 171 56-1

SHEET NUMBER 6

SECTION FROM 524.5 TO 694

DIAMOND DRILL RECORD

LOCATION: LAT.....
 DEP.....
 ELEVATION OF COLLAR.....
 DATUM.....
 DIRECTION AT START: BEARING.....
 DIP.....

STARTED.....
 COMPLETED.....
 ULTIMATE DEPTH.....
 PROPOSED DEPTH.....

DEPTH FEET	FORMATION	SAMPLE NO	WIDTH OF SAMPLE	GOLD \$	SLUDGE GOLD \$		
	524-553.1 2% quartz carbonate veinlets. Very little pyrite associated with veinlets.						
553.1-581	Andesite - fine grained, medium green, uniform, fairly massive. Few tiny quartz veinlets.						
581-660.8	Tuffaceous Andesite - fine grained, medium green. Weak schistosity at 45°. Finely banded light and darker green parallel to schistosity. 3% quartz veinlets parallel to schistosity. No sulphides. 1/8" gouge on contact at 660.8'.						
	658-660.8 - weak shearing at 20° to 50°.						
660.8-694	Rhyolite - dark grey to light grey, hard, few small buff colored fragments. Weakly brecciated. Irregular reddish alteration. Visible quartz grains.						
	Left in hole: 79 ft. of 2" casing.						

NORTHERN MINER PRESS LIMITED, TORONTO-STOCK FORM NO 801 REV 8-44

DRILLED BY N. Morissette Diamond Drilling .

SIGNED C. G. MacIntosh.

PROPERTY Jamieson I Claim No. P-37625 (35')
 Claim No. P-37677(41P)

HOLE NUMBER 171 56-2
 SHEET NUMBER 1
 SECTION FROM 0 TO 145.5

DIAMOND DRILL RECORD

LOCATION: LAT. 6+10 South of Base Line
 DEP. 0+57 East of Line 26+008.
 ELEVATION OF COLLAR
 DATUM
 DIRECTION AT START BEARING South 15° West.
 DIP Collar - 50°, 250° -46°, 246° -44°

STARTED January 23, 1956.
 COMPLETED January 28, 1956.
 ULTIMATE DEPTH 246'
 PROPOSED DEPTH

*file
P. 34677*

DEPTH FEET	FORMATION	SAMPLE NO	WIDTH OF SAMPLE	GOLD %	SLUDGE GOLD %
0-111	Casing. Bedrock at 103'				Cu% Zn%
111-119.5	Fragmental Dacite - light grey, fine grained fragments in coarse grained, darker grey matrix. Weakly schistose. Lination at 60°.				
112.5-114	Very little sphalerite in narrow seams. Very little disseminated chalcopryite.				
119.5-125.5	Dacite -(spherulitic) - medium grey color, coarse texture Light grey "spherules" with diameters up to 1/8" are surrounded by chloritic material. Weakly lined.				
127-128	weakly brecciated. 3% - 30% irregular grey quartz. Little sphalerite and chalcopryite in the quartz. Very little disseminated chalcopryite	2164	1.0	0.20	0.27
129.7-133.5	brecciated. 40% irregular quartz. Little sphalerite. Very little chalcopryite, pyrite and pyrrotite	2165	3.8'	0.02	0.32

NORTHERN MINER PRESS LIMITED, TORONTO, STOCK FORM NO. 001 REV. 9-44

DRILLED BY M. Morissette Diamond Drilling

*Drill core is in storage
at our head office*

SIGNED

G. G. MacIntosh

PROPERTY Jamieson I

HOLE NUMBER 171 56-2

SHEET NUMBER 2

SECTION FROM 145.5 TO 200.5

DIAMOND DRILL RECORD

LOCATION: LAT.
 DEP.
 ELEVATION OF COLLAR
 DATUM
 DIRECTION AT START BEARING
 DIP

STARTED
 COMPLETED
 ULTIMATE DEPTH
 PROPOSED DEPTH

DEPTH FEET	FORMATION	SAMPLE NO	WIDTH OF SAMPLE	GOLD \$	BLUES GOLD \$	
145.5-146.3	Andesite - very fine grained, medium green. Very little disseminated pyrrhotite.				Cu%	Zn%
146.3-148	Dacite (spherulitic) - Few small fine grained fragments. Coarse textured. Very little sphalerite in thin seams.	2166	1.7			0.35
148-149.5	Andesite - Few tiny quartz veinlets, Very fine grained, medium green.					
149.5-162.6	Dacite (spherulitic) - Coarse texture, medium grey color. Few small fragments.					
	152-153.5 - brecciated, 20% irregular quartz. Very little sphalerite.					
162.6-165.4	Andesite - very fine grained, uniform massive. Narrow sections of andesite may be intrusive.					
165.4-178.1	Dacite (spherulitic) - Coarse texture, medium grey. Few small light grey fragments.					
178.1-200.5	Andesite - fine grained, medium green, fairly uniform and massive. Few streaks of epidote.					
	178.4 - 1/2" quartz at 50°. Very little pyrite.					

NORTHERN MINER PRESS LIMITED, TORONTO, ONTARIO, CANADA

DRILLED BY N. Morissette Diamond Drilling

SIGNED C. G. MacIntosh.

PROPERTY Jamieson IHOLE NUMBER 17A 56-2SHEET NUMBER 3

DIAMOND DRILL RECORD

SECTION FROM 200.5 TO 242.5
 LOCATION: LAT
 DEP
 ELEVATION OF COLLAR
 DATUM
 BEARING
 DIRECTION AT START
 DIP

 STARTED
 COMPLETED
 ULTIMATE DEPTH
 PROPOSED DEPTH

DEPTH (FEET)	FORMATION	SAMPLE NO	WIDTH OF SAMPLE	GOLD \$	SLUDGE GOLD \$		
					Cu%	Zn%	Ag oz.
200.5-231.5	Andesite - fine to medium grained, darker green color, fairly massive. 214.4 - 3" cherty quartz at 50°. 222.5-223.2 - irregular quartz and chlorite. 230.5 - 231.5 - brecciated, 30% irregular quartz. Little pyrite and very little chalcopyrite.						
231.5-255.5	Fragmental andesite - light grey, fine grained fragments in fine grained, darker matrix. Moderate schistosity. Lination at 60° to 65°. 231.5-232.5 - Few tiny quartz veinlets, 5% fine grained disseminated and small blebs of pyrite.						
	232.5-237.5 - 10% tiny quartz veinlets parallel to lination. 20% fine grained disseminated and small blebs of pyrite.	2250	5.0		Nil	Tr.	0.07
	237.5-242.5 - Few tiny quartz veinlets. 25% fine grained disseminated and small blebs of pyrite.	2242	5.0	Nil			

NORTHERN MINER PRESS LIMITED, TORONTO, STOCK FORM NO. 501 REV. 9-44

DRILLED BY N. Morissette Diamond DrillingSIGNED C. G. MacIntosh

PROPERTY Jamieson I

HOLE NUMBER 171 56-2

SHEET NUMBER 4

DIAMOND DRILL RECORD

SECTION FROM 242.5 TO 262

LOCATION: LAT. _____

STARTED _____

DEP. _____

COMPLETED _____

ELEVATION OF COLLAR _____

DATUM _____

ULTIMATE DEPTH _____

DIRECTION AT START: DEPARTING _____
DIP _____

PROPOSED DEPTH _____

DEPTH FEET	FORMATION	SAMPLE NO	WIDTH OF SAMPLE	GOLD %	SLUDGE GOLD %		
					Cu.%	Zn.%	Ag. Oz.
242.5-247.5	Few tiny quartz veinlets. 30% fine grained disseminated and small blebs of pyrite.	2243	5.0	Nil			
247.5-250.5	Few tiny quartz veinlet. 40% pyrite - fine grained disseminated and massive blebs. Very little sphalerite.	2244	3.0	0.17		0.82	
250.5-255.5	Few tiny quartz veinlets. 30% pyrite - fine grained disseminated and massive blebs. Very little sphalerite.	2151	5.0		Nil	0.30	0.04
255.5-264.5	Fragmental dacite - light grey, fine grained fragments in coarse textured matrix. Visible quartz grains. Lination at 65°.						
255.5-258.5	Few tiny quartz veinlets. 35% pyrite - fine grained disseminated and massive blebs. 2% sphalerite. Very little chalcopyrite on slips.	2245	3.0	0.17	0.07	3.42	
258.5-262	30% pyrite - fine grained disseminated and massive blebs. Little sphalerite.	2152	3.5		Nil	0.88	

NORTHERN MINER PRESS LIMITED TORONTO 510 YONGE ST. TORONTO 9-44

DRILLED BY N. Morissette Diamond Drilling

SIGNED C. G. MacIntosh.

PROPERTY Jamieson I

HOLE NUMBER 171 56-2

SHEET NUMBER 5

SECTION FROM 262 TO 302.5

DIAMOND DRILL RECORD

LOCATION: LAT.....
 DEP.....
 ELEVATION OF COLLAR.....
 DATUM.....
 DIRECTION AT START: BEARING.....
 DIP.....

STARTED.....
 COMPLETED.....
 ULTIMATE DEPTH.....
 PROPOSED DEPTH.....

DEPTH FEET	FORMATION	SAMPLE NO	WIDTH OF SAMPLE	GOLD %	SILICEOUS GOLD %	Ag %	As %
262 -264.5	15% pyrite - very little sphalerite in thin seams. $\frac{1}{8}$ " weathered quartz at 40° at 263.3.	2167	2.5'			Cu.% 1.49	Zn.% Ag % As %
264.5-295.8	Tuffaceous andesite - fine grained, medium green, faint banding, fairly massive, Lincation at 65°.						
287-293.3	- brecciated, 15% irregular quartz. No sulphides.						
293.3-295.5	- brecciated. 5% irregular quartz, Chlorite and calcite. 15% massive chalcopryite. 4% pyrrhotite. Little pyrite.	2246	2.2	0.17	9.48		
295.8 -316	Fragmental andesite - fine grained, light green fragments in fine grained darker green matrix.						
295.5-298.5	5% pyrite - fine grained disseminated and small blebs in narrow bands. Very little chalcopryite.	2153	3.0		0.02		
298.5-302.5	Few tiny quartz veinlets. 25% pyrite, fine grained disseminated and massive blebs. Very little sphalerite.	2154	4.0		N11 0.70		

NORTHERN MINERALS LIMITED TORONTO-STEEL FORM NO. 541 REV. 9-54

DRILLED BY H. Morissette Diamond Drilling

SIGNED G.G. MacIntosh.

PROPERTY Jamieson IHOLE NUMBER 171 56-2SHEET NUMBER 6

DIAMOND DRILL RECORD

SECTION FROM 302.5 TO 316
 LOCATION: LAT. _____
 DEP. _____
 ELEVATION OF COLLAR _____
 DATUM _____
 DIRECTION AT START: BEARING _____
 DIP _____

 STARTED _____
 COMPLETED _____
 ULTIMATE DEPTH _____
 PROPOSED DEPTH _____

DEPTH FEET	FORMATION	SAMPLE NO	WIDTH OF SAMPLE	GOLD \$	SLUDGE		Ag. Oz.
					Cu. %	Zn. %	
302.5-305	15% pyrite - fine grained disseminated and massive blebs in narrow bands.	2155	2.5		Nil.	0.08	
305-307	15% pyrite - fine grained disseminated and massive blebs. 2" - 50% quartz and 5% chalcopyrite at 306.7. 1/16" seam at 305.3'.	2247	2.0	Nil.	0.43		
307-309	Few tiny quartz veinlets. 10% pyrite - fine grained disseminated and massive blebs. Little sphalerite.	2156	2.0		0.01	0.86	
309-311	30% pyrite - fine grained disseminated and massive blebs. Little sphalerite	2157	2.0		Nil.	0.32	
311-313.5	40% pyrite - fine grained disseminated and massive blebs. Little sphalerite in narrow seams. 1"-10% chalcopyrite at 313.2'	2248	2.5	0.17	0.43	1.73	
313.5-316	30% pyrite - fine grained disseminated and massive blebs. Little sphalerite.	2158	2.5		Nil.	0.38	

NORTHERN MINER PRESS LIMITED, 1306, THE STICKS, EDMONTON, ALBERTA, CANADA

DRILLED BY N. Morissette Diamond DrillingSIGNED G. G. MacIntosh.

PROPERTY Jamieson I

HOLE NUMBER 171 56-2

SHEET NUMBER 7

DIAMOND DRILL RECORD

SECTION FROM 316 TO 446

LOCATION: LAT.....
 DEP.....
 ELEVATION OF COLLAR.....
 DATUM.....
 DIRECTION AT START: BEARING.....
 DIP.....

STARTED.....
 COMPLETED.....
 ULTIMATE DEPTH.....
 PROPOSED DEPTH.....

DEPTH FEET	FORMATION	SAMPLE NO	WIDTH OF SAMPLE	GOLD \$	SLUDGE GOLD \$		
					Cu.%	Zn.%	Ag. ⁰² %
316-369.5	Fragmental dacite - 20% irregular, light grey fragments in coarse textured dark grey matrix. Visible quartz grains. The rock is hard and fairly massive.						
316-318.5	50% pyrite - fine grained disseminated and massive blebs. 5% sphalerite. 1% chalcopyrite. The sphalerite is mostly concentrated in narrow bands.	2249	2.5	0.17	0.19	3.98	
369.5-372	Andesite - fine grained, medium green, massive						
372-385	Fragmental dacite - 15% light grey fragments in coarse textured darker grey matrix. Massive						
385-404.5	Dacite (spherulitic) - medium grey color, coarse texture. Light grey, feldspathic "spherules" surrounded by chloritic material. Massive.						Left in hole: 111' of 2" casing
404.5-405.8	Andesite - fine grained, medium green. Massive.						
405.8-446	Rhyolite - Hard, siliceous, light grey to dark grey color. Visible quartz grains. Massive.						

NORTHERN MINER PRESS LIMITED, TORONTO-STOCK FORM NO 501 REV. B 44

DRILLED BY N. Morissette Diamond Drilling

SIGNED C. G. MacIntosh.

Twp.
PROPERTY Jamieson I - Claim No. P-37625 (30')

Claim No. P-37626 (571')

DIAMOND DRILL RECORD

HOLE NUMBER 171 56-3

SHEET NUMBER 1

SECTION FROM 0 TO 285

LOCATION: LAT. 13 + 20 South of Base Line
DEP On Line 36 + 00 East.

ELEVATION OF COLLAR

DATUM

DIRECTION AT START: BEARING South - along Line 36 + 00E
D.P. Collar - 50°, 250' - 49°, 500' - 460

STARTED January 28, 1956

COMPLETED February 5, 1956.

ULTIMATE DEPTH 601'

PROPOSED DEPTH

DEPTH FEET	FORMATION	SAMPLE NO	WIDTH OF SAMPLE	GOLD \$	SLUDGE GOLD \$
0-187	Casing Bedrock at 180'.				
187-269	Andesite (sill) - medium to coarse grained, fairly uniform, massive. Few tiny quartz veinlets. Finer grained near contact.				
269-275.7	Tuffaceous andesite - very fine grained, fairly massive, medium green. Narrow fragmental sections. 2" quartz and chlorite at 50° at 275.6'. Very little pyrite in narrow seams.				
275.7-279.7	Fragmental dacite - 40% fine grained, light gray fragments in coarse grained, darker matrix. Quartz grains are visible in the matrix.				
	275.7-277.5 - chloritic, slightly schistose. Lination at 70°.				
279.7-316	Tuffaceous andesite - very fine grained, medium green, weak lination at 50°.				
	280-285 - 10% irregular, massive blebs of pyrite associated with tiny quartz, carbonate veinlets at 50° to core axis.	2163	5.0		

NORTHERN MINER PRESS LIMITED, TORONTO STOCK FORM NO 901 REV. 9 44

DRILLED BY N. Morissette Diamond Drilling

Drill Core is stored on the property

SIGNED

C.G. MacIntosh

PROPERTY Jamieson IHOLE NUMBER 171 56-3SHEET NUMBER 2

DIAMOND DRILL RECORD

SECTION FROM 285 TO 357.2LOCATION: LAT.
DEP.

STARTED

ELEVATION OF COLLAR

COMPLETED

DATUM

ULTIMATE DEPTH

DIRECTION AT START: BEARING

PROPOSED DEPTH

DEPTH FEET	FORMATION	SAMPLE NO.	WIDTH OF SAMPLE	GOLD #	SLUDGE GOLD #
	287.3-291 - 6% irregular, massive blebs of pyrite associated with tiny, irregular quartz-carbonate veinlets.				
	291-301 - fine grained breccia. 3% pyrite in narrow seams.				
	301-305 - 10% irregular, massive of pyrite associated with tiny quartz-carbonate veinlets.				
	305-308.7 - 10% irregular, massive pyrite blebs associated with tiny quartz-carbonate veinlets.				
	308.7-312 - 3% pyrite blebs associated with tiny quartz-carbonate veinlets.				
	312-316 - 8% irregular, massive pyrite blebs associated with tiny quartz-carbonate veinlets.				
316-357.2	Fragmental andesite - 60% light green fragments in fine grained, darker green matrix. Fairly massive. Fragments elongated at 50° to 55° to core axis.				

NORTHERN MINERALS LIMITED TORONTO STOCK FORM NO. 801 REV. 9-44

DRILLED BY N. Morissette Diamond DrillingSIGNED C.G. MacIntosh.

PROPERTY Jamieson Y

HOLE NUMBER 171 56-3

SHEET NUMBER 3

SECTION FROM 357.2 TO 601

DIAMOND DRILL RECORD

LOCATION: LAT. _____
DEP. _____

STARTED _____

ELEVATION OF COLLAR _____

COMPLETED _____

DATUM _____

ULTIMATE DEPTH _____

DIRECTION AT START: BEARING _____
DIP _____

PROPOSED DEPTH _____

DEPTH FEET	FORMATION	SAMPLE NO.	WIDTH OF SAMPLE	GOLD \$	SLUDGE GOLD \$
	316-320 - 5% irregular, massive pyrite blebs associated with tiny quartz-carbonate veinlets.				
357.2-512.5	Andesite - very fine grained, medium green, fairly massive. Weak lineation at 50°. Few tiny quartz veinlets.				
	361.5 - 1" quartz veinlet. No sulphides.				
	476-479 - Three 1" quartz, carbonate, epidote veinlets. Weak lineation at 50°. No sulphides				
512.5-573.8	Tuffaceous andesite - 25% light green fragments in fine grained, darker green matrix. Lineation at 50° to 60°.				
573.8-601	Andesite (sill) - medium to coarse grained, medium green, massive. Finer grained near contact at 573.8.				
	Left in hole - 70' of 2½" casing. 187' of 2" casing.				

NORTHERN MINER PRESS LIMITED, TORONTO, ST. JOHN ST. TEL. 597-5446

DRILLED BY

N. Morissette Diamond Drilling

SIGNED

C.G. MacIntosh.

P-37677

P-37675

P-37647

P-37625

DDH #3

134815
27476E

134815
27476E

134815
27476E

134815
27476E

134815
27476E

134815
27476E

P-37678

P-37648

P-37626

DOMINION GULF COMPANY
 LOCATION PLAN SHOWING
 D.D.H. - 171-56-3
 JAMIESON I
 PROVINCE OF ONTARIO

PROPERTY Jamieson I

Claim No. P-37677

File
P. 37677

HOLE NUMBER 171-56-12

SHEET NUMBER 1

SECTION FROM 0 TO 110

DIAMOND DRILL RECORD

LOCATION: LAT. 4+95 South of Base Line
DEP. 1+43 West of Line 26+00E

STARTED June 11, 1956.

ELEVATION OF COLLAR

COMPLETED June 15, 1956.

DATUM

ULTIMATE DEPTH 401'

DIRECTION AT START: BEARING South 25° West
DIP Collar - 50°, 250', 47°, 400'-44°

PROPOSED DEPTH

DEPTH FEET	FORMATION	SAMPLE NO	WIDTH OF SAMPLE	GOLD \$	SLUDGE GOLD \$	
					Cu%	Zn%
0-87	Casing					
87-138	Tuffaceous Andesite - fine grained; medium green colour; weak lination at 50° to 60° to core axis; faint banding; narrow fragmental bands parallel to lination.					
	87-91.5 - weakly brecciated; few tiny irregular quartz veinlets; 10% pyrite in veinlets of massive blebs.	2193	4.5	Nil.		
	94-95 - 12% pyrite in veinlets of massive blebs.					
	102.5-103.5 - few irregular quartz veinlets; 2% pyrite in small blebs.					
	106-107.5 - weakly silicified; few quartz veinlets; 1% pyrite.					
	107.5-110 - brecciated; weakly silicified; lination at 55°; 15% pyrite in veinlets of massive blebs and fine grained disseminations; very little fine grained sphalerite.	2194	2.5	Nil.		0.92

NORTHERN MINER PRESS LIMITED, TORONTO, CANADA

DRILLED BY N. Morissette Diamond Drilling

Drill core is stored
on this property.

SIGNED C. G. MacIntosh.

PROPERTY JAMIESON I

HOLE NUMBER 171-56-12

SHEET NUMBER 2

DIAMOND DRILL RECORD

SECTION FROM 110 TO 133

LOCATION LAT.
DEP.
ELEVATION OF COLLAR
DATUM

STARTED
COMPLETED
ULTIMATE DEPTH
PROPOSED DEPTH

DIRECTION AT START BEAR NG

DEPTH (FEET)	FORMATION	DIAMETER (INCHES)	WIND SPEED (MPH)	TEMPERATURE (°F)	Cu. %	Zn. %
110-114.5	- weakly brecciated; silicified; 12% pyrite in massive blebs in veinlets and fine grained, banded disseminations; 1% pyrrhotite in tiny veinlets.	2195	4.5	Nil.		0.10
114.5-118	- brecciated; weakly silicified, 10% pyrite in massive blebs in veinlets and fine grained, banded disseminations; 2% pyrrhotite and 1% sphalerite in tiny veinlets.	2196	3.5	Nil.		0.70
118-123	- brecciated; 5% irregular quartz veinlets; 10% pyrite in massive blebs and fine grained banded disseminations; little pyrrhotite and sphalerite in tiny veinlets.	2197	5.0	Nil.		0.05
123-128	- brecciated; weakly silicified; 20% pyrite in massive blebs and fine grained banded disseminations; little sphalerite.	2198	5.0	Nil.		0.22
128-133	- brecciated; silicified; 25% pyrite in massive blebs and fine grained, banded disseminations.	2199	5.0	Nil.		

DIAMOND DRILL RECORD

LOCATION: LAT.
OFF

STARTED

ELEVATION OF COLLAR

COMPLETED

BAROM

ULTIMATE DEPTH

DIRECTION AT START

PROPOSED DEPTH

DEPTH (FEET)	FORMATION	REMARKS	W. LOSS (% SAMPLE)	Cu. %	Zn. %
133-138	brecciated; weakly silicified; 20% pyrite in massive blebs and fine grained disseminations; little sphalerite and very little chalcopryrite in tiny veinlets.	2200	5.0	0.02	0.15
138-144.8	Andesite - fine grained; medium green colour; fairly massive.				
141.5-144	weakly brecciated; 30% irregular quartz, carbonate and chlorite; no sulphides; weathered rusty at 142.5; chlorite slip at 65° at 143.5.				
144.8-149.5	Tuffaceous Andesite - fine grained; medium green colour; faint banding.				
144.8-149.5	weakly brecciated; lineation at 55°; 2% chalcopryrite in tiny irregular veinlets; 2% pyrite and pyrrhotite in tiny veinlets; very little sphalerite.	4201	4.7	1.00	0.38
149.5-164.3	Andesite - fine grained; dark green colour, chloritic; chloritic; soft.				

PROPERTY: JAMESON I

HOLE NUMBER 171-56-12

SHEET NUMBER 4

SECTION FROM 153 TO 207.5

DIAMOND DRILL RECORD

LOCATION: LAT.
OFF

STARTED

ELEVATION OF COLLAR

COMPLETED

DATUM

ULTIMATE DEPTH

DIRECTION AT START: BEARING
DIP

PROPOSED DEPTH

DEPTH (FEET)	FORMATION	SAMPLE NO.	DIP OF SAMPLE	GOLD %	SLUDGE	
					Cut	Gr%
	153-156.5 - weakly brecciated; few tiny, irregular quartz veinlets; little chalcopyrite and pyrrhotite in veinlets.	4202	3.5		0.37	
	161.8-164.3 - weakly brecciated; few irregular quartz, carbonate veinlets; 4% chalcopyrite in tiny massive veinlets; very little pyrrhotite.	4203	2.5		3.51	
164.3-170.5	Tuffaceous andesite - few light green fragments in darker green fine grained matrix; few irregular quartz veinlets; lamination at 60°; 1/8" chalcopyrite veinlet at 167.5;					
170.5-202.8	Andesite - fine to medium grained; medium green colour; fairly massive; few small quartz veinlets; chloritic,					
202.8-207.5	Andesite - fine grained; dark green; chloritic.					
	203.8-204.5 - 70% irregular quartz and chlorite; slips at 60° to core axis.					
	204.5-206.6 - weakly brecciated; few irregular quartz, carbonate veinlets; little chalcopyrite in veinlets and blebs replacing quartz.	4204	2.1		0.70	

PROPERTY JAMIESON I

HOLE NUMBER 171-56-12

SHEET NUMBER 5

DIAMOND DRILL RECORD

SECTION FROM 207.5 TO 280

LOCATION: LAT. _____
 DEP. _____
 ELEVATION OF COLLAR _____
 DATUM _____
 DIRECTION AT START BEARING _____
 DIP _____

STARTED _____
 COMPLETED _____
 ULTIMATE DEPTH _____
 PROPOSED DEPTH _____

DEPTH FEET	FORMATION	SAMPLE NO	WIDTH OF SAMPLE	COLS	STRENGTH	REMARKS
207.5-213	206.6-207.9 - weakly brecciated; sheared at 60° to core axis; 30% quartz and carbonate veinlets parallel to shearing; 15% fine grained, disseminated pyrite; 3% chalcopyrite in tiny veinlets and disseminations.	4205	1.3		1.37	
213-221.5	Tuffaceous Andesite - fine grained; medium green colour; lination at 65°; 30% light grey fragments.					
221.5-343	Andesite - fine grained; dark green, chloritic; soft.					
	Andesite - fine grained; medium green colour; fairly massive.					
	231-238.5- fracture zone; chloritic slips at 60° to 90° moderate shear or fault zone.					
	269 - lination at 65°					
	278 - 3/4" quartz, chlorite at 70°.					
	278.2-279 - very fine grained, dark green chloritic.					
	280 - 1/2" quartz and chlorite at 55°.					

NORTHERN MINER PRESS LIMITED, TORONTO, CANADA

DRILLED BY N. Morissette Diamond Drilling.

SIGNED G. G. MacIntosh.

PROPERTY JAMIESON IHOLE NUMBER 171-56-12SHEET NUMBER 6SECTION FROM 280 TO 362.7**DIAMOND DRILL RECORD**

LOCATION: LAT.....
 DEP.....
 ELEVATION OF COLLAR.....
 DATUM.....
 DIRECTION AT START: BEARING.....
 DIP.....

STARTED.....
 COMPLETED.....
 ULTIMATE DEPTH.....
 PROPOSED DEPTH.....

DEPTH FEET	FORMATION	SAMPLE NO	WIDTH OF SAMPLE	GOLD \$	SLUDGE GOLD \$
	280.9 - $\frac{1}{8}$ " quartz, chlorite at 50°.				
	282.5-286.5 - 1% fine grained, disseminated pyrite in narrow bands.				
	304-308.5 - few irregular quartz, carbonate veinlets at 50°; little fine grained pyrite in quartz.				
	317-319.5- few irregular quartz, carbonate veinlets; 4% pyrite in massive blebs and fine grained disseminations; lineation at 65°.				
	320-326 - weakly brecciated; few irregular quartz, carbonate veinlets; little pyrite.				
343-352.5	Fragmental dacite - few small fragments; greenish-grey colour; hard; massive.				
352.5-355.5	Dacite (spherulitic) - light grey, feldspathic spherulites in dark green matrix; hard; massive.				
355.5-362.7	Andesite (sill) - medium grained; medium green; massive.				

NORTHERN MINING & CONSTRUCTION CO. LTD. TORONTO, CANADA

DRILLED BY **N. Morissette Diamond Drilling.**

SIGNED

C. G. MacIntosh.

PROPERTY JAMESON I

HOLE NUMBER 171 -56 - 12

SHEET NUMBER 7

SECTION FROM 362.7 to 401

DIAMOND DRILL RECORD

LOCATION: LAT.....
 DEP.....
 ELEVATION OF COLLAR.....
 DATUM.....
 BEARING.....
 DIRECTION AT START: DIP.....

STARTED.....
 COMPLETED.....
 ULTIMATE DEPTH.....
 PROPOSED DEPTH.....

DEPTH FEET	FORMATION	SAMPLE NO	WIDTH OF SAMPLE	GOLD \$	SLUDGE GOLD \$
362.7- 401	Andesite - fine grained; medium green colour, weak lineation at 65°. 362.7-364.5 - few tiny quartz, carbonate veinlets; 12% pyrite in massive blebs in quartz veinlets. 366-366.3- 15% quartz; 15% pyrite in massive blebs. 368-369 - brecciated; few quartz veinlets; 3% pyrite. 370.2-371.2 - few quartz veinlets; 3% pyrite. 372.1 -401 - few scattered quartz veinlets containing pyrite blebs.				

NORTHERN MINER PREPARED LIMITED TORONTO 4700K FORM 1 1954

DRILLED BY N. Morissette Diamond Drilling.

SIGNED C. G. MacIntosh.

L-265

DDH 12

P-37677

P-37625

P-37678

DOMINION GULF COMPANY
 LOCATION PLAN SHOWING
 D.D.H. - 171 - 12
 JAMIESON
 PROVINCE OF ONTARIO
 SCALE: 1" = 200' SEPT 26, 1956

PROPERTY ^{Twp.} Jamieson I Claim No. P-37625

HOLE NUMBER 171-56-21
 SHEET NUMBER 1
 SECTION FROM 0 TO 143

DIAMOND DRILL RECORD

LOCATION LAT. 7+13 South of Base Line.
 DEP. 1+58 East of Line 26+00E
 ELEVATION OF COLLAR
 DATUM

STARTED August 28, 1956.
 COMPLETED August 31, 1956.
 ULTIMATE DEPTH 342 feet.
 EXPOSED DEPTH

*File
 P-37625*

DIRECTION AT START BEARING South 15° West
 Dip Collar - 50°, 250° - 43°

DEPTH FEET	FORMATION	SAMPLE NO.	VEIN % QUARTZ	PIRROPHILITE	SULPHUR % GOLD
0-103	Casing				
103-117.5	Fragmental dacite - fine grained; light grey fragments in medium grained grey-green matrix; hard; fairly massive. Lination at 55° to core axis.				
117.5-134	Dacite - medium grained; grey-green color; hard; fairly massive; few white quartz veinlets.				
134-141	Dacite -(spherulitic) - medium grained; grey-green color; hard; fairly massive; few irregular quartz veinlets; 3% pyrite in fine grained, banded disseminations from 134 to 139'.				
141-143	Tuffaceous Andesite - altered light grey; faint banding at 55° to core axis; few irregular quartz veinlets; 8% pyrite in blebs and fine grained, banded disseminations.				

Drill core is in storage
 N. Morissette Diamond Drilling. *see Tardis Lake*
warehouse C. G. MacIntosh.

PROPERTY

Jamieson I

HOLE NUMBER 171-56-21

SHEET NUMBER 2

SECTION FROM 143 TO 220

DIAMOND DRILL RECORD

LOCATION: LAT.
 DEF.
 ELEVATION OF COLLAR
 DATUM

DIRECTION OF SLANT BEARING

STARTED
 COMPLETED
 ULTIMATE DEPTH
 TRIP-USED DEPTH

DEPTH	FORMATION	DIAMETER	ROTTING	REMARKS
143-193.7	Andesite - fine to medium grained; medium green; fairly uniform; few tiny irregular quartz veinlets. 165.6 - rusty, weathered joint. 170.5-171.2 - rusty, weathered joints at 60° to 85° to core axis.			
193.7-208.3	Dacite - medium grained; weakly altered; greenish-grey color; fairly massive; few quartz veinlets. 196-199 - 3% fine grained, disseminated pyrite. 200-208.3 - 3% pyrite in fine grained, banded disseminations.			
208.3-220	Andesite - fine grained; medium green color; fairly massive; weathered joints at 211.7; 213.3' and 216.9'. 213-214 - core broken up; chloritic slips at 70° to 80° to core axis.			

PROPERTY Jamieson I

HOLE NUMBER 171-58-21

SHEET NUMBER 3

SECTION FROM 220 TO 233

DIAMOND DRILL RECORD

LOCATION
LATITUDE
LONGITUDE
ELEVATION OF COLLAR
DATUM

STARTED
COMPLETED
ULTIMATE DEPTH
PROPOSED DEPTH

DIRECTION OF DIPPING

DEPTH (FEET)	FORMATION	SAMPLE NO.	WIDTH OF SAMPLE	ANALYSIS	
				Cu%	Zn%
220-233	Tuffaceous Andesite - fine grained; medium green color; faintly banded; narrow fragmental sections.				
220-225	- weakly altered; lineation at 65°; 6% pyrite in fine grained, banded disseminations; 1/4" quartz chlorite at 50° at 220; weathered joint at 221.2'.	4360	5.0	Nil	Nil
225-228	- altered light grey; weakly silicified; 1/2" irregular quartz veinlet at 225.8; 20% pyrite in fine grained, banded disseminations; 2% pyrrhotite; very little chalcopyrite and sphalerite.	4361	3.0	0.03	0.70
228-233	- altered light grey; very fine grained, siliceous from 230.5 to 233; 6% pyrite, finely disseminated; little fine grained sphalerite.	4362	5.0	Nil	0.32
233-247.5	Andesite - fine grained; dark green; chloritized; weakly carbonatized; few irregular quartz-carbonate veinlets.				

N. Morissette Diamond Drilling

C. G. MacIntosh.

PROPERTY Jamieson I

HOLE NUMBER 171-56-21
SHEET NUMBER 4
SECTION FROM 233 TO 249.5

DIAMOND DRILL RECORD

LOCATION: LAT.
DEP.

STARTED

ELEVATION OF COLLAR

COMPLETED

DATUM

ULTIMATE DEPTH

DIRECTION AT START: BEARING
DIP

PROPOSED DEPTH

DEPTH FEET	FORMATION	SAMPLE NO.	DEPTH OF SAMPLE		Cu%	Zn%
	236-239 - weakly brecciated; chloritic; few irregular quartz-carbonate veinlets; 3% pyrite in fine grained, banded disseminations; 1% pyrrhotite; 3% chalcopyrite in fine grained disseminations and tiny, massive veinlets.	4363	3.0		1.92	0.07
	239-242.5 - fairly massive; chloritic; weakly carbonatized; 4364 few tiny seams of massive chalcopyrite.		3.5		0.22	Nil.
	242.5-247.5 - fairly massive; chloritic; few tiny irregular seams of massive chalcopyrite.	4365	5.0		0.35	Nil.
247.5-304	Tuffaceous Andesite - fine grained; medium to light green color; faintly banded; narrow fragmental sections; few quartz-carbonate veinlets.					
	247.5-249.5 - few irregular quartz-carbonate veinlets; 30% pyrite in fine grained, banded disseminations; 3% chalcopyrite in fine grained disseminations and tiny veinlets; little sphalerite.	4366	2.0		1.57	0.46

N. Morissette Diamond Drilling.

C. G. MacIntosh.

PROPERTY Jamieson I

HOLE NUMBER 171-56-21

SHEET NUMBER 5

SECTION FROM 249.5 TO 279.5

DIAMOND DRILL RECORD

LOCATION: LAT
LONG
ELEVATION OF COLLAR
DATUMSTARTED
COMPLETED
ULTIMATE DEPTH
PROPOSED DEPTH

DIRECTION AT START

DEPTH FEET	FORMATION	SAMPLE NO.	TESTED	Cu%	Zn%
249.5-254.5	few tiny quartz-carbonate veinlets; 8% pyrite in blebs and fine grained, banded disseminations.	4367	5.0	0.02	0.20
254.5-259.5	few irregular quartz-carbonate veinlets; 5% pyrite in blebs and disseminations in quartz-carbonate veinlets.	4368	5.0	Nil	TR.
259.5-264.5	few quartz-carbonate veinlets; altered light grey from 261.5 to 264.5; 20% pyrite in fine grained, banded disseminations; little disseminated sphalerite.	4369	5.0	0.01	0.10
264.5-269.5	15% pyrite in blebs and fine grained, banded disseminations, little disseminated sphalerite.	4370	5.0	0.01	0.12
269.5-274.5	weakly altered; light grey; 20% pyrite in massive blebs and fine grained, banded disseminations; 1% disseminated sphalerite.	4371	5.0	Nil	0.98
274.5-279.5	weakly chloritized; 20% pyrite in blebs and fairly massive bands; 3% pyrrhotite; 2% chalcopyrite in tiny veinlets and disseminations.	4372	5.0	0.61	0.28

NORTHERN MINERALS LTD. TORONTO, CANADA

DRILLED BY

N. Morissette Diamond Drilling.

SIGNED

G. G. MacIntosh.

PROPERTY

Jamieson I

HOLE NUMBER 171-56-21

SHEET NUMBER 6

SECTION FROM 279.5 TO 342

DIAMOND DRILL RECORD

LOCATION

STARTED

ELEVATION OF COLLAR

COMPLETED

DATE

ULTIMATE DEPTH

DIRECTION AND

PROPOSED DEPTH

DEPTH	FORMATION	SAMPLE NO.	DIAMETER	REMARKS	Cut%	Gr%
279.5-282.5	weakly altered, light green color; 15% pyrite in blebs and fine grained, banded disseminations; very little disseminated sphalerite.	4373	3.0		0.03	0.22
304-314	Andesite - fine to medium grained; uniform; fairly massive.					
314-329	Tuffaceous Andesite - fine grained, medium to light green color; faintly banded; narrow fragmental sections.					
329-342	Andesite - fine to medium grained; medium green; fairly massive.					
Left in hole : - 103 feet of 2 inch casing.						

N. Morissette Diamond Drilling.

C. G. MacIntosh.

PROPERTY Jamieson I Claim No. P-37677 - 440 ft.
 " " P-37625 - 410 ft.

HOLE NUMBER 171-56-24
 SHEET NUMBER 1
 SECTION FROM 0 TO 334

DIAMOND DRILL RECORD

LOCATION: LAT. 2+05 S. of Base Line
 DEP. 1+60 E of Line 26+00 E
 ELEVATION OF COLLAR
 DATUM
 DIRECTION AT START BEARING S 25° W
 Collar - 55°, 250' - 55°, 500' - 53°, 750 - 48° PROPOSED DEPTH
 850 - 43

STARTED September 19, 1956.
 COMPLETED October 4, 1956.
 ULTIMATE DEPTH 850 feet.

*File
 P. 37677*

DEPTH FEET	FORMATION	SAMPLE NO	WIDTH OF SAMPLE	GOLD \$	SLUDGE GOLD \$
0-175	Casing				
175-196	Andesite (sill) - coarse to medium grained; fine grained at contact at 196 feet; medium green colour; uniform composition; massive.				
196-207	Andesite - very fine grained; medium green colour; fairly massive; joints at 40° to 60° to core axis.				
207-334	Andesite (sill) - coarse to medium grained; medium green colour; uniform composition; massive. 224-224.4 - weakly chloritised; three slip planes at 60° to core axis. 248-248.5 - altered; weathered, brownish colour (weak fault). 297-334 - darker green colour; fine grained. 307' - 1" quartz and chlorite at 35°. 327-334 - weakly brecciated; few tiny, irregular quartz carbonate veinlets; chloritic slips at 30°.				

DRILLED BY:

H. Morissette Diamond Drilling on Lake Hope

SIGNED

G. G. MacIntosh.

*Drill core is stored at
 Warehouse*

PROPERTY Jamieson J

HOLE NUMBER 171-56-24

SHEET NUMBER 2

SECTION FROM 334 TO 474.5

DIAMOND DRILL RECORD

LOCATION: LAT.
 DEP.
 ELEVATION OF COLLAR
 DATUM
 DIRECTION AT START: BEARING
 DIP

STARTED
 COMPLETED
 ULTIMATE DEPTH
 PROPOSED DEPTH

DEPTH FEET	FORMATION	SAMPLE NO	WIDTH OF SAMPLE	GOLD \$	DRUDGE GOLD \$
334-334.6	Very fine grained, siliceous hard, buff colour.				
334.6-337.5	Dacite - medium grained; greyish green colour; few light grey, fine grained fragments; hard; massive.				
337.5-472	Andesite (sill) medium grained; medium green color; fairly uniform composition; massive; few scattered, irregular quartz and carbonate veinlets; fine grained at 472'. 370-376 - darker green colour; few irregular quartz veinlets; chlorite and epidote alteration. 384-422 - darker green colour; fine grained. 392-393 - breccia - light green, fine grained matrix. 445-453 - coarse grained.				
472-611.3	Andesite - fine grained; medium green colour; weakly lined at 60° to core axis; 2% tiny irregular quartz veinlets.				

NORTHERN MINER PRESS LIMITED, TORONTO STOCK FORM NO. 501 REV. 8-44

DRILLED BY N. Morissette Diamond Drilling

SIGNED G. G. MacIntosh.

PROPERTY Jameson IHOLE NUMBER 171-58-24SHEET NUMBER 3

DIAMOND DRILL RECORD

SECTION FROM 474.5 TO 502LOCATION: LAT.
DEP.

STARTED

ELEVATION OF COLLAR

COMPLETED

DATUM

ULTIMATE DEPTH

DIRECTION AT START BEARING
DIP

PROPOSED DEPTH

DEPTH FEET	FORMATION	SAMPLE NO.	WIDTH OF SAMPLE	G.O.D.S.	SLUDGE COLDS
474.5-488.5	- 1% quartz and carbonate veinlets; 3% pyrite in blebs and fine grained banded disseminations.				
488.5-489.7	- weakly altered and brecciated; 10% pyrite in small blebs and fine grained, banded disseminations.				
490-490.6	- altered greyish colour; 40% pyrite in blebs and fine grained, banded disseminations.				
490.6-491.5	- 3% pyrite in fine grained, banded disseminations.				
491.5-493	- 45% pyrite in blebs and fine grained, banded disseminations.				
493-499	- 10% pyrite in blebs and fine grained disseminations forming fairly massive bands.				
499-502	- weakly altered; light grey color; weakly brecciated; 20% pyrite in blebs and fine grained, banded disseminations.				

NORTHERN MINER PRESS LIMITED, TORONTO, STOCK FORM NO. 111-111-1-44

DRILLED BY N. Morissette Diamond Drilling.SIGNED C. G. MacIntosh.

PROPERTY Janieson IHOLE NUMBER 171-56-24SHEET NUMBER 4

DIAMOND DRILL RECORD

SECTION FROM 502 TO 565.5

LOCATION: LAT. _____
 DEP. _____
 ELEVATION OF COLLAR _____
 DATUM _____
 DIRECTION AT START: BEARING _____
 DIP _____

STARTED _____
 COMPLETED _____
 ULTIMATE DEPTH _____
 PROPOSED DEPTH _____

DEPTH FEET	FORMATION	SAMPLE NO	WIDTH OF SAMPLE	GOLD \$	SLUDGE GOLD \$
	502-507 - 6% pyrite in fine grained, banded disseminations.				
	510-512.6 - 5% pyrite in fine grained, banded disseminations.				
	522' - 1" quartz veinlet at 50°; 40% pyrite blebs.				
	523.5 - 1 1/2" quartz veinlet; 30% pyrite blebs.				
	504-611.3 - darker green; weakly chloritized and carbonatized.				
	525-527.5 - few quartz-carbonate veinlets; 3% pyrite in massive blebs.				
	528-538 - fine grained; lighter green color.				
	551-552.5 - few quartz-carbonate veinlets; 2% pyrite in fine grained, banded disseminations.				
	556-561 - few irregular quartz veinlets; 4% pyrite in blebs and fairly massive, fine grained, banded disseminations.				
	564-565.5 - few irregular quartz-carbonate veinlets; 15% pyrite in small blebs.				

NORTHERN MINER PRESS LIMITED, TORONTO - STOCK FORM NO. 507 REV. 9-44

DRILLED BY

N. Morissette Diamond Drilling.

SIGNED

G. G. MacIntosh.

PROPERTY

Janieson I

HOLE NUMBER 171-56-24

SHEET NUMBER 5

SECTION FROM 565.5 TO 632

DIAMOND DRILL RECORD

LOCATION: LAT.
 DEP.
 ELEVATION OF COLLAR
 DATUM
 DIRECTION AT START BEARING
 DIP

STARTED
 COMPLETED
 ULTIMATE DEPTH
 PROPOSED DEPTH

DEPTH FEET	FORMATION	SAMPLE NO	WIDTH OF SAMPLE	GOLD S	SLUDGE GOLD S
565.5-575	few quartz-carbonate veinlets, 3% pyrite in small blebs.				
575-604	few tiny quartz veinlets; 2% pyrite in small blebs and fine grained, banded disseminations.				
611.3-617.1	Dacite - medium grained; greenish grey colour; few small, light grey fragments; weak lineation at 55° to core axis.				
617.1-622	Andesite - fine grained; medium green colour; weakly brecciated; little disseminated pyrite.				
622-625.1	Dacite - spherulitic; few small, light grey fragments; weak lineation at 55° to core axis.				
625.1-626.8	Andesite - very fine grained; medium green color; massive.				
626.8-627.5	Light grey colour; very fine grained; siliceous; hard.				
627.5-632	Fragmental Andesite - light green fragments in fine grained, medium green matrix.				

NORTHERN MINER PRESS LIMITED, TORONTO - STOCK FORM NO. 601 REV. 1-54

DRILLED BY

N. Morissette Diamond Drilling.

SIGNED

O. G. MacIntosh.

PROPERTY

Jamieson I

HOLE NUMBER 171-56-24

SHEET NUMBER 6

SECTION FROM 632 TO 722.6

DIAMOND DRILL RECORD

LOCATION: LAT.
 DEP.
 ELEVATION OF COLLAR
 DATUM

STARTED
 COMPLETED
 ULTIMATE DEPTH
 PROPOSED DEPTH

DIRECTION AT START BEARING
 DIP

DEPTH FEET	FORMATION	SAMPLE NO	WIDTH OF SAMPLE	GOLD g	SLUDGE GOLD g
632-632.8	Dacite - medium grained; greenish grey colour; massive; hard.				
632.8-646	Fragmental Andesite - light green fragments in fine grained, medium green matrix.				
646-649.5	Andesite (sill) - fine to medium grained; medium green colour; massive.				
649.5-650.2	Fine grained; siliceous; buff colour; hard; massive.				
650.2-651.2	Andesite - fine grained; medium green colour; contacts at 60° to core axis.				
651.2-683.5	Dacite - medium grained; greenish grey colour; siliceous; hard; massive.				
	651.2-655.5 - amygdaloidal				
	666-668 - brecciated - 30% irregular, greyish quartz.				
683.5-694	Andesite (sill) - medium grained; fine grained contacts; medium green colour; massive.				
694-722.6	Dacite - medium grained; light to medium greenish grey colour; hard; massive.				

NORTHERN MINING PRESS LTD, TORONTO; STOCK FORM NO. 101 REV. 9-44

DRILLED BY N. Morissette Diamond Drilling

SIGNED C. G. MacIntosh.

PROPERTY

Jamieson 1

HOLE NUMBER 171-56-24

SHEET NUMBER 7

SECTION FROM 722.6 TO 802.5

DIAMOND DRILL RECORD

LOCATION: LAT. _____
DEP. _____

STARTED _____

ELEVATION OF COLLAR _____

COMPLETED _____

DATUM _____

ULTIMATE DEPTH _____

DIRECTION AT START: BEARING _____
DIP _____

PROPOSED DEPTH _____

DEPTH FEET	FORMATION	SAMPLE NO.	WIDTH OF SAMPLE	GOLD \$	SLUDGE GOLD \$
722.6-726.8	Andesite (sill) - medium grained; fine grained contacts; medium green colour; massive.				
726.8-731	Dacite - medium greenish-grey colour; hard; massive; siliceous.				
731-741	Fragmental Andesite - light grey, very fine grained fragments in fine grained, medium green matrix. 731-732 - few tiny quartz veinlets; 6% pyrite in small blebs and fine grained, banded disseminations; weakly lineated at 60° to core axis. 732-737.5 - few tiny quartz veinlets; 2% pyrite in fine grained, banded, fairly massive disseminations. 737.5-740.7 - 3% pyrrhotite in tiny, irregular fairly massive veinlets; little pyrite.				
741-802.5	Tuffaceous Andesite - very fine grained; medium green to light green colour; faintly banded; few quartz veinlets; weak lineation at 60° to core axis.				

NORTHERN MINER PRESS LIMITED, TORONTO - STOCK FORM NO. 501 REV. 8-44

DRILLED BY

N. Morissette Diamond Drilling

SIGNED

G. G. MacIntosh

PROPERTY Jamieson I

HOLE NUMBER 171-56-24

SHEET NUMBER 6

SECTION FROM 802.5 TO 850

DIAMOND DRILL RECORD

LOCATION: LAT. _____
 DEP. _____
 ELEVATION OF COLLAR _____
 DATUM _____
 DIRECTION AT START: BEARING _____
 DIP _____

STARTED _____
 COMPLETED _____
 ULTIMATE DEPTH _____
 PROPOSED DEPTH _____

DEPTH FEET	FORMATION	SAMPLE NO	WIDTH OF SAMPLE	GOLD \$	SLUDGE GOLD \$
802.5-835.5	Andesite (sill) - medium grained; fine grained contacts; medium green color; uniform composition; massive.				
835.5-850	Tuffaceous Andesite - very fine grained; medium to light green colour; faint banding; weak lineation at 60° to core axis.				
	Left in Hole; 175 feet of 2" casing.				

NORTHERN MINER PRESS LIMITED, TORONTO 5504 FORM NO 507 REV 9-44

DRILLED BY N. Morissette Diamond Drilling.

SIGNED

C. G. MacIntosh.

PROPERTY Jamieson I

Claim No P-37485 - 50 feet.

" " P-37677 - 785 feet

HOLE NUMBER 171-56-25

SHEET NUMBER 1

SECTION FROM 0 TO 266

DIAMOND DRILL RECORD

LOCATION: LAT. 0+22 N of Base Line
DEP. 18+80 E

ELEVATION OF COLLAR

DATUM

DIRECTION AT START: BEARING S 27° W
DIP Collar - 55°, 250°-52°, 500°-48°, 750°-44°

STARTED October 5, 1956.

COMPLETED October 13, 1956.

ULTIMATE DEPTH 835 feet.

PROPOSED DEPTH

File
P. 37484

DEPTH FEET	FORMATION	SAMPLE NO	WIDTH OF SAMPLE	GOLD \$	SLUDGE GOLD \$
0-92	Casing.				
92-121	Andesite - fine grained; medium green colour, fairly massive; very little disseminated pyrite.				
121-225	Andesite - medium-fine grained; dark green color; weakly chloritized and carbonatized; fairly massive. 211-220 - 4% pyrite in large ($\frac{1}{2}$ ") fine grained, massive blebs. 223.5-225 - 3% pyrite in fine grained bands.				
225-251.8	Tuffaceous Andesite - very fine grained; light to medium green colour; faint banding; lination at 60° to core axis. 236.6-239.9 - laminated, light and dark grey tuff.				
251.8-266	Andesite (sill) - medium grained; medium green colour; uniform; massive.				

NORTHERN MINER PRESS LIMITED, TORONTO. STOCK FORM NO. 501 REV. 9-44

DRILLED BY

N. Morissette Diamond Drilling

*Drill core is in store
about 7000 lbs
warehouse*

SIGNED

C. G. MacIntosh.

DIAMOND DRILL RECORD

LOCATION: LAT.
 DEP.
 ELEVATION OF COLLAR
 DATUM
 DIRECTION AT START BEARING
 DIP

STARTED
 COMPLETED
 ULTIMATE DEPTH
 PROPOSED DEPTH

DEPTH FEET	FORMATION	SAMPLE NO	WIDTH OF SAMPLE	GOLD \$	SLUDGE GOLD \$
266-286.6	Andesite - very fine grained; medium green color; weak lineation at 60°. 285-286 - 2% pyrite.				
286.6-297.3	Dacite - medium grained; greenish grey color; hard; massive; few tiny, light grey fragments; light grey spherules.				
297.3-298.5	Andesite - very fine grained; medium green color.				
298.5-300	Lost core				
300-554.8	Andesite (sill) - medium grained; medium green color; fairly massive; few narrow fine grained sections.				
554.8-573.6	Dacite - medium grained; greenish grey color; weak lineation at 60° to core axis.				
573.6-620.5	Andesite (sill) - medium grained; uniform; fairly massive; medium green color.				

DIAMOND DRILL RECORD

LOCATION: LAT.
 DEP.
 ELEVATION OF COLLAR
 DATUM
 DIRECTION AT START BEARING
 DIP

STARTED
 COMPLETED
 ULTIMATE DEPTH
 PROPOSED DEPTH

DEPTH FEET	FORMATION	SAMPLE NO	WIDTH OF SAMPLE	GOLD \$	SILVER GOLD \$
620.5-669.3	Tuffaceous Andesite - fine grained; narrow fragmental sections; medium to light green color; faintly banded, lineation at 55°. 622.5-627.5 - weakly brecciated; 5% fine grained pyrite in tiny veinlets and fine grained, banded disseminations. 627.5-632.5 - 3% pyrite in fine grained, banded disseminations. 639-641.5 - 7% pyrite in fine grained, banded disseminations; altered light grey (silicified) from 639 to 639.7 and 641.2 to 641.5. 644.5-650 - 2% pyrite in narrow fine grained, banded disseminations. 650-651 - 3% quartz veinlets; 3% pyrite associated with quartz veinlets.				
669.3-676	Dacite - medium grained; greenish grey color; weakly lineated at 60° to core axis.				

PROPERTY

Jamieson I

HOLE NUMBER 171-56-25

SHEET NUMBER

4

DIAMOND DRILL RECORD

SECTION FROM

676

TO

832

LOCATION: LAT. _____
 DEP. _____
 ELEVATION OF COLLAR _____
 DATUM _____
 DIRECTION AT START: BEARING _____
 DIP _____

STARTED _____
 COMPLETED _____
 ULTIMATE DEPTH _____
 PROPOSED DEPTH _____

DEPTH FEET	FORMATION	SAMPLE NO	WIDTH OF SAMPLE	GOLD \$	SLUGGS GOLD \$
676-684	Andesite (sill) - medium - fine grained; uniform; medium green color; fairly massive.				
684-717.5	Tuffaceous Andesite - weakly brecciated; 10% irregular quartz-carbonate veinlets; folded - lineation at 30° to 60° to core axis.				
717.5-751	Fragmental Andesite - 60% light grey, very fine grained fragments in dark green, fine grained matrix; folded - lineation at 15° to 60° to core axis. 718-721.5 - brecciated; 25% irregular quartz and carbonate.				
751-835	Tuffaceous Andesite - fine grained, light to medium green color; faint banding; weak schistosity; lineation at 45° to 60° to core axis; few scattered quartz-carbonate veinlets. 771.2-779 - Lost core. Left in Hole : 92 feet of 2" casing.				

NORTHERN MINER ASSOCIATION LIMITED, TORONTO, ONTARIO, CANADA

DRILLED BY N. Morissette Diamond Drilling.

SIGNED G. G. MacIntosh.

PROPERTY Babcu Option - claim No. P-37484

HOLE NUMBER 299-56-1

SHEET NUMBER 1

SECTION FROM 0 TO 171

DIAMOND DRILL RECORD

LOCATION: LAT. 3+15 N of Base Line
 DEP. 4+72 E. of Twp. Line.

STARTED August 7, 1956.

COMPLETED August 10, 1956.

ELEVATION OF COLLAR

ULTIMATE DEPTH 374 feet.

DATUM

PROPOSED DEPTH

DIRECTION AT START BEARING N 43° E.
 Collar - 45°, 200' - 39° - 374' - 37°

*File
P-37484*

DEPTH FEET	FORMATION	SAMPLE NO.	WIDTH FEET	GOLD \$	SILVER DOLLARS
0-57	Casing.				
57-113.2	Tuffaceous Andesite - fine grained; medium to dark green color; faint banding; lination at 50° to core axis. 57-63 - weakly chloritized; chloritic slips; shearing at 40° from 62-63. 67-68 - weakly sheared, chloritic slips at 45°. 76.5-78 - brecciated; 30% irregular quartz and carbonate. 82.5-84 - brecciated; 25% irregular quartz and carbonate. 96-97 - weakly brecciated; 30% irregular quartz and carbonate.				
113.2-171	Fragmental Andesite - 30% light grey and green fragments, elongated at 50° to core axis, in fine grained, medium green matrix; fairly hard and massive; very little disseminated pyrite; few small irregular quartz and carbonate veinlets.				

*Drill core is stored at
 see Larder Lake
 Lodgehouse*

DRILLED BY

N. Morissette Diamond Drilling

G. G. MacIntosh.

PROPERTY Babcu OptionHOLE NUMBER 229-56-1SHEET NUMBER 2

DIAMOND DRILL RECORD

SECTION FROM 171 TO 270LOCATION LAT
DEP

STARTED

ELEVATION OF COLLAR

COMPLETED

DATE

ULTIMATE DEPTH

DIRECTION AT START BEARING
DIP

PROPOSED DEPTH

DEPTH FEET	FORMATION	SAMPLE NO	WEIGHT SAMPLE	NET WT GOLD \$	NET WT GOLD \$
171-196	Tuffaceous Andesite - fine grained, medium green; faintly banded; lineation at 60°; few tiny quartz and carbonate veinlets parallel to lineation. 178-189.5 - 1% pyrite in quartz veinlets. 189.5-191 - 3% pyrite in quartz veinlets.				
196-200	Andesite - fine grained, medium green, uniform, fairly massive.				
200-207	Tuffaceous Andesite - fine grained, medium green, weakly chloritized; lineation at 60° to core axis; 2% disseminated, white carbonate nodules.				
207-216	Andesite (sill) - fine to medium grained, dark green, weakly chloritized; few irregular quartz-chlorite veinlets.				
216-270	Tuffaceous Andesite - fine grained, medium green color, faintly banded; lineation at 55°; carbonatized (nodular); 2% tiny quartz and carbonate veinlets. 258-270 - little fine grained pyrite in quartz veinlets.				

DRILLED BY N. Morissette Diamond DrillingSIGNED G. G. MacIntosh.

PROPERTY Babou Option

HOLE NUMBER 27-30-1
 SHEET NUMBER 3
 SECTION FROM 270 TO 374

DIAMOND DRILL RECORD

LOCATION LAT. _____
 DEP _____
 ELEVATION OF COLLAR _____
 DATUM _____
 DIRECTION AT START BEARING _____
 DIP _____

STARTED _____
 COMPLETED _____
 ULTIMATE DEPTH _____
 PROPOSED DEPTH _____

DEPTH	FORMATION	SAMPLE NO.	WIDTH OF SAMPLE	GOLD \$	BLIND GOLF \$	
270-293.7	Andesite (sill) - fine grained, medium green, fairly massive. Few tiny quartz and carbonate veinlets.					
293.7-374	Tuffaceous Andesite - fine grained, medium green, faintly banded; weakly carbonatized; lination at 60°; very little disseminated pyrite.					
	340-347.5 - very little pyrite and pyrrhotite in fine grained, narrow bands.					
	350-351.5 - very little pyrite in tiny quartz veinlets.					
	357-374 - weakly carbonatized; very little pyrite in narrow bands and disseminations.					
	Left in hole: 57 feet of 2" casing.					

PROPERTY Babou Option Claim No. P-37484

HOLE NUMBER 229-56-2

SHEET NUMBER 1

DIAMOND DRILL RECORD

SECTION FROM 0 TO 138.5

LOCATION: LAT. 0+50 N of Base Line
DEP. 7+76 E of Township Line.

STARTED August 15, 1956.

COMPLETED August 17, 1956.

ELEVATION OF COLLAR

ULTIMATE DEPTH 307 feet.

DATUM

PROPOSED DEPTH

DIRECTION AT START BEARING N 43° E.
DIP Collar 45°, 250' - 36°*File
P. 37484*

DEPTH FEET	FORMATION	SAMPLE NO	WIDTH OF SAMPLE	GOLD \$	SCALE OF GOLD \$
0-63	Casing.				
63-138.5	Tuffaceous Andesite - fine grained, medium green color, faint banding; narrow fragmental sections; few tiny quartz and carbonate veinlets. 63-63.5 - folded at 0° to 50° to core axis (lamination) 70-81 - tight folds at 0° to 60° to core axis (lamination) 76-81 - few tiny quartz and carbonate veinlets; 5% pyrite in massive blebs and irregular veinlets. 81-86 - few tiny quartz and carbonate veinlets; 4% pyrite. in massive blebs and tiny quartz carbonate veinlets; lineation at 55°. 86-92 - few tiny quartz and carbonate veinlets; 6% pyrite in narrowbands. 110-115 - core fractured; chloritic slips at 60°. 115-133 - weakly chloritized and carbonatized.				

NORTHERN MINER PRES. LIMITED, MONTREAL, QUEBEC, CANADA

DRILLED BY N. Morissette Diamond Drilling.

*Drill core is stored at
our storage tank
warehouse* SIGNED C. G. MacIntosh.

PROPERTY Babou Option

HOLE NUMBER 229-56-2
SHEET NUMBER 2
SECTION FROM 138.5 TO 307

DIAMOND DRILL RECORD

LOCATION: LAT. _____
DEP. _____
ELEVATION OF COLLAR _____
DATUM _____
DIRECTION AT START BEARING _____STARTED _____
COMPLETED _____
ULTIMATE DEPTH _____
PROPOSED DEPTH _____

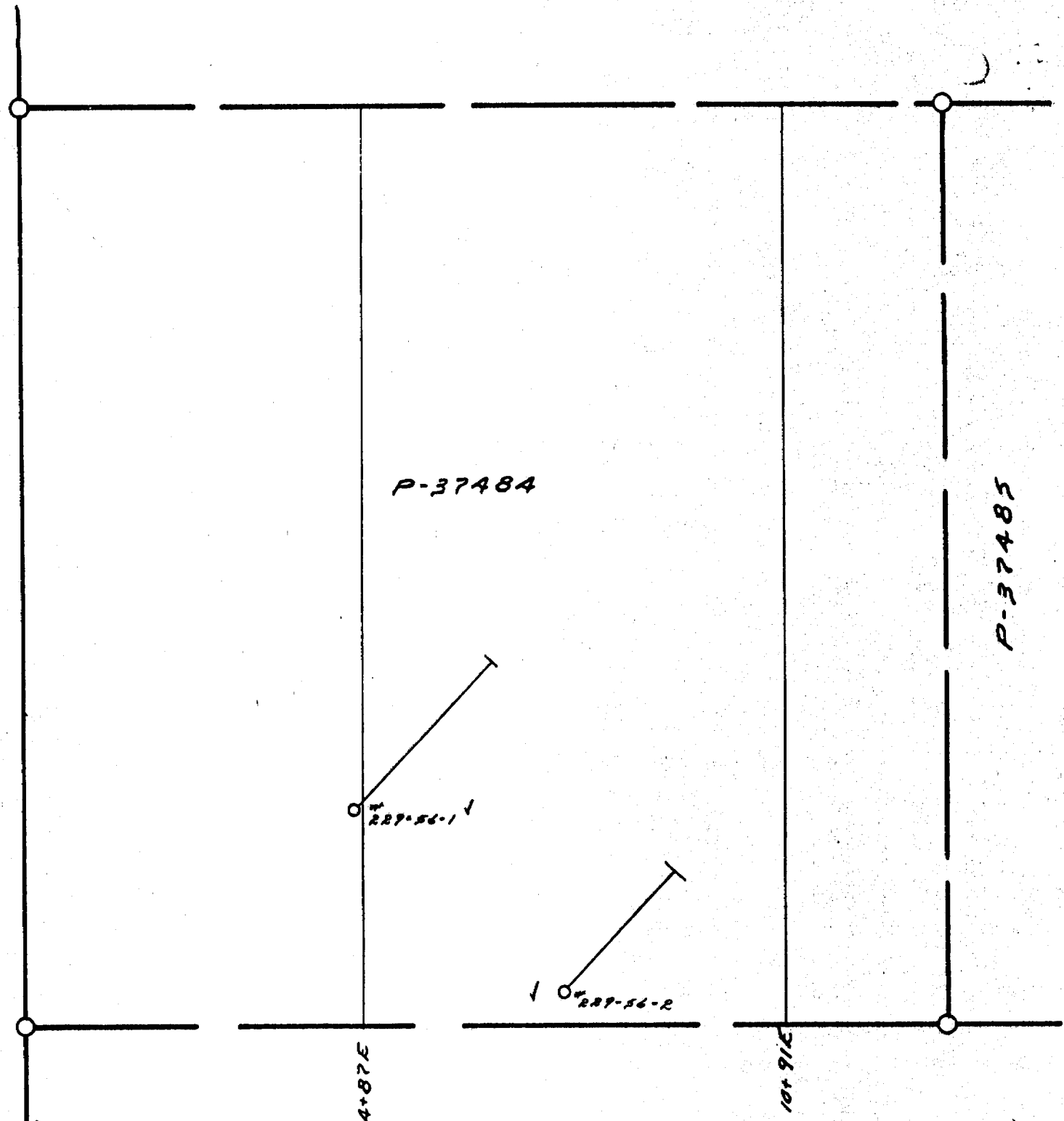
DEPTH FEET	FORMATION	SAMPLE NO	WIDTH SAMPLE	GOLD \$	SLUDGE GOLD \$
138.5-202.5	Fragmental Andesite - 20% light grey and green fragments, elongated at 55° to core axis, in fine grained, medium green matrix; hard and fairly massive; few tiny quartz and carbonate veinlets.				
	176.5-177 - weakly brecciated; quartz-carbonate vein.				
202.5-307	Tuffaceous Andesite - fine grained, medium green, faintly banded; few tiny quartz carbonate veinlets; 214' - 1/2" quartz veinlet. 218.1- 1" irregular quartz and carbonate; chloritic dip at 60°. 263.5-264.5 - brecciated; 40% irregular quartz and carbonate; chloritic slip at 45°. 290-292.5 - weakly brecciated; silicified; 20% irregular quartz and carbonate; very little pyrite. Left in hole; 63 feet of 2" casing.				

DRILLED BY

N. Morissette Diamond Drilling.

SIGNED

G. G. MacIntosh.



COBB TWP
JAMIESON TWP



4+87E

10+91E

P-37484

P-37485

229-56-1

229-56-2

DOMINION GULF COMPANY
 LOCATION PLAN SHOWING
 D.D.M'S. 229-56-1 & -2
 BARGU OPTION
 JAMIESON I
 PROVINCE OF ONTARIO
 SCALE: 1"=200' NOV. 5, 1956